

105.0 mm

"2.4GHz All Around Freedom, Infinite Possibilities"
Odyssey 2620_RF-620

User's Manual



System requirements

- IBM or compatible PC
- Windows and Macintosh Operating System
- Pentium-equivalent processor or above
- At least 10MB hard disk space
- One available USB port

OS support

- Windows ME
- Windows 2000/NT
- Windows XP

Introduction

Thank you for purchasing our cordless keyboard and Laser mouse. For your own safety, please read this manual thoroughly before using this product. After you have read this manual, please keep it in Place for reference when necessary.

Contents in the package

The following items are included in the package. Please make sure all items are accounted for as you open the package. If there was any item missing or damaged, please contact the reseller where the product was purchased or our support center.

- Wireless Keyboard x 1
- Wireless Laser Mouse x 1
- USB 2.4GHz dongle receiver x 1
- Manual/warranty x 1
- Alkaline batteries x 4
(2 AAA for Keyboard, 2 AAA for Mouse)

Warning

Any malfunction, damage or personal injury caused by the malfunctioning or damage of the user's personal computer or misuse of this product. Do not dismantle, change or modify this product in any way.

Warning

Please do not use this product in rainy, wet, or oily environments. Failure to do so may shorten the life of this product and may cause bodily harm. Please keep this product as far away from Radio Frequency information areas as possible. This is not an outdoor product. Exposing this product to the elements may cause damage to the product and bodily harm to its users. Please do not use petroleum, benzene or thinner-based solution to clean this product.

Laser Mouse

International standards and safety. This Laser device complies with International Standard IEC 60825-1:2001-08, Class I Laser Product, and also complies with 21 CFR 1040.10 and 1040.11, except for deviations pursuant to Laser Notice No. 59, dated July 28, 2001. 1) Emission of a parallel beam of red laser light; 2) Maximum Power of 716 microwatts CW, wavelength range 630-665 nanometers; 3) Operating temperature between 0°C (32°F) to 40°C (104°F).

CAUTION: This Laser device has no serviceable parts. Use of controls or adjustments or performance of procedures other than those specified herein may result in hazardous radiation exposure.

Safety and Usage Guidelines

- Do not point infrared beam at eye.
- In the absence of proper operation and if customer-initiated troubleshooting is unsuccessful, switch off device and call technical support.
- Do not disassemble your product or expose it to liquid, humidity, moisture, or temperatures outside the specified operating range of 0°C (32°F) to 40°C (104°F).
- If your product is exposed to out-of-range temperatures, switch it off and allow the temperature to return to the normal operating range.

Mouse

- Dimensions: 106 x 59 x 36 mm
- Weight: 108 +/- 20g (with Battery)
- Key Number: 3 Keys
- Battery: 2 x AAA batteries
- Battery Life: 1 Month (Base on average usage)
- Channel: 78 Channels
- ID: Unique ID for mouse
- Radio Frequency: 2.4 GHz

Dongle Receiver

- Dimensions: L70xW22.7xH12.3mm
- Weight: 10.9g
- Interface: USB 1.1

Attention

The mouse's optical sensor may not work on bumpy, reflective and/or translucent materials; such as glass, polished table top and/or cloth. We recommend using a mouse pad for improved accuracy.

B. Setting up the Keyboard and Mouse

- Open the keyboard's battery compartment cover and insert the two pieces of AAA Alkaline batteries. Make sure they are properly installed. (FIG. 1)
- Replace the keyboard battery compartment cover.
- Open the mouse's battery compartment cover and insert the two pieces of AAA Alkaline batteries. Make sure they are properly installed. (FIG. 2)
- Replace the mouse battery compartment cover.
- Usually the keyboard and mouse have bind in the factory. If the system cannot recognize the keyboard and mouse, please follow step 6-8 to bind keyboard and mouse.
- Let Keyboard right corner and Mouse to close the Dongle to 0-15cm.
- To press any key of keyboard and any button of mouse, the system will automatically recognize the keyboard & mouse.
- The LED indicator on the dongle receiver will show green light when the connecting have been properly set and the keyboard and mouse are working.

150.0 mm
300.0 mm

Warranty Information

This product is backed by a One-Year Manufacturer's Warranty, starting from the date of purchase. The warranty covers for free repair in accordance with the contents stated herein but does not cover wear and tear and any malfunction or damages as results of improper usage as stated in this manual.

Specifications

Keyboard

- Dimensions: 303 x 163 x 22 mm
- Weight: 325 +/- 20g (with Battery)
- Key Number: 85 Keys
- Battery: 2 x AAA batteries
- Battery Life: 3 Month (Base on average usage)
- Channel: 78 Channels
- ID: Unique ID for each keyboard
- Radio Frequency: 2.4 GHz
- Hot Keys :WWW, E-Mail, My Favorite, Sleep, Power

Installation Procedure

Before installing this product please make sure you have one available USB port reserved for the dongle receiver. If your computer did not have an available USB port, you may purchase one of Zippy's 10-Key keypad with USB Expansion ports or equivalent USB hub.

A. Setting up the Dongle Receiver

- Plug the dongle receiver (FIG. 3) into an available USB port
- Wait for Windows to install drivers for the dongle receiver, keyboard and mouse
- When the dongle receiver has been properly initialized, its LED light will stay all

Battery Low

- Low-Battery is indicated by the illumination of the keyboard LED indicator "Batt.Low". Please replace the battery when the LED lights up.
- Low-Battery is indicated by the illumination of the Mouse Scroll. Please replace the battery when the LED lights up.
- We recommend using alkaline batteries for the keyboard.
- You may need to reset the ID's after replacing new batteries for the keyboard and mouse.

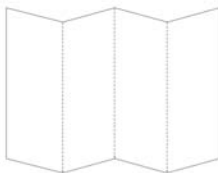
Warning

Please be careful when resetting the ID's for the keyboard, mouse and dongle receiver. Objects with sharp point may break and leave behind shards.

This device complies with part 15 of the FCC rules. Operation is subject to the following two conditions:
(1) This device may not cause harmful interference and
(2) This device must accept any interference received, including interference that may cause undesired operation

You are cautioned that changes or modifications not expressly approved by the party responsible for compliance could void your authority to operate the equipment.
This transmitter must not be co-located or operating in conjunction with any other antenna or transmitter.

TO CONVERT INTO



420.0 mm



		日期		2006/04/15	比例		1:1	單位		MM	機種		RF620	尺寸	420x300mm未折合
		設計		方慧	公差		±1.0mm	版次		1			料號	C700794005	
日期	設計	修改	內容敘述	確認	魏茂泰	材質	70p模造紙								

新巨企業股份有限公司
ZIPPY ZIPPY TECHNOLOGY CORP.