

**RF636 Manual-2.4GHz Multimedia Keyboard with Touch Pad Function**

**System requirements**

- ⦿ IBM® or 100% compatible PC
- ⦿ Microsoft Windows® Operating System
- ⦿ Pentium-equivalent processor or above
- ⦿ One available USB port

**OS support**

- ⦿ Windows 2000
- ⦿ Windows ME
- ⦿ Windows XP
- ⦿ Windows Vista

**Specifications**

**Keyboard**

- ⦿ Dimensions: 403 x 190x 26.2 mm
- ⦿ Weight: 850+/- 20g (with Battery)
- ⦿ Channel: Separate 78 channels for keyboard with unique sets ID.
- ⦿ Radio Frequency: 2.4GHz
- ⦿ Operation distance: 10 Meters
- ⦿ Key Number: 84 Keys
- ⦿ Battery: 2 x AA batteries
- ⦿ Battery Life: 2 Month (Base on average usage)
- ⦿ Hot Keys : Mute · WWW · E-mail · Previous page · Next page · Search · Refresh.

**Touch Pad**

- ⦿ Dimensions: 45.7\*35.6\*1.12 mm

**Receiver**

- ⦿ Dimensions: 41\*16\*8 mm
- ⦿ Weight: 10.9g
- ⦿ Interface: USB 1.1

- Removal or installation of the product.
- External causes to the product, such as absence of electrical grounding, power fluctuation, failure and/or power spikes.
- Normal wear and tear.
- Any other cause not related to a product defect.

**Warning**

Do not use this product in ashy, wet or oily environments as these conditions can shorten the life of this product and may cause injury to its user(s). This is not an outdoor product. Exposing this product to the elements may cause damage to the product and/or may cause injury to its user(s). Do not use alcohol, petroleum, benzene or thinner-based solutions to clean this product. We recommend wiping this product with a damp cloth only.

**B. Setting up the Keyboard and Mouse**

1. Turn ON your keyboard by sliding the switch at bottom case. (FIG. 2)
2. Open the keyboard's battery compartment cover and insert the two pieces of AA Alkaline batteries. Make sure they are properly installed. (FIG. 3)
3. Replace the keyboard battery compartment cover.
4. Usually the keyboard has aligned in the factory, and it can be used after inserting batteries. If the keyboard and touch pad cannot be recognized from system, please follow steps below.
5. Press the ID button of receiver and the LED (RED) light will start to blink.
6. Close to the receiver and press the ID button of keyboard, and the LED (RED) light will stop blinking.
7. If the keyboard cannot be connected after setting, please repeat the step 5~7 to reset the ID button.

**Introduction**

Thank you for purchasing our RF2.4GHz wireless keyboard with touch pad function. For your own safety, please read this manual thoroughly before using this product. Place for reference when necessary.

**Contents in the package**

The following items are included in the package. Please make sure all items are accounted for as you open the package. If there was any item missing or damaged, please contact the reseller where the product was purchased or our support center.

- ⦿ 2.4GHz Wireless Keyboard x 1
- ⦿ USB 2.4GHz receiver x 1
- ⦿ User Manual x 1
- ⦿ AA Alkaline batteries x 2

**Warranty Information**

This product is backed by a One-Year Manufacturer's Warranty, starting from the date of purchase. The warranty covers for free repair in accordance with the contents stated herein but does not cover wear and tear and any malfunction or damages as results of improper usage as stated in this manual. *This warranty DOES NOT COVER:*

1. Any product with defaced, modified or removed serial numbers.
2. Damage, deterioration or malfunction resulting from:
  - Accidents, misuse, negligence, and natural hazards including: fire, water, lightning and/or other acts of nature.
  - Any unauthorized modifications not complying with the standard product, or failure to follow instructions supplied with the product.
  - Repair or attempted repair by unauthorized personnel.
  - Shipping damage; consult with your retailer if the product is suspected of being damaged during shipping.

**Installation Procedure**

Before installing this product please make sure you have one available USB port reserved for the receiver.

**A. Setting up the Dongle Receiver**

1. Plug the receiver into an available USB port. (FIG. 1)
2. Wait for Windows to install drivers for the receiver and keyboard.
3. When the receiver has been properly initialized, its LED light will stay light.

**Battery Low**

If you feel the touch pad does not move smoothly or keyboard does not work when typing, then the batteries have lost their charge, so please replace them. Also, the LED light will be blinking "Red" when there is a battery-low situation.

1. Low-Battery is indicated by the illumination of the Keyboard Top case "Batt. Low". Please replace the battery when the LED lights up.
2. We recommend using alkaline batteries for the keyboard.
3. You may need to reset the ID's after replacing new batteries for the keyboard.

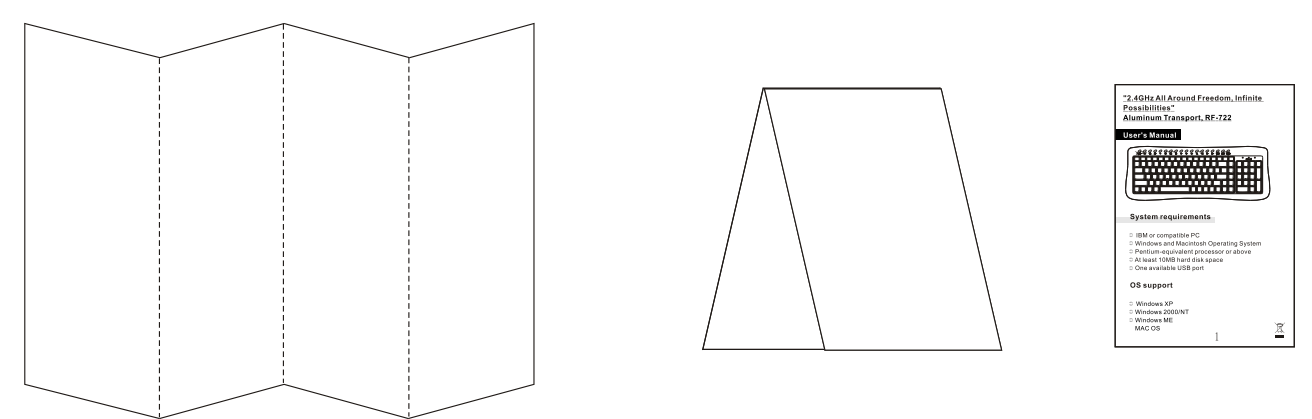
**Warning**

Please be careful when resetting the Link for the keyboard. Objects with sharp point may break and leave behind shards.


Do not mix old and new batteries, or mix different types of batteries. This can cause rupture or leakage, resulting in personal injury or property damage.

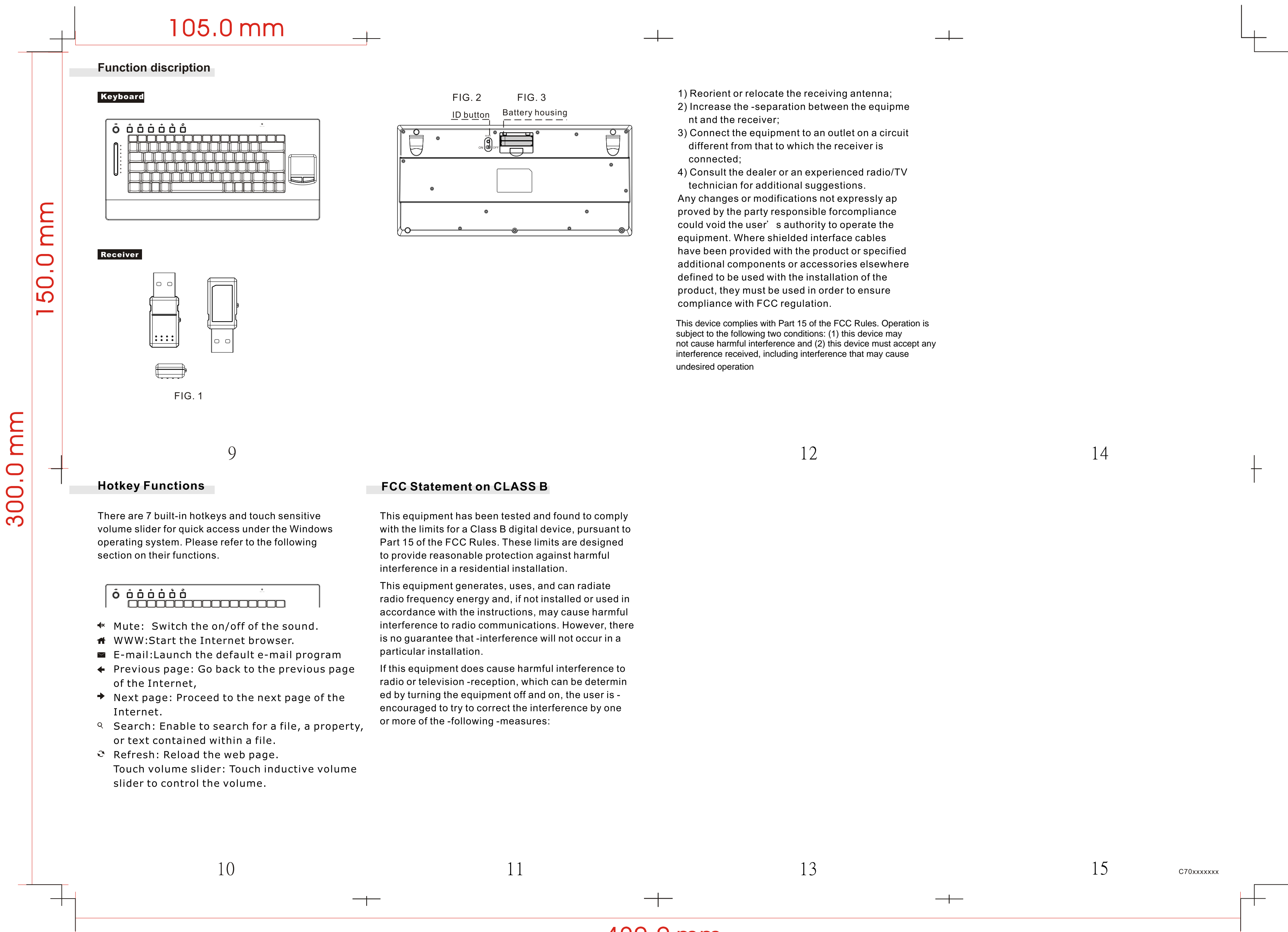
**This transmitter must not be co-located or operating in conjunction with any other antenna or transmitter.**  
**This device complies with part 15 of the FCC rules. Operation is subject to the following two conditions:**  
**(1) This device may not cause harmful interference and**  
**(2) This device must accept any interference received, including interference that may cause undesired operation**

TO CONVERT INTO



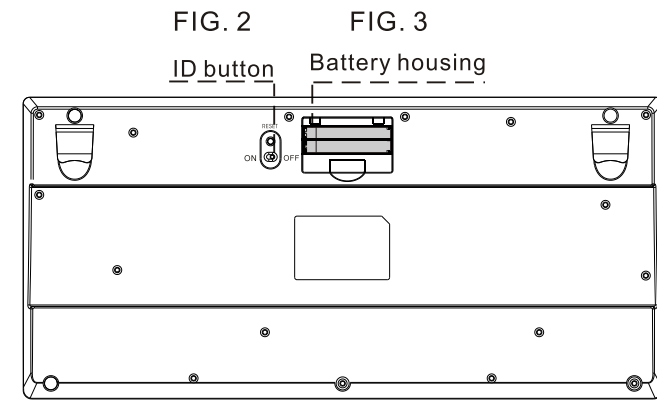
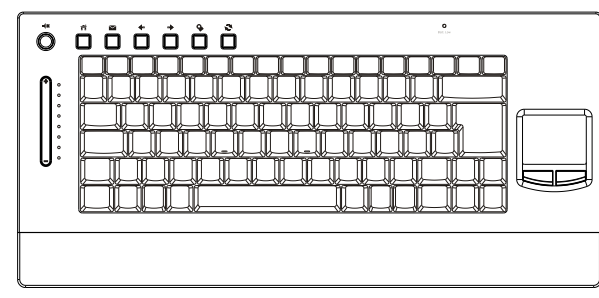
420.0 mm

										尺寸	420x300mm未折合
										料號	C701324001
△2				日期	2006/02/05	比例	1:1	單位	MM	機種	
△1				設計	方慧	公差	±1.0mm	版次	1		
	日期	設計	修改內容敘述	確認	魏茂秦	材質	70p模造紙				
										 <b>新巨企業股份有限公司</b> <b>ZIPPY TECHNOLOGY CORP.</b>	



**Function discription**

**Keyboard**



**Receiver**

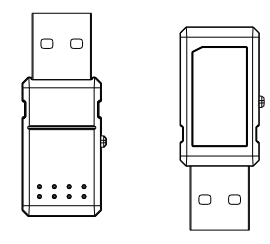


FIG. 1

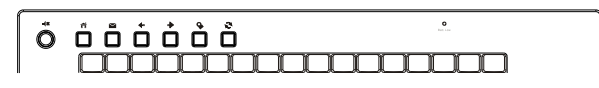
- 1) Reorient or relocate the receiving antenna;
- 2) Increase the -separation between the equipme nt and the receiver;
- 3) Connect the equipment to an outlet on a circuit different from that to which the receiver is connected;
- 4) Consult the dealer or an experienced radio/TV technician for additional suggestions.

Any changes or modifications not expressly ap proved by the party responsible for compliance could void the user' s authority to operate the equipment. Where shielded interface cables have been provided with the product or specified additional components or accessories elsewhere defined to be used with the installation of the product, they must be used in order to ensure compliance with FCC regulation.

This device complies with Part 15 of the FCC Rules. Operation is subject to the following two conditions: (1) this device may not cause harmful interference and (2) this device must accept any interference received, including interference that may cause undesired operation

**Hotkey Functions**

There are 7 built-in hotkeys and touch sensitive volume slider for quick access under the Windows operating system. Please refer to the following section on their functions.



- ⌘ Mute: Switch the on/off of the sound.
- 🌐 WWW: Start the Internet browser.
- ✉ E-mail: Launch the default e-mail program
- ⏪ Previous page: Go back to the previous page of the Internet,
- ⏩ Next page: Proceed to the next page of the Internet.
- 🔍 Search: Enable to search for a file, a property, or text contained within a file.
- 🔄 Refresh: Reload the web page.
- 🔊 Touch volume slider: Touch inductive volume slider to control the volume.

**FCC Statement on CLASS B**

This equipment has been tested and found to comply with the limits for a Class B digital device, pursuant to Part 15 of the FCC Rules. These limits are designed to provide reasonable protection against harmful interference in a residential installation.

This equipment generates, uses, and can radiate radio frequency energy and, if not installed or used in accordance with the instructions, may cause harmful interference to radio communications. However, there is no guarantee that -interference will not occur in a particular installation.

If this equipment does cause harmful interference to radio or television -reception, which can be determin ed by turning the equipment off and on, the user is - encouraged to try to correct the interference by one or more of the -following -measures:

10

11

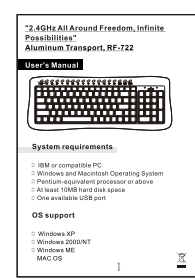
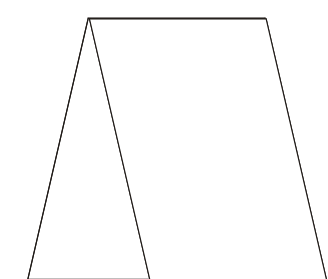
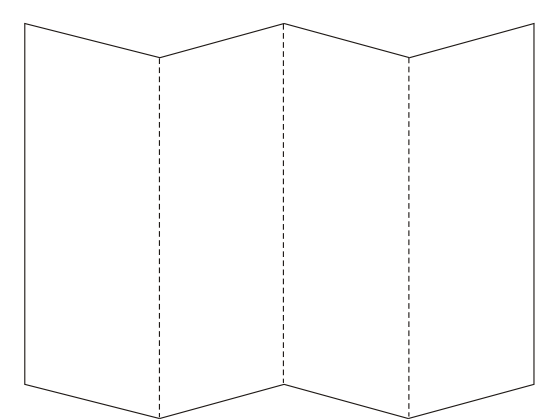
13

15

C70xxxxxx

420.0 mm

TO CONVERT INTO



										尺寸	420x300mm未折合
										料號	C701324001
②				日期	2006/02/05	比例	1:1	單位	MM	機種	
①				設計	方慧	公差	±1.0mm	版次	1		
	日期	設計	修改內容敘述	確認	魏茂秦	材質	70p模造紙				

