

Nobis

Intel Tablet NBW7800 C Quick Start Guide

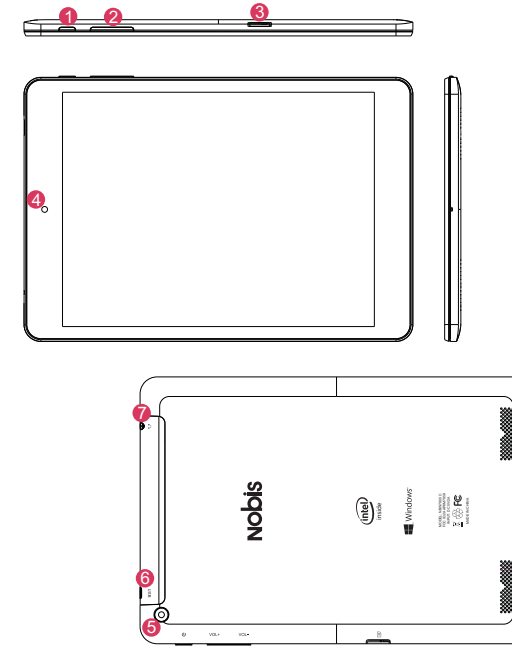


190mm

100mm

Key Layout and Definitions

All view ID:



- 1 Power/Lock key: Power ON/OFF when held about 3 seconds. Unlock Stand-by Mode.
- 2 Volume-/+Key: Decrease/Increase audio volume.
- 3 Micro SD card slot.
- 4 Front Camera: 2MP camera on front of tablet.
- 5 Rear Camera: 2MP camera on back of tablet.
- 6 Micro USB Port: Connect to a computer via micro USB cable for transfer data.
- 7 Earphone Jack
- 8 MIC Jack: Microphone.
- 9 Speaker: Dual Speakers.

Introduction To Desktop

On Window 8.1 home screen, just click on the icon to start the application. You may need to log on to your Microsoft account before the application runs properly.



Image slide applications

Slide to right



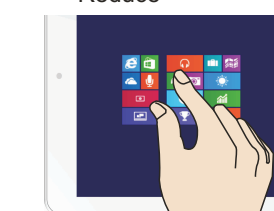
Slide to the right from the left side for desktop screen program in running.

Slide to left



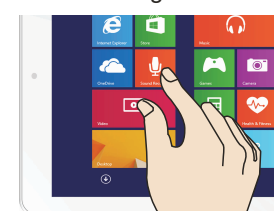
Slide to the left from the right side of the screen to start Charm menu column.

Reduce



On the touch screen, narrow two fingers to reduce the image.

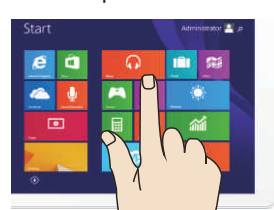
Enlarge



On the touch screen, widen two fingers to enlarge the image.

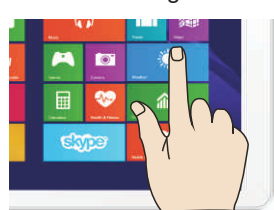
Introduction To Desktop

Slide upward



In the start screen, slide upward from the bottom of the screen to visit all icon (APPS) interfaces.

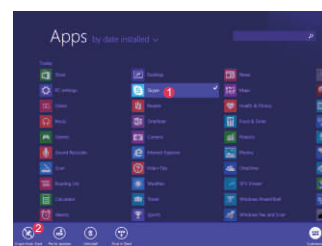
Slide with finger



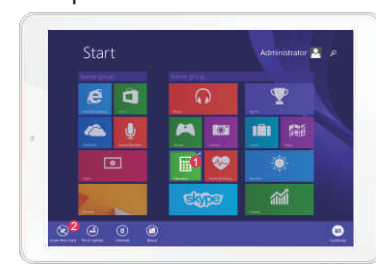
In start screen, slide finger right and left to move the image

Introduction To App Interface

If you want to fix more application programs on the start interface, see the operation in the figure below, (1) lightly touch, press and hold the application program magnet for about one second and then let it go, and select (2) to fix to the start screen.

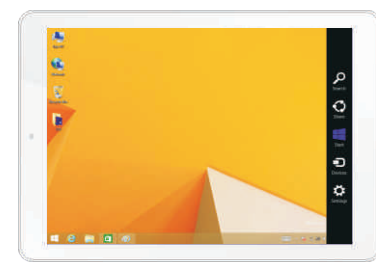


Conversely, if you want to cancel or delete certain application in the start screen, (1) lightly touch, press and hold the application program magnet for about one second and then let it go and run, and select (2) attribute column to cancel the programs such as fixation and deletion and then it can be completed.



Charm Menu Column

Slide to the left from the right side of the screen to start Charm menu column, including: Start, Device, Setup, Share, and Search Program.



Can let you search the files and application programs in the Tablet PC.

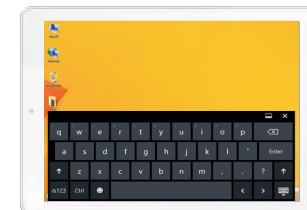
Can let you share the program through social exchange website or e-mail.

Can return to the start screen. From the start screen, you can also use this function to return the application program that is opened in the latest.

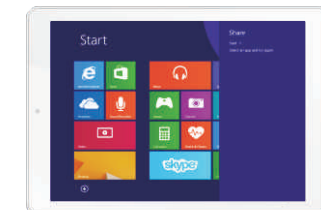
Can let you read, write and share files, connect external screen or printer with the device connected to the Tablet PC.

Can let you set up the Table PC.

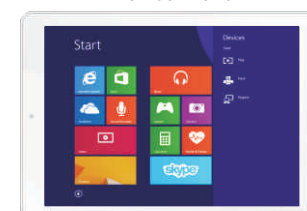
Search Menu



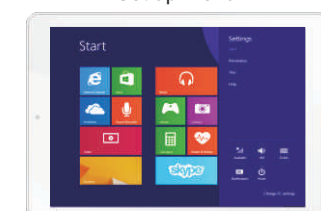
Share Menu



Device Menu



Set up Menu

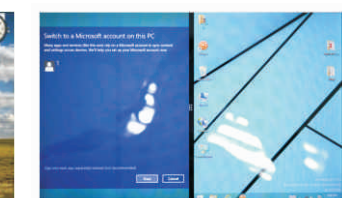


Dual-Screen Application

On my computer in (Figure 1), slide it inward from the left side of the screen, (drag it and hold. Let go when seeing double interfaces appear. In (Figure 2), press the partition button on the middle partition line and drag right and left to partition the display proportion of the double screens.



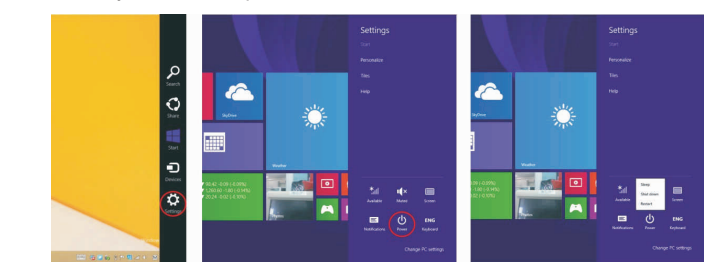
(Figure 1)



(Figure 2)

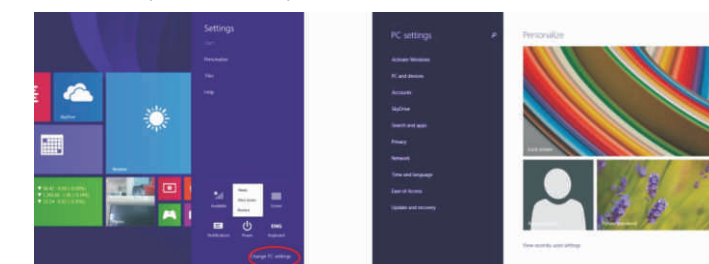
Basic Operations

Dormancy, restart and power off



Security Management

User and password setup



Method for quick setup:

Click the "Setup" button in "Charm" setup, and select "Change computer setup". Select "User" on the left and click "Create local account" in "Your account" on the right side. After inputting the password of Complete Windows Live Id Account, input username, password, confirm password and password prompt.

Compliance Information

FCC NOTICE

The following statement applies to all products that have received FCC approval. Applicable products bear the FCC logo, and/or an FCC ID in the format FCC ID: 2AAP6M7859 on the product label. This device complies with part 15 of the FCC Rules. Operation is subjected to the following two conditions: This device may not cause harmful interference, and this device must accept any interference received, including interference that may cause undesired operation. This device has been tested and found to comply with the limits for a Class B digital device, pursuant to Part 15 of the FCC Rules. These limits are designed to provide reasonable protection against harmful interference in a residential installation. This equipment generates, uses and can radiate radio frequency energy and, if not installed and used in accordance with the instructions, may cause harmful interference to radio or television reception, which can be determined by turning the equipment off and on, the user is encouraged to try to correct the interference by one or more of the following measures:

- Increase the separation between the equipment and receiver.
 - Connect the equipment into an outlet on a circuit different from that to which the receiver is connected.
 - Consult the dealer or an experienced radio/TV technician for help.
- Changes or modifications not expressly approved by the party responsible for compliance could void the user's authority to operate the equipment. The antenna(s) used for this transmitter must not be co-located or operating in conjunction with any other antenna or transmitter.

RF EXPOSURE INFORMATION (FCC SAR)

DEVICE MEETS THE GOVERNMENT'S REQUIREMENTS FOR EXPOSURE TO RADIO WAVES. This device is designed and manufactured not to exceed the emission limits for exposure to radio frequency (RF) energy set by the Federal Communications Commission of the U.S. Government. The exposure standard for wireless mobile devices employs a unit of measurement known as the Specific Absorption Rate, or SAR. The SAR limit set by the FCC is 1.6W/kg. Tests for SAR are conducted using standard operating positions accepted by the FCC with the device transmitting at its highest certified power level in all tested frequency bands. Although the SAR is determined at the highest certified power level, the actual SAR level of the device while operating can be well below the maximum value. This is because the device is designed to operate at multiple power levels so as to use only the power required to reach the network. In general, the closer you are to a wireless base station antenna, the lower the power output. The highest SAR value for the device as reported to the FCC when tested for use when worn on the body, as described in this user guide, is 0.532 W/kg. (Body-worn measurements differ among device models, depending upon available accessories and FCC requirements.) While there may be differences between the SAR levels of various devices and at various positions, they all meet the government requirement. The FCC has granted an Equipment Authorization for this device with all reported SAR levels evaluated as in compliance with the FCC RF exposure guidelines. SAR information on this device is on file with the FCC and can be found under the Display Grant section of www.fcc.gov/oet/ea/fccid/ after searching on FCC ID: 2AAP6M7859

Warranty

TO OBTAIN WARRANTY SERVICE
Contact Nobis Technical Support
Bidwell Technologies Inc
Web site: www.bidwelltec.com
from 8:30AM to 5:00PM Monday through Friday Pacific Time.

Thank you for your interest in our Nobis Android Tablets. We appreciate your business and if you need to get help just reach out to support@bidwelltec.com

Life-time tech support

Simply register your Nobis Tablet at www.bidwelltec.com. As long as you own your Nobis Tablet we can provide you with Quick Set Up guides for your tablet or answer a quick "How does this work again" call or email to our Customer Service Department. However you MUST register within 60 days of purchase.

Please note, Normal Product Warranty is separate and should be read and understood as well.