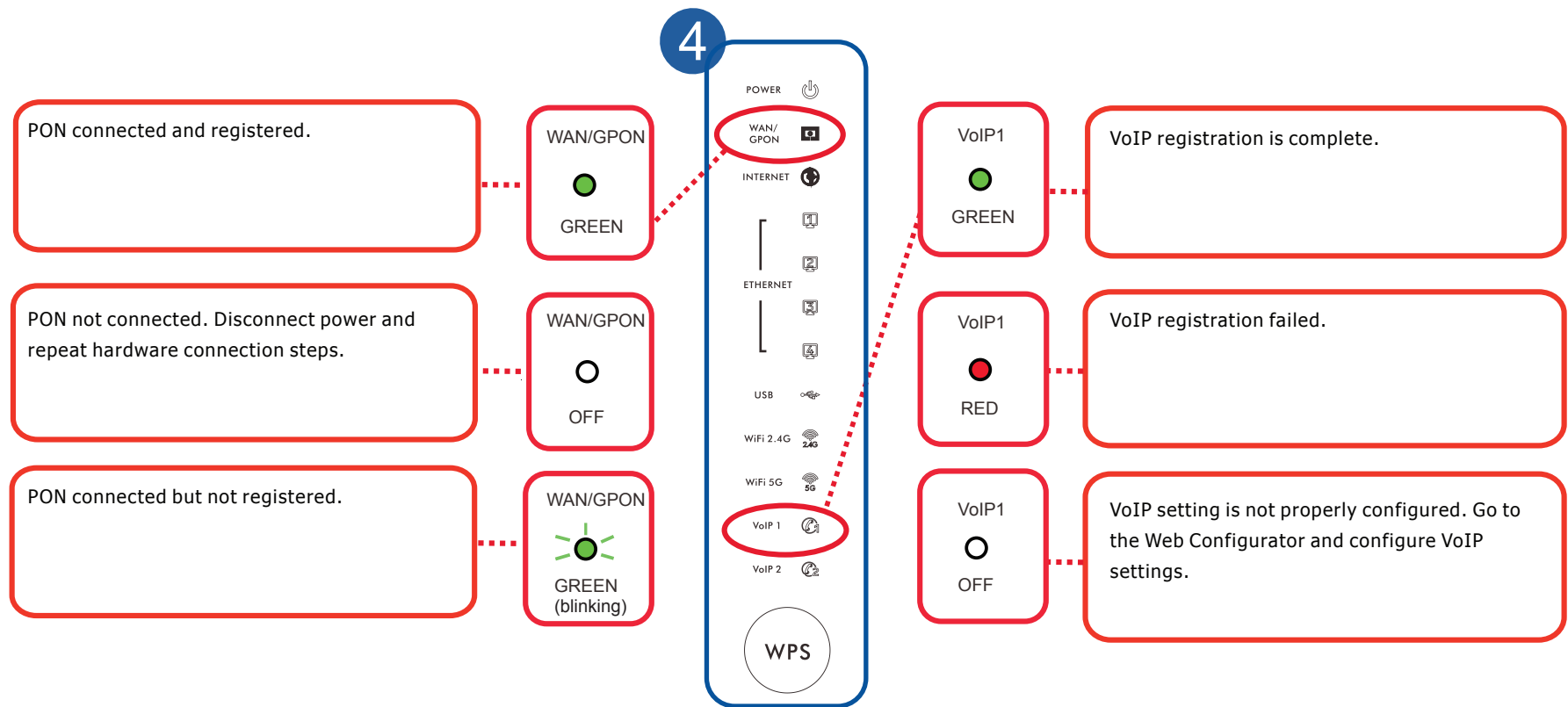
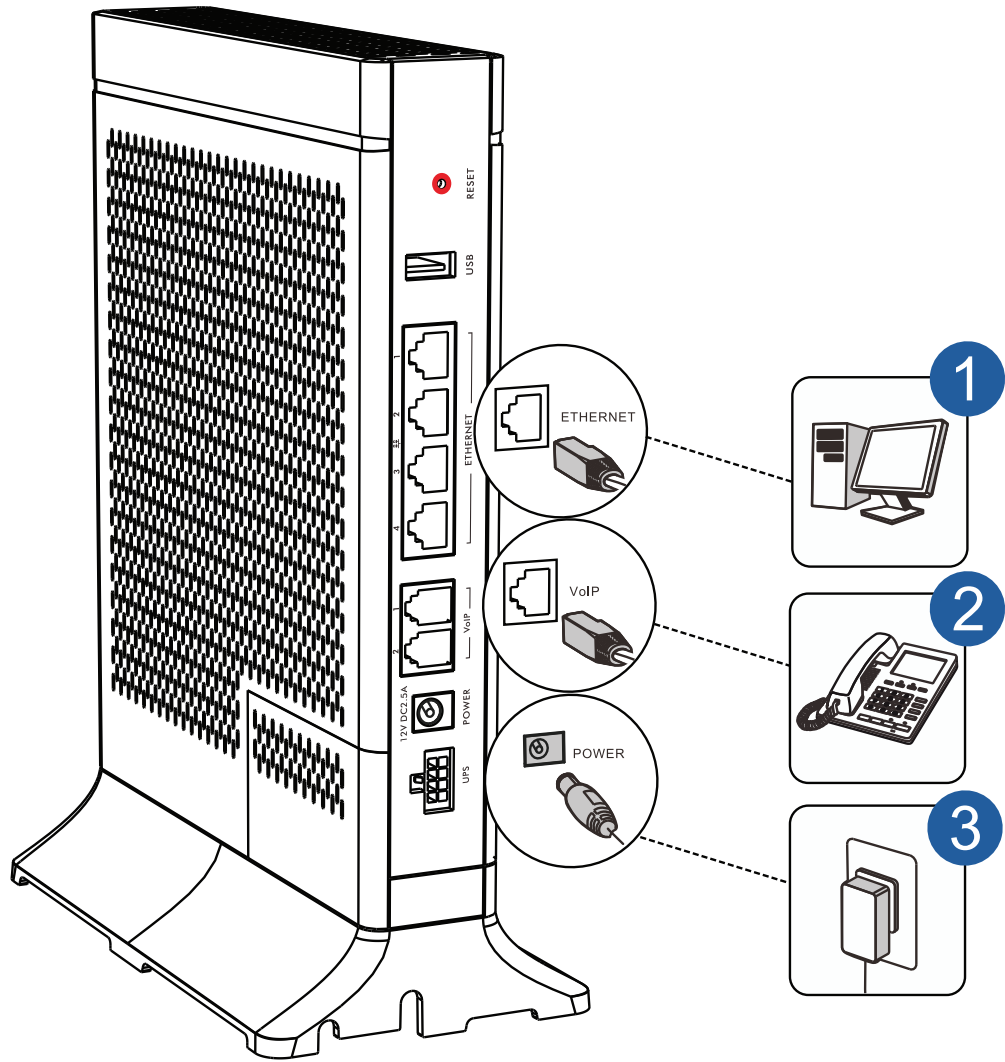


Quick Start Guide

Hardware Connections

- 1** Connect a computer using an Ethernet cable.
- 2** Connect a phone.
- 3** Connect the power.
- 4** Make sure the LEDs are on and check the GPON and VoIP LEDs.



Internet Setup



Browser address bar: `http://192.168.1.1`

IP Address: 192.168.1.1

1. Enter the administrator username and password below.

Administrator Username:

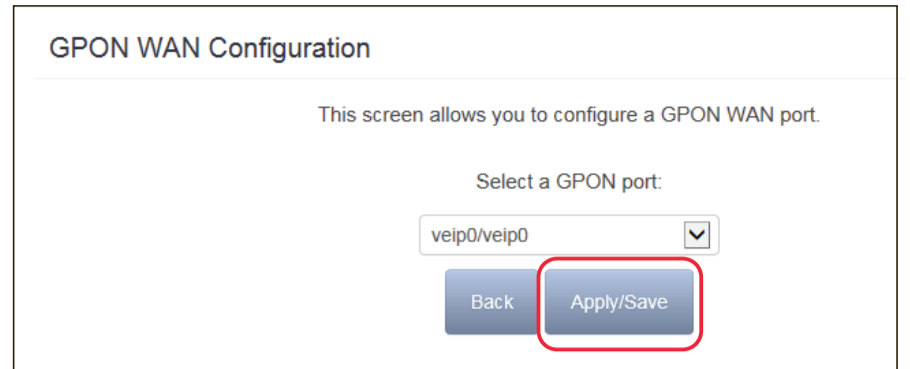
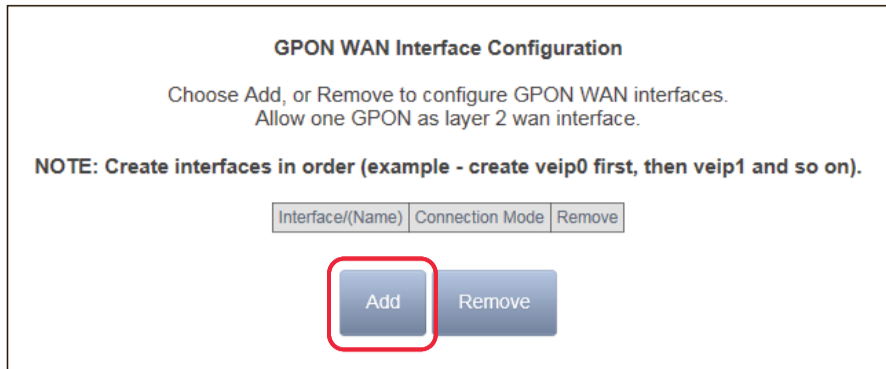
Administrator Password:

Show Password The default administrator username and password can be found on the sticker located under the modem.

2. Click "Apply" to log in.

Username: admin
Password: 1234

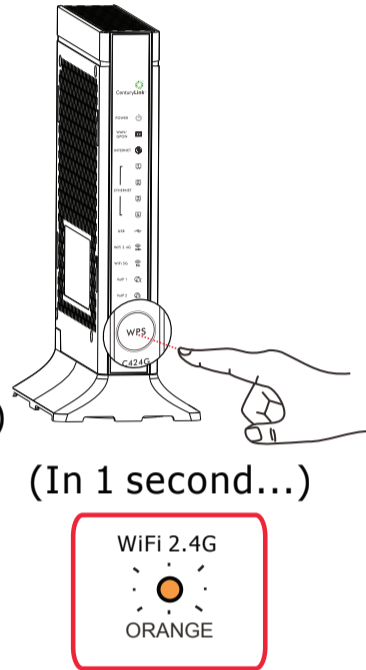
Advanced Setup > Layer2 Interface > GPON Interface



Wireless WPS

- 1** Press the WPS button until the WiFi 2.4G LED flashes in orange.
- 2** Press the WPS button on the client.

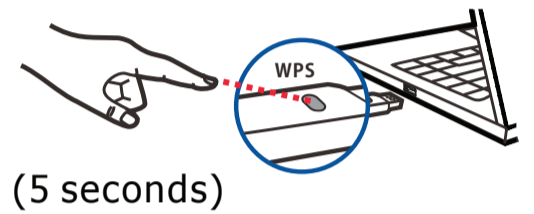
1



(>5 seconds)

(In 1 second...)

2



(5 seconds)

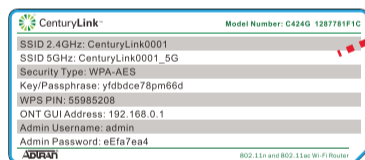


(Within 2 Minutes)

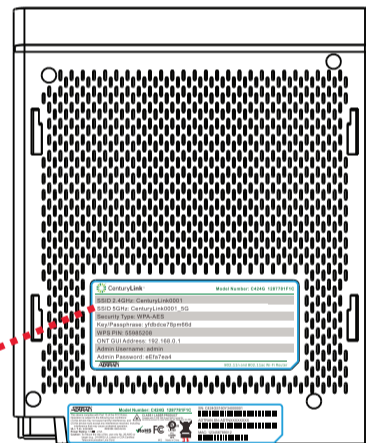
No WPS

- 1** The SSID and wireless key are on the device's bottom sticker.
- 2** Find the device with its SSID. Enter wireless key to connect.

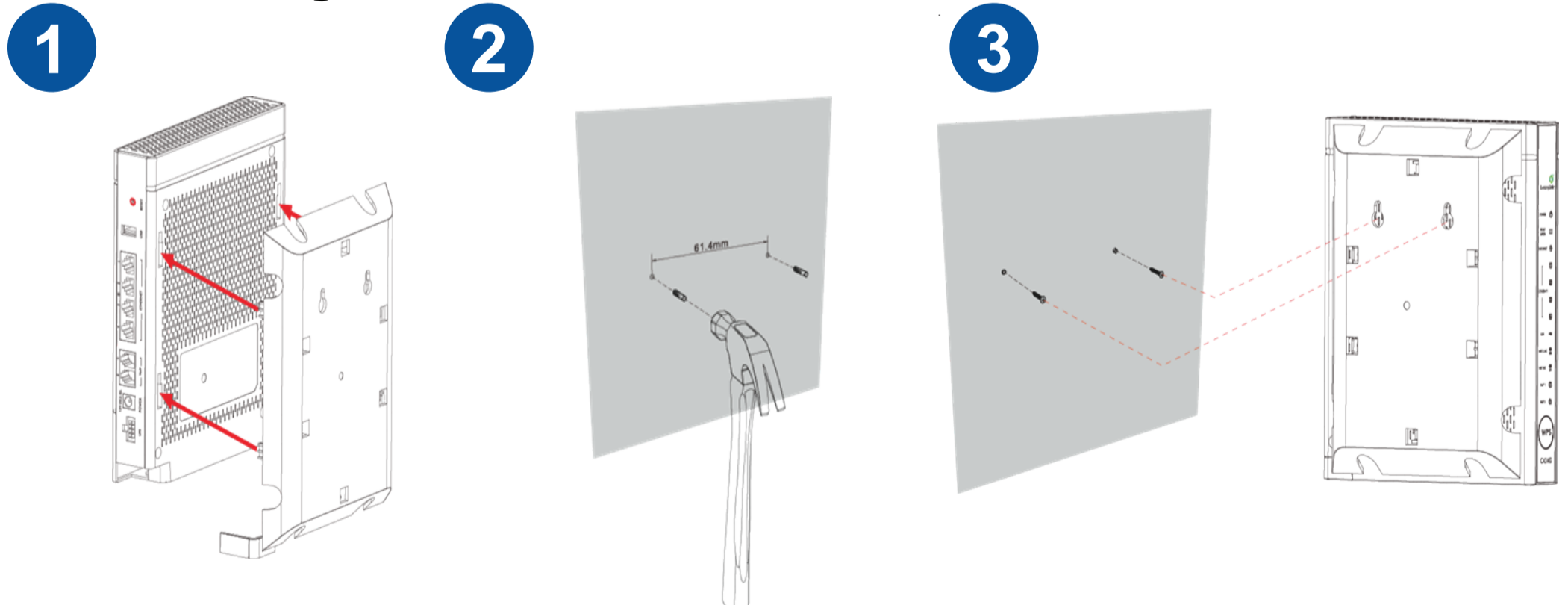
1



2



Wall Mounting



See the User's Guide at www.zyxel.com for more information.

Federal Communications Commission (FCC) Interference Statement

This equipment has been tested and found to comply with the limits for a Class B digital device, pursuant to Part 15 of the FCC Rules.

These limits are designed to provide reasonable protection against harmful interference in a residential installation. This equipment generate, uses and can radiate radio frequency energy and, if not installed and used in accordance with the instructions, may cause harmful interference to radio communications.

However, there is no guarantee that interference will not occur in a particular installation. If this equipment does cause harmful interference to radio or television reception, which can be determined by turning the equipment off and on, the user is encouraged to try to correct the interference by one of the following measures:

- Reorient or relocate the receiving antenna.
- Increase the separation between the equipment and receiver.
- Connect the equipment into an outlet on a circuit different from that to which the receiver is connected.
- Consult the dealer or an experienced radio/TV technician for help.

This device complies with Part 15 of the FCC Rules. Operation is subject to the following two conditions:

- (1) This device may not cause harmful interference, and
- (2) This device must accept any interference received, including interference that may cause undesired operation.

FCC Caution: Any changes or modifications not expressly approved by the party responsible for compliance could void the user's authority to operate this equipment.

RF exposure warning

This equipment complies with FCC radiation exposure limits set forth for an uncontrolled environment.

This equipment complies with FCC radiation exposure limits set forth for an uncontrolled environment. This equipment must be installed and operated in accordance with provided instructions and the antenna(s) used for this transmitter must be installed to provide a separation distance of at least 20cm from all persons and must not be collocated or operating in conjunction with any other antenna or transmitter.