

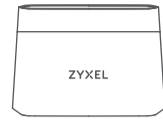
EX2210-T0
Dual-Band Wireless AX1800 Gigabit Ethernet Gateway



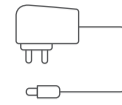
Quick Start Guide

ENGLISH | ESPAÑOL | FRANÇAIS

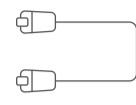
Package Contents



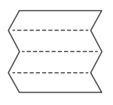
Device



Power Cable



Ethernet Cable



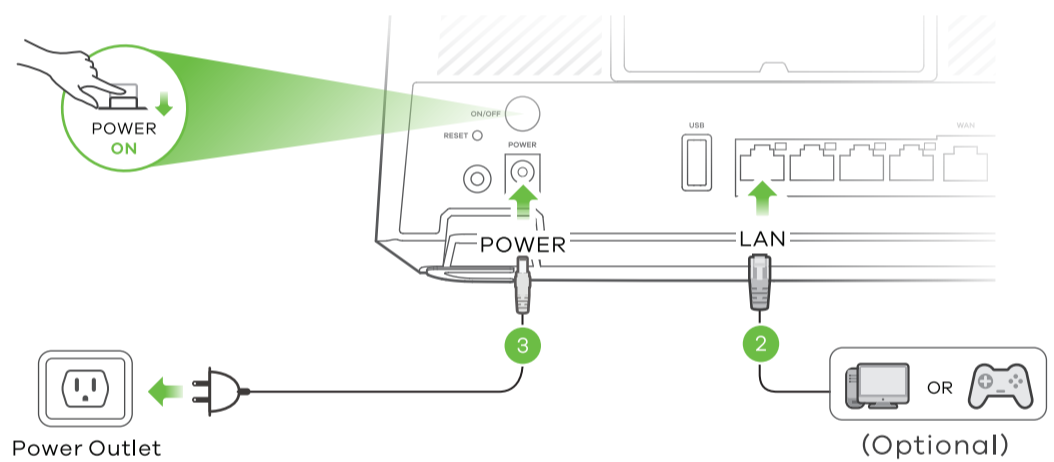
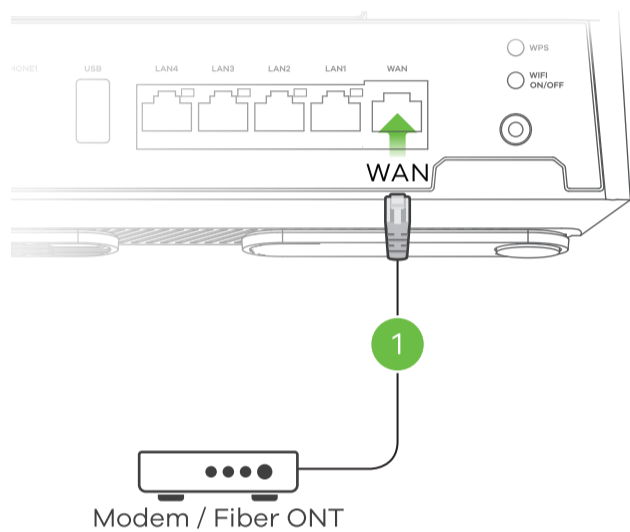
Quick Start Guide

US Importer

Zyxel Communications, Inc
1130 North Miller Street Anaheim, CA 92806-2001
<https://www.zyxel.com/us/en/>

Copyright © 2022 Zyxel Communications Corp. All Rights Reserved.

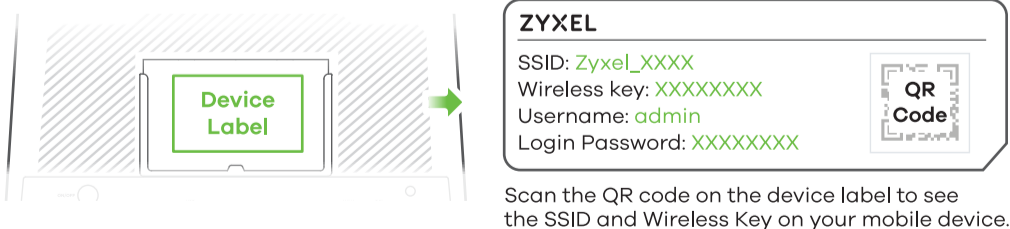
Step 1 Hardware Connections



INTERNET	Green On	Internet is ready.
	Blinking	Transmitting/receiving Internet data.
	Red On	Attempted to get an IP address, but failed.
	---	Off - Internet is not ready.
POWER	Green On	Power is on.
	Blinking	Starting up.
	Red On	Malfunctioning.
	Blinking	Upgrading firmware.

Step 2 WiFi Connection

4-a Using SSID

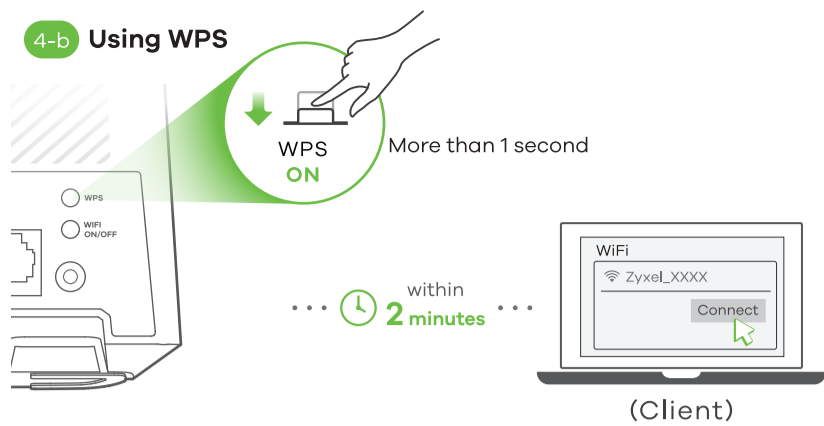


EN 4-a Use the **SSID** and **Wireless key** on the device label to connect wirelessly to the Zyxel Device. On your smartphone or notebook, find this **SSID**. Enter the **Wireless key** to connect.

ES 4-a El **SSID** y la contraseña inalámbrica están en la etiqueta del Dispositivo. En su smartphone o portátil, busque este **SSID**. Escriba la contraseña de conexión inalámbrica para conectar.

FR 4-a Le **SSID** et la clé WiFi se trouve sur l'étiquette au dos de l'équipement. Sur votre smartphone ou votre ordinateur portable, trouvez ce **SSID**. Saisissez la clé sans fil pour vous connecter.

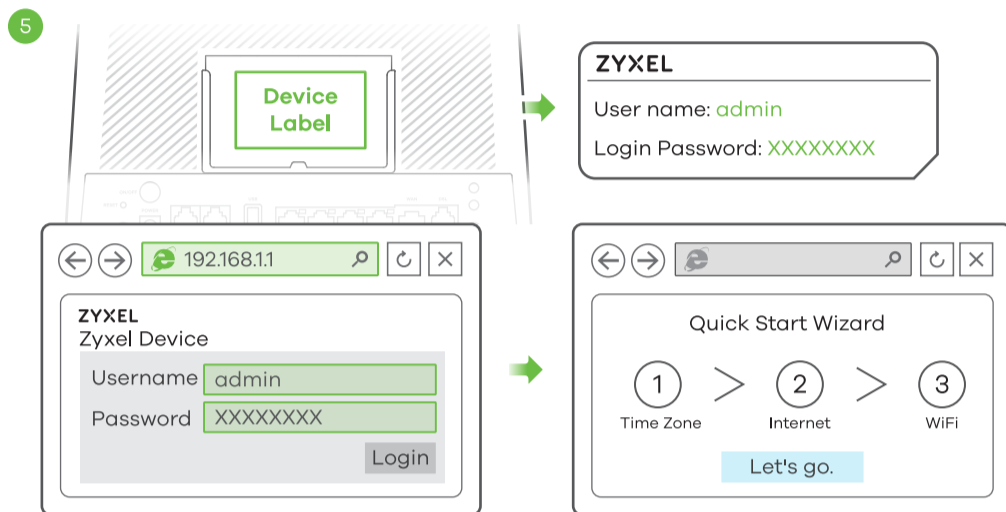
4-b Using WPS



	Amber Blinking - The Zyxel Device is connecting to 2.4 GHz WiFi via WPS. Green On - 2.4 GHz WiFi is ready. Blinking - Transmitting/receiving data.
	Amber Blinking - The Zyxel Device is connecting to 5 GHz WiFi via WPS. Green On - 5 GHz WiFi is ready. Blinking - Transmitting/receiving data.

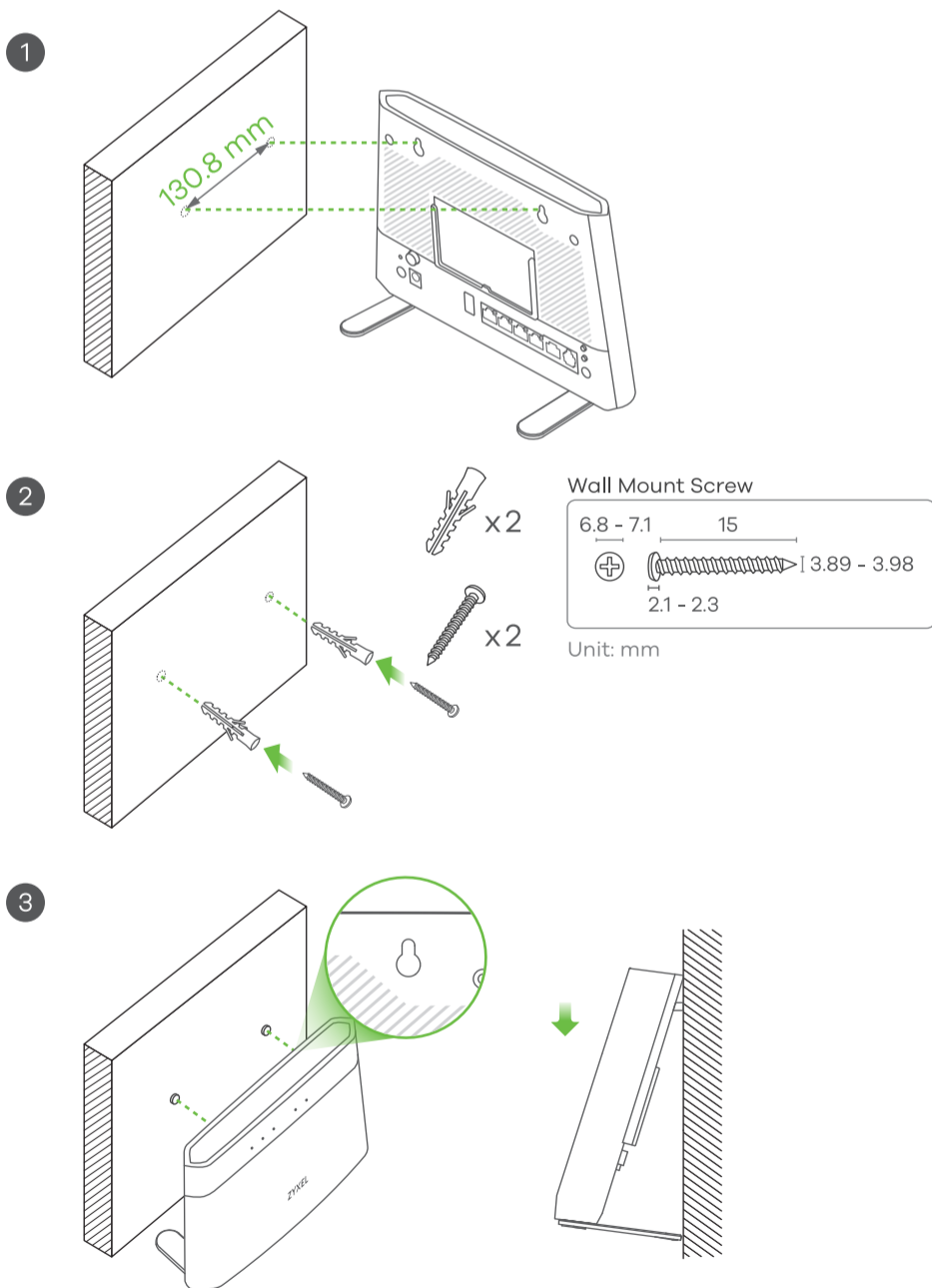
- EN** (4-b) Press the **WPS** button until the WiFi 2.4G and 5G LEDs light up in amber.
Press the **WPS** button on the client. If the WPS method fails, use the SSID and wireless key to set up a WiFi connection (4-a).
- ES** (4-b) Presione el botón **WPS** hasta que los LEDs de WiFi 2.4G y 5G se enciendan en naranja.
Pulse el botón **WPS** en el Cliente. Si el método WPS no funciona, siga No WPS como método (4-a).
- FR** (4-b) Appuyez sur le bouton **WPS** jusqu'à ce que les voyants LED WiFi 2.4G et 5G s'allument en orange.
Appuyez sur le bouton **WPS** de l'équipement client. Si la méthode WPS échoue, utilisez la méthode non WPS (4-a).

Step 3 Quick Start Wizard



- EN** (5) Open a web browser and go to <http://192.168.1.1>. Enter the default **User name (admin)** and **admin Login Password** (on the device label), and then click **Login**. The Wizard runs. Follow the Wizard prompts to complete the setup.
- ES** (5) Abra un explorador web y vaya a <http://192.168.1.1>. Escriba el **Nombre de usuario (admin)** y la contraseña de inicio de sesión **admin** (en la etiqueta del dispositivo), a continuación haga clic en **Iniciar sesión (Login)**. Se abrirá un asistente. Siga las instrucciones del asistente.
- FR** (5) Ouvrez un navigateur Web et entrez l'adresse à <http://192.168.1.1>. Entrez le **nom d'utilisateur (admin)** par défaut et le mot de passe d'administrateur (sur l'étiquette de l'appareil), puis cliquez sur **Connexion (Login)**. Un assistant se lance. Suivez les instructions de l'assistant.

Wall Mounting (Optional)



- EN** (Optional)
- Drill two holes on the wall at the distance of 130.8 mm.
 - Insert screw anchors and screws (not provided) into the holes.
 - Place the Zyxel Device so the wall mount holes line up with the screws. Slide the Zyxel Device down gently to fix it into place.
- ES** (Opcional)
- Perfore dos agujeros en la pared a una distancia de 130.8 mm.
 - Inserte los tacos de los tornillos (no incluidos) en los agujeros.
 - Coloque el Zyxel Device de forma que los orificios del soporte queden alineados con los tornillos. Deslice suavemente el Zyxel Device hacia abajo para que quede bien encajado.
- FR** (Option)
- Percez deux trous sur le mur espacés de 130.8 mm.
 - Insérez les chevilles et les vis (non fournies) dans les trous.
 - Placez le Zyxel Device de sorte que les trous de montage mural soient alignés avec les vis. Faites glisser doucement le Zyxel Device pour le mettre en place.

FCC UNITED STATES of AMERICA

The following information applies if you use the product within the USA.

FCC EMC Statement

- This device complies with part 15 of the FCC Rules. Operation is subject to the following two conditions:
 - (1) This device may not cause harmful interference, and
 - (2) This device must accept any interference received, including interference that may cause undesired operation.
- This product has been tested and complies with the specifications for a Class B digital device, pursuant to Part 15 of the FCC Rules. These limits are designed to provide reasonable protection against harmful interference in a residential installation. This equipment generates, uses, and can radiate radio frequency energy and, if not installed and used according to the instructions, may cause harmful interference to radio communications. However, there is no guarantee that interference will not occur in a particular installation.
- If this device does cause harmful interference to radio or television reception, which is found by turning the equipment off and on, the user is encouraged to try to correct the interference by one or more of the following measures:
 - Reorient or relocate the receiving antenna
 - Increase the separation between the equipment or devices
 - Connect the equipment to an outlet other than the receiver's
 - Consult a dealer or an experienced radio/TV technician for assistance

The following information applies if you use the product with RF function in the USA.

FCC Caution

Any changes or modifications not expressly approved by the party responsible for compliance could void the user's authority to operate this equipment.

FCC Radiation Exposure Statement

This equipment complies with FCC RF radiation exposure limits set forth for an uncontrolled environment.

This transmitter must be at least 20 cm from the user and must not be co-located or operating in conjunction with any other antenna or transmitter.

Operation of this device is restricted to indoor use only, except for relevant user's manual mention that this device can be installed into the external environment.