

ZyAIR G-110

802.11g Wireless CardBus Card

Quick Installation Guide

Version 1.10

March 2004



FCC Statement

Warning: Changes or modifications to this unit not expressly approved by the party responsible for compliance could void the user authority to operate the equipment.

This device complies with Part 15 of the FCC Rules. Operation is subject to the following two conditions: (1) this device may not cause harmful interference, and (2) this device must accept any interference received, including interference that may cause undesired operation.

The users manual or instruction manual for an intentional or unintentional radiator shall caution the user that changes or modifications not expressly approved by the party responsible for compliance could void the user's authority to operate the equipment.

NOTE: This equipment has been tested and found to comply with the limits for a Class B digital device, pursuant to Part 15 of the FCC Rules. These limits are designed to provide reasonable protection against harmful interference in a residential installation. This equipment generates, uses and can radiate radio frequency energy and, if not installed and used in accordance with the instructions, may cause harmful interference to radio communications.

However, there is no guarantee that interference will not occur in a particular installation. If this equipment does cause harmful interference to radio or television

reception, which can be determined by turning the equipment off and on, the user is encouraged to try to correct the interference by one or more of the following measures:

- Reorient or relocate the receiving antenna.
- Increase the separation between the equipment and receiver.
- Connect the equipment into an outlet on a circuit different from that to which the receiver is needed.
- Consult the dealer or an experienced radio/TV technician for help.



CAUTION:

1. To comply with FCC RF exposure compliance requirements, a separation distance of at least 20 cm must be maintained between the antenna of this device and all persons.
2. This Transmitter must not be co-located or operating in conjunction with any other antenna or transmitter

This device is intended only for OEM integrators under the following conditions:

- 1) The antenna must be installed such that 20 cm is maintained between the antenna and users. For laptop installations, the antenna must be installed to ensure that the proper spacing is maintained in the event the users places the device in their lap during use (i.e. positioning of antennas must be placed in the upper portion of the

LCD panel only to ensure 20 cm will be maintained if the user places the device in their lap for use) and

2) The transmitter module may not be co-located with any other transmitter or antenna.

As long as the 2 conditions above are met, further transmitter testing will not be required. However, the OEM integrator is still responsible for testing their end-product for any additional compliance requirements required with this module installed (for example, digital device emissions, PC peripheral requirements, etc.).

IMPORTANT NOTE: In the event that these conditions can not be met (for example certain laptop configurations or co-location with another transmitter), then the FCC authorization is no longer considered valid and the FCC ID can not be used on the final product. In these circumstances, the OEM integrator will be responsible for re-evaluating the end product (including the transmitter) and obtaining a separate FCC authorization.

End Product Labeling

This transmitter module is authorized only for use in devices where the antenna may be installed such that 20 cm may be maintained between the antenna and users (for example access points, routers, wireless ASDL modems, certain laptop configurations, and similar equipment). The final end product must be labeled in a visible area with the following: "Contains TX FCC ID: I88G110".

RF Exposure Manual Information That Must be Included

The users manual for end users must include the following information in a prominent location "IMPORTANT NOTE: To comply with FCC RF exposure

compliance requirements, the antenna used for this transmitter must be installed to provide a separation distance of at least 20 cm from all persons and must not be co-located or operating in conjunction with any other antenna or transmitter."

Additional Information That Must be Provided to OEM Integrators

The end user should NOT be provided any instructions on how to remove or install the device.

Customer Support in U.S.A.

ZyXEL Communications Inc.

1130 North Miller Street, Anaheim, CA 92806-2001 U.S.A.

Tel: +1-714-632-0882

Fax: +1-714-632-0858

Email: sales@zyxel.com

<http://www.us.zyxel.com>

About Your ZyAIR

The ZyAIR is an IEEE 802.11g compliant wireless LAN PC card that fits into any CardBus slot. With the ZyAIR, you can enjoy the wireless mobility within the coverage area. The IEEE 802.11g technology provides greater range and offers transmission rate at up to 54 Mbps.

1. Installation Requirements

Before installation, make sure you have the following requirements.

- Pentium II 300MHz or above
- A minimum of 6 MB available hard disk space
- A minimum of 32 MB RAM
- A CD-ROM drive
- A CardBus slot
- Windows 98 SE/Me/2000/XP
- Windows 98 SE users may need the Windows 98 SE CD

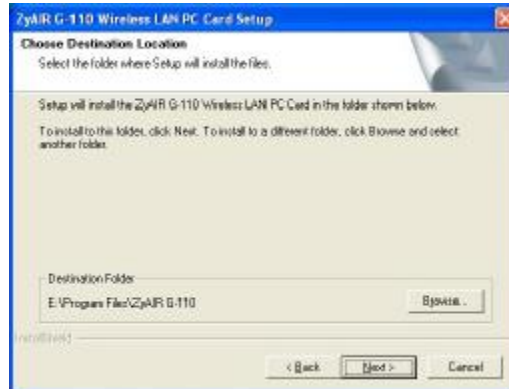
2. ZyAIR Utility and Hardware Installation

The installation procedures are similar for all supported Windows versions. Windows XP screen shots are shown unless otherwise specified.

DO NOT insert the ZyAIR at this point.

1. Insert the support CD into the CD-ROM drive on your computer. The CD auto runs. Otherwise, locate and double-click on **setup.exe**. A Welcome screen displays. Click **Next**.

2. Click **Next** to accept the default file location or click **Browse** to select an alternate folder.



3. Windows 98 SE/Me: Click **Finish** to restart the computer.
4. Locate an available CardBus slot on the computer.
5. With the pin connectors facing the slot and the LED side facing up, slide the ZyAIR into the slot. The LEDs turn on if the ZyAIR is properly inserted.



Never bend, force or twist the ZyAIR into the slot.

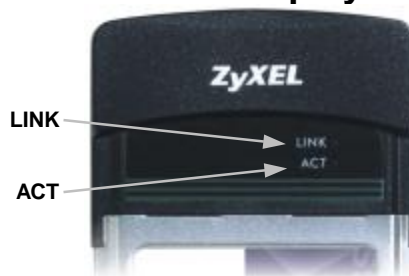
6. Windows 2000: If a warning window displays, click **Yes**.
7. Windows XP: A **Found New Hardware Wizard** window displays. Select **Install the software automatically (recommended)** and click **Next**.
8. Windows XP: If a warning window displays, click **Continue Anyway**. Then click **Finish** to complete the installation process.

After you install the ZyAIR Utility and insert the ZyAIR, an icon appears in the system tray.



If the ZyAIR Utility icon displays, the ZyAIR is installed properly. Refer to the *ZyAIR Utility User's Guide* to configure the ZyAIR.

LED Display



The following table describes the LEDs on the ZyAIR.

LED	COLOR	STATUS	DESCRIPTION
ACT	Blue	Blinking	The ZyAIR is receiving or sending data.
		Off	The ZyAIR is not receiving or sending data.
LINK	Blue	On	The ZyAIR has a connection to a wireless LAN.
		Blinking	The ZyAIR is connecting to a wireless LAN.
		Off	The ZyAIR is not connected to a wireless LAN or not receiving power.

Troubleshooting

PROBLEM	CORRECTIVE ACTION
Windows does not auto-detect the ZyAIR.	Make sure the ZyAIR is inserted into the computer CardBus slot properly and then restart your computer. Check the LEDs on the ZyAIR.
	Perform a hardware scan by clicking Start, Settings, Control Panel and double-clicking Add/Remove Hardware . (Steps may vary depending on the version of Windows). Follow the on-screen instructions to search for the ZyAIR and install the driver.
	Check for possible hardware conflicts. In Windows, click Start, Settings, Control Panel, System, Hardware and then click Device Manager . Verify the status of the ZyAIR under Network Adapter . (Steps may vary depending on the version of Windows).

PROBLEM	CORRECTIVE ACTION
	Install the ZyAIR in another computer. If the error persists, you may have a hardware problem. In this case, you should contact your local vendor.