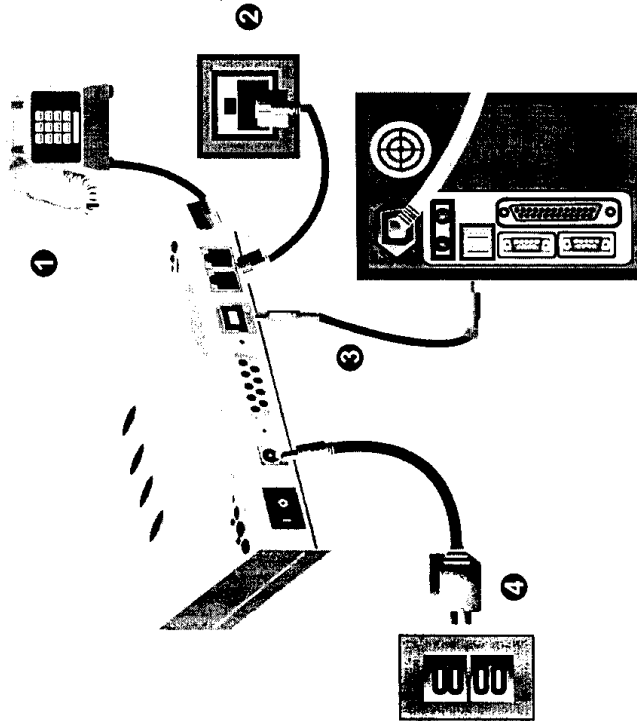


1. Making Connection via USB (For Omni 56K Plus)

Hardware Installation

- ① Connect your modem to your analog phone or fax.
- ② Use the included phone line to connect to the phone jack on the wall.
- ③ Plug one end of your USB connectors to your modem and another end to any one of available USB ports on your PC.
- ④ Use the included power adapter to connect your modem to the outlet.



Note: Be sure to use the power adapter included with your ZyXEL Omni 56K Plus package as your power supply adapter. If you use the one not appropriate for your Omni 56K Plus, then your new modem could be damaged.

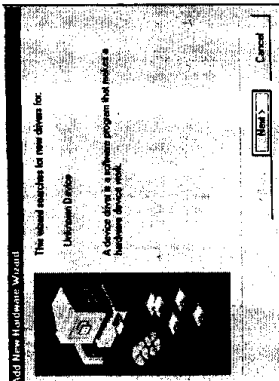
This equipment has been tested and found to comply with the limits for a Class B digital device, pursuant to Part 15 of the FCC Rules. These limits are designed to provide reasonable protection against harmful interference in a residential installation. This equipment generates, uses and can radiate radio frequency energy and, if not installed and used in accordance with the instructions, may cause harmful interference to radio communications. However, there is no guarantee that interference will not occur in a particular installation. If this equipment does cause harmful interference to radio or television reception, which can be determined by turning the equipment off and on, the user is encouraged to try to correct the interference by one of the following measures:

- Reorient or relocate the receiving antenna.
- Increase the separation between the equipment and receiver.
- Connect the equipment into an outlet on a circuit different from that to which the receiver is connected.
- Consult the dealer or an experienced radio/TV technician for help.

FCC Caution: To assure continued compliance, use the provided AC Power Adapter. Any changes or modifications not expressly approved by the party responsible for compliance could void the user's authority to operate this equipment.

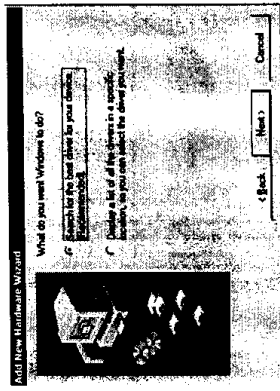
Software Installation

Follow the steps below to install your USB drivers.

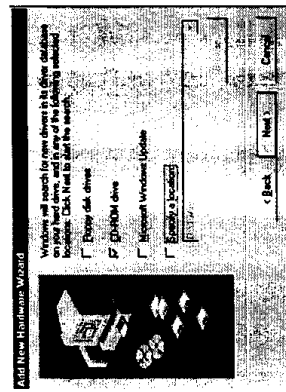


Step 1. Turn on your USB Modem. Be sure your PC is already powered on before turning on your modem. The plug and play function of your Windows 98 will detect your new device and show an installation wizard as left. Click **Next** to

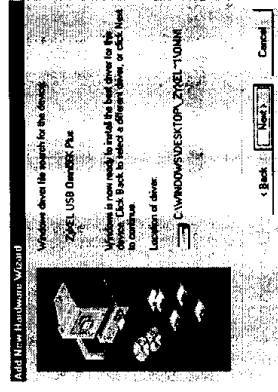
Note: If your Windows system doesn't detect your new device automatically, you may turn off your modem (or unplugging the USB cable) and reboot your Windows system, then try the above Step 1 again.



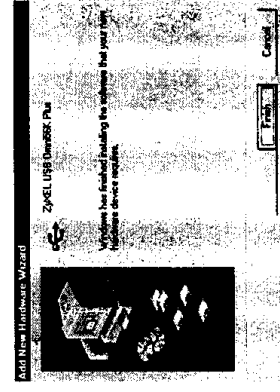
Step 2. Click **Next** to accept the default selection.



Step 3. Insert the included CD into your CD-ROM driver, select "CD-ROM drive" and then click **Next**.



Step 4. The installation wizard has found the location of your USB drivers. Click **Next** to continue.



Step 5. ZyXEL USB modem has been successfully installed in your computer. Click **Finish** then follow the wizard to complete the drivers installation.

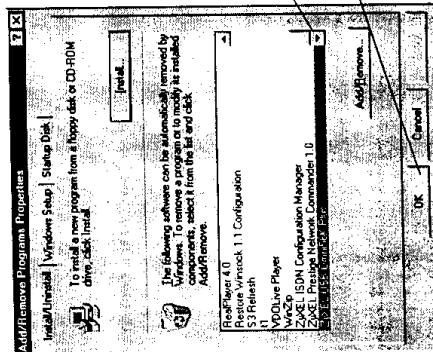
Uninstallation

Follow the steps below to uninstall your USB drivers.

- Step 1.** Turn off your modem.
- Step 2.** From Start select Settings to enter Control Panel. Double-click on the Add/Remove Programs icon as shown below.



Step 3. Now, you will see a screen as below:



Select this item then click on Add/Remove button.

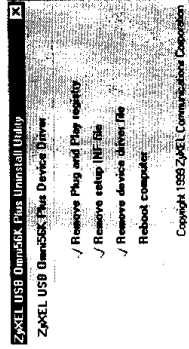
Click OK to continue.

Step 4. Select "ZyXEL USB Omni 56K Plus," click on Add/Remove button, then click on OK.

Step 5. If you are sure to remove ZyXEL USB Omni 56K modem drivers, then click OK.



Step 6. The uninstallation program will start removing the programs regarding USB omni drivers. You will see the screen as below:



You have to reboot your system to complete the uninstallation process. Click Yes to reboot.

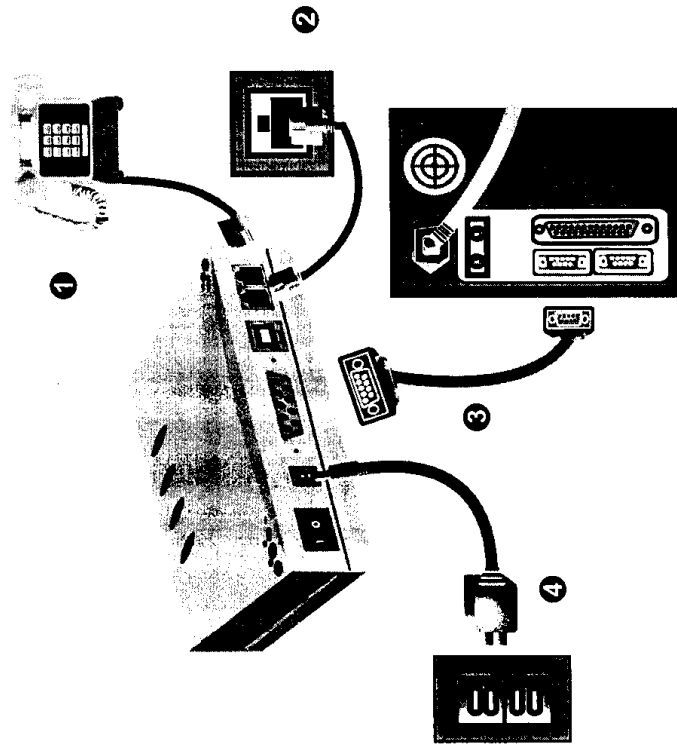


Your uninstallation process is completed after restarting your system.

2. Making Connection via RS-232

Hardware Installation

- 1 Connect your modem to your analog phone or fax.
- 2 Use the included phone line to connect to the phone jack on the wall.
- 3 Plug one end of your RS-232 connectors to your modem and another end to your PC's serial port.
- 4 Use the included power adapter to connect your modem to the outlet.




Note 1: Before using RS-232 to connect your modem to your PC, please find the COM port on the back of your PC to determine the pin type of connector you need.

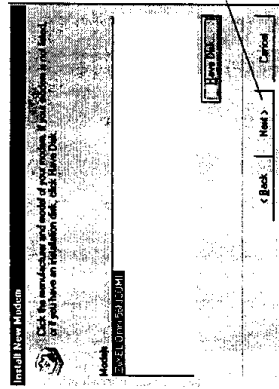
Note 2: Be sure to use the power adapter included with your ZyXEL Omni 56K package as your power supply adapter. If you use the one not appropriate for your Omni 56K, then your new modem could be damaged.

ZyXEL Omni 56K/56K Plus Modem Quick Start Guide

Software Installation

Follow the steps below to install your INF drivers.

- Step 1.** Be sure your modem is powered on
- Step 2.** From **Start** select **Settings** to enter **Control Panel**. Double-click on the **Modems** icon as shown below, then click the **Add** button.

- Step 3.** Select "Don't detect my modem; I will select form a list." Then, click **Next** to continue.
- Step 4.** Click **Have Disk**, then follow the instructions on the following illustrations:
 - a. Insert the CD that comes with your device package.
 - b. Click **Browse**, select your CD-ROM drive to find INF files on the root directory.
 - c. Select the folder of the INF files.
 - d. Then click **OK**.
- Step 5.** Click **OK** to install INF files.
- Step 6.** Then you will see a screen as shown below (taking Omni 56K as an example). Click **Next** to continue.

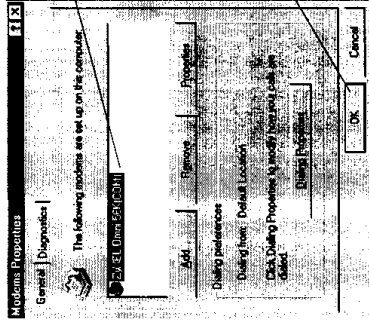


- Step 7.** Select the COM port your new device connected. Then Click **Next**.

ZyXEL Omni 56K/56K Plus Modem Quick Start Guide

Step 8. Please wait for a while to install INF files. At this moment, if see a New Device Installation Wizard for Wave Device of Voice Modem, you can either follow the installation wizard to install this device or click **Cancel** to exit.

Click **Finish** to complete INF files installation. Then you will see a screen as shown below. Now, click **OK** to exit the INF files installation.



The ZyXEL omni modem has been successfully installed in your PC.

Click **OK** to exit the INF files installation.

Note: You also can download updated INF files from ZyXEL's FTP, Web Site or BBS.

Contact ZyXEL

Method	International	North America	Scandinavia
E-Mail for Tech Support	support@zyxel.com.tw support@zyxel.co.at (Europe)	support@zyxel.com	support@zyxel.dk
E-Mail for Sales	sales@zyxel.com.tw	sales@zyxel.com	sales@zyxel.dk
Web Site	WWW.ZYXEL.COM	WWW.ZYXEL.COM	WWW.ZYXEL.DK
Phone	+886-3-5783942 Ext.266	+1-714-632-0882 800-295-4101	+45-3955-0700
Fax	+886-3-5782439	+1-714-632-0858	+45-3955-0707
FTP - Software and ROM upgrade Regular Mail	ftp.zyxel.dk	ftp.zyxel.com	ftp.zyxel.dk
	ZyXEL Communications Corp., 6 Innovation Road II, Science-Based Industrial Park, Hsin-chu, Taiwan 300, R.O.C.	ZyXEL Communications Inc., 1650 Miraloma Avenue, Placentia, CA 92870, U.S.A.	ZyXEL A/S Columbusvej 5, 2860 Soeborg, Copenhagen, Denmark

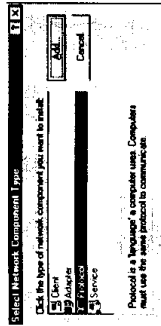
3. Setting up for Internet Connection

For accessing Internet, you must have TCP/IP installed in your computer, configure the TCP/IP, then create a PPP connection.

Installing TCP/IP

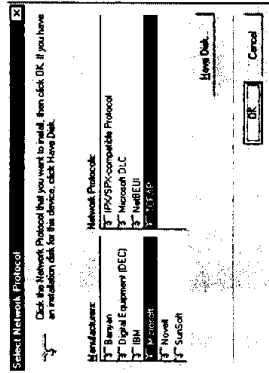
If TCP/IP is already installed in your computer, you may go to the next section of configuring the TCP/IP; if not, follow the steps below:

Step 1. From Start, select Settings/Control Panel, then click on Network.



Step 2. Click Add.

Step 3. Select Protocol, then click on Add.



Step 4. Select Microsoft and TCP/IP, then click on OK.

Configuring TCP/IP

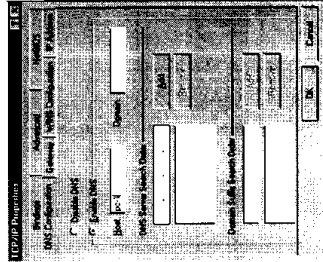
If your TCP/IP is already configured, you may go to the next section to setup PPP connection; if not, follow the steps below:

Step 1. From Start, select Settings/Control Panel, then double-click on Network.

Step 2. Select TCP/IP, then click Properties.

Step 3. Click on IP Address tab. In most cases, you have to select Obtain an IP address automatically. If you have an assigned IP address from your ISP, select Specify an IP address then enter your IP address and subnet mask.

Step 4. Click on DNS Configuration tab, select Enable DNS, enter your Host name, Domain name, and the DNS of your ISP, then click on OK.



Creating a Dial-up Connection

At this point, you only have one step away to access Internet. Follow the instructions below to create a new dial-up connection.

Step 1. Click on My Computer on your desktop, select Dial-up Networking, then click on Make New Connection.

Step 2. Give a name to this Dial-up Connection; for example, Omni 56K. Then select your new modem as the device to connect to Internet, then click Next.

Step 3. Enter your ISP's phone number, then click Next.

Step 4. Click Finish.

Now, you have completed dial-up setup. From now on, you can access Internet by your new device.