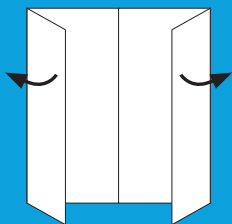


Quick Setup

HP Wireless Portable Speaker





Fold out flaps for illustrations.

على ع الطال ة يوطملا ا ا ج ا ل ط س ب
ة. ح ي ض ر و ت ل ا م و س ر ل ا

Разгънете страниците, за да видите илюстрациите.

Rozkládací záložky pro ilustrace.

Fold flapperne ud for at se illustrationerne

Zum Betrachten der Bilder bitte aufklappen.

Voltige lahti jooniste vaatamiseks.

Abra las solapas para ver las ilustraciones.

Αναδιπλούμενα μέρη για εικόνες.

Déplier les rabats pour voir les illustrations.

Otvorite preklonnice kako biste vidjeli ilustracije.

Aprire i lembi laterali per vedere le illustrazioni.

Atveriet atlokus, lai redzētu ilustrācijas.

Atlenkite atvartus ir pamatsite paveikslėlius.

Az illusztrációkhöz hajtsa ki a füleket.

Uitvouwflappen voor illustraties.

Fold ut flikene for illustrasjoner.

Rozłożyć zakładki w celu odstonięcia ilustracji.

Desdobre as abas para ver as imagens.

Fold out flaps for illustrations.

Desfaceți pliantele pentru ilustrații.

Разверните клапаны для просмотра иллюстраций.

Rozložením záložiek si pozrite obrázky.

Razprite zavihka, da si ogledate slike.

Katso kuvat taittamalla läpät.

Za ilustracije otvorite stranice.

Fäll ut flikarna för illustrationer.

Fold out flaps for illustrations.

Çizimler için kanatları katlayın.

Щоб побачити малюнки розгорніть бокові сторони.

Fold out flaps for illustrations.

Fold out flaps for illustrations.

Fold out flaps for illustrations.

Fold out flaps for illustrations.

Fold out flaps for illustrations.

English.....	2
العربية.....	4
Български.....	6
Čeština.....	8
Dansk.....	10
Deutsch.....	12
Eesti.....	14
Español.....	16
Ελληνικά.....	18
Français.....	20
Hrvatski.....	22
Italiano.....	24
Latviešu.....	26
Lietuvių.....	28
Magyar.....	30
Nederlands.....	32
Norsk.....	34
Polski.....	36
Português.....	38
Português Brasil.....	38
Română.....	40
Русский.....	42
Slovenčina.....	44
Slovenščina.....	46
Suomi.....	48
Srpski.....	50
Svenska.....	52
Thai.....	38
Türkçe.....	54
Українська.....	56
Japanese.....	38
Korean.....	38
Simplified Chinese.....	38
Traditional Chinese.....	38
Hebrew.....	58

English

Listen to high-quality audio from your Bluetooth compatible device on your wireless speaker.

- 1 Power On/Off LED indicator
- 2 Volume decrease button
- 3 Volume increase button
- 4 Mute button
- 5 Bluetooth pairing button
- 6 Battery light
 - a. Amber light is on when charging
 - b. Green light is on when battery is full
 - c. Amber light is flashing when battery is low
- 7 Bluetooth light
 - a. Slow flashing light indicates the Bluetooth devices is searching for a paired device
 - b. Fast flashing light indicates the Bluetooth devices is in pairing mode
 - c. Constant light indicates the Bluetooth device is connected
- 8 Power switch
- 9 AUX-in jack
- 10 DC-in jack
- 11 Near field communication (NFC) Sensor

Troubleshooting

Problem: Bluetooth pairing and connection was unsuccessful.

Solution: Add the Bluetooth device manually. Click **Start > Devices and Printers > Add a device**. Select the HP Bluetooth Speaker from the list.


Problem: No sound from the speaker.


Solution: Verify that the system volume is turned on at the system and turned to a high volume level. Make sure the audio playback switch is set to Bluetooth Hands-free Speakers: Click **Start > Control Panel > Hardware and Sound > Manage audio devices**.

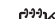
You may also need to enable the listen to music option within Bluetooth services after you have paired the device. Click **Devices and Printers**, right click on the HP wireless speaker, click **Properties > Services**, and then select **Listen to music**.

Problem: The NFC feature is not working.

Solution: The NFC sensor establishes radio communication between the pairing device and the speaker by touching them together on the NFC sensor. Verify that your device supports NFC by activating its NFC feature. Then, touch the NFC area on the speaker with your device. The speaker will connect automatically if the device is compatible with the NFC feature. If your device does not support NFC, you must use the Bluetooth pairing process.

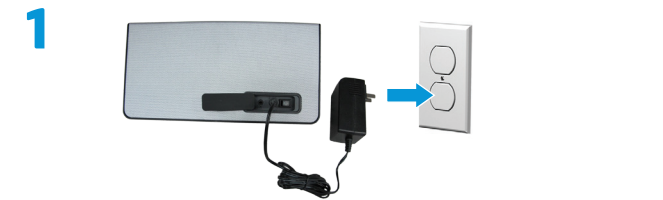
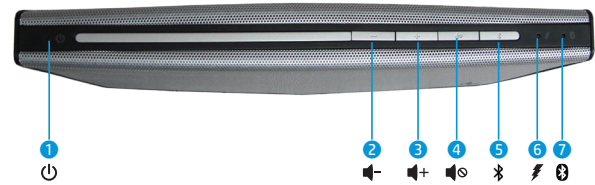
- 1 Connect the AC adapter to the wall outlet.
- 2 Enable Bluetooth on your device. To receive the NFC signal, place your NFC device within the NFC sensor area.
- 3 Turn on the speaker.
- 4 Press any button on the top panel to activate the buttons.
- 5 Press the Bluetooth pairing button . The Bluetooth light will blink rapidly. The speaker will play two beeps when the speaker is paired correctly.
- 6 Verify that your notebook, tablet, or smart phone pairs with the speaker. If the system requests a pass code during the pairing process, enter 0000.

 **Note:** The speaker will become idle if pairing is not successful within 2.5 minutes. You must repeat the pairing process if this happens.

 **Note:** You may also use an optional audio cable to connect the speaker to your notebook, tablet, or smart phone.

Regulatory and safety information

For regulatory and safety notices, refer to the Product Notices included with your product.



Copyright © 2013 Hewlett-Packard Development Company, L.P.

Bluetooth is a trademark owned by its proprietor and used by
Hewlett-Packard Company under license.

The information contained herein is subject to change without notice.

First Edition: June 2013



723593-B21