

ABBYY® FineReader 10
Corporate Edition
System Administrator's Guide

Information in this document is subject to change without notice and does not bear any commitment on the part of ABBYY. The software described in this document is supplied under a license agreement. The software may only be used or copied in strict accordance with the terms of the agreement. It is a breach of the "On legal protection of software and databases" law of the Russian Federation and of international law to copy the software onto any medium unless specifically allowed in the license agreement or nondisclosure agreements.

No part of this document may be reproduced or transmitted in any form or by any means, electronic or other, for any purpose, without the express written permission of ABBYY.

© 2009 ABBYY. All rights reserved.

ABBYY, the ABBYY logo, ABBYY FineReader, ADRT are either registered trademarks or trademarks of ABBYY Software Ltd.

© 1984-2008 Adobe Systems Incorporated and its licensors. All rights reserved.

Adobe® PDF Library is licensed from Adobe Systems Incorporated.

Adobe, Acrobat, the Adobe logo, the Acrobat logo, the Adobe PDF logo and Adobe PDF Library are either registered trademarks or trademarks of Adobe Systems Incorporated in the United States and/or other countries.

© 1996-2007 LizardTech, Inc. All rights reserved. DjVu is protected by U.S. Patent No. 6.058.214. Foreign Patents Pending.

Fonts Newton, Pragmatica, Courier © 2001 ParaType, Inc.

Font OCR-v-GOST © 2003 ParaType, Inc.

© 2007 Microsoft Corporation. All rights reserved.

Microsoft, Outlook, Excel, PowerPoint, Visio, Windows Vista, Windows are either registered trademarks or trademarks of Microsoft Corporation in the United States and/or other countries.

© 1991-2008 Unicode, Inc. All rights reserved.

OpenOffice.org is property of Sun Microsystems, Inc.

JasPer License Version 2.0:

© 2001-2006 Michael David Adams

© 1999-2000 Image Power, Inc.

© 1999-2000 The University of British Columbia

All other trademarks are the property of their respective owners.

Table of Contents

Deploying ABBYY FineReader 10 in a LAN.....	4
Deploying ABBYY FineReader 10.....	4
Step 1. Administrative installation	6
Installing the License Server and the License Manager	6
Creating an administrative installation point.....	7
Step 2. Managing Licenses	8
ABBYY FineReader 10 License Manager	8
License Types and License Statuses.....	9
Adding a License to the License Manager	10
Working with Licenses (Reserving and Releasing Licenses).....	11
License Pools	12
Working with License Pools (Reserving and Releasing Pools)	12
Providing Licenses to Workstations when ABBYY FineReader 10 Is Installed and Launched	13
Distributing Licenses to Workstations	14
Step 3. Installing ABBYY FineReader 10 on Workstations.....	16
Interactive installation	16
Command line installation.....	16
Using Active Directory	17
Using Microsoft Systems Management Server (SMS).....	22
Using Task Scheduler.....	24
Frequently Asked Questions	26
How can I install ABBYY FineReader 10 on a terminal server?	26
How can I change the network connection settings?	26
How can I repair ABBYY FineReader 10 on the workstations?	27
How can I rename the computer hosting the License Server or move the License Server to another computer?	27
Group Work in a LAN.....	28
Processing the same ABBYY FineReader document on several computers	28
Using the same user languages and dictionaries on several computers.....	28
Technical Support	29

Deploying ABBYY FineReader 10 in a LAN

General

ABBYY FineReader 10 can be installed and used on a local area network.

The automated installation methods give you speed and flexibility when installing ABBYY FineReader 10 Corporate Edition on a local area network, as you do not have to install the program manually on each individual workstation.

Deploying ABBYY FineReader 10

ABBYY FineReader can be deployed from any computer running under Microsoft® Windows® XP (or later).

The deployment process comprises the following steps:

1. Administrative installation

- a. Installing ABBYY FineReader 10 CE License Server and ABBYY FineReader 10 CE License Manager

For detailed instructions, see [Installing the License Server and the License Manager](#).

Note: The computer on which ABBYY FineReader 10 License Manager is installed becomes a License Administrator Station.

- b. Creating an administrative installation point

An administrative installation point is created by providing a server name and simply copying the setup package from the CD-ROM into a folder on the server.

For detailed instructions, see [Creating an administrative installation point](#).

Note: You can change the network connection settings used by the License Server, the License Manager, and the workstations. For details, see [How can I change the network connection settings?](#)

2. Managing the licenses

A special ABBYY FineReader 10 License Manager application is used for managing licenses.

For the licenses to be correctly distributed among the workstations when installing ABBYY FineReader 10, you must give certain workstations priority in obtaining certain licenses. For this purpose, reserve licenses and pools of licenses for certain workstations.

A *pool of licenses* is a set of licenses or serial numbers of equal standing. License pools make working with licenses easier.

For example, instead of reserving each license separately, you can add it into a pool and then reserve the pool for certain workstations (see [License Pools](#)).

For details, see [Step 2. Managing Licenses](#).

3. Installing ABBYY FineReader on workstations using one of the following methods:

- manually in interactive mode
- via the command line
- Active Directory
- Microsoft Systems Management Server (SMS),
- Task Scheduler

For detailed instructions, see [Step 3. Installing ABBYY FineReader 10 on Workstations](#).

Note:

- The server (\\MyLicenseServer) on which the License Server is installed must run under Microsoft Windows XP, Microsoft Windows Server 2003, Microsoft Windows Vista, Microsoft Windows 7, or Microsoft Windows Server 2008.
- The server (\\MyFileServer) on which the administrative installation point is created must be a file server running under any operating system that supports long file names.
- The administrative installation point and the License Server can be located either on the same or on different computers.

Important!

1. Do not place the License Server into the same folder with the administrative installation point.
2. Do not install several different versions of ABBYY FineReader on the same workstation.

Administrative installation folder requirements

1. 750 MB free hard-disk space to create an administrative installation point
2. Read access to the administrative installation folder (e.g. \\MyFileServer\Programs Distributions\ABBYY FineReader 10) for all users on whose computers ABBYY FineReader is to be installed.
3. When using Active Directory® to deploy ABBYY FineReader 10, the Domain Computers accounts must have read permissions for the administrative installation folder.

License Server requirements

1. 100 MB free hard-disk space to create license files and accounts
2. The number of connections supported by the operating system of the License Server must be at least equal to the total number of potential users of the program (only for Concurrent licenses).
Microsoft Windows XP, for example, allows no more than 10 simultaneous connections, allowing to run ABBYY FineReader only on 10 workstations at a time.

License Administrator Station requirements

1. PC running under Microsoft Windows XP or later (to work with localized interfaces, the operating system must support the corresponding language)
2. 256 MB RAM
3. 100 MB free hard-disk space

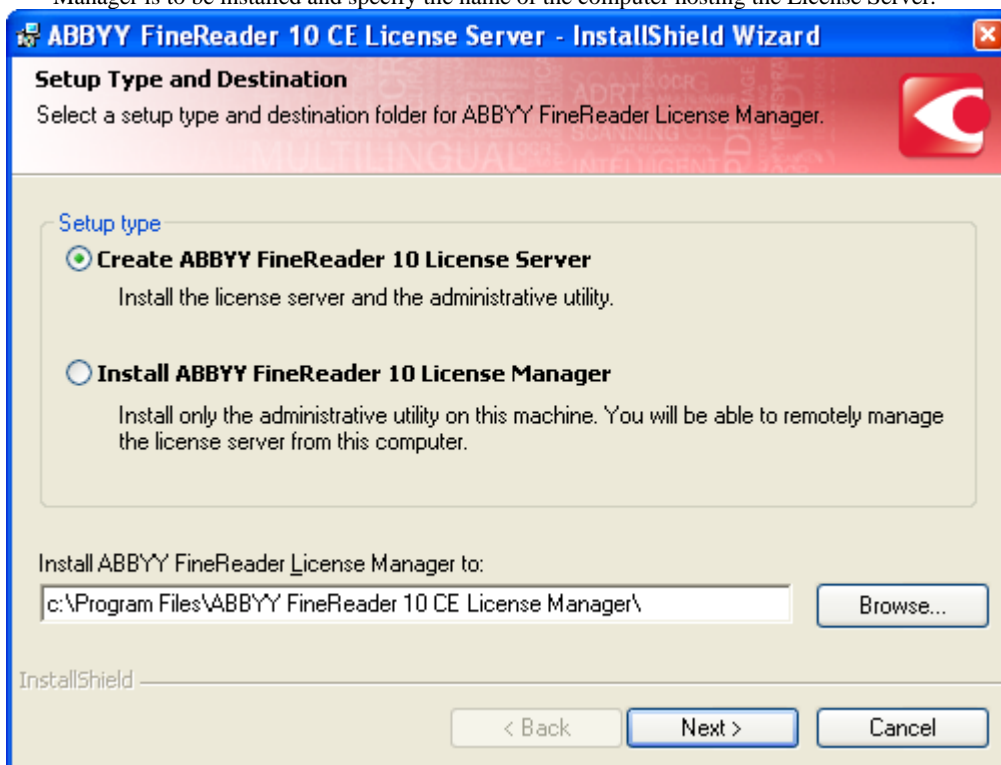
Workstation requirements

1. PC with 1 GHz or greater Intel® Core™2/Pentium®/Celeron®/Xeon™, AMD K6/Turion™/Athlon™/Duron™/Sempron™ or compatible processor
2. Operating System: Microsoft Windows 7, Microsoft Windows Server 2008, Microsoft Windows Vista, Microsoft Windows Server 2003, Windows XP, (to work with localized interfaces, the operating system must support the corresponding language)
3. 512 RAM; in multiprocessor systems, an additional 512 MB RAM is required for each additional processor
4. 700 MB for installation of all program components; 512 MB for program operation
5. TWAIN- or WIA-compatible scanner, digital camera or fax modem
6. Video card and monitor supporting min. resolution of 1024*768
7. Keyboard and mouse or other pointing device

Step 1. Administrative installation

Installing the License Server and the License Manager

1. Place the setup disk into the CD-ROM drive. The setup program will start automatically.
Note: If the setup program does not start automatically, run the file **License Server\Setup.exe** from the ABBYY FineReader 10 CD-ROM.
2. Select **Deploy ABBYY FineReader in LAN>Install ABBYY FineReader License Server**.
3. Follow the instructions of the setup program.
During setup, you can:
 - Install the License Server and install the ABBYY FineReader License Manager utility. The License Server and the License Manager will be installed on the computer from which you are performing the administrative installation. You can specify a folder into which the License Manager is to be installed.
 - Install only the ABBYY FineReader 10 License Manager. You will need to specify a folder into which the License Manager is to be installed and specify the name of the computer hosting the License Server.

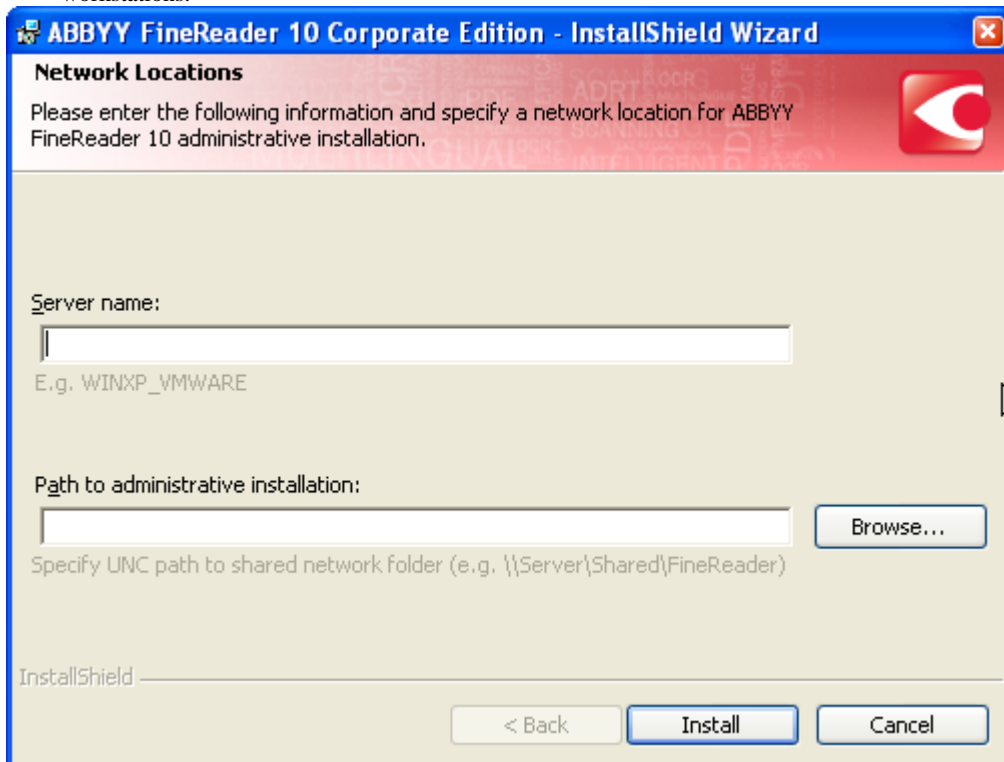


Note:

- If several users will be managing the ABBYY FineReader 10 licenses, they must have the License Manager utility installed on their computers.
- Each user must be a member of one of the two local groups on the server:
 1. ABBYY Licensing Administrators
 2. BUILTIN\AdministratorsYou can disable user authorization in the file
`%programfiles%\Common Files\ABBYY\FineReader\10.00\Licensing\CE\NetworkLicenseServer.ini`
This file is located on the computer where the License Server has been installed. Add the following parameter to this file:
[Licensing]
EnableManagerAuthorization = false
Important! For the changes to take effect, you must restart ABBYY FineReader 10 CE Licensing Service.

Creating an administrative installation point

1. Place the setup disk into the CD-ROM drive. The setup program will start automatically.
Note: If the setup program does not start automatically, run the **AdminSetup.exe** file from the ABBYY FineReader 10 CD-ROM.
2. Select Deploy ABBYY FineReader in LAN>Create administrative installation point.
3. Follow the instructions of the setup program.
When the setup program prompts you, specify the following:
 - The name of the computer where the License Server is to be installed
 - The path to the administrative installation folder
Important! Avoid moving the administrative installation folder after ABBYY FineReader is installed on the workstations.



Step 2. Managing Licenses

Configure the licenses using ABBYY FineReader 10 License Manager:

- 1) **Add the licenses to ABBYY FineReader 10 License Manager.**
For details, see [Adding a License to the License Manager](#).
- 2) **Create license pools and add the licenses you need into the pools.**
For details, see [Working with Licenses \(Reserving and Releasing Licenses\)](#).
A license pool is a collection of licenses (serial numbers) of equal standing. License pools make working with licenses easier. For example, instead of reserving each license separately, you can add it into a pool and then reserve the pool for certain workstations. For details, see [License Pools](#).
- 3) **Reserve the pools and licenses for the workstations.**
For details see [Working with License Pools \(Reserving and Releasing Pools\)](#).

By reserving pools and licenses for certain workstations, you give these stations priority in obtaining these licenses.

Per-seat licenses are distributed among workstations and bound to the server (for the purpose of obtaining concurrent licenses) when ABBYY FineReader 10 is installed. This distribution and binding is determined by which pools and licenses are reserved for which workstations at the moment of installation. For details, see [Obtaining licenses when installing ABBYY FineReader 10](#) and [License Types and License Statuses](#).

Important!

Reserve licenses and pools before you install ABBYY FineReader 10 on the workstations. To bind or unbind a workstation after ABBYY FineReader 10 has been installed on it, you will need to remove the program from the workstation. To move a per-seat license from one workstation to another after ABBYY FineReader 10 has been installed, you will need to deactivate the license. The number of allowed deactivations is limited. For details, see [Deactivating a per-seat license](#).

ABBYY FineReader 10 License Manager

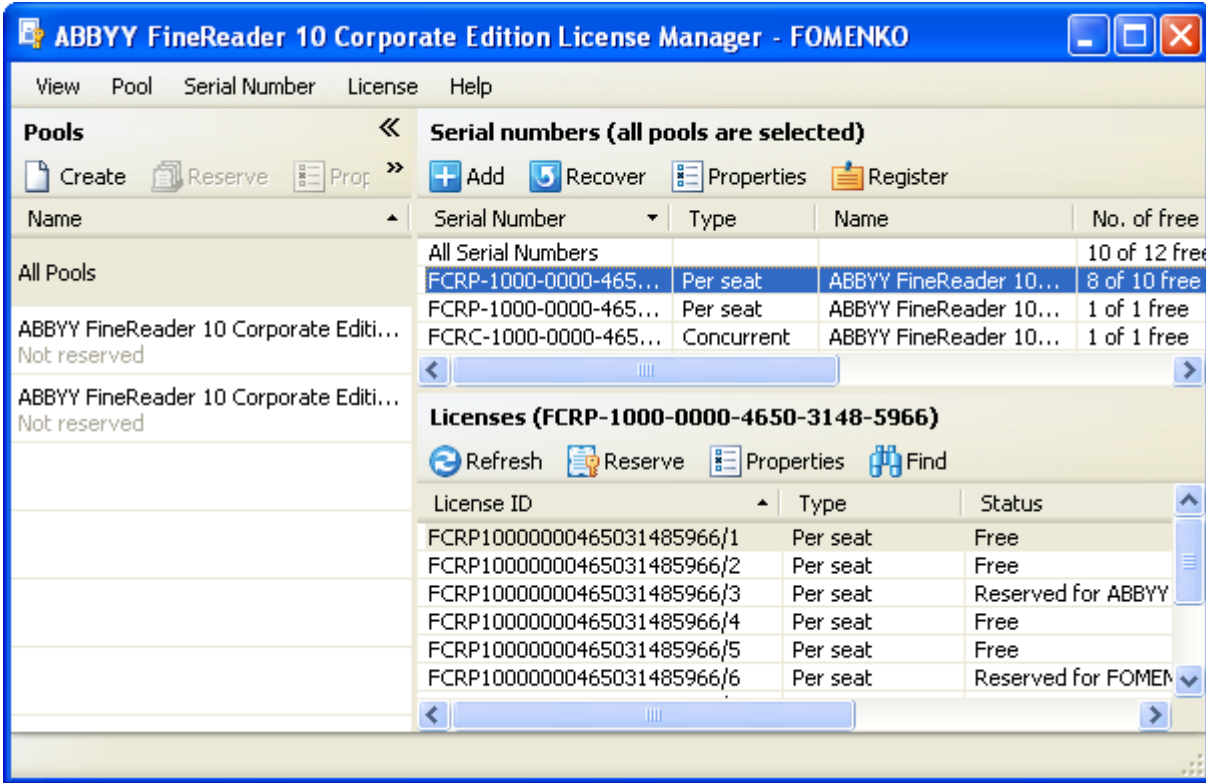
ABBYY FineReader 10 License Manager is an application for managing licenses, which is installed on the License Administrator Station when deploying ABBYY FineReader 10 in the LAN (see [Installing the License Server and the License Manager](#)).

ABBYY FineReader 10 License Manager allows you to:

- Add and activate licenses
- Reserve licenses for workstations
- Use pools for managing licenses more efficiently
- Obtain information about license properties
- Update information about license statuses

Launching the ABBYY FineReader 10 License Manager

From **Start>Programs>ABBYY FineReader 10 CE Administrative Tools**, select **ABBYY FineReader License Manager**.



License Types and License Statuses

There are two types of licenses: concurrent licenses and per-seat licenses.

Concurrent licenses

Concurrent licenses (distributed access licenses) are not bound to any particular workstation. When ABBYY FineReader 10 is launched, it contacts ABBYY FineReader 10 License Server for concurrent licenses. If there are suitable concurrent licenses available, ABBYY FineReader 10 will “take” them (for more information, see [Obtaining concurrent licenses when launching ABBYY FineReader 10](#)). When ABBYY FineReader 10 is closed on the workstation, the licenses are released.

ABBYY FineReader 10 will contact ABBYY FineReader 10 License Server only if was bound to the server when installing ABBYY FineReader 10. For details, see [Obtaining licenses when installing ABBYY FineReader 10](#).

Note: If there are no free licenses on ABBYY FineReader 10 License Server, a corresponding message will be displayed.

Statuses of concurrent licenses

- **Free**
The license is not being used by any workstation.
- **Reserved for**
The license can only be used by this workstation, but it is not currently in use by this workstation.
- **Running on**
The license is being used by this workstation.

Note: The total number of ABBYY FineReader 10 copies running in the LAN at simultaneously may not exceed the number of concurrent licenses. The number of installed ABBYY FineReader 10 copies may exceed the number of concurrent licenses.

Note: When ABBYY FineReader 10 is running, it stays connected to the server. Please avoid installing concurrent licenses on workstations with unstable connection to the server or on portable workstations (laptop computers).

Per-seat licenses

Per-seat licenses are bound to workstations via the activation process. ABBYY FineReader 10 on the bound workstations will not contact the server for licenses and will run even if there is no connection with the server.

Per-seat licenses are distributed when ABBYY FineReader 10 is installed. Distribution of per-seat licenses is determined by which pools and licenses are reserved for which workstations at the moment of installation. For details, see [Obtaining licenses when installing ABBYY FineReader 10](#).

Statues of per-seat licenses

- **Free**
The license is not bound to any workstation and can be provided to the first workstation to contact the server.
- **Reserved for**
The license can only be installed on this workstation but has not yet been installed on it.
- **Installed on**
When installing ABBYY FineReader 10, the license was provided to this workstation but has not yet been activated on it.
- **Activated on**
The license has been installed on this workstation and activated on it. ABBYY FineReader 10 will run on this workstation even if it is not connected to the server.

Note: The total number of ABBYY FineReader 10 copies installed in the LAN may not exceed the number of per-seat licenses.

Activating per-seat licenses on workstations

Per-seat licenses are bound to workstations via the activation process when installing ABBYY FineReader 10 on each workstation.

Note: When activating a license on a workstation, the system service **ABBYY FineReader 10 Licensing Service** running on the server, contacts the address **registration2.abbyy.com** at port 80. If your company's security policy prohibits this, you will need to activate ABBYY FineReader 10 on the workstations manually at first launch.

Note: If ABBYY FineReader 10 License Server was not connected to the Internet when you installed ABBYY FineReader 10 on a workstation, when you first run ABBYY FineReader 10 on the workstation, the program will prompt you to activate a per-seat license (the workstation must be connected to the Internet).

Adding a License to the License Manager

To add a license (sever licenses):

1. Launch ABBYY FineReader 10 License Manager.
2. Click **Add...**
3. Follow the instructions of the Activation Wizard.

Note: The license(s) will be added only if the activation process complete successfully.

Available activation methods:

- **Via the Internet (fast, recommended)**
Activation is carried out automatically and takes very little time. This activation method requires an active Internet connection.
- **By e-mail (fast)**
The Activation Wizard will create an activation e-mail message. Send this message to the address specified. Do not alter the e-mail message. In reply, you will receive an e-mail message with an activation file attached. Save this file to the hard disk. In the Activation Wizard window, click **Next>**, then click **Browse...** and specify the path to the activation file.
- **By phone (slow)**
In the Activation Wizard, select your country. The wizard will prompt you to call the nearest ABBYY office or partner. Read out the serial number and Product ID displayed in the Activation Wizard window to a technical support specialist. In reply, the specialist will read out your activation code. Click **Next>** and in the window that appears, type the activation code.
Note: An activation code contains 78 digits and may take some time to read out over the phone.
- **On the website (fast)**
The Activation Wizard will display the address of the activation website and the serial number and Product ID of your copy of ABBYY FineReader 10 (these can be copied to the Clipboard). Direct your browser to the specified website and enter your serial number and Product ID in the corresponding fields. You will receive an activation file. Save this file to the hard disk. In the Activation Wizard window, click **Next>**, then click **Browse...** and specify the path to the activation file.
- **By e-mail from another computer (slow)**
The Activation Wizard will display the text of the activation message and the e-mail address to which it should be sent. On a computer on which ABBYY FineReader 10 is not installed, create an e-mail message and copy the text from the Activation Wizard into this message. Then send the e-mail message to the specified address. In reply, you will receive an e-mail message with an activation file attached. Save this file to the hard disk of the computer on which ABBYY FineReader 10 is installed. In the Activation Wizard window, click **Next>** and specify the path to the activation file. Click **Next>**.

Note: ABBYY is concerned about software piracy and takes measures to protect its intellectual property rights. Software piracy is detrimental to software manufacturers and to end users alike. When buying a legal software copy, users can be sure that they obtain a quality product without any changes or alterations introduced by a third party. Illegal products are never safe.

If the License Agreement allows you to install and use your copy of the software only on one personal computer, any additional installations of the same copy on other PCs will constitute a breach of the License Agreement as well as of the copyright law of the Russian Federation and international copyright law. The activation technology controls the number of copies and prevents the installation of one licensed copy on an unlimited number of workstations. At the same time, the number of installations and activations on one and the same PC is not limited in any way whatsoever (this may be necessary, for example, if you change your operating system or make major changes to your hardware configuration).

You will not be able to use ABBYY FineReader 10 unless you activate your license.

Activating multiple serial numbers

You can activate several serial numbers at a time:

1. Launch ABBYY FineReader 10 License Manager.
2. Click **Add...**
3. Click **Multiple serial numbers activation** and then click **Next**.
4. Follow the instructions of the Activation Wizard.

Important! You cannot activate multiple serial numbers over the Web-site or by phone.

If you activate multiple serial numbers by e-mail, you will receive several license files. To activate all the received serial numbers at a time:

1. Launch ABBYY FineReader 10 License Manager.
2. Click **Add...**
3. Click **I already have a license file**.
4. Click **I have multiple license files**, add the files, and then click **Next**.
5. Follow the instructions of the Activation Wizard.

Working with Licenses (Reserving and Releasing Licenses)

Reserving a license

You can reserve a license for a workstation. A reserved license can only be used on the workstation for which it has been reserved.

To reserve a license:

1. Launch ABBYY FineReader 10 License Manager.
2. Select the desired license and click **Reserve**.
3. In the dialog box that opens, type the name of the workstation for which you wish to reserve the license. In the License Manager window, the status of the selected license will change to **Reserved for**.

Undoing “Reserve”

1. Launch ABBYY FineReader 10 License Manager.
2. Select the desired license and click **Undo Reserve**.

Note: Before undoing “Reserve” for a per-seat license, you must deactivate and uninstall the license (applies only to installed and activated licenses).

Viewing license properties

1. Launch ABBYY FineReader 10 License Manager.
2. Select the desired license and click **Properties**.

A **License Properties** dialog box will open, listing the properties of the selected license.

Deactivating a per-seat license

If a malfunction occurs on a workstation on which a per-seat license has been activated, you can return the license to the server by first deactivating it on the workstation. Only after deactivating the license you will be able to install and activate it on a different workstation.

To deactivate a license:

1. Launch ABBYY FineReader 10 License Manager.
2. Select the desired license and click **Deactivate**.

3. Follow the instructions of the **Deactivation Wizard**.

Note: When deactivating a license by e-mail, you will receive a license status recovery file in reply. To complete the deactivation process, you must recover the status of the license. For detailed instructions, see [Recovering the status of a per-seat license](#).

Once the deactivation process completes, the status of the license will change to **Free** or **Reserved for**.

Important!

The number of allowed deactivations is limited.

Recovering the status of a per-seat license

If the computer hosting the License Server has been renamed or the License Server has been moved to a different computer, you may recover the statuses of the licenses. The statuses of all the licenses related to the same serial number will be recovered simultaneously. Once the license statuses have been recovered, the corresponding activation information in the License Manager will be updated.

1. Launch ABBYY FineReader 10 License Manager.
2. Select the desired license and click **Recover Status**.
3. Follow the instructions of the License Status Recovery Wizard.

The following license status recovery methods are available:

— **Via the Internet**

Status recovery is carried out automatically and usually takes very little time. This method requires an active Internet connection.

— **By e-mail**

The program will automatically generate an e-mail message containing the technical data required for license status recovery and prompt you to send this e-mail message to ABBYY. You will receive an auto reply with an attached file that contains license status recovery data. Save this file to your hard disk and provide the path to the file in the corresponding field of the License Status Recovery Wizard.

Note: Do not alter the body and subject of the e-mail message to ensure a prompt reply from the mail robot.

— **By e-mail from another computer**

If your computer is not currently connected to the Internet, the License Status Recovery Wizard will help you create and save a file containing the required technical data. You can then send this file to ABBYY from any other computer that is connected to the Internet. You will receive an auto reply with an attached file that contains license status recovery data. Save this file to your hard disk and provide the path to the file in the corresponding field of the License Status Recovery Wizard.

Once the license status recovery process completes, the statuses of the activated licenses will be marked with asterisks (*). The name of the workstations on which the licenses have been activated will not be displayed.

4. Reinstall ABBYY FineReader 10 on the workstations.

The statuses of the activated licenses will change to **Activated on <name of workstation>**.

Note: You can find a license by workstation name:

1. In ABBYY FineReader 10 License Manager, click **Find**.
2. Type the name of the workstation and click **OK**.

License Pools

A pool is a collection of licenses (or serial numbers) of the same standing.

There are two types of pools: concurrent pools, which may contain only concurrent licenses, and per-seat pools, which may contain only per-seat licenses. The type of a pool can only be defined upon creation.

Each license belongs to a pool. Pools are created and managed by the administrator. Additionally, a pool is created for each added license. Unlike separate licenses, pools can be reserved for more than one workstation.

Working with License Pools (Reserving and Releasing Pools)

Creating a pool

1. In ABBYY FineReader 10 License Manager, select **Pool>Create...**
2. In the dialog box that opens, specify a pool name and pool type (per seat or concurrent). Click **OK**.

Note: You cannot change the type of a pool once it has been created.

Note: When you add and activate a license on the server, a pool for this license is created automatically.

Adding a license to a pool

1. In ABBYY FineReader 10 License Manager, right-click on the desired serial number and select **Move to Pool...**
2. In the dialog box that opens, select the destination pool and click **OK**.

Tip: Alternatively, you can drag the serial number to the desired pool holding down the left mouse button.

Note: Per-seat licenses can only be added to per-seat pools and concurrent licenses can only be added to concurrent pools.

Reserving a pool

1. In ABBYY FineReader 10 License Manager, select the desired pool and click **Reserve**.
2. In the dialog box that opens, specify the names of the workstations and click **OK**. You can either type the names of the workstations manually (click **Enter...**) or via a system dialog box (click **Select...**).

Providing Licenses to Workstations when ABBYY FineReader 10 Is Installed and Launched

Obtaining licenses when installing ABBYY FineReader 10

- When you install ABBYY FineReader 10, the workstations will get certain per-seat licenses depending on which licenses and pools have been reserved for which workstations (see [How a workstation obtains a license](#)).
- Additionally, when you install ABBYY FineReader 10, workstations may be “bound” to ABBYY FineReader 10 License Server and subsequently contact the server for concurrent licenses each time ABBYY FineReader 10 is run. Whether a workstation is bound to the server when installing ABBYY FineReader 10, depends on how the administrator has reserved the licenses and pools (see [How a workstation obtains a license](#)).

For more information about obtaining concurrent licenses when ABBYY FineReader 10 is launched see [Obtaining concurrent licenses when launching ABBYY FineReader 10](#).

Note: To “unbind” a workstation from the server so that no longer contacts the server for a concurrent license each time ABBYY FineReader 10 is run:

1. Make the appropriate changes to the reserved licenses and pools.
2. Reinstall ABBYY FineReader 10 on the workstations.

How a workstation obtains a license

1. One license is provided from each per-seat pool reserved for the given workstation or containing a license reserved for the given workstation (if any).

Note: A workstation accessing a per-seat pool will get the license which has the highest priority (see [Priority of licenses in a per-seat pool](#)). If a workstation fails to obtain a license from a pool, an error will occur and the process will stop.

2. If there is at least one concurrent pool reserved for the given workstation or containing a license reserved for the given workstation, the workstation will be “bound” to the server (so that it can obtain concurrent licenses from it).

Note: To exclude the possibility of reserving more licenses than available, pay attention to the number of licenses reserved for each workstation. For example, if a workstation gets two per-seat pools reserved, it will get two licenses - one from each pool.

If at Step 1 at least one pool is found or if Step 2 completes successfully, the process stops (no further steps are performed).

3. The program checks if there is at least one free concurrent pool (not reserved for any workstation) which contains licenses not reserved for this workstation and if at least one of them is free. If there is a free license, the workstation will be “bound” to the server (so that it can obtain concurrent licenses from it) and the process will stop.
4. If at Step 3 no suitable concurrent pool is found, the server will provide one license from each free per-seat pool (not reserved for any workstation) which contains licenses not reserved for this workstation at least one of which is free.

Note: A workstation accessing a per-seat pool will get the license which has the highest priority (see [Priority of licenses in a per-seat pool](#)).

5. If at Step 4 no suitable per-seat pool is found, the workstation will be bound to the server and upon the first launch of ABBYY FineReader 10 on this workstation, the procedure of obtaining a license will repeat.

Priority of licenses in a per-seat pool

A workstation accessing a per-seat pool will obtain the license with the highest priority.

Per-seat licenses listed in order of priority (from highest to lowest) for the given workstation:

1. The license activated on this workstation.
2. The license installed on this workstation.
3. A license reserved for this workstation.
4. Free license (not reserved for any workstation).

Obtaining concurrent licenses when launching ABBYY FineReader 10

A concurrent license is provided when ABBYY FineReader 10 is launched on a workstation and only if the workstation is bound to the server (i.e. steps 2 and 3 have been successful). A workstation accessing a concurrent pool will obtain the license with the highest priority (see [Priority of licenses in a concurrent pool](#)).

How concurrent licenses are obtained by a workstation

1. One license is provided from each concurrent pool reserved for the given workstation or containing a license reserved for the given workstation (if any).
2. If at Step 1 no suitable concurrent pool is found, the server will provide one license from each free concurrent pool (not reserved for any workstation) which contains only licenses not reserved for this workstation (if any).

Priority of licenses in a concurrent pool

A workstation accessing a concurrent pool will obtain the license with the highest priority.

Concurrent licenses listed in order of priority (from highest to lowest) for the given workstation:

1. The license reserved for this workstation.
2. Free license (not reserved for any workstation).

Distributing Licenses to Workstations

Distributing two different sets of per-seat licenses to two groups of users

Suppose you have two sets of per-seat licenses (a set of Type A licenses and a set of Type B licenses) and two groups of workstations (Group 1 and Group 2) and need to install on the Group 1 workstations only the Type A licenses and on the Group 2 workstations only the Type B licenses.

1. Create an administrative installation point (see [Step 1. Administrative installation](#) for details).
2. Add the Type A and B license to ABBYY FineReader 10 License Manager (see [Step 2. Managing Licenses](#) for details).
3. Create two per-seat pools—Pool A and Pool B. Add the Type A licenses to Pool A and add the Type B licenses to Pool B.
4. Reserve Pool A for the Group 1 workstations and reserve the Pool B for the Group 2 workstations.
5. Install ABBYY FineReader 10 on the Group 1 and Group 2 workstations (see [Step 3. Installing ABBYY FineReader 10 on Workstations](#) for details).

During the installation, each Group 1 workstation will get a Type A license and each Group 2 workstation will get a Type B license (see [Obtaining licenses when installing ABBYY FineReader 10](#) for details).

Distributing concurrent and per-seat licenses between desktop and portable (laptop) workstations

Suppose you have a set of per-seat licenses and a set of concurrent licenses and you need to distribute these licenses among desktop and portable (laptop) workstations.

The portable workstations must not be bound to the server, because concurrent licenses require a stable connection with the server.

We recommend installing per-seat licenses on portable workstations. To achieve this, prior to installing ABBYY FineReader 10 on the workstations, create per-seat pools and reserve them for the portable workstations.

1. Create an administrative installation point (see [Step 1. Administrative installation](#) for details).
2. Add the concurrent and per-seat licenses to ABBYY FineReader 10 License Manager (see [Adding a License to the License Manager](#) for details).
3. Create two pools — a per-seat pool and a concurrent pool— and add the per-seat licenses to the per-seat pool and the concurrent licenses to the concurrent pool.
4. Reserve the per-seat pool for the portable workstations and the concurrent pool for the desktop workstations.
5. Install ABBYY FineReader 10 on the workstations (see [Step 3. Installing ABBYY FineReader 10 on Workstations](#) for details).

Below it is explained how the licenses will be distributed among the workstations during the installation (for details, see [Obtaining licenses when installing ABBYY FineReader 10](#)).

Step 1. The per-seat licenses will be installed on the portable workstations for which they have been reserved. The per-seat licenses will not be installed on the desktop workstations.

Step 2. The portable workstations will not be bound to ABBYY FineReader 10 License Server, as the concurrent pool has been reserved for the desktop workstations. Therefore, when ABBYY FineReader 10 is launched on a portable workstation, it will not contact the server for a concurrent license.

The desktop workstations will be bound to ABBYY FineReader 10 License Server, because the concurrent pool has been reserved for them. Each time ABBYY FineReader 10 is launched on a desktop workstation, it will contact the server for a concurrent license and obtain a suitable license (for details, see [Obtaining concurrent licenses when launching ABBYY FineReader 10](#)). This is the final step in obtaining the licenses, because either of the two steps has completed successfully for each workstation.

Note: If you need to install per-seat licenses on laptop workstations and concurrent licenses on desktop workstations and if you have two pools (a per-seat pool and a concurrent pool), you have to reserve only one pool of the two for the licenses to be distributed correctly (see [Obtaining licenses when installing ABBYY FineReader 10](#)). If you have more pools and user groups, we recommend reserving a pool for each group.

Step 3. Installing ABBYY FineReader 10 on Workstations

Important! Before installing ABBYY FineReader 10 on the workstations, be sure to complete Steps 1 and 2 (see [Step 1. Administrative installation](#), [Step 2. Managing Licenses](#)).

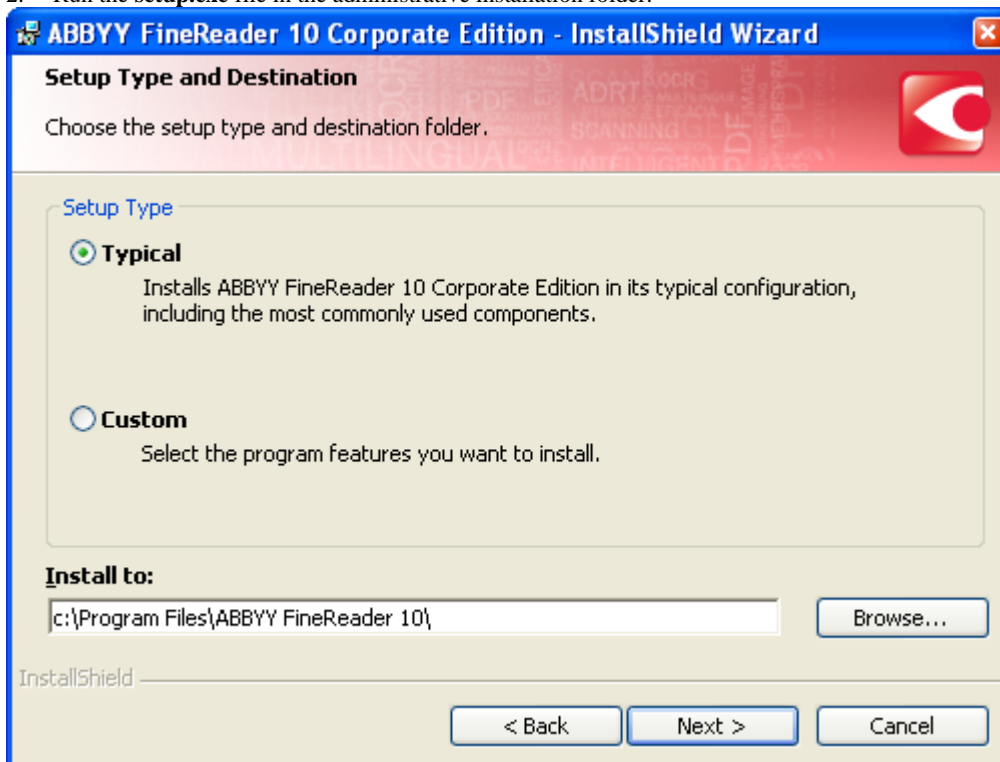
A workstation obtains a per-seat license and is bound to the server only when ABBYY FineReader 10 is installed on it in accordance with the configuration of the licenses at the time of the installation.

For details, see [Obtaining licenses when installing ABBYY FineReader 10](#).

Note: Do not install different editions of ABBYY FineReader at the same time.

Interactive installation

1. Perform ABBYY FineReader 10 administrative installation (see [Step 1. Administrative installation](#) for details).
2. Run the **setup.exe** file in the administrative installation folder.



3. Follow the instructions of the setup wizard.

Command line installation

1. Perform ABBYY FineReader 10 administrative installation (see [Step 1. Administrative installation](#) for details).
2. Run the **setup.exe** file in the administrative installation folder using the command line parameters described below.

Advertise installation

For advertise installation, type

Setup.exe /j

The program icon will appear in the workstation's **Start** menu. Clicking this icon automatically installs the program in default configuration, i.e. all the recognition languages are installed on the workstation and the interface language is selected based on the workstation's regional settings.

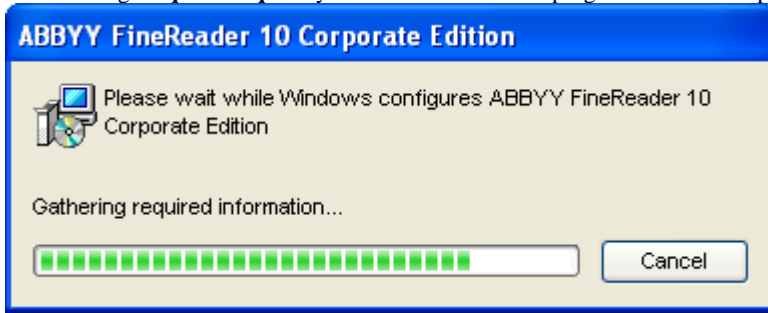
Silent installation

For silent installation, type

Setup.exe /qn

In the case of silent installation, no set-up dialog boxes are displayed and the program is installed in default configuration, i.e. all the recognition languages are installed on the workstation, and the interface language is selected based on the workstation's regional settings.

Note: Change “/qn” to “/qb” if you want an installation progress bar to be displayed. No other dialog boxes will be displayed.



Additional command-line options for silent installation

/L<language code> disables automatic selection of the interface language and installs ABBYY FineReader with the interface language specified in the command line.

Possible **language code*** values:

1026	Bulgarian
1028	Chinese (Taiwan)
1029	Czech
1030	Danish
1031	German
1033	English
1034	Spanish
1036	French
1038	Hungarian
1040	Italian
1042	Korean
1043	Dutch
1045	Polish
1046	Portuguese (Brazilian)
1049	Russian
1051	Slovak
1053	Swedish
1055	Turkish
1058	Ukrainian
1063	Lithuanian
2052	Chinese (PRC)

*The number of available interface languages depends on the type of your distribution package.

/V"<command line>" passes the specified command line directly to **msiexec.exe**. Instead of the words “command line” you can specify the following:

INSTALLDIR=<destination path> specifies the path to the folder where ABBYY FineReader 10 will be installed.

E.g.:

Setup.exe /qn /L1049 /v"INSTALLDIR="C:\ABBYY FineReader 10"

This command line will install ABBYY FineReader 10 into C:\ABBYY FineReader 10 with the Russian interface and with all the recognition languages.

In the current version, you cannot pre-select recognition languages to be installed.

Uninstalling ABBYY FineReader 10 in silent mode

```
msiexec /x {F1000000-0001-0000-0000-074957833700}
```

Using Active Directory

Microsoft Windows Server 2003 and Microsoft Windows Server 2008 include an integrated directory service, **Active Directory**, which, in turn, includes **Group Policy**. The Software Installation snap-in, which is part of Group Policy, allows you to install a software application on several workstations simultaneously.

Three major installation methods are implemented in **Active Directory**:

- Publish to User
- Assign to User
- Assign to Computer

ABBYY FineReader 10 can be installed using the **Assign to Computer** method.

Important!

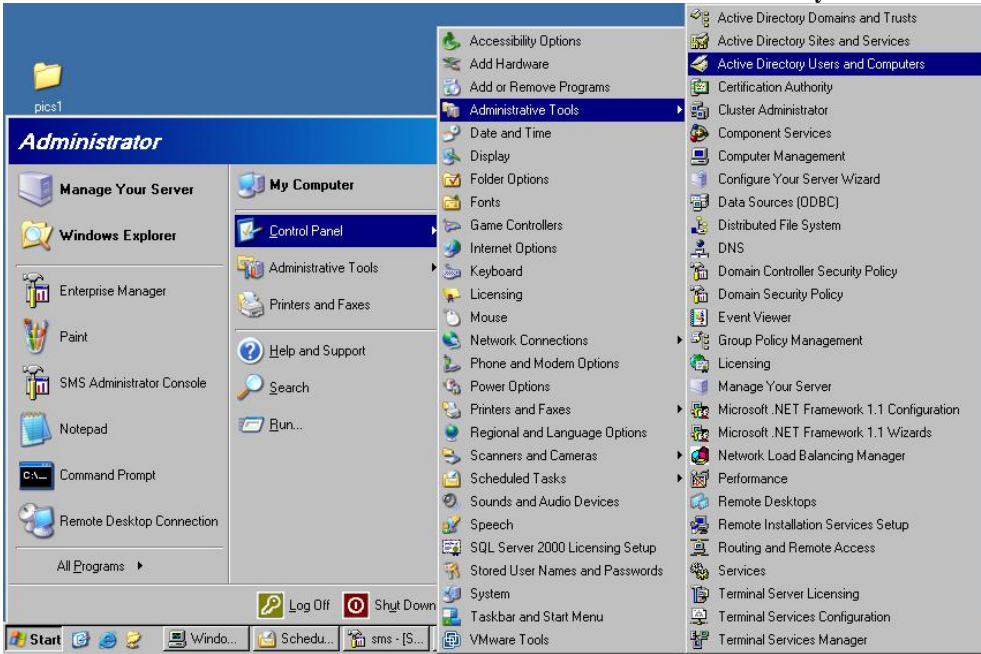
- ABBYY FineReader 10 will be completely installed on a workstation only after the workstation is restarted.
- The **Publish to User** and **Assign to User** methods are not supported.

Example: Using Active Directory to deploy ABBYY FineReader 10

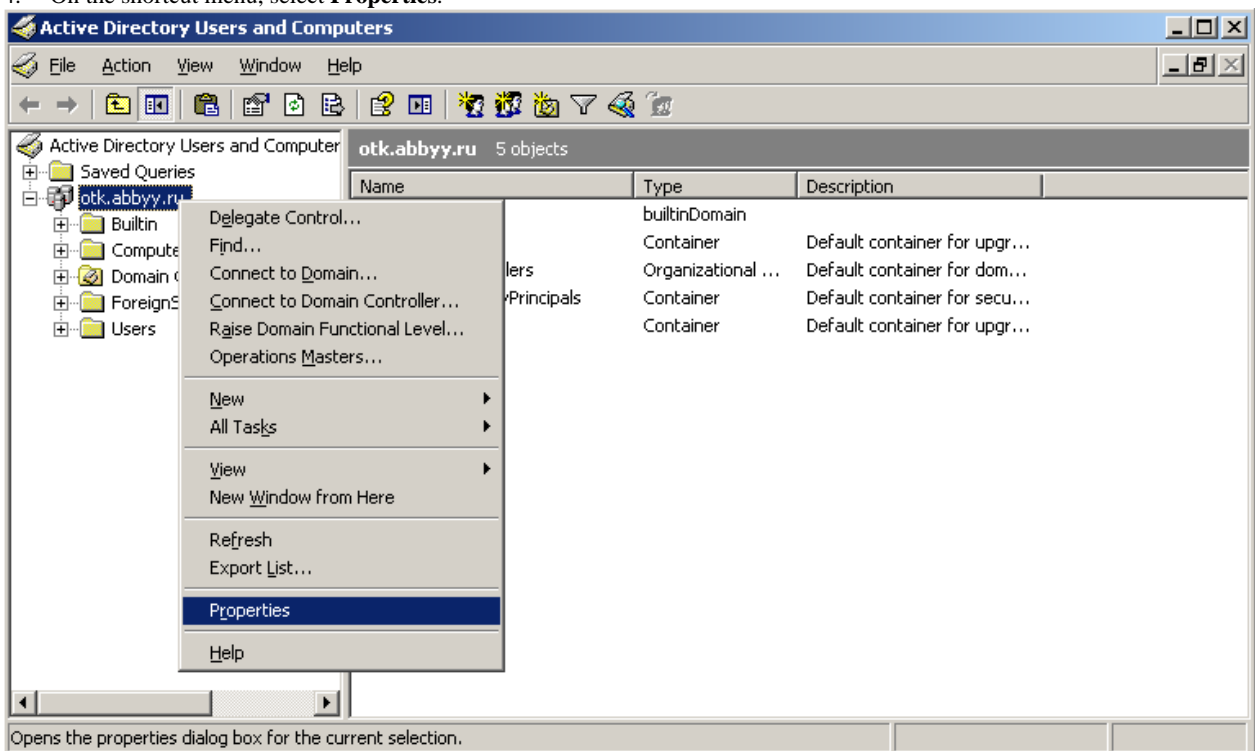
This example illustrates deployment under Microsoft Windows Server 2003 with Microsoft Group Management Console installed.

The program is installed on one domain computer or on a group of computers:

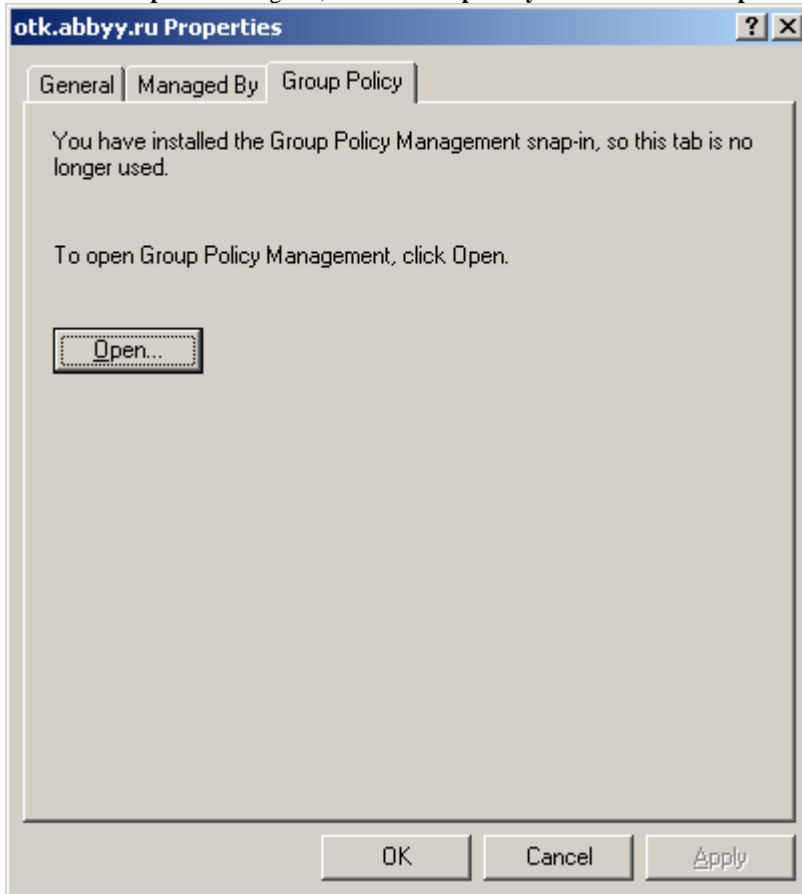
1. Perform administrative installation (see [Step 1. Administrative installation](#)).
2. Go to **Start>Control Panel>Administrative Tools** and select **Active Directory Users and Computers**.



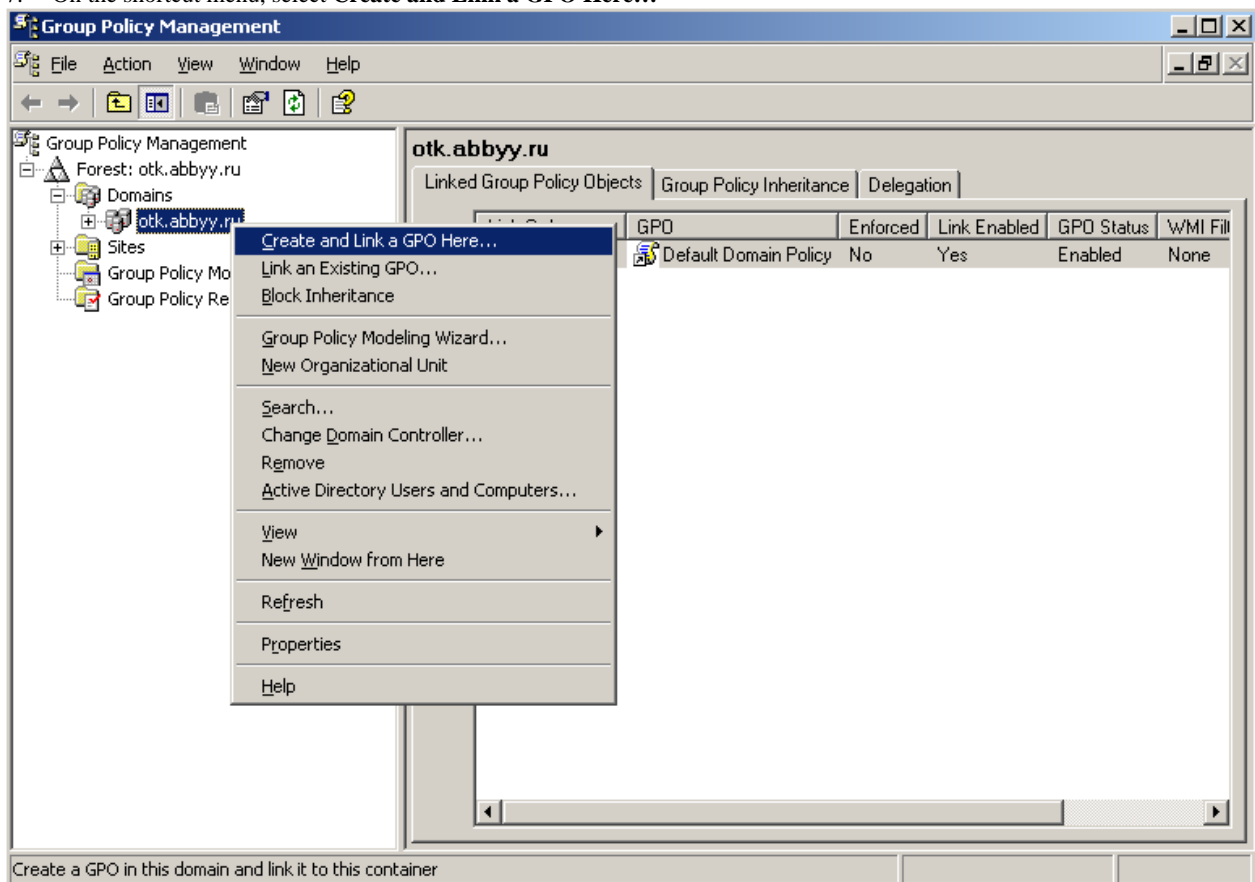
3. Right-click the site, domain, or another organized unit that contains the computer or group of computers onto which ABBYY FineReader 10 is to be installed.
4. On the shortcut menu, select **Properties**.



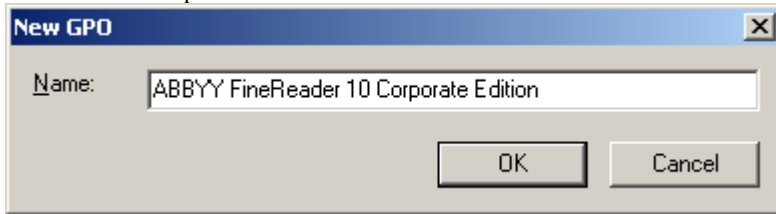
5. In the **Properties** dialog box, click the **Group Policy** tab and then click **Open...**



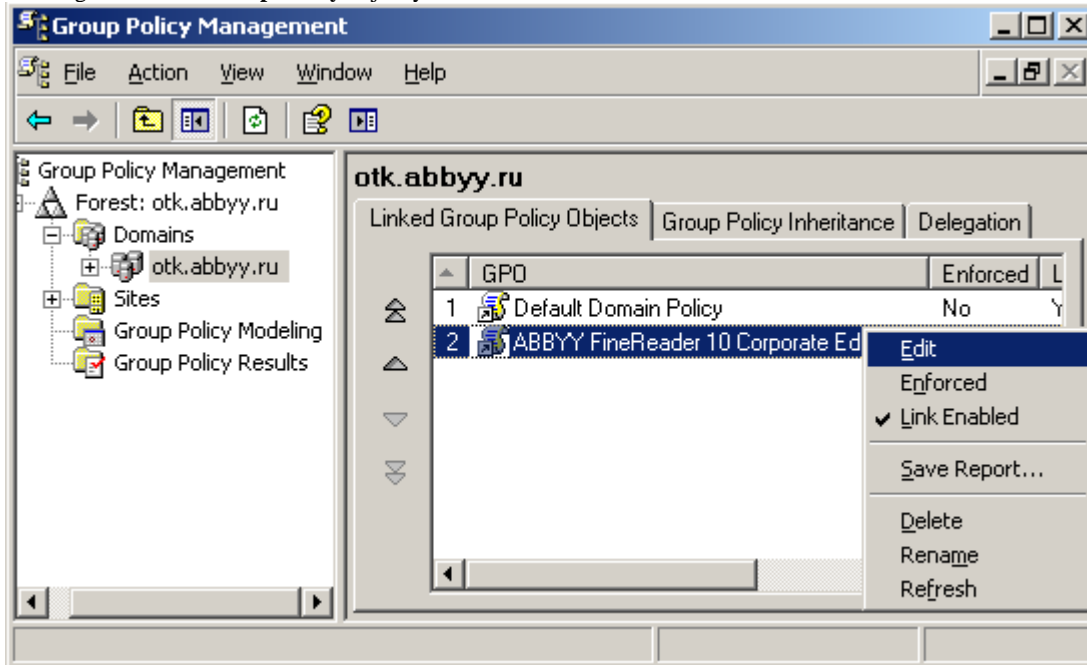
6. Right-click the organized unit that contains the computer or group of computers onto which ABBYY FineReader 10 is to be installed.
7. On the shortcut menu, select **Create and Link a GPO Here...**



8. Enter a descriptive name and click **OK**.

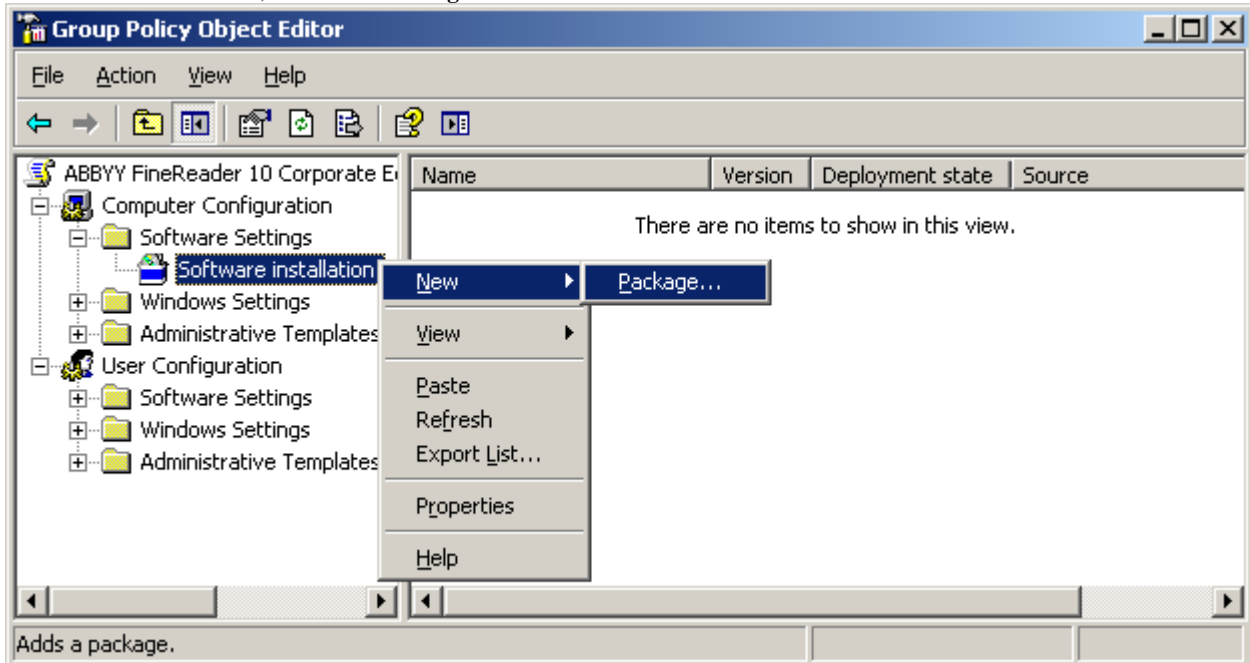


9. Right-click the **Group Policy** object you have created and select **Edit**.



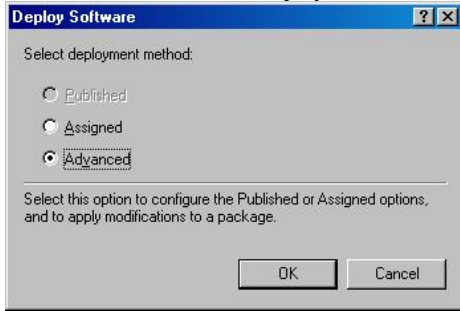
10. In the **Group Policy Object Editor** window, click **Computer Configuration> Software Settings>Software Installation**.

11. On the shortcut menu, select **New/Package...**

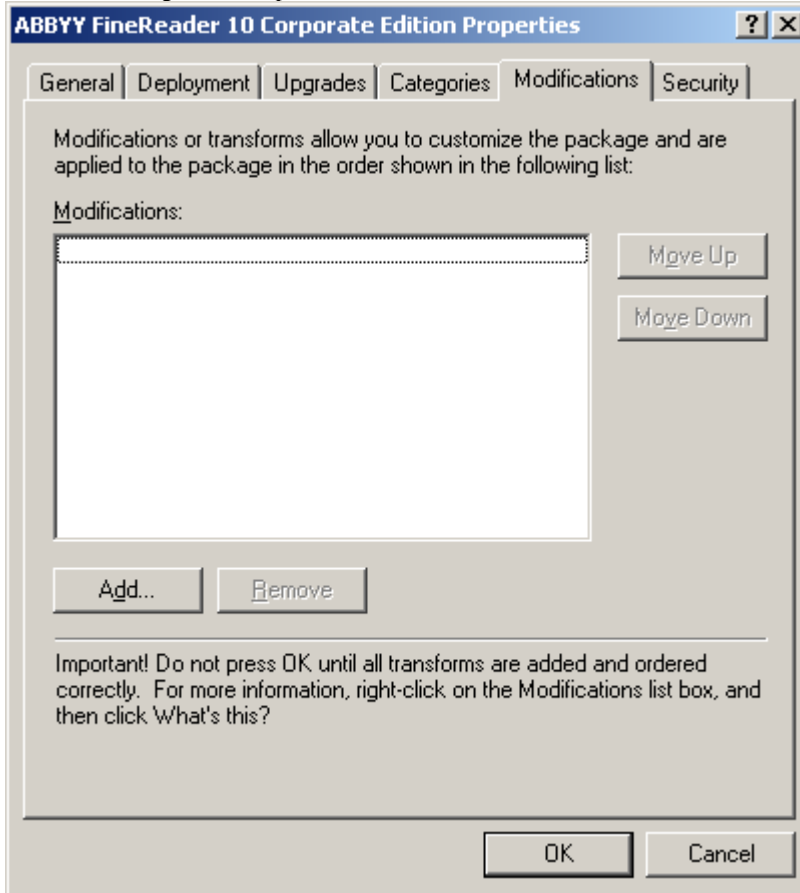


12. Provide the network path to the file **ABBYY FineReader 10 Corporate Edition.msi** that is located in the administrative installation folder on the server (see [Step 1. Administrative installation](#)).

13. Select the **Advanced** deployment method.



14. In the dialog box that opens, click the **Modifications** tab and then click the **Add...** button.



15. Select the interface language that will be used by ABBYY FineReader when installed on the workstations. The interface language files are located in the administrative installation folder on the server.

File names and their languages:

1026.mst	Bulgarian
1028.mst	Chinese (Taiwan)
1029.mst	Czech
1030.mst	Danish
1031.mst	German
1033.mst	English
1034.mst	Spanish
1036.mst	French
1038.mst	Hungarian
1040.mst	Italian
1042.mst	Korean
1043.mst	Dutch
1045.mst	Polish
1046.mst	Portuguese (Brazilian)
1049.mst	Russian
1051.mst	Slovak
1053.mst	Swedish
1055.mst	Turkish
1058.mst	Ukrainian

1063.mst Lithuanian
2052.mst Chinese (PRC)

E.g.: To install ABBYY FineReader with the Russian interface, select **1049.mst**.

Using Microsoft Systems Management Server (SMS)

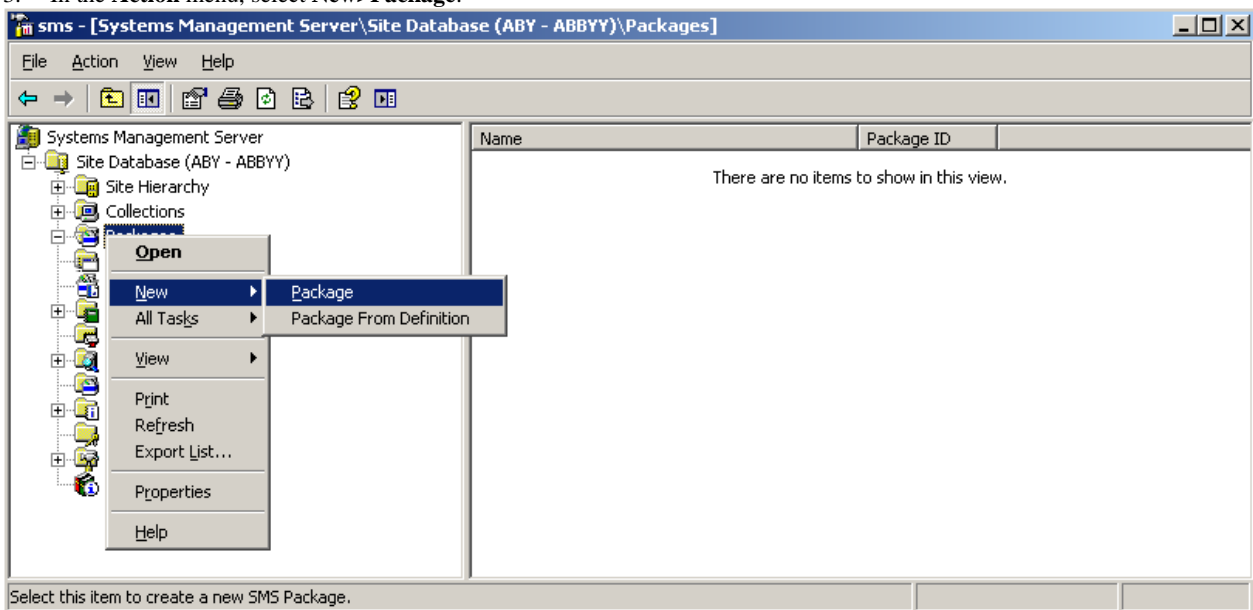
Microsoft Systems Management Server automates software deployment in a local area network and eliminates the need to go directly to the locations where the software is to be installed (computers, groups, or servers).

Software deployment using SMS comprises three stages:

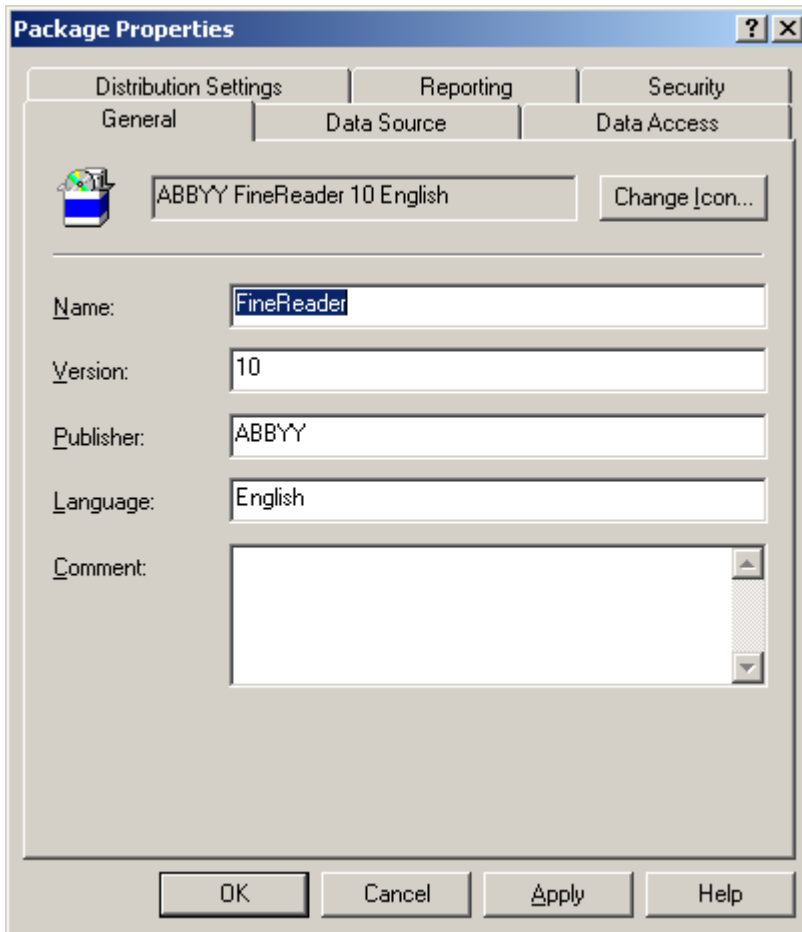
1. Preparing ABBYY FineReader 10 for automated installation (creating so-called "unattended setup").
2. Creating a deployment script, i.e. choosing installation parameters:
 - computer names
 - time of installation
 - conditions for installation
3. Installing the software on the specified computers by SMS in accordance with the installation parameters specified in the script.

Example: Using SMS to deploy ABBYY FineReader 10

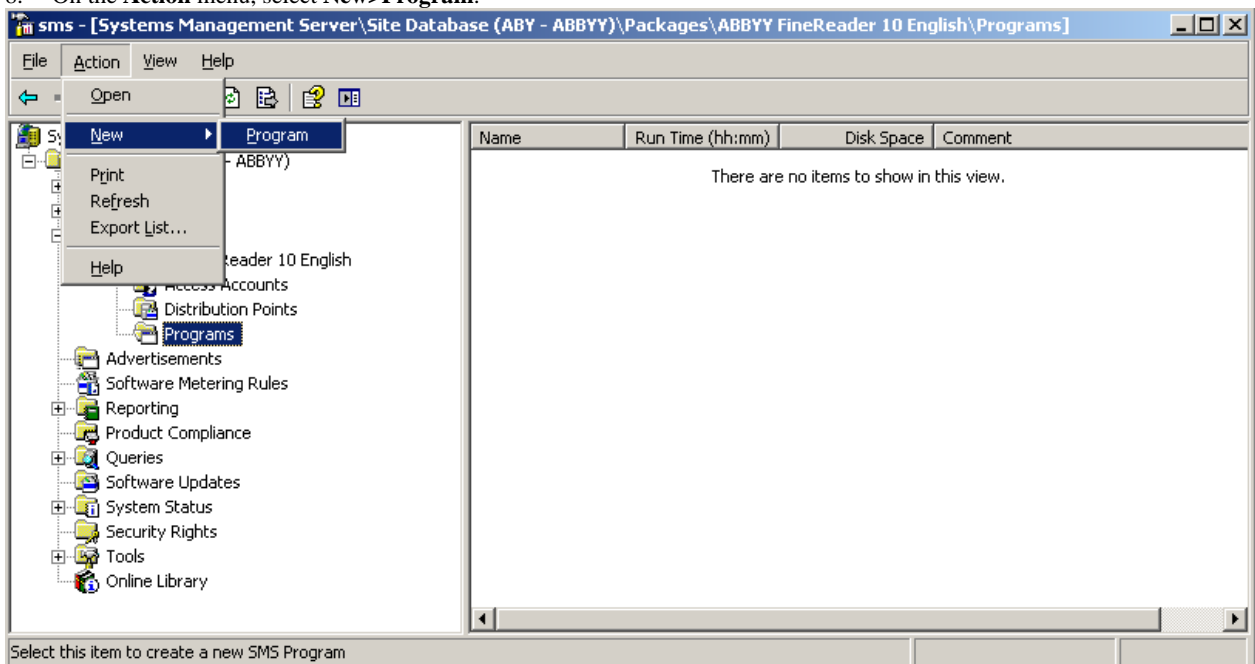
1. Perform administrative installation (see [Step 1. Administrative installation](#)).
2. In the SMS Administrator Console, select the **Packages** item.
3. In the **Action** menu, select **New>Package**.



4. In the **Package Properties** dialog box that opens, enter the required package properties.

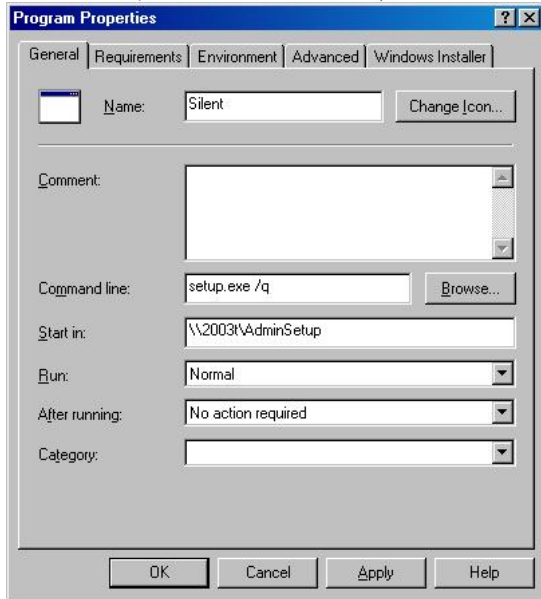


5. Click the **Data Source** tab.
6. Make sure that the **This package contains source files** box is not selected and click **OK**.
7. In the package you have just created, select **Programs**.
8. On the **Action** menu, select **New>Program**.



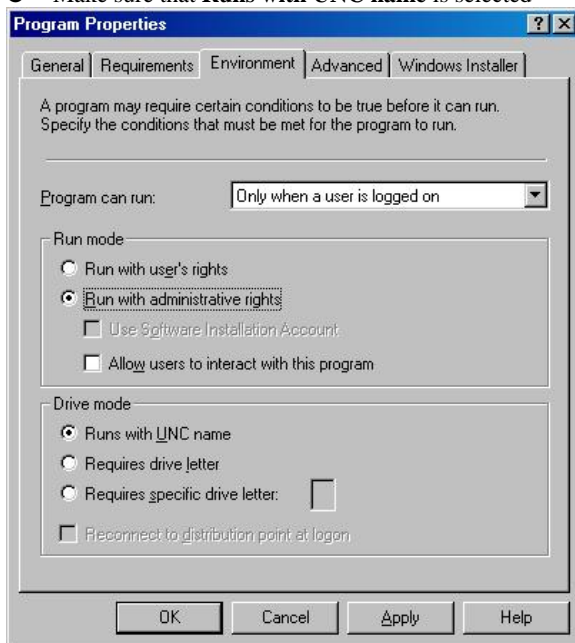
9. On the **General** tab of the **Program Properties** dialog box:
 - Enter a descriptive name for the program in the **Name** field
 - Type **setup.exe /q** in the **Command Line** field

- In the **Start in** field, enter the path to the administrative installation folder (e.g. \\MyFileServer\Programs Distributions\ABBYY FineReader 10)



10. On the **Environment** tab of the **Program Properties** dialog box:

- Select **Run with administrative rights**
- Make sure that **Runs with UNC name** is selected



11. Change the condition in the **Program can run** field if required and click **OK**.
12. You can also use the **Distribute Software Wizard**. To run the wizard, on the **Action** menu, select **All Tasks>Distribute Software** and follow the instructions of the wizard.

Important! You cannot create Distribution Points.

Using Task Scheduler

To install ABBYY FineReader on workstations using **Task Scheduler**:

1. Perform administrative installation (see [Step 1. Administrative installation](#)).
2. Make sure that Task Scheduler is running on the workstation, that a user with local administrator rights is registered on the workstation, and that this user has access rights to the administrative installation folder and to the ABBYY FineReader 10 License Server.

3. Create a new task on the workstation:
 - Specify the following parameters on the **Task** tab:
 - **Run** field: “\\MyFileServer\Programs Distributions\ABBYY FineReader 10\setup.exe” /qn /L1033.
For a detailed treatment of the parameters, see [Command line installation](#).
 - **Run as** field: **DOMAIN\Login**
 - In the **Set Password** dialog box, specify a password.
 - Make sure that the **Enabled** option is selected.

Note: **DOMAIN\Login** refers to the administrator of the workstation where ABBYY FineReader will be installed.
4. On the **Schedule** tab, specify the time when the installation must start.

Note: Do not change the **qn** parameter.

Frequently Asked Questions

How can I install ABBYY FineReader 10 on a terminal server?

The operation of ABBYY FineReader 10 Corporate Edition in terminal mode has been tested for the following configurations:

- Windows 2003 Terminal Server, Citrix Metaframe 4.0
- Windows 2008 Terminal Server

Important! Only Concurrent licenses support terminal mode.

1. Perform administrative installation.
The License Server and the License Manager can be installed on any computer in the local area network. See [Step 1. Administrative installation](#) for details.
2. Launch the License Manager.
3. Add all your licenses in the License Manager.
4. Install ABBYY FineReader 10 from the administrative installation folder onto the terminal server.

As a result, ABBYY FineReader 10 will be installed on the terminal server in the same way as it is installed on a workstation, and users will be able to work remotely with the client part of the application.

Note: The License Server can also be installed on the terminal server.

How can I change the network connection settings?

You can change the connection settings used for communication among the License Server, the License Manager, and the workstations.

Setting up a network connection

1. To set up a network connection, use the following file
`%programfiles%\Common Files\ABBYY\FineReader\10.00\Licensing\CE\Licensing.ini`
This file is located on the computer where the License Server is installed.
2. In the above file, change the desired parameters:
 - Connection protocol
See [Setting up the connection protocol](#) for details.
 - Connection port
See [Setting up the connection port](#) for details.E.g.:
[Licensing]
ConnectionProtocolType=TCP/IP
ConnectionEndpointName=81
Note: Make sure that your firewall does not prevent %programfiles%\Common Files\ABBYY\FineReader\10.00\Licensing\CE\NetworkLicenseServer.exe from accessing the specified port.
3. Copy the file **Licensing.ini**
 - in the License Manager folder on all the computers where the License Manager has been installed (by default, the License Manager is installed into `%programfiles%\ABBYY FineReader 10 CE License Manager`)
 - in the administrative installation folder where FineReader.exe is located, E.g. `\\MyFileServer\Programs Distributions\ABBYY FineReader 10`.
Important! For the changes to take effect, you must restart ABBYY FineReader 10 CE Licensing Service
4. Install ABBYY FineReader on the workstations.
For detailed instructions, see [Step 3. Installing ABBYY FineReader 10 on Workstations](#).
Note: If ABBYY FineReader is already installed on the workstations, repair ABBYY FineReader on all the workstations.
For detailed instructions, see [How can I repair ABBYY FineReader 10 on the workstations?](#)

Setting up the connection protocol

[Licensing]

ConnectionProtocolType=[TCP/IP | NAMED PIPES]

This parameter allows you to specify the protocol to be used (TCP/IP) or Named Pipes. This information will be used:

- by the License Manager to access the License Server
- by the workstations to access the License Server when installing or repairing ABBYY FineReader on the workstations

By default, Named Pipes is used.

Setting up the connection port

[Licensing]

ConnectionEndpointName=[port number for TCP/IP | channel name for Named Pipes]

This parameter allows you to specify the number of the port for the connection protocol or the name of the channel for Named Pipes. This information is used:

- by the License Manager to access the License Server
- by the workstations to access the License Server when installing or repairing ABBYY FineReader on the workstations

Note: Avoid changing the name of the named channel for the Named Pipes protocol that is set by the program when installing the License Server.

How can I repair ABBYY FineReader 10 on the workstations?

Repairing ABBYY FineReader 10 in interactive mode

On the workstation, do the following:

1. In **Start>Control Panel**, select **Add and Remove Programs**.
Note: In Microsoft Windows Vista and Microsoft Windows 7, this command is called **Programs and Features**.
2. In the list of installed programs, select **ABBYY FineReader 10 Corporate Edition** and click **Change**.
3. In the **Program Maintenance** dialog box that opens, select **Repair** and click **Next**.
4. Follow the instructions of the wizard.

Repairing ABBYY FineReader 10 via the command line

On the workstation, execute the following command:

- `msiexec /f {F1000000-0001-0000-0000-074957833700}`

How can I rename the computer hosting the License Server or move the License Server to another computer?

If you deployed ABBYY FineReader in the local area network and then changed the name of the computer hosting the License Server or an unexpected error occurred on the License Server computer, do the following:

1. Remove the License Server from the computer on which it was installed.
Note: If this computer is inaccessible, go to step 2.
 - a. In **Start>Control Panel**, select **Add and Remove Programs**.
Note: In Microsoft Windows Vista and Microsoft Windows 7, this command is called **Programs and Features**.
 - b. In the list of installed programs, select **ABBYY FineReader 10 CE License Server** and click **Remove**.
2. Install the License Server on a different computer, for example on `\\NewServer`.
3. On all the computers where the License Manager is installed, either edit or add the parameter
[Licensing]
NetworkServerName=<COMPUTER NAME> in the file
`%Program Files%\ABBYY FineReader 10 CE License Manager\LicenseManager.ini`

This parameter allows you to specify the name of the server to be accessed by the License Manager. For example, specify
[Licensing]
NetworkServerName=MyComputerName
Important! For the changes to take effect, you must restart ABBYY FineReader 10 CE License Manager
4. Add and activate your licenses in ABBYY FineReader 10 CE License Manager. For details, see [Step 2. Managing Licenses](#).
Note: It is recommended that the status of Per Seat license be recovered. For details, see [Recovering the status of a per-seat license](#).
5. In the administrative installation point, go to the ABBYY FineReader 10 folder and create a **Licensing.ini** file there. The path to the administrative installation folder was specified earlier when creating the administrative installation point. For details, see [Creating an administrative installation point](#).
6. In the **Licensing.ini** file you have created, add the **NetworkServerName** parameter to the [Licensing] section. This parameter specifies the name of the server, for example
[Licensing]
NetworkServerName=MyComputerName
7. Reinstall ABBYY FineReader on all the workstations.
For detailed instructions, see [Step 3. Installing ABBYY FineReader 10 on Workstations](#)

Group Work in a LAN

ABBYY FineReader 10 provides tools and capabilities for processing documents over a local area network (LAN).

Processing the same ABBYY FineReader document on several computers

When running ABBYY FineReader over a local area network, all the program tools and capabilities are available on the workstations.

If an ABBYY FineReader document is to be used on several LAN computers simultaneously, the following should be taken into account:

- A separate copy of ABBYY FineReader 10 should be installed on each computer.
- All the users must have full access to the ABBYY FineReader document.
- Each user may add pages to the document and modify them. If a user adds new pages and launches the OCR process for them, the program will process the entire document anew. While processing:
 - a. The editing tools in the **Text** window will be unavailable
 - b. The pages in the **Text** window will have a gray background
 - c. Users can only check the spelling and correct errors in the textOnce the page background changes to white, all the tools in the **Text** window will become available.
- A document page that is being processed by one user is locked for the other users.
- Users may monitor page status from the **Document** window, including the computer that is processing the document, which user has opened a page, whether a page has been recognized or edited, etc.
- The fonts that are used in the ABBYY FineReader document must be installed on each computer. Otherwise, the recognized text may be displayed incorrectly.

Using the same user languages and dictionaries on several computers

In ABBYY FineReader 10, several users can use the same user languages and dictionaries simultaneously. Several users can also add words to the same user dictionaries over the LAN.

To make user languages and dictionaries available to multiple users:

1. Create or open an ABBYY FineReader document and select the desired scanning and OCR options.
2. Before creating a user language, specify the network or local folder where user languages and dictionaries should be stored. By default, user languages and dictionaries are stored in the ABBYY FineReader document folder.

To specify a storage location for user languages:

 - Select **Tools>Options...**, click the **Advanced** tab, and provide the path to the folder under **User languages folder**.

To specify a storage location for user dictionaries:

 - Select **Tools>Options...**, click the **Advanced** tab, and then click the **Spell Checker Settings...** button.
 - In the **Spell Checker Settings** dialog box, click the **Browse...** button and select the desired folder.
3. Save the ABBYY FineReader document options to an *.fbt file.
4. The users wishing to work with the languages and dictionaries stored in the above folder should load the document options from this *.fbt file when creating a new ABBYY FineReader document, so that the same folder path will be used for all users.

Important! The users should have read and write permissions for the folder where user languages and dictionaries are stored.

To view the list of available user languages in the **Language Editor** dialog box, select **Tools>Language Editor...** and scroll to **User languages**.

When a user language is being used by several users, it is available as "read-only," and users will not be able to change user language properties. However, words can be added to and deleted from a user dictionary that is being used on multiple computers. When a user is adding words to a dictionary or editing a dictionary, the dictionary becomes locked for the other users. Once finished, changes become available to all users that have access to this language storage folder.

To update a dictionary:

- While checking the spelling (**Tools>Check Spelling...**), click the **Add...** button in the **Check Spelling** dialog box or
- Click any button in the **Select Dictionary** dialog box (**Tools>View Dictionaries...**).

Technical Support

If you have any questions about how to install and use ABBYY FineReader 10 to which you cannot find answers in this System Administrator's Guide, please contact the ABBYY technical support service or ABBYY partners. For contact information, please refer to the "Support" section at www.abby.com.