

# AutoCAD Plant 3D 2010 Trial Guide

The AutoCAD Plant 3D 2010 Trial is a free 30-day trial version. The Trial version is approximately 2 GB in size and the download time can take about 3 to 4 hours depending on your Internet connection.

Please follow these steps for a successful trial experience:

## 1. Review the System Requirements

The AutoCAD Plant 3D 2010 System Requirements document is attached.

## 2. Review the Installation Guide

The AutoCAD Plant 3D 2010 Stand-Alone Installation Guide is attached.

## 3. Join the AutoCAD Exchange Plant Group

The AutoCAD Exchange Plant Group at [www.autodesk.com/plantexchange](http://www.autodesk.com/plantexchange) is an online community for plant designers and engineers to get useful information for their work and careers. The community provides useful resources and features like **Support FAQs, Peer Q&A, Online Help, Ask the Expert, Discussion, Tips & Tricks, Design Showcase, and Networking.**

## 4. View the Getting Started Video Tutorials

In the **AutoCAD Exchange Plant Group**, view the series of **Getting Started Video Tutorials** in the **Tips & Tricks** section.

Thank you for trying AutoCAD Plant 3D 2010. If you have any questions or issues, please e-mail [plant.info@autodesk.com](mailto:plant.info@autodesk.com).

# AutoCAD Plant 3D 2010 System Requirements

## 32 Bit Version

<b>Operating system</b>	Windows Vista® Enterprise, Business, Ultimate, Home Premium (SP1); Windows® XP Professional, Home Edition (SP2 or later)  For more information on Windows Vista versions please see <a href="http://www.microsoft.com/windowsvista/versions">http://www.microsoft.com/windowsvista/versions</a>
<b>Browser</b>	Windows Internet Explorer® 7.0 or later
<b>CPU type</b>	Windows Vista: Intel® Pentium® 4 or AMD Athlon® Dual Core, 3.0 GHz or higher with SSE2 technology  Windows XP: Intel Pentium 4 or AMD Athlon Dual Core, 1.6 GHz or higher with SSE2 technology
<b>Memory</b>	Windows Vista: 2 GB RAM  Windows XP: 2 GB RAM
<b>Display resolution</b>	1280 x 1024 display with True Color
<b>Hard Disk</b>	1 GB free disk space for installation
<b>Pointing Device</b>	MS-Mouse compliant
<b>Media (CD ROM vs. DVD)</b>	Download and Installation from DVD or CD-ROM
<b>3D Modeling additional requirements</b>	<ul style="list-style-type: none"><li>• Intel Pentium 4 or AMD Athlon, 3.0 GHz or greater;</li><li>• Intel or AMD Dual Core, 2.0 GHz or greater</li><li>• 2 GB RAM or greater</li><li>• 2 GB free disk space available not including installation</li><li>• 1280 x 1024 32-bit color video display adapter (True Color) 128 MB or greater, Direct3D®-capable workstation class graphics card</li><li>• Microsoft Excel 2003</li></ul>

## AUTOCAD® PLANT 3D 2010 System Requirements

### 64 Bit Version

<b>Operating system</b>	Windows Vista® Enterprise, Business, Ultimate, Home Premium (SP1) Windows® XP Professional x64 Edition (SP2 or later)  For more information on Windows Vista versions please see <a href="http://www.microsoft.com/windowsvista/versions">http://www.microsoft.com/windowsvista/versions</a>
<b>Browser</b>	Windows Internet Explorer® 7.0 or later
<b>CPU type</b>	AMD Athlon® 64 or Opteron® with SSE2 technology; Intel® Pentium® 4 or Xeon® with Intel EM64T support & SSE2 technology
<b>Memory</b>	Windows Vista: 2 GB RAM  Windows XP: 2 GB RAM
<b>Display resolution</b>	1280 x 1024 with True Color
<b>Hard Disk</b>	1.5 GB free disk space for installation
<b>Pointing Device</b>	MS-Mouse compliant
<b>Media (CD ROM vs. DVD)</b>	Download and Installation from DVD or CD-ROM
<b>3D Modeling additional requirements</b>	<ul style="list-style-type: none"><li>• Intel Pentium 4 or AMD Athlon, 3.0 GHz or greater; Intel or AMD Dual Core, 2.0 GHz or greater</li><li>• 2 GB RAM or greater</li><li>• 2 GB free disk space available not including installation</li><li>• 1280 x 1024 32-bit color video display adapter (True Color) 128 MB or greater, Direct3D®-capable workstation class graphics card</li><li>• Microsoft Excel 2003</li></ul>

[www.autodesk.com/autocadplant3d](http://www.autodesk.com/autocadplant3d)

AutoCAD Plant 3D 2010

# Stand-Alone Installation Guide

The Autodesk logo is displayed vertically in white text on a black rectangular background. The word "Autodesk" is written in a sans-serif font, with a registered trademark symbol (®) at the top right of the word.

January 2009

© 2009 Autodesk, Inc. All Rights Reserved. Except as otherwise permitted by Autodesk, Inc., this publication, or parts thereof, may not be reproduced in any form, by any method, for any purpose.

Certain materials included in this publication are reprinted with the permission of the copyright holder.

The data from DIN Standards are used by permission of DIN Deutsches Institut für Normung e. V. They conform with the current version of the DIN Standards concerned (December 1, 2007, Autodesk)

The JIS symbols in this product are used by Autodesk under permission from JIS.

ISA Symbols © ISA

© Process Industry Practices (PIP), Construction Industry Institute, The University of Texas at Austin

ISO 10628:1997 Symbols © The International Organization for Standardization (ISO)

ISO 14617-5:2002 Symbols © The International Organization for Standardization (ISO)

ISO 14617-6:2002 Symbols © The International Organization for Standardization (ISO)

ISO 3511-1:1977 Symbols © The International Organization for Standardization (ISO)

ISO 3511-2:1984 Symbols © The International Organization for Standardization (ISO)

ISO 3511-3:1984 Symbols © The International Organization for Standardization (ISO)

DIN 2481:1979-06 Symbols © Deutsches Institut für Normung e. V. (DIN)

JIS Z 8204:1983 Symbols © Japanese Industrial Standard (JIS)

#### Trademarks

The following are registered trademarks or trademarks of Autodesk, Inc., in the USA and other countries: 3DEC (design/logo), 3December, 3December.com, 3ds Max, ADI, Alias, Alias (swirl design/logo), AliasStudio, AliasWavefront (design/logo), ATC, AUGI, AutoCAD, AutoCAD Learning Assistance, AutoCAD LT, AutoCAD Simulator, AutoCAD SQL Extension, AutoCAD SQL Interface, Autodesk, Autodesk Envision, Autodesk Insight, Autodesk Intent, Autodesk Inventor, Autodesk Map, Autodesk MapGuide, Autodesk Streamline, AutoLISP, AutoSnap, AutoSketch, AutoTrack, Backdraft, Built with ObjectARX (logo), Burn, Buzzsaw, CAICE, Can You Imagine, Character Studio, Cinestream, Civil 3D, Cleaner, Cleaner Central, ClearScale, Colour Warper, Combustion, Communication Specification, Constructware, Content Explorer, Create>what's>Next> (design/logo), Dancing Baby (image), DesignCenter, Design Doctor, Designer's Toolkit, DesignKids, DesignProf, DesignServer, DesignStudio, DesignStudio (design/logo), Design Web Format, Discreet, DWF, DWG, DWG (logo), DWG Extreme, DWG TrueConvert, DWG TrueView, DXF, Ecotect, Exposure, Extending the Design Team, Face Robot, FBX, Filmbox, Fire, Flame, Flint, FMDesktop, Freewheel, Frost, GDX Driver, Gmax, Green Building Studio, Heads-up Design, Heidi, HumanIK, IDEA Server, i-drop, ImageModeler, iMOUT, Incinerator, Inferno, Inventor, Inventor LT, Kaydara, Kaydara (design/logo), Kynapse, Kynogon, LandXplorer, LocationLogic, Lustre, Matchmover, Maya, Mechanical Desktop, Moonbox, MotionBuilder, Movimento, Mudbox, NavisWorks, ObjectARX, ObjectDBX, Open Reality, Opticore, Opticore Opus, PolarSnap, PortfolioWall, Powered with Autodesk Technology, Productstream, ProjectPoint, ProMaterials, RasterDWG, Reactor, RealDWG, Real-time Roto, REALVIZ, Recognize, Render Queue, Retimer, Reveal, Revit, Showcase, ShowMotion, SketchBook, Smoke, Softimage, SoftimageXSI (design/logo), SteeringWheels, Stitcher, Stone, StudioTools, Topobase, Toxik, TrustedDWG, ViewCube, Visual, Visual Construction, Visual Drainage, Visual Landscape, Visual Survey, Visual Toolbox, Visual LISP, Voice Reality, Volo, Vtour, Wire, Wiretap, WiretapCentral, XSI, and XSI (design/logo).

The following are registered trademarks or trademarks of Autodesk Canada Co. in the USA and/or Canada and other countries: Backburner, Multi-Master Editing, River, and Sparks.

The following are registered trademarks or trademarks of MoldflowCorp. in the USA and/or other countries: Moldflow, MPA, MPA (design/logo), Moldflow Plastics Advisers, MPI, MPI (design/logo), Moldflow Plastics Insight, MPX, MPX (design/logo), Moldflow Plastics Xpert.

All other brand names, product names or trademarks belong to their respective holders.

#### Disclaimer

THIS PUBLICATION AND THE INFORMATION CONTAINED HEREIN IS MADE AVAILABLE BY AUTODESK, INC. "AS IS." AUTODESK, INC. DISCLAIMS ALL WARRANTIES, EITHER EXPRESS OR IMPLIED, INCLUDING BUT NOT LIMITED TO ANY IMPLIED WARRANTIES OF MERCHANTABILITY OR FITNESS FOR A PARTICULAR PURPOSE REGARDING THESE MATERIALS.

Published by:  
Autodesk, Inc.  
111 McInnis Parkway  
San Rafael, CA 94903, USA

# Contents

<b>Chapter 1</b>	<b>Quick Start to Stand-Alone Installation . . . . .</b>	<b>1</b>
	Preparing for Installation . . . . .	1
	System Requirements . . . . .	1
	Understanding Administrative Permission Requirements . . . . .	5
	Locating Your Serial Number and Product Key . . . . .	6
	Avoiding Data Loss During Installation . . . . .	6
	Choosing a Language . . . . .	7
	Configure Button . . . . .	7
	Installing Multiple or Bundled Products . . . . .	8
	Installing and Running the Product . . . . .	9
	Installing AutoCAD Plant 3D . . . . .	9
	Register and Activate AutoCAD Plant 3D . . . . .	17
	Launch AutoCAD Plant 3D . . . . .	18
	Add or Remove Features . . . . .	19
	Reinstall or Repair AutoCAD Plant 3D . . . . .	20
	Uninstall AutoCAD Plant 3D . . . . .	21
	Installing Design Review . . . . .	22
<b>Chapter 2</b>	<b>Installation Troubleshooting . . . . .</b>	<b>23</b>
	General Installation Issues . . . . .	23
	How can I check my graphics card driver to see if it needs to be updated? . . . . .	23
	What is a text editor used for? . . . . .	24

When performing a Typical installation, what gets installed? . . . . .	24
Why should I install the Material Library? . . . . .	25
Where are my product manuals? . . . . .	26
How do I install the Specs and Catalogs Editor without activating 3D Modeling? . . . . .	26
Licensing Issues . . . . .	26
What is the difference between a stand-alone license and a network license? . . . . .	26
What is the benefit of using a network licensed version of the software? . . . . .	27
What is Internet Explorer used for? . . . . .	27
Uninstall and Maintenance Issues . . . . .	28
When adding or removing features, how can I tell what features get installed by default? . . . . .	28
Is it possible to change the installation folder when adding or removing features? . . . . .	29
When should I reinstall the product instead of a repair? . . . . .	29
Do I need my original disc to reinstall my software? . . . . .	30
After repairing my installation, is it possible to recover my settings? . . . . .	30
When I uninstall my software, what files are left on my system? . . . . .	30
<b>Index . . . . .</b>	<b>31</b>

# Quick Start to Stand-Alone Installation

# 1

The *Stand-Alone Installation Guide* provides instructions about how to prepare, and then install AutoCAD Plant 3D 2010. If you have never installed the product before, you should familiarize yourself with the entire installation process and options before beginning.

For information about installing network-licensed versions of the program, see the following related topics:

- Choose an Installation Type (*Network Administrator's Guide*)
- Select a License Type (optional) (*Network Administrator's Guide*)
- What is the difference between a stand-alone license and a network license?
- What is the benefit of using a network licensed version of the software?

## Preparing for Installation

To prepare for installation, you should review the system requirements, understand administrative permission requirements, locate your AutoCAD Plant 3D serial number and product key, and close all running applications. Complete these tasks, and you are ready to begin installing AutoCAD Plant 3D.

## System Requirements

The first task you need to complete is to make sure that your computer meets the minimum system requirements. If your system does not meet these requirements, problems can occur, both within AutoCAD Plant 3D and at the operating system level.



Whether your Windows operating system is the 32-bit or the 64-bit version, the version is automatically detected during installation. The appropriate version of AutoCAD Plant 3D is installed. A 64-bit version of AutoCAD Plant 3D cannot be installed on a 32-bit system and vice-versa.

See the following table for hardware and software requirements.

<b>32-bit Hardware and Software Requirements</b>		
<b>Operating systems</b>	Windows® XP Home and Professional Edition SP2 or later Microsoft® Windows Vista® SP1 or later including: ■ Windows Vista Enterprise ■ Windows Vista Business ■ Windows Vista Ultimate ■ Windows Vista Home Premium	For more information on Windows Vista versions see <a href="http://www.microsoft.com/windowsvista/versions/">http://www.microsoft.com/windowsvista/versions/</a>
<b>Browser</b>	Internet Explorer® 7.0 or later	
<b>CPU type</b>	<i>Windows XP</i> - Intel® Pentium® 4 or AMD Athlon™ Dual Core processor, 1.6 GHz or higher with SSE2 technology <i>Windows Vista</i> - Intel Pentium 4 or AMD Athlon Dual Core processor, 3.0 GHz or higher with SSE2 technology	
<b>Memory</b>	<i>Windows XP</i> - 2 GB RAM <i>Windows Vista</i> - 2 GB RAM	
<b>Display resolution</b>	1024 x 768 with True Color	
<b>Hard disk</b>	Installation 2.75 GB	A 32-bit AutoCAD Plant 3D cannot be installed on a 64-bit Windows operating system and vice-versa.
<b>Pointing device</b>	MS-Mouse compliant	
<b>3D Modeling Additional Requirements</b>	■ Intel Pentium 4 or AMD Athlon processor, 3.0 GHz or higher; or Intel or AMD Dual Core processor, 2.0 GHz or higher	

---

### 32-bit Hardware and Software Requirements

---

- 2 GB RAM or greater
  - 2 GB free hard disk space available not including installation
  - 1280 x 1024 32-bit color video display adapter (True Color) 128 MB or greater, Direct3D® capable workstation class graphics card
- 

---

### 64-bit Hardware and Software Requirements

---

<b>Operating systems</b>	Windows® XP Professional x64 Edition SP2 or later Microsoft® Windows Vista® SP1 or later including: <ul style="list-style-type: none"><li>■ Windows Vista Enterprise</li><li>■ Windows Vista Business</li><li>■ Windows Vista Ultimate</li><li>■ Windows Vista Home Premium</li></ul>	For more information on Windows Vista versions see <a href="http://www.microsoft.com/windowsvista/versions/">http://www.microsoft.com/windowsvista/versions/</a>
--------------------------	--	--

---

<b>Browser</b>	Internet Explorer 7.0 or later
----------------	--------------------------------

---

<b>CPU type</b>	AMD Athlon 64 with SSE2 technology AMD Opteron™ with SSE2 technology Intel Xeon with Intel EM64T support and SSE2 technology Intel Pentium 4 with Intel EM64T support and SSE2 technology
-----------------	--

---

<b>Memory</b>	Windows XP - 2 GB RAM Windows Vista - 2 GB RAM
---------------	---

---

<b>Display resolution</b>	1024 x 768 with True Color
---------------------------	----------------------------

---

<b>Hard disk</b>	Installation 3.0 GB	A 64-bit AutoCAD Plant 3D cannot be installed on a 32-bit Windows operating system and vice-versa.
------------------	---------------------	--

---

<b>Pointing device</b>	MS-Mouse compliant
------------------------	--------------------

---

---

## 64-bit Hardware and Software Requirements

---

<b>3D Modeling Additional Requirements</b>	■ Intel Pentium 4 or AMD Athlon processor, 3.0 GHz or higher; or Intel or AMD Dual Core processor, 2.0 GHz or higher
	■ 2 GB RAM or greater
	■ 2 GB free hard disk space available not including installation
	■ 1280 x 1024 32-bit color video display adapter (True Color) 128 MB or greater, Direct3D® capable workstation class graphics card

---

## Additional Hardware and Software Recommendations - 3D use

---

<b>Operating system</b>	<b>32-Bit</b> Windows XP Home and Professional SP2 or later Windows Vista Enterprise Windows Vista Business Windows Vista Ultimate Windows Vista Home Premium	■ It is recommended that non-English language versions of AutoCAD Plant 3D be installed on an operating system with a user interface language that matches the code page of AutoCAD Plant 3D language. A code page provides support for character sets used in different languages.  ■ Whether the Windows operating system is 32-bit or 64-bit, the version is automatically detected when you install AutoCAD Plant 3D. The appropriate version of AutoCAD Plant 3D is installed. The 32-bit version of AutoCAD Plant 3D cannot be installed on a 64-bit version of Windows and vice-versa.
	<b>64-Bit</b> Windows XP Professional x64 Edition SP2 or later Windows Vista Enterprise 64-bit Windows Vista Business 64-bit Windows Vista Ultimate 64-bit Windows Vista Home Premium 64-bit	

---

<b>Processor</b>	Intel Pentium 4 processor or AMD Athlon, 2.2 GHz or greater or
------------------	---

---

### Additional Hardware and Software Recommendations - 3D use

---

	Intel or AMD Dual Core processor, 1.6 GHz or greater	
RAM	2 GB (or greater)	
Graphics card	<p>1280 x 1024 32-bit color video display adapter (True Color); 128 MB or greater Direct3D capable workstation class graphics card.</p> <p>For Windows Vista, a Direct3D capable workstation class graphics card with 128 MB or greater is required; 1024 x 768 VGA with True Color (minimum)</p>	<ul style="list-style-type: none"><li>■ For graphic cards that support Hardware Acceleration, DirectX 9.0c, or later, must be installed.</li><li>■ Installing from the <i>ACAD.msi</i> file does not install DirectX 9.0c, or later. Manual installation of DirectX is required, in this circumstance, for Hardware Acceleration to be configured.</li></ul> <p>For more information about tested and certified graphics cards, visit <a href="http://autodesk.com/graphicscard/">http://autodesk.com/graphicscard/</a></p>
Hard disk	2 GB (in addition to the 1 GB or above required for installation)	

---

**NOTE** Adobe Flash Player is not installed by default. If a version of Flash is not currently installed on your system, a message is displayed requesting that you download it from Adobe's website. If you do not have Internet access, you can also access the Flash installer on the AutoCAD Plant 3D disc.

---

## Understanding Administrative Permission Requirements

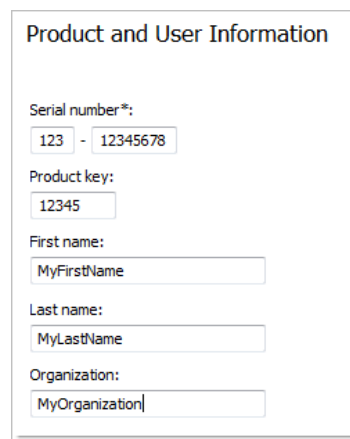
To install AutoCAD Plant 3D, you must have administrator permissions. You do not need to have domain administrative permissions. See your system administrator for information about administrative permissions.

You do not need administrator permissions to run AutoCAD Plant 3D. You can run the program as a limited user.

## Locating Your Serial Number and Product Key

When you install AutoCAD Plant 3D, you are prompted for your serial number and product key in the Product and User Information page. The serial number and product key are located on the outside of the product packaging, or in the email you received if you downloaded your product. Make sure to have these available before you install the program so that you don't have to stop in the middle of the installation.

The serial number must contain a three-digit prefix followed by an eight-digit number. The product key consists of five digits.



The screenshot shows a dialog box titled "Product and User Information". It contains several input fields: "Serial number\*" with the value "123 - 12345678", "Product key" with the value "12345", "First name" with the value "MyFirstName", "Last name" with the value "MyLastName", and "Organization" with the value "MyOrganization".

The information you enter is permanently retained with the product. Because you can't change this information later without uninstalling, take care when entering the information. To review this product information later, on the InfoCenter toolbar, click the drop-down arrow next to the Help button (the question mark). Then click About.

---

**NOTE** If you have lost your serial number or product key, contact the Autodesk Business Center (ABC) at 800-538-6401 for assistance.

---

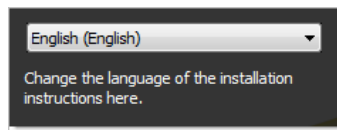
## Avoiding Data Loss During Installation

The AutoCAD Plant 3D installation process may stop if some applications (such as Microsoft® Outlook® or virus-checking programs) are running. Close all running applications to avoid possible installation problems and data loss.

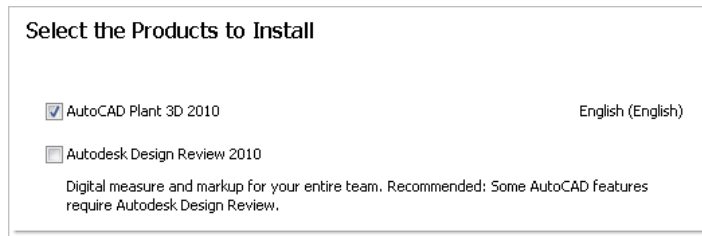
## Choosing a Language

You can select a different language for installation instructions, and a language for individual product installations in the same install process.

When you start the installation process, the installer automatically determines your operating system language. If a supported language is detected, your install pages are displayed in that language. If you want to change that language, you select a different one from the installer language list on the first page of the Installation wizard.



You can also select a language for an individual product by clicking the Select Language for Individual Products check box on the Select the Products to Install page, and then selecting a language from the drop-down list.



---

**NOTE** Some products may not have multiple languages available at the time of product release. Additional language packs may be available later for Subscription customers. Refer to <http://autodesk.com/servicesandsupport> for the availability of additional language packs.

---

## Configure Button

During the installation process, you choose either a typical installation (install the product with default settings), or a customized installation. If you choose to customize, you start that process in the Review - Configure - Install dialog box. Select the appropriate product from the drop-down list, and click the Configure button.

After you click the Configure button, the following dialog boxes and options are displayed:

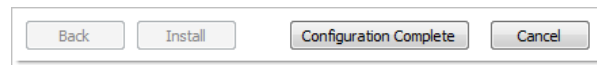
- **Select the License Type** - *Stand-Alone license* or *Network license*. If you choose Network license, you also need to select the license server model - Single, Distributed, or Redundant.
- **Select the Installation Type** - *Typical* or *Custom*. If you choose a Typical installation (default settings), the product installs the most common application features. To see which features are included in a Typical installation, refer to [When performing a Typical installation, what gets installed?](#) on page 24 If you choose Custom, you select specific features to install.
- **Include a Service Pack** - If a service pack is available for your installation, you can include it.

When you have completed your choices, click the Configuration Complete button. This takes you back to the Review - Configure - Create dialog box, where you can review your selections and complete the installation process.

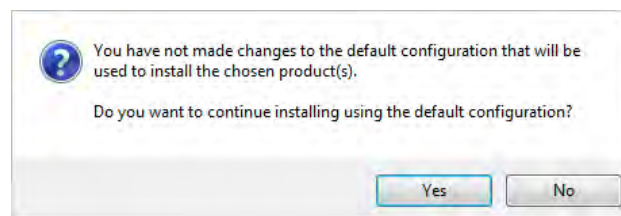
---

**NOTE** To get a copy of your settings, select the Copy to Clipboard button.

---



If you do not wish to make configuration changes on the Review - Configure - Install page, click Install. Then click Yes, to continue installing using the typical configuration.



## Installing Multiple or Bundled Products

Some Autodesk packages are comprised of multiple products or are part of *multi-product bundles*.

In the Installation wizard, for packages containing multiple products, you can choose which products and languages you want to install. During the install process, you are informed whether a copy of the software is already installed. You are also warned if your system does not meet the minimum system requirements for the product. Each product name is displayed on its own tabbed panel; you can configure them individually.

If you purchased a package that is a multi-product bundle, such as an educational or institutional package, you may have a package that includes several Autodesk products. For these bundled packages, an Installer disc contains information for all the products in the package. The Installer disc helps you install all of the products.

## Installing and Running the Product

To use the product, you must install the product, register and activate it, and then launch it. You must have administrative permissions to install AutoCAD Plant 3D.

This section provides instructions for installing and activating AutoCAD Plant 3D for an individual user on a stand-alone computer. For information about installing network-licensed or multi-seat stand-alone versions of the program, see the *Network Administrator's Guide*.

## Installing AutoCAD Plant 3D

The AutoCAD Plant 3D Installation wizard contains all installation-related material in one place. From the Installation wizard, you can access user documentation, change the installer language, select a language-specific product, install supplemental tools, and add online support services.

- **Review installation documentation before you install.** It is recommended that you take the time to familiarize yourself with the complete installation process before you install AutoCAD Plant 3D. You can access PDF versions of the installation and licensing manuals from the product's Installation wizard by selecting the Read this Documentation selection, the Documentation link at the bottom, left pane of the install pages, or through the Help system.  
You can also access PDFs from the product discs by navigating to the documentation (*docs*) folder. For late-breaking information, it is also recommended that you review the product *Readme*.



---

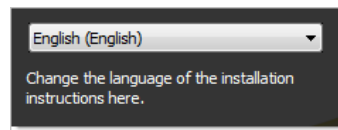
**NOTE** To view or print any files with an extension of *.pdf*, Adobe® Reader® must be installed on your computer. If you do not have Adobe Reader, you can download the latest version by visiting [www.adobe.com](http://www.adobe.com).

---

### To install AutoCAD Plant 3D using default values on a stand-alone computer

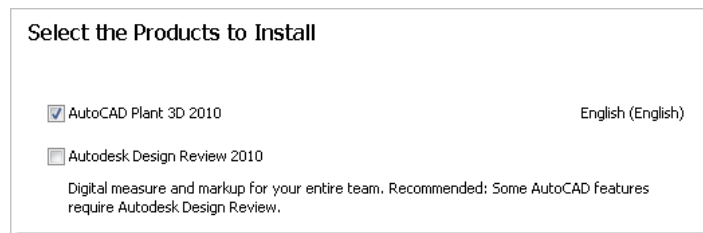
This is the fastest means of installing AutoCAD Plant 3D on your system. Only default values are used which means it is a typical installation being installed to *C:\Program Files\<AutoCAD Plant 3D>*.

- 1 Insert the AutoCAD Plant 3D disc(s) into your computer's drive.
- 2 In the AutoCAD Plant 3D Installation wizard, select a language for the install instructions or accept the default language. Click Install Products.



- 3 Select the product(s) and the language for the product(s) you want to install. Click Next.

In order to choose a language for an individual product, you first must click the Select Language for Individual Products check box, then select the language from the drop-down list. In some cases, additional languages may not be available for the products you choose to install.



---

**NOTE** Autodesk Design Review 2010 is not installed by default when you install AutoCAD Plant 3D. It is recommended that you install Design Review if you need to view DWF or DWFx files. For more information about Design Review, see [Installing Design Review](#) on page 22.

---

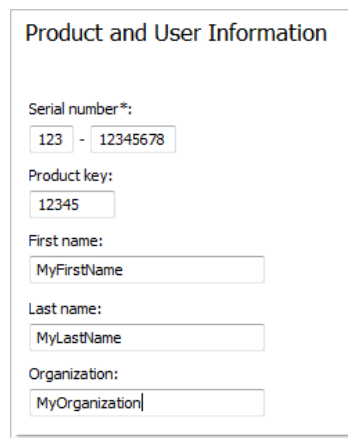
- 4 Review the Autodesk software license agreement for your country or region. You must accept this agreement to proceed with the installation. Select your country or region, click I Accept, and then click Next.

---

**NOTE** If you do not agree to the terms of the license and want to terminate the installation, click Cancel.

---

- 5 On the Products and User Information page, enter your serial number, product key, and user information. Review the *Privacy Policy* from the link at the bottom of the dialog box. After reviewing, click Next.



Product and User Information

Serial number\*:  
123 - 12345678

Product key:  
12345

First name:  
MyFirstName

Last name:  
MyLastName

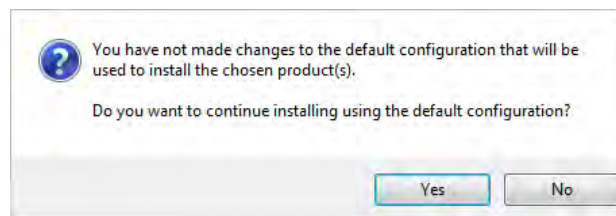
Organization:  
MyOrganization

---

**NOTE** The information you enter here is permanent and is displayed in the Help menu on your computer. Because you can't change this information later without uninstalling the product, make sure you enter the correct information.

---

- 6 If you do not want to make configuration changes on the Review - Configure - Install page, select Install. Then select Yes to continue installing using the default configuration.



The wizard does the following:

- Uses a Typical installation, which installs the most common application features. To see which features are included in a Typical installation, refer to [When performing a Typical installation, what gets installed?](#) on page 24.
- Includes the Express Tools library. The library provides additional productivity tools.
- Installs AutoCAD Plant 3D to the default install path of *C:\Program Files\<AutoCAD Plant 3D>*.

7 Click Install.

8 On the Installation Complete page, you can choose the following:

**View the installation log file** If you want to view the installation log file, its location is displayed.

**View the AutoCAD Plant 3D Readme** The *Readme* file is opened from this page when you click Finish. This file contains information that was unavailable when the AutoCAD Plant 3D documentation was prepared. If you do not want to view the *Readme* file now, clear the check box next to Readme.

---

**NOTE** You can also view the *Readme* file after you have installed AutoCAD Plant 3D.

---

### To install AutoCAD Plant 3D using configured values on a stand-alone computer

With this installation method, you can fine-tune exactly what gets installed by using the Configure option. You can alter the installation type, the install path, and the license type. You can also install Material libraries and Tutorial files.

- 1 Insert the AutoCAD Plant 3D disc(s) into your computer's drive.
- 2 In the AutoCAD Plant 3D Installation wizard, select a language for the install instructions or accept the default language. Click Install Products.
- 3 Select the product(s) and the language for the product(s) you want to install. Click Next.

To select a language for an individual product, click the Select Language for Individual Products check box, then select the language from the

language drop-down list. In some cases, additional languages may not be available for the products you choose to install.

---

**NOTE** Autodesk Design Review 2010 is not installed by default when you install AutoCAD Plant 3D. It is recommended that you install Design Review if you need to view DWF or DWFX files. For more information about Design Review, see [Installing Design Review](#) on page 22.

---

- 4 Review the Autodesk software license agreement for your country or region. You must accept this agreement to proceed with the installation. Choose your country or region, click I Accept, and then click Next.

---

**NOTE** If you do not agree to the terms of the license and want to terminate the installation, click Cancel.

---

- 5 On the Products and User Information page, enter your serial number, product key, and user information. Review the *Privacy Policy* from the link at the bottom of the dialog box. After reviewing, click Next.

---

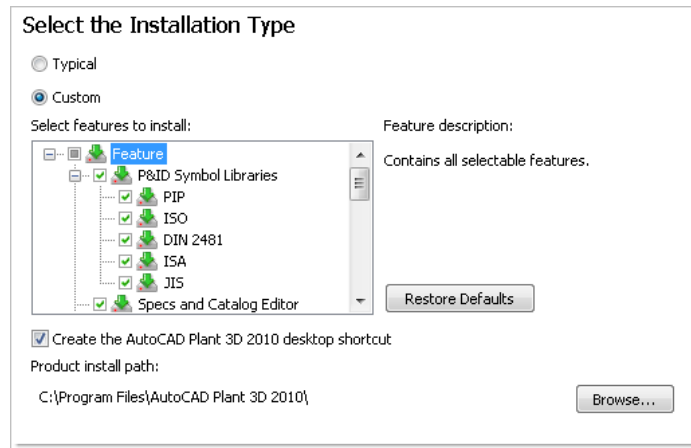
**NOTE** The information you enter here is permanent and is displayed in the Help menu on your computer. Because you can't change this information later without uninstalling the product, make sure you enter the correct information.

---

- 6 On the Review - Configure - Install page, click Configure to make configuration changes such as installation type, installing optional tools, or changing the installation path.



- 7 On the Select the License Type page, you can choose to install a Stand-alone or Network license. Click Next.
- 8 On the Select the Installation Type page, you can choose to make the following configuration changes:



- Typical - Installs the most common application features.
- Custom - Installs only the application features that you select from the Select Features to Install list

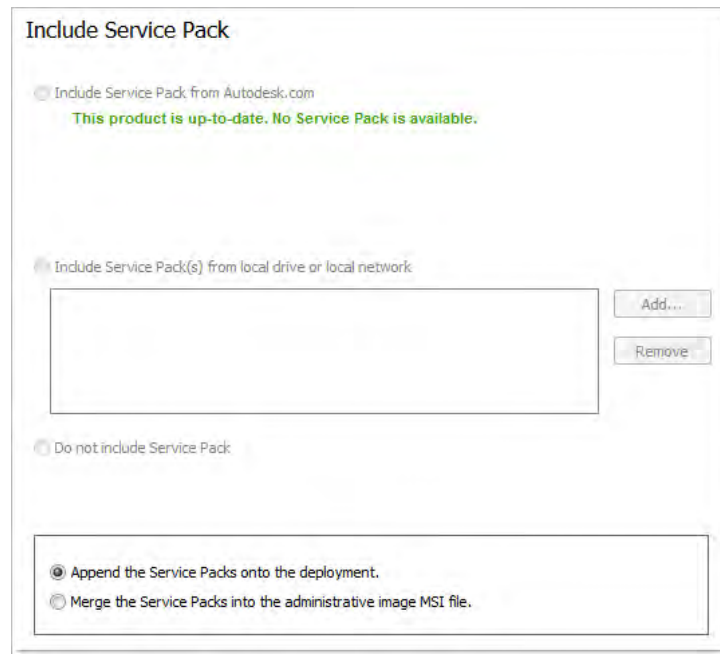
P&ID Symbol Libraries	Contains P&ID symbol libraries conforming to PIP, ISO, DIN 2481, JIS, ISA standards.
Specs and Catalogs Editor	Creates and modifies pipe spec files using industry standard parts catalogs.
CAD Standards	Contains tools for reviewing design files for compliance with your standards.
Database	Contains database access tools.
Dictionaries	Contains multi-language dictionaries.
Drawing Encryption	Allows you to use the Security Options dialog box to protect a drawing with a password.
Express Tools	Contains AutoCAD Plant 3D support tools and utilities (not supported by Autodesk).
Fonts	Contains AutoCAD Plant 3D fonts and TrueType fonts.
Autodesk Impression Toolbar	The Impression toolbar allows you to quickly export any view to Autodesk Impression for advanced line effects.

Autodesk Seek	Autodesk Seek.  <b>NOTE</b> Seek will only be installed in the English version of AutoCAD Plant 3D.
Material Library	The Material Library contains over 300 professionally built materials to apply to your model.
New Features Workshop	Contains animated demos, exercises, and sample files to help users learn the new features.
License Transfer Utility	Allows users to transfer an Autodesk product license between computers.  <b>NOTE</b> The utility will not be installed on unlocked versions of AutoCAD Plant 3D.
Migrate Custom Settings	Migrates custom settings and files from previous version of your product to this version.
Initial Setup	Allows users to set up their initial configuration of AutoCAD Plant 3D (online content, workspaces) based on their units system, industry, and commonly used task-based tools.
Reference Manager	Allows users to view and edit the paths of externally referenced files associated with a drawing.
Samples	Contains various feature sample files.
Tutorials	Contains tutorials.
VBA Support	Contains Microsoft Visual Basic for Applications support files.

- Product Install Path - Specifies the drive and location where AutoCAD Plant 3D will be installed.
- Create a Desktop Shortcut - Choose whether to display the AutoCAD Plant 3D shortcut icon on your desktop. A product icon is displayed on your desktop by default. Clear the check box if you do not want to display the shortcut icon.

- 9 On the Include Service Packs page, if service packs are available for your product, you can select to include them.

The installer automatically checks *autodesk.com* for available updates. If updates are available, a link is displayed.



- 10 Click another product tab to configure another product, or click Next and then Configuration Complete to return to the Review - Configure - Install page. Then, click Install.

---

**NOTE** If you want a copy of your configuration summary information, click the Copy to Clipboard button.

---

- 11 On the Installation Complete page, you can choose the following:

**View the installation log file** If you want to view the installation log file, its location is displayed.

**View the AutoCAD Plant 3D Readme** The *Readme* file is opened from this page when you click Finish. This file contains information that was unavailable when the AutoCAD Plant 3D documentation was prepared. If you do not want to view the *Readme* file now, clear the check box next to Readme.

---

**NOTE** You can also view the *Readme* file after you have installed AutoCAD Plant 3D.

---

**12** Click Finish.

You have successfully installed AutoCAD Plant 3D. You are now ready to register your product and start using the program. To register the product, start AutoCAD Plant 3D and follow the on-screen instructions.

---

**NOTE** Autodesk does not recommend or support the distribution of AutoCAD Plant 3D using imaging software. However, if you plan to use this method of distribution, please review the instructions detailed in the *Network Administrator's Guide*.

---

## Register and Activate AutoCAD Plant 3D

The first time you start AutoCAD Plant 3D, the Product Activation wizard is displayed. You can either activate AutoCAD Plant 3D at that time or run AutoCAD Plant 3D and activate it later. Until you register and enter a valid activation code for AutoCAD Plant 3D, you are operating the program in *trial mode* and the Product Activation wizard is displayed for 30 days from the first time that you run the program.

If after 30 days of running AutoCAD Plant 3D in trial mode you have not registered and provided a valid activation code, your only option is to register and activate AutoCAD Plant 3D. You will not be able to run in trial mode after the 30 days expires. Once you register and activate AutoCAD Plant 3D, the Product Activation wizard is no longer displayed.

The fastest and most reliable way to register and activate your product is by using the Internet. Simply enter your registration information and send it to Autodesk over the Internet. Once you submit your information, registration and activation occur quickly.

### To register and activate AutoCAD Plant 3D

**1** Do one of the following:

- (Windows XP) Click Start menu ► Programs ► Autodesk ► <AutoCAD Plant 3D> ► <AutoCAD Plant 3D>.
- (Windows Vista) Click Start menu ► All Programs ► Autodesk ► <AutoCAD Plant 3D> ► <AutoCAD Plant 3D>.



- 2 In the AutoCAD Plant 3D Product Activation wizard, select Activate the Product, and then click Next.

This starts the Register Today process.

- 3 Click Register and Activate (Get an Activation Code).

- 4 Click Next and follow the on-screen instructions.

If you do not have Internet access, or if you want to use another method of registration, you can register and activate AutoCAD Plant 3D in one of the following ways:

**Email** Create an email message with your registration information and send it to Autodesk.

**Fax or Post/Mail** Enter your registration information, and fax or mail the information to Autodesk.

## Launch AutoCAD Plant 3D

Assuming that you followed all of the previous steps outlined in this installation section, you can launch AutoCAD Plant 3D and start taking advantage of its new and updated features. For more information about the new features, see the *New Features Workshop* after you launch the product.

You can start AutoCAD Plant 3D in the following ways:

- **Desktop shortcut icon.** When you install AutoCAD Plant 3D, an AutoCAD Plant 3D shortcut icon is placed on your desktop unless you cleared that option during installation. Double-click the AutoCAD Plant 3D icon to start the program.
- **Start menu.** On the Start menu (Windows XP), click Programs or (Windows Vista) All Programs ➤ Autodesk ➤ <AutoCAD Plant 3D> ➤ <AutoCAD Plant 3D>.
- **Location where the AutoCAD Plant 3D is installed.** If you have administrative permissions, you can run AutoCAD Plant 3D in the location where you installed it. If you are a limited-rights user, you must run AutoCAD Plant 3D from the Start menu or from the desktop shortcut icon. If you want to create a custom shortcut, make sure that the Start In directory for the shortcut points to a directory where you have write permissions.

## Add or Remove Features

You can add or remove AutoCAD Plant 3D features at any time. For example, you may have chosen a Custom installation option when you first installed AutoCAD Plant 3D, but now you want to add features that you did not install originally. Or you may no longer need to use all of the features that were installed originally. You can add or remove features by using the Add or Remove Programs dialog box.

### To add or remove features

- 1 Do one of the following:
  - (Windows XP) Click Start menu ► Settings ► Control Panel ► Add or Remove Programs.
  - (Windows Vista) Click Start menu ► Control Panel ► Programs and Features ► Uninstall or Change a Program.
- 2 In the Add or Remove Programs dialog box, click AutoCAD Plant 3D, and then click Change/Remove.  
The AutoCAD Plant 3D Installation wizard re-opens in Maintenance Mode.
- 3 Click Add or Remove Features.
- 4 On the Add/Remove Features page, select a feature to install or uninstall. The icons to the left of the selections give you an indication of the action that will be taken.



Indicates a feature that was marked for installation will be in a typical installation.



Indicates a feature that is not currently scheduled for installation.



Indicates a feature that was not originally marked for installation, but was added to the installed feature list.



Indicates an installed feature that is chosen for removal.

---

**NOTE** If you need to revert to AutoCAD Plant 3D features that you selected in your original installation, click Cancel.

---

Click Next.

- 5 On the Update AutoCAD Plant 3D Installation page, click Next.

- 6 On the Update Complete page, you are informed when the updates have been performed. Click Finish.

## Reinstall or Repair AutoCAD Plant 3D

If you accidentally delete or alter files that are required by AutoCAD Plant 3D, AutoCAD Plant 3D might not perform correctly, and you might receive error messages when you try to execute a command or find a file. You can attempt to fix this problem by reinstalling or repairing AutoCAD Plant 3D. The reinstallation or repair uses the features that were part of the installation type you chose when you initially installed the program.

### To reinstall or repair AutoCAD Plant 3D

- 1 Do one of the following:
  - (Windows XP) Click Start menu ► Settings ► Control Panel ► Add or Remove Programs.
  - (Windows Vista) Click Start menu ► Control Panel ► Programs and Features ► Uninstall or Change a Program.
- 2 Then, do one of the following:
  - (Windows XP) In the Add or Remove Programs window, select AutoCAD Plant 3D, then click Change/Remove.
  - (Windows Vista) In the Uninstall or Change a Program window, select AutoCAD Plant 3D, then click Uninstall/Change.

The AutoCAD Plant 3D Installation wizard re-opens in Maintenance mode.

- 3 Select Repair or Reinstall. On the Select Repair or Reinstall page, select one of the following options, and then click Next to start the process.
  - **Repair My <AutoCAD Plant 3D> Installation.** This option replaces all registry entries that AutoCAD Plant 3D initially installed and restores AutoCAD Plant 3D to its default state. If you are missing AutoCAD Plant 3D files, use this option.
  - **Reinstall My <AutoCAD Plant 3D> Installation.** This option repairs the registry and reinstalls all files from the original installation. Use this option if the Repair My <AutoCAD Plant 3D> Installation option does not solve the problem.

- 4 On the Repair Complete page, click Finish.

## Uninstall AutoCAD Plant 3D

When you uninstall AutoCAD Plant 3D, all components are removed. This means that even if you've previously added or removed components, or if you've reinstalled or repaired AutoCAD Plant 3D, the uninstall removes all AutoCAD Plant 3D installation files from your system.

### To uninstall AutoCAD Plant 3D

- 1 Do one of the following:
  - (Windows XP) Click Start menu ► Settings ► Control Panel ► Add or Remove Programs.
  - (Windows Vista) Click Start menu ► Control Panel ► Programs and Features ► Uninstall or Change a Program.
- 2 Then, do one of the following:
  - (Windows XP) In the Add or Remove Programs window, select AutoCAD Plant 3D, then click Change/Remove.
  - (Windows Vista) In the Uninstall or Change a Program window, select AutoCAD Plant 3D, then click Uninstall/Change.

The AutoCAD Plant 3D Installation wizard re-opens in Maintenance mode.
- 3 Click Uninstall.
- 4 On the Uninstall <AutoCAD Plant 3D> page, click Next to remove AutoCAD Plant 3D from the system.
- 5 When informed that the product has been successfully uninstalled, click Finish.

---

**NOTE** Even though AutoCAD Plant 3D is removed from your system, the software license remains. If you reinstall AutoCAD Plant 3D at some future time, you will not have to register and re-activate the program.

---

## Installing Design Review

Autodesk Design Review 2010 is not installed by default when you install AutoCAD Plant 3D. It is recommended that Design Review be installed if you need to view DWF or DWFX files.

---

**NOTE** If you use Windows Vista, you can view and print DWFX files without installing Design Review.

---

Autodesk Design Review is a free program used for creating and reviewing DWF or DWFX files. An open, published, and secure file format developed by Autodesk, DWF enables you to combine and publish rich 2D- and 3D-design data, and share it with others.

The following commands create DWF or DWFX files.

- PUBLISH
- PLOT
- 3DDWF
- PUBLISH TO WEB
- EXPORT
- AUTOPUBLISH
- SSM

# Installation Troubleshooting

# 2

This section provides solutions to installation issues and answers to commonly asked questions that may arise while installing your product(s). Additional troubleshooting information and support is also available at <http://autodesk.com/support>.

## General Installation Issues

The following outlines common issues and their solutions that may arise while you are performing a general installation of your product(s).

### How can I check my graphics card driver to see if it needs to be updated?

It is recommended that you verify and update your graphics card driver to optimize your program. Use the following procedure to identify your current graphics card driver.

#### To identify your graphics card driver

- 1 Start AutoCAD Plant 3D.
- 2 At the command line, enter **3dconfig**.
- 3 In the Adaptive Degradation and Performance Tuning dialog box, click View Tune Log.
- 4 Review the 3D Device section for information about your system's graphics card driver and driver version.

---

**TIP** Many newer graphic cards offer tabbed pages where you can learn more precise information about your specific graphic card. If specific tab pages are present, refer to them instead of the Adapter tab.

---

## What is a text editor used for?

The text editor you designate during installation is used for editing text files such as PGP and CUS dictionary files while you are running your product.

## When performing a Typical installation, what gets installed?

A Typical installation includes the following features:

P&ID Symbol Libraries	Contains P&ID symbol libraries conforming to PIP, ISO, DIN 2481, JIS, and ISA standards.
Specs and Catalogs Editor	Creates and modifies pipe spec files using industry standard parts catalogs.
CAD Standards	Contains tools for reviewing design files for compliance with your standards.
Database	Contains database access tools.
Dictionaries	Contains multi-language dictionaries.
Drawing Encryption	Allows you to use the Security Options dialog box to protect a drawing with a password.
Express Tools	Contains AutoCAD Plant 3D support tools and utilities (not supported by Autodesk).
Fonts	Contains AutoCAD Plant 3D fonts and TrueType fonts.
Autodesk Impression Toolbar	The Impression toolbar allows you to quickly export any view to Autodesk Impression for advanced line effects.

Autodesk Seek	Autodesk Seek.  <b>NOTE</b> Seek will only be installed in the English version of AutoCAD Plant 3D.
New Features Workshop	Contains animated demos, exercises, and sample files to help users learn the new features.
License Transfer Utility	Allows users to transfer an Autodesk product license between computers.  <b>NOTE</b> The utility will not be installed on unlocked versions of AutoCAD Plant 3D.
Migrate Custom Settings	Migrates custom settings and files from previous version of your product to this version.
Initial Setup	Allows users to set up their initial configuration of AutoCAD Plant 3D (online content, workspaces) based on their units system, industry, and commonly used task-based tools.
Reference Manager	Allows users to view and edit the paths of externally referenced files associated with a drawing.
Samples	Contains various feature sample files.
VBA Support	Contains Microsoft Visual Basic for Applications support files.

## Why should I install the Material Library?

The Material Library contains over 300 professionally made materials that you can immediately apply to objects in your model. They can also act as a basis for custom materials that you want to create.

For more information regarding materials, see Materials and Textures in the *AutoCAD User's Guide*.



## Where are my product manuals?

Documentation for AutoCAD Plant 3D is in two formats: PDF files and CHM files.

- PDF files are made available during installation; click the Documentation link in the installer.
- CHM files are available after the product is installed; they are accessed in the Help system in the product.

The PDF files are also available from within your installed product's Help system.

Files are also installed to the \<AutoCAD Plant 3D>\Help folder.

## How do I install the Specs and Catalogs Editor without activating 3D Modeling?

You can install the AutoCAD Plant 3D Specs and Catalogs Editor without activating the 3D modeling license.

On the Product and User Information page, enter the serial number 0000-00000000. You can operate 3D modeling in trial mode for 30 days from the first time that you run 3D modeling.

License activation is not required to use the Specs and Catalogs editor.

## Licensing Issues

This section outlines common issues and their solutions with regards to software licenses and licensing your product(s).

## What is the difference between a stand-alone license and a network license?

Stand-alone licensed products are registered and activated to an individual workstation. While the software can be installed on multiple systems in your facility, the license only allows one system to be operational. If you need to run more systems, you need to purchase more stand-alone licensed products, or consider converting to network licenses.

Network licensed products rely on the Network License Manager to keep track of software licenses. The software can be installed and run on multiple systems, up to the maximum number of licenses you've purchased. The Network License Manager "checks out" licenses until they are all in use. No further systems can run the program until a license is "checked in." If you need to run more systems, you can purchase additional licenses for the Network License Manager to maintain.

Stand-alone licensed products are registered and activated to an individual workstation. While the software can be installed on multiple systems in your facility, the license only allows one system to be operational. If you need to run more systems, you need to purchase more stand-alone licensed products, or consider converting to *multi-seat stand-alone* licenses.

You cannot purchase a network licensed version of AutoCAD Plant 3D. However, a multi-seat stand-alone licensed version is available that does not rely upon servers to maintain licenses. Multi-seat stand-alone licensing means that each installation of your product uses a single serial number for registration and activation.

## **What is the benefit of using a network licensed version of the software?**

Network licensed products are recommended for large drafting/design facilities, classrooms, and lab environments. The main advantage is that you can install products on more systems than the number of licenses you have purchased (for example, purchasing 25 licenses but installing on 40 workstations). At any one time, products will run on the maximum number of systems for which you have licenses. This means you get a true floating license. If software needs to be run on more systems, additional licenses can be purchased.

Registration and activation occurs only once and the licenses are maintained on your Network License Server.

## **What is Internet Explorer used for?**

After installing your product, you can operate in *trial mode* for a given number of days. Whenever you launch the program, you are prompted to activate the software. When you choose to activate the software, Internet Explorer makes this process much faster. Once you entered your registration data and submit it to Autodesk, an activation code is returned and you are not prompted again during startup.

## Uninstall and Maintenance Issues

This section outlines common issues and their solutions with regards to adding and removing features, reinstalling or repairing your installation, and uninstalling products.

### When adding or removing features, how can I tell what features get installed by default?

To quickly see what gets installed during a typical, default installation, click the Restore Defaults button on the Add/Remove Features page.

P&ID Symbol Libraries	Contains P&ID symbol libraries conforming to PIP, ISO, DIN 2481, JIS, and ISA standards.
Specs and Catalogs Editor	Creates and modifies pipe spec files using industry standard parts catalogs.
CAD Standards	Contains tools for reviewing design files for compliance with your standards.
Database	Contains database access tools.
Dictionaries	Contains multi-language dictionaries.
Drawing Encryption	Allows you to use the Security Options dialog box to protect a drawing with a password.
Express Tools	Contains AutoCAD Plant 3D support tools and utilities (not supported by Autodesk).
Fonts	Contains AutoCAD Plant 3D fonts and TrueType fonts.
Autodesk Impression Toolbar	The Impression toolbar allows you to quickly export any view to Autodesk Impression for advanced line effects.
Autodesk Seek	Autodesk Seek. <b>NOTE</b> Seek will only be installed in the English version of AutoCAD Plant 3D.

New Features Workshop	Contains animated demos, exercises, and sample files to help users learn the new features.
License Transfer Utility	Allows users to transfer an Autodesk product license between computers. <b>NOTE</b> The utility will not be installed on unlocked versions of AutoCAD Plant 3D.
Migrate Custom Settings	Migrates custom settings and files from previous version of your product to this version.
Initial Setup	Allows users to set up their initial configuration of AutoCAD Plant 3D (online content, workspaces) based on their units system, industry, and commonly used task-based tools.
Reference Manager	Allows users to view and edit the paths of externally referenced files associated with a drawing.
Samples	Contains various feature sample files.
VBA Support	Contains Microsoft Visual Basic for Applications support files.

## Is it possible to change the installation folder when adding or removing features?

Once your product is installed, you cannot change the installation path from the Add/Remove Features page. Changing the path while adding features results in program corruption, so it is not an option.

## When should I reinstall the product instead of a repair?

You should reinstall your product if you accidentally delete or alter files that are required by the program. Missing or altered files adversely affect the performance of your product and cause error messages when you try to execute a command or find a file.

If an attempt to repair an installation fails, reinstalling is the next best option.

## **Do I need my original disc to reinstall my software?**

When performing a reinstall of the product, you do not need to have the original discs on hand. Installation data is cached locally on your drive and that data is reused when reinstalling.

## **After repairing my installation, is it possible to recover my settings?**

Custom settings can be exported and later re-imported to the same system in case you have to repair the installation of your program.

## **When I uninstall my software, what files are left on my system?**

If you uninstall the product, some files remain on your system such as files you created or edited (drawings or custom menus).

Your license file also stays on your workstation when you uninstall your product. If you reinstall on the same workstation, the license information remains valid and you do not have to reactivate the product.

# Index

3D video cards 5

## A

- activating programs 17
- administrator permission requirements
  - stand-alone installation 5
- Adobe Flash Player 5
- anti-virus software 6
- applications
  - anti-virus software 6
  - closing during installation 6
- Autodesk Design Review
  - installing 22
  - viewing DWFs 22

## B

- browsers 1, 3
- bundled products 8

## C

- computers 1
- customizing
  - installation 19

## D

- data loss 6
- Design Review
  - installing 22
  - viewing DWFs 22
- display adapters 5
- DWF files
  - Design Review 22
- DWFX files
  - Design Review 22

## F

- faxing registration information 18
- Flash Player 5

## G

- graphics cards 5

## H

- hard disks
  - system requirements 1
- hardware
  - installation requirements 1

## I

- installation
  - adding or removing features 19
  - Autodesk Design Review 22
  - Installation wizard 9
  - licensing 26
  - multiple or bundled products 8
  - preparing for 1
  - registration and activation 17
  - repairing 28
  - repairing damaged installations 20
  - serial numbers 6
  - stand-alone installation 1, 9–10
  - starting 18
  - system requirements 1
  - troubleshooting 23
  - typical 24
  - uninstalling 21, 28
- Installation wizard 9
- Internet
  - program registration and activation 17

Internet Explorer (Microsoft) 1, 3

## L

languages

- multi-language support 7
- selecting during installation 7

licenses

- issues 26

limited user rights 18

## M

mailing registration information 18

memory (RAM)

- system requirements 1

Microsoft Internet Explorer 1, 3

Microsoft Windows operating systems 1

monitors 1, 4

multi-language support 7

multi-product bundles 8

multi-seat stand-alone installations 1

## N

network adapters 5

## O

operating systems

- system requirements 1

## P

pointing devices

- system requirements 1

processors 1

Product Activation wizard 17

product keys 17

product manuals 26

## R

RAM

- system requirements 1

reinstalling programs 20, 28

removing

- uninstalling programs 21

repairing

- damaged installations 20, 28

## S

serial numbers

- stand-alone installation 6

service packs 1

shortcuts

- creating 18

software installation requirements 1

specs and catalogs editor 26

stand-alone installations

- process 10

- program registration and  
activation 17

- Quick Start 1

system requirements

- stand-alone installations 1

## T

trial mode 17

troubleshooting installation 23

## U

uninstalling programs 28

## V

video cards 1

video monitors 1, 4

virus software 6

## W

web browsers 1, 3

Windows operating systems

system requirements 1



