

Avid[®] FilmScribe[™]

User's Guide

Copyright and Disclaimer

Product specifications are subject to change without notice and do not represent a commitment on the part of Avid Technology, Inc.

The software described in this document is furnished under a license agreement. You can obtain a copy of that license by visiting Avid's Web site at www.avid.com. The terms of that license are also available in the product in the same directory as the software. The software may not be reverse assembled and may be used or copied only in accordance with the terms of the license agreement. It is against the law to copy the software on any medium except as specifically allowed in the license agreement.

Avid products or portions thereof are protected by one or more of the following United States Patents: 4,746,994; 4,970,663; 5,045,940; 5,077,604; 5,267,351; 5,309,528; 5,355,450; 5,396,594; 5,440,348; 5,452,378; 5,467,288; 5,513,375; 5,528,310; 5,557,423; 5,568,275; 5,577,190; 5,583,496; 5,584,006; 5,627,765; 5,634,020; 5,640,601; 5,644,364; 5,654,737; 5,724,605; 5,726,717; 5,729,673; 5,745,637; 5,752,029; 5,754,180; 5,754,851; 5,799,150; 5,812,216; 5,828,678; 5,842,014; 5,852,435; 6,061,758; 6,532,043; 6,546,190; 6,636,869; 6,747,705. Other patents are pending.

No part of this document may be reproduced or transmitted in any form or by any means, electronic or mechanical, including photocopying and recording, for any purpose without the express written permission of Avid Technology, Inc.

Copyright © 2004 Avid Technology, Inc. and its licensors. All rights reserved.

The following disclaimer is required by Apple Computer, Inc.

APPLE COMPUTER, INC. MAKES NO WARRANTIES WHATSOEVER, EITHER EXPRESS OR IMPLIED, REGARDING THIS PRODUCT, INCLUDING WARRANTIES WITH RESPECT TO ITS MERCHANTABILITY OR ITS FITNESS FOR ANY PARTICULAR PURPOSE. THE EXCLUSION OF IMPLIED WARRANTIES IS NOT PERMITTED BY SOME STATES. THE ABOVE EXCLUSION MAY NOT APPLY TO YOU. THIS WARRANTY PROVIDES YOU WITH SPECIFIC LEGAL RIGHTS. THERE MAY BE OTHER RIGHTS THAT YOU MAY HAVE WHICH VARY FROM STATE TO STATE.

The following disclaimer is required by Sam Leffler and Silicon Graphics, Inc. for the use of their TIFF library:

Copyright © 1988–1997 Sam Leffler
Copyright © 1991–1997 Silicon Graphics, Inc.

Permission to use, copy, modify, distribute, and sell this software [i.e., the TIFF library] and its documentation for any purpose is hereby granted without fee, provided that (i) the above copyright notices and this permission notice appear in all copies of the software and related documentation, and (ii) the names of Sam Leffler and Silicon Graphics may not be used in any advertising or publicity relating to the software without the specific, prior written permission of Sam Leffler and Silicon Graphics.

THE SOFTWARE IS PROVIDED "AS-IS" AND WITHOUT WARRANTY OF ANY KIND, EXPRESS, IMPLIED OR OTHERWISE, INCLUDING WITHOUT LIMITATION, ANY WARRANTY OF MERCHANTABILITY OR FITNESS FOR A PARTICULAR PURPOSE.

IN NO EVENT SHALL SAM LEFFLER OR SILICON GRAPHICS BE LIABLE FOR ANY SPECIAL, INCIDENTAL, INDIRECT OR CONSEQUENTIAL DAMAGES OF ANY KIND, OR ANY DAMAGES WHATSOEVER RESULTING FROM LOSS OF USE, DATA OR PROFITS, WHETHER OR NOT ADVISED OF THE POSSIBILITY OF DAMAGE, AND ON ANY THEORY OF LIABILITY, ARISING OUT OF OR IN CONNECTION WITH THE USE OR PERFORMANCE OF THIS SOFTWARE.

The following disclaimer is required by the Independent JPEG Group:

Portions of this software are based on work of the Independent JPEG Group.

The following disclaimer is required by Paradigm Matrix:

Portions of this software licensed from Paradigm Matrix.

The following disclaimer is required by Ray Sauers Associates, Inc.:

"Install-It" is licensed from Ray Sauers Associates, Inc. End-User is prohibited from taking any action to derive a source code equivalent of "Install-It," including by reverse assembly or reverse compilation. Ray Sauers Associates, Inc. shall in no event be liable for any damages resulting from reseller's failure to perform reseller's obligation; or any damages arising from use or operation of reseller's products or the software; or any other damages, including but not limited to, incidental, direct, indirect, special or

consequential Damages including lost profits, or damages resulting from loss of use or inability to use reseller's products or the software for any reason including copyright or patent infringement, or lost data, even if Ray Sauers Associates has been advised, knew or should have known of the possibility of such damages.

The following disclaimer is required by Videomeia, Inc.:

"Videomeia, Inc. makes no warranties whatsoever, either express or implied, regarding this product, including warranties with respect to its merchantability or its fitness for any particular purpose."

"This software contains V-LAN ver. 3.0 Command Protocols which communicate with V-LAN ver. 3.0 products developed by Videomeia, Inc. and V-LAN ver. 3.0 compatible products developed by third parties under license from Videomeia, Inc. Use of this software will allow "frame accurate" editing control of applicable videotape recorder decks, videodisc recorders/players and the like."

The following disclaimer is required by Altura Software, Inc. for the use of its Mac2Win software and Sample Source Code:

©1993–1998 Altura Software, Inc.

The following disclaimer is required by 3Prong.com Inc.:

Certain waveform and vector monitoring capabilities are provided under a license from 3Prong.com Inc.

Attn. Government User(s). Restricted Rights Legend

U.S. GOVERNMENT RESTRICTED RIGHTS. This Software and its documentation are "commercial computer software" or "commercial computer software documentation." In the event that such Software or documentation is acquired by or on behalf of a unit or agency of the U.S. Government, all rights with respect to this Software and documentation are subject to the terms of the License Agreement, pursuant to FAR §12.212(a) and/or DFARS §227.7202-1(a), as applicable.

Trademarks

888 I/O, Adrenaline, AirPlay, AirSPACE, AirSPACE HD, AniMatte, AudioSuite, AudioVision, AutoSync, Avid, Avid DNA, AVIDdrive, AVIDdrive Towers, Avid Mojo, AvidNet, AvidNetwork, AVIDstripe, Avid Unity, Avid Xpress, AVOption, AVX, CamCutter, ChromaCurve, ChromaWheel, DAE, D-Fi, D-fx, Digidesign, Digidesign Audio Engine, Digidesign Intelligent Noise Reduction, DigiDrive, Digital Nonlinear Accelerator, DigiTranslator, DINR, D-Verb, Equinox, ExpertRender, FieldPak, Film Composer, FilmScribe, FluidMotion, HIIP, HyperSPACE, HyperSPACE HDCAM, IllusionFX, Image Independence, Intraframe, iS9, iS18, iS23, iS36, Lo-Fi, Magic Mask, make manage move | media, Marquee, Matador, Maxim, MCXpress, Media Composer, MediaDock, MediaDock Shuttle, Media Fusion, Media Illusion, MediaLog, Media Reader, Media Recorder, MEDIArray, MediaShare, Meridien, MetaSync, NaturalMatch, Nearchive, NetReview, NewsCutter, Nitris, OMF, OMF Interchange, OMM, Open Media Framework, Open Media Management, ProEncode, Pro Tools, QuietDrive, Recti-Fi, RetroLoop, rS9, rS18, Sci-Fi, Softimage, Sound Designer II, SPACE, SPACESHift, Symphony, the Avid|DS logo, Trilligent, UnityRAID, Vari-Fi, Video Slave Driver, VideoSPACE, and Xdeck are either registered trademarks or trademarks of Avid Technology, Inc. in the United States and/or other countries.

iNEWS, iNEWS ControlAir, and Media Browse are trademarks of iNews, LLC.

All other trademarks contained herein are the property of their respective owners.

Footage

Arri — Courtesy of Arri/Fauer — John Fauer, Inc.
Bell South "Anticipation" — Courtesy of Two Headed Monster — Tucker/Wayne Atlanta/GMS.
Canyonlands — Courtesy of the National Park Service/Department of the Interior.
Eco Challenge British Columbia — Courtesy of Eco Challenge Lifestyles, Inc., All Rights Reserved.
Eco Challenge Morocco — Courtesy of Discovery Communications, Inc.
It's Shuttletime — Courtesy of BCP & Canadian Airlines.
Nestlé Coffee Crisp — Courtesy of MacLaren McCann Canada.
Saturn "Calvin Egg" — Courtesy of Cossette Communications.
"Tigers: Tracking a Legend" — Courtesy of www.wildlifeworlds.com, Carol Amore, Executive Producer.
Windhorse — Courtesy of Paul Wagner Productions.

Arizona Images — KNTV Production — Courtesy of Granite Broadcasting, Inc., Editor/Producer Bryan Foote.
Canyonlands — Courtesy of the National Park Service/Department of the Interior.
Tornados + Belle Isle footage — Courtesy of KWTW News 9.

WCAU Fire Story — Courtesy of NBC-10, Philadelphia, PA.
Women in Sports – Paragliding — Courtesy of Legendary Entertainment, Inc.

GOT FOOTAGE?

Editors — Filmmakers — Special Effects Artists — Game Developers — Animators — Educators —
Broadcasters — **Content creators of every genre** — Just finished an incredible project and want to
share it with the world?

Send us your reels and we may use your footage in our show reel or demo!*

For a copy of our release and Avid's mailing address, go to www.avid.com/footage.

*Note: Avid cannot guarantee the use of materials submitted.

Avid FilmScribe User's Guide • Part 0130-06784-01 • December 2004

Contents

	Using This Guide	9
	Symbols and Conventions	9
	If You Need Help	11
	How to Order Documentation	11
	Avid Educational Services	11
Chapter 1	Understanding Film Lists	13
	Film List Concepts	13
	Cut Lists Versus Change Lists	14
	Frame Reference Numbers	15
	Understanding Optional Lists	17
	Assemble Lists	18
	A-Roll Versus A/B-Roll Conforming	18
	Optical Lists	19
	Dupe Lists	21
	Pull Lists	23
	Change Pull Lists and Change Discard Lists	23
	Scene Pull Lists	24
	Optical Scene Pull Lists	24
	Using Icons in Lists to Represent Edits	25
Chapter 2	Working with FilmScribe	29
	FilmScribe Workflow	29
	Starting and Quitting FilmScribe	30
	Understanding the FilmScribe Interface	31

Menu Bar	31
Menus That Always Appear	31
Menus That Appear for Specific Types of Windows	32
Window Types	33
Using Help and Viewing the Readme File	34
Working with Bins	34
Opening and Closing Bins	34
Understanding the Bin Window	35
Sorting Items in Bins	36
Working with the Cut List Tool and the Change List Tool	36
Opening and Closing the Tools	36
Understanding the Cut List Tool	37
Understanding the Change List Tool	39
Getting Sequences	40
Dragging Sequences from Bins	40
Using the Sequence Menu	40
Clearing Sequences	42
Selecting Tracks	42
Renaming the List	43
Using the Options Pane	43
Selecting Options	44
Copying Options Between List Types	45
Changing the Options	46
Using Settings to Save, Recall, and Remove Options	46
Previewing the List	48
Working in the List Window	49
Opening a List Window	49
Understanding the List Window Status Bar	50
Expanding and Collapsing Lists	50
Using the List Summary Option	51

	Editing and Formatting Lists	51
	Changing the Appearance of Text in Generated Lists	53
	Viewing Sequences as QuickTime Movies	53
	Opening Movie Sequences	54
	Controlling the Play of Movie Sequences	54
	Saving, Opening, and Printing Lists	56
	Saving Lists	56
	Opening a Saved List	57
	Printing Lists	57
	Using the WebLists Template	57
	Using the TabbedLists Template	62
	Working with Multiple Cuts and Reels	62
	Creating a Cut List for Two or More Sequences	62
	Creating Change Lists Across Multiple Reels	63
	Using Reel Numbers	63
	Using Preview Code	64
	Dupe Checking Across Multiple Reels	66
	Using the Matchback Option	66
	Understanding Matchback	66
	Generating a Cut List with Matchback	68
Chapter 3	Film List Options	69
	Cut List Global Options	69
	Cut List Options Common to All Lists	74
	List-Specific Cut List Options	77
	Assemble Lists	78
	Optical Lists	79
	Dupe Lists	79
	Pull Lists	80
	Change List Global Options	81
	Change List Options Common to All Lists	82

	List-Specific Change List Options	82
	Change List	82
	Change Pull and Change Discard Lists	83
	Optical List	83
Appendix A	Preparing Sequences for FilmScribe	85
	Entering Film Information	85
	Preparing Sequences	86
	Generating the First Cut List	86
	Generating a Change List	87
	Comparing and Combining Cuts and Reels	87
	Generating a Final Cut List	87
	Tracking Frames Based on File Names	88
	Preparing QuickTime Movies	88
	Preparing Sequences for Export	89
	Exporting QuickTime Files	89
	Guidelines for File Naming	89
	Guidelines for File Location	90
	Glossary	91
	Index	95

Using This Guide

Avid® FilmScribe™ is an application that allows you to create, modify, and manage cut lists and change lists. FilmScribe lists can be used to prepare various postproduction elements of a film project, including work prints and final cuts. The FilmScribe application opens bins created on Avid editing systems and generates lists from sequences in those bins that contain the appropriate film information. FilmScribe is a standalone application: it can open bins and generate lists without an Avid editing system being open or even present on your computer.

This manual is intended for FilmScribe users from beginning to advanced levels. Typically, these users are editors or assistants who are using an Avid editing system to edit a film project and who need to create precise lists to guide the preparation of film prints and cuts.




The documentation describes the features and hardware of all models. Therefore, your system might not contain certain features and hardware that are covered in the documentation.

Symbols and Conventions

Avid documentation uses the following symbols and conventions:

Symbol or Convention	Meaning or Action
	A note provides important related information, reminders, recommendations, and strong suggestions.
	A caution means that a specific action you take could cause harm to your computer or cause you to lose data.

Symbol or Convention	Meaning or Action
	A warning describes an action that could cause you physical harm. Follow the guidelines in this document or on the unit itself when handling electrical equipment.
>	This symbol indicates menu commands (and subcommands) in the order you select them. For example, File > Import means to open the File menu and then select the Import command.
▶	This symbol indicates a single-step procedure. Multiple arrows in a list indicate that you perform one of the actions listed.
⌘	This symbol represents the Apple or Command key. Press and hold the Command key and another key to perform a keyboard shortcut.
Margin tips	In the margin, you will find tips that help you perform tasks more easily and efficiently.
(Windows), (Windows only), (Macintosh), or (Macintosh only)	This text indicates that the information applies only to the specified operating system, either Windows XP or Macintosh OS X.
<i>Italic font</i>	Italic font is used to emphasize certain words and to indicate variables.
Courier Bold font	Courier Bold font identifies text that you type.
Ctrl+ <i>key</i> or <i>mouse action</i> ⌘+ <i>key</i> or <i>mouse action</i>	Press and hold the first key while you press the last key or perform the mouse action. For example, ⌘+Option+C or Ctrl+drag.

If You Need Help

If you are having trouble using this Avid application:

1. Retry the action, carefully following the instructions given for that task in this guide. It is especially important to check each step of your workflow.
2. Check the ReadMe for the latest information that might have become available *after* the documentation was published. The ReadMe is supplied in your Avid application folder. The ReadMe file is also available in the Help.



The ReadMe file is also available on the Avid Knowledge Base.

3. Check the documentation that came with your Avid application or your hardware for maintenance or hardware-related issues.
4. Visit the online Knowledge Base at www.avid.com/onlinesupport. Online services are available 24 hours per day, 7 days per week. Search this online Knowledge Base to find answers, to view error messages, to access troubleshooting tips, to download updates, and to read/join online message-board discussions.
5. For Technical Support, please call 800-800-AVID (800-800-2843).
For Broadcast On-Air Sites and Call Letter Stations, call 800-NEWSDNG (800-639-7364).

How to Order Documentation

To order additional copies of this documentation from within the United States, call Avid Sales at 800-949-AVID (800-949-2843). If you are placing an order from outside the United States, contact your local Avid representative.

Avid Educational Services

For information on courses/schedules, training centers, certifications, courseware, and books, please visit www.avid.com/training or call Avid Sales at 800-949-AVID (800-949-2843).

Using This Guide

Chapter 1

Understanding Film Lists

At various stages of postproduction, you need to generate lists that can be used to prepare conformed cut previews, optical effects, audio tracks, and eventually the final cut. FilmScribe provides tools for creating frame-accurate lists that can be used to conform a work print, a film negative, audio tracks, or videotape transfers.

This chapter provides an overview of the situations in which you can use cut lists and change lists. It also describes specific types of optional lists you can generate.

This chapter includes the following major sections:

- [Film List Concepts](#)
- [Cut Lists Versus Change Lists](#)
- [Frame Reference Numbers](#)
- [Understanding Optional Lists](#)
- [Using Icons in Lists to Represent Edits](#)

Film List Concepts

The Cut List and Change List tools allow you to generate detailed information for *conforming* the *work print*, the negative, Visual Effects (VFX) information, or Digital Picture Exchange (DPX) file-based workflows of a film project in various contexts:

- For screening of *dailies* or selects, you can generate scene and pull lists that the lab or an assistant editor can use to prepare a work print.

- For screenings of a current cut, you can generate *ink number* lists that the assistant editor can use for conforming a work print and *magnetic track*.
- For developing the final sound tracks, you can generate audio change lists that the sound department can use for editing and mixing the original audio source reels.
- For preparing optical effects, you can generate lists that the optical house can use for comparing versions and generating optical effects.
- To compare different versions of a *sequence* or to determine a project's reels, you can generate lists containing information about multiple sequences that the assistant editor can use to combine reels or bring conformed work prints up-to-date.
- For the final cut, you can generate *key number* lists that the negative cutter can use for conforming the negative.
- At all stages, you can also use your Avid editing system to record a *digital cut* of the sequence or a digital cut of the audio tracks for use in screening or as an aid in conforming the cuts.

The following section describes the two main types of lists you can generate in FilmScribe.

Cut Lists Versus Change Lists

Film cut lists and change lists provide breakdowns of exactly which frames should be cut from the work print or original negative. Unlike video edit decision lists (EDLs), which must conform to the specifications and limitations of various edit controllers, film lists are read by assistant editors or negative cutters. Avid's cut lists also include industry-standard optical list information.

Cut lists and change lists serve two basic purposes:

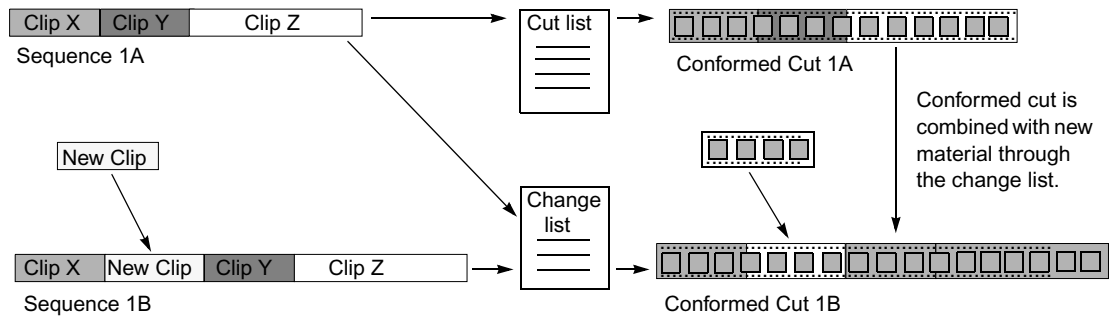
- A cut list can be generated the first time to conform a work print, negative, sound track, or optical effect to match the sequence.
- A change list is generated to simplify the process of updating conformed cuts to match and compare changes in versions of the sequence or sequences.

In FilmScribe, each cut list uses the existing frame reference numbers contained in the bins to represent edit details in a sequence. Change lists use the same reference numbers to compare two or more versions of a sequence or a set of sequences to show only the changes necessary to bring previously conformed cuts up to date, which is useful for comparing versions of edited sequences.

When you are comparing a new sequence with a previous version of the same sequence, the change list indicates the following categories of sequence changes:

- Insertions for new material to be added
- Deletions of old material no longer needed
- Trims to be made to the heads, tails, or middles of the edits
- Moves that consist of a matched pair of deletions and insertions of an entire shot or shots
- Optional information that details which portions of the sequence should not be altered

The following illustration compares cut lists and change lists.



Frame Reference Numbers

You can generate all the standard frame-reference information required for an assistant editor or negative cutter to conform a cut, provided that information has been entered in the bin.



If you did not log a category of data during logging and capturing, you can add optional information to the bin in your Avid editing system at any time before working with the list in FilmScribe. You can also add information using Avid MediaLog™. For example, if you add ink numbers in the Ink Number column after editing, the system includes these in the lists.

In addition, FilmScribe can display unique information not normally included in a conventional cut list. For example, you can include the following information in a list:

- **Frame images.** These are the thumbnail images of the initial frames of the clips in your sequence. They appear in the list only if you have:
 - The Frame Images option selected in the Cut List Tool window
 - QuickTime® software installed
 - QuickTime files of your sequences

You can double-click the thumbnail image to open and play it in QuickTime.

For information about Cut List options, see [“Understanding the Cut List Tool” on page 37](#). For information about QuickTime movies, see [“Viewing Sequences as QuickTime Movies” on page 53](#) and [“Preparing QuickTime Movies” on page 88](#).

- **Comments.** These are any added comments you associated with a clip in the sequence during editing. They appear in the assemble and optical lists only.
- **Locator comments.** These are any comments you associated with a particular clip using locators. They appear in the assemble and optical lists only.

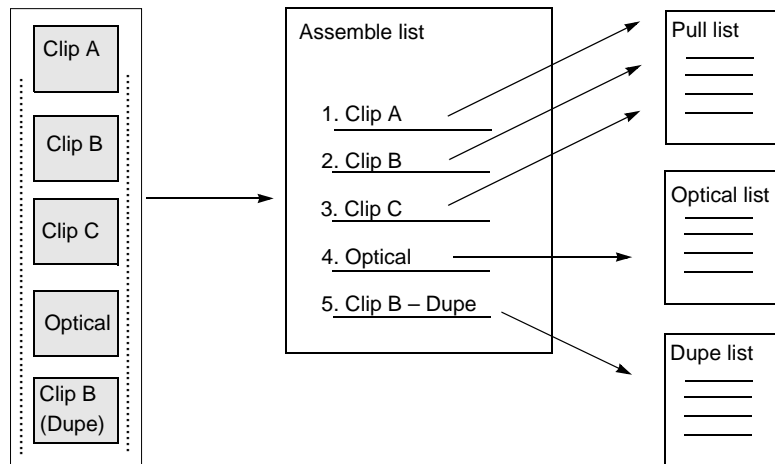
Comments and locators can be very useful. For example, you can use locators to mark where music begins, or you can provide specific color-correction instructions for a frame or clip and print these notes as part of your list.

Understanding Optional Lists

Both cut lists and change lists include the use of optional lists that communicate specific tasks to the assistant editor, the negative cutter, the sound department, or the optical house. For example, these lists can instruct the facility to:

- Pull or assemble cuts, scenes, or takes in a particular order
- Remove takes that are no longer needed
- Layer and composite optical effects
- Check for duplicate frames and jump cuts
- Print or flag the required duplicate negative

The heart of a cut list or change list is the *assemble list*, which provides a breakdown of the sequence into all its required parts. These might include scenes and takes, optical effects, and duplicate frames, all of which you can compile in additional, supporting sublists. You can also generate pull lists, which literally display material to be pulled by the assistant editor. The following illustration shows an assemble list.



The following sections describe each type of optional list.

Assemble Lists

The assemble list shows the order in which a sequence’s clips, optical effects, or standard dissolves and fades are assembled from start to finish in the edited sequence. The assemble list also flags duplicate frames. In addition, you can choose to display optional settings and information categories such as camera rolls, sound rolls, lab rolls, comments, or locators. The types of numbers used for tracking can be key numbers and ink numbers. These numbers are displayed as a user-selected footage or frame count.

Assemble List
Sequence: **Telephone poles**

Events: 4
Dupes: 0
Opticals: 2
Tracks: Picture 1

Picture Conform Method: A Roll (Single Strand)
Total Footage: 465
LFOA: 465
Total Time: 00:00:19:10

Conforms: Running Footage
Durat
Master TC

Sound Conform Method: Auxiliary Ink

Event	Dupe Group	Footage	Master TC TC1 (Start)	Duration	Key Number	TC1 (Start)	Lab Roll	Cam Roll	Clip
1		0000+00.1 0007+12.2	00:00:30:00 00:00:36:21	162	Opt 1-0000+00 Opt 1-0010+01	Optical #1			
2		0007+13.2 0015+17.1	00:00:36:22 00:00:44:02	176	Opt 2-0000+00 Opt 2-0010+15	Optical #2			
Matchback shortened the tail of the Clip() by 1 frame.									
3		0015+18.1 0019+01.2	00:00:44:03 00:00:46:28	69 00:00:02:25					Driver s
4		0019+02.2 0021+16.1	00:00:46:29 00:00:49:10	58 00:00:02:11					CU ha

A-Roll Versus A/B-Roll Conforming

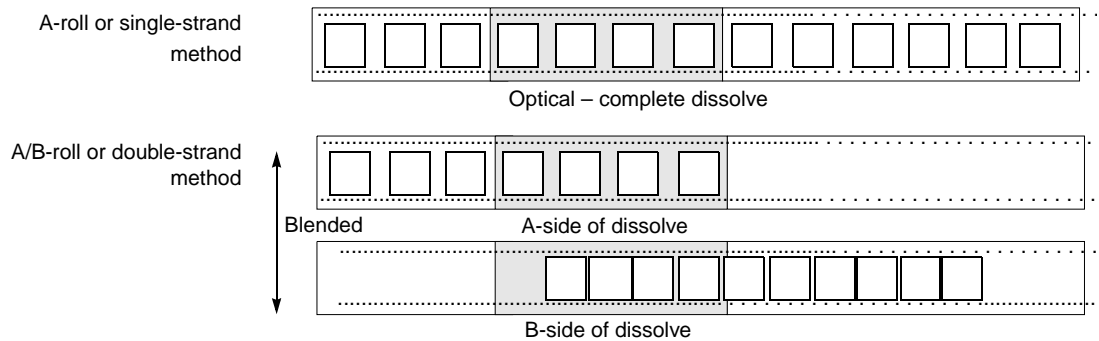
FilmScribe assemble lists can represent either of the two conforming methods: *A-roll* or *A/B-roll*. Before generating a cut list or change list containing an assemble list, you select one of these methods based on the following criteria:

- **A-roll or *single-strand*.** Used primarily for 35mm film editing, this method requires the compositing of all multilayer effects into a single layer (including laboratory-standard dissolves and fades) before assembly.

A-roll assemble lists contain information about all single-layer, straight-cut events. All other information about the sequence is described in the optical list.

- **A/B-roll or double-strand.** Used primarily for 16mm film editing, this method limits the amount of optical work by managing most standard dissolves and fades using two strands of film. A/B-roll assemble lists contain information about single-layer, straight-cut events as well as laboratory-standard dissolves and fades. All other information about the sequence is described in the optical list.

The following illustration shows the two types of conforming methods.



A laboratory-standard dissolve or fade is a multiple of 12 or 16 frames and is between 12 and 96 frames long. All other transition effects, titles, graphics, dissolves, and fades of nonstandard length appear in the optical list.



Sound lists are always displayed as A/B-roll and describe dissolves of any length.

Optical Lists

Optical lists specify the source material required to create special effects and any edit event other than a straight cut, such as a dissolve or fade that must be sent to an optical house for creation. The optical list presents each optical event in the order in which it appears in the sequence and includes specifications based on either ink numbers, Aux ink numbers, or key numbers.

Part of a sample optical list

OPTICAL #1	Assemble Event #1	total length: 27+08						
Optical Footage	Sequence Footage	Description	Length	+-- & side First/Last Key	Address TC	Cam Roll		
1.	0	0	Normal	20+07	(NO EDGE NUMBERS)	01:09:35:19		
	226	226			(NO EDGE NUMBERS)	01:09:49:06		
2.	226	226	Unknown Trans. Effect	0+12	(NO EDGE NUMBERS)	01:09:49:07		
	237	237				01:09:49:21		

Types of Effects Supported by Optical Lists

FilmScribe optical lists support the following effects and combinations of effects:

- All standard- and nonstandard-length transition effects, such as dissolves and fades
- Standard blend effects, such as superimpositions, title effects, matte key effects, luma keys, and chroma keys
- Single-layer segment effect blowups, including moving blowups and resize flips and flops
- Other standard film effects such as flips, flops, flip-flops, and motion effects
- Combinations of single-layer effects, such as a flipped motion effect
- Tracking of keyframed previsualization markers
- Clone and other paint effects

- Combinations of single-layer effects with blend effects, such as a key effect applied to a motion effect
- Transition and blend effects that appear on two separate picture tracks
- Overlapping transition effects on two separate picture tracks



FilmScribe cut lists do not describe standard film masks that you apply to a clip or sequence to view a different aspect ratio. Standard masks are usually applied only after the conforming of a work print or negative. These masks are not effects and are used only to represent the cutoff of projected print in the theatre. Custom masks, which are effects, are described in the optical list.

Dupe Lists

Dupe lists refer to all the source material that the lab must duplicate before conforming the film negative. Additionally, dupe lists display unintended duplicate frames you might have edited into the sequence.



To avoid including unnecessary dupes in your lists, use the Dupe Detection function during editing. Dupe handle lengths are set in the Timeline Settings dialog box in Avid editing systems. For more information, see the Help for your Avid editing system.

The listed duplicate frames are organized within sets of dupe groups. Each dupe group set provides the IN and OUT points of two or more entries that are duplicates of each other in related sections of the sequence.

A sample dupe list

Dupe List
Sequence: **Swimming**

Sequence Movie

Dupe Group: 1

Event	Footage	Master TC Start	Duration	Key Number	Start
1	0056+15.3 0064+16.2	00;01;20;13 00;01;27;18	00;00;07;05	173	01:17:54:24 01:18:01:29
2	0130+20.2 0139+00.2	00;02;26;15 00;02;33;20	00;00;07;05	173	01:17:54:24 01:18:01:29

Dupe Group: 2



Event	Footage	Master TC Start	Duration	Key Number	Start
1	0024+14.1 0029+04.3	00;00;51;28 00;00;55;28	00;00;04;00	97	01:01:09:25 01:01:13:25
2	0098+20.3	00;01;58;00		97	01:01:09:25

Dupes are also indicated in the assemble and pull lists by default, regardless of whether or not you choose to generate a separate dupe list.

Pull Lists

Pull lists display selected elements of the sequence in various sort orders. The pull lists show dupes but not comments or locators.

A sample pull list

Cut List Preview							
List is current							
Pull List							
Greece sequence		5 entries,		handles = -1			
Picture 1		1 dupe					
		0 opticals					
Asm #	Footage	Record TC	Duration	First/Last Key	Address TC	Lab Roll	Cam Roll
							
	Dupe Set #1						
1	0	01:00:00:00	4+06	(NO EDGE NUMBERS)	15:46:21:00		
	69	01:00:02:26			15:46:22:26		
							
	Dupe Set #1						
3	219	01:00:09:04	7+11	(NO EDGE NUMBERS)	15:46:23:27		
	341	01:00:14:06			15:46:28:29		
4	342	01:00:14:07	48+04	(NO EDGE NUMBERS)	09:08:40:00		
	1113	01:00:46:11			09:09:12:04		

Change Pull Lists and Change Discard Lists

When you are generating a change list, the Change List tool provides two additional options: the change pull list and the change discard list.

- The change pull list is similar to the pull list, except that it lists only new clips or effects that you need to insert into the updated cut.
- The change discard list displays each clip that has been removed from the updated sequence.

Scene Pull Lists

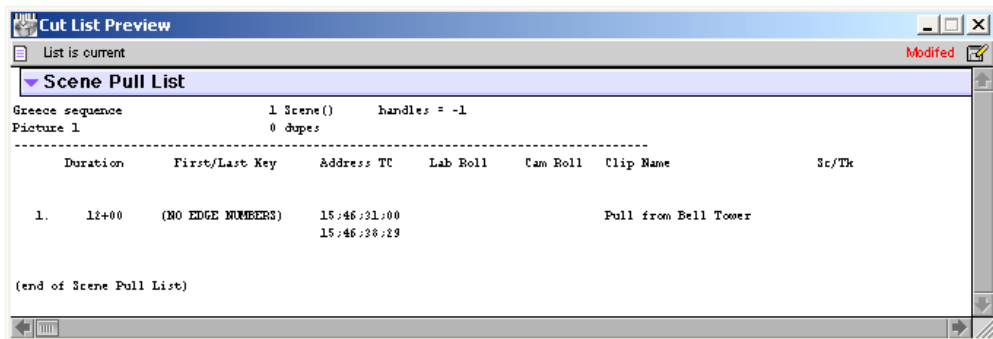
Scene pull lists show the cuts arranged in the following sort order:

- Scene and take
- Reel numbers

You can customize the sort order in the Options pane. For more information, see [“Pull Lists” on page 80](#).

The scene pull list contains one entry for each scene and take that was referenced in the assemble list, as entered in the Sc/Tk column of the bins. Each entry displays the entire length of the take as defined by the clip from which it came. The Sc/Tk column must be filled in within the bin to generate a scene pull list.

A sample scene pull list

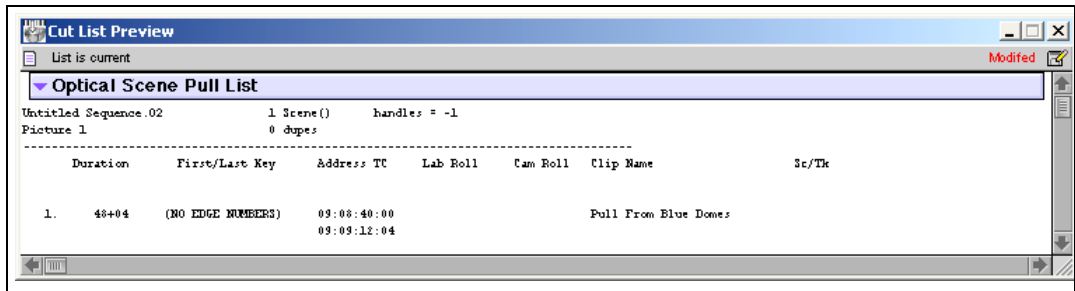


Optical Scene Pull Lists

Optical scene pull lists show all the source material required to re-create the optical effects in the sequence. The optical scene pull list contains the same information as a scene pull list except that:

- Each optical is listed per scene.
- Takes required to re-create the optical are listed by scene number.

A sample optical scene pull list



Using Icons in Lists to Represent Edits

Icons that graphically represent edit events can appear in your lists.



These icons do not appear in WebLists or TabbedLists.

To display the icons:

- ▶ Select the Icons option in the Cut List or Change List tool.

Chapter 1 Understanding Film Lists

Cut List

Cut List icon

4-3 Sequence #/fx
Picture 1

10 events handles = 0
1 dupe total footage: 75+00
2 opticals total time: 00:00:47:24

	Head	Footage	Duration	First/Last Key	First/Last Ink	Sc/Tk
1.		0 119	7+08	KL 76 2220-4746&00 4751&19	KL762220-4745+20 4748+19	4/3
	Dupe Set #1					
2.		120 239	7+08	KL 76 2220-4773&00 4778&19	KL762220-4759+00 4761+39	4/3
3.		240 359	7+08	KL 76 2220-4760&00 4765&19	KL762220-4752+20 4755+19	4/3

Change List

Change List icon

▼ Change List

Untitled Sequence.01 11 events Old Duration 75+00
Picture 1 1 insertion New Duration 15+09
- Reel 10 deletions Total Change - 58+07
0 moves

All Counts Are Inclusive (inside/inside)

	At This Footage	For This Length	Do This	First/Last Ink	Sc/Tk	Total Change
1.		0 - 7+08	Delete Shot	KL762220-4745+20	4/3	- 7+08
		Tail	Insert Shot	KL762220-4748+19		
2.		0 - 7+08	Delete Shot	KL762220-4759+00	4/3	- 15+00

The following tables list the icons available.

Cut List and Change List Available Icons

Cut List and Change List



Fade Out



Fade In



Dupe



Dissolve



Optical



Optical Media



Media Offline

Change List-Only Available Icons

Change List Only



Delete




Insert



Insert Head

Change List-Only Available Icons (Continued)

Change List Only

 Insert Tail

 Delete Tail

 Delete Head

Bad Clip icon



The Bad Clip icon indicates clips that have discontinuity of edgecode. Discontinuities occur normally between scenes or takes in each KEM roll. When you create scene or take subclips from a captured KEM roll master clip, however, each subclip normally includes its own continuous edge code. If a subclip or edited portion of a KEM roll master clip accidentally includes a break in edge code between takes, then the Bad Clip icon appears in the lists.



All list information following the Bad Clip icon is unreliable. If the Bad Clip icon appears in the lists, check all clips for the edge code information, adjust the errors, and generate new lists.

Chapter 2

Working with FilmScribe

This chapter explains the main elements of FilmScribe and procedures for working with the application.

- [FilmScribe Workflow](#)
- [Starting and Quitting FilmScribe](#)
- [Understanding the FilmScribe Interface](#)
- [Working with Bins](#)
- [Working with the Cut List Tool and the Change List Tool](#)
- [Working in the List Window](#)
- [Viewing Sequences as QuickTime Movies](#)
- [Saving, Opening, and Printing Lists](#)
- [Using the WebLists Template](#)
- [Using the TabbedLists Template](#)
- [Working with Multiple Cuts and Reels](#)
- [Using the Matchback Option](#)

FilmScribe Workflow

When you use FilmScribe to prepare a list, your work generally involves the same basic flow. The basic workflow contains the following steps:

1. Open the bin that contains the sequence with which you want to work.
2. Open the Cut List tool or the Change List tool and bring the sequence into the tool from the bin.

3. Select options in the tool window to customize the list, or apply an existing group of option settings.
4. Generate the list and view it in the List window or Web browser (for a WebLists template).
5. Save and print the list.

Under certain circumstances, you might also:

- Import the file into an application such as Microsoft Excel or FileMaker (for lists generated from the TabbedLists template).
- Reopen a saved list.
- Work with more than one bin or sequence at the same time.
- View the sequence in the Movie window.

Starting and Quitting FilmScribe

You can start FilmScribe as a standalone application or, if you have a Media Composer Adrenaline system, you can start it from within your Avid application.

(Windows) To start FilmScribe:

- ▶ Click the Start button, and select Programs > Avid > Avid FilmScribe.


(Macintosh) To start FilmScribe:

- ▶ Double-click the FilmScribe icon on the desktop.
- ▶ Locate the FilmScribe application folder in the Applications folder, and then double-click the FilmScribe icon.

To start FilmScribe from within your Avid Media Composer Adrenaline application:

- ▶ Select Output > FilmScribe.
FilmScribe opens as the active window.

(Windows) To quit FilmScribe, do one of the following:

- ▶ Select File > Quit.
- ▶  Click the Close button in the upper right corner of the main application window.

(Macintosh) To quit FilmScribe:

- ▶ Select File > Quit.

Understanding the FilmScribe Interface

The FilmScribe interface has the following main elements:

- Menu Bar
- Windows
- Help System

Menu Bar

The FilmScribe menu bar displays a series of menus that you can use to control the functions of the application.

FilmScribe has two groups of menus — those that always appear and those that appear only when a specific window type is active.

Menus That Always Appear

The following table lists the general menus that always appear on the menu bar and describes the commands in each menu.

General Menus

Menu	Description
File	Provides commands for opening and closing bins and tools, saving and printing lists, and quitting the application.
Edit	Provides commands for undoing and redoing the most recent user action and for basic editing functions.
Font, Style, Size, Color	Provides commands for changing the appearance of the text in a cut list or a change list. You cannot change these parameters in Weblists or TabbedLists.
Windows	Provides commands for positioning the status bar and for navigating the open windows.

General Menus (Continued)

Menu	Description
Help	Provides commands for accessing the Help system.

Menus That Appear for Specific Types of Windows

When you start FilmScribe, the menus listed in [“General Menus” on page 31](#) are the only menus that appear. However, once you open a window, a new menu appears to the left of the Windows menu. The menu that opens is specific to the type of window that is active. For more information on window types, see [“Window Types” on page 33](#).

The following table lists the window-specific menus and describes the commands in each menu.

Window-Specific Menus

Menu	Description
Sequence	Appears when a bin is the active window and provides commands for opening sequences in the Cut List tool or the Change List tool. You can also open the Sequence menu as a pop-up menu within a bin by right-clicking (Windows) or Ctrl+clicking (Macintosh) a sequence.
CutList	Appears when the Cut List tool is the active window and provides commands for clearing sequences in the tool and for generating and previewing a list.
ChangeList	Appears when the Change List tool is the active window and provides commands for clearing sequences in the tool and for generating and previewing a list.
List	Appears when the List window is the active window and provides commands for expanding and collapsing the list view.
Movie	Appears when the Movie window is the active window and provides commands that control the way the movie plays and the size of the window.

Window Types

You work with sequences, list options, and lists in different windows within FilmScribe. The following table lists these window types and describes the tasks you can perform in each type.

Window Types

Window Type	Description
Bin	Open any bin from an Avid editing system, sort the sequences in the bin, and select sequences to move into the Cut List tool and the Change List tool. For more information on bins, see “Working with Bins” on page 34 .
Cut List Tool and Change List Tool	Prepare and generate cut lists in the Cut List Tool window and change lists in the Change List Tool window. Select which kinds of lists to generate, which sequences to generate from, and which tracks to include in your lists. Set options that define what kind of information goes into your lists. You can also work with option settings in the tool windows. For more information on the Cut List and Change List tools, see “Working with the Cut List Tool and the Change List Tool” on page 36 . For more information on settings, see “Using Settings to Save, Recall, and Remove Options” on page 46 .
List	Preview the lists that you have generated or open previously saved lists. For more information on the List window, see “Working in the List Window” on page 49 .
Movie	View QuickTime movie versions of the sequences with which you work. This feature is available only when QuickTime is installed and you have created a QuickTime movie version of your sequence. For more information, see “Viewing Sequences as QuickTime Movies” on page 53 .

Using Help and Viewing the Readme File

The Help provides all the information contained in the *Avid FilmScribe User's Guide*, and operates in a Web browser. To open the Help, select Help > Help or Help > Shortcuts in the Avid FilmScribe application. For information about using the Help, open the Using Help topic in the Help Contents.

The ReadMe file contains any important information that was discovered after the Help and manual were updated. To view the Readme file, Select Help > ReadMe.

Working with Bins

Bins are the specialized files used by Avid editing systems to organize clips and sequences. The first stage in generating lists with FilmScribe is to open one or more bins that contain the sequences with which you want to work.

FilmScribe can open bins that were created on Macintosh-based or Windows-based Avid editing systems. When you open a bin, FilmScribe displays all the sequences in that bin but does not display other kinds of files (such as clips and subclips) that might be in the bin.

Opening and Closing Bins

To open a bin:

1. Select File > Open.
A dialog box opens.
2. Navigate to the folder that contains the bin you want to open.
3. Click the bin you want.
4. Click Open.
The bin opens.

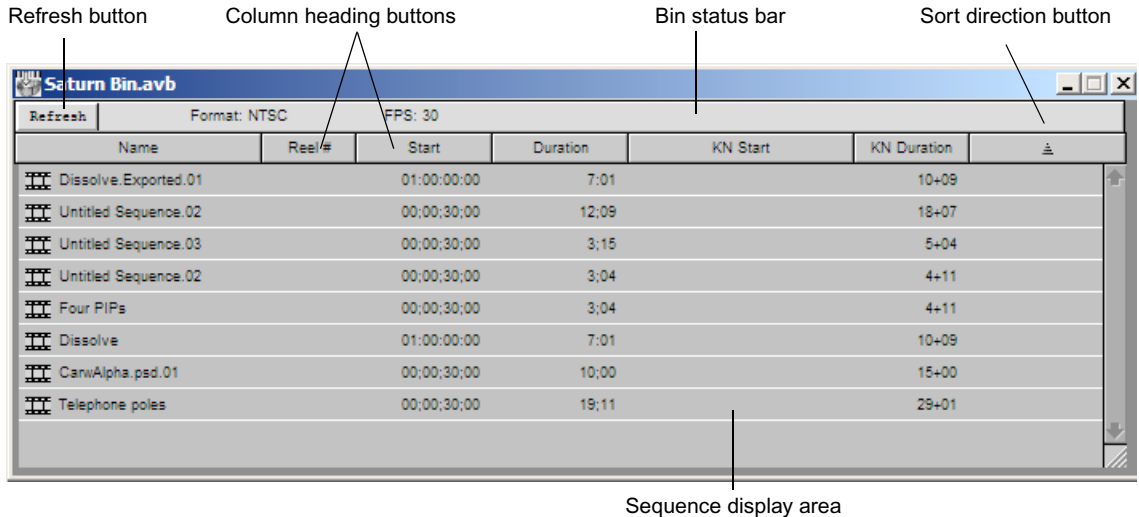
(Windows) To close a bin:

- ▶ Make the bin the active window, and then do one of the following:
 - Select File > Close.
 - Click the bin's Close button



(Macintosh) To close a bin:

- ▶ Make the bin the active window, and then Select File > Close.

Understanding the Bin Window

A bin window has the following features:

- The status bar displays information about the project with which the bin is associated:
 - The format of the project (for example, *NTSC* or *PAL*)
 - The frames-per-second (*fps*) rate of the project (24, 25, or 30)
- The Refresh button reloads the most recently used bin, and allows you to keep the FilmScribe tool open while you make changes in your Avid editing application.
- The column heading buttons display the names of selected headings associated with that bin. For more information on bin headings, see the Help for your Avid editing system.
- The Sort Direction button controls the order in which sequences in the bin are sorted.
- The Sequence display area shows a row of information for each sequence in the bin. Scroll vertically if you need to view all the sequences.

Sorting Items in Bins

You can sort the sequences in a bin by any of the column heading categories. For example, you might want to sort by reel number so that all the sequences from one reel are grouped together. FilmScribe sorts the sequences in alphabetical or numerical order, whichever is appropriate to the heading.

To sort items in a bin:

- ▶ Click the column heading button for the category by which you want to sort.

To switch between ascending (A to Z) and descending (Z to A) sort:



- ▶ Click the sort direction button, located at the far right of the column heading buttons.

The arrow on the button points up when ascending sort is selected and points down when descending sort is selected.

Working with the Cut List Tool and the Change List Tool

The Cut List tool and the Change List tool allow you to set options for the lists you want to generate.

Opening and Closing the Tools

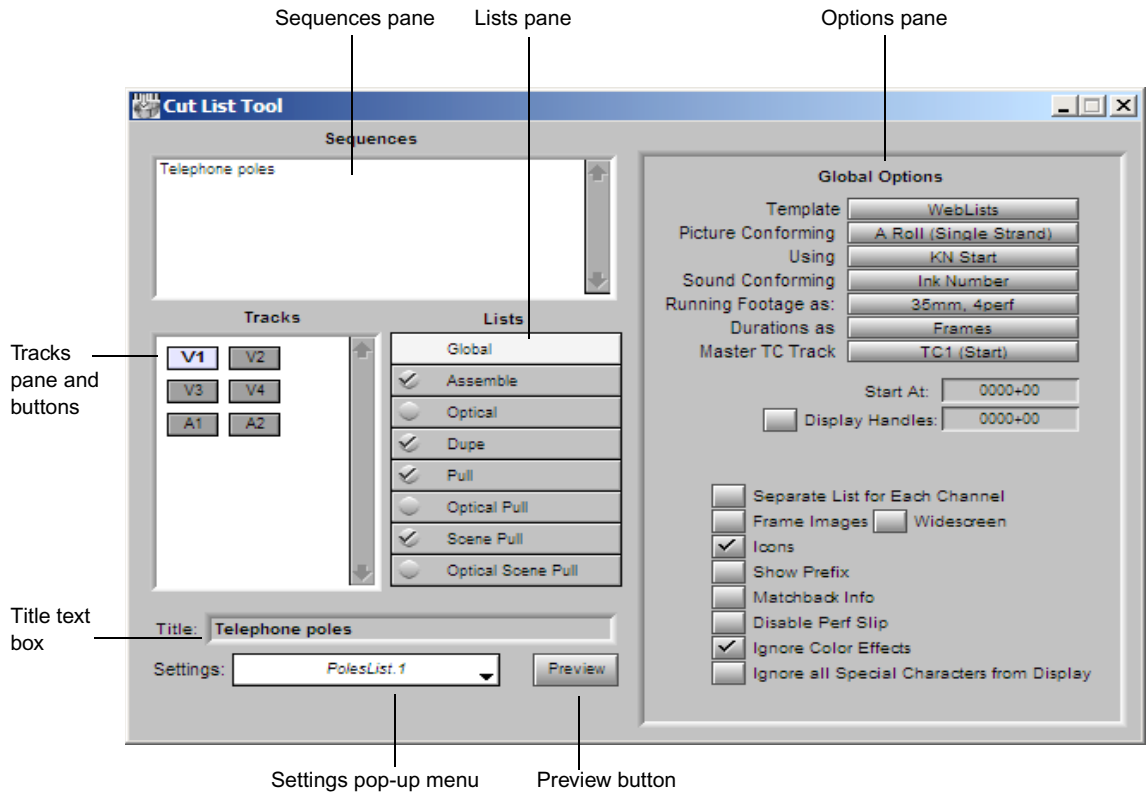
To open the Cut List tool or the Change List tool, do one of the following:

- ▶ Select File > New Cut List.
- ▶ Select File > New Change List.
- ▶ Select a sequence in a bin, and then select the appropriate item from the Sequence menu. For more information, see [“Using the Sequence Menu” on page 40](#).

To close the Cut List tool or the Change List tool, do one of the following:

- ▶ Click in the tool to make it active, and then select File > Close.
- ▶ Click the window’s Close button (Windows) or close box (Macintosh).

Understanding the Cut List Tool

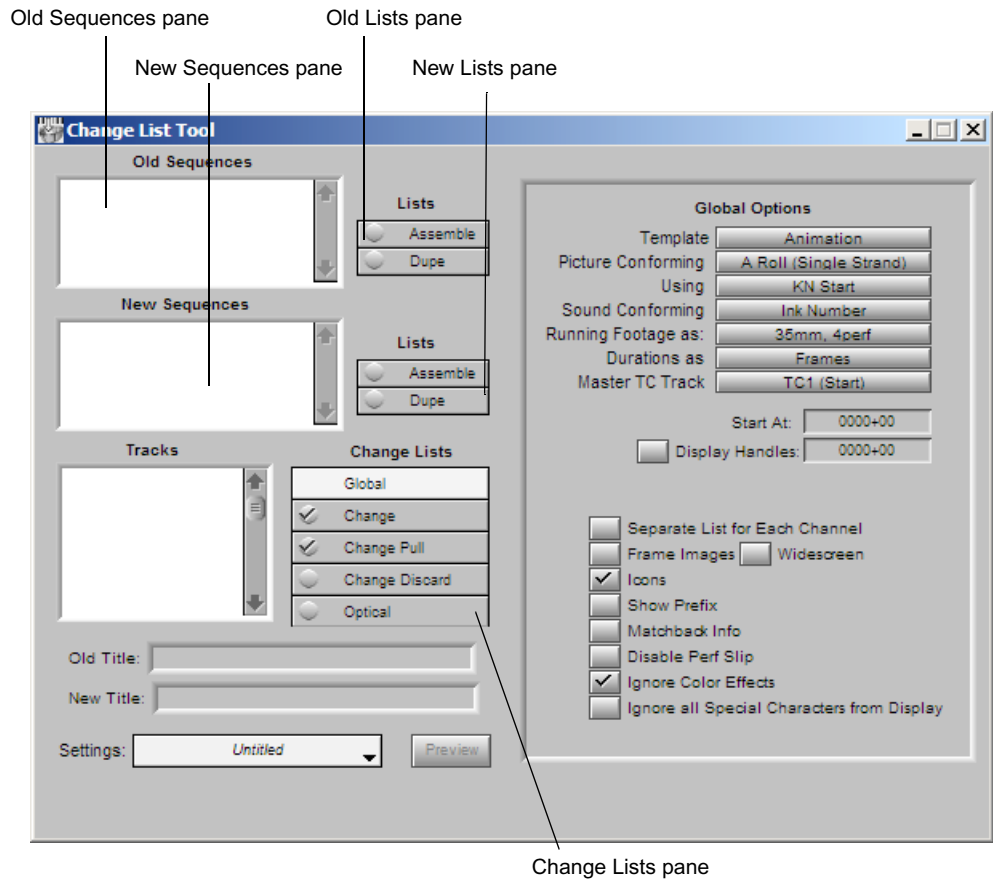


The Cut List tool has the following features:

- The Sequences pane displays currently loaded sequences.
- The Tracks pane allows you to select the tracks to be included in the list: video (picture) or audio tracks.
- The Lists pane allows you to select specific types of lists in addition to the main assemble list.
- The Title text box allows you to type a name for the list.
- The Settings pop-up menu allows you to save your current cut list settings and selections for future use.

- The Preview button performs the following operations depending on the template you are using:
 - For the TabbedLists template, FilmScribe prompts you for a folder name and stores the cut list or change list in the folder. You can open the file later in an application such as Microsoft Excel.
 - For the WebLists template, FilmScribe stores all the related files in *Avid Application/FilmScribeOutput/Title*, and then opens the HTML file in your default Web browser.
 - For all other templates, FilmScribe generates the list and opens the List window for previewing the list.
- The Options pane provides controls for customizing each of the lists you choose to generate.

Understanding the Change List Tool



The Change List tool has many of the same features as the Cut List tool, with the following differences:

- The Change List tool has two sequences panes: one for the old versions of the sequences and one for the new versions.
- Because old and new sequences lists exist, the Change List tool has two Lists panes. The panes allow you to select assemble or dupe lists separately for each sequence to include in the comparison when generating the list.

- The Change Lists pane allows you to select the specific types of change lists you want to generate.
- The Change List tool has text entry boxes for Old Title and New Title.

Getting Sequences

This section describes how to get sequences into the Cut List tool and the Change List tool.

Dragging Sequences from Bins

To get a sequence by dragging:

- ▶ Drag the sequence you want from the bin to the Sequences pane in the Cut List tool, or to the Old Sequences or New Sequences pane in the Change List tool.

The name of the loaded sequence appears in the pane.



If your sequences have unique Reel numbers, you can drag more than one sequence. To select more than one sequence, Shift+click each sequence you want, and then drag the sequences to the tool.

To add a sequence to a Sequences pane that already contains sequences:

- ▶ Press and hold the Alt key (Windows) or Option key (Macintosh) while you drag the additional sequence into the pane.

The name of the additional sequence is added to the pane.



If you do not press and hold the Alt key (Windows) or Option key (Macintosh) while dragging additional sequences into a pane, FilmScribe replaces the contents of the pane with the new selection.

Using the Sequence Menu

When you use the Sequence menu commands to get sequences, you do not need to have the Cut List tool or the Change List tool open. FilmScribe opens the tool if it is not already open.

To get sequences using the Sequence menu:

1. Make the bin the active window.
2. Click the sequence you want.
3. Select the appropriate command from the Sequence menu:
 - Open in CutList Sequences
 - Open in ChangeList Old Sequences
 - Open in ChangeList New Sequences

The Cut List tool or the Change List tool opens (if it is not already open), and the name of the sequence appears in the appropriate Sequences pane.



You can also open the Sequence menu as a pop-up menu in a bin. To do this, click the sequence using the right mouse button (Windows) or Ctrl+click the sequence (Macintosh).

To add a sequence to a list that already contains one or more sequences:



Your sequences must have unique Reel numbers to load more than one in the Sequences panel.

1. Make the bin the active window.
2. Click the sequence you want.
3. Select the appropriate command from the Sequence menu:
 - Append to CutList Sequences
 - Append to ChangeList Old Sequences
 - Append to ChangeList New Sequences

The Cut List tool or the Change List tool opens (if it is not already open), and the name of the additional sequence is added to the appropriate Sequences pane.

When you load the first sequence, FilmScribe determines whether the sequence was previously used to generate cut lists. If so, the settings that were last used are automatically displayed.

Clearing Sequences

To clear sequences from the Sequences panes in the Cut List tool or the Change List tool:

1. Make sure that the tool from which you want to clear sequences is the active window.
2. Select Clear Sequences from the CutList menu or the ChangeList menu.
FilmScribe removes the names of sequences in the panes.



Closing the Cut List tool or the Change List tool also clears sequences from the Sequences panes. (Most other settings are saved when you close the tool. For more information, see “Using Settings to Save, Recall, and Remove Options” on page 46.)

Selecting Tracks

The Tracks pane displays a button for each track that exists in the sequence. FilmScribe generates lists only for the tracks you select.

To select or deselect tracks, do one of the following:



- ▶ Click a track button to select or deselect it.
- ▶ Select one of the following:
 - CutList > Select All Tracks
 - CutList > Deselect All Tracks
 - ChangeList > Select All Tracks
 - ChangeList > Deselect All Tracks



In the Change List tool, the buttons in the Tracks pane correspond to the sequence you loaded into the New Sequences pane, not that in the Old Sequences pane.

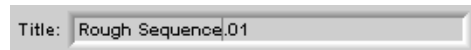
If the sequence is a 30-fps sequence (that is, a matchback project), audio tracks are not shown because matchback applies to picture-only sequences. Generate a separate edit decision list (EDL) for sound. For more information, see the documentation for your Avid editing system and for EDL Manager.



*If you select the **Separate List for Each Channel** option from the **Global Options** panel, you can select any combination of picture tracks. The **Separate List for Each Channel** option has no effect on audio tracks; you can always select any combination of sound channels.*

Renaming the List

FilmScribe inserts the name of your first loaded sequence into the Title text box. This becomes the default name of the list.



To give the list a different title name:

- ▶ Type it in the Title text box. This title appears as the name of the list when you print or save it.

Using the Options Pane

The Options panes contain specific options that apply to different types of lists. The Cut List tool has eight option displays:

- **Global** options affect the overall content of all lists and their display options.

The following displays provide a menu from which you select the information you want to see on the list, including key numbers, timecodes, reel information, and so on.

- **Assemble list** options include standard film and *timecode* tracking numbers, transition indications, and custom information such as comments and locators.
- **Optical list** options include film and timecode tracking numbers, custom column information, keyframe, optical footage, and page break information.
- **Dupe list** options include film and timecode tracking numbers, custom column information, tolerance, and handle length information. Dupe handles default to one frame and are adjustable.

- **Pull list** options include film and timecode tracking numbers, custom column information, pop-up menus for three levels of sorting, specifications for spooling method, and inclusion of opticals and film leader. The same options are available for Optical Pull lists, Scene Pull lists, and Optical Scene Pull lists.
- **Optical Pull** lists contain just the elements contained within an optical list. The default setting is for anything that is not a straight cut.
- **Scene Pull** lists contain the entire scene (flash to flash) as logged for each element in the Timeline. The list contains the scene only once even if it is used several times in the sequence. You must enter information in the bin Scene heading to create a Scene Pull list.
- **Optical Scene Pull** lists contain the same information as Scene Pull lists, but only for scenes used in an optical. The default setting is for anything that is not a straight cut. You must enter information in the bin Scene heading to create an Optical Scene Pull list.

The Change List tool has one additional basic option display:

- **Change list** options include specifications for listing only changes, for combining deletions, and for assigning preview code. You can also set the counter start number for the viewing footage in the Global Options pane.

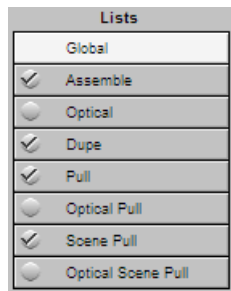


For a complete description of all the options, see Chapter 3.

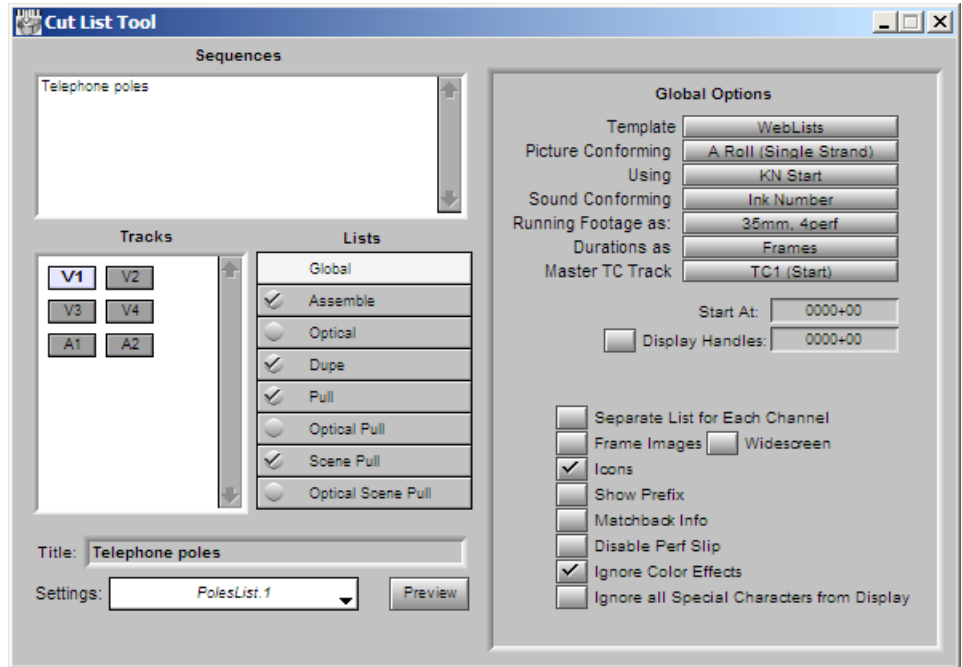
Selecting Options

To select options:

1. Click a list type in the Lists pane.



The list type is highlighted in the Lists pane, and the options for that list type appear in the Options pane (the right half of the tool). A check mark indicates which lists will be created.



2. Select check boxes, select from pop-up menus, or type in text boxes to select the options you want.

Copying Options Between List Types

After selecting assemble list options, you can apply the same options to other list types.

To copy options to another list type:

1. Select the assemble list options you want.
2. Click another list type in the Lists pane.
3. Click the Same As Assemble List button (in the Change List tool, click the Same As Change List button) at the top of the Options pane.

Same As Assemble List

To copy options to all other list types:

- ▶ In the Cut List tool, click the Update All Cut Lists button in the Assemble List Options pane.
- ▶ In the Change List tool, click the Update All Change Lists button in the Change List Options pane.

Changing the Options

You can change the cut list options or the change list options any time before or after generating a list.

To adjust the options and update the list:

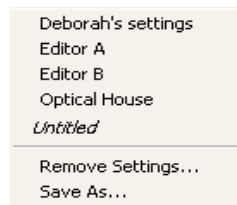
1. Alter your selections in the Options pane.
2. Regenerate the list.

Using Settings to Save, Recall, and Remove Options

The Settings feature allows you to save a set of options under a specific name. You can then quickly recall those options when you need to apply them again. The Settings feature remembers which list types you have chosen to generate, as well as all the options you have selected in the Options pane. The Settings feature does not remember which sequences you have loaded, or the title or track selection.

To recall a previous setting:

- ▶ Click the Settings pop-up menu, and select a setting.

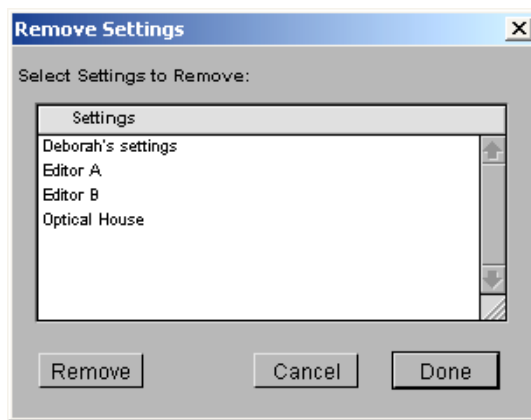


To save the current options as a setting:

1. Select Settings > Save As.
A dialog box opens.
2. Type a name for the setting, and then click OK.

To remove settings:

1. Select Settings > Remove Settings.
The Remove Settings dialog box opens.



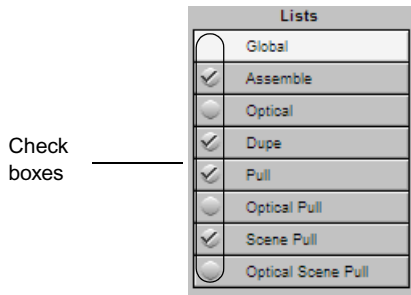
2. Select the setting you want to remove, and then click Remove.
3. Do one of the following:
 - ▶ Click Done to remove the settings permanently and close the Remove Settings dialog box.
 - ▶ Click Cancel to restore any settings you have removed and close the Remove Settings dialog box.

Previewing the List

After selecting options for your lists, you are ready to generate the lists and preview them in the List window.

To generate the lists and open the List window:

1. Select the list types you want to generate by selecting the appropriate check boxes in the Lists pane.



2. Click the Preview button at the bottom of the Cut List tool or the Change List tool.

The Preview button performs the following operations depending on the template you are using:

- For the TabbedLists template, FilmScribe prompts you for a folder name and stores the cut list or the change list in the folder. You can open the file later in an application such as Microsoft Excel.
- For the WebLists template, FilmScribe stores all the related files in *Avid Application/FilmScribeOutput/Title*, and then opens the HTML file in your default Web browser.
- For all other templates, FilmScribe generates the list and opens the List window for previewing the list.



The Animation and Storyboard templates support only Assemble lists in the Cut List tool and are not supported templates in the Change List tool.

Working in the List Window



This section applies to all the list templates except for WebLists and TabbedLists templates.

When you generate a list, it opens in a List window. You can use this window to view your list and to change its appearance. When you open a saved list, it also appears in a List window.



For information on working with WebLists, see “Using the WebLists Template” on page 57. For information on working with TabbedLists, see “Using the TabbedLists Template” on page 62.

Opening a List Window

To open a List window, load a sequence, and then do one of the following:

- ▶ Click the Preview button in the Cut List tool or the Change List tool.
- ▶ Open a previously saved list. See [“Saving, Opening, and Printing Lists” on page 56](#).

List window status bar

	Footage	Record TC	Duration	First/Last Key	Address TC	Lab Roll
1.	0+00 10+00	01:00:00:00 01:00:03:10	10+01 00:00:03:10	KL 54 2126-5556+05 5561+05	01:01:35:24 01:01:39:04	
2.	10+01 12+06	01:00:03:11 01:00:04:08	2+06 00:00:00:27	KL 54 2126-5693+00 5694+05	01:03:06:28 01:03:07:24	
3.	12+07 15+04	01:00:04:09 01:00:05:05	2+06 00:00:00:26	LEADER	00:00:00:00 00:00:00:21	
4.	15+05 21+02	01:00:05:06 01:00:07:03	5+06 00:00:01:27	KL 54 2126-5814+12 5817+09	01:04:28:03 01:04:29:29	
-





Before you save a list, the title bar of the List window reads “Cut List Preview” or “Change List Preview.” After you save a list, and when you open a saved list, the title bar shows the name of the saved list.

You can use the standard Windows or Macintosh controls to scroll through the list within the window or to resize the window so that you can see more of the list.

Understanding the List Window Status Bar

The following table describes the icons and messages that can appear in the List window status bar:

List Window Status Bar Messages

Message	Description
Appears on the left side of the status bar:	
 List is current	Indicates that the list matches the current option settings in the Cut List tool or the Change List tool.
 List is NOT current	If you generate a list and then return to the tool to change options, this message appears. It indicates that the list no longer matches the current option settings in the Cut List tool or the Change List tool. Regenerate the list to make it current again.
Appears on the right side of the status bar:	
Modified 	Indicates that you have modified the list in the window since it was last saved. This message also appears for a newly generated list that you have not yet saved.
Saved 	Indicates that the list in the window exactly matches the saved list.

Expanding and Collapsing Lists

Generated lists appear in the List window with heading bars. These bars indicate the list type and enable you to collapse or expand each list. You can also expand or collapse all lists at once, switching from a view that shows all your lists in full to one that shows only the heading bars.



(Macintosh only) To expand or collapse a list:

- ▶ Click anywhere in the heading bar.

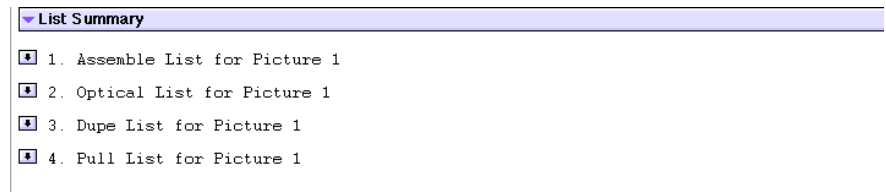
To expand or collapse all lists:

- ▶ Select List > Expand Lists or List > Collapse Lists.

Using the List Summary Option

When there are multiple tracks, clicking the List button brings you to the beginning of the group of assemble lists, not to the list you selected. This is also true for other lists, such as optical lists.

If you select List Summary in the Global Options pane, a list summary appears above all the other lists. This summary has its own heading bar and also displays a navigation button to the left of each list summarized.

**To move to the top of a particular list:**

- ▶ Click the button for that list in the list summary.



If you have only one list open, clicking the button for that list in the list summary also closes the list summary.

Editing and Formatting Lists

The List window functions as a basic text editor. You can edit and format your lists in a variety of ways to customize them for your particular needs. You can do the following:

- Add comments
- Cut, copy, and paste material
- Use typographical distinctions (font type or style, text size or color) to highlight parts of the list

This feature enables you to alert the readers of your lists to special issues and concerns. You can also easily create slightly different versions of the same list, for different audiences, by commenting and highlighting the list in different ways and then printing individual copies.



All the text except the title bar or headings bars that displays in the List window can be edited. Typically, you do not want to change the generated information that is in the list. Take care not to delete important material.

To add a comment to your list:

- ▶ Move the cursor to the place where you want the comment, and type your comment.



You might want to use a different text color for any comments that you add in the List window. (Select a color from the Color menu, and then type your comments.) You can then easily distinguish them from comments made earlier in the editing process.

For information on editing commands, see your Windows or Macintosh documentation.

To edit material in the list:

- ▶ Select the material you want to edit, and then select the appropriate command from the Edit menu.

To highlight text using typographical distinctions:

1. Select the text you want to highlight.
2. Select the typographical effect you want from the Font, Style, Size, or Color menu.



You cannot change these parameters in Weblists or TabbedLists.



If you are able to print your lists in color, or if they will be viewed onscreen by their intended readers, color is probably the most effective way to highlight your lists. You can highlight all comments in red, for example. Or you can provide comments in different colors, keying each color to the needs of a particular reader of the list.

Changing the Appearance of Text in Generated Lists

After generating a list, you can modify its appearance by changing the font and the font's style, size, and color. These changes affect the whole list.

To alter your list's appearance:

1. Select the text that you want to modify.
2. Select the appropriate item from the Font, Style, Size, or Color menu.

Viewing Sequences as QuickTime Movies

If the sequence with which you are working is available to FilmScribe as a QuickTime movie, and you select the Frame Images option in the Global Options pane of the Cut List Tool or the Change List Tool windows, the list that you generate includes a thumbnail image of the head frame for each event in the list.

The image thumbnails provide an immediate visual reminder of the sequence. You can also use these thumbnails to open the QuickTime movie of the sequence in the Movie window. You can then play all or part of the sequence.

To use this feature, first export your sequences from your Avid editing system as QuickTime movies (.mov) files, and make those files available for FilmScribe to read them. You must have QuickTime loaded on your computer. For information on preparing QuickTime movies of sequences and making them available to FilmScribe, see [“Preparing QuickTime Movies” on page 88](#).

Opening Movie Sequences

To open a sequence in the Movie window:

- ▶ Click the image thumbnail.

The Movie window opens, displaying the frame of the movie sequence represented by the thumbnail.

You can also open a movie directly into the Movie window by choosing File > Open and then opening the movie file.



List files created by the WebLists template can be opened in any web browser on either Macintosh and Windows systems. List files generated by other FilmScribe templates are not compatible across platforms. You cannot open a list created in FilmScribe for Macintosh by using FilmScribe for Windows, or vice versa.

Controlling the Play of Movie Sequences

You can control how a movie sequence plays in the Movie window by using controls on the window itself and using commands in the Movie menu. You can also use commands in the Movie menu to alter the size of the Movie window.

The following table describes the controls in the Movie window.

Movie Window Controls

Control	Description
Play/Pause button	Click to play a movie. When a movie is playing, the Pause button is displayed. Click the Pause button to stop play.
Slider	The horizontal bar is a graphical representation of the length of the movie. The slider marks the point in the movie that is currently displayed. Click on the bar to move to any specific point in the movie. Drag the slider along the bar to fast forward or rewind through the movie.
Step Backward button	Click to step backward one frame.

Movie Window Controls (Continued)

Control	Description
Step Forward button	Click to step forward one frame.

The following table describes the commands in the Movie menu that control movie play or the size of the Movie window.

Movie Menu Commands

Command	Description
Loop	Plays the movie repeatedly. When the system reaches the end of the movie, it returns to the beginning and starts play again.
Loop Back and Forth	Plays the movie repeatedly, in alternating directions. When the system reaches the end of the movie, it starts to play the movie backward from the end point.
Play Selection Only	Plays only a selection of the frames in the movie. Playback jumps from one selected frame to the next.
Play All Frames	Plays every frame in the movie.
Half Size	Decreases the size of the Movie window by half, which can increase the movie playback speed.
Normal Size	Returns the Movie window to its default size.
Double Size	Doubles the size of the Movie window. Increasing the window size allows you to see images more clearly but can slow down movie playback.

Saving, Opening, and Printing Lists

When the list is ready, you can print it immediately or save it as a text file that you can bring to another location, import and use in another system, or open and print at a later time.

After the list is saved, you can edit it in a text editor. For example, you can add comments for an assistant editor or a negative cutter.



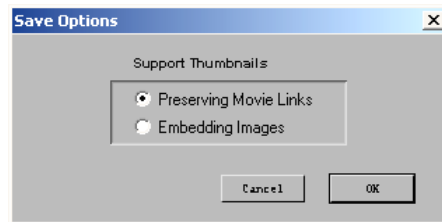
List files created by the WebLists template can be opened in any web browser on either Macintosh or Windows systems.

Saving Lists

To save a list:

1. Select File > Save.

The Save Options dialog box opens.



2. Select the desired option, and then click OK.

A dialog box opens.

3. Type the file name in the File name text box.
4. Select a destination for the file.
5. Click Save.



(Windows only) Avid recommends that you use the .txt file name extension at the end of all list names. FilmScribe works best with saved lists that have this file name extension. (This does not apply to lists generated with the WebLists template.)

Opening a Saved List

To open a previously saved list in a List window:

1. Select File > Open.
A dialog box opens.
2. Navigate to the location of the file you want to open.
3. Click the file name, and then click Open.



You cannot open an HTML file from within the Open dialog box.

Printing Lists

To print a list:

1. Select File > Print.
The standard Print dialog box opens.
2. Select the Print options you want, and then click OK (Windows) or Print (Macintosh).
FilmScribe prints the list exactly as it appears in the List window.

Using the WebLists Template

The WebLists template allows you to create an HTML cut list or change list. These lists can be viewed in any standard web browser. You can post these lists to an intranet, enabling collaboration between groups. These lists are hyperlinked, which allows you to jump between lists. For example, you can click on an Optical entry in the Assemble List, and it opens a browser at the information in the Optical List. You can also take advantage of the browser's support for printing.

make | manage | move **Avid.**

Assemble Optical Dupe Pull Scene Pull Opt Scene Pull Optical Pull

Assemble List
Sequence: **Swimming**

Sequence Movie

Events: 18 Picture Conform Method: A Roll (Single Strand) Conformed by: KN Start
Dupes: 9 Total Footage: 3157 Running Footage: 35mm, 3perf
Opticals: 0 LFOA: 3157 Durations: Frames
Tracks: Picture 1 Total Time: 00;02;11;19 Master TC type: Start
Sound Conform Method: Auxiliary Ink

Event	Dupe Group	Footage	Head	Tail	Master TC Start	Duration	Key Number	Start	Lab Roll	Cam Roll	Clip Name	Scene Take
1	Z	0000+00.1 0017+14.3			00;00;30;00 00;00;45;20	00;00;15;20	377	01:12:43:26 01:12:59:16			4-2-2: Ground level through Tom's legs swimmer's exit.new.01	
2	3	0017+15.3 0024+13.1			00;00;45;21 00;00;51;26	00;00;06;05	149	01:01:36:19 01:01:42:24			2-1-2: WS Entering building.new.01	



If you want to view WebLists on another system, copy the entire folder, not just the HTML file.



List files created by the WebLists template can be opened in any web browser on either Macintosh or Windows systems. List files generated by other FilmScribe templates are not compatible across platforms. You cannot open a list created in FilmScribe for Macintosh by using FilmScribe for Windows, or vice versa.

3. You can view the following in HTML cut lists:

- Opticals in the Assemble List that are linked to their description in the Optical list
- Items in the Optical List that are linked to the appropriate event in the Assemble List.
- Duplicates in the Assemble List that are linked to the entries in the Dupe List

- Events in a Dupe Group in the Dupe List that are linked to locations in the Assemble List
 - Pull List items that are linked to their location in the Assemble List
4. You can view the following in change lists:
 - Change, Change Pull, Change Discard, and Optical items.
 - Change lists that are hyperlinked to the old and new Assemble and Pull Lists.
 5. To print your list, use the browser's print setup option (choosing fonts, text size, and so on).



You can save your HTML files as pdf files while in the browser.



At this time, certain List options are not available with the WebLists template: Monospace Font, Size, and Icons.

You can use the QuickTime player at the top of the browser page to play the entire sequence. For more information on creating QuickTime movies to use with the Frame Images option, see [“Preparing Sequences” on page 86](#).

If you also generate the dupe list, you can click the hypertext link to display the related event in the dupe list. The following illustration shows a Dupe list.

Dupe List
Sequence: **Swimming**

Sequence Movie

Dupe Group: 1

Event	Footage	Master TC Start	Duration	Key Number	Start
1	0056+15.3	00;01;20;13	173		01:17:54:24
	0064+16.2	00;01;27;18	00;00;07;05		01:18:01:29
2	0130+20.2	00;02;26;15	173		01:17:54:24
	0139+00.2	00;02;33;20	00;00;07;05		01:18:01:29

Dupe Group: 2

Event	Footage	Master TC Start	Duration	Key Number	Start
1	0024+14.1	00;00;51;28	97		01:01:09:25
	0029+04.3	00;00;55;28	00;00;04;00		01:01:13:25
2	0098+20.3	00;01;58;00	97		01:01:09:25

Hypertext link

Using the TabbedLists Template

The TabbedLists template allows you to create a list that you can open in a separate application such as Microsoft Excel or FileMaker® Pro. The TabbedLists template supports all the lists and options.

To Create a List with the TabbedLists Template:

1. Select Template > TabbedLists in the Global Options pane.
2. Click the Preview button.

You are prompted to name the folder.

3. Name the folder, and then click OK.

If the folder already exists, the system informs you that it will delete the current contents of the folder. Click OK or click Cancel to stop this process.

4. A .txt file for each list is created and placed in the folder.
5. You can then view the lists with any standard text editor.



You can also drag the list to a spreadsheet program, such as Microsoft Excel.

Working with Multiple Cuts and Reels

In the advanced stages of a project, you might need to make cut lists or change lists for conforming work prints or making comparisons between multiple cuts or reels. FilmScribe provides specific features that allow you to:

- Create a single cut list for several sequences so you can compile them for a single conformed cut
- Create change lists for multiple screening reels so you can update the conformed reels, make comparisons between sequences, or adjust breaks between reels in preparation for a final cut

Creating a Cut List for Two or More Sequences

With two or more sequences loaded, the system generates one cut list with appended sections for all sequences in their listed order. The cut list provides lists for the sequences in order.

To create a single cut list for several sequences:

1. Make sure the sequences are named so that they are sorted in the proper order in the Cut List tool.
2. Ctrl+click (Windows) or Shift+click (Macintosh) the chosen sequences in the bin, and then drag them to the Sequences pane.
3. Select the options you want, and then generate the list.

The cut list provides lists for the sequences in order.

Creating Change Lists Across Multiple Reels

When you load comparable sequences, FilmScribe generates consecutive, appended lists for each set of cuts. You can make comparisons based either on reel numbers or on preview code that you assign to each sequence.

Depending on the options you select, the new list notes any of the standard change categories across the reels:

- Insertions of new material
- Deletions of material no longer needed
- Trims to be made to the heads and tails of the edits
- Moves that consist of a matched pair of deletions and insertions
- Optional information that details which portions of the sequence should not be altered

In addition, you can generate separate lists for each set of reels and simultaneously generate a single dupe list that describes duplicated shots across all the reels. These topics are described in this section.

Using Reel Numbers

When you use reel numbers to generate change lists for multiple reels, observe the following conditions:

- For each sequence, the old version and the new version must have exactly the same reel number in order for the system to make the appropriate comparisons.
- The reel numbers must be entered into the Reel # column in the bin for each sequence.

- The reel numbers must be consecutive so that the system can generate lists that match the appropriate order of the reels; for example, sequence 1.1, sequence 1.2, and so on.
- You must have an equal number of old and new sequences. If necessary, create a dummy sequence to balance the reels.

To generate a change list using reel numbers:

1. Prepare the sequences with the appropriate reel numbering if necessary.
2. Ctrl+click (Windows) or Shift+click (Macintosh) all the old sequences in the project bin (each sequence must represent a different reel).
3. Drag the selected sequences into the Old Sequences pane to load them.
4. Repeat steps 2 and 3 for the new sequences, dragging them into the New Sequences pane. Each new sequence must represent a different reel that shares the same reel ID as the corresponding old sequence.
5. Add sequences to the lists as necessary by pressing and holding the Alt key (Windows) or Option key (Macintosh) while dragging the selections into the appropriate Sequences pane.
6. Select the options you want and generate the list.

Using Preview Code

Preview code is an optional numbering system that you can use to ink each conformed work print with continuous numbers that you match for the corresponding sequence in FilmScribe.

Preview code applies to one generation of changes on the work print only. You must re-ink each successive work print and enter those preview code numbers as KN Start numbers for each new revision of a sequence.



You can request that the lab differentiate successive generations of preview code by applying different colors.

Preview code both supplants comparisons based on reel numbers and provides the advantage of continuous numbering within each generation of a sequence or cut.



Because new material edited into the sequence has not yet been inked with preview code, you must select the options for displaying key numbers or ink numbers for referencing the original source footage for these clips in the list.

To track changes with preview code in the Avid editing system (or in Avid MediaLog) and in FilmScribe:

1. After re-inking the first work print with preview code, enter the matching start preview code number in the KN Start column of the bin for the corresponding sequence.

Name	KN Start	Duration	KN End	KN Duration
Version 2	VX2-1000+00	1:04:19	1096+14	96+15
Version 4	VX4-1000+00	1:55:06	1172+12	172+13

KN Start column



Change the starting key number for the sequence only. Do not override KN Start information for the original master clips used in the sequence.

2. Duplicate the sequence, and then place the original into an archive bin.
3. Rename the duplicate, but be sure to maintain the same reel number in the Reel # column of the bin.
4. Continue editing the duplicate sequence.
5. When the time comes to generate a new change list in FilmScribe, load the old and new sequences, and then select Preview Code from the Change List options.
6. After the work print is reconformed, ink the new work print with new preview code, and enter matching numbers in the KN Start column for the corresponding sequence (the duplicate of the original sequence).
7. Duplicate this sequence, and then continue the same cycle as often as necessary.

Dupe Checking Across Multiple Reels

If your project consists of multiple reels, it probably has a separate sequence for each reel. These reels, however, might share footage that requires duplication. FilmScribe allows you to check for dupes across multiple reels within one change list.

To generate a dupe list for multiple reels:

1. Follow the steps described in “Using Reel Numbers” on page 63 for loading comparable reels into the Change List tool.
2. When choosing options for the list, select Assemble list, Dupe list, and Reel Numbers options.

Using the Matchback Option

The matchback option that is available on some Avid editing systems allows you to generate a film cut list from a 30-fps video project that uses film as the source material. This video-to-film conversion is useful in a variety of matchback circumstances, including the following:

- To generate a videotape master for the project along with a final cut on film
- To generate pull lists for retransferring selects at high quality before online editing



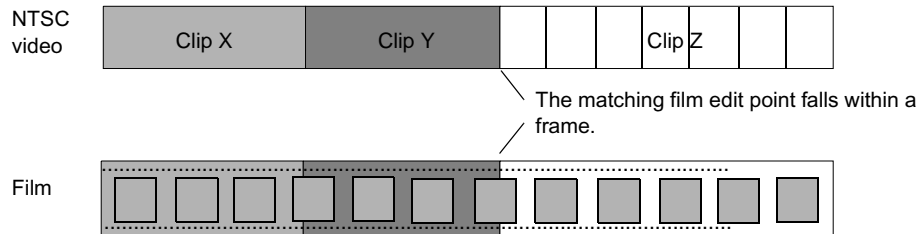
Editors working on a film matchback project for the first time should pay close attention to duplicate material in the final edited piece. Use Dupe Detection in the Timeline and verify any dupes flagged.

Understanding Matchback

The matchback process refers back to the video edit information for your sequence and performs a conversion to create a matching 24-fps cut list.

Because of the difference in frame rates between video and film (30 fps or 25 fps for video versus 24 fps for film), the conversion of video edit points might fall within a film frame, requiring the addition or subtraction of a frame in that edit event in the resulting cut list.

For example, with a ratio of 24 film frames to 30 video frames, a seven-frame video edit corresponds to approximately 5.6 film frames. However, film cuts cannot include partial frames, so the edit must be rounded to five or six frames.



The following adjustments occur during matchback:

- If the total video-sequence duration at the end of each cut is a frame longer than the film, then the system subtracts a frame from the last video edit. If the video is a frame too short, a frame is added to the last video edit.
- Where an essential frame was added or subtracted to the beginning or end of each edit, the system adds matchback information to the cut list stating that matchback shortened or lengthened the tail of the clip by one frame. The assistant editor or negative cutter can use this information to check the edit.
- Each track in the sequence must be corrected independently because the start and end points for split edits are different for each track. As a result, the picture and audio for a matchback video edit might be out of sync by no more than one frame.

Matchback is subject to the following limitations:

- The matchback option uses key numbers to conform the negative. Therefore, you must have key number information entered in the bins for the project.
- You can generate cut lists but not change lists in a matchback project.
- The matchback information applies to the picture only. You must generate a separate list (an EDL, for instance) for conforming the audio source tapes.

- Be sure to remove unwanted match frames (add edits) from your sequence before generating the cut list. Otherwise, the calculation of matchback frames includes these edits. For more information, see [Appendix A](#).

Generating a Cut List with Matchback

To generate a cut list with matchback, you must first set up matchback options at the project level in your Avid editing system. For more information about setting up matchback options while starting a project, see the Help for your Avid editing system.

To generate a cut list with matchback information:

1. Create a sequence.
2. Use the procedures for getting a sequence, selecting tracks, and choosing settings, as described in “[Working with the Cut List Tool and the Change List Tool](#)” on page 36.



All templates are available with matchback projects.



When you select Global options, select the Matchback Info option in the Options pane to display the matchback information in the list.

Chapter 3

Film List Options

This chapter explains all the options you can use to customize your cut and change lists. It includes the following main sections:

- [Cut List Global Options](#)
- [Cut List Options Common to All Lists](#)
- [List-Specific Cut List Options](#)
- [Change List Global Options](#)
- [Change List Options Common to All Lists](#)
- [List-Specific Change List Options](#)

Cut List Global Options

Global options affect the appearance and format of all the generated lists. The following table describes the global options.

Cut List Global Options

Option	Suboption	Description
Template	Animation	Displays a list that is customized for animators, including a running counter, frames, durations, and the clip name. The first and last frame of each clip are displayed, along with additional information that you select.


Cut List Global Options (Continued)

Option	Suboption	Description
	Columnar	Displays columns of selected information in the simplest information-display format.
	Locators	Displays only clips that contain locators. For more information about locators, see “Cut List Options Common to All Lists” on page 74 and the Help for your Avid application.
	OpticalBlock	Lists all opticals graphically (instead of textually).
	Storyboard	Displays a list that is customized for animators, including the clip name, scene, and take. The starting frame of each clip is displayed in rows of four.
	TabbedLists	Allows you to create a tab-delimited cut list or change list that you can save and open in another application, such as Microsoft Excel, or FileMaker Pro. For more information, see “Using the TabbedLists Template” on page 62 .
	WebLists	HTML-based lists that can be opened in a Web browser for viewing or printing. See “Using the WebLists Template” on page 57 .
Picture Conforming		<p>Selects the conforming method that is used to conform the picture. This option has no effect on sound lists. This affects how standard-length dissolves and fades are treated.</p> <p>This option is not present for change lists, which always assume A-roll conforming.</p>
	A Roll (Single Strand)	All transition effects, regardless of type or length, are treated as opticals.
	A/B Roll (Double Strand)	Standard-length dissolves, fade-ins, and fade-outs are placed directly in the assemble list and are not treated as opticals unless they are part of some other optical effect such as a motion effect. The standard lengths are 16, 24, 32, 48, 64, and 96 (frames).

Cut List Global Options (Continued)

Option	Suboption	Description
Using	Key Number (KN Start) Ink Number Auxiliary Ink DPX VFX Transfer	Select the type of numbers to use to conform the picture. FilmScribe uses this value to ensure that those numbers exist for all sources. If a source lacks the required numbers, the Cut List tool displays a message box.
Sound Conforming	Ink Number Auxiliary Ink	Select the type of numbers to use to conform the sound tracks. FilmScribe uses this value to ensure that those numbers exist for all sources. If a source lacks the required numbers, the Cut List tool might display a message box.
Running Footage as	Total Frame Count Total Frames 3 perf 35mm, 2perf 35mm, 3perf 35mm, 4perf 35mm, 8perf 16mm, 20perf 16mm, 40perf 65mm, 5perf 65mm, 8perf 65mm, 10perf 65mm, 15perf	Specifies the format in which to display the incrementing count for the sequence.
Durations as	Frames Footage	Displays the duration in the specified number of frames. Displays the duration in the format selected under Running Footage as.
Master TC Track	TC1 (Start) TC 24 TC 25P TC 25 TC 30 DF TC 30 ND TC 30 NP TC 60	Select which timecode track you want to be used to display the master timecode in the list. 30 fps drop-frame 30 fps non-drop-frame 30 fps no pulldown
Start At		Specify the footage to be used as a starting point in the master.

Cut List Global Options (Continued)

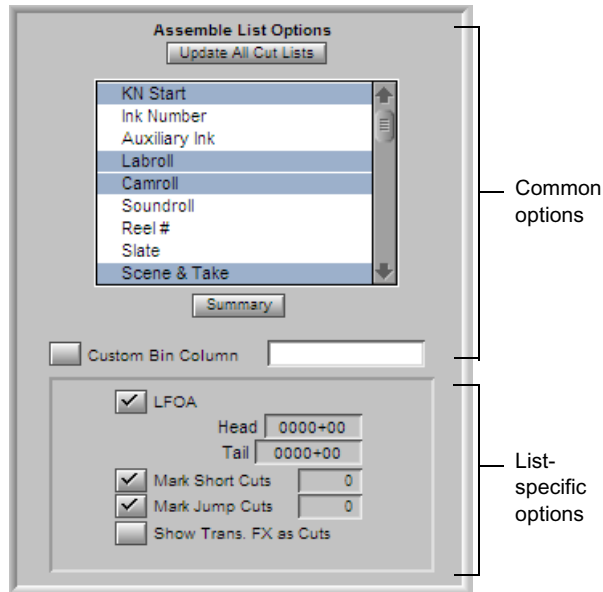
Option	Suboption	Description
Display Handles		<p>Select Display Handles, and then type a handle size. FilmScribe adds a new With Handles column to the lists for each source column for WebLists and TabbedLists templates. The With Handles column contains the start and end values of the column and adds a handle of the specified size.</p> <p> <i>Other templates show values including the handles.</i></p>
Separate List for Each Channel		<p>Generates a separate set of lists for each selected picture track. Multitrack (multilayer) effects are ignored and replaced with the foreground track from the effect. Single-track effects are treated as usual.</p> <p>When this option is not selected, the Cut List tool generates one set of lists for all selected picture tracks combined. This is the normal mode of operation.</p> <p>This option affects how the track selectors behave on the Cut List tool.</p>
Frame Images		<p>After you create a QuickTime movie of the sequence this option displays a thumbnail frame image for each clip in the cut list or change list. (You can print the frame image.) FilmScribe prompts you for the location of the QuickTime movie, and then displays the starting frame from each event in the sequence.</p>
Widescreen		<p>Select this if you are displaying frame images and the frames are 16x9 aspect ratio. Deselect it if the frames are 4x3.</p>
Icons		<p>Includes representative icons in your assemble list to identify each A/B-roll fade-in, fade-out, dissolve, and dupe in the sequence (not applicable to single-strand A-roll or work print). These icons reference only standard-length dissolves; therefore, a 7-frame dissolve is referenced as an optical in the cut list, not as a dissolve. Note that icons used in change lists are different; they reference each deletion, trim, or insertion required to update the work print. For more information about icons in lists, see “Understanding the Cut List Tool” on page 37.</p>

Cut List Global Options (Continued)

Option	Suboption	Description
Show Prefix		Identifies cuts in the cut list or change list by displaying the entire first and last key number for each cut. The generic prefix includes the code at the start of each key number, as in KN 12 3400. Deselect this option to include the entire key number for the first frame of each cut but only the footage and frame count for the last frame of each cut, minus the KN prefix.
Matchback Info		Available only for NTSC. Shows what modifications were made during the matchback process. To use this option, you must have selected matchback at the project level. This option does not control whether matchback is performed. You determine whether matchback is performed when you create the project.
Disable Perf Slip		Instructs the Cut List tool to ignore audio perf slipping and offset data when displaying ink numbers.
Ignore Color Effects		Instructs the Cut List tool to generate the cut list without color effect information.
Ignore All Special Characters from Display		Instructs the Cut List tool to generate the cut list without graphic icons, header images, or QuickTime movie images.

Cut List Options Common to All Lists

When you select one of the lists in the Cut List tool, the Options pane shows the options for that list type.



Most options are the same for all the list types; these common options appear at the top of the display. Options that are specific to the selected list type appear at the bottom of the display.



FilmScribe can reference and include in lists only information that has been logged into bins using an Avid editing system or Avid MediaLog. Make sure you enter any information that you need before you attempt to generate lists in FilmScribe.

The following table describes the common options.

Cut List Common Options

Option	Description
Set All Cut Lists Same As Assemble List	These options appear at the top of the Options List depending on which tool and list is currently selected. These options allow you to copy options between other lists types.
Set All Change Lists Same As Change List	
KN Start	Displays film reference numbers based on data from the KN Start column in the bin.
Ink Number Auxiliary Ink Labroll Camroll Soundroll Reel # Slate Scene & Take	Usually applies to work prints and sound track editing. Displays user-definable numbers from corresponding columns in the bin. If there is no corresponding bin column, it means you did not log this data when you captured; the system can display only information that you logged for the project.
Name	Name of the source clips used in your sequence (master clips and subclips).
Comments	Includes comments about cuts or transition effects that you added to the sequence by using the Add Comments menu command in your Avid editing system. For information on adding comments, see the Help for your Avid editing system.
Locators	References sequence locators in the cut list or change list. Locators are markers applied to particular frames during an edit session to indicate special attributes such as music cues, sound effects, clap markers, and so on. If the editor's locators contain comments, they are also displayed in the cut list when you select this option. For information on adding locators, see the Help for your Avid editing system.
TC1 (Start)	Start timecode Source timecode based on the TC Start bin column, counting at the same rate as the project.
Master TC	Master timecode Sequence timecode based on the Master Start bin column, counting at the same rate as the project.

Cut List Common Options (Continued)

Option	Description	
Sound TC	Address-track timecode	Source timecode based on the starting value in the Sound TC bin column, counting at the same rate as the project.
Auxiliary TC 1-5	Custom or duplicated timecode	Source timecode based on the Aux TC bin columns, counting at the same rate as the project.
Aux TC 24	Custom or duplicated timecode	Source timecode based on the Aux TC24 bin column, counting at 24 fps.
Film TC	Film timecode generated through the telecine transfer	Source timecode based on the starting value in the Film TC bin column, counting at the same rate as the project. The column is generated by telecine transfer. Used to track timecode recorded on the original film negative during production
TC 24	For 24p and 25p projects	Source timecode based on the starting value in the TC24 bin column, counting at 24 fps.
TC 25	For 24p and 25p projects	Source timecode based on the starting value in the TC25 bin column, counting at 25 fps.
TC 25P	For 24p and 25p projects	Source timecode based on the starting value in the TC25 bin column, counting at 25 fps, but with the 13th frame dropped.
TC 30 DF	Drop frame	Source timecode based on the starting value in the TC30 bin column, counting at 30 fps, drop frame.
TC 30 ND	30-fps non-drop-frame timecode.	Source timecode based on the starting value in the TC30 bin column, counting at 30 fps, non-drop frame.
TC 30 NP	with no pulldown	Source timecode based on the starting value in the TC30 bin column, counting at 30 fps, no pulldown.
TC 60	60-fps timecode	Used for 720p-60 HD projects.
Tape ID	Identifies the tape	ID of the tape, as defined in the TapeID bin column.

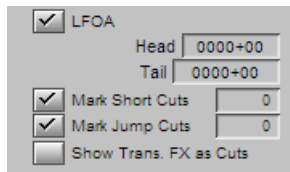
Cut List Common Options (Continued)

Option	Description
Pullin Src	Identifies the source frames as either A, B, C, or D frames. The original pulldown cadence from the NTSC source tapes.
Pullin Rec	Identifies the newpulldown cadence created by the edited version.
DPX	Frame-counting field for Digital Picture Exchange, a SMPTE standard describing frames scanned from film. The format is the following: a descriptor of up to 32 alphanumeric characters, followed by a hyphen (-), followed by a six-digit frame count, for example, DPXChildDocu-023657.
VFX	Frame-counting field for visual effects. The format is the following: a descriptor of up to 32 alphanumeric characters, followed by a hyphen (-), followed by a six-digit frame count, for example, FXChildDocu-023657.
VFX Reel	Source reel identification for the FX shot.
LUT	File name of the color look-up table used for the series of clips or frames.
Transfer	Frame-counting field for sources that have been prepped for transfer. The format is the following: a descriptor of up to 32 alphanumeric characters, followed by a hyphen (-), followed by a six-digit frame count, for example, CameraRoll23-000001.
UNC Path	Universal Naming Convention that specifies the location of resources on a server. The location you enter becomes a hyperlink to that location.
Summary	Displays selected options. Click again to return to the menu.
Custom Bin Column	To add data from a custom column on a per cut basis, specify the custom column name. The name must be identical (including case) to the name as it appears in the bin.

List-Specific Cut List Options

Options that are specific to a particular list appear at the bottom of the Options pane. The following sections explain the list-specific options for each type of list available in the Cut List tool.

Assemble Lists



The following table describes options specific to the assemble lists.

Assemble List Options

Option	Description
LFOA	(Last Frame of Action) Determines the duration of a sequence at the last frame that is part of the sequence, minus the length of the head and/or tail. Select the option and enter the length of the head and/or tail.
Mark Short Cuts	Searches the assemble list for cuts that are shorter than a user-specified minimum. All such cuts are flagged with a comment.
Mark Jump Cuts	Searches the assemble list for jump cuts that are shorter than a user-specified minimum. All such cuts are flagged with a comment. A jump cut occurs when a short piece of material is “missing” between adjacent cuts from the same source material.
Show Trans. FX as Cuts	Shows transition effects, such as dissolves, as comments in the assemble list rather than as opticals.

Optical Lists

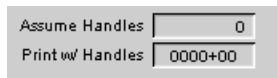


The following table describes options specific to optical lists.

Optical List Options

Option	Description
Key Frames	<p>Controls whether or not optical keyframes from the sequence are shown in the optical list. This option also displays information for Paint and AniMatte™ effect options.</p> <p>If you change the keyframe parameters of an effect, the change is reflected in the change list only if you select this option.</p>
Optical Footage	Shows footage relative to the beginning of each optical.
Page Breaks Between Opticals	Each optical prints on a separate page.

Dupe Lists

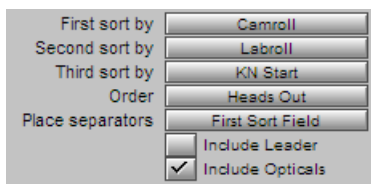


The following table describes options specific to dupe lists.

Dupe List Options

Option	Description
Assume Handles	Specify the number of frames for handles during dupe checking. The frames are added to the beginning and the end of each clip before checking for overlap. (The handles are not reflected in a list but are used for internal calculations.)
Print w/Handles	Specify the number of frames for handles after dupe checking. The frames are added and displayed at the beginning and end of each clip in the list.

Pull Lists



The following table describes options specific to Pull, Optical Pull, Scene Pull, and Optical Scene Pull lists.

Pull List Options

Option	Description
Sorting	<p>These options control how a list is sorted. They affect only pull lists. They do not affect assemble, optical, or dupe lists.</p> <p>You can select up to three sort fields (criteria).</p>
First sort by	<p>None Labroll Camroll Soundroll Scene Take Name</p>
Second sort by	<p>Same choices as First sort by</p>

Pull List Options (Continued)

Option	Description
Third sort by	KN Start Ink Number Auxiliary Ink DPX VFX Transfer TC1 (Start) Film TC Sound TC Auxiliary TC 1 through TC 5 TC 24 TC25P TC 30 ND TC 30 DF TC 30 NP Aux TC 24 TC 60
Order	Heads Out (ascending edge numbers) Tails Out (descending edge numbers)
Place separators	Controls where separators are placed in the list. The separator's appearance depends on the template; usually it appears as a horizontal line. First Sort Field Second Sort Field Keycode or Ink Prefix Prefix or every 1000 ft
Include Leader	Specifies whether to include leaders in the list.

Change List Global Options

Like the cut list, the change list has global options that apply across the entire change list, affecting all other list selections. Global options in the Change List tool are identical to those in the Cut List tool. For more information, see [“Cut List Global Options” on page 69](#).

Change List Options Common to All Lists

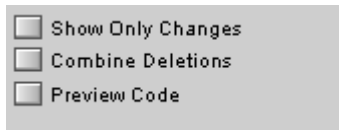
When you select a list name in the Change List tool (except for Global), the Options pane shows the options for the list type. Most options are the same for all the list types; these common options appear at the top of the display.

These options are identical to the common options on the Cut List tool. For more information, see [“Cut List Options Common to All Lists” on page 74](#).

List-Specific Change List Options

List-specific options appear at the bottom of the option display. The following sections explain the list-specific options for each of the list types available in the Change List tool.

Change List



The following table describes options specific to change lists.

Change List Options

Option	Description
Show Only Changes	Limits the entries in the change list to insertions, deletions, trims, and moves. There is no explicit indication of sections that remain unchanged. If this option is not selected, the change list also contains events that explicitly show sections that remain unchanged.
Combine Deletions	Forces each group of adjacent deletions to be combined into a single event. If this option is not selected, each deleted clip has its own event in the change list.
Preview Code	Displays preview code numbering. For more information on using preview code, see “Using Preview Code” on page 64 .

Change Pull and Change Discard Lists



The image shows a dialog box with the following options:

First sort by	Camera Roll
Second sort by	Lab Roll
Third sort by	Key Number (KN Start)
Order	Heads Out
Place separators	First Sort Field
<input type="checkbox"/>	Include Leader

Options for change pull lists and change discard lists are almost the same as the options for the pull lists on the Cut List tool. For more information, see [“Pull Lists” on page 80](#). The only difference is that the Include Leader option is not available for change pull and change discard lists.

Optical List

The options for optical lists on the Change List tool are the same as the options for optical lists on the Cut List tool. For more information, see [“Optical Lists” on page 79](#).

Appendix A

Preparing Sequences for FilmScribe

This appendix provides information to help you prepare your sequences in an Avid editing system so that FilmScribe can work with them successfully and you can maintain your sequences safely. It includes the following main sections:

- [Entering Film Information](#)
- [Preparing Sequences](#)
- [Tracking Frames Based on File Names](#)
- [Preparing QuickTime Movies](#)

Entering Film Information

The process of working in an Avid editing system includes entering information associated with the clips that you capture and the sequences that you build while editing. This information might be logged before you capture media or added to a bin later.

For film projects, some of this information is essential for capturing. You must have information in the Start and End video timecode columns. For transfers to NTSC video, you must have pulldown frame information in the Pullin column. Other film information is not essential to the basic editing workflow, but it might be necessary for your particular project.

You must enter any information that you want FilmScribe to include in a generated cut list or change list before you work with sequences in FilmScribe. You cannot alter Project settings, edit bin information, or add new bin headings within FilmScribe itself.

For example, if you need to present information such as Scene and Take numbers, camera rolls, or audio timecode as part of a cut list or change list, you must have entered the information into the bin, either through the logging process or by editing the bin manually.

For procedures about supplying this information, see the Help for your Avid editing system.



You can open a saved list in a text editor or a word processor and then edit the list to add information to it. You might find this useful for adding comments to aid the assistant editor or negative cutter, but it is not a practical way to add numbering information for every clip and event in the list.

Preparing Sequences

Depending on the type of list you are creating, and the stage of your project, you might need to prepare the sequences before working with them in FilmScribe. A normal workflow for each stage of list generation might be as follows.

Generating the First Cut List

To generate the first cut list for conforming a work print, do the following in your Avid editing system:

1. Make sure the tracks you want are selected.
2. Remove any unwanted add edits (match-frame edits) by removing match-frame edits.
3. Duplicate the sequence and place the original sequence in an archive backup bin.
4. Keep the copy of your sequence in a current cuts or a work-in-progress bin, and generate lists in FilmScribe from the archived original.

For the work in progress, you can keep the file name extension *.Copy01*, created when you duplicated the sequence, as a way of indicating that it has been properly archived. You can also remove the word *copy*, but be sure to maintain the numbering of each successive cut so that you do not lose track.

Generating a Change List

As you continue working on the sequences, use the Change List tool to update the work print as necessary.

To generate a change list for a conformed work print:

1. Make sure the tracks you want are selected in the new (revised) sequence, remove any unwanted add edits, copy the sequence, and place the original in the archive bin, as described in [“Generating the First Cut List” on page 86](#).
2. Use successive versions of the sequence stored in the archive to generate the change lists. Try to maintain one sequence version for each time you conform the work print.

Comparing and Combining Cuts and Reels

Often in the later stages of editing, you might need to compare several cuts or versions or to combine two or more reels that have already been conformed. Tips and techniques for preparing and managing multiple sequences are described in [“Working with Multiple Cuts and Reels” on page 62](#).

Generating a Final Cut List

When you are ready for the final cut, you can prepare the sequences and generate lists and other reference elements for the negative cutter.

To generate a final cut list:

1. Make sure the tracks you want are selected, and remove any match frames (add edits).
2. Back up your project and bins.
3. Record a digital cut to tape, preferably with burn-in, as described in the Help for your Avid editing system.
4. Prepare assemble lists for each reel by key number.

Tracking Frames Based on File Names

Bins can display a digital file name for each frame in addition to key numbers, ink numbers, and other reference numbers. Tracking frames with the frame number is useful in the film scanning process, where each frame is an independent file. It is also useful when working with effects and animation processes that are dependent on a frame-based counting scheme. You can include the frame number when you generate a cut list using FilmScribe.

The naming and counting scheme consist of a prefix (8-character maximum), separated by a dash (-), and followed by 6 characters that count as total frames. For example, FXS32v01-000001 identifies the first frame of a series of frames that belong to an FX shot for Scene 32 version 1. As the FX shot progresses during the creative process, the version number increases.

To display the frame count numbers in a bin and cut list:

1. In the Film Settings dialog box of the Avid editing application, select Frame Count from the “Ink Number Default Edge Type” option or the “Auxiliary Ink Default Edge Type” option.
2. In a bin, select Ink Number or Auxiliary Ink from the Bin Headings dialog box.

The Ink Number and Auxiliary Ink columns display the frame count numbers in the bin.

3. Open the bin in FilmScribe and choose Ink Number or Aux Ink options. Then generate the cut list.

The cut list includes the frame count numbers.

Preparing QuickTime Movies

To take advantage of FilmScribe’s image thumbnail and movie playback features, you need to export your sequences from your Avid editing system as QuickTime movie files, and make those files available for FilmScribe to read them. For more information, see [“Viewing Sequences as QuickTime Movies” on page 53](#).

Preparing Sequences for Export

To help speed up the export and keep your data safe, consider doing the following to prepare your sequence before you export:

- ▶ Make sure all media for the sequence are online.
- ▶ Archive the sequence. Duplicate the sequence, place the duplicate in another bin, and prepare the duplicate for export. The original sequence is unaffected.
- ▶ Render all effects. Any unrendered effects are rendered on export, but this can take extra time during the export process.
- ▶ Mix down multiple video or audio tracks for faster export, unless you need to preserve the multiple track information.

Exporting QuickTime Files

For information about exporting QuickTime movies from your Avid editing application, see the Help for that application. In general, use settings that create a QuickTime movie that is easy to display over an internet connection. For example, the Same As Source option creates a large file that might take too long to display over an internet connection.



Certain characters create problems for FilmScribe when it searches for file names. Do not use a slash (/) or a colon (:) in the names of sequences that you plan to save as QuickTime movies.

Guidelines for File Naming

When FilmScribe generates a cut list that includes frame image information, it searches for the QuickTime movie by looking for a specific file name in a specific location.

The file name that FilmScribe searches for is the first eight characters of the name of the sequence itself, followed by the QuickTime file name extension that identifies the movie format. For example, if you have a sequence named “Program1,” FilmScribe searches for an associated movie file named “Program1.mov”.

This file name format is the one your Avid editing system uses by default when it saves the movie file. The simplest way to handle movie file names is to accept this default name when you export, so that FilmScribe finds it automatically when it searches.

If you want to change the file name or use a longer name, you can still find the file in FilmScribe. When FilmScribe does not find the movie file, it allows you to browse for the movie using the Open dialog box (Windows) or Directory dialog box (Macintosh) to specify the file name.



Certain characters create problems for FilmScribe when it searches for file names. Do not use a slash (/) or a colon (:) in the names of sequences that you plan to save as QuickTime movies.

Guidelines for File Location

FilmScribe creates a folder called Sequence Movies within the FilmScribe folder. This is the default location that FilmScribe searches for movie files.

The simplest way to handle movie files is to place them in this folder so that FilmScribe can find them automatically. If you can navigate to this folder when you export the movie from your Avid editing system, you can save the movie to the folder directly. Alternatively, you can move the movie to this folder later.

If you want to keep your movie files in a different location, you can still find them in FilmScribe. When FilmScribe does not find the file in the Sequence Movies folder, it allows you to search for the movie using the Open dialog box (Windows) or Directory dialog box (Macintosh) to browse the full directory structure available on your computer.

When you are deciding where to locate your movie files, remember that their playback is affected by the time your computer takes to access them. Movies stored on a hard drive on the computer running FilmScribe play better than movies stored on slower storage media or stored elsewhere on a network.

Glossary

24p or 25p	24-fps or 25-fps progressive media. The progressive media file is composed of single frames, each of which is vertically scanned as one pass. The Avid system creates 24p or 25p media by combining (deinterlacing) two video fields into a single full, reconstructed frame. For NTSC film-to-tape transfers, the system creates 24p media by undoing the 2:3 pulldown inserted by the telecine process, removing the extra fields, and creating progressive frames.
bin	A database in which master clips, subclips, effects, and sequences are organized for a project in an Avid editing system. A file structure that contains other files, including sequences, and is analogous to a folder or a directory in other computer applications.
black edits	1. A video source with no image. 2. A special source you can fade into, out of, or use for other effects.
B-roll	An exact copy of the A-roll original material, or new original material on a separate reel, for use in A/B-roll editing.
conform	To make the final show based on the editing. Conforming organizes the source material for final assembly.
cut	An instantaneous transition from one video source to another. Also, a section of source or record tape.
dissolve	A video or audio transition in which an image from one source gradually becomes less distinct as an image from a second source replaces it.
DPX	Frame-counting field for Digital Picture Exchange, a SMPTE standard describing frames scanned from film. The format is the following: a descriptor of up to 32 alphanumeric characters, followed by a hyphen (-), followed by a six-digit frame count, for example, DPXChildDocu-023657.

Glossary

dupe list	A list of dupe reels. A view of this list is available only if options are set for creating a dupe list. You can set the options in the EDL Manager Options window.
dupe reel	A reel designated for the recording and playback of dupes (duplicate shots) during videotape editing. You create dupe reels as backup copies, to help in the creation of special effects, and for A/B-roll editing.
event	A number assigned by the editing system to each performed edit. In most computer editing systems, defines an action or a sequence of actions performed by the computer in a single pass of the record tape.
fade	A dissolve from full video to black video or from full audio to no audio, or vice versa.
fps	Frames per second, pronounced “fips.” A measure of the film or video display rates. (NTSC = 30 fps; PAL = 25 fps; SECAM = 25 fps; Film = 24 fps.)
handles	Additional source material before and after edit points; you use a handle for later adjustments.
import ID	The internal identification for your Avid source tape.
linear editing	Tape editing in which you assemble the program from beginning to end. If you require changes, you must rerecord everything downstream of the change. The physical nature of the medium (for example, analog videotape) dictates how you must place material on the medium. See also nonlinear editing .
LUT	File name of the color look-up table used for the series of clips or frames.
master list	A list that specifies the starting event number, reel ID options, and timecode options.
matchback conversion	The conversion from film to video frame rates.
nonlinear editing	A type of editing in which you do not need to assemble the program from beginning to end. The physical nature of the medium and the technical process of manipulating that medium do not enforce or dictate how the material must be physically ordered. You can use nonlinear editing for traditional film cutting and splicing, and captured video images. You can make changes at the beginning, middle, or end of the sequence. See also linear editing .

NTSC	National Television Standards Committee. The group that established the color television transmission system used in the United States. The standard calls for 525 lines of information scanned at a rate of approximately 30 frames per second.
overrecord	To use a long shot from one reel, then place shots from other reels over the continuous shot.
PAL	Phase Alternating Line. A color television standard used in many countries. PAL consists of 625 lines scanned at a rate of 25 frames per second.
patching	The routing of audio or video from one channel or track in the sequence to another.
reel ID	The reel identification (ID) FilmScribe uses to refer to the master reel source. The reel ID can come from tape, sound roll, camera, or auxiliary sources.
slicing and dicing	Isolating trouble spots in a sequence by repeatedly dividing the sequence in half, creating a cutlist for the isolated half, and testing for successful generation.
SMPTE	Society of Motion Picture and Television Engineers. One of the principal standards organizations for the film and video industry. See also timecode .
suite	Standard industry name for the site of editing. A room or rooms containing such equipment as the edit controller computer, videotape machines, monitors, an audio mixing board, a videotape switcher, and other peripheral devices.
super	Superimposition. One shot half-dissolved over another.
template	A set of FilmScribe options saved under a specific name. You can use templates to save settings you use frequently and apply them quickly.
timecode	<p>An electronic indexing method for editing and timing video programs. Timecode denotes hours, minutes, seconds, and frames (00:00:00:00) elapsed on a videotape.</p> <p>Address track timecode is recorded simultaneously with the video picture. Longitudinal timecode (LTC) is recorded on an audio track. Vertical interval timecode (VITC) is recorded in the vertical blanking interval of the video track. SMPTE timecode is the prevalent standard.</p>

Glossary

Other timecodes include film timecode and audio timecode used during film projects. During editing, an Avid editing system can display and track several types of timecode. See also [SMPTE](#).

- track isolation** The process of creating a separate list for each video track to simplify the composition.
- transfer** Frame-counting field for sources that have been prepped for transfer. The format is the following: a descriptor of up to 32 alphanumeric characters, followed by a hyphen (-), followed by a six-digit frame count, for example, TransferChildDocu-023657.
- UNC** Universal Naming Convention that specifies the location of resources on a server. The location you enter becomes a hyperlink to that location.
- VFX** Frame-counting field for visual effects. The format is the following: a descriptor of up to 32 alphanumeric characters, followed by a hyphen (-), followed by a six-digit frame count, for example, FXChildDocu-023657.
- wipe** A shaped transition between video sources in which a margin or border moves across the screen, wiping out the image of one scene and replacing it with another.

Index

A

- A/B-roll conforming
 - defined 19
- Adding
 - comments in cut lists 16
 - comments to lists 52
- Appearance of text in lists
 - changing 53
- A-roll conforming
 - defined 18
- Ascending order
 - in bins 36
- Assemble list
 - described 17, 18
 - options 43, 78
- Aux. Ink option (Cut List tool) 75
- Avid MediaLog 16, 65

B

- Bad Clip icon 28
- Bins
 - adding information to 16
 - adding ink numbers to 16
 - opening and closing 34
 - sorting items in 36
 - working with 34
- Blend effects 20

C

- Camera Roll option (Cut List tool) 75

- Change discard list
 - described 23
 - options 83
- Change list
 - common options 82
 - compared to cut list 14
 - creating across multiple reels 63
 - described 14
 - generating 87
 - global options 81
 - list-specific options 82
 - options 44
- Change List tool
 - changing options 46
 - closing 36
 - features 37
 - opening 36
- Change pull lists
 - described 23
 - options 80
- Changing
 - appearance of lists 53
 - list options 46
- Chroma key effect 20
- Clip Name option (Cut List tool) 75
- Clone effects 20
- Closing
 - bins 34
- Collapsing
 - lists 50
- Color look-up table (LUT) 77
- Combining
 - cuts and reels 87

Comments [16](#)
 Comparing
 cuts and reels [87](#)
 Controlling
 movie sequence play [54](#)
 Creating
 change lists across multiple reels [63](#)
 multiple sequence cut lists [62](#)
 Cut list
 adding comments in [16](#)
 common options [74](#)
 compared to change list [14](#)
 creating with multiple sequences [62](#)
 described [14](#)
 generating final [87](#)
 generating first [86](#)
 generating with matchback [68](#)
 global options [69](#)
 list-specific options [77](#)
 Cut list options
 common [75](#)
 global [69](#)
 sorting [80](#)
 Cut List tool
 changing options [46](#)
 closing [36](#)
 features [37](#)
 opening [36](#)
 Cut list types
 assemble list [18](#)
 dupe list [21](#)
 optical list [19](#)
 optical scene pull list [24](#)
 pull list [23](#)
 scene pull list [24](#)
 Cuts
 comparing and combining [87](#)
 working with multiple [62](#)

D

Delete Head icon [28](#)
 Delete icon [27](#)
 Delete Tail icon [28](#)

Descending order
 in bins [36](#)
 Digital cut
 when to use [14](#)
 Displaying
 movie frames in cut list [16](#)
 Dissolve icon [27](#)
 Dissolves
 laboratory-standard [19](#)
 supported in optical lists [20](#)
 Double-strand conforming
 defined [19](#)
 Dragging
 sequences from bins [40](#)
 Dupe checking across multiple reels [66](#)
 Dupe icon [27](#)
 Dupe list
 described [21](#)
 options [43](#), [79](#)

E

Editing
 16mm film [19](#)
 35mm film [18](#)
 Edits
 icons for [27](#)
 EDL (edit decision list) [14](#)
 Effects
 supported by optical list [19](#)
 Entering
 film information [85](#)
 Expanding
 lists [50](#)
 Exporting
 QuickTime movies to FilmScribe [89](#)

F

Fade In icon [27](#)
 Fade Out icon [27](#)
 Fades
 laboratory-standard [19](#)
 supported in optical lists [20](#)

File location
 guidelines for movie files 90

File names
 guidelines for movie files 89

Film
 editing 16mm 19
 editing 35mm 18
 masks 21
 optical lists 19
 types of lists 14

Film information
 entering 85

FilmScribe folder
 default location for movies 90

Final cut list
 generating 87

Flips and flops 20

Frame count numbers
 tracking with ink numbers and file names 88

Frame images
 in lists 16

Frame reference numbers 15

G

Generating
 cut list with matchback 68
 lists 48

Getting sequences from bins 40

Global options 43

H

Head frames 16

Heading bars
 in lists 50

Highlighting
 text in lists 52

HTML cut list or change list 57

Hyperlinks in WebLists template 57

I

Icons
 in lists 27

using to represent edits 27

Image thumbnails 53

Ink number list
 when to use 14

Ink numbers
 adding to bins 16
 displaying frame count numbers 88

Ink Numbers option (Cut List tool) 75

Insert Head icon 27

Insert icon 27

Insert Tail icon 28

Interface 31

K

KEM roll 28

Key number list
 when to use 14

Key Numbers option (Cut List tool) 75

L

Lab Roll option (Cut List tool) 75

Laboratory-standard effects 19

List headings bars 50

List options
 changing 46
 selecting 43

List Summary navigation 51

List Summary option 51

List window
 status bar 50
 working in 49

Lists
 adding comments to 52
 changing appearance of 53
 changing fonts in 53
 contexts for using 13
 custom titles for 37
 expanding and collapsing 50
 frame images defined 16
 frame reference numbers in 15
 generating 48
 icons in 27
 previewing 48

- printing 56, 57
- renaming 43
- saving 56
- types of 13, 14
- understanding 37
- viewing 48

Lists pane (Cut List and Change List tools) 37

Locator comments 16

Logging

- film information 85

Luma key effect 20

LUT (color look-up table) 77

M

Masks

- film 21

Matchback 66–68

Matchback Info Option (Cut List tool) 73

Matte key effect 20

Media Offline icon 27

MediaLog 16, 65

Menus

- described 31
- general 31
- window-specific 32

Movie files

- file location guidelines 90
- file name guidelines 89

Movie sequences

- controlling play of 54
- opening 54

Multiple reels

- and cuts 62
- combining 87
- creating change lists with 63
- dupe checking across 66

Multiple sequences

- creating cut lists from 62

N

Numbers

- for reels 63
- frame reference 15

O

Opening

- bins 34
- Cut List and Change List tools 36
- movie sequences 54
- saved lists 57
- settings 46

Optical icon 27

Optical list

- effects supported in 19
- options 43, 79
- when to use 14

Optical Media icon 27

Optical scene pull list 24

Optional lists 17

P

Paint effects 20

Picture Conforming option (Cut List tool) 70

Picture-in-Picture effect 20

Play/Pause button (Movie window) 54

Preparing

- QuickTime movies for FilmScribe 88
- sequences for FilmScribe 86

Preview button 38, 48

Preview code

- described 64
- tracking changes with 65

Previewing

- lists 48

Printing

- lists 56

Pull list

- described 17, 23
- options 43, 80
- when to use 13

Q

QuickTime movie sequences 16

QuickTime movies

- exporting to FilmScribe 89
- preparing for FilmScribe 88

viewing sequences in 53

Quitting

FilmScribe 30

R

Reels

comparing and combining 87

multiple, working with 62

numbers for 63

Removing

settings 47

Renaming

lists 43

S

Saved lists

opening 57

Saving

lists 56

Scene pull list 24

Segment effects 20

Selecting

list options 43

tracks in Cut List and Change List tools 42

Sequence Movies folder 90

Sequences

dragging from bins 40

preparing for FilmScribe 86

viewing as QuickTime movies 53

Sequences pane (Cut List and Change List tools) 37

Settings

saving 46

using 46

Single-layer effects 21

Single-strand

conforming 18

Single-strand conforming

defined 18

Slider (Movie window) 54

Sorting

items in bins 36

Sorting option (Cut List tool) 80

Sound Conforming option (Cut List tool) 71

Sound Roll option (Cut List tool) 75

Standard film effects 20

Starting

FilmScribe 30

Status bar

in List window 50

Step Back button (Movie window) 54

Step Forward button (Movie window) 55

Superimposition effect in optical list 19

Switching

sort order in bins 36

T

TabbedLists

generating 62

Template option (Cut List tool) 69

Templates

TabbedLists, generating 62

WebLists, hyperlinks in 57

Text

changing in lists 53

highlighting in lists 52

Thumbnail images 16

Title effect 20

Title text box (Cut List and Change List tools) 37, 43

Tracking

changes with preview code 65

Tracking frames with frame numbers 88

Tracks

selecting in Cut List and Change List tools 42

Tracks pane (Cut List and Change List tools) 37

U

UNC Path 77

Universal Naming Convention (UNC) path 77

V

VFX (Visual Effects)

format for 77

Viewing

lists 48

sequences as QuickTime movies 53

Visual Effects (VFX)
format for [77](#)

W

Weblists
generating [57](#)

Windows
types in FilmScribe [33](#)

Workflow
in FilmScribe [29](#)