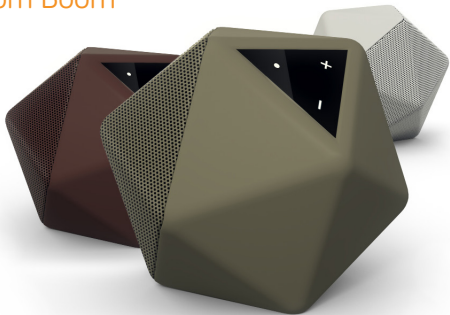


You are holding something special

Boom Boom is a beautiful, simple, friendly magical speaker. Think of it as a useful piece of technological gear which bonds with you over time like a cute little dog would do. Its not quite human, but its willing to help a human. Thats what its designed for. It was born to share an emotional bond with a human. You need to understand that a Boom Boom is only "a Boom Boom" in the beginning, becoming YOUR Boom Boom through your time with it.

I guess that's why its said to be not only likable, but lovable.

About your Boom Boom



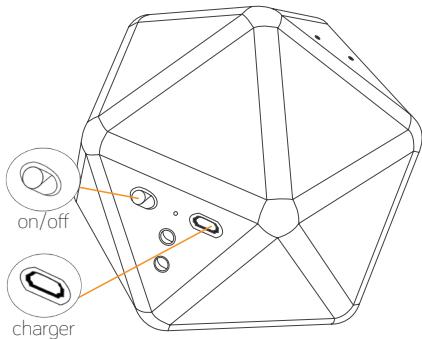
Powering on / Charging

Hold the switch for a short bit

You will hear hello :)

You're on !

To charge, plug in the USB
cable. Thats about it !

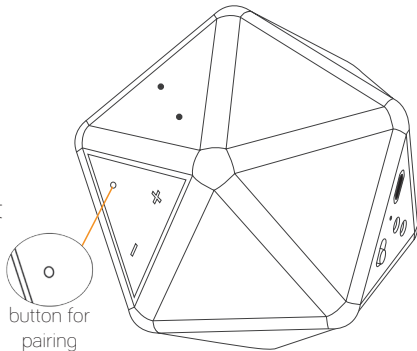


Connecting wirelessly

Hold the pairing button for a few seconds.

The light should start to blink and it will tell you to search for it in your device.

Pair it and you're done !



Using the Audio cable

The cable is universal!

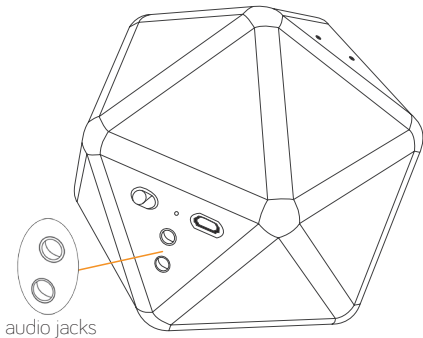
Use it from either side you want

Plug one end to your device

Leave the other in Boom

Boom

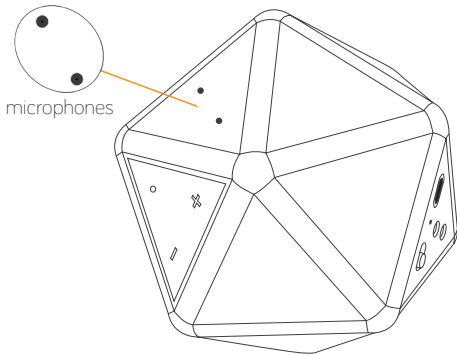
Voila!



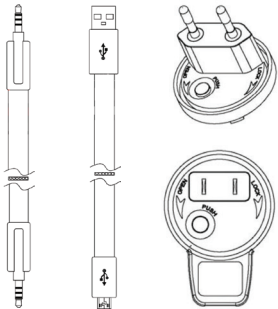
Conferencing

You can have amazing talks
with
your Boom Boom !

Simply plug in the audio
cable
and place a call.



Accessories



In the box you will find:

your Boom Boom
a 3.5mm audio cable
a USB charging cable
a charger
your local charging plug

The App



Boom Boom comes with a smartphone app !



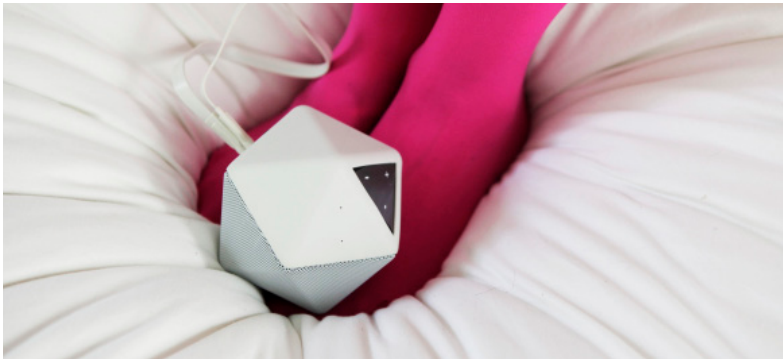
Change languages

Get support

Change mood

Browse through voices

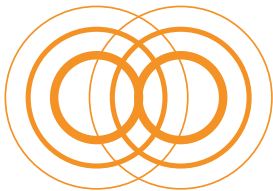
and much more to come !



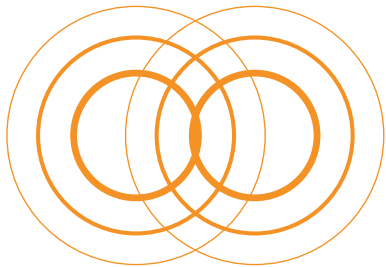
Find out more



www.binauric.com/boomboom



Binauric SE
Am Söldnermoos 17
Hallbergmoos
Germany



LIMITED WARRANTY

Binauric One (1) Year Limited Warranty – BOOM BOOM !

THIS WARRANTY DOES NOT AFFECT YOUR STATUTORY RIGHTS

Your BOOM BOOM ! is warranted against defects in materials and workmanship for a period of ONE (1) YEAR from the date of original retail purchase ("Warranty Period"). If a defect arises during the Warranty Period, Binauric, at its option and to the extent permitted by law will

- (1) repair the product at no charge using new parts or parts that are equivalent to new in performance and reliability,
- (2) exchange the product with a functionally equivalent product that is new or equivalent to new in performance and reliability,
- (3) refund the original purchase price.

This warranty excludes damage resulting from abuse, accident, modifications or other causes that are not defects in materials and workmanship.

TO THE EXTENT PERMITTED BY APPLICABLE LAW BINAURIC IS NOT LIABLE FOR ANY DIRECT, INDIRECT, INCIDENTAL OR CONSEQUENTIAL DAMAGES ARISING OUT OF THE USE OF SERVICE OF THE PRODUCT. THE WARRANTY AND REMEDIES DESCRIBED ABOVE ARE EXCLUSIVE AND IN LIEU OF ALL OTHER WARRANTIES, REMEDIES AND CONDITIONS, WHETHER ORAL, WRITTEN, EXPRESS, STATUTORY OR IMPLIED. TO THE EXTENT PERMITTED BY APPLICABLE LAW BINAURIC DISCLAIMS ALL IMPLIED AND STATUTORY WARRANTIES, INCLUDING, WARRANTIES OF MERCHANTABILITY AND FITNESS FOR A PARTICULAR PURPOSE. IF IMPLIED WARRANTIES CANNOT BE DISCLAIMED, THEN SUCH WARRANTIES ARE LIMITED IN DURATION TO THE DURATION OF THIS WARRANTY.

Any recovery is limited to the original purchase price. No other person is authorized to modify this limited warranty and your seller is solely responsible for any other warranties.

Some states do not allow limitations on how long an implied warranty lasts, or allow exclusion or limitation of incidental or consequential damages, so the above limitations or exclusions may not apply to you. This warranty gives you specific legal rights, and you may also have other rights, which vary from jurisdiction to jurisdiction.

To obtain warranty service, contact Binauric using the information described at <http://www.binauric.com/support>. Proof of purchase may be required to verify eligibility.

Federal Communications Commission Requirements

This device complies with FCC radiation exposure limits set forth for an uncontrolled environment.

This device complies with Part 15 of the FCC Rules. Operation is subject to the following two conditions: (1) this device may not cause harmful interference, and (2) this device must accept any interference received, including interference that may cause undesired operation.

Caution !

Any changes or modifications not expressly approved by the party responsible for compliance could void the user's authority to operate the equipment.

FCC Radiation Exposure Statement

This equipment has been tested and found to comply with the limits for a Class B digital device, pursuant to part 15 of the FCC Rules. These limits are designed to provide reasonable protection against harmful interference in a residential installation. This equipment generates uses and can radiate radio frequency energy and, if not installed and used in accordance with the instructions, may cause harmful interference to radio communications. However, there is no guarantee that interference will not occur in a particular installation. If this equipment does cause harmful interference to radio or television reception, which can be determined by turning the equipment off and on, the user is encouraged to try to correct the interference by one or more of the following measures:

- Reorient or relocate the receiving antenna.
- Increase the separation between the equipment and receiver.
- Connect the equipment into an outlet on a circuit different from that to which the receiver is connected.
- Consult the dealer or an experienced radio/TV technician for help.

Canada Statement

This device complies with Industry Canada licence-exempt RSS standard(s). Operation is subject to the following two conditions: (1) this device may not cause interference, and (2) this device must accept any interference, including interference that may cause undesired operation of the device.

Le présent appareil est conforme aux CNR d'Industrie Canada applicables aux appareils radio exempts de licence. L'exploitation est autorisée aux deux conditions suivantes : (1) l'appareil ne doit pas produire de brouillage, et (2) l'utilisateur de l'appareil doit accepter tout brouillage radioélectrique subi, même si le brouillage est susceptible d'en compromettre le fonctionnement.

The device meets the exemption from the routine evaluation limits in section 2.5 of RSS 102 and compliance with RSS-102 RF exposure, users can obtain Canadian information on RF exposure and compliance.

The device meets the exemption from the routine evaluation limits in section 2.5 of RSS 102 and compliance with RSS-102 RF exposure, users can obtain Canadian information on RF exposure and compliance.

Le dispositif rencontre l'exemption des limites courantes d'évaluation dans la section 2.5 de RSS 102 et la conformité à l'exposition de RSS-102 rf, utilisateurs peut obtenir l'information canadienne sur l'exposition et la conformité de rf.

This equipment should be installed and operated with a minimum distance of 20 centimeters between the radiator and your body.

Cet équipement devrait être installé et actionné avec une distance minimum de 20 centimètres entre le radiateur et votre corps.

Europe - EU Declaration of Conformity

The equipment complies according to the Radio Equipment and Telecommunications Terminal Equipment Directive 1999/5/EC.

This equipment meets the following conformance standards:

USA

- FCC Part 15.B
- FCC Part 15.C

Canada

- IC ICEES-003
- RSS210

EU (CE)

- EN55013/20
- EN301489-1-17
- EN300328
- EN60950

Japan

- MIC J55020
- VCCI

Australia/New Zealand

- CISPER 13
- AS/NZS4268

MFI (Made for iPod/iPhone)

Bluetooth

- EPL (End Product Listing)

WEEE (Waste Electrical and Electronic Equipment Directive)

RoHS (Restriction of Hazardous Substances Directive)

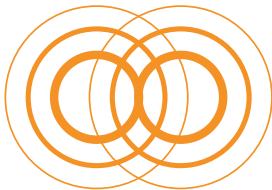
Your BOOM BOOM ! Serial number, keep it safe! :)



Find out more



www.binauric.com/boomboom



Binauric SE
Am Söldnermoos 17
Hallbergmoos
Germany