

*Hoxton Press*

APARTMENT FINDER MANUAL

## Contents

General Notes	3
Starting the Application	4
Setting up a Profile	5
Application Operation	6
Overview Screen	7
Masterplan Screen	8
Location Screen	9
Gallery Screen	10-12
Finder Screen	13
Admin Screen	14
Troubleshooting	15
Contact details	16

## General Notes

The apartment finder application can be found on the touch screen attached to the model.

## Starting the application



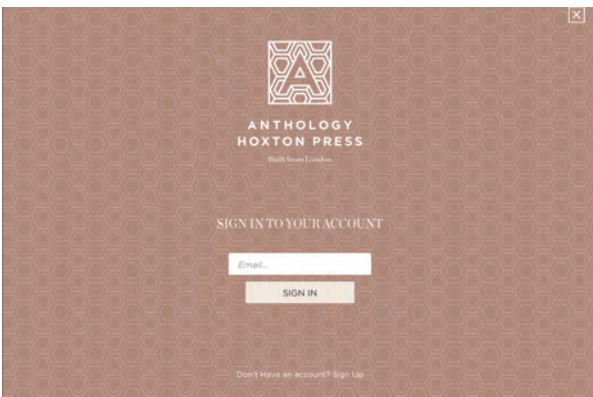
The application may need a few seconds to open.

Touch te screen to start the application.

## Setting up a Profile

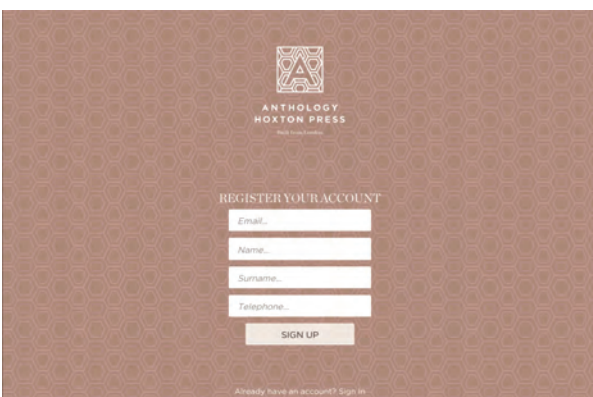
### Customer Login Screen

#### Returning Customers



Returning customers can enter their email address in the box provided. The previous session will be then continued.

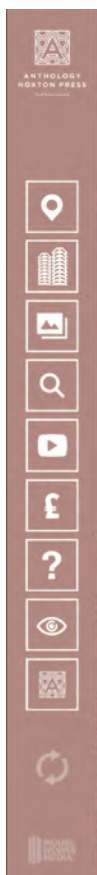
#### New Customers



New users can register using Registration Panel. All new customers should provide their Name, Email, and Phone number in order to proceed with the registration.

## Application Operation

Every icon visible on the left side of the application is dedicated to each screen. All icons will appear when pressing Overview icon; available on the top left.



**Overview** - An introduction to the development

**Location** - Interactive maps for the development.

**Masterplan** - Shows current stage of the development.

**Gallery** - Interactive gallery with exterior CGIs, interior photography, Lifestyle images.

**Finder** - 3D interactive apartment finder.

**Video** - Video about the development

**Price** - Appartments Price List

**Did you know?** - Additional information about the development.

**Panorana** - Estimated view from each floor of the development.

**About** - Information about Developer

**Restart Session** - should be used every time new user is added.

**Admin Panel** - To access hold the button for a few seconds.

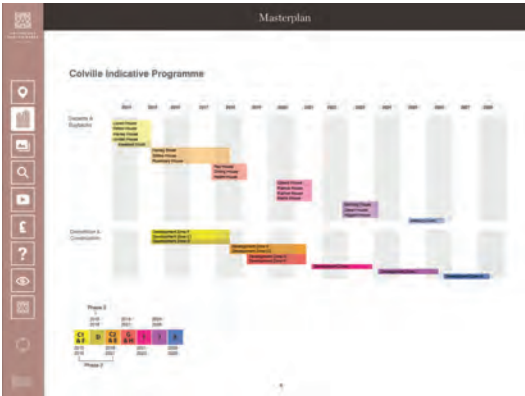
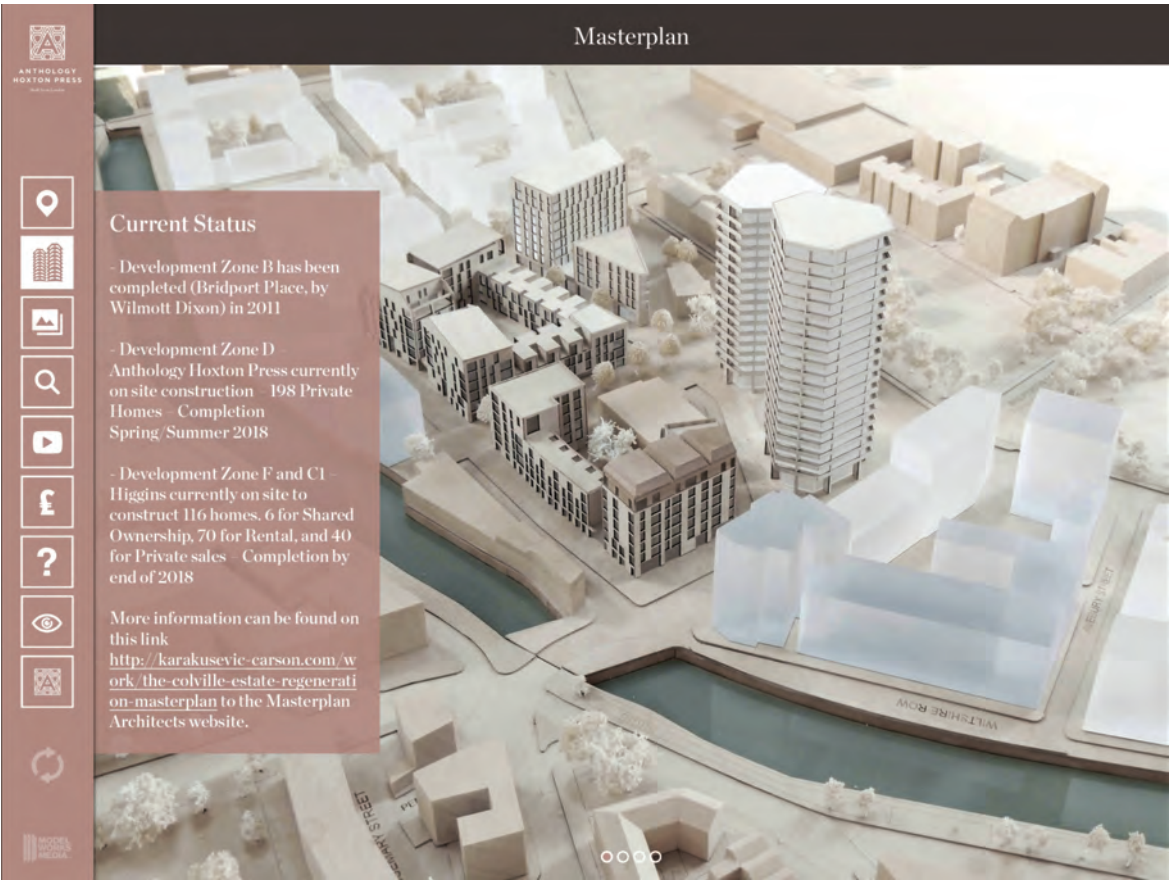
# Overview Screen

Introductory information about Anthology Hoxton Press and the area.



# Masterplan view - Current Status

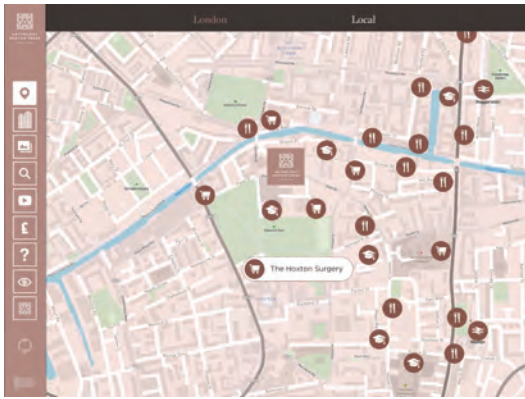
Masterplan view screen shows location of each development zone with a brief information about them. Additional information like Construction/Demolition Phasing or Program of the whole development can be displayed when swiping left and right on the screen.





## Location Screen

The location screen includes maps for the London and Local Areas. Each map can be panned and zoomed. A key to the map is located on the left side of the application.



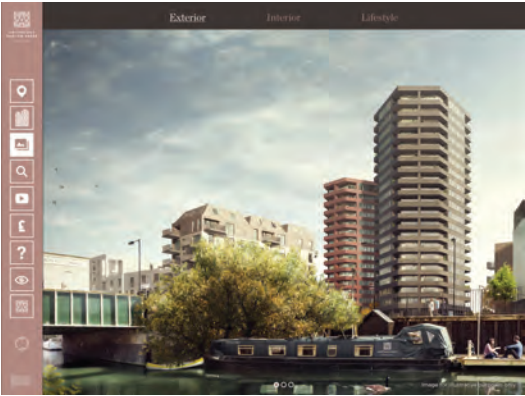
City map with the development location and local attractions and commercial spaces.



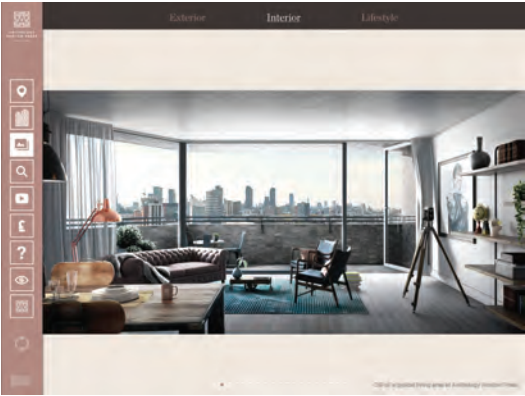
City Map with the development location and surrounding iconic buildings.

# Gallery Screen

The gallery screen includes exterior CGI images of the development and interior photography of the concept apartments. Browsing images is possible using swiping gesture.



Exterior views of the development.



Interior views of the development.



Lifestyle views from the aread of the developments.

## Finder Screen

The apartment finder is comprised of an interactive 3D model that can be orbited to view the site from any angle.

Described moves can be used while viewing the model;

Single finger drag to pan around and pinch to zoom.

The reset button will reset the camera view as well as all search filters (see below).

A compass that provides orientation, and helps when looking at the site in conjunction with the scale model is located on the top right.

Search tab : Enter plot number then press GO. Press C to clear the search field. PLEASE NOTE: You need to select one of the Buildings first

Filter tab : Pick a Building, Floor number, number of Bedrooms and Status to continue.

If conditions have been changed since the previous search, the List and Search buttons will highlight. Pressing each of them will show the search result in a list view or in 3D.

Result plot(s) will be shown in a Xray mode. Tapping on any of the apartment volumes will select it and bring up the Info panel.

The Info panel provides information such as Quad, Floor number, Bedroom count, stories and area dimensions, as well as pricing and sales status. Pressing the Floor Plan button will bring up the floor plan for the selected apartment.

Plot details and dimensions are displayed in the floor plan view. There are 2 buttons located on the bottom right. The exclamation mark button shows the disclaimer and the heart button adds chosen plot to favourites.

Current plot view can be minimized by pressing cross button located in the top right corner.

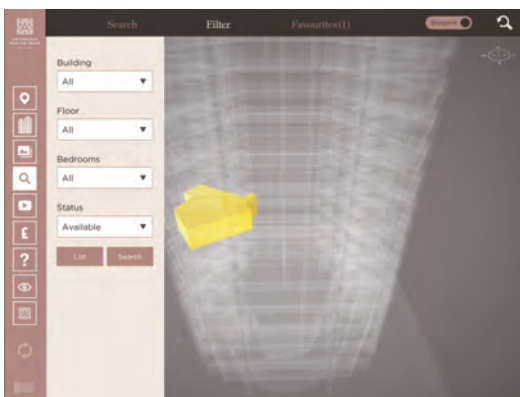
The favourite tab shows all saved apartments in either list or grid view. Choosing any will bring up the floor plan gallery allowing quick comparison between saved apartments. You can also clear all favourites from here.

Xray toggle: During every search, the Xray model will be displayed to show result apartment(s). The preferred view can be chosen ( 3D or Xray-Blueprint) by pressing the relevant button located on the top right.

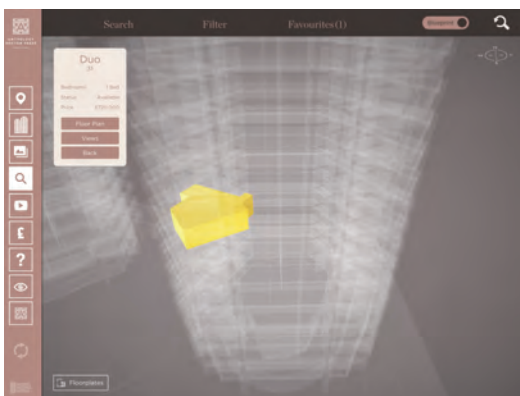
## Finder Screen



### Keypad search



Every new search with different conditions than the previous one will result in List and Search buttons being highlighted. Pressing each button will show the search result in a list view or in 3D as shown in the screenshot above.



Result plot(s) will be shown in a Xray mode. Tapping on any of the apartment volumes will select it and bring up the Info panel.



Floor plan view including info panel (press the X on the panel to minimise), dimensions toggle, disclaimer button and favourite button. Press X top right-hand corner to close.

Swipe left and right to view each floor.

# Finder Screen



Disclaimer open (“!” icon) - tap “X” to close.



Dimensions panel provides an apartment size as well as dimensions of each room. It also shows the location of the apartment on the building floor.



Favourites tab can be displayed as both list and thumbnail gallery. The favourites list is identical in terms of functionality to the filters list view. Navigate between the favourite displays using the tabs at the top. Press CLEAR to clear your favourites. Press X to leave favourites.



Filter tab with a list view. Tap the column headings to sort. Press a row to select an apartment. Swipe up and down to navigate the list or use the scroll bar on the right. Press “X” to close.



## Admin Screen

This screen can be accessed by pressing and holding the Model Works Media logo located at the bottom left of the screen. Admin screen can be used to input settings for the back end control of the application. It is advised not to change setting chosen during installation.

Admin screen can be used to show/hide apartments pricing and sales status in the application.



**Foreign Release Control:** To get information about units the 4-digit code needs to be entered. It can be obtained from Anthology. The application will not display units without this code. If the application shows wrong units, please contact Anthology to troubleshoot apartments.

**Sending Emails with favourites plots** can be Enabled/Disabled using email button in Favourites.

**If All assets need to be redownloaded:** Old galleries and floor plans should be wiped from the application. New ones should be then downloaded. This procedure should only be used when floor plan/gallery image is corrupted.

## Troubleshooting

## Contact details

In the event of an issue with the system, please email us  
at: **support@modelworksmedia.com**

In case of emergency contact one of our personel:  
Xin Leng : +44(0)7525 028 419