



G-Technology®

USER MANUAL

G | SPEED® eS PRO

High-Performance RAID Solutions for HD/2K Production



g-technology.com

Table of Contents

Safety & General Use

Safety Precautions.....4
 Backup Your Data5

About Your G-SPEED eS Pro

Introduction7
 What's in the Box8
 System Requirements8
 Overview of the Drive9
 Overview of the Controller9

Using Your Drive

Drive LED Operation.....11
 Warning LED and Alarms11
 Disconnect the Drive12
 Windows Use.....12

Using ATTO R680 RAID Controller

Download ATTO RAID Software14
 Install ATTO Driver & ConfigTool14
 Install ATTO Controller.....15
 Attach eS Pro to ATTO Controller.....15
 Add Second G-SPEED eS Pro Unit.....16
 Uninstall ATTO Driver & ConfigTool16

Configuring G-SPEED eS Pro

RAID Configuration Scripts for Mac18
 Use the ATTO ConfigTool19
 Change the RAID Mode.....21
 Configure Two RAID Units26
 Set Up Alert Notifications.....31

Maintenance for your Drive

Replace a Failed Disk Drive33
 Initialize Drive for Mac36
 Restore the Drive Icon39
 Reformat with Partitions.....41

Appendix

RAID Levels Explained46

Support & Warranty

Technical Support48
 Limited Warranty49
 Copyright.....51

G | SPEED[®] eS PRO

Safety & General Use

- Safety Precautions p.4
- Backup Your Data p.5



Safety Precautions

G-SPEED eS Pro's warranty may be void as a result of the failure to respect the precautions listed here. If you detect a problem with your drive, please contact our **Technical Support department**.

*If the product is returned with damage caused by improper handling, the warranty will be void and liability will rest with the user. Please read our **Limited Warranty**.*

- **Servicing:** Your drive contains no user-serviceable parts. If it appears to be malfunctioning, have it inspected by a qualified Technical Support representative.
- **Moisture:** Place the device away from moisture or liquids. To reduce the risk of damage, do not expose this drive to rain or moisture. Do not use it in damp or wet conditions. Never place objects containing liquids on the drive as they may spill into its openings.
- **Ventilation:** Place the device in a vented area. The drive should never be placed near or over a radiator or heat source.
- **Temperature:** Do not expose this drive to temperatures outside the range of 5°C to 35°C (41°F to 95°F); or to operational humidity beyond 5-80%, non-condensing, or non-operating humidity beyond 10-90%, non-condensing. Avoid placing your drive near a source of heat, or exposing it to sunlight (even through a window), or in an environment that is too cold or humid.
- **Physical Damage:** Do not place heavy objects on the drive. Never use excessive force on your drive.

Backup Your Data

The disk drive contained in your G-SPEED eS Pro device is a delicate electronic instrument and is susceptible to damage due to excessive physical shock. Under no circumstances will G-Technology be held liable for the recovery or restoration of lost data. Any loss, corruption or destruction of data while using a G-Technology drive is the sole responsibility of the user.

Make Two Backups

To help prevent the loss of your data, we highly recommend that you keep TWO copies of your data in separate storage locations. When in RAID 1, 5 or 6 (Protected mode), G-SPEED eS Pro will safeguard your data from hard drive failure. However, if any file system corruption occurs, the data contained on G-SPEED eS Pro may be affected.

For critical data, it is recommended to keep one copy on G-SPEED eS Pro and a second copy on another storage device.

G|SPEED[®] eS PRO

About Your G-SPEED eS Pro

· Introduction	p.7
· What's in the Box	p.8
· System Requirements	p.8
· Overview of the Drive	p.9
· Overview of the Controller	p.9



Introduction

Thank you for purchasing G-SPEED eS Pro from G-Technology.

Specifically designed for professional content creation applications, G-SPEED eS Pro features a high-speed mini-SAS interface. The storage system provides RAID 0, 1, 5, 6 and JBOD functionality when used in conjunction with the ATTO ExpressSAS R680 PCIe mini-SAS RAID controller.

Two G-SPEED eS Pro units can be attached to the ATTO R680 RAID controller for incredible performance.



What's in the Box

The following items are included in the box:

- G-SPEED eS Pro storage system
- 4 removable SATA drive modules (installed in unit)
- (2) disk module keys
- 2-meter mini-SAS cable
- AC Power cable
- Quickstart Guide

Optional purchase: ATTO R680 PCIe x8 RAID controller

If any items are missing, please contact G-Technology at support@g-technology.com or call (888) 426-5214.

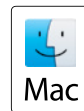
Download the latest G-SPEED eS Pro manual and ATTO software at:
www.g-technology.com/support/gspeed_es_pro/



System Requirements

G-SPEED eS Pro and the ATTO R680 RAID controller support the following Operating Systems. The drive is set up at the factory for use with Mac OS® X systems, and formatted as 'HFS+'.

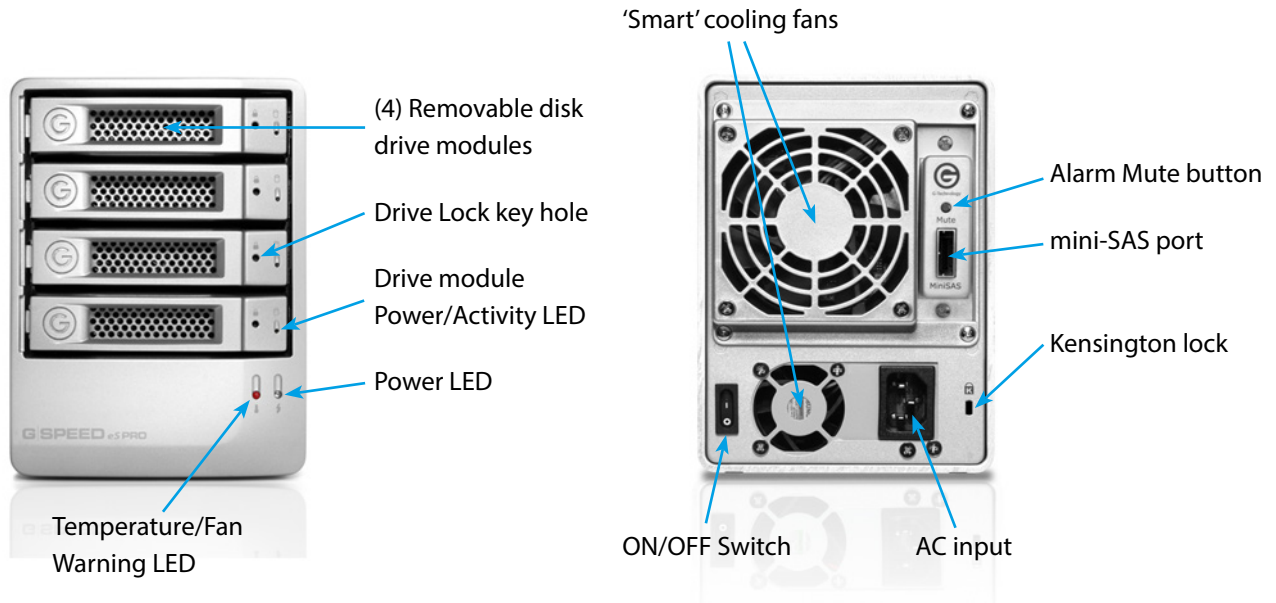
- Mac OS® 10.9 +
- Windows® 10, Windows® 8.1 and Windows® 7



NOTE: The ATTO ConfigTool makes it possible to create RAID groups up to 16TB that are compatible with Windows XP. For more information, please refer to the chapter [Using ATTO R680 RAID Controller](#).

Overview of the Drive

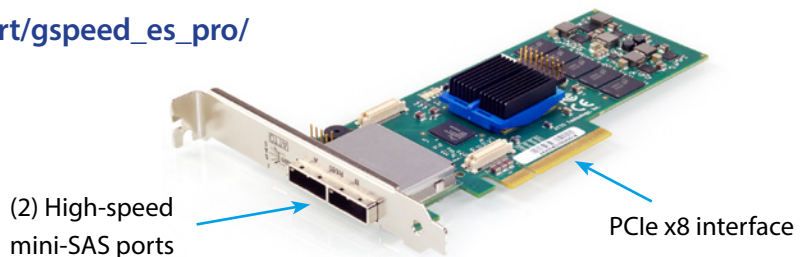
G-SPEED eS Pro ships from the factory configured in RAID 0 for use with the ATTO R680 RAID controller. The RAID controller also supports RAID 1, 5, 6 and JBOD configurations. If you wish to change the RAID mode, please refer to [Change the RAID Mode](#). For an explanation of supported RAID levels, please refer to [RAID Levels Explained](#).



Overview of the Controller

The ATTO R680 RAID controller connects your G-SPEED eS Pro to a Mac or Windows workstation, and also provides RAID 0, 1, 5, 6 and JBOD functionality.

Download the latest ATTO software at:
www.g-technology.com/support/gspeed_es_pro/



G | SPEED® eS PRO

Using Your Drive

- Drive LED Operation p.11
- Warning LED and Alarms p.11
- Disconnect the Drive p.12
- Windows Use p.12



Drive LED Operation

Under normal operation, each G-SPEED eS Pro drive module has an LED that glows blue indicating a connection to the RAID controller. The LED will flash brighter when the drive is being accessed.



Drive module
Power/Activity LED

Warning LED and Alarms

The G-SPEED eS Pro enclosure is equipped with an audible alarm that sounds when:

- The internal temperature of the G-SPEED eS Pro enclosure exceeds a temperature of 60° centigrade, and/or
- The main cooling fan fails, or the RPM of the fan slows to a state where the fan can no longer adequately cool the system.

To silence the alarm, push the Mute button located on the back of the G-SPEED eS Pro, as shown at right.

In addition to the audible alarm, the Temperature/Fan Warning LED located on the front bezel of G-SPEED eS Pro will illuminate.

If you hear an audible alarm and see the RED warning LED on the front of G-SPEED eS Pro, stop using G-SPEED eS Pro and contact [G-Technology support](#).



Alarm
Mute
button

Disconnect the Drive

It is not recommended to disconnect G-SPEED eS Pro while your system is running. First power off your system, and when it is completely powered down, turn off the G-SPEED eS Pro. It is then safe to unplug the drive from your system.

Windows Use

G-SPEED eS Pro is set up at the factory for use with the ATTO R680 RAID controller and formatted for Mac OS X systems. The ATTO controller is also compatible with Windows systems, and G-SPEED eS Pro can be reformatted to work with Windows as well.

Please refer to the ATTO R680 RAID controller documentation for instructions on installing for Windows OS. You can find a link to download the documentation here:

www.g-technology.com/support/gspeed_es_pro/

NOTE: The ATTO ConfigTool makes it possible to create RAID groups up to 16TB that are compatible with Windows XP. For more information, please refer to the chapter [Using ATTO R680 RAID Controller](#).

G | SPEED® eS PRO

Using ATTO R680 RAID Controller

- Download ATTO RAID Software p.14
- Install ATTO Driver & ConfigTool p.14
- Install ATTO Controller p.15
- Attach eS Pro to ATTO Controller p.15
- Add Second G-SPEED eS Pro Unit p.16
- Uninstall ATTO Driver & ConfigTool p.16



Download ATTO RAID Software

To use the ATTO R680 RAID controller, you first need to install drivers and software on your system. Visit www.g-technology.com/support/gspeed_es_pro/

Here you will find a special link to the ATTO website where you can download G-Technology approved drivers and software. You will also find the latest version of this manual and easy configuration scripts for quickly setting up your G-SPEED eS Pro with the ATTO controller.

From the G-Technology page* on the ATTO website, please download the following items:

- Driver for your system
- ConfigTool utility
- ATTO R680 User Guide (optional)

*The software listed on the ATTO/G-Technology page has been tested and approved for use with G-SPEED eS Pro. Software listed on the standard download page on the ATTO website may not be compatible with G-SPEED eS Pro.

Mac OS X - Read PDF prior to download for special instructions			
Driver	Version	Description	Notes
Mac OS 10.4+ - later	2.33	File Size: 462 KB Mac OS driver for ExpressSAS RAID adapters. Download this file to your Mac and double click it to launch the driver installer program.	PDF
Flash Bundle	Version	Description	Notes
Mac OS X Flash Bundle	2011_08_22	File Size: 8.04 MB Firmware file for ExpressSAS RAID adapters on Mac OS X (10.4.X - later). Download this file to your Mac, and use the latest version of the ATTO Configuration Tool to install the firmware file to the host adapter. Note: Read this before updating your adapter.	PDF
Configuration Tool	Version	Description	Notes
Mac OS X 10.4+ - later ConfigTool	2.38	File Size: 22.2 MB The ATTO ConfigTool for Mac OS X 10.4+ - later can be used to configure and configure the host adapter for optimal performance. It can also be used to update the firmware on the host adapter. Download the tool to your Mac and double click the file to launch the installer.	PDF
HBA Command Line Interface	Version	Description	Notes

Install ATTO Driver & ConfigTool

G-SPEED eS Pro comes pre-configured for use with the ATTO R680 RAID controller. The drive is set up in RAID 0 and formatted for Mac OS X. Connecting G-SPEED eS Pro to your Mac Pro and configuring your system takes just a few steps as outlined below. (Windows users, please refer to the ATTO R680 User Guide.)

1. Locate the driver and ConfigTool downloaded from the ATTO/G-Technology page and install the driver, then ConfigTool.
2. The ATTO ConfigTool can notify you if problems occur with the G-SPEED eS Pro. If you would like to use this feature, select 'Full Installation'.
3. Shut down your system.

ATTO ConfigTool v4.01

Choose Install Set

- Application only
Installs only the application, without the ConfigTool system service. Choose this if you do not have adapters in this system, and will only be managing remote systems from this computer.
- Full Installation
Installs the application as well as the ConfigTool system service. Choose this option if you have any adapters installed on this computer.

Install ATTO Controller

It is simple to install the ATTO controller, as explained below. Keep in mind that ATTO ExpressSAS Host Adapters contain components that are sensitive to electrostatic discharge (ESD). Please follow standard methods to avoid ESD.

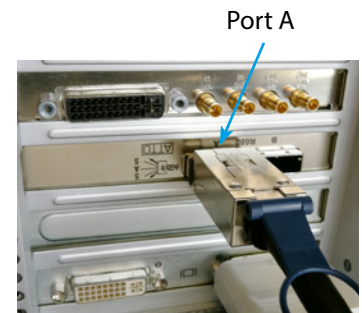
1. For maximum performance, install the ATTO R680 RAID controller in your MacPro in SLOT 2 (x16 slot closest to video card).
2. Secure the ATTO controller in place.

NOTE: If you are using a video capture card such as AJA Kona™ or Blackmagic Decklink™, follow their recommendations for slot usage.

Attach eS Pro to ATTO Controller

Attaching G-SPEED eS Pro to the ATTO R680 RAID controller takes a few easy steps.

1. Shut down your system.
2. Attach one end of the supplied mini-SAS cable to the mini-SAS port located on the back of G-SPEED eS Pro.
3. Attach the other end of the mini-SAS cable to Port A (leftmost port) on the ATTO controller, as shown at right.
4. Attach the power cord to the back of G-SPEED eS Pro and connect the other end to AC power.
5. Power on the G-SPEED eS Pro and power on the system.
G-SPEED eS Pro will mount on the desktop.



NOTE: G-SPEED eS Pro is shipped from the factory in RAID 0 mode for best performance. The ATTO controller also supports RAID 1, 5, 6, 10 and JBOD modes. Refer to [Change the RAID Mode](#) if you want to change the RAID mode. See [RAID Levels Explained](#) for information on the features of supported RAID modes.

Add Second G-SPEED eS Pro Unit

You can add an additional G-SPEED eS Pro as either a stand-alone volume, or combine it with another unit to create a very fast 8-drive RAID array.

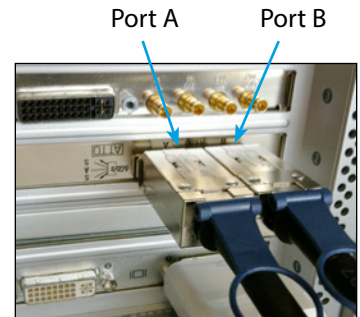
Add as a stand alone volume:

To add as a stand-alone volume, simply repeat the steps in the [previous section](#), attaching the new unit to Port B. Both G-SPEED eS Pro units will mount on the desktop.

Combine with another G-SPEED eS Pro:

In order to combine two G-SPEED eS Pros, both units will need to be reconfigured, deleting all data on the drives. If you currently have a G-SPEED eS Pro and you wish to add a second unit to increase capacity and performance, be sure to **BACK UP YOUR DATA BEFORE CONTINUING**.

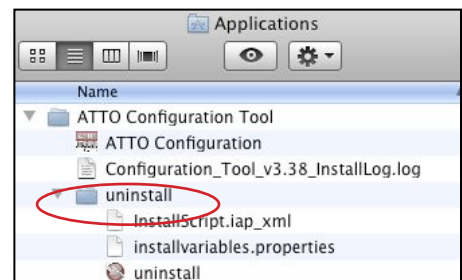
1. Plug the second unit into Port B on the ATTO controller.
2. Power on G-SPEED eS Pro.
3. Now you need to configure the two units. Continue to the section [Configure Two RAID Units](#) for instructions.



Uninstall ATTO Driver & ConfigTool

The Uninstall application is located in the Applications/ ATTO ConfigTool/Uninstall folder.

Double-click the application file to launch, and follow the prompts.



G | SPEED® eS PRO

Configuring G-SPEED eS Pro

- RAID Configuration Scripts for Mac p.18
- Use the ATTO ConfigTool p.19
- Change the RAID Mode p.21
- Configure Two RAID Units p.26
- Set Up Alert Notifications p.31



RAID Configuration Scripts for Mac

G-Technology provides RAID Configuration Scripts so you can quickly configure/reconfigure the RAID mode of G-SPEED eS Pro. Download the scripts from www.g-technology.com/support/gspeed_es_pro/.

These scripts will configure **ALL** G-SPEED eS Pro enclosures attached to the RAID controller, using **ALL** drives in the new RAID group. Disconnect any G-SPEED eS Pro enclosure that you do not want to reconfigure.



WARNING: THESE SCRIPTS WILL COMPLETELY ERASE THE DATA ON YOUR DRIVE(S) WHILE RECONFIGURING THE RAID MODE AND WILL REQUIRE THE DRIVE TO BE FORMATTED USING DISK UTILITY.

To change the RAID mode, do the following steps. There is no Undo function, so use the scripts very carefully!

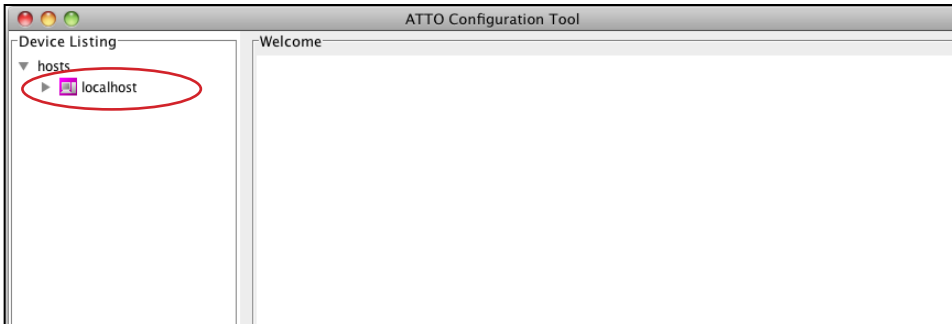
1. Make sure you have backed up the data on all G-SPEED eS Pro enclosures connected before continuing. This process will erase ALL DATA on ALL DRIVES.
2. Unmount G-SPEED eS Pro by dragging the icon to the trash. (Keyboard shortcut: Command+E.)
3. Double-click the command file that matches the RAID mode to which you would like to reconfigure the G-SPEED eS Pro(s). You will need to be logged into an account with Administrator privileges.
4. A terminal window will automatically open and execute the command file. G-SPEED eS Pro will begin to initialize if RAID 5 or RAID 6 was selected. This process takes approximately 45 min per TB. RAID 0 does not require initialization and the new volume will be immediately available for system format.
5. When the configuration process is complete, you will need to format the G-SPEED eS Pro using Disk Utility. See [Initialize Drive for Mac](#) for instructions.

Use the ATTO ConfigTool

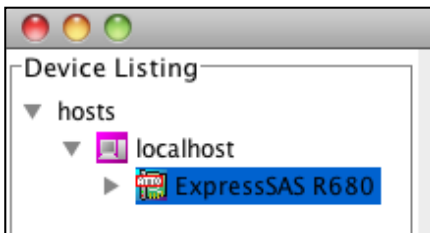
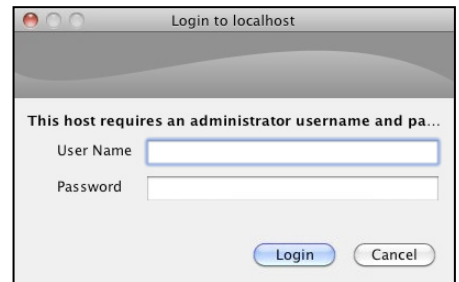
The ATTO ConfigTool application is used to configure the many parameters of the ATTO R680 RAID controller. You will find ConfigTool in the Applications/ATTO ConfigTool folder.



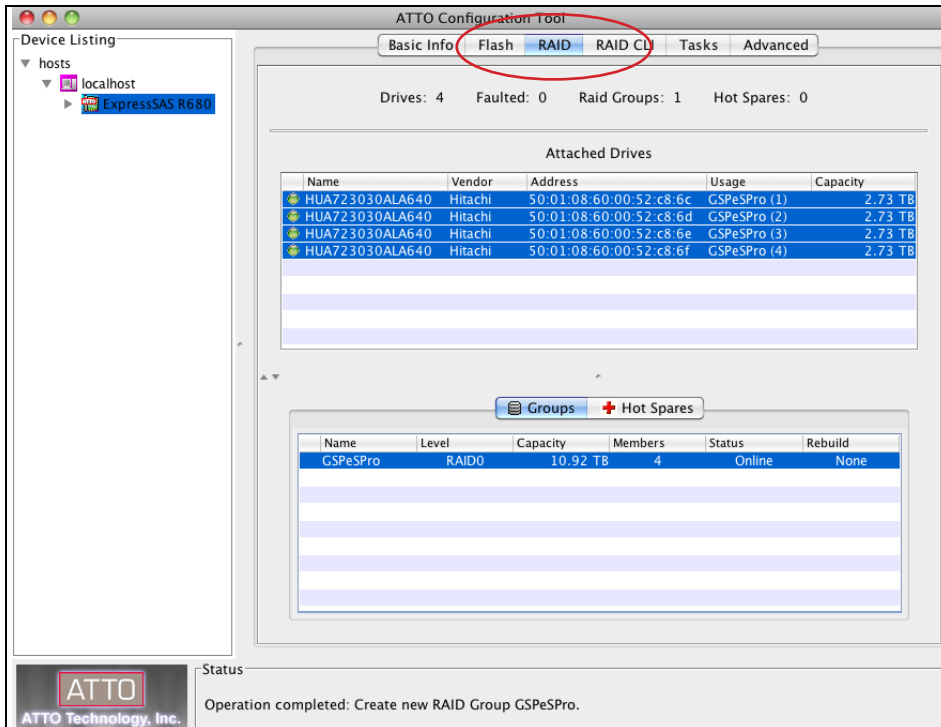
1. Double-click to launch the application.
2. The screen shown below will appear. Double-click 'localhost'.
3. Enter the System Administrator username and password when prompted.



4. Click on 'ExpressSAS R680'.



5. Select the RAID tab to display the currently attached drives and RAID groups.



The following sections will explain how to **Change the RAID Mode** of G-SPEED eS Pro, and how to **Configure Two RAID Units** for maximum performance. You can also see **RAID Configuration Scripts for Mac** for easy reconfiguring of G-SPEED eS Pro.

Please refer to the separate ATTO documentation for more information on the many additional features of the ConfigTool.

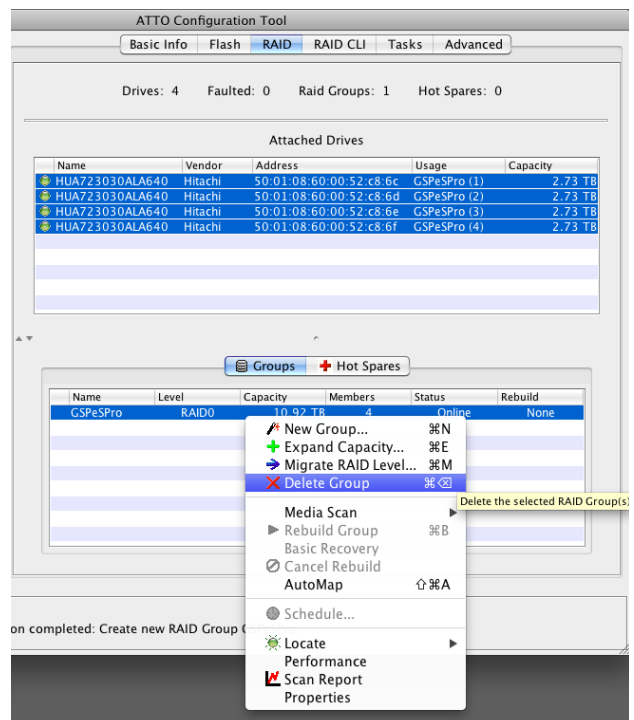
Change the RAID Mode

The G-SPEED eS Pro/ATTO R680 RAID controller combination is configured at the factory in RAID 0 mode. RAID 1, 5, 6, 10 and JBOD modes are available and the ATTO ConfigTool is used to change the mode of operation.

NOTE: There are Mac OS X RAID configuration scripts available that will quickly reconfigure your G-SPEED eS Pro units in RAID 0, RAID 5 or RAID 6. See [RAID Configuration Scripts for Mac](#) for more information.

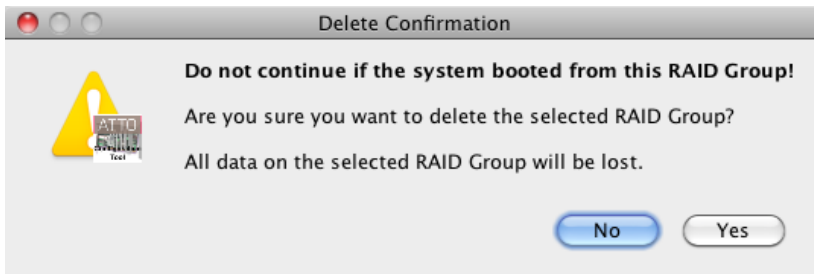
Steps to Change from RAID 0 to RAID 5

1. Unmount G-SPEED eS Pro by dragging the icon to the trash. (Keyboard shortcut: Command+E.)
2. Launch the ATTO ConfigTool as explained in the previous section, [Use the ATTO Config-Tool](#).
3. Select the RAID tab, and in the lower pane, right-click on the G-SPEED eS Pro RAID group. From the dropdown menu, select 'Delete Group'.

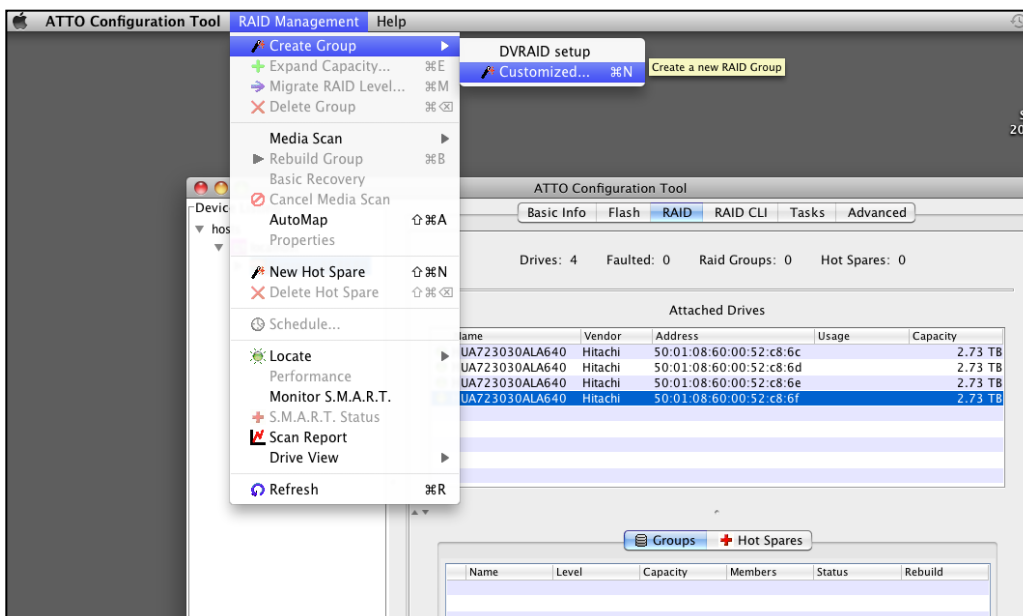


- The following dialog box will appear, alerting that you about to delete the RAID group. Click 'Yes' to continue.

WARNING: THIS WILL DELETE ALL DATA STORED ON G-SPEED eS Pro!

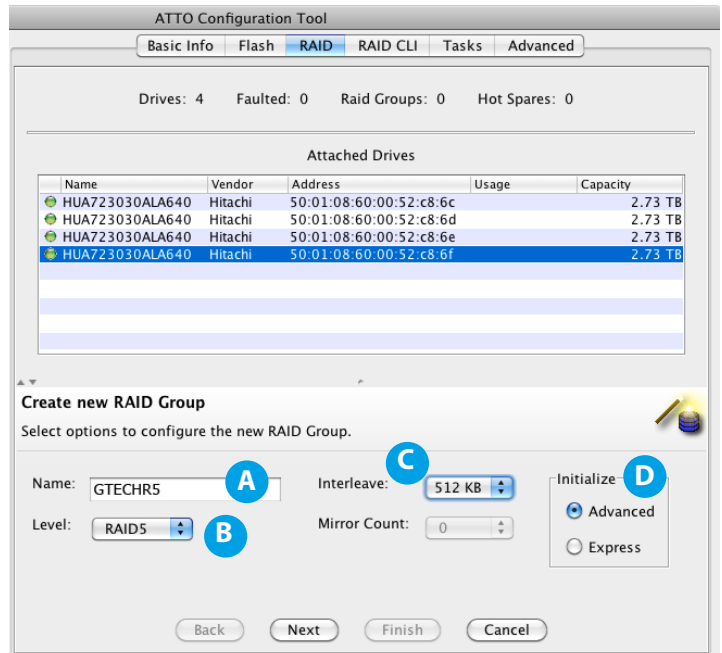


- Click on the RAID Management menu item and select 'Create Group> Customized'. (Keyboard shortcut: Command + N.)

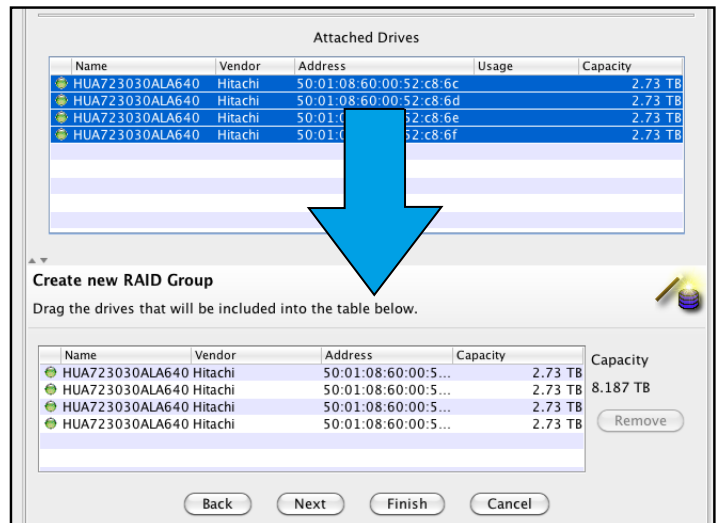


6. The 'Create New RAID Group' panel will open in ConfigTool. Make the following choices, then click the 'Next' button.

- A. Name: Enter a name for the RAID group (like GTECHR5)
- B. Level: Select RAID 5
- C. Interleave: Select 512KB
- D. Initialize: Select Advanced



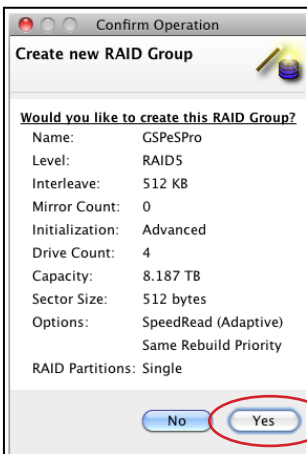
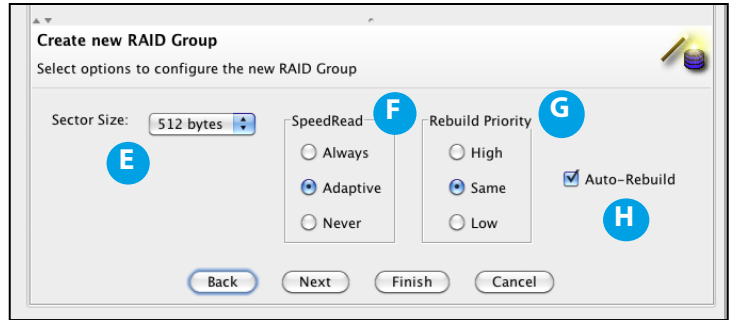
7. Select all the drives listed in the top pane of the window, and drag them to the bottom pane. Then click 'Next'.



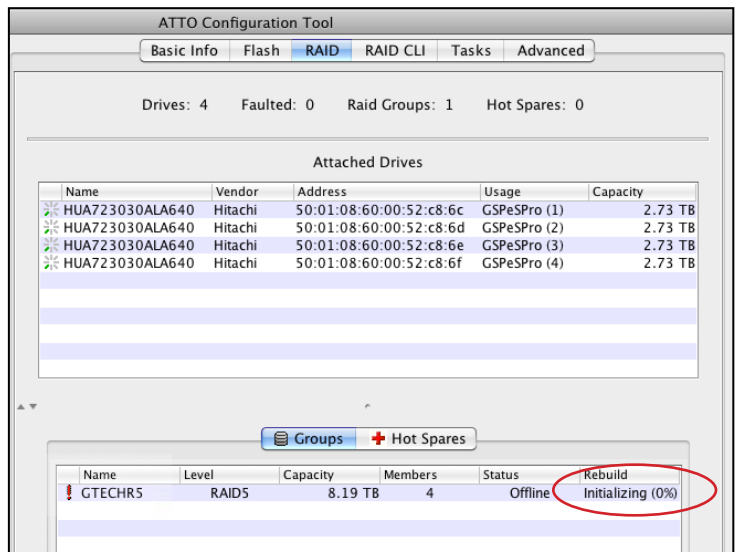
8. The 'Create New RAID Group' pane will display the configuration options. Make the following choices, then click the 'Next' button.

- E. Sector Size: Select 512 bytes
- F. SpeedRead: Select Adaptive
- G. Rebuild Priority: Same
- H. Auto Rebuild: Selected

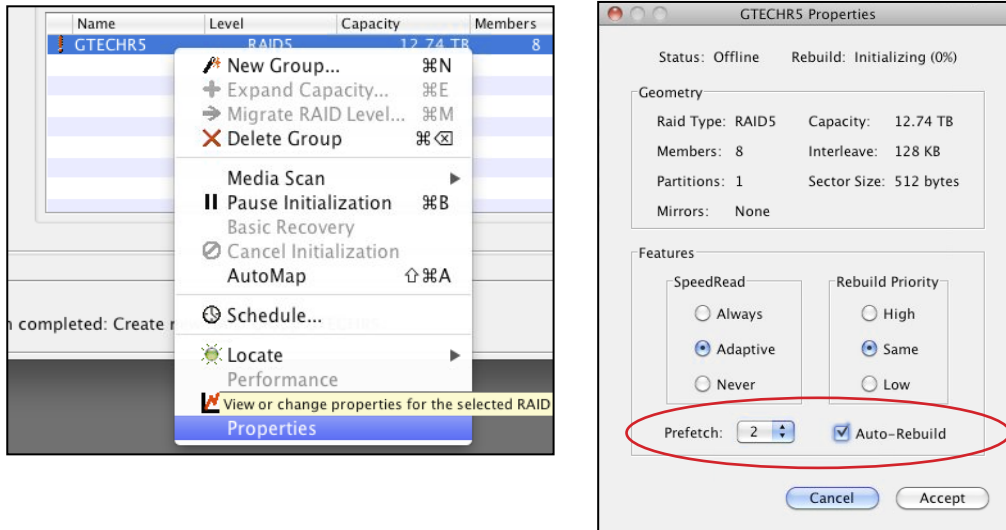
9. Confirm the RAID Group configuration and click 'Yes'.



10. The RAID Group will begin to initialize. This process takes approximately 45 min per TB.



11. Right-click on the RAID group in the lower panel. From the dropdown menu, select 'Properties'.
12. In the popup window that opens, select a Prefetch value of 2 and check Auto-Rebuild.



13. Click 'Accept' to close the window.
14. The RAID initialization process will continue and when complete, the RAID Group (Volume) will need to be formatted using Disk Utility. See [Initialize Drive for Mac](#) for instructions.

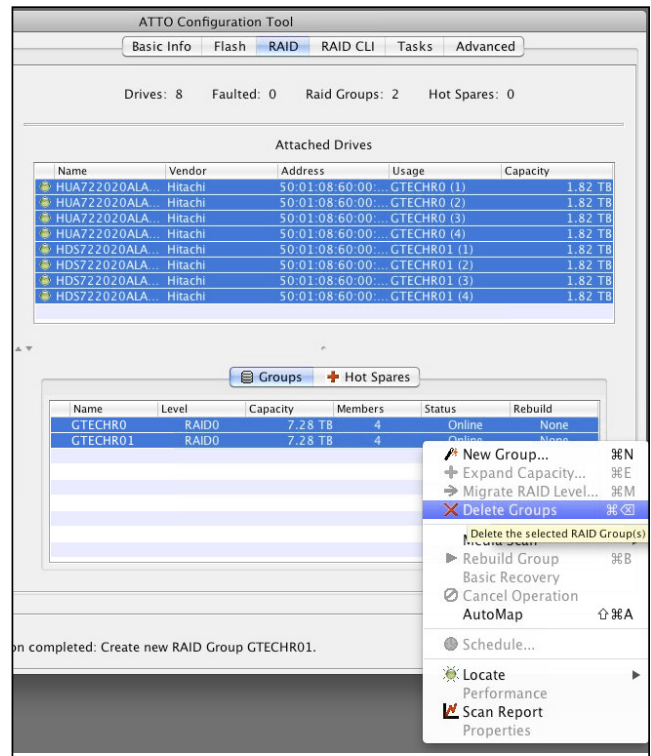
Configure Two RAID Units

Combining two G-SPEED eS Pros on the ATTO RAID Controller can produce incredible performance. In order to combine two units, both units will need to be reconfigured, which deletes all data on the drives. If you currently have one G-SPEED eS Pro and you wish to add a second unit, be sure to **BACK UP YOUR DATA BEFORE CONTINUING**.

NOTE: There are Mac OS X RAID configuration scripts available that will quickly reconfigure your G-SPEED eS Pro units in RAID 0, RAID 5 or RAID 6. See [RAID Configuration Scripts for Mac](#) for more information.

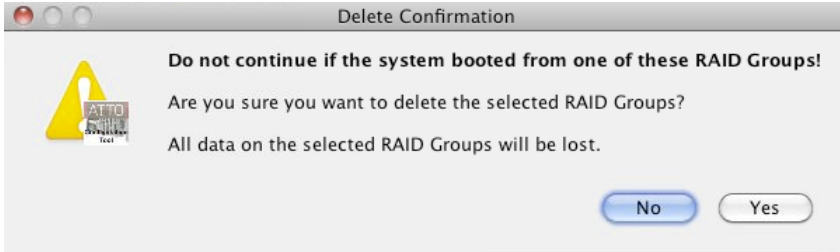
Steps to Configure the Units

1. Unmount G-SPEED eS Pro by dragging the icon to the trash. (Keyboard shortcut: Command+E.)
2. Launch the ATTO ConfigTool as explained in the previous section, [Use the ATTO ConfigTool](#).
3. Select the RAID tab, and in the lower pane, select both RAID groups. Right-click and from the dropdown menu, select 'Delete Groups':

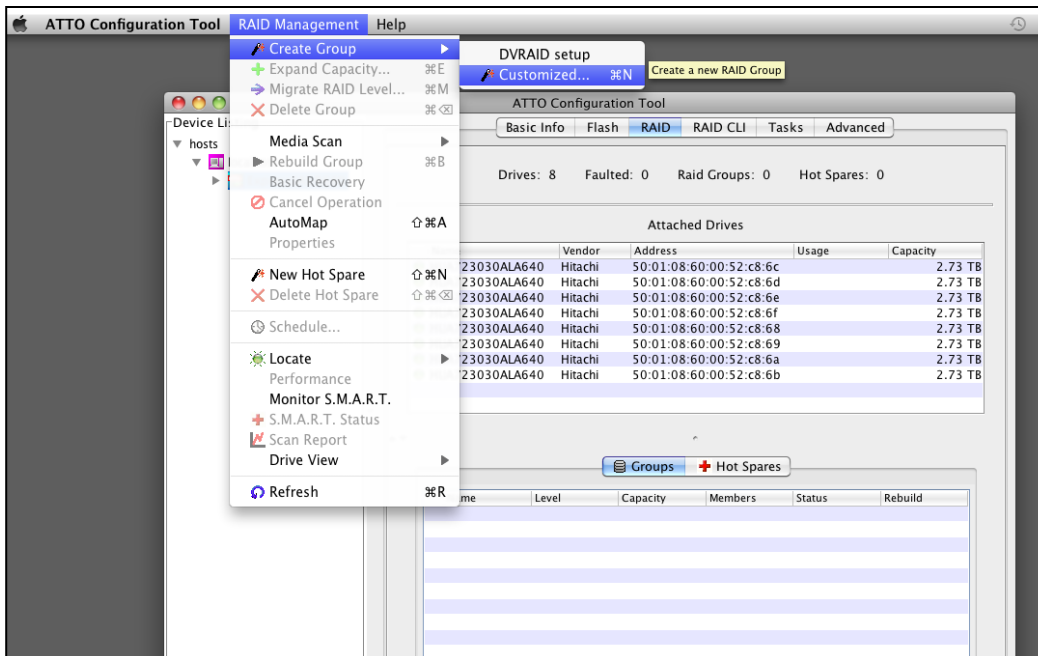


- The following dialog box will appear, alerting that you about to delete the RAID group. Click YES to continue.

WARNING: THIS WILL DELETE ALL DATA STORED ON G-SPEED eS Pro DRIVES!

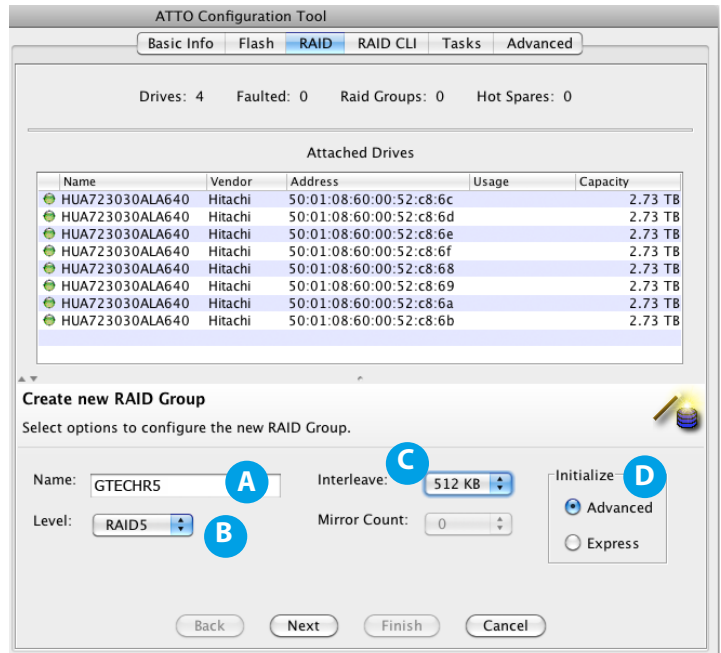


- Click on the RAID Management menu item and select 'Create Group> Customized'. (Keyboard shortcut: Command + N.)

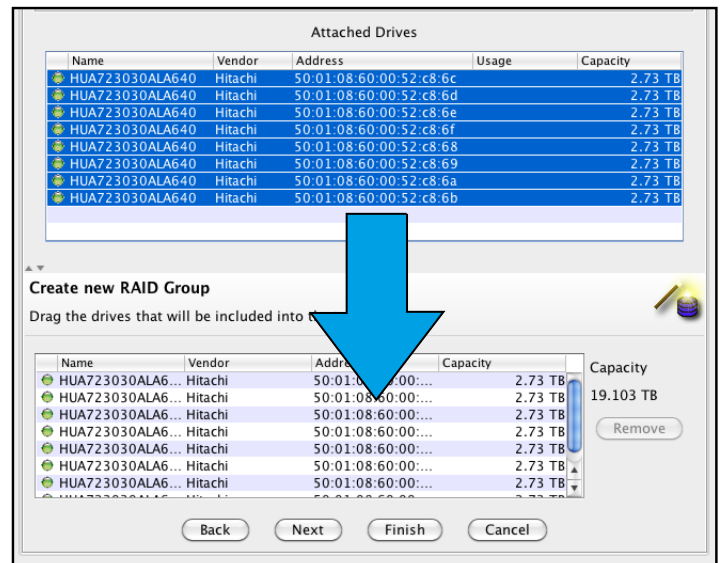


6. The 'Create New RAID Group' panel will open in ConfigTool. Make the following choices, then click the 'Next' button.

- A. Name: Enter a name for the RAID group (like GTECHR5)
- B. Level: Select RAID 5 (or RAID 0, or RAID 6 if desired)
- C. Interleave: Select 512KB
- D. Initialize: Select Advanced



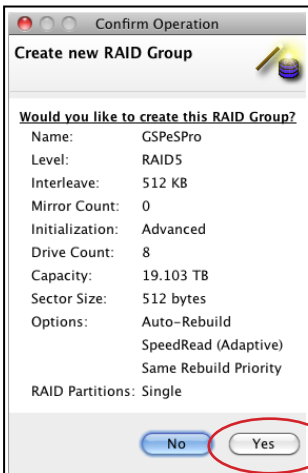
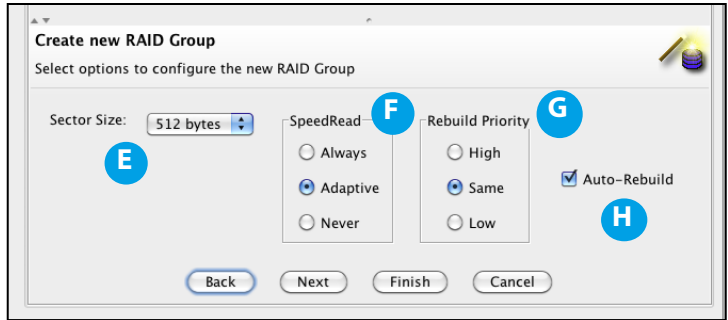
7. Select all the drives listed in the top pane of the window, and drag them to the bottom pane. Then click 'Next'.



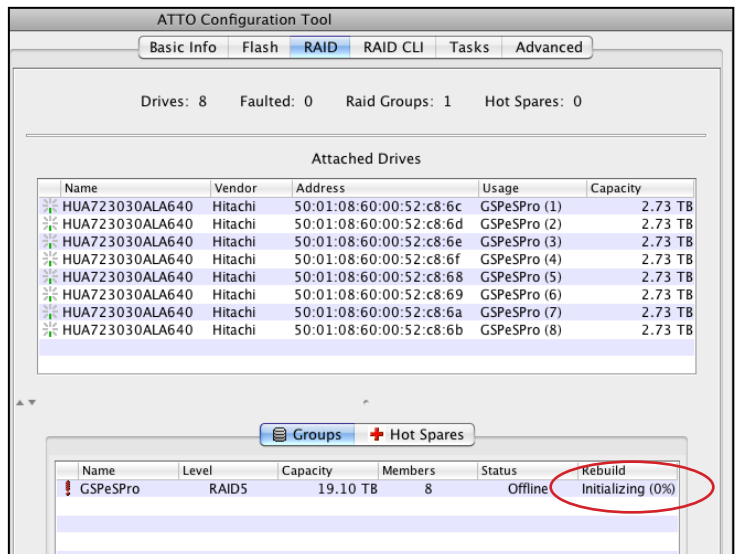
8. The 'Create New RAID Group' pane will display the configuration options. Make the following choices, then click the 'Next' button.

- E. Sector Size: Select 512 bytes
- F. SpeedRead: Select Adaptive
- G. Rebuild Priority: Same
- H. Auto Rebuild: Selected

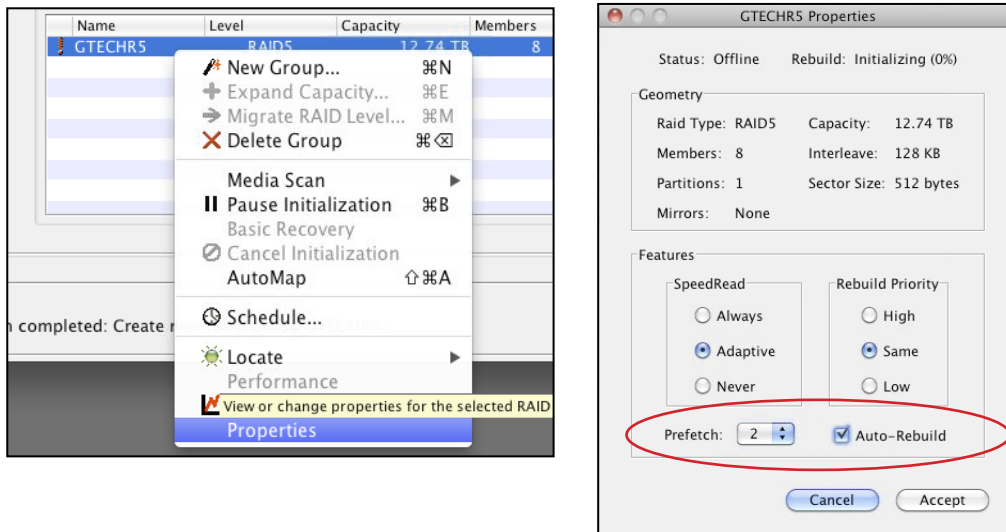
9. Confirm the RAID Group configuration and click 'Yes'.



10. The RAID Group will begin to initialize. This process takes approximately 45 min per TB.



11. Right-click on the RAID group in the lower panel. From the dropdown menu, select 'Properties'.
12. In the popup window that opens, select a Prefetch value of 2 and check Auto-Rebuild.



13. Click 'Accept' to close the window.
14. The RAID initialization process will continue and when complete, the RAID Group (Volume) will need to be formatted using Disk Utility. See [Initialize Drive for Mac](#) for instructions.

Set Up Alert Notifications

The ATTO ConfigTool can notify you when events occur on the RAID system. Open the ConfigTool and select 'localhost' in the left bar. The screen below will appear.

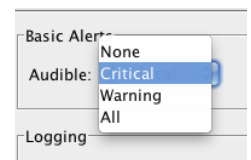
The screenshot shows the ATTO Configuration Tool window with the 'Notifications' tab selected. The 'Device Listing' on the left shows 'localhost' selected. The main configuration area is divided into three sections:

- Basic Alerts:** Contains three dropdown menus for 'Audible', 'Visual', and 'System Log', all currently set to 'Critical'.
- Logging:** Includes a text field for 'Location' (set to '/var/log/attotech'), a dropdown for 'Events' (set to 'All'), a text field for 'Size Limit (KB)' (set to '0'), and a 'Browse' button.
- Email:** Contains fields for 'Server Address' (mail.yourserver.com), 'Username' (username), 'Sender Address' (you@yourserver.com), and 'Password' (masked with dots). There is an 'Enable SSL' checkbox and a 'Port' field (set to 25). Below this are three 'Notification Addresses' fields, each with a dropdown menu (set to 'Critical', 'None', and 'None' respectively).

At the bottom of the window are three buttons: 'Commit', 'Restore', and 'Test'.

The ConfigTool has four types of Alerts: Audible Alert, Visual Alert, System Log and By Email. You can set the Event threshold for each Alert type and for different email addresses. To enable email notification, enter your server information and up to three recipient addresses.

Events are categorized in two ways. 'Critical' indicates a serious problem has occurred and the System Administrator should perform corrective action. 'Warning' indicates events that are less serious but still warrant notification.



G | SPEED® eS PRO

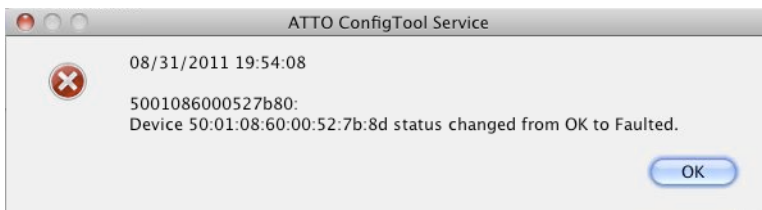
Maintenance for your Drive

- Replace a Failed Disk Drive p.33
- Initialize Drive for Mac p.36
- Restore the Drive Icon p.39
- Reformat with Partitions p.41




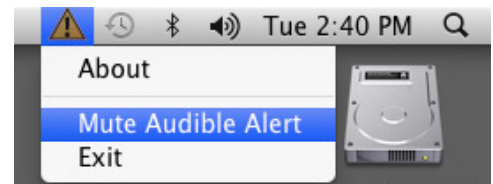
Replace a Failed Disk Drive

The ATTO R680 RAID controller continually monitors the health of each of the disk drives in G-SPEED eS Pro. In the event of a disk failure, you will be notified based on the notifications settings you entered in [Set Up Alert Notifications](#). The ATTO ConfigTool service will report the failed drive and help you locate its physical position in the G-SPEED eS Pro enclosure.



Mute the Alarm

If you have set up 'audible alarms', the ATTO RAID controller will beep when a drive has failed, or other critical event has occurred. To mute the audible alarm, click on the Alert icon  in the System Notification area of your desktop. Select 'Mute Audible Alert'.



Note About Drive Failure

If the G-SPEED eS Pro was configured in RAID 1 or RAID 5 mode, a drive failure does not necessarily result in data loss. However, the array is now in a degraded and unprotected state; the failed drive should be replaced as soon as possible to avoid data loss.

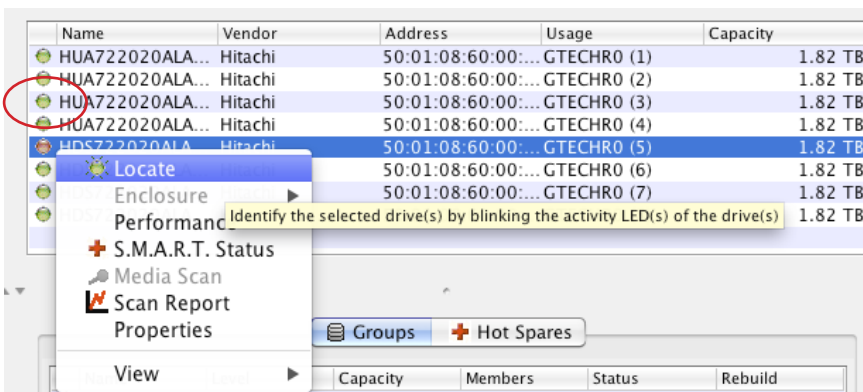
If G-SPEED eS Pro was configured in RAID 6 mode, up to two drives can fail with no loss of data. Replace any failed drive as soon as possible.

Follow the steps on the [next page](#) to identify and replace a failed drive.

1. Launch the ATTO ConfigTool. You will find the ConfigTool in the Applications/ATTO ConfigTool folder on your computer.
2. Double click on 'localhost', click on 'ExpressSAS R680', and login to the application.

Name	Vendor	Address	Usage	Capacity
HUA722020ALA...	Hitachi	50:01:08:60:00:...	GTECHRO (1)	1.82 TB
HUA722020ALA...	Hitachi	50:01:08:60:00:...	GTECHRO (2)	1.82 TB
HUA722020ALA...	Hitachi	50:01:08:60:00:...	GTECHRO (3)	1.82 TB
HUA722020ALA...	Hitachi	50:01:08:60:00:...	GTECHRO (4)	1.82 TB
HDS722020ALA...	Hitachi	50:01:08:60:00:...	GTECHRO (5)	1.82 TB
HDS722020ALA...	Hitachi	50:01:08:60:00:...	GTECHRO (6)	1.82 TB
HDS722020ALA...	Hitachi	50:01:08:60:00:...	GTECHRO (7)	1.82 TB
HDS722020ALA...	Hitachi	50:01:08:60:00:...	GTECHRO (8)	1.82 TB

3. Select the 'RAID' tab and the top pane should show a screen similar to the one show below. In our example, the failed drive is the entry with the orange indicator next to its name.

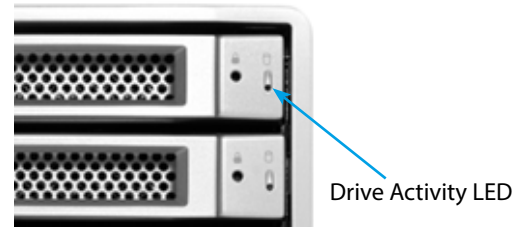


4. Right-click on the failed drive and select 'locate'.

WARNING: Make absolutely sure that you remove the correct drive as indicated in the steps below.

REMOVING THE WRONG DRIVE CAN RESULT IN THE LOSS OF THE ARRAY AND ALL OF THE CONTENT STORED ON G-SPEED ES PRO.

5. The failed drive's LED will begin to blink in the G-SPEED eS Pro enclosure, making it easy to identify which drive needs to be replaced. Be certain to remove the correct drive, as removing the wrong drive could cause data loss.



NOTE: It is possible the failed drive will be completely offline. In this case, the drive's Activity LED will be completely turned off, indicating the failed drive.

6. Remove the failed drive by inserting the provided key into the Lock hole and sliding the drive out of the enclosure.
7. Replace the failed drive with a new disk module and secure in place. Once the drive has spun up to speed, the ConfigTool will indicate that the array is rebuilding. The rebuild time is approximately 1 hour per TB.

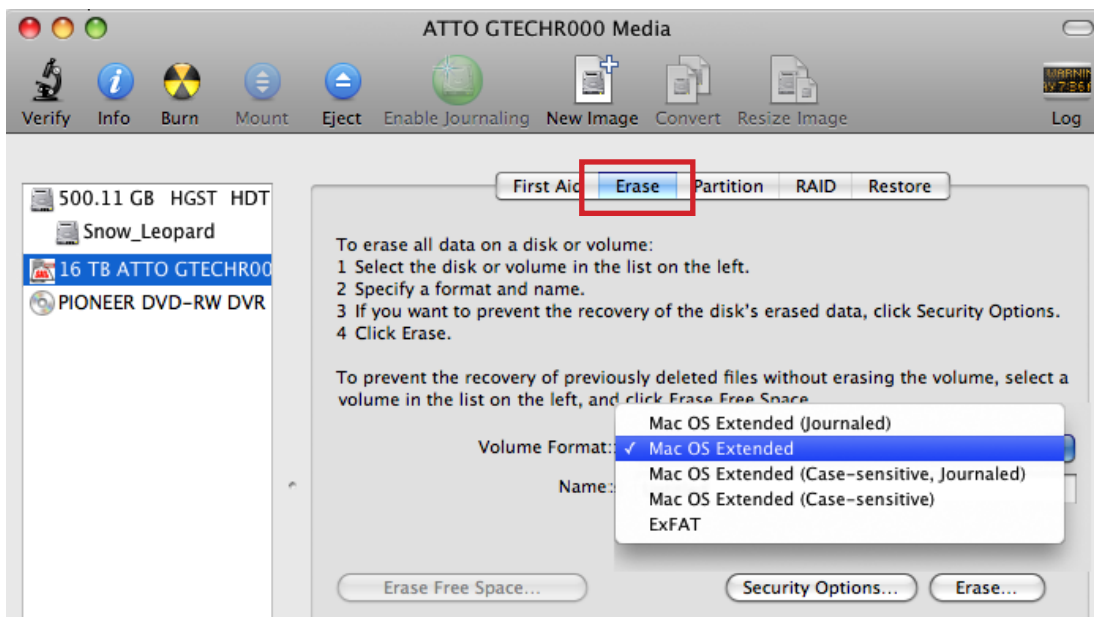
Once the rebuild is complete, G-SPEED eS Pro is back to normal, protecting your valuable data once again.

NOTE: Replacement and/or extra G-SPEED eS Pro disk modules are available for purchase online at: www.g-technology.com/Products/g-speed-es-pro.cfm

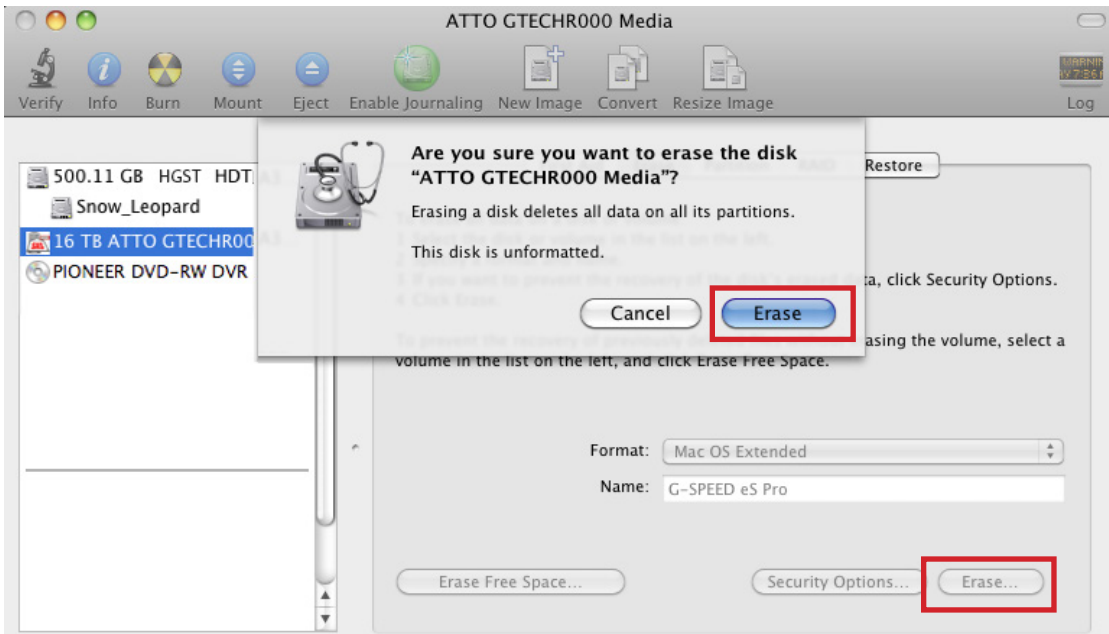
Initialize Drive for Mac

G-SPEED eS Pro was factory-formatted for use or 'initialized' for Mac OS X. You can reinitialize if you'd like to quickly erase the contents of the drive, or if you reconfigure the RAID mode. Here are the steps.

1. First, open the Disk Utility Program. This application is located on your hard drive under Applications/Utilities/Disk Utility. The window below will appear. Your G-SPEED eS Pro will be displayed in the left-hand column.
2. Select the G-SPEED eS Pro by clicking its drive icon in the left-side column. Information about the drive will be displayed at the bottom of the window.
3. Select the Erase tab to view the formatting options. Select 'Mac OS Extended' on the Format menu and enter 'G-SPEED eS Pro' for the name.

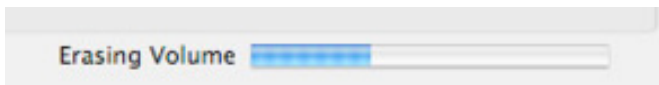


- Click the Erase button in the lower right corner of the window. A dialog box will appear asking if you want to erase the G-SPEED eS Pro partition.

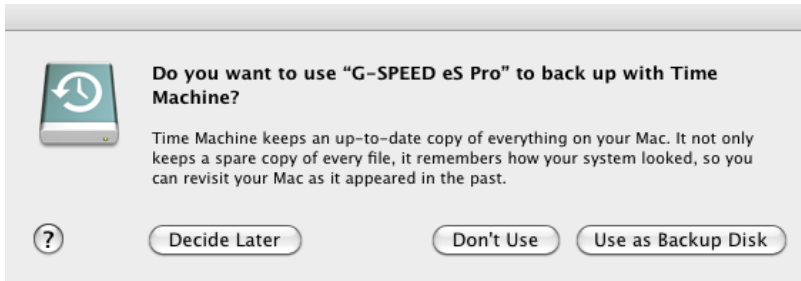


WARNING: THIS NEXT STEP WILL ERASE ALL DATA ON YOUR DRIVE.

- Click on the Erase button to continue. A Progress bar in the lower right corner of the window will show the progress of the disk's reformatting.



6. After the drive is reinitialized, you should automatically see the Time Machine dialog box. Click the 'Don't Use' button if you do not want to use G-SPEED eS Pro as a Time Machine backup target.



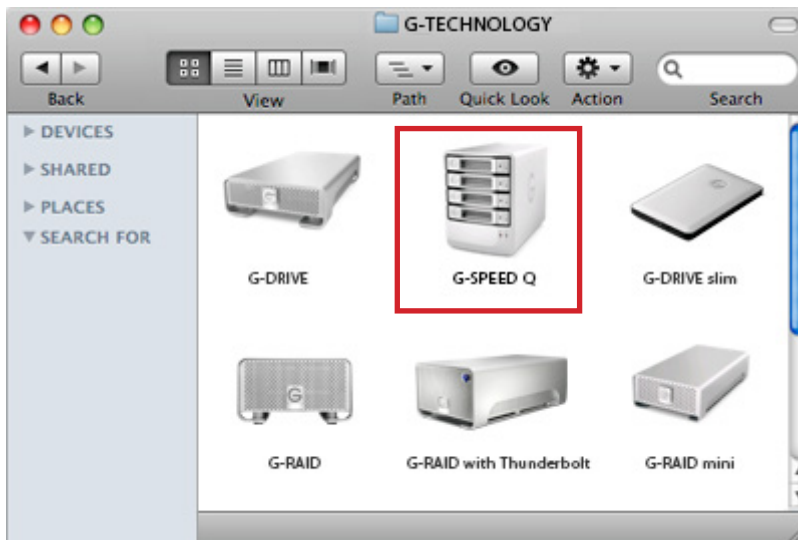
7. Quit the Disk Utility Program. After reinitializing the drive, the custom icon for G-SPEED eS Pro has been erased. You can optionally restore this icon with the steps on the [following page](#).

Restore the Drive Icon

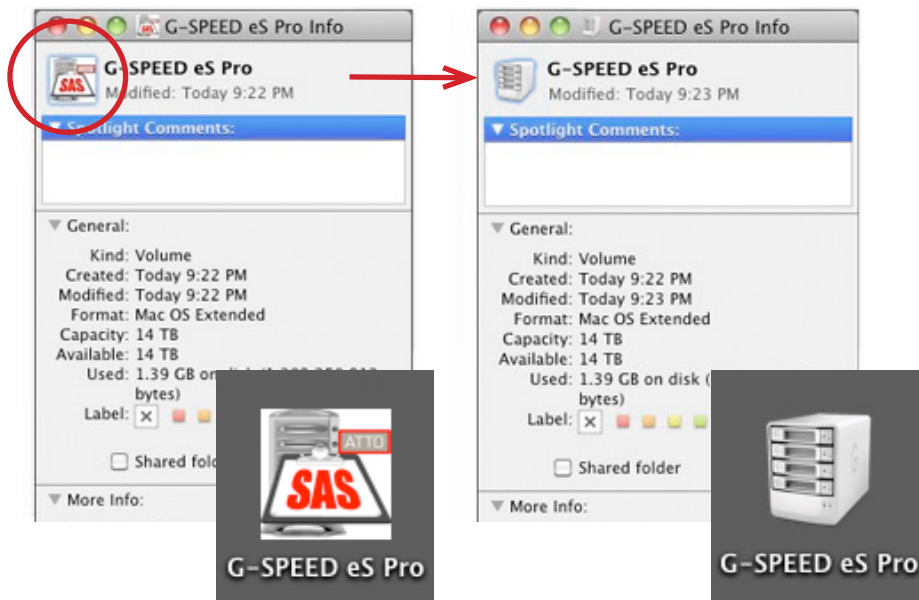
If the G-SPEED eS Pro drive icon was erased during the reinitializing process (see [previous section](#)), you can restore the icon with the following easy steps.

NOTE: This Process is not required for the operation of G-SPEED eS Pro. However, it will make your drive's appearance on the computer desktop look nicer and more accurate.

1. To get the G-Technology icon package, go to www.g-technology.com/support and navigate to your Product. There will be a link to download the icons.
2. Once downloaded, double-click the Zip file to open. Next, double-click the DMG file to open the G-Technology Icons package.
3. Click to select the drive icon for G-SPEED eS Pro in the package window. Press Command+C to copy the icon. (*below*)



4. Select the G-SPEED eS Pro icon on your desktop and press Command+I. This opens its Get Info window. *(below left)*
5. Select the default icon in the Get Info window. *(below left)*
6. Press Command+V to paste the G-SPEED eS Pro custom icon into the Get Info window. *(below right)*



The icon for your G-SPEED eS Pro has been restored and you can close the Get Info window. Your drive is now fully ready for use!

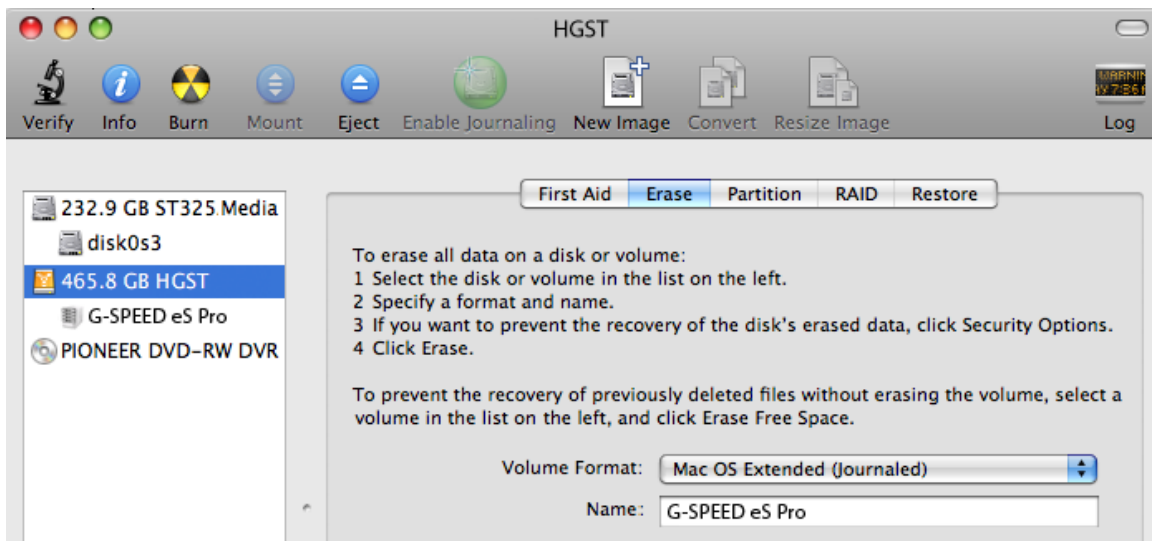
Reformat with Partitions

'Partitioning' a hard drive is the Process of dividing a hard drive into separate, discrete sections called 'volumes'. Each volume works like a separate disk. You can create up to 16 different partitions on a hard drive in OS X and each partition can be a different size and format.

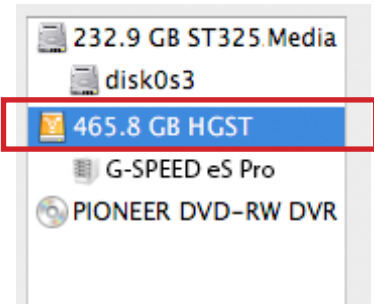
With hard drives getting bigger, it is useful to partition your hard drive so sections of its space can be used for different purposes. For instance, segment user data from backup data, set up a multi-boot environment with different Operating Systems or create a dedicated capture scratch disk for programs like Final Cut Pro™.

The following steps will guide you through this simple process of partitioning your drive. *In this example, we will partition a 500 GB G-DRIVE mini connected via FireWire. The steps will be identical for your drive, only the name may be different.*

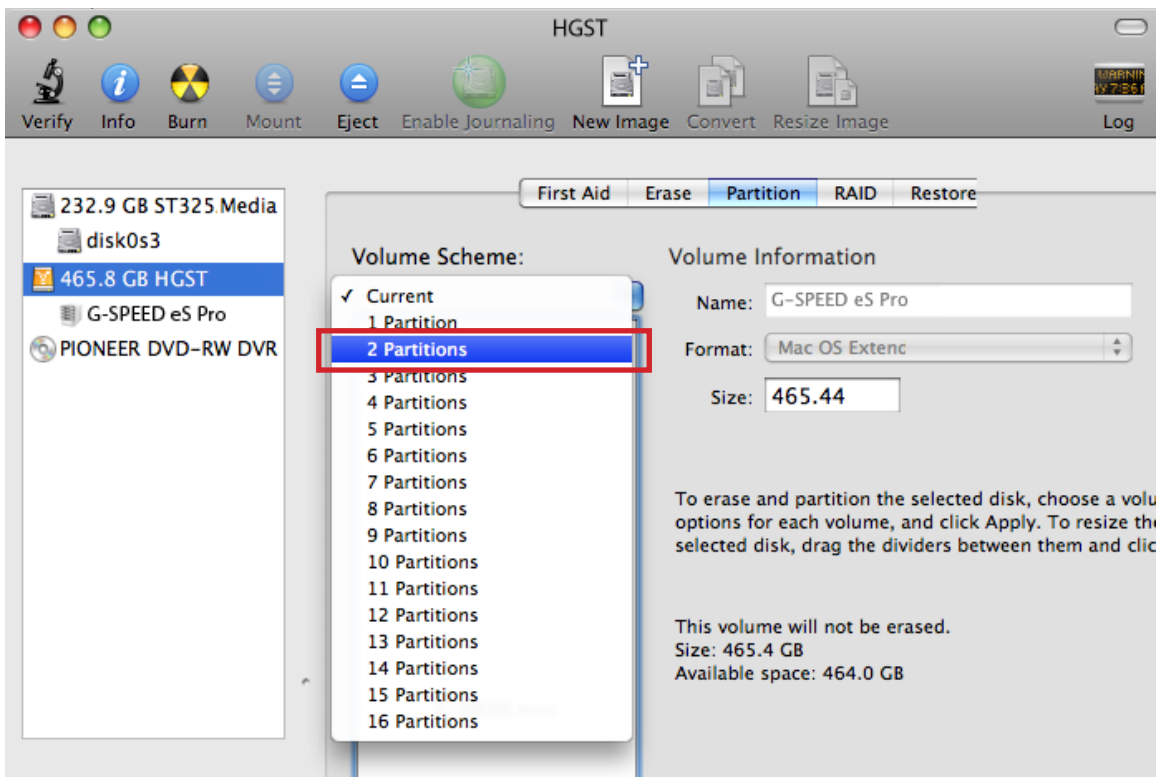
1. First, open the Disk Utility Program. This application is located on your hard drive under Applications/Utilities/Disk Utility. The window below will appear. Your G-Technology drive will be displayed in the left-hand column.



2. Select the FireWire or USB icon – not the G-Technology drive icon – by clicking it in the left-side column.
3. Click on the Partition button in the main window.

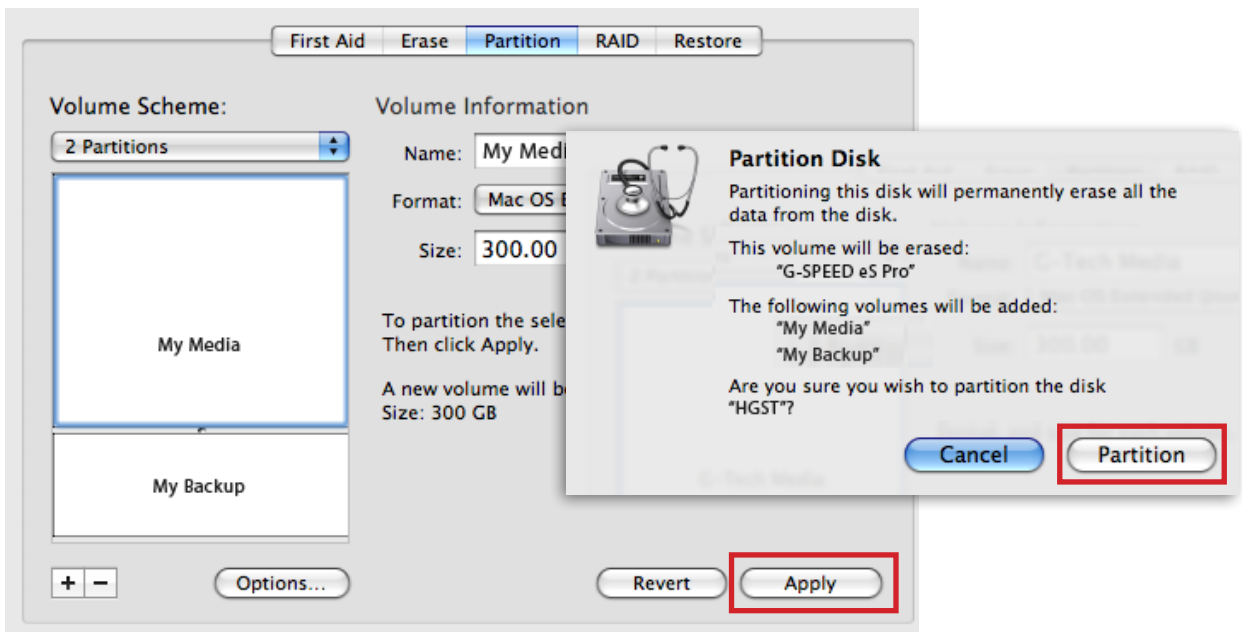


4. Select the number of partitions you would like from the Volume Scheme menu. Below, we have selected '2 Partitions' to create two partitions.

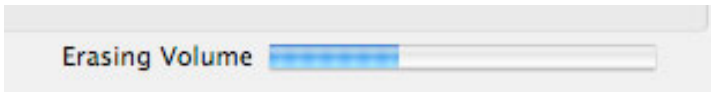


- Click on the first partition in the Volume Scheme area. Your partition will be highlighted by a blue bounding box.
 - In the Name field, type a name for the partition.
 - From the Format menu, choose your desired disk format. If you will use your drive primarily on Mac OSX, it is recommended to use Mac OS Extended or Mac OS Extended (Journaled).
 - In the Size field, type in a size for the partition. Alternately, you can drag the bar in between each partition to quickly change the size.
- Repeat this Process for each partition you have created.
- Click the Apply button in the lower right corner of the window. A dialog box will appear asking if you want to erase the G-Technology drive partition.

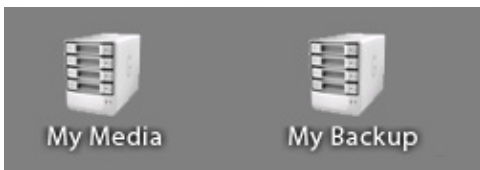
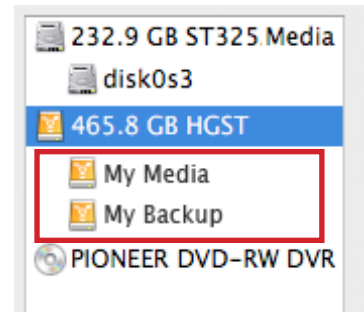
WARNING: THIS NEXT STEP WILL ERASE ALL DATA ON YOUR DRIVE.



8. Click on the Partition button to continue. A Progress bar in the lower right corner of the window will show you the Progress of the disk's reformatting.



9. When partitioning is complete, the multiple partitions will be displayed in the left-hand panel of Disk Utility.
10. Quit the Disk Utility Program. After reinitializing the drive, the custom icon for the G-Technology drive has been erased. You can optionally restore this icon to each partition with the steps on [this page](#).
11. The multiple partitions of the G-Technology drive will be displayed on the desktop. Your drive is now setup with two or more partitions and ready for use.



G | SPEED® eS PRO

Appendix

· RAID Levels Explained	p.46
-------------------------------	------



G-Technology®

RAID Levels Explained

RAID Level	Description	Advantage	Disadvantage	Ideal For...
0	Disk striping	Offers the highest performance and a useable storage capacity of 100% of total available storage capacity	No fault tolerance - failure of one drive in the array results in complete data loss	Content creation applications requiring highest storage capacity
1	Mirroring	Maximum level of data protection as identical data is written to multiple drives	Useable storage space is 50% of total available capacity	Applications in which data security is paramount
5	Disk striping with distributed parity	High read performance, medium write performance with data protection in case of a drive failure.	Useable storage capacity equals total capacity of all drives in the array less the capacity of one drive. Disk failure results in drop in performance	Content creation applications requiring data protection
6	Disk striping with dual distributed parity	High read performance, medium write performance with data protection in case of up to two drive failures.	Useable storage capacity equals total capacity of all drives in the array less the capacity of two drives. Disk failure results in drop in performance	Content creation applications requiring data protection
JBOD	Just-a-bunch-of-disks	Each drive can be accessed as an individual volume. Useable storage capacity is 100% of total available storage.	No fault tolerance	Audio applications

G | SPEED® eS PRO

Support & Warranty

· Technical Support	p.48
· Limited Warranty	p.49
· Copyright	p.51



Technical Support

Thank you for purchasing G-SPEED eS Pro. If you have any comments or questions about this manual or the Product, please let us know!

G-Technology appreciates and values its customers, striving to give you the finest service and support. If you encounter any difficulties while installing or using G-SPEED eS Pro, please contact G-Technology Technical Support at g-technology.com/support

Helpful information for support

When contacting Technical Support, it's best to be in front of your computer and have the following information available:

- Your G-SPEED eS Pro serial number (on bottom of unit)
- Operating System and version
- Computer brand and model
- List of other devices attached to your computer

Limited Warranty

HGST, a Western Digital Company (“HGST”)
Including G-Technology for External Hard Disk Drives

What does this limited warranty cover?

This Limited Warranty applies to new HGST products purchased from an authorized HGST dealer by the original purchaser for normal use and not for resale. HGST warrants that a covered product is free from defects in materials and workmanship, with the exceptions stated below.

How long does limited warranty coverage last?

This limited warranty lasts for 1 year, 2 years, 3 years or 5 years, or a fixed period from date of purchase, depending on when and where it was originally purchased. To determine the warranty specifically for your product, visit www.g-technology.com. A valid proof of purchase may be required to prove eligibility. If you do not have a valid proof of purchase, the limited warranty period will be measured from the date of sale from HGST to the authorized distributor.

What does this limited warranty not cover?

The limited warranty does not cover damage resulting from commercial use, misuse, accident, modification or alteration to hardware or software, tampering, unsuitable physical or operating environment beyond product specifications, improper maintenance, or failure caused by a product for which HGST is not responsible.

There is no warranty of uninterrupted or error-free operation. There is no warranty for loss of data—you must regularly back up the data stored on your product to a separate storage product. There is no warranty for product with removed or altered identification labels.

HGST DOES NOT PROVIDE ANY OTHER WARRANTIES OF ANY KIND, INCLUDING, BUT NOT LIMITED TO, THE IMPLIED WARRANTIES OR CONDITIONS OF MERCHANTABILITY AND FITNESS FOR A PARTICULAR PURPOSE. SOME JURISDICTIONS DO NOT ALLOW THE LIMITATION OF IMPLIED WARRANTIES, SO THIS LIMITATION MAY NOT APPLY TO YOU. HGST is not responsible for returning to you product which is not covered by this limited warranty.

What must you do?

If you are having trouble with a product, before seeking limited warranty service, first follow the troubleshooting procedures that HGST or your reseller provides.

To obtain limited warranty service, you must first obtain a Return Materials Authorization (RMA) and ship-to address by contacting G-Technology at <http://www.g-technology.com/support>. Please follow the instructions found on the website. You must return the covered hard disk drive using approved packaging to our logistics center. You must pay any associated transportation charges, duties and insurance in shipping the drive to our logistics center. You should remove all personal information from the product prior to its return.

What will HGST do?

HGST will replace the drive with a functionally equivalent replacement product, transportation prepaid. HGST may replace your product with a product that was previously used, repaired and tested to meet HGST specifications. You receive title to the replaced product at delivery to carrier at HGST shipping point. You are responsible for importation of the replaced product, if applicable. HGST will not return the original drive to consumers; therefore, the consumer is responsible for moving data to another media before returning. Data Recovery is not covered under this warranty and is not part of the warranty returns process. HGST warrants that the replaced products are covered for the remainder of the original product warranty or 90 days, whichever is greater.

How is our liability limited?

HGST AND ITS AFFILIATES, SUPPLIERS, DISTRIBUTORS, AND RESELLERS ARE NOT LIABLE FOR ANY OF THE FOLLOWING: 1) THIRD-PARTY CLAIMS AGAINST YOU FOR DAMAGES (OTHER THAN BODILY INJURY INCLUDING DEATH AND TANGIBLE PERSONAL PROPERTY; 2) LOSS OF, OR DAMAGE TO, YOUR DATA; OR 3) SPECIAL, INCIDENTAL, OR INDIRECT DAMAGES OR FOR ANY ECONOMIC CONSEQUENTIAL DAMAGES (INCLUDING LOST PROFITS OR SAVINGS), EVEN IF INFORMED OF THE POSSIBILITY. SOME JURISDICTIONS DO NOT ALLOW LIMITATION OF LIABILITY, INCIDENTAL DAMAGES, OR CONSEQUENTIAL DAMAGES, SO THE ABOVE LIMITATIONS MAY NOT APPLY TO YOU.

How do local laws apply?

THIS LIMITED WARRANTY GIVES YOU SPECIFIC LEGAL RIGHTS, AND YOU MAY ALSO HAVE OTHER RIGHTS WHICH VARY FROM JURISDICTION TO JURISDICTION.

CAPACITY DEFINITION AND DISCLAIMER

For G-Technology products 1TB or greater: “One gigabyte (GB) is equal to one billion bytes and one terabyte (TB) equals 1,000 GB (one trillion bytes). Accessible capacity will vary from the stated capacity due to formatting and partitioning of the hard drive, the computer’s operating system, and other factors”

For G-Technology products less than 1TB: “One gigabyte (GB) is equal to one billion bytes when referring to hard drive capacity. Accessible capacity will vary depending on the operating environment and formatting.”

Copyright

One gigabyte (GB) is equal to one billion bytes when referring to hard drive capacity. Accessible capacity will vary depending on the operating environment and formatting.

G-Technology and G-SPEED are trademarks of Western Digital Corporation or its affiliates in the United States and/or other countries. Apple, Mac, FireWire, MacBook Pro, Time Machine and the Mac logo are trademarks of Apple, Inc. Microsoft, Windows, Windows Vista and Windows XP are trademarks or registered trademarks of Microsoft Corporation in the US and/or other countries. Other trademarks are the property of their respective owners.

©2016 G-Technology, a Western Digital Corporation brand. All rights reserved. R3 05/16