

Canon

**imageRUNNER™
1300 SERIES**



SERVICE GUIDE

IMPORTANT

**SPECIFICATIONS AND OTHER INFORMATION CONTAINED HEREIN
MAY VARY SLIGHTLY FROM ACTUAL MACHINE VALUES OR THOSE
FOUND IN ADVERTISING AND OTHER PRINTED MATTER.**

**USE OF THIS SERVICE GUIDE SHOULD BE STRICTLY SUPERVISED
TO AVOID DISCLOSURE OF CONFIDENTIAL INFORMATION.**

ALL PRICES LISTED ARE SUBJECT TO CHANGE WITHOUT NOTICE.

**PART NUMBERS LISTED MAY BE CHANGED TO REFLECT
ENGINEERING REVISIONS.**

Published by
Canon U.S.A., Inc.
One Canon Plaza
Lake Success, NY 11042-1198
1-800-OK-CANON
Canon U.S.A. Homepage: <http://www.usa.canon.com>
Canon U.S.A. Internet e-Support Center: <http://www.support.cusa.canon.com>

Printed in the United States of America.

Distributed in the United States by Canon U.S.A., Inc.

This service guide is the property of Canon U.S.A., Inc. All rights reserved.

The information contained in this service guide constitutes confidential information of Canon U.S.A., Inc.

Pursuant to the dealer agreement with Canon U.S.A., Inc., this service guide is solely for reference purposes and may be used only by authorized Dealers of Canon U.S.A., Inc. No part of this service guide may be reproduced or transmitted in any form by any means, electronic or mechanical, for any purpose without the prior written consent of Canon U.S.A., Inc., except as expressly permitted herein.

Pursuant to the dealer agreement with Canon U.S.A., Inc., Dealer agrees to indemnify Canon U.S.A., Inc. and to hold it harmless from and against any claims arising out of Dealer's possession, use, or misuse of this service guide.

Canon U.S.A., Inc. may, in its sole discretion, modify the information and/or specifications contained in this service guide at any time without notice.

Canon is a registered trademark of Canon Inc.
imageRUNNER and NetSpot are trademarks of Canon Inc.
Intel and Pentium are trademarks of Intel Corporation
Microsoft, Windows 95/98/ME/2000/XP and Windows NT are registered trademarks of Microsoft Corporation
IBM is a trademark of IBM Corporation
AXIS is a trademark of Axis Communications AB Corporation
The ENERGY STAR name is a registered trademark of the U.S. Environmental Protection Agency

All other company names and product names may be trademarks or registered trademarks of their respective owners, and are hereby acknowledged.

imageRUNNER™
1300 SERIES

imageRUNNER™
1310

imageRUNNER™
1330

imageRUNNER™
1370F



Table of Contents

I. Service Features.....1

 A. Product Overview1

 B. Optional Accessories1

II. Product Configuration2

 A. Model of imageRUNNER 1300 Series2

 B. Items In The Box2

III. Specifications.....3

 A. imageRUNNER 1300 Series.....3

 B. ADF (Standard for imageRUNNER 1330/1370F).....4

 C. Fax Functionality (Standard for imageRUNNER 1370F)4

 D. Canon Advanced Print Technology (CAPT)5

 E. Axis 1610 Print Server.....5

IV. Service Features6

 A. Serviceability6

 B. Suggested End User Maintenance.....6

 C. Estimated Installation Time6

 D. Installation Procedures.....6

 E. Consumables.....6

V. Service Policy7

 A. Dealer Technical Support7

 B. Escalation Procedure7

 C. Internet Systems and Technical Support8

 D. Recommended Monthly Print/Copy Volume8

 E. Warranty Conditions.....8

VI. Technical Training.....9

 A. Overview.....9

 B. Certification9

 C. Prerequisites.....9

 D. What You Will Learn9

 E. Training Facilities.....9

 F. Course Format.....9

 G. Course Equipment.....10

 H. Course Highlights10

 I. Materials10

VII. Service Requirements11

 A. Authorization Policy11

VIII. Appendix I12

 A. imageRUNNER 1300 Series Limited Warranty12

 B. GPR-10 Drum Unit Limited Warranty.....13

IX. Appendix II.....14

 A. Footnotes14

I. Service Features

A. Product Overview

The imageRUNNER 1300 Series includes the imageRUNNER 1310, imageRUNNER 1330 and imageRUNNER 1370F and are the new digital models in Segment 1. These models offer superior image quality at the speed of up to 13 pages-per-minute. Each model of the imageRUNNER 1300 Series includes, as standard, copying and printing capabilities.

The imageRUNNER 1330 and imageRUNNER 1370F include a 30-sheet ADF. The imageRUNNER 1370F has a full featured, comprehensive Super G3 fax functionality.

Canon Advanced Printing Technology (CAPT) is a new printing technology developed by Canon to produce high image quality prints without the use of PDL's. These models can supply up to a total of 600 sheets of paper from the standard 500-sheet paper cassette and a 100-sheet stack bypass.

As an Energy Star[®] Partner, Canon U.S.A., Inc. has determined that this product meets the Energy Star guidelines for energy efficiency.¹

B. Optional Accessories

1. AXIS™ 1610 Print Server

The optional AXIS 1610 Print Server allows the imageRUNNER 1300 machines to be setup in a networked environment and allow network printing from any computer found on the network. The AXIS 1610 connects directly to any Canon CAPT printer without any additional cabling. The AXIS 1610 is small and compact, equipped with one high-speed parallel port connector that plugs directly into the imageRUNNER's parallel port.

2. Cabinet




An optional Cabinet is available if desk space is limited. The Cabinet also provides an additional area where paper and consumables can be stored.

3. LTR/LGL Cassette (500 sheets)

This optional 500-sheet Cassette offers the ability to set two cassettes with different sized papers for easy replacement. A convenient feature for those that require and frequently use different sized papers such as Letter and Legal.

II. Product Configuration

A. Model of imageRUNNER 1300 Series

Item	Item Number ²
 imageRUNNER 1310	 imageRUNNER 1330
 imageRUNNER 1370F	
imageRUNNER 1310	7775A001AA
imageRUNNER 1330	7775A010AA
imageRUNNER 1370F	7775A018AA
Consumables	
GPR-10 Drum Unit	7815A004AA
GPR-10 Black Toner	7814A003AA
Optional Accessories	
Cabinet	8419A002AA
LTR/LGL Cassette (500 sheets)	7926A002AA
Connective Accessories	
Axis 1610 Print Server	0273V171

B. Items In The Box

imageRUNNER 1300 Series
<ul style="list-style-type: none"> • Main Unit • Copy Tray • Power Cord • P-kit (Drum Unit included) • LTR/LGL Cassette 500 sheets • Modular Cord (imageRUNNER 1370F only) • Fax Destination Label (imageRUNNER 1370F only) • Reference Guide (U.S. English) • Fax Guide (U.S. English) (imageRUNNER 1370F only) • Quick Start Guide (U.S. English) • CD User Software (imageRUNNER 1200-1300) • Copier Machine Warranty (English/French) • Drum Warranty (English/French) • Installation Check List • Registration Card (for U.S.A.) • Registration Card (for Canada) • Notes for AXIS Print Server

- | |
|--|
| <ul style="list-style-type: none"> • User's Guide (Reference Guide) <ul style="list-style-type: none"> • FA7-3860-010 The Part Number² for the User's Guide cannot be ordered as a Sales Item. |
|--|

III. Specifications

Note: All Specifications are subject to change without notice.

A. imageRUNNER 1300 Series

imageRUNNER 1300 Series		
Type	Digital, Multifunction Imaging System	
Copying Method	Indirect Electrostatic Transfer	
Developing System	Dry Monocomponent Toner Projection Development	
Acceptable Originals	Sheets, Books and Three-Dimensional Items (up to 4.4 lbs)	
Maximum Original Size	LGL	
Maximum Copy Size	LGL	
Minimum Copy Size	3" x 5"	
Image Server	Standard 16 MB (no open slots available for additional memory)	
Maximum Copy Reservation	Up to memory capacity	
Scanning Resolution	600 x 600 dpi	
Engine Resolution	600 x 600 dpi	
Interpolated Resolution	1200 dpi x 600 dpi / 2400 x 600 dpi (printing)	
Halftone (Gradations)	256	
Paper Feeding	1 cassette, stack bypass	
Paper Capacity	1 x 500 + 100 (Std. 600 sheets / Max. 600 sheets)	
Manual Bypass	100 sheets	
Paper Output Capacity	100 sheets	
Acceptable Paper Weight	Cassette: 17 to 20-lb., Stack Bypass: 15 to 32-lb.	
Duplexing	No	
Magnification	50 - 200% (in 1% increments)	
Preset Reduce / Enlarge	50%, 64%, 78% / 129%, 200%	
Multipage Copy Speed	Up to 13 cpm	
First Copy Out Time	Approximately 13 seconds or less (from Platen Glass)	
Warm-Up Time	4.5 sec. (From power plug-in) / 1 sec. (From Energy Saver Mode)	
Maximum Copy Run	99	
Automatic Exposure	Automatic or Manual (9 levels)	
Approximate Dimensions (HxWxD)	imageRUNNER 1310	12-7/8" x 18-3/4" x 17-3/8" (327mm x 475 mm x 442 mm)
	imageRUNNER 1330/1370F	15-1/8" x 18-3/4" x 17-3/8" (384 mm x 475 mm x 442 mm)
Installation Space (WxD)	Approximately 32-1/2" x 17-3/8" (825 mm x 442 mm)	
Weight	imageRUNNER 1310	Approximately 48.3 lbs. (21.9 kg)
	imageRUNNER 1330/1370F	Approximately 52.9 lbs. (24.0 kg)
Power Requirements	120V / 60Hz, 3.8A	
Power Consumption	780 watts (Max.)	
Plug	NEMA 5-15R	

B. ADF (Standard for imageRUNNER 1330/1370F)

ADF	
Acceptable Original Size	LGL/LTR/STMT"
Paper Capacity	<ul style="list-style-type: none"> • Up to 30 Sheets LTR, Based on 20 lb. • Up to 15 Sheets LGL, Based on 20 lb.
Different Size Originals	No
Acceptable Paper Weight	14 - 32 lb.
Document Feeding Speed	Approximately 13 ipm
Original Feeding Method	Face Down
Power Source	Directly from the main unit

Note: The ADF is not available for the imageRUNNER 1310.

C. Fax Functionality (Standard for imageRUNNER 1370F)

Note: The Fax Functionality is not available for the imageRUNNER 1310/1330.

Fax Functionality	
Telephone Line Used	PSTN
Number of Line Connections	1
Maximum Original Size	LGL
Effective Image Size	LGL/LTR/STMT
Transmission Time	Approximately 3 seconds per page
Fax Resolution	<ul style="list-style-type: none"> • Standard: 8 pels/mm x 3.85 lines/mm • Fine: 8 pels/mm x 7.7lines/mm • Super Fine: 8 pels/mm x 15.4 lines/mm • Ultra Fine: 16 pels/mm x 15.4 lines/mm
Modem Speed	33,600 bps (Max.)
Compression System	MH, MR, MMR, JBIG
Error Correction	Yes (ECM)
Density Adjustment Level	3 levels
Halftones	64 levels
Communication Mode	G3
Battery Backup Time	Approximately 2 hours (Max.)
Memory Capacity	Standard Fax Memory - 4 MB: (approximately 255 pages)

D. Canon Advanced Print Technology (CAPT)

Canon Advanced Print Technology (CAPT)	
Printing Method	Canon Advanced Printing Technology (CAPT)
Memory	2 MB
Storage	Not Applicable
Continuous Print Speed	Approximately 13 ppm (LTR)
Applicable Paper Size	LTR/LGL/STMT
I/F Connectors	IEEE 1284 Bi-directional Parallel, USB 2.0 Full Speed (12 Mbps)
Resolutions	<ul style="list-style-type: none"> • 600 x 600 dpi • 2400 x 600 dpi (with Auto Image Refinement; AIR)
Other Features	<ul style="list-style-type: none"> • NetSpot 3.3.2 supported • NetSpot Console 2.30 supported • Remote Diagnosis Server 1.21 supported

E. Axis 1610 Print Server

Axis 1610 Print Server	
CPU	32 bit 100Mhz RISC Controller
Memory (RAM)	2 MB DRAM
Memory (ROM)	1 MB (Flash)
Supported Systems	Microsoft® Windows® 95/98, ME, NT 4.0, 2000 and XP
Printing Protocols	Windows: TCP/IP, NetBIOS/NETBEUI
Management Protocols	<ul style="list-style-type: none"> • Netware: IPX • Windows: NetBIOS/NetBEUI or TCP/IP, WINS • TCP/IP: FTP, BOOTP, ARP, RARP, DHCP, ICMP, IGMP, IP, TCP, UDP, HTTP, SNMP, TFTP
Network Management	<ul style="list-style-type: none"> • SNMP-MIB II compliant (over UDP/IP) • Printer MIB • Canon MIB • AXIS MIB included
Logical Connection	IEEE 802.2, IEEE 802.3, SNAP and Ethernet II (Use of frame types simultaneously)
Power Consumption	200 mA max, 12 V (from external power supply)
Dimensions (HxWxD)	7/8" x 2-3/8" x 4-7/8"
Weight	0.22 lb.

IV. Service Features

A. Serviceability

The imageRUNNER 1300 Series does not require scheduled servicing, however, the end-user should perform the suggested maintenance as shown below when required.

B. Suggested End User Maintenance

The end user should perform the following on a regular basis as necessary so that the machine may be kept in the best operating condition at all times.

Item	Instructions
Document Board	Wipe with a cloth moistened with water and wrung well, then dry wipe.
Document Board Glass Retainer	
Platen Roller	
White Plate	
Vertical Size Plate	
Roller	

C. Estimated Installation Time

Description	Estimated Time ³
Main Unit	30 Minutes

D. Installation Procedures

Detailed installation procedures can be found in the imageRUNNER 1200/1300 Series Service Manual.

E. Consumables

Description	Item Number ²	Quantity	Estimated Yield/Life ⁴	Remarks
GPR-10 Drum Unit	7815A004AA	1	24,000 pages	
GPR-10 Black Toner	7814A003AA	1	5,300 pages	Based on 6% coverage on original.

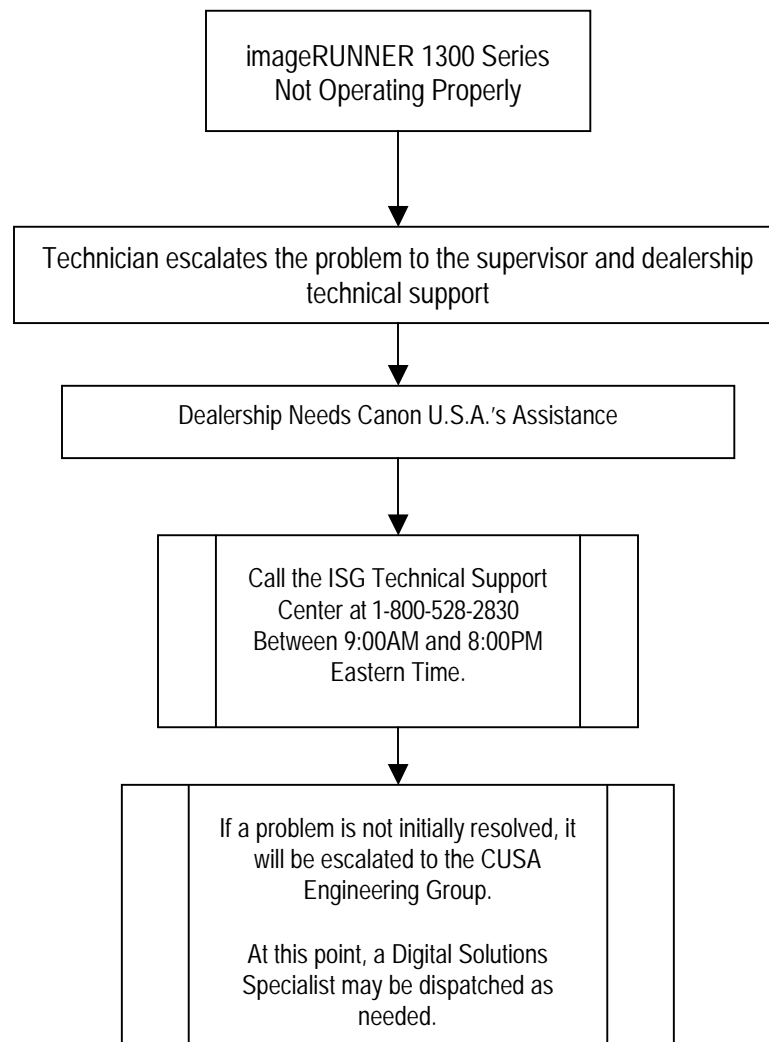
V. Service Policy

A. Dealer Technical Support

The following support mechanisms have been established to deliver high quality and timely technical support services and product information to imageRUNNER 1300 Series dealerships. These support services cover areas such as system and user software, networking and connectivity issues, electro-mechanical operations, and other hardware servicing issues.

B. Escalation Procedure

The Canon Connectivity escalation procedure diagrammed below will be utilized for the support of the imageRUNNER 1300 Series.



C. Internet Systems and Technical Support

Canon U.S.A. Systems and Technical Support Division provides the on-line technical e-Support Center at <http://www.support.cusa.canon.com>.

The e-Support Center is your support resource for Software and Connectivity Support, Hardware Services and digital connectivity Educational Programs. The on-line technical support includes documentation, downloads and a comprehensive database of common problems and solutions 24 hours a day, 7 days a week.

If you do not already have access to the Canon e-Support center, you can register by contacting the Technical Support Center during the business hours of 9AM to 8PM Eastern Time at 1-800-528-2830.

D. Recommended Monthly Print/Copy Volume

The suggested maximum monthly print/copy volume is:

- Up to 20,000 copies

The optimum performance range is approximately:

- 1,000 to 10,000 prints/copies per month.

E. Warranty Conditions

The complete end-user warranty conditions and GP-10 Drum Unit warranty are both located in [Appendix I](#) of this Service Guide.

1. End-User Warranty Conditions

- **imageRUNNER 1300 Series Product Warranty**

90 days after delivery to the original purchaser or 30,000 prints or copies (or a combination of both) whichever comes first.

- **GPR-10 Drum Unit Warranty**

Full Credit:	4,800 prints or copies (or a combination of both) or 30 days from the date of original purchase, whichever comes first.
Prorated Credit:	19,200 prints or copies (or a combination of both) or one year from the date of original purchase, whichever comes first.

2. Warranty Administration Reduction Program (WARP)

Dealers purchasing an imageRUNNER 1300 Series will receive WARP credit during the month following their purchase. The credit will cover the dealer's cost for defective parts with a dealer cost under \$300 replaced during the term of the end-user warranty. Defective parts having a dealer cost over \$300 that were replaced during the term of the end-user warranty should be returned along with all applicable documentation to Canon U.S.A. for processing. Canon's Digital Solutions Specialists and Regional Service Managers can answer questions on this program.

VI. Technical Training

A. Overview

The imageRUNNER 1300 Series Training Program is a Computer Based Training (CBT) solution that will provide the basic knowledge required to properly operate, maintain, and service the imageRUNNER 1310, imageRUNNER 1330 and imageRUNNER 1370F models. The Technician can easily access each of its modules from the main menu as well as navigate to a specific subject. Technicians can easily maneuver through this course, which will focus not only on digital technology, but also on disassembly of major components needed to repair this machine.

B. Certification

The purchase and successful completion of the CBT training package is your only requirement.

C. Prerequisites

The training program assumes that imageRUNNER Connectivity Quest has already been successfully completed by the student.

D. What You Will Learn

You will learn the necessary skills to deliver effective field service as well as the operation of the imageRUNNER 1300 Series models, including important disassembly and troubleshooting skills. This course uses some of the latest technology in the interactivity of the disassembly techniques that will have you not only seeing how the machine is disassembled but allows you to take part in this process.

E. Training Facilities

This self-paced CBT course can be conducted at any facility that is suitable for student learning.

F. Course Format

The imageRUNNER 1300 Series course is a Computer Based Training Course.

G. Course Equipment

1. imageRUNNER 1300 Series Machine

To successfully complete the program, an imageRUNNER 1300 Series machine (imageRUNNER 1310, imageRUNNER 1330 or an imageRUNNER 1370F) is strongly recommended.

2. PC System

The following are PC system requirements for running the course:

- IBM™ compatible computer
- Intel™ Pentium™ II 200mhz or greater
- Windows 95/98/2000/XP, Windows NT
- Minimum 32MB RAM
- Minimum 8X CD-Rom drive
- Sound Card
- External or built-in speakers or headphones
- Color Monitor set at 800 x 600, High Color

H. Course Highlights

The following are the Course Highlights for the imageRUNNER 1300 Series program:

- Students may work at their own pace.
- The Image Formation Process is reviewed.
- Assembly and Disassembly sequences are structured for students to perform step-by-step techniques on training machines.
- Maintenance, Adjustment and Replacement procedures for each major machine area.

Troubleshooting Scenarios are presented for application of knowledge and skills.

I. Materials

The Part Numbers for the imageRUNNER 1300 Series Training Course are as listed below.

Item	Part Number ²
Computer Based Training Program	IU8-0004-000
Service Manual	FY8-13HU-000
Parts Catalog	FY8-31FX-000

VII. Service Requirements

A. Authorization Policy

To become authorized and maintain authorization to service the imageRUNNER 1300 Series, each Authorized Reseller's location must have at least one employee who has successfully completed the imageRUNNER 1300 Series Computer Based Training Program and received certified status.

Canon U.S.A., Inc. recommends that the Service Technician who is certified to service the product have strong computer and networking skills.

VIII. Appendix I

A. imageRUNNER 1300 Series Limited Warranty

Canon U.S.A., Inc. and Canon Canada, Inc. (collectively "Canon") warrant the imageRUNNER 1300 Series product and Canon brand options designed for use with the imageRUNNER 1300 Series product (collectively the "Product") to be free from defects in workmanship and materials under normal use and service for a period of 90 days after delivery to the original purchaser ("Purchaser") or 30,000 prints or copies (or a combination of both), whichever comes first. During such warranty period, Canon shall replace, without charge, any defective part with a new or comparable rebuilt part. This warranty shall not extend to consumables such as paper, chemicals, and toner as to which there shall be no warranty or replacement. Warranty replacement shall not extend the original warranty period of the Product.

This warranty shall only apply if the Product is used in conjunction with compatible computers, peripheral equipment and software. Canon shall have no responsibility for such items except for compatible Canon brand peripheral equipment covered by a separate warranty ("Separate Warranty"). Repairs of such Canon brand peripheral equipment shall be governed by the terms of the Separate Warranty. This warranty does not cover the Canon Drum Unit for the Product, for which a separate warranty is given.

THIS WARRANTY IS IN LIEU OF ALL OTHER WARRANTIES AND CONDITIONS, EXPRESS OR IMPLIED, INCLUDING ANY IMPLIED WARRANTIES AND CONDITIONS REGARDING MERCHANTABILITY OR FITNESS FOR A PARTICULAR PURPOSE, RELATING TO THE USE OR PERFORMANCE OF A PRODUCT. NO OTHER EXPRESS WARRANTY, CONDITION OR GUARANTY, EXCEPT AS MENTIONED ABOVE, GIVEN BY ANY PERSON, FIRM OR CORPORATION WITH RESPECT TO THE PRODUCT SHALL BIND CANON OR ANY AUTHORIZED SERVICE PROVIDER. NO WARRANTY IS GIVEN ON ANY USED PRODUCT.

This warranty shall be void and of no force and effect if the Product is damaged as a result of (a) abuse, neglect, mishandling, alteration, electric current fluctuation or accident, (b) improper use, including failure to follow operating or maintenance instructions in, or environmental conditions prescribed in, Canon's operator's manual or other documentation, (c) installation or repair by other than authorized service representatives qualified by Canon who are acting in accordance with Canon's service bulletins, (d) use of supplies or parts (other than those distributed by Canon) which damage the Product or cause abnormally frequent service calls or service problems, or (e) use of the Product with non-compatible computers, peripheral equipment or software, including the use of the Product in any system configuration not recommended in any manual distributed with the Product. Nor does this warranty extend to any Product on which the original identification marks or serial numbers have been defaced, removed, or altered.

ANY SYSTEM SOFTWARE (WHETHER FACTORY LOADED ON THE PRODUCT OR CONTAINED ON THE SOFTWARE DISKETTES OR CD-ROM'S ENCLOSED WITH, OR ACCOMPANYING, THE PRODUCT), AND ANY UTILITY SOFTWARE, DISTRIBUTED WITH OR FOR THE PRODUCT, IS SOLD "AS IS" AND WITHOUT WARRANTY BY CANON. THE SOLE WARRANTY WITH RESPECT TO SUCH SOFTWARE IS CONTAINED IN THE SOFTWARE MANUFACTURER'S LICENSE AGREEMENT DISTRIBUTED THEREWITH, INCLUDING ANY LIMITATIONS AND DISCLAIMERS THEREON. PLEASE CONTACT CANON IMMEDIATELY IF YOU HAVE NOT RECEIVED A COPY OF THE SOFTWARE MANUFACTURER'S LICENSE AGREEMENT

NEITHER CANON NOR ANY AUTHORIZED SERVICE PROVIDER SHALL BE LIABLE FOR PERSONAL INJURY OR PROPERTY DAMAGE (UNLESS CAUSED SOLELY AND DIRECTLY BY THE NEGLIGENCE OF CANON OR ANY AUTHORIZED SERVICE PROVIDER), LOSS OF REVENUE OR PROFIT, FAILURE TO REALIZE SAVINGS OR OTHER BENEFITS, EXPENDITURES FOR SUBSTITUTE EQUIPMENT OR SERVICES, LOSS OR CORRUPTION OF DATA, STORAGE CHARGES OR OTHER SPECIAL, INCIDENTAL OR CONSEQUENTIAL DAMAGES CAUSED BY THE USE, MISUSE OR INABILITY TO USE THE PRODUCT, REGARDLESS OF THE LEGAL THEORY ON WHICH THE CLAIM IS BASED AND EVEN IF CANON OR ANY AUTHORIZED SERVICE PROVIDER HAS BEEN ADVISED OF THE POSSIBILITY OF SUCH DAMAGES. NOR SHALL RECOVERY OF ANY KIND AGAINST CANON OR ANY AUTHORIZED SERVICE PROVIDER BE GREATER IN AMOUNT THAN THE PURCHASE PRICE OF THE PRODUCT CAUSING THE ALLEGED DAMAGE. WITHOUT LIMITING THE FOREGOING, THE PURCHASER ASSUMES ALL RISKS AND LIABILITY FOR LOSS, DAMAGE OR INJURY TO PERSONS AND PROPERTY OF THE PURCHASER OR OTHERS ARISING OUT OF THE POSSESSION, USE, MISUSE, OR INABILITY TO USE THE PRODUCT NOT CAUSED SOLELY AND DIRECTLY BY THE NEGLIGENCE OF CANON OR ANY AUTHORIZED SERVICE PROVIDER. THIS WARRANTY SHALL NOT EXTEND TO ANYONE OTHER THAN THE ORIGINAL PURCHASER OF THE PRODUCT AND STATES SUCH PURCHASER'S EXCLUSIVE REMEDY.

CONDITIONS OF WARRANTY

Defective parts must be returned to Canon or an Authorized Service Provider with all necessary documentation and will become the property of Canon.

THIS WARRANTY APPLIES TO PRODUCTS SOLD AND USED IN THE U.S.A. AND CANADA ONLY.

CANON U.S.A., INC.

One Canon Plaza
Lake Success, New York 11042

B. GPR-10 Drum Unit Limited Warranty

Canon U.S.A., Inc. and Canon Canada, Inc. (collectively "Canon") warrant the Drum Unit incorporated into the imageRUNNER Series product (the "Product") packaged with this Limited Warranty (the "Drum Unit") to be free from defects in workmanship and materials under normal use and service, other than exterior defects, such as nicks, scratches, or dents, for a period of 30 days after delivery to the original purchaser of the Drum Unit or use of it to make 4,800 prints or copies (or a combination of both), whichever comes first. If the Drum Unit proves to be defective within this warranty period, Canon shall, at its sole option, replace it without charge.

Following the expiration of the 30 day warranty period, and continuing for a period of ONE YEAR after delivery to the original purchaser of the Drum Unit or use of it to make 19,200 prints or copies (or a combination of both), whichever comes first, Canon shall provide a credit ("Credit") to the original purchaser toward a replacement Drum Unit if the Drum Unit fails to operate under normal use and service by reason of any defect in workmanship and materials, other than exterior defects, such as nicks, scratches or dents. The Credit shall be a percentage of Canon's then current dealer price for the replacement Drum Unit determined as set forth in the example below.

Warranty replacement shall not extend the original warranty period of the Drum Unit.

THIS WARRANTY IS IN LIEU OF ALL OTHER WARRANTIES AND CONDITIONS, EXPRESS OR IMPLIED, INCLUDING ANY IMPLIED WARRANTIES AND CONDITIONS REGARDING MERCHANTABILITY OR FITNESS FOR A PARTICULAR PURPOSE, RELATING TO THE USE OR PERFORMANCE OF THE DRUM UNIT. NO OTHER EXPRESS WARRANTY, CONDITION OR GUARANTY, EXCEPT AS MENTIONED ABOVE, GIVEN BY ANY PERSON, FIRM OR CORPORATION WITH RESPECT TO THE DRUM UNIT SHALL BIND CANON OR ANY AUTHORIZED SERVICE PROVIDER. NO WARRANTY IS GIVEN ON ANY USED DRUM UNIT.

This warranty shall be void and of no force and effect if the Drum Unit is damaged as a result of (a) abuse, neglect, mishandling, or alteration of the Drum Unit, a Product Accessory or a Product in which the Drum Unit is incorporated, electric current fluctuation, exposure to light, or accident, (b) improper use, including failure to follow operating or maintenance instructions in, or environmental conditions prescribed in, Canon's operator's manual or other documentation, (c) installation or repair by other than service representatives qualified by Canon who are acting in accordance with Canon's service bulletins, or (d) use of supplies or parts (other than those distributed by Canon) which damage the Drum Unit or cause abnormally frequent service calls or service problems. Nor does this warranty extend to any Drum Unit on which the original identification marks or serial numbers have been defaced, removed, or altered.

NEITHER CANON NOR ANY AUTHORIZED SERVICE PROVIDER SHALL BE LIABLE FOR PERSONAL INJURY OR PROPERTY DAMAGE (UNLESS CAUSED SOLELY AND DIRECTLY BY THE NEGLIGENCE OF CANON OR ANY AUTHORIZED SERVICE PROVIDER), LOSS OF REVENUE OR PROFIT, FAILURE TO REALIZE SAVINGS OR OTHER BENEFITS, EXPENDITURES FOR SUBSTITUTE EQUIPMENT OR SERVICES, LOSS OR CORRUPTION OF DATA, STORAGE CHARGES OR OTHER SPECIAL, INCIDENTAL OR CONSEQUENTIAL DAMAGES CAUSED BY THE USE, MISUSE OR INABILITY TO USE THE DRUM UNIT, REGARDLESS OF THE LEGAL THEORY ON WHICH THE CLAIM IS BASED AND EVEN IF CANON OR ANY AUTHORIZED SERVICE PROVIDER HAS BEEN ADVISED OF THE POSSIBILITY OF SUCH DAMAGES. NOR SHALL RECOVERY OF ANY KIND AGAINST CANON OR ANY AUTHORIZED SERVICE PROVIDER BE GREATER IN AMOUNT THAN THE PURCHASE PRICE OF THE DRUM UNIT CAUSING THE ALLEGED DAMAGE. WITHOUT LIMITING THE FOREGOING, THE PURCHASER ASSUMES ALL RISKS AND LIABILITY FOR LOSS, DAMAGE OR INJURY TO PERSONS AND PROPERTY OF THE PURCHASER OR OTHERS ARISING OUT OF THE POSSESSION, USE, MISUSE, OR INABILITY TO USE ANY DRUM UNIT NOT CAUSED SOLELY AND DIRECTLY BY THE NEGLIGENCE OF CANON OR ANY AUTHORIZED SERVICE PROVIDER. THIS WARRANTY SHALL NOT EXTEND TO ANYONE OTHER THAN THE ORIGINAL PURCHASER OF THE DRUM UNIT AND STATES SUCH PURCHASER'S EXCLUSIVE REMEDY.

CONDITIONS OF WARRANTY

The defective Drum Unit must be returned to Canon, freight prepaid, in the original packaging with all necessary documentation (machine log, a sample copy, warranty claim tag or other documents as required from time to time) to receive the Credit or replacement Drum Unit.

Credits will be based on the then current dealer price for the replacement Drum Unit, and will be pro-rated based on the copies made as indicated by the service report submitted by the Canon Authorized Service Representative.

EXAMPLE OF CREDIT

Drum Unit inoperative after 9,600 prints or copies (or a combination of both) in less than ONE YEAR of use.
Calculation of the Credit may be illustrated by the following example:

Calculation: $\frac{19,200 - 9,600}{19,200} = \frac{9,600}{19,200} = 50\%$ of the dealer price of the replacement Drum Unit.

THIS WARRANTY APPLIES TO DRUM UNITS SOLD AND USED IN THE U.S.A. AND CANADA ONLY

CANON U.S.A., INC.

One Canon Plaza
Lake Success, New York 11042

IX. Appendix II

A. Footnotes

¹ If any of the options are installed, the printer may no longer be Energy Star compliant.

² Part/Item Numbers are subject to change to reflect future engineering revisions.

³ Based on hardware installation only with technician experienced on the imageRUNNER 1300 Series.

⁴ The estimated average values in the field are based on data from supplier. Data is subject to change depending upon many factors including, without limitation, monthly copy volume, environment, type of image printed and customer handling of the equipment.