

COREL®



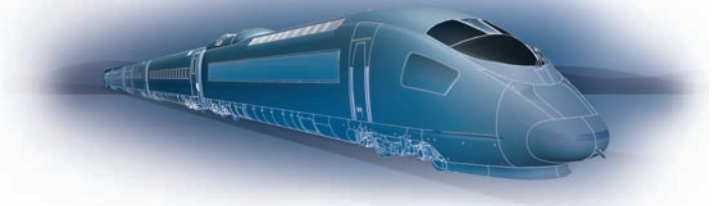
Corel **DESIGNER**®
Technical Suite **X5**
a CorelDRAW® product

Reviewer's Guide

Corel DESIGNER[®]
Technical Suite **X5**
a CorelDRAW[®] product

Contents	
1 	Introducing Corel DESIGNER Technical Suite X5 1
2 	Customer profiles3
3 	What’s included?5
4 	Key features7
	Connect to technical design assets..... 7
	Create technical illustrations with confidence 11
	Publish to technical communication standards..... 15
5 	Upgrade comparisons17
6 	Glossary21

1



Introducing Corel DESIGNER® Technical Suite X5

Corel DESIGNER® Technical Suite X5 is the most complete and cost-effective solution for visual technical communications. It provides a bevy of applications designed to complement a technical illustration workflow. It also offers smooth network deployment with multilingual options for IT administrators, making the suite ideal for businesses of any size.

Connect to technical design assets

With Corel DESIGNER Technical Suite X5, users can start projects quickly from virtually any source material. The new Corel® CONNECT™ lets users search for and access content from disparate sources, such as their computer, an external memory card, a local network, and even online.

The suite also provides industry-leading file format compatibility, 3D visualization options, an add-on for increased 3D CAD capabilities, and many more new and enhanced tools that dramatically speed the technical illustration process. Enhanced support for industry-standard AutoCAD® DWG™ and AutoCAD® DXF™ formats ensures that users won't have to spend precious time dealing with file-conversion errors.

Create technical illustrations with confidence

Corel DESIGNER Technical Suite X5 lets users create illustrations, diagrams, and technical documentation with confidence using specialized technical drawing tools and intuitive features. The inclusion of both CorelDRAW® X5 and

Corel® PHOTO-PAINT™ X5 gives users additional options when outputting illustrations for use in creative projects, such as marketing, sales, or other promotional materials.

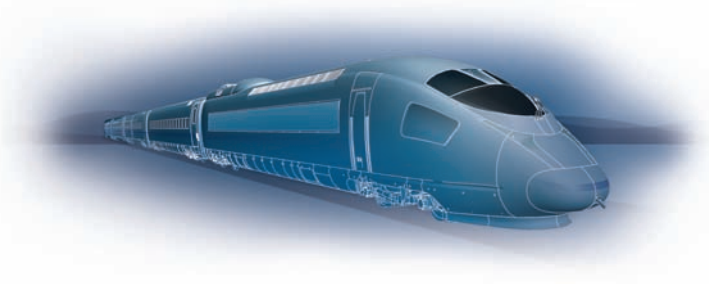
An array of dedicated and specialized technical-illustration features helps users work quickly without compromising precision. By using the tools for creating halos and connector lines, users can add an unprecedented level of clarity to their drawings. In addition, dimension, arrowhead, and line tools let users easily and intuitively create and fine-tune technical illustrations and diagrams. What's more, the projected drawing modes dramatically increase productivity by letting users actively draw on the projected plane, which eliminates the need to draw the object first and then project it in a second step.

Publish to technical communication standards

Technical illustrations appear in documents that vary widely in scale and complexity — for example, furniture construction manuals, parts catalogs, machine assembly instructions, and interactive electronic training manuals (IETM). The media used for output are also diverse, ranging from printed materials to interactive screen illustrations.

To that end, Corel DESIGNER Technical Suite X5 simplifies the workflow of technical illustrators. Users can easily share their work online or in print, thanks to support for a wide range of industry standards, including WebCGM, S1000D, and PDF/A.

2



Customer profiles

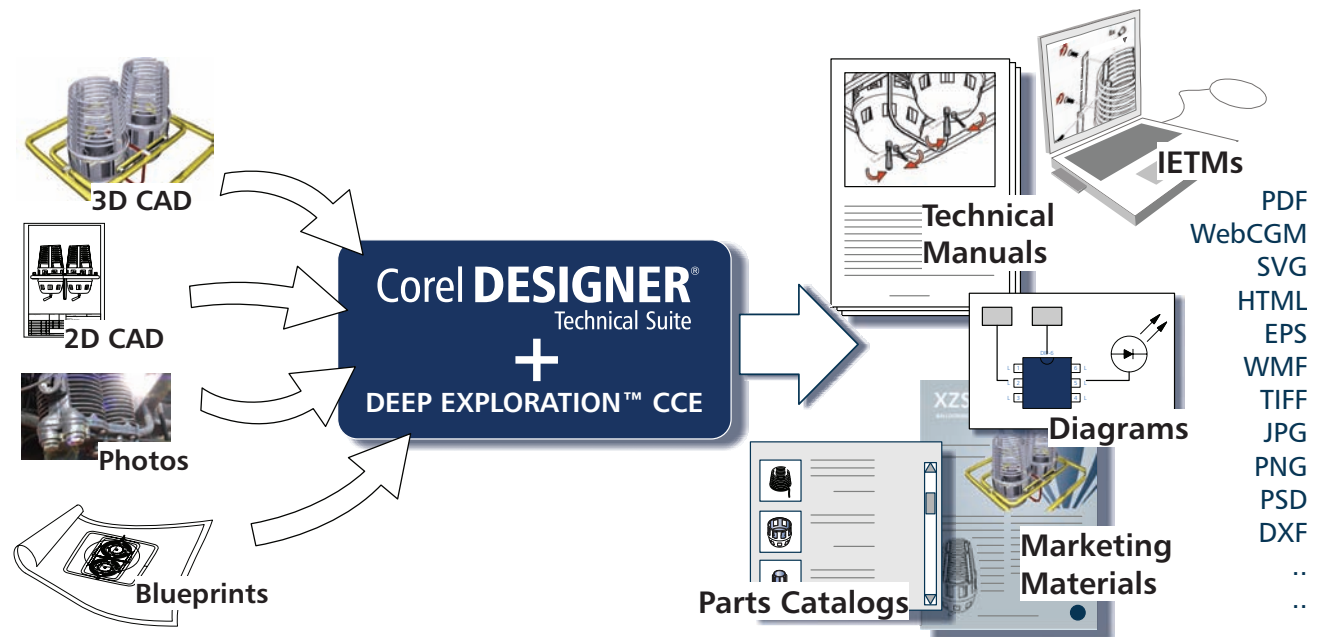
Technical illustrators

Technical Illustrators have formal training in a technical or graphics field. They work for small to medium-sized technical-illustration service providers and for large companies within technical documentation departments. Some technical illustrators are self-employed.

The graphics created by technical illustrators are used in assembly instructions, user guides, parts catalogs, maintenance manuals, schematics, or wiring diagrams. These documents are output to

various media, such as print, the Web, and interactive electronic technical manuals (IETMs).

The files that a technical illustrator receives from colleagues and clients are created with various industry-standard applications. As a result, a wide range of file formats must be easily integrated into the technical illustrator's workflow. With tight deadlines, technical illustrators also need to streamline their processes, especially within a collaborative environment. Therefore, they greatly value the ability to save time by basing new projects on legacy documents.



Corel DESIGNER Technical Suite X5 lets users leverage data from a variety of sources.

Corel DESIGNER® X5 addresses these needs by allowing technical illustrators to import and visualize 3D design files and by providing enhanced support for AutoCAD formats. With the optional add-on, Right Hemisphere® Deep Exploration™ 6 CCE, users can directly import 3D CAD files received from engineering and manufacturing departments.

Technical illustrators can get right to work without having to spend time correcting errors that occur during format conversion. Corel DESIGNER X5 also lets technical illustrators easily access legacy documents, whether in digital format or on hard copy, by providing enhanced support for older Corel DESIGNER files. What's more, technical illustrators can now convert scanned drawings and blueprints to vector graphics by using Corel® PowerTRACE®, a dedicated bitmap-to-vector conversion application that is integrated into Corel DESIGNER X5.

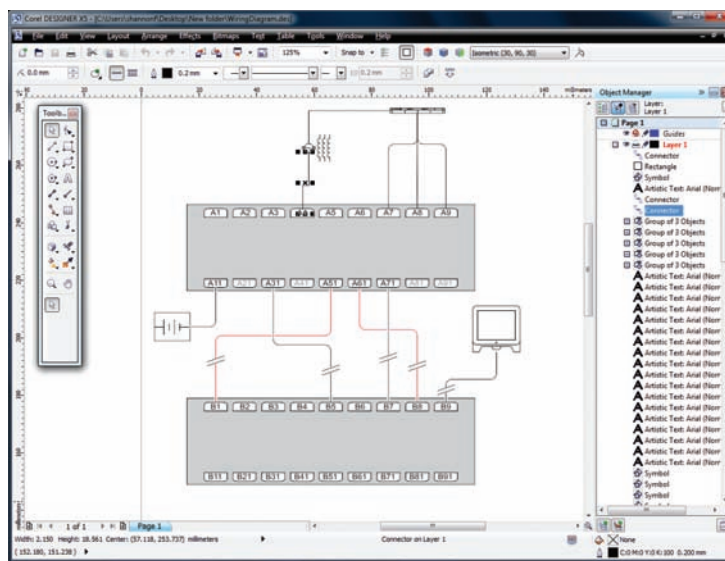
Specialized drawing tools help technical illustrators quickly improve the clarity of their work. With the collaborate tool, CorelDRAW ConceptShare, technical illustrators can share and review files within Corel DESIGNER X5, CorelDRAW X5, and Corel PHOTO-PAINT X5. In addition, technical illustrators can customize the workspace to best suit their working style and can save valuable time by automating tasks.

Technical graphics users

Technical graphics users work in large-enterprise environments. Among their many tasks and responsibilities is the need to create a variety of graphics, including diagrams used in presentation material, floor plans, and schematics. These users may create graphics from scratch or base them on legacy files. They often work collaboratively, and the graphics they create may later be imported for reuse with office-productivity, diagramming, and desktop-publishing software.

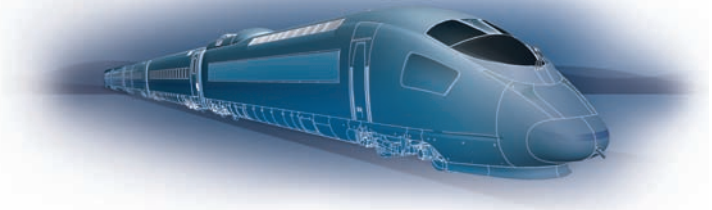
Self-taught in graphic design, these users can confidently turn to the enhanced diagramming tools in Corel DESIGNER X5 to modify existing graphics. Corel PHOTO-PAINT X5, a professional-caliber image editor, allows them to work with photos in a wide variety of formats — including raw files from more than 360 camera models — to create presentations and marketing collateral.

With its extensive collection of learning tools, Corel DESIGNER Technical Suite X5 makes it easy to create impressive images — even for users without a technical design background. Furthermore, technical graphics users can work seamlessly with clients and colleagues in other departments, thanks to the enhanced compatibility with industry-standard file formats, including Microsoft® Visio®, Microsoft Office®, Microsoft Publisher, and PDF 1.7.



Corel DESIGNER X5 is the ultimate software solution for a technical graphics workflow.

3



What's included?

Corel DESIGNER® Technical Suite X5 includes many new and enhanced applications that help streamline the technical illustration workflow.

Main applications

- **Enhanced! Corel DESIGNER® X5:** This specialized application streamlines the technical graphics workflow by offering precision vector drawing, page layout, and diagramming tools that meet the demands of technical illustrators.
- **New! CorelDRAW® X5:** This renowned and intuitive vector- illustration and page-layout application gives technical graphics professionals an additional creative tool without requiring a separate license.
- **Enhanced! Corel® PHOTO-PAINT™ X5:** This professional image-editing application lets users quickly and easily retouch and enhance photos.
- **Enhanced! Corel® PowerTRACE® X5:** This utility lets users quickly and accurately convert bitmaps, such as scanned blueprints, into editable vector graphics.
- **Corel CAPTURE™ X5:** This one-click screen capture utility lets users capture images from their computer screen.
- **New! Corel® CONNECT™:** This full-screen browser lets users peruse the suite's digital content and search their computer, local network, or online sources to quickly find the perfect complement for a design. Fully integrated, it is also available as a docker in Corel DESIGNER X5, CorelDRAW X5, and Corel PHOTO-PAINT X5.

- **Enhanced! Right Hemisphere® Deep Exploration™ 6 CSE:** This application lets users quickly transform 3D designs into accurate 2D graphics, export directly to Corel DESIGNER X5 or create bitmap renderings for retouching with Corel PHOTO-PAINT X5, and leverage existing CAD assets without expensive CAD software or engineering.

Supporting applications

- **New! Microsoft® Visual Studio® Tools for Applications:** Users can create macros to automate tasks and extend functionality within Corel DESIGNER Technical Suite X5. Microsoft® Visual Basic® for Applications is also included and the application programming interface (API) has been enhanced.
- **New! SWiSH miniMax™2:** This utility lets users quickly and easily create stunning interactive animations for use in training materials and other projects.
- **New! PhotoZoom Pro 2:** This plug-in lets users enlarge digital images and export them from Corel PHOTO-PAINT X5.

Documentation

- A comprehensive PDF **User Guide** is included.
- Users can find answers to common questions, detailed reference information, and step-by-step procedural information in the **online Help** by clicking Help menu ▶ Help Topics.
- Available in PDF format, the **Corel DESIGNER® Technical Suite X5 Programming Guide for VBA** helps users automate tasks and create custom solutions.
- Available in PDF format, the **Corel DESIGNER® Technical Suite X5 Deployment Guide** provides detailed installation and deployment information (volume licensed customers only).

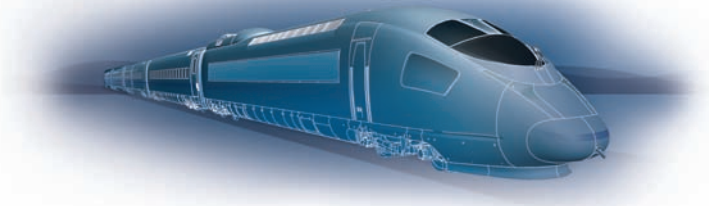
Training

- **Enhanced! CorelTUTOR™**: The suite provides online, project-based tutorials that help users learn Corel DESIGNER X5, CorelDRAW X5, and Corel PHOTO-PAINT X5. In addition to providing tours of each workspace, CorelTUTOR helps users learn to work with dimension lines and callouts, create projected drawings, draw a wiring diagram, and much more.

Minimum system requirements

- Microsoft® Windows® 7, Windows Vista®, or Windows® XP, with latest service packs installed (32-bit or 64-bit editions)
- Intel® Pentium® 4, AMD Athlon™ 64 or AMD™ Opteron
- 1 GB RAM
- 1.4 GB hard disk space (1.6 GB for typical installation without content; up to 6.7 GB needed to install extra content)
- 1024 × 768 or better monitor resolution (768 × 1024 on a Tablet PC)
- Mouse or tablet
- DVD drive
- Microsoft® Internet Explorer® 7 or higher

4



Key features

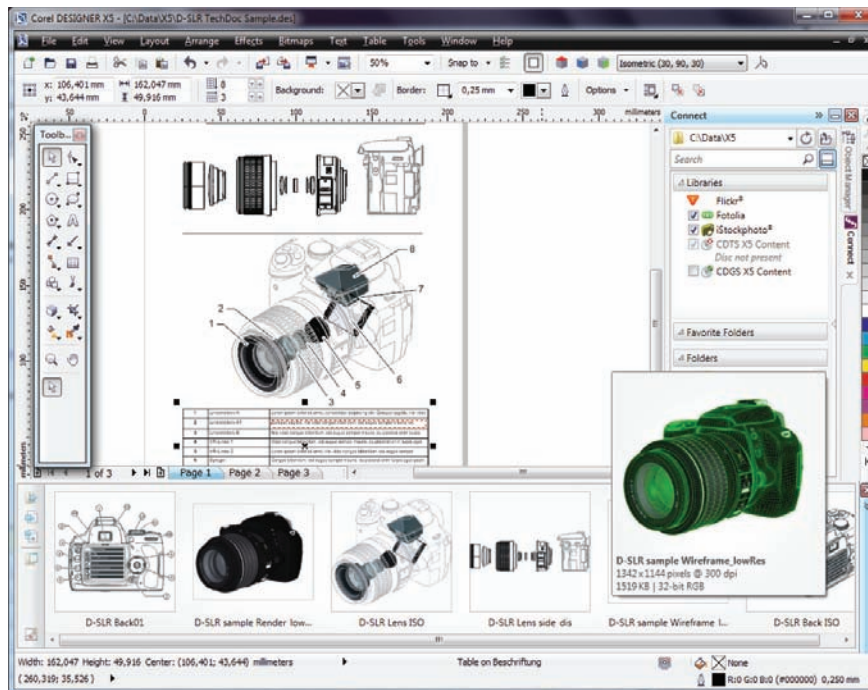
Corel DESIGNER® Technical Suite X5 is the most complete and cost-effective solution for visual technical communications.

Connect to technical design assets

Most technical illustrations originate from data created by CAD engineers in 2D or 3D files. A technical illustrator will often use multiple applications before finishing a design. The ability to exchange this information between applications without losing data is critical to a technical illustrator's workflow.

New! Corel® CONNECT™: This full-screen browser lets users peruse the suite's digital content and search their computer, local network, an external storage device, or online sources to quickly find the perfect complement for a technical drawing. This handy utility is also available as a docker within Corel DESIGNER, CorelDRAW, and Corel PHOTO-PAINT.

What's more, users can keep a collection of content in the tray, which is synchronized between the browser and the dockers. This provides quick access to all required project content.



Corel CONNECT is available as a docker in Corel DESIGNER, CorelDRAW, and Corel PHOTO-PAINT, as well as a separate application.

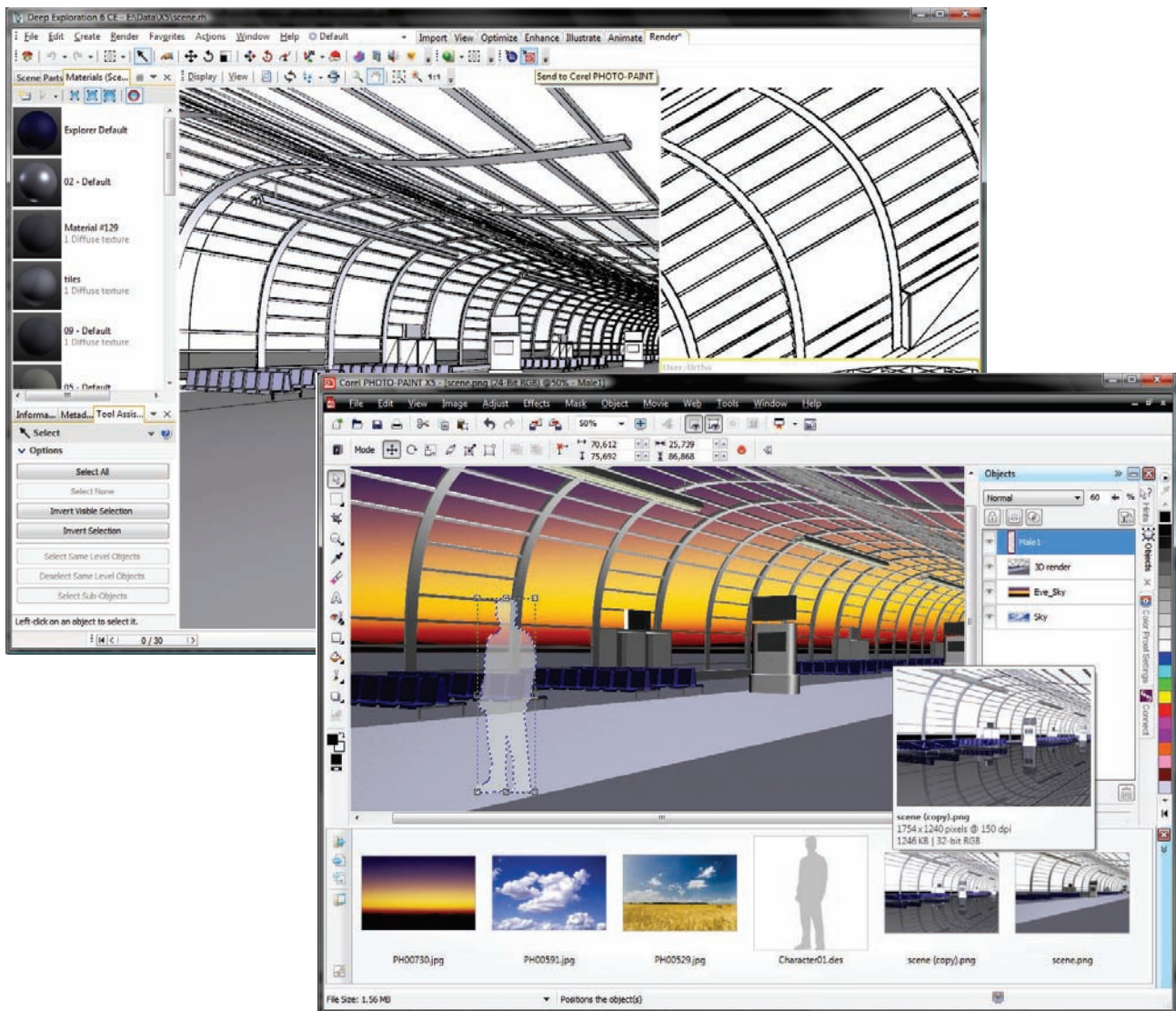
Enhanced! 3D visualization options:

Corel DESIGNER Technical Suite X5 includes Right Hemisphere Deep Exploration 6 CSE, a 3D visualization application. This lets users import, view, modify, and output 3D models, such as AutoCAD, Google® SketchUp™ (SKP), 3D Studio (3DS), and Virtual Reality Modelling Language (VRML).

With Deep Exploration 6 CSE, users can output 3D files as high-quality vector graphics for further editing and refinement with Corel DESIGNER X5. These compact file sizes are highly precise and include support for thick or thin line styles, bezier curves, colored vector fills, and more.

In addition, Corel DESIGNER X5 provides update capabilities for 3D source, which lets users update their 3D visualizations based on modifications made to the 3D source file. This includes support for creating cross-sections and 3D animations, such as complex disassembly views of mechanical parts.

Users can also output 3D files in bitmap format directly to Corel PHOTO-PAINT X5. This output versatility makes Deep Exploration 6 CSE the perfect companion for architects and engineers by letting them easily repurpose 3D models for use in other communication materials, such as marketing collateral and presentations.

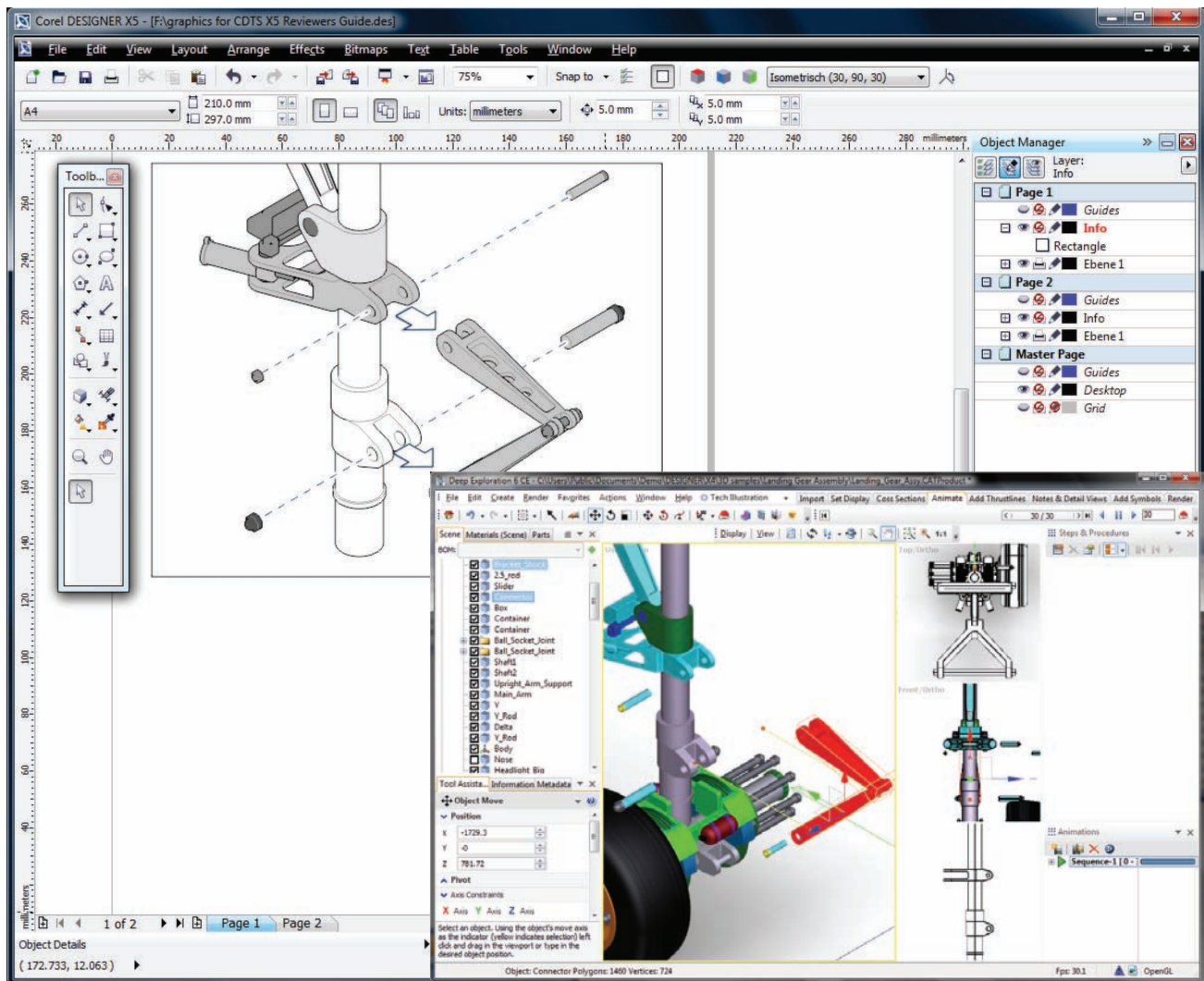


Integration with Deep Exploration 6 CSE lets users output 3D models in bitmap format, perfect for creative refinement in Corel PHOTO-PAINT X5.

Optional Add-On! 3D CAD import: For organizations that require additional 3D editing options, Corel DESIGNER Technical Suite X5 offers an upgrade to Right Hemisphere Deep Exploration 6 CCE. By providing native support for 3D CAD systems used in discrete manufacturing, such as automotive, aerospace, and machinery, Deep Exploration 6 CCE lets users do more with CAD files without the steep learning curve or licensing costs. This streamlines

the workflow of technical communicators, reducing the need to consult design engineers when preparing graphics content.

In addition, Deep Exploration 6 CCE includes the PDF Publishing Module, which lets users output 3D models in 3D PDF format, providing an easy method for sharing these complex models with virtually anyone.



With Deep Exploration 6 CCE, users can do more with 3D CAD models.

Enhanced! 2D CAD support: Corel DESIGNER X5 ensures that users never have to worry about file format compatibility when working with customers or project partners. Improved support for AutoCAD DXF and AutoCAD DWG (R2.5 to 2010) ensures easy, error-free data conversion when these files are imported into Corel DESIGNER X5.

Enhanced! File format compatibility: With support for more than 100 file formats, including AutoCAD DWG and DXF, Microsoft® Visio® (VSD), CGM, SVG, DOC, DOCX, RTF, JPEG, PNG, TIFF, RIF, you can confidently exchange files with customers and colleagues. With DOC and DOCX, text from all languages and formatting are better supported. The TIFF filter provides greater compatibility with a variety of standard file compression methods and multipage files. In addition, for users who create design sketches as the starting point for technical illustrations, imported Corel® Painter™ (RIF) files now retain embedded color profiles.

Enhanced! Adobe® product support: Corel DESIGNER Technical Suite X5 provides enhanced support for the latest Adobe® Illustrator®, Adobe® Photoshop®, and Adobe® Acrobat® products, including Adobe® Creative Suite 5. Users can import and export PSD files using the Adobe Photoshop file format, and both Corel DESIGNER X5 and CorelDRAW X5 will preserve the appearance of adjustment layers and effects created with the Masks palette. In addition, Corel PHOTO-PAINT X5 preserves editable vibrance, grayscale, and camera filter lenses of imported and exported PSD files.

Users can also import and export files using the Adobe Illustrator file format, with support for multiple artboards, preservation of gradient transparency, blob brush strokes, and a new Preflight section.

In addition, users can import and export PDF files, with support for Acrobat® 9, heightened security encryption, and Bates Numbering — including headers and footers. When users export a PDF using the Acrobat 9 file format, they can embed color profiles and define page size by object.

Enhanced! VSTA integration: For increased automation flexibility, users can now take advantage of Microsoft® Visual Studio® Tools for Applications for creating macros and add-ins. With the VSTA automation interface, organizations can easily create connections to Content Management Systems (CMS), as well as Product Lifecycle Management (PLM) and Product Data Management (PDM) systems. This flexibility makes it simple to incorporate Corel DESIGNER Technical Suite X5 into a technical communications workflow.

Windows® search capabilities: Corel DESIGNER Technical Suite X5 was designed to take advantage of the latest innovations from the Windows operating system. This ensures that users can search for their technical design assets from the operating system dialog boxes. Users can search for files by author, subject, file type, date, keyword, or other file property. When saving a file, users can also easily add keywords or other descriptive notes to help them organize their projects. In addition, users can edit file properties from within the suite's applications, from Windows Explorer, or Windows Search. For Windows XP users, the suite continues to support Windows Desktop Search or any other search application that supports the iFilter specification.

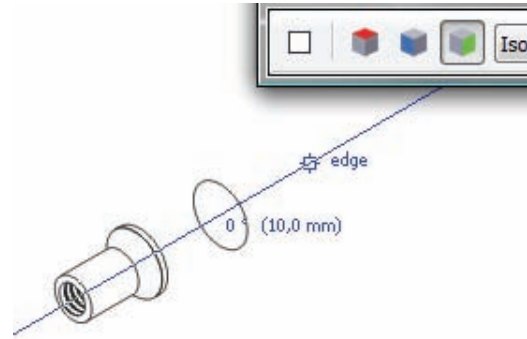
Create technical illustrations with confidence

Technical illustrators require tools designed for very specific tasks. For instance, they need to be able to work quickly and intuitively when adding or fine-tuning dimension lines and text, two-point lines, detailed annotations, callouts, and measurements. The ability to call attention to an element in an illustration by providing a magnified view is also critical.

With Corel DESIGNER Technical Suite X5, users benefit from drawing and diagramming tools that let them envision with precision. In addition to a wide range of color enhancements and the ability to scale rectangles with round corners, the suite includes a professional image-editing application and the power of CorelDRAW X5.

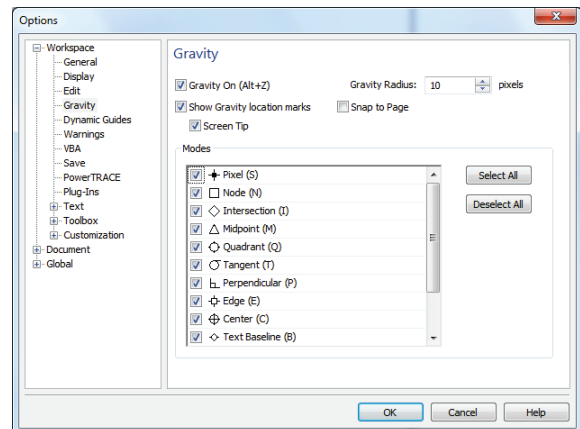
Object Coordinates docker: With the Object Coordinates docker, users can draw, size, and rotate shapes and lines with precision. A live preview facilitates the drawing and editing of objects. The Object Coordinates docker lets users specify the exact coordinates and other measurements of ellipses, circles, polygons, and both straight and complex lines.

Dynamic guides: When creating a design, dynamic guides give technical illustrators speed and precision by helping to align, draw, and move objects in precise relation to other objects. Fully customizable, dynamic guides are temporary guides that appear from the following snap points in objects — center, node, quadrant, and text baseline. For convenience and efficiency, technical illustrators can also display dynamic guides that are tangent, perpendicular, or parallel to objects.



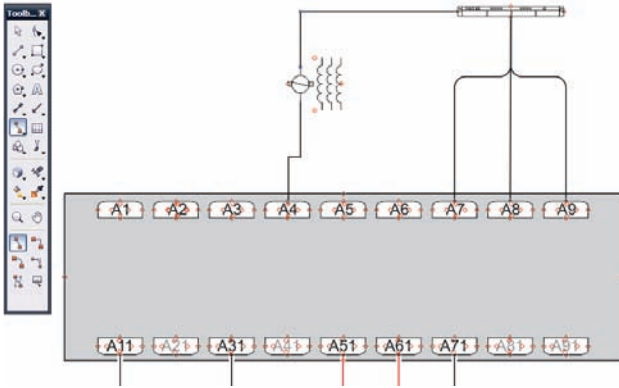
Dynamic guides provide screen tips to help users achieve precision.

Enhanced! Gravity snapping: Gravity snapping lets technical illustrators snap the cursor to various points in objects, making it easy to create and position objects accurately. With Corel DESIGNER X5, users have the new option to Snap to Page. Users can also snap the cursor to perpendicular and text baseline points. In addition, users can customize gravity snapping to perform in the way that best suits their workflow.



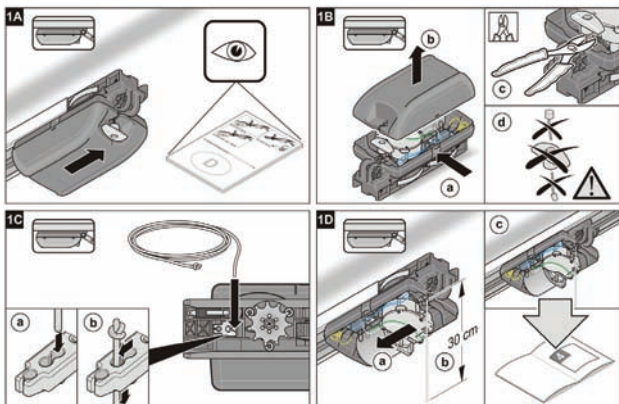
Corel DESIGNER lets users control the behavior of gravity snapping.

Connector lines: Corel DESIGNER X5 offers advanced connector lines, so users can create flowcharts and business diagrams quickly and easily. With Smart Drawing technology, the paths of connector lines are automatically adjusted to circumvent other objects, and freehand strokes are converted to basic shapes and smoothed curves.



Advanced connector lines let users draw detailed, multi-point flow lines in wiring diagrams and flowcharts.

Halos on curves: To make wiring diagrams and flowcharts easier to read and edit, users can now apply halos to connector lines that cross over one another. In addition, users can use halos to highlight the axes of an exploded view in a technical illustration. Halos can also be saved as part of a preset line style, making it easier to reuse them in complex technical illustrations or similar projects.



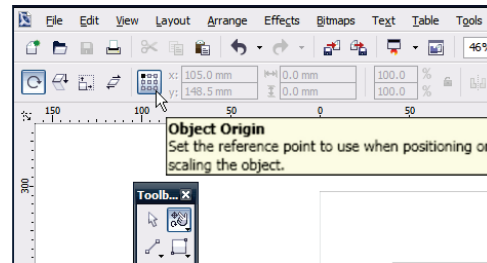
The ability to create halos on curves helps technical illustrators ensure that instructions are clearly understandable.

*Illustration courtesy of HJS - Technische Grafik & Design, Jan Seidl - js.design@dieumsetzung.de

Dimension tools: Corel DESIGNER X5 lets users reverse arrowheads for small dimension lines, customize the extension lines on which dimension lines rest, and work with both dynamic and static dimension text.

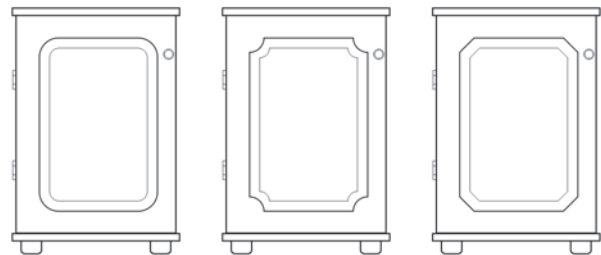
Arrowheads: Specialized arrowhead tools let users enhance dimension, callout, and connector lines. Users can specify arrowhead attributes such as size, offset, and rotation angle. In addition, custom arrowhead attributes can be saved as presets for easy reuse.

New! Object Origin Control: With the new Object Origin Control, users can now move and scale objects by using a specified origin. This time-saving feature gives users more precision when adjusting object position and size.



The new Object Origin Control feature lets users move and scale objects with greater precision.

Enhanced! Round corners: Users can now create chamfered, scalloped, or round corners from the Rectangle property bar. When users stretch a rectangle, rounded corners are preserved without distortion, and the original radius of a corner is maintained during scaling. In addition, corners are now expressed in units of true radii, which makes them easier to work with.



Users can quickly create rectangles with round, scalloped, and chamfered corners from the Rectangle tool options on the property bar.

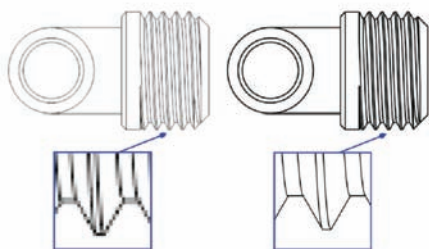
New & Enhanced! Use color with certainty:

With Corel DESIGNER Technical Suite X5, the color management engine has been completely redesigned. The new Default Color Management Settings dialog box lets users set default color profiles, policies, and rendering intents for each application. In addition, a new Document Color Settings dialog box lets users adjust color settings that apply only to the current document. This flexibility makes it easier for users to ensure accurate color representation while also providing a greater level of control for advanced users.

The new Color Proof Settings docker lets users save presets, preview color outputs, and more efficiently prepare technical illustrations for various output devices. Plus, the addition of an Eyedropper tool to various color dialog boxes lets users quickly and conveniently sample and match colors from a document without having to close the dialog box. What's more, the enhanced Color Palette Manager docker includes new PANTONE® profiles, such as the PANTONE® Goe™ system, as well as many other Process and Spot color libraries, such as HKS, Focoltone, and TOYO. Users can also add third-party color palettes when working with multiple applications, ensuring optimal color consistency.

Enhanced! Corel® PowerTRACE™ X5:

Technical illustrators and technical graphics users often base a new illustration on an existing one. Legacy designs can include scanned bitmaps of circuit design blueprints, schematics, hand-drawn illustrations, and drawings created with previous versions of Corel DESIGNER. With Corel PowerTRACE X5, users can now convert bitmaps into editable vector graphics and achieve smoother curves and more accurate results. This version of Corel PowerTRACE produces the best trace results yet.



Corel PowerTRACE X5 lets users convert bitmaps into high-quality vector graphics.

Enhanced! Professional image editing:

With Corel PHOTO-PAINT X5, users can quickly and easily enhance and retouch photos for use in a technical graphics workflow. The enhanced Objects docker helps users achieve greater workflow efficiency by enabling hierarchical organization of project elements and by making commonly used features more accessible. Notable among the improvements are nested object grouping, enhanced object and masks thumbnails, and the ability to lock objects — which prevents them from being accidentally selected, edited, or moved.

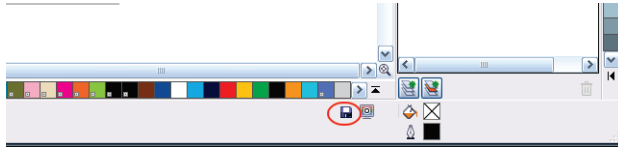
In addition, the new Convert to Grayscale dialog box provides greater control by letting users choose the range of colors used in the conversion. This eliminates results that appear washed out because of predominant blues or reds in the original photo. The new dialog box also provides a preview window, which lets users adjust the colors to create a more realistic conversion.



Corel PHOTO-PAINT X5 provides professional image-editing features, such as the Cutout Lab and the new Convert to Grayscale dialog box (shown above).

New! Windows® Touch support: The suite looks right at home on Windows 7 — users can navigate each application workspace by using finger gestures. Support for taskbar thumbnails lets users switch between open documents quickly.

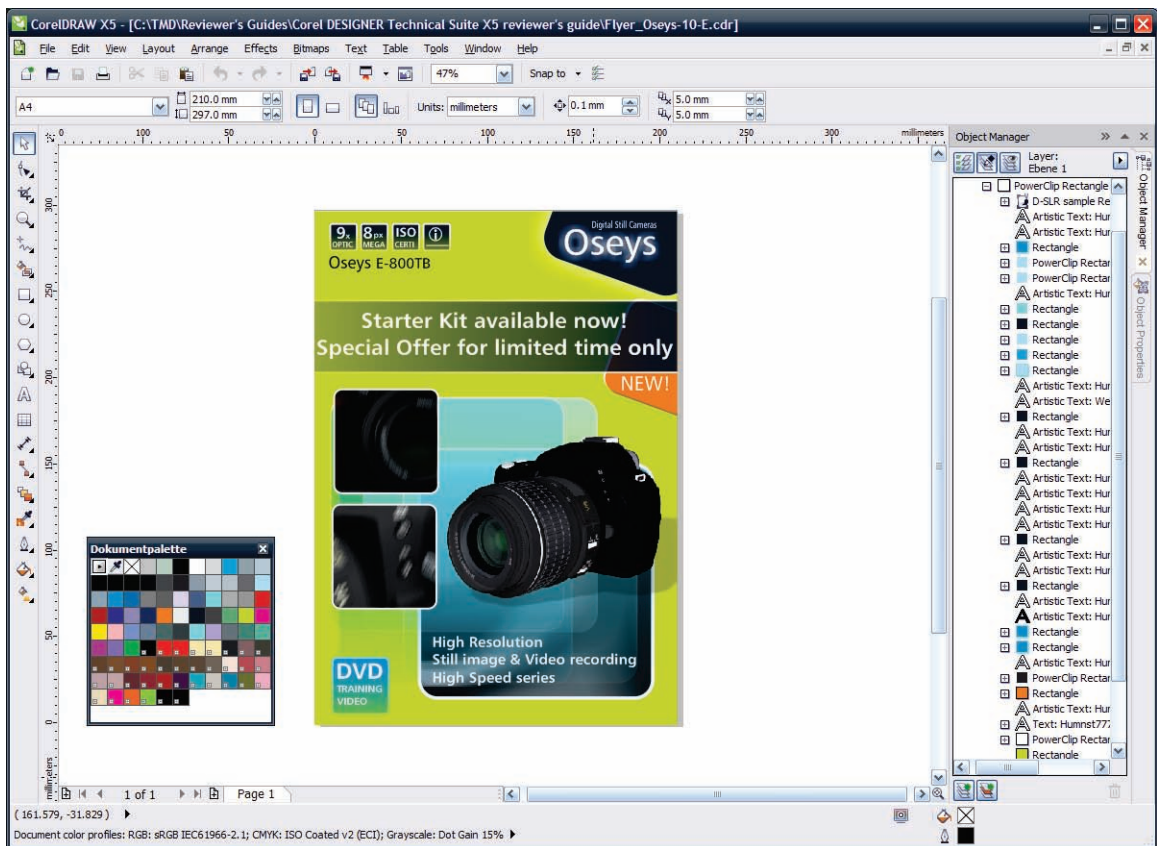
New! Multi-core support: With support for multi-core processing technologies, users can expect Corel DESIGNER Technical Suite X5 to perform faster than ever. Now, when performing processor-heavy tasks, the suite's applications will display an icon indicating that intensive activities are happening in the background while users can continue their work.



The small disc icon (circled in red) lets users know that activity is happening in the background.

New! CorelDRAW® X5: For the first time ever, Corel DESIGNER Technical Suite X5 now includes CorelDRAW X5. With time-saving features such as the improved Mesh Fill tool for creating multi-colored filled objects, CorelDRAW X5 gives users innovative design tools that complement their workflow. And with a collection of learning tools, it's easy for anyone to achieve impressive results without professional training.

This additional creative flexibility makes it easier and more affordable than ever for organizations in technically oriented industries, such as Manufacturing, Energy, High Tech, Chemicals, and Pharmaceuticals, to use Corel DESIGNER Technical Suite X5 for all their graphics needs — from Engineering to Sales and Marketing.



CorelDRAW X5 gives technical illustrators and technical graphics users an additional creative toolset.

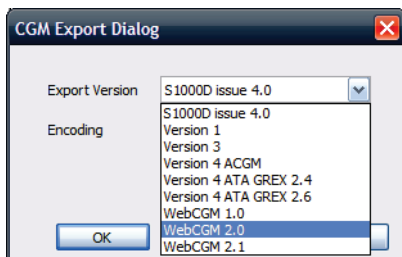
Publish to technical communication standards

The diagrams, graphics, and illustrations that are created by technical graphics professionals are viewed on a number of platforms — print, the web, online Help systems, and IETMs. Therefore, users require output options that ensure they are compliant with these and other standards-based systems, such as CMS, PDM, and PLM.

With Corel DESIGNER Technical Suite X5, users get industry leading file format compatibility, including WebCGM and S1000D, new and enhanced features for outputting Web graphics, and much more.

New & Enhanced! WebCGM 2.x support:

With Corel DESIGNER X5, the WebCGM filter now supports the 2.0, 2.1, and S1000D profiles, allowing users to create, interchange, and deliver standardized technical graphics. These standards are widely used in industries such as aerospace and defense.



The CGM Export dialog box.

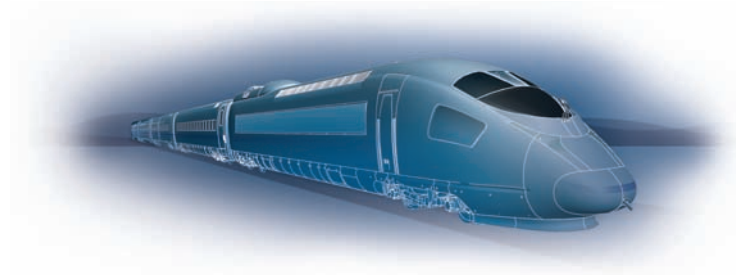
Enhanced! File format compatibility: With support for more than 100 file formats, including AutoCAD DWG and DXF, Microsoft Visio (VSD), CGM, SVG, DOC, DOCX, RTF, JPEG, PNG, TIFF, RIF, and XLSL, users can confidently exchange files with customers and colleagues. In addition, users can easily output their illustrations to the ISO-compliant PDF/A archiving format.

Enhanced! Encapsulated PostScript® (EPS) support: The EPS filter has been enhanced to support files created with PostScript® 3, the most recent level for this industry-standard print output.

New & Enhanced! Export for Web: The suite provides many new and enhanced features specifically for users who produce graphics for web or online Help. A new Export for Web dialog box provides a single access point for common export controls, eliminating the need to open additional dialog boxes when preparing a file for export. It also lets users compare the results of various filter settings before you commit to an output format, making it easier to achieve optimal results.

Corel DESIGNER Technical Suite X5 also provides optimization filters that produce consistent, high-quality web output. In addition, users can now view hexadecimal (hex) color values in the Uniform Fill dialog box, in the Eyedropper tooltip, in the Color docker, and on the status bar. For produces of web and online Help graphics, the ability to specify colors in standard hex format ensures consistent color representation.

5



Upgrade comparisons

Upgrading from previous versions of Corel DESIGNER® Technical Suite

This table lists the new, enhanced, and existing features of Corel DESIGNER Technical Suite X5 for users who are upgrading from a previous version of Corel DESIGNER. A blue check mark (✓) indicates full support, a grey check mark (✓) indicates limited support.

Technical illustration feature	Corel DESIGNER® Technical Suite X5	Corel DESIGNER® Technical Suite X4	Corel DESIGNER® Technical Suite 12	Corel DESIGNER® 10
Connect to technical design assets				
Corel® CONNECT™	✓ New!			
Windows® 7 support	✓ New!			
3D import	✓ Enhanced! with Deep Exploration™ 6 CSE	✓		
AutoCAD® DWG™ / AutoCAD® DXF™ support	✓ Enhanced! r2.5 - v2010	✓ r2.5 - v2009	✓ r12 - v2006	✓ r12 - v2000
Micrografx Designer support (DSF, DRW, DS4)	✓	✓	✓	✓
Raw camera support	✓ Enhanced! (more than 360 D-SLR models)	✓		
Vectorization of scanned blueprints	✓ Enhanced! with Corel® PowerTRACE® X5	✓	✓	✓
Large thumbnail previews	✓	✓		

Technical illustration feature	Corel DESIGNER® Technical Suite X5	Corel DESIGNER® Technical Suite X4	Corel DESIGNER® Technical Suite 12	Corel DESIGNER® 10
File format support	100+ Enhanced!	100+	75+	60+
Create technical illustrations with confidence				
Object Origin Control	✓ New!			
Multi-core support	✓ New!			
Projected drawing modes	✓	✓	✓	
Scalable round corners	✓ Enhanced!	✓	✓	
Hatch fills	✓	✓	✓	
Callout tool	✓ Enhanced!	✓	✓	✓
Custom arrowheads	✓	✓		
Optimize geometric objects (Curve-to-ellipse, Join Curves)	✓ Enhanced!	✓	✓	
Live-preview precision illustration	✓	✓		
Geometric Information dialog box	✓ Enhanced!	✓	✓	
Smart Fill tool	✓	✓		
Interactive Table tool	✓	✓		
Connector line tools	✓	✓	✓	✓
Halos on curves	✓	✓		
Photo editing	✓	✓	✓	
Publish to technical illustration standards				
CGM v4 (WebCGM, ATA Grexchange, ActiveCGM)	✓ (ATA Grex 2.4 + 2.6)	✓ (ATA Grex 2.4 + 2.6)	✓ (ATA Grex 2.4)	
WebCGM 2 + S1000D support	✓ New!			
EPS Level 3 support	✓ Enhanced!	✓	✓	✓
Export for Web dialog box	✓ Enhanced!	✓	✓	✓
PDF output	✓ Enhanced!	✓ (PDF 1.7, PDF/A, password protection)	✓ (PDF 1.5)	✓ (PDF 1.4)

Technical illustration feature	Corel DESIGNER® Technical Suite X5	Corel DESIGNER® Technical Suite X4	Corel DESIGNER® Technical Suite 12	Corel DESIGNER® 10
Web animation tools	✓ New! (SWiSH miniMax)			
Review and collaboration tools	✓	✓		

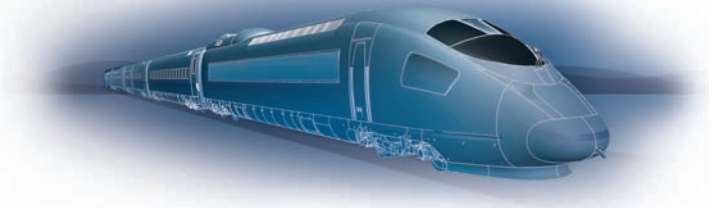
Migrating from CorelDRAW® Graphics Suite X5

This table lists the unique technical illustration features of Corel DESIGNER Technical Suite X5 for users who are working with CorelDRAW Graphics Suite X5. A blue check mark (✓) indicates full support, a grey check mark (✓) indicates limited support.

Technical illustration feature	Corel DESIGNER® Technical Suite X5	CorelDRAW® Graphics Suite X5
Connect to technical design assets		
Corel® CONNECT™	✓	✓
3D import	✓	
3D CAD import (native support for CATIA, Pro/E, SolidWorks, NX, Inventor, STEP, IGES, SAT, and many more)	Optional! with Deep Exploration™ 6 CCE	
AutoCAD® DWG™ / AutoCAD® DXF™ support	✓ Advanced!	✓
Micrografx Designer support (DSF, DRW, DS4)	✓ Advanced!	✓
Raw camera support	✓	✓
Vectorization of scanned blueprints	✓	✓
Windows® 7 support	✓	✓
Technical symbol library	✓	
Large thumbnail previews	✓	✓
File format support	100+	100+
Create technical illustrations with confidence		
Projected drawing modes	✓	
Object Origin Control	✓	
Geometric Information dialog box	✓	

Technical illustration feature	Corel DESIGNER® Technical Suite X5	CorelDRAW® Graphics Suite X5
Callouts	✓ Advanced! (with presets and callout text sources)	✓
Dimension tools	✓ Advanced! (with presets, and both radial and diametric options)	✓
Reverse dimension line arrowheads	✓	
Gravity snapping	✓ Advanced! (with keyboard shortcuts)	✓
Connector line tools	✓	✓
Halos on curves and connector lines	✓	
Photo editing	✓	✓
Review and collaboration tools	✓	✓
Publish to technical illustration standards		
CGM v4 support	✓ Advanced! (WebCGM, ATA Grexchange, ActiveCGM)	✓ (WebCGM 1.0)
WebCGM 2 + S1000D support	✓	
EPS Level 3 support	✓	✓
Export for Web dialog box	✓	✓
PDF output	✓	✓
3D PDF output	✓ Optional! with Deep Exploration™ CCE	

6



Glossary

- **Bounding box:** The invisible box indicated by the eight selection handles surrounding a selected object.
- **Color palette:** A collection of solid colors from which users can choose colors for fills and outlines.
- **Control points:** The points that extend from a node along a curve that is being edited with the Shape tool. Control points determine the angle at which the curve passes through the node.
- **Curve object:** An object that has nodes and control points, which users can manipulate to change the object's shape. A curve object can be any shape, including a straight or curved line.
- **Dimension line:** A line that displays the size of objects or the distance or angle between objects.
- **Drawing plane:** The area bounded by two axes in the drawing profile. The top drawing plane is bounded by the x and z axes. The front drawing plane is bounded by the x and y axes. The right drawing plane is bounded by the y and z axes.
- **Drawing profile:** A group of settings that determines how three-dimensional objects are represented in two dimensions.
- **Dynamic guides:** Temporary guidelines that appear from the following snap points in objects — center, node, quadrant, and text baseline.
- **Encoding:** Determines the character set of text, letting users correctly display text in the appropriate language.
- **Fill:** A color, bitmap, fountain, hatch, or pattern applied to an area of an image.
- **Guideline:** A horizontal, vertical, or slanted line that can be placed anywhere in the drawing window to aid in object placement.
- **Halo:** A mask behind a line that makes it easier to see when the line is on top of another object. Halos are usually the same color as the page.
- **Hotspot:** The area of an object that users can click to jump to the address specified by a URL.
- **Hotspotting:** The process of adding data to objects or groups of objects, so that they respond to events, such as pointing or clicking. For example, users can assign a URL to an object, making it a hyperlink to an external Web site.
- **Interactive Electronic Technical Manual (IETM):** An IETM is a system for accessing and maintaining large volumes of graphical and text-based technical information, which could be used for user training, repair, and operation of a product. IETMs are heavily relied upon in the aerospace and defense industries.
- **Nodes:** The square points at each end of a line or curve segment. Users can change the shape of a line or curve by dragging one or more of its nodes.
- **Object:** A generic term for any item users create or place in a drawing. Objects include lines, shapes, graphics, and text.

- **Outline:** The line that defines the shape of an object.
- **Rendering:** To capture a two-dimensional image from a three-dimensional model.
- **Rotate:** To reposition and reorient an object by turning it around its center of rotation.
- **S1000D:** S1000D is an international specification for the procurement and production of technical publications.
- **Segment:** The line or curve between nodes in a curve object.
- **Skew:** To slant an object vertically, horizontally, or both.
- **Snap:** To force an object that is being drawn or moved to align automatically to a point on the grid, a guideline, or another object.
- **Symbol:** A reusable object or group of objects. A symbol is defined once and can be referenced many times in a drawing.
- **Tangent:** A straight line that touches a curve or an ellipse at a point, but does not cross the curve or ellipse at that point.
- **Text baseline:** The imaginary horizontal line that text characters appear to be placed on.
- **Transparency:** The quality of an object that makes it easy to see through. Setting lower levels of transparency causes higher levels of opacity and less visibility of the underlying items or image.
- **Unicode®:** A character encoding standard that defines character sets for all written languages in the world by using a 16-bit code set and more than 65, 000 characters. Unicode lets users handle text effectively regardless of the language of the text, operating system, or the application.
- **Vector graphic:** An image generated from mathematical descriptions that determine the position, length, and direction in which lines are drawn. Vector graphics are created as collections of lines rather than as patterns of individual dots or pixels.
- **WebCGM:** WebCGM is a profile for the effective application of Computer Graphics Metafiles (CGM) in electronic documents.
- **Workspace:** A configuration of settings that specifies how the various command bars,

commands, and buttons are arranged when users open the application.

About Corel

Corel is one of the world's top software companies, with more than 100 million active users in over 75 countries. We develop software that helps people express their ideas and share their stories in more exciting, creative, and persuasive ways. Through the years, we've built a reputation for delivering innovative, trusted products that are easy to learn and use, helping people achieve new levels of productivity. The industry has responded with hundreds of awards for software innovation, design, and value.

Our award-winning product portfolio includes some of the world's most widely recognized and popular software brands, including CorelDRAW® Graphics Suite, Corel® Painter™, Corel DESIGNER® Technical Suite, Corel® PaintShop Photo™ Pro, Corel® VideoStudio®, Corel® WinDVD®, Corel® WordPerfect® Office, WinZip®, and Corel® Digital Studio™ 2010. Our global headquarters are in Ottawa, Canada, and major offices are in the United States, the United Kingdom, Germany, China, Taiwan, and Japan.

Corel **DESIGNER**[®]

Technical Suite **X5**
a CorelDRAW[®] product

Media Contact

Maureen Miller
PR Manager, Graphics
Corel Corporation
T: 613-728-0826 x1154
E: maureen.miller@corel.com

Corel Corporation

1600 Carling Ave.
Ottawa, ON
Canada K1Z 8R7

COREL[®]

www.corel.com