

CyberLink

# **Power2Go**

User's Guide

## Copyright and Disclaimer

All rights reserved. No part of this publication may be reproduced, stored in a retrieval system, or transmitted in any form or by any means electronic, mechanical, photocopying, recording, or otherwise without the prior written permission of CyberLink Corporation.

To the extent allowed by law, Power2Go IS PROVIDED "AS IS", WITHOUT WARRANTY OF ANY KIND, EITHER EXPRESS OR IMPLIED, INCLUDING WITHOUT LIMITATION ANY WARRANTY FOR INFORMATION, SERVICES, OR PRODUCTS PROVIDED THROUGH OR IN CONNECTION WITH POWER2GO AND ANY IMPLIED WARRANTIES OF MERCHANTABILITY, FITNESS FOR A PARTICULAR PURPOSE, EXPECTATION OF PRIVACY, OR NON-INFRINGEMENT.

BY USING THIS SOFTWARE, YOU AGREE THAT CYBERLINK WILL NOT BE LIABLE FOR ANY DIRECT, INDIRECT, OR CONSEQUENTIAL LOSS ARISING FROM THE USE OF THIS SOFTWARE OR MATERIALS CONTAINED EITHER IN THIS PACKAGE.

The terms and conditions here under shall be governed and construed in accordance with the laws of Taiwan.

Power2Go is a registered trademark along with other company and product names mentioned in this publication, used for identification purposes and remain the exclusive property of their respective owners.

## International Headquarters

<b>Mailing Address</b>	CyberLink Corporation 15F, #100, Min Chuan Road, Hsin Tian City Taipei County, Taiwan, R.O.C.
<b>Web Site</b>	<a href="http://www.gocyberlink.com">www.gocyberlink.com</a>
<b>Telephone</b>	886-2-8667-1298
<b>Fax</b>	886-2-8667-1300

# Contents

<b>1</b>	<b>Introduction.....</b>	<b>1</b>
	Welcome .....	2
	The Power2Go Program .....	3
	Power2Go Express Mode .....	3
	Power2Go Mode .....	5
	System Requirements .....	8
<b>2</b>	<b>Burning.....</b>	<b>9</b>
	Before Burning a Disc .....	10
	Information Tab .....	10
	Data Tab .....	11
	Common Tab .....	12
	Burner Tab .....	13
	Burning Discs .....	14
	Multisession Discs .....	14
	Burn a Data Disc .....	15
	Burn a Music Disc .....	18
	Burn a Movie Disc .....	21
	Copying Discs .....	23
<b>3</b>	<b>Disc Utilities .....</b>	<b>25</b>
	Using Disc Utilities .....	26
	Burning a Disc Image .....	27
	Saving a Disc Image .....	28
	Erasing a Disc .....	29
	Ripping Audio .....	30

<b>Appendix .....</b>	<b>31</b>
Technical Support .....	32
Web Support .....	32
Fax Support .....	32
Telephone Support .....	33
CD vs. DVD .....	34
CD Types .....	35
DVD Types .....	36
<b>Index .....</b>	<b>37</b>

## Chapter 1:

# Introduction

This chapter introduces the CyberLink Power2Go program, starting with a description of the program's functions, followed by an explanation of Power2Go's two burning modes, Power2Go mode and Power2Go Express mode. The chapter ends with a list of recommended system minimum requirements.

This chapter contains the following sections:

- Welcome on p.2
- The Power2Go Program on p.3
- System Requirements on p.8

# Welcome

Welcome to the CyberLink family of digital video tools! CyberLink Power2Go is a disc-burning program, which is a handy utility for burning discs containing movies made using CyberLink's movie-making software, or when you want to make music discs, data discs, and even bootable discs.

Power2Go's main features include the following:

- burns data, music, and movie discs
- supports CD-R/RW, DVD-R/RW, DVD+R/RW, and DVD-RAM disc types
- supports Audio CD, .MP3, .WMA, .WAV music formats
- erases discs that contain unwanted content
- copies entire discs
- Power2Go Express mode supports drag-and-drop to desktop icons for burning in the fewest number of steps
- supports CD text for additional textual information (such as a description of the artist or song) with audio tracks

# The Power2Go Program

The CyberLink Power2Go program can run in either of two modes: Power2Go Express mode or Power2Go mode. Power2Go Express mode is the simpler of the two modes, allowing you to burn discs in two steps. Power2Go mode, on the other hand, offers you access to more options and disc utilities.

## Power2Go Express Mode

Power2Go Express mode uses the following icons, placed on your desktop:



Drag data files to this icon to burn a data disc. (See Burn a Data Disc in Power2Go Express Mode on p.15.)



Drag music files to this icon to burn a music disc. (See Burn a Music Disc in Power2Go Express Mode on p.18.)



Drag video files to this icon to burn a movie disc. (See Burn a Movie Disc in Power2Go Express Mode on p.21.)



Double-click this icon to copy a disc. (See Copying Discs on p.23.)

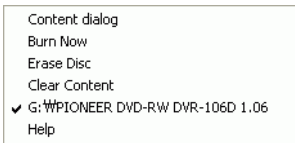
**Note:** You can click and drag the entire column of icons to a different location on your desktop, or right-click on a single icon to move it individually.

Dragging files in appropriate formats to these icons prepares Power2Go to burn a disc. (You can double-click the icon to open a window for further modification of your burning configuration. See Burn a Data Disc in Power2Go Express Mode on p.15, Burn a Music Disc in Power2Go Express Mode on p.18, Burn a Movie Disc in Power2Go Express Mode on p.21, or Copying Discs on p.23.)

If you do not need to add any more files or modify your burning configuration, click the **Rec** button after dragging files onto the icon. Burning begins immediately, and the process is displayed on the icon. (Click **Stop** to cancel the burning process.)

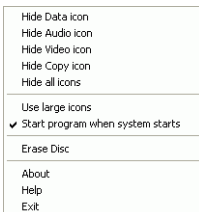


Right-clicking an icon on the desktop opens a command menu to control burning tasks.



Click a menu item to perform the corresponding task.

Right-clicking the icon on the system tray opens a command menu to control Power2Go Express mode icons, to erase a disc, and to control the Power2Go program.



Use one of the **Hide** options to remove an icon from display on the desktop. (The option then becomes **Show**, allowing you to display the icon again.) You can also choose to display large and small icons on the desktop.

Check the **Start program when system starts** option to run Power2Go whenever you power on your computer.

Click **Erase Disc** to erase a rewritable disc.

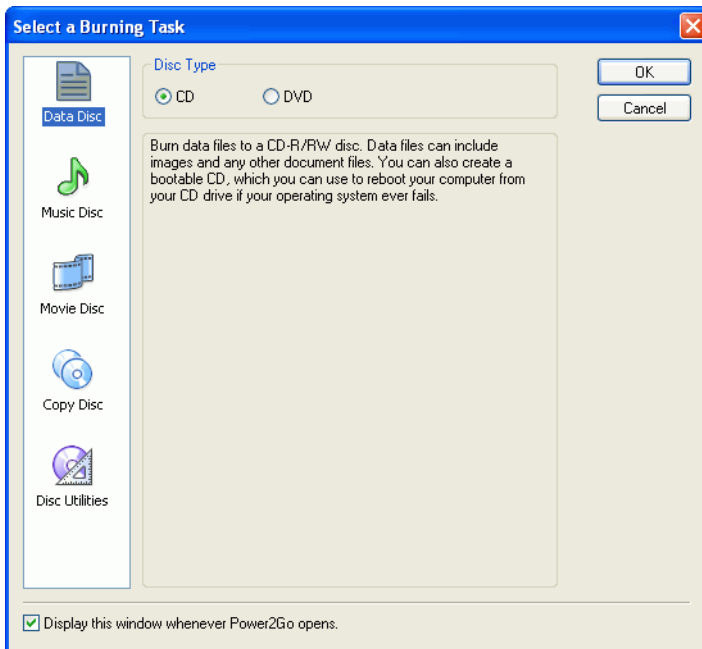
Click **About** to display Power2Go version information, click **Help** to open the help file, and click **Exit** to close the Power2Go program.



## Power2Go Mode

Power2Go mode opens in a program interface. By default, the Select a Burning Task window opens each time you run the program in Power2Go mode. Power2Go mode also displays a program window with a row of buttons that allow you to perform each of Power2Go's different tasks.

To begin a burning task in the Select a Burning Task window, click an icon, then click **OK** to begin your task.



You can disable the Select a Burning Task window by unchecking the **Display this window whenever Power2Go opens** option.

The icons available in the Select a Burning Task window are described below:



Burns data files to disc.



Burns audio files to disc.



Opens the CyberLink PowerProducer (or EZProducer) program to create a movie disc.



Copies disc content onto a blank disc.



Burns a disc image to disc.



Saves a disc image to your hard drive.

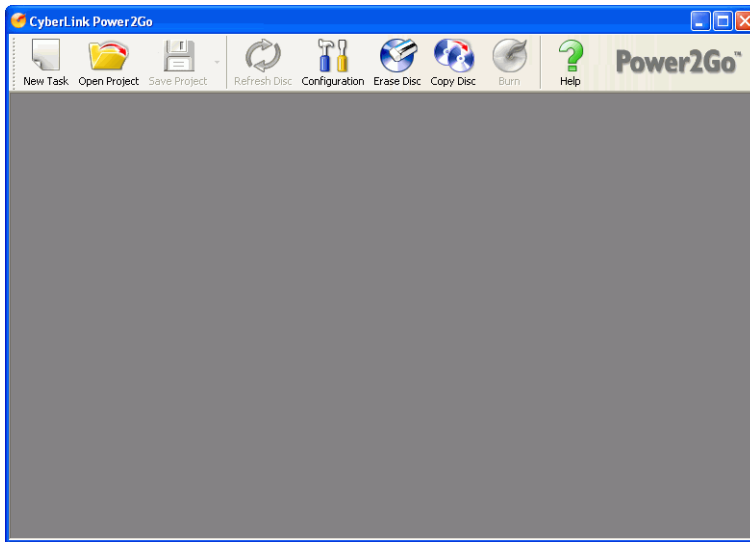


Erases a rewritable disc.








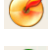




Copies audio tracks from an Audio CD to your hard drive.

When you close (or disable) the Select a Burning Task window, the Power2Go program displays a row of buttons at the top, which allow you to access certain important functions.



The available buttons are described below:

- |   |   |
|---|---|
|    | Starts a new burning task.  |
|    | Opens an existing project.  |
|   | Saves an existing project. Click the down-arrow to save a project under a different name. |
|  | Refreshes the displayed disc/drive information.   |
|  | Displays disc and drive configuration information.  |
|  | Erases a disc.  |
|  | Copies a disc.  |
|  | Burns a disc.   |
|  | Opens the help file.  |
|  | Displays Power2Go version information.  |

# System Requirements

The system requirements listed below are recommended as minimums for burning. You may find that your system, while meeting these recommended minimums, requires expanded capacity during specific burning tasks.

Minimum System Requirements	
<b>OS</b>	<ul style="list-style-type: none"><li>• Windows XP/2000/ME/98SE</li><li>• (Windows XP/2000 recommended)</li></ul>
<b>Screen Resolution</b>	<ul style="list-style-type: none"><li>• 800x600 pixels</li></ul>
<b>Memory</b>	<ul style="list-style-type: none"><li>• 128MB SDRAM for music and data burning</li><li>• 256MB (512MB recommended) for video burning</li></ul>
<b>CPU</b>	<ul style="list-style-type: none"><li>• VCD (MPEG-1) and DVD (MPEG-2) production: Intel Pentium III 800 MHz, or AMD Athlon 700 MHz</li><li>• DV Tape to MPEG-1 real-time capture: Intel Pentium III 800 MHz or AMD Athlon 800 MHz</li><li>• DV Tape to MPEG-2 real-time capture: Intel Pentium 4 2.2 GHz or AMD Athlon XP 2200+</li><li>• DV Tape to MPEG-1/MPEG-2 non real-time capture: Intel Pentium III 800 MHz or AMD Athlon 700 MHz</li></ul>
<b>HDD Space</b>	<ul style="list-style-type: none"><li>• 1GB for making VCDs</li><li>• 5GB for making DVDs</li></ul>
<b>Video Capture to Disc</b>	<ul style="list-style-type: none"><li>• Analog video capture: USB or PCI capture devices compliant to WDM standards</li><li>• DV Camcorder video capture: IEEE 1394 I/O devices compliant with OHCI standards</li><li>• DSC photo import: USB interface</li></ul>

## Chapter 2:

# Burning


CyberLink Power2Go offers a number of burning functions, including burning data discs, music discs, movie discs, and bootable discs, as well as copying the entire contents of a disc. You can burn to CD or DVD in a variety of formats. Before burning a disc, you can set your burning configuration to ensure proper burning.

This chapter contains the following sections:

- Before Burning a Disc on p.10
- Burning Discs on p.14
- Copying Discs on p.23

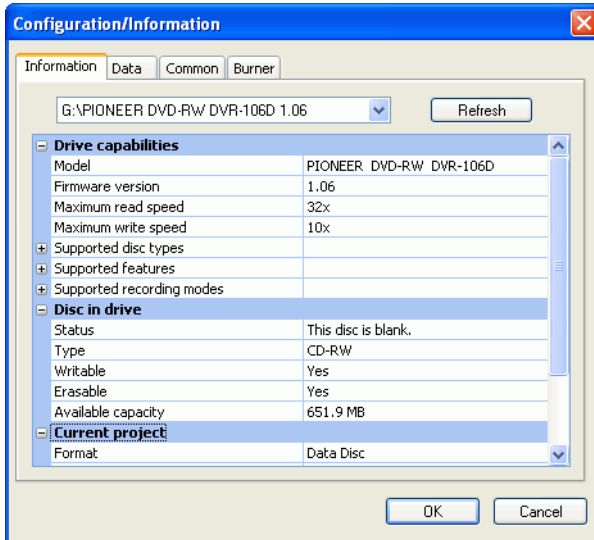
# Before Burning a Disc

Before you begin burning discs, you may want to set your burning configuration to match your burning drive and the discs you want to burn. The **Configuration/Information** button opens a window that displays disc and drive configuration information.

To open the Configuration/Information window, click  in the main program window. The Configuration/Information window opens, displaying four tabs that contain different configuration information. (Only the Information tab appears if you have closed the Select a Burning Task window without starting a burning task.) Each of these tabs is described below.

## Information Tab

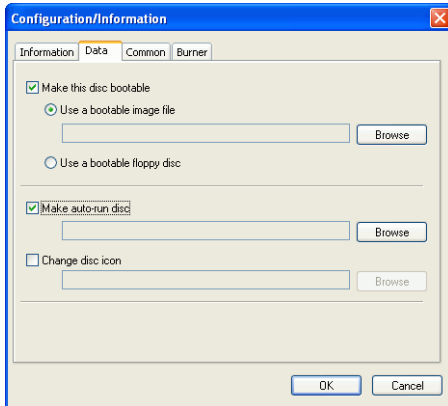
The Information tab displays information about the selected disc drive, the disc in the drive, as well as the current project. Click the + box next to an item to view more detailed information.



- If you change discs or select a different drive, click **Refresh** to ensure that the most updated information is displayed.

## Data Tab

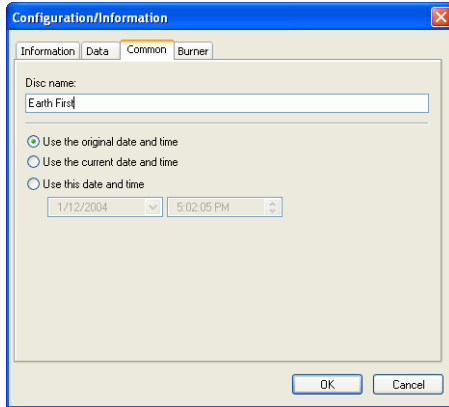
The Data tab displays options for making a data disc.



- **Make this disc bootable:** You can create a bootable CD/DVD, which you can use to boot your computer from your CD/DVD drive if your operating system ever fails. Burning a bootable CD/DVD requires a bootable file (either on your hard drive or on a bootable floppy disc). Check **Use a bootable image file**, then click **Browse** to locate the file you want to use, or check **Use a bootable floppy disc**.
- **Make auto-run disc:** When this option is enabled, a computer runs the selected auto-run file when the disc is inserted. Click **Browse**, then locate the auto-run file you want to use. When this option is disabled, the computer takes no action when the disc is inserted.
- **Change disc icon:** You can change the icon that appears when this disc is viewed in Windows Explorer. Click **Browse**, then locate the icon (.ICO) file you want to use.

## Common Tab

The Common tab displays options available when burning any kind of disc (i.e.: data, music, or movie).

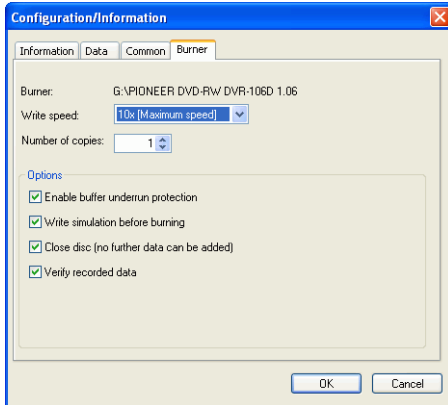


- **Disc name:** Enter a name for the disc. The disc name appears on a disc player when the disc is played.
- **Use original date and time:** This option uses the original date and time of the files that will be burned to the disc.
- **Use current date and time:** This option uses the current date and time on your computer.
- **Use this date and time:** This option uses a date and time of your choosing.



## Burner Tab

The Burner tab displays information about your disc burner and options for controlling its functioning.



- **Burner:** Displays the disc burner installed on your system.
- **Write speed:** Select a write speed from the drop-down list.
- **Number of copies:** Enter the number of copies of the disc you want to burn.
- **Enable buffer underrun protection:** Enabling this option ensures that data is written to disc without interruption. (An interruption in data can result in an unusable disc.)
- **Write simulation:** Perform a write simulation to verify that your burner can burn to the disc at the selected speed without error.

**Note:** If you have enabled buffer underrun protection or have previously burned discs using the current configuration, you do not need to run a simulation.

- **Close disc:** Checking this option write-protects the disc. No further data can be appended to the disc after the current burning session.
- **Verify recorded data:** Check this option to compare recorded data to the source data to ensure accurate burning.

# Burning Discs

The fastest way to burn any kind of disc is to drag and drop files from Windows Explorer onto the appropriate icon on the desktop. This method of burning is called Power2Go Express mode. This method is presented first in each of the following sections, as you may be able to accomplish your burning task without even opening the Power2Go program.

If you need to select more detailed options, or if you are already working in the Power2Go program, you can perform the same burning tasks within the program itself. This method of burning is called Power2Go mode, and is described after the Power2Go Express procedure, being the slightly longer and more complex process.

## Multisession Discs

Multisession discs allow you to append additional data after the original burning session. Power2Go always creates a multisession disc whenever you burn a CD-R, CD-RW, DVD-R, or DVD+R disc. Therefore, you can continue to add content to a multisession disc until the disc is full or closed, at which point you can no longer append any further data.

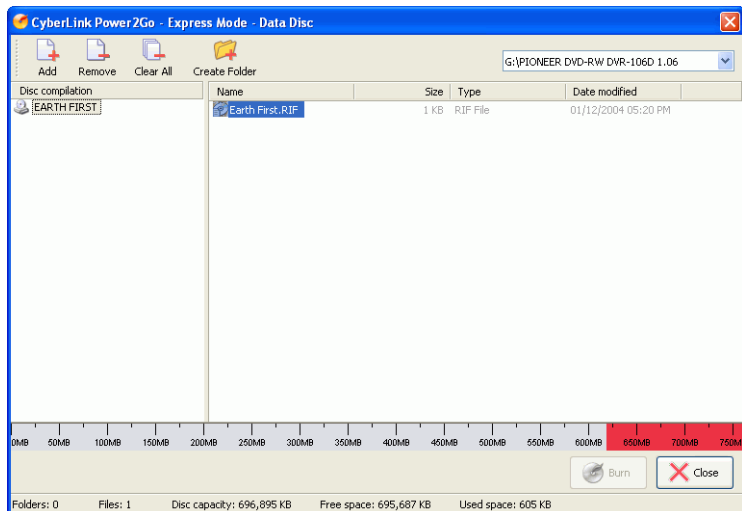
## Burn a Data Disc

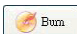
The Data Disc option allows you to burn data files to a CD-R/RW, DVD-R/RW, DVD+R/RW, or DVD-RAM disc. Data files can include images and any other document files. You can also create a bootable CD/DVD, which you can use to boot your computer from your CD/DVD drive if your operating system ever fails.

### Burn a Data Disc in Power2Go Express Mode

To burn a data disc in Power2Go Express mode, do this:

1. Open Windows Explorer, then locate the files you want to burn.
2. Drag the files to the **Data** icon.
  - To modify your burning configuration, double-click the **Data** icon. The Data Disc window opens, in which you can add or remove data files if you wish.

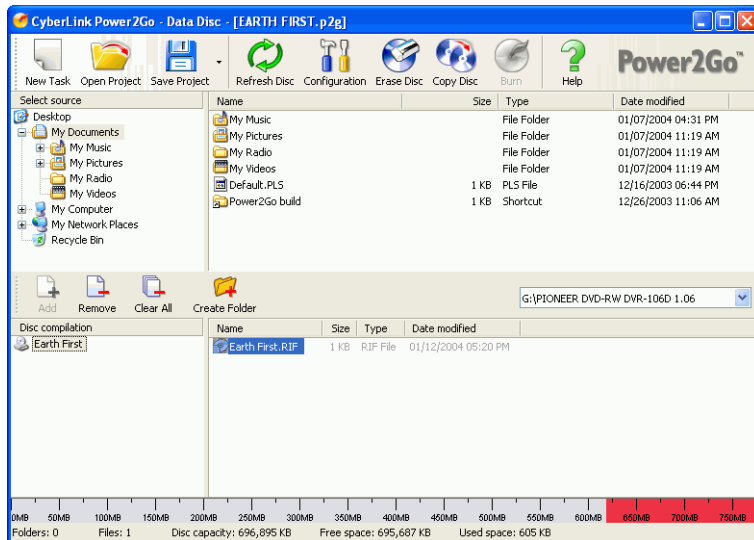






3. Click **Rec** on the **Data** icon. (In the Data Disc window, click ) Power2Go burns the disc. When the task is completed, a screen message appears, informing you of the status.

## Burn a Data Disc in Power2Go Mode

To burn a data disc in Power2Go mode, do this:


1. Open Power2Go. In the Select Burning Task window, click the **Data Disc** icon, then select the type of disc (CD or DVD) you want to create. The Data Disc window opens.



2. Highlight the files or folders you want to burn, then drag to the destination disc or click **Add**.
  - To remove a file, highlight it, then click .
  - To remove all files, click .
  - To create a new folder in the directory, click . A folder is created under the current directory.
3. When you have added all of the content that you want to burn, click . The Configuration/Information window opens to the Burner tab, to allow you to set your burning configuration. (For more information, see Burner Tab on p.13.)
4. Make any necessary modifications to your burning configuration, then click **Burn**. Power2Go burns the disc. When the task is completed, a screen message appears, informing you of the status.


### Burn a Bootable Data Disc from an Image File

To burn a bootable data disc from an image file, do this:

1. Open Power2Go. In the Select Burning Task window, click the **Data Disc** icon, then select **CD** or **DVD**.
2. Click . The Configuration/Information window opens to the Data tab.
3. Check the **Make this disc bootable** option.
4. Check the **Use a bootable image file** option. Click **Browse**, then locate the bootable disc partition. Click **OK**.
5. Click **Burn**. Power2Go burns the disc. When the task is completed, a screen message appears, informing you of the status.

### Burn a Bootable Data Disc from a Floppy Disc

To burn a bootable data disc from a bootable floppy disc, do this:

1. Open Power2Go. In the Select Burning Task window, click the **Data Disc** icon, then select **CD** or **DVD**.
2. Click . The Configuration/Information window opens to the Data tab.
3. Check the **Make this disc bootable** option.
4. Check the **Use a bootable floppy disc** option.
5. Click **Burn**. A prompt appears, asking you to insert your bootable floppy disc.
6. Insert the floppy disc, then click **OK**. Power2Go copies the disc. When the copy task is complete, the disc drive opens and a prompt appears, asking you to insert your target disc.
7. Insert your target disc into your burning drive, then click **OK**.
8. Power2Go burns the disc. When the task is completed, a screen message appears, informing you of the status.

## Burn a Music Disc

The Music Disc option allows you to burn audio files to a CD or DVD. Depending on the audio file format you burn to, you may require a special player or player software to be able to listen to your disc.

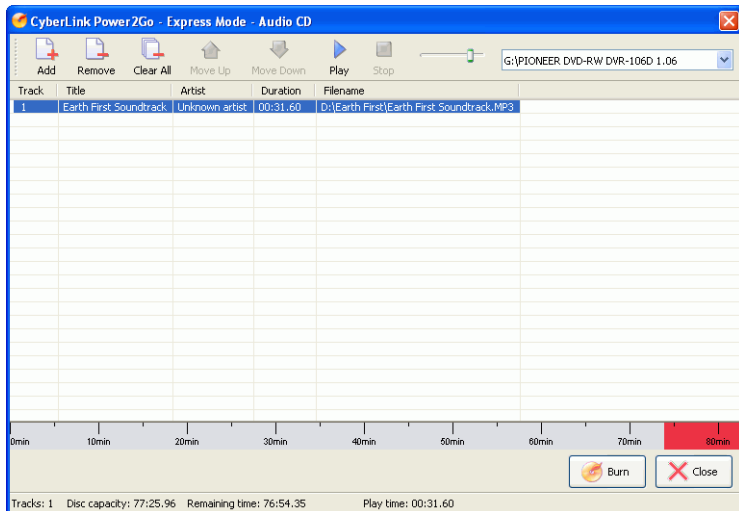
### Burn a Music Disc in Power2Go Express Mode

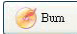
To burn a music disc in Power2Go Express mode, do this:

1. Open Windows Explorer, then locate the files you want to burn.
2. Drag the files to the **Music** icon.

**Note:** Music discs burned in Power2Go Express mode are burned in Audio CD format.

- To modify your burning configuration, double-click the **Music** icon. The Audio CD window opens, in which you can add or remove music files if you wish.

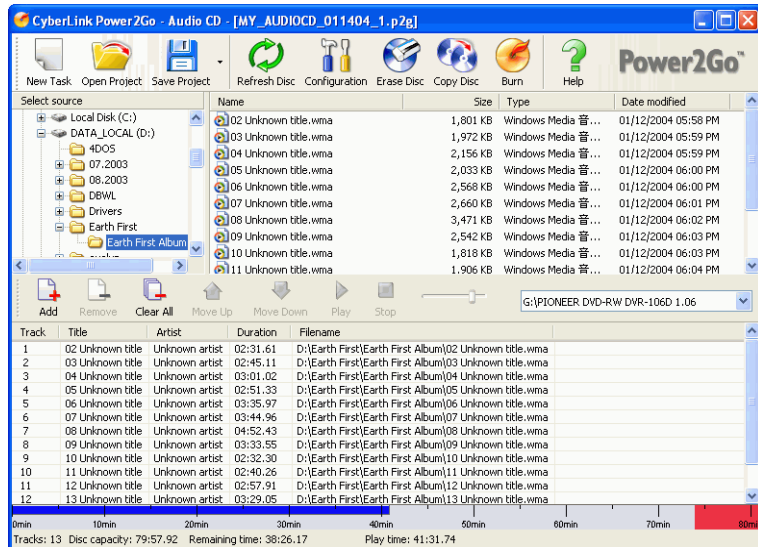






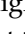
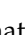


3. Click **Rec** on the **Music** icon. (In the Audio CD window, click ) Power2Go burns the disc. When the task is completed, a screen message appears, informing you of the status.

## Burn an Audio CD Music Disc in Power2Go Mode

To burn an Audio CD music disc in Power2Go mode, do this:

1. Open Power2Go. In the Select Burning Task window, click the **Music Disc** icon. Select **CD**, then check the **Audio CD** format. The Audio Disc window opens.

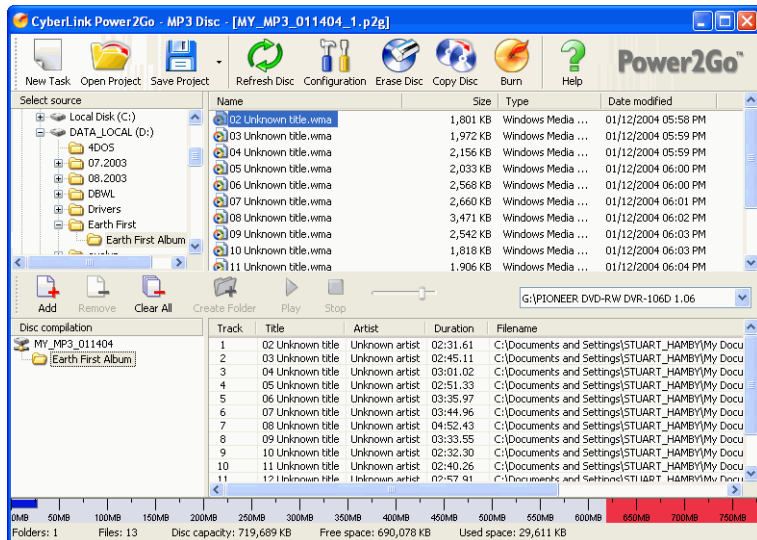







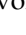
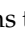
2. Locate your music files in the directory on the left. Highlight the files you want to burn on the right, then drag to the track listing at the bottom of the window or click .
  - To remove a file, highlight it, then click .
  - To remove all files, click .
  - To move a track up or down in the track listing, highlight it, then click  or .
  - To listen to a track before burning, highlight it, then click . Click  to stop. Drag the slider to set the audio volume level.
3. When you have added all of the content that you want to burn, click . The Configuration/Information window opens to the Burner tab. (See Burner Tab on p.13.)
4. Modify your burning configuration (if necessary), then click **Burn**. Power2Go burns the disc. When the task is completed, a screen message appears, informing you of the status.

## Burn an MP3/WMA Music Disc in Power2Go Mode

To burn an MP3/WMA music disc in Power2Go mode, do this:

1. Open Power2Go. In the Select Burning Task window, click the **Music Disc** icon. Select **CD** or **DVD**, then check the **MP3** or **WMA** format. The MP3/WMA Disc window opens.



2. Locate your music files in the directory on the left. Highlight the files and folders you want to burn on the right, then drag to the directory tree at the bottom of the window or click .
  - To remove a file, highlight it, then click .
  - To remove all files, click .
  - To create a new folder in the directory, click . A folder is created under the current directory.
  - To listen to a track before burning, highlight it, then click . Click  to stop. Drag the slider to set the audio volume level.
3. When you have added all of the content that you want to burn, click . The Configuration/Information window opens to the Burner tab. (See Burner Tab on p.13.)
4. Modify your burning configuration (if necessary), then click **Burn**. Power2Go burns the disc. When the task is completed, a screen message appears, informing you of the status.



## Burn a Movie Disc

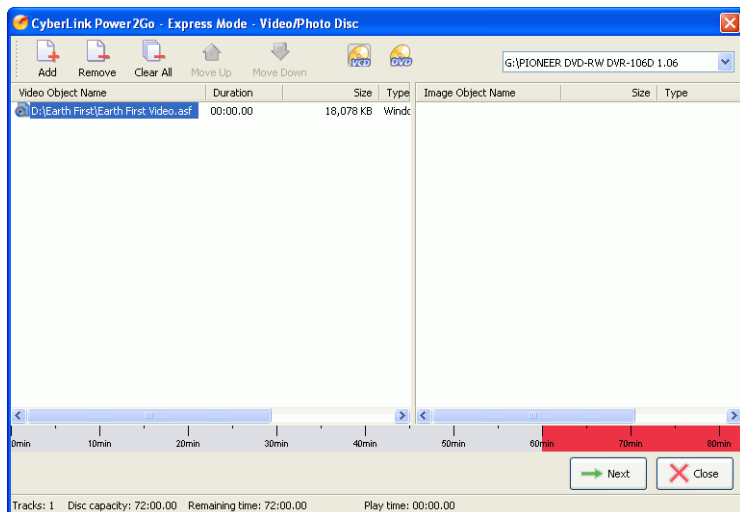
The Movie Disc option allows you to burn movie files to CD/DVD. Burning a movie disc in Power2Go opens the CyberLink PowerProducer program, which gives you more expanded movie-making options.

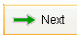
**Note:** Depending on the version of Power2Go that you purchase, you may have either the PowerProducer or EZProducer program. For help using either program, please see the help file included in that program.

### Burn a Movie Disc in Power2Go Express Mode

To burn a movie disc in Power2Go Express mode, do this:

1. Open Windows Explorer, then locate the files you want to burn.
2. Drag the files to the **Movie** icon.
  - To modify your burning configuration, double-click the **Movie** icon. The Video/Photo Disc window opens, in which you can add or remove video or photo files if you wish.



3. Click **Rec** on the **Movie** icon. (In the Video/Photo Disc window, click ) The CyberLink PowerProducer (or EZProducer) program opens.

## Burn a Movie Disc in Power2Go Mode

Selecting the Movie Disc option opens the CyberLink PowerProducer (or EZProducer) program, which offers you a wide range of capturing, editing, and burning functions.

**Note:** Depending on the version of Power2Go that you purchase, you may have either the PowerProducer or EZProducer program. For help using either program, please see the help file included in that program.


# Copying Discs

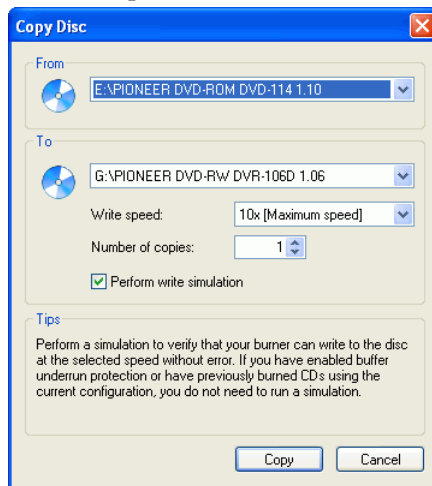
The Copy Disc option allows you to make an exact copy of a disc of any format. However, you must copy the disc contents onto a blank disc of the same format. (You cannot, for example, copy content from a CD onto a DVD.)

**Note:** Some discs may not be copied if they are copy-protected or contain errors.

The procedures for copying a disc from inside the Power2Go program or in Power2Go Express mode are very similar. Only the first step for opening the Copy Disc window is slightly different.

To copy a disc, do this:

1. Open Power2Go. In the Select Burning Task window, click the **Copy Disc** icon , then click **OK**. (In Power2Go Express mode, simply double-click the **Copy Disc** icon.) The Copy Disc window opens.



2. Select your source and target drives.

**Note:** If you are copying “on the fly” (i.e.: using a different source and burning drive), insert your source disc into your source drive and your target disc into your burning drive. Click **OK** to copy your disc in one step, skipping the second prompt.

3. Select a recording speed and enter the number of disc copies you want to burn. If you want to perform a write simulation before you burn the disc, check **Perform write simulation**.
4. Click **Copy**. The disc drive opens and a prompt appears, asking you to insert your source disc.
5. Insert your source disc into your drive, then click **OK**. Power2Go copies the disc. When the copy task is complete, the disc drive opens and a prompt appears, asking you to insert your target disc.
6. Insert your target disc into your burning drive, then click **OK**. Power2Go burns the copied data onto the disc. When the task is completed, a screen message appears, informing you of the status.

## Chapter 3:

# Disc Utilities

In addition to simple disc burning functions, CyberLink Power2Go offers a number of other utilities for managing your discs and your disc image files, as well as for ripping audio tracks from CD onto your hard disk. These utilities are available in the Select a Burning Task window in Power2Go mode.

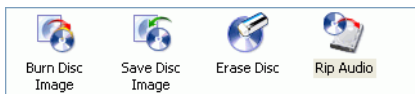
This chapter contains the following sections:

- Using Disc Utilities on p.26
- Burning a Disc Image on p.27
- Saving a Disc Image on p.28
- Erasing a Disc on p.29
- Ripping Audio on p.30

# Using Disc Utilities



Power2Go contains a number of utilities for managing disc content. To display Power2Go's disc utility icons, open Power2Go, then click **Disc Utilities**. Icons for the available disc utilities appear in the central panel of the window.



The disc utilities are as follows:



Burns a disc from a disc image. (See [Burning a Disc Image](#) on p.27.)



Saves a disc image for future burning. (See [Saving a Disc Image](#) on p.28.)



Erases content from a rewritable disc. (See [Erasing a Disc](#) on p.29.)



Copies audio tracks from an Audio CD to your hard disk. (See [Ripping Audio](#) on p.30.)

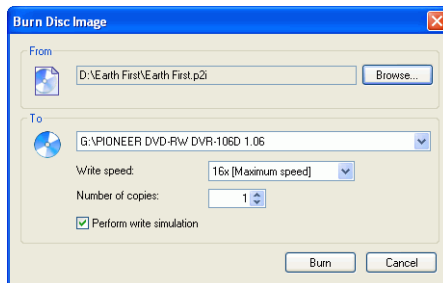
# Burning a Disc Image



A disc image is a duplicate of the content and file structure that is destined to be burned to disc. Using Power2Go, you can burn a disc image to CD or DVD. Burning a disc image to disc allows you to restore a saved disc image to disc as well as burn disc images created by the CyberLink Image drive.

To burn a disc image, do this:

1. Start CyberLink Power2Go.
2. In the Select a Burning Task window, click **Disc Utilities**, then select **Burn Disc Image**.



3. Click **Browse...** and locate the folder that contains the disc image.
4. Insert your disc and select your drive in the drop-down list.
  - You can select a different write speed or enter the number of copies you want to burn, if desired. If you want to perform a write simulation before you burn the disc, check **Perform write simulation**.
5. Click **Burn** to start. Power2Go displays the real-time progress of the task. When the task is completed, a screen message appears, informing you of the status.

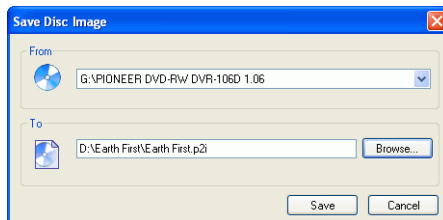
# Saving a Disc Image



Save a disc image onto your hard drive. This function is useful for backing up your disc onto your hard drive for future burning tasks.

To save a disc image, do this:

1. Start CyberLink Power2Go.
2. In the Select a Burning Task window, click **Disc Utilities**, then select **Save Disc Image**.



3. Insert your disc. If necessary, select your source drive in the From drop-down box.
4. Enter the destination folder and disc image file name in the To entry box, or click **Browse...**, select a folder, and enter the disc image file name.
5. Click **Save** to save the disc image. Power2Go displays the real-time progress of the task. When the task is completed, a screen message appears, informing you of the status.



# Erasing a Disc



If you are using a rewritable disc, you can erase content that has been previously recorded onto it. This allows you to reuse the same discs over and over without the need to continually buy new discs. Most manufacturers suggest that current rewritable discs can be written to about 1,000 times.

To erase a disc, do this:

1. Start CyberLink Power2Go.
2. In the Select a Burning Task window, click **Disc Utilities**, then select **Erase Disc**.



3. Insert your disc and select your burner.
4. Select an erasing method.
  - The **Quick erase** option erases the disc index contained on the disc.
  - The **Full erase** option erases all of the content the disc contains.
5. Click **Erase** to start. Power2Go displays the real-time progress of the task. When the task is completed, a screen message appears, informing you of the status.

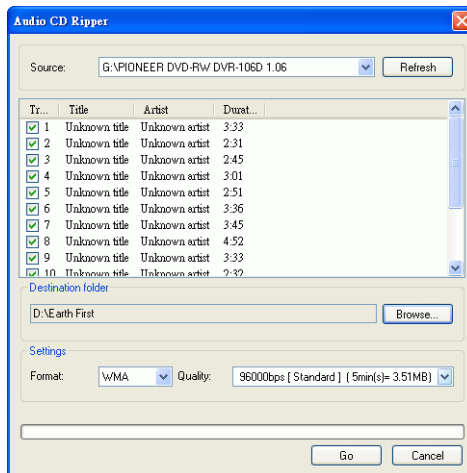
# Ripping Audio



The Rip Audio function copies audio tracks from an Audio CD to your hard drive in .MP3, .WAV, or .WMA format. Keeping copies of your CDs on your hard drive allows you to play songs from numerous CDs without changing discs in your computer's disc drive and also saves wear and tear on your physical CD collection.

To rip audio files to your hard drive, do this:

1. Start CyberLink Power2Go.
2. In the Select a Burning Task window, click **Disc Utilities**, then select **Rip Audio**.



3. Insert your disc and select your drive.
  - If you change discs or select a different drive, click **Refresh** to ensure that the most updated information is displayed.
4. Select the track(s) you want to rip to your hard drive.
5. Locate the folder you want to rip the audio tracks to.
  - You can select a different audio format or quality, if desired.
6. Click **Go** to start. Power2Go displays the real-time progress of the task. When the task is completed, a screen message appears, informing you of the status.

# Appendix

This chapter contains technical support information as well as a reference section to help answer questions you may have about the different disc technologies available in CyberLink Power2Go.

This chapter contains the following sections:

- Technical Support on p.32
- CD vs. DVD on p.34

# Technical Support

Before asking CyberLink for technical support, please refer to this user's guide or online help for information. It contains all the information you generally need to use the program. You may also find answers quickly by contacting your local distributor/dealer.

If your problem is not resolved using the above methods, please feel free to contact CyberLink for technical support.

## Web Support

Solutions to your problems are available 24 hours a day and at no cost on our Web sites:

[support.gocyberlink.com](http://support.gocyberlink.com)

[www.gocyberlink.com](http://www.gocyberlink.com)

In addition to frequently asked questions, we also provide troubleshooting techniques, the latest in product news, and other relevant information.

## Fax Support

Use our fax support number to get technical support quickly without spending time on the phone:

**(886) 2-8667-1300**

**Note:** Technical support is only offered to registered users, so please make sure to include your **CD-key** (located on your CD case) when faxing.

# Telephone Support

You are welcome to call the CyberLink's Technical Support Hotline at the phone number listed below during hours of availability:

## CyberLink Technical Support Information

<b>Support Phone Number</b>	<b>(886) 2-8667-1298</b>
<b>Support Hours</b>	<b>9:00 a.m. -5:00 p.m. Taiwan time (GMT +8:00) Monday to Friday, excluding holidays</b>

**Note:** Technical support is only offered to registered users. Please be sure to have your **CD-key** (located on your CD case) on hand when calling.

When calling for support, please have your computer ready and provide us with the following information:

- **your registered CD-key**
- the product version
- the version of Windows installed on your system
- the hardware devices on your system and their specifications
- the wording of any warning messages that were displayed (You may want to write this down or make a screen capture.)
- a detailed description of the problem and under what circumstances it occurred

# CD vs. DVD

CDs and DVDs look the same and do pretty much the same thing: store data. Both can be used to record data, music, or video files. However, CDs and DVDs are incompatible, bringing different advantages and disadvantages. Therefore, the decision of which to use is left up to you. You can avoid any confusion over which disc type to use by asking yourself two simple questions:

- **What disc type is supported by my disc burner?**
- **What disc type is supported by my disc player?**

Knowing the answers to these questions goes a long way towards deciding on a disc type: after all, you want to be able to play your disc after burning it, and of course, your burner must support the disc type you want to create.

In broad terms, discs are divided into CD (which, being the earlier technology, is more widely supported) and DVD (which holds seven times the amount of content, but requires a special drive). Following is a brief description of the different disc types supported by CyberLink Power2Go.

## CD Types

CDs contain up to 74/80 minutes of high quality video or 650/700 MB of data.

**CD-R** CD-R is a once-writable format. CD-RW burners and most new DVD burners can write in CD-R, and most DVD players can also read this format. The CD-R format is commonly used for distribution of computer data and digital audio.

**CD-RW** CD-RW is a rewritable CD format. CD-RW burners and most new DVD burners can write in CD-RW, and most DVD players can also read this format. The CD-RW format is best suited for storage of computer data and digital audio.

## DVD Types

DVD is a high capacity disc that holds anywhere from 8-18 GB of data, or from roughly 2-8 hours of video (depending on the type of DVD). Using the High Quality setting, you can expect to be able to record 1-2 hours of video.)

DVDs can be played on DVD players and computers equipped with DVD drives. For more detailed information on DVD-R/RW formats, see [www.dvdrhelp.com/dvd](http://www.dvdrhelp.com/dvd) or other web sources. For more detailed information on DVD+R/RW formats, see [www.dvdrw.com](http://www.dvdrw.com) or other web sources.

**DVD-R** DVD-R is a once-writable DVD format. It is a competitor product to DVD+R, and is therefore not compatible with that format. Some new DVD burners can write in both DVD-R and DVD+R, and most DVD players can read both formats.

**DVD-RW** DVD-RW is a DVD format that can be written to about 1,000 times. It is a competitor product to DVD+RW, and is therefore not compatible with that format. Some new DVD burners can write in both DVD-RW and DVD+RW, and most DVD players can read both formats.

**DVD+R** DVD+R is a once-writable DVD format. It is a competitor product to DVD-R, and is therefore not compatible with that format. Some new DVD burners can write in both DVD-R and DVD+R, and most DVD players can read both formats.

**DVD+RW** DVD+RW is a rewritable DVD format that can be written to about 1,000 times. It is a competitor product to DVD-RW, and is therefore not compatible with that format. Some new DVD burners can write in both DVD-RW and DVD+RW, and most DVD players can read both formats.

**DVD-RAM** DVD-RAM is a DVD format that can be written/rewritten to about 100,000 times. While DVD-RAM's boasts technological advances, it is incompatible with many DVD burners and players.



# Index

## A

- Audio CD, burning 19
- audio tracks, ripping to hard disk 30
- auto-run option 11

## B

- before burning
  - configuring burning options 10
  - writing a simulation 13
- bootable
  - CD, burning 17
  - CD, options 11
  - floppy disc 11, 17
  - image file 17
- buffer underrun protection 13
- Burn Disc button 7
- Burn Disc Image icon 6
- burning
  - Audio CD 19
  - bootable data disc 17
  - configuration 10
  - data discs 15
  - disc images 27
  - movie disc 21
  - MP3 disc 20
  - multisession discs 15
  - music disc 18
  - simulation 13
  - WMA disc 20

## C

- CD
  - bootable 11
  - closing 13
  - key, location of 33
  - multisession 15
  - ripping music from 30
  - types 35
  - verifying after burning 13
  - vs. DVD 34
  - write-protecting 13
- change disc icon 11
- close disc 13
- Configuration/Information
  - button 7
  - options 10
- Copy Disc
  - button 7
  - Power2Go Express icon 3
  - Power2Go mode icon 6
  - procedure 23

## D

- Data Disc
  - burning in Power2Go Express mode 15
  - burning in Power2Go mode 16
  - configuration options 11
  - Power2Go Express icon 3
  - Power2Go mode icon 6
- date and time options 12
- disc
  - copying 23
  - name 12
- disc image
  - burning 27
  - saving 28
- disc utilities
  - Burn Disc Image 27
  - Erase Disc 29
  - Rip Audio 30
  - Save Disc Image 28

- using 26
- DVD
  - types 36
  - vs. CD 34

## E

- enable buffer underrun protection 13
- Erase Disc
  - button 7
  - icon 6
  - procedure 29
- EZProducer program 21, 22

## F

- fax support 32
- features in Power2Go 2
- floppy disc, bootable 11, 17
- full erase 29

## H

- Help button 7

## L

- listen to a track before burning 20

## M

- Make a disc bootable 11
- minimum system requirements 8
- modes
  - Power2Go 5
  - Power2Go Express 3
- Movie Disc

- burning 21
  - Power2Go Express mode 3
  - Power2Go mode icon 6
- MP3 CD, burning 20
- multisession discs 15
- music
  - ripping to hard drive 30
  - supported formats 2
- Music Disc
  - Audio CD, burning in Power2Go mode 19
  - burning in Power2Go Express mode 18
  - MP3, burning in Power2Go mode 20
  - Power2Go Express icon 3
  - Power2Go mode icon 6
  - WMA, burning in Power2Go mode 20

## N

- New Project button 7
- number of copies 13

## O

- Open Existing Project button 7

## P

- phone number, tech support 33
- Power2Go Express 3
  - burning data discs 15
  - burning movie discs 21
  - burning music discs 18
- Copy Disc icon 3
- copying discs 23
- Data Disc icon 3
- Movie Disc icon 3
- Music Disc icon 3
- Power2Go mode 5
  - burning Audio CD discs 19

- burning bootable data discs 17
- burning data discs 16
- burning movie discs 21, 22
- burning MP3 discs 20
- burning music discs 20
- burning WMA discs 20
- copying discs 23
- Power2Go Version button 7
- PowerProducer program 21, 22

## Q

- quick erase 29

## R

- Refresh button 7
- Rip Audio
  - icon 6
  - procedure 30

## S

- Save button 7
- Save Disc Image icon 6
- simulation, writing 13
- system requirements 8

## T

- technical support 32
- tracks, listening to before burning 20

## U

- utilities, using 26

## V

- verify recorded data option 13

## W

- Web sites for technical support 32
- WMA CD, burning 20
- write
  - simulation 13
  - speed 13
- write-protect a CD 13

