

---

## 2 Installation

The applicable rules of safety of electrical equipment must be observed when installing components !

No modifications are allowed to be made by the user ! Otherwise, the permission to operate the device is void !

**Note:** This equipment has been tested and found to comply with the limits for a Class B digital device, pursuant to part 15 of the FCC rules. These limits are designed to provide reasonable protection against harmful interference in a residential installation. This equipment generates, uses and can radiate radio frequency energy and, if not installed and used in accordance with the instructions, may cause harmful interference to radio communications. However, there is no guarantee that interference will not occur in a particular installation. If this equipment does cause harmful interference to radio or television reception, which can be determined by turning the equipment off and on, the user is encouraged to try to correct the interference by one or more of the following measures:

- Reorient or relocate the receiving antenna.
- Increase the separation between the equipment and receiver.
- Connect the equipment into an outlet on a circuit different from that to which the receiver is connected.
- Consult the dealer or an experienced radio/TV technician for help.

---

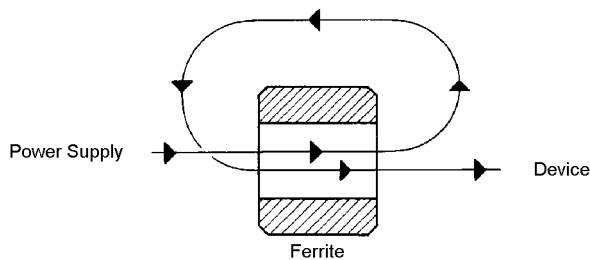
## 2.1 Power Supply

Before any device is connected to the supply voltage, it must be checked if the line voltage is corresponding with the devices requirements. See type label of the device.

Devices which are dedicated for installation in dry rooms, e.g. offices, are not allowed to be installed outdoors or in rooms where splashing water might occur. Devices which are installed in such areas are **not allowed** to be connected at 230V but must be supplied with 24V voltage.

Model Bedas 93 20 shall be installed on the load side of a class2 or class3 power source as defined by the National Electric Code (NEC), article 725-2. For proper wiring methods, refer to NEC articles 725-52,-54,-61 and 71.

For reducing of electromagnetical interferences the cable type between power supply and device must absolutely be shielded. The shielding must be connected on both sides to protective earth. In the terminal protective earth is realized via the cable clamp. Additionally the cable must be lead-in the ferrite which is delivered with the device.

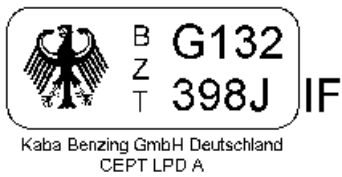


The ferrite must be installed as near as possible to the device!



conformity with directive 89/336/EWG  
and 93/68/EWG  
checked according to EN 50081-1  
and EN 50082-2

**Additionally for terminal with Legic reader:**



**Contains FCC ID: NVIWRU-100**

This device complies with Part 15 of the FCC Rules. Operation is subject to the following two conditions: (1) this device may not cause harmful interference, and (2) this device must accept any interference received, including interference that may cause undesired operation.