

Usual Manual for Driveless webcam

Content

1. Preface
2. System requirements
3. Features
4. Using instructions
5. Properties setup
6. Warranty

1. Preface

Thanks for purchasing driveless webcam. Please read this manual carefully before using the webcam, which is the best guideline offering best service.

2. System Requirement

- 1) Support Vista, XP2 or above system with free USB port
- 2) USB 2.0 port, the webcam should be connected computer through host USB port.
- 3) CPU with 700MHZ, Memory of 128M, Hard disk of 600M.
- 4) Other: Direc9.0 or above

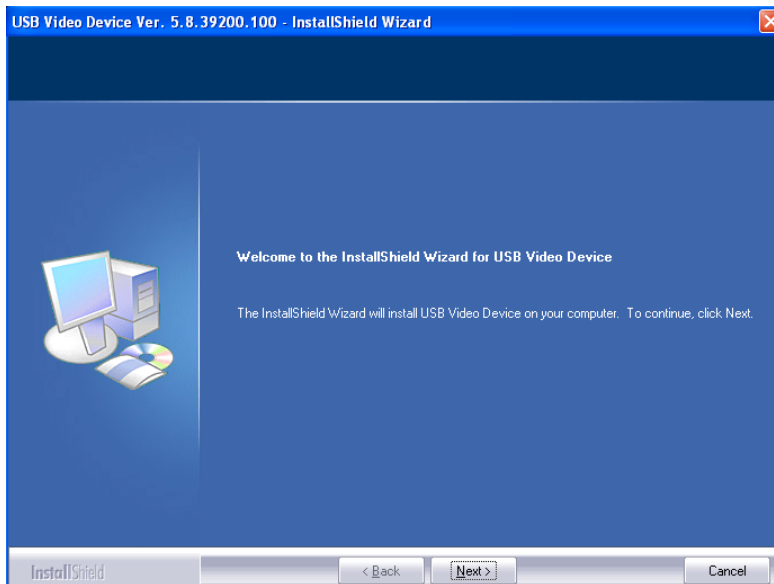
3. Features

- 1) Plug-and-play, no need to install driver.
- 2) Use the latest special sensor
- 3) 1/4 sensor, 5-layer glass optical lens, FOV 62°.
- 4) High resolution, 30 fps at CIP and VGA format
- 5) Focusing range: 3 cm to infinity
- 6) Video format: 8/16/24 BIT, CCIR601, CCIR656
- 7) TWAIN driver: support PHOTOSHOP and all kinds of video softwares
- 8) VFW interface: support dynamic and static image capture
- 9) Auto exposure control/auto gain control/auto white balance
- 10) Advanced digital picture control function, such as color saturation, contrast and gamma check
- 11) Fast compressing engine, 2-7 times compressing rate, high-speed soft decompressing with MMX
- 12) Warm hint: if encountering reject or hint by anti-virus software when you plug webcam, please undo the block. The software we offer has passed test, which would not cause any damage to the regular running of computer.

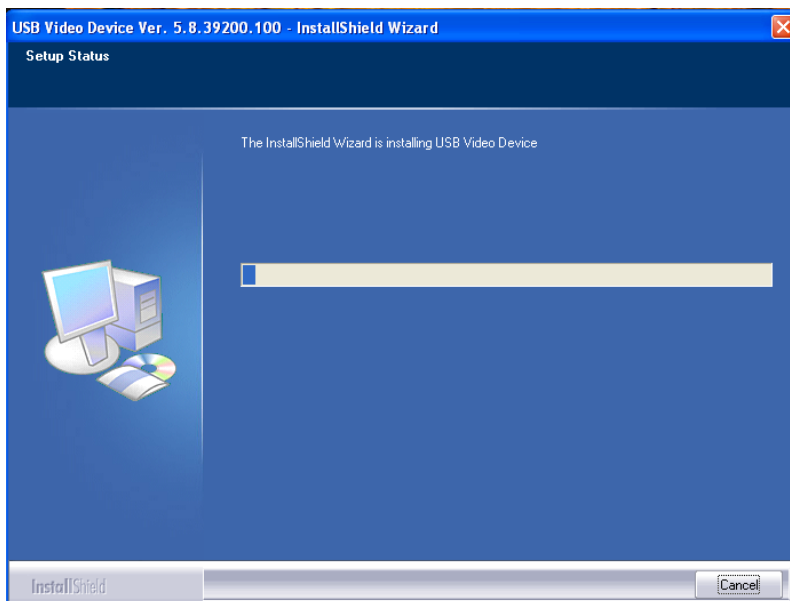
4. Using instruction

If you just want to run the webcam in the easiest way, plug-and-play is OK.
If you need more functions, please operate as the following procedures

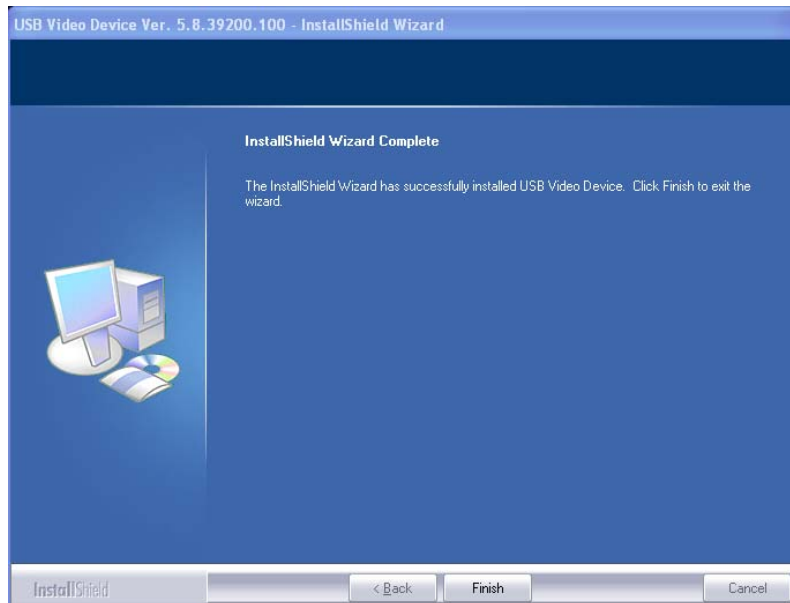
- 1) First plug the webcam and connect with computer, place the disc into CD-ROM. Please wait for a few seconds, it will run automatically. Then Figure(1) will pop up:



- 2) Click "next" in figure (2),

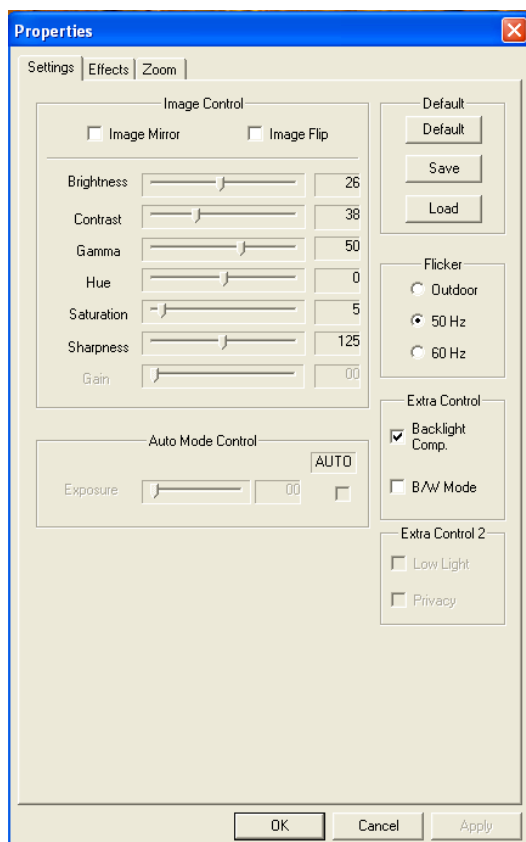


- 3) Driver installed successfully, click "Finish" in Figure (3)

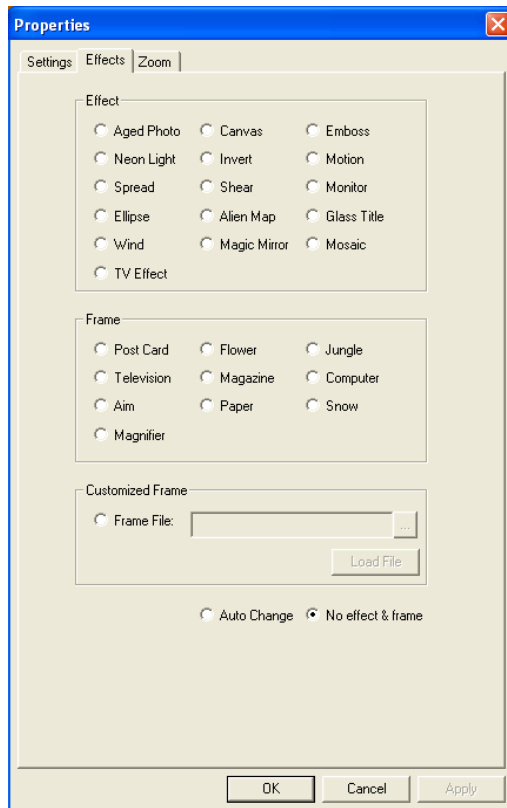


5. Properties setup

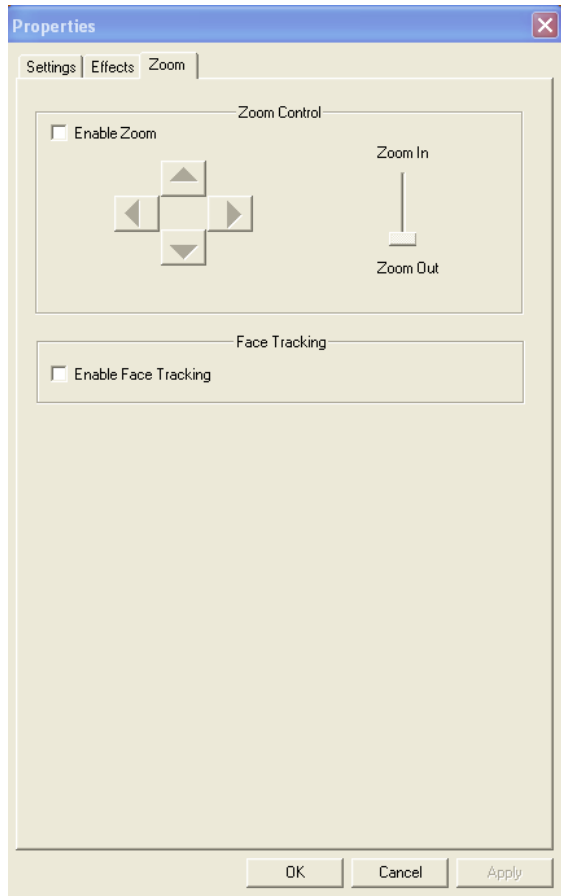
1) Control the light with the software: open AMCAP, choose Options → Video Capture Filter, Figure(4) will appear, choose the necessary items.



2) Special function: open AMCAP, choose Option → Video Capture Filter, then choose “Special Function” in the menu, Figure (5) will appear. Then you can make all kinds of special function effects.



3) Zoom、face tracking function: open AMCAP, choose Option → Video Capture Filter, then choose Zoom, Figure (6) will appear, click Open Zoom Function



6. Warranty

The warranty service will be valid in normal operation. You should use this product according to the user manual strictly. Don't break and assembly the shell by yourself. Severe distortion, scratch, color changing, damage, lens break, speck COMS sensor, burning or obvious scratch, and any PCB damage arising from undue operation are manual damage.

Please keep the valid receipt when you buying this product. Please show us the original receipt when you need help. Otherwise this warranty is invalid, and the product will be out of our warranty.

FCC WARNING

This device complies with Part 15 of the FCC Rules. Operation is subject to the following two conditions:

- (1) this device may not cause harmful interference, and
- (2) this device must accept any interference received, including interference that may cause undesired operation.

NOTE: This equipment has been tested and found to comply with the limits for a Class B digital device, pursuant to part 15 of the FCC Rules. These limits are designed to provide reasonable protection against harmful interference in a residential installation. This equipment generates, uses and can radiate radio frequency energy and, if not installed and used in accordance with the instructions, may cause harmful interference to radio communications. However, there is no guarantee that interference will not occur in a particular installation. If this equipment does cause harmful interference to radio or television reception, which can be determined by turning the equipment off and on, the user is encouraged to try to correct the interference by one or more of the following measures:

- Reorient or relocate the receiving antenna.
- Increase the separation between the equipment and receiver.
- Connect the equipment into an outlet on a circuit different from that to which the receiver is connected.
- Consult the dealer or an experienced radio/TV technician for help.

NOTE: The manufacturer is not responsible for and radio or TV interference caused by unauthorized modifications to this equipment. Such modifications could void the user's authority to operate the equipment.