


# **Interactive TouchBoard**

## **User Guide**

Thank you for purchasing this product.


 **Warning:** Please read this user guide carefully before use and keep it properly for daily reference.


## User guide

This menu is applicable to all our products of **TouchBoard**

The signs and the definitions included in this manual shall be as the follows:

 **Notice:** The extra interpretation about the software.

 **Caution:** The frequent problems produced in operation, and tell you how to resolve them.

 **Warning:** The possible body injuring may occur during the course of operation, or damage to the product caused by abnormal use.

 **Warning:**

- Do not install the interactive **TouchBoard** in the places of moisture or smog to avoid electric shock!
- Keep the interactive **TouchBoard** away from the sources of fire and electricity as well as avoid insulating for a long time!
- Please fasten the interactive **TouchBoard** firmly!

 **Warning:**

- Do not watch at the light beam directly when in use together with the projector!

 **Key Reminding:**

- Please ensure the grounding of the interactive **TouchBoard**, projector and computer.
- Please ensure the proper connection between the interactive **TouchBoard** and computer.

 **Re substances minding:**

- The interactive **TouchBoard** shall be parallel with wall if installed on it.
- Do not touch or nick the surface and the Board with sharp and hardened

# Contents

1. Overview .....	3
1.1 What is TouchBoard .....	3
1.2 There are Many Ways to Use TouchBoard.....	4
1.3 About This Menu.....	5
2. Getting Started.....	5
2.1 How does the Interactive Board Work?.....	5
2.2 Computer System Requirements .....	5
2.3 How to Install Interactive Software?.....	7
3. Using TouchBoard.....	10
3.1 Interactive Software Basics .....	10
3.2 Establishing Communication between the Board and Computer .....	11
3.3 Calibrating TouchBoard.....	11
3.4 Launch the interactive software .....	13
3.5 What is the use of soft pen? .....	13
3.6How to use multitouch?.....	13
3.7 How to search a web site? .....	16
3.8 How to Write on the Board?.....	16
3.9 How to Erase the Board? .....	16
3.10 How to Print the Board? .....	17
3.11 How to Capture a Snapshot of the Board? .....	17
4. Getting Started with Interactive Software Tool .....	17
4.1 Interactive Board Toolbar .....	17
4.2 Interactive board float bar .....	19
4.3 Drop-down Menus .....	20
4.4 How to Import Images with the Gallery?.....	21
4.5 Gesture recognition .....	
4.6 How to change or move a Backdrop?.....	
4.7 How to Create a New File? .....	22
4.8 How to Save a File?.....	23
4.9 How to Open a File?.....	23
4.10 How to Record the Screen? .....	23

4.11 How to Use Camera? .....	23
4.12 How to Use Textured Pen? .....	23
4.13 How to play the video and flash? .....	24
4.14 How to Use the Searchlight and Reveal Tools? .....	26
4.15 How to Annotate the Screen.....	28
4.16 How to Copy, Paste, Undo, Redo? .....	28
4.17 How to user intert text.....	29
5. FAQ.....	30
6. Technology Parameter .....	30
7. Remark .....	30

## 1. Overview

Welcome to Interactive software for operating interactive **TouchBoards**

### 1.1 What is TouchBoard ?

As a new generation's products, the interactive electronic **TouchBoard** adopts infrared matrix scan induce technology and use together with the computer and projector, write by finger or pen directly, control the computer on it as well as real time printing and share online. It can perform an advanced demonstration for modern teaching, training, multimedia conference, coordination and local demonstration. Moreover, the operation is very easy; the graphic menu is more convenient and simple for the operator.

Interactive Board is an interactive electronic **TouchBoard** connected with your computer that enables you to capture a snapshot of anything you write or draw on your Board. Interactive software records all **TouchBoard** activity for you to save, use in other applications, print, or distribute.

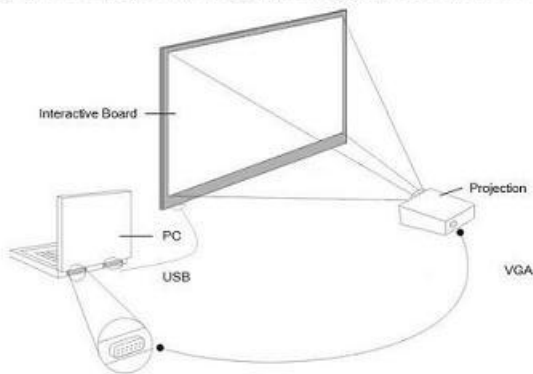
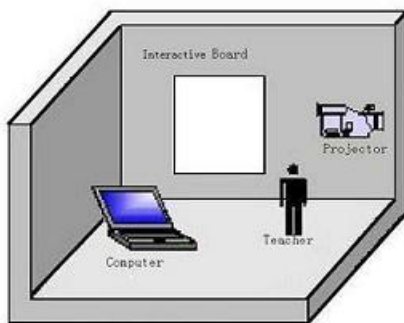


Chart of Working Principle

### 1.2 There are Many Ways to Use TouchBoard

Using Interactive software during a presentation or meeting to capture notes and ideas. You can remain at the interactive **TouchBoard** ; it gives you the tools you need to write, erase, print, or capture a copy of the Board. The most basic way to use Interactive **TouchBoard** is that you can write on the surface of the Board with any non-transparent objects during your meeting using a projector that is also connected to the computer. In addition, the Interactive software records what you write or draw, so you

can capture a snapshot of your interactive touchboard notes on the connected computer. This enables you to add or erase, save, print, or distribute the snapshot using the features of the Interactive software at any time, even when a touchboard is not turned on connected to the computer. If you connect a projector to your computer, the interactive touchboard becomes a giant, interactive touch screen that enables you to operate your computer while standing by the interactive touchboard. For instance, you can control a presentation (using software such as PowerPoint) on your computer while standing by the interactive touchboard simply by using a finger or stylus as the mouse.



### 1.3 About This Menu

This manual describes how to operate interactive Touch Board using Interactive software. This manual also describes installation of software and hardware for Touch Board .

## 2. Getting Started

### 2.1 How does the Interactive Board Work?

The Interactive Board is very easy to use. It's equal to your keyboard or your mouse. That's to say you can control your computer by operating interactive touchboard.

## **2.2 Computer System Requirements**

### **2.2.1 Minimum Requirements:**

- PC with 300MHz x 86 processor
- 128M EMS memory
- Display card support 256 colors and above
- 10M applicable hard disk space
- Display resolution : 1024x768, 1280x800, 1280x1024
- An available USB port
- CD-ROM drive

### **2.2.2 Windows**

- Windows compatible PC (Pentium II or faster required; Pentium III recommended)
- Windows 98, 2000, XP, VISTA,7 or server series

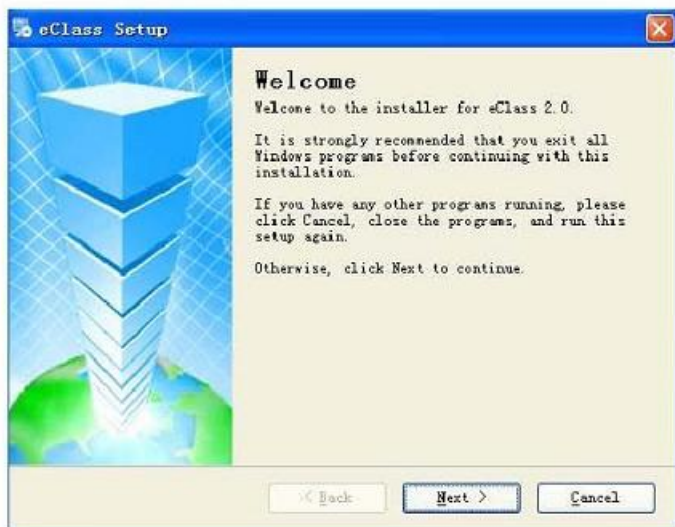
### **2.2.3 Configuration Recommended:**

- PC with 1GHz x86 processor
- 256M EMS memory or above
- Display card support 256 colors and above
- 500M applicable hard disk space
- Projection display resolution: 1280x800
- USB port

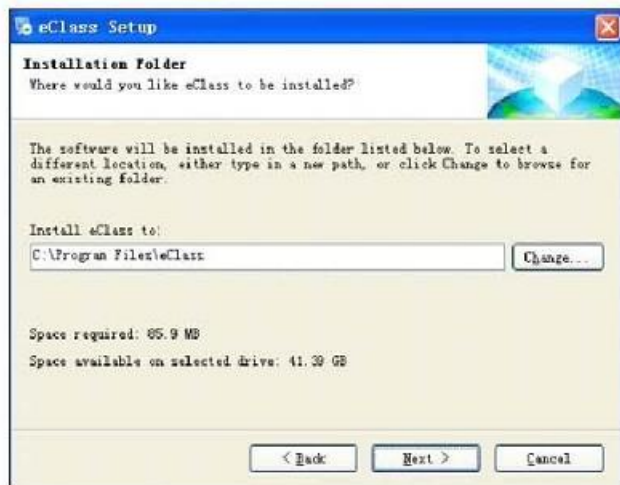


## 2.3 How to Install Interactive Software?

2.3.1 Double click "eClasssetup.exe" and it displays as follows:



2.3.2 Click "Next" and it displays as follows:

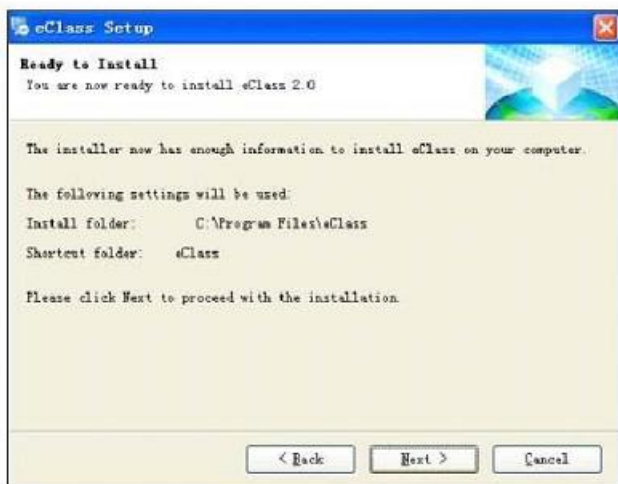




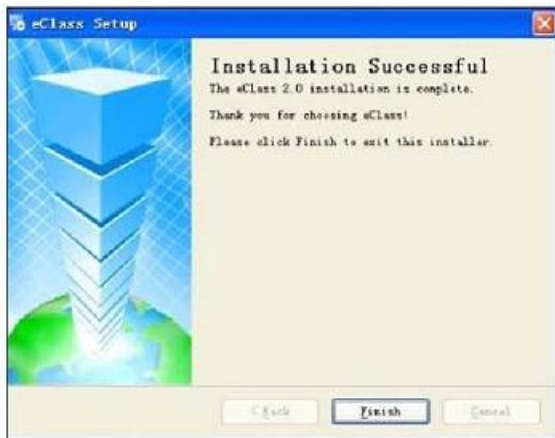
### 2.3.3 Click "Next" and it displays as follows:



### 2.3.4 Click "Next" and it displays as follows:



2.3.5 Click "Next" and it displays as follows:



2.3.6 Connect the IWB USB cable to PC



2.3.7 After service Program is connected,  will display on the right-down corner of PC. Right-click "eServer" icon and choose "locate"



2.3.8 User finger or pen to touch following four crosses



Please Click point{0}

**2.3.9** After locate the four crosses,start software"eTouch"by double-dick it or just put your palm on the IWB.

The installation finished.

### 3. Using Touch Board

#### 3.1 Interactive Software Basics

##### 3.1.1 Performances:

**Hand-Gesture Recognition:** Single finger, several fingers and support multi-touch and multi-writing.

**Write:** Dual users writing by finger,pen or ink marker.

**Touch:** At working status, the interactive touchboard is a high preciseness stuff. The finger or ferula can substitute mouse and click or drag conveniently to achieve various operations.

**Postil:** The postil and document demonstration can be operated directly, such as PPT, AVI, MEPEG, JPEG and etc.

**Energy saving:** Consumption less than 0.5W and no separate power supplier needed.

**Individualized setup:** Background, paintbrush text inserting, default screen can be setup at individual preference,

##### 3.1.2 Working Environment

The product shall be operated as the following requirements to avoid accidental failure:

Item	Application	Remarks
Storage & conveying temp.	-40℃ - 40℃	
Storage & conveying humidity	20% - 93% ( 40℃ )	
Barometric	86 k/Pa – 106 k/Pa	
Working humidity	20% - 93%	
Working temp.	-5℃ - 60℃	

Notice: The product shall be deposited in ventilation and dry places to avoid the damage caused by damp, dust, food, liquid or insulating.

### 3.2 Establishing Communication between the Board and Computer

Interactive Board automatically detects the USB port connected to the computer. However, in some circumstances you may need to identify the port manually (for example, if you add, move, or remove a serial device such as a modem, laptop, PDA or input device).


To establish communication between the Board and the computer:

1. Make sure the Touch-Board is plugged in with USB cable, and properly connected to your computer.
2. Choose “eServer.exe” from PC desk. The software locates and displays the port connection with the Board.

3. Double-click icon  to establish the communication with all Boards connected to your computer and wait while the status changes.

4. When communication is established, Right-click icon , which is on the right bottom of toolbar of PC desk to close the window.

### 3.3 Calibrating Touch Board

The taskbar at the right corner of the Board bottom will display icon  when the application installed,

click the right key at the place of ; dap out the following operating guide:



◆ Locate

Click “locate”, the Board will display:



Click on red dot

by pen or finger to calibrate the position precisely.



Notice:

(1) The calibration shall be necessary before interactive touchboard or other hardware used in the first time.

(2) Re-calibration is available for the preciseness in further use.


◆ Exit


Single click “exit” when the Touch-Board is no longer for use or open service application and activate the Touch-Board for reuse.



Notice:

The following icon will appear when disconnect the interactive touchboard during the operation

(1)  express connection interrupted between the touchboard and the computer;

(2)  express the connection between the touchboard and the computer is connected.

### 3.4 Launch the interactive software

After the calibration we can launch the interactive software by double click the software or just put our palm on the board for several seconds. And then the software is started.

### 3.5 How to use double writing?

On any area of the touchboard as long as you use 2 pens, you can write by two pens at the same time.

### 3.6 How to use multi-touch and Gesture recognition?

#### I . Zooming

It is divided into two kinds of operating methods

##### 1. Zooming at horizontal direction

Two fingers stay on the object horizontally as the following picture, the distance at the vertical direction is less than 10cm.



##### 2. Zooming at vertical direction

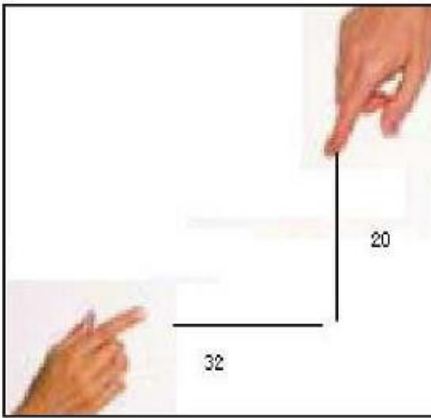
Two fingers stay on the object vertically as the following picture, the distance at the horizontal direction is less than 16cm.



## II. Rotation

It is divided into two parts.

1. Two fingers stay on the object by the diagonal way. The distance on the horizontal direction is less than 16cm, at the same time, on the vertical direction is more than 10cm. Therefore, it is distinguished to be the status of rotation.
2. After being distinguished to rotate, it needs to be distinguished to the center point for rotation. (Recently, it only supports rotation based in the bottom left or right corner ).For example, as in the bottom left corner: one finger holds on the bottom left corner, while the other finger moves on the board on the clockwise direction by diagonal way.



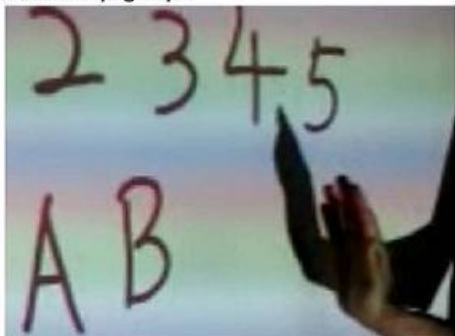
## III. Gesture recognition

1. Eraser writing by fist: when your fist stops on board for about 1.5 seconds, you see this green mark; it can work as eraser.





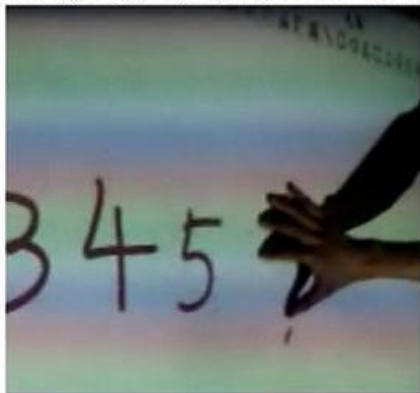
2. Turn page by hand-waving ,you should wave by touching board at horizon level and a little fast, then can page-down and page-up .



3. Start software by palm, after your locate the touchboard , then you put your palm on the board for about 1 second, the eTouch software for drawing will open



4. Move writing on page by fingers (dual-user board, please use more than 3 fingers for this)



### 3.7 How to search a web site?

We can visit web sites via choosing . Input the web site you want to visit and press "go" you will come to the web site.

### 3.8 How to Write on the Board?

The Touch-Board sends writing data to your computer by detecting a single point or dual points of touching or of reflected light. Choose a pen (Intelligent pens on the pen tray) or pointer or your finger, even all kinds of non-transparent objects. Select a pen color on the Touch-Board icon strip. Interactive Software records your writing in the color you choose.



Notice:

1. Make sure the Touch-Board is connected with PC, if necessary.
2. Once the computer connected with the Touch-Board, start the Interactive Software application. If the Interactive software is not installed on the computer, or if the software does not automatically detect the Touch-Board, refer to "How to install Interactive Software" on page 7-10.
3. Choose a pen.
4. Write or draw on the Board. Your work appears in the Interactive software window.

### 3.9 How to Erase the Board?

Erasing functions are based on a calculated circle around a single point. Always use the erasers that are provided with your Touch-Board. Erasing depends upon which model you use.

#### 3.9.1 Point Eraser

To erase just a dot, choose an Dot eraser tool on the Touch-Board icon strip with pen or your fingers and erase your wanted dot.

#### 3.9.2 Object Eraser

To erase a particular content, such as one line or other, choose an object eraser tool on the interactive touchboard icon strip with pen or your fingers and erase you wanted zone.


#### 3.9.3 Using fist to erase the IWB

Users can erase the contents on the IWB with fist.

### 3.10 How to Print the Board?

You can print an image or any contents of the Board at any time using a printer that is connected to the computer. Choose "Print(P)" under "File" menu to print the contents of the Board.

### 3.11 How to Capture a Snapshot of the Board?

The Interactive software records all the activity on the interactive touchboard. To capture a snapshot image of the current Board so that you can save or use on the computer. The Interactive software captures an image of the current Board and adds it to the Interactive file that is open. To capture a copy of the Board in the software, tap the Snapshot icon . You can continue writing on the Board, or erase and continue.













## 4. Getting Started with Interactive Software Tool

### 4.1 Interactive Board Toolbar

The Interactive software toolbar gives you access to a number of tools to help you work with your Touch-Board.



#### Functions of each icon on the toolbar

 Hard pen	Click the button to have a hard pen	 Soft pen	Click the button to have a soft pen
 Textured pen	Click the button to have the textured Pen	 Translucent pen	Click the button to have a Translucent
 Laser pen	Click the button to have the laser pen	 Brush	Click the button to have a array pen
 New white page	Clicking this button, it will display the white page on the screen.	 New blue page	Clicking this button, it will display the blue page on the screen.
 New black page	Clicking this button, it will display the black page on the screen.	 New background page	Clicking this button, it will display the background page on the screen.
 New screen page	Clicking this button, it will	 Clear page	Click the button to eliminate

	display the screen page on the screen.		the contents of the current page
 Prev page	Click the button to the front page	 Next page	Click the button to the next page
 Delete page	Click the button to eliminate the current page	 Play flash	Clicking it, you can play a flash in your computer.
 Play video	Clicking it, you can play a media in your computer.	 Screen curtain	You can shield the IWB contents as you wish by dragging the curtain
 Spotlight	Clicking it, you can have a spotlifter in your screen	 Clock	Click the button to have a clock
 Random numbers	It is for game	 Screen snapshot	You can capture the object you want with it
 Ruler	Click the button to have a ruler	 Traingle	Click the button to have a traingle
 Protractor	Click the button to have a protractor	 Compasses	Click the button to have a compasses
 Fill	Click the button to color the object	 Erase a region	Eraser to erase one region
 Erase a dot	Eraser to erase one dot	 Copy	Click the button to copy object
 Cut	Click the button to cut object inthe current page	 Paste	Click the button to paste object
	Click the button to have the textured Pen	 Line	Click the button to draw line
 Circle	Click the button to draw a circle	 Ellipse	Click the button to draw a ellipse
 Triangle	Click the button to draw a triangle	 Rectangle	Click the button to draw a rectangle
 Trapezium	Click the button to draw a trapezium	 Rhombus	Click the button to draw a Rhombus
 Pentagon	Click the button to draw a pentagon	 Five-pointed star	Click the button to draw a five-pointed star
 Hexagon	Click the button to draw a hexagon	 Six-pointed star	Click the button to draw a six-pointed star

## 4.2 Interactive board float bar









There are two tabs on the left and right-hand side of the Interactive Software interface. Press the icon

on the left-hand side of interface  and , floating tool will display.

### The float bar on the right tab:



### Functions of partial icon on the float bar

 Move drawings	Click the button and then the page of the IWB can be moved as you wish	 Insert image	Click the button to insert any photo into the IWB
 Zoom in	Click the button and then click it in the page, the objects in the page can be zoomed in as you wish	 Zoom out	Click the button and then click it in the page, the objects in the page can be zoomed out as you wish
 Transparent page		 Minimized and return to Windows	Click the button you can change the interface between the board page and windows desk
 Insert Text	Click the button to insert a text as you wish	 Select objects	Click the button to choose the objects you want



### 4.3 Drop-down Menus

Interactive software menus provide access to many of the same tools and features found on the interactive software toolbar, floatbar, as well as some tools that aren't. Select the drop-down menus on the toolbar present you with several options.

#### 1. File Menu

New(N)	In the current page, you can click this button to create a new one.
Open	You can click this button to open a file in your computer.
Save(S)	You can save your current active performance on the Board to your computer.
Save as...(A)	You can save your performance on the board to your computer as different formats of photo
Export(E)	You can save your current active performance on the board to your computer in different format such as DOC,PPT,PDF
Print(P)	You can print your performance on the board
Exit(X)	Click the button to exit when you don't want to use the software.

#### 2. View Menu

Click the buttons to have the PageIndex and Resource Lib appeared or hidden.

#### 3. Page sorters Menu

Users can choose many kinds of page as they like.

#### 4. Pen Sorters Menu

Users can choose many kinds of pen as they like.


#### 5. Operation Menu

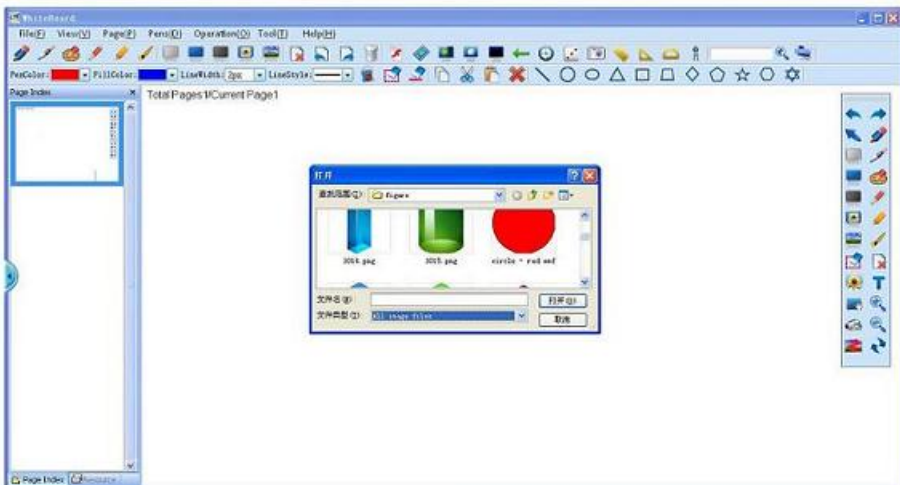
Undo	Redo	Select	Select all
Delete selected	Copy	Cut	Paste
Object erase	Point erase	Insert image	Insert text

## 6. Tool Sorters Menu

Play flash	Play video	Screen curtain	Spotlight
Screen hush	Screen arrow	Screen snapshot	Clock
Random number	Ruler	Set square	Protractor

## 4.4 How to Import Images with the Gallery?


Inserting a picture from a file in your computer or gallery in the Interactive software by selecting icon  on the floating bar or choose "Insert image" in the "Operation menu", and use the dialog box as the following picture to find and insert your picture.





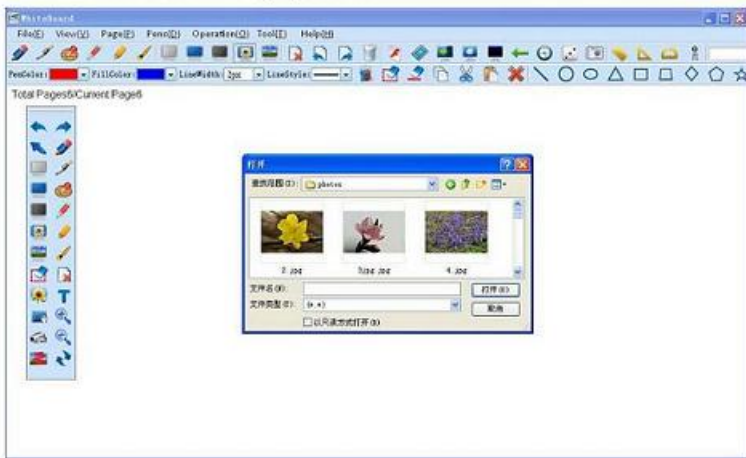
## 4.5 How to Change or Move a Backdrop?

### 4.5.1 To Move a Backdrop

Click the icon  on the tool bar and you can move the current backdrop. It is convenient for you to write more contents on the screen when the backdrop is filled with the contents. And the former contents moved are not seen but are still existent. You can use it again by moving the backdrop. Besides we can also move the backdrop by two fingers.

### 4.5.2 To add a Backdrop

Click the icon  on the tool bar it will display as follows



Choose one picture and open it. Press "Open". Background page is done.

## 4.6 How to Create a New File?

Before you decide to create a new file in the file menu (click the "New" in the File menu), you have a dialog box about attention to select 'yes' or 'No' or 'cancel'. After you select, you can create a new file.


#### 4.7 How to Save a File?

You can save all your workings in the current page by clicking "Save" in the file menu as ty format..You can also click "Save as" on the tool bar or the file menu to save it as .twd/ .bmp/.gif/ .jpg/ .png/ .tiff/ .pdf formats.

#### 4.8 How to Open a File?

In the current page, if you want to insert a file, you can click "Open" from the file menu or tool bar. It will display a dialogue box in you computer .You can insert any pictures from the folder of your computer to the page. You only can open the file whose format is twd.

#### 4.9 How to Record the Screen?

The recorder is very useful for teachers to reuse the courses after giving a live class. Click icon  on the floatbar and it displays



in the screen. Click



to start record, click




to save it and click




to play the recorded contents.

#### 4.10 How to Use Camera?

When the Board is in the status of computer, there are many information from all sources, such as website and other else, but how to insert these information to the Board?

You need to consider the Camera. You can click  on the tool bar or on the tool menu. And the Board transfers to the desktop or other interfaces. You can select an object you would like to the Board. And the inserted object can be moved and zoomed out or in.

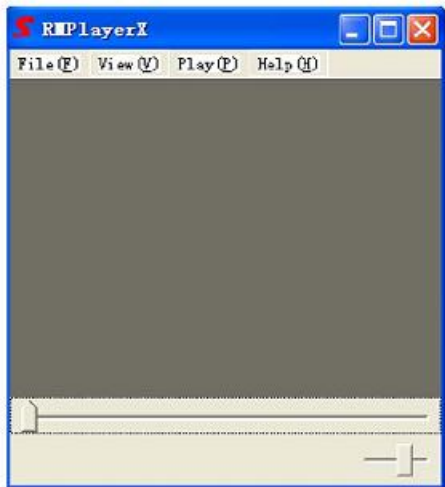
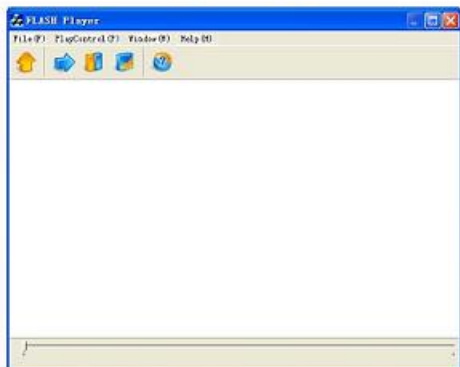
#### 4.11 How to Use Textured Pen?

The Textured pen is very interesting. You need to click icon  on the toolbar, then it displays a dialogue box. You need to select a file in this box. Then you are drawing on the screen till the Board displays the content of file.

## 4.12 How to play the video and flash?

Multimedia menu are available on the toolbar and tool menu. It contains Flash, video files. Objects from this folder are used to add rich media content to a lesson or presentation. Additional files and pages can be found in the computer files and Pages and the Lesson Activities sections of the gallery.


Click the button  or  it will display as follows



Choose the file you want to insert, it is ok.

## 4.14 How to Use the Searchlight and Reveal Tools?


### 4.14.1 Searchlight

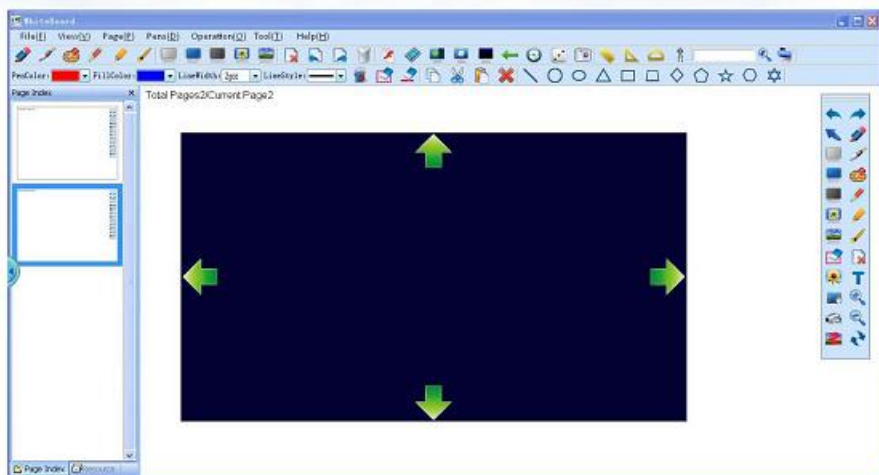
The searchlight helps focus students' attention on a specific part of your screen. You can click  on the tool bar, floating bar and tool menu and then it displays as follows




Move the Spotlight by pressing anywhere in the light area of the Spotlight and dragging the Spotlight to the area of the screen where you want your audience to focus. Right-click in the screen, then you can choose several kinds of shapes of the spotlight, and you can click it to close it.

### 4.14.2 Reveal Tools





Click the icon  on the floating bar or tool menu to cover your screen, then gradually reveal information to your audience or class with the Screen Shade. Press and hold a screen shade, then drag it in the direction from which you would like to reveal the information.



#### 4.15 How to Annotate the Screen

Click the icon , you can write on the screen either on the laptop desk status or on the status of the current Board. Even you can edit the laptop desk and open any file on the desk. In a word, any performance can be available.

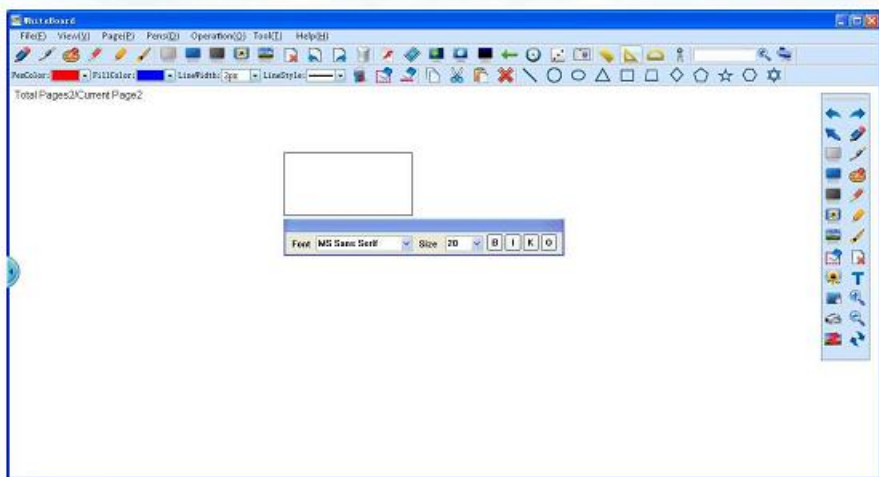
#### 4.16 How to Copy, Paste, Undo, Redo?

Click the icon , choose the object you want to paste and then click . Next, click . At last click the location you want to paste. You can copy one objection in the current page to the other new page. If you don't want some contents, you can click Undo . Inverse, click Redo .

#### 4.17 How to use insert text

##### 4.17.1 How to use virtual keyboard

Choose "Insert text" in the Operation menu and then draw a frame on the IWB it will display as follows:



Click **K** and then it will display as follows:



You can type what you want in the frame.

#### 4.17.2 How to use Handwriting recognition

Close the soft keyboard and then press **O** on the soft keyboard the keyboard will be closed and ORC is coming up.




## 5. FAQ

### (1) Why my writing stroke is unable to be displayed on screen?

- Please try to select the pen with different color with the background.
- Please remove the other article away than the hand from the screen when in writing.
- Please run software **touchboard**.

### (2) Why the icon displayed in the taskbar at the right corner of the screen bottom?

- Please confirm the interactive **touchboard** and computer as well as other components is connected properly.
- Please confirm whether the driver is installed already.
- Abnormal situation during installation, please start the computer for re-installation,
- USB ports connecting between the interactive **touchboard** and computer are improper.
- Please install writing software and application to display the icon  in the taskbar at the right corner of the screen bottom.

### (3) Is the calibration needed when the application re-installed?

No. The system has recorded the calibration parameter you setup last time.

### (4) Is the content covered which is mantled by the indices page?

No. The content is just shielded by the indices page temporarily.

### (5) How to know the working status of the interactive touchboard ?

The indicator with blue color lights when in writing, which shows the normal working status.



**(6) Why the background color of the teaching page is unable to be displayed sometimes?**

The color will be covered by the picture when the picture is not transparent and its size greater than the screen resolution.

**(7) Why the trapezoid is displayed when the projector in use? How to calibrate?**

- When the projector is not in a horizontal position, the trapezoid may appear on the screen.
- This anamorphic image shall be calibrated.
- In general, some anamorphic image can be calibrated by the remote controller of the projector, another is needed to adjust its horizontal level, please refer the operating manual of your project for details.

**(8) What kind of the projector is suitable for interactive electronic interactive touchboard ?**

- Positive projector;
- Match up the resolution of the computer;
- The minimum power  $\geq 500$  lumen and suitable for room space.

**(9) How to clean the surface of the interactive touchboard ?**

Wipe out the dirt on the surface of the interactive touchboard with clean wet cloth.

Note: Please tweak up the water from the wet cloth, it is prohibited to leak water into the Board.

## 6. Technology Parameter

Parameters			
Basic Data		Accessories	
Touch	Multi-touch and Multi-writing	Pen and pointer	Yes
Operating System	All Windows OS	TACTEASY Software CD	Yes
Induction Type	infrared	USB Cable	Yes
Writing Type	finger or pen	User Guide Manual	Yes
Positioning Accuracy	≤ 0.2mm	Wall Mount Brackets	Yes
Touch Preciseness	8192*8192	stand	optional
Cursor Speed	≥125dots/second	Hardware Features	
Transferring Rate	12m/s	Device driver version	DL-USB
Scanning Rate	first point 25m/s consecutive points 8ms	Scanning form	Auto start, always scanning
Consumption Current	≤ 100mA	Version	Latest available
Stand USB Length	6m	Data Port	USB /wireless RF2.4G/RS232
Working Environment	Direct under the sunlight		
Dimensions			
Model	Scale	Outline Area (mm)	Touch Area (mm)
TE-60	4:3	1366*1038	1230*902
TE-72	4:3	1612*1058	1476*1066
TE-72W	16:9	1776*1038	1640*902
TE-78	4:3	1776*1366	1640*1230
TE-78W	16:9	1858*1120	1722*984
TE-88	4:3	1940*1530	1804*1394
TE-88W	16:9	2104*1284	1968*1148
TE-108W	16:9	2514*1530	2378*1394

## **FCC Warning**

Note: This equipment has been tested and found to comply with the limits for a Class B digital device, pursuant to part 15 of the FCC Rules. These limits are designed to provide reasonable protection against harmful interference in a residential installation. This equipment generates, uses and can radiate radio frequency energy and, if not installed and used in accordance with the instructions, may cause harmful interference to radio communications. However, there is no guarantee that interference will not occur in a particular installation. If this equipment does cause harmful interference to radio or television reception, which can be determined by turning the equipment off and on, the user is encouraged to try to correct the interference by one or more of the following measures:

- Reorient or relocate the receiving antenna.
- Increase the separation between the equipment and receiver.
- Connect the equipment into an outlet on a circuit different from that to which the receiver is connected.
- Consult the dealer or an experienced radio/TV technician for help.

This device complies with part 15 of the FCC Rules. Operation is subject to the following two conditions: (1) This device may not cause harmful interference, and (2) this device must accept any interference received, including interference that may cause undesired operation.

Any Changes or modifications not expressly approved by the party responsible for compliance could void the user's authority to operate the equipment.

This Class B digital apparatus complies with Canadian ICES-003.

Cet appareil numérique de la classe B est conforme à la norme NMB-003 du Canada.