

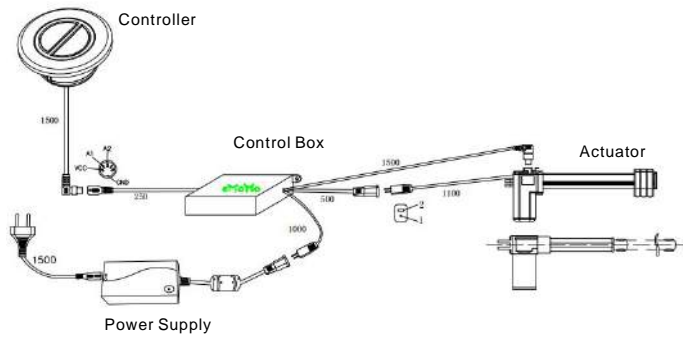
# iCtrl

Memorize Your Comfort



## Application

iCtrl is an App on your cellphone which is used to control the opening/closing of sofa. And you also can use iCtrl system to pinpoint the most comfortable position in which you found and saved previously.



## Constitution:

iCtrl system is combined by: 1. Controller; 2. Control Box; 3. Actuator; 4. Power Supply

1. Controller: Use to control the chair open or close.
2. Control Box: Use to transform the signal from controller or smart device to the actuator.
3. Actuator: Make the chair open or close by extend or reducing.
4. Power Supply: To support the power for whole system.






## An Introduction to iCtrl

iCtrl system is designed to improve the quality of life of our customers. If you have any opinions or suggestions about our products, please kindly log in [www.iCtrl.hk](http://www.iCtrl.hk) to send your feedback. You may refer to the latest information published on our website.

## Product compatibility

Demand for smart device:

- a)  iPhone 4s; iPhone 5; iPhone 5S; iPhone 5C;  
 iPod touch 5;  
 iPad 3; iPad 4; iPad Mini; iPad Air
- b) Android 2.2.3 or higher version

## Quick Start Guide

Carefully read all instructions before use, so that you can use this product correctly. Please keep this quick start guide for future reference.

## Step 1: Download App

Searching iCtrl in Apple store or Google play or visit [www.ictrl.hk](http://www.ictrl.hk).




1

## Step 2: Turn on the Bluetooth

Android device & iOS device:  
Enter Settings and turn on Bluetooth.



## Step 3: Operating the App

Tap the icon  to select devices and operate.

2

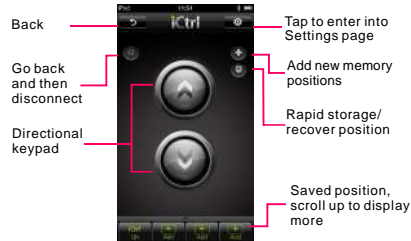


The 6 devices recently connected will be shown here

The nearby devices available for connection will be shown here

## Control

Once the device is connected, the app will enter the next screen.



Back

Go back and then disconnect

Directional keypad

Tap to enter into Settings page

Add new memory positions

Rapid storage/recover position

Saved position, scroll up to display more

3

## Memory

Storage can be started after adding a position.



Identify / Name a new memory position

## Personalize

You may name the device and positions enter into Settings and edit your preferences.



4

**FAQ**

- I. Unable to connect the device:
  - A. If you cannot connect the device after the first installation, please restart the handheld device.
  - B. iCtrl disconnects during operation and is unable to reconnect.
    - 1. Check whether the device is connected with other handheld devices.
    - 2. Restart iCtrl software.
    - 3. Restart Bluetooth (Turn off Bluetooth and wait for 10 seconds until restart).
    - 4. Restart the device.
    - 5. Restart the handheld device.
- II. Memory position errors:
  - A. If power supply is cut off while the device is operating, there will be an error in memory positioning.
  - B. The device works too frequently. When it returns to "memory position", the position appears as an error.

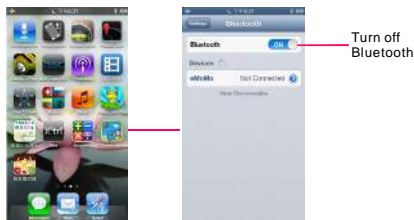
**Solution:** Tap and hold the "Down" button in iCtrl App until movement stops, and then the error will be resolved.



Press this button to get the device back to its initial position

Create a new position

- C. No memory position function is available:
  - While turning on the "Memory position", the device will stop running after working for some time without returning to "Memory position".
  - Solution:** Please check whether "Device control box" and "Actuator / motor" are properly connected (It is suggested to be done by professionals.).
- III. Sudden power failure:
  - When power supply is cut off under proper connection of the handheld terminal and device, it is necessary to go through the following operation for reconnecting:
    - A: Turn off "iCtrl" software completely.
    - B: Select "Phone – Settings – Bluetooth – Off".



Turn off Bluetooth

C: Wait 10 seconds, then restart the device and "iCtrl" software.



Restart iCtrl

Then it will resume normal operation.

- IV. If the APP prompts a notice of a "weak signal"
  - 1. Move closer to the device if the distance is more than 5 meters (16 ft.).
  - 2. There is metal obstructions between handheld intelligent terminal and device.



**Specifications**

Power input	100V~240V
Power output	29V $\overline{\text{---}}$ 2A
Rated power	58W
Bluetooth version	3.0

FCC STATEMENT

1. This device complies with Part 15 of the FCC Rules. Operation is subject to the following two conditions:  
(1) This device may not cause harmful interference.  
(2) This device must accept any interference received, including interference that may cause undesired operation.
2. Changes or modifications not expressly approved by the party responsible for compliance could void the user's authority to operate the equipment.

NOTE: This equipment has been tested and found to comply with the limits for a Class B digital device, pursuant to Part 15 of the FCC Rules. These limits are designed to provide reasonable protection against harmful interference in a residential installation.

This equipment generates uses and can radiate radio frequency energy and, if not installed and used in accordance with the instructions, may cause harmful interference to radio communications. However, there is no guarantee that interference will not occur in a particular installation. If this equipment does cause harmful interference to radio or television reception, which can be determined by turning the equipment off and on, the user is encouraged to try to correct the interference by one or more of the following measures:

Reorient or relocate the receiving antenna.

Increase the separation between the equipment and receiver.

Connect the equipment into an outlet on a circuit different from that to which the receiver is connected.

Consult the dealer or an experienced radio/TV technician for help.

**\*RF warning for Mobile device:\***

This equipment complies with FCC radiation exposure limits set forth for an uncontrolled environment. This equipment should be installed and operated with minimum distance 20cm between the radiator & your body.\*

User manual in the Languages listed below are available by visiting  
[www.iCtrl.hk/download](http://www.iCtrl.hk/download)



中文



English



Français



Italiano



Français



Русский



日本語



Español

App Download QR Code

iPhone



iPad



Android



eMoMo 一么么科技有限公司  
EMOMO TECHNOLOGY CO.,LTD

