

Wi2Wi, Inc. Confidential

W2SW0001 (Marvell 88W8686) Development Kit Quick Start Guide, Revision 1.0, June 7, 2007

1. Hardware and Software Requirements:

- Notebook or Desktop with SDIO slot for WLAN.
 - Toshiba Satellite and IBM Thinkpad X40/X41, Dell Inspiron have been tested.
- Windows XP with installation of service pack 2.
- Wireless network for WLAN connectivity.

2. Directory Structure in the CD provided with the kit:

- Hotfix921413: HB921413-v4.exe
- WLAN Driver: Contains WLAN driver files
- W2SW0001_QuickStart_Guide_Rev1.0.pdf: Quick start guide for starting the kit.

3. Software Setup:

- Most notebooks with SD slot which only support 1-bit SD mode, HotfixKB 921413 will update SD slot into 4-bit mode which is work mode of W2CBW003
 - run HB921413-v4.exe under directory Hotfix921413
<http://support.microsoft.com/kb/921413>.
- Plug in SDIO connector in the notebook or desktop.
 - Follow the pop-up windows (see Figure#1 and Figure #2) and complete the installation of WLAN driver present under "WLAN Driver" directory.
- Connect to the wireless network.



Figure #1: WLAN Driver Installation Window #1

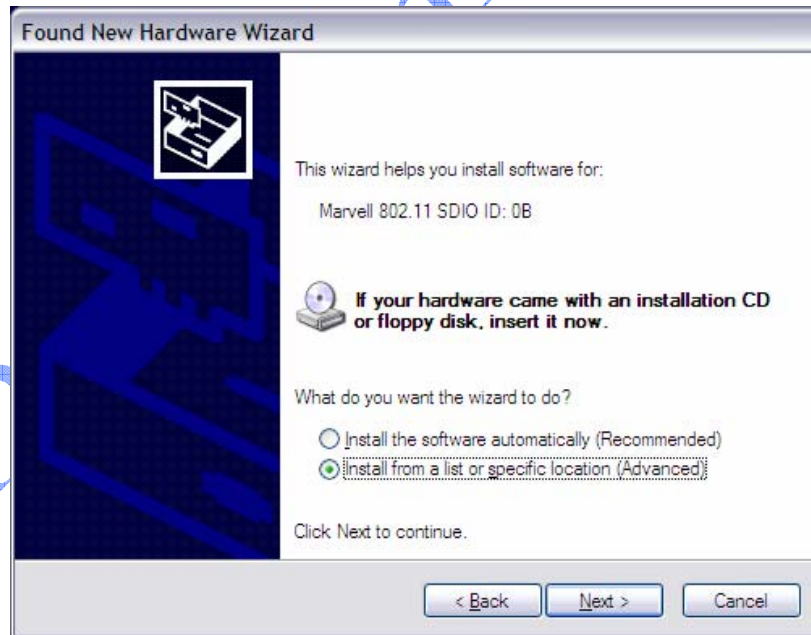


Figure #2: WLAN Driver Installation Window #2