

The Giotek logo consists of a stylized red flame icon above the word "giotek" in a lowercase, sans-serif font.

MODEL G320

Copyright © 2007, 2008, 2009 GBB Group. All Rights Reserved. Giotek™ and the Giotek Logo are trademarks of GBB Group Ltd. PlayStation is a registered trademark of Sony Digital Entertainment. This product is not endorsed or manufactured by Sony Digital Entertainment. Playstation®, Playstation 3® & PS3® are registered trademarks of Sony Computer Entertainment Inc. All other third party products and company names mentioned are either the trade names or trademarks of their respective owner.

EX-01 BLUETOOTH™ HEADSET FOR PS3™

EXCLUSIVELY DESIGNED FOR GAMING ON PS3™

thankyou

Thank you for purchasing the EX-01 Bluetooth™ Headset from Gioteck. We hope that this product will go beyond your expectations for a quality made accessory. Please read this booklet thoroughly before using the product and review the PS3 manual for additional details regarding PS3 operation. Thank you & enjoy!

precautions

- Use only as intended.
- This is a precision product and should be handled with care.
- To avoid electrical shock, do not take the product apart.
- Do not store in areas of extreme heat or cold.
- Do not allow product to get wet or dirty; doing so may damage the product.
- Do not clean with benzene, paint thinner, acetone, alcohol, or other such solvents.

warnings



This symbol indicates important installation, operation or maintenance instructions. Always follow these instructions closely.



This symbol is intended to alert the user to the presence of potentially harmful or dangerous substances within the product's enclosure. This symbol may also indicate a procedure that will void your product warranty.



Recycling is important and will help to protect our environment and reduce landfill waste.



This symbol on the product or in the manual means that your electrical and electronic equipment should NOT be disposed of in normal household waste at the end of its life. It should be disposed of separately. Please take it to a collection point for electrical waste.

features & details

The EX-01 Wireless Bluetooth™ Headset has been exclusively designed for gamers and gaming, not mobile phones! So you can now maximise your game time without an irritating, uncomfortable earpiece, and still hear your opponent creeping up behind you on your surround sound system!

01 | Microphone

02 | Speaker

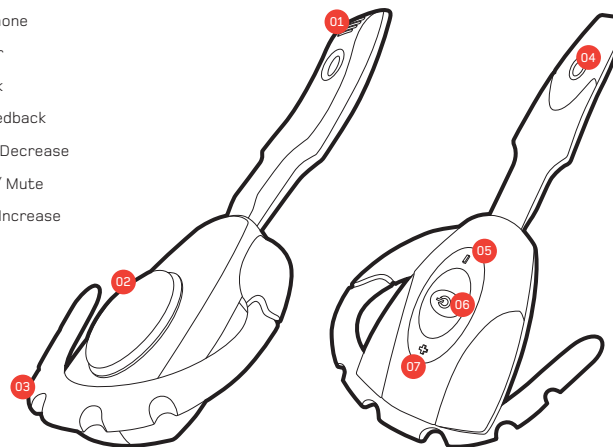
03 | Earhook

04 | LED Feedback

05 | Volume Decrease

06 | Power / Mute

07 | Volume Increase



CONTENTS

03 | Product Features & Details

04 | Setup

06 | Reversing Earhook

08 | Charging

09 | Operation

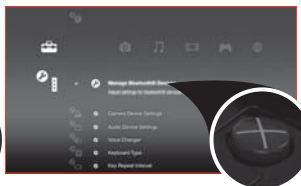
10 | Troubleshooting

11 | Care & Maintenance

pairing your headset



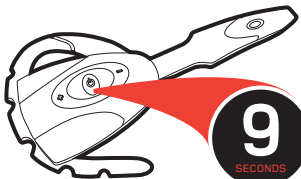
Within the Settings' menu, press X on Accessory Settings.



Press X on the icon labeled: Register Bluetooth® Device.



Press X on Yes.



At the next screen, prepare the Headset to be paired with the PS3 by holding down the power button until the LED flashes Blue & Green. When the LEDs are flashing alternately Blue & Green the headset is ready to be paired.



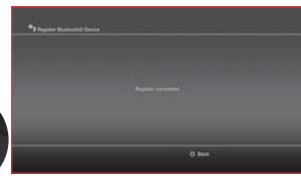
Press X on Start Scanning. Once Scan is complete, the PS3 will recognize all Bluetooth devices within range.



Locate EX-01 from the list of available devices and press X to be prompted for a Pass Key.



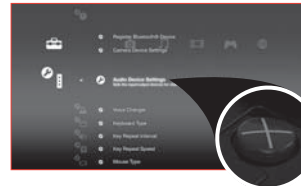
Enter 0000 (four zeros) as the Pass Key and press X on OK.



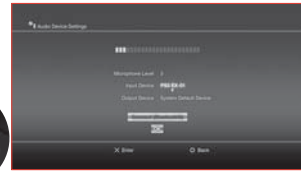
You should then be taken to a new screen stating: Register completed.



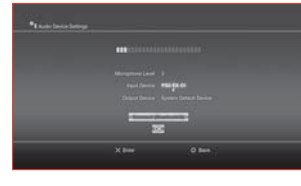
Go to the Settings menu, press X on Accessory Settings.



Press X on the icon labeled: Audio Device Settings.



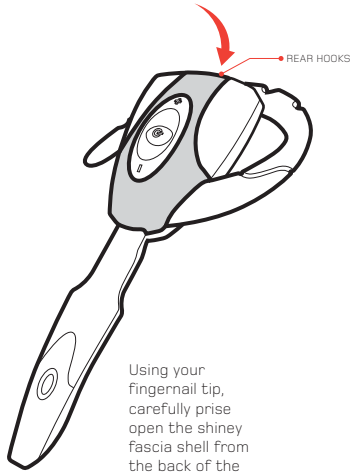
Choose PS3 EX-01 as your input and output device from the lists. Press X to confirm your choices.



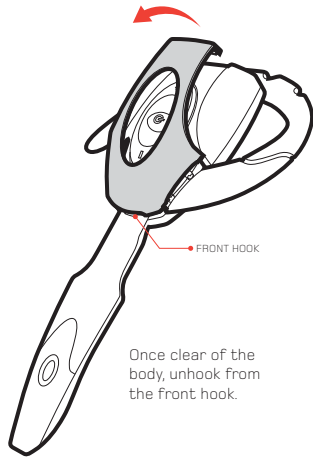
Scroll down and press X when you have highlighted Connect [Bluetooth®]. **Your Headset is now ready to use... enjoy :)**

reversing the earhook

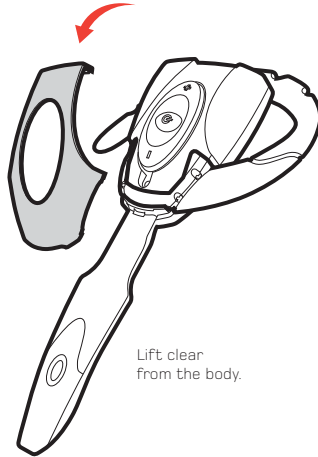
The EX-01 ships with two earhooks, each marked [L] for the left ear and [R] for the right ear. After selecting the appropriate earhook, follow the instructions below:



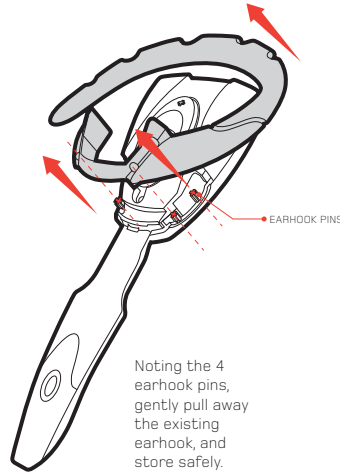
Using your fingernail tip, carefully prise open the shiny fascia shell from the back of the headset upwards and forwards.



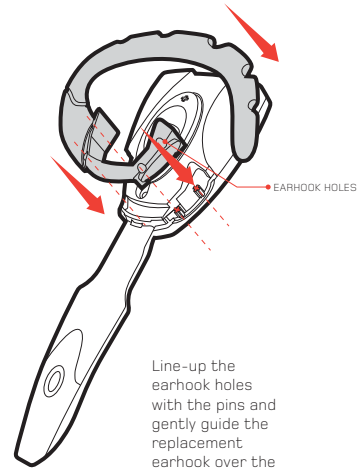
Once clear of the body, unhook from the front hook.



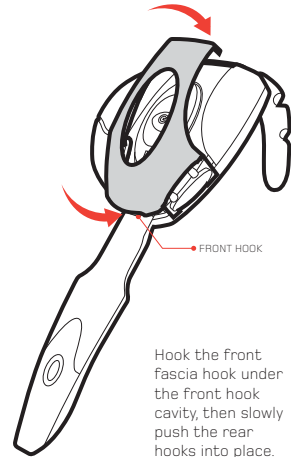
Lift clear from the body.



Noting the 4 earhook pins, gently pull away the existing earhook, and store safely.



Line-up the earhook holes with the pins and gently guide the replacement earhook over the top until set in position.



Hook the front fascia hook under the front hook cavity, then slowly push the rear hooks into place.

charging your headset

The headset contains a rechargeable Li-ion polymer battery. Prior to using the headset for the first time, it is strongly recommended to fully charge the battery.

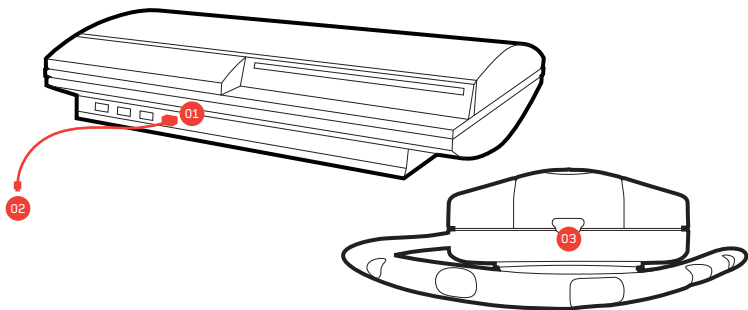
Connect the USB cable to your PS3™ [1] and the mini usb [2] to the headset's charging socket [3]. **The LED will illuminate green during the charging process** and will be off when fully charged. NOTE: Charging indication will be delayed for a few minutes if the headset has not been used for a long time.

charging time

Normally the battery is fully recharged within 3 hours. As soon as the battery is fully charged, the LED will be off or weak Green. Disconnect the USB cable from the PS3™ and the headset.

game time

The fully charged battery offers up to 4 hours continuous use. It is advisable to always recharge after lengthy gameplay so the headset is fully charged for the next round.



Operating your headset


To power on your headset, press and hold the power button for 3 seconds until the LED flashes Blue. **NOTE: If the LED flashes Green only, the battery will need to be charged.**

To power off your headset, press and hold the power button for 3 seconds until the LED flashes Green.

adjusting volume

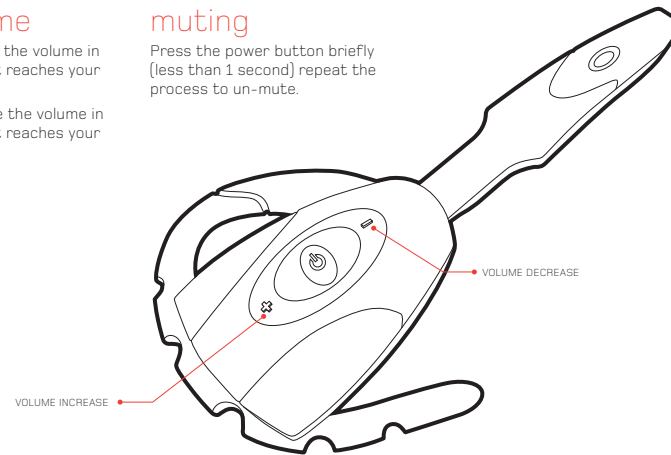
Tap the + button to increase the volume in increments until the headset reaches your desired volume level.

Tap the - button to decrease the volume in increments until the headset reaches your desired volume level.

 Do not try to pair the headset to the console, when the headset is attached to the USB cable. If it is attached it will not pair to the PS3™.

muting

Press the power button briefly (less than 1 second) repeat the process to un-mute.



troubleshooting

Having trouble with your EX-01 Bluetooth™ Headset? These troubleshooting steps will show you the smoothest path to resolving your issue. Be sure to perform troubleshooting before having your product serviced.

The PS3 is unable find the Headset.

- If the Headset has been paired with another Bluetooth device, the PS3 will have trouble finding the Headset. Either remove the Headset from the paired device or turn off the Bluetooth power on the paired device.

The Headset cannot be activated after being charged for 15 minutes.

- To activate the Headset, the battery needs to charge for at least 40 minutes. It is highly recommended to fully charge the battery before use.

No indication of charging is shown.

- Charging indication may be delayed for a few minutes if the headset has not been used for a long time (more than a month) or if the battery is drained.

No sound can be heard from the Headset.

- Make sure that the two devices have been paired.
- Make sure that the two paired devices are within 30 Ft. (9.15 meters) of each other.
- Make sure that the Headset is turned on and charged.
- Check In-game settings.

email: support@gioteck.com

www.gioteck.com

care & maintenance

If the battery is leaking and you come in contact with it, take the following actions:

Contact with eyes:

Do not rub, Flush with clean water.
Seek medical attention immediately.

Contact with skin/clothes:

Clean infected area with water.
Contact your doctor immediately if swelling or soreness occurs.

storage

It is best to store the Headset in a dry and dust free area. Do not store near extreme temperatures.



REPLACING THE BATTERY

Never attempt to replace the Ion-Lithium battery



Never open the Headset unless you plan to dispose of the Headset and recycle your battery. Opening the Headset will void your warranty. Work in an area out of reach of children so that small parts cannot be swallowed. Make sure to follow the directions carefully to avoid injury.



Always make sure to cover any metal contacts on the battery with a piece of tape when disposing of the battery. Never handle damaged or leaking Ion-Lithium batteries. Do not allow battery to come in contact with extreme heat or fire. Avoid direct sunlight or heat sources such as a heater.



RECYCLING ION-LITHIUM BATTERIES.

Please help preserve our environment; Ion-Lithium batteries are recyclable. Make sure to return your battery to a collection and recycling center near you.

FCC WARNING

This device complies with Part 15 of the FCC Rules. Operation is subject to the following two conditions:

- (1) this device may not cause harmful interference, and
- (2) this device must accept any interference received, including interference that may cause undesired operation.

NOTE 1: The manufacturer is not responsible for any changes or modifications not expressly approved by the manufacturer for compliance, such modifications could void the user's authority to operate the equipment.