

EX-03

NEXT-GEN BLUETOOTH® HEADSET FOR PS3™

Thank you for purchasing the EX-03 Next-Gen Bluetooth® headset for PS3™ from Giateck.

We hope that this product will go beyond your expectations for a quality made accessory.

Please read this booklet thoroughly before using the product and review the PS3™ manual for additional details regarding PS3™ operation.


Thank you & enjoy!

PRECAUTIONS


This product has been designed with the highest concern for safety. However, any electrical device, if used improperly, has the potential to cause harm. To help ensure risk-free operation please pay attention to the following guidelines.


- Use only as intended. This is a precision product, handle with care.
- Contains small parts. Not suitable for children under 3 years of age.
- Store in a dry & dust free area.
- Do not store in areas of extreme heat or cold, and avoid direct sunlight or heat sources eg. heaters.
- Do not allow the product to get wet or dirty; doing so may cause damage.
- Do not clean with benzene, paint thinner, acetone, alcohol, or other such solvents.
- Do not take the product apart; doing so will void your warranty and may cause electrical shock.

WARNINGS

 This symbol indicates important installation, operational or maintenance instructions. Always follow these instructions closely.

ENVIRONMENT

 Please help to conserve the environment by recycling the cardboard packaging of this product.

 This product should NOT be disposed of in normal household waste. It should be disposed of separately. Please take it to an electrical waste collection point.

TROUBLESHOOTING TIPS & TO VIEW THIS MANUAL ONLINE:
WWW.GIOTECK.COM

LEGALS

This product complies with the following legal regulations. For further information go to www.giateck.com


Caution: The user is cautioned that changes or modifications not expressly approved by the party responsible for compliance could void the user's authority to operate the equipment. This device complies with Part 15 of the FCC Rules and Industry Canada licence-exempt RSS standard(s). Operation is subject to the following two conditions: (1) this device may not cause harmful interference, and (2) this device must accept any interference received, including interference that may cause undesired operation. Note: This equipment has been tested and found to comply with the limits for a Class B digital device, pursuant to part 15 of the FCC Rules. These limits are designed to provide reasonable protection against harmful interference in a residential installation. This equipment generates, uses and can radiate radio frequency energy and, if not installed and used in accordance with the

instructions, may cause harmful interference to radio communications. However, there is no guarantee that interference will not occur in a particular installation. If this equipment does cause harmful interference to radio or television reception, which can be determined by turning the equipment off and on, the user is encouraged to try to correct the interference by one or more of the following measures:

- Reorient or relocate the receiving antenna.
- Increase the separation between the equipment and receiver.
- Connect the equipment into an outlet on a circuit different from that to which the receiver is connected.
- Consult the dealer or an experienced radio/TV technician for help.

This equipment complies with FCC and IC radiation exposure limits set forth for an uncontrolled environment. End user must follow the specific operating instructions for satisfying RF exposure compliance. This transmitter must not be co-located or operating in conjunction with any other antenna or transmitter.

Le présent appareil est conforme aux Partie 15 des règlements de la FCC et CNR d'Industrie Canada applicables aux appareils radio exempts de licence. L'exploitation est autorisée sous deux conditions suivantes : (1) l'appareil ne doit pas produire de brouillage, et (2) l'utilisateur de l'appareil doit accepter tout brouillage radioélectrique subi, même si le brouillage est susceptible d'en compromettre le fonctionnement. Cet appareil est conforme aux limites d'exposition au rayonnement RF stipulées par la FCC et IC pour une utilisation dans un environnement non contrôlé. L'utilisateur final doit suivre les instructions de fonctionnement spécifiques pour le respect d'exposition aux RF. Les émetteurs ne doivent pas être placés près d'autres antennes ou émetteurs ou fonctionner avec ceux-ci.

 Giateck hereby declares that this product is in compliance with the essential requirements and other provisions of Directive 2004/108/EC. To view the full version of the Declaration of Conformity please go online to doc.giateck.com

 N28707

EX-03

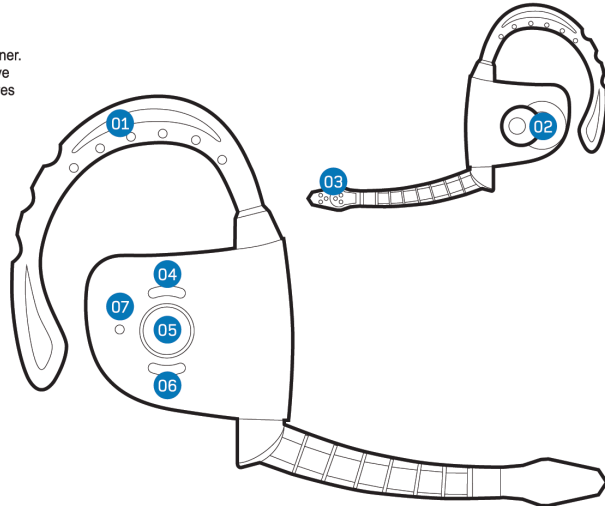
NEXT-GEN BLUETOOTH® HEADSET FOR PS3™

FEATURES & DETAILS

When it comes to PS3™ online game & chat, the EX-03 is a natural gaming partner. Comfortable, lightweight and with intuitive controls at your fingertips, the EX-03 gives you complete power over voice/game balance so nothing comes between you and the game!

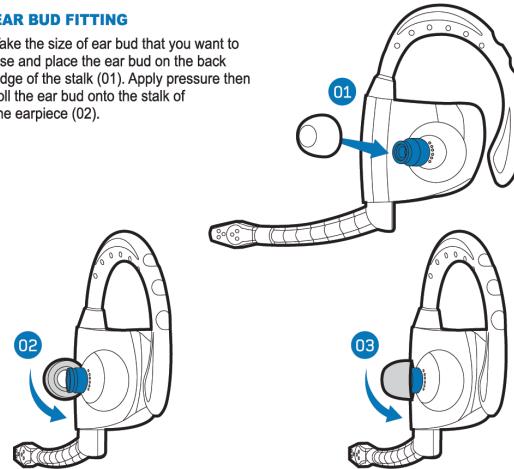
GB

- 01 | Flexible Wired Earhook
- 02 | Earbud
- 03 | Microphone
- 04 | Volume Up
- 05 | Power Button
- 06 | Volume Down
- 07 | LED Feedback



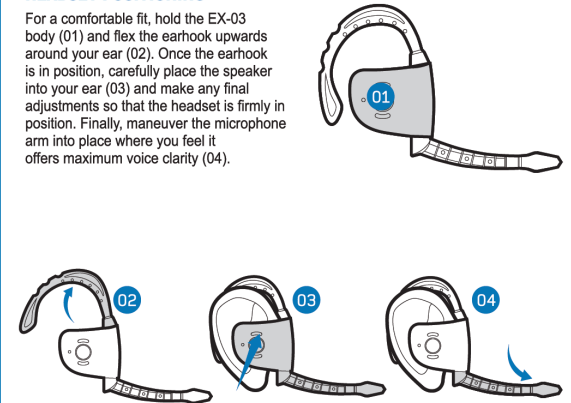
EAR BUD FITTING

Take the size of ear bud that you want to use and place the ear bud on the back edge of the stalk (01). Apply pressure then roll the ear bud onto the stalk of the earpiece (02).



HEADSET POSITIONING

For a comfortable fit, hold the EX-03 body (01) and flex the earhook upwards around your ear (02). Once the earhook is in position, carefully place the speaker into your ear (03) and make any final adjustments so that the headset is firmly in position. Finally, maneuver the microphone arm into place where you feel it offers maximum voice clarity (04).



FR

- 01 | Crochets d'oreille câblés flexibles
- 02 | Écouteur
- 03 | Microphone
- 04 | Augmenter le volume
- 05 | Bouton d'alimentation
- 06 | Baisser le volume
- 07 | Signaux de DEL

ES

- 01 | Gancho con cable flexible
- 02 | Auricular
- 03 | Micrófono
- 04 | Aumentar el volumen
- 05 | Botón de encendido
- 06 | Disminuir el volumen
- 07 | Indicador LED

PT

- 01 | Gancho para Ouvindo com Fios Flexível
- 02 | Almofada para o ouvido
- 03 | Microfone
- 04 | Aumentar Volume
- 05 | Botão de Energia
- 06 | Reduzir Volume
- 07 | Indicações com LED

DE

- 01 | Flexibles Ohrteil
- 02 | Ohrhörer
- 03 | Mikrofon
- 04 | Lautstärke erhöhen
- 05 | Power-Taste
- 06 | Lautstärke senken
- 07 | LED-Feedback

IT

- 01 | Gancho flessibile per orecchio
- 02 | Cuscinetto
- 03 | Microfono
- 04 | Aumenta volume
- 05 | Tasto di accensione
- 06 | Riduci volume
- 07 | LED di stato

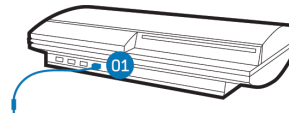
CZ


- 01 | Flexibilní hák s kabelem
- 02 | Sluchátka „špunty“
- 03 | Mikrofon
- 04 | Zvýšení hlasitosti
- 05 | Zap./Vyp.
- 06 | Snížení hlasitosti
- 07 | Kontrolka LED


1. CHARGING YOUR HEADSET


Prior to using the headset for the first time, it is strongly recommended to fully charge the battery for 3 hours.


- 1) Connect the USB cable to your PS3 and the DC connector into the headset's charging socket.
- 2) The LED will illuminate red during charging and will be blue when fully charged. Normally the battery is fully recharged within 3 hours.
- 3) As soon as the battery is fully charged the LED will be blue.
- 4) Disconnect the USB cable from the PS3 and the headset. The fully charged battery offers up to 6 hours use.



 Note: Charging indication will be delayed for a few minutes if the headset has not been used for a long time.

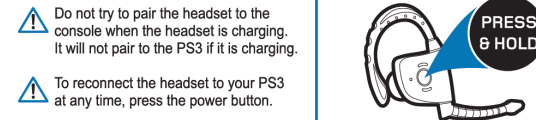
 It is advisable to always recharge after lengthy gameplay.

 Do not try to pair the headset to the console when the headset is charging. It will not pair to the PS3 if it is charging.

 To reconnect the headset to your PS3 at any time, press the power button.

2. PAIRING

- 1) PS3 > Settings > Accessory Settings > Manage Bluetooth® Device > Yes
- 2) Prepare your headset (from off) to be paired by holding down the power button continuously until the LEDs flash alternate Blue & Red.
- 3) Start Scanning > PS3 EX-03 > Enter 0000 (four zeros) > Ok > Register Completed
- 4) Press O (circle button) x2 > Accessory Settings > Audio Device Settings > Input Device: PS3 EX-03 > Output Device: PS3 EX-03 > Ok
- 5) Your EX-03 Bluetooth® Headset is now ready to use. Enjoy!



3. OPERATION

ON/OFF

- 1) To power on your headset, press and hold the power button until the LED flashes Blue. NOTE: If the LED flashes Red only, the battery will need to be charged. A low battery is also denoted by a low tone repeated every 20 seconds.
- 2) To power off your headset, press and hold the power button until the LED flashes Red.

VOLUME CONTROL
Tap the + button to increase the volume in increments and tap the - button to decrease the volume in increments until your desired volume level is reached.

MUTING

Press the power button briefly (less than 1 second) to mute the headset; repeat the process to un-mute. When in mute mode the LED will flash Red & Blue every 5 seconds.

