

i.Tech Bluetooth® 2.0 USB Dongle  
Installation Guide

A. Install Application Program - IVT BlueSoleil

1. Please **DO NOT** plug in the Dongle into your PC
2. Insert the CD-ROM, the installation will start automatically

Note: If the Auto-Run function of CD-ROM is enabled (in Windows, the default setting of this function is usually enabled), installation program will start automatically. If not, you can utilize the Windows Explorer to browse CD content and execute **Setup.exe** manually. See Figure 1.



Figure 1 Setup.exe Icon

3. Please select language, then click “Next - 確定”. Please see Figure 2.

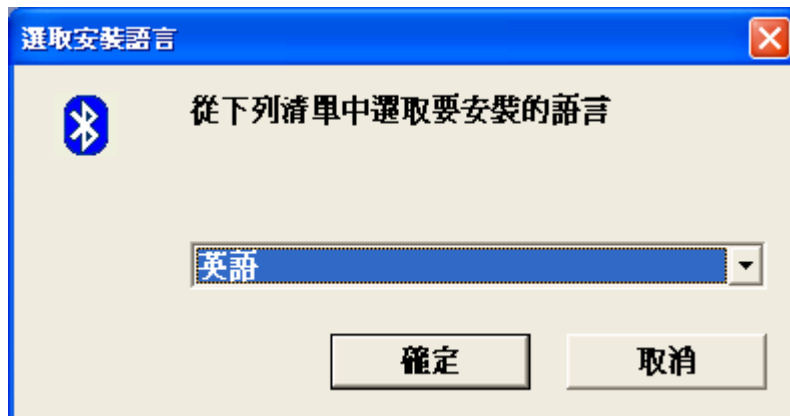


Figure 2 Select application language

4. Please click “Next” (Figure 3) to start application installation. If you would like to change the destination location, please click “Browse” to select the folder.

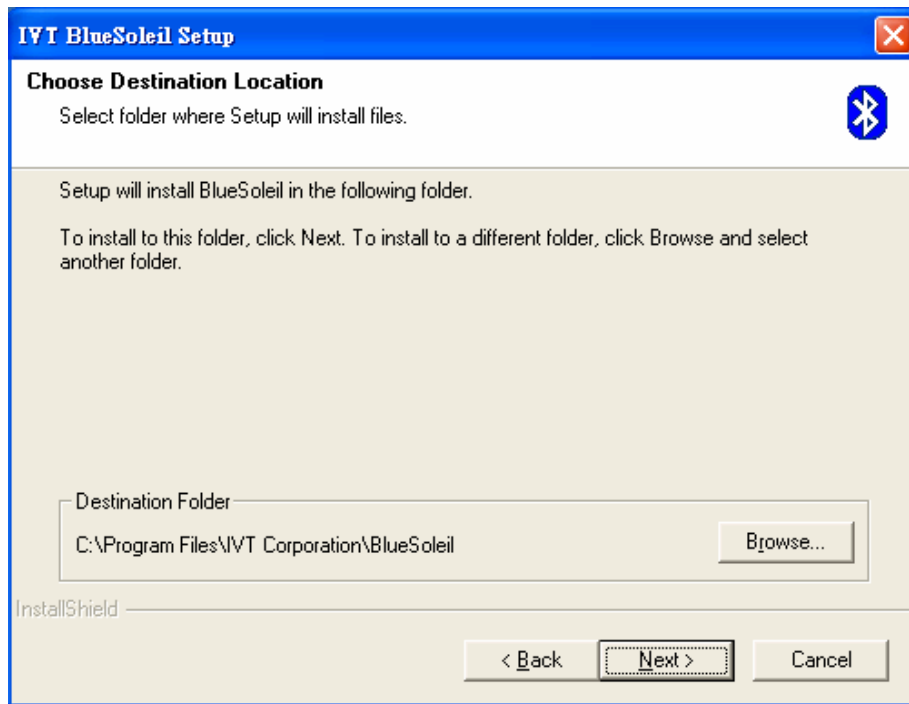


Figure 3 Select Application Install Location

5. After installation, require to restart your PC by click “Finish”.

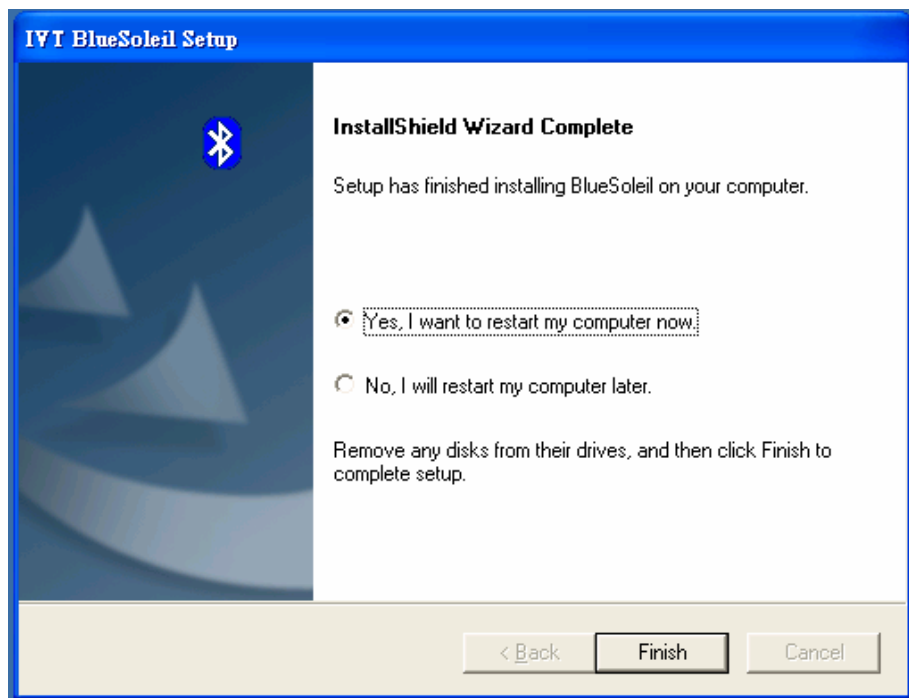


Figure 4 Complete installation

6. Please plug the v2.0 USB dongle (USB Dongle) into USB port (Figure 5), the driver will install automatically.

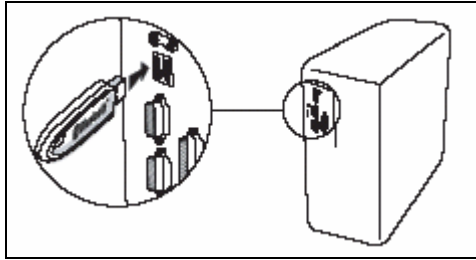




Figure 5 Insert the USB Dongle into PC

7. After installation ,  showed on the desktop and the launcher bar.

## B. Run the Application IVT BlueSoleil

1. Press  on Desktop or right-click on launcher bar to select “Display”. IVT BlueSoleil starts automatically. See figure 6.

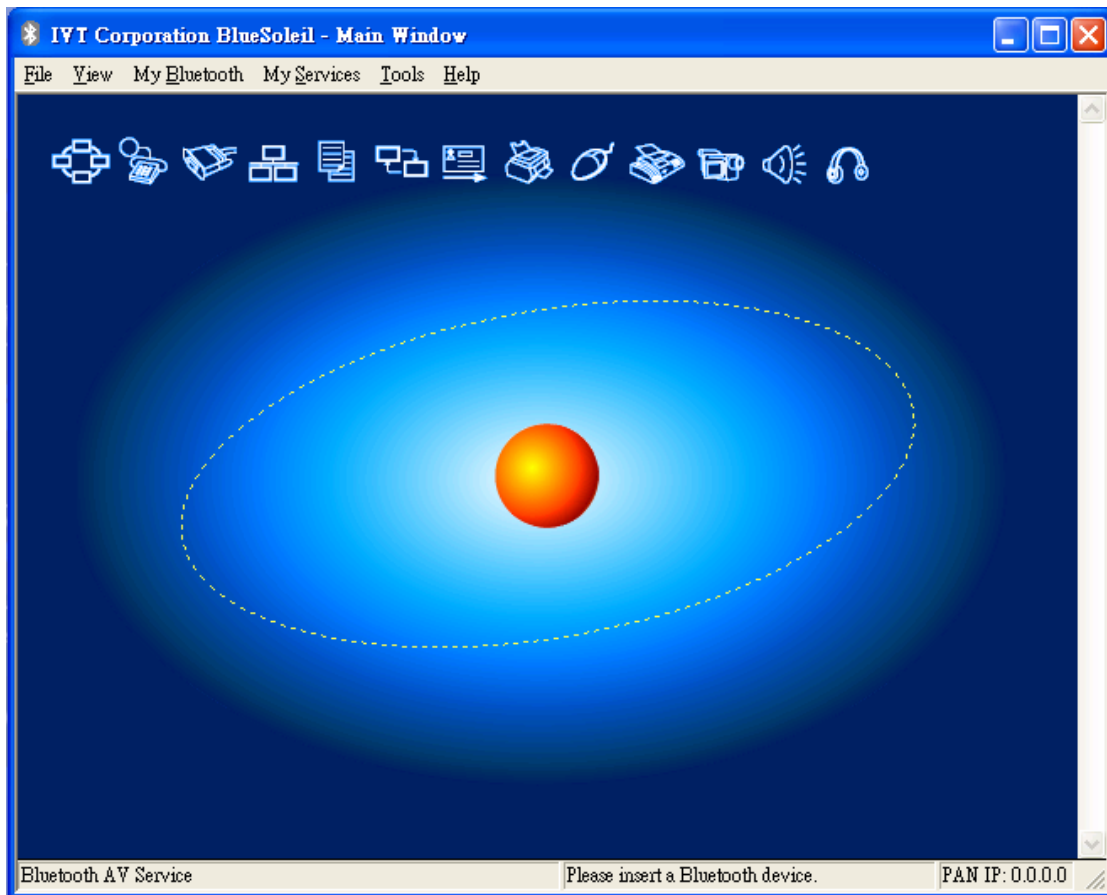


Figure 6 IVT BlueSoleil Main Menu

Note: If the first time use, please enter your Bluetooth Device name and select the host type, then Click “OK” (See figure 7).

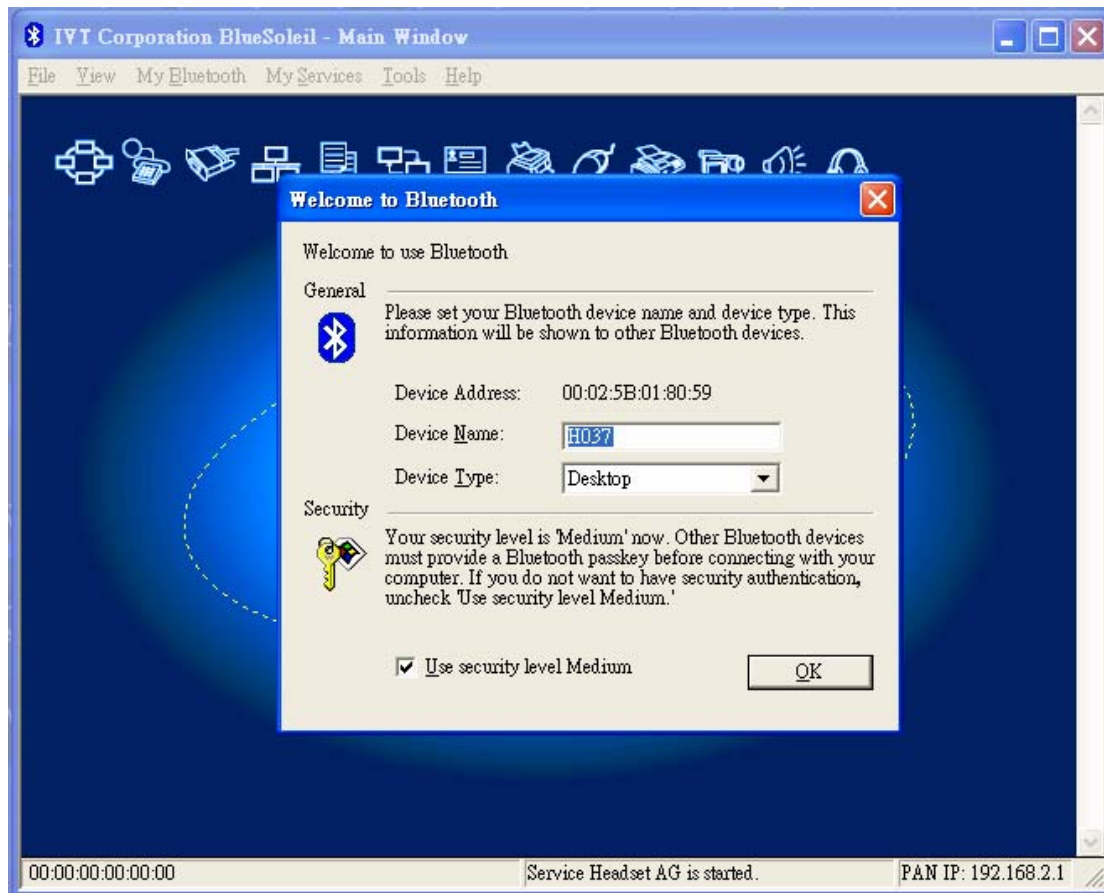















Figure 7 Menu for enter Device Name and Type

2. After assigning the Device name and selecting the Device type, please click the center of IVT application to start device search.

## Support Bluetooth Application Profile

	<p>The <i>Bluetooth</i> Personal Area Networking (PAN) Profile enables PCs, laptops, PDAs, and other <i>Bluetooth</i> enabled devices to form either of two kinds of PAN networks. In a Group ad-hoc Network (GN), which functions as an isolated network, multiple PAN Users (PANUs) are linked together via a GN controller. Alternatively, a PAN can consist of multiple PANUs linked to a Network Access Point (NAP), which provides access to external Local Area Network (LAN) infrastructure. BlueSoleil supports all three of these device roles — GN (controller), PANU, and NAP.</p>
	<p>The <i>Bluetooth</i> Dial-up Networking (DUN) Profile enables users to wirelessly dial-up to Internet through a <i>Bluetooth</i> modem or a mobile phone that supported the DUN Profile.</p>
	<p>The <i>Bluetooth</i> Serial Port Profile (SPP) provides PCs, laptops, PDAs, GPS receivers, cordless serial adapters, and other Bluetooth enabled devices with a virtual serial port, enabling them to connect with each other wirelessly via <i>Bluetooth</i> instead of a serial cable.</p> <p>BlueSoleil supports four <i>Bluetooth</i> Serial Ports for out-going connections and two <i>Bluetooth</i> Serial Ports for incoming connections.</p>
	<p>The <i>Bluetooth</i> LAN Access Profile (LAP) allows users to access a Local Area Network (LAN) via a <i>Bluetooth</i> enabled LAN access point.</p>
	<p>The File Transfer Profile (FTP) enables users to transfer files and/or folders between <i>Bluetooth</i> enabled laptops, desktops, PDAs, mobile phones, etc.</p>
	<p>The <i>Bluetooth</i> Synchronization (SYNC) Profile enables users to synchronize PIM objects on their computer with that of other <i>Bluetooth</i> enabled computers as well as <i>Bluetooth</i> enabled mobile phones, PDAs, and other devices.</p>
	<p>The <i>Bluetooth</i> Object Push profile (OPP) enables users to send and receive Personal Information Management (PIM) data objects (Including messages, notes, calendars items, and Business cards) to and from a <i>Bluetooth</i> enabled PDA or mobile phone.</p>
	<p>The <i>Bluetooth</i> Printer Profile (HCRP) enables your computer to connect to a <i>Bluetooth</i> enabled printer.</p>
	<p>The <i>Bluetooth</i> Human Interface Device (HID) profile enables users to use <i>Bluetooth</i> enabled HID Device such as keyboard, mice or joystick to control your computer.</p>

	The <i>Bluetooth</i> FAX profile enables users to send fax from a computer via a <i>Bluetooth</i> enabled mobile phone or modem.
	The Basic Imaging Profile (BIP) enables users to receive pictures from a <i>Bluetooth</i> device such as digital camera, mobile phone, or other compatible device. It also enables remote control of shooting, display, and other imaging functions.
	The AV Headphone Profile enables users to use a <i>Bluetooth</i> enabled headphone to listen high-quality stereo music played in a computer.
	The Headset Profile enables users to use a <i>Bluetooth</i> headset as wireless earplug or microphone.

## **Federal Communications Commission (FCC) Statement**

15.21

You are cautioned that changes or modifications not expressly approved by the part responsible for compliance could void the user's authority to operate the equipment.

15.105(b)

This equipment has been tested and found to comply with the limits for a Class B digital device, pursuant to part 15 of the FCC rules. These limits are designed to provide reasonable protection against harmful interference in a residential installation. This equipment generates, uses and can radiate radio frequency energy and, if not installed and used in accordance with the instructions, may cause harmful interference to radio communications. However, there is no guarantee that interference will not occur in a particular installation. If this equipment does cause harmful interference to radio or television reception, which can be determined by turning the equipment off and on, the user is encouraged to try to correct the interference by one or more of the following measures:

- Reorient or relocate the receiving antenna.
- Increase the separation between the equipment and receiver.
- Connect the equipment into an outlet on a circuit different from that to which the receiver is connected.
- Consult the dealer or an experienced radio/TV technician for help.

### **Operation is subject to the following two conditions:**

- 1) this device may not cause interference and
- 2) this device must accept any interference, including interference that may cause undesired operation of the device Please send revised Manual.

### **FCC RF Radiation Exposure Statement:**

This equipment complies with FCC radiation exposure limits set forth for an uncontrolled environment. End users must follow the specific operating instructions for satisfying RF exposure compliance. This transmitter must not be co-located or operating in conjunction with any other antenna or transmitter.



© i.Tech Dynamic Limited 20

2005

Windows® is registered trademark of Microsoft Corporation.  
Bluetooth® and the Bluetooth logos are trademarks owned by  
Bluetooth SIG, Inc, USA and licensed to i.Tech Dynamic Ltd.



Printed in China

~~PN 827-11-0014UE-01~~