



### Bluetooth

© 2005 Hutchison Harbour Ring Enterprises Limited  
All rights in this publication are reserved and no part may be quoted or reproduced without the prior written permission of the company. The contents of this publication are believed to be correct at the time of going to print, but any information, specifications, products or services mentioned may be modified, supplemented or withdrawn without any prior notice.

The Stylized i.Tech logos are trademarks owned by Hutchison Harbour Ring Enterprises Limited and/or its affiliates.

Bluetooth® and the Bluetooth logo are trademarks owned by Bluetooth SIG, Inc. USA and licensed to i.Tech Dynamic Limited.

iPod® is the trademark or registered trademark of Apple Computer, Inc., in the United States and other countries.

**Caution:** Changes or modifications not expressly approved by the party responsible for compliance could void the user's authority to operate the equipment.

i.Tech declares under our sole responsibility that the product is in conformity with the provisions of the following Council Directives: 1999/5/EC

**Notes on Environmental Protection**  
After the implementation of the European Directive 2002/96/EC in the national legal system, the following applies: Electrical and electronic devices must not be disposed of with domestic waste. Consumers are obliged by law to return electrical and electronic devices at the end of their service lives to the public collection points that are set up for this purpose or designated points of sale. However, such details are defined by the national law of the respective country. This symbol on the product, the instruction manual or the packaging indicates that the product is subject to these regulations. By recycling, reusing the materials, or other forms of utilizing old devices, you are making an important contribution in protecting our environment.

### Federal Communications Commission (FCC) Statement

15.21  
You are cautioned that changes or modifications not expressly approved by the party responsible for compliance could void the user's authority to operate the equipment.

15.105(b)  
This equipment has been tested and found to comply with the limits for a Class B digital device, pursuant to part 15 of the FCC rules. These limits are designed to provide reasonable protection against harmful interference in a residential installation. This equipment generates, uses and can radiate radio frequency energy and, if not installed and used in accordance with the instructions, may cause harmful interference to radio communications. However, there is no guarantee that interference will not occur in a particular installation. If this equipment does cause harmful interference to radio or television reception, which can be determined by turning the equipment off and on, the user is encouraged to try to correct the interference by one or more of the following measures:

- Reorient or relocate the receiving antenna.
- Increase the separation between the equipment and receiver.
- Connect the equipment into an outlet on a circuit different from that to which the receiver is connected.
- Consult the dealer or an experienced radio/TV technician for help.

**Operation is subject to the following two conditions:**  
1) this device may not cause interference and  
2) this device must accept any interference, including interference that may cause undesired operation of the device.

**FCC RF Radiation Exposure Statement:**  
This equipment complies with FCC radiation exposure limits set forth for an uncontrolled environment. End users must follow the specific operating instructions for satisfying RF exposure compliance. This transmitter must not be co-located or operating in conjunction with any other antenna or transmitter.

Dispose of the packaging and this product in accordance with the latest provisions.

http://www.itechdynamic.com 02/2006  
Printed in China P/N:SU-51A05134-01



## i.Tech BlueCON G5



### User Guide



### Product Specifications

Bluetooth Specification:	Version 1.2 Class 2
Bluetooth Profiles Supported:	A2DP and AVRCP
Range of Frequency:	2.4GHz spectrum
Reception Distance:	Up to 10 metres
Normal Charging Time:	Within 3 hours
Music Play Time*:	Up to 7 hours
Dimensions:	62 mm (L) x 30.5 mm (W) x 13 mm (H)
Weight :	17.2 grams

\* May vary due to the user's habit, different modes of operation and conditions.  
The manufacturer has the right to modify infos, product spec. and product IDs without any advice.



Thank you for purchasing the i.Tech BlueCON G5, a wireless audio dongle that works exclusively with your iPod Nano and offers you a novel solution to listen to your music from your Mp3 without the hassle of wires. Read more about the features and functions of the BlueCON G5 and learn how you can have total control of your music.

### Declaration of Conformity (DoC)

We, i.Tech Dynamic Ltd., declare that the following product:

Product Name: i.Tech BlueCON G5  
Model No.: C51-A5134-XX

Is in conformity with the following essential requirements of Council Directive: 1999/5/EC (referred to as R&TTE Directive): Article 3.1.a, 3.1.b and 3.2, and the product is manufactured in accordance with Annex II of the above directive.

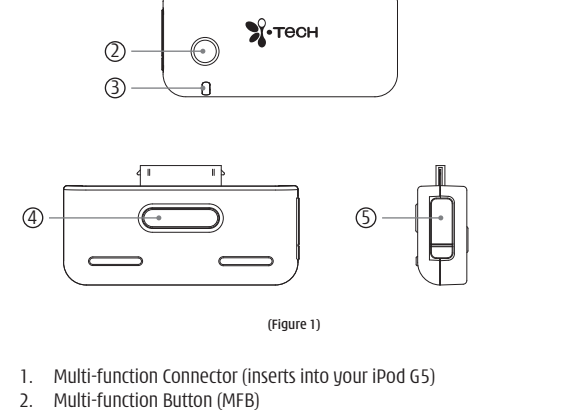
A copy of the Declaration of Conformity can be found at:

<http://www.itechdynamic.com>

### Table of Contents

i.Tech BlueCON G5 Overview.....	1
Getting Started .....	2
Charging Your Dongle .....	2-3
Normal Charging Time.....	3
Music Play Time .....	3
Battery Low Indication.....	3
Turning Your Dongle On and Off .....	4
Charging Your Dongle and iPod®.....	4
Steps to Connect and Remove the Dongle.....	5
Pairing Your Dongle.....	6
Care and Maintenance .....	7-8
Safety Information .....	9
Troubleshooting .....	10
Declaration of Conformity (DoC).....	11
Product Specifications .....	12

### i.Tech BlueCON G5 Overview



1. Multi-function Connector (inserts into your iPod G5)
2. Multi-function Button (MFB)
3. Status Indicator
4. Release Button - disconnect from iPod G5
5. Charging Socket (mini USB)

### Troubleshooting

**The Dongle**  
If you are unable to connect your dongle to the headset, please try the following:

- Check your headset to see if it has the A2DP profile and works with AVRCP enabled-devices.
- Ensure the dongle is turned on and the battery is fully charged.
- Ensure the dongle is paired with your headset within one metre, and when pairing there are no other Bluetooth devices nearby.
- Ensure your headset is paired according to the procedure. Please refer to the headset user guide for detailed instructions.
- Ensure the dongle is within a maximum of 10 metres of your headset and there are no obstructions, such as walls or other electronic devices, in between.

If the above suggestions can not help you resolve your problem, please reset your headset and the dongle. To reset the dongle, simply recharge the battery of the dongle again for a few minutes. Then repeat the pairing procedure as described in the section "Pairing Your Dongle".  
The i.Tech BlueCON G5 is compliant with and adopts the Bluetooth Specification V1.2. However, interoperability between the device and other Bluetooth-enabled products is not guaranteed because it depends on compatibility. For more information on the compatibility between the dongle with other Bluetooth-enabled products, please check with manufacturer or visit:  
<http://www.itechdynamic.com>

### Safety Information

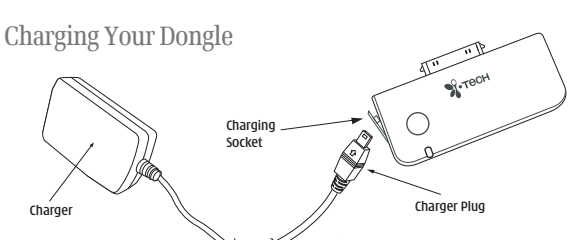
- Check local laws regarding the use of Bluetooth wireless products whilst driving. You are reminded to pay full attention to the road conditions if you are using the dongle whilst driving and ensure you drive in a responsible and safe manner.
- Never allow children to play with the dongle - small parts may be of choking hazard.
- Observe all signs that require an electrical device or RF radio product to be switched off in designated areas. These could include hospitals, blasting areas, and potentially explosive atmospheres.
- Turn off your dongle prior to boarding an aircraft. Do not use your dongle inside an aircraft.
- Never mount or leave your dongle above any air bag deployment area as serious injury may result when an air bag deploys.
- Do not use the dongle in a sauna or steam room.
- Always unplug the charger first before cleaning the dongle.
- Do not attempt to modify the dongle for other purposes.
- Do not attempt to force open or mutilate the built-in battery.
- Dispose of the packaging and the dongle in accordance with local regulations. Do not dispose of the dongle with household waste.

### Getting Started

To use your i.Tech BlueCON G5 ("the Dongle"), please commence with the following steps:

1. Charge your dongle (the normal charging time is approximately three hours)
2. Pair your dongle with a Bluetooth stereo headset that has the A2DP profile and also works with AVRCP enabled-devices. (for best results, pair with the i.Tech Clip R35 or BlueBAND R)
3. Connect your dongle with iPod®.

### Charging Your Dongle



The dongle comes with a built-in rechargeable battery. Prior to using the dongle for the first time, it is recommended that you fully charge the battery.

### Charging Your Dongle

Connect the charger plug to the dongle's charging socket (refer to Figure 2) and plug the charger to an AC wall outlet (the mains). The status indicator will be red while charging.

**IMPORTANT**

1. If the dongle has not been used for a long time or the battery is drained, the status indicator may delay the charging indication for a few seconds.
2. You can listen to music as usual while your dongle and iPod® are on charge.

**Normal Charging Time**  
It normally takes about three hours to fully charge the battery. When the battery is fully charged, the status indicator will turn blue and remain blue. Disconnect the charger from the AC wall outlet and the charger plug from the dongle. Press and hold the MFB (refer to Figure 1) for two seconds to turn on the dongle. Please refer to the section on "Turning Your Dongle On and Off" for details.

**Music Play Time**  
The fully charged battery can offer up to seven hours of music play time.

**Battery Low Indication**  
When the dongle is on and the battery becomes low, the status indicator will start flashing red. Please recharge the battery according to the instructions described above.

### Care and Maintenance

**Dongle**

- Do not drop the dongle as it is fragile.
- Do not expose the dongle to extremely high or low temperatures.
- Do not expose the dongle to moisture or humidity as it is not waterproof.
- Do not use abrasive cleaning solvents to clean the dongle.
- Do not expose the dongle to extremely high or low temperatures.
- Do not dispose of the dongle in a fire as it may explode.
- Do not let your dongle come into contact with sharp objects as this will cause scratches and damage.
- Do not stick anything inside the dongle as this may damage internal components.
- Do not attempt to disassemble the dongle as it does not contain serviceable components.
- If you will not use the dongle for a long period, please store it in a dry place that is free from extreme temperatures and dust.

### Turning Your Dongle On and Off

**Turning On**  
Press and hold the MFB for approximately two seconds until you see the status indicator flashes blue.

**NOTE: Each time when you turn on the dongle by pressing and holding the MFB, it will automatically reactivate the pairing to resume the connection between the dongle and the headset. For pairing procedure, please refer to the section on "Pairing Your Dongle".**

**Turning Off**  
Press and hold the MFB for approximately three seconds until you see the status indicator stop flashing.

### Charging Your Dongle and iPod®

You may charge your dongle and iPod® together. Connect your iPod® to the dongle (refer to the following section on "Steps to Connect and Remove the Dongle"), and then charge your dongle accordingly (refer to the section on "Charging Your Dongle"). While charging, you can continue listening to the music playing from your iPod®.

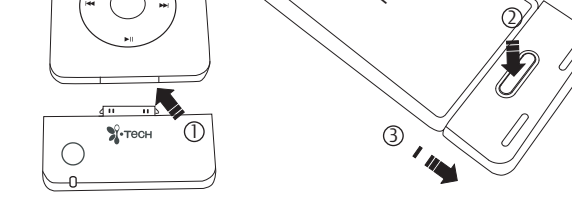
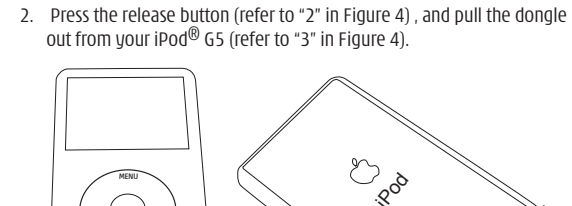
### Steps to Connect and Remove the Dongle

**To Connect**

1. Gently plug your dongle into your iPod® G5 (as shown in Figure 3).

**To Remove**

2. Press the release button (refer to "2" in Figure 4), and pull the dongle out from your iPod® G5 (refer to "3" in Figure 4).



### Pairing Your Dongle

Prior to using your dongle for the first time, you must pair it with a Bluetooth stereo headset, for best results we recommend you pair it with the i.Tech Clip R35 which features remote control functions or any of the Bluetooth Stereo Headphone range e.g. BlueBAND, Clip IIs & IIs or the Clip S35.

The information in this section describes the pairing procedure for the dongle with a typical Bluetooth headset. However, the pairing procedure may vary with different models of Bluetooth headset. Please refer to the user guide provided by the headset manufacturer for pairing details.

1. Before pairing, ensure that the headset is off.
2. Press the MFB button on the dongle and hold it for eight seconds until the status indicator starts flashing blue and red alternately. The dongle is now in pairing mode.
3. Turn on your Bluetooth headset (A2DP profile enabled) and start the pairing mode. Place the dongle and the headset where they are no more than one metre apart, and ensure that there are no obstructions in between or other Bluetooth devices nearby.
4. Continue to press and hold the MFB on both devices when their status indicators are still flashing blue and red alternately.
5. Once the pairing has been successfully completed, the status indicators on both devices will change to flash blue only.
6. Now you can enjoy listening to music from your iPod® Nano with the dongle.

**Note:**

- If the status indicator flashes purple instead of blue, or is off, please repeat steps 1 to 6 above to start pairing again.
- If you have a Bluetooth mobile handset that you would like to use together with the dongle and the headset, please pair your mobile phone with the headset first BEFORE pairing the headset with the dongle.
- The default passkey of the dongle is "8888".