

iBaby Monitor

Model: H1

User Manual

Index

1	Introduction	3
1.1	The package contents	3
1.2	Product Features	3
1.3	Product Specifications	4
2	Appearance and Interface	6
2.1	Appearance	6
2.2	Back of the camera	6
3	Set-up and Installation	7
4	Returns and Exchanges	9
4.1	What is your return policy?.....	9
4.2	Can I exchange an item?	9
5	FCC Caution.....	10

1 Introduction

The iBaby monitor works with your iPod touch, iPhone or iPad so you can see and hear your baby anytime, anywhere as long as you are connected to the internet (including Wi-Fi, 3G/4G network, etc.). From your free app, you set motion/sound alerts, zoom in and snap photos so you never miss an important moment.

"This product is meant for providing convenience for baby monitoring. The manufacturer is not responsible for any legal liability caused by negligence. "

1.1 The package contents

- ✓ 1 Camera
- ✓ 1 Power Adapter
- ✓ 1 Quick Installation Guide

1.2 Product Features

- ✓ Supports 802.11b/g/n protocol for wireless monitoring.
- ✓ It works on TCP/IP network protocols.
- ✓ Users can browse video with an iPod Touch, iPhone and iPad, android devices.
- ✓ Selectable video resolution for comprehensive network bandwidth & mobile device
- ✓ Local lullaby storage & playing.
- ✓ Half duplex two-way talkback
- ✓ High performance P2P technology for high reliable connectivity.
- ✓ Video & audio recording (local , iBaby cloud) , sharing (Facebook ,Youtube,etc).
- ✓ Pan & tilt support
- ✓ Supports Micro SD Card Recording
- ✓ Supports UPNP, P2P, and port forwarding automatically on the router.

1.3 Product Specifications

Model: Helmet H1		
Features	P2P	Support P2P
	Cloud Storage	Support the pictures stored in the cloud
CPU	OS	Embedded Linux OS
	CPU	32Bit RSIC Embedded Processor
Video	Compression	H.264 baseline
	Frame rate	Max.30fps
	Resolution	HD(1280*720),VGA(640*480),QVGA(320*240)
	Image Rotation	Brightness, contrast, resolution is adjustable, Mirror /Flip
	Lens	f=3.6mm, F=2.0, Fixed Iris
Lighting	Minimum illumination	0 Lux(IR on automatically)
	Lighting	10pcs 12ML Infrared LEDs, 6m distance
Audio	Compression	G711
	Audio In	One way input / Internal Microphone
	Audio Out	One way output / Internal Speaker
	User Access	Support 12 users visiting on the same time
	Protocol	TCP/IP , HTTP , UDP , DHCP , UPNP,NTP,P2P
	IP address	DHCP IP address
WIFI	Protocol	Support 802.11b/g/n
	Encryption	Support WEP/WPA/WPA2 encryption
	Setting	Monitor automatically get the IOS device is currently connected Wi-Fi account and password
	USB interface	Connect with IOS devices
	antenna port	One external antenna port
PTZ	Motor	Built-in motor control
	Coverage	Horizontal : 350° , Vertical : 70°
Other	Shape material	Plastic
	Work	Indoors

	environment	
	Power	DC5V 1.5A
	Reset	One
	Product power	Daytime 2.5W , night 3W
	Operating environment	Temperature : 0~40 °C , humidity : 30°C ≤75%
	Storage environment	Temperature : -40°C ~ 55°C , humidity : 40°C ≤90%
	Size	Monitor size: 113mm(L)*111mm(W)*131mm(H) Package size: 220mm(L)*164mm(W)*141mm(H)
	Weight	Weight : 358g
	Package contents	Power Adapter , Quick start guide, Warranty card, Bracket and Screw
Software	Software	IOS6.0 or later , Android4.0 or later
Certification	Certification	FCC CE ROHS RCM

2 Appearance and Interface

2.1 Appearance



2.2 Back of the camera



1 Power Input Socket: Connect Power adaptor, the adaptor's output is 5V 1.5A.

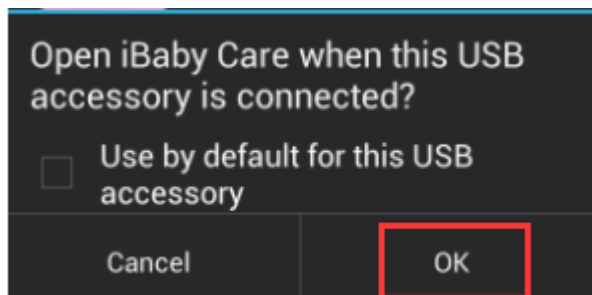
2 SD Card Socket: Supports Micro SD Card Recording

3 Set-up and Installation

- a. Ensure your Android device is connected to your Wi-Fi network.
- b. Download iFamCare App from Google Play to your supported mobile device.



- c. Close all of your smart phone apps running in the background.
- d. Plug the power cable to the baby monitor, wait for 60 seconds until the red LED lights start flashing.
- e. Connect your Android smart phone and baby monitor with a USB cable.
- f. Select 'OK' when asked, 'Open iFamCare when this USB accessory is connected?'.

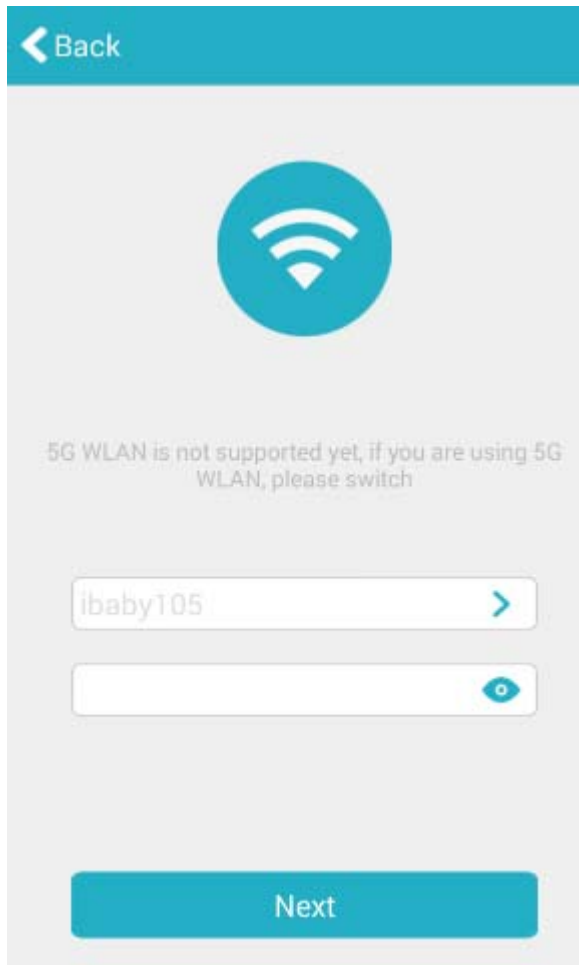


- g. Create an account and log in.



The image shows a login and sign-up form for iFamCare. The background is a teal color with a faint world map and a network of white dots and lines. At the top center is the iFamCare logo, which consists of a cluster of white dots forming a partial circle to the left of the text "iFamCare" in white. Below the logo, there are two white input fields. The first is labeled "Email Address" and the second is labeled "Password". Below the password field is a link that says "Forgot password?". At the bottom of the form are two white buttons with rounded corners and a thin white border. The top button is labeled "LOGIN" and the bottom button is labeled "SIGN UP WITH EMAIL".

- h. Type in your Wi-Fi password, and click 'Next' button, make sure your password is correct.



- i. Proceed to follow the simple onscreen instructions to complete the setup.

4 Returns and Exchanges

4.1 What is your return policy?

Defective merchandise may be returned to us within 30 days from the date merchandise was received. Item(s) must be returned in the condition received or, understandably, we will not be able to accept your return. We will credit your refund to the original credit card, with shipping and handling charges deducted from the refund amount.

4.2 Can I exchange an item?

Exchanges are only allowed when the merchandise is defective or damaged upon receipt.

5 FCC Caution:

Any Changes or modifications not expressly approved by the party responsible for

compliance could void the user's authority to operate the equipment.

This device complies with part 15 of the FCC Rules. Operation is subject to the following two conditions: (1) This device may not cause harmful interference, and (2) this device must accept any interference received, including interference that may cause undesired operation.

FCC Radiation Exposure Statement:

This equipment complies with FCC radiation exposure limits set forth for an uncontrolled environment. This equipment should be installed and operated with minimum distance 8 inches between the radiator & your body.

This transmitter must not be co-located or operated in conjunction with any other antenna or transmitter.

Note: This equipment has been tested and found to comply with the limits for a Class B digital device, pursuant to part 15 of the FCC Rules. These limits are designed to provide reasonable protection against harmful interference in a residential installation. This equipment generates, uses and can radiate radio frequency energy and, if not installed and used in accordance with the instructions, may cause harmful interference to radio communications. However, there is no guarantee that interference will not occur in a particular installation. If this equipment does cause harmful interference to radio or television reception, which can be determined by turning the equipment off and on, the user is encouraged to try to correct the interference by one or more of the following measures:

—Reorient or relocate the receiving antenna.

—Increase the separation between the equipment and receiver.

—Connect the equipment into an outlet on a circuit different from that to which the receiver is connected.

—Consult the dealer or an experienced radio/TV technician for help.