

# iControl System

## Starter Kit Beta User Manual - DRAFT

This document provides more detailed information on how to use your iControl System. More specifically:

- how to read your iControl Summary page
  - adding, changing, and managing your iControl box and devices, and
  - frequently asked questions
- You should consult your Quick Start Guide or Getting Started Guide for information on how to install your system. Your Starter kit or device box will provide a list of what's included with the kit or device.

© 2004-2007 iControl Networks, Inc. All rights reserved. No reproduction in whole or in part without prior written approval. iControl Networks, iControl and I logo design are pending trademarks of iControl Networks. All other trademarks are the property of their respective owners. Information contained herein is subject to change without notice. The only warranties for iControl products and services are set forth in the express warranty statements accompanying such products and services. Nothing herein should be construed as constituting an additional warranty. iControl shall not be liable for technical or editorial errors or omissions contained herein.

Printed in USA. Version 2.0 January 2007

# **Table of Contents**

**Chapter 1**

**Chapter 2**

**Chapter 3**

**Chapter 4**

**Chapter 5**

**Chapter 6**

**Chapter 7**

**Chapter 8**

**Chapter 9**

**Chapter 10**

**Chapter 11**

**Appendix A**

**Check pages**

**Getting Started 3**

**About your iControl box 9**

**Using your System 11**

**Using your Wired Camera 19**

**Using your Door/Window Sensor 32**

**Using your Keychain Remote Control 33**

**Using your Lamp Module 36**

**Using your Motion Sensor 37**

**Adding Additional Devices 38**

**Frequently Asked Questions 42**

**Terms and Conditions, Warranty Information, and More 44**

**Battery Maintenance 45**

## **Getting Started**


Your iControl Summary page is where you begin using your iControl System; the iControl Summary page is your portal to your iControl System.

### **To begin, log on**

First, go to a web browser and enter [www.icontrol.com](http://www.icontrol.com). In the customer login area, type the user name and password provided to you via email when you purchased your iControl product.

You will be presented with your Summary page. This web page provides a fast, simple view into the status of your iControl box and devices. It also is the starting point from which you can monitor your system's status, change your devices' setup, add devices, set and change notifications, and set and modify automations.

Here is an example of the Summary page where you can access the many functions of your iControl System.

iControl Offices Reza Raji | Thursday, Feb 10, 2005 | [Sign Out](#) 

Summary Details Notifications Automation Schedules System

QuikControl Mode ?

**Status** Away Mode

Current States

- Back door (large) - Open
- Thermostat Temperature - 74°
- Front door (recessed) - Closed
- Thermostat Heat Setpoint - 69°
- Thermostat Cool Setpoint - 61°

**Updates**

Last Today at 11:00 AM  
Next Today at 11:00 AM

Pending Updates

- Thermostat Cool Setpoint 61°
- Thermostat Heat Setpoint 69°

**Pictures**



**Today's Schedule** coming soon

- 5:00 am Thermostat to 70, Heat, Auto Fan
- 9:00 am System to Away Mode
- 9:15 am Turn Foyer Lights Off
- 7:30 pm Turn Sidewalk Lights Off

**Alarm History**

Past 7 Days

- Back door (large) 10:57a 2/10
- Back door (large) 10:52a 2/10
- Front dcor (recessed) 10:33a 2/10
- Front dcor (recessed) 10:33a 2/10

**Reminders**

- 12/31 Change Furnace Filter (yearly)
- 2/15 Update Sprinkler Schedule (seasonal)
- 3/1 Clean Gutters (Spring)

## Read your Summary page

This section provides a definition of the many terms found on your Summary page and serves as a good background to the iControl System.

### Tabs

Your iControl Summary page has five major tabs.



Summary tab When you log onto your iControl System from [www.icontrol.com](http://www.icontrol.com), your landing page is the Summary page. This is where you

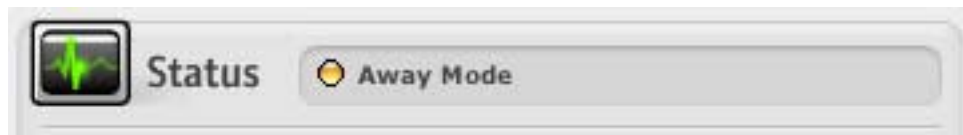
begin using your System. The Summary page consists of the following series of windows.



**Status window** The top portion of this window indicates the overall status of the system and the current mode the system is in. The status light can have three possible colors as described below:

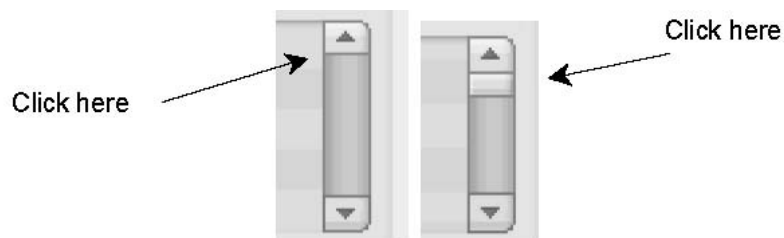
- Green – No alarm conditions. System operating normally
- Yellow – One or more device alarm conditions (e.g. motion detected)
- Red – System problem (e.g. iControl box communication problem).

The Status window also shows the current mode for your iControl System. Here, the System is in 'Away Mode'.



The rest of the Status window is a list showing the current state of all the devices in the system. In the screen shown earlier, three devices appear: a door/window sensor called 'Back door'; a Thermostat showing the current temperature at 74 degree and its Heat Setpoint to of 69 degrees and Cooling Setpoint of 61 degrees; and a door/window sensor labeled 'front door'.

Your house may have many more devices than three and to view these you place your cursor over the up or down arrow to scroll to see additional devices or on the small box inside the scroll bar.



**Current states** Current states refer to the status of all of your devices. If a device has a yellow triangle next to it, the triangle indicates that the device has recognized a change that creates an alarm. The following table shows the possible states and the alarm conditions of Starter Kit devices.

Device	Possible state	Example	Alarm Condition
Door/Window Sensor	Open, Closed	Open indicates the door or window is open	Open
Motion Sensor	Occupied, Empty	Occupied means a person is in the monitored area	Occupied

Additional optional devices, such as freeze, water, smoke and heat sensors have their own associated states as well but are not described here since they are not part of the iControl Starter Kit.



**Pictures window** Here you will see thumbnails of pictures or video from each of your iControl cameras. In the Summary page shown earlier, three thumbnails are shown, as three cameras are active. If you hover the cursor over a thumbnail, the name of the associated camera is displayed. You can also click on the thumbnail and it will expand. From there you can take a new picture, view past pictures, watch live video and delete pictures.



**Alarm History** This window shows the record of the alarms recognized by the devices installed in your iControl System. An alarm occurs whenever a device detects a change, such as a door/window sensor detecting a door open or a motion sensor detects movement. (These are the only two types alarms available from the devices in the Starter Kit. Other optional devices provide alarms for freezing, water leakage, etc. and these devices will be offered in the future). For each change, it shows the time of the alarm. Each item in the alarm history has a yellow triangle next to it, indicating that it is an alarm.

You can click on any change to learn more about the device. Use the scroll bar on the right to scroll down the events. The Alarm History only saves the last 7 days of alarms.



**Pending Updates window** This window shows the changes that you made to your iControl box or devices. They will be implemented the next time your iControl box communicates with the iControl servers.



In this example, the Thermostat will change its setpoint for cooling to 64 degrees and the heating setpoint to 76 degrees. (Note, a thermostat device is not part of your Starter Kit but is available as an optional accessory. Please go to [www.icontrol.com](http://www.icontrol.com) for more information.)

Reminders window Reminders are not implemented in Beta.

Schedules window Schedules are not implemented in Beta.



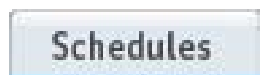
**Details tab** This tab presents a listing of all the devices installed in your system. It displays their current state, images from any cameras installed in your system, and the current settings and ambient temperature from any thermostats installed in your system. If you click on any device name, you will be taken to its device page which provides detailed information about the device including the device's name that you chose, the device ID, and manufacturer. If you click on a photo image, you will be taken to an expanded view of that image where you can take additional images and access thumbnails of previously taken images.



**Notifications tab** By clicking on this tab, you will go to a web page where you can set notifications for each mode (Home, Away, and Sleep). For example, you can have an email sent to you when your iControl system is in Away mode that a device recognizes a change such as a Door/Window Sensor detecting an open door. See Chapter 3 entitled, Using your iControl System, for more details on setting and changing notifications.



**Automation tab** By clicking on this tab, you will go to a web page where you can set automations. An automation is an action taken by a device based on the change in the state of another device. For example, a Door/Window Sensor detects an open door; when this change occurs, a camera takes a picture.



**Schedules tab** By clicking on this tab, you will go to a web page where you can set schedules for your devices. For example, you can set by time of day or day of week, how devices operate. For example, every night at 10PM, every lamp module changes state causing every light in the house controlled by a lamp module turn off. This feature is not implemented in Beta.

## System

**System tab** This tab is most useful for seeing a complete list of devices in your system and confirming that a device was installed and is working. The System tab also provides a way to add and delete a device. You may also access the device page via this tab to change the device's name or gather such information as device ID and manufacturer.

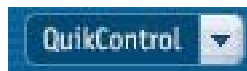
### *Definition of other items on the Summary page*

**Help button** Help which is indicated by a '?' mark is not yet implemented.



**Mode** Your iControl System has three modes, Home, Sleep and Away. You can set your System in any of the modes. For example, the system can be in Home mode while you are home and Sleep mode when you are asleep. The mode setting affects the behavior of the system. For example, you may want receive notifications only when you are Away from your home.

**QuikControl button** QuikControl is shortcut that allows you to have one of your devices take an action.



Click on the QuikControl button and you will see the actions that you can take. Two actions are available for the starter kit devices: Have a camera take a picture and change the brightness of a lamp controlled by the lamp module. (You will have had to install a camera or a lamp to see these QuikControl actions). A third action, change the temperature is available if an optional thermostat is bought and installed.

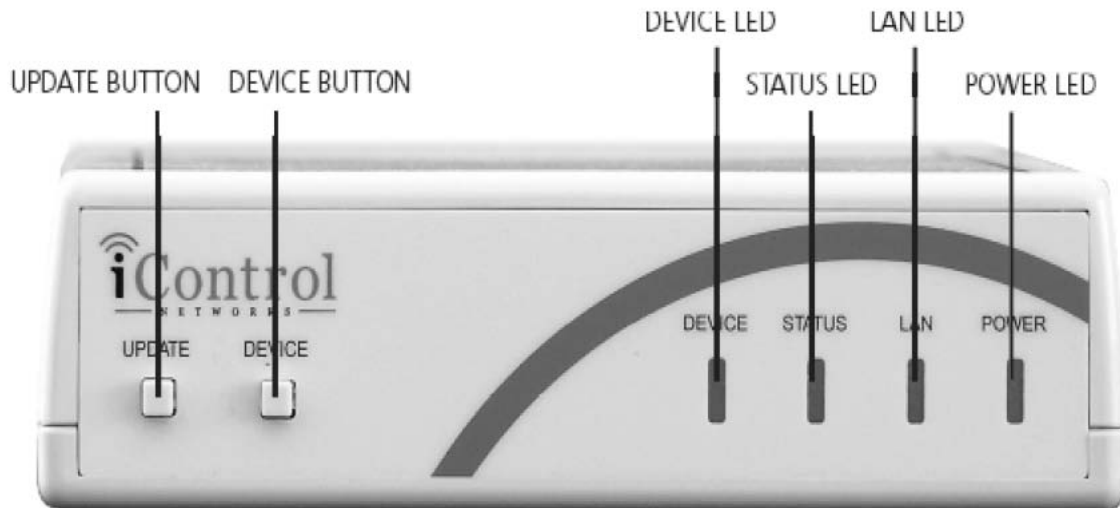
## About your iControl Box



This section describes some of physical characteristics of the iControl box.

### **iControl Box Indicator Lights**

The iControl box has the following buttons and indicator lights:



#### **DEVICE light:**

Blinks green when your box is communicating with lamp modules, door/window sensors, motion sensors, and other devices. You may not see this LED turn on and off often because most of your devices act infrequently (such as turning on a light in the evening) and therefore will blink very infrequently.

#### **STATUS light:**

Used for troubleshooting.

#### **LAN light:**

Flashes green whenever there is activity on your home IP network.

#### **POWER light:**

Steady green when

plugged in.

#### UPDATE BUTTON:

Initiates a iControl box to server uplink communication. Used when you need to manually update the iControl network with information.

#### DEVICE BUTTON:

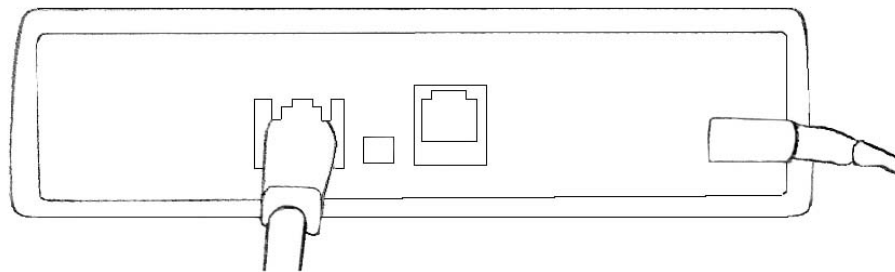
Can be used to enable the iControl box to discover a newly installed device.

### **iControl Box back panel**

As described in the Installation Guide, the iControl box **should not be plugged into power strips or wall outlets that are connected to or contain a surge protector or uninterruptible power supply.**

The rear view shows the Ethernet port with an Ethernet cable inserted, an insert for a reset button, a phone jack, and power connector with the power supply cable inserted. The reset button, marked as 'RST', is not functional today and will not be functional in the shipping product. The phone jack is not supported in Beta.

### **Rear View iControl Gateway**



Insert Ethernet Cable Here

Insert Power Supply Cable Here

## **3 Using your iControl System**

Your iControl System can operate in one of three modes: Home, Sleep or Away. You can set the mode in one of two ways: the Mode button on your Summary

page or via the 'Lock' and 'Unlock' buttons on your Keychain Remote Control.

*To change the mode via your Summary page.*

- 1 Navigate to the 'Mode' link shown in the Summary page menu bar.



- 2 Click on it. A new window appears and there will be a pointer next to one of the modes. 3 Select the mode to which you want to change your System.

*To change the mode from your Keychain remote.*

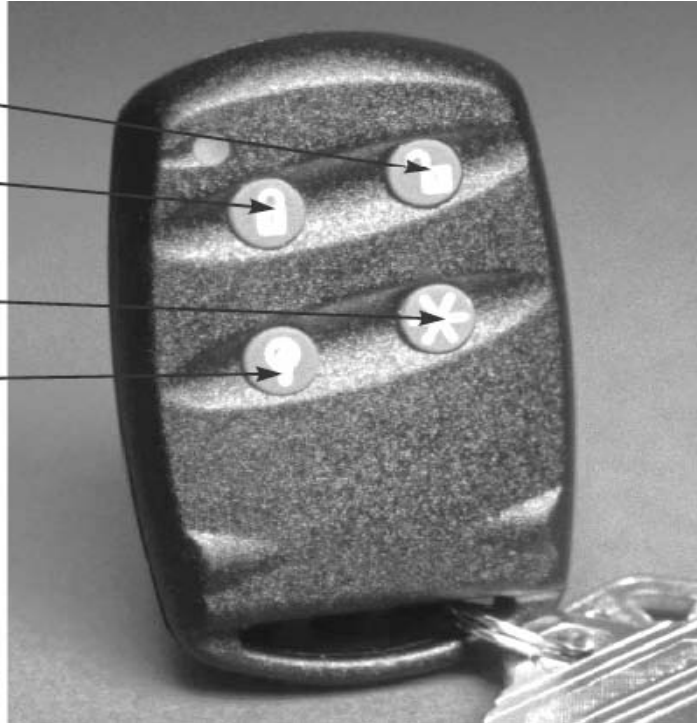
- 1 Click on the lock or unlock button while you are within a 100 foot (line-of-sight) to the area in your location where you installed your iControl box. The following picture shows the Keychain's lock and unlock buttons.

Unlock button  
Change to Home mode

Lock button  
Change to Away mode

Star button  
Press once to take a picture from  
your iControl camera.

Light bulb button  
Press once to turn on all the  
lights controlled by an iControl  
lamp module. Press again to  
turn them off.



### Change or Set Notifications

A notification is an email or SMS (Short Message Service also referred to as text messaging) message sent to your PC, PDA, or cell phone alerting you that a device recognized a change in your location. For example, a Motion Sensor may sense that someone has entered a room; a Door/Window Sensor may report that a door is open.

Here is an example of an email notification sent to 'brian@icontrol.com' regarding his office Motion Sensor detecting that someone occupied his office at 8:31PM on 10 July 2004.

**From:** alarm@icontrol.com  
**Subject:** Alarm Notification  
**Date:** October 7, 2004 8:31:36 PM PDT  
**To:** brian@icontrol.com

---

office motion sensor state at Beta 14 changed to Occupied at 2004-10-07 20:31:25

[Note to reader: the wording of an email notification will change for the shipping product from this cryptic style to proper grammar and composition]

You can assign notifications on a mode or device basis. In Home mode, you may

not want to receive notifications while someone is home. In Sleep mode and Away mode, you may or may not want to receive notifications. In Away mode, you may want to receive an email notification any time a device recognizes a change at your house. For example, every time a window or door opens, you can set notifications under the Notification tab to generate an email.

IN BETA, YOUR NOTIFICATIONS ARE PRE-ASSIGNED SUCH THAT IN AWAY MODE, YOU WILL RECEIVE AN EMAIL NOTIFICATION IF MOTION IS DETECTED OR IF A DOOR/WINDOW SENSOR GOES FROM CLOSED TO OPEN. You can change this preset notification as described later in this chapter.

Note: In the shipping product, users will be able to:

- assign different notifications for different sensor states in each mode
- attach a picture to their notification. They will be able to click on a picture and attach it to their email or text message notification

### Your default notification

While you were purchasing your iControl System, you were asked to provide an email or SMS address. This information was used to set your default notification. A default notification is the email or SMS address to which you chose to have your iControl System notifications sent. To see your default notification, click on the Notification tab. You will see a screen like this:



A customer named George purchased an iControl System. During his purchase on the iControl website, he provided his email address, George@yourISP.com. If you click on the word 'George', you will see the email or SMS address that

George provided during his purchase.

**Notifications - Security Alarm Default - Home Mode**

Description

Email  

George's email is shown here as he chose to have his notifications go to his email.

### **Change your default notification**

You can change your default notification. To do so,

- 1 Select the Notifications tab.
- 2 Select the mode (Home, Sleep, Away) that you want to change. Click on the name that you entered, in this case, George.
- 3 Here you have the option of changing the name of your notification. If you do not want to change it, click on the Cancel button. If you wish to change it, change it now by typing in a new name. Here the default notification in Home mode is now named 'Send email to Dad'. Click on the Add button.

**Notifications - Security Alarm Default - Home Mode**

Description

Email

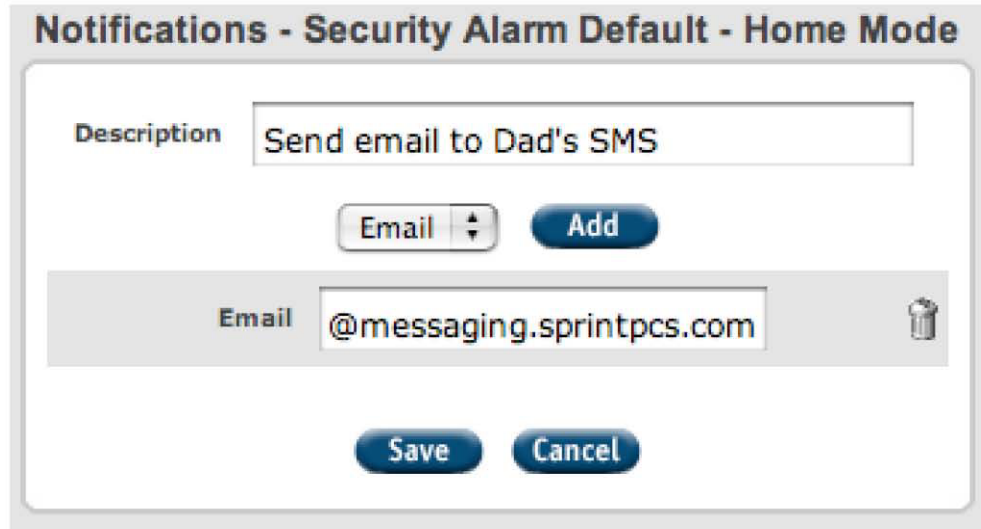
- 4 You may change your email address. Enter a new email address if you wish. If you do not wish to change it, click on the Save button.
- 5 You can add more email addresses. For example, you have set up your system to send an email when your children come home after school and you want both parents to receive an email. To add addresses, click on the Add button. Enter the additional email addresses.
- 6 To save, click on the Save button.

**Send your notification to your SMS (Short Messaging Service also called text messaging) address**

You may wish to have your notifications sent to your SMS address on your cellphone or PDA instead of your email address.

- 1 Click on the Notifications tab.
- 2 Choose which mode (Home, Sleep, Away) that you want to edit. Click on the notification name.

- 3 Rename your notification if you wish. Here we have named it 'Send email to Dad's SMS'.
- 4 Click on the 'Add' button.



- 5 Enter your SMS address. To receive an iControl notification via SMS, you need to enter your SMS address in a special way. Here are the formats for representative carriers:

Telecom carrier	<a href="#">Yourphonenumber@yourcarrier.net</a> or .com
Alltel	<a href="#">1112223333@message.alltel.com</a>
AT&T	<a href="#">1112223333@mobile.att.net</a>
Cingular	1112223333@mobile.mycingular.com
Metro PCS	1112223333#mymetropcs.com
Nextel	1112223333@messaging.nextel.com
Sprint	<a href="#">1112223333@messaging.sprintpcs.com</a>
T-Mobile	<a href="#">1112223333@tmomail.net</a>
Verizon	<a href="#">1112223333@vtext.com</a>
Virgin	1112223333@vmobl.com

Note to reader: These addresses are being revised.

- 6 Enter your SMS address.
- 7 To save, click on the Save button.

### Set different notifications for different modes

You can set different notifications for different modes. For example, in Home mode, you may want to send the notifications to your work email address. In Away mode, you may want emails sent to your personal email address.

To do so, go to the Notification tab and click on the Mode for which you wish to set a notification.





Tip: To delete an existing notification, select the Notification tab, and click on the mode from which you want to remove notification. Click on the trash can icon and click on the Save button.

The screenshot shows a web interface titled "Notifications - Security Alarm Default - Home Mode". It contains a form with the following elements: a "Description" label and a text input field containing "none"; an "Email" dropdown menu and a blue "Add" button; a grey horizontal bar containing an "Email" label, a text input field, and a trash can icon; and two blue buttons labeled "Save" and "Cancel" at the bottom.


### **Change or set automation**

Automation enables you to program your devices to take an action when another device recognizes a change. For example, you may want to take a picture when someone enters your front door while you are away.

In Beta, you can configure two types of automations: the iControl Camera takes a picture or the Lamp Module turns lights on or off.

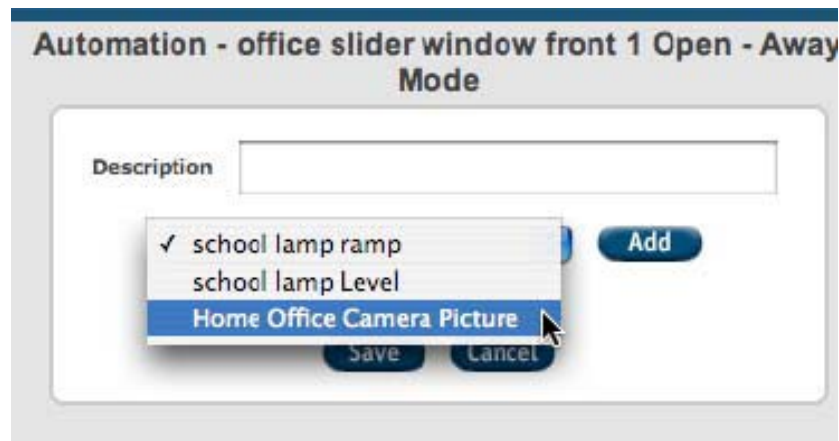
*To have the camera take a picture based on a device recognizing a change*

- 1 Go to the Summary page, then click on the Automation button.
- 2 In this example, we want the camera to take a picture when the Hall Motion Sensor detects a change when we are away. Go to the column 'Away' and the row entitled, 'Hall Motion Sensor'.

**Automation** 

	Home	Sleep	Away
Back door (large) Open	None	None	None
Back door (large) Closed	None	None	None
Hall motion sensor Occupied	None	None	Conf room camera Picture...
Hall motion sensor Empty	None	None	None
Front door (recessed) Open	None	None	None
Front door (recessed) Closed	None	None	None
Mail Box door Open	None	None	None
Mail Box door Closed	None	None	None
Garage door (large) Open	None	None	None
Garage door (large) Closed	None	None	None
<b>Remote controls operate the same in all modes</b>			
Keychain remote Lamp button on		Floor lamp Level...	
Keychain remote Lamp button off		Floor lamp Level...	
Keychain remote Star button		Wireless camera Picture...	
Keychain remote Lock button		Change Mode mode...	
Keychain remote Unlock button		Change Mode mode...	

3 Choose camera from the drop down menu.



4 Click the Add and Save buttons.

*To have the house lights turn on based on a device recognizing a change*  
 You can set lights to come on or off and at different levels when a device recognizes a change.

1 Go to the Summary page, then to Automation tab.

2 Choose the mode and device. In this example, we want the house lights to come on when the front door is open while we are away. Go to the column 'Away' and the row entitled, 'Front Door open' and click.

3 Choose the action you want to have occur from the drop down menu. Here we chose Lamp 1 level to turn on the lights.

4 Choose a lamp level from the drop down menu. Lamp levels can be on, off, or some percent of the lamp's brightness.



5 Click on Add and Save.



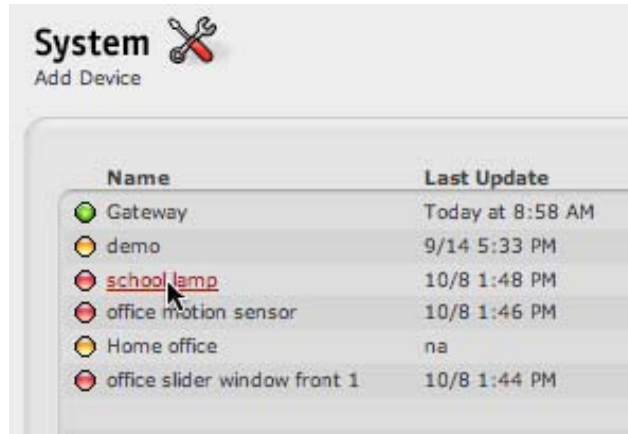
Tip: You can have different actions occur in different modes. In this example, the lights are to come on when the Front Door (large) was opened while the iControl System is set in Away mode. We did not set the lights to come on in Home mode as the lights would probably be on as friends and family are around.

### **Rename a Device**

iControl Networks, Inc. adds your device to your system before your Starter Kit is shipped to you. (If you purchase additional devices after buying your Starter Kit, you will need to add them to your system. See Chapter 9 Adding Additional Devices for instructions.) You may wish to rename them in your terms.

To rename your device,

- 1 Go to the System tab. Click on the name of device you wish to change. In the Name field, backspace over the old name to delete it and then type in the new name.
- 2 Click on the Save button.



## 4 Using your Camera

You can use your iControl Wired or Wireless Camera to see pictures (images) or live video from your location while you are away.

### Setting up your camera for pictures

- 1 Go to the System tab.
- 2 Navigate to the 'Add Device' heading under the tab heading on the left hand side of the page.
- 3 At the Add Device screen shown below, first choose the technology and then the type of technology from the drop down menus. Here we are adding a wired IP camera, so the technology is IP and the type is an Axis Network Camera Model 205.

**Add Device**

Technology: IP

Type: Axis Network Camera Model 205

Name:

ID:

**Add**

4 Create a name for the camera.

5 Enter the serial number from the back of the camera. The number should have the following 12 character format.

**S/N 00408C648CCD**

Do not enter the letters 'S/N'.

6 Click Add. You should now see the new camera in the System device list with a yellow dot next to it. The yellow dot indicates that it is installing. Wait a few minutes for the iControl Box to discover and configure the camera. Once the iControl box completed its communication, the yellow dot will turn green indicating that the camera is installed and operating. If you do not see a green dot within five minutes, refer to the Frequently Asked Questions (FAQ) section of this manual for more assistance.

You can now see a thumbnail picture from your camera. Go to your Summary page and look under Pictures. Click on the thumbnail to see an expanded view. You can also manually take pictures now by using the QuikControl button. Additionally you can create automations using the camera. See Chapter 3 in this manual for more details.

### **Setting up your camera for video**

This is an advanced feature of the iControl System. You should be familiar with port forwarding functionality on home network routers before attempting to implement this feature. You must first have your camera set up for pictures. To set up for video,

- 1 Go to the Summary page.
- 2 Under Pictures, click on the picture thumbnail from the camera for which you want to enable video. An expanded window will open.
- 3 Click on menu item, Live Video, shown below. The menu item shown here is inside of the expanded picture window.

## Home Office Camera - Today at 9:35 AM

Thumbnails | Live Video | Next >>

- 4 You will then see the following dialog box. Record the IP address and port number shown in the window (Here the IP address is 192.168.1.102 and the port number is 80).

### Camera Not Accessible

Unfortunately, we are not currently able to access video from the camera labeled "server door cam"

Please verify the following:

- Make sure that your camera is plugged in and powered up.
- Verify that the network cable is connected to both the camera and to your router or distribution hub.
- Check that your router's port forwarding settings are correct.
  - TCP requests to port 80 must be forwarded to 192.168.1.102
  - [Click here](#) for help with router port forwarding
  - [Click here](#) to go to your router's home page
- To test your router's settings after you make changes press the following button

[Test Port Forwarding](#)

At this point you need to configure your location's router to enable port forwarding. LEAVE the window shown above open, as you will need it to finish your work. Go to the next section.

### Setting up port forwarding

To set up your camera to show video, you will need to establish port forwarding for your camera. Port forwarding enables your home router to pass streaming video through so that it can be accessed from your iControl Summary page.

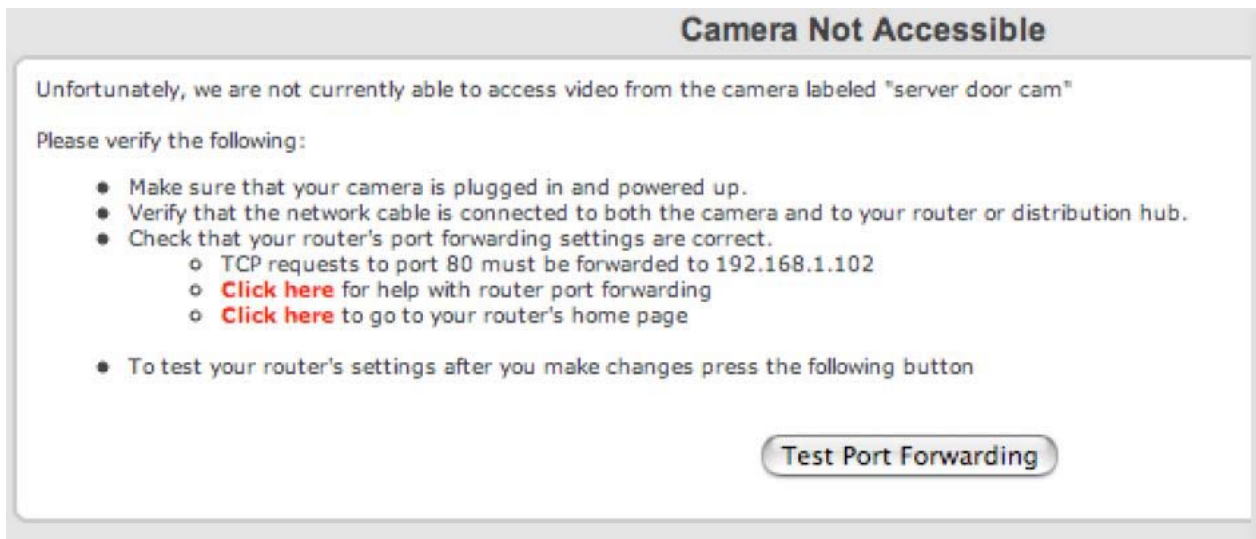
To set up port forwarding, you will need the router's user name and password. (Check your router's user manual as you may have recorded the password and user name there. Also, you may have used the default user name and password

provided in the user manual.)

### *Setting port forwarding for Linksys router*

Here are the steps for a typical Linksys router. Different models of Linksys routers may have different screens and you should consult your Linksys user manual for more information.

- 1 Select 'Click here to go to your router's home page' from the 'Camera Not Accessible' window.



You will then be presented with the router administration page. Enter your user name and password.

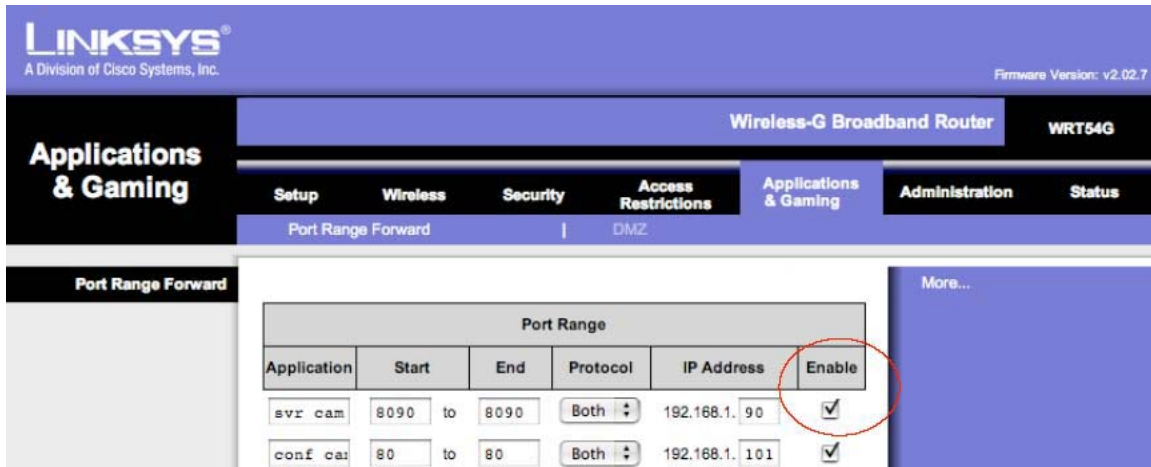
- 2 On the administration page, select the tab named Application & Gaming from the menu bar.



- 3 On the Applications & Gaming page, in table entitled, Port Range, enter the application name as 'camera'.
- 4 Enter the Start port (obtained from the steps in the prior section, *Setting up*

*your camera for video.*) in the Start field. In this example it is 80. Enter the end port in the End field as 80. The Start port and end port are the same in this example.

- 5 Select the protocol as 'Both' in the Protocol field.
- 6 Enter the IP Address obtained from the steps in the prior section, *Setting up your camera for video*, in the IP Address field.
- 7 Check the check box under the heading, Enable.



8 Select the Save Settings button to save your entries.



- 9 Close your browser window and return to your iControl Summary page. Select the thumbnail of the camera that you have enabled for video. You will be presented with an expanded window. Select the menu item, Live Video, from the menu bar at the top of the window.
- 10 At this point you should see live video. If you do not, you will again be presented with a dialog box entitled, Camera not Accessible. Click on the button, Test port forwarding, to test your port forwarding work. If it does not test properly, email [beta@incontrol.com](mailto:beta@incontrol.com).

[Note to reader: In the dialog box, 'Click here to get help with your router' is not available in Beta]

- 11 If you want to review your settings, navigate to your system tab, select the camera that you would like to review and click on advanced settings. You should see a dialog box similar to this:



Name:

<< Advanced Settings

IP Address:

Port:

Username:

Password:

*Setting port forwarding for a NetGear router*

Here are the steps for a typical NetGear router. Your NetGear router screens may be different from those shown here and you should consult your NetGear user manual for more information.

- 1 Select 'Click here to go to your router's home page' from the 'Camera Not Accessible' window. You will then need your user name and password to access the administration page.
- 2 On your administration page, there will be an item called port forwarding under Advanced in the left hand navigation bar that you will select to enter the necessary information.

Here is an example of the portion of the setup screen for a NetGear router showing

	#	Service Name	Start Port	End Port	Server IP Address
<input type="radio"/>	1	Camera	80	80	192.168.0.7
<input checked="" type="radio"/>	2	Gerry	4376	4376	192.168.0.2

port forwarding already configured for an iControl camera.

To implement port forwarding, 1 Select the button, Add Custom Service. 2 Create a Service name. In this example the Service name is Camera. 3 Enter the Start port. In this example, it is 80. 4 Enter an End port. In this example, it is 80. 5 Enter the IP address obtained by following the instructions in prior section entitled,

*Setting up your camera for live video.* 6 Save your changes and close the screen as shown on the router's port forwarding setup screen. 7 Close your browser and return to your iControl Summary page. Select the thumbnail of the camera that you have enabled for video. You will be presented with an expanded window. Select the menu item, Live Video, from the menu bar at the top of the window. 8 At this point you should see live video. If you do not, you will be presented with a dialog box entitled, Camera not Accessible. Click on the button, 'Test port forwarding', to test your port forwarding work. If it does not test properly, repeat the port forwarding process.

*Entering the camera password and ID for Internet Explorer*

For some versions of Internet Explorer, you may need to enter the camera user name and password the first time you attempt to view video from within an Internet Explorer browser page. You will need to enter this information if Internet Explorer presents you the dialog box shown below when you select the menu item, Live Video, from the expanded picture thumbnail in your iControl Summary page.

Connect to 67.125.72.226

/

User name:

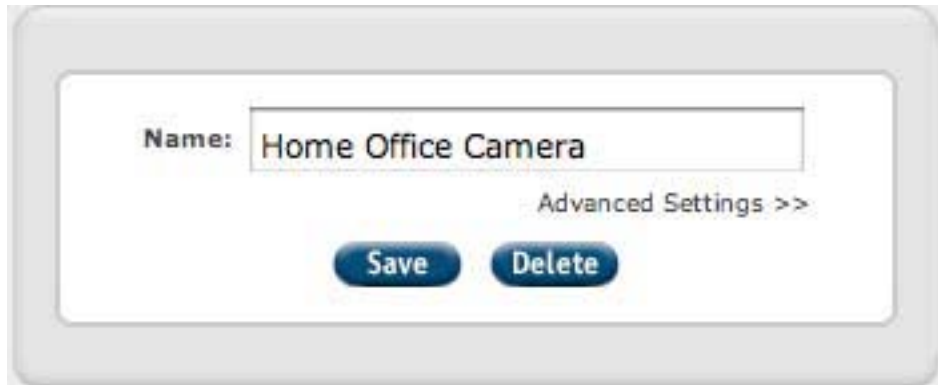
Password:

Remember my password

OK Cancel

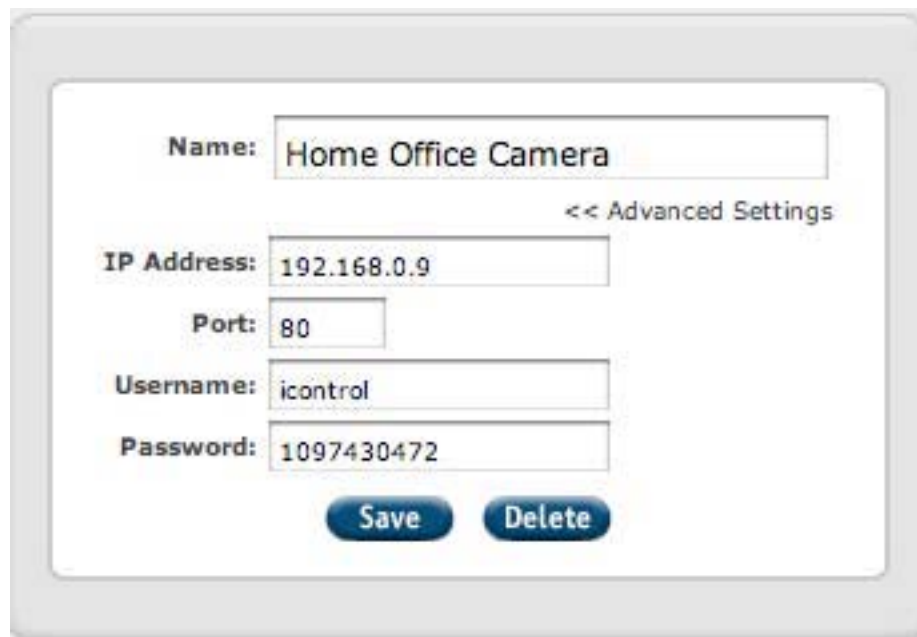
To obtain the iControl Camera user name and password,

- 1 Go to the System tab
- 2 Select the Camera from which you want to see live video
- 3 Select the heading, Advanced Settings, from the dialog box shown below



A screenshot of a web-based dialog box for camera configuration. It features a text input field labeled "Name:" containing the text "Home Office Camera". To the right of the input field is a link that reads "Advanced Settings >>". Below the input field are two blue buttons: "Save" and "Delete".

4 Write down the Username and Password shown in the dialog box shown below. In this example, the Username is iconcontrol and the Password is 1097430472.



A screenshot of the same web-based dialog box, but with the "Advanced Settings" section expanded. The "Name:" field still contains "Home Office Camera". Below it, the "IP Address:" field contains "192.168.0.9", the "Port:" field contains "80", the "Username:" field contains "iconcontrol", and the "Password:" field contains "1097430472". The "Advanced Settings" link now reads "<< Advanced Settings". The "Save" and "Delete" buttons remain at the bottom.

5 Return to the Internet Explorer dialog box and enter the username and password. Again, the username and password entered here is for the camera. Again, your iControl System password and user ID is different from this one and is not used here.



icontrol 1097430472

- 6 Check the box, 'Remember my password'.
- 7 Click on the button, OK, to close the window.
- 8 Quit Internet Explorer.
- 9 Reopen Internet Explorer and log on to [www.icontrol.com](http://www.icontrol.com) and navigate to the Summary page. Click on the picture thumbnail to bring up an expanded view and then select 'Live video'.

#### *Setting port forwarding for other routers*

There are many routers in use today. The steps for implementing Port Forwarding on D-Link and Belkin routers may be different but the same tasks need to be accomplished:

- . • Access your router's administration page
- . • Create a service called 'camera'
- . • Enter a start and stop or end port
- . • Enter the IP address obtained earlier (see Step 4 "Setting up your camera for video" in Chapter 4 of your User Guide)
- . • Return to your iControl Summary page (see Step 9 under the heading "Setting Up Port Forwarding" in Chapter 4 your User Guide).

For support in setting up port forwarding for other routers, please email [support@icontrol.com](mailto:support@icontrol.com).

### *Adding AXIS Media Control ActiveX control for your Camera*

If you are presented with the following dialog box, you will need to install an ActiveX control into your browser so that you can view live video from within an Internet Explorer page.

is site might require the following ActiveX control: 'AXIS Media Control' from 'Axis Communications AB'. Click here to instal...

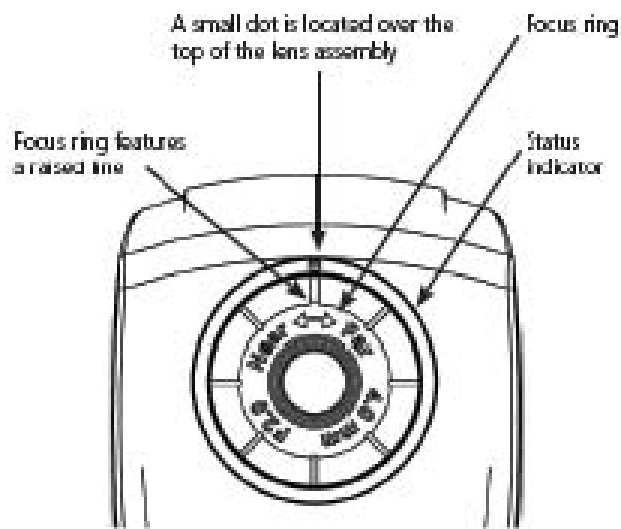


To install the necessary ActiveX control entitled, AXIS Media Control, follow the instructions at the top of the dialog box as shown in this example that begin, "This site might require the following ActiveX control..." to click and install it.

### **Focusing your camera**

If the images on the Summary page or the expanded picture window are unclear, use the focus ring to adjust the lens.

- 1 Navigate to the Summary page. Click on the thumbnail of the camera that you want to focus. You will be presented with an expanded window.
- 2 Walk to the front of the camera.
- 3 Adjust the focus ring until the raised line is aligned with the dot above the lens. The focus ring is a ring encircling the camera lens. The camera may be in focus now.
- 4 Return to the Summary page, take another picture and see if the focus is satisfactory.
- 5 If necessary, adjust the ring again and go to the web site to check again.



### **Seeing pictures from your location**

You can see pictures from your camera remotely in one of four ways.

#### *Viewing from the Pictures area on the Summary page*

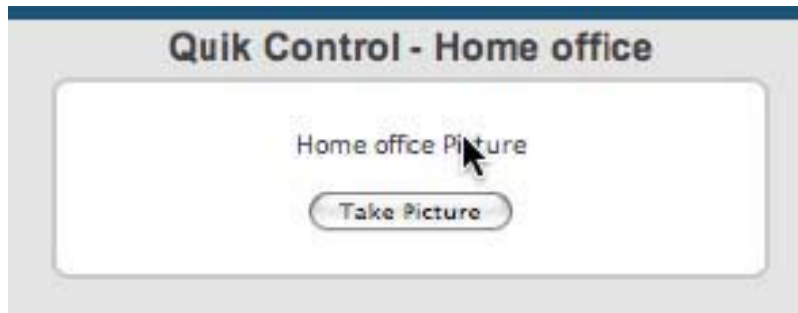
1

view from the Pictures area indicated by the Picture icon. 2 You will be presented with an expanded image. 3 At the bottom of the window, you can select the heading, Take a new picture now.



#### *Viewing by using the QuikControl feature on the Summary page*

- 1 Navigate to the Summary page. Go to QuikControl button in the upper right hand portion of the page.
- 2 Click on the button to show a drop down menu. Select the name of the camera, in this case it is called 'Home office' to obtain a picture. A new window will appear as shown below:



- 3 Click on Take Picture button.
- 4 You will then be brought back to Summary page where an item 'Home office Picture' will be listed in the Pending Updates window. At the next iControl System update (the time of which is shown in the Pending updates window), the picture will be taken.

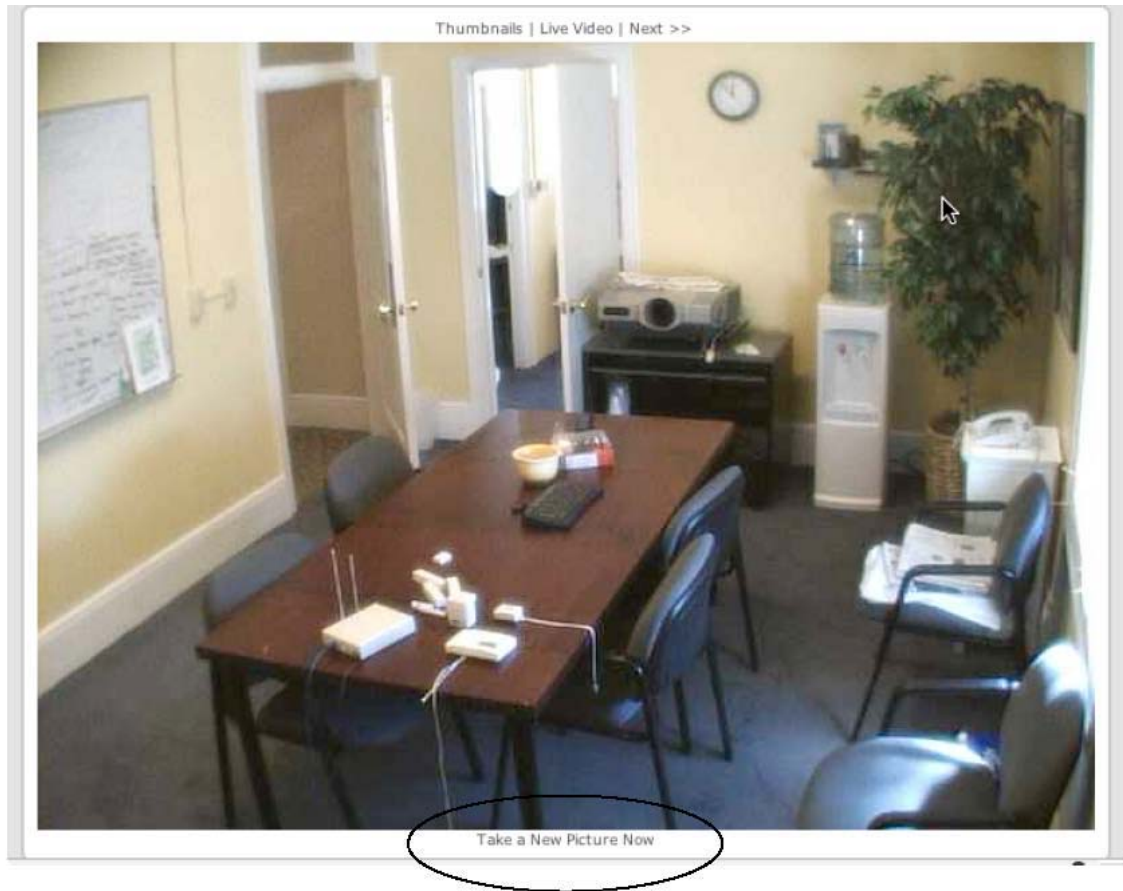
#### *Viewing from the Details tab*

- 1 Go to the Details tab. On the Details page, you will see a thumbnail from each of your cameras. Select the one you want to see.

#### *Viewing by using the "Take a picture now" link*

This option is only available if you have properly set up port forwarding for a given camera

- 1 Click on the desired camera's thumbnail picture to expand the image.
- 2 At the bottom of the window, click on the heading, "Take a picture now"
- 3 The camera will take a picture and it will be immediately displayed in the open window.



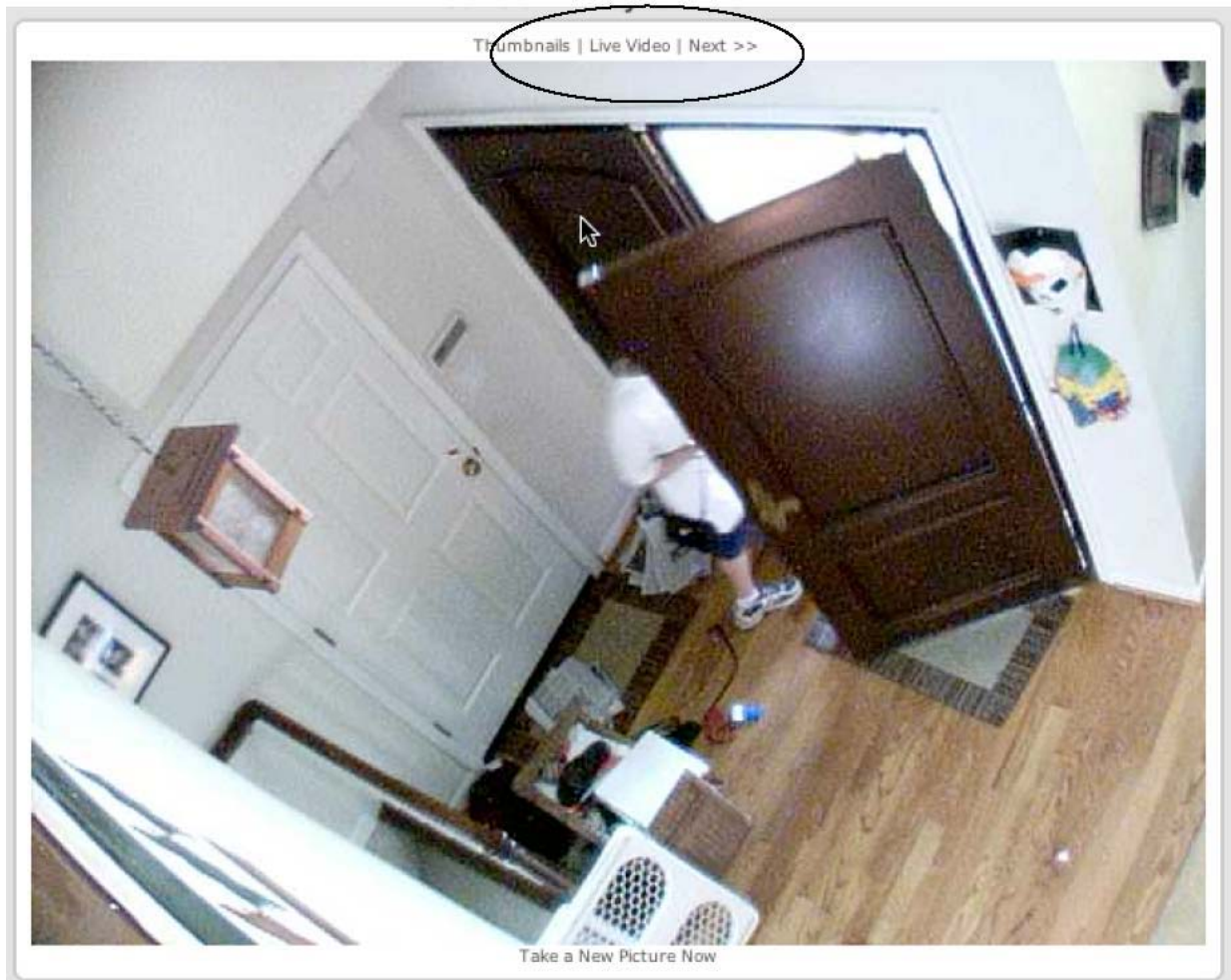
### **Seeing live video from your location**

If you have configured your camera to provide live video from your location, you can see live video from your location. To do so,

- 1 Go to the Summary tab.
- 2 Under the heading, Pictures, click on the picture thumbnail from the camera that you want to see video. An expanded picture will appear.
- 3 Click on the heading, Live Video and you will be brought to a screen displaying live video from your camera. Note, you may need to wait a few moments for the video to appear.



Screen shot from clicking on a picture in Pictures in Summary Page



## 5 Using your Door/Window Sensor

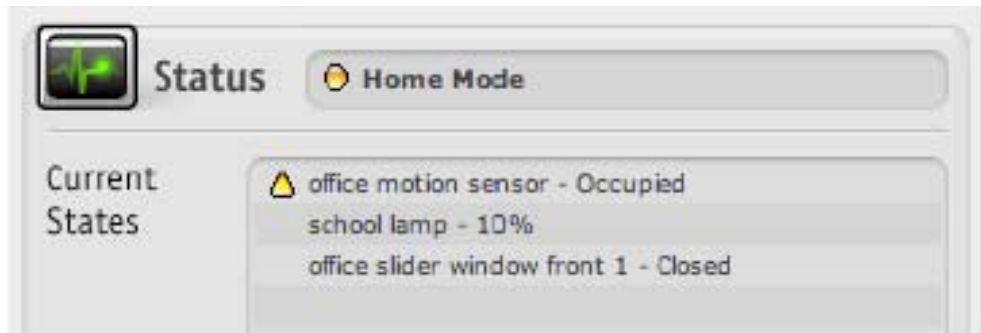
Once you have installed a Door/Window Sensor in your house and it appears in your iControl Summary page, you only have to activate the sensor once to make it operational. To do so, open and close the door or window once to tell your iControl box whether it is initially open or closed. You do not need to make any other configuration changes or take any other set up actions.

### Check on your Door/Window Sensor

The following describes how to see the status of your Door/Window Sensor.

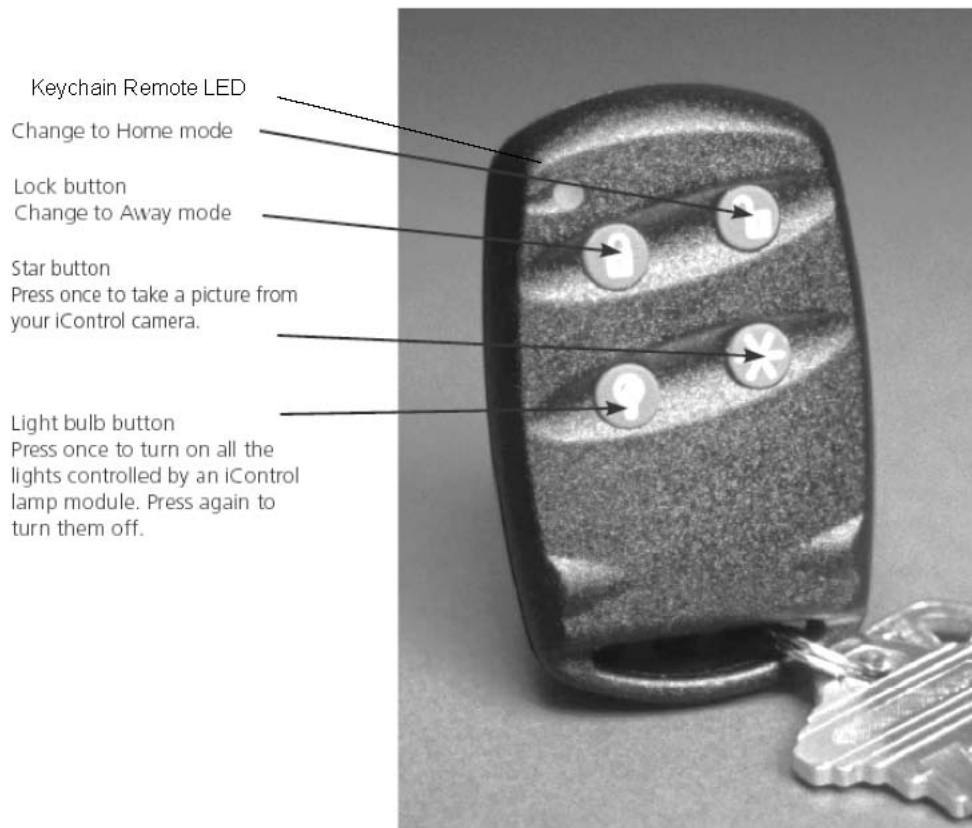
- 1 Navigate to the Summary page.
- 2 Go to the Status window. In the image shown below, the Door/Window Sensor is named 'office slider window front 1' and its state is closed. This Door/Window Sensor recognizes that the office slider window is

closed.



## Using your Keychain Remote Control

Through your iControl Keychain Remote Control, you can control selected functionality in your iControl System. For example, you can click on the Light Button and turn on the lights as you approach your house. The Keychain Remote has a range of approximately 100 feet (assuming a clear line-of-sight to your iControl box).



### How your Keychain Remote works

The buttons on your Keychain Remote Control are pre-configured with the functionality as described in the captions shown above.



Tip: when pressing a button on the Keychain Remote Control, it is important to hold the button down until the Keychain Remote LED (see above diagram) flashes green. **In contrast to a car remote control that activates immediately, the iControl Keychain Remote Control takes a few moments to communicate with your iControl box the green light flashes.**

Your iControl System page will show that you have a Keychain Remote Control as part of your system. iControl Networks, Inc. sets up your Keychain Remote as part of your system before it is shipped to you.

You can purchase additional Keychain Remote Control devices as you may want a device for each member in the family. To do so, go to the [www.icontrol.com](http://www.icontrol.com) website.


## Customizing your Keychain Remote Control

You can customize the button preferences on your Keychain Remote. Button preferences enable you to choose which actions your Keychain Remote Control buttons invoke. You may want to take a picture, turn on a light, or change the iControl box's mode to sleep when you leave your location.

## Modifying the actions for your keychain remote control buttons

Let's say we have a Keychain named 'Keychain Remote' and when Mom presses the Star button, we want the house camera to take a picture. Instead, she wants the Start button to change the system mode to Sleep.

- 1 From the Summary page.
- 2 Click on the Automation tab. Scroll down to 'Keychain Remote Star'. Go to the 'Sleep' column.

**Automation** 

	Home	Sleep	Away
Back door (large) Open	None	None	None
Back door (large) Closed	None	None	None
Hall motion sensor Occupied	None	None	Conf room camera Picture...
Hall motion sensor Empty	None	None	None
Front door (recessed) Open	None	None	None
Front door (recessed) Closed	None	None	None
Mail Box door Open	None	None	None
Mail Box door Closed	None	None	None
Garage door (large) Open	None	None	None
Garage door (large) Closed	None	None	None
<b>Remote controls operate the same in all modes</b>			
Keychain remote Lamp button on		Floor lamp Level...	
Keychain remote Lamp button off		Floor lamp Level...	
Keychain remote Star button		Wireless camera Picture...	
Keychain remote Lock button		Change Mode mode...	
Keychain remote Unlock button		Change Mode mode...	

- 3 Click on the value in that column, in this example, 'None'.
- 4 Click on the drop down menu and choose 'Change Mode'.
- 5 Select the Add button.
- 6 Select the desired mode in the newly added line.
- 7 Click the Save button.

V  
e  
r  
s  
i  
o  
n  
2.  
2  
M  
a  
r  
c  
h  
2  
0  
0  
5  
i  
C  
o  
n  
t  
r  
o  
l  
C  
o  
n  
f  
i  
d  
e  
n  
t  
i  
a  
l

p  
a  
g  
e  
3  
4

T  
i  
p  
:

Y  
o  
u  
r

K  
e  
y  
c  
h  
a  
i  
n

Remote works the same across all modes, Home, Sleep and Away.

### **Customizing your Light Button**

You can set the light brightness with your Light button (the button with the light bulb on it). So for example, when you press the Light button, not only will the lights in your house controlled by a Lamp Module turn on but they will turn on to pre-set brightness.

Let's add this functionality to 'Mom Keychain'.

- 1 Go to the Automation tab.
- 2 At the Security Automation window, go to the column labeled 'Sleep' and the row entitled, Mom Keychain Remote Lamp button on. Click on the word 'none'.
- 3 Choose Lamp 1 level from the drop down menu. Click Add.
- 4 Click next to 'Lamp 1' level, the 'on or off' button. Choose a lighting level. Enter a phrase in the Description field that describes how you configured the button such as "Turn on house lights".
- 5 Click on the Save button to save your changes.



Tip: You can set any button on a Keychain remote control to perform any available action (turn on lights for example). We have presented some of the alternatives for you in this manual.

# 7 Using your Lamp Module

## Set the brightness level

You can set the brightness of the lights that are controlled by a Lamp module. To do so, 1 Go to the Summary page. 2 Click on the QuikControl button on the blue menu bar. 3 Click in the Brightness field to show a drop down menu.

Choose a brightness level such as 100%. This means the light will be as bright as it can be. Click on the button labeled 'Set'. 4 The change in brightness level will now be displayed in the Pending window and your iControl System will update the lamp at the time shown in the Pending window.



Tip: The Lamp Module can only control lights using 40w to 300w incandescent light bulbs. It cannot control other types of bulbs such as florescent lights. Also, it is not recommended for 3 way lights or lights controlled by 3 way wall switches.

## Control your Lamp Module

The Lamp Module can be turned on and off in one of three ways:

- 1 Press the Light button on your Keychain Remote once to turn any light s controlled by the Lamp Module on or off. If the light is on, pressing the Light button twice quickly will turn it off. Likewise, if it is off, pressing the button once will turn it on.
- 2 Using QuikControl. Go to your Summary page and click on the QuikControl button. One of the items in the drop down menu will be your Lamp Module. Select the Lamp module to open its control dialog box. Select the brightness level you want and click the Set button. In a few minutes, the iControl box will talk to the Lamp module via iControl's servers. Then the Lamp Module will turn on to the selected brightness level.
- 3 If you have added turning lights on or off to an automation such as turning on the lights if a Motion Sensor recognizes a person entering the Sensor's monitored area. To set up automation, go to Chapter 3 under Change or set automation.

### **See the status of your Lamp Module**

- 1 Go to the Summary page. In the Status window, look for your Lamp module. Scroll down if necessary to see it listed.
- 2 The lamp's brightness level will be displayed.

## **8 Using your Motion Sensor**

### **See the status of your Motion Sensor**

To see the status of your Motion Sensor,

- 1 Go to the Summary page. In the Status window, look for the name you gave your Motion Sensor. Scroll down if necessary to see it listed. A yellow triangle next to the name of the Motion Sensor indicates that it has recognized a change such as a person entering the room. See Chapter 1 Getting Started for more information.

### **Occupied and Empty states**

The term 'Occupied' means that the Motion Sensor has detected a person moving in the area that it monitors over 40 pounds in weight. The term 'Empty' means that the Motion Sensor has not detected a person moving into the area it monitors for several minutes.

If a person enters a monitored area, the Motion Sensor immediately recognizes the change and reports that the area is occupied through your iControl box which in turn displays the information on your Summary page.

If a person leaves the monitored area, the Motion Sensor 'waits' a few minutes before reporting that the area is empty. This delay is to allow the Motion Sensor to confirm that the person has left the room. The yellow triangle status icon disappears when the status changes to 'empty'.

## **9 Adding Additional Devices**

This chapter describes how to add additional devices to your iControl System. The basic steps are shown below:

- 1 Write down the serial number, sometimes identified as a DL or S/N number or ID number, of your device. Here are examples for the devices available in the Starter Kit to help you confirm that you are recording the appropriate serial number:



Device	Total count of numbers and letters in the serial number	Sample serial or ID number
IControl box	12	006035019f62
Lamp module	12	120013752100
Camera	12	00408c6675d2
Motion Sensor	6	2a34c1
Door Window Sensor	6	0d5aa8
Keychain Remote	6	AA64DC
Thermostat	5	BD7DE



Tip: Letters can be entered in upper or lower case.

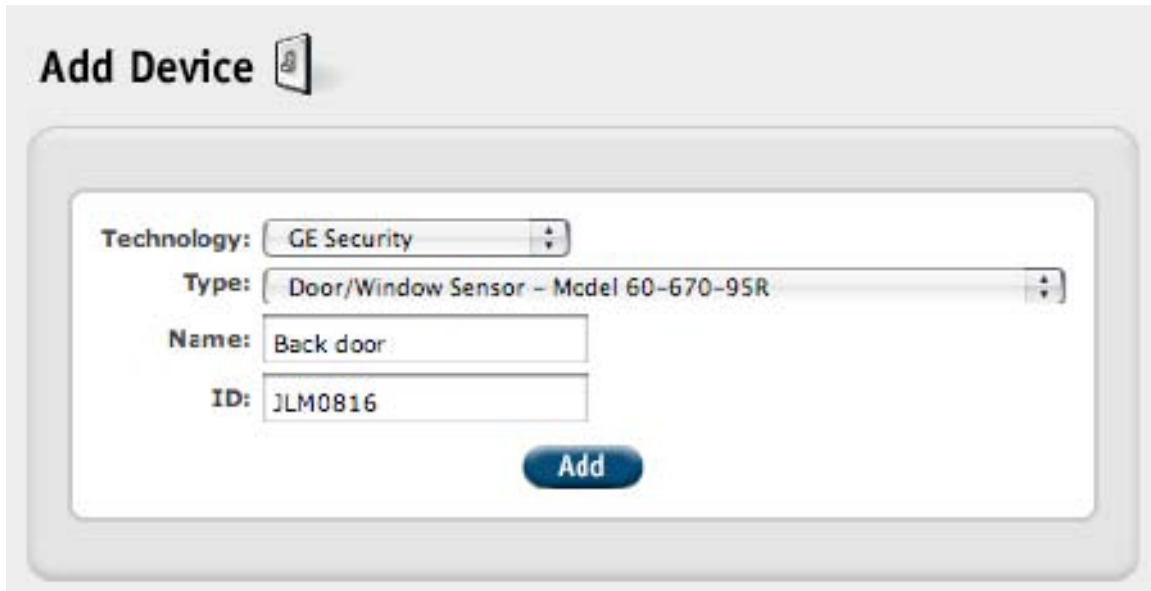
2 Navigate to the System page


3 Select the Add Device heading

4 Choose the technology, then the type from the drop down menu. For this Starter Kit, here is the list of devices and associated technologies:

Device	Technology	Type
Camera - Wired	IP	Camera – Wired – Model Axis 205
Camera – Wireless	IP	Camera – Wireless – Model Axis 206
Door/Window Sensor	GE Security	Door/Window Sensor – Micro - Model 60-688-95
Keychain Remote	GE Security	Keychain Remote Control 4-Button - Model 60-659-95R
Lamp Module	LonWorks Powerline	Lamp Module – Model 6101-0000
Motion Sensor	GE Security	Motion Sensor Model 60- 807-95R
Thermostat	GE Security	Thermostat – Model 60-909-95

- 5 You can give the device a name such as hallway light, back door light, office camera, Dad's keychain remote, or hallway watcher for a motion sensor.
- 6 Enter the identifier in the ID field. Here is an example of adding a Door/Window Sensor



**Add Device** 

Technology: GE Security

Type: Door/Window Sensor - Model 60-670-95R

Name: Back door

ID: JLM0816

**Add**

- 7 Click on the Add button to add the device to your iControl System
- 8 You will receive a confirmation in the Status screen that you have successfully added the device.
- 9 You will be returned to the System page where you will see the new device. A yellow circle will be adjacent to the device name indicating that the system is still installing that device. You can obtain additional information about any device by clicking on its name. If you click on the screen, you will see a similar table to that shown below. Here is an example of a camera is being installed.



### *Description of the colored icons*

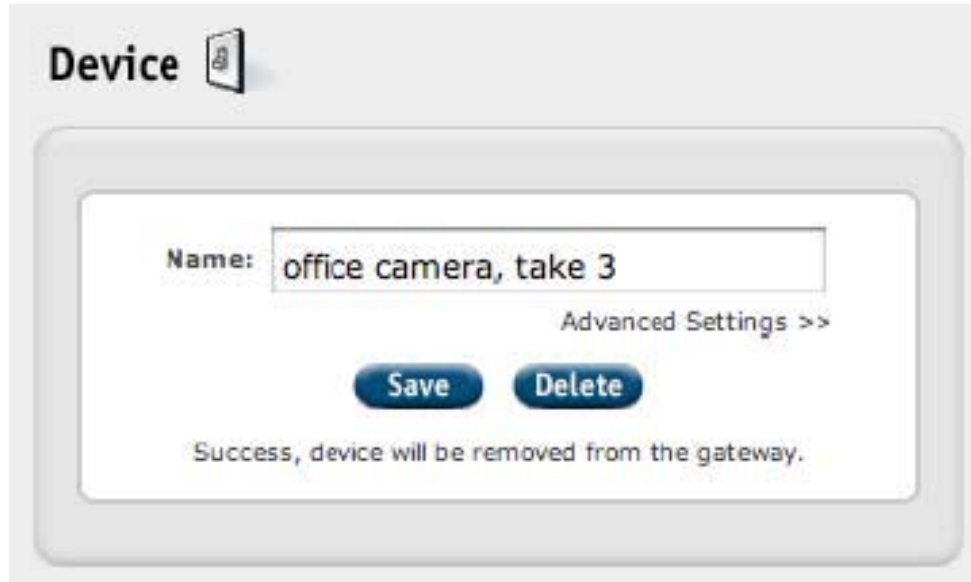
Besides the yellow circle, you will see other colored icons next to each device listed in on the System page. Here is a definition of what each icon means.

Colored icon	Status
Green circle	Device working and no changes recognized
Yellow triangle	Any of these states: Device working and recognized a change; Device undergoing installation; Device status unknown because the iControl box is disconnected.
Red circle	Device off line
Yellow circle	iControl box installing a device. Only seen on when you click on System and then on a device listed on that page that has a yellow circle.

### **To Delete a device**

To delete a device, follow these steps:

- 1 Navigate to the System tab.
- 2 Choose a device by clicking on the name of the device that you wish to delete.
- 3 The following window will appear. Click on the delete button. If you successfully delete the device, the message 'Success, device will be removed from iControl box.' will appear in the window.



## 10 Frequently Asked Questions

### Camera

How do I reset my camera?

If for some reason you need to reset your camera, follow these steps:

- 1 Disconnect the power cord from your camera
- 2 Press and HOLD the control button (a little black pin) next to the network indicator on the back of the camera. Reconnect the power cord while holding the black pin down
- 3 When the Status light turns yellow (within 5 to 10 seconds), release the button
- 4 When the Status light turns green, the camera is reset to the factory settings. The status light may take up to 1 minute to turn green.

What is the camera's resolution?

It has three different resolutions: 640x480, 320x240, 160x120. In Beta, all pictures are taken at 640x480 and all video is presented at 320x240.

What is the camera's frame rate?

Up to 30 frames per second

My picture is fuzzy. What do I do?

See Chapter 4 on how to install your camera for details on focusing your camera.

Will port forwarding let viruses into my network?

No.

Will other people be able to see what my camera sees?

No. They will not have the unique IP address, user ID, and password to access your camera.

Why don't I plug my iControl Camera into my iControl box?

Your camera is an IP device and can talk to the iControl network over the Internet on its own.

Where are the pictures and video from the iControl Camera stored?

The pictures are stored on the iControl network servers. The video is not stored but is delivered directly from the camera to your iControl Summary page.

Does iControl save my video?

No.

Can iControl spy via my camera?

iControl has strict security and privacy policies to prevent the potential for spying via your camera.

Will the Camera use an Ethernet port on my router?

Yes. It will require a physical port on your router. If you have a four port router, it will use one of the four ports.

Keychain Remote Control

What are the default buttons? Unlock Button: Change to Home mode Lock Button: Change to Away mode Light Button: Press once to turn on all the lights controlled by a lamp module. Press again to turn them off. Star Button: Take a picture

Motion Sensor How do I test my motion sensor?

- 1 Remove sensor from mounting plate, then reattach. You have 60 seconds
- 2 Walk across room and wait for sensor light to turn on
- 3 Stop, stand still and wait for sensor light to turn off.
- 4 Repeat Steps 2 & 3 until entire area has been tested
- 5 Leave the room for at least 60 seconds. After 60 seconds without motion, walk test mode time expires and the light on the sensor no longer activates when motion is detected.

Will the Motion Sensor sense my pets?

No for pets less than 40 pounds. This also means that it will not sense children less than 40 pounds.

## **11 Terms and Conditions, Warranty Information, and More**

This chapter is in development

iControl Privacy policy The written policy will be available when the product is shipping and will be provided in this section as well as on the website where the customer can see access it during the purchase process.

FCC Compliance

NOTE: This equipment has been tested and found to comply with the limits for a Class B digital device, pursuant to Part 15 of the FCC Rules. These limits are designed to provide reasonable protection against harmful interference in a residential installation. This equipment generates, uses, and can radiate radio frequency energy and, if not installed and used in accordance with the instructions, may cause harmful interference to radio communications. However, there is no guarantee that interference will not occur in a particular installation. If this equipment does cause harmful interference to radio or television reception, which can be determined by turning the equipment off and on, the user is encouraged to try and correct the interference by one or more of the following measures:

- Re-orient or locate the receiving antenna.
- Increase the separation between the equipment and receiver.
- Connect the equipment into an outlet on a circuit different from that to which the receiver is connected.
- Consult the dealer or an experienced radio/TV technician for help.

Modifications made to the iControl Gateway, Keychain Remote, IP Camera, Motion Sensor, Door Window Sensors and associated sensors unless expressly approved by iControl, could void the user's authority to operate the equipment.

The term "IC:" before the radio certification number only signifies that Industry Canada technical specifications were met.

## Appendix A Battery Maintenance

iControl box No battery maintenance is required as it does not contain a battery.

iControl Wired Camera No battery maintenance is required as it does not contain a battery.

iControl Door/Window Sensor The Sensor (the larger module of the two—sensor and magnet) requires a 3 VDC battery and is designed for long battery life. To change the battery, follow these steps:

- 1 Remove the cover from the base plate by using a pen knife or similar tool to pry them apart.
- 2 Slide out the battery and replace it with a new one.

iControl Lamp Module No battery maintenance is required as it does not contain a battery.

iControl Motion Sensor The motion sensor uses 2 AA batteries and is designed for long battery life. To change the battery, follow these steps:

- 1 Open the Motion Sensor via the sensor body button and pull the sensor body away from the mounting plate. Most of the motion sensor is now removed from the mounting plate.
- 2 Press the tabs at the top and bottom locations and pull the sensor face plate off of the sensor's body.
- 3 Replace the batteries.
- 4 Replace the sensor body and face plate.
- 5 Go to the System tab to see if it shows the device.

iControl Keychain Remote Your iControl Keychain Remote battery is designed to last several years. However if you need to change the battery, follow these steps:

- 1 Turn over your Keychain Remote. Remove the screw on the back and then the back cover.
- 2 Insert a 12 volt alkaline battery. Match the '+' and '-' markings on the inside of the battery compartment to the battery.
- 3 Reattach the cover.
- 4 Test the Keychain Remote.

Note: Please dispose of your battery in accordance to local regulations.