



# INSTANT SWITCH

INSTALLATION AND SETUP GUIDE

iDEVICES SMART HOME SOLUTIONS

## REQUIRES

- A Compatible iDevices® Product
- iDevices® Connected app
- Controlling This Product Requires An iPhone, iPad, Or iPod Touch With iOS 8.1 Or Later
- Android™ 4.3+ Device With Bluetooth® Technology

## WHAT'S INCLUDED

- iDevices® Instant Switch With CR2032 Battery (Pre-Installed)
- iDevices® Faceplate
- Includes Command® Strips from 3M (1)
- Ground Wire Assembly

## TOOLS NEEDED

When installing into a gang box, you will need the following tools:


- Philips Screwdriver
- Flathead Screwdriver

## RATINGS

3 VDC, 5.4mA

Replacement Battery: CR2032

- The iDevices® Instant Switch must be installed in a manner that conforms to all applicable national, state, and local building codes.
- When installing with Command® Strips from 3M, do not install above a bed, onto wallpaper, or outdoors.
- The iDevices® Instant Switch is intended for dry, indoor use only.
- Ambient operating conditions: 32° F to 104° F (0° C to 40° C), 0-90% humidity, non-condensing.
- The iDevices Instant® Switch uses 1 CR2032 coin cell battery. Do not use a rechargeable battery. Using an improper battery may damage the iDevices® Instant Switch. Please dispose of this battery at a recycling facility. Contact your local waste disposal provider to find a recycle center location nearest you.

 **CAUTION:** Risk of explosion if battery is replaced by an incorrect type. Dispose of used batteries according to the instructions.

# BEFORE YOU START

- Visit our YouTube channel for tips on installation and setup:  
[www.YouTube.com/User/iDevicesInc](http://www.YouTube.com/User/iDevicesInc)
- Wherever possible, install the iDevices® Instant Switch in a non-metal gang box and use a non-metal/metallic faceplate, as metal gang boxes and faceplates can decrease the Bluetooth® signal strength.
- Check that your mobile device is compatible with the iDevices® Instant Switch at [iDevicesinc.com/Compatibility](http://iDevicesinc.com/Compatibility)
- It is YOUR responsibility to be sure that products are installed in accordance with applicable building codes. Check with your local building office if you have questions.

- The iDevices® Instant Switch requires an existing iDevices product to function. Find additional products at [iDevicesinc.com/Store](http://iDevicesinc.com/Store)
- Download the free iDevices® Connected app.



# GETTING TO KNOW THE iDEVICES® INSTANT SWITCH

- 1 Turn Light On/Increase Brightness.** (Note: Dimmable feature only available when paired to a dimmable iDevices® product). Single tap to turn light on. Press and hold to increase brightness level. Double tap to quickly increase light to maximum brightness.
- 2 Turn Light Off/Decrease Brightness.** (Note: Dimmable feature only available when paired to a dimmable iDevices® product). Single tap to turn light off. Press and hold to decrease brightness level. Double tap to quickly decrease light to minimum brightness level.
- 3 Status LED.** Provides setup status. Refer to LED color codes on page 20.

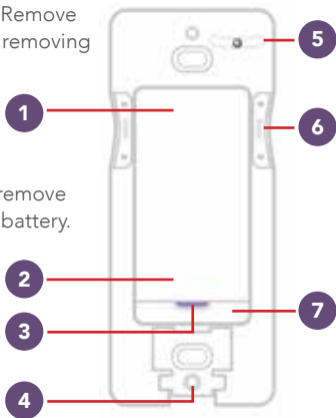
**4** **3M Command™ Strip Access Door.** Remove to access 3M Command™ Strip when removing Instant Switch from wall.

**5** **Level.** Built-in level ensures exact installation.

**6** **Switch Unit Removal.** Press sides to remove Switch from mounting plate to access battery.

**7** **Pairing Reset.** Press and hold for 10 seconds, until LED blinks red.

**7** + **1** **Device Reset.** Press and hold 7+1 simultaneously for 10 seconds, then release to cycle power to the device.



# GETTING TO KNOW THE iDEVICES® INSTANT SWITCH (CONT.)

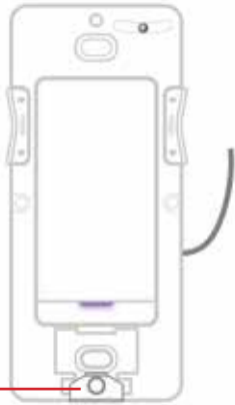
- 8** **Ground Wire Assembly.** Connect to Instant Switch when installing into a gang box.



8



8



# USING FOR THE FIRST TIME

## REMOVE BATTERY PULL TAB

Before using the iDevices® Instant Switch for the first time, you will need to remove the battery tab. Pull the plastic tab out of the back of the product and discard.



# INSTALLATION METHODS

There are 3 methods in which you may install your Instant Switch:

- 1** By itself on the wall, using the provided 3M Command™ Strip and iDevices® faceplate or a standard rocker faceplate of your choice.
- 2** Next to an existing gang box, using the provided 3M Command™ Strip and a multiple switch faceplate of your choice (not included).
- 3** Installed directly into a gang box using a standard rocker style faceplate (not included).

Whichever method you choose, ensure your iDevices® Instant Switch is installed perfectly by using the built-in level.



# INSTALLATION

## 1 INSTALL ON A WALL

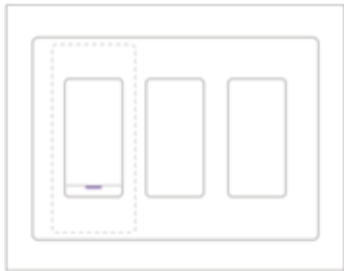
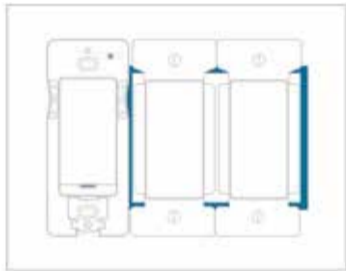
- To mount your Instant Switch directly onto a wall, first thoroughly clean the wall's surface with isopropyl alcohol to remove any dirt or dust.
- Remove the plastic backing to the Command™ Strip & align the strip with the recessed area on the back of the Instant Switch.
- Peel off the other side of the plastic backing and ensure that the product is level before pressing firmly to the wall for 30 seconds.
- Install the magnetic iDevices® faceplate, or a rocker style faceplate of your choice.



## 2 INSTALL NEXT TO GANG BOX

- Mount to the wall using the 3M Command™ Strip next to an existing gang box, as directed on page 14.
- Install a multiple rocker switch faceplate (not included) directly over the Instant Switch and the existing switches to create a multi-switch grouping.





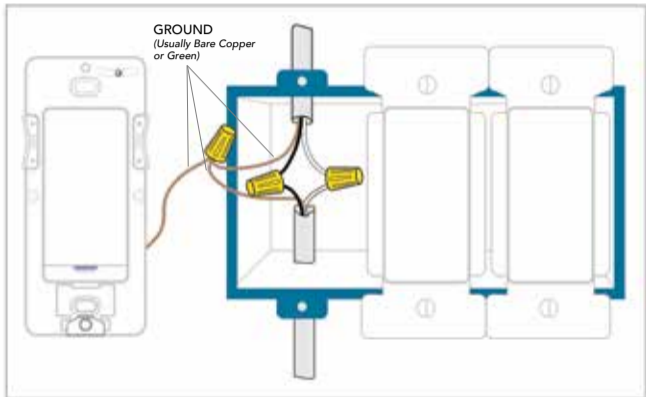
### 3 INSTALL INTO GANG BOX

- Turn OFF the power to the circuit you are working on at your home's breaker or fuse panel.
- Install the Ground Wire Assembly onto the access door of the Instant Switch.



### 3 INSTALL INTO GANG BOX (CONT.)

- Connect the ground wire on the Instant Switch to the ground wire in the gang box, which is usually bare copper or green.

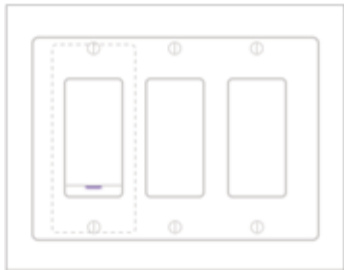
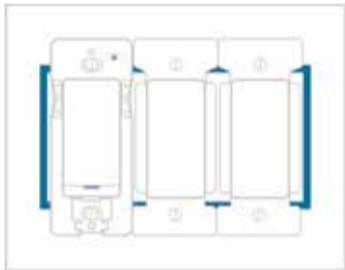


### 3 INSTALL INTO GANG BOX (CONT.)

- If you choose this method of installation, do not use the 3M Command™ Strip on the back of the product. Instead, use the screws provided to anchor it into the gang box.
- Install a rocker switch faceplate (not included).
- Turn the power back on at your circuit breaker.



**CAUTION:** It is not intended to use the iDevices® faceplate when mounting the iDevices® Instant Switch in a gang box. Instead, use a standard rocker faceplate of your choice (not included).



# BATTERY

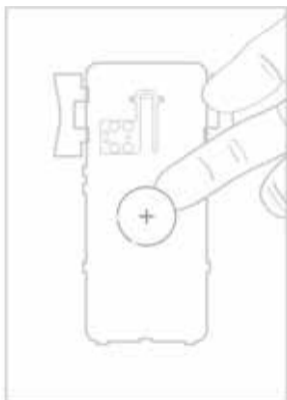
## REPLACING BATTERY

- The iDevices® Instant Switch uses a standard CR2032 battery, and lasts up to 2 years.
- Access the battery by pressing the module assembly in where noted and tilting the top toward you to remove from the mounting plate.
- After the module assembly has been removed, the battery will be visible on the back.
- Remove the battery by inserting your finger into the notch and pulling it toward you.



**CAUTION:** Risk of explosion if battery is replaced by an incorrect type. Dispose of used batteries according to the instructions.





## REPLACING THE MODULE ASSEMBLY

- Line up the tabs on the bottom of the module assembly with the arrows on the bottom of the mounting plate.
- Tip the top of the module assembly up and press it firmly until it clicks into place.

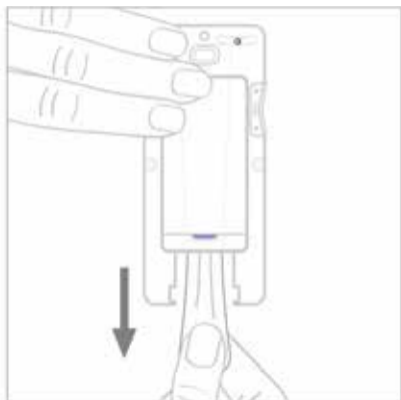


# REMOVING YOUR WALL MOUNTED INSTANT SWITCH

- Remove the Access Door to expose the end of the 3M Command<sup>®</sup> Strip.
- Pull straight down on the end of the 3M Command<sup>®</sup> Strip, while holding Instant Switch firmly against the wall.





**NOTE:** Be sure to pull straight down, as pulling at an angle risks breaking the 3M Command<sup>®</sup> Strip.








# REFERENCE INFORMATION

## LED COLOR CODES

LED State	Instant Description
 Blue Flash	Instant Switch is in pairing mode. The LED <b>flashes blue</b> .
 Solid Blue	Pairing mode has been completed. The LED will turn <b>solid blue</b> .
 Green Flash	When the product setup or software update is complete, the LED <b>flashes green 5 times</b> .
 Solid Yellow	On button press, if battery is low, the LED will turn <b>solid yellow for 2 seconds</b> .

LED State	Instant Description
 Red Flash	On button press, if battery needs replacement, the LED will <b>rapidly flash red 5 times.</b>
 Solid Red	On button press, if Instant Switch has lost the link with it's paired iDevices product, the LED will <b>turn solid red for 5 seconds.</b>
 Purple Flash	When Instant Switch is performing a software update, it <b>flashes purple.</b>

# SUPPORT

If at any time you require assistance, please contact our Customer Experience Team.

 888.313.7019

 [Support@iDevicesinc.com](mailto:Support@iDevicesinc.com)

 [iDevicesinc.com/Support](https://iDevicesinc.com/Support)



# TROUBLESHOOTING AND SUPPORT

A DEVICE RESET CAN RESOLVE MOST ISSUES.



**Device Reset.** Press and hold 7+1 simultaneously for 10 seconds, then release to cycle power to the device.

# REGULATORY INFORMATION

## **Product Information:**

Manufacturer: iDevices® LLC

Model: IDEV0020

FCC: 2ABDJ-IDEV0020

IC: 11569A-IDEV0020

The iDevices® Instant Switch IDEV0020 is certified to comply with applicable FCC and IC rules and regulations governing RF and EMI emissions.

This device complies with Part 15 of the FCC Rules. Operation is subject to the following two conditions: (1) This device may not cause harmful interference, and (2) This device must accept any interference received, including interference that may cause undesired operation.

## **FCC Notice**

This equipment has been tested and found to comply with the limits for a Class B digital device, pursuant to Part 15 of the FCC Rules. These limits are designed to provide reasonable protection against harmful interference in a residential installation.

This equipment generates, uses, and can radiate radio frequency energy and, if not installed and used in accordance with the instructions may cause harmful interference to radio communications. However, there is no guarantee that interference will not occur in a particular installation. If this equipment does cause harmful interference to radio or television reception, which can be determined by turning the equipment off and on, the user is encouraged to try to correct the interference by one or more of the following measures:

- Reorient or relocate the receiving antenna.
- Increase the separation between the equipment and receiver.
- Connect the equipment into an outlet on a circuit different from that to which the receiver is connected.
- Consult the dealer or an experienced radio/TV technician to help.
- Changes or modifications not expressly approved by the party responsible for compliance could void the user's authority to operate the equipment.

## **IC Notice**

This Class B digital apparatus complies with Canadian ICES-003.

Cet appareil numérique de la classe B est conforme à la norme NMB-003 du Canada. Le présent appareil est conforme aux CNR d'Industrie Canada applicables aux appareils radio exempts de licence. L'exploitation est autorisée aux deux conditions suivantes : (1) l'appareil ne doit pas produire de brouillage, et (2) l'utilisateur de l'appareil doit accepter tout

brouillage radioélectrique subi, même si le brouillage est susceptible d'en compromettre le fonctionnement.

This device complies with the Industry Canada license exempt RSS standard(s). Operation is subject to the following two conditions: (1) this device may not cause interference, and (2) this device must accept any interference, including interference that may cause undesired operation of the device.

**CAUTION:** To Reduce the Risk of Overheating And Possible Damage To Other Equipment, Do Not Install To Control A Receptacle, A Motor-Operated Appliance, A Fluorescent Lighting Fixture, Or A Transformer-Supplied Appliance.

ATTENTION: Afin De Reduire Le Risque De Surchauffe Et La Possibilite D'Endommagement A D'Autres Materiels, Ne Pas Installer Pour Commander Une Prise, Un Appareil A Moteur, Une Lampe Fluorescente Ou Un Appareil Alimente Par Un Transformateur.

## References

Requires the iDevices<sup>®</sup> Connected app. For warranty information please visit [iDevicesinc.com/Warranty](http://iDevicesinc.com/Warranty).

Apple, the Apple logo, iPhone, and iPod touch are trademarks of Apple Inc., registered in the U.S. and other countries. App Store is a service mark of Apple Inc. Android is a trademark of Google Inc. Google Play and the Google Play logo are trademarks of Google Inc. The Bluetooth<sup>®</sup> word mark and logos are registered trademarks owned by the Bluetooth SIG, Inc. and any use of such marks by iDevices<sup>®</sup> is under license. Other trademarks and trade names are those of their respective owners.



iDevicesinc.com