



# WALL SWITCH

INSTALLATION & SETUP GUIDE  
FOR SINGLE POLE & 3-WAY CONFIGURATIONS

IN WALL SOLUTIONS

## REQUIRES

- Wi-Fi® 2.4 GHz 802.11 b/g/n compatible network
  - Router Security Settings
- Supported: WPA, WPA2, or None
- Free iDevices® Connected App
- 120VAC “Line” and “Neutral” wires in each gang box
- HomeKit requires an iPhone, iPad or iPod touch with iOS 9.0 or later
- Android™ 4.3+ devices with Bluetooth® Smart technology

## TOOLS NEEDED

- Philips Screwdriver
- Pliers
- Wire Cutter/Stripper
- Voltage Detector
- Flathead Screwdriver

## RATINGS

Input: 125-277VAC, 60Hz

Output: 125-277VAC, 60Hz

Resistive: 1800W @ 120-277VAC

Tungsten: 960W @ 120VAC

Tungsten: 1800W @ 277VAC

Motor: 1HP @ 120-277VAC

Ballast: 10A @ 277VAC

- Not intended for critical medical or life support equipment.
- Use caution when using the iDevices® Wall Switch to control any appliances which produce heat or mechanical motion, or could create a hazardous condition when operated while unattended.
- The iDevices® Wall Switch is not user-serviceable. Do not attempt to open the enclosure for any reason.
- The iDevices® Wall Switch is only for installation with copper or copper-clad wires. Do not install in a circuit that uses aluminum wires.
- The iDevices® Wall Switch must be installed in a manner that conforms to all applicable national, state, and local building codes.
- The iDevices® Wall Switch is intended for dry, indoor use only.
- Use with branch circuit breaker 20A or less.



**RISK OF ELECTRIC SHOCK, SEVERE BURNS, AND FIRE:** Your safety is important to us. Electricity is dangerous and can cause personal injury and property damage if handled improperly. A working knowledge of electrical installation is required to install this product. If you are not comfortable working with electricity do not attempt to install the iDevices® Wall Outlet and seek professional assistance from a qualified electrician.

## BEFORE YOU START

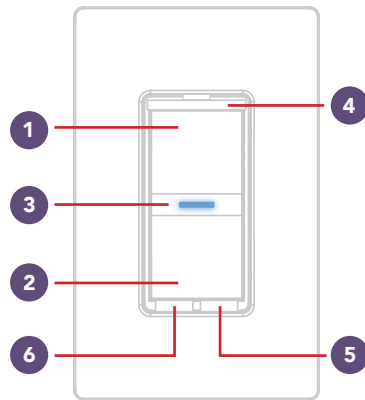
- Read through this Installation Guide in its entirety before starting installation of your iDevices® Wall Switch or removal of your old switches. Incorrect installation can be dangerous and can damage your iDevices® Wall Switch or your home. The iDevices® Wall Switch is intended to be installed by a qualified electrician.
- Visit our YouTube channel for tips on installation and setup: [www.youtube.com/user/iDevicesInc](http://www.youtube.com/user/iDevicesInc)
- Turn OFF the power to the circuit you are working on at your home's breaker or fuse panel.

- Where ever possible, install the iDevices® Wall Switch in a non-metallic gang box and use a non-metallic faceplate, as metal gang boxes and faceplates can decrease the Wi-Fi® signal strength.
- Check that your mobile device is compatible with the iDevices® Wall Switch at [iDevicesinc.com/Compatibility](http://iDevicesinc.com/Compatibility)
- It is YOUR responsibility to be sure that products are installed in accordance with applicable building codes. Check with your local building office if you have questions.
- Download the Free iDevices® Connected app.
- For 4-way configurations, visit: [iDevicesinc.com/Support/WallSwitch/Setup](http://iDevicesinc.com/Support/WallSwitch/Setup)

## GETTING TO KNOW THE iDEVICES® WALL SWITCH

- 1 Turn Light On.** Used also for 3-way, 4-way pairing.
- 2 Turn Light Off.** Used also for connecting to the Wi-Fi® network.
- 3 Status LED/Night Light.** Provides setup status and used as a night light during operation. Refer to LED color codes on page 42.
- 4 Pull Out Tab.** Refer to this when prompted to enter your HomeKit™ setup code during the setup on a iOS device. Also used to document the Wall Switch as the Primary or Secondary in a 3-way or 4-way configuration.
- 5 Device Reboot.** Pressing this cycles power to the device.

- 6 Pairing Setup Button.** Used to wireless pair between multiple Wall Switches for 3-way and 4-way configurations and for connecting to the Wi-Fi network.  
**DEVICE RESET:** Press and hold for 10 seconds until LED blinks red.



# INSTALLATION - SINGLE POLE

## STEP 1

Turn off the power at the circuit breaker.

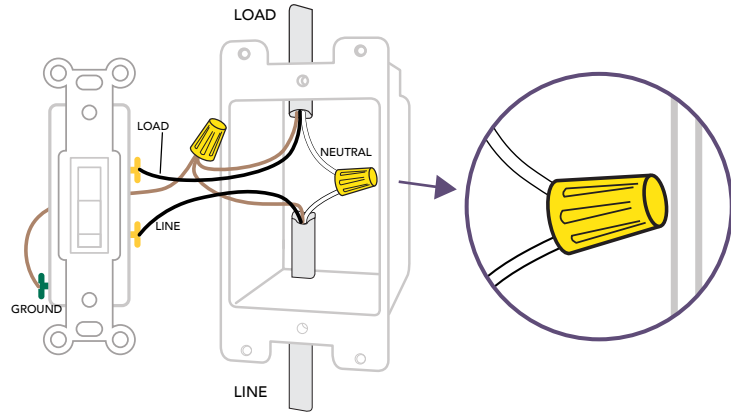
## STEP 2

Remove the existing switch from the gang box.

## STEP 3

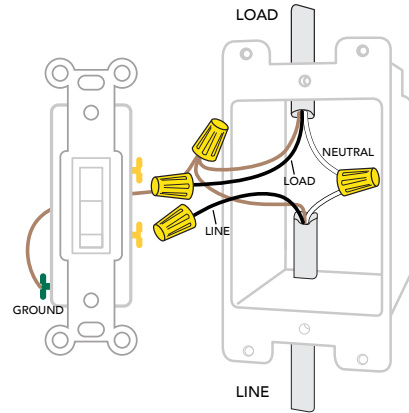
Confirm that each gang box contains a neutral wire (typically white). If there are no neutral wires present, you may need to run additional wires, please consult a qualified electrician.

**NOTE:** Your home's wiring may differ; please consult a qualified electrician.



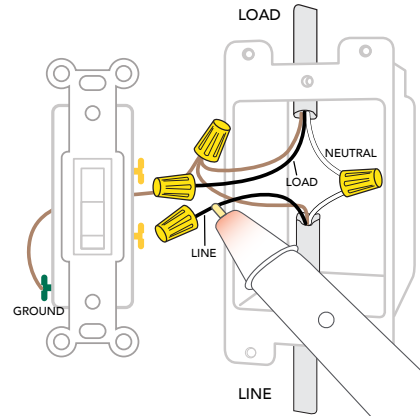
## STEP 4

Remove both wires from the terminals of the existing switch and cap with the provided wire nuts. Note: If you have more than 2 wires connected to your switch (not including the bare copper or green-coated ground wire), please see the 3-way, 4-way installation instructions. It is not necessary to remove the ground wire.



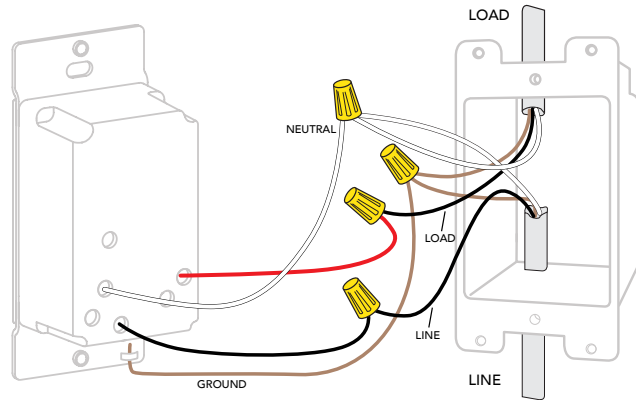
## STEP 5

Turn the power back On at the breaker. Using your voltage detector, identify which of the 2 wires you removed is energized. This is the "Line" wire. The wire that is not energized is the "Load" wire. Note these two wires for future reference.



## STEP 6

Turn the power back Off at the breaker and install the iDevices® Wall Switch according to the diagram. Ensure all wire nuts are securely fastened.



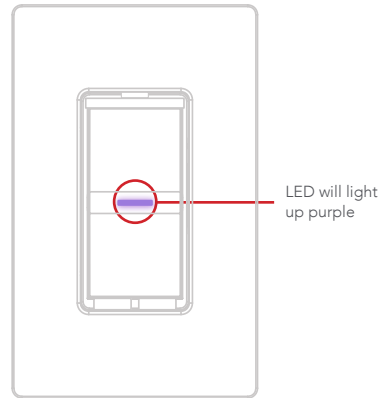


## STEP 7

Install the Wall Switch into the gang box and install the faceplate.

## STEP 8

Turn the power back On at the circuit breaker and confirm that the LED on the Wall Switch lights up purple.



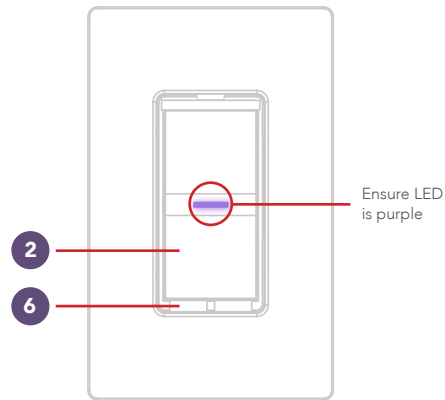
# WIRELESS COMMUNICATION SETUP

## STEP 1

Ensure power/breaker is turned back on and the LED on the Wall Switch is solid purple.

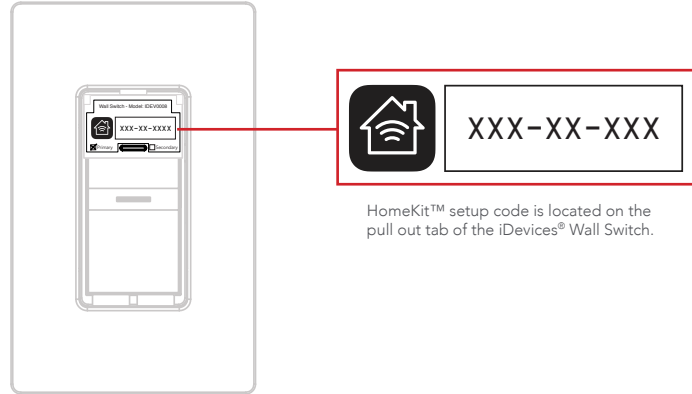
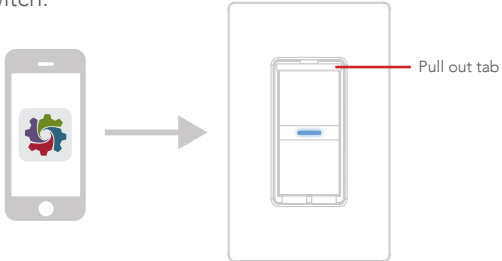
## STEP 2

Press and hold "6" for 5 seconds and release when the LED rapidly flashes blue. Next tap "2" to begin the Wi-Fi® connection process.



### STEP 3

Launch the iDevices® Connected app and you will be guided through the process of connecting your Wall Switch. For iOS devices, you will need the HomeKit™ setup code on the pull out tab on your Wall Switch.



# INSTALLATION - 3-WAY

## STEP 1

Turn off the power at the circuit breaker.

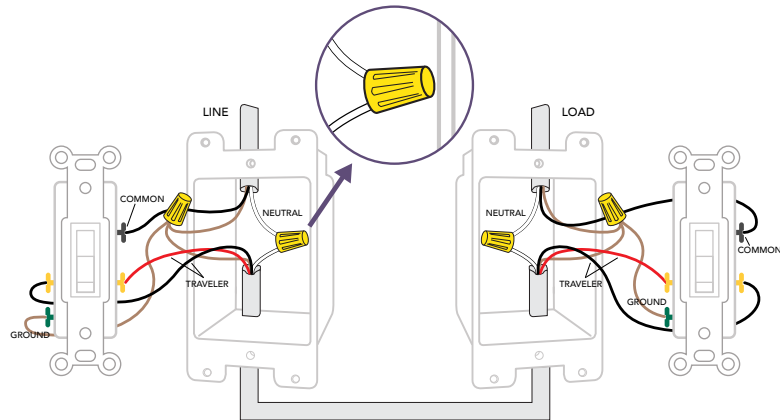
## STEP 2

Remove the existing switches from the gang boxes.

## STEP 3

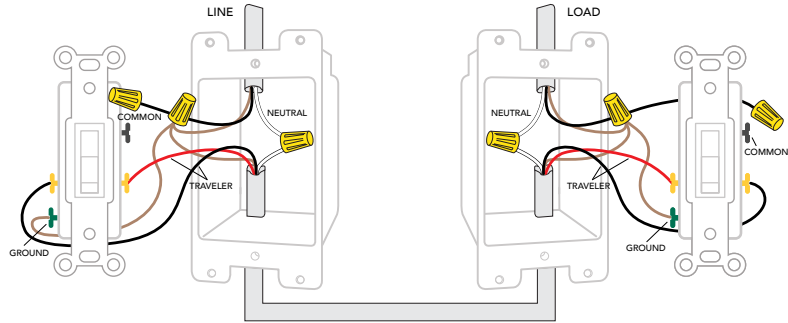
Confirm that each gang box contains a neutral wire (typically white). If there are no neutral wires present, you may need to run additional wires, please consult a qualified electrician.

**NOTE:** Your home's wiring may differ; please consult a qualified electrician.



## STEP 4

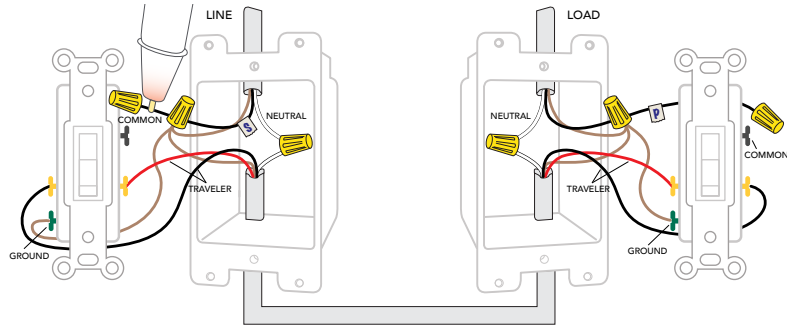
Remove the wires from the Common terminal on both of the existing switches and cap with the provided wire nuts. Note: The common terminals usually have a screw that is either black or copper in color.



## STEP 5

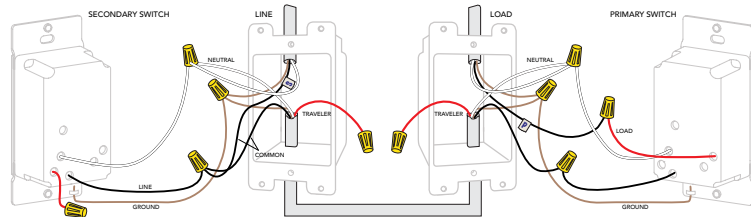
Turn the power back on at the breaker. Using your voltage detector, identify which of the 2 common wires you removed is energized. This is the "line" wire. Mark this wire as the Secondary (S) Switch Position. You will need to refer to this during the **Pairing and Setup Process**.

The common wire that is not energized is the "load" wire. Mark as the Primary (P) Switch Position. You will need to refer to this during the **Pairing and Setup Process**.



## STEP 7

Install the iDevices® Wall Switches according to the diagram. Ensure the wire nuts are securely fastened.



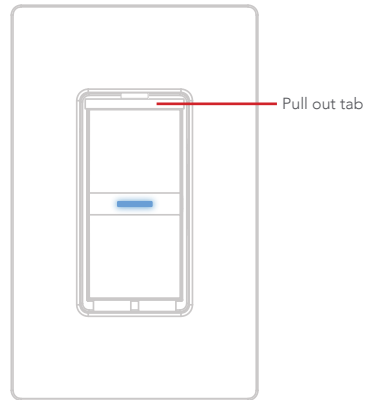
Ensure you install a wire nut on the red lead on the secondary switch as well as on both ends of the traveler wire (typically red wire)

## STEP 8

Install the Wall Switches into the gang boxes.

## STEP 9

Extend the pull out tab on the front of the Wall Switch connected to the Line wire (identified in step 5), Using a pen, put a "X" in the box on to indicate that this is the Secondary Switch.



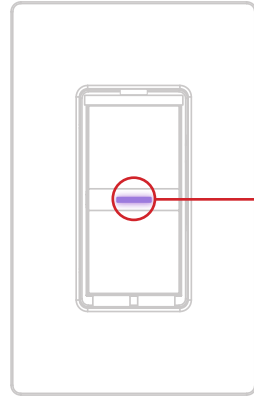
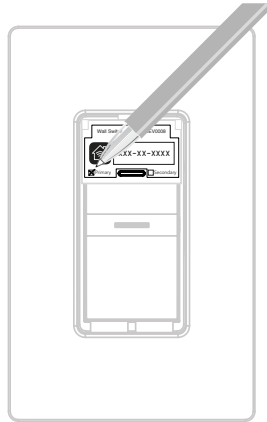


## STEP 10

Extend the pull out tab on the front of the Wall Switch connected to the Load wire (identified in step 5), Using a ball point pen, put a "X" in the box on to indicate that this is the Primary Switch.

## STEP 11

Turn the power back on at the circuit breaker and confirm that the LED on both Wall Switches light up purple.



Ensure LED  
is purple on  
BOTH Wall  
Switches

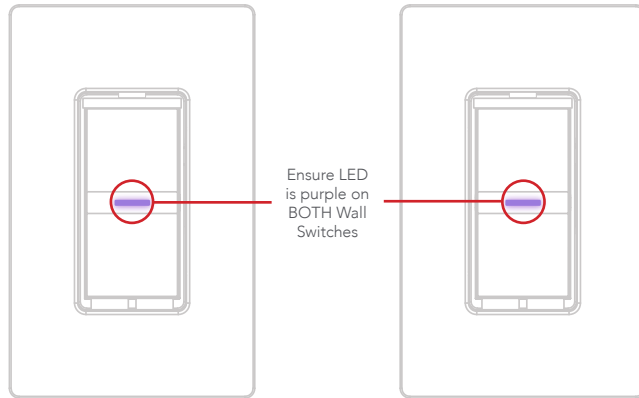
## WIRELESS COMMUNICATION SETUP

*The wireless setup is a 2 step process for a 3-way Switch configuration. First you will pair the Primary Switch to the Secondary Switch, then you will add the Primary Switch to your Wi-Fi® network.*

### PAIRING THE PRIMARY TO THE SECONDARY SWITCH

#### STEP 1

Ensure power/breaker is turned back on and the LED on both Wall Switches are solid purple.



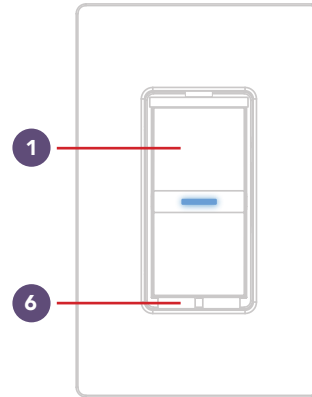
Ensure LED  
is purple on  
BOTH Wall  
Switches

## STEP 2

Locate the "primary" Switch. Hold "6" until the LED rapidly flashes blue (5 sec) then release. Next tap "1" to enter pairing mode. The LED will flash blue slowly.

Next Locate the "secondary" Switch. Repeat the steps above on the Secondary Switch by holding "6" until the LED rapidly flashes blue (5 seconds) then release. Next tap "1" to begin the pairing mode. The LED will flash blue slowly.

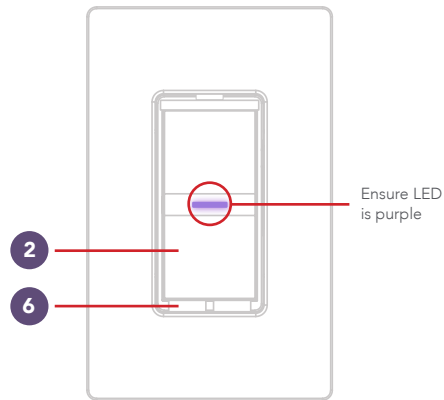
The "secondary" Wall Switch will search and pair to the "primary" switch. The LED on each Wall Switch will rapidly blink green 5 times and each Wall Switch will beep 5 times to indicate the pairing process is complete.



# CONNECTING TO THE WIRELESS NETWORK

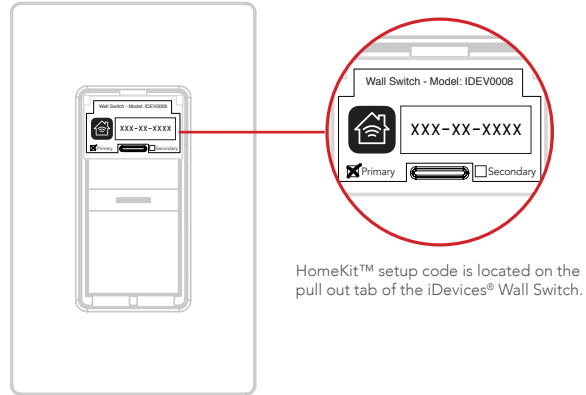
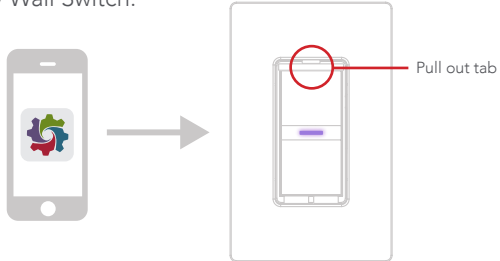
## STEP 1

On the "Primary" switch press and hold "6" for 5 seconds and release when the LED rapidly flashes blue. Next Tap "2" to begin the Wi-Fi® connection process.







## STEP 2





Launch the iDevices® Connected app and you will be guided through the process of connecting your wall switches. For iOS devices, you will need the HomeKit™ setup code on the pull out tab of your **Primary** Wall Switch.



# REFERENCE INFORMATION

## LED COLOR CODES

LED State	Description
 Blue Flashing	Wall Switch is waiting for the handset to configure the accessory's Wi-Fi®. The LED <b>flashes blue</b> .
 Solid Blue	Wall Switch is waiting for the handset to initiate and complete pair set up through either Wi-Fi® or BLE (Bluetooth Low Energy). <b>The LED is solid blue.</b>
 Slow Blue Flash	Pairing mode has expired and Wall Switch is waiting for the user to press the Pairing Button <b>6</b> down for about 3 seconds to reenter pairing mode. <b>The LED slowly flashes blue.</b>
 Solid Blue	To reinitiate the pairing mode, hold the Pairing Button <b>6</b> down for 3 seconds and the LED will <b>turn solid blue</b> .

LED State	Description
 Green Flash	When Wall Switch joins a Wi-Fi® network, (i.e., the link is up) the LED <b>flashes green for 1 second</b> .
 Orange Flash	When Wall Switch has lost the connection to the Wi-Fi® network, (i.e., the link is down) the LED <b>slow flashes orange until the link is up</b> .
 Red Flash	To initiate a device reset, which will clear all Wi-Fi® and pairing information, hold the Pairing Button <b>6</b> down for 10 seconds until the LED <b>rapidly flashes red</b> . When the button is released the unit will reboot and reenter the pairing mode.
 Purple Flash	When Wall Switch receives a request to identify itself, it <b>rapidly flashes purple</b> .

# SUPPORT

If at any time you require assistance, please contact our Customer Experience Team.

📞 Call: 888.313.7019

✉ Email: [Support@iDevicesinc.com](mailto:Support@iDevicesinc.com)

🖱 Visit: [iDevicesinc.com/Support](https://iDevicesinc.com/Support)

# REGULATORY INFORMATION

## Product Information:

Manufacturer: iDevices® LLC

Model: IDEV0008

FCC: 2ABDJ-SWITCH8

IC: 11569A-SWITCH8

The iDevices® Wall Switch IDEV0008 is certified to comply with applicable FCC and IC rules and regulations governing RF and EMI emissions.

This device complies with Part 15 of the FCC Rules. Operation is subject to the following two conditions: (1) This device may not cause harmful interference, and (2) This device must accept any interference received, including interference that may cause undesired operation.

## FCC Notice

This equipment has been tested and found to comply with the limits for a Class B digital device, pursuant to Part 15 of the FCC Rules. These limits are designed to provide reasonable protection against harmful interference in a residential installation.

This equipment generates, uses, and can radiate radio frequency energy and, if not installed and used in accordance with the instructions may cause harmful interference to radio communications. However, there is no guarantee that interference will not occur in a particular installation. If this equipment does cause harmful interference to radio or television reception, which can be determined by turning the equipment off and on, the user is encouraged to try to correct the interference by one or more of the following measures:



- Reorient or relocate the receiving antenna.
- Increase the separation between the equipment and receiver
- Connect the equipment into an outlet on a circuit different from that to which the receiver is connected
- Consult the dealer or an experienced radio/TV technician to help.
- Changes or modifications not expressly approved by the party responsible for compliance could void the user's authority to operate the equipment

## IC Notice

This Class B digital apparatus complies with Canadian ICES-003.  
Cet appareil numérique de la classe B est conforme à la norme NMB-003 du Canada. Le présent appareil est conforme aux CNR d'Industrie Canada applicables aux appareils radio exempts de licence. L'exploitation est autorisée aux deux conditions suivantes : (1) l'appareil ne doit pas produire de brouillage, et (2) l'utilisateur de l'appareil doit accepter tout brouillage radioélectrique subi, même si le brouillage est susceptible d'en

compromettre le fonctionnement.

This device complies with the Industry Canada license exempt RSS standard(s). Operation is subject to the following two conditions: (1) this device may not cause interference, and (2) this device must accept any interference, including interference that may cause undesired operation of the device.

## References

Requires the iDevices® Connected app. For warranty information please visit [iDevicesinc.com/Warranty](http://iDevicesinc.com/Warranty).

Apple, the Apple logo, iPhone, and iPod touch are trademarks of Apple Inc., registered in the U.S. and other countries. App Store is a service mark of Apple Inc. HomeKit is a trademark of Apple Inc. Controlling HomeKit-enabled accessories away from home requires an Apple TV (3rd generation or later) with Apple TV software 7.0 or later and an iPhone, iPad, or iPod touch with iOS 8.1 or later.

Amazon, Echo, Alexa and all related logos are trademarks of Amazon.com, Inc. or its affiliates. Android is a trademark of Google Inc. Google Play and the Google Play logo are trademarks of Google Inc.

