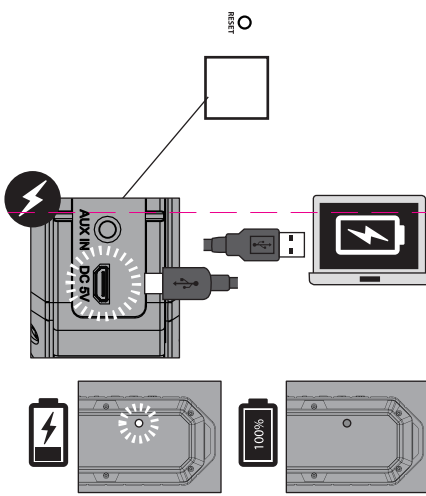
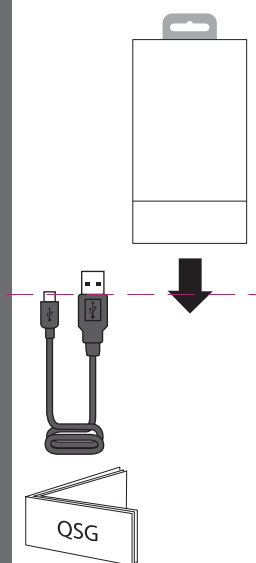


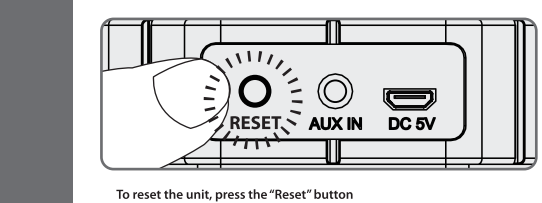
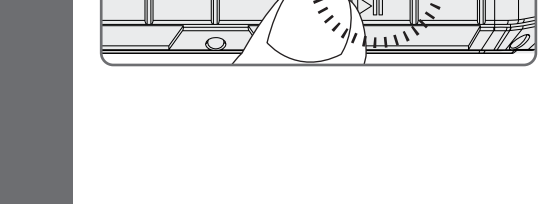
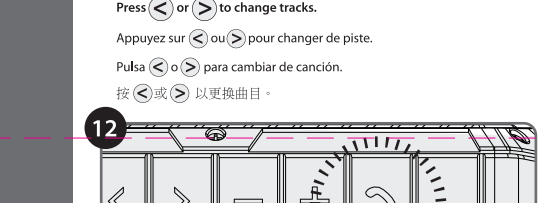
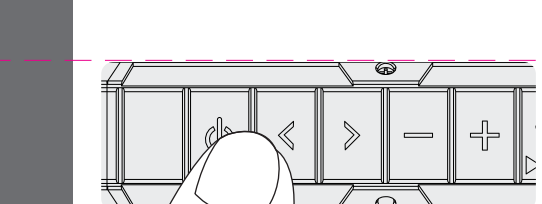
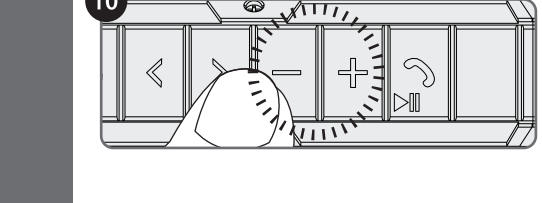
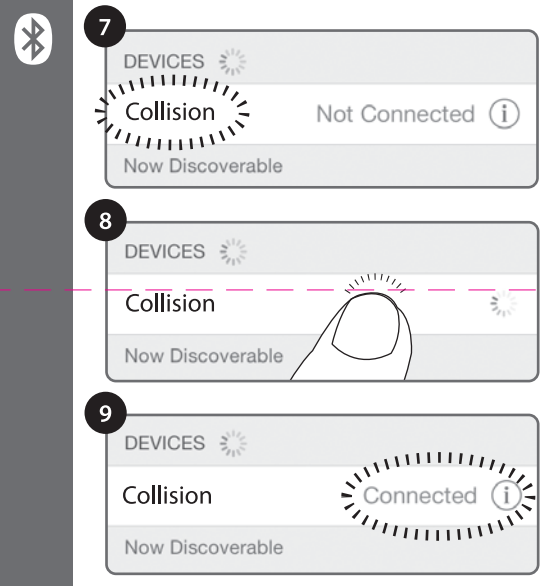
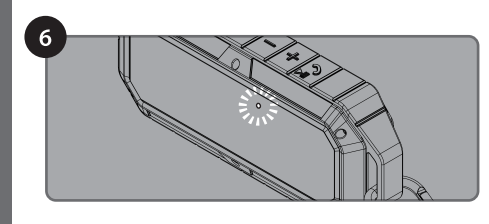
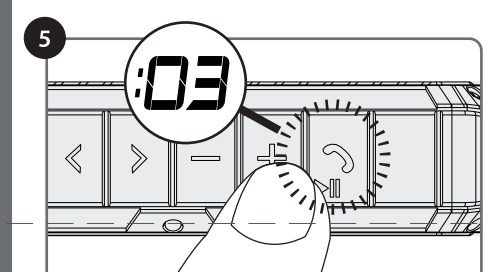
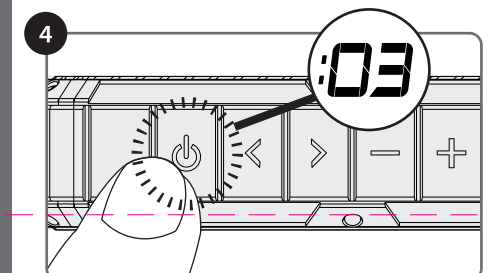
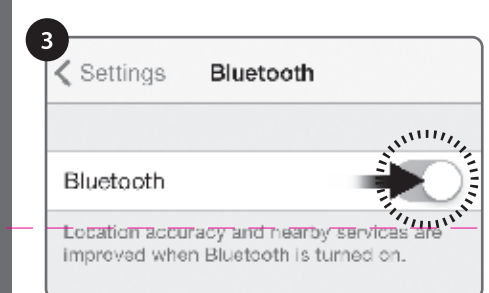
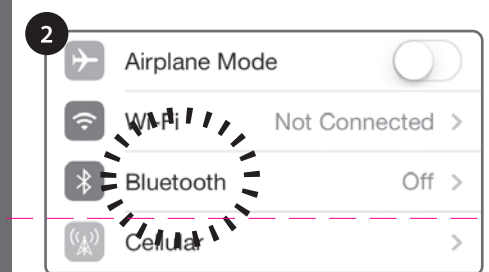
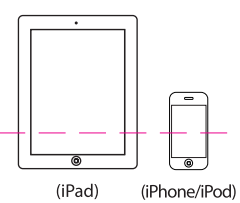
iLuv
Inspired in New York. Styled by iLuv®.

坚固和防水无线蓝牙音箱

Quick Start Guide /
Guide de démarrage rapide /
快速入门指南



(Apple device shown as an example)
(Dispositif Apple montré en exemple)
(苹果设备为例)



To reset the unit, press the "Reset" button
Pour réinitialiser l'appareil, appuyez sur le bouton « Reset »
要重置该单元，按“重置”按钮

WARNING: Changes or modifications to this unit not expressly approved by the party responsible for compliance may void the user's warranty for this equipment.

This device complies with Part 15 of the FCC Rules. Operation is subject to the following two conditions: (1) the device may not cause harmful interference, and (2) the device must accept any interference received, including interference that may cause undesired operation.

NOTE: This equipment has been tested and found to comply with the limits for a Class B digital device, pursuant to Part 15 of the FCC Rules. These limits are designed to provide reasonable protection against harmful interference in a residential environment. The equipment generates, uses, and can radiate radio frequency energy and, if not properly installed and used, may cause interference to radio communications. By the way, these limits do not apply to other digital devices that operate in the same frequency band. To avoid such interference, you should follow the following instructions: (1) Do not use the antenna or power cord with a damaged shielded cable. (2) Do not use the antenna or power cord with a damaged shielded cable. (3) Do not use the antenna or power cord with a damaged shielded cable.

- Do not use the antenna or power cord with a damaged shielded cable.
- Do not use the antenna or power cord with a damaged shielded cable.
- Do not use the antenna or power cord with a damaged shielded cable.
- Do not use the antenna or power cord with a damaged shielded cable.

LIMITED WARRANTY

WARRANTY

The Limited Warranty for iLuv products is limited to the original purchaser of the product. It is void if the product is used for commercial purposes, is damaged by accident, misuse, or neglect, or if the product is not used in accordance with the instructions. The warranty does not cover any consequential or incidental damages, including lost profits, lost data, or any other damages. The warranty is limited to the repair or replacement of the product, at the discretion of iLuv. The warranty is void if the product is not used in accordance with the instructions.

DISCLAIMER

The Manufacturer does not warrant the product for use in any environment other than a normal residential environment. The product is not intended for use in any hazardous or explosive atmosphere. The product is not intended for use in any environment where it may be exposed to high temperatures, high humidity, or other environmental conditions that may affect the performance of the product.

REGULATORY COMPLIANCE

This equipment complies with the FCC radiation exposure limits set forth for an uncontrolled environment. This equipment should be installed and operated with minimum distance 20cm between the radiator & your body.

RF warning for Mobile device:

This equipment complies with FCC radiation exposure limits set forth for an uncontrolled environment.

This equipment should be installed and operated with minimum distance 20cm between the radiator & your body.

This equipment should be installed and operated with minimum distance 20cm between the radiator & your body.

This equipment should be installed and operated with minimum distance 20cm between the radiator & your body.

This equipment should be installed and operated with minimum distance 20cm between the radiator & your body.

This equipment should be installed and operated with minimum distance 20cm between the radiator & your body.

This equipment should be installed and operated with minimum distance 20cm between the radiator & your body.

This equipment should be installed and operated with minimum distance 20cm between the radiator & your body.

This equipment should be installed and operated with minimum distance 20cm between the radiator & your body.

This equipment should be installed and operated with minimum distance 20cm between the radiator & your body.

This equipment should be installed and operated with minimum distance 20cm between the radiator & your body.

This equipment should be installed and operated with minimum distance 20cm between the radiator & your body.

This equipment should be installed and operated with minimum distance 20cm between the radiator & your body.

This equipment should be installed and operated with minimum distance 20cm between the radiator & your body.

This equipment should be installed and operated with minimum distance 20cm between the radiator & your body.

This equipment should be installed and operated with minimum distance 20cm between the radiator & your body.

This equipment should be installed and operated with minimum distance 20cm between the radiator & your body.

This equipment should be installed and operated with minimum distance 20cm between the radiator & your body.

This equipment should be installed and operated with minimum distance 20cm between the radiator & your body.

This equipment should be installed and operated with minimum distance 20cm between the radiator & your body.

This equipment should be installed and operated with minimum distance 20cm between the radiator & your body.

This equipment should be installed and operated with minimum distance 20cm between the radiator & your body.

This equipment should be installed and operated with minimum distance 20cm between the radiator & your body.

This equipment should be installed and operated with minimum distance 20cm between the radiator & your body.

This equipment should be installed and operated with minimum distance 20cm between the radiator & your body.

This equipment should be installed and operated with minimum distance 20cm between the radiator & your body.

This equipment should be installed and operated with minimum distance 20cm between the radiator & your body.

This equipment should be installed and operated with minimum distance 20cm between the radiator & your body.

This equipment should be installed and operated with minimum distance 20cm between the radiator & your body.

This equipment should be installed and operated with minimum distance 20cm between the radiator & your body.

This equipment should be installed and operated with minimum distance 20cm between the radiator & your body.

This equipment should be installed and operated with minimum distance 20cm between the radiator & your body.

This equipment should be installed and operated with minimum distance 20cm between the radiator & your body.

This equipment should be installed and operated with minimum distance 20cm between the radiator & your body.

This equipment should be installed and operated with minimum distance 20cm between the radiator & your body.

This equipment should be installed and operated with minimum distance 20cm between the radiator & your body.

This equipment should be installed and operated with minimum distance 20cm between the radiator & your body.

This equipment should be installed and operated with minimum distance 20cm between the radiator & your body.

This equipment should be installed and operated with minimum distance 20cm between the radiator & your body.

This equipment should be installed and operated with minimum distance 20cm between the radiator & your body.

This equipment should be installed and operated with minimum distance 20cm between the radiator & your body.

This equipment should be installed and operated with minimum distance 20cm between the radiator & your body.

This equipment should be installed and operated with minimum distance 20cm between the radiator & your body.

This equipment should be installed and operated with minimum distance 20cm between the radiator & your body.

This equipment should be installed and operated with minimum distance 20cm between the radiator & your body.

This equipment should be installed and operated with minimum distance 20cm between the radiator & your body.

This equipment should be installed and operated with minimum distance 20cm between the radiator & your body.

This equipment should be installed and operated with minimum distance 20cm between the radiator & your body.

This equipment should be installed and operated with minimum distance 20cm between the radiator & your body.

PKG TEAM

Designer: _____
Product: _____
Project: QSG
Date: _____
Scale: 100%

COMMENTS

Please do not print this layer!!!
· 100% actual size

