

TimeShaker® Boom

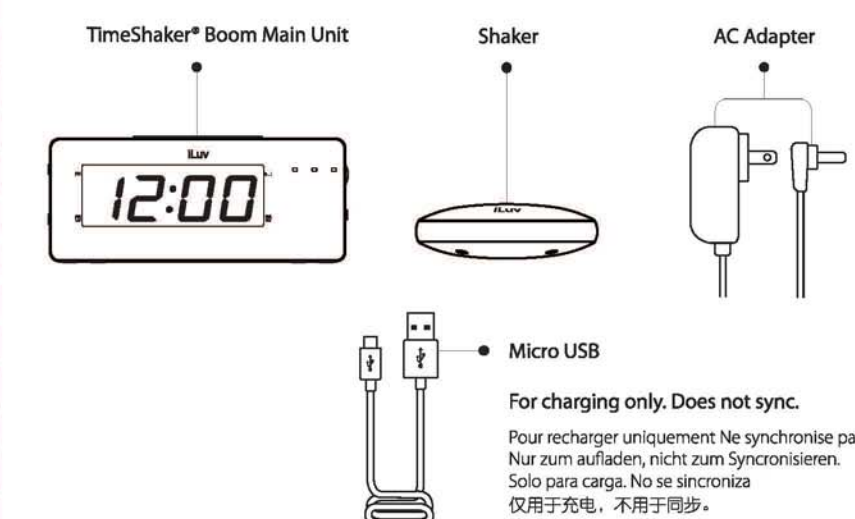
Jumbo LED Dual Alarm Clock with Wireless Rechargeable Bed Shaker

Radio réveil à écran LED rétroéclairé avec son rechargeable et sans fil
Rearn LED Dual Vecker mit drahtlosem Bed Shaker
Despertador de pantalla LED y Adaptador de carga inalámbrico y recargable
明式LED双電覺器與Ambo LED電震器

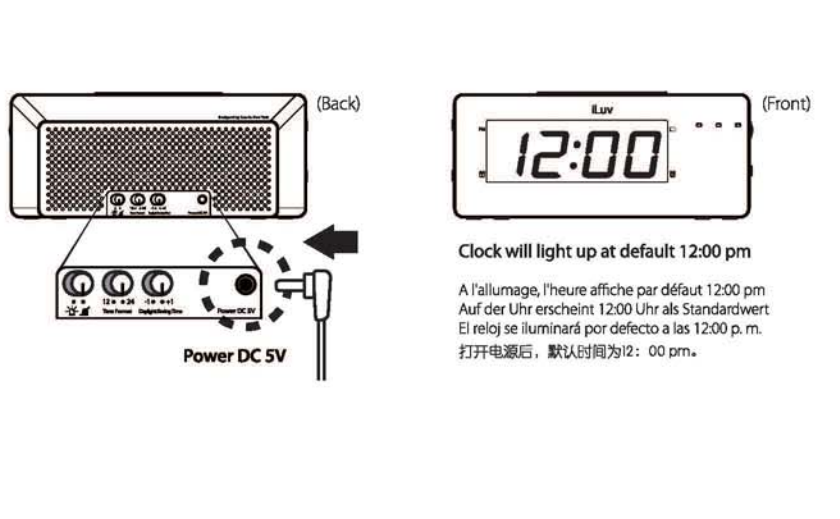
Quick Start Guide

Guide de démarrage rapide

WHAT'S INCLUDED

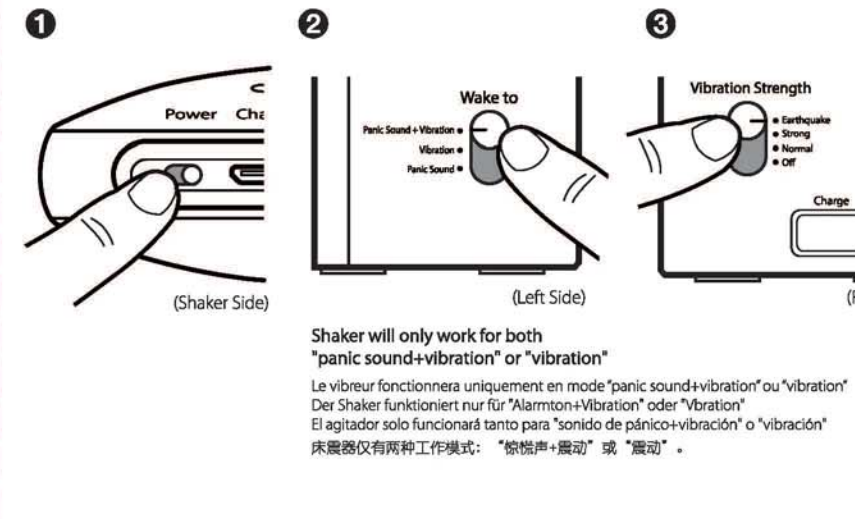


1. TO POWER ON / REGLAR / LUM BIN EINZUSTELLEN / PAMA ENCENDER / 打開電

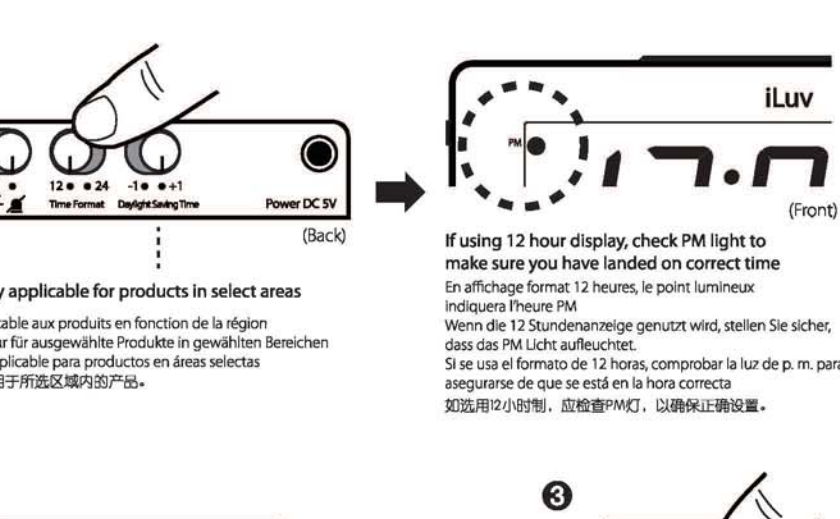


SETTING UP BED SHAKER

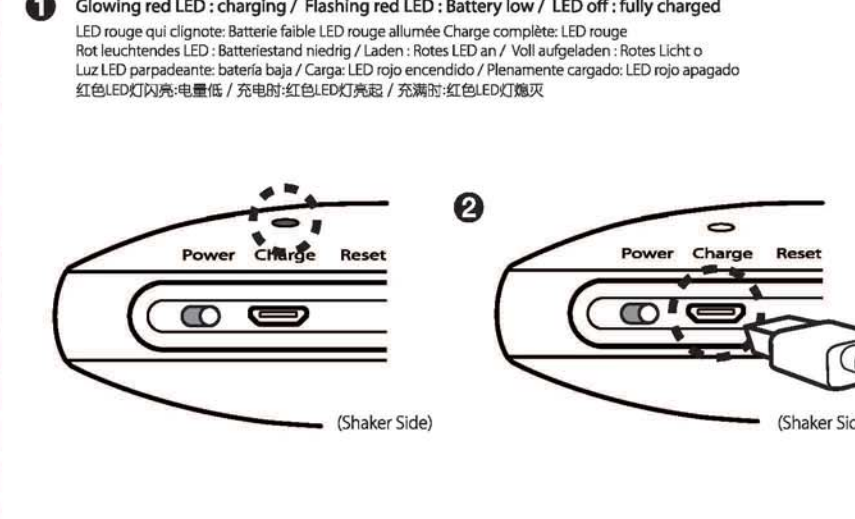
MÉLAGE DE VIBREUR DE LIT / BED SHAKER EINSTELLEN
CONFIGURACIÓN DEL AGITADOR DE CAMA / 震床設置



2. SETTING TIME / REGLAR DE L'HEURE / UHRZEIT EINSTELLEN / AJUSTE LA HORA / 調整鐘



CHARGING / CHARGEMENT / AUFLADEN / CARGA / 充電



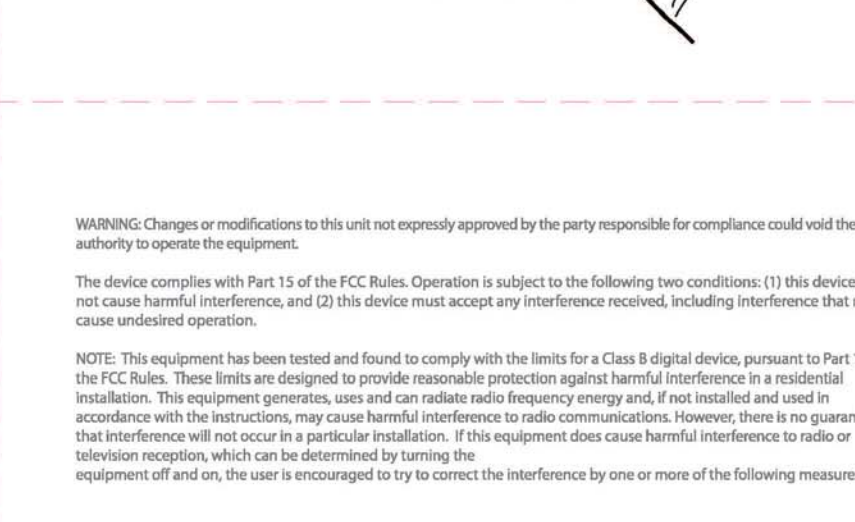
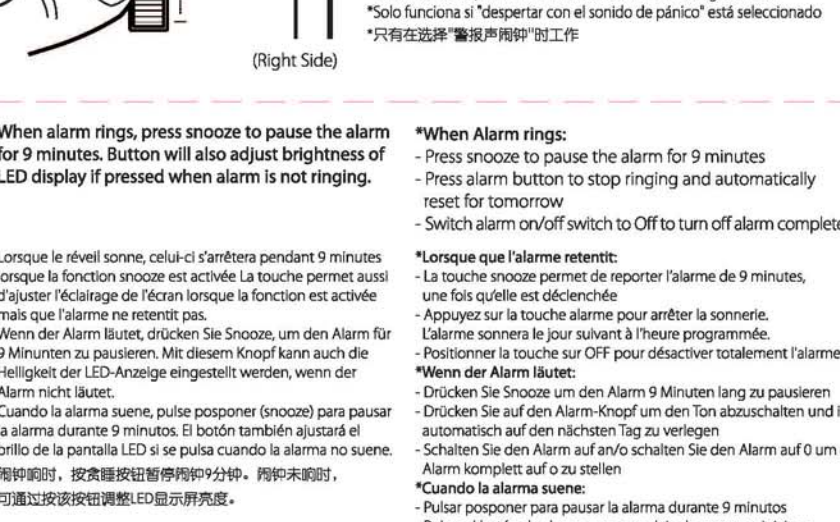
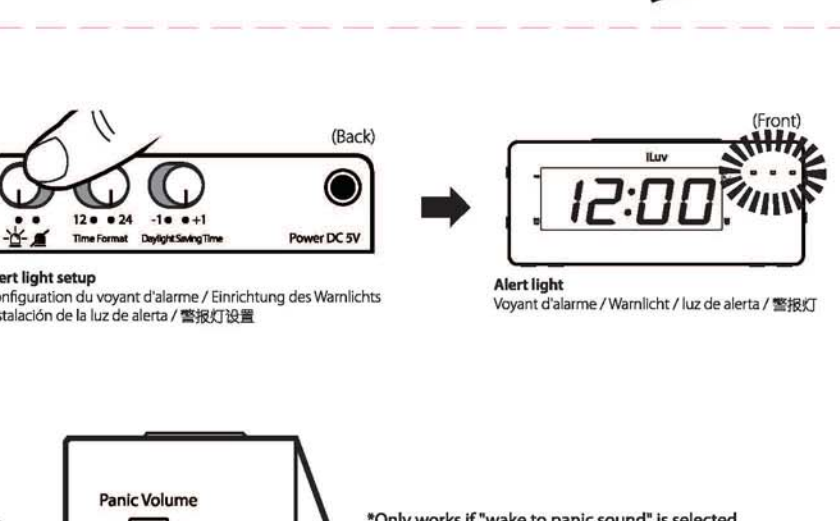
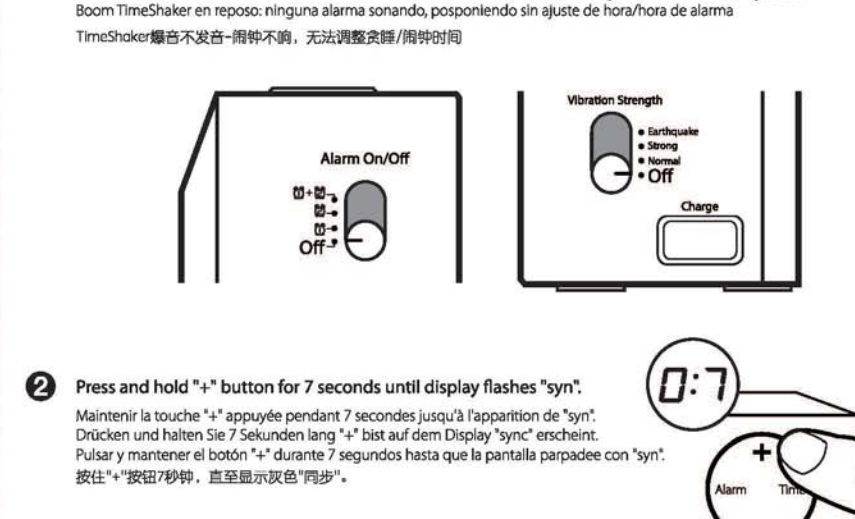
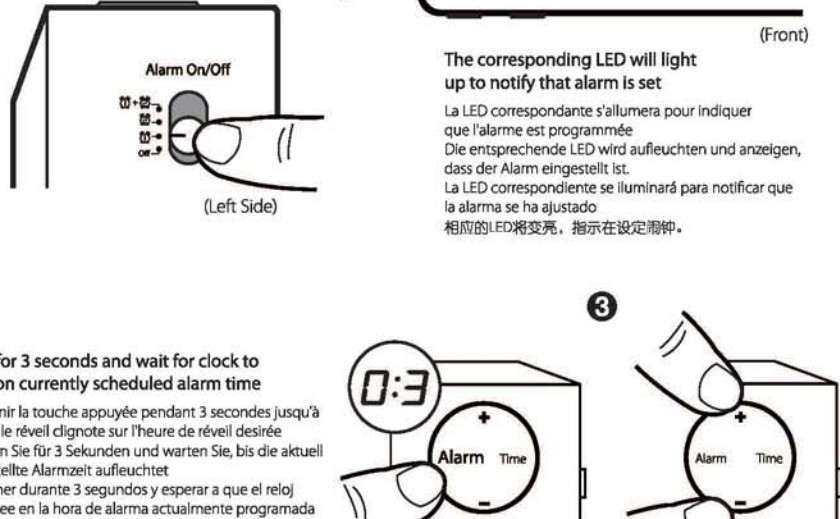
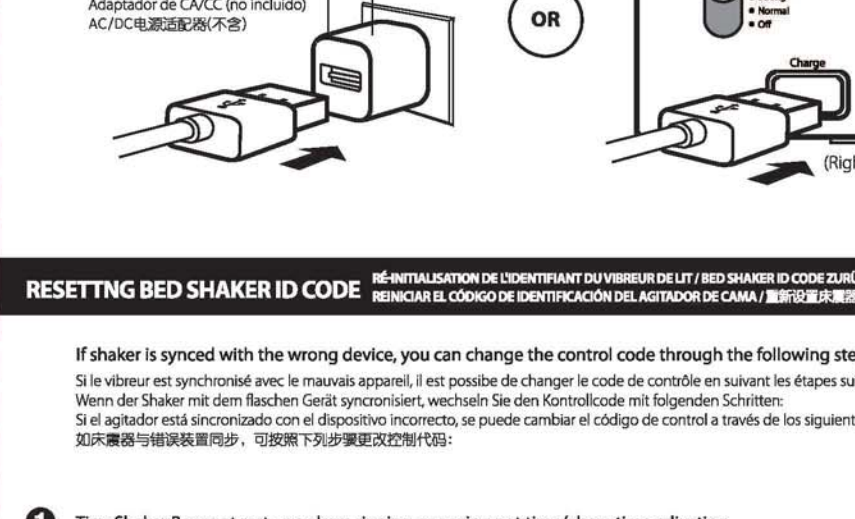
3. SETTING - TURNING OFF ALARM

REGLAR/TURNING OFF ALARM / EINSTELLEN/ABSTELLEN DES ALARMS
ACTIVAR/OCSACTUAR LA ALARMA / 調整/關閉鐘聲



RESETTING BED SHAKER ID CODE

REINIZIALIZAZIONE CONTROLLER ALTERNATIVE DI CAMA / 震床ID碼重設



LIMITED WARRANTY

WARRANTY COVERAGE
This product is covered by a limited warranty for a period of 12 months from the date of purchase. The warranty covers defects in materials and workmanship under normal use. It does not cover damage caused by misuse, accident, or unauthorized repair. For more information, please visit our website: www.luv.com

GARANTÍA LIMITADA

COBERTURA DE LA GARANTÍA
Este producto está cubierto por una garantía limitada por un período de 12 meses desde la fecha de compra. La garantía cubre defectos de materiales y mano de obra en el uso normal. No cubre el daño causado por el uso indebido, accidente o reparación no autorizada. Para más información, visite nuestro sitio web: www.luv.com

제한 보증

보증 범위
이 제품은 구매일로부터 12개월 동안의 제한 보증에 의해 보호됩니다. 보증은 정상 사용 하에 재료 및 공작manship의 결함을 포함합니다. 오용, 사고 또는 무단 수리로 인한 피해는 보증에 포함되지 않습니다. 자세한 내용은 저희 웹사이트를 방문하십시오: www.luv.com

有限保

保範圍
本產品由購買之日起享有十二個月有限保。保範圍包括在正常使用下之物料及工manship之缺陷。因誤用、意外或未經授權之維修所造成之損壞不在保範圍內。欲知詳情，請前往www.luv.com

保証範圍

保証範圍
本產品由購買之日起享有十二個月有限保。保範圍包括在正常使用下之物料及工manship之缺陷。因誤用、意外或未經授權之維修所造成之損壞不在保範圍內。欲知詳情，請前往www.luv.com

RETURNING YOUR PRODUCT

Returning your product to the manufacturer for a refund or replacement is subject to the following conditions: 1. The product must be returned within 30 days of purchase. 2. The product must be in its original packaging. 3. The product must be in good working condition. For more information, please visit our website: www.luv.com

DEVOLUÇÃO DO SEU PRODUTO

Devolver o seu produto ao fabricante para reembolso ou substituição está sujeito às seguintes condições: 1. O produto deve ser devolvido dentro de 30 dias da compra. 2. O produto deve estar na embalagem original. 3. O produto deve estar em boas condições de funcionamento. Para mais informações, visite o nosso site: www.luv.com

INSTRUTION ON ENVIRONMENT PROTECTION

This product is designed to be environmentally friendly. It contains no hazardous substances. Please dispose of it properly according to local regulations. For more information, please visit our website: www.luv.com

RECICLAJE Y PROTECCIÓN DEL AMBIENTE

Este producto está diseñado para ser respetuoso con el medio ambiente. No contiene sustancias peligrosas. Por favor, elimínelo correctamente de acuerdo con las regulaciones locales. Para más información, visite nuestro sitio web: www.luv.com

FCI NOTICE (USA)

FCC Notice (USA): This device complies with the FCC Rules, Part 15. It may cause interference with other electronic devices. For more information, please visit our website: www.luv.com

FCI NOTICE (USA)

FCC Notice (USA): This device complies with the FCC Rules, Part 15. It may cause interference with other electronic devices. For more information, please visit our website: www.luv.com

INSTRUTIONS PARA LA PROTECCIÓN DEL MEDIO AMBIENTE

Este producto está diseñado para ser respetuoso con el medio ambiente. No contiene sustancias peligrosas. Por favor, elimínelo correctamente de acuerdo con las regulaciones locales. Para más información, visite nuestro sitio web: www.luv.com

INSTRUTIONS PARA LA PROTECCIÓN DEL MEDIO AMBIENTE

Este producto está diseñado para ser respetuoso con el medio ambiente. No contiene sustancias peligrosas. Por favor, elimínelo correctamente de acuerdo con las regulaciones locales. Para más información, visite nuestro sitio web: www.luv.com

NOTICE FCIS (USA)

FCC Notice (USA): This device complies with the FCC Rules, Part 15. It may cause interference with other electronic devices. For more information, please visit our website: www.luv.com

NOTICE FCIS (USA)

FCC Notice (USA): This device complies with the FCC Rules, Part 15. It may cause interference with other electronic devices. For more information, please visit our website: www.luv.com

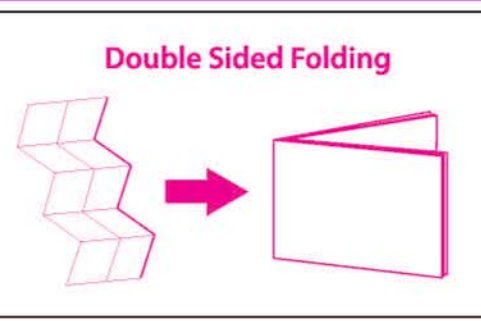
NOTICE FCIS (USA)

FCC Notice (USA): This device complies with the FCC Rules, Part 15. It may cause interference with other electronic devices. For more information, please visit our website: www.luv.com

NOTICE FCIS (USA)

FCC Notice (USA): This device complies with the FCC Rules, Part 15. It may cause interference with other electronic devices. For more information, please visit our website: www.luv.com

QSG DIRECTIONS



GLUE

GLUE

iLuv®

Sleeve artwork
Paper weight 150g

QSG artwork (Staple binding)
Paper weight 100g

100%

(FRONT)

(BACK)

FOLDING LINES

FOLDING LINES

Thank you for your purchase. Visit our website at www.iluv.com or support/Luv.com for more information. Please register your product at www.luv.com

Luv® TimeShaker® and Greenlight® trademarks are the exclusive property of iLuv Electronics Corp. and are registered with the U.S. Patent and Trademark Office, and may be registered or pending registration in other countries. All other Luv® trademarks, service marks, and logos may be registered or pending registration in the U.S. or in other countries. All other trademarks or registered trademarks are the property of their respective owners. © 2014 Luv Creative Technology, Inc. Made in China.

Luv Creative Technology
2 Harbor Park Drive
Port Washington, NY 11050

Luv Creative Technology
2 Harbor Park Drive
Port Washington, NY 11050

Luv Creative Technology
2 Harbor Park Drive
Port Washington, NY 11050

Luv Creative Technology
2 Harbor Park Drive
Port Washington, NY 11050