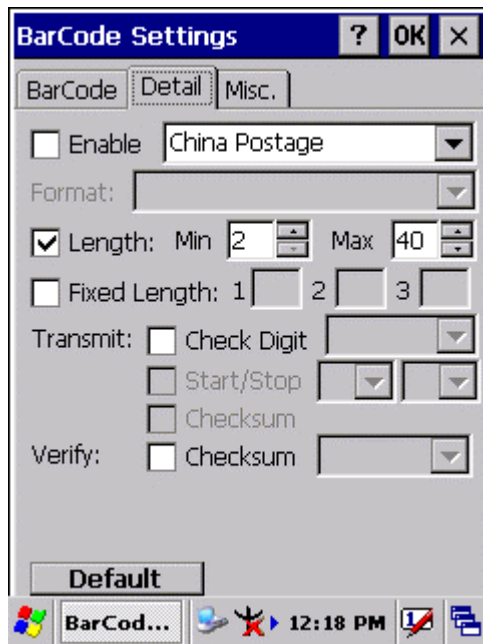
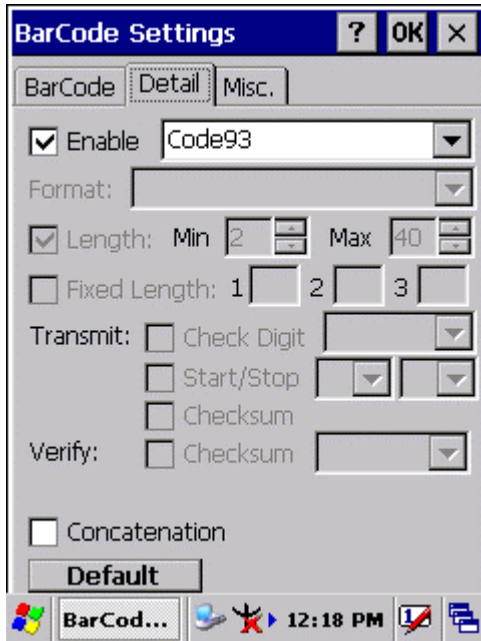


### 3.2.3.3 China Postage



<input type="checkbox"/> <b>Enable</b>	<input checked="" type="checkbox"/>	Enable China Postage
	<input type="checkbox"/>	Disable China Postage
<input type="checkbox"/> <b>Length</b>	<input checked="" type="checkbox"/>	<b>Min</b> Length can be set from <b>2</b> to <b>80</b> <b>Max</b> Length can be set from <b>2</b> to <b>80</b>
	<input type="checkbox"/>	
<input type="checkbox"/> <b>Fixed Length</b>	<input checked="" type="checkbox"/>	<b>Fixed Length 1</b> 2-80 <b>Fixed Length 2</b> 2-80 <b>Fixed Length 3</b> 2-80
	<input type="checkbox"/>	
<input type="checkbox"/> <b>Check Digit</b>	<input checked="" type="checkbox"/>	<b>Check Digit</b> transmit
	<input type="checkbox"/>	<b>Check Digit</b> doesn't transmit
Verify	<input checked="" type="checkbox"/>	Enabled
<input type="checkbox"/> <b>Checksum</b>	<input type="checkbox"/>	Disabled
<b>Default</b>		Tap the " <b>Default</b> " tab to return back to default setting

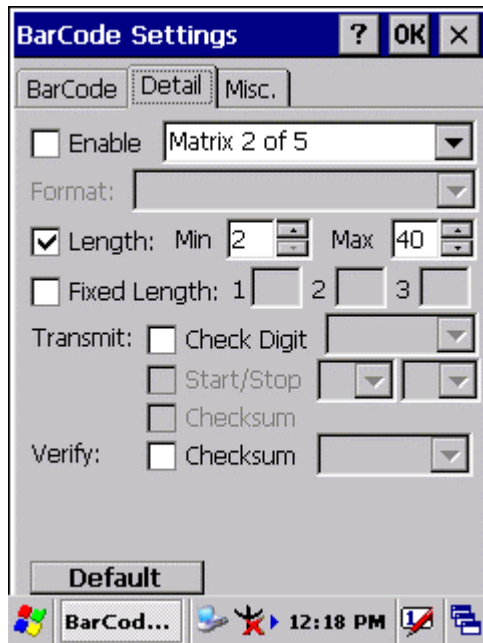
### 3.2.3.4 Code93



Code93 is a variable length, continuous symbology that uses four element widths.

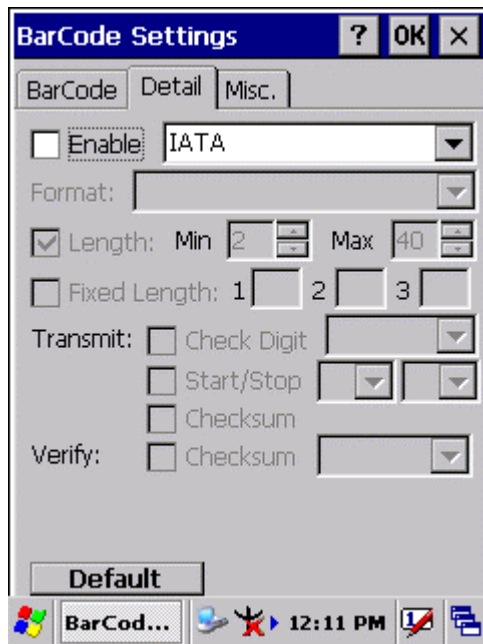
<input type="checkbox"/> <b>Enable</b>	<input checked="" type="checkbox"/>	Enable Code93
	<input type="checkbox"/>	Disable Code93
<input type="checkbox"/> <b>Concatenation</b>	<input checked="" type="checkbox"/>	Enable Concatenation
	<input type="checkbox"/>	Disable Concatenation
<b>Default</b>		Tap the “ <b>Default</b> ” tab to return back to default setting

### 3.2.3.5 Matrix 2 of 5



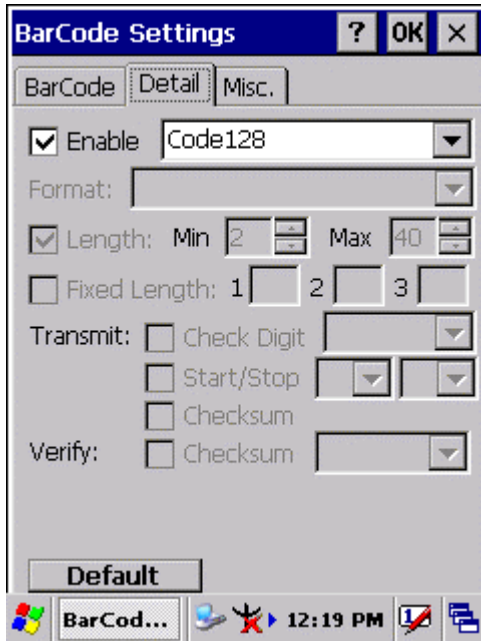
<input type="checkbox"/> <b>Enable</b>	<input checked="" type="checkbox"/>	Enable Matrix 2 of 5
	<input type="checkbox"/>	Disable Matrix 2 of 5
<input type="checkbox"/> <b>Length</b>	<input checked="" type="checkbox"/>	<b>Min</b> Length can be set from <b>2</b> to <b>80</b> <b>Max</b> Length can be set from <b>2</b> to <b>80</b>
	<input type="checkbox"/>	
<input type="checkbox"/> <b>Fixed Length</b>	<input checked="" type="checkbox"/>	<b>Fixed Length 1</b> 2-80 <b>Fixed Length 2</b> 2-80 <b>Fixed Length 3</b> 2-80
	<input type="checkbox"/>	
<input type="checkbox"/> <b>Check Digit</b>	<input checked="" type="checkbox"/>	<b>Check Digit</b> transmit
	<input type="checkbox"/>	<b>Check Digit</b> doesn't transmit
Verify	<input checked="" type="checkbox"/>	Enabled
<input type="checkbox"/> <b>Checksum</b>	<input type="checkbox"/>	Disabled
<b>Default</b>		Tap the " <b>Default</b> " tab to return back to default setting

### 3.2.3.6 IATA



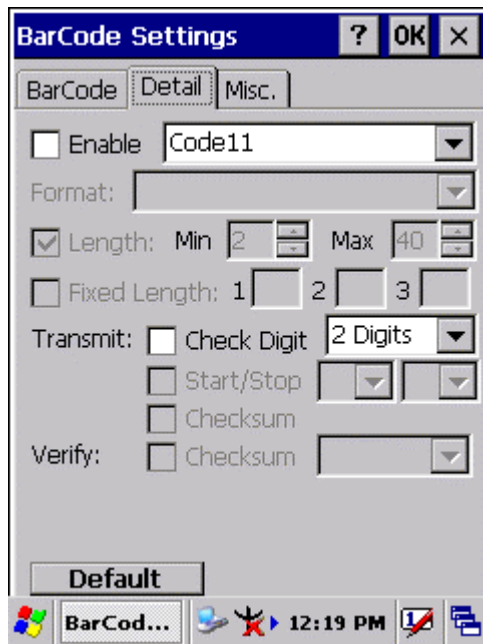
<input type="checkbox"/> <b>Enable</b>	<input checked="" type="checkbox"/>	Enable IATA
	<input type="checkbox"/>	Disable IATA
<b>Default</b>		Tap the “ <b>Default</b> ” tab to return back to default setting

### 3.2.3.7 Code128



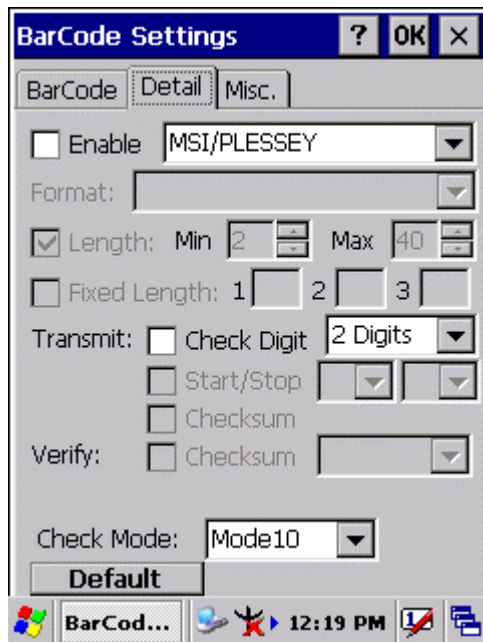
<input type="checkbox"/> <b>Enable</b>	<input checked="" type="checkbox"/>	Enable Code128
	<input type="checkbox"/>	Disable Code128
<b>Default</b>		Tap the “ <b>Default</b> ” tab to return back to default setting

### 3.2.3.7 Code11



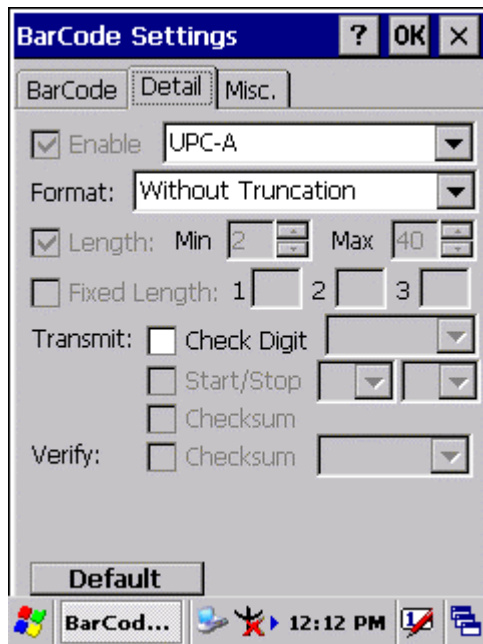
<input type="checkbox"/> <b>Enable</b>	<input checked="" type="checkbox"/>	Enable Code11
	<input type="checkbox"/>	Disable Code11
<input type="checkbox"/> <b>Check Digit</b>	<input checked="" type="checkbox"/>	Check Digit Transmit
		Check digit verification can select “ <b>1 Digit</b> ” or “ <b>2 Digits</b> ”
	<input type="checkbox"/>	Check Digit doesn’t transmit
<b>Default</b>		Tap the “ <b>Default</b> ” tab to return back to default setting

### 3.2.3.8 MSI/PLESSEY



<input type="checkbox"/> <b>Enable</b>	<input checked="" type="checkbox"/>	Enable MSI/PLESSEY
	<input type="checkbox"/>	Disable MSI/PLESSEY
<input type="checkbox"/> <b>Check Digit</b>	<input checked="" type="checkbox"/>	Check Digit transmit
		Check digit verification can select “ <b>1 Digit</b> ” or “ <b>2 Digits</b> ”
	<input type="checkbox"/>	Check Digit doesn’t transmit
<b>Check Mode</b>		One of “ <b>Mode10</b> ”, “ <b>Mode10-10</b> ” and “ <b>Mode11-10</b> ” can be selected from the pull-down list.
<b>Default</b>		Tap the “ <b>Default</b> ” tab to return back to default setting

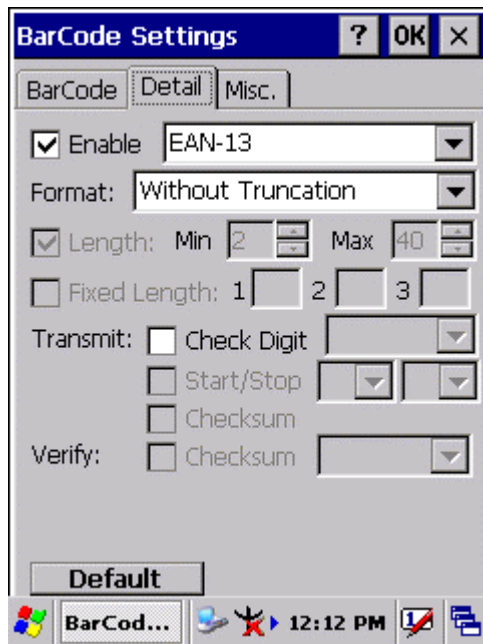
### 3.2.3.9 UPC-A



<input type="checkbox"/> <b>Enable</b>	<input checked="" type="checkbox"/>	Enable UPC-A
	<input type="checkbox"/>	Disable UPC-A
<b>Format</b>		Only one of the “ <b>Without Truncation</b> ”, “ <b>Truncate Leading Zero</b> ”, “ <b>Truncate Leading Digit</b> ” and “ <b>Truncate Leading Zero and Digit</b> ” can be selected from the pull-down list.
<b>Check Digit</b>	<input checked="" type="checkbox"/>	Check Digit transmit
	<input type="checkbox"/>	Check Digit doesn’t transmit
<b>Default</b>		Tap the “ <b>Default</b> ” tab to return back to default setting

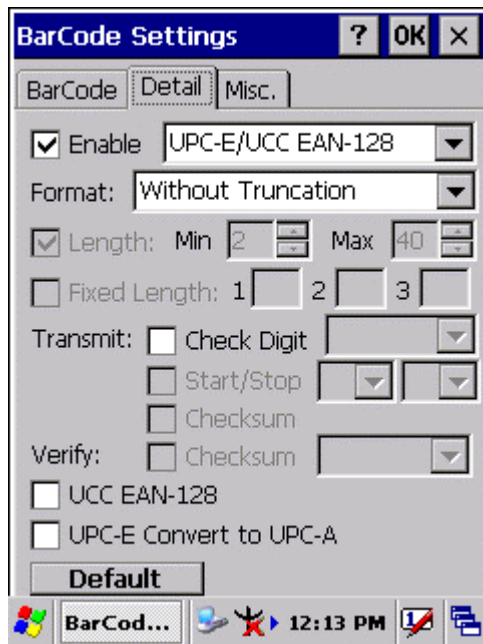


### 3.2.3.10 EAN-13



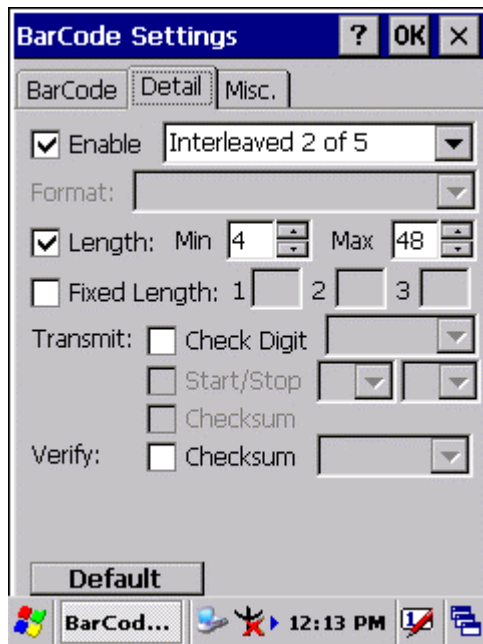
<input type="checkbox"/> <b>Enable</b>	<input checked="" type="checkbox"/>	Enable EAN-13
	<input type="checkbox"/>	Disable EAN-13
<b>Format</b>		Only one of the “ <b>Without Truncation</b> ”, “ <b>Truncate Leading Zero</b> ”, “ <b>Truncate Leading Digit</b> ” and “ <b>Truncate Leading Zero and Digit</b> ” can be selected from the pull-down list.
<b>Check Digit</b>	<input checked="" type="checkbox"/>	Check Digit transmit
	<input type="checkbox"/>	Check Digit doesn’t transmit
<b>Default</b>		Tap the “ <b>Default</b> ” tab to return back to default setting

### 3.2.3.11 UPC-E/UCC EAN-128



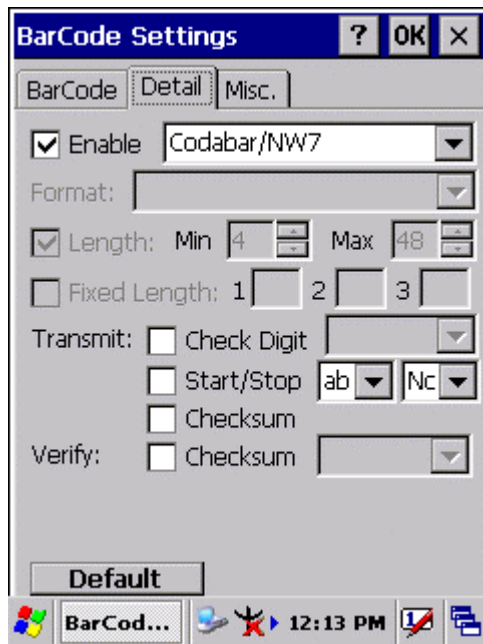
<input type="checkbox"/> <b>Enable</b>	<input checked="" type="checkbox"/>	Enable UPC-E/UCC EAN-128
	<input type="checkbox"/>	Disable UPC-E/UCC EAN-128
<b>Format</b>		Only one of the “ <b>Without Truncation</b> ” and “ <b>Truncate Leading Zero</b> ” can be selected from the pull-down list.
<b>Check Digit</b>	<input checked="" type="checkbox"/>	Check Digit transmit
	<input type="checkbox"/>	Check Digit doesn’t transmit
<b>Enable UCC EAN-128</b>	<input checked="" type="checkbox"/>	Enable <b>UCC EAN-128</b>
	<input type="checkbox"/>	Disable <b>UCC EAN-128</b>
<b>Enable UPC-E</b>	<input checked="" type="checkbox"/>	Enable <b>UPC-E Convert to UPC-A</b>
<b>Convert to UPC-A</b>	<input type="checkbox"/>	Disable <b>UPC-E Convert to UPC-A</b>
<b>Default</b>		Tap the “ <b>Default</b> ” tab to return back to default setting

### 3.2.3.12 Interleaved 2 of 5



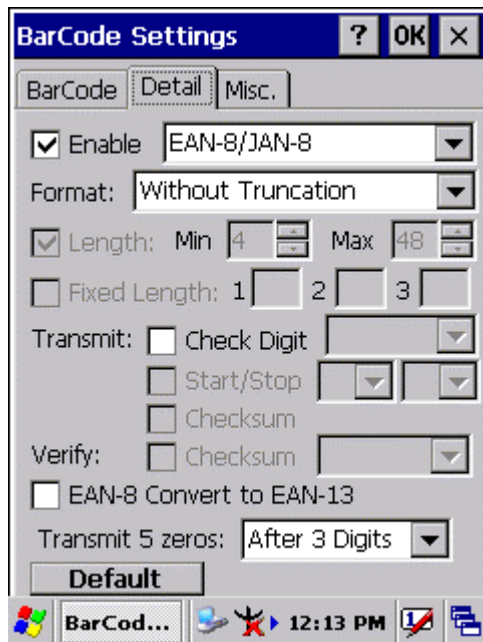
<input type="checkbox"/> <b>Enable</b>	<input checked="" type="checkbox"/>	Enable Interleaved 2 of 5
	<input type="checkbox"/>	Disable Interleaved 2 of 5
<input type="checkbox"/> <b>Length</b>	<input checked="" type="checkbox"/>	<b>Min</b> Length can be set from <b>2</b> to <b>96</b> <b>Max</b> Length can be set from <b>2</b> to <b>96</b>
	<input type="checkbox"/>	
<input type="checkbox"/> <b>Fixed Length</b>	<input checked="" type="checkbox"/>	<b>Fixed Length 1</b> 2-96 <b>Fixed Length 2</b> 2-96 <b>Fixed Length 3</b> 2-96
	<input type="checkbox"/>	
<input type="checkbox"/> <b>Check Digit</b>	<input checked="" type="checkbox"/>	Check Digit transmit
	<input type="checkbox"/>	Check Digit doesn't transmit
Verify	<input checked="" type="checkbox"/>	Enabled
<input type="checkbox"/> <b>Checksum</b>	<input type="checkbox"/>	Disabled
<b>Default</b>		Tap the " <b>Default</b> " tab to return back to default setting

### 3.2.3.13 Codabar/NW7



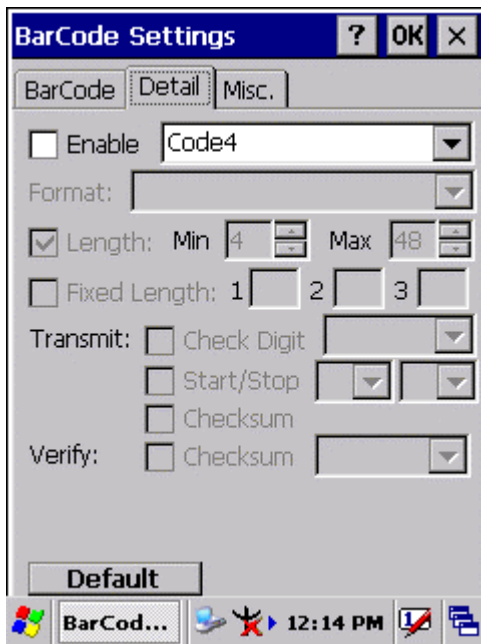
<input type="checkbox"/> <b>Enable</b>	<input checked="" type="checkbox"/>	Enable Codabar/NW7
	<input type="checkbox"/>	Disable Codabar/NW7
<input type="checkbox"/> <b>Start/Stop</b>	<input checked="" type="checkbox"/>	<b>Start/Stop</b> transmit
	<input type="checkbox"/>	<b>Start/Stop</b> doesn't transmit ?????
<input type="checkbox"/> <b>Checksum</b>	<input checked="" type="checkbox"/>	Checksum transmit
	<input type="checkbox"/>	Checksum doesn't transmit
Verify	<input checked="" type="checkbox"/>	Enabled
<input type="checkbox"/> <b>Checksum</b>	<input type="checkbox"/>	Disabled
<b>Default</b>		Tap the " <b>Default</b> " tab to return back to default setting

### 3.2.3.14 EAN-8/JAN-8



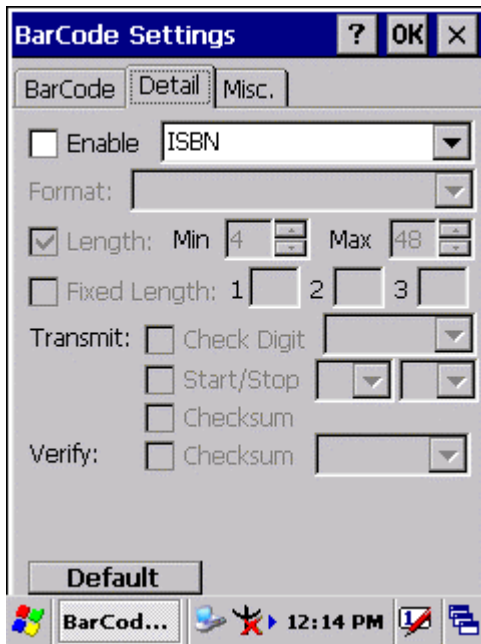
<input type="checkbox"/> <b>Enable</b>	<input checked="" type="checkbox"/>	Enable EAN-8/JAN-8
	<input type="checkbox"/>	Disable EAN-8/JAN-8
<b>Format</b>		Only one format of “ <b>Without Truncation</b> ” and “ <b>Truncate Leading Zero</b> ” can be selected from the pull-down list.
<input type="checkbox"/> <b>Check Digit</b>	<input checked="" type="checkbox"/>	Check Digit transmit
	<input type="checkbox"/>	Check Digit doesn’t transmit
<b>Verify</b>	<input checked="" type="checkbox"/>	Enabled
<input type="checkbox"/> <b>Checksum</b>	<input type="checkbox"/>	Disabled
<input type="checkbox"/> <b>Enable EAN-8</b>	<input checked="" type="checkbox"/>	Enable EAN-8 Convert to EAN-13
<b>Convert to EAN-13</b>	<input type="checkbox"/>	Disable EAN-8 Convert to EAN-13
<b>Transmit 5 zeros</b>		One kind of “ <b>Before BarCode</b> ” and “ <b>After 3 Digits</b> ” is selected from the pull-down list.
<b>Default</b>		Tap the “ <b>Default</b> ” tab to return back to default setting

### 3.2.3.15 Code4



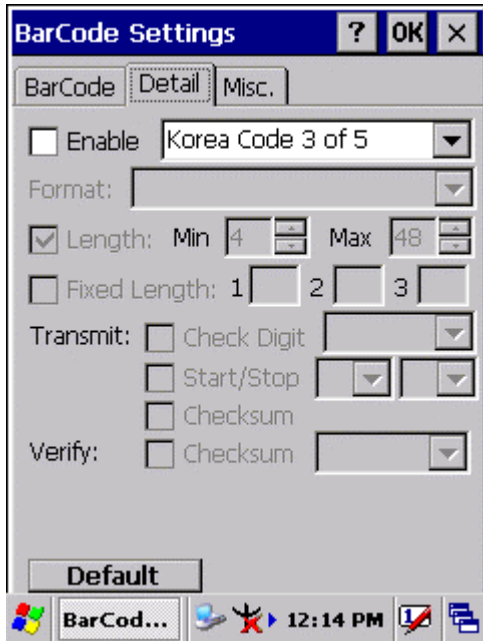
<input type="checkbox"/> <b>Enable</b>	<input checked="" type="checkbox"/>	Enable Code4
	<input type="checkbox"/>	Disable Code4
<b>Default</b>		Tap the “ <b>Default</b> ” tab to return back to default setting

### 3.2.3.16 ISBN



<input type="checkbox"/> <b>Enable</b>	<input checked="" type="checkbox"/>	Enable ISBN
	<input type="checkbox"/>	Disable ISBN
<b>Default</b>		Tap the “ <b>Default</b> ” tab to return back to default setting

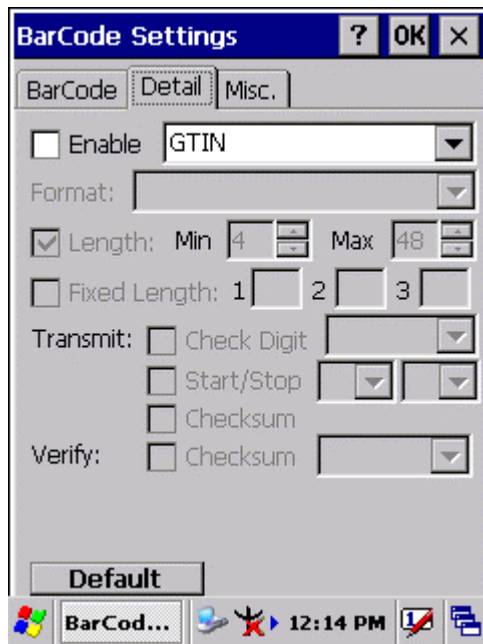
### 3.2.3.17 Korea Code 3 of 5



<input type="checkbox"/> <b>Enable</b>	<input checked="" type="checkbox"/>	Enable Korea Code 3 of 5
	<input type="checkbox"/>	Disable Korea Code 3 of 5
<b>Default</b>		Tap the “ <b>Default</b> ” tab to return back to default setting

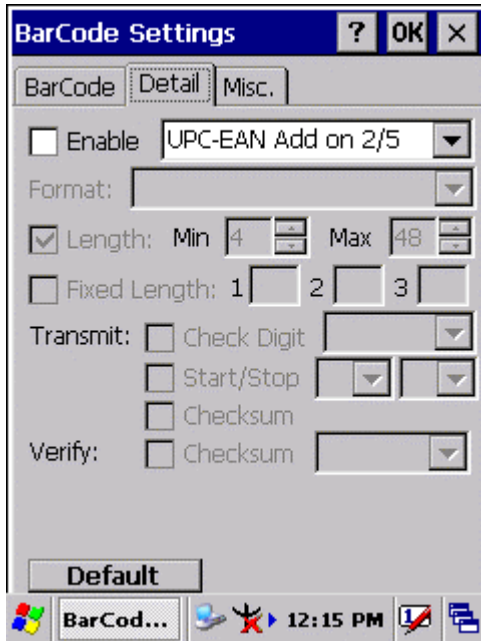


### 3.2.3.18 GTIN



<input type="checkbox"/> <b>Enable</b>	<input checked="" type="checkbox"/>	Enable GTIN
	<input type="checkbox"/>	Disable GTIN
<b>Default</b>		Tap the “ <b>Default</b> ” tab to return back to default setting

### 3.2.3.19 UOC-EAN Add on 2/5



<input type="checkbox"/> <b>Enable</b>	<input checked="" type="checkbox"/>	Enable UPC-EAN Add on 2/5
	<input type="checkbox"/>	Disable UPC-EAN Add on 2/5
<b>Default</b>		Tap the “ <b>Default</b> ” tab to return back to default setting

### 3.2.4 Brightness

**Table 3-3 Brightness**

ICON	ITEM & FUNCTION					
Brightness	<ul style="list-style-type: none"> <li>● <b>“Brightness Control” Applet ( Figure 3-4-1) :</b></li> </ul>					
	<ul style="list-style-type: none"> <li>✓ Control the LCD brightness and KEYPAD Brightness</li> <li>✓ Tap the <b>“LCD brightness”</b> Tab, and then tune the LCD brightness by tapping <b>right-arrow &amp; left-arrow</b>. Can also tune the LCD brightness by pressing <b>right-direction key</b> or <b>left-direction key</b>.</li> <li>✓ Tap the <b>“KEYPAD Brightness”</b> Tab, and then tune the Keypad brightness by tapping <b>right-arrow &amp; left-arrow</b>. Can also tune the Keypad brightness by pressing <b>right-direction key</b> or <b>left-direction key</b>.</li> </ul>					
	<ul style="list-style-type: none"> <li>● <b>“Backlight Timeout” Applet( Figure 3-4-2~ Figure 3-4-5):</b></li> </ul>					
	<ul style="list-style-type: none"> <li>✓ Select one power source from the pull-down list, <b>“AC power”</b> &amp; <b>“Battery”</b> of Power Scheme.</li> <li>✓ Select the timeout duration from another pull-down list of <b>“Turn off backlight after”</b> Tab. &lt; Never, 15 seconds, 30 seconds, 1 minutes, 2 minutes, 5 minutes &gt;</li> <li>✓ The Backlight will be turned off after the selected timeout value</li> <li>✓ <input type="checkbox"/> <b>Dim backlight after 20 seconds of idleness</b></li> </ul>					
	<table border="1"> <thead> <tr> <th data-bbox="416 1279 576 1323">ITEM</th> <th data-bbox="576 1279 1345 1323">Function</th> </tr> </thead> <tbody> <tr> <td data-bbox="416 1323 576 1420"><input type="checkbox"/></td> <td data-bbox="576 1323 1345 1420">The brightness of backlight keep the same brightness even though system is already idle.</td> </tr> <tr> <td data-bbox="416 1420 576 1565"><input checked="" type="checkbox"/></td> <td data-bbox="576 1420 1345 1565">The brightness of backlight will change to a little dark during system idle situation after 20 seconds when the system isn't running any action.</td> </tr> </tbody> </table>	ITEM	Function	<input type="checkbox"/>	The brightness of backlight keep the same brightness even though system is already idle.	<input checked="" type="checkbox"/>
ITEM	Function					
<input type="checkbox"/>	The brightness of backlight keep the same brightness even though system is already idle.					
<input checked="" type="checkbox"/>	The brightness of backlight will change to a little dark during system idle situation after 20 seconds when the system isn't running any action.					

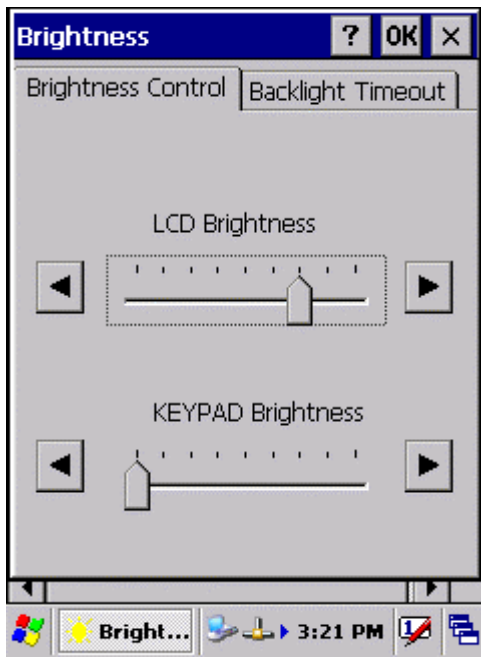


Figure 3-4-1

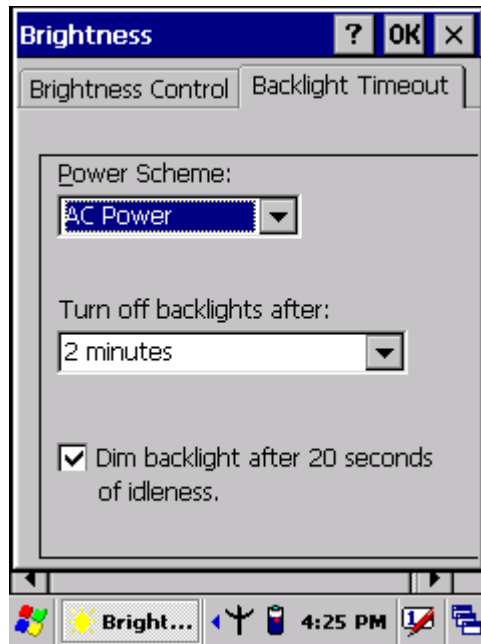


Figure 3-4-2

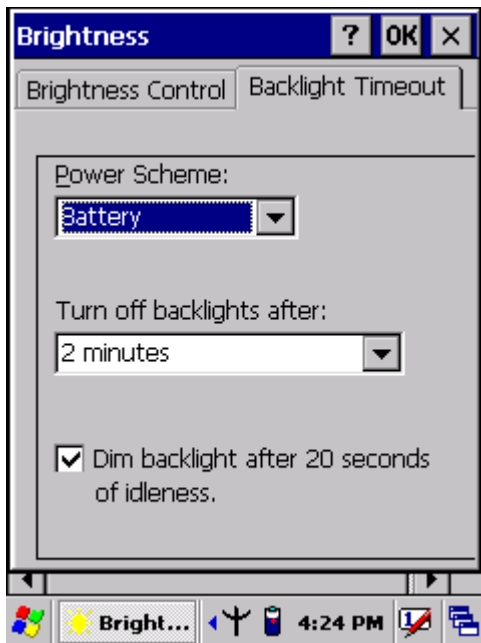


Figure 3-4-3

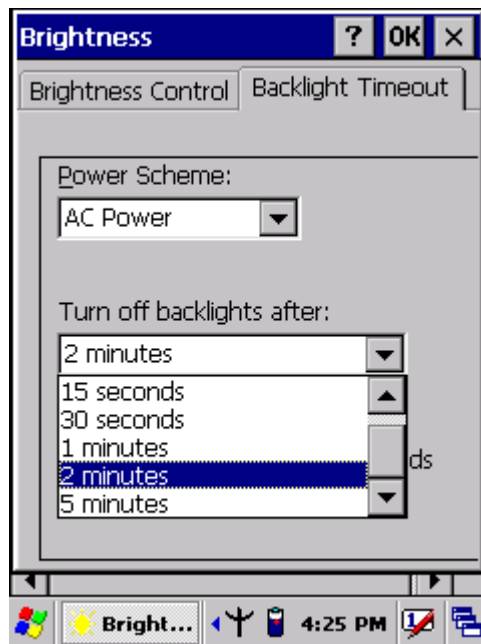


Figure 3-4-4

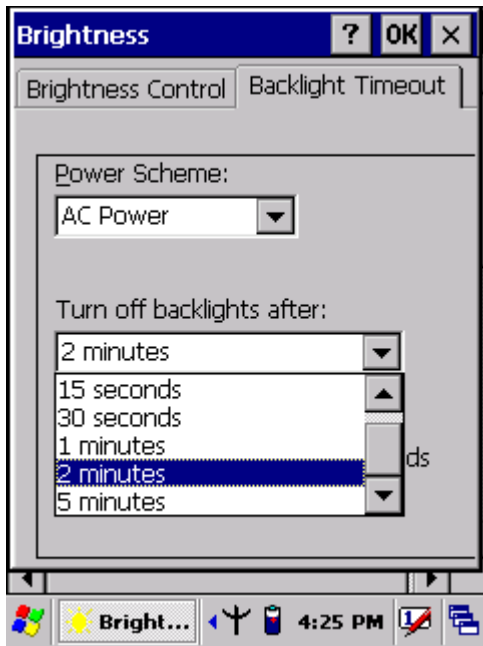


Figure 3-4-5

### 3.2.5 Certificates

Certificates are used by some applications for establishing trust and for secure communications.

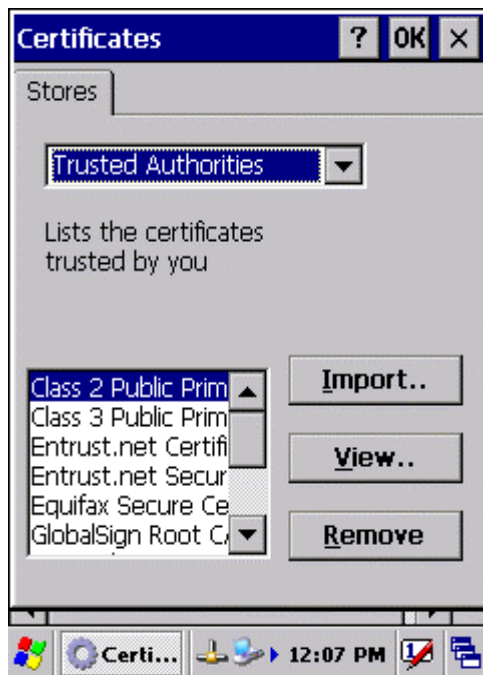
Certificates are signed and issued by certificate authorities and are valid for a prescribed period of time. Windows CE manages multiple certificate stores.

Table 3-4 Certificates(A)

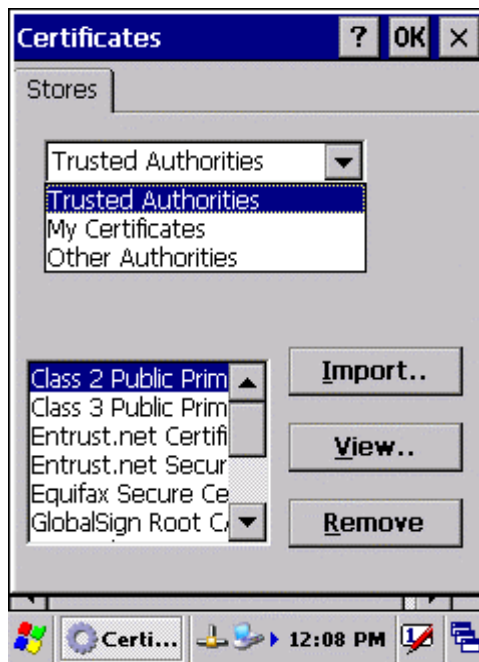
ICON	ITEM & FUNCTION
Certificates	<ul style="list-style-type: none"> <li>• “Store” Tab ( Figure 3-5-1 ) :</li> <li>✓ In the Stores tab, select the certificate store you wish to view or modify from the drop-down list (Figure 3-5-2).</li> <li>✓ The “<b>Trusted Authorities</b>” store lists the top-level certificates for authorities you trust.( Figure 3-5-2 , Figure 3-5-3)</li> <li>✓ The “<b>My Certificates</b>” store contains your personal certificates, which you use to identify yourself.</li> <li>✓ Intermediate certificate authorities that help establish a chain of trust are stored in the “<b>Other Authorities</b>” store.</li> </ul>

**Table 3-4 Certificates(B)**

ICON	ITEM & FUNCTION
Certificates	<ul style="list-style-type: none"> <li>• <b>“Store” Tab :</b></li> <li>✓ To add a certificate or associated private key to the selected store, select <b>“Import”</b> (Figure 3-5-4).</li> <li>✓ To view more details of the selected certificate, such as the expanded name or expiration date, choose <b>“View”</b>.</li> <li>✓ To delete the selected certificate from the store, choose <b>“Remove”</b>.</li> </ul>



**Figure 3-5-1**



**Figure 3-5-2**



Figure 3-5-3

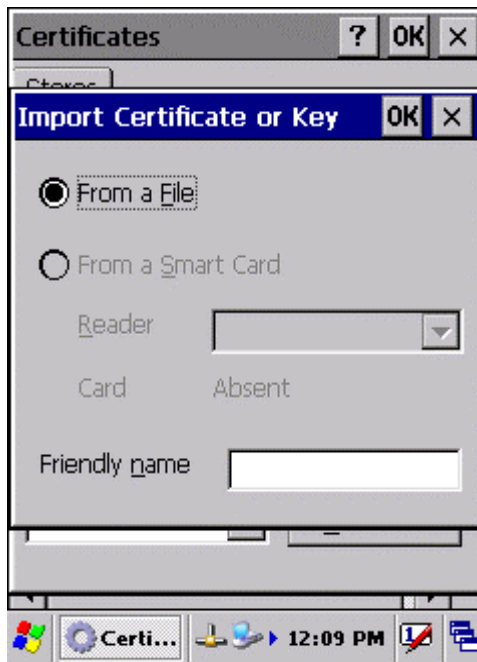


Figure 3-5-4

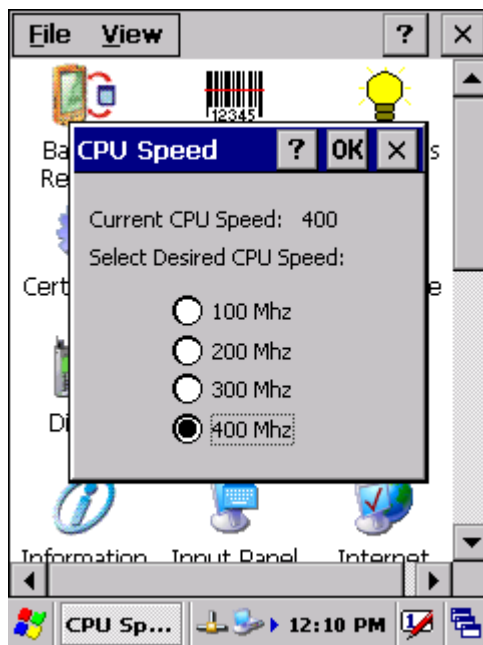


Figure 3-5-5

### 3.2.6 CPU Speed

**Table 3-5 CPU Speed**

ICON	ITEM & FUNCTION
CPU Speed	<ul style="list-style-type: none"><li>● <b>“CPU Speed” Tab :( Figure 3-6)</b></li><li>✓ Provide the information of current CPU Speed.</li><li>✓ To change the CPU Speed , select the desired CPU speed you want. <b>&lt; 100 MHz, 200MHz, 300MHz, 400MHz &gt;</b></li></ul>



**Figure 3-6**



### 3.2.7 Date/Time

**Table 3-6 Date/Time**

ICON	ITEM & FUNCTION
Date/Time	<ul style="list-style-type: none"> <li>● <b>“Date/Time” Tab : ( Figure 3-6)</b></li> <li>✓ Please see the detail information of <b>2.5.1 Setting Time and Date on P2-22</b></li> </ul>

### 3.2.8 Dialing Properties

**Table 3-7 Dialing properties(A)**

ICON	ITEM & FUNCTION
Dialing Properties	<ul style="list-style-type: none"> <li>● <b>“Dialing Properties” Tab : ( Figure 3-7-1)</b></li> <li>✓ In the <b>When dialing from</b> list, select the <b>“Location”</b> where you want to change settings.(<b>Figure 3-7-2</b>)</li> <li>✓ To create a new location, select <b>“New”</b>. Enter the name of the location, and then select <b>“OK”</b>.(<b>Figure 3-7-3</b>)</li> <li>✓ Enter or edit the area code and local country code as needed.</li> <li>✓ In <b>Dial using</b>, select <b>“Tone dialing”</b> or <b>“Pulse dialing”</b>. Most phone lines are tone.</li> <li>✓ To automatically disable call waiting, select <input type="checkbox"/> <b>Disable call waiting by dialing”</b> , select the appropriate number sequence in the list, or enter a new sequence.</li> <li>● <b>Editing dialing patterns ( Figure 3-7-4)</b></li> <li>✓ Using the codes listed in the topic, revise the dialing patterns as needed.</li> </ul> <p><b>Notes:</b></p> <ul style="list-style-type: none"> <li>■ If you need to use character other than the ones listed here, use manual dialing.</li> <li>■ Hyphens and spaces in dialing strings are ignored.</li> <li>■ Some modems may not respond to the following characters, even though your device lets you add them to the dial string.</li> </ul>

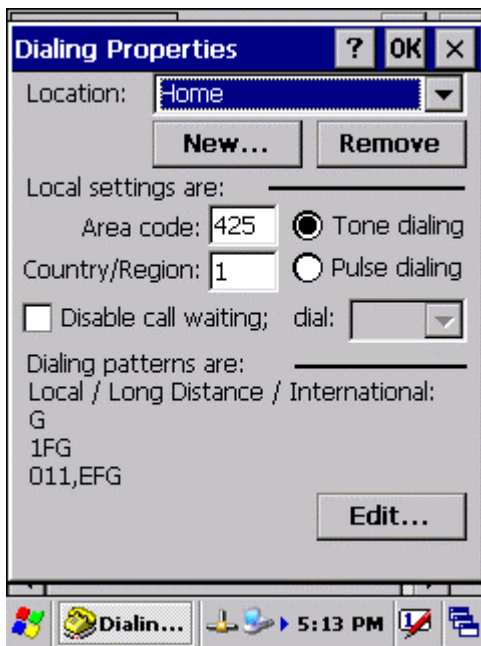


Figure 3-7-1



Figure 3-7-2

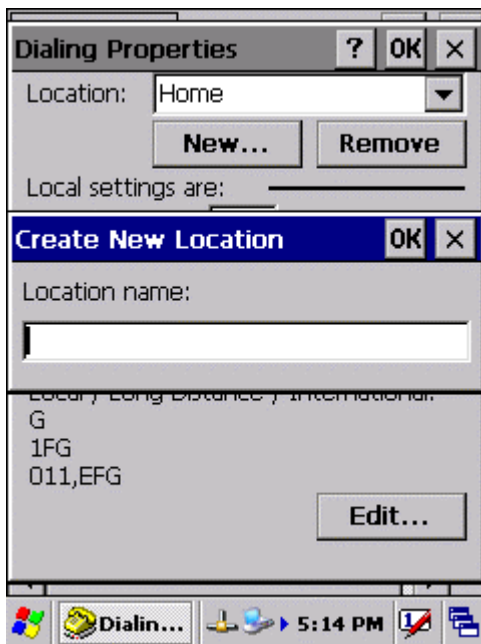


Figure 3-7-3

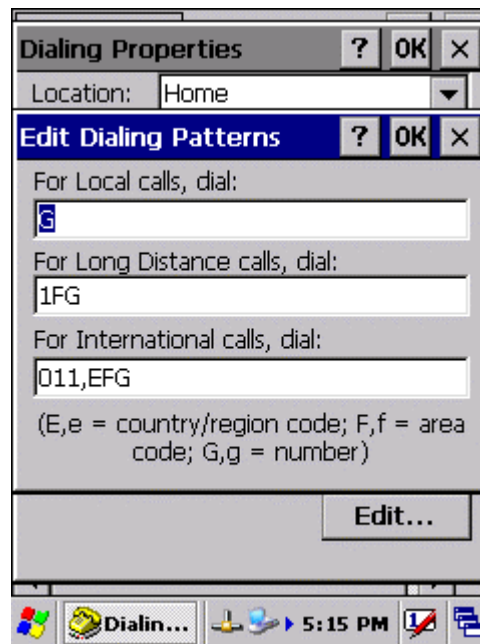


Figure 3-7-4

### 3.2.9 Display Properties

**Table 3-8 Display properties(A)**

ICON	ITEM & FUNCTION
Display	<ul style="list-style-type: none"> <li>● <b>“Background” Tab :( Figure 3-8-1)</b></li> <li>✓ From the <b>“Image”</b> list, select an image you want as the background of the desktop.(<b>Figure 3-8-2</b>)</li> <li>✓ To locate an image in another folder, select <b>“Browse”</b>.(<b>Figure 3-8-3</b>)</li> <li>✓ To have the image cover the entire background, select “ <input type="checkbox"/> <b>Tile image on background</b>”</li> </ul>
	<ul style="list-style-type: none"> <li>● <b>“Appearance” Tab(Figure 3-8-4)</b></li> <li>✓ Change the color scheme :( <b>Figure 3-8-5</b>)               <ul style="list-style-type: none"> <li>➤ From the” <b>Scheme</b>” list, select a scheme.</li> <li>➤ View your choice in the preview box. If you like the scheme, select <b>“Apply”</b>.</li> </ul> </li> <li>✓ Create a custom color scheme:               <ul style="list-style-type: none"> <li>➤ From the <b>“Item”</b> list, select a display item.</li> <li>➤ From the <b>“Basic colors”</b> list, select a color, and select <b>“OK”</b>.</li> <li>➤ View your color selection(s) in the Preview box.</li> <li>➤ To save the scheme, select <b>“Save”</b>.</li> <li>➤ In the <b>“Save this color scheme as”</b> box, enter a name for the scheme, and select <b>“OK”</b>.</li> <li>➤ Select <b>“Apply”</b>.</li> </ul> </li> </ul>

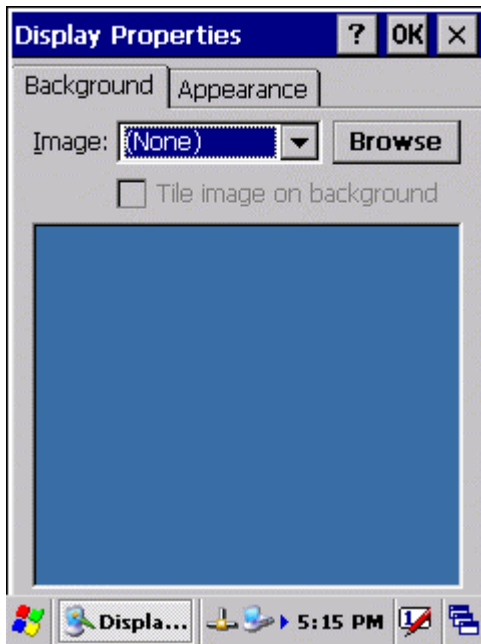


Figure 3-8-1

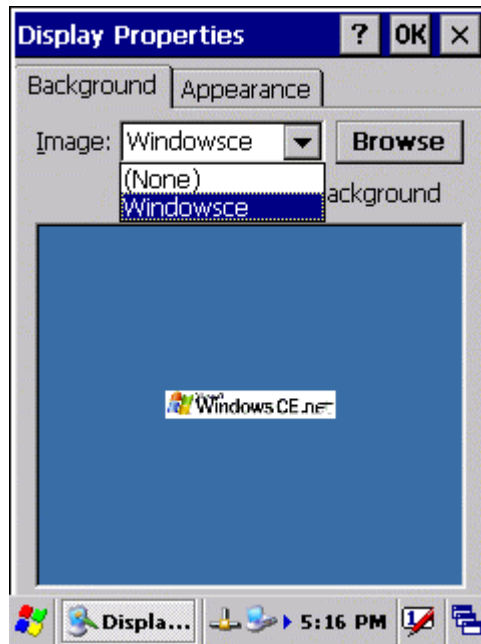


Figure 3-8-2



Figure 3-8-3

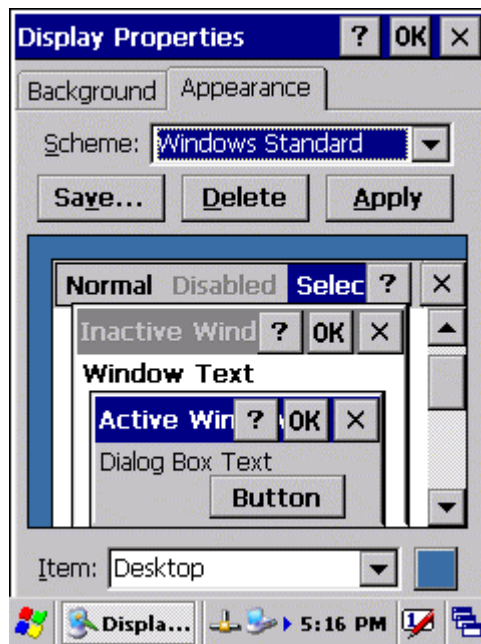


Figure 3-8-4

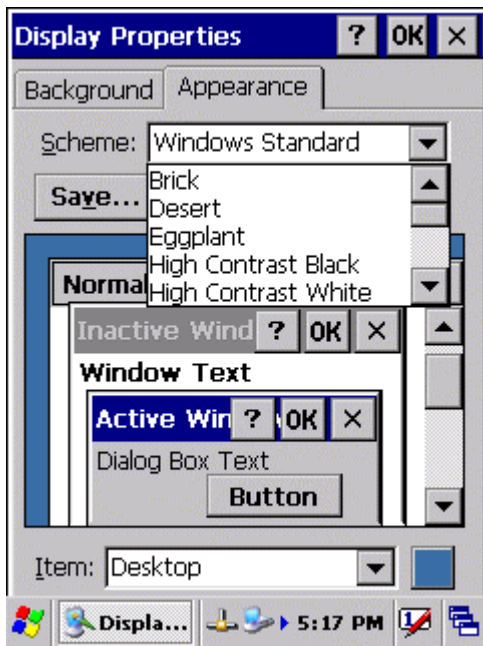




Figure 3-8-5

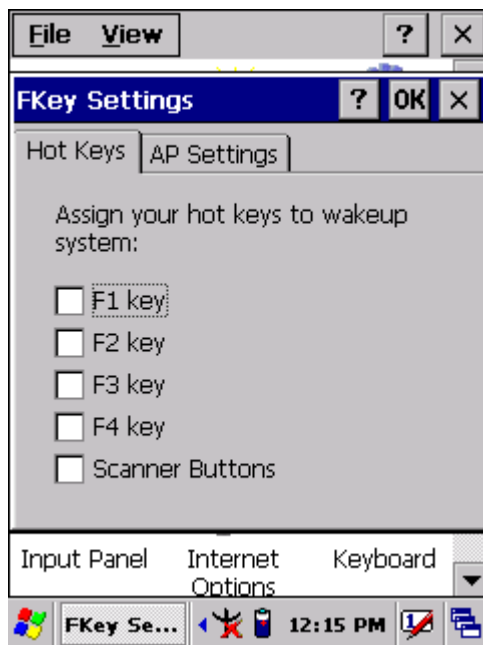
### 3.2.10 Fkey Settings

Table 3-9 FKey (A)

ICON	ITEM & FUNCTION
 <p>FKey Setting</p>	<ul style="list-style-type: none"> <li>● <b>“Hot keys” Tab :( Figure 3-9-1)</b></li> <li>✓ Assign your hot keys to wakeup system after it goes into sleep mode.</li> <li>✓ To select which key(s) that can wakeup system, then, tap <b>“OK”</b>. &lt; <b>F1 key, F2 key, F3 key, F4 key and Scanner Buttons</b>&gt;</li> </ul> <hr/> <ul style="list-style-type: none"> <li>● <b>“AP Settings” Tab(Figure 3-9-2)</b></li> <li>✓ To assign your favorite application program to F1,F2,F3 and F4 hot keys.</li> <li>✓ Choose one of F1, F2, F3 and F4 from pull-down list.(<b>Figure 3-9-3</b>)</li> <li>✓ To tap <b>“ Open”</b> inside <b>“Assign program”</b> applet.</li> <li>✓ Select one application program you want from program list, Then, choose <b>“OK”</b>. (<b>Figure 3-9-4</b>)</li> <li>✓ To tap <b>Default</b> tab to return back to default setting. (<b>Figure 3-9-2</b>)</li> </ul>

**Table 3-9 FKey (B)**

ICON	ITEM & FUNCTION	
 FKey Setting	<ul style="list-style-type: none"> <li>• “AP Settings” Tab(Figure 3-9-2)</li> </ul>	
	<ul style="list-style-type: none"> <li>✓ The default setting for F1~F4:</li> </ul>	
	<b>F Key</b>	<b>Name of Application Program</b>
	<b>F1</b>	<b>Internet Explorer</b>
	<b>F2</b>	<b>WordPad</b>
	<b>F3</b>	<b>Inbox</b>
	<b>F4</b>	<b>My Computer</b>



**Figure 3-9-1**



**Figure 3-9-2**

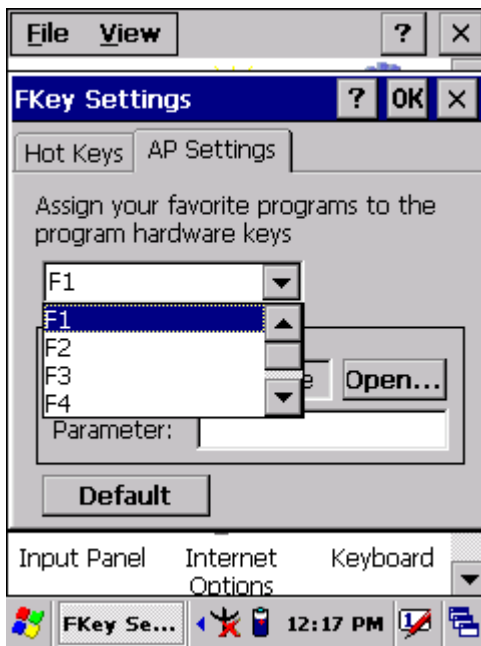


Figure 3-9-3

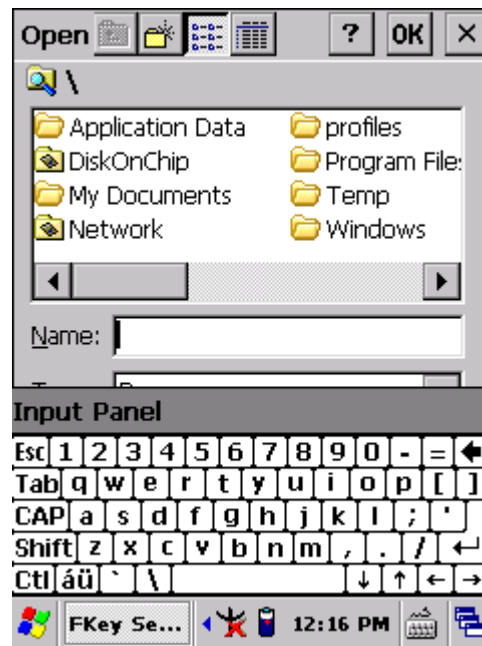



Figure 3-9-4

### 3.2.11 Information

Table 3-10 Information

ICON	ITEM & FUNCTION
 Information	<ul style="list-style-type: none"> <li>• <b>“Information” Tab :</b></li> <li>✓ Provide hardware version, Software version, ROM size, RAM size, Serial No. and Configuration No.</li> </ul>

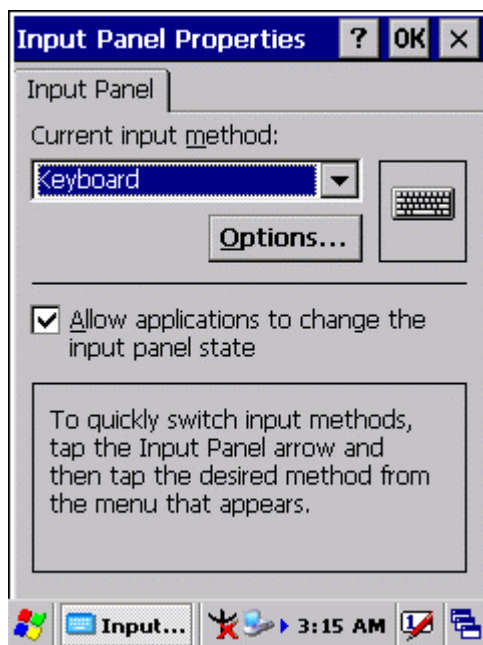
### 3.2.12 Input Panel

Table 3-11 Display properties(A)

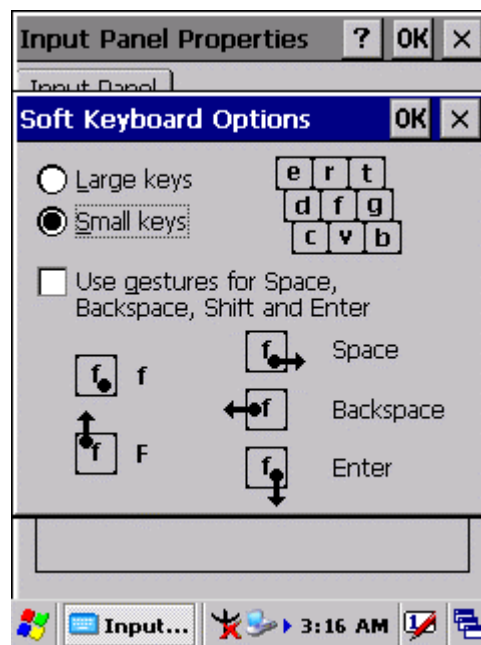
ICON	ITEM & FUNCTION
Input Panel	<ul style="list-style-type: none"> <li>• <b>“Input panel” Tab :( Figure 3-10-1)</b></li> <li>✓ Select the input method you want to change.</li> <li>✓ To change the <b>Soft Keyboard Options</b> , tap <b>“Option” (Figure 3-10-2)</b></li> </ul>

**Table 3-11 Display properties(B)**

ICON	ITEM & FUNCTION
Input Panel	<ul style="list-style-type: none"> <li>● <b>“Input panel” Tab :</b></li> <li>✓ Change the soft keyboard options as desired, selecting from:               <ul style="list-style-type: none"> <li>➢ Large or small keys</li> <li>➢ Using gestures for space, black-space shift, and enter.</li> </ul> </li> <li>✓ To exit the <b>soft keyboard Options</b>, press <b>“OK”</b> on the control bar, or press the <b>&lt;Enter&gt;</b> key on the keypad.</li> <li>✓ To exit the <b>Input Panel</b>, press <b>“OK”</b> on the control bar, or press the <b>&lt;Enter&gt;</b> key on the keypad.</li> </ul>



**Figure 3-10-1**



**Figure 3-10-2**

3.2.13 Internet Options

**Table 3-12 Internet Options(A)**

ICON	ITEM & FUNCTION
Internet Settings	<ul style="list-style-type: none"> <li>● <b>“General” Tab :( Figure 3-11-1)</b></li> <li>✓ Type in the URL of desired start page and the desired search engine. You also change the <b>Cache Size</b>, <b>clear the Cache</b> and <b>Clear the History</b>..</li> </ul>



**Table 3-12 Internet Options(B)**

ICON	ITEM & FUNCTION
Internet Settings	<ul style="list-style-type: none"> <li>● <b>“Connection” Tab : ( Figure 3-11-2)</b></li> </ul>
	<ul style="list-style-type: none"> <li>✓ Modify the network access setting as desired.</li> </ul>
	<ul style="list-style-type: none"> <li>● <b>“Security” Tab (Figure 3-11-3)</b></li> </ul>
	<ul style="list-style-type: none"> <li>✓ Modify the security settings as desired. You can enable any of the following by tapping the checkbox:                             <ul style="list-style-type: none"> <li>➤ Allow cookies</li> <li>➤ Allow TLS 1.0 security</li> <li>➤ Allow SSL 2.0 security</li> <li>➤ Allow SSL 3.0 security</li> <li>➤ Warm when switching across secure and insecure areas.</li> </ul> </li> </ul>
	<ul style="list-style-type: none"> <li>● <b>“Advanced” Tab (Figure 3-11-4)</b></li> </ul>
<ul style="list-style-type: none"> <li>✓ Modify the security settings as desired. You can enable any of the following by tapping the checkbox:                             <ul style="list-style-type: none"> <li>➤ Display Image in pages</li> <li>➤ Play sounds in pages</li> <li>➤ Enable scripting</li> <li>➤ Display a notification about every script error</li> <li>➤ Underline links-                                     <ul style="list-style-type: none"> <li>○ Never</li> <li>○ Always</li> <li>○ Hover</li> </ul> </li> </ul> </li> </ul>	



Figure 3-11-1

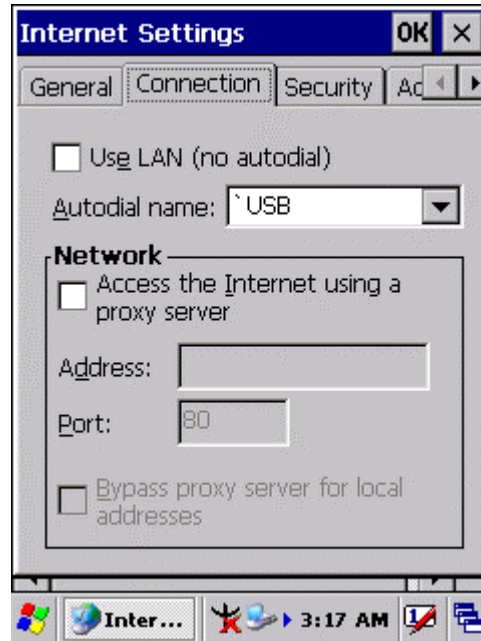


Figure 3-11-2

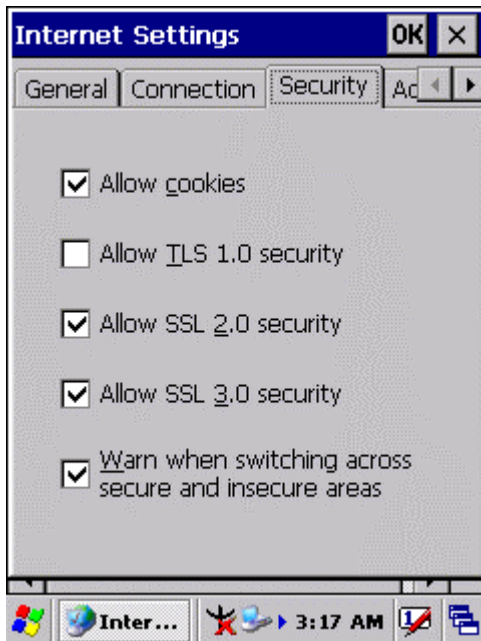


Figure 3-11-3

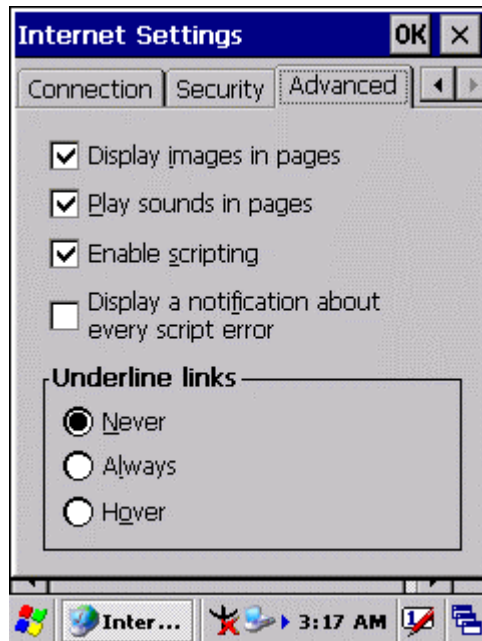
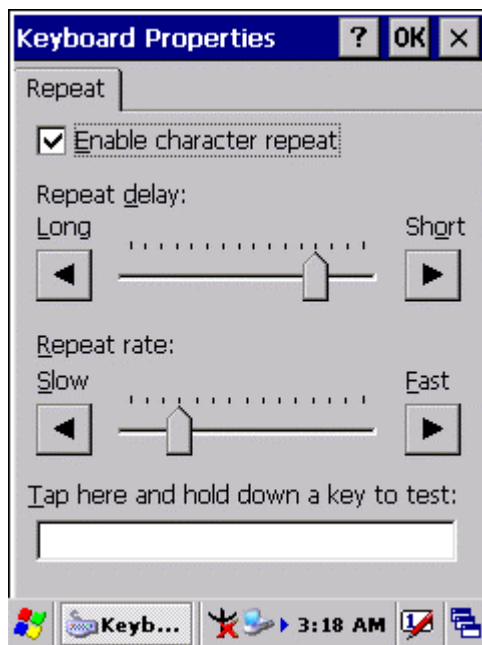


Figure 3-11-4

### 3.2.14 Keyboard

**Table 3-13 Keyboard(A)**

ICON	ITEM & FUNCTION
Keyboard	<ul style="list-style-type: none"><li>• <b>“Repeat” Tab :</b> ( Figure 3-12)</li><li>✓ To change the amount of time between depressions before repetition starts, adjust the <b>Repeat delay</b> slider</li><li>✓ To change the repeat rate, adjust the <b>Repeat rate</b> slider.</li><li>✓ Test your new setting.</li><li>✓ Tap <b>“OK”</b> to exit the <b>“Keyboard”</b> Tab.</li></ul>

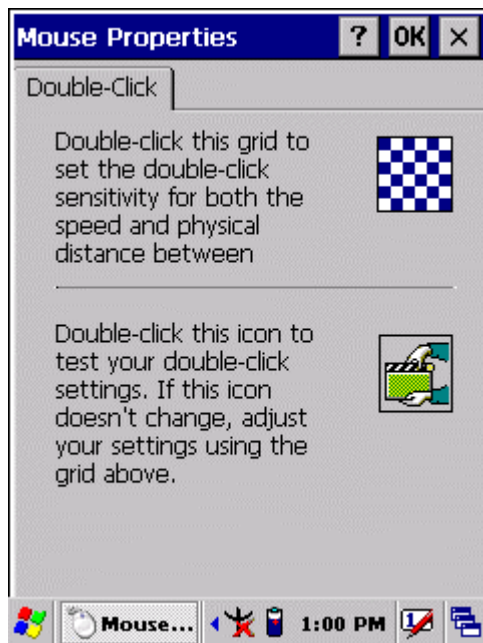


**Figure 3-12**

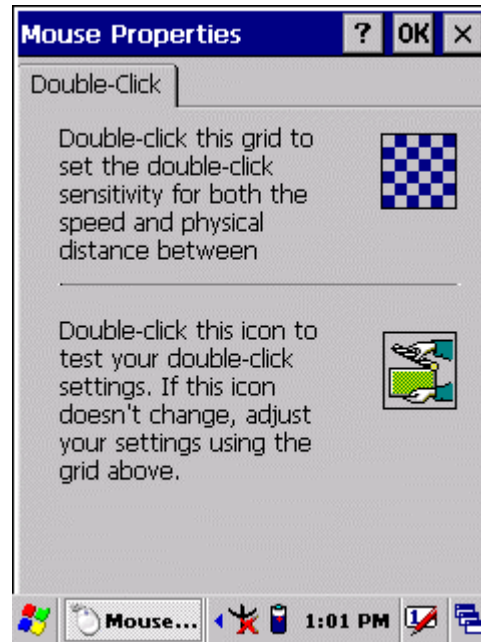
### 3.2.15 Mouse

**Table 3-14 Mouse(A)**

ICON	ITEM & FUNCTION
Mouse	<ul style="list-style-type: none"> <li>• <b>“Double-Click” Tab :</b> ( <b>Figure 3-13-1,Figure 3-13-2</b>)</li> <li>✓ Double-click the checkerboard grid at comfortable speed</li> <li>✓ Double-click the Test icon to test your setting.</li> <li>✓ The function is OK if the figures are changed from Figure 3-13-1 to Figure 3-13-2.</li> <li>✓ To tap <b>“OK”</b> to exit the Mouse tab.</li> </ul>



**Figure 3-13-1**



**Figure 3-13-2**

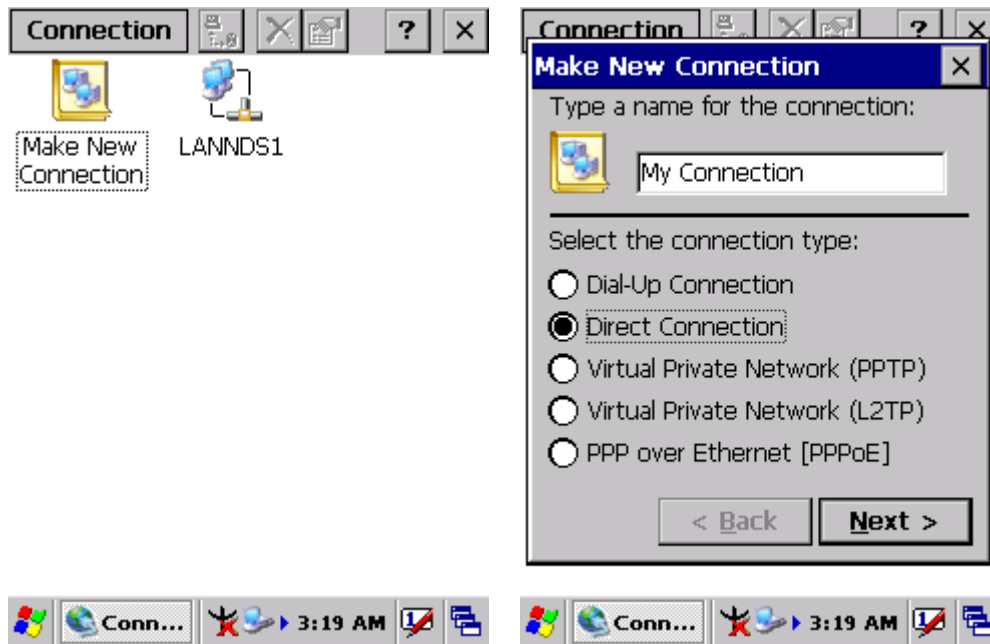
### 3.2.16 Network and Dial-up Connections

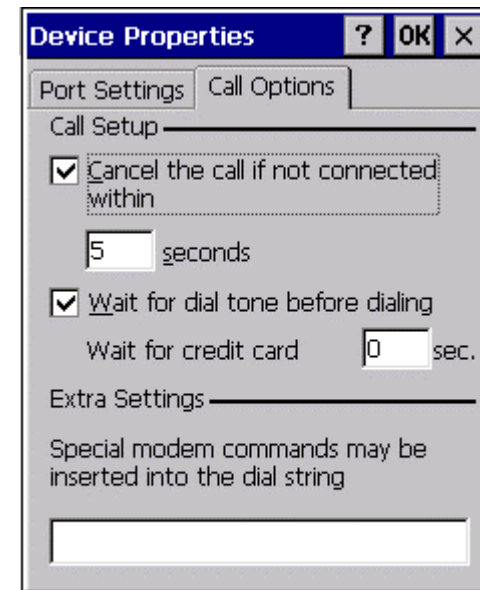
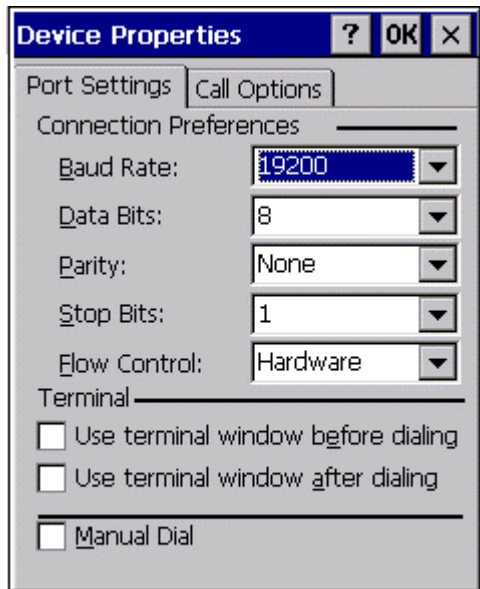
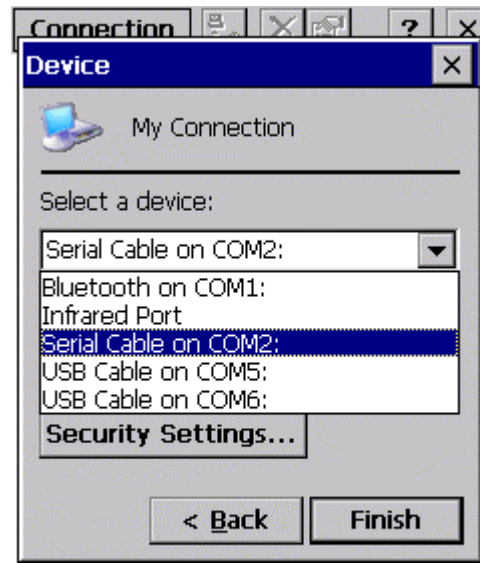
**Table 3-15(A)** Network and Dial-up Connections

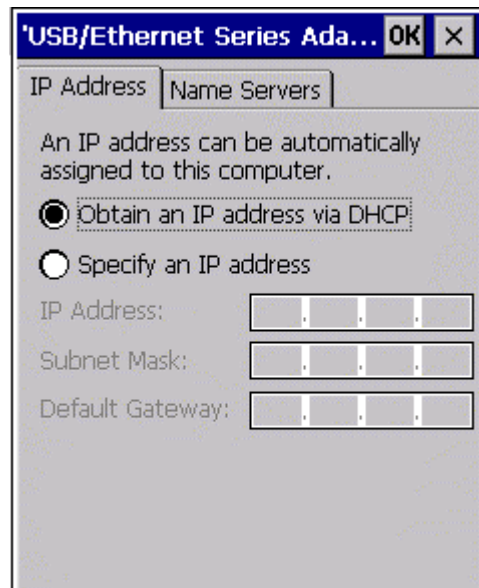
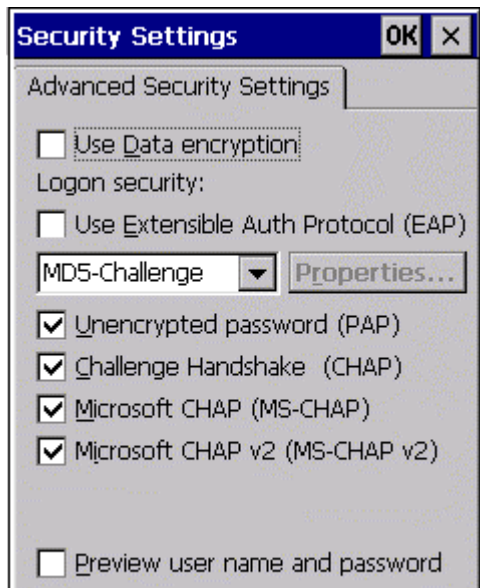
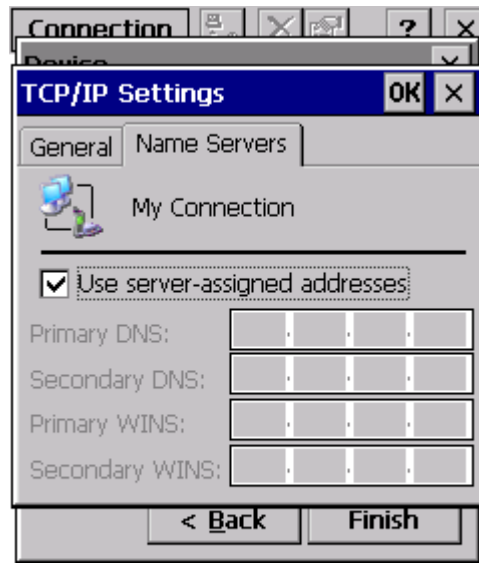
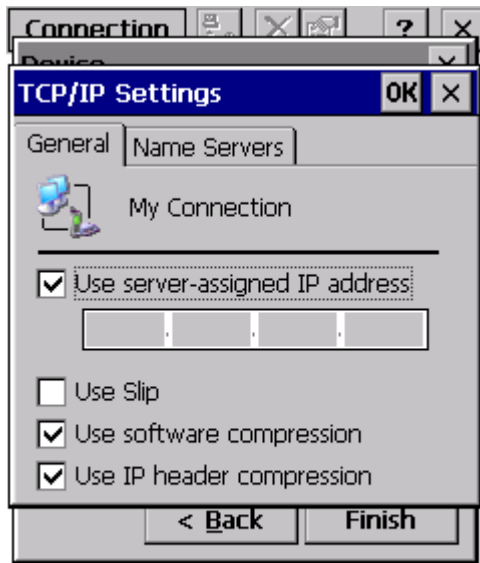
ICON	ITEM & FUNCTION
Network and Dial-up Connections	<ul style="list-style-type: none"> <li>● <b>“Connection” Tab :</b></li> </ul>
	<ul style="list-style-type: none"> <li>✓ To create a <b>“Dial-up Connection”</b>:               <ul style="list-style-type: none"> <li>➤ Double-tap the <b>“Make New connection”</b>.</li> <li>➤ In the <b>“Make New Connection”</b> dialog box, enter a name for the connection.</li> <li>➤ Select <b>“Dial-Up Connection”</b>.</li> <li>➤ Select the <b>“Next”</b> button.</li> <li>➤ Select the modem you want use.</li> <li>➤ Select <b>“Configure”</b></li> <li>➤ Under <b>“Connection Reference”</b>, use the default settings provided. If you can’t connect using these settings, see your ISP or network administrator for specific information. If you want to always enter a phone number before connecting, Select <b>“Manual Dial”</b>. Select <b>“OK”</b>.</li> <li>➤ Select <b>“TCP/IP Settings”</b>. In the <b>“General”</b> tab, ensure <b>“Use Server-assigned IP address”</b> is selected. In the <b>“Name Servers”</b> tab, ensure <b>“Use Server-assigned addresses”</b> is selected, and select <b>“OK”</b>. If you are unable to connect with these default settings, see your ISP or network administrator for specific TCP/IP information.</li> <li>➤ Select the <b>“Next”</b> button and type the telephone number.</li> <li>➤ Select the <b>“Finish”</b> button.</li> </ul> <p>The connection you just created appears as an icon in the <b>“Network and Dial-up Connections”</b> folder.</p> </li> <li>✓ Set up a <b>point-to-Point Protocol(PPP)</b> account with an ISP and obtain the following information:               <ul style="list-style-type: none"> <li>➤ Access telephone number</li> <li>➤ User name</li> <li>➤ Password</li> </ul> </li> </ul>

**Table 3-15(A) Network and Dial-up Connections**

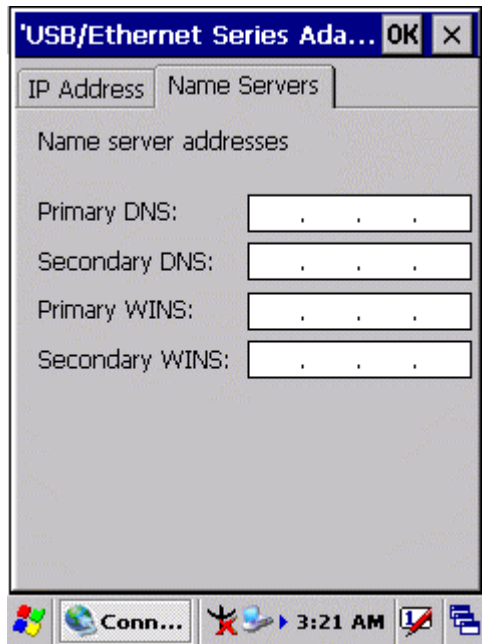
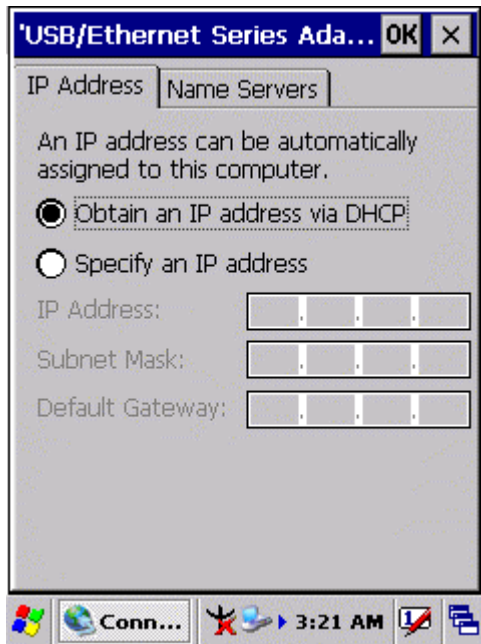
ICON	ITEM & FUNCTION
Network and Dial-up Connections	<p>Once you have established an account, create a new connection on your device. When creating this connection, you should be able to use all of the default TCP/IP settings provided in the Make New Connection Wizard. If you can't connect using the default settings, contact your ISP or access your ISP's Web site for specific TCP/IP information as well as primary and secondary DNS address.</p> <ul style="list-style-type: none"> <li>✓ <b>Modify connection setting</b> <ul style="list-style-type: none"> <li>➤ Select <b>Start &gt; Settings &gt; Network and Dialup Connections</b></li> <li>➤ Select the icon for connection settings you want to modify.</li> <li>➤ Select <b>File &gt; Properties</b>, or double- tap the appropriate icon.</li> <li>➤ Select desired options. There may be additional settings that depend on the connection. To modify, select the icon and select the icon and select <b>Advanced Settings...</b> from the menu.</li> </ul> </li> </ul>







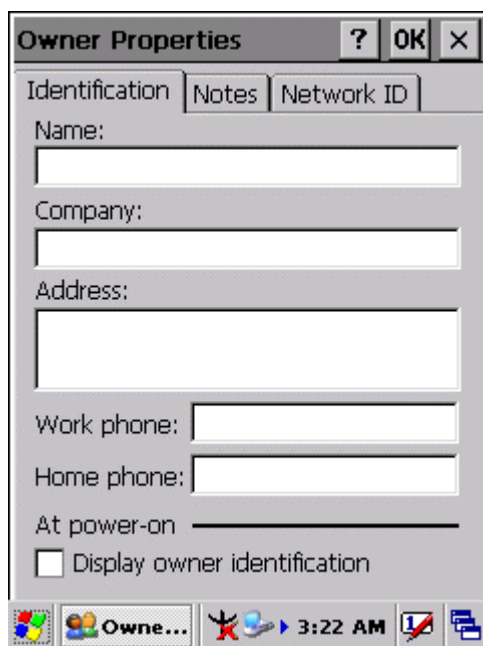




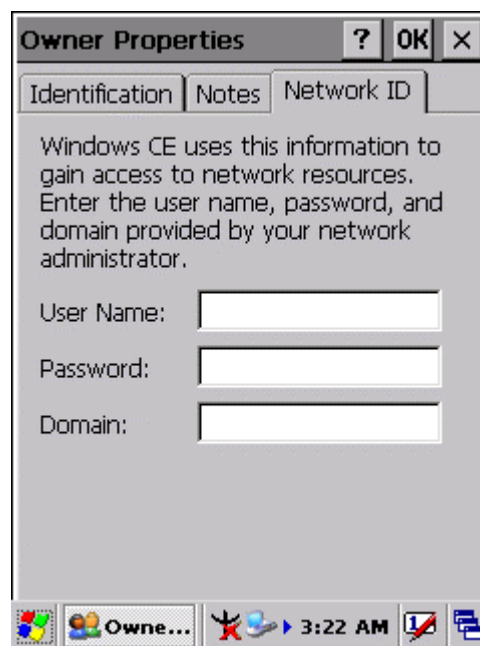
### 3.2.17 Owner

**Table 3-16** Owner

ICON	ITEM & FUNCTION
Owner	<ul style="list-style-type: none"> <li>• <b>“Identification” Tab : (Figure 3-15-1)</b></li> </ul>
	<ul style="list-style-type: none"> <li>✓ Fill in or edit the data as desired.</li> </ul>
	<ul style="list-style-type: none"> <li>✓ To have this information displayed when you start your device, select <b>“Display Owner Identification”</b> at Power On.</li> </ul>
	<ul style="list-style-type: none"> <li>✓ To set up identification for remote networks, see Setting up identification for remote networks.</li> </ul>
	<ul style="list-style-type: none"> <li>• <b>“Network ID” Tab: (Figure 3-15-2)</b></li> </ul>
	<ul style="list-style-type: none"> <li>✓ Enter the user name, password, and domain name you use to log on to remote network.</li> </ul>



**Figure 3-15-1**

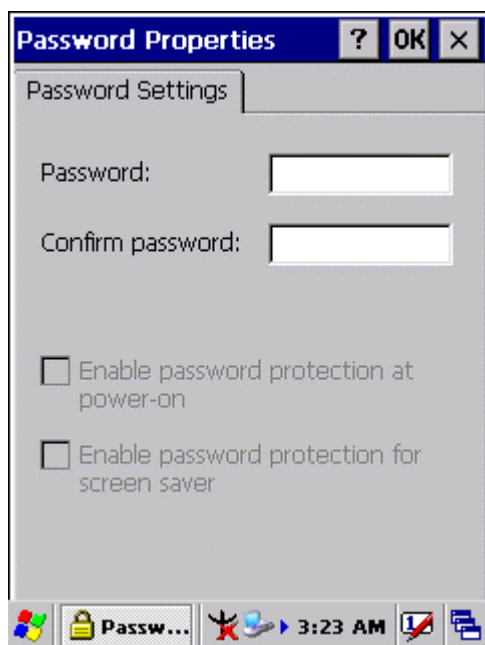


**Figure 3-15-2**

### 3.2.18 Password

**Table 3-17 Password**

ICON	ITEM & FUNCTION
Password	<ul style="list-style-type: none"><li>● <b>“Password Setting” Tab : (Figure 3-16)</b></li><li>✓ Enter the password</li><li>✓ In the <b>“Confirm password”</b> box, enter the password again.</li><li>✓ To require the password on startup, select <b>“Enable password protection at power- on”</b>. and/or select <b>“Enable password protection for screen saver”</b></li><li>✓ To exit the <b>Password</b> control panel, press <b>“OK”</b> from the control bar, or press the <b>&lt;Enter&gt;</b> key on the keypad.</li></ul>

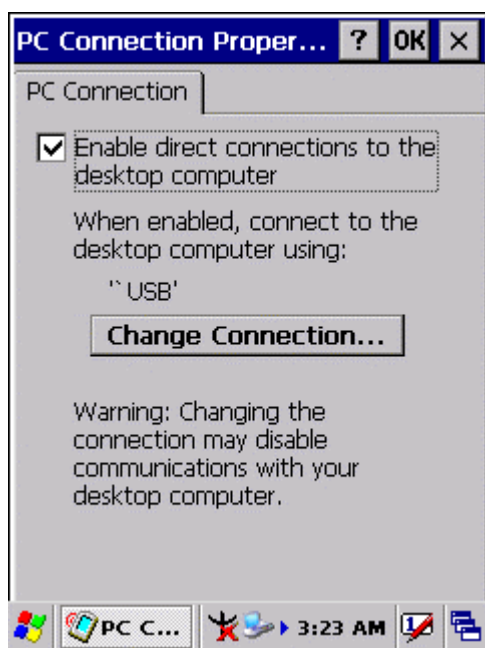


**Figure 3-16**

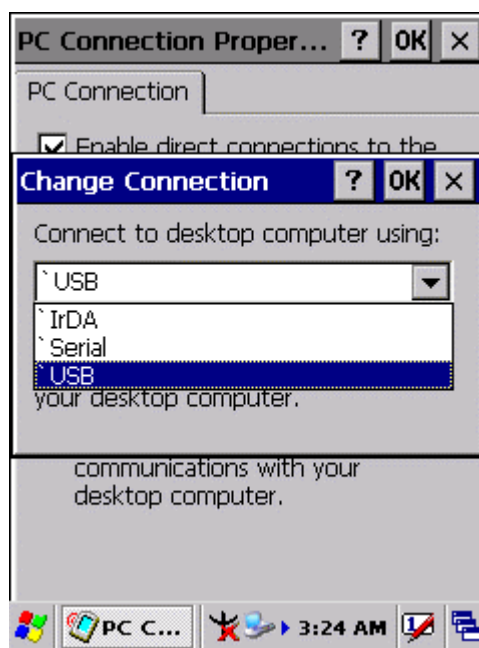
### 3.2.19 PC Connection

**Table 3-18 PC Connection**

ICON	ITEM & FUNCTION
PC Connection	<ul style="list-style-type: none"> <li>• <b>“PC Connection” Tab : (Figure 3-17-1)</b></li> <li>✓ Select the first checkbox to enable direct connections to the desktop computer. <b>(Figure 3-17-1)</b></li> <li>✓ Tap the <b>“Change Connection...”</b> button to modify the connection method from <b>USB, IrDA, or Serial. (Figure 3-17-2)</b></li> <li>✓ To exit the <b>“Change Connection”</b> dialog, press <b>“OK”</b> from the control bar, or press the <b>&lt;Enter&gt;</b> key on the keypad.</li> <li>✓ To exit the <b>“PC Connection”</b> properties control panel, press <b>“OK”</b> from the control bar, or press the <b>&lt;Enter&gt;</b> key on the keypad.</li> </ul>



**Figure 3-17-1**

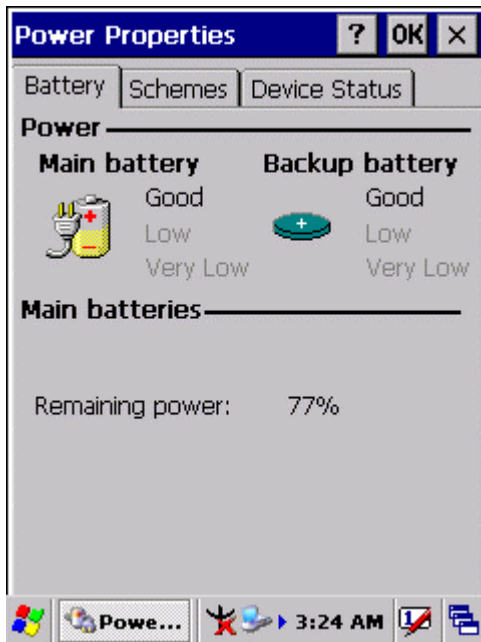


**Figure 3-17-2**

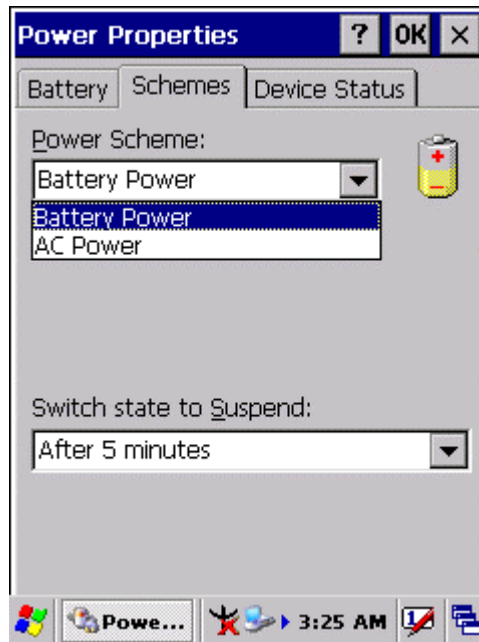
### 3.2.20 Power

**Table 3-19 Power**

ICON	ITEM & FUNCTION
Power	<ul style="list-style-type: none"> <li>● <b>“Battery” Tab : (Figure 3-18-1)</b></li> </ul>
	<ul style="list-style-type: none"> <li>✓ Provide change level indicators for <b>Main battery</b> and <b>Backup battery</b>.</li> <li>✓ To exit Battery control panel, press <b>“OK”</b> from the command bar, or press <b>&lt;Enter&gt;</b> key on keypad.</li> </ul>
	<ul style="list-style-type: none"> <li>● <b>“ Schemes” Tab: (Figure 3-18-2)</b></li> </ul>
	<ul style="list-style-type: none"> <li>✓ The <b>Scheme</b> Tab allows you to determine the time to switch state to Suspend mode when using either <b>Battery Power</b> or <b>AC Power</b>.</li> <li>✓ Select <b>Battery Power</b> or <b>AC Power</b> as the power scheme from the pull-down list.( <b>Figure 3-18-2</b>)</li> <li>✓ Select the time to suspend mode from the pull-down list. (<b>Figure 3-18-3</b>)</li> </ul>
	<ul style="list-style-type: none"> <li>● <b>“Device Status” Tab: ( Figure 3-18-4)</b></li> </ul> <p>Provide power level of device – The power level ranges from <b>“ High(D0)”</b> which means the device is at the highest power level to <b>“Off(D4)”</b> which means the device is at the lowest power level.</p>



**Figure 3-18-1**



**Figure 3-18-2**

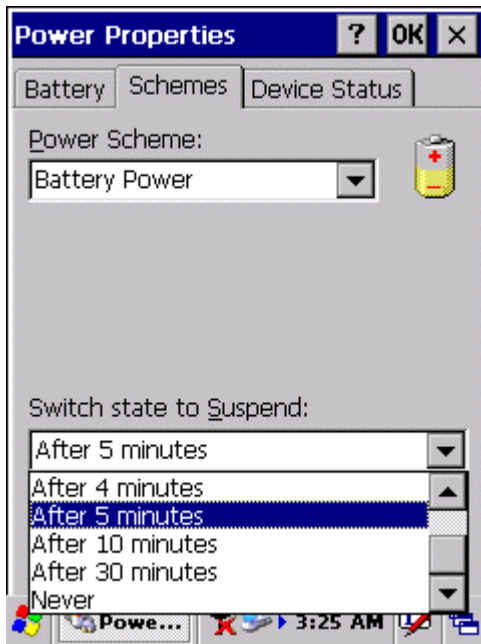


Figure 3-18-3

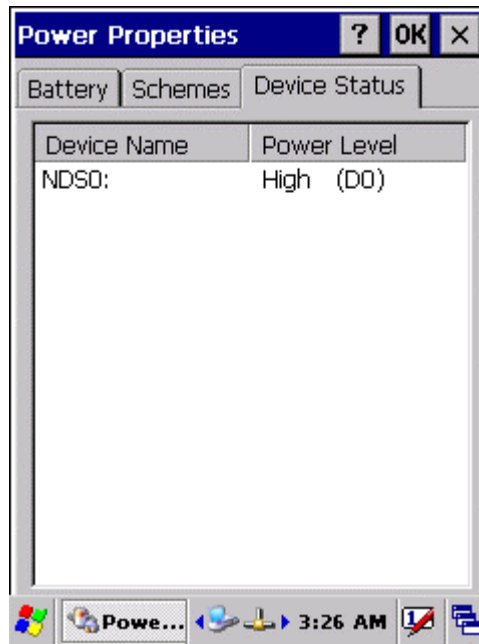


Figure 3-18-4

### 3.2.21 Regional Settings

Table 3-20 Regional Settings

ICON	ITEM & FUNCTION
Regional Settings	<ul style="list-style-type: none"> <li>• <b>“Region” Tab : (Figure 3-19-1)</b></li> <li>✓ Select the desired location/language.</li> <li>✓ Review the <b>Appearance samples</b> in the bottom half of the screen.</li> <li>✓ Select the Tab at the top for any settings you wish to change, Options to modify include <b>Number, Currency, Time, and Date.</b> ( <b>Figure 3-19-3 ~ Figure 3-19-9</b>)</li> </ul>

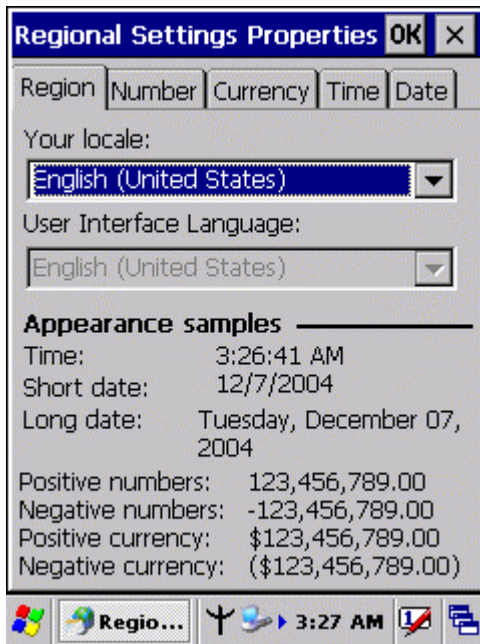


Figure 3-19-1

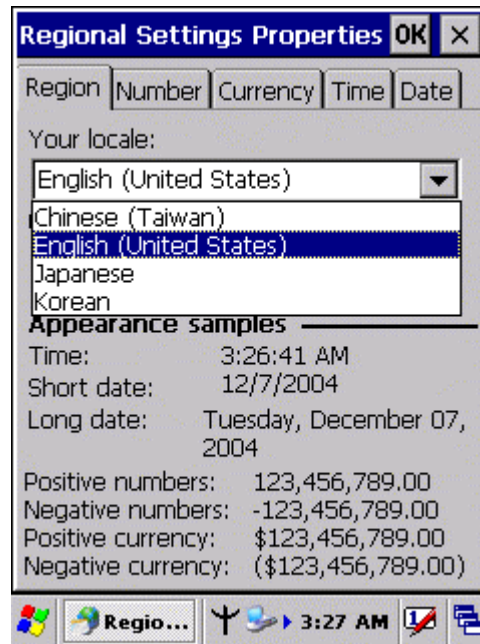


Figure 3-19-2

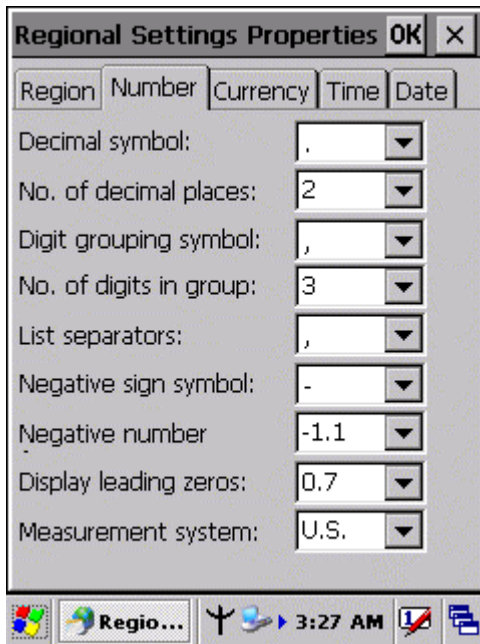


Figure 3-19-3

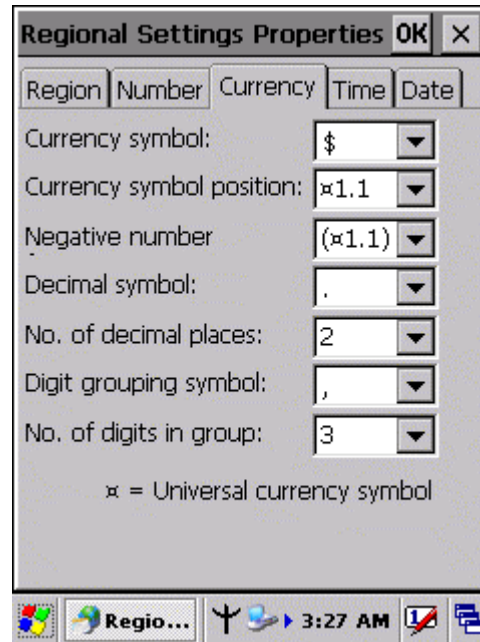


Figure 3-19-4

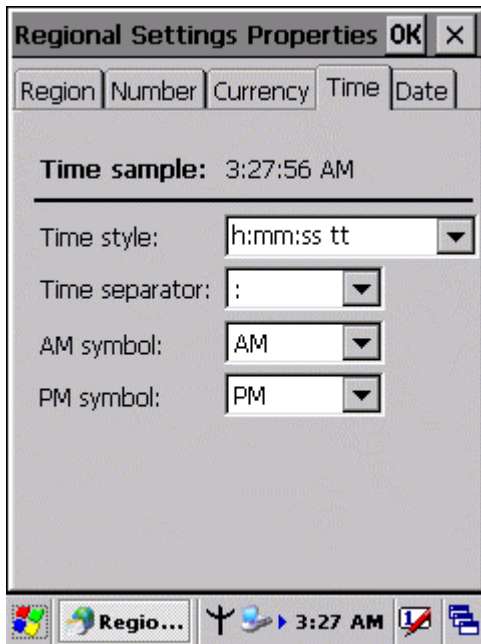


Figure 3-19-5

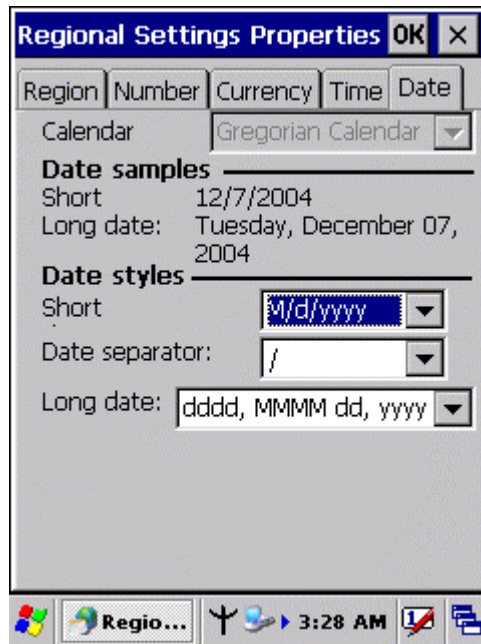


Figure 3-19-6

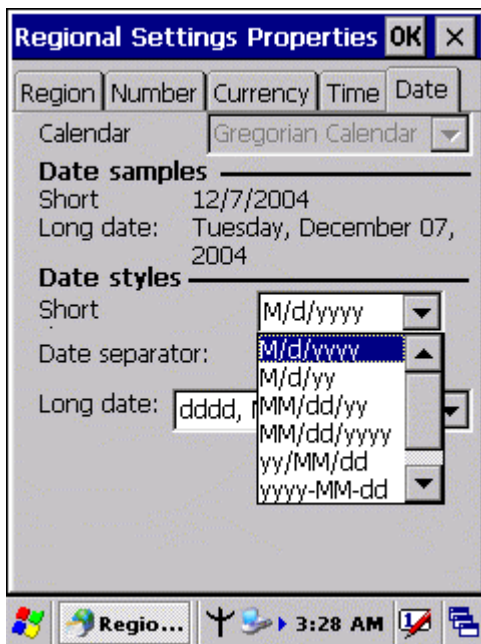


Figure 3-19-7

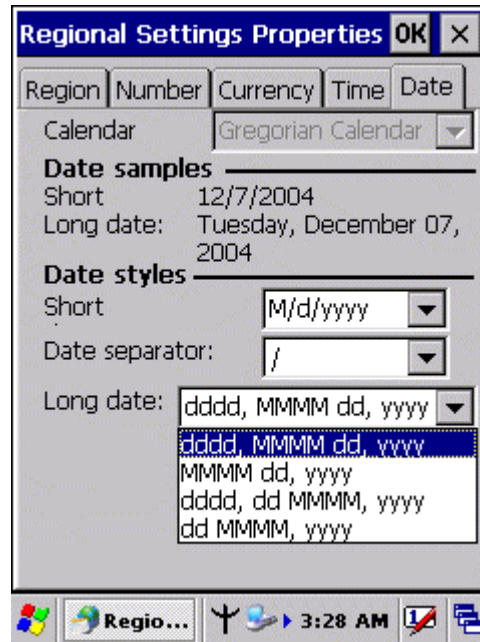


Figure 3-19-8



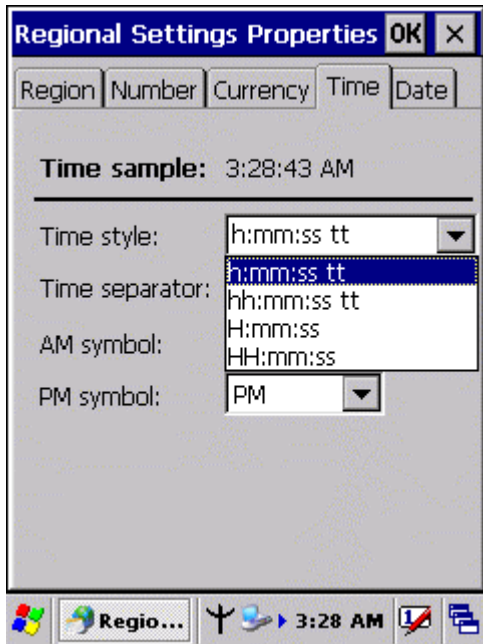


Figure 3-19-9


### 3.2.22 Remove Programs

Table 3-21 Remove Programs


ICON	ITEM & FUNCTION
Remove Programs	<ul style="list-style-type: none"> <li>• <b>“Remove Programs” Tab :</b></li> <li>✓ Only user installed programs can be removed.</li> <li>➤ Select the program you wish to remove from the list and press <b>“remove”</b> button.</li> </ul>

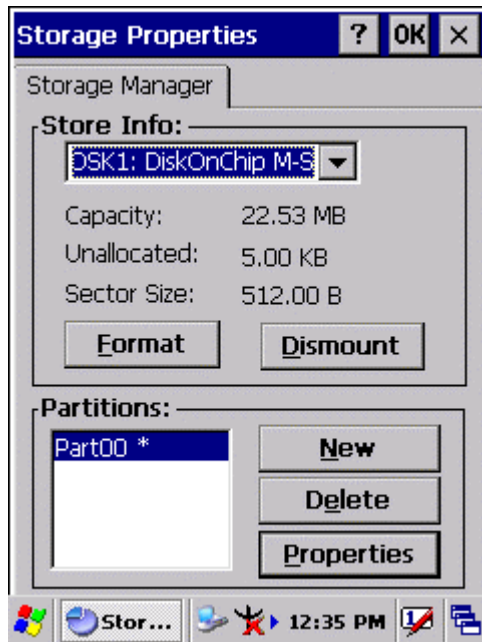
### 3.2.23 Storage Manager

Table 3-22 Storage Manager(A)

ICON	ITEM & FUNCTION
 Storage manager	<ul style="list-style-type: none"> <li>• <b>“Storage Manager” Tab : (Figure 3-20)</b></li> <li>✓ To change Storage properties control panel default settings: Insert. Compact Flash(CF) or Secure digital (SD) storage card into the unit.</li> <li>➤ Select <b>Start &gt; Settings &gt; Control Panel &gt; Storage Properties</b></li> </ul>

**Table 3-22 Storage Manager(B)**

ICON	ITEM & FUNCTION
 <p>Storage manager</p>	<ul style="list-style-type: none"> <li>• <b>“Storage Manager” Tab : (Figure 3-20)</b></li> <li>➤ From the <b>“Storage Info”</b> pull-down list, select the desired storage device.</li> <li>➤ You can also <b>format, dismount</b>, and create partitions on storage devices using this control panel.</li> <li>➤ To save and exit the <b>Storage Properties</b> control panel, press <b>“OK”</b> from the control bar, or press the <b>&lt;Enter&gt;</b> key on the keypad.</li> </ul> <p><b>Caution:</b> Dismounting or formatting the DiskOnChip will erase all files and program stored in Flash Memory</p>

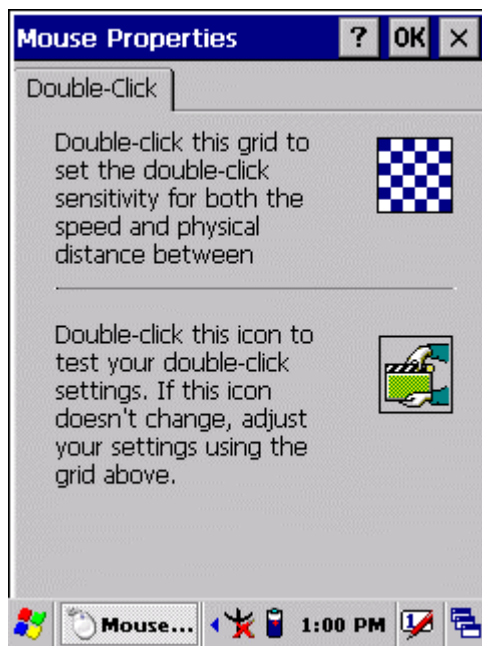


**Figure 3-20**

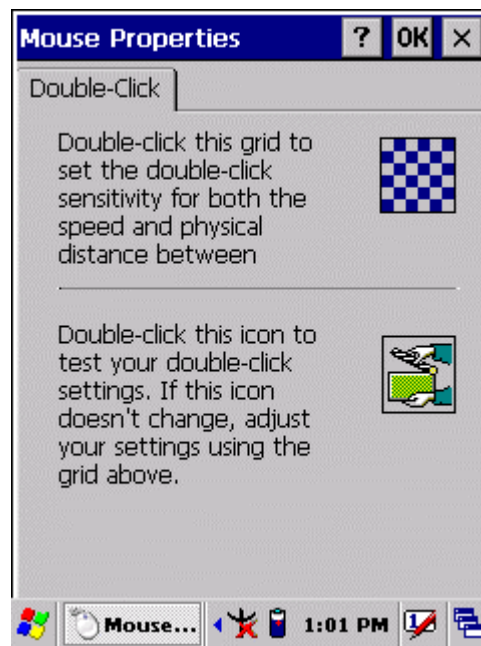
### 3.2.24 Stylus

**Table 3-23 Stylus(A)**

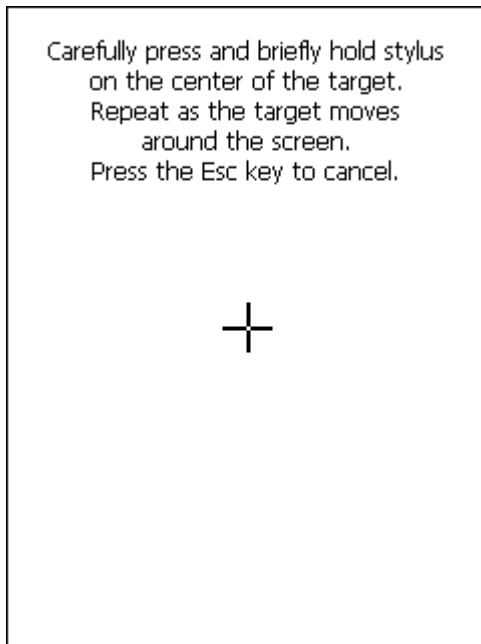
ICON	ITEM & FUNCTION
Stylus	<ul style="list-style-type: none"> <li>● <b>“Double-Tap” Tab : (Figure 3-21-1,Figure 3-21-2)</b></li> <li>✓ Double-tap the checkerboard grip at a comfortable speed.</li> <li>✓ Double-tap clapboard to test your settings</li> <li>✓ The function is OK if the figures are changed from Figure 3-21-1 to Figure 3-21-2.</li> <li>✓ To tap <b>“OK”</b> to exit the Stylus Properties.</li> </ul>
	<ul style="list-style-type: none"> <li>● <b>“Calibration”:</b> (Figure 3-21-3)</li> <li>✓ In the Welcome Wizard, you tapped a target with the stylus to set the amount of pressure needed for the screen to respond to your stylus taps.</li> <li>✓ Please also see 2.4.3: Calibration of the touch Screen</li> </ul>



**Figure 3-21-1**



**Figure 3-21-2**



**Figure 3-21-3**

### 3.2.25 System

**Table 3-24 System(A)**

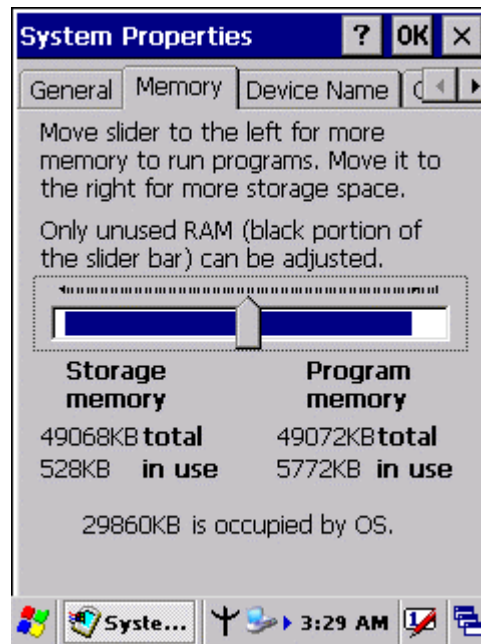
ICON	ITEM & FUNCTION
System	<ul style="list-style-type: none"> <li>● <b>“General” Tab : (Figure 3-22-1)</b></li> </ul>
	<ul style="list-style-type: none"> <li>✓ To show:               <ul style="list-style-type: none"> <li>➤ Firmware information</li> <li>➤ Information about Processor type, Memory size, Expansion card</li> </ul> </li> </ul>
	<ul style="list-style-type: none"> <li>● <b>“Memory” : (Figure 3-22-2)</b></li> </ul>
	<ul style="list-style-type: none"> <li>✓ Move the slider to adjust memory allocation. Default storage memory is normally is normally set to about 8MB with the reminder assigned to Program memory.</li> <li>✓ Press the <b>“OK”</b> key on the Keypad.</li> </ul> <p><b>Note: the difference is occupied by OS between the RAM size in Information properties and total memory size of storage memory and program memory</b></p>

**Table 3-24 System(B)**

ICON	ITEM & FUNCTION
System	<ul style="list-style-type: none"> <li>• <b>“Device Name” Tab : (Figure 3-22-3)</b></li> </ul>
	<ul style="list-style-type: none"> <li>✓ Your device uses this information to identify itself to other computers.</li> </ul>
	<ul style="list-style-type: none"> <li>✓ The input panel will open to facilitate data entry.</li> </ul>
	<ul style="list-style-type: none"> <li>✓ To close the <b>Device Name</b>, press the <b>“OK”</b> button, or press the <b>&lt;Enter&gt;</b> key on keypad.</li> </ul>
	<ul style="list-style-type: none"> <li>• <b>“Copyrights” Tab: (Figure3-22-4)</b></li> </ul>
	<ul style="list-style-type: none"> <li>✓ Refer to this tab for specific copyright data. As a user, you are responsible to read this statement.</li> </ul>



**Figure 3-22-1**



**Figure 3-22-2**



Figure 3-22-3

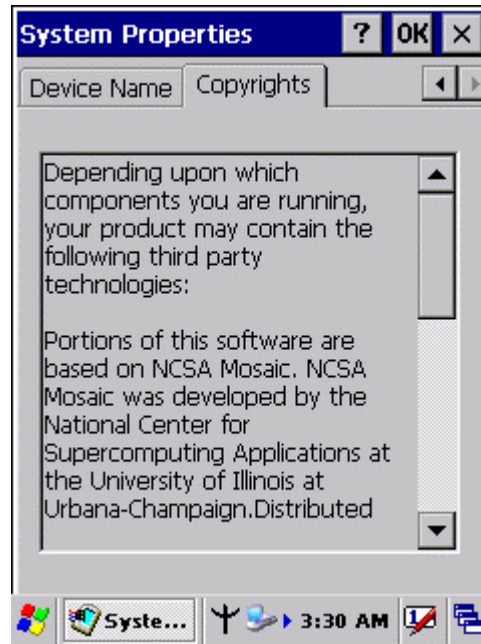


Figure 3-22-4

### 3.2.26 Volume & Sounds Properties

Table 3-25 Volume & Sound

ICON	ITEM & FUNCTION
Volume & Sound	<ul style="list-style-type: none"> <li>● <b>“Volume” Tab : (Figure 3-23-1)</b></li> </ul>
	<ul style="list-style-type: none"> <li>✓ The factory default for Volume is the forth level. You can adjust the volume to your environment and comfort.               <ul style="list-style-type: none"> <li>➤ Set the volume by adjusting the slider from <b>Soft</b> to <b>Loud</b>, or press <b>Right</b> or <b>Left</b> edge of <b>Navigation</b> keys</li> </ul> </li> </ul>
	<ul style="list-style-type: none"> <li>● <b>“Sounds ” Tab: (Figure3-23-2)</b></li> </ul>
	<ul style="list-style-type: none"> <li>✓ Enable the desired sounds for key clicks, screen taps, notifications, and applications.</li> </ul>

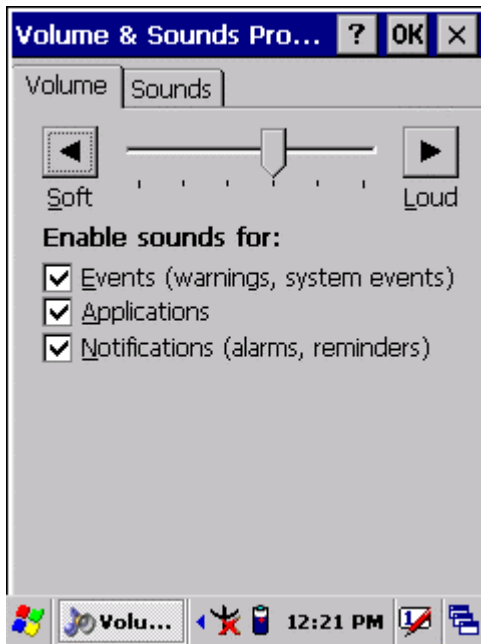


Figure 3-23-1

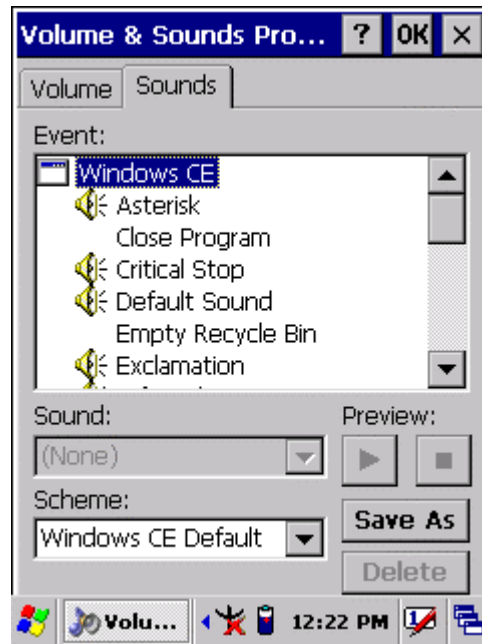


Figure 3-22-2

### 3.3 Taskbar and Start Menu

Table 3-26 Taskbar and Start menu

ICON	ITEM & FUNCTION
Taskbar and Start Menu	<ul style="list-style-type: none"> <li>● <b>“General” Tab :</b></li> </ul>
	<ul style="list-style-type: none"> <li>✓ In this tab, You can change the position of the Taskbar and Start menu               <ul style="list-style-type: none"> <li>➢ Is <b>always on top</b> or not</li> <li>➢ <b>Auto hide</b> or not</li> <li>➢ <b>Show Clock</b> or not</li> </ul> </li> </ul>
	<ul style="list-style-type: none"> <li>● <b>“Advanced ” Tab:</b></li> </ul>
	<ul style="list-style-type: none"> <li>✓ Tap the <b>“Clear”</b> button to remove the contents of the Documents Menu.</li> <li>✓ Enable <b>“<input type="checkbox"/> Expand Control Panel”</b> to list all icons of Control Panel from top to bottom.</li> </ul>

# Chapter 4

## Communication

---

### 4.1 Installing & Setting Up Microsoft ActiveSync

#### 4.1.1 Installing Microsoft ActiveSync on the Host PC

Microsoft ActiveSync is a file transfer tool to synchronize the files on a PC with the files on your PDA.

To install Microsoft ActiveSync, complete the following steps on the PC:

1. Go to the Microsoft Windows CE.NET website and download the most current version of ActiveSync:

<http://www.microsoft.com/mobile/pockeypc/downloads/>.

2. Install the most version of Microsoft ActiveSync on the host PC.
3. Open ActiveSync.
4. Select **File > Communication Settings** from ActiveSync's menu bar.
5. Go to "Using ActiveSync" on page X.X to continue using ActiveSync.

#### 4.1.2 Connecting PDA to Host PC

1. You can use either the USB/Serial(RS232) port of Single Dock or a USB/Serial(RS232) cable to connect the PDA to the Host PC.
  - To use the dock, you must first insert the PDA into the slot, making sure that the unit is firmly seated the dock.
  - To use the cable, connect the USB/Serial cable to the PDA.
2. Connect the USB/Serial dock or cable to the Host PC's serial port or USB port.
3. Connect the dock or PDA to the power adapter and power source.

### 4.2 Using ActiveSync

Use ActiveSync to transfer and synchronize files between the PDA and the Host PC.

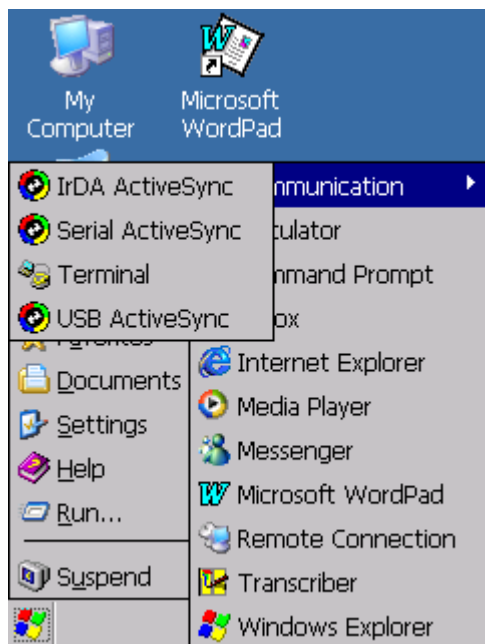
#### 4.2.1 Setting up a Partnership

During the Microsoft ActiveSync installation, you were prompted to create a



partnership with your mobile device. When you set up a partnership, you select synchronization and file conversation settings, which are contained in a file on your desktop computer. This file enables your desktop computer to recognize your device. Only devices that have a partnership with a desktop computer can synchronize information between the two computers.

For more information on partnerships, please refer to your Microsoft ActiveSync documentation or help file.



### Transferring Files:

To transfer files, complete the following steps on the host PC:

- ✓ Select **Start > Programs > Communication > (IrDA, Serial, or USB) ActiveSync**.
- ✓ Double-click on the selected **ActiveSync** icon
- ✓ After you have established a connection with PDA, tap the **“Explore”** button at the top of the **ActiveSync** window ( or select **Explore** from the File menu).
- ✓ Navigate to the target directory on your PDA and copy the desired file by using the **Copy/paste** method or dragging and dropping the desired file(s) into the folder.

### 4.2.2 ActiveSync File Synchronization

ActiveSync files synchronization requires an ActiveSync partnership between the PDA and the Host PC. Refer to “Setting up a Partnership”, above:

- ✓ Select the files in the synchronization configuration for the PDA partnership.
- ✓ Select **Tools > Options** from the ActiveSync command bar to configure the synchronization options.
- ✓ Place the file to be synchronized in the **Synchronization** folder created you’re **My Documents** directory. Defaults to the desktop. During the ActiveSync connection, all files in the **Synchronization** folder will be synchronized to the **\My Documents** directory on the PDA.

## **4.2 Networking**

Please see the **3.2.17 Owner, Table 3-16 Owner** on page 3-50 for **setting up the network ID**. And see the **2.5.6 Initiating a Network Connection** to setup the 802.11b Wireless LAN for RF connecting.