

NVX200

User manual



Help Center is available at <http://support.invoxia.com/>

Declaration of Conformity for the European Union

invoxia declares that the NVX200 product complies with the essential requirements and other relevant provisions of the European RED Directive 2014/53/EU on Radio and Telecommunication Terminal Equipment.

A copy of the EU Declaration of Conformity is available online at www.invoxia.com



U.S. Federal Communications Commission (FCC) Compliance Statement

The changes or modifications not expressly approved by the party responsible for compliance could void the user's authority to operate the equipment.

To comply with the FCC RF exposure compliance requirements, this device and its antenna must not be co-located or operating to conjunction with any other antenna or transmitter.

This device complies with part 15 of the FCC Rules. Operation is subject to the following two conditions: (1) This device may not cause harmful interference, and (2) this device must accept any interference received, including interferences that may cause undesired operation.

Note: This equipment has been tested and found to comply with the limits for a Class B digital device, pursuant to part 15 of the FCC Rules. These limits are designated to provide reasonable protection against harmful interferences in a residential installation. This equipment generates uses and can radiate radio frequency energy, and if not installed and used in accordance with the instructions, may cause harmful interference to radio communications. However, there is no guarantee that interference will not occur in a particular installation.

If this equipment does cause harmful interferences to radio or television reception, which can be determined by turning the equipment off and on, the user is encouraged to try to correct the interference by one or more of the following measures:

- Reorient or relocate the receiving antenna.
- Increase the separation between the equipment and receiver.
- Connect the equipment into an outlet on a circuit different from that to which the receiver is connected.
- Consult the dealer or an experienced radio/TV technician for help.

FCC ID: ZVS-DCK3

Environment



It must be disposed of through an appropriate collection and recycling structure.

Please contact your local electrical and electronic equipment waste management scheme.

Please respect your local municipal regulations and do not dispose of these products with unsorted household waste. The correct disposal of products at the end of their working life is good for the environment and your health.

Legal

invoxia[®], [™] Experience your phone, In Vivo Acoustic[®] and related trademarks, names and logos are the property of invoxia.

iPad, iPhone, iPod touch are trademarks of Apple Inc., registered in the U.S. and other countries.

Bluetooth is a trademark of Bluetooth SIG.

Android is a trademark of Google Inc.

Table of contents

1 Mount the dock adapter	6
2 Plug the NVX200 Cables	9
3 Pair your mobile with NVX200	9
4 Discover your NVX200 interface	10
5 Use your NVX200	11
6 Settings.....	12
7 Bluetooth.....	13
8 Warranty	14

Important information

Safety Guidelines

Required Power Supply

This phone is powered through a mains AC 100-240V supply.

Warning

- Do not open the base, handset or charge
- Please ensure that no liquid comes into contact with the product. Do not expose the device to excessive smoke, dust, mechanical vibration or shock.

- Place the unit near an accessible electrical outlet.
- Remove the handset from your ear when speaker mode is activated.
- Do not expose the device to excessive heat, e.g. to direct sunlight or near heating equipment.
- Do not use in areas where there are risks of explosion.

Operating and storage temperature

Use the device in a room where the temperature is always between 0 and 40°C (32 to 104°F).

Congratulations!

This manual will help you setup your NVX200 and learn how to use it.

To learn more about your product and its features, or in order to trouble shoot any issue you might have with it, please check our online help center that will provide to you complete and always up-to-date informations:

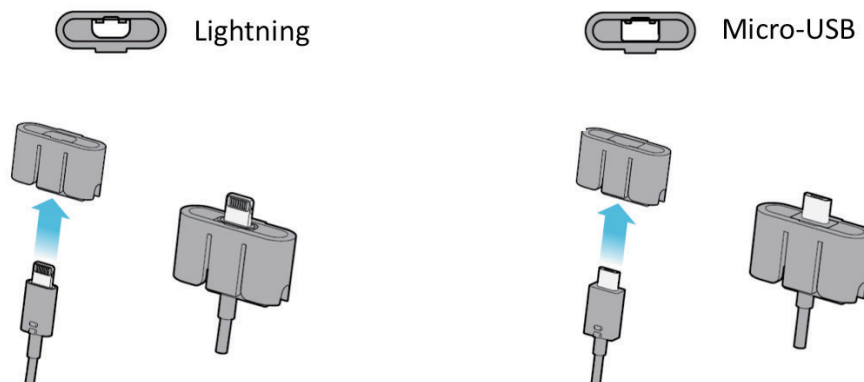
<http://support.invoxia.com/>

Please follow the steps below to get you going!

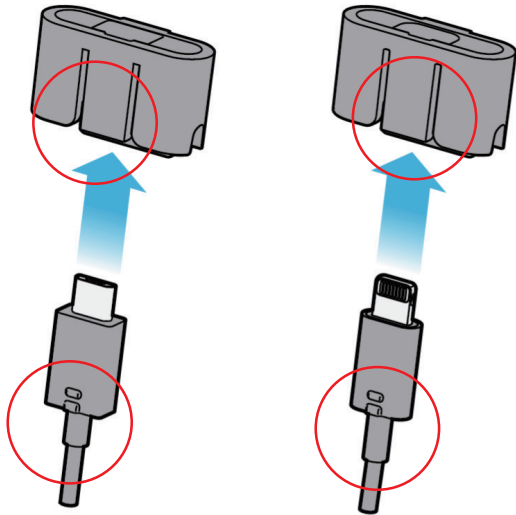
1 Mount the dock adapter

Please choose the right phone adaptor and cable for your mobile:

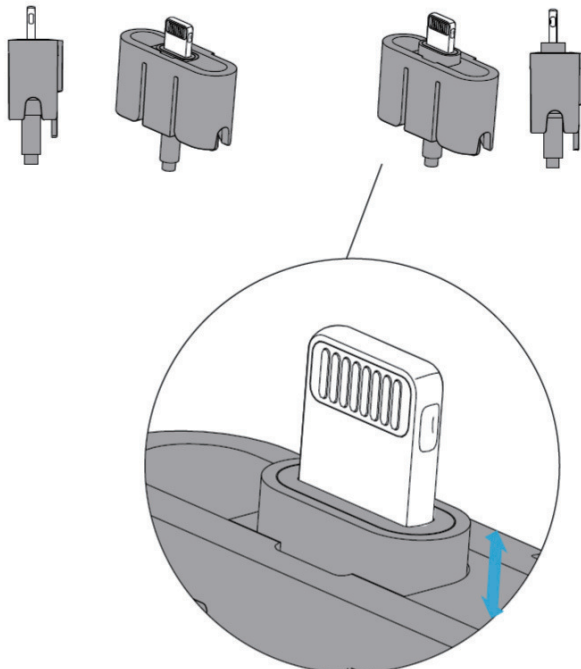
- If you own an iPhone 5 or newer, or an iPad 4 or newer, please use the Lightning adaptor.
- If you own any other device, accepting Micro-USB type cable, please use the Micro-USB adaptor.



Once you have the right adaptor and cable, please insert it the cable in the adaptor as showed below. Please note the two small bumps on the cable: they need to be mounted in the adaptor as showed below:

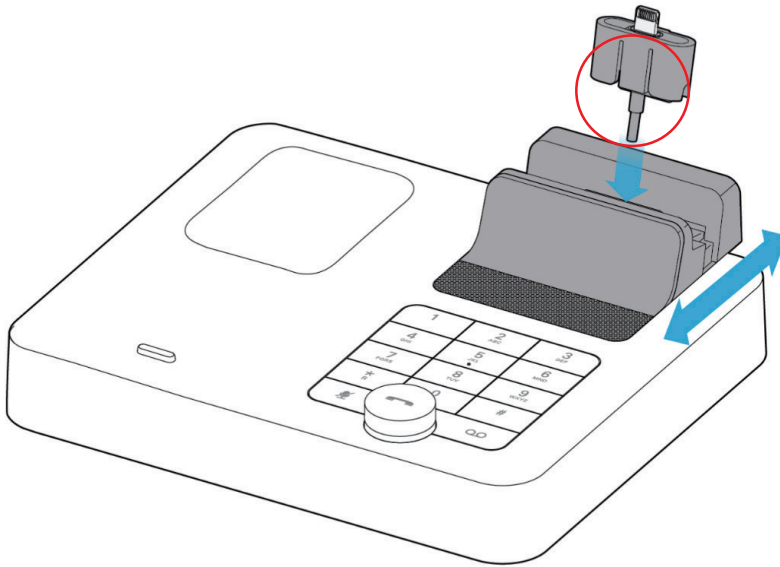


You can set up the cable height in two positions, depending on whether or not your smartphone is protected with a case. We recommend you to set the cable in its higher position if your smartphone is protected with a case.



Once the cable is set in the right position, please insert the whole adapter in your NVX200 as showed below:

- as the blue arrow shows, insert cable from top to bottom,
- the orientation of the adapter (see below) is very important.



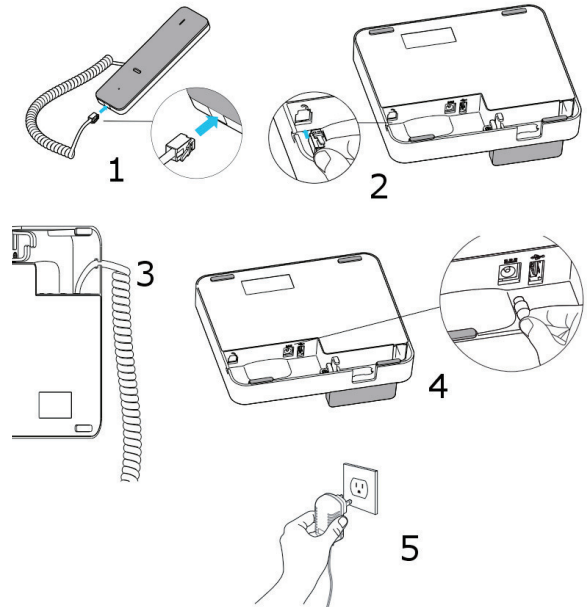
You can move slightly forward and backward the rear part of the dock, to adjust perfectly to the width of your mobile.

You can then plug the USB port of the cable to the USB port on the back of your NVX200.

2 Plug the NVX200 cables

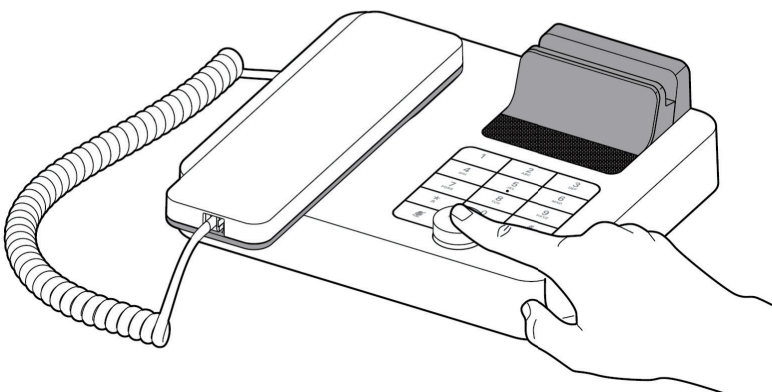
You now need to plug the NVX200 handset and NVX200 PSU

- Step 1:** Plug any end of the RJ11 cable into handset
- Step 2:** Plug the other end of the RJ11 cable into the NVX200
- Step 3:** Insert the RJ11 cable into the small aperture in the NVX200
- Step 4:** Plug the power cord in the NVX200
- Step 5:** After choosing the right electrical adaptor for your country between the one provided with your NVX 200, plug the power supply in a power outlet
- Step 6:** Your NVX 200 is starting. The screen turns on and displays “invoxia” with a loading bar, the button led turns blue



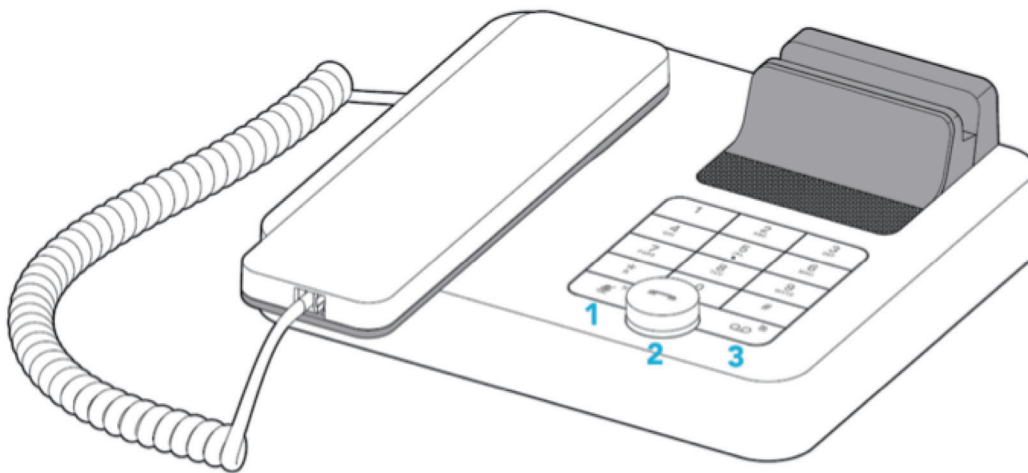
3 Pair your mobile with NVX200




With your new NVX200 turned on, press on the wheel until you hear a “bip”. Then stop pressing and you will hear “Pairing mode, waiting for connection”.



You now have a time window to connect your smartphone to the NVX200 . Go in your phone settings and choose your new NVX in the Bluetooth setting page.

4 Discover your NVX200 interface



- | | | |
|---|---|--|
| 1 |  | Mute / Back |
| 2 |  | Hands free on/off
Access to call lists & address book
Volume |
| 3 |  | Voice mails / Menu |

There are three main buttons you need to know about.

Button 1: back/mute

This button allows you to go back at any steps, mainly:

- to go backward in a menu
- to delete a digit when dialing

While in call, it allows to put the phone in mute

Button 2: the wheel

The wheel is the primary control of your phone. It allows you to do a number of things such as:

- turn on/off the loudspeaker during your calls
- get an incoming call (answers in loudspeaker mode)
- quick access to call lists: one click on the wheel and then turn it
- quick access to your address book: double click on the wheel and turn it
- set-up the volume of your device while on a call
- browse through the menus

Button 3: voice mail / menu

- Short press: calls your answering machine. You need to set up your answering machine phone number in the NVX200 settings in order to use this key.
- Long press: access the settings menu of your NVX200

5 Use your NVX200

All the usages below suppose that your mobile phone and NVX200 are Bluetooth paired and connected. For this you must have:

- paired at least once your mobile and the NVX200
- your Bluetooth mobile turned on
- your mobile in range of the NVX200

Answer an incoming call

When your mobile receives an incoming call, your NVX200 will ring and display the caller number or name (if the number is in your address book). To take the call you can then:

- hook-up the handset and use it for the call
- press the wheel to have the call in hands-free

Dial a number from your phone

To dial an outgoing call:

- dial the number on your NVX200 keyboard (if you need to correct one digit you can use the back key)
- grab the handset (handset call) or press the wheel (hands-free call)
- if you do nothing the call will start in hands-free automatically after a couple of seconds

Browse your call list

- make one click on the wheel to get in the call list
- rotate the wheel until you find your contact, or as a shortcut press the first letter of the name your looking for (one time '2' for A, two times '2' for B, three times '2' for C)
- grab the handset (handset call) or press the wheel (hands-free call)
- at any step you can get out of the call list by pressing the back key

Browse your contact list

- make a double click on the wheel to get in your contact list
- rotate the wheel until you find your contact, or as a shortcut press the first letter of the name your looking for (one time '2' for A, two times '2' for B, three times '2' for C)
- grab the handset (handset call) or press the wheel (hands-free call)
- at any step you can get out of the call list by pressing the back key

There are a number of settings of your NVX200 that you can access.

To go to the settings menu, you must make a long press on the menu key on the bottom right of the keyboard. You can then access the following settings. By browsing through the menus with the wheel key (turn it to browse, click to validate) , and the back key.

Audio settings

You can set-up the following parameters

- your ringtone among a choice of melodies
- the ring volume of your NVX200
- the handset volume (you can also set it up while in a handset call by turning the wheel)
- the speaker volume (you can also set it up while in a hands-free call by turning the wheel)
- the alerts volume
- the music volume when you use your NVX200 to listen to music from your mobile with Bluetooth
- hearing aide mode enablement/disablement

Phone settings

In this menu you can set-up the voice mail number of your operator (e.g 123 or 888 etc.). Once you have set-up a voice mail number in this menu, you will be able to call your mobile voice mail by pressing the voice mail / menu key.

Speed dial

You can set-up 10 speed dial keys on your NVX200 from 0 to 9

To use speed dial:

- press the back key
- then press 0 to 9 depending on the speed dial you want to call

To set-up the speed dials:

- you can go to the settings speed dial menu, and set up manually the name and number of each speed dial
- or from the contact list
 - select your contact
 - press the menu key
 - press 3
 - turn the wheel to select the speed dial you want to assign x0 from x9
 - click the wheel to assign it

Bluetooth 1st connection

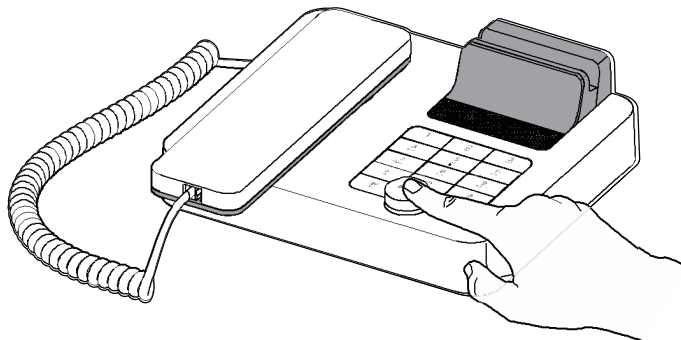
For iOS devices, make sure your Bluetooth is activated

- For iOS user only: dock or connect via USB your iPhone/iPod/iPad. The Bluetooth connection is then automatic!
- Or, for iOS and Android devices, long push the volume button until you hear a sound signal. A «Pairing mode: waiting for connection» message allows you to pair your NVX200 in your device Bluetooth menu. A final sound confirms the pairing.

Multiple connections: Pairing a new device / Reconnect a device

For iOS devices, make sure your Bluetooth is activated

- Long push the volume button until you hear a sound signal. A «Pairing mode: waiting for connection» message allows you to pair your NVX200 in your device Bluetooth menu. A final sound confirms the pairing.
- Connecting a previously paired device is easy from its Bluetooth menu. The last connected device is the controlling device.



Disconnect a paired device

- Long push the volume button until hearing a double-sound signal. The last connected device is then disconnected and auto-connection is stopped. A «Disconnecting» message and sound signal confirms the disconnection.
- In your invoxia app, go to Settings > Bluetooth, you can tap «Unpair». The Bluetooth icon disappears from your screen.

Unpair all the connected devices

- Long push the volume button until hearing a three-sound signal. A «Clearing all subscriptions» message confirms it.

⚠ Also forget the NVX200 from your device Bluetooth menu in order to complete future pairings.

This warranty relates to the telephone and not its accessories (power adapter, telephone cable).

Warranty Period

This telephone, when new, comes with a 12-month warranty. The Warranty Period starts on the date of purchase of the telephone.

The Warranty will be honored on presentation of the original bill or receipt, provided the date of purchase and the unit type are indicated.

Warranty Coverage

In the event of malfunction or defect during the Warranty Period, the authorized After Sales Team will unilaterally decide whether or not to proceed with the repair or replacement of the telephone in whole or in part.

Spare parts that may be used during repair may be parts which have been reworked. The original purchase date determines the start date of the Warranty Period. The Warranty Period is not extended if we repair or exchange the phone through our After Sales Team.

Exclusion

Damage or defects caused through misuse or mishandling of the phone and through the use of accessories other than those originally included with the telephone or not recommended in this User Guide are not covered by this Warranty.

The Warranty does not cover damage caused by external factors such as lightning, water or fire or any other damage caused during transportation.

No warranty can be claimed if the phone is repaired, altered or modified by the purchaser or any other repairer who is not officially approved and qualified.

Procedure

invoxia warrants that returns will be processed between 4 to 8 weeks. Be sure to return the full product in its original packaging and in perfect condition. Any returns not meeting these conditions will be refused.

All returns must be authorized in advance by invoxia, whose After Sales Team will issue you with a return reference. The return form must be printed out and attached to the returned product.

invoxia reserves the right to determine in good faith if all these conditions are met. Upon receipt of the returned product invoxia will send an e-mail to confirm its receipt.

Contact

To get support on your product, visit <http://support.invoxia.com> or send an email to support@invoxia.com