

A decorative horizontal band of overlapping, semi-transparent, colorful shapes in shades of purple, red, orange, yellow, green, and blue, resembling a stylized wave or sound wave.

invoxia

User guide
NVX320

Declaration of Conformity for the European Union

Invoxia declares that the NVX320 product complies with the essential requirements and other relevant provisions of the European RTTE Directive 1999/5/EC on Radio and Telecommunication Terminal Equipment.

You can read the Declaration of Conformity at the following address: www.invoxia.com/fr/support.



U.S. Federal Communications Commission (FCC) Compliance Statement

The changes or modifications not expressly approved by the party responsible for compliance could void the user's authority to operate the equipment.

To comply with the FCC RF exposure compliance requirements, this device and its antenna must not be co-located or operating in conjunction with any other antenna or transmitter.

This device complies with part 15 of the FCC Rules. Operation is subject to the following two conditions: (1) This device may not cause harmful interference, and (2) this device must accept any interference received, including interference that may cause undesired operation. Changes or modifications not expressly approved by the party responsible for compliance could void the user's authority to operate the equipment.

Note: This equipment has been tested and found to comply with the limits for a Class B digital device, pursuant to part 15 of the FCC Rules. These limits are designed to provide reasonable protection against harmful interference in a residential installation. This equipment generates, uses and can radiate radio frequency energy and, if not installed and used in accordance with the instructions, may cause harmful interference to radio communications. However, there is no guarantee that interference will not occur in a particular installation. If this equipment does cause harmful interference to radio or television reception, which can be determined by turning the equipment off and on, the user is encouraged to try to correct the interference by one or more of the following measures:

- Reorient or relocate the receiving antenna.
- Increase the separation between the equipment and receiver.
- Connect the equipment into an outlet on a circuit different from that to which the receiver is connected.
- Consult the dealer or an experienced radio/TV technician for help.

Environment



Your NVX320 dock has been designed and manufactured using quality materials and components which can be reused and recycled. The presence of the crossed-out wheeled bin symbol indicates that the product complies with EU Directive 2002/96/EC. It must be disposed of through an appropriate collection and recycling structure.

Please contact your local electrical and electronic equipment waste management scheme.

Please respect your local municipal regulations and do not dispose of these products with unsorted household waste.

The correct disposal of products at the end of their working life is good for the environment and your health.

Legal

invoxia®, NVX320®,™ Experience your phone, In Vivo Acoustic®, Smart holder® and related trademarks, names and logos are the property of invoxia.

iPad, iPhone, iPod touch are trademarks of Apple Inc., registered in the U.S. and other countries.

Skype, associated trade marks and logos and the «S» logo are trade marks of Skype Limited.

Samsung and Galaxy S are trademarks of Samsung Electronics Co., Ltd.

Android is a trademark of Google Inc.

Table of contents

• Important information	4
• Safety guidelines	4
1 Discover your NVX320	5
• Box content	5
• Your NVX320 base	5
2 Set-up	6
• Connect all your devices	7
• Downloading the invoxia application	7
4 Use	7
• Adjusting the volume	7
4 Technical Data	7
• Connectivity	7
• Technical Specifications	7
• Buttons	7
5 Warranty	8
• Warranty period	8
• Warranty coverage	8
• Exclusion	8
• Procedure	8
• Contact	8
• Invoxia	8

Important information

Safety Guidelines

Required Power Supply

This NVX320 base is powered through a mains AC 100-240V supply.

Warning

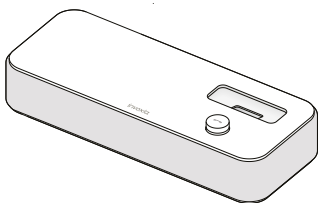
- Do not open the base or charger.
- Please ensure that no liquid comes into contact with the product. Do not expose the device to excessive smoke, dust, mechanical vibration or shock.
- Only use the cables, adapters and batteries supplied.
- Place the unit near an accessible electrical outlet.
- Do not expose the device to excessive heat, e.g. to direct sunlight or near heating equipment.
- Do not use in areas where there are risks of explosion.

Operating and storage temperature

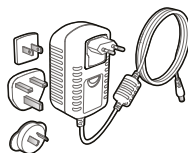
Use the device in a room where the temperature is always between 0 and 40°C (32 to 104°F).

1 Discover your NVX320

Box content

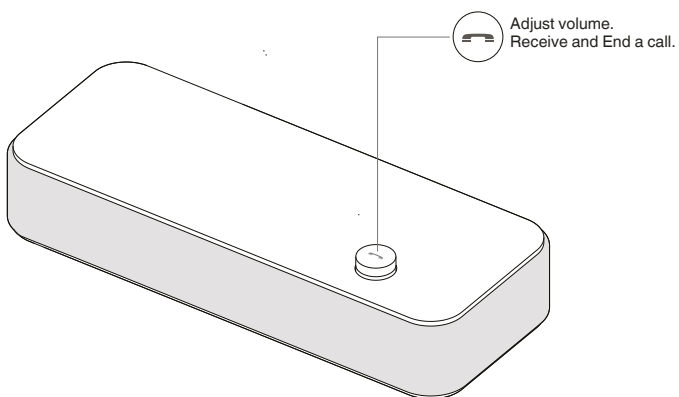


NVX320 base



AC adapter

Your NVX320



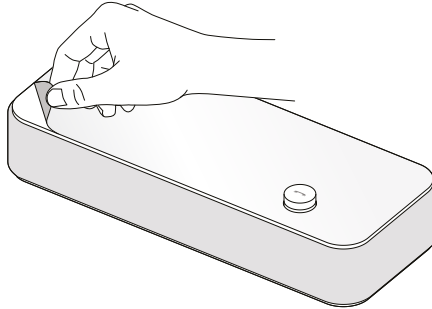
Designed and produced by invoxia, Paris

2 | Set up

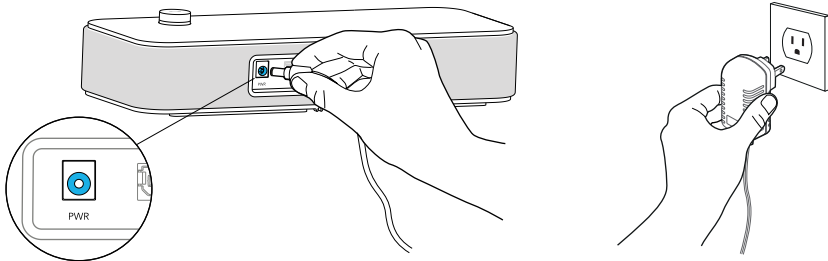
Place your phone near your mains supply socket.

Once installed, to benefit from the best sound quality avoid placing any obstacles (walls or cumbersome objects) within a range of 20cm.

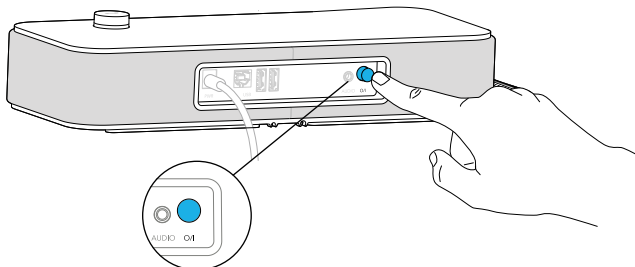
1. The NVX320 base is protected by a transparent film. Please remove it.



2. Plug the mains power adapter into the back of the base and into a wall mount socket.

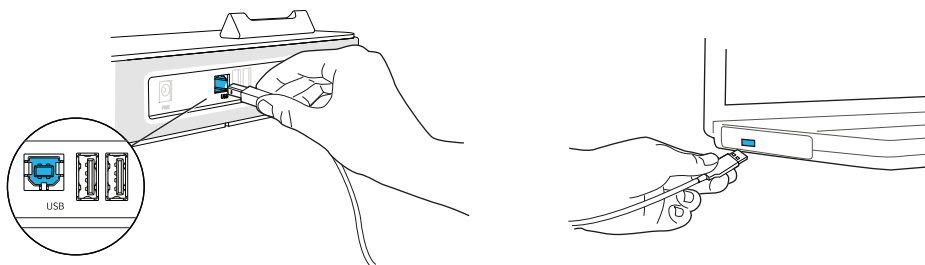


3. Press the On / Off button at the back of the base.



Connect all your devices

The 3.5 mm jack is an audio input for all your devices with an audio output. The USB slave and USB ports are to connect your computer and charge your smartphones and tablets (USB cables not included).



4 Use

You can benefit from your conferences and videoconferences sound on the NVX320 with a great acoustic sound quality.

Adjusting the volume

Turn the volume button to regulate the volume coming from the speakers.

5 Technical Data

Connectivity

- 1 USB slave port
- 2 USB port
- 1 jack 3.5 mm input

Technical Specifications

- Power supply: 100-240V / 12V 3A AC adapter
- Dimensions: 29x11,5x5,25cm
- Operating temperature: 0°C – 40°C
- Weight: 2,5 kg
- Humidity: 10% - 90%

Buttons

On/ Off button

 Volume / Answer button

6 Warranty

This warranty relates to the NVX320 dock and not its accessories (power adapter).

Warranty Period

This dock, when new, comes with a 12-month warranty. The Warranty Period starts on the date of purchase of the NVX320 dock.

The Warranty will be honored on presentation of the original bill or receipt, provided the date of purchase and the unit type are indicated.

Warranty Coverage

In the event of malfunction or defect during the Warranty Period, the authorized After Sales Team will unilaterally decide whether or not to proceed with the repair or replacement of the dock in whole or in part.

Spare parts that may be used during repair may be parts which have been reworked.

The original purchase date determines the start date of the Warranty Period. The Warranty Period is not extended if we repair or exchange the phone through our After Sales Team.

Exclusion

Damage or defects caused through misuse or mishandling of the dock and through the use of accessories other than those originally included with the dock or not recommended in this User Guide are not covered by this Warranty.

The warranty does not cover damage caused by external factors such as lightning, water or fire or any other damage caused during transportation.

No warranty can be claimed if the dock is repaired, altered or modified by the purchaser or any other repairer who is not officially approved and qualified.

Procedure

Invoxia warranties that returns will be processed between 4 to 8 weeks. Be sure to return the full product in its original packaging and in perfect condition. Any returns not meeting these conditions will be refused.

All returns must be authorized in advance by invoxia, whose After Sales Team will issue you with a return reference. The return form must be printed out and attached to the returned product.

Invoxia reserves the right to determine in good faith if all these conditions are met. Upon receipt of the returned product, invoxia will send an e-mail to confirm its receipt.

Contact

To contact the After Sales Team, please send an email to support@invoxia.com.

Invoxia

87, rue du Gouverneur Général Eboué
92130 Issy-les-Moulineaux
France

