

**linear
motion
systems**



Cinema Seat Mass Open/Close Wall Box Transmitter Product Specification



FCC Statement

This device complies with Part 15 of the FCC Rules. Operation is subject to the following two conditions:

- (1) This device may not cause harmful interference, and
- (2) This device must accept any interference received, including interference that may cause undesired operation.

Any changes or modifications not expressly approved by party responsible for compliance could void the user's authority to operate the equipment.

This equipment should be installed and operated with minimum distance 20cm between rotation & your body.

RSS-Gen & RSS-210 Statement:

"This device complies with Industry Canada licence-exempt RSS standard(s).

Operation is subject to the following two conditions: (1) this device may not cause interference, and (2) this device must accept any interference, including interference that may cause undesired operation of the device.

Le présent appareil est conforme aux CNR d'Industrie Canada applicables aux appareils radio exempts de licence. L'exploitation est autorisée aux deux conditions suivantes : (1) l'appareil ne doit pas produire de brouillage, et (2) l'utilisateur de l'appareil doit accepter tout brouillage radioélectrique subi, même si le brouillage est susceptible d'en compromettre le fonctionnement."

RSS-102 Statement:

"This equipment complies with Industry Canada radiation exposure limits set forth for an uncontrolled environment. "

"Cet équipement est conforme à l'exposition aux rayonnements Industry Canada limites établies pour un environnement non contrôlé. "

Description

This system is designed for cinema seats mass open and close. With one wall unit box could control up 100 sets seats open and close at one time.

Technical Parameter

Mass Open and Close Wall Box

Model: HC370 602087

Dimension:250x200x100mm

AC Input: 100~240VAC,50/60Hz,1.6A ~0.7A

Akku Pack

- Cell:18650x3
- Rated Capacity: 16.2Wh

Wireless Parameters

- RF Frequency: 2.4GHz
- Working mode: Broadcasting only
- Control Range: >50m in open space

Connection:

- Antenna Connector: SMA female
- US AC cable 1400mm (Optional)

Key selector switch

- 3 position with return in center and key

LED Indicator

- Green: Working
- Red: Pairing

Reset

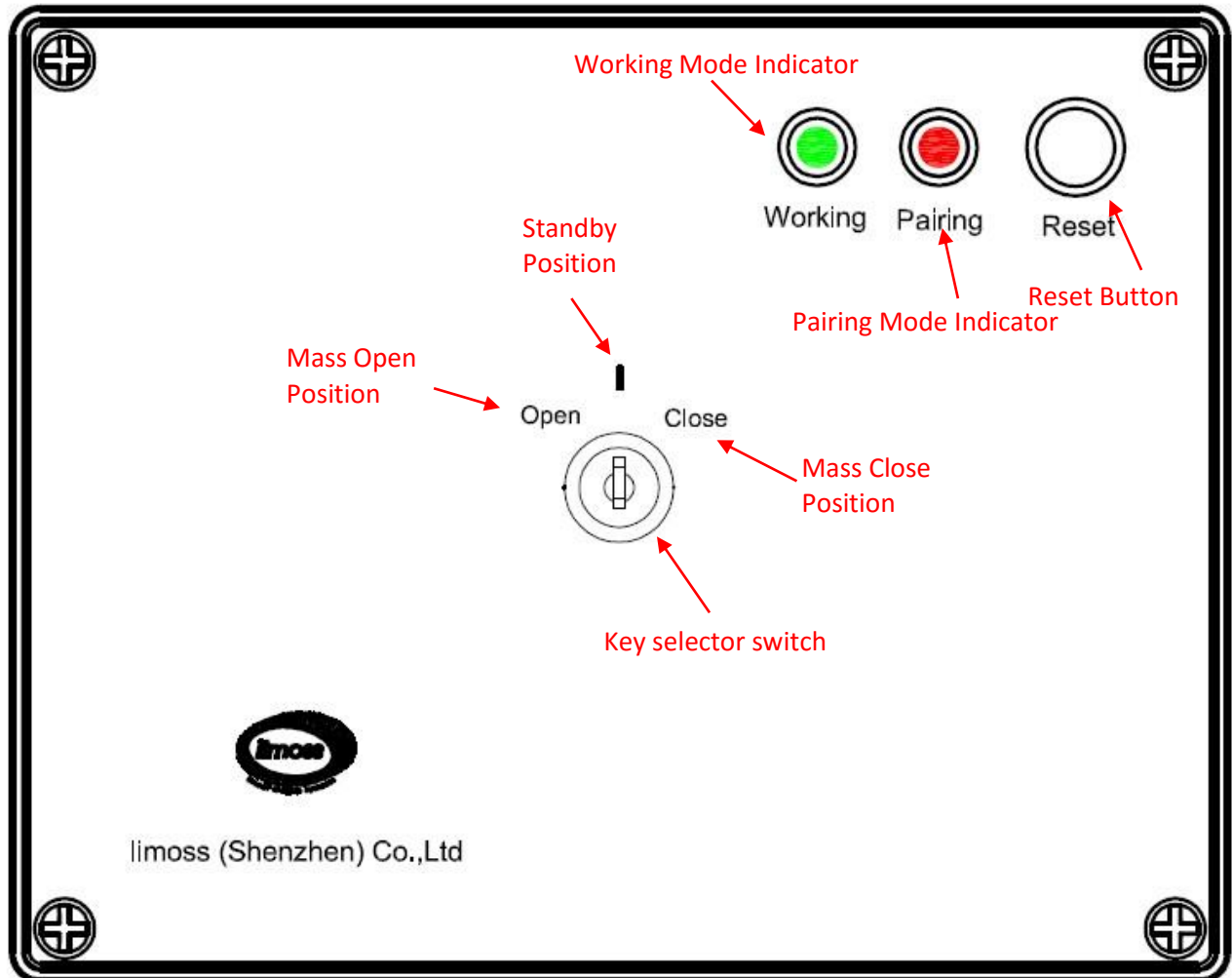
- Press the reset button to reset the transmitter if system halted.

Certification:

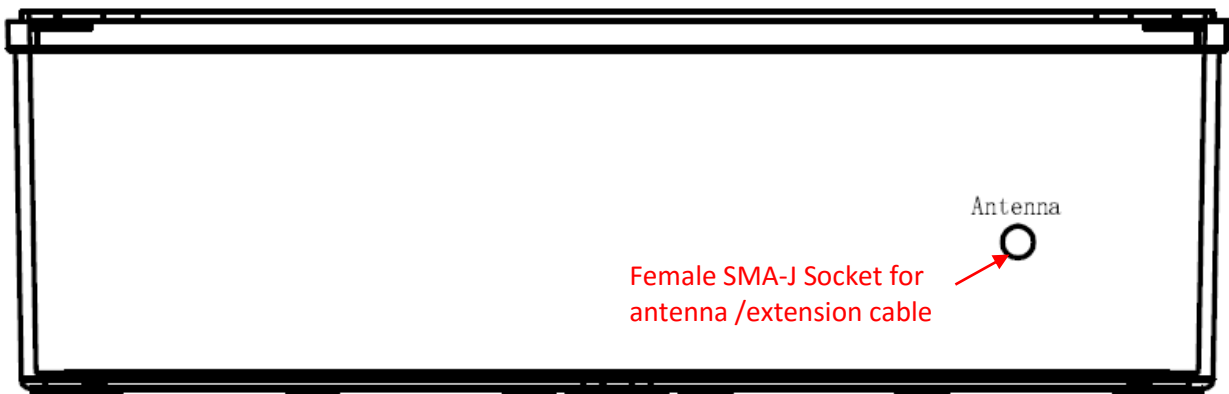
CE/FCC/cTUVs/

Description for system

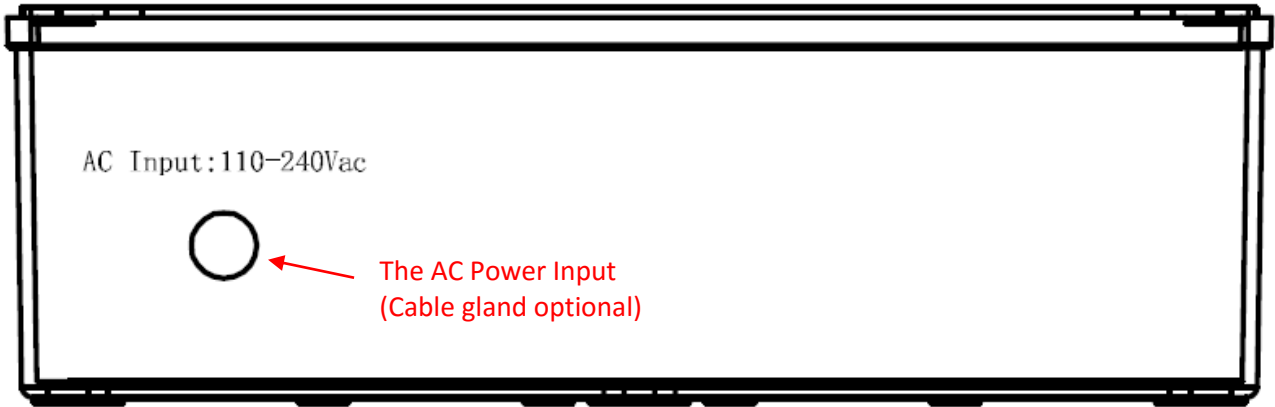
1. Front panel



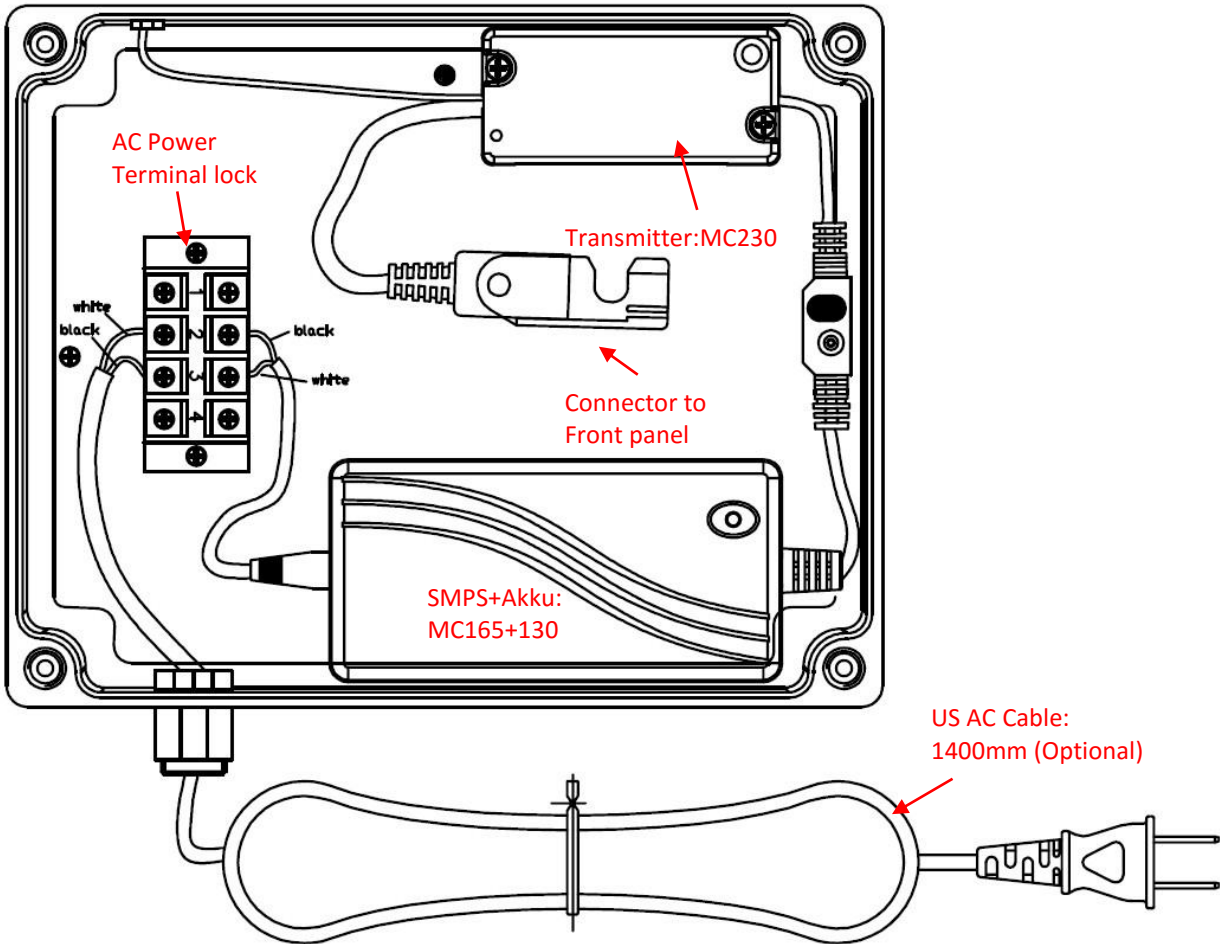
2. Top side: SMA Antenna Connector



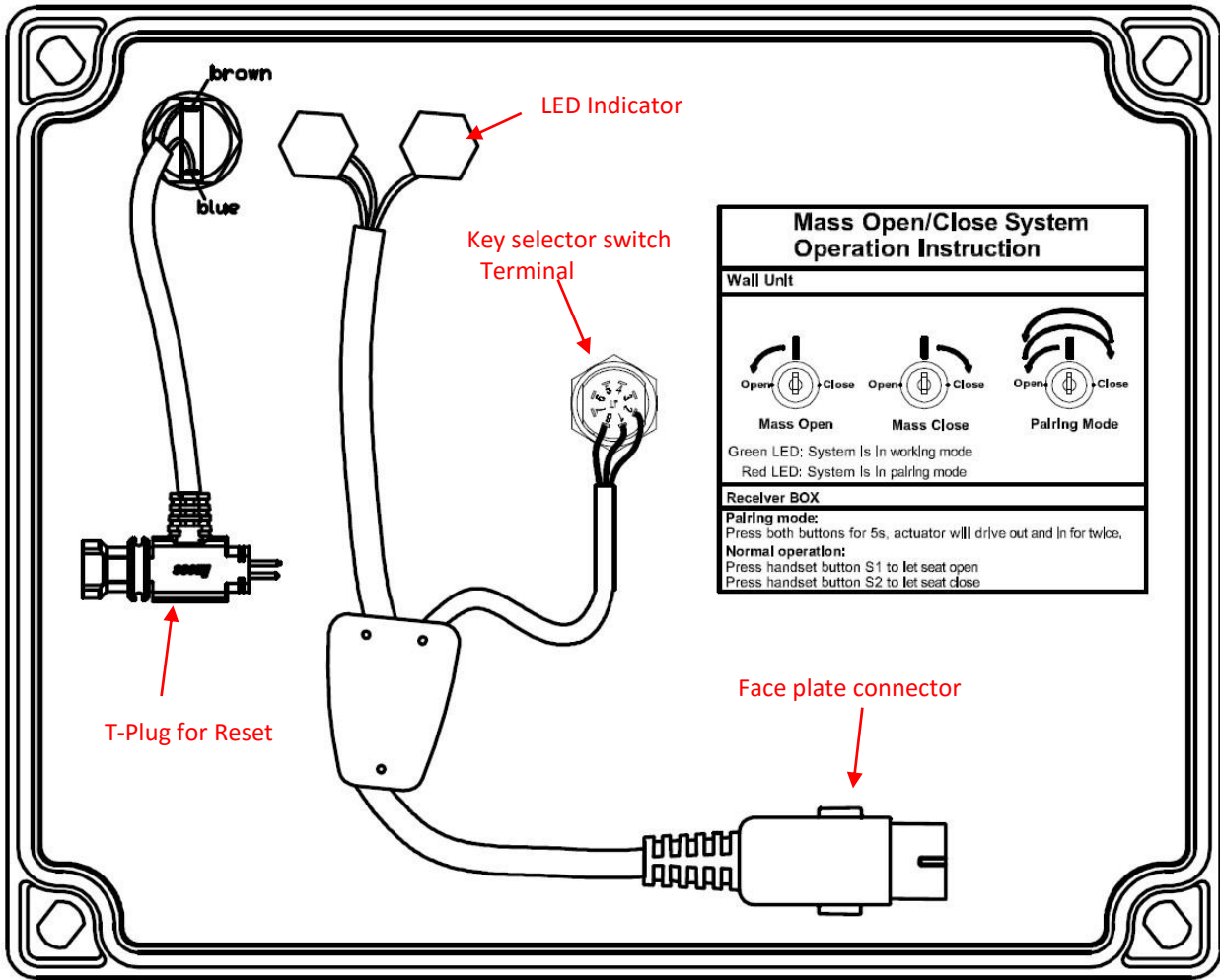
3. AC input with PG7 Connector



4. Inside Box

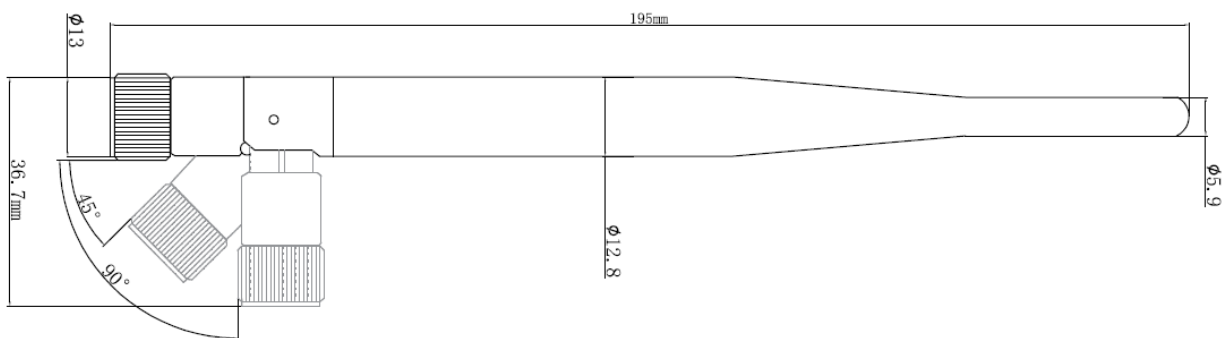


5. Front Panel

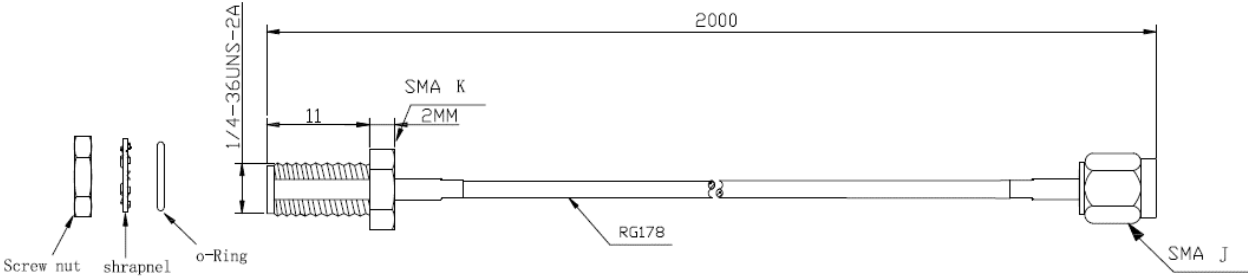


6. Accessory

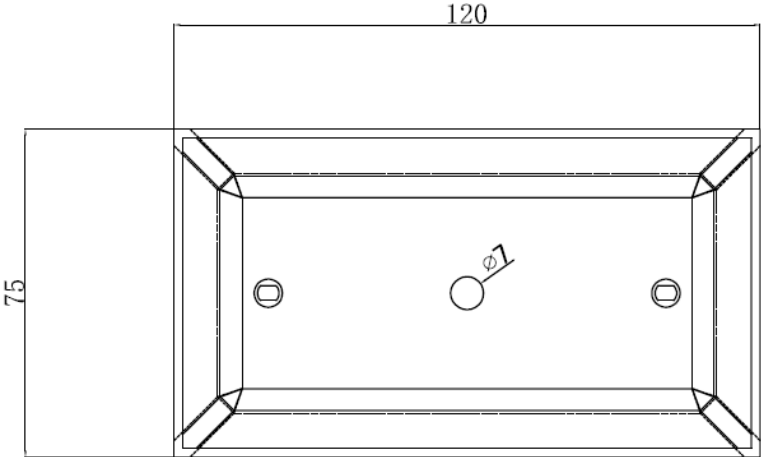
- 2.4GHz 5dBi antenna x1



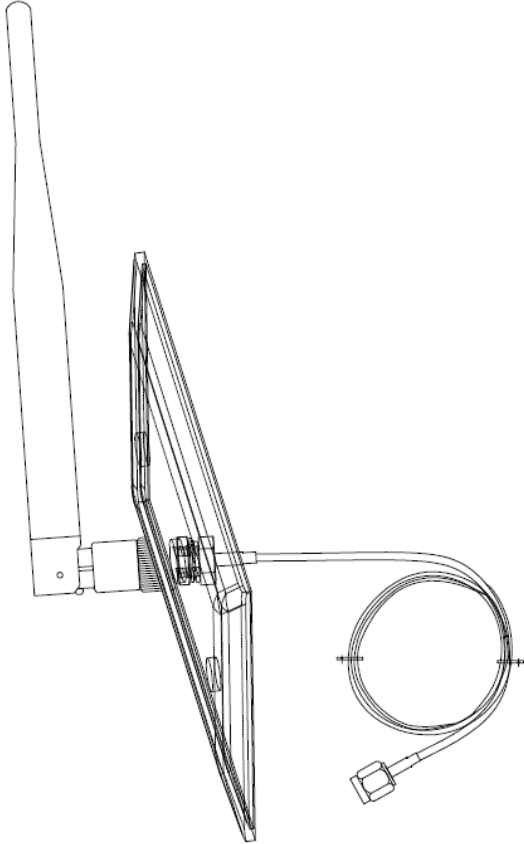
- Antenna Extension Cable 2m x1



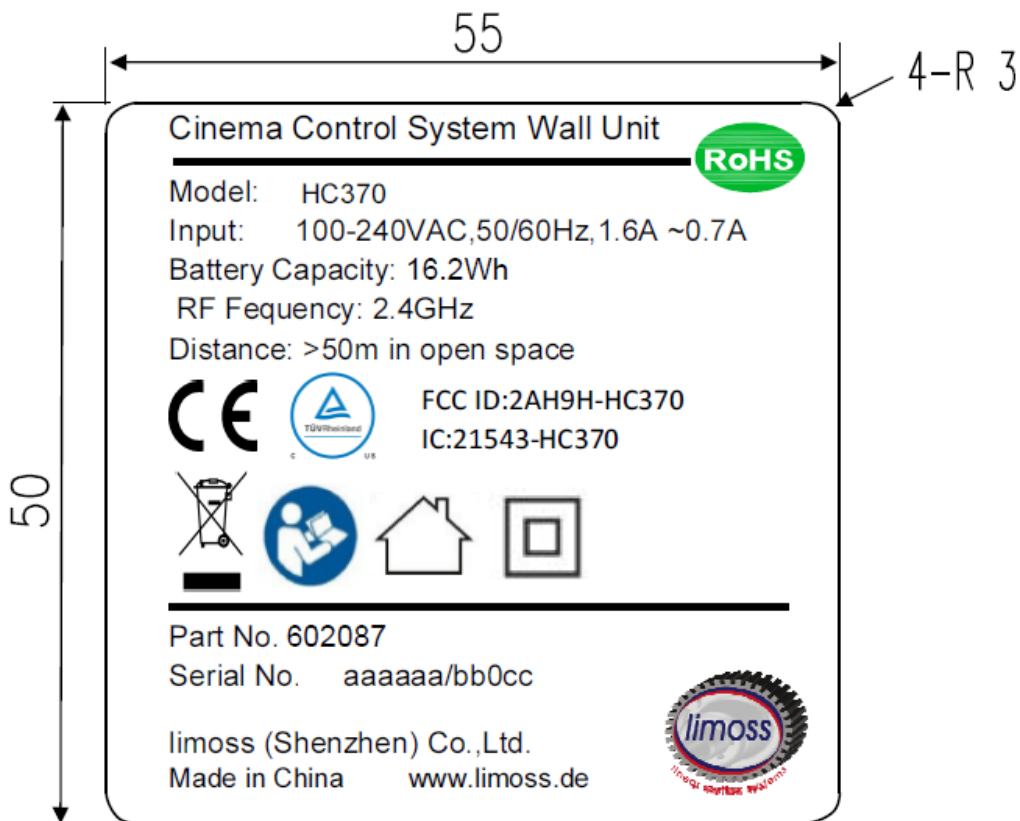
- Antenna Front Panel



- The way to assemble the face plate with antenna and extension cable.



Label



Operation Instruction:

Before all operation, please connect transmitter box to AC power, plug the receiver box MC250 to L1 actuator.

Pairing

1. Transmitter box:

- Turn the key left to position **Open**, turn right to position **Close**, and turn left to position **Open** again in 3 seconds, the pairing LED will light on, the transmitter is pairing mode.
- Turn the key any direction will exit pairing mode

2. Receiver box

press both buttons of handset for 5 seconds, if transmitter box is in pairing mode, the motor will drive out and in for twice in 4 seconds, then the pairing is finished.

Operation:

- Turn key to position **Open** to let all seats open
- Turn key to position **Close** to let all seats close
- Release the key to position **I** to standby.

Remark:

If turning the key switch 2.5 times within 1 seconds, the operation will be disabled for 5 s, and the working LED indicator will be flashing to prevent user playing with the system.

Revised history

Item	Change content	Index	Revised date
1	First issue	00	2015.12.31
2	Add the picture and description	01	2016.02.02
3	Add drawing and detail description	02	2016.05.30
4	Add the Reset button, change 1& 2 to open and close	03	2016.08.23
5	Add the Reset text on the face plate, update with new lock, add the AC cable	04	2016.09.06
6	Correct the label art. No.	05	2016.09.06
7.	Add FCC statement and IC caution , add certification list	06	2016.09.22