

XDCAM Drive Utility Software

Help

PDW-U1
PDW-U2
PDW-U4

About the XDCAM Drive Utility Software

Overview

With this software running on a computer connected to the PDW-U1, PDW-U2, or PDW-U4, you can carry out the following operations on the PDW-U1, PDW-U2, or PDW-U4.

- Display device and disc information
- Format discs
- Update the firmware
- Finalize discs (when using a Quad-Layer Write-Once (WO) disc on the PDW-U2 or PDW-U4)
- Make option settings

Related Manual

Operation Manual

This manual is supplied with the PDW-U1, PDW-U2, and PDW-U4.

It describes how to use the PDW-U1, PDW-U2, or PDW-U4 and its supplied software.

Software Updates

Before using this software, download the latest version from the Sony professional products and solutions site.

Sony Professional products and solutions site homepage:

U.S.A. <http://pro.sony.com>

Canada <http://www.sonybiz.ca>

Latin America <http://sonypro-latin.com>

Europe, Middle East and Africa <http://www.pro.sony.eu>

Japan <http://www.sonybsc.com>

Asia Pacific <http://pro.sony-asia.com>

Korea <http://bp.sony.co.kr>

China <http://pro.sony.com.cn>

How to Set Full Disk Access

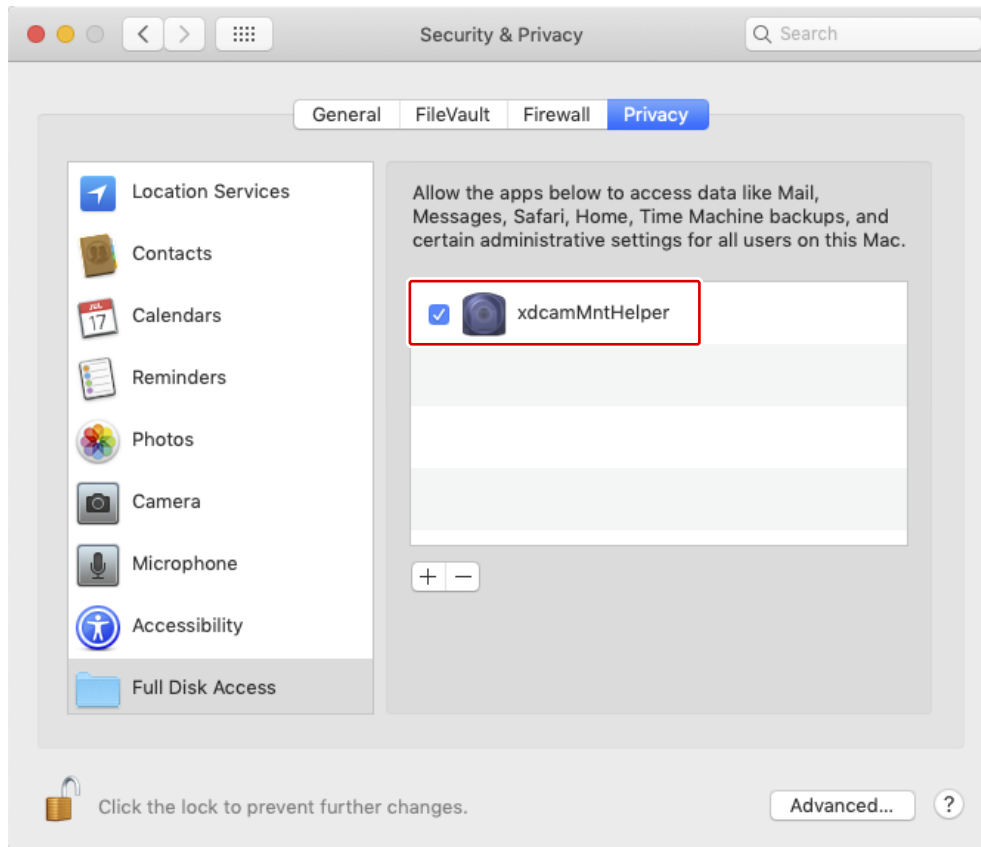
If the XDCAM Drive Software is used with macOS Catalina 10.15 or later, granting “Full Disk Access” is required due to the specification change of the OS. To set Full Disk Access, perform the following steps.

1. Open the Apple menu > [System Preferences] > [Security & Privacy].
2. Click the [Privacy] tab, then select [Full Disk Access].



3. Click the lock icon at the bottom left corner of the screen.
4. Enter the Username and Password, then click [Unlock].
5. Click the [+] button.
6. Select [Macintosh HD] > [Library] > [Application Support] > [XDCAM Drive] > [xdcamMntHelper], then click [Open].

7. Check whether [xdcamMntHelper] has been registered.



Starting and Quitting the Software

Starting

First make sure that the PDW-U1, PDW-U2, or PDW-U4 is connected to the computer.

For details on connection, refer to the operation manual.

Under default settings, XDCAM Drive Monitor will start automatically at logon. You can perform one of the following to open the XDCAM Drive Utility console window.

- Click the XDCAM Drive Monitor icon in the menu bar, and select [Open Utility Software] in the menu that appears.
- Open the folder in which this software is installed, and then double-click "XDCAMDriveUtility."

You can disable automatic startup of XDCAM Drive Monitor in the Preferences settings. When this is disabled, you can start XDCAM Drive Monitor by opening the folder in which this software is installed and double-clicking "XDCAM Drive Monitor."

Notification dialog boxes

When XDCAM Drive Monitor is running, a notification dialog box appears under the following conditions, and you can use this dialog box to directly access the relevant operating screen.

Conditions under which the notification dialog box appears:

- An unformatted disc was inserted into the PDW-U1, PDW-U2, or PDW-U4.
- The version of the PDW-U1, PDW-U2, or PDW-U4 firmware is lower than the version of this software.
- A file write error occurred.
- A hardware error occurred on the PDW-U1, PDW-U2, or PDW-U4 and the corresponding alarm code appeared.


Tip

You can change where on the screen the notification dialog box appears in the XDCAM Drive Monitor preferences.

Quitting

To close the console window

Perform one of the following to close the console window. These actions will not quit XDCAM Drive Monitor.

- Click the  (close) button in the top right corner of the window.
- Click the menu bar and select [Quit XDCAM Drive Utility] in the menu that appears.
- While this software is active, press Command + Q (press the Q key while holding down the Command key).

To quit XDCAM Drive Monitor

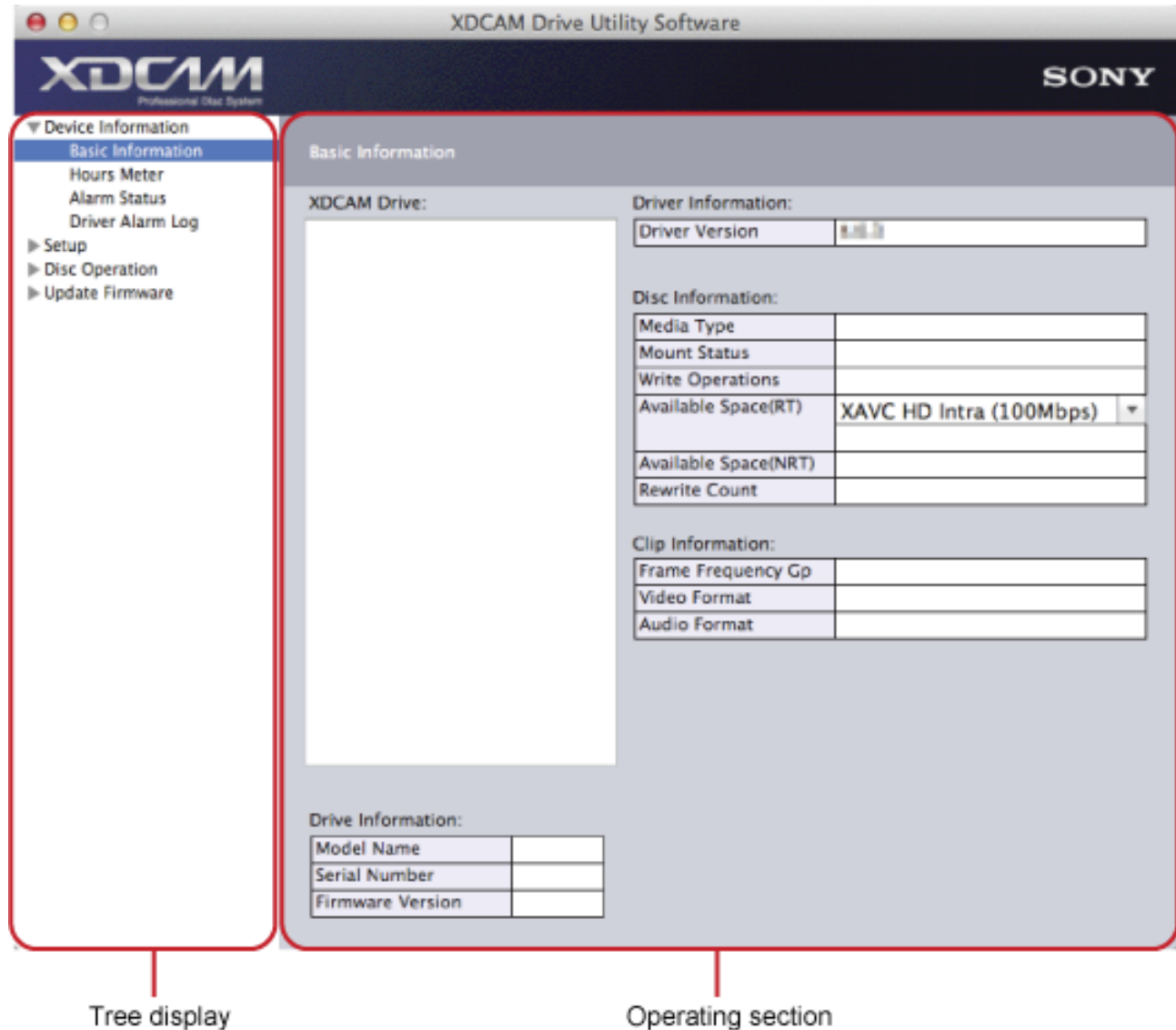
To quit XDCAM Drive Monitor, click the XDCAM Drive Monitor icon in the menu bar and select [Quit XDCAM Drive Monitor] in the menu that appears. The notification dialog box will not appear after you do so.

Tip

Automatic recovery of discs on which errors have occurred will not be performed after quitting XDCAM Drive Monitor. However, recovery can be performed manually in the volume recovery screen.

Screen Organization

Click on the name of a part of the screen to display an explanation of that part.



Tree Display

The PDW-U1, PDW-U2, and PDW-U4 function menus appear in a tree configuration here.

To display the submenus of a menu item, click the ► icon to the left of the item. The ► icon will change to a ▼ icon. (Click ▼ to close the submenu.)

Click a submenu item to display the corresponding screen in the operating section.

The tree display contains the following function menus.

- Device Information menu
 - Basic Information
 - Hours Meter
 - Alarm Status
 - Driver Alarm Log
- Setup menu
 - User Settings

- Disc Operation menu
 - Volume Recovery
 - Format
 - Finalize
- Update Firmware menu
 - Update Firmware

Operating Section

The operating screen of the function selected in the tree display appears here.

Preferences

You can configure preference settings, including those for XDCAM Drive Monitor startup and notification dialog box displays.

Configuring Preference Settings

Perform one of the following to open the Preferences dialog box for XDCAM Drive Monitor.

- Click the XDCAM Drive Monitor icon in the menu bar, and select [Open XDCAM Drive Monitor Preferences] in the menu that appears.
- Click the Apple icon in the menu bar, click [System Preferences], and then click [XDCAM Drive Monitor] in the screen that appears.

Setting Items

Application Path

Displays the path to the folder in which XDCAM Drive Monitor is installed.

Select Path

If you want to change the storage location for XDCAM Drive Monitor to a different folder, click this button and specify the path in the screen that appears.

Launch Monitor at login (for each user)

Clear this checkbox to disable automatic startup of XDCAM Drive Monitor when logging into the computer.

Quit Monitor / Launch Monitor

When XDCAM Drive Monitor is running, click the [Quit Monitor] button to quit XDCAM Drive Monitor.

When XDCAM Drive Monitor is not running, the [Launch Monitor] button appears instead. Clicking this starts XDCAM Drive Monitor.

Tip

Automatic recovery of discs on which errors have occurred will not be performed after quitting XDCAM Drive Monitor. However, recovery can be performed manually in the volume recovery screen.

Notify Dialog Options

Configure the following settings for the notification dialog boxes.

Display Duration

Specify the duration of display for the notification dialog box.

Size

Specify the size of the notification dialog box.

Starting Position

Specify where on the screen the notification dialog box will appear.

Layout of Dialogs

Specify the method in which the notification dialog box is displayed.

Test

Displays a test notification dialog box according to the configured settings.

Restore defaults

Restores all settings in the dialog box to their default configurations.

Functions of Operating Screens

Basic Information Screen (Device Information Menu)

This screen displays the following information about the PDW-U1, PDW-U2, or PDW-U4.

XDCAM Drive

This displays the model name and serial number of the connected PDW-U1, PDW-U2, or PDW-U4. The eject icon appears at the far right of the list.

Information about the PDW-U1, PDW-U2, or PDW-U4 selected here appears on the bottom and right sides of the screen. The bottom displays information about the hardware. The right displays the version of the driver software, information about the inserted disc, and information about the clips on the disc.

Drive Information

Item	Information displayed
Model Name	The name of the selected drive (PDW-U1, PDW-U2, or PDW-U4).
Serial Number	The serial number of the selected PDW-U1, PDW-U2, or PDW-U4.
Firmware Version	The firmware version of the selected PDW-U1, PDW-U2, or PDW-U4.

Driver Information

Item	Information displayed
Driver Version	The version of the currently installed driver.

Disc Information

Type of disc inserted	Item	Information displayed
Common	Media Type	The type of the disc inserted in the selected PDW-U1, PDW-U2, or PDW-U4.
	Mount Status	The mount status (including disc status) of the selected PDW-U1, PDW-U2, or PDW-U4.
	Write Operations	Whether it is possible to write to the selected PDW-U1, PDW-U2, or PDW-U4, and the reason why if it is not possible.

Type of disc inserted	Item	Information displayed
Rewritable disc (or no disc inserted)	Available Space (RT)	<p>The amount of space available for real-time data (MXF files) (unit: hours and minutes).</p> <p>The amount of space available is calculated for each of the following clips based on the selected operating point.</p> <ul style="list-style-type: none"> • DVCAM (25 Mbps): DVCAM 59.94i 4ch 16bit • IMX (50 Mbps): IMX50 59.94i 8ch 16bit • MPEG HD (35 Mbps): MPEG HD 59.94p 4ch 16bit • MPEG HD422 (50 Mbps): MPEG HD422 59.94p 8ch 24bit • XAVC HD Intra (100 Mbps): XAVC HD Intra Class100 59.94i 8ch 24bit
	Available Space (NRT)	The amount of space available for non-real-time data (files other than MXF files) (unit: bytes).
	ReWrite Count	The number of times that data has been written to the disc.
Quad-layer WO disc	Available Space (Time)	The amount of space available for recording (unit: hours and minutes).
	Available Space (Size)	The amount of space available for recording (unit: bytes).
	Write Resource	<p>An approximate guide to the amount of write space available on the disc.</p> <ul style="list-style-type: none"> • Empty: There is no write space available on the disc (writing not possible). • Few: The amount of write space available on the disc is low. • Full: There is sufficient write space available on the disc.

Clip Information

Item	Information displayed
Frame Frequency Gp	<p>The frame frequency group of clips recorded on the disc. One of the following three groups is displayed:</p> <p>50 Hz [50i, 25p, 50p], 59.94 Hz [59.94i, 29.97p, 59.94p], 23.98 Hz [23.98p]</p>

Item	Information displayed
Video Format	<p>The video format of the disc inserted in the selected PDW-U1, PDW-U2, or PDW-U4.</p> <p>A combination of the following video types and system frequencies is displayed. (Example: IMX50-625/50i)</p> <p>Video type: IMX30, IMX40, IMX50, DVCAM, HD422, HD420, XAVC Intra 100 ("---" appears if none of these is applicable.)</p> <p>System frequency: 625/50i, 525/59.94i, 1080/23.98p, 1080/25p, 1080/50i, 1080/59.94i, 1080/29.97p, 1080/23.98p, 540/23.98p, 720/59.94p, 720/50p ("---/---" appears if none of these is applicable.)</p> <p>"MIXED" appears if the disc contains clips recorded in different formats. However, combinations of XAVC and MPEG HD/IMX/DV are not supported.</p>
Audio Format	<p>The audio format of the disc inserted in the selected PDW-U1, PDW-U2, or PDW-U4.</p> <p>A combination of the following channel configurations and audio types is displayed. (Example: 8ch 16bits LPCM)</p> <p>Channel configuration: 2ch, 4ch, 8ch</p> <p>Audio type: 16bits LPCM, 24bits LPCM, 16bits NonLPCM, 24bits NonLPCM ("---" appears if none of these is applicable.)</p> <p>"MIXED" appears if the disc contains clips recorded in different formats.</p>

Notes

- When the inserted disc does not contain any clips, "ANY" appears in the [Frame Frequency Gp], [Video Format], and [Audio Format] fields.
- In the following cases, "---" appears in the [Frame Frequency Gp], [Video Format], and [Audio Format] fields.
 - No disc is inserted, or the disc is not inserted properly.
 - An unsupported disc is inserted.
 - The disc cannot be recognized because of an error or for any other reason.
- Regardless of the [Prohibit mixed recording] setting in the User Settings screen, "MIXED" appears in the [Video Format] field when a mixed recorded disc is inserted.
- Even when their video formats are the same, clips are handled as clips with different formats if their audio formats are not the same.
- Video types that differ only in their bit rates are handled as the same video format.

Refreshing the Display

Select [Update] from the View menu.

Hours Meter Screen (Device Information Menu)

This screen displays information about the operational history of the PDW-U1, PDW-U2, or PDW-U4. Use the information as a guide in scheduling periodic maintenance. For details on periodic maintenance, consult your Sony service representative.

XDCAM Drive

This displays the model name and serial number of the connected PDW-U1, PDW-U2, or PDW-U4. The eject icon appears at the far right of the list.

Information about the PDW-U1, PDW-U2, or PDW-U4 selected here appears on the bottom and right sides of the screen. The bottom displays information about the hardware. The right displays information about the operational history.

Drive Information

Item	Information displayed
Model Name	The name of the selected drive (PDW-U1, PDW-U2, or PDW-U4).
Serial Number	The serial number of the selected PDW-U1, PDW-U2, or PDW-U4.
Firmware Version	The firmware version of the selected PDW-U1, PDW-U2, or PDW-U4.

Hours Meter

Item	Information displayed
Operation Hours	The total number of hours the PDW-U1, PDW-U2, or PDW-U4 has been powered on (unit: hours).
Laser Parameter	The cumulative light output time of the optical head.
Seek Running Hours (PDW-U1)	The cumulative seek time of the optical head (unit: hours).
Seek Counter (PDW-U2 or PDW-U4)	The cumulative number of seek operations of the optical head.
Spindle Running Hours	The cumulative spindle rotation time (unit: hours).
Loading Counter	The total number of times that discs have been inserted.

Refreshing the Display

Select [Update] from the View menu.

Alarm Status Screen (Device Information Menu)

This screen displays information about any alarms that may have occurred on the selected PDW-U1, PDW-U2, or PDW-U4. This information is preserved until the next alarm is generated or until the PDW-U1, PDW-U2, or PDW-U4 is powered off.

XDCAM Drive

This displays the model name and serial number of the connected PDW-U1, PDW-U2, or PDW-U4. The eject icon appears at the far right of the list.

Information about the PDW-U1, PDW-U2, or PDW-U4 selected here appears on the bottom and right

sides of the screen. The bottom displays information about the hardware. The right displays information about alarm occurrences.

Drive Information

Item	Information displayed
Model Name	The name of the selected drive (PDW-U1, PDW-U2, or PDW-U4).
Serial Number	The serial number of the selected PDW-U1, PDW-U2, or PDW-U4.
Firmware Version	The firmware version of the selected PDW-U1, PDW-U2, or PDW-U4.

Alarm Code

This displays the code number of the alarm that occurred on the selected PDW-U1, PDW-U2, or PDW-U4.

Details

This displays information about the alarm that occurred on the selected PDW-U1, PDW-U2, or PDW-U4 and information about how to deal with it.

For details on alarms, see "Alarm Lists."

Refreshing the Display

Select [Update] from the View menu.

Driver Alarm Log Screen (Device Information Menu)

This screen displays the driver alarm log.

Date

Specify a date to display a list of the alarms that occurred on that date.

Click to display a list of dates for which logs exist.

Alarm Log

Displays the alarm list for the selected date.

By default, the alarms for the most recent date are displayed. You can click the columns to sort the alarm list.

[Export] button

Exports alarm logs to a folder.

Clicking this button opens a dialog box. If you specify an export destination folder and click the [Save] button, multiple log files will be compressed as a ZIP file and saved to the specified folder.

Refreshing the Display

Select [Update] from the View menu.

User Settings Screen (Setup menu)

You can make the following PDW-U1, PDW-U2, or PDW-U4 settings.

Underlined values in the settings column of the table indicate the factory default settings.

Note

To apply changes to settings, you must reinsert the disc.

Item	Sub-items/settings	
Ownership Information	Select whether to set the UMID (Unique Material Identifier) ownership information defined by SMPTE 330M. <u>Off</u> : Do not set the ownership information. <u>On</u> : Set the ownership information.	
	Country Code	Enter an abbreviated alphanumeric string (4-byte alphanumeric string) according to the values defined in ISO 3166-1. Click the [...] button to open a dialog box where you can select a country, and then click the [3-character] or [2-character] button. This enters a country code that corresponds to the button you clicked.
	Organization Code	Enter an abbreviated 4-byte alphanumeric string for the organization code. However, ownership information is applied only when extended UMIDs do not exist in the original material. Note Organization codes must be acquired by applying to the SMPTE registration office. If no organization code has been acquired, it is forbidden to enter an arbitrary string. As a rule, the code "00" must be entered. Freelance operators who do not belong to an organization should enter "~".
	User Code	Enter a 4-byte alphanumeric string for user identification. The user code is registered with each organization locally. It is usually not centrally registered. This user code is determined by the organization. Note A user code cannot be entered when no organization code has been entered.

Item	Sub-items/settings
Naming Form	<p>Specify the clip and clip list naming format. (Specify whether to allow files with user-defined names.)</p> <p>C****: Standard format (Do not allow files with user-defined names.)</p> <p>free: Free format (Allow files with user-defined names.)</p> <p>For details on the restrictions, see "File Operation Restrictions."</p>
TC MODE	<p>Specify how to record clip time codes. The starting point for a TC of a source MXF that is being written for the first time will always be set to "00:00:00:00."</p> <p>Reuse TC in the source MXF: Use the time code of the clip.</p> <p>Generate contiguous TC: Generate a time code that is continuous with previously recorded time code.</p>
DF MODE	<p>Specify the frame mode of the time code when [Generate contiguous TC] is selected in the TC MODE item.</p> <p>Drop Frame: Drop frame (Perform frame rate compensation.)</p> <p>Non Drop Frame: Non-drop frame (Do not perform frame rate compensation.)</p>
NON-AUDIO INPUT	<p>Set the audio signal recording mode for each channel.</p> <p>Off: Record audio streams as audio.</p> <p>On: Record audio signals as data. When this is selected, specify the channels (1/2ch, 3/4ch, 5/6ch, 7/8ch) to record as data. (You can specify multiple.)</p> <p>Notes</p> <ul style="list-style-type: none"> • When this checkbox is selected, you must specify a channel. If all the channels are left unspecified, a warning message will appear when you click the [OK] or [Apply] button. • Depending on the device, the channels specified here may not be recognized as audio data, and proper audio playback may not be possible.
DATA ITEM OUT	<p>Select whether to output Data Item Out signals added to MXF files.</p> <p>Off: Do not output the Data Item Out signal.</p> <p>On: Output the Data Item Out signal.</p>
Hide PROAV folder	<p>Select whether to display files below the PROAV folder.</p> <p>Off: Display files below the PROAV folder. (Set the hidden file attribute to off.)</p> <p>On: Do not display files below the PROAV folder. (Set the hidden file attribute to on.)</p>
Inhibit recording on the drive	<p>Select whether to inhibit recording by the PDW-U1, PDW-U2, or PDW-U4.</p> <p>Off: Do not inhibit recording.</p> <p>On: Inhibit recording.</p>

Item	Sub-items/settings
Prohibit mixed recording	<p>Specify whether to prohibit MPEG HD / IMX / DVCAM mixed recording. If you prohibit mixed recording, discs that contain clips recorded in different formats are treated as read-only discs.</p> <p>Off: Allow MPEG HD / IMX / DVCAM mixed recording.</p> <p>On: Prohibit MPEG HD / IMX / DVCAM mixed recording.</p> <p>Note</p> <p>If a clip recorded in XAVC HD Intra format exists, mixed recording of other materials (MPEG HD / IMX / DVCAM) is not possible.</p>
Write-verify	<p>Write a file on the volume while verifying if the write is successful. This item is available only for PDW-U4 firmware version 2.000 or later.</p> <p>Off: Do not write-verify.</p> <p>On: Write-verify</p>

Tip for mixed format recording mode

As long as the frame frequency group is the same, clips in different recording formats can be recorded or written to the same disc¹⁾. The system frequencies supported by this unit are divided into frame frequency groups, as shown in the following table.

1) The recording format is regarded as different whenever the system frequency, video resolution, video codec/bit rate, or number of audio channels or number of bits does not match.

Frame frequency group	System frequency
59.94Hz	59.94P
	59.94i
	29.97P
50Hz	50P
	50i
	25P
23.98Hz	23.98P

You can record clips with different recording formats, for example HD422 and HD420SP clips, by putting this unit into mixed format recording mode.

Note

Continuous playback may not be possible at the transition point between two clips with different recording formats.

Applying Changes to the Settings

1. Click the [Apply] button.

The message "The setting has been changed. Please reinsert the disc." appears.

Note

If you select another screen before clicking the [Apply] button, changes to the settings are discarded.

2. Reinsert the disc and click the [OK] button.

The changes to the settings are applied.

Restoring Default Settings

1. Click the [Reset] button.

The message "The display content has been reset to the factory setting." appears.

2. Click the [OK] button.

The message "Reset to factory default settings. To reflect the changes in the display, press the Apply button." appears.

3. Click the [OK] button to erase the message, and then click the [Apply] button.

The message "The setting has been changed. Please reinsert the disc." appears.

4. Reinsert the disc and click the [OK] button.

The settings are reset to the factory default settings.

Volume Recovery Screen (Disc Operation Menu)

When XDCAM Drive Monitor is running and discs that contain volumes for which errors have occurred are inserted in the PDW-U1, PDW-U2, or PDW-U4, automatic volume recovery is performed at the following timings.

- When a drive that contains a disc that requires recovery is connected to the computer
- When a disc that requires recovery is inserted into a drive that is connected to the computer

Recovery can be performed manually in the volume recovery screen when XDCAM Drive Monitor is not running. The following information on the PDW-U1, PDW-U2, or PDW-U4 is displayed in the volume recovery screen.

XDCAM Drive

This displays the model name and serial number of the connected PDW-U1, PDW-U2, or PDW-U4. The eject icon appears at the far right of the list.

Information about the PDW-U1, PDW-U2, or PDW-U4 selected here appears on the bottom and right sides of the screen. The bottom displays information about the hardware. The right displays information about the inserted disc.

Drive Information

Item	Information displayed
Model Name	The name of the selected drive (PDW-U1, PDW-U2, or PDW-U4).
Serial Number	The serial number of the selected PDW-U1, PDW-U2, or PDW-U4.
Firmware Version	The firmware version of the selected PDW-U1, PDW-U2, or PDW-U4.

Disc Information

Item	Information displayed
Media Type	The type of the disc inserted in the selected PDW-U1, PDW-U2, or PDW-U4.
Mount Status	The mount status (including disc status) of the selected PDW-U1, PDW-U2, or PDW-U4.
Write Operations	Whether it is possible to write to the selected PDW-U1, PDW-U2, or PDW-U4, and the reason why if it is not possible.
Details	Details of the mount status.

Manually Recovering a Volume on which an Error has been Detected

1. From the [XDCAM Drive] list, select the PDW-U1, PDW-U2, or PDW-U4 on which you want to recover the volume.
2. Check that the disc is inserted in the selected PDW-U1, PDW-U2, or PDW-U4, and then click the [Start] button.

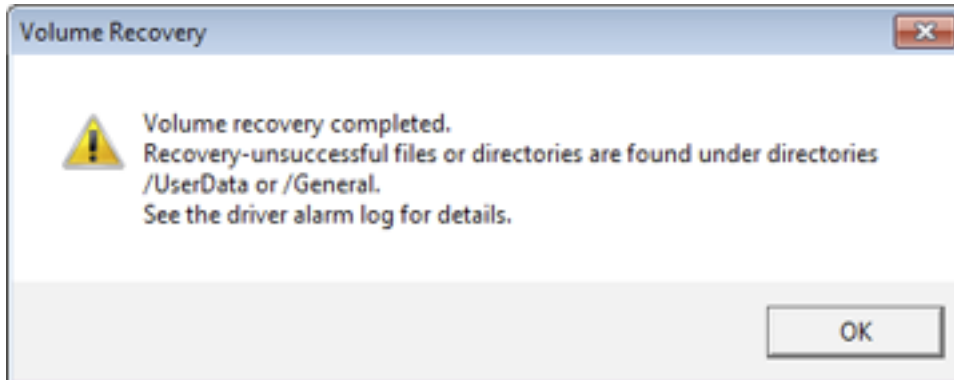
A confirmation message box appears.

3. Click the [OK] button.

Recovery of the volume starts. A progress bar is displayed during the recovery. When processing finishes, a message indicating the result appears.

Notes

- Discs damaged by XDCAM devices other than the PDW-U1, PDW-U2, or PDW-U4 cannot be recovered with this software.
- Discs damaged by the PDW-U1, PDW-U2, or PDW-U4 cannot be recovered with XDCAM devices other than the PDW-U1, PDW-U2, or PDW-U4.
- Do not eject the disc, turn off the PDW-U1, PDW-U2, or PDW-U4 or the computer, or disconnect the USB cable, or switch the users during the recovery of a volume.
- When volume recovery is complete, the following dialog box appears. Both read and write operations will be available for the disc, but if you want to recover files or directories for which recovery was unsuccessful (stored under the /UserData and /General directories), contact your local Sony representative.



Format Screen (Disc Operation Menu)

This screen displays the following information about the PDW-U1, PDW-U2, or PDW-U4.

XDCAM Drive

This displays the model name and serial number of the connected PDW-U1, PDW-U2, or PDW-U4. The eject icon appears at the far right of the list.

Information about any disc inserted in the PDW-U1, PDW-U2, or PDW-U4 selected here appears on the right side of the screen.

Drive Information

Item	Information displayed
Model Name	The name of the selected drive (PDW-U1, PDW-U2, or PDW-U4).
Serial Number	The serial number of the selected PDW-U1, PDW-U2, or PDW-U4.
Firmware Version	The firmware version of the selected PDW-U1, PDW-U2, or PDW-U4.

Disc Information

Type of disc inserted	Item	Information displayed
Common	Media Type	The type of the disc inserted in the selected PDW-U1, PDW-U2, or PDW-U4.
	Mount Status	The mount status (including disc status) of the selected PDW-U1, PDW-U2, or PDW-U4.
	Write Operations	Whether it is possible to write to the selected PDW-U1, PDW-U2, or PDW-U4, and the reason why if it is not possible.
Rewritable disc (or no disc inserted)	Available Space (RT)	The amount of space available for real-time data (MXF files) (unit: hours and minutes).
	Available Space (NRT)	The amount of space available for non-real-time data (files other than MXF files) (unit: bytes).
	ReWrite Count	The number of times that data has been written to the disc.
Quad-layer WO disc	Available Space (Time)	The amount of space available for recording (unit: hours and minutes).
	Available Space (Size)	The amount of space available for recording (unit: bytes).
	Write Resource	An approximate guide to the amount of write space available on the disc. <ul style="list-style-type: none">• Empty: There is no write space available on the disc (writing not possible).• Few: The amount of write space available on the disc is low.• Full: There is sufficient write space available on the disc.

Formatting a Disc

1. From the [XDCAM Drive] list, select the PDW-U1, PDW-U2, or PDW-U4 on which you want to format a disc.
2. Check that the disc is inserted in the selected PDW-U1, PDW-U2, or PDW-U4, and then click the [Start] button.
A confirmation message box appears.

3. Click the [OK] button.

Formatting of the disc starts. A progress bar is displayed during the format. When processing finishes, a message indicating the result appears.

Note

Do not eject the disc, turn off the PDW-U1, PDW-U2, or PDW-U4 or the computer, or disconnect the USB cable, or switch the users during the formatting.

Finalize Screen (Disc Operation Menu)

This screen displays the following information about the PDW-U1, PDW-U2, or PDW-U4.

Notes

- Writing to and finalization of quad-layer WO discs is supported by the PDW-U2 and PDW-U4 only. This screen appears even when the PDW-U1 is connected, but operations in the screen are ignored.
- A disc that has been finalized becomes a read-only disc. Nothing more can be written to the disc.

XDCAM Drive

This displays the model name and serial number of the connected PDW-U1, PDW-U2, or PDW-U4. The eject icon appears at the far right of the list.

Information about the PDW-U1, PDW-U2, or PDW-U4 selected here appears on the bottom and right sides of the screen. The bottom displays information about the hardware. The right displays information about the inserted disc.

Drive Information

Item	Information displayed
Model Name	The name of the selected drive (PDW-U1, PDW-U2, or PDW-U4).
Serial Number	The serial number of the selected PDW-U1, PDW-U2, or PDW-U4.
Firmware Version	The firmware version of the selected PDW-U1, PDW-U2, or PDW-U4.

Disc Information

Type of disc inserted	Item	Information displayed
Common	Media Type	The type of the disc inserted in the selected PDW-U1, PDW-U2, or PDW-U4.
	Mount Status	The mount status (including disc status) of the selected PDW-U1, PDW-U2, or PDW-U4.
	Write Operations	Whether it is possible to write to the selected PDW-U1, PDW-U2, or PDW-U4, and the reason why if it is not possible.

Type of disc inserted	Item	Information displayed
Rewritable disc	Available Space (RT)	The amount of space available for real-time data (MXF files) (unit: hours and minutes).
	Available Space (NRT)	The amount of space available for non-real-time data (files other than MXF files) (unit: bytes).
	ReWrite Count	The number of times that data has been written to the disc.
Quad-layer WO disc (or no disc inserted)	Available Space (Time)	The amount of space available for recording (unit: hours and minutes).
	Available Space (Size)	The amount of space available for recording (unit: bytes).
	Write Resource	An approximate guide to the amount of write space available on the disc. <ul style="list-style-type: none"> • Empty: There is no write space available on the disc (writing not possible). • Few: The amount of write space available on the disc is low. • Full: There is sufficient write space available on the disc.

Finalizing a Disc

1. From the [XDCAM Drive] list, select the PDW-U2 or PDW-U4 on which you want to finalize a disc.
2. Check that the quad-layer disc is inserted in the selected PDW-U2 or PDW-U4, and then click the [Start] button.

A confirmation message box appears.

3. Click the [OK] button.

Finalizing of the disc starts. A progress bar is displayed during the finalization. When processing finishes, a message indicating the result appears.

Notes

- If the inserted disc is a rewritable disc, the [Start] button is disabled.
- Do not eject the disc, turn off the PDW-U2 or PDW-U4 and the computer, or disconnect the USB cable, or switch the users during the finalization.

Update Firmware Screen (Update Firmware Menu)

This screen allows you to update the firmware of the currently selected PDW-U1, PDW-U2, or PDW-U4.

XDCAM Drive

This displays the model name and serial number of the connected PDW-U1, PDW-U2, or PDW-U4. The eject icon appears at the far right of the list.

Information about the PDW-U1, PDW-U2, or PDW-U4 selected here appears on the bottom and right

sides of the screen. The bottom displays information about the hardware. The right displays version information about the firmware.

Drive Information

Item	Information displayed
Model Name	The name of the selected drive (PDW-U1, PDW-U2, or PDW-U4).
Serial Number	The serial number of the selected PDW-U1, PDW-U2, or PDW-U4.
Firmware Version	The firmware version of the selected PDW-U1, PDW-U2, or PDW-U4.

Firmware Version

Item	Information displayed
Firmware Version	The current version of the firmware of the selected PDW-U1, PDW-U2, or PDW-U4.
Package Version	The version of the package firmware of the selected PDW-U1, PDW-U2, or PDW-U4.

Updating the Firmware

1. From the [XDCAM Drive] list, select the PDW-U1, PDW-U2, or PDW-U4 on which you want to update the firmware.

The current firmware version of the selected PDW-U1, PDW-U2, or PDW-U4 is displayed.

Check that the package version is newer than the firmware version. If the package version is older than the firmware version, the [Update] button is disabled.

2. Eject any disc that may be inserted in the selected PDW-U1, PDW-U2, or PDW-U4, and then click the [Update] button.

A confirmation message box appears.

3. Click the [OK] button.

The firmware update starts. A progress bar is displayed during the update. When processing finishes, a message indicating the result appears.

4. Turn the PDW-U1, PDW-U2, or PDW-U4 off, and then turn it on again.

Notes

- The firmware version cannot be downgraded.
- When updating starts, the message, "Eject the disc." appears if a disc is inserted into the PDW-U1, PDW-U2, or PDW-U4. Eject the disc before starting the update.
- Do not turn off the PDW-U1, PDW-U2, PDW-U4 or the computer, or disconnect the USB cable or switch the users during the firmware update.
- After the firmware update finishes, it is necessary to turn the PDW-U1, PDW-U2, or PDW-U4 off and then turn it on again.

Handling Files

About File Operations

This section describes how to handle video and audio data as files by connecting a computer to the PDW-U1, PDW-U2, or PDW-U4 via the USB interface.

- Directory Structure
- File Operation Restrictions
- Preparations for File Operations
- File Operations

Tip

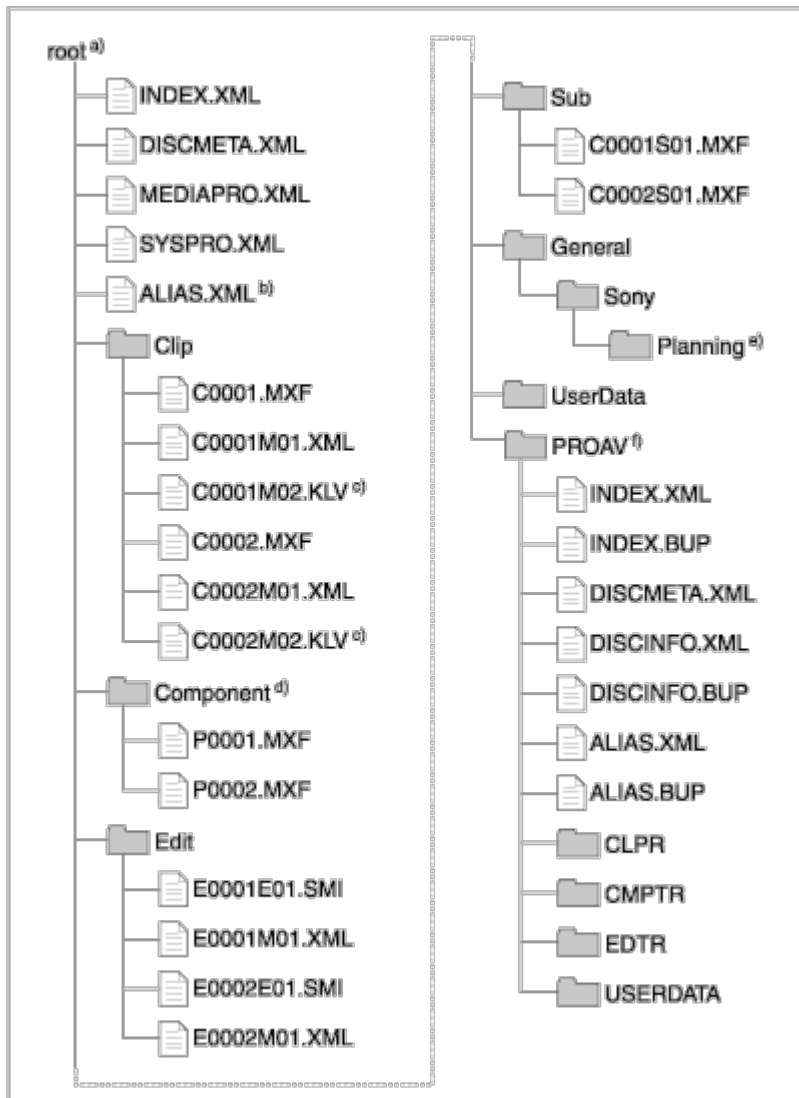
User data (files other than XDCAM AV files) can be recorded on Professional Discs as PC data (User data recording mode). This allows Professional Discs to be used as data recording media, with a data storage capacity of 120 GB (when PFD128QLW quad-layer WO discs are used).

Notes

- The maximum number of files that can be created on a disc is 5,000 for single-layer discs, 6,000 for dual-layer discs, and 20,000 for triple-layer discs and quad-layer WO discs (including directories). The maximum number of clips that can be created on a disc is 300 for single-layer and dual-layer discs, and 1,200 for triple-layer discs and quad-layer WO discs. If this limit is reached, nothing more can be written to the disc, even if the disc still has free capacity remaining.
- Directly editing or executing files stored in the UserData directory may cause an error depending on the type or settings of the application.
Specifically, avoid execution of applications that attempt to create a temporary work area in the directory, and direct execution of executable files stored in the directory.

Directory Structure (Preliminary Knowledge for File Operations)

The following figure shows the directory structure of discs visible to a remote computer.



a) Root directory.

b) Only when [Naming Form] in the User Settings screen of this software is set to [free].

c) Only when KLV files are contained.

d) Directories and files automatically created through voice-over editing with a PDW-HR1.

e) A directory in which to save planning metadata. For details on planning metadata, refer to the operation manuals for XDCAM devices that support planning metadata.

f) Only when the [Hide PROAV folder] checkbox in the User Settings screen of this software is not selected.

File Operation Restrictions (Preliminary Knowledge for File Operations)

This section explains which operations are possible on files stored in each directory.

Root Directory

File name	Description	Operations				
		Read	Write	Rename	Create	Delete
INDEX.XML	Contains data for management of the audio/video material on the disc.	Yes	No	No	No	No
DISCMETA.XML	Contains metadata to indicate the disc properties.	Yes	Yes ^{a)}	No	No	No
MEDIAPRO.XML	Contains a list of audio/video material on the disc, basic properties, related information, and information about access methods.	Yes	No	No	No	No
SYSPRO.XML	Contains information about device system settings and menu settings.	Yes	No	No	No	No
ALIAS.XML ^{b)}	Contains conversion tables for assigning user-defined names to clips and clip lists.	Yes	No	No	No	No
Other files	Files other than the above.	–	No	–	No	–

a) Only files which can be written by an XDCAM device.

b) Only when [Naming Form] in the User Settings screen of this software is set to [free].

Notes

- Directories cannot be created in the root directory.
- The directories in the root directory (Clip, Component, Edit, Sub, UserData, PROAV and General) cannot be deleted or renamed.

Clip Directory

File name	Description	Operations				
		Read	Write	Rename	Create	Delete
C*.MXF ^{a)}	Clip file created by recording (MXF file). *: 0001 to 9999	Yes	Yes ^{b) c)}	Yes ^{d)}	Yes ^{b)}	Yes ^{e)}
C*M01.XML ^{a)}	Metadata file generated automatically when C*.MXF file is created. *: 0001 to 9999	Yes	Yes ^{f)}	No ^{g)}	No ^{h)}	No ⁱ⁾
Other files	Files other than the above.	–	No	–	No	–

- a) The unit can handle files with user-defined names in the "C*" section.
- b) Only files that can be overwritten by an XDCAM device and that are 2 seconds or longer in length, in a format matching the format (system frequency) and recording format (MPEG HD / IMX / XAVC / DV and number of audio channels) of the recorded sections of the disc.
- c) Overwriting is not possible.
- d) Only when [Naming Form] in the User Settings screen of this software is set to [free].
- e) When the [Inhibit recording on the drive] checkbox on the User Setting screen of this software is not selected, you can select and delete any clip.
- f) Only files which can be written by an XDCAM device.
- g) When the "C*" section of a C*.MXF file name is changed, a C*M01.XML file with the same name in the "C*" section is also changed automatically.
- h) When a C*.MXF file is created, a C*M01.XML file with the same name in the "C*" section is created automatically.
- i) When a C*.MXF file is deleted, a C*M01.XML file with the same name in the "C*" section is also deleted automatically.

Note

Directories cannot be created in the Clip directory.

Component Directory

File name	Description	Operations				
		Read	Write	Rename	Create	Delete
P*.MXF ^{a)}	Audio clip file (MXF file) generated automatically during voice-over editing with a PDW-HR1. *: 0001 to 9999	Yes ^{a)}	Yes ^{b) c) d)}	Yes ^{e)}	Yes ^{b) d)}	Yes ^{f)}
Other files	Files other than the above.	No	No	No	No	No

- a) The unit can handle files with user-defined names in the "P*" section.
- b) Only files that can be written by an XDCAM device and that are 2 seconds or longer in length.
- c) Overwriting is not possible.
- d) Multiple files cannot be opened simultaneously.
- e) Only when [Naming Form] in the User Settings screen of this software is set to [free].
- f) Any clip can be selectively deleted.

Note

Directories cannot be created in the Component directory.

Edit Directory

File name	Description	Operations				
		Read	Write	Rename	Create	Delete
E*E01.SMI ^{a)}	Clip list file. *: 0001 to 0099	Yes	Yes ^{b)}	Yes	Yes ^{c)}	Yes ^{d)}
E*M01.XML ^{a)}	Metadata file generated automatically when E*E01.MXF file is created. *: 0001 to 0099	Yes	Yes ^{b)}	No ^{e)}	No ^{f)}	No ^{g)}
Other files	Files other than the above.	–	No	–	No	–

- a) The unit can handle files with user-defined names in the "E*" section.
- b) Only files that can be written by an XDCAM device. Partial writing is not possible.

- c) Only files which can be written by an XDCAM device.
- d) When the [Inhibit recording on the drive] checkbox in the User Setting screen of in this software is not selected.
- e) When the "E*" section of an E*E01.SMI file name is changed, an E*M01.XML file with the same name in the "E*" section is also changed automatically.
- f) When an E*E01.SMI file is created, an E*M01.XML file with the same name in the "E*" section is created automatically.
- g) When an E*E01.SMI file is deleted, an E*M01.XML file with the same name in the "E*" section is also deleted automatically.

Note

Directories cannot be created in the Edit directory.

Sub Directory

File name	Description	Operations				
		Read	Write	Rename	Create	Delete
C*S01.MXF ^{a)}	Proxy AV data (MXF file) generated automatically when C*.MXF file is created. *: 0001 to 9999	Yes	No	No ^{b)}	No ^{c)}	No ^{d)}
Other files	Files other than the above.	–	No	–	No	–

- a) The unit can handle files with user-defined names in the "C*" section.
- b) When the "C*" section of a C*.MXF file name in the Clip directory is changed, a C*S01.XML file with the same name in the "C*" section is also changed automatically in the Sub directory.
- c) When a C*.MXF file is created in the Clip directory, a C*S01.XML file with the same name in the "C*" section is also created automatically in the Sub directory.
- d) When a C*.MXF file is deleted in the Clip directory, a C*S01.XML file with the same name in the "C*" section is also deleted automatically in the Sub directory.

Note

Directories cannot be created in the Sub directory.

General Directory

File name	Description	Operations				
		Read	Write	Rename	Create	Delete
User-defined		Yes	Yes	Yes ^{a)}	Yes	Yes ^{b)}

- a) UTF-8 file names can be up to 63 bytes in length. (Depending on the character type or the operation system, file names (including extensions) may be limited to 21 characters.)
- b) When the [Inhibit recording on the drive] checkbox in the User Setting screen of in this software is not selected.

The following directory operations are possible in the General directory.

- Directory creation (up to 63 levels, including the General directory)
- Deletion and renaming of directories

UserData Directory

File name	Description	Operations				
		Read	Write	Rename	Create	Delete
User-defined		Yes	Yes	Yes ^{a)}	Yes	Yes

- a) File names can be up to 63 bytes in length using only UTF-8 character encoding. (Depending on the character type, file names (including extension) may be limited to 21 characters.)

The following directory operations are possible in the UserData directory.

- Directory creation (up to 62 levels, including the UserData directory)
- Deletion and renaming of directories

Notes

- The maximum number of files that can be created on a disc is 5,000 for single-layer discs, 6,000 for dual-layer discs, and 20,000 for triple-layer discs and quad-layer WO discs (including directories). The maximum number of clips that can be created on a disc is 300 for single-layer and dual-layer discs, and 1,200 for triple-layer discs and quad-layer WO discs. If this limit is reached, nothing more can be written to the disc, even if the disc still has free capacity remaining.
- Directly editing or executing files stored in the UserData directory may cause an error depending on the type or settings of the application.
Specifically, avoid execution of applications that attempt to create a temporary work area in the directory, and direct execution of executable files stored in the directory.

Preparations for File Operations

Perform the following.

1. Connect the PDW-U1, PDW-U2, or PDW-U4 to a computer.
2. Turn the PDW-U1, PDW-U2, or PDW-U4 and the computer on.
3. In the User Setting Screen under the setup menu of this software, set items as required.
4. Insert a disc into the PDW-U1, PDW-U2, or PDW-U4.

Note

For details on connection and power preparation, refer to the operation manual of the PDW-U1, PDW-U2, or PDW-U4.

File Operations

Accessing Files with Nonlinear Editing Software

For details on the file access operations, refer to the manual provided with the editing software you are using.

Accessing Files with Finder

Start Finder and check that the PDW-U1, PDW-U2, or PDW-U4 has been assigned to a drive. (The drive assigned will differ depending on the number of other peripherals connected to the remote computer.) You can perform file operations on the disc inserted in the PDW-U1, PDW-U2, or PDW-U4 in the same way that you operate on local drives and files on network computers.

Note

All file operations are not possible for some types of files. For details, see "File Operation Restrictions."

To eject discs from a remote computer

Click the Eject button to the right of the PDW-U1, PDW-U2, or PDW-U4 icon in the Finder, or drag and drop the icon to the eject icon in the Dock.

Appendix

Alarm Lists

The following lists show the alarms displayed in the Alarm Status screen for each state of the PDW-U1, PDW-U2, or PDW-U4.

- Alarms when a Disc is Inserted
- Alarms during Operation
- Alarms Relating to Sensors and Drives

Alarms when a Disc is Inserted

LED ^{a)}	Alarm code	Description	Possible solution
Flashes four times per second ^{b)}	50-010 (PDW-U4) 50-011 (PDW-U4) 51-500 51-02X (PDW-U1) 51-010 (PDW-U2, PDW-U4) 51-011 (PDW-U2, PDW-U4) 51-020 (PDW-U2, PDW-U4) 51-021 (PDW-U2, PDW-U4)	The disc information could not be read.	The disc cannot be used. Insert a different disc that is supported.
Flashes every second ^{c)}	34-509 (PDW-U1) 34-909 (PDW-U2, PDW-U4) 34-A09 (PDW-U2, PDW-U4)	The cartridge type does not match the disc type inside.	The disc may not be supported. Eject the disc and check it.
	54-000 (PDW-U2, PDW-U4) 54-001 (PDW-U2, PDW-U4) 54-002 (PDW-U2, PDW-U4) 54-003 (PDW-U2, PDW-U4)	A disc of an unsupported format has been inserted.	Check whether the disc was created by XDCAM. If so, try ejecting the disc and reinserting it.

a) ERROR/ALARM indicator on the PDW-U1, PDW-U2, or PDW-U4.

b) For the PDW-U1, the indicator flashes until the disc is ejected. For the PDW-U2 or PDW-U4, the indicator flashes until the disc is reinserted after it is ejected.

c) The indicator flashes until the error is resolved.

Alarms during Operation

LED ^{a)}	Alarm code	Description	Possible solution
Flashes every second ^{b)}	53-500	Insufficient space in the management area of the disc.	Data cannot be recorded to this disc. Insert a different disc.
	54-200 (PDW-U2, PDW-U4) 54-201 (PDW-U2, PDW-U4)	An error was detected in the management area of a Write-Once disc ^{c)} .	Try ejecting the disc and reinserting it, or insert a different disc.
	61-000 (PDW-U2, PDW-U4)	Insufficient space in the management area of a Write-Once disc ^{c)} .	Data cannot be recorded to this disc. Insert a different disc.

a) ERROR/ALARM indicator on the PDW-U1, PDW-U2, or PDW-U4.

b) For the PDW-U1, the indicator flashes until the disc is ejected. For the PDW-U2 or PDW-U4, the indicator flashes until the error is resolved.

c) Quad-layer WO disc.

Alarms Relating to Sensors and Drives

LED ^{a)}	Alarm code	Description	Possible solution
Flashes four times per second ^{b)}	37-901 (PDW-U4)	The internal temperature of the XDCAM drive ^{f)} is abnormal.	If you continue to use the XDCAM drive ^{f)} in this state, the drive may overheat. This can result in damage to the unit or fire. Stop use immediately.
	37-A01 (PDW-U4)		
	37-B01 (PDW-U4)		
	37-C01 (PDW-U4)		
	95-50D (PDW-U2, PDW-U4) 95-51D (PDW-U4)		
Flashes every second ^{c)}	37-500 (PDW-U1)	The internal temperature of the XDCAM drive ^{g)} is rising.	(For the PDW-U1) If you continue to use the XDCAM drive ^{h)} in this state, the drive may overheat. This can result in damage to the unit or fire. Stop use immediately.
	95-50E (PDW-U2, PDW-U4)		(For the PDW-U2 or PDW-U4) Check that there nothing blocking the ventilation holes on the front and back of the XDCAM drive ^{f)} or otherwise obstructing the dissipation of heat.
	95-51E (PDW-U4)		
	37-900 (PDW-U2, PDW-U4)		
	37-A00 (PDW-U2, PDW-U4)		

LED ^{a)}	Alarm code	Description	Possible solution
Lit	3C-500 (PDW-U1)	Condensation has formed inside the XDCAM drive ^{h)} .	Do not insert a disc until the ERROR/ALARM indicator turns off.
Flashes four times per second ^{d)}	52-X0B (PDW-U1) 52-00B (PDW-U2, PDW-U4) 52-08B (PDW-U2, PDW-U4)	The specified address on the disc could not be read.	Try ejecting the disc and reinserting it, or insert a different disc.
Flashes every second ^{e)}	6F-E00 6F-E80 (PDW-U2, PDW-U4) 6F-F00 (PDW-U4) 6F-F80 (PDW-U4)	Recording is not possible due to failed adjustment processing after the disc was inserted.	If you want to record, try ejecting the disc and reinserting it, or insert a different disc.
Flashes four times per second ^{d)}	60-E65 (PDW-U4) 60-EE5 (PDW-U4) 60-F65 (PDW-U4) 60-FE5 (PDW-U4) 6F-E00 (PDW-U1) 6F-E03 (PDW-U2, PDW-U4) 6F-E83 (PDW-U2, PDW-U4) 6F-F03 (PDW-U4) 60-F83 (PDW-U4)	Recording and playback are not possible due to failed adjustment processing after the disc was inserted.	Try ejecting the disc and reinserting it, or insert a different disc.
Flashes four times per second ^{d)}	04-07C (PDW-U4) 04-17C (PDW-U4)	The optical block is stuck and cannot move.	Stop using the disc inserted in the device, and contact a service representative.
Flashes every second ^{b) d)}	55-000	An error was detected in the disc record signal.	An error was detected in the disc record signal. Back up the material.
Flashes four times per second ^{b)}	91-557 (PDW-U4) 91-597 (PDW-U4) 91-5A7 (PDW-U4) 91-5B7 (PDW-U4) 91-5C7 (PDW-U4) 91-695 (PDW-U4) 91-6A5 (PDW-U4) 91-6B5 (PDW-U4) 91-6C5 (PDW-U4)	Drive startup failed.	If the error occurred after updating the firmware, turn the unit off and on again, and update the firmware again.

a) ERROR/ALARM indicator on the PDW-U1, PDW-U2, or PDW-U4.

b) The indicator flashes until the PDW-U2 is turned off.

c) The indicator flashes until the error is resolved.

- d) For the PDW-U1, the indicator flashes until the disc is ejected. For the PDW-U2 or PDW-U4, the indicator flashes until the disc is reinserted after it is ejected.
- e) For the PDW-U1, the indicator flashes until the disc is ejected. For the PDW-U2 or PDW-U4, the indicator flashes until the error is resolved.
- f) PDW-U2
- g) PDW-U1, PDW-U2, or PDW-U4
- h) PDW-U1

Error Code Lists

See the following topics for lists of error codes that may appear during disc operations.

- Volume Recovery Error Codes
- Disc Format Error Codes
- Finalize Error Codes

Volume Recovery Error Codes

When XDCAM Drive Monitor is running, volume recovery is performed automatically. Since the automatic volume recovery is not performed when XDCAM Drive Monitor is not running, check the error code, and if necessary, recover the volume manually in Volume Recovery Screen.

Error code	Description	Possible solution
A2000001	Blank disc test failure	Disc access failed because the disc is damaged or disc management data was not written correctly. This software cannot recover this volume. ^{a)}
A2000003	Write failure	Disc access failed. Reinsert the disc.
A2000004	Read failure	
A2000005	Lock failure	Another program is using a file on the disc. Exit that program, and reinsert the disc.
A2000006 to A20000FF	Disc access failure	Disc access failed because the disc is damaged or disc management data was not written correctly. This software cannot recover this disc. ^{a)}
A2010001 to A2020604	Disc information acquisition failure	Failed to acquire information on the disc. Reinsert the disc.
A2100002	Blank disc	The disc is blank. Format the disc.
A2100003	Unsupported disc	This drive ^{b)} cannot accept this disc. Replace it with one that can be accepted. (For details on supported discs, refer to the operation manual of the PDW-U1, PDW-U2, or PDW-U4.)
A2100004	Unsupported drive	This drive is not an XDCAM drive ^{b)} . This software does not support this drive.
A2100005	No media	There is no disc inserted. Insert a disc.

Error code	Description	Possible solution
A2100008 to A210000A	Volume repair not allowed	<p>Recording is prohibited. Check the following, and reinsert the disc.</p> <ul style="list-style-type: none"> The disc can be handled by XDCAM drive ^{b)}. (For details, refer to the operation manual of the PDW-U1, PDW-U2, or PDW-U4.) The "Write Inhibit" tab on the disc is set to "Recording disabled." (For details, refer to the operation manual of the PDW-U1, PDW-U2, or PDW-U4.) The [Inhibit recording on the drive] checkbox is selected on the User Setting screen. (Perform "Applying Changes to the Settings" after clearing the checkbox.)
A210000B	Mount error	Reinsert the disc.
A210000E	Volume recovery failure	This software cannot recover this disc. ^{a)}
A2100020	Restricted (Full Disk Access permission)	The Full Disk Access permission has not been granted. Follow the steps in "How to set Full Disk Access" and reinsert the disc.
A2101001 to A2105001	Disc access failure	Disc access failed because the disc is damaged or disc management data was not written correctly. This software cannot recover this disc. ^{a)}
A2106001 to A2108101	Index mismatch error	Disc access failed because disc management data was not written correctly. This software cannot recover this disc. ^{a)}

a) If you wish to retrieve the information recorded on the disc, consult your Sony service representative. However, please note that retrieval of such information may not be possible depending on the recording status of the disc.

b) PDW-U1, PDW-U2, or PDW-U4

Disc Format Error Codes

Error code	Description	Possible solution
A1000001	Blank disc test failure	Disc access failed because the disc is damaged or disc management data was not written correctly. This software cannot format this disc. ^{a)}

Error code	Description	Possible solution
A1000002	Format failure	The drive is not ready to format the disc. Wait a moment before trying to format the disc again.
A1000003	Write failure	Disc access failed. Reinsert the disc, and try formatting it again.
A1000004	Read failure	
A1000005	Lock failure	Another program is using a file on the disc. Exit that program, and try formatting the disc again.
A1000006 to A10000FF	Disc access failure	Disc access failed because the disc is damaged or disc management data was not written correctly. This software cannot format this disc. ^{a)}
A1100003	Unsupported disc	This drive ^{b)} cannot accept this disc. Replace it with one that can be accepted. (For details on supported discs, refer to the operation manual of the PDW-U1, PDW-U2, or PDW-U4.)
A1100004	Unsupported drive	This drive is not an XDCAM drive ^{b)} . This software does not support this drive.
A1100005	No media	There is no disc inserted. Insert a disc.
A1100006	Format not allowed	Recording is prohibited. Check the following, and try formatting again. <ul style="list-style-type: none"> The disc can be handled by XDCAM drive ^{b)}. (For details, refer to the operation manual of the PDW-U1, PDW-U2, or PDW-U4.) The "Write Inhibit" tab on the disc is set to "Recording disabled." (For details, refer to the operation manual of the PDW-U1, PDW-U2, or PDW-U4.) The [Inhibit recording on the drive] checkbox is selected on the User Setting screen. (Perform "Applying Changes to the Settings" after clearing the checkbox.)
A110000B	Mount error	Reinsert the disc. If the disc has not been formatted, try formatting it again.

Error code	Description	Possible solution
A1100020	Restricted (Full Disk Access permission)	The Full Disk Access permission has not been granted. Follow the steps in “How to set Full Disk Access” and reinsert the disc.

a) If you wish to retrieve the information recorded on the disc, consult your Sony service representative. However, please note that retrieval of such information may not be possible depending on the recording status of the disc.

b) PDW-U1, PDW-U2, or PDW-U4

Finalize Error Codes

Error code	Description	Possible solution
A3000003	Write failure	Disc access failed. Reinsert the disc, and try finalizing it again.
A3000004	Read failure	
A3000005	Lock failure	Another program is using a file on the disc. Exit that program, and try finalizing the disc again.
A3000006 to A30000FF	Disc access failure	Disc access failed because the disc is damaged or disc management data was not written correctly. This software cannot finalize this disc. ^{a)}
A3100003	Unsupported disc	This drive ^{b)} cannot accept this disc. Replace it with one that can be accepted. (For details on supported discs, refer to the operation manual of the PDW-U1, PDW-U2, or PDW-U4.)
A3100004	Unsupported drive	This drive is not an XDCAM drive ^{b)} . This software does not support this drive.
A3100005	No media	There is no disc inserted. Insert a disc.

Error code	Description	Possible solution
A3100007	Finalize not allowed	Recording is prohibited. Check the following, and try finalizing again. <ul style="list-style-type: none"> The disc can be handled by XDCAM drive ^{b)}. (For details, refer to the operation manual of the PDW-U1, PDW-U2, or PDW-U4.) The "Write Inhibit" tab on the disc is set to "Recording disabled." (For details, refer to the operation manual of the PDW-U1, PDW-U2, or PDW-U4.) The [Inhibit recording on the drive] checkbox is selected on the User Setting screen. (Perform "Applying Changes to the Settings" after clearing the checkbox.)
A310000B	Mount error	Reinsert the disc. If the disc has not been finalized, try finalizing it again.
A310000C to A310001F	Disc access failure	Disc access failed because the disc is damaged or disc management data was not written correctly. This software cannot finalize this disc. ^{a)}
A3100020	Restricted (Full Disk Access permission)	The Full Disk Access permission has not been granted. Follow the steps in "How to set Full Disk Access" and reinsert the disc.
A310100C to A31015FF	Disc management data acquisition failure	Disc access failed because disc management data was not written correctly. This software cannot finalize this disc. ^{a)}

a) If you wish to retrieve the information recorded on the disc, consult your Sony service representative. However, please note that retrieval of such information may not be possible depending on the recording status of the disc.

b) PDW-U1, PDW-U2, or PDW-U4

Trademarks

- XDCAM, MPEG HD, MPEG IMX, XAVC, DVCAM, and the Professional Disc logo are trademarks of Sony Corporation.
- Intel and Intel Core are trademarks of Intel Corporation or its subsidiaries in the United States and/or other countries.
- Mac OS is a registered trademark of Apple, Inc. in the United States and/or other countries.