



WatchNET

ACCESS

A NEW FRONTIER IN ACCESS CONTROL SECURITY



I/O Controller



Universal Controller



Face Recognition



Biometric



Elevator Control



BLE Lock



Dual Tech Reader



Smart App



INTEGRATED SOLUTION
UNDER ONE
Global Brand

WatchNET Access Integrated Security Systems Software



WatchNET Access software is a powerful, network based enterprise level security management software that accommodates widely- dispersed applications with an unlimited number of users, controls thousands of doors and allows you to simultaneously access the system.

The enhanced user experience makes navigation and operation easy and intuitive. WatchNET Access Software platform that offers the ultimate balance between power and affordability in a network environment. It offers the flexibility to securely connect controllers directly on the network, as well as over RS-485.

WatchNET Access software is a fully integrated solution for Access Control, Intrusion Detection, CCTV, Time & Attendance and Building Management.

This powerful software manages multiple tasks using Windows 7 and Win 8 Professional Versions and supports databases such as MSSQL and MS Access.

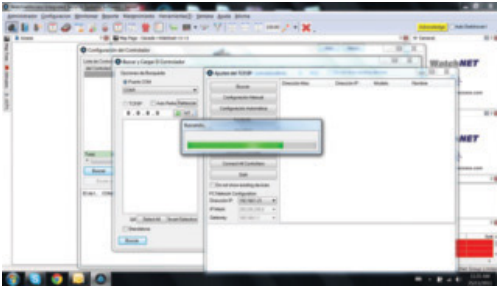
The software's multi database capabilities allow the customer the flexibility to choose either MS Access database or MS SQL database. Multiple users (software operators) with different levels of access can simultaneously access the system. The system starts with only a single user called "Administrator", and "Administrator" can create different users with different access levels enabling them with access to only to data as allowed by their access rights or privileges. The same software supports stand alone, small two-four doors installations, medium size installations and enterprise global systems. Just add more doors as you grow. Our licensing process is simple. There is a one-time cost based on hardware and functionalities needed. When you grow, simply add features to your license via eMail while adding, not replacing, existing equipment.

Software Overview

- Easy Icon based navigation
- Choice of colors & sounds for every event
- Auto Detection of Controllers on the network
- Auto or Manual Backup of the Database
- Exporting Events
- Searching / Add / Delete quickly
- Interactive dynamic maps
- NVR / IP Camera Video Integration
- Event Email Notification
- Pop up screens on specific events
- Unlimited Users and User Profiles
- SQL Database Standard
- Graphic Design – 4 layers of site-maps. Maps can be any Picture type, JPEG, BMP Files. Easy to use, just "Drag & Drop"
- Doors Operation from ANY client (based on permission.)

- Remote Access Support
- Email Alerts
- Flow Control – Logical Scenario response configuration using any of over 120 systems events as well as Input or Output statuses
- Time and Attendance Built-In
- Visitor Management
- Event Response Configuration
- Alarms and Alert functionality allow the use of auxiliary inputs and outputs to be configured as Alarm point and alerts. Supports most alarm sensors in the market
- Muster / Evacuation Support
- Lockdown and Active Shooter Scenario Supported
- iOS and Android apps (WatchNET Access) available for remote control of doors
- Software in multiple languages

Scan and Enroll Controllers on the Network



The system set up is made relatively very easy with WatchNET software. Once all the hardware is wired and plugged in to the network, the software scans the network for all installed controllers and lists them using the search function. Auto or Manual configuration is possible on all the controllers detected online.

The operator has the choice to determine whether an Auto download or Manual download to the controllers is needed from the selectable feature of the software. WatchNET Access panels can be connected either through a COM port or through TCP/IP. In case the controllers are interconnected through the RS485 Bus to the COM port of the server then search could be done on the com port as well. However the controller dip switches need to be correctly set before the scan.

Software Event Monitoring

The pop up function ensures that in the event of an alarm the appropriate map pops up. The alarm can be acknowledged using the acknowledge button on the top and action taken can be recorded. The system also provides real time status display and control of all the devices on the map.

The system enables the operator to monitor entry of personnel on site in real time. The person's database picture along with his credentials is displayed. The latest entry is shown as a large picture while the previous three is delegated to smaller screens on the side. This feature facilitates video verification through camera pictures as well. The system also enables specific events to pop up boxes from different areas of the screen.



With this the operator is easily available to identify whether the entry is a regular entry which pops up from the right hand side bottom of the screen or an alert which can popup from the left hand side top corner of the screen. These features reduce stress on the operator as they don't have to stay focused on the screen all the time monitoring the events. The colour of events as it appears on the screen can also be configured making it specific to different organizations.

Distinctive System Features

- Active Directory Integration
- Interactive Guard Tour
- Integrated & Independent Elevator Control
- Integrated & Independent I/O Monitoring
- Web & Mobile Interface

WatchNET Access Integrated Security Systems Software

Additional Modules of WatchNET Access Software

WatchNET Access Control software is a powerful application that allows a combination of systems Electronic security in the organization to a central management system.

The software allows control Full of all security components in the organization, diverse automated responses, easy time control True, and advanced customization.

The software offers a comprehensive solution for the security needs of Organizations of all sizes, enable the implementation and assimilation of unique features according to needs The customer, and shows high flexibility while maintaining high performance and maximum stability.

External Modules

WatchNET Access Control Software supports the addition of unique external modules, which allow the solution to be expanded offered to the customer, without the need to install additional software, and provides all the tools needed by the customer. In one centralized interface.

- Microsoft® Active Directory (AD) Integration Module.
- Multi-Server (Client Software License).
- Module Badge design and printing module.
- Time Attendance Module.
- Guard Tour Module.
- BACnet Module for BMS Integration
- Visitor Management Module.
- Hotel Lock Client Module.
- Elevator module.
- CCTV integration Module.
- Intrusion Alarm System Integration Module
- VingCard Integration Module

Microsoft® Active Directory (AD)

WAS-AF-AD Module:

WatchNET Access Control uses the inherent capabilities of Microsoft® Active Directory (AD) to provide integrated solutions.

WatchNET Access Control bidirectional Microsoft Active Directory Cardholder Sync enables Active Directory user records to be replicated through to WatchNET Access Control Software cardholder records.

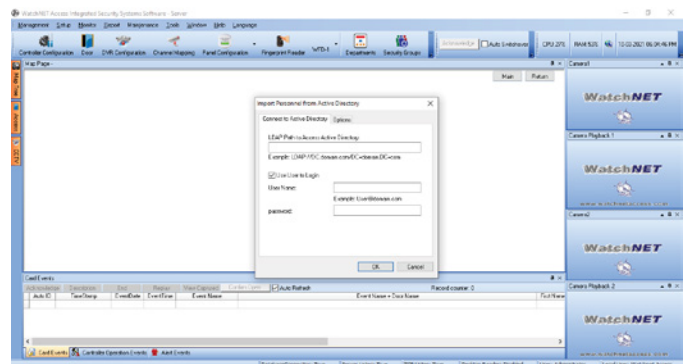
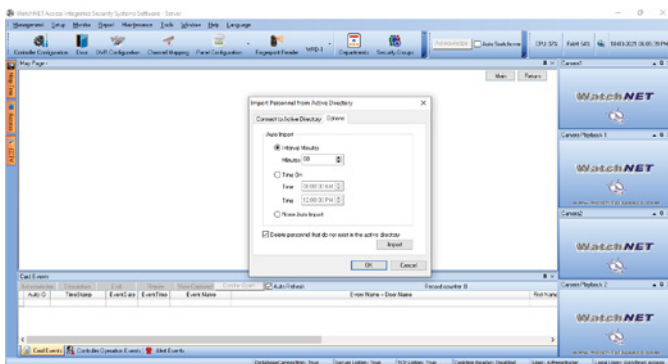
Have your IT Directory and physical security systems working in perfect harmony. Microsoft Active Directory integration facilitates the centralized management and synchronization of Windows user accounts.

Microsoft Active Directory integration facilitates the centralized management and synchronization of Windows user accounts with Security Center's administrator and cardholder accounts. Adding Windows users in Active Directory will automatically create Security Center users and/or cardholders. Synchronization is automated so the overall process is efficient and eliminates typical manual intervention and errors in the process. With Active Directory integration to Security Center, you save valuable time by configuring the link only once.

Cardholder Sync allows for cardholder permissions and information to be transferred from Active Directory through to WatchNET Access Control Software. Eliminating duplication of data entry, minimizing the possibility of data errors and ensuring fast and efficient management of staff.

Key Advantage of Active Directory Integration

- WatchNET access to your security software and physical facilities is up to date
- Promotes cooperation, sharing of data, and consistency throughout your organization
- Streamlines user management, taking human error out of the equation
- Simplifies cardholder management, allowing your team to be more productive
- Automated synchronization eliminates burdensome paperwork and emails for managing employee access
- Security groups are visible within Security Center leading to quick selection of groups



Multi-Server (Client Software)

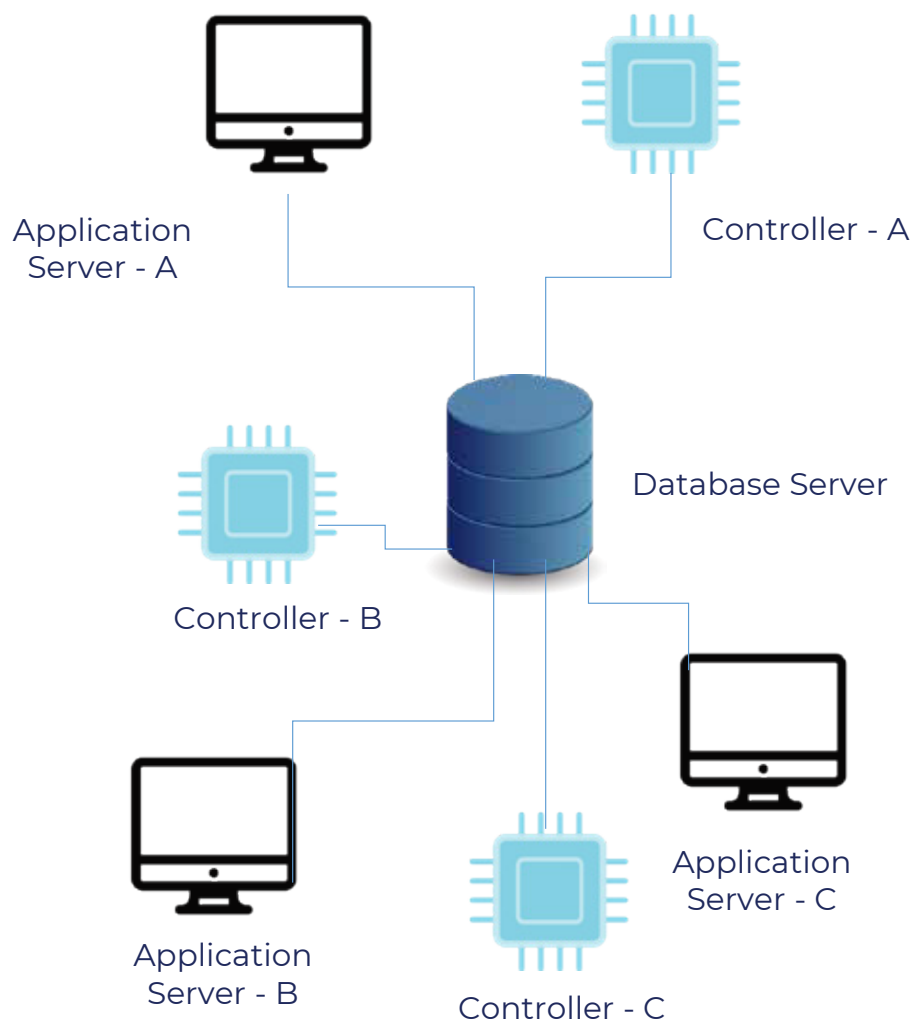
WAS-PRO-CL1 Module:

The Client licensed feature of WatchNET Access control Software improves its ability to operate effectively in a distributed environment. This distributed environment may include multiple sites separated by large geographical distances and connected via low bandwidth and/or intermittently available networks.

Improved operational efficiency

Multi-Server allows organizations to link the management capabilities of multiple sites, improving operational efficiency and decreasing operational vulnerability.

- Can gain access with a single card to as many of the sites on a Multi-Server network as is required.
- Should one site need to be evacuated another site can take on the responsibility of monitoring and managing the site.
- Servers on a Multi-Server network can be aggregated to share information, allowing them to track current location status of cardholders.
- Multi-Server mitigates the dependency on a wide area network (WAN) for evacuation reporting and site monitoring.



Module Badge Design & Printing Module

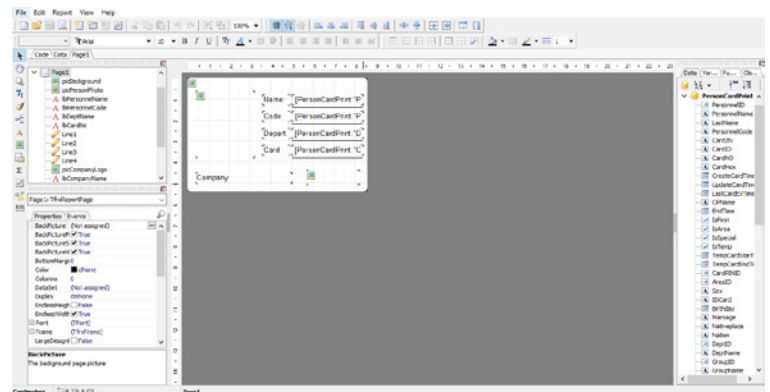
WAS-AF-CP Module:

Badge printing is an optional licensed feature available with WatchNET Software, providing the ability to design and produce encoded and/or photo identification cards for cardholders.

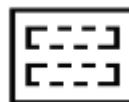
An extensive range of options are available for formatting card layouts, including creating backgrounds, importing images and logos, adding and formatting text, incorporating barcodes, QR code and personalized cardholder data.

Features and benefits

- User friendly interface
- Options such as 'snap-to-grid' allow users to position objects exactly where required on the card
- Once the first layout has been completed, it can be copied to create subsequent layouts within the same system
- One centralized source of cardholder information



**Easily Design, Print & Assign
Badges or Name Tags**



**Completely configurable,
Template-based WYSIWYG designer**



Drag and drop functionality



**Create your own designs;
import; or use one of the
built-in templates**



**Supports any
Windows printer**

When operator issues a card for an employee, he can print his card immediately through any professional card printer. Operator can choose a template for each people or department.

Interactive Map

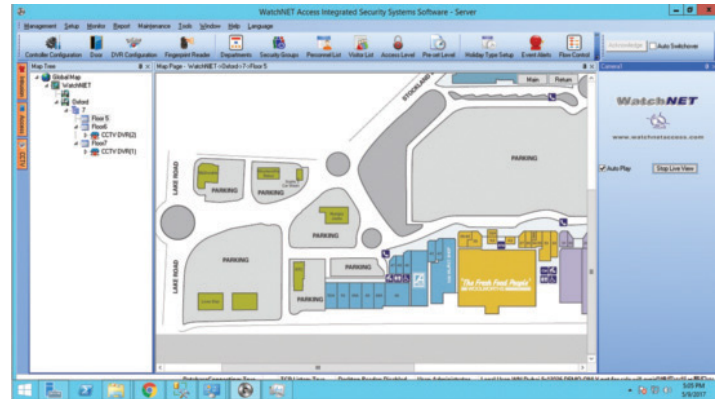


WatchNET Access provides a comprehensive graphical monitoring and control. Map Maker allows having four layers of visual maps of the different sites, buildings, floors and areas.

User can view all controller components and monitor their real time status (locks, sensors, exit buttons, inputs, and outputs).

Users can also change the status of the components by right clicking on the particular component and choosing the options available. All maps and controller components displayed are dynamic.

The components will change their graphical icon if their physical status has changed (i.e. lock was opened).



eMap

Features and benefits

WatchNET Access Control Software includes an advanced system of synoptic maps, which enables the establishment of facility maps detailed that includes all the hardware components in the facility, and allows full control of the condition of the components directly from the map. The system provides the customer with a powerful tool for control and monitoring of the facility, intuitively and simple.



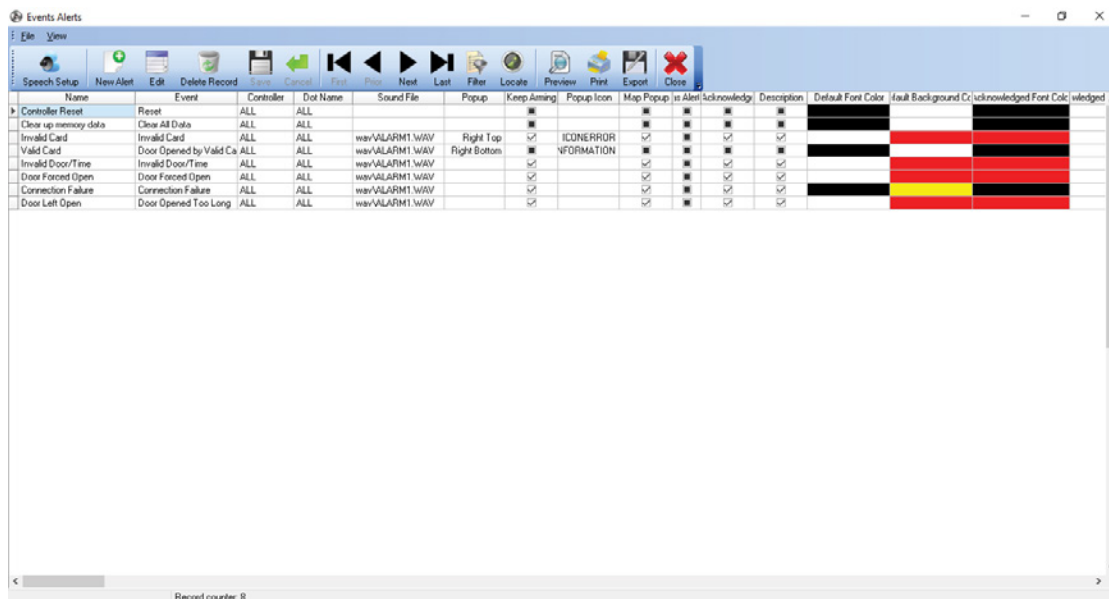
Advanced Event Management System

WatchNET Access Control Software includes an advanced event management system, which includes a wide range of tools and capabilities Advanced, and allows customization to customer needs.

The system includes over 300 types of events Different, and allows the creation of automatic and manual conditionings for each hardware component or event type separately.

Features and benefits

- Alerts for proper / improper use of proximity tags and fingerprints
- Hardware event alerts, including burglary detection and disturbed door
- Identify communication problems for controllers, cameras and alarms
- Receipt of fault indications from all connected systems
- Real-time event management system, including a unique colour and sound association for each event
- Send email, network packages and export files automatically
- Unlimited event storage
- Advanced reporting system and easy to operate



Intrusion Alarm System Integration Module

WAS-INT-IAP Module:

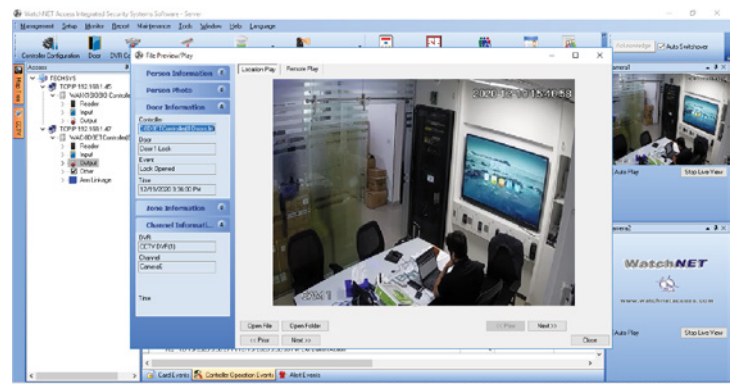
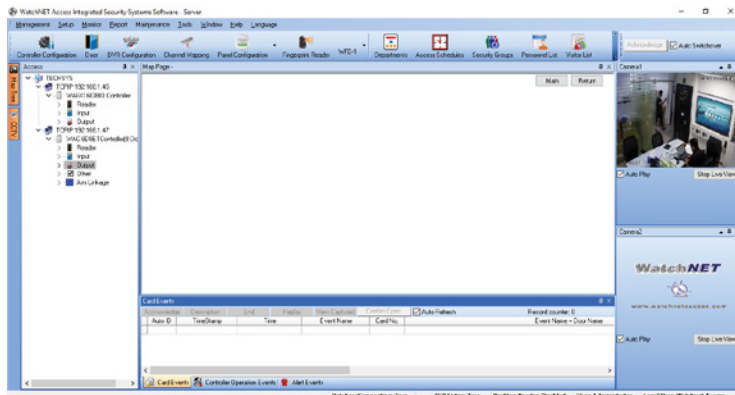
WatchNET Access Control Software supports the connection of common control systems on the market and allows full control In systems and receiving real-time indications, integrating are case of alarm.as in synoptic maps, and bouncing alerts Custom in

Features and benefits

- Receive the status of the areas in real time
- Stepping and releasing sections at the touch of a button
- Bypass / activation of areas Activating relays
- Full fault indication
- Combining areas on synoptic maps, and changing area status at the touch of a button
- Create custom system alerts and responses during an alarm
- Full connection without creating a dependency of the alarm system on the system

Supported Systems :

ProSYS 16, ProSYS 40, ProSYS 128, ProSYS Plus, ProSYS LightSYS, PIMA Hunter-Pro 32, PIMA Hunter-Pro 96, PIMA Hunter-Pro 144, DSC PowerSeries PC1616, DSC PowerSeries PC1832, DSC PowerSeries PC1864



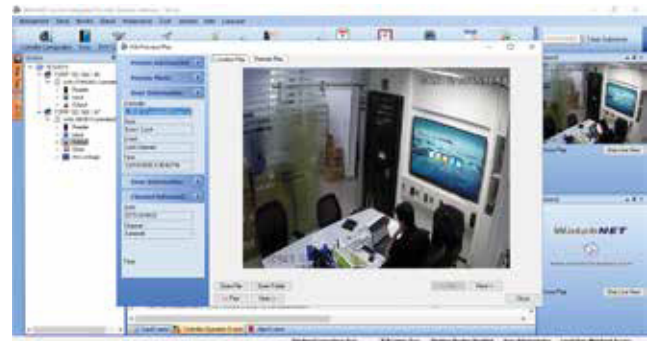
CCTV Integration Module

WAS-INT-WIP Module:

WatchNET Access Control Software supports the connection of the most common CCTV systems on the market, and enables timely video capture true, video bouncing during an event, combining cameras in synoptic maps, and backing up recordings Directly from the software.

Features and benefits

- Create custom video bounces by doors, alarm areas and other hardware components
- Perform image capture and short recordings automatically during an event
- Real-time video streaming directly from the software
- Combining cameras on synoptic maps, and viewing video at the touch of a button
- Restore recordings of events in the system directly from the software
- Receive an indication in case of loss of communication with a camera or recording component



Video Integration

The WatchNET Access software is seamlessly integrated with CCTV system through DVR/NVR and IP Cameras. Currently it is integrated with all WatchNET video products and a few other supported brands. Integration can also be developed as per clients requirements provided the requirements needed for integration is provided to us. Integration is achieved by TCP/IP communication with the required video platforms.



As is the case with controllers, the software scans the network and identifies the DVRs. NVRs or IP Cameras. Once identified the cameras in the system can be located on the maps. The live image from the cameras can be seen on the video monitor slots on the screen by clicking on the appropriate cameras. The system also automatically brings up the appropriate cameras if they are tagged to doors upon events. Snapshots or Video clips can be recorded on specific events. These events are saved on the server and can be recalled at any time through the event viewer or reports from the system.

BACnet Interface Module for BMS Integration

WatchNET BACnet Interface module provide the data on BACnet/IP

WAS-BMS-INT Module:

BACnet interface provides a simple and efficient way to integrate WatchNET Controllers with third party building management systems. BACnet is a communications protocol for Building Automation and Control Networks.

- Combining security and building management gives an additional layer of information and operational capabilities
- WatchNET Access enables integration with selected third party building management systems to provide a complete alarm and access management solution
- Monitoring point's (Controller Online and Offline status, Door Status, AUX input and output status etc...
 - Seamless integration to BACnet systems over TCP/IP (BACnet IP)
 - Windows style GUI for ease of configuration and data entry
 - Map ACS Devices and Inputs to BACnet Objects
 - Define how Access Control Alarms utilise BACnet Objects
 - Operational/Non Operational alarms
 - Duress and Tamper Alarms

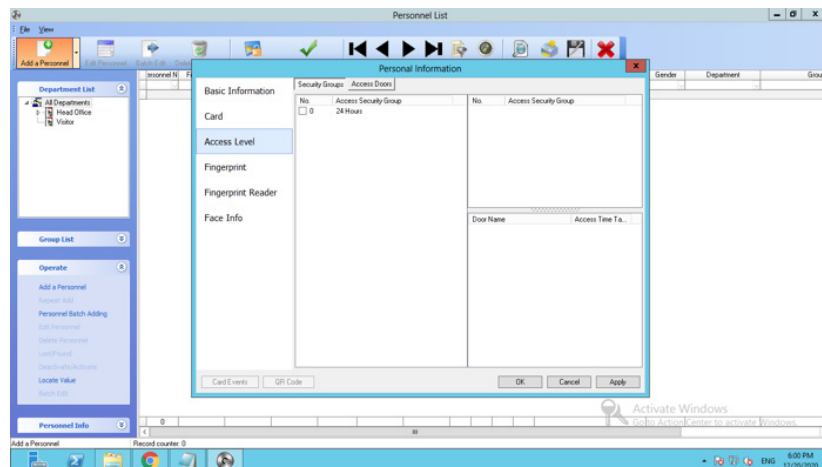


WAS-BMS-INT Module:

- Establish an unlimited number of maps
- Build map trees and hierarchies easily, up to 4 layers
- Adjust the size, shape and angle of the components on the map
- Smart icons that change depending on the state of the element
- Automatic map bounce during an event, including marking the relevant element.
- Option to add custom icons and buttons

Biometric Reader Integration

The WatchNET Access software is seamlessly integrated with Biometric readers making enrollment of the card holders and their fingerprints from a single screen. Currently it is integrated with the WatchNET Bio- metric readers as well as a few well-known brands in the industry. Integration can also be developed as per client's requirements provided the requirements needed for integration is provided to us. Initially each reader is connected to the software through a USB cable to set its device parameters for TCP/IP communication. Once this is done all biometric readers are plugged into the network and as is the case with controllers, the software scans the network and identifies the units. The fingerprint is enrolled at the same time a card is issued using the USB fingerprint enrollment unit. The fingerprint template is then downloaded to all the fingerprint units through TCP/IP. All the biometric readers will be listed in the card enrollment screen and access can be allowed on all or specific readers depending on the access level of the card holder.



Guard Tour Module



WAS-AF-SGT Module:

Patrol Online Module is a real time application for Guard Patrol, which support multi-time flash cards within one day; a leave of absence, work overtime, holiday works overtime, on business, card adjustment function; support shifting, cross day work time, multi-shifting; exportation variety of statements / reports, providing a rich condition combination search function. To facilitate real-time patrol status, particularly suitable for prison house, public security organs, high-grade community, high security areas.

Features and benefits

- Two kinds of databases: MS_SQL or MS_Access
- Multiple operator rights levels management, director can only operate attendance data within their own department
- Data Backup, Working sheet can be Exported as Excel / TXT format file
- Powerful team / group setting function, operation more convenient
- Powerful team / group setting function, operation more convenient
- Reflect real time patrol status
- Flexible setting of guard patrol points, routes and schedules
- Can establish patrol schedule, and realize the schedule circulation function
- Various colour cue function, different colour display mean different event types
- Powerful reporting capabilities can generate all kinds of reports, which could exported by time, individuals, departments, shifting and other information

Advantage of powerful WatchNET Access Software

1	Server Client Architecture
2	Web Server Application for multi-location projects
3	Powerful software manages multiple tasks using Windows 7 and Win 8 Professional Versions
4	Supports databases such as MSSQL and MS Access
5	Windows Active Directory integration
6	Easy Icon based navigation
7	Time Attendance System module
8	Visitor Management module
9	Choice of colors & sounds for every event
10	Auto Detection of Controllers on the network
11	Auto or Manual Backup of the Database Exporting Events
12	Searching / Add / Delete quickly
13	Interactive dynamic maps
14	NVR / IP Camera Video Integration
15	Event Email Notification
16	Popup screens on Specific events
17	Highly secure encryption algorithm
18	Fully integrated Fingerprint registration process
19	Client Meeting Management module

20	Badge printing module
21	Mobile App
22	Interactive Guard Tour
23	Independent I/O (input / output) Monitoring Web and Mobile Interface
24	SDK / API shall be provided for 3rd party integration
25	eMap with configurable camera positions
26	Server Client Architecture
27	Event notification email, SMS and Alarm center
28	Live View verification
29	Dual-card verification (Identity Specific)
30	Local and Global anti-passback
31	Local and Global event alerts
32	Parking control IN/OUT Management
33	IN/ OUT person counting with name display (Displays who is in the building and who is out)
34	VLAN and small packet transmission
35	Controllers available in 2,4,8 door configurations
36	Editable Weigand format for custom configurations
37	Video and Alarm integration
38	Live view POPUP for DVR up to 32 ch

Additional features can be added at any time by License Upgrade

Biometric Integration

- Biometric Integration – allows the use of Biometric readers in addition to card readers
- The Biometric database is managed from the software without the need to use 3rd party software
- Enrollment done as part of adding or editing use

CCTV Integration

- CCTV Integration provides full integration with WatchNET CCTV systems
- Live view by “clicking” the camera icon
- CCTV Screen supports dual screen for simultaneous Access Control and CCTV monitoring
- Event Recording can be configured as response to any of the Input – Output events.
- The Software download the Video Clip or Still Pictures as configured
- Video Clips and Pictures are stored in separate folders ensuring sustainable records regardless of DVR or camera Memory section
- Most CCTV equipment supports remote view and smart-phone access

ALARM Integration

- Full integration of Alarm systems

All logos & trade marks represent the registered users only. All rights reserved.
All product *specifications* on this brochure are subject to change without *notice*.

Software 3rd party Integration:

- BMS integration through BacNET for the door status
- Vingcard GRMS integration
- Assa Abloy Aperio locks integration
- TBS biometric integration
- Bluetooth electronics locks integration

CANADA:

351 Ferrier Street, Unit 5
Markham, Ontario
L3R 5Z2, Canada
Tel: 416-410-6865
Toll Free: 1-866-843-6865

USA:

171 Cooper Avenue, Site 110
Tonawanda, Newyork,
14150 USA
Local: 1-716-877-7277
Toll Free: 1-866-843-6865

MIDDLE EAST:

P O Box No 126312
Office Suite 703
Oxford Tower, Business Bay
Dubai, UAE
Tel: + 971 4 2767117

Revised April 15, 2021

info@watchnetaccess.com
www.watchnetaccess.com