

# aSeries

Compact • Full-Function • Multifunction Displays



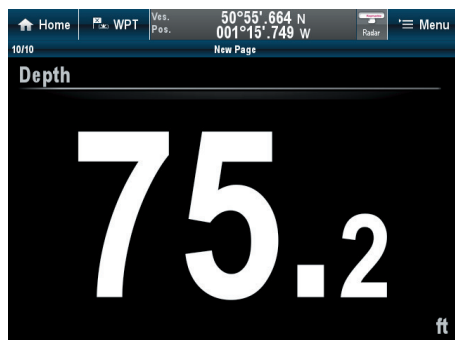
INNOVATION • QUALITY • TRUST

# Raymarine®

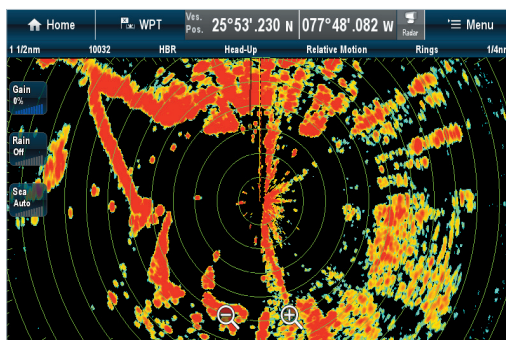
# aSeries: Big Specifications Compact Dimensions



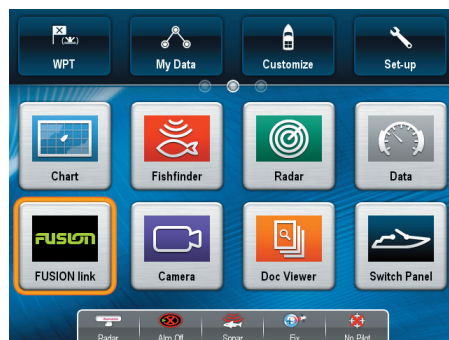
Single data screen



Full screen radar (optional radar antenna required)



Application selection (home screen)



# aSeries Multifunction Displays

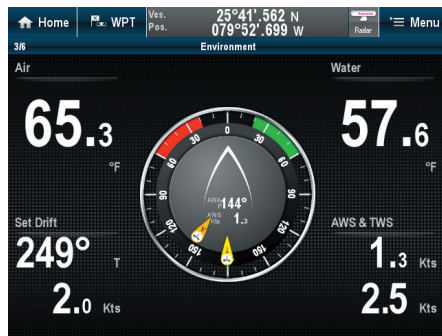
Powerful, go-anywhere, navigation; **aSeries** multifunction displays deliver the speed and simplicity of Raymarine technology in a sleek compact touch screen displays.

- Swipe, Touch and Navigate – very simple. Powered by Raymarine’s intuitive LightHouse user interface
- Super Bright LED Technology – sunlight viewable optically-bonded display
- Super-fast dual core processor plus a powerful graphics processor

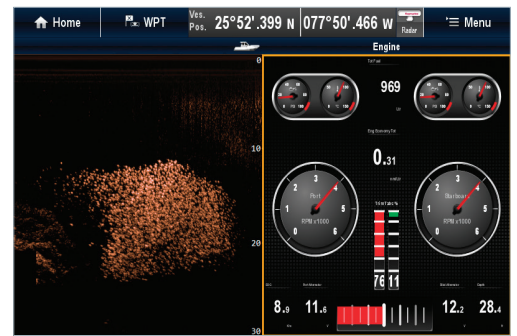


## Personalize

Create custom navigation pages by dragging and dropping applications to the desired location on the page. The LightHouse user interface also guides you through setup and configuration with an easy to use start up wizard. Make sure you are up to date with latest features available from [www.raymarine.com](http://www.raymarine.com)



a6 Series typical environment screen

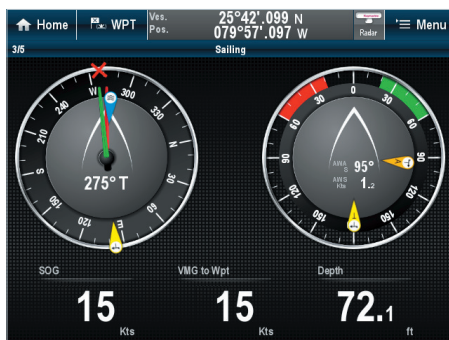


a7 Series typical split screen showing DownVision and engines



The LightHouse user interface is updated regularly to bring you the very latest features. Make sure you are up-to-date by downloading the latest version from our website.

Dual compass wind screen



## aSeries: multifunction displays

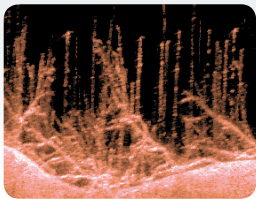
### Sonar

- **aSeries** with sonar built-in are the perfect choice for anglers looking for a powerful do-it all combo
- a68 and a78 feature Raymarine's exclusive CHIRP DownVision for photo realistic images of structure and fish targets
- a67 and a77 feature a fully automatic digital sonar, ideal for coastal fishing and the occasional offshore venture

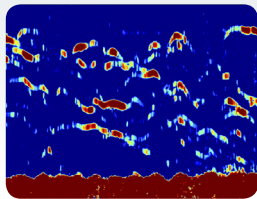




a68/a78 CHIRP DownVision



a67/a77 Digital Sonar

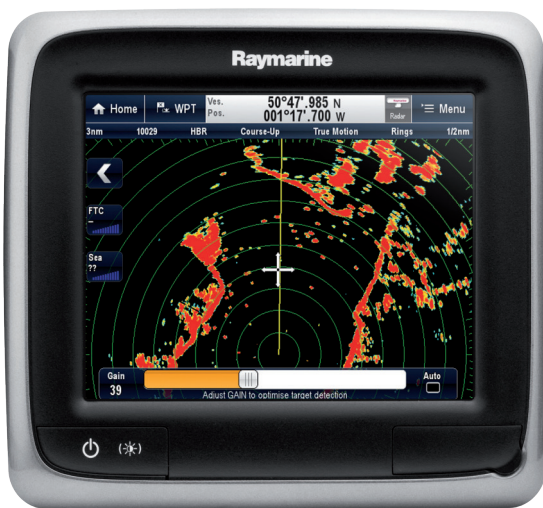


## Sonar continued...

- The a67 and a77 are trolling motor ready – optional adapter enables use of Minn Kota’s Universal Sonar trolling motor transducer (83kHz).

## Radar

Display radar data with an optional Raymarine Digital, HD and Super HD Color radar antenna.



## Optional Wi-Fi and Mobile Apps

Choose an aSeries MFD with built in Wi-Fi and use your mobile device to view and remotely control your MFD with our mobile apps. For more information and model compatibility, visit [www.raymarine.com](http://www.raymarine.com)



## Charting

- 50 Channel internal GPS sensor
- Charts: aSeries MFDs are available with or without Navionics Silver or Gold cartography on microSD cards
- 3D Chart and aerial photo chart navigation using optional Navionics Platinum+ charts
- Easy to use; with a simple start up wizard and on-screen user guide
- Place waypoints and plan routes with a few simple touches

**256**  
COLOUR HD+SHD

# aSeries: it's extremely well connected

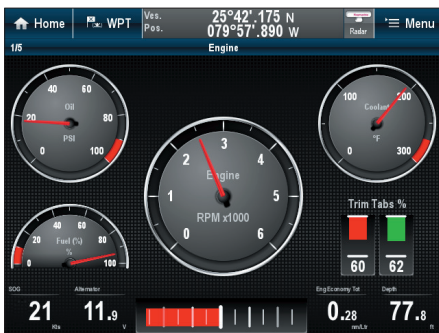


## Instrument Displays

Sharp, easy-to-read analog and digital instrument display transform aSeries into a powerful information display.

## Networking

- Fast RayNet Ethernet (SeaTalk<sup>hs</sup> compatible) port
- Network up to 6 Raymarine MFDs
- Network support for Raymarine Digital radar, HD Color and SHD Color radar, ClearPulse<sup>®</sup> CHIRP sonar modules
- NMEA2000 and SeaTalk<sup>ng</sup> connectivity



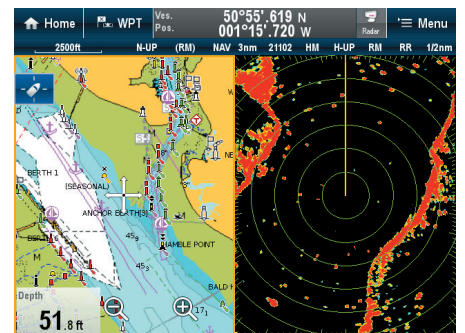
## Engines Display

Connect with NMEA2000 compatible engines for graphical engine data displays.



## Fuel Management

Fuel monitoring with time-to-empty and distance to empty calculations and fuel range rings display overlaid on navigation charts.



## Custom Screens

Display multiple screens at the same time, such as chart and radar information.



## Audio Control

Control your audio with Bluetooth or FUSION link. Full control of FUSION 700 Series Marine Stereos.





## IP Cameras

aSeries MFDs support IP cameras (requires ONVIF compatibility) including record and playback facilities.



Features	a65	a67	a68	a75	a77	a78
Screen size	5.7 inch			7 inch		
Built-in digital sonar		•			•	
Built-in CHIRP with DownVision sonar			•			•
Wi-Fi	Optional					
Bluetooth	Yes					
Chartplotter	Yes					
Radar Display	Optional radar antenna required					
Ideal network display	•			•		
Recommended for coastal fishing		•	•		•	•
Recommended for freshwater or coastal fishing			•			•

## Accessories

1. Upgrade aSeries displays with a network sonar module
2. AIS350/AIS650 Automatic Identification System (AIS) modules
3. Digital, HD or SHD Color radar antennas
4. Enjoy basic autopilot control of Raymarine Evolution autopilots
5. Optional Wireless Control. The RCU-3 wireless remote offers simple 3 button control of the MFD using Bluetooth. Wheelmount or lanyard (supplied)

## SPECIFICATIONS

### Nominal voltage supply:

a6X: 13.8 v DC  
a7X: 12 v DC

### Operating voltage range:

a6X: 10.2 – 15.6 v DC  
a7X: 10.8 – 15.6 v DC

### Power consumption at full brightness:

a65/a67/a65 Wi-Fi/a67 Wif-Fi: 9/12W  
a68/a68 Wi-Fi: 10.6W max  
a75/a75 Wi-Fi: 9.1W max  
a77/a77 Wi-Fi: 12.7W max  
a78/a78 Wi-Fi: 11.1W max

### Operating Temperature range:

a6X: -10°C to +50°C (13°F to 122°F)  
a7X: -25°C to +50°C (14°F to 122°F)

### Waterproofing standard:

IPX6 and IPX7

### Display size:

a6X: 5.7"  
a7X: 7"

### Display resolution:

a6X Series – 640 x 480 pixels (4:3 format)  
a7X Series – 800 x 480 pixels (16:9 format)

### Color depth:

24 bit

### Networking:

Up to 6 units

### Connections:

1 × RayNet (SeaTalk<sup>hs</sup>); 1 × SeaTalk<sup>ng</sup>

### Bluetooth:

AVRCP 2.1+ EDR power class 1.5

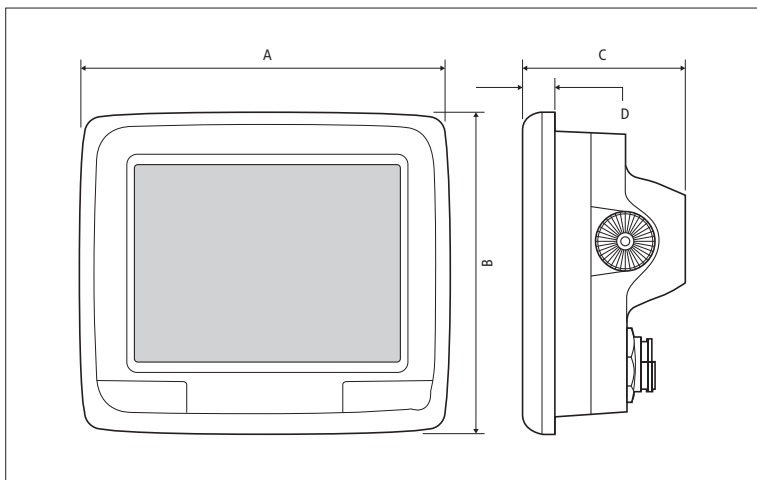
### Wi-Fi:

Optional built-in Wi-Fi. 802.11 b / g

### Cartography:

aSeries displays can be purchased with or without Navionics charts on microSD cards. Choose models with Navionics Silver or Navionics Gold included. Also support for optional Navionics Platinum charts.

Specifications subject to change without prior notice.



	A		B		C		D	
a6 Series	6.45"	164mm	5.66"	144mm	2.79"	71mm	0.57"	14.5mm
a7 Series	8.07"	205mm	5.78"	147mm	2.89"	73.6mm	0.57"	14.5mm

### Safety Notice

Raymarine products are intended to be used as aids to navigation and must never be used in preference to sound navigational judgement. Their accuracy can be affected by many factors, including environmental conditions, equipment failure or defects, and incorrect installation, handling or use. Only official government charts and notices to mariners contain all the current information needed for safe navigation, and the captain is responsible for their prudent use. It is the user's responsibility to use official government charts, notices to mariners, caution and proper navigational skill when operating any Raymarine product.

### Content Note

The technical and graphical information contained in this brochure, to the best of our knowledge, was correct as it went to press. However, the Raymarine policy of continuous improvement and updating may change product specifications without prior notice. Therefore, unavoidable differences between the product and this brochure may occur from time to time, for which liability cannot be accepted by Raymarine.

### Specifications

All specifications are subject to change without prior notice. Visit [www.raymarine.com](http://www.raymarine.com) for the most up-to-date specifications. Some images are for illustration purposes only.

### Trademarks

For a list of trademarks, please refer to our website [www.raymarine.com](http://www.raymarine.com).

**Note:** Equipment described herein may require US Government authorisation for export purposes. Diversion contrary to US law is prohibited.



## FREE WARRANTY UPGRADE FROM 2 YEARS TO 3 YEARS

Raymarine offers a 2 year Limited Warranty (upgradable to 3 years upon product registration) on products installed in vessel use classifications within this brochure, full details of the Global Warranty Policy and how to register your products can be found at [www.raymarine.com/warranty](http://www.raymarine.com/warranty). If you require local assistance, please contact a Raymarine certified dealer near you, details of which can be found at [www.raymarine.com/dealerlocator](http://www.raymarine.com/dealerlocator).

<b>Raymarine UK Limited</b> T: (+44) (0)1329 246 700	<b>Raymarine Asia Pty Ltd</b> T: (+61) (0)2 9479 4800	<b>Raymarine Inc.</b> T: (+1) 603 324 7900
<b>Raymarine France</b> T: (+33) (0) 146497230	<b>Raymarine Finland Oy</b> T: (+358) (0) 207619937	<b>Raymarine Italy</b> T: (+39) (0)2 99451001
<b>Raymarine Belgium (Order Processing)</b> T: (+32) 765 79 41 74	<b>Raymarine Denmark</b> T: (+45) 4371 6464	<b>Raymarine Germany GmbH</b> T: (+49) (0) 40 237 8080
<b>Raymarine BeNeLux</b> T: (+31) (0) 26 361 4242	<b>Raymarine Norway</b> T: (+47) 69 264 600	<b>Raymarine Sweden AB</b> T: (+46) 317 633670

UK LIT70119



[www.raymarine.com](http://www.raymarine.com)

**Raymarine**<sup>®</sup>  
A FLIR COMPANY