

Keysight E5061B Network Analyzer

Notices

© Keysight Technologies
2010–2017

No part of this manual may be reproduced in any form or by any means (including electronic storage and retrieval or translation into a foreign language) without prior agreement and written consent from Keysight Technologies, Inc. as governed by United States and international copyright laws.

Trademark Acknowledgments

Manual Part Number

E5061–90027

Edition

Edition 1, December 2017

Printed in Malaysia

Published by:

Keysight Technologies International
Japan G.K,
1-3-3 Higashikawasaki-cho
Chuo-ku
Kobe-shi, Hyogo, Japan

Warranty

THE MATERIAL CONTAINED IN THIS DOCUMENT IS PROVIDED “AS IS,” AND IS SUBJECT TO BEING CHANGED, WITHOUT NOTICE, IN FUTURE EDITIONS. FURTHER, TO THE MAXIMUM EXTENT PERMITTED BY APPLICABLE LAW, KEYSIGHT DISCLAIMS ALL WARRANTIES, EITHER EXPRESS OR IMPLIED WITH REGARD TO THIS MANUAL AND ANY INFORMATION CONTAINED HEREIN, INCLUDING BUT NOT LIMITED TO THE IMPLIED WARRANTIES OF MERCHANTABILITY AND FITNESS FOR A PARTICULAR PURPOSE. KEYSIGHT SHALL NOT BE LIABLE FOR ERRORS OR FOR INCIDENTAL OR CONSEQUENTIAL DAMAGES IN CONNECTION WITH THE FURNISHING, USE, OR PERFORMANCE OF THIS DOCUMENT OR ANY INFORMATION CONTAINED HEREIN. SHOULD KEYSIGHT AND THE USER HAVE A SEPARATE WRITTEN AGREEMENT WITH WARRANTY TERMS

COVERING THE MATERIAL IN THIS DOCUMENT THAT CONFLICT WITH THESE TERMS, THE WARRANTY TERMS IN THE SEPARATE AGREEMENT WILL CONTROL.

Technology Licenses

The hardware and/or software described in this document are furnished under a license and may be used or copied only in accordance with the terms of such license.

Declaration of Conformity

Declarations of Conformity for this product and for other Keysight products may be downloaded from the Web. Go to <http://www.keysight.com/go/conformity>. You can then search by product number to find the latest Declaration of Conformity.

U.S. Government Rights

The Software is “commercial computer software,” as defined by Federal Acquisition Regulation (“FAR”) 2.101. Pursuant to FAR 12.212 and 27.405-3 and Department of Defense FAR Supplement (“DFARS”) 227.7202, the U.S. government acquires commercial computer software under the same terms by which the software is customarily provided to the public. Accordingly, Keysight provides the Software to U.S. government customers under its standard commercial license, which is embodied in its End User License Agreement (EULA), a copy of which can be found at

<http://www.keysight.com/find/sweula> The license set forth in the EULA represents the exclusive authority by which the U.S. government may use, modify, distribute, or disclose the Software. The EULA and the license set forth therein, does not require or permit, among other things, that Keysight: (1) Furnish technical information related to commercial computer software or commercial computer software documentation that is not customarily provided to the public; or (2) Relinquish to, or otherwise provide, the government rights in excess of these rights customarily provided to the public to use, modify, reproduce, release,

perform, display, or disclose commercial computer software or commercial computer software documentation. No additional government requirements beyond those set forth in the EULA shall apply, except to the extent that those terms, rights, or licenses are explicitly required from all providers of commercial computer software pursuant to the FAR and the DFARS and are set forth specifically in writing elsewhere in the EULA. Keysight shall be under no obligation to update, revise or otherwise modify the Software. With respect to any technical data as defined by FAR 2.101, pursuant to FAR 12.211 and 27.404.2 and DFARS 227.7102, the U.S. government acquires no greater than Limited Rights as defined in FAR 27.401 or DFARS 227.7103-5 (c), as applicable in any technical data.

Safety Notices

CAUTION

A **CAUTION** notice denotes a hazard. It calls attention to an operating procedure, practice, or the like that, if not correctly performed or adhered to, could result in damage to the product or loss of important data. Do not proceed beyond a CAUTION notice until the indicated conditions are fully understood and met.

WARNING

A **WARNING** notice denotes a hazard. It calls attention to an operating procedure, practice, or the like that, if not correctly performed or adhered to, could result in personal injury or death. Do not proceed beyond a WARNING notice until the indicated conditions are fully understood and met.

NOTE

This **NOTE** sign denotes important information. It calls attention to a procedure, practice, or condition that is essential for the user to understand.

Caution



Do not exceed the operating input power, voltage, and current level and signal type appropriate for the instrument being used, refer to your instrument's Function Reference.



Electrostatic discharge (ESD) can damage the highly sensitive microcircuits in your instrument. ESD damage is most likely to occur as the test fixtures are being connected or disconnected. Protect them from ESD damage by wearing a grounding strap that provides a high resistance path to ground. Alternatively, ground yourself to discharge any static charge built-up by touching the outer shell of any grounded instrument chassis before touching the test port connectors.

Safety Summary

When you notice any of the unusual conditions listed below, immediately terminate operation and disconnect the power cable.

Contact your local Keysight Technologies sales representative or authorized service company for repair of the instrument. If you continue to operate without repairing the instrument, there is a potential fire or shock hazard to the operator.

- Instrument operates abnormally.
- Instrument emits abnormal noise, smell, smoke or a spark-like light during operation.
- Instrument generates high temperature or electrical shock during operation.
- Power cable, plug, or receptacle on instrument is damaged.
- Foreign substance or liquid has fallen into the instrument.

Manufacturer's Declaration

Herstellerbescheinigung

GERA- USCHEMISSION

LpA < 70 dB

am Arbeitsplatz

normaler Betrieb

nach DIN 45635 T. 19

Manufacturer's Declaration

ACOUSTIC NOISE EMISSION

LpA < 70 dB

operator position

normal operation

per ISO 7779

Regulatory Compliance Information

This product complies with the essential requirements of the following applicable European Directives, and carries the CE marking accordingly:

- The Low Voltage Directive 2006/95/EC
- The EMC Directive 2004/108/EEC

To obtain Declaration of Conformity, please contact your local Keysight Technologies sales office, agent or distributor.

Safety Notice Supplement

- This equipment complies with EN/IEC61010-1:2001.
- This equipment is of MEASUREMENT CATEGORY I (CAT I). Do not use for CAT II, III, or IV.
- Do not connect the measuring terminals to mains.
- This equipment is a POLLUTION DEGREE 2, INDOOR USE product.
- This equipment is tested in stand-alone condition and in combination with the accessories supplied by Keysight Technologies against the requirement of the standards described in the Declaration of Conformity. If it is used as a system component, compliance of related regulations and safety requirements are to be confirmed by the builder of the system.

General Safety Precautions

The following general safety precautions must be observed during all phases of operation, service, and repair of this instrument. Failure to comply with these precautions or with specific WARNINGS elsewhere in this manual may impair the protection provided by the equipment. Such noncompliance would also violate safety standards of design, manufacture, and intended use of the instrument. Keysight Technologies assumes no liability for the customer's failure to comply with these precautions.

NOTE

The E5061B complies with INSTALLATION CATEGORY II as well as POLLUTION DEGREE 2 in IEC61010-1. The E5061B is an INDOOR USE product.

NOTE

The LEDs in the E5061B are Class 1 in accordance with IEC60825-1, CLASS 1 LED PRODUCT.

- Ground the Instrument

To avoid electric shock, the instrument chassis and cabinet must be grounded with the supplied power cable's grounding prong.

- Do NOT Operate in an Explosive Atmosphere

Do not operate the instrument in the presence of inflammable gases or fumes. Operation of any electrical instrument in such an environment clearly constitutes a safety hazard.

- Keep Away from Live Circuits

Operators must not remove instrument covers. Component replacement and internal adjustments must be made by qualified maintenance personnel. Do not replace components with the power cable connected. Under certain conditions, dangerous voltage levels may remain even after the power cable has been disconnected. To avoid injuries, always disconnect the power and discharge circuits before touching them.

- DO NOT Service or Adjust the Instrument Alone

Do not attempt internal service or adjustment unless another person, capable of rendering first aid and resuscitation, is present.

- Do NOT Substitute Parts or Modify the Instrument

To avoid the danger of introducing additional hazards, do not install substitute parts or perform unauthorized modifications to the instrument. Return the instrument to a Keysight Technologies Sales and Service Office for service and repair to ensure that safety features are maintained in operational condition.

- Dangerous Procedure Warnings

Caution
General Safety Precautions

Warnings, such as the example below, precede potentially dangerous procedures throughout this manual. Instructions contained in the warnings must be followed.

WARNING

Dangerous voltage levels, capable of causing death, are present in this instrument. Use extreme caution when handling, testing, and adjusting this instrument.

Safety Symbols

General definitions of safety symbols used on the instrument or in manuals are listed below.



Instruction Manual symbol: the product is marked with this symbol when it is necessary for the user to refer to the instrument manual.



Alternating current.



Direct current.



On (Supply).



Off (Supply).



In-position of push-button switch.



Out-position of push-button switch.



A chassis terminal; a connection to the instrument's chassis, which includes all exposed metal structure.



Standby.

Caution
Safety Symbols

Certification

Keysight Technologies certifies that this product met its published specifications at the time of shipment from the factory. Keysight Technologies further certifies that its calibration measurements are traceable to the United States National Institute of Standards and Technology, to the extent allowed by the Institution's calibration facility or by the calibration facilities of other International Standards Organization members.

Documentation Warranty

The material contained in this document is provided "as is," and is subject to being changed, without notice, in future editions. Further, to the maximum extent permitted by applicable law, Keysight disclaims all warranties, either express or implied with regard to this manual and any information contained herein, including but not limited to the implied warranties of merchantability and fitness for a particular purpose. Keysight shall not be liable for errors or for incidental or consequential damages in connection with the furnishing, use, or performance of this document or any information contained herein. Should Keysight and the user have a separate written agreement with warranty terms covering the material in this document that conflict with these terms, the warranty terms in the separate agreement will control.

Exclusive Remedies

The remedies provided herein are Buyer's sole and exclusive remedies. Keysight Technologies shall not be liable for any direct, indirect, special, incidental, or consequential damages, whether based on contract, tort, or any other legal theory.

Assistance

Product maintenance agreements and other customer assistance agreements are available for Keysight Technologies products.

For any assistance, contact your nearest Keysight Technologies Sales and Service Office. Addresses are provided at the back of this manual.

Manuals for E5061B

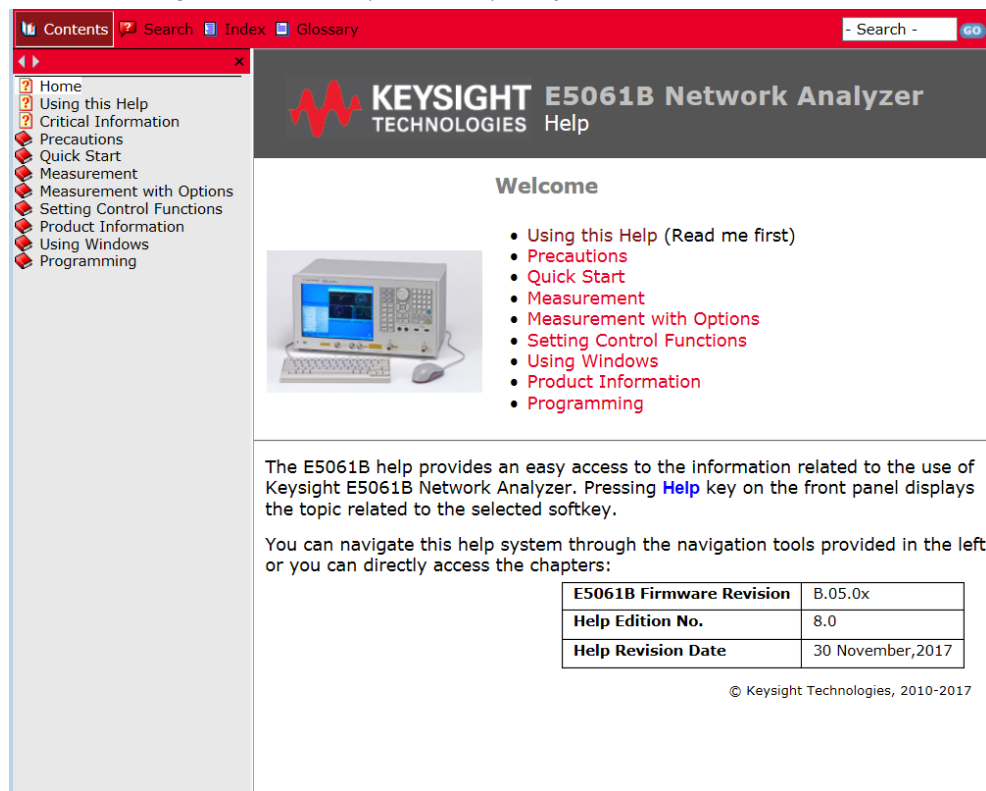
Keysight provides the following three manuals for E5061B. The latest version of all documentations can be downloaded from <http://www.keysight.com/find/e5061b-manual>.

Installation Guide

The installation guide (this manual) provides start up setup information when you use the E5061B for the first time and troubleshooting information when the Windows cannot be boot up. See this manual first when you use the E5061B for the first time.

Online Help

The online help provides the information about the quick start, measurement operation, programming, built-in VBA, I/O interface This is pre-installed in the E5061B. Press **[Help]** hard key on the front panel to open. Quick Start helps in understanding the E5061B operation quickly.



The E5061B help provides an easy access to the information related to the use of Keysight E5061B Network Analyzer. Pressing **Help** key on the front panel displays the topic related to the selected softkey.

You can navigate this help system through the navigation tools provided in the left or you can directly access the chapters:

E5061B Firmware Revision	B.05.0x
Help Edition No.	8.0
Help Revision Date	30 November,2017

© Keysight Technologies, 2010-2017

The latest version of online help is available at:
<http://ena.tm.keysight.com/e5061b/manuals/webhelp/eng/>

The online help has context sensitive help, which is a great feature of the E5061B help. It allows you to get information about the selected softkey by pressing the Help key in the E5061B or by pressing F1 in a keyboard attached to the E5061B or by clicking the help button in a dialog box. With context

Caution
Manuals for E5061B

sensitive help, users can receive information quickly about the area the user is working in the firmware of the E5061B. It provides information relevant to the task that needs to be accomplished and reduces the time to search relevant information required to complete a task.

Service Guide

The service manual provides information about the parts, troubleshooting, performance test, adjustment and service menu.

Caution
Manuals for E5061B

Table of Contents

1. Installation	
Checking the Shipment	16
Environmental Requirements	17
Operating Environments	17
Ventilation Requirement	17
Protection Against Electrostatic Discharge (ESD)	18
Ensuring Adequate Free Space around Analyzer for Immediate Disconnection of Power Cable in Case of Emergency	19
Installing Front Handles/Rack Mounting Flanges	20
How to Install the Handle Kit (Option 1CN)	21
How to Install the Rack-mount Kit (Option 1CM)	21
How to Install the Rack-mount and Handle Kit (Option 1CP)	22
Connecting the Accessories	23
Connecting the BNC Adaptor (Option 1E5)	23
Connecting Mouse and Keyboard	23
Power Supply	24
Verification of the Power Supply	24
Verification and Connection of Power Cable	24
Blown Fuses	24
Starting the E5061B	26
Turning the Power ON and OFF	26
Turning the Power ON	26
Turning the Power OFF	26
Disconnection from Supply Source	27
Initial Registration of E5061B	29
Windows 7/ Windows 10	30
Windows XP Pro for Embedded Systems (HDD Rev KY22x and above)	31
Windows XP Pro for Embedded Systems (HDD Rev KY21x and below)	33
Windows Vista Business	34
Calibration of the Touch Screen	37
2. Troubleshooting	
Troubleshooting during Startup	39
System Recovery	40
Notes on executing the factory recovery function	40
Procedure to execute the factory recovery	40
Windows Vista Business	41
Windows XP Pro for Embedded Systems/Windows 7/Windows 10	44

Contents

1 Installation

This chapter provides information about how to set up the Keysight E5061B.

Checking the Shipment

After you receive the analyzer, carry out checks during unpacking according to the following procedure.

WARNING

When unpacking the analyzer, if the exterior of the analyzer (such as the cover, front/rear panel, LCD screen, power switch, and port connectors) appear to be damaged during transport, do not turn on the power switch. Otherwise, you may get an electric shock.

Step 1. Check that the packing box or shock-absorbing material used to package the analyzer has not been damaged.

NOTE

If the packing box or shock-absorbing material has been damaged, leave the packing box and shock-absorbing material as is until other inspection items are checked as follows.

Step 2. Check the packaged items supplied with the analyzer for any damage or defects.

Step 3. By referring to the furnished contents list, check that all packaged items supplied with the analyzer have been received as per the specified options.

Step 4. After checking, if one of the following applies, contact your nearest Keysight Technologies sales and service office.

1. The packing box or shock-absorbing material used to package the analyzer has been damaged or the shock-absorbing material has traces where extreme force has been applied.
2. A packaged item supplied with the analyzer has mechanical damage or defects.
3. A packaged item supplied with the analyzer is missing.
4. A fault has been detected in the subsequent operation check of the analyzer.

If an abnormality is detected in step 1, contact the company that transported the analyzer as well as your nearest Keysight Technologies sales and service office. For inspection by the transport company, save the packing box, shock-absorbing material, and packaged items as you received them.

Environmental Requirements

Set up the E5061B where the following environmental requirements are met.

Operating Environments

Ensure that the operating environment meets the following requirements.

Temperature	5°C to 40°C
Temperature range at the error-correction	23°C ± 5°C (<1°C deviation from the temperature when performing the error-correction)
Humidity	20% to 80% at wet bulb temperature <+29°C (non-condensation)
Altitude	0 to 2,000m (0 to 6,561 feet)
Vibration	0.21G maximum, 5Hz to 500Hz

NOTE

Above environmental requirements are NOT for the specifications and measurement accuracy of the analyzer, but for the operating environment of the analyzer.

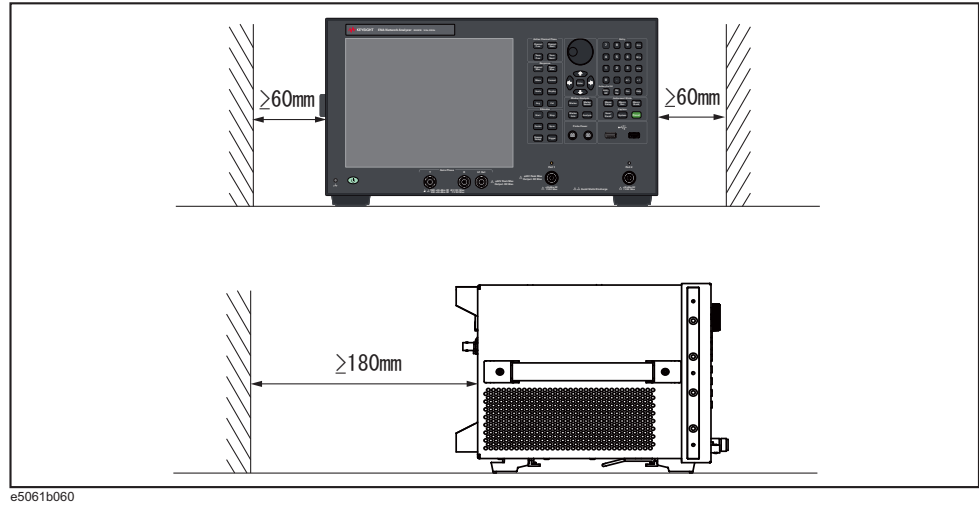
Ventilation Requirement

To ensure safety requirements, the specifications and measurement accuracy of the analyzer, you must keep the environmental temperature within the specified range by providing appropriate cooling clearance around the analyzer or, for the rack mount type, by forcefully air-cooling inside the rack housing. For more information on environmental temperature to satisfy the specifications and measurement accuracy of the analyzer, see the specification in the E5061B Online Help.

When the environmental temperature around the analyzer is kept within the temperature range of the operating environment specification (See Section **“Operating Environments” on page 17**), the analyzer conforms to the requirements of the safety standard. Furthermore, under that temperature requirement, the analyzer still conforms to the requirements of the safety standard even when placing the analyzer with cooling clearance as follows:

Requirements	
Back	≤ 180mm
Sides	≤ 60mm (both right and left)

Figure 1-1 Ventilation space at the installation



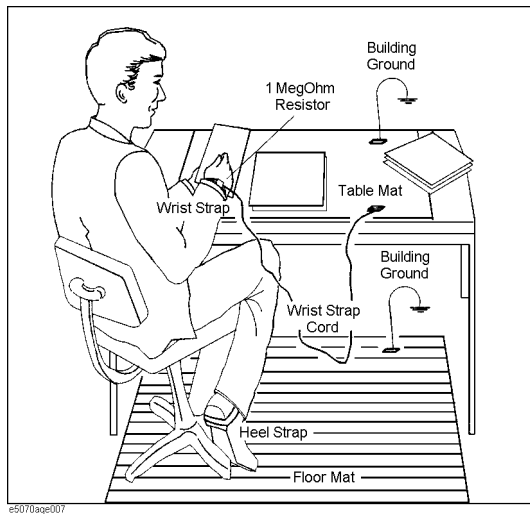
NOTE

Place the E5061B in a proper position as shown in **Figure 1-1**

Protection Against Electrostatic Discharge (ESD)

Set up a static-safe work-station to protect the electronic components from the damage by the electrostatic discharge (ESD) as shown in **Figure 1-2**.

Figure 1-2 Example of the static-safe work station



Ensuring Adequate Free Space around Analyzer for Immediate Disconnection of Power Cable in Case of Emergency

As described in **“Disconnection from Supply Source” on page 27**, the power supply is disconnected by removing the power cable’s connector plug from either the AC outlet or the E5061B unit. When installing the E5061B, ensure that there is sufficient free space around the unit to permit quick disconnection of the plug (from AC outlet or E5061B unit) in case of emergency.

Installing Front Handles/Rack Mounting Flanges

The E5061B can be installed on a workbench or in a rack. This section describes how to install the front handles (Option 1CN) used for moving or transporting the instrument, and how to install the analyzer in an equipment rack as part of a measurement system (Option 1CM: without the handles, Option 1CP: with the handles).

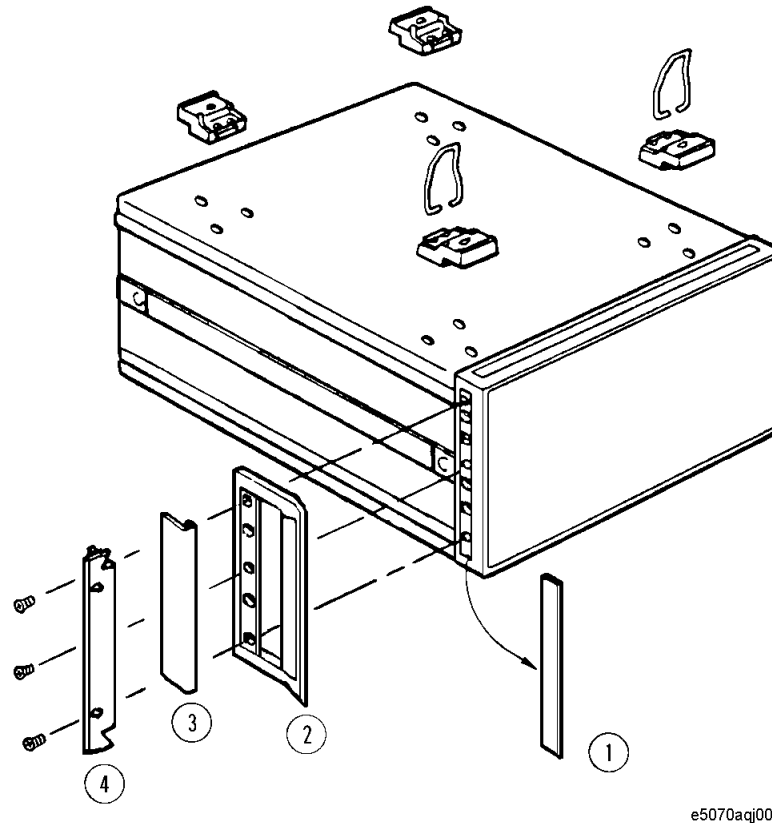
Table 1-1 Keysight E5061B handles/rack mounting options

Option	Name	Keysight Part Number
1CN	Handle Kit	5063-9229
1CM	Rack-mount Kit	5063-9216
1CP	Rack-mount and Handle Kit	5188-4430

Table 1-2 Contents of each option

Option	Contents	Quantity
1CN	Front Handles	2
	Screws	6
	Trim Strips	2
1CM	Rack-mounting flanges (locking side plate)	2
	Screws	6
1CP	Rack-mounting flanges (locking side plate)	2
	Front Handles	2
	Screws	8

Figure 1-3 Installing front handle/rack-mount kits



e5070aqj009

How to Install the Handle Kit (Option 1CN)

The handle kit used for transport and relocation of the E5061B. While referring to **Figure 1-3** install the handle kit by following these steps.

- Step 1.** Remove the adhesive-backed trim strip (1) from each side of the outer frame of the E5061B front panel.
- Step 2.** Use the provided screws to mount the front handles (2) on each side of the E5061B front panel frame.
- Step 3.** Attach the modified trim strip (3) provided to each front handle in order to cover the front panel locking screws.

WARNING

If the installed front handle becomes damaged, replace it with a new one immediately. A damaged handle can break while moving or lifting the instrument and cause personal injury or damage to the instrument.

How to Install the Rack-mount Kit (Option 1CM)

The rack-mount kit includes two flanges (locking side plates) for mounting the E5061B on a rack (482.6 mm/19 inches) conforming to the EIA Standard. While referring to **Figure 1-3**, install the rack-mount kit by following these steps.

- Step 1.** Remove the adhesive-backed trim strip (1) from each side of the outer frame of the E5061B front panel.
- Step 2.** Use the screws provided to mount a rack-mounting flange (4) on each side of the E5061B front panel frame.
- Step 3.** Remove the four bottom feet of the E5061B (lift the bar marked TAB on the inner side of the foot and slide the foot toward the bar).
- Step 4.** Mount the E5061B on the rack.

How to Install the Rack-mount and Handle Kit (Option 1CP)

The rack-mount and handle kit includes both the rack-mounting flanges (locking side plates) and front handles. While referring to **Figure 1-3**, install the rack-mount kit by following these steps.

- Step 1.** Remove the adhesive-backed trim strip (1) from each side of the outer frame of the E5061B front panel.
- Step 2.** Use the screws provided to mount a front handle (2) and rack-mounting flange (4) on each side of the E5061B front panel frame.

CAUTION

Use both a front handle and a rack-mounting flange in the same time certainly. Do not attempt to install flanges or handles separately with hardware provided. Serious electrical damage will occur to the instrument.

- Step 1.** Remove the four bottom feet of the E5061B (lift the bar marked TAB on the inner side of the foot and slide the foot toward the bar).
- Step 2.** Mount the E5061B on the rack.

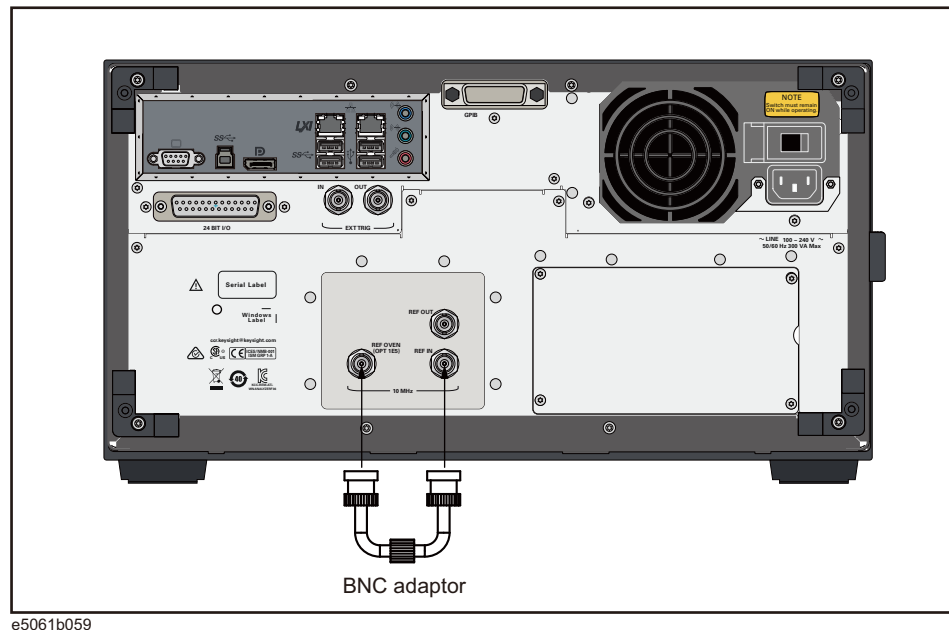
Connecting the Accessories

You need to connect some accessories before use.

Connecting the BNC Adaptor (Option 1E5)

When the E5061B is equipped with Option 1E5 (high-stability frequency standard), connect the BNC adaptor from the Ref Oven terminal to the Ref In terminal on the rear panel as shown in **Figure 1-4**. The BNC adaptor is included in Option 1E5. When Option 1E5 is installed, the frequency accuracy and stability of the E5061B improves further.

Figure 1-4 Connecting the BNC adaptor



Connecting Mouse and Keyboard

The E5061B allows you to connect Mouse and/or keyboard through USB. USB mouse and keyboard can be connected with the USB ports on the front or rear panels.

Initial registration of the E5061B requires the mouse and keyboard before turning on the power.

Power Supply

Before turning on the E5061B power, check the following.

Verification of the Power Supply

Confirm that the power supplied to the E5061B meets the following requirements:

Requirements	
Voltage	90 to 132 VAC or 198 to 264 VAC ¹
Frequency	47 to 63 Hz
Maximum power consumption	300 VA

1. Switched automatically by the E5061B in conformity to the voltage used.

Verification and Connection of Power Cable

The three-wire power cable attached to the E5061B has one wire serving as a ground. Using this power cable allows the E5061B to be grounded, thereby protecting you against electrical shock from the power outlet.

Step 1. Confirm that the power cable is not damaged.

WARNING

NEVER use a power cable showing any sign of damage. Faulty cables can cause electrical shock.

Step 1. Use the supplied cable to connect between the power cable receptacle (Figure 1-5 on page 27) on the rear panel of the E5061B and a three-wire power outlet with the grounding prong firmly connected in the ground slot

WARNING

Use the supplied power cable with grounding wire to securely ground the E5061B.

Power cord list, 16000-99101 shows the power cable options.

Blown Fuses

If the fuse appears to have blown during operation, this instrument may be subject to failure and must be repaired. For any assistance, contact Keysight Technologies Customer contact center listed at the end of this guide.

The product uses the following fuse types:

UL/CSA Type, Slow-Blo, 10 A-250 Vac.

WARNING

DO NOT replace the fuse yourself; doing this may expose you to electrical shock.

Starting the E5061B

This section describes how to turn on/off the E5061B power and how to cut off the power supply in an emergency.

Turning the Power ON and OFF

The standby switch can turn/off the E5061B. The color on the button shows the status, as shown below:

Indicator Color	Description
Green	Normal power on status
Orange	Standby status
Red	Illegal power on status

Perform the following steps to turn the power ON or OFF.

Turning the Power ON

- Step 1.** Confirm if the Line Switch on the rear panel is on. The switch should always be turned on.
- Step 2.** Press the standby switch once and it changes to green color.
This operation turns ON the power, and the E5061B starts the self-test.
- Step 3.** Confirm that the self-test indicates normal operation.
Normal operation is confirmed by the self-test if no error message appears.

Turning the Power OFF

- Step 1.** To turn off the power of the E5061B, first, press this standby switch or send a shutdown command from the external controller to activate the shutdown process (the process of software and hardware necessary to turn off the power supply). This puts the E5061B into the standby state and the button changes to orange color.

Step 2. Next, if necessary, turn off power supply to the power cable receptacle (Line Switch) on the rear panel.

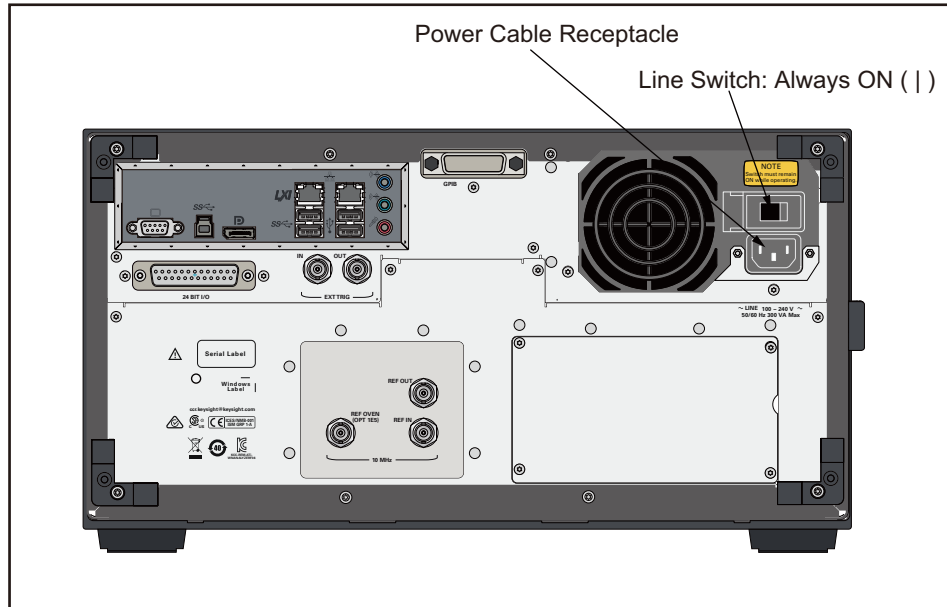
NOTE

Under normal use, **never directly interrupt the power supply to the power cable receptacle on the rear panel when the power supply is on.** Always keep the Line Switch ON and never turn it.

If you directly interrupt the power supply to the power cable receptacle when the power supply is on, or turn off the Line Switch, the shutdown process will not work. This could damage the software and hardware of the E5061B and lead to device failure.

Turning on the power supply after a faulty shutdown may cause the system to start up in a condition called “safe mode.” If this occurs, first shut down the system to set it to the standby state and then turn on the power supply again to start up the system in normal mode.

Figure 1-5 Line switch (Always ON) and power cable receptacle



e5061b061

Disconnection from Supply Source

The power supply of the E5061B is cut off by disconnecting the plug of the power cable (on either AC outlet side or E5061B side). When it is necessary to disconnect the power supply in order to avoid shock hazards, etc., pull out the power cable plug from either the AC outlet side or the E5061B side

NOTE

To allow this operation to be performed smoothly, be sure to follow the guidelines in **“Ensuring Adequate Free Space around Analyzer for Immediate Disconnection of Power Cable in Case of Emergency”** on page 19.

When turning the power OFF under normal circumstances, always follow the methods described in **“Turning the Power OFF”** on page 26.

Initial Registration of E5061B

When you start up the E5061B for the first time, you need to perform the initial registration of the Windows operating system of the E5061B.

NOTE

There are four kind of windows licenses for E5061B:

- Windows Vista Business
- Windows XP Pro for Embedded Systems
- Windows 7
- Windows 10

The license is shown at the Windows License label on the E5061B rear panel.

You have different initial registration procedure depending on the windows license.

As for Windows 7, 10 and XP Pro for Embedded Systems, you have different initial registration procedure depending on the hard disk drive (HDD revision).

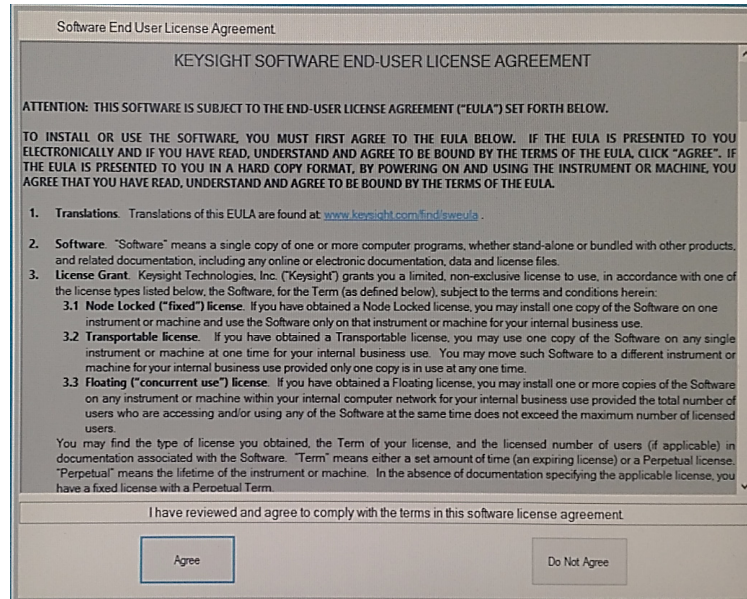
NOTE

If you perform the following procedure incorrectly, a message will prompt to give you option to return to the previous registration screen and perform the registration. In such case, follow the instruction to return to the previous registration screen.

Windows 7/ Windows 10

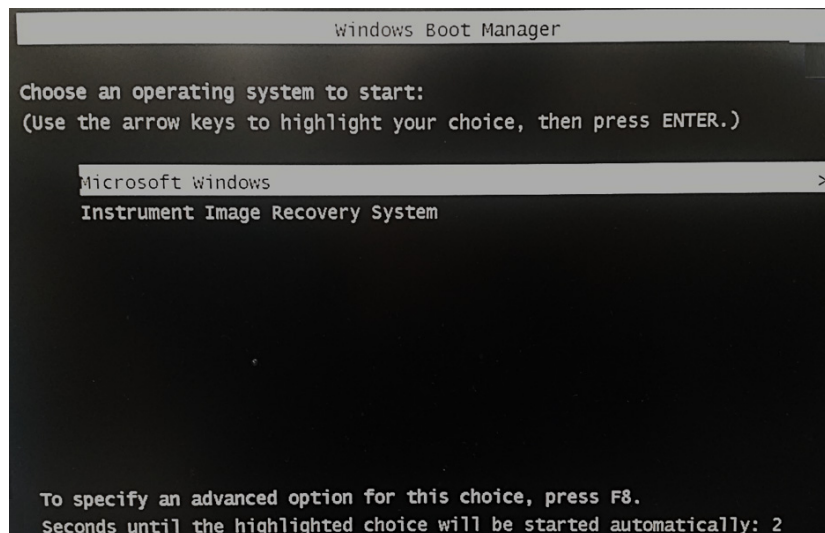
- Step 1.** Turn on the E5061B. Do not touch any key on the front panel during boot up.
- Step 2.** In the Keysight Software End User License Agreement dialog box, select the **Agree** button. The dialog box as shown in **Figure 1-6**.

Figure 1-6 Keysight Software End User License Agreement dialog box



- Step 3.** The screen as shown in the **Figure 1-7** appears. Select **Microsoft windows** and press **[Enter]**.

Figure 1-7 System start up screen in Windows 10



NOTE

After several seconds, the next screen appears automatically even if you do not press any key.

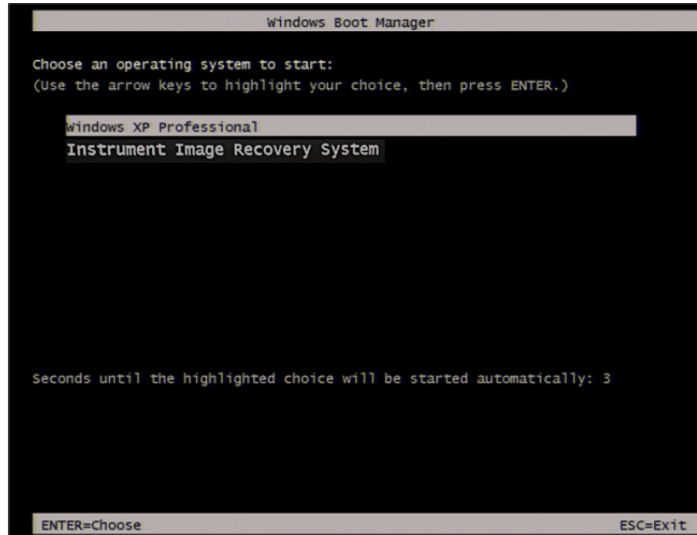
Step 4. After a while, the E5061B restarts automatically.

Windows XP Pro for Embedded Systems (HDD Rev KY22x and above)

Step 1. Turn on the E5061B. Do not touch any key on the front panel during boot up.

Step 2. The screen as shown in the **Figure 1-8** appears. Select **Windows XP Professional** and press **[Enter]**.

Figure 1-8 System Start up screen in Windows XP Pro for Embedded Systems (1/2)



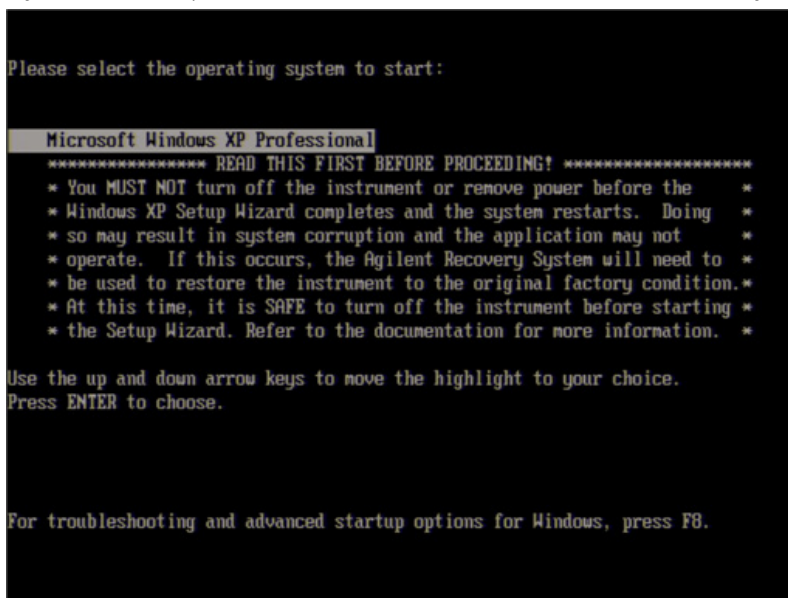
NOTE

After several seconds, the next screen appears automatically even if you do not press any key.

Step 3. The screen as shown in the **Figure 1-9** appears. Press **[Enter]**.

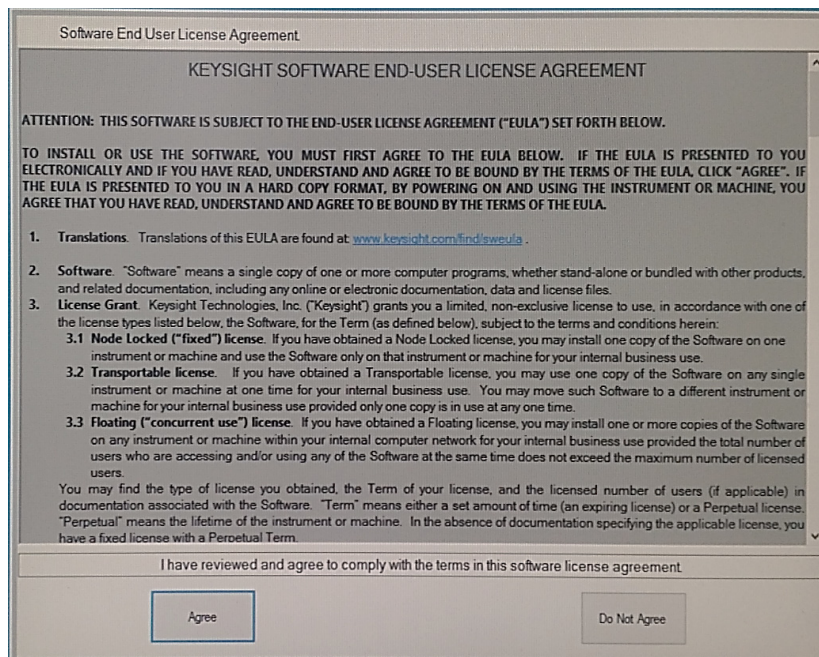
Installation
Initial Registration of E5061B

Figure 1-9 System start up screen in Windows XP Pro for Embedded Systems (2/2)



Step 4. In the Keysight Tech. Software End User License Agreement dialog box, select the Agree button. **Figure 1-10** shows the license agreement dialog box in Windows XP Pro for Embedded Systems (for HDD Rev KY22x and above).

Figure 1-10 Keysight Software End User License Agreement dialog box



Step 5. After a while, the E5061B restarts automatically.

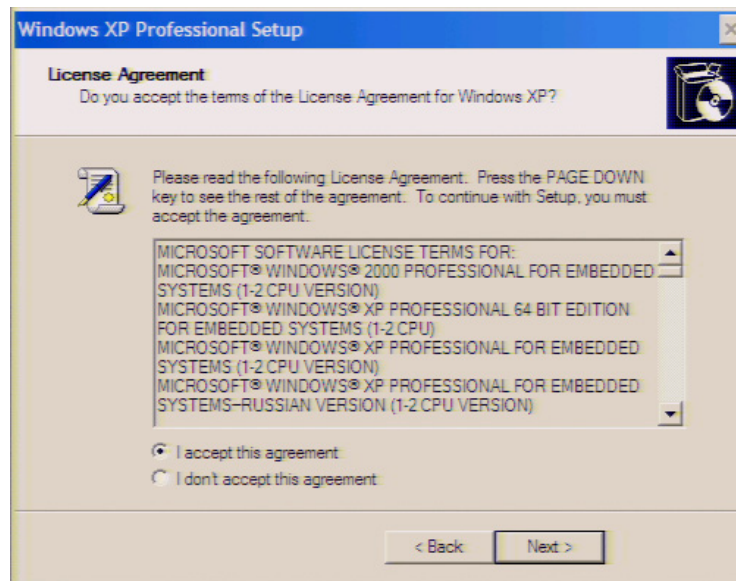
Windows XP Pro for Embedded Systems (HDD Rev KY21x and below)

Step 1-4 Follow the steps of Windows XP Pro for Embedded Systems (HDD Rev KY22x and above).

Step 5. In the License agreement dialog box, select the I accept this agreement box and click the Next > button. **Figure 1-11** shows the license agreement dialog box in Windows XP Pro for Embedded Systems (for HDD Rev KY21x and below).

Figure 1-11

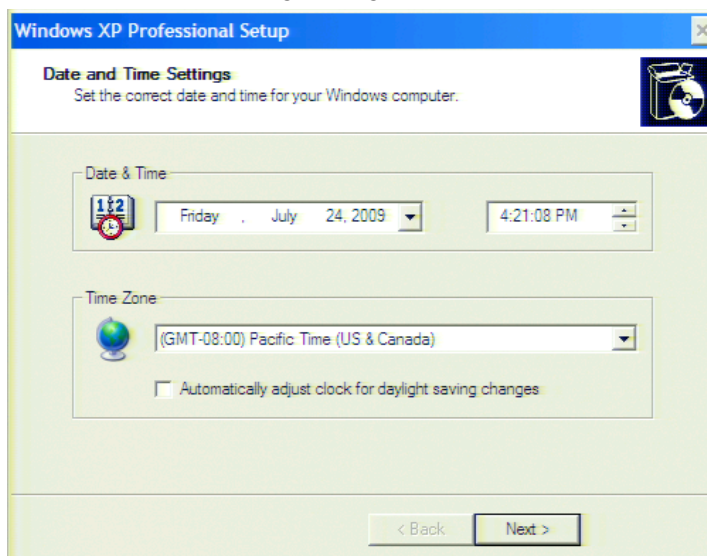
Windows XP Pro for Embedded Systems license agreement dialog box



Step 6. In the next dialog box, set the date and time for your Windows. Then, click the **Next>** button (**Figure 1-12**).

Figure 1-12

Date and Time Setting dialog box



Step 7. After a while, the E5061B restarts automatically.

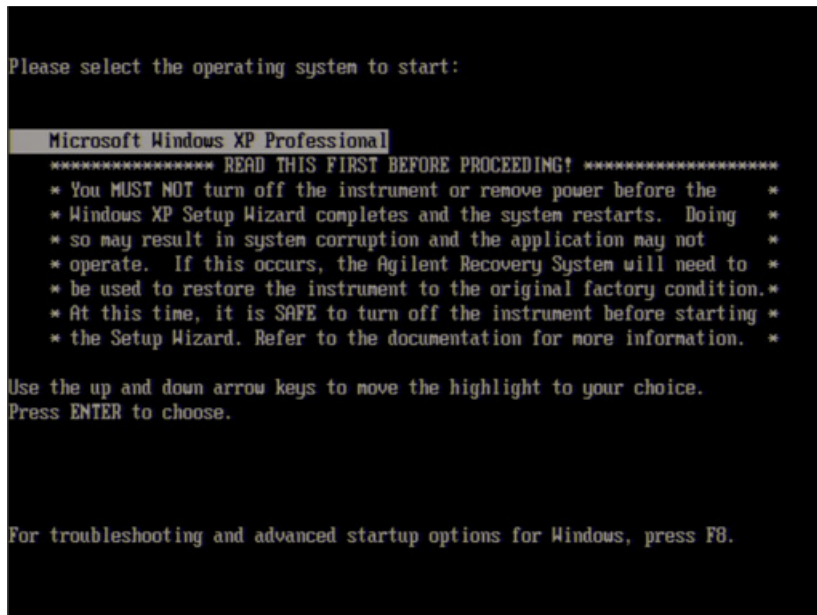
Windows Vista Business

Step 1. Follow the steps of Windows XP Pro for Embedded Systems (HDD Rev KY22x and above).

Step 2. The screen as shown in the [Figure 1-13](#) appears. Select Microsoft Windows XP Professional and press [Enter].

Figure 1-13

System start up screen in Windows Vista Business (1/2)

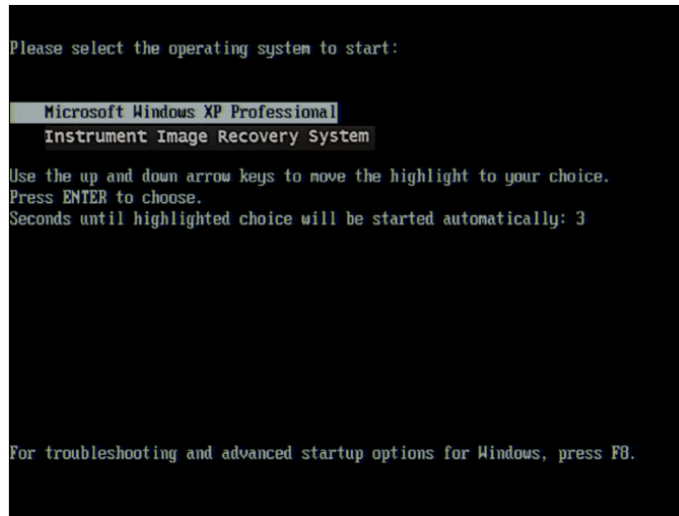


NOTE

After several seconds, the next screen appears automatically even if you do not press any key.

Step 3. The screen as shown in the [Figure 1-14](#) appears. Press [Enter].

Figure 1-14 System start up screen in Windows Vista Business (2/2)



Step 4. The Windows XP Professional Setup wizard appears. Click the Next > button (Figure 1-15).

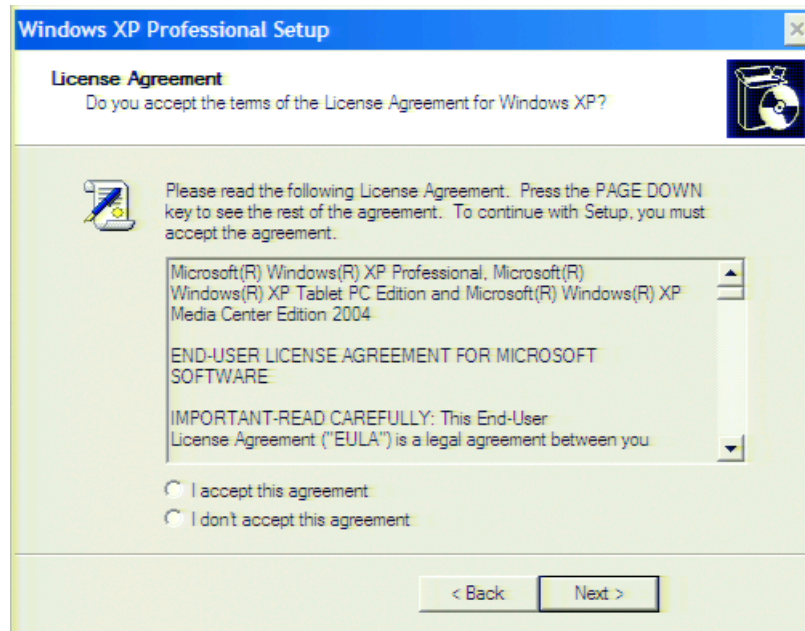
Figure 1-15 Windows XP Professional Setup wizard



Step 5. In the License agreement dialog box, select the I accept this agreement box and click the Next > button. Figure 1-16 shows the license agreement dialog box in Windows Vista Business.

Figure 1-16

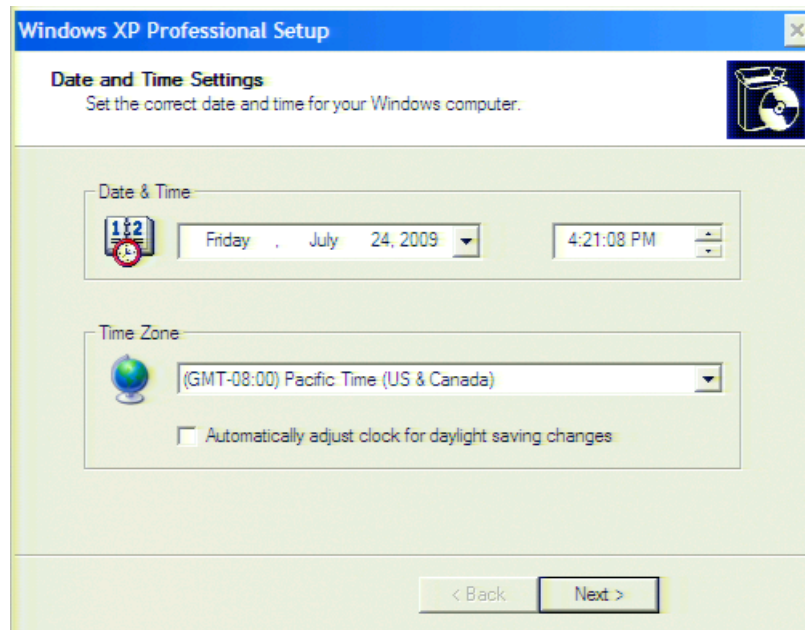
Windows Vista Business license agreement dialog box



Step 6. In the next dialog box, set the date and time for your Windows. Then, click the **Next>** button (Figure 1-17).

Figure 1-17

Date and Time Setting dialog box



Step 7. After a while, the E5061B restarts automatically. The Keysight Recovery Image Setup dialog box appears. Click the **OK** button.

Step 8. Once the recovery image setup is completed, the E5061B restarts again.

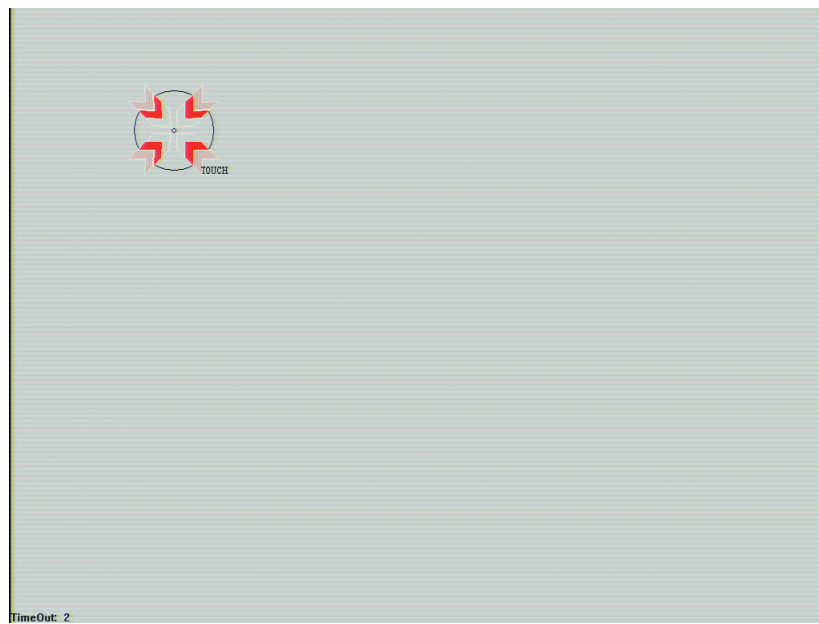
Calibration of the Touch Screen

When E5061B measurement screen appears, you have to calibrate the touch screen. Follow the procedure described below to calibrate the touch screen.

- Step 1.** Press **System**.
- Step 2.** Press Service Menu.
- Step 3.** Press Test Menu.
- Step 4.** Press Adjust Touch Screen. The touch screen calibration screen (**Figure 1-18**) appears.

Figure 1-18

Touch Panel Calibration Screen



- Step 5.** Touch the symbol on the upper left of the screen with your finger. The symbols also appears on the upper right, lower left, and lower right of the screen. Touch all the symbols in that order with your finger.

Touching all the four locations described above with your finger automatically concludes the touch screen calibration.

NOTE

If you do not start to perform the touch screen calibration within several seconds, the previous measurement screen re-appears automatically.

Installation
Calibration of the Touch Screen

2 Troubleshooting

This chapter describes the troubleshooting process during start up and the procedure of the operating system (OS) recovery when the Windows OS has been damaged.

Troubleshooting during Startup

When you encounter problems during start up, see [Table 2-1](#). System recovery saves most of problems.

Table 2-1 Troubleshooting during startup

Symptom	Solution
Turning on (I) the standby switch does not start up the system.	Confirm that the power cable is properly plugged in. Confirm that the line switch at the rear panel is turned on.
The system starts up, but it automatically shuts down immediately.	Execute the system recovery.
The system starts up, but it enters the service mode (The status bar at the lower right of the screen displays SVC in red).	
The measurement screen appears after start up, but the power-on test fails with Error Message 241 prompting on a red background in the instrument's message/warning area at the lower left of the screen.	

System Recovery

By executing system recovery, you can return the E5061B's system (the Windows operating system and the firmware) to the factory state (at the time of purchase*).

CAUTION

Strictly follow the steps described below. If you do any operation other than the following steps, the system may not be recovered.

Notes on executing the factory recovery function

Executing the factory recovery function causes the following conditions:

- In addition to the Windows operating system and the firmware, the following settings of the E5061B are returned to the factory state.
 - a. Network setting
 - b. GPIB setting
 - c. Printer setting
- The driver for the supported printer which is installed after purchase is deleted.
- You need to execute initial registration again.

Files that you have created using the save function (files in the D drive) are not affected. However, Keysight recommends backing them up before executing system recovery for precautionary purposes. For more information on backup, refer to *"Backing Up the Data"* as described in *E5061B Online Help*.

Procedure to execute the factory recovery

This section describes how to return the contents of the C drive to the factory state.

NOTE

You need a keyboard for this operation.

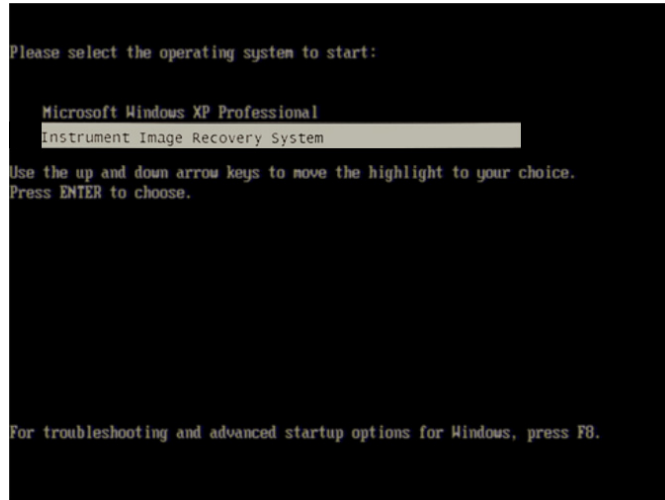
- Step 1.** Shut down the E5061B.
- Step 2.** Disconnect all of the USB device from the USB ports.
- Step 3.** Connect the keyboard to the E5061B.
- Step 4.** Press the standby switch of the E5061B to turn it on.

*. The default setting of the hard disk is recovered during the system recovery. For the hard disk that had failed earlier and had been replaced (after purchase), its default setting may not be the same as the factory state.

Windows Vista Business

- Step 5.** When the screen as shown in the figure below appears, select **Keysight Recovery System** and press **[Enter]**.

Figure 2-1 Keysight Recovery System selection screen

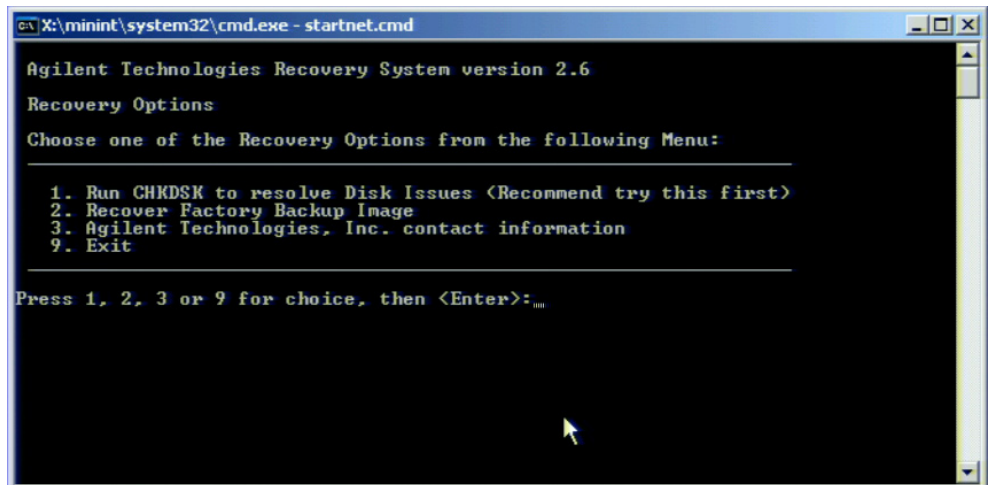


NOTE

After several seconds, the next screen appears automatically even if you do not press any key.

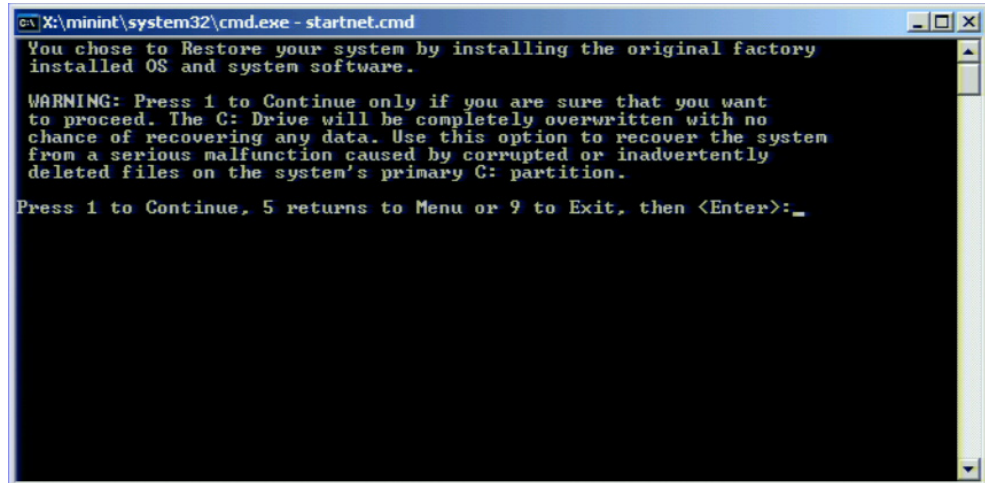
- Step 6.** Type **2** to select **Recover Factory Backup Image** option and press **[Enter]**.

Figure 2-2 System recovery selection screen



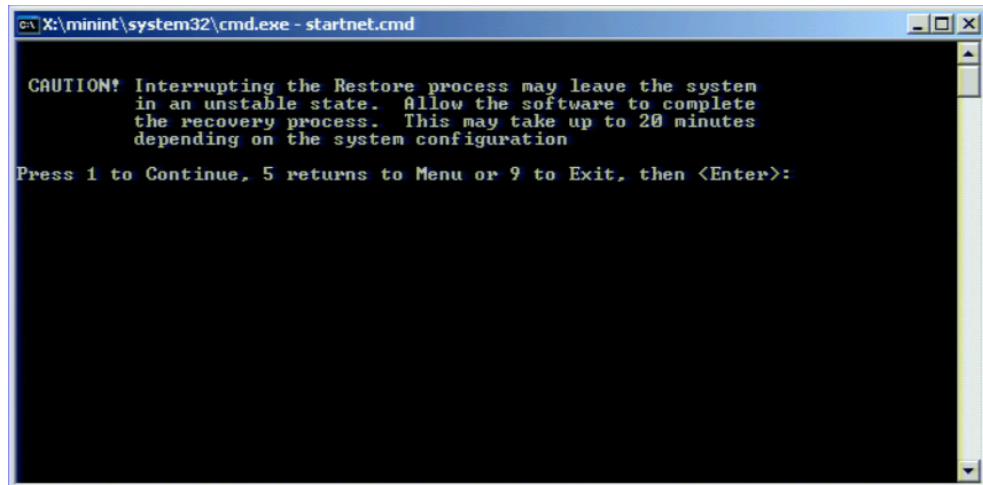
- Step 7.** A confirmation message appears. Type **1** and press **[Enter]** to continue the process.

Figure 2-3 System recovery confirmation screen (1/2)



Step 8. Another confirmation message appears. It also displays the approximate run time for the system configuration process. Type **1** and press **[Enter]** to continue the process. The recovery takes a few minutes depending on the amount of data.

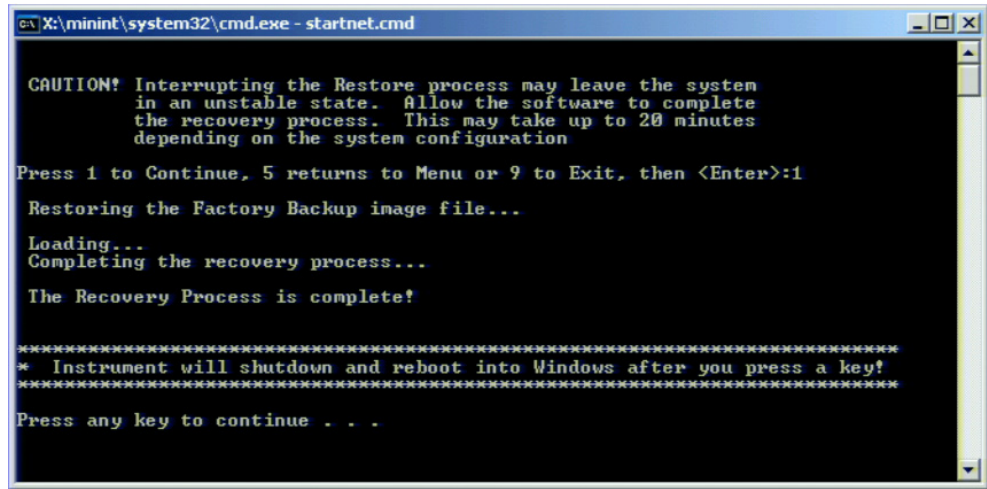
Figure 2-4 System recovery confirmation screen (2/2)



Step 9. Once the recovery process is completed, completion message prompts. Press any key to continue. The E5061B restarts automatically.

Figure 2-5

Recovery Option confirmation dialog box



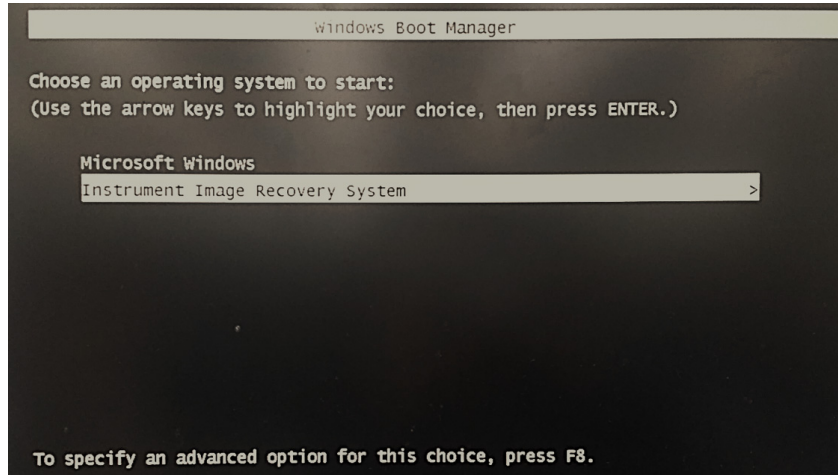
NOTE

After several seconds, the E5061B restarts automatically even if you do not press any key.

Windows XP Pro for Embedded Systems/Windows 7/Windows 10

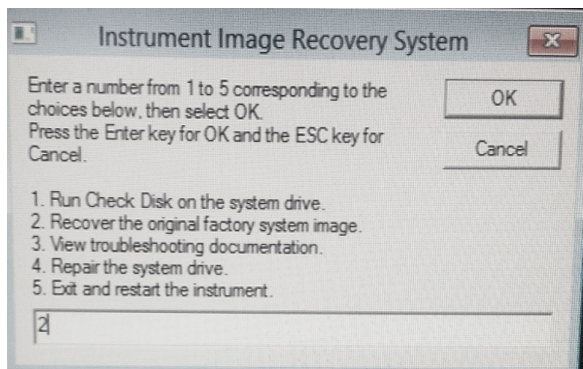
Step 5. When the screen as shown in the figure below appears, select **Instrument Image Recovery System** and press **[Enter]**.

Figure 2-6 Keysight Recovery System selection screen



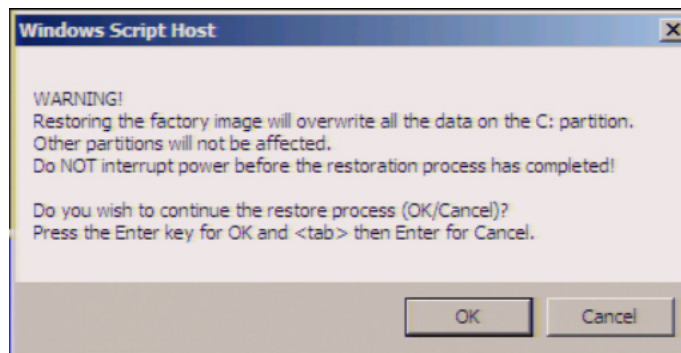
Step 6. Type **2** to select **Recover Factory Backup Image** option and press **[Enter]**.

Figure 2-7 System Recovery selection screen



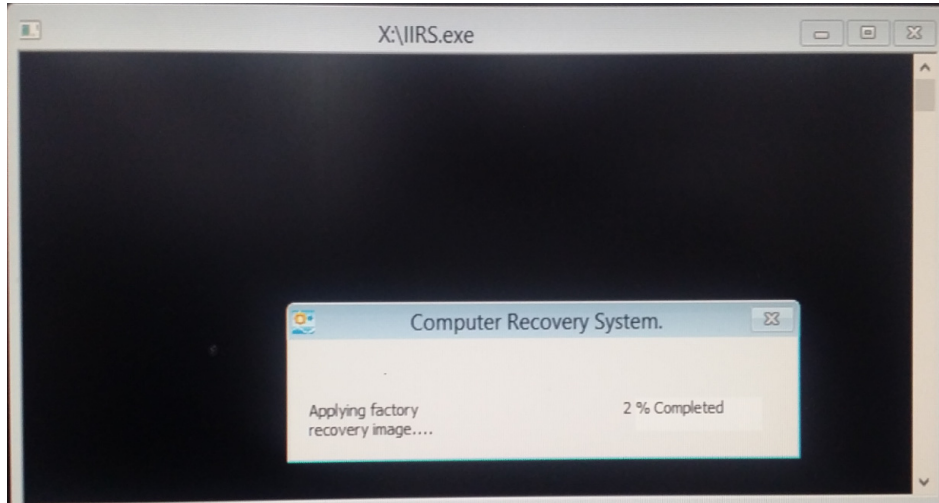
Step 7. A confirmation message appears. Click **OK** to continue the process.

Figure 2-8 System recovery confirmation screen



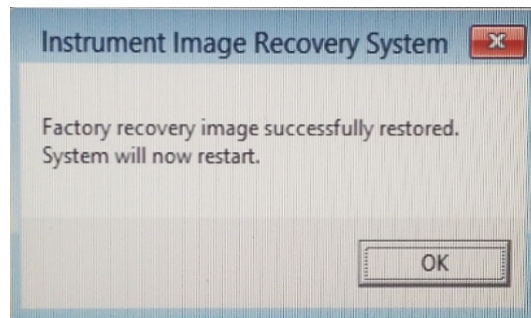
- Step 8.** The progress of the system configuration is displayed on the screen. The recovery takes a few minutes depending on the amount of data.

Figure 2-9 System configuration progress screen



- Step 9.** Once the recovery process is completed, completion message prompts. Click **OK**. The E5061B restarts automatically.

Figure 2-10 Recovery Option confirmation dialog box



- Step 10.** After the restart, execute initial registration. For information on the execution procedure, refer to [“Initial Registration of E5061B” on page 29](#).
- Step 11.** Execute the calibration of the touch screen. For information on the execution procedure, refer to [“Calibration of the Touch Screen” on page 37](#).

CAUTION

Never turn off the power during the system recovery because doing so may cause serious damage to the E5061B.

Troubleshooting
System Recovery

A

Accessories

connecting accessories, 23

C

connection

Connecting accessories, 23

Connecting BNC Adaptor, 23

Connecting Mouse and Keyboard, 23

E

E5061B

Starting the E5061B, 26

starting the E5061B, 24

Environment requirements

Operating Environments, 17

Ventilation Requirement, 17

error correction

Temperature range, 17

F

Front Handles

how to install front handles, 20

how to install the handle kit, 21

H

Handle and rack-mount kit

How to Install the Rack-mount and Handle Kit, 21

Handle Kit

how to install the handle kit, 21

I

Initial registration, 23, 29

inspection

checking the shipment, 16

O

option

Option 1CM, 20, 21

Option 1CN, 20, 21

Option 1CP, 20, 22

P

power

disconnection from supply source, 27

power cable option, 24

power cable options, 24

Turning the Power ON and OFF, 26

Verification and Connection of Power Cable, 24

Verification of the Power Supply, 24

Professional Setup wizard, 35

R

rack-mount and handle kit

how to install the rack-mount and handle kit, 21

rack-mount kit

how to install the rack-mount kit, 21

S

shutdown

turning the power OFF, 26

system

installing rack mounting

flanges, 20

System Recovery

how to execute the factory recovery, 40

how to execute user recovery function, 44, 45

types of system recoveries, 40

This information is subject to change without notice.
© Keysight Technologies 2000-2017
Edition 1, December 2017



E5061-90027
www.keysight.com