

POPULAR MECHANICS

HEADS-UP DISPLAY COMPATIBLE WITH IOS AND ANDROID SMARTPHONES



PMAC100
User Guide

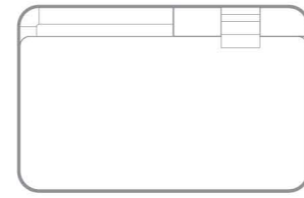
Warning

Failure to avoid the following potentially hazardous situations could result in an accident or collision resulting in death or serious injury.

Installation and Operation Warnings

- Place the HUD securely so it does not obstruct the driver's view of the road or interfere with vehicle operating controls, such as the steering wheel, the foot pedals or the transmission levers. Do not place the HUD in front of or above any airbag.
- When using the HUD, always use your best judgement and operate your vehicle in a safe and legal manner. Do not become distracted by the HUD and/or applications while driving, and always be fully aware of all driving conditions. Minimise the amount of time spent viewing the device screen while driving and use voice prompts where possible.
- Do not input destinations, change settings or access any functions requiring prolonged use of the HUD and/or applications while driving. Pull over in a safe and legal manner before attempting such operations.
- When navigating, carefully compare information displayed on the device to all available navigation sources, including road signs, road closures, road conditions, traffic congestions, weather conditions and other factors that may affect safety while driving. For safety reasons, always resolve any discrepancies before continuing navigation, and defer to posted road signs and road conditions.
- The HUD and/or application are designed to provide route suggestions. It is not a replacement for driver attentiveness and good judgement. Do not follow route suggestions if they suggest an unsafe or illegal maneuver or would place the vehicle in an unsafe situation.

What's in the box



Heads-Up Display (HUD)



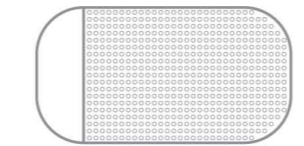
Cleaning cloth



Reflective screen protector



User guide



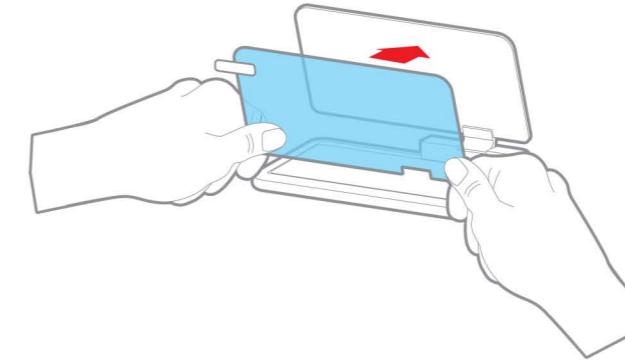
Non-slip mat

Set up the Heads-Up Display

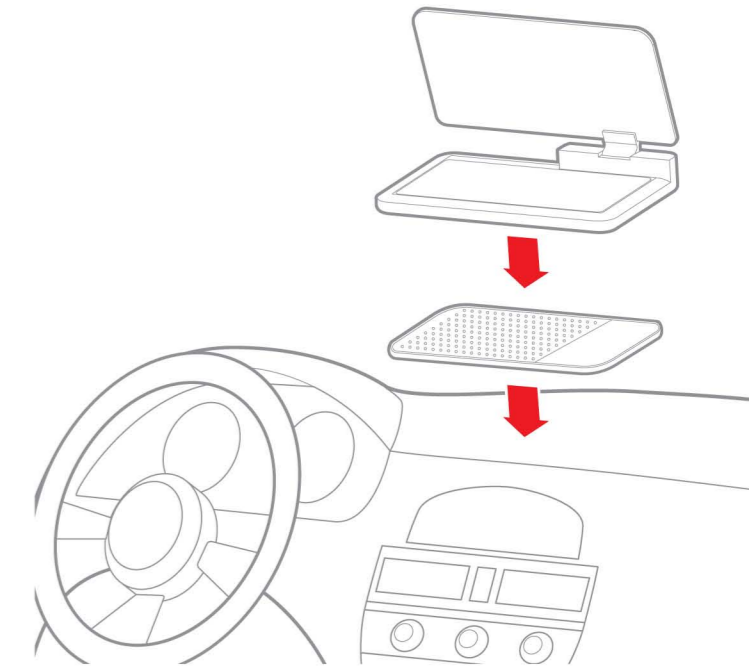
1. Peel off the protective film from both sides of the display.



2. Apply the reflective screen protector on the driver-facing side of the display as shown below.



3. Choose a level place on your car's dashboard, place the non-slip mat, and then place the Heads-Up Display (HUD) on the non-slip mat as shown below.



Download an app

1. Open your smartphone's App Store (iOS devices) or Google Play Store (Android).



App Store



Google Play

2. Search for and download a navigation app that supports HUD mode. Below are some suggested HUD-compatible apps.



HUDWAY Go™

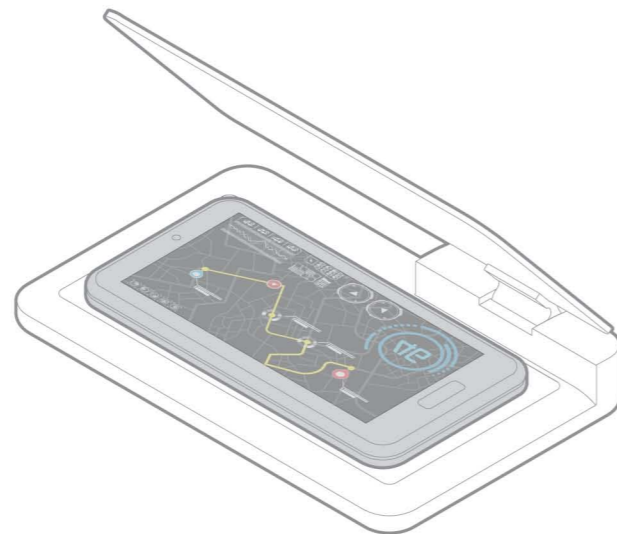


HUD Widgets™

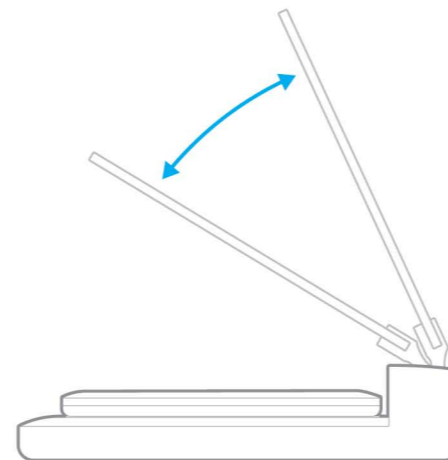
For other compatible apps search "HUD navigation" or "heads up navigation" with the app store's search tool.

How to use

1. Open the HUD-supporting app, make sure it is set to HUD mode, and then place your phone on the HUD's phone surface as shown below.



2. Adjust the display to a comfortable viewing angle.



Warranty

This product as supplied and distributed new by Southern Telecom, Inc. to the original consumer purchaser is warranted against defects in material and workmanship for a period of 90 days from your date of purchase ("Warranty"). In the unlikely event that this product is defective, or does not perform properly, you may within 90 days from your original date of purchase return it to the authorized service center for repair or exchange.

TO OBTAIN WARRANTY SERVICE:

- Log onto www.southern telecom.com and click on "Product Support". Use the support portal to create a ticket. Please allow 24-48 hours for a response.
- Provide proof of the date of purchase within the package (dated bill of sale).
- Prepay all shipping costs to the authorized service center, and remember to insure your return.
- Include a return shipping address (no P.O. Boxes), a telephone contact number, and the defective unit within the package.
- Describe the defect or reason you are returning the product.

Your product will be repaired or replaced, at our option, for the same or similar model of equal value if examination by the service center determines this product is defective. Products received damaged as a result of shipping will require you to file a claim with the carrier.

The shipping address of the authorized service center is:

Southern Telecom, Inc.
Customer Service Dept. 36
c/o Southern Telecom
400 Kennedy Drive
Sayreville NJ 08872

Legal information

Southern Telecom, Inc. © 2017 All Rights Reserved.

Popular Mechanics is a trademark of Hearst Communications, Inc.

Apple is a registered trademark of Apple Inc., registered in the U.S. and other countries.

Android, Google Play and the Google Play logo are trademarks of Google Inc.

All other trademarks and trade names are those of their respective owners.

Specifications:

- Supports smartphones up to 6"
- Product size: 150x95x20mm
- Product weight: 100g