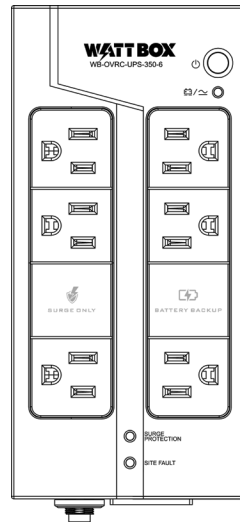


# WATT BOX™

**WB-OVRC-UPS-350-6**



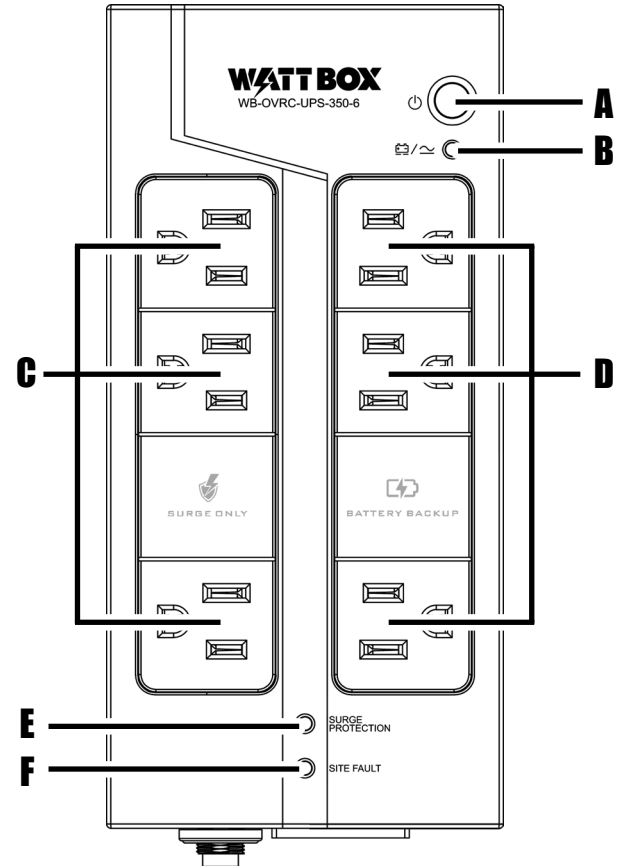
## QUICK START GUIDE

# BOX CONTENTS

- WattBox UPS
- IEC power cord
- 4 × rubber feet

# FRONT PANEL

- A. AC Power Switch.
- A short press of less than 1 second turns **on** the battery backup outlets (item D).
  - When battery backup is on and the alarm is sounding, a short press (less than 1 second) mutes the alarm sound until the next AC power loss.
  - A long press of at least 3 seconds turns **off** power to the outlets with battery backup (the surge-only outlets remain powered).
- B. Power Indicator LED: Tracks incoming power. See “LED Indicators” on page 6 for details.
- C. Outlets: These are surge only, and have no battery backup.
- D. Outlets with Battery Backup.
- E. Surge Protection Indicator LED: Tracks the status of surge protection. See “LED Indicators” on page 6.
- F. Site Fault Indicator LED: This shows red when the system is not grounded. See “LED Indicators” on page 6.

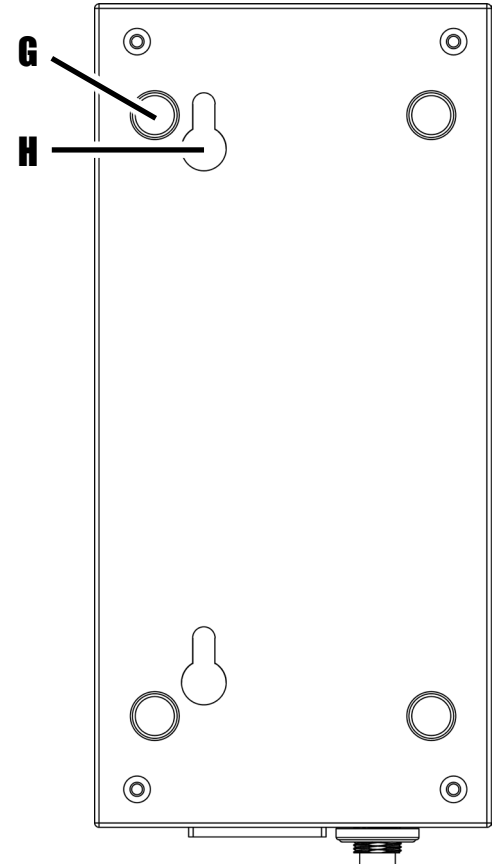
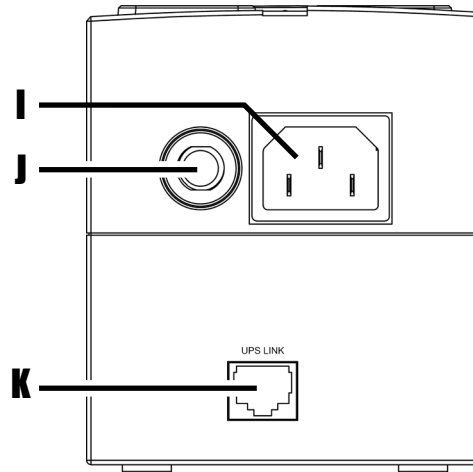


## REAR PANEL

- G. Feet.
- H. Mounting Keyholes.

## SIDE PANEL

- I. Power Inlet: Detachable power cord outlet for 3 prong IEC power cord.
- J. Circuit Breaker Reset Button: Press this button to restart the WattBox after an overcurrent condition causes it to shut down to protect your gear.
- K. UPS Link: For connection to an OvrC-enabled Wattbox power conditioner.



# INSTALLATION

The 350VA UPS is designed to sit on a desk or floor, or be installed in a structured wiring can.

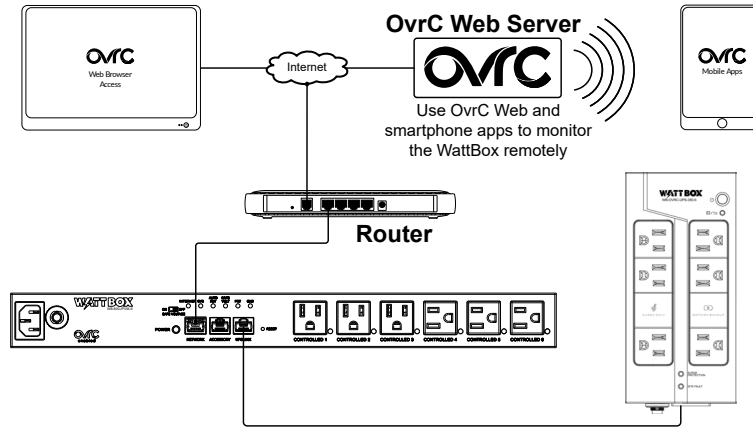
The slots on the back that can also be used to mount it vertically on a wall. Drill two holes, 12cm apart and aligned on a stud in the wall.

## Connections and setup

This UPS is OvrC enabled. To unlock the UPS features in OvrC, you must connect it to an IP-enabled WattBox power conditioner (e.g. WB-800 series) as shown.

Plug an Ethernet patch cable between the IP WattBox UPS Link and the UPS link of the UPS (page 3, item K). **Caution:** The UPS link must be connected **before** applying power to the IP-enabled WattBox power conditioner.

Plug in the IEC power cord (page 3, item I).



# CLAIMING THE WATTBOX ON OVRC

When connected to an IP-enabled WattBox power conditioner, this unit adds additional features to the power conditioner. For example, the power conditioner can show battery health and allow for load shedding (when in battery mode). If you are not familiar with OvrC, visit OvrC.com. To find training for OvrC, log in to SnapAV.com, click on the **Training** tab, and then launch Snap University.

## Finishing Setup with OvrC

1. Ensure the UPS is connected to an IP-enabled WattBox power conditioner via the UPS Link.
  2. Log in to your OvrC account and view the IP-enabled WattBox power conditioner to see the added features that the UPS provides.
- You can now complete setup through OvrC.

## LED INDICATORS

The bank of LED indicator lights give you key information about the health of your system.

AC Mode / Battery Backup	Off	Battery backup outlets are turned off.
	Green (Solid)	Unit is operating from AC power.
	Green (Flashing every 10 seconds)	Unit is operating from battery power.
	Green (Flashing every second)	Unit is operating from battery power, and the battery is low.
Surge Protected	Green	The unit has power and all outlets are surge protected.
	Off	The unit does not have AC power applied, or the MOVs have been consumed during a surge event and disconnected the outlets.
Site Fault	Off	Incoming AC outlet is grounded.
	Red	Incoming AC outlet is not grounded and requires inspection by an electrician.

## AUDIBLE ALARMS

The UPS has an audible beep that warns you about the health of your system.

Sounds every 10 seconds	AC power is not available, and the unit is operating on battery backup. You can mute this alarm by pressing the power button for less than 1 sec. You can use OvrC to disable the beeps if desired.
Sounds every second	Low battery.
Sounds continuously	Power overload detected. To resolve this issue, remove the excess load, and turn the unit off and on with the power button to reset it.

## TROUBLESHOOTING

Symptom	Possible Cause	Remedy
The UPS behaves as if power is out but power at the outlet is normal.	The power cord is loose or damaged.	Check the power cord connection to the outlet and to the UPS.
The UPS is always on battery mode.	Power cord loose.	Seat the power cord firmly.
Battery backup ends too quickly.	Battery voltage is too low.	Charge the battery at least 6 hours.
	Overload	Remove some unnecessary loads. Before reconnecting equipment, please verify that the load matches the UPS capability specified in the specs.
	The battery has failed.	The battery is not serviceable and the entire UPS must be replaced.

# IMPORTANT SAFETY INSTRUCTIONS / CONSIGNES DE SÉCURITÉ IMPORTANTES

Read and observe the following safety points at all times.

## NOTICE / AVIS

For indoor use only. Internal components are not sealed from the environment. The device can only be used in a fixed location such as a telecommunication centre, or a dedicated computer room. When you install the device, ensure that the protective earthing connection of the socket-outlet is verified by a skilled person. Suitable for installation in Information Technology Rooms in accordance with Article 645 of the National Electrical Code and NFPA 75.

*Pour l'utilisation à l'intérieur seulement. Les composants internes ne sont pas isolés de l'environnement. L'appareil ne peut être utilisé que dans un lieu fixe, tel qu'un centre de télécommunication ou une salle informatique dédiée. Lors de l'installation de l'appareil, le raccordement à la terre de protection dans la prise de courant doit être vérifié par un professionnel. Convient pour l'installation dans les salles informatiques conformément à l'article 645 du code national de l'électricité (NEC) et à la NFPA 75.*

Only use brackets/attachments/accessories specified by the manufacturer. Do not place the device in an unstable position where it might fall and cause injuries. This equipment is not suitable for use in locations where children are likely to be present.

*Utilisez seulement les supports / accessoires spécifiés par le fabricant. Ne placez pas l'appareil dans une position instable où il pourrait tomber et provoquer un accident. Cet équipement n'est pas approprié pour des endroits où des enfants sont probablement présents.*

Do not cover this device with a cloth. Do not install it on a carpet or rug.

*Ne couvrez pas cet appareil avec un chiffon. Ne l'installez pas sur un tapis.*

## CAUTION – Potential Injury / ATTENTION – Blessures potentielles

The main outlet that supplies the UPS shall be installed near the UPS and shall be easily accessible. Do not use this product with extension cords, multioutlet power strips, or multioutlet extenders. The power capacity of these accessories can be overloaded by this product and may result in a risk of fire, or property damage.

*La prise électrique qui alimente l'UPS (ASI) doit être installée près de l'UPS et doit être facilement accessible. N'utilisez pas ce produit avec des rallonges électriques, des multiprises, ou des rallonges multiprises. Ce produit peut surcharger la capacité électrique de ces accessoires et en conséquence avoir des risques d'incendie ou des dégâts matériels.*

## WARNING – Power Sources, Grounding, Polarization / AVERTISSEMENT – Sources d'alimentation électrique, mise à la terre, polarisation

The UPS must be connected to a grounded electrical outlet. This plug is designed to be inserted into a NEMA 5-15 (three-prong grounded) outlet only. Do not force the plug into an outlet that is not designed to accept it. Never dismantle the plug or to alter the power cord, and do not attempt to

defeat the grounding feature by using a 3-to-2 prong adapter. If you have questions about grounding, consult your local power company or a qualified electrician.

*L'UPS doit être branchée à une prise électrique connectée à la terre. Ce connecteur est conçu pour être inséré dans une prise NEMA 5-15 (mise à la terre à trois broches) seulement. Ne forcez pas le connecteur dans une prise qui n'est pas conçue pour l'accepter. Ne jamais démonter la prise ou modifier le cordon d'alimentation. Ne pas tenter d'enlever la mise à la terre par un adaptateur de 3 vers 2 broches. Si vous avez des questions sur la mise à la terre, consultez votre compagnie d'électricité locale ou un électricien qualifié.*

This Wattbox requires a properly grounded outlet for safety. If you're not sure if your home's electrical wiring is properly grounded, have it checked by a qualified electrician. If a rooftop devices such as a satellite dish connects to the WattBox, ensure that the device's wires are also properly grounded.

*Pour cette Wattbox, il faut avoir une prise correctement mise à la terre pour des raisons de sécurité. Dans le cas vous ne savez pas si le câblage électrique de votre maison est correctement mis à la terre, contactez un électricien qualifié pour la vérification. Si un périphérique de toit tel qu'une antenne parabolique se connecte à la WattBox, assurez-vous que les câbles du périphérique sont aussi correctement mis à la terre.*

### **WARNING – Liquid: Avoiding Electrical Shocks / AVERTISSEMENT - Liquide: Éviter les chocs électriques**

Do not operate the WattBox if liquid of any kind is spilled onto or inside the unit. Do not operate it near rain or water, even water that is contained (e.g., bathtub or sink).

*Ne pas utiliser la WattBox dans le cas si du liquide, n'importe quel type, est renversé à l'extérieur ou à l'intérieur de l'appareil. Ne l'utilisez pas près de la pluie ou de l'eau, même de l'eau contenue (par exemple, une baignoire ou un lavabo).*

### **WARNING – Power Cord Safety / AVERTISSEMENT - Sécurité du cordon d'alimentation**

Do not place the power cord near areas with heavy foot traffic (e.g., hallways). Do not create a trip hazard with the power cord.

If the power cord's protective jacket rips or frays, exposing the internal wiring or shielding, disconnect it from the power source and replace the power cord immediately. See the warranty section of the owner's manual for details.

*Ne placez pas le cordon d'alimentation près de zones de haute circulation piétonnière (par exemple, des couloirs). Ne créez pas de risque de chute avec le cordon d'alimentation. Si l'enveloppe de protection du cordon se déchire, comme le câblage interne ou le blindage est exposé, débranchez-le de la source d'alimentation et remplacez immédiatement le cordon. Voyez la section de garantie dans le manuel pour plus de détails.*

### **WARNING – No User Serviceable Parts Inside / AVERTISSEMENT - Aucune pièce interne réparable par l'utilisateur**

If the WattBox is not operating properly, do not remove any part of the unit (cover, etc.) for repair. Unplug the unit and consult the warranty section of the owner's manual.

*Si la WattBox ne fonctionne pas correctement, ne retirez aucune part de celle-ci (boîtier, etc.) pour réparation. Débranchez l'appareil et consultez la section de garantie dans le manuel.*



## **CAUTION – Exposure to Heat / ATTENTION - Exposition à la chaleur**

Do not expose the WattBox to direct sunlight or place it near wall heaters, space heaters, or in an enclosed space prone to temperature increase. Do not use the device in a confined, poorly-ventilated location; this can overheat the unit, possibly even causing a fire. If used in a small space other than an EIA-standard rack, ensure that there is adequate space around the device.

*N'exposez pas la WattBox directement au soleil et ne la placez pas près des radiateurs muraux, des radiateurs indépendants ou dans un espace clos avec une augmentation possible de la température. N'utilisez pas l'appareil dans un endroit confiné et mal ventilé; il pourrait surchauffer l'appareil et même provoquer un incendie. Dans un petit espace autre qu'un rack avec EIA standard, assurez-vous qu'il y a suffisamment d'espace autour de l'appareil.*

## **CAUTION – Proper Cleaning / ATTENTION - Nettoyage approprié**

In general, the only cleaning necessary for is a light dusting. Unplug the WattBox UPS from the wall outlet and switch off the battery powered outlets before cleaning it. Do not use liquid or aerosol cleaners.

*En général, le seul nettoyage nécessaire est un peu dépeussierage. Débranchez l'onduleur WattBox de la prise murale et éteignez les prises alimentées par batterie avant de le nettoyer. N'utilisez pas de nettoyeurs liquides ou en aérosol.*

## **FCC WARNING / AVERTISSEMENT DE LA FCC**

**WARNING!!** Changes or modifications to this unit not expressly approved by the party responsible for compliance could void the user's authority to operate the equipment.

**AVERTISSEMENT !!** Toute modification sur cet appareil sans l'approbation par la partie responsable pour la conformité pourrait annuler l'autorité de l'usage.

This equipment has been tested and found to comply with the limits for a Class B Digital Device, pursuant to Part 15 of the FCC Rules. These limits are designed to provide reasonable protection against harmful interference in residential installation. This equipment generates, uses and can radiate radio frequency energy and, if not installed and used in accordance with the instruction manual, may cause harmful interference to radio communications. However, there is no guarantee that interference will not occur in a particular installation. If this equipment does cause harmful interference to radio or television reception, which can be determined by turning the equipment off and on, the user is encouraged to try to correct the interference by one or more of the following measures:

- Reorient or relocate the receiving antenna.
- Increase the separation between the equipment and receiver.
- Connect the equipment into an outlet on a circuit different from that to which the receiver is connected.
- Consult the dealer or an experienced radio/TV technician for help.

*Cet équipement a été testé et déclaré conforme aux limites applicables aux appareils numériques de classe B, selon la section 15 du règlement de la FCC.*

Ces limites sont pour fournir une protection raisonnable contre les interférences nuisibles dans les installations résidentielles. Cet équipement génère, utilise et peut émettre de l'énergie de fréquence radio. S'il n'était pas installé et utilisé selon le manuel d'utilisation, il y aurait des interférences nuisibles aux communications radio. Cependant, rien ne garantit que des interférences ne se produiront pas dans une installation particulière. Si cet équipement provoque des interférences nuisibles à la réception de radio ou de télévision, déterminé par éteindre et rallumer l'équipement, l'utilisateur est invité de corriger l'interférence par l'une ou plusieurs des mesures suivantes:

- Réorientez ou déplacez le récepteur antenne.
- Augmentez la distance entre l'équipement et le récepteur.
- Branchez l'équipement sur une prise d'un circuit différent de celui auquel le récepteur est connecté.
- Consultez le dealer ou un technicien avec l'expérience en radio / télévision pour obtenir de l'aide.

Notice: (1) An unshielded-type power cord is required in order to meet FCC emission limits and also to prevent interference to the nearby radio and television reception. It is essential that only the supplied power cord be used. (2) Use only shielded cables to connect I/O devices to this equipment.

Avis: (1) Un cordon d'alimentation de type non blindé est nécessaire pour respecter les limites d'émission de la FCC et éviter les interférences de réception entre la radio et la télévision. Il est essentiel que seul le cordon d'alimentation fourni soit utilisé. (2) Utilisez seulement des câbles blindés pour connecter les appareils I/O à cet équipement.

Note: THE MANUFACTURER IS NOT RESPONSIBLE FOR ANY RADIO OR TV INTERFERENCE CAUSED BY UNAUTHORIZED MODIFICATIONS TO THIS EQUIPMENT. SUCH MODIFICATIONS COULD VOID THE USER'S AUTHORITY TO OPERATE THE EQUIPMENT.

Remarque: LE FABRICANT NE PEUT ÊTRE TENU RESPONSABLE DES INTERFÉRENCES RADIO OU TV À CAUSE DES MODIFICATIONS NON AUTORISÉES DE CET ÉQUIPEMENT. DE TELLES MODIFICATIONS POURRAIENT ANNULER L'AUTORISATION DE L'UTILISATEUR D'UTILISER L'APPAREIL.

The Class B digital apparatus meets all requirements of the Canadian Interference-Causing Equipment Regulation.

Cet appareil numérique de la class B respecte toutes les exigences du Règlement sur le matériel brouilleur du Canada.



## **WARNING**

This product can expose you to chemicals including lead, which is known to the State of California to cause birth defects or reproductive harm. For more information go to [www.P65Warnings.ca.gov](http://www.P65Warnings.ca.gov).

# **SNAPAV SURGE PROTECTOR CONNECTED EQUIPMENT PROTECTION POLICY**

**CAUTION:** Audio/video, computer and/or telephone system installations can be very complex systems of interconnected components. A single protector may not be able to completely protect complex installations. In those cases, employ a systemic approach using multiple protectors. Systemic protection requires professional design. AC power, satellite cables, CATV cables, or telephone/network lines entering the system that do not pass through this surge protector render the SnapAV connected equipment protection policy null and void. For additional information on protecting your system, please contact SnapAV before installing the surge protector.

This policy is valid only in the United States and Canada. It is the policy of SnapAV that it will, in its sole discretion, replace, pay to replace at fair market value, or pay to repair, up to the dollar amount specified, equipment that is damaged by an AC power, cable, telephone, or lightning surge while connected to a properly installed SnapAV surge protector. SnapAV must determine that the surge protector shows signs of surge damage or is operating outside of design specifications, relative to its surge protection capability, and under all of the circumstances failed to protect your connected equipment. This policy is subject to the conditions below:

## **PROOF OF PURCHASE REQUIRED**

SnapAV's connected equipment policy extends to the original purchaser of the SnapAV product only and is non-transferable.

Original purchase receipts must accompany any product return or claim for connected equipment damage.

## **PROPER INSTALLATION REQUIRED**

SnapAV AC protectors must be directly plugged into a properly grounded 3-wire AC outlet. Extension cords, non-grounded two prong adapters, or other non-SnapAV surge products must not be used. Building wiring and other connections to protected equipment must conform to applicable codes (NEC or CEC). No other ground wires or ground connections may be used. All wires (e.g., AC power lines, telephone lines, signal/data lines, coaxial cable, etc.) leading into the protected equipment must first pass through a single SnapAV protector designed for the particular application. The protector and the equipment to be protected must be indoors in a dry location, and in the same building. SnapAV installation instructions and diagrams must be followed.

## **NOTIFICATION REQUIRED**

You must notify SnapAV within fourteen days of any event precipitating a request for product replacement or payment for connected equipment damage. A return authorization (RA) number must first be obtained from the SnapAV Customer Service Department at [www.snapav.com/support](http://www.snapav.com/support) before returning the protector to SnapAV. At this time, you must notify SnapAV if you believe you have a claim for damaged connected equipment.

Once you obtain an RA number, please mark the number on the bottom of the unit and pack it in a shipping carton/box with enough packing material to protect it during transit. The RA number must also be clearly marked on the outside of the carton. Ship the unit to SnapAV. Please note that you are responsible for any and all charges related to shipping the unit to SnapAV.

# **WARRANTY**

## **2-Year Limited Warranty**

This SnapAV® product has a 2-Year Limited Product Warranty. This warranty includes parts and labor repairs on all components found to be defective in material or workmanship under normal conditions of use. This warranty shall not apply to products which have been abused, modified, or disassembled. Products to be repaired or replaced under this warranty must be returned to SnapAV or a designated service center with prior notification and an assigned return authorization number (RA). Contact technical support for an RA number.

Once you obtain an RA number, please mark the number on the bottom of the unit and pack it in a shipping carton/box with enough packing material to protect it during transit. The RA number must also be clearly marked on the outside of the carton. Ship the unit to SnapAV. Please note that you are responsible for any and all charges related to shipping the unit to SnapAV.

## **WARRANTY LIMITATION:**

SnapAV products not purchased directly from SnapAV or authorized SnapAV dealers or authorized distributors are excluded from above warranties.

Version 190416-1211