



Cisco Advanced Web Reporting Overview

December, 2015

Advanced Web Reporting Highlights

- Massively Scalable Reporting Tool with Same Reporting Format and Functionality as On-box and Security Management Appliance Reporting
- Running on Customer-Provided Server
- Sold and Supported by Cisco
- Competitively-Priced Single-Source (Web Security Appliance logs only) License

Advanced Web Reporting

Alternative Web Reporting Solution for Scalability and Specific Use Cases

Scalability

>25,000 Users
Extended Storage

Use Cases

Group-Based Reporting
Enhanced L4TM Reports
Historical Data Import

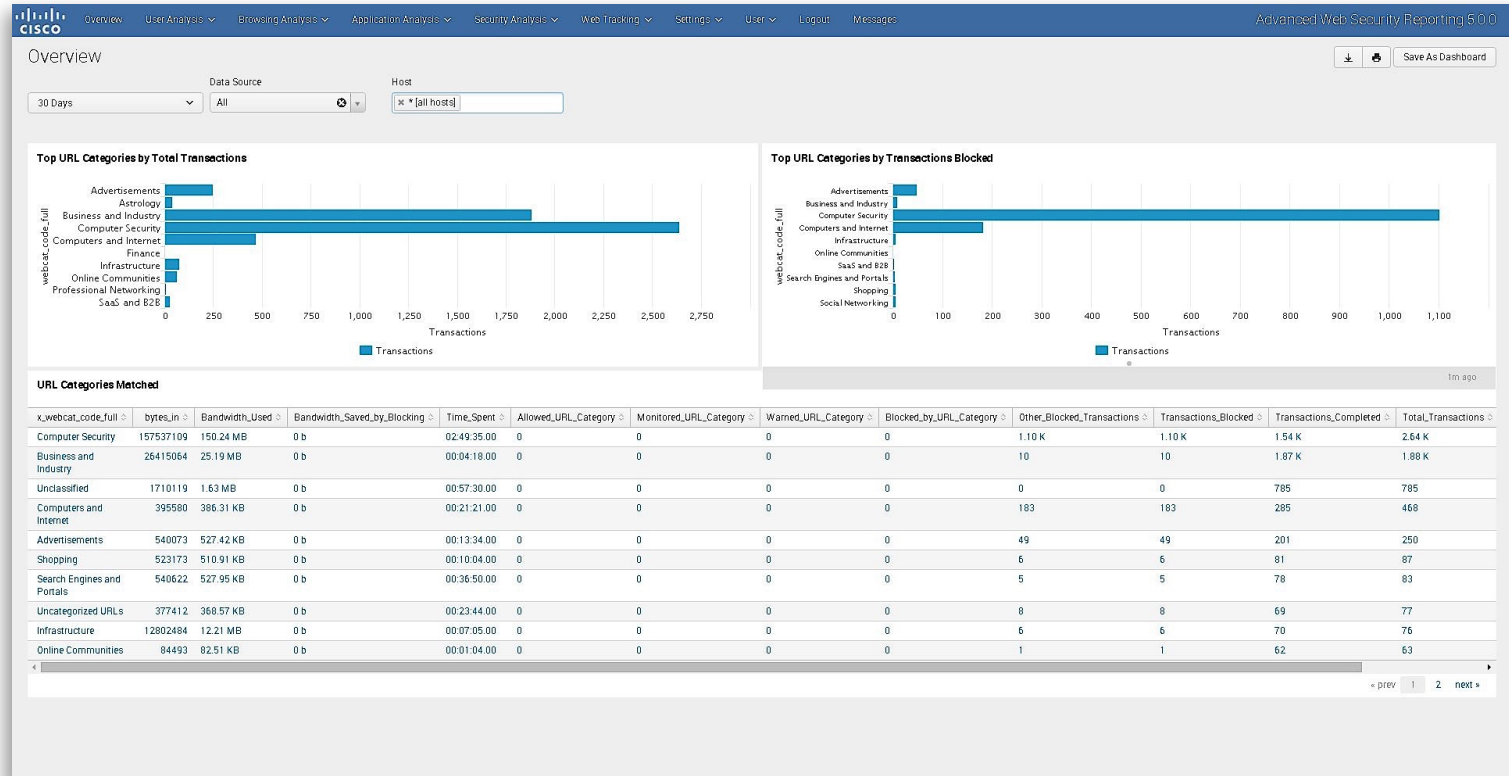
Advanced Web Reporting:

Same Reports as On-Box, Scalable for Large Customers

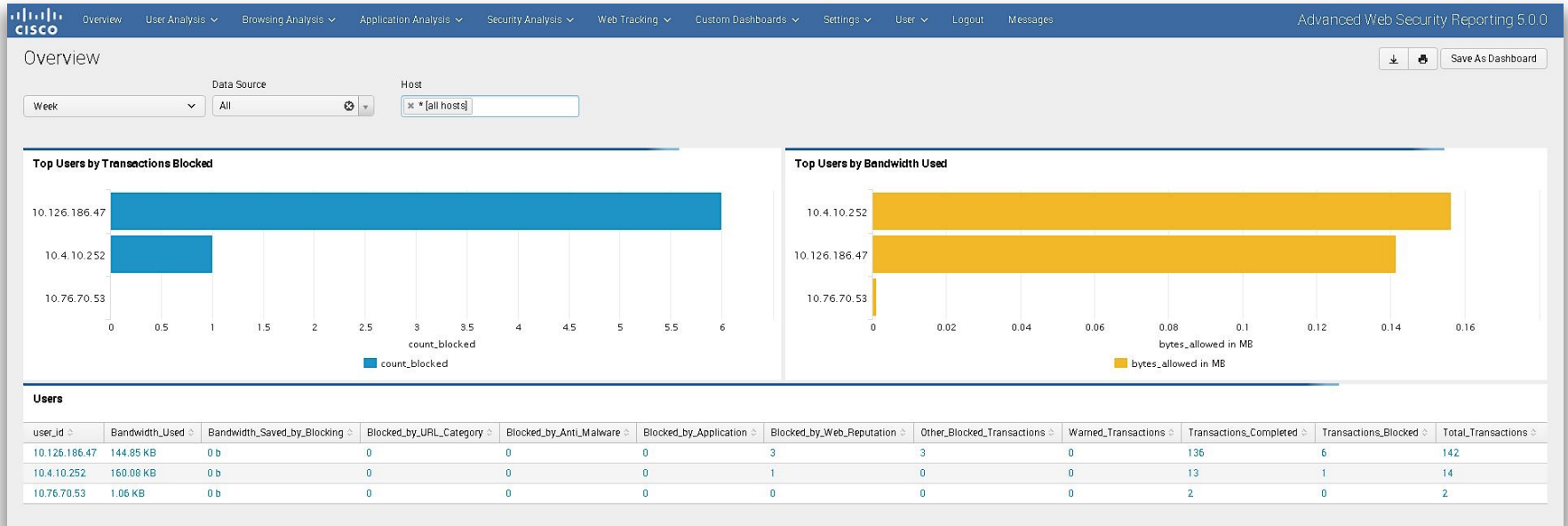
Acceptable Use	Security
Overview	Anti-Malware
Users	Client-Malware Risk
Websites	Web Reputation Filters
URL Categories	L4 Traffic Monitor
Application Visibility	Reports by Location
	SOCKS

- All Reports have Drill-Down Capabilities to View Individual Transactions

Same Report Format as On-Box



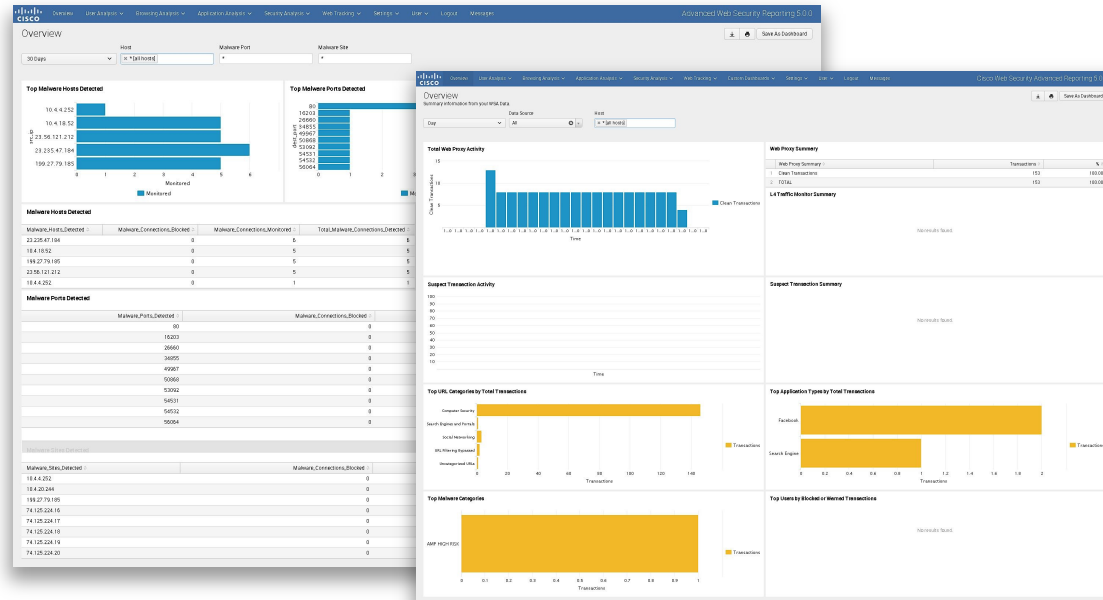
Directory Group-Based Reporting



- Roles can be Configured to see Reports only for Specific Directory Groups

Accurate Metrics for Management

- WSA: On-Box Reports
- SMA: Centralized Reports (aggregated from WSAs)



Understand Business Trends

Measure Productivity

Analyze Security Threats

Plan for the Future

Reports for Variety of Audiences



Human Resources and Legal

- Threat Analysis
- Forensics
- Security Policy Control



IT Security

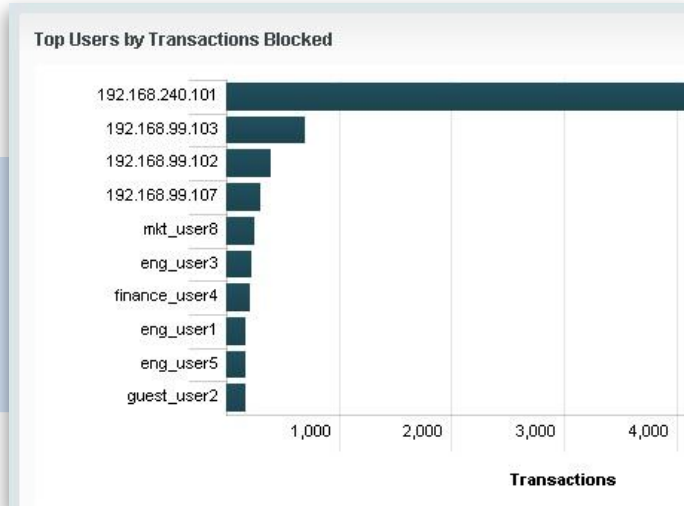
- Investigations
- Measure Productivity
- Acceptable Use Policy Enforcement



Network Operations

- Bandwidth Policy Control
- Capacity Planning

Drill Down High Level Reports for Transaction-Level Detail



```
1307376909.913 55191 192.168.99.111 TCP_MISS/200 238 GET  
http://0.93.channel.facebook.com/x/2256199771/601880089/true/p_100000775595612=0 "LAB-DEMO\scamarda@AD"  
DIRECT/0.93.channel.facebook.com text/plain ALLOW_WBRS_11-DefaultGroup-Authenticate-DefaultGroup-NONE-NO  
<IW_snet,6.1,"-","-","-","-","-","-","-","-","-","-","-","-","-","-","-","-","-","-","-","-","-","-","-","-","-"  
[Local],"-","-"] - -  
host=wsa.lab | sourcetype=wsa_accesslogs | source=/var/log/wsa.lab/accesslogs/aclog_@20110606T111452.s.gz | dvc_jp=192.168.99  
| ac_tag=ALLOW_WBRS_11-DefaultGroup-Authenticate-DefaultGroup-NONE-NONE-DefaultGroup | department=-
```

High Level:

- Top Applications
- Top Websites
- Top Categories
- Top Users

Granular:

- Detailed Info for Each Web Transaction

Reporting Use Case



Human Resources
Wants to:

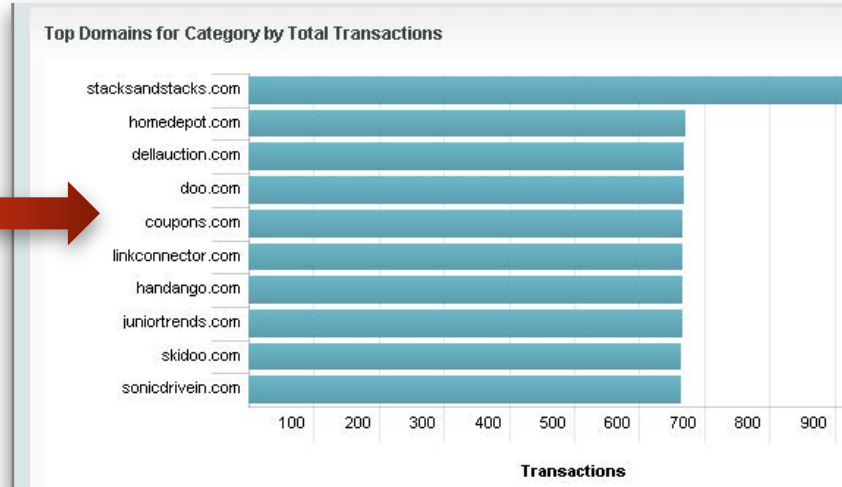
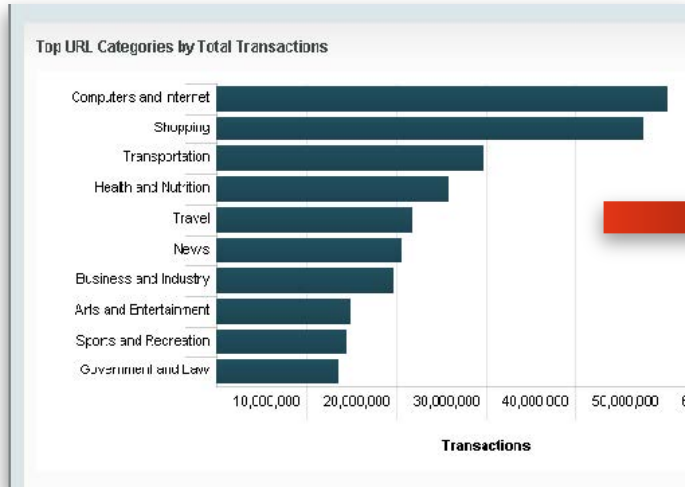


Observe Web Usage Trends



Make Policy Changes to Improve Productivity

Generate Reports, Drill Down for More Detail



Top URL Categories:

- Shopping is Second Highest Category

Drill Down:

- Top Domains in Shopping Category

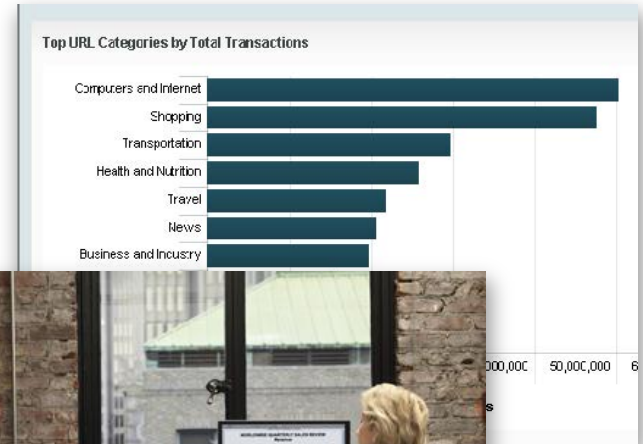
Take Action with Policy Changes, Measure Success

HR Implements New Policy:

- Block Top Shopping Websites Identified in Reports

Measure Success of Policy Change Using WSA Reports:

- Compare Usage of Non-productive Websites Before and After
- Calculate Savings from Lowered Bandwidth Usage



Tracking Use Case

Human Resources and Legal are conducting an investigation of a user's web activity in the past 30 days.



Transaction Records for Forensic Investigation

User ID or Client IP

Website

Transaction Type

<< prev 1 2 3 4 5 6 7 8 9 10 next >>

	_time ↓	Bandwidth ↓	Disposition ↓	Website ↓	duc_ip ↓	host ↓	user_id ↓	x_webcat_code_full ↓
1	7/19/11 6:15:42.409 PM	1.72 KB	-	digitalhermit.com	192.168.248.101	wsa3	sales_user1	Online Communities
2	7/19/11 2:15:13.346 PM	64.19 KB	- DEFAULT - CASE	infospace.com	192.168.248.101	wsa3	sales_user1	Reference
3	7/19/11 2:08:03.229 PM	758 b	DEFAULT - CASE	afcyhf.com	192.168.248.101	wsa3	sales_user1	Computers and Internet
4	7/19/11 2:03:10.545 PM	230.04 KB	DEFAULT - CASE	sportbet.com	192.168.248.101	wsa3	sales_user1	Gambling
5	7/19/11 2:00:09.352 PM	185.96 KB	DEFAULT - CASE	successfuloffice.com	192.168.248.101	wsa3	sales_user1	Business and Industry
6	7/19/11 1:58:06.676 PM	256.64 KB	DEFAULT - CASE	chapmanchoice.com	192.168.248.101	wsa3	sales_user1	Business and Industry
7	7/19/11 1:55:34.190 PM	146.48 KB	DEFAULT - CASE	heartlandbc.org	192.168.248.101	wsa3	sales_user1	Health and Nutrition
8	7/19/11 1:52:21.653 PM	17.49 KB	DEFAULT - CASE	arcwebservices.com	192.168.248.101	wsa3	sales_user1	Computers and Internet
9	7/19/11 1:47:36.277 PM	1.72 KB	-	newschannel8.com	192.168.248.101	wsa3	sales_user1	News
10	7/19/11 1:43:36.445 PM	25.18 KB	DEFAULT - CASE	firstauto.com	192.168.248.101	wsa3	sales_user1	Business and Industry
11	7/19/11 1:42:35.049 PM	758 b	DEFAULT - CASE	lduhtp.net	192.168.248.101	wsa3	sales_user1	Advertisements
12	7/19/11 1:39:47.252 PM	88.80 KB	ALLOW - WBERS: 8.9	webmd.com	192.168.248.101	wsa3	sales_user1	Health and Nutrition
13	7/19/11 1:35:30.472 PM	882.35 KB	ALLOW - WBERS: 6.5	adp.com	192.168.248.101	wsa3	sales_user1	Business and Industry
14	7/19/11 1:32:01.007 PM	869.36 KB	DEFAULT - CASE	consumerwatchdog.org	192.168.248.101	wsa3	sales_user1	Health and Nutrition
15	7/19/11 1:27:11.940 PM	506.71 KB	DEFAULT - CASE	myvideo.de	192.168.248.101	wsa3	sales_user1	Streaming Media
16	7/19/11 1:25:53.297 PM	203.94 KB	DEFAULT - CASE	mgwitd.com	192.168.248.101	wsa3	sales_user1	Shopping

- Easily get Transaction History by Searching for a Username
- Details Shown in Transaction History can be Customized

16+ Billion
Transactions
Stored

Instant
Report Generation

Fast
Web Tracking
Search



CISCO

TOMORROW starts here.