

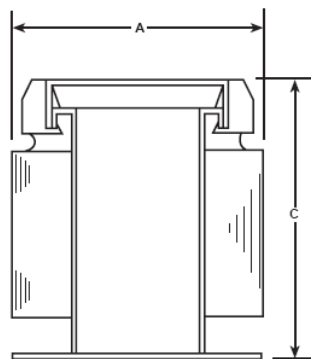
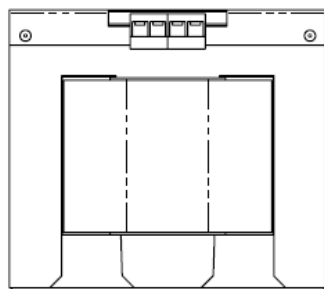
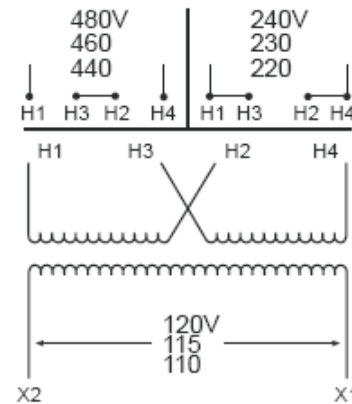
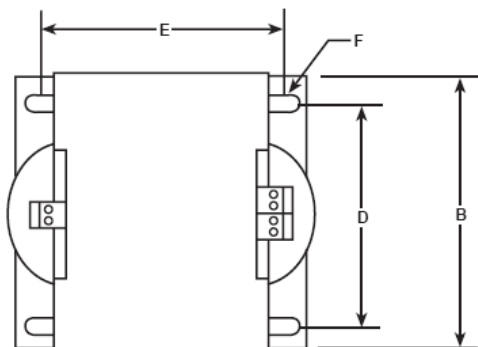
Prim/Sec Fuse Block

**PL-79906**

**ACME ELECTRIC**

Type No.

Date: Feb 16, 2011



VA	CATALOG NUMBER	VOLTAGE		WIRING DIAGRAM	WEIGHT	PHASE	FREQ.
		HIGH	LOW				
100	<b>FS-2-1000</b>	480 x	120		26 Lbs	1φ	50/60

TYPICAL PERFORMANCE DATA

Winding Temp:	80°C	Standard	UL/CSA/	Markings:	CE	No Load Losses	
Insulation:	130°C	<b>Industrial Control Transformer</b>				Full Load Losses	
Windings:	CU						

A	B	C	D	E	F			
4.76	6.75	6.03	5.75	2.86	.31x.50			

						<b>A</b>	PRINTS TO	<b>CONTROL 7</b>
--	--	--	--	--	--	----------	-----------	------------------