

Aura:fit software instruction guide

Version 4.3

Version 4.3 supports the following product families;

Vista Basic, Vista Basic+, Vista, Vista N, Vista T, Vista D and Vista DX

For the following features in Aura:fit, specific fitting guides are available:

Automatic REM

Remote adjust

Table of contents

NOAH and standalone versions	2	Frequency Compression 2	25
Programming information	2	Fitting Advice	25
iCube /iCube II.....	2	Tinnitus Masker	26
NOAHlink / HI-PRO.....	2	Remote adjust	27
Noahlink Wireless.....	3	Configure Features	27
Tool bar icons.....	3	Sound Director	28
Quick View Pane	3	Input	28
Client tab	3	Wind Noise Manager / Wind Control.....	28
Connection tab.....	4	Pulse Protector 2.....	28
Alerts tab.....	4	Phase Canceller.....	29
Client View tab	4	Binaural Phone	29
Located beside Quick View pane area	4	Music Equalizer	29
myUnitron account.....	4	Automatic Controls	29
Recalculate	5	Smart Balance/Smart Balance SP/Smart Balance 2	30
Mute / unmute	5	Car with Speech Direction	30
Fitting Mode	5	Program Manager	30
Client menu	5	Feedback Optimization.....	31
Information	6	Automatic REM	32
Audiogram.....	7	End Fitting menu	32
RECD.....	8	HI Setup	32
REUG	8	Push Button.....	32
Importing RECD or REUG from NOAH	9	Multi-function button	33
Instruments menu	9	Push button / Rotary dial.....	35
Selection	9	Lever / dial	35
Initial Configuration	10	IIC / Micro CIC remote.....	36
Simulate hearing instrument(s)	11	Bluetooth	36
Technology Change	11	TV Connector.....	36
Acoustics.....	12	Volume Settings.....	37
BTE and RIC instruments	12	Start up Settings	37
Custom instruments.....	12	Data logging	37
Accessories	13	Program Toggle Exceptions.....	37
Remote Control / Remote Control 2.....	13	Beeps	37
PartnerMic	13	Beep Setup.....	38
uDirect 2 / uDirect 3	13	Beep Enabling.....	38
uStream	15	Trial Duration.....	38
Hearing Remote app	16	Remote adjust Setup.....	39
Pre-Fitting	16	Fitting Summary	39
Super Power pre-sets (if applicable)	16	Data logging menu	40
Fitting Formula	17	Overview	40
Processing Strategy.....	17	Usage (Data logging)	40
Tinnitus Masker Strategy.....	17	Capture All.....	41
Frequency Compression Strategy.....	17	Curve display options	41
In Situ.....	17	Main Menu	42
Fitting menu	18	File	42
Tuning.....	18	Forms.....	43
Adaptation Manager (for Vista T and older products).....	19	Hearing Instrument.....	43
Adaptation Manager (Vista D and newer products)	20	Options	43
Occlusion Manager	22	Preferences	43
Bass Enhancer.....	22	iCube Configuration	45
Soft / Mod / Loud Controls.....	22	Accessory Firmware Update.....	45
MPO / Gain / CR Controls	23	Change uDirect 2 Language Pack	45
App Equalizer	24	Help.....	45
Frequency Compression.....	24		

NOAH and standalone versions

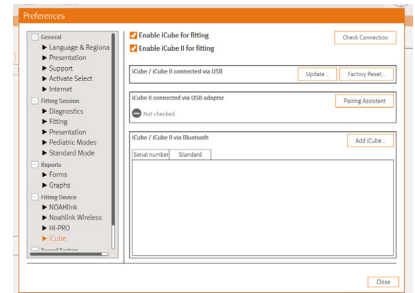
Aura:fit fitting software is available both as a NOAH module and as standalone software. The only difference with these versions is the client information storage. For the NOAH version, the fitting software relies on NOAH's database to save client specific information including audiogram. The standalone version does not use NOAH and contains its own client database.

Programming information

Prior to detecting the hearing instrument(s), choose your desired programming interface. Note: During programming hearing instrument controls, automatic program, accessories, Easy telephone, Auto DAI, audio streaming, **Bluetooth®** connectivity, and automatic microphone options are deactivated.

iCube /iCube II

- The original iCube will not detect hearing instruments on the Vista N, Vista T, Vista D or Vista DX platforms
- If using iCube/ iCube II for the first time, you will need to configure the fitting device. From the top menu select **Options > iCube Configuration** and follow the on-screen instructions.
- If using iCube/iCube II, insert batteries into the hearing instruments and close the battery door. Place hearing instruments on your client's ears and place the iCube/iCube II around your client's neck or place the hearing instruments inside the iCube/iCube II neck loop.



NOAHlink / HI-PRO

- If using NOAHlink or HI-PRO with BTE or RIC hearing instruments, open the battery door and insert the programming cable into the programming port. Connect the other end of the cable to the NOAHlink or HI-PRO.
- If using NOAHlink or HI-PRO with ITE hearing instruments, remove the battery door and insert the programming cable. Connect the other end of the cable to the NOAHlink or HI-PRO.

Note: BTE and RIC hearing instruments are initially fit to a 40 dB HL flat hearing loss configured for the left ear upon shipping. ITE hearing instruments are fit to the client's audiogram if supplied; otherwise, the devices are using a 40 dB HL flat hearing loss.

Note: For Vista micro CIC, all Vista N, Vista T 10A and Vista DX 312 and 10a Omni custom products, ensure you are using the white programming cable to avoid damaging the hearing instrument.

Note: Vista Basic and Vista DX 312 and 10a Omni hearing instruments are non-wireless and can be programmed with NOAHlink or HI-PRO.

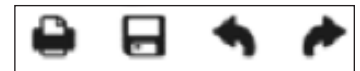
Noahlink Wireless

- To switch the units on, if the units have no battery door, press and hold the lower part of the button on each of the hearing instruments for 3 seconds until the indicator light changes temporarily to solid green. For units with a battery door, insert batteries into the hearing instruments and close the battery doors. This will also place the units in pairing mode, which lasts for 3 minutes.
- If connecting to hearing instruments that are not saved in the current session, the hearing instruments must be in pairing mode.
- If connecting to hearing instruments that are already saved in the current session, the hearing instruments do not have to be in pairing mode.

Note: All bluetooth instruments are wireless and can only be programmed using Noahlink Wireless.

Tool bar icons

There are tool bar icons available at the top right hand corner of each screen.



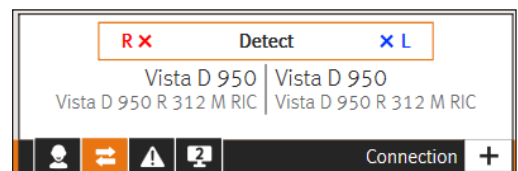
Print icon: opens a window that shows the documents available such as the Fitting Reports and the Getting Started Guides (hearing instruments and accessories, if applicable). The client's language for the Getting Started Guides can be selected. The selected documents can be previewed, printed or saved from this window.

Save icon: saves the current fitting information. Choose from Save to hearing instrument, Save to database, Save to accessories (if accessory added to fitting).

Undo/Redo: removes or repeats an action that was made in the fitting software. Hover over the icon to see which action will be affected by clicking. Undo/Redo is available within some tasks but the list of items to be undone will not carry over across tasks.

Quick View Pane

The Quick View Pane is a multi-tab panel, located in the upper right of the Aura:fit screen, that provides useful information on the current status of the hearing instrument fitting. Each tab can be expanded by clicking on the plus sign to view additional details relating to that section. Located above the Quick View Pane are additional fitting tools.



Each tab serves a different purpose:



Client tab

Provides the client's name, number, last audiogram date, hearing instrument type and accessories. Clicking on the plus sign provides access to more information on the hearing instruments, date of birth, and an area for note entry.



Connection tab

Lists current hearing instrument(s) along with the current connection status for each ear. An X icon next to the associated side (R or L) indicates the device is not connected, while a checkmark indicates the device is connected. If the connection is lost at any point, click the Detect bar on the Connection tab to reconnect. Click the plus sign to expand the Connection tab where you can see at a glance information related to the fitting device and the hearing instruments.

Note: HI-PRO refers to the original HI-PRO, USB HI-PRO and HI-PRO 2. The HI-PRO that is actually used is configured using the HI-PRO configuration tool.



Alerts tab

Provides fitting help and alert messages during the fitting. A yellow-highlighted alerts tab appears momentarily to inform you of items that could impact your fitting should an action result in the need to modify the hearing instrument (e.g., recalculation) or affect another software screen (e.g., program removal changes program toggle on remote control). Clicking the plus sign provides a list of all help and alert messages that have occurred during the current fitting. The alert messages are automatically removed after being addressed during the fitting, after closing a session or via the remove icon on the alert tab.



Client View tab

Allows you to display client oriented screens on a second monitor while using Aura:fit software. The client screens may change depending on the task being performed by you. For example, screens were created for the feedback test to remind the client to remain quiet. Using checkboxes, you can select a screensaver, client view, or none. The screen selected for the second monitor is displayed within the quick view pane area. Clicking the plus sign provides you with available screen options. There may be secondary screens for you to choose to display such as on the audiogram screen there is a diagram of the ear.

Located beside Quick View pane area

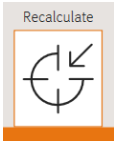
myUnitron account

This area allows you to see if you have signed in to your myUnitron account in Aura:fit.

If you have not signed in, click the link to see a dialog where you can:

- Enter your credentials
- Register for a new account
- Recover your password
- Enable remote adjust (which is required to enable you to perform remote adjust sessions for your clients)
- Once you have signed in, your user name will be shown here. Click on it to see the following option:
 - Sign out. Your user name will be remembered in Aura:fit

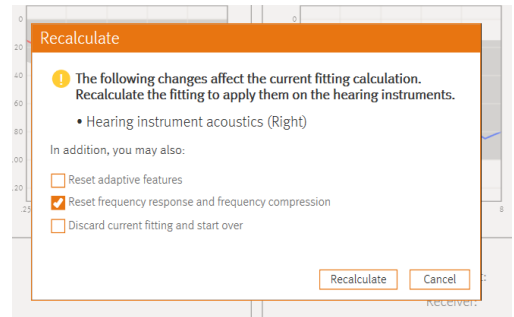
Recalculate



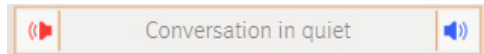
Recalculates the fitting based on the current audiogram, fitting formula, hearing instrument acoustics, etc.

Click the Recalculate button to see all the pending changes and the recalculation options.

The pre-selected recalculation options vary depending on the pending changes.



Note: The Recalculate button will be highlighted in orange when a recalculation is recommended during fitting. When you enter the Fitting section with pending changes, for example, hearing instrument acoustics, the Recalculate dialog will appear to remind you that a recalculation is recommended before further fine tuning is performed. You can select to ignore the recalculate dialog which will prevent it from appearing again during the current active session. However, the Recalculate button will remain highlighted in orange as a persistent reminder that a recalculate is recommended.



Mute / unmute

Indicates the current state of the hearing instrument(s): muted or unmuted. Mute / unmute can be selected individually for each device or binaurally by clicking the centre of the button. The centre of the button also lists the currently active environment for the hearing instrument(s).

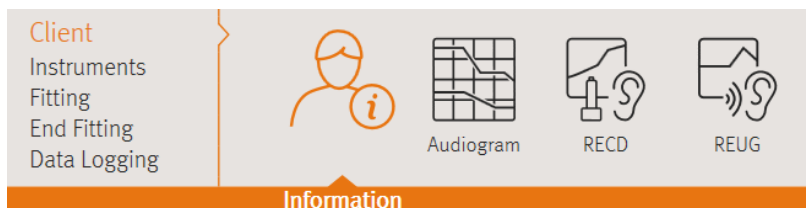


Fitting Mode

Fitting mode is designed to efficiently provide age-appropriate hearing aid settings based on the unique fitting needs of children versus adults. When client information is entered and the age is 18 years or less, Aura:fit will automatically prompt you to select the appropriate fitting mode option via a pop-up window. The fitting mode can be changed by clicking on the button and selecting the desired setting from the drop-down box.

Note: Fitting mode defaults can be edited under **Options > Preferences > Fitting Session > Pediatric Modes**

Client menu



Information

NOAH version

When running Aura:fit under NOAH, the information screen is primarily for reference purposes showing details of the Client Summary, Session Summary and Accessories.

Standalone version

When running the Aura:fit standalone version, the **Client > Information** screen is the interface with the client database.

To enter a new client in standalone:

1. Click on the **New Client** button.
2. Enter the client information in the appropriate fields. The minimum required information is indicated with an asterisk (*).

Note: The client's gender will impact the targets generated by NAL-NL2; client's date of birth will impact the Automatic Adaptation Manager setting, the recommended fitting mode, and the default values assumed for acoustic transforms (e.g., RECDs).

3. Click **Save**. A Client Summary table at the bottom of the screen will be populated with the client information and the client will be visible in the Clients and Sessions table.

To edit client information in the future, click on the **Edit Client** button in the summary area, or click on the **Edit** icon in the Clients and Sessions table.

To find client information in the database:

1. Type the client name into the search field.
2. Click the **Search** icon. A list of client records matching the search criteria is displayed in the table. The list may be sorted by clicking the column headings.

To create a fresh session for the client containing no previous audiometric or fitting information, click on the Blank Session icon. In the Clients and Sessions table:

- Double clicking on a client will open the last session for that client or if the client does not have any sessions it will open a blank session.
- You can delete a specific client by clicking on the client and then clicking the **Delete Client** icon.
- For each client you can view all of their session information by clicking on the plus sign to the left of the client number.
- You can open a specific session by clicking on that session and then clicking the **Open Session** button or icon.
- You can delete a specific session by clicking on the session and then clicking the **Delete Session** icon.
- You can create a blank session by clicking on the client information and then clicking **Blank Session** icon.

Audiogram

NOAH version

When running Aura:fit under NOAH, the audiogram screen is primarily for reference. The transducer used for audiometry and the tinnitus match sections are used as described below. To enter or change all other audiometric information, use the NOAH audiogram module.

Standalone version

When running the Aura:fit standalone version, the audiogram screen provides the ability to enter the client's audiometric test results.

Select the transducer used for audiometry from the dropdown menu.

Note: ABR eHL and ABR nHL data is only used with the DSL v5 fitting formula.

To complete the audiogram, enter the data for the appropriate ear by clicking on the graph. Right clicking the graph provides the option to: **Set point**, **Remove point**, **Remove all points** or **Copy (all curves)** or **Copy selected curve** to the other ear. In addition, right clicking provides the option of specifying the measurement type for each data point; choose from: **Unmasked**, **No response**, **Unmeasurable**, **Masked**, **Masked and no response** or **Masked and unmeasurable**.

- To enter air conduction data, click on the **AC** button.
- To enter bone conduction data, click on the **BC** button.
- To enter uncomfortable loudness level data, click on the **UCL** button.

Note: NAL-NL1 and NAL-NL2 do not use UCL data for target generation.

- To copy the entered curve from one ear to the next, click on the **arrow** icons above the graph for the respective ear.
- To delete all of the curves on the audiogram, click on the **Remove** (Delete) icon.
- Click on **Use Audiogram** to use the Audiogram for fitting formula targets.
- Click on **Use In Situ** to use the measured In Situ data for fitting formula targets.

Note: In cases where an In Situ measurement was previously conducted, you will see this information faded in the background behind the standard audiogram data when Use Audiogram is selected.

- If desired, speech sounds and common sound icons can be displayed on the audiogram for counselling purposes by selecting the check box for the desired information.
- **Measured Tinnitus Match** information can be entered at the bottom of the Audiogram screen.
- To enter tinnitus pitch match frequency, type in the value directly or choose a desired frequency via the dropdown box. The entered frequency must be between 125 Hz and 8000 Hz.
- To enter the corresponding tinnitus loudness level, type in the value directly or choose a desired dB SL value via the dropdown box. The entered value must be between 0 and 20 dB SL.

Note: Tinnitus match information is only used in the pre-calculation of the tinnitus masker noise.

RECD

This screen provides the option to enter real-ear- to-coupler difference (RECD) values or import them if they already exist in NOAH. (See Importing RECD or REUG from NOAH). If RECD values have not been measured, age-appropriate average values generated by the selected fitting formula will be used for the quick fit calculation.

To complete the RECD screen, click the **Enter RECD** button to launch a wizard that will ensure you enter all of the mandatory data. Right clicking on the graph provides the option to: **Set point, Remove point** or **Remove all points**.

Select the values for **Earpiece used for measurement** and the **Coupler used for reference measurement** from the drop down menus and select the date that the RECD measurement was taken.

If the BTE Coupler is selected you will additionally be required to make a selection from the **Measurement Equipment** drop down.

Once all of the mandatory data selections have been made, the **OK** button will become active allowing you to add the RECD measurement data to the fitting.

The entered curve can also be copied to the other ear by clicking on the arrow icons located between the graphs.

Click on **Use entered RECD** to use the RECD data entered into the graph as the basis of fitting formula targets. Deselect **Use entered RECD** to use age appropriate average RECD values as the basis of fitting formula targets.

Note: If a hearing instrument is already selected a grey curve will appear on the RECD graph. This grey curve represents the average data for the client's age and earpiece condition.

REUG

This screen provides the option to enter real-ear unaided gain (REUG) values or import them if they already exist in NOAH. (See Importing RECD or REUG from NOAH). If REUG values have not been measured, age-appropriate average values generated by the selected fitting formula will be used for the quick fit calculation.

To complete the REUG screen, enter the data for the appropriate ear by clicking on the graph. Right clicking on the graph also provides the option to: **Set Point, Remove Point, Remove all points** or **Copy** to the other ear. The entered curve can also be copied to the other ear by clicking on the **arrow** icons located between the graphs.

Select the sound field speaker location used during the measurement from the drop-down menu, choose from: **0 degrees, 45 degrees** or **90 degrees** azimuth.

Click on **Use Entered** to use the REUG data entered into the graph as the basis of fitting formula targets. Click on **Use Average** to use age appropriate average REUG values as the basis of fitting formula targets.

Note: If a hearing instrument is already selected a grey curve will appear on the REUG graph. This grey curve represents the average data for the client's age and speaker location.

Importing RECD or REUG from NOAH

If there is RECD and / or REUG data stored in NOAH for the current client, then on the RECD and / or REUG screen there will be a button that asks if you would like to import this data. Importing the data from NOAH will overwrite data that you had manually entered in Aura:fit. If the imported RECD contains values for all of the mandatory fields, then the RECD settings will automatically be added to Aura:fit. If however, the data imported from NOAH does not contain values for all of the mandatory fields, the wizard will be shown and the user will need to manually add the missing content before being allowed to select **OK** and add the RECD to Aura:fit.

Instruments menu



Selection

The Selection screen provides the option to detect or simulate a hearing instrument.

Detect hearing instrument(s):

1. Choose the desired programming interface from the drop-down menu. Choose **Noahlink Wireless**, **iCube II / iCube**, **NOAHlink** or **HI-PRO**.

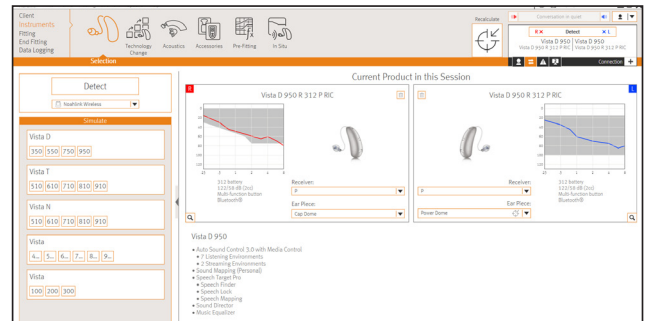
Note: HI-PRO refers to the original HI-PRO, USB HI-PRO and HI-PRO 2. The HI-PRO that is actually used is configured using the HI-PRO configuration tool.

2. Click the **Detect** button to perform a detection.

Note: BTE and RIC fittings using iCube II/ iCube may need to be assigned to a side (right or left). Select the **Play beep** button in the **Detection** dialog window to confirm the side assigned to each instrument.

Note: If using Noahlink Wireless, put hearing instruments in pairing mode. For units that have no battery door, press and hold the lower part of the button on each of the hearing instruments for 3 seconds until the indicator light changes temporarily to solid green. For units with a battery door, the units can be put in pairing mode by opening and closing the battery door. Pairing mode lasts for 3 minutes. To identify hearing instruments, use **Play beep** button or press the push button (if applicable) on the hearing instruments to highlight corresponding instrument on screen.

3. In cases where the data in the hearing instrument differs from that stored in the software:
 - Click **Use fitting from hearing instrument** to use data stored in the hearing instrument (including any data logging / learning information).
 - Click **Use fitting from this session** to use data stored in the software.



- Click **Create new fitting** to setup the hearing instrument using software defaults. If fitting a new client, or if the user has chosen to create a new fitting, then the Initial Configuration workflow (see below) will be displayed. For all other fitting scenarios, following a Detect the user will be directed to the Overview screen.

Initial Configuration

The Initial Configuration workflow is optionally displayed following detection of hearing instruments.

The workflow is displayed when:

- A new client is being fitted for the first time with new hearing instruments, or
- You select to **Create New Fitting** at the end of the Detect sequence.

When Aura:fit is reading a fitting from the detected hearing instruments, the workflow will not be displayed.

If the workflow is launched, there are five potential screens in the workflow.

Note: the hearing instruments will be muted, and the **Back** and **Next** buttons will allow you to navigate back and forth between the screens:

1. **Confirm technology level:** The first screen shown if fitting a Vista:trial unit. This screen allows you to view the differentiation in features between the current and other available technology levels. Click **Next** to maintain the current level. If you want to make a change, clicking **Apply** will launch the Change Technology Level wizard.
2. **Confirm client information:** The first screen shown if fitting a non Vista:trial device. On this screen you review the client's date of birth and audiogram and confirm their experience with hearing instruments, i.e. First Time or Long Term. If no audiogram is available for either side, the InSitu buttons will be shown allowing you to run through the InSitu workflow. If you need to change either the date of birth or the audiogram information select **Cancel** to make the changes. Note: This will disconnect the hearing instruments and following a subsequent **Detect**, the Initial Configuration workflow will be launched again.
3. **Confirm device acoustics:** Asks you to confirm the device acoustic settings with the option to change values if necessary.
4. **Confirm initial configuration:** On arrival at this screen, the first fit has been calculated and the hearing instruments will automatically be unmuted (the option exists to manually mute again if required). Additionally, you have the option to alter the Fitting Formula or make adjustments to the Adaptation Manager, with the ability to launch the Feedback Optimization workflow if necessary.
5. **Initial configuration complete:** As the final screen in the workflow, this provides quick links to the most common follow on actions within Aura:fit (i.e. Tuning, Program Manager, Accessories or Fitting Summary). Or you can exit the workflow by selecting **Close** where you will be returned to the screen from where you initially launched the device Detection. If fitting wireless Vista DX products, the setting to enable remote adjust for that client by clicking the Enable button is displayed. Display of this section is conditional upon you already being logged in to your myUnitron account and having remote adjust enabled.

Simulate hearing instrument(s)

1. Click the button for your desired product line in the hearing instrument simulation section on the left hand side of the screen. If you know what technology level you want, you can also click directly on the technology level button within the product line button to skip step 2.
2. Click on the desired technology level. To see more information about the different technology levels, click on the **+** sign beside the Technology Level title to view a feature comparison.
3. Select the desired style for that product line and technology level. To see more information about each style, click on the **+** sign beside the Styles title. When selecting a product style for simulation, clicking the centre of the button performs a binaural selection, while clicking the **R** or **L** buttons performs a monaural selection. At the top of the screen, under Current Product in this Session, you can see a summary of the products you have selected. For most product styles, you will also have a couple of acoustic options that you can select here or you can go to the full list under **Instruments > Acoustics**. Any changes made here will also be updated on the **Instruments > Acoustics** screen. Furthermore, if you wish to detect a product while on the simulation screen, select the desired programming interface from the drop-down menu in the upper left column of the screen, and then click **Detect**. The process will follow the steps outlined above in the Detect hearing instruments section of this guide.

Technology Change

Select the Technology Change screen to access upgrade functionality. With Vista:trial devices, you can select from one of the displayed technology levels. Clicking on one of the technology level buttons will launch the Change Technology Level wizard. Follow the on-screen instructions to change the technology level of the connected Vista:trial hearing instruments. The wizard will provide the following options: **Transfer fitting, Create new fitting**.

If you select **Transfer fitting**, then the program structure, frequency response, acoustics, Automatic Adaptation Manager status and accessories in the current client session will be transferred to the hearing instruments after the technology level change is complete.

If you select **Create new fitting**, then after the technology level change is completed, the hearing instruments will be set to the recommended defaults. Select your desired option and continue through the steps in the wizard.

Following completion of the technology change, proceed to **End Fitting > Beeps > Trial Duration** to configure the duration of the client's trial period with the hearing instruments. When the trial period expires, the 'End of trial.' beeps will play. See the End Fitting menu section for more details.

Note: The transfer fitting process will reset all adaptive features to the recommended defaults for the new technology level.

Note: Create new fitting will reset all hearing instrument settings including the acoustic options. You should confirm that the hearing instrument parameters are set as desired following this process.

Note: The data logging in the hearing instrument will be lost during this process.

Note: The current technology level contained within the hearing instrument is indicated by the shaded blue button and also is displayed in the Quick View Pane connection tab.

Note: Vista:trial is available for Vista T BTE, Vista N BTE, Vista T RIC, Vista N RIC (except R 10), Vista BTE, Vista RIC products, Vista D, Vista DX RIC and Vista DX BTE products.

For R 10 products, you can use a R 13 or Rm 312 device and then transfer the settings to a R 10 device after the trial.

Acoustics

Select the Acoustics screen to configure items such as: coupling, venting, earhook, tubing, earpiece, receiver unit, and Peak Resonance.

BTE and RIC instruments

- If you have ordered your earmold, cShell, or sleeve molds with IntelliVent, enter the code and the software will automatically use the optimal venting.
- For BTEs select Regular Tube, Slim Tube or Power Slim Tube (Super Power only).
 - For BTEs with an earhook, select Vent size, Earhook type and Tubing type.
Note: with Vista D or Vista DX, Earhook and Tubing settings will default to values of 'Filtered' and 'Standard' respectively. No drop downs will be displayed.
 - For BTEs with Slim Tube, select your Ear Piece, Vent and Tubing Length (optional).
 - For Super Power BTEs with Power Slim Tube, select your Ear Piece, Vent and Tubing Length.

Note: The tubing length parameter is for record keeping with slim tubes and has no impact on the output of the system. In contrast, tubing length will impact Super Power products with power slim tubes and should be set appropriately as this parameter will influence the quick fit.

- For RICs, select your Receiver, Ear Piece, Wire Length (optional) and Dome Size (optional). Note: The wire length and dome size parameters are for record keeping only and have no impact on the output of the system.
- For RICs (on the Vista D or Vista DX platform) using SDS 4.0, Aura:fit automatically detects the receiver during the detection process. Press the **Check** button to manually check that the fitted receiver is in fact the one you have selected in Aura:fit software. A receiver is recommended based on your client's hearing loss. The recommended receiver will be indicated by a target symbol.

Note: Click on the **Recalculate** button after configuring the acoustic parameters to ensure the product fitting considers these aspects.

Custom instruments

For custom instruments, you can configure the vent. If you have ordered the custom products with IntelliVent, the software will automatically read the code and use the optimal venting.

Note: With simulated fittings, you can also select the shell and receiver type using the provided drop-down menus on the Acoustics screen (if applicable). In contrast, these parameters are read from the detected hearing instrument and cannot be changed through the software.

Accessories

The accessory screen will show those accessories which are compatible with the hearing aid(s) selected or detected. By clicking on the accessory, you can activate or simulate an accessory for configuration purposes.

If an accessory button has a check mark in the corner, then at least one of these accessories has been added to the fitting. You will also see the serial number of an activated accessory or the word Simulated if the accessory has just been simulated.

Remote Control / Remote Control 2

To pair a remote control:

1. Click the **Remote Control** button.
2. Click the **Activate** button.
3. A Detect new accessories pairing wizard appears. Connect a USB cable to the remote control and your computer, and follow the on-screen instructions.
4. After pairing, the serial number of the paired remote control is automatically shown in the serial number box. Various check boxes and a drop-down menu appear to configure the remote control.

To simulate a remote control:

1. Click the **Remote Control** button.
2. Click the **Simulate** button.
3. The serial number box will say Simulated Remote Control and a graphic with various configuration options appears.

Note: You can select the **Delete** icon to remove any paired / simulated accessory from the fitting. You can add up to 4 remote controls to the hearing instrument fitting. Any simulated remote control can be added later to the fitting by clicking the **Activate** button beside the row assigned to the simulated accessory. To modify the configuration of a paired remote control, click on the serial number of the device you would like to modify.

With Vista DX devices, you can add a Remote Control device but there are no configurable elements, merely the option to “Include in fitting” and “Remove from fitting” allowing you to track if your client has one of those devices.

PartnerMic

With Vista DX devices you can add a PartnerMic but there are no configurable elements, merely the option to “Include in fitting” and “Remove from fitting” allowing you to track if your client has one of those devices. If a PartnerMic is included, an explanatory section of text will be added to the Getting Started Guide confirming the selected activation behavior.

uDirect 2 / uDirect 3

To pair **uDirect 2 / 3**:

1. Click the **uDirect 2 / 3** button.
2. Click the **Activate** button.

3. Detect new accessories pairing wizard appears. Connect a USB cable to the **uDirect 2 / 3** and your computer, and follow the on-screen instructions.
4. After pairing, the serial number of the paired **uDirect 2 / 3** is automatically shown in the serial number box. Various check boxes and a drop-down menu appear to configure **uDirect 2 / 3**. These controls include:

Notification Options:

There are three levels of notification.

1. Warnings only – low **uDirect 2 / 3** battery; Bluetooth pairing process.
2. Standard – Warnings only notifications + **uDirect 2 / 3** on/off; starting/ending charging during streaming; input channel confirmation; FM announcements; plus for uDirect 3 transfer call and hold call.
3. Detailed – Standard notifications + starting/ending charging without active streaming; external microphone connection; Bluetooth device connect/disconnect; transfer call; hold call.

In addition, you can select whether the notifications above are provided via ‘Beeps’ or ‘Spoken’ words. Should you select ‘Spoken’, you have the option of selecting the language used for the notifications, selected via the provided drop-down menu.

Enable Caller ID

Select to enable / disable the use of spoken caller ID notification for incoming call on phones supporting this feature.

Phone Streaming Functions

Access button options:

1. Redial – select to enable redialing of the last number called on phones supporting this feature.
2. Transfer call back to phone – select to enable the client to transfer a streamed phone call back to their paired phone.

Connect button options:

1. Voice dial – select to enable voice dialing for phones supporting this feature.
2. Hold – select to enable access to the functionality to put a phone call on hold.
3. Hear own voice during call – select to allow user to hear their own voice during a call which is more natural sounding, especially for closed fittings. Select the desired attenuation for the client’s own voice.

Remote Control Functions

Check this to allow the uDirect 2 / 3 to function as a remote control when the hearing instrument is not in streaming mode. Configure the ‘Plus/Minus’ buttons.

Simulate

To simulate uDirect 2 / 3:

1. Click the **uDirect 2 / 3** button.
2. Click the **Simulate** button.
3. The serial number box will say Simulated **uDirect 2 / 3** and a graphic with various configuration options appears.

Note: You can select the **Delete** icon to remove any paired / simulated accessory from the fitting. You can add up to 4 uDirect 2 / 3 to the hearing instrument fitting. Any simulated uDirect 2 / 3 can be added later to the fitting by clicking the **Activate** button beside the row assigned to the simulated accessory.

Note: To perform remote control functions, the uDirect 2 / 3 must be paired to the hearing instrument. You can use the uDirect 2 / 3 without pairing it with the hearing instruments, but for streaming only.

Note: Allow uDirect 2 / 3 streaming to other wireless Vista hearing instruments: Uncheck to prevent uDirect 2 / 3 from working with Vista devices it has not been paired with.

Note: To modify the configuration of a paired uDirect 2 / 3, click on the serial number of the device you would like to modify.

Note: The input volume correction is not required with this accessory given the user can configure the volume level of streamed signals via the +/- buttons on the front of uDirect 2 / 3 and the accessory will maintain the user's adjustments for future streamed signals.

uStream

To pair uStream:

1. Click the **uStream** button.
2. Click the **Activate** button.
3. Detect new accessories pairing wizard appears. Connect a USB cable to the uStream and your computer, and follow the on-screen instructions.
4. After pairing, the serial number of the paired uStream is automatically shown in the serial number box. Various check boxes and a drop-down menu appear to configure uStream.

These controls include:

Notification Options

There are three levels of notification

1. Warnings only – low uStream battery; Bluetooth pairing process
2. Standard – Warnings only notifications + uStream on/off; starting/ending charging during streaming; input channel confirmation; transfer call; hold call
3. Detailed – Standard notifications + starting/ending charging without active streaming; external microphone connection; Bluetooth device connect/disconnect

In addition, you can select whether the notifications above are provided via 'Beeps' or 'Spoken' words. Should you select 'Spoken', you have the option of selecting the language used for the notifications via the provided drop-down menu.

Enable caller ID – select to enable/disable the use of spoken caller ID notification for incoming call on phones supporting this feature.

Phone Streaming Functions

Access button options:

Redial – select to enable redialing of the last number called on phones supporting this feature.

Hear own voice during call – select to allow user to hear their own voice during a call which is more natural sounding, especially for closed fittings. Select the desired attenuation for the client's own voice.

Remote Control Functions

Check this to allow the uStream to function as a remote control when the hearing instrument is not in streaming mode.

Note: Allow uStream to stream to other wireless compatible hearing instruments: Uncheck to prevent uStream from working with devices it has not been paired with.

Note: To perform remote control functions, the uStream must be paired to the hearing instrument. For streaming only you are able to use the uStream without pairing it to the hearing instruments.

Note: You can select the **Delete** icon to remove any paired accessory from the fitting. You can add up to 4 uStreams to the hearing instrument fitting.

Note: To modify the configuration of a paired uStream, click on the serial number of the device you would like to modify.

Note: The input volume correction is not required with this accessory given the user can configure the volume level of streamed signals via the +/- buttons on the front of uStream and the accessory will maintain the user's adjustments for future streamed signals.

Simulate

To simulate uStream:

1. Click the **uStream** button.
2. Click the **Simulate** button.
3. The serial number box will say Simulated uStream and a graphic with various configuration options appears.

Note: You can select the **Delete** icon to remove any simulated accessory from the fitting. You can add up to 4 uStreams to the hearing instrument fitting. Any simulated uStream can be added later to the fitting by clicking the **Activate** button beside the row assigned to the simulated accessory.

Hearing Remote app

The Hearing Remote app is only available for Bluetooth enabled hearing instruments. The app does not need to be included in the fitting in order to use it.

Pre-Fitting

Super Power pre-sets (if applicable)

Select your desired pre-set as a starting point for your super power hearing instruments fitting.

- Classic: A classic approach to sound processing - for those who prefer things the 'old way' with little to no signal processing and no directionality.

- Conventional: A conventional approach to sound processing - for those who prefer a more traditional approach to amplification, including moderate signal processing and some directionality.
- Current: A current and modern approach to sound processing - for those who prefer the latest technology, including advanced signal processing and directionality.

Fitting Formula

Select your desired fitting formula from the provided drop-down menu: DSL v5 Adult, DSL v5 Pediatric, NAL-NL1, NAL-NL2, and NAL-NL2 Tonal Language.

Processing Strategy

With DSLv5 adult or DSLv5 pediatric, select your desired processing strategy from the drop-down menu: WDRC or Linear.

Note: Selecting NAL-NL2 or NAL-NL1 provides a WDRC processing option only.

Tinnitus Masker Strategy

Select your desired tinnitus masker signal strategy from the drop-down menu:

Audiogram-based, White Noise, or Pink Noise.

Note: The Tinnitus Masker Strategy task box will only be visible with products supporting this feature.

Note: The tinnitus masker strategy impacts the calculation for the frequency shape of the tinnitus masker noise. The tinnitus masker noise can be viewed and fine tuned in the **Fitting > Tuning > Tinnitus Masker** task box.

Frequency Compression Strategy

Specify if Frequency Compression 2 calculates each side independently.

In Situ

Use the In Situ screen to assess hearing sensitivity and uncomfortable loudness levels via signals generated by the hearing instruments. The In Situ measurement results can be used to define the fitting formula targets.

1. Click on the **Start In Situ** button for the device / ear you would like to assess.
2. An In Situ wizard will appear. Preparation information is provided to assist with the test.
3. Select the coupling option to be used for the In Situ test. The options available will depend on the form factor being fitted and can include:
 - a. Vented (current vent value). Note: Ensure the product venting is configured correctly in the acoustics screen as it will impact the signal level generated by the device.
 - b. Temporarily occluded earpiece.
4. After the coupling option is selected, click Continue to get to the In Situ measurement step.
5. Select the desired measurement type (AC: air conduction or UCL: uncomfortable loudness level) via the appropriate button.
6. Select the desired frequency /presentation level by clicking on the graph.
7. Present the tone by using the space bar or by clicking the Present Tone button.
8. To present tones automatically when you click on the graph, select the Enable Autoplay option.

9. If you desire to present tones at a loudness level beyond the safety limit of 100 dB HL, select the **Enable HL > 100 dB HL** option.
10. To speak with the client during the test, the hearing instrument microphones must be enabled by clicking on the Talk to Client button. The volume level of the device can be adjusted as required using the up/down volume arrow keys.

If you would like to use the In Situ data as the basis for the hearing instrument quick fit, check the Use In Situ data to recalculate hearing instrument settings check box. Following completion of the test, the In Situ data will be displayed on the graph, along with any previous standard audiometric data if it is available.

Note: If a previously entered audiogram is available in the session, it will be shown faded into the background for reference purposes on the In Situ and Audiogram screens.

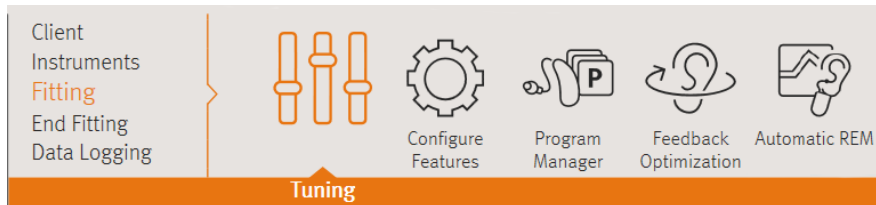
Click on **Use Audiogram** to use the entered standard audiometric data for fitting formula targets.

Click on **Use In Situ** to use the measured In Situ data for fitting formula targets.

Note: The In Situ data can be deleted using the **Remove** (Delete) icon above the graph.

If desired, speech sounds and common sound icons can be displayed on the audiogram for counseling purposes by selecting the check box for the desired information.

Fitting menu



Tuning

Select the **Tuning screen** to adjust Adaptation Manager, Occlusion Manager, Bass Enhancer (Super Power only), Soft/Mod/Loud Controls, MPO/Gain/CR Controls, App Equalizer, Frequency Compression (select products), Frequency Compression 2, Fitting Advice, and Tinnitus Masker (select products). The settings for each program automatically default to suggested values. Prior to adjusting any of the parameters listed above, select the program you would like to tune from the program selector list on the left side of the screen. The active program is highlighted and its name is listed above the graphs and in between the mute buttons.

Note: On moving to the Tuning screen, **All Programs** is always selected by default. This ensures that the relative differences across all programs are maintained when making changes and helps to maintain seamless transitions in the Automatic Program / Auto Sound Control.

To fine tune the hearing instrument:

Select the desired program from the program selector list on the left side of the screen.

- To select all programs for modification, click the **All Programs** button at the top of the program selector list.

- To select all automatic programs, click the Automatic / Auto Sound Control program header above the individual environments.
- For Vista D and Vista DX, to select all Media Control programs, select Media Control program header above the individual streamed environments.
- To select all manual programs, click the Manual program header above the individual manual programs.
- To select all wireless programs, click the Wireless program header above the wireless programs.
- To select an individual program or environment, click the program name or environment in the program selector list.

Note: To simplify the view, you can click the plus / minus sign beside the program header to collapse or expand the program list for that category.

Adaptation Manager (for Vista T and older products)

1. Click on the **Adaptation Manager** task item at the bottom of the screen.
2. Select the Automatic check box to activate the Automatic Adaptation Manager (AAM). With Super Power products, select the Automatic / Power check box to activate the Automatic Adaptation Manager or the Power Adaptation Manager (PAM). The software will use a proprietary calculation that considers the client's hearing loss, age, and hearing instrument experience level (previously selected via the Client / Experience Level screen, which has been removed from v4.0 onwards) to determine the starting adaptation manager setting and the adaptation rate for the fitting.
3. If desired, change the speed of adaptation for the current fitting using the provided Adaptation Speed dropdown box. Choose from the following adaptation rates (the number of weeks / months changes depending on the difference between the Current Value and End Value):
 - 5% per week (~ 6 weeks)
 - 5% per 2 weeks (~ 3 months)
 - 5% per 3 weeks (~ 5 months)
 - 5% per 1 month (~ 6 months)
 - 5% per 2 months (~ 12 months)
 - 5% per 3 months (~ 18 months)
 - 5% per 4 months (~ 24 months)
 - 5% per 5 months (~ 30 months)
 - 5% per 6 months (~ 36 months)

Note: For Super Power, when the Current value is above the End Value, the above choices represent the approximate time for a 5% decrease in the current value of PAM.

Note: For calculation purposes, the adaptation rate assumes one week of use = 70 hours (i.e., 10 hours / day). Thus at the follow-up appointment, the Current position may differ from what is expected based on calendar days depending on the client's actual usage time per week.

4. If desired, you can adjust the Current position (% of target) and the desired End Value (% of target) for the chosen fitting formula using the provided sliders. If this is a follow-up fitting and the Automatic Adaptation Manager is enabled, then you will see a grey bar representing the adaptation progress that has been made so far.

Note: The predicted Time remaining to reach the end value will be updated automatically depending on the relative position of the Current and End Value sliders.

Note: If desired, the AAM or PAM can be disabled by de-selecting the Automatic check box. You can then select their desired adaptation manager setting using the Current slider.

Note: This feature is global and will impact all programs.

Note: For Super Power products, adaptation manager settings above 100% affect both the '% of target gain' provided and the MPO setting of the hearing instrument. Adaptation manager settings below 100% impact only % of target gain.

Adaptation Manager (Vista D and newer products)

There have been some updates to the Adaptation Manager which are applicable to Vista D and Vista DX products only. In essence the controls within Aura:fit for adjusting the current value are similar to what we had prior to Vista D with some key differences which we will cover here.

1. Click on the Adaptation Manager task item at the bottom of the screen.
2. Select the **Automatic** check box to activate the Automatic Adaptation Manager (AAM). Select the **Power** check box to activate the Power Adaptation Manager (PAM). The software will use a proprietary calculation that considers the client's hearing loss, age, and hearing instrument experience level (selected during the Initial Configuration workflow) to determine the starting adaptation manager setting and the adaptation rate for the fitting.
3. If desired, change the speed of adaptation for the current fitting using the provided Adaptation Speed dropdown box. Choose from the following Adaptation Speed rates (Slowest, Slow, Moderate, Fast, Fastest) which equates to an approximate number of weeks that it will take to move to the target value.

Recommended starting value

The Adaptation Manager will recommend a starting value based on the client's age, experience level with hearing instruments and their audiogram. If the client is a first-time user of hearing instruments, the recommended starting value will be less than 100%, where as if the client is a long-term user of hearing instruments, the recommendation will be the target fitting value, i.e. 100%.

You can always change the starting value to be either below the recommended value, or above the recommended value. In addition if you want to set the starting value to be above the target value, you can select the Power button which alters the scale to allow you to set a value above target with a maximum setting of 120%.

Recommended starting value markers

There are two persistent black markers to show the recommended starting percentage for a first time user as well as the target value of 100%. If you choose to alter the value, this means you will always have a visual indication as to the Vista recommended values.

Note: If the current value is equal to one of these defaults, you will only see the blue marker.

Automatic acclimatization

'Automatic' acclimatization is enabled by default. This provides an automated approach to acclimatization based on the selection of an Adaptation Speed. The selected Adaptation Speed is used in a formula which, when applied to the client's starting value provides an estimated time to reach full target.

Each pre-defined Adaptation Speed equates to taking x number of days to increase the current setting by 5% (see table below). A calculation is made taking the client's remaining percent value required to reach target, dividing that by 5 (to give the number of 5% increments) and multiplying that by x (the multiplier to be applied for the selected Adaptation Speed) to provide the approximate number of days to full acclimatization.

Note: If Power is selected, the formula works in exactly the same way only it reduces by 5% increments until it reaches the 100% target.

Speed	Days for 5% change
Fastest	2
Fast	4.3
Moderate	5.8
Slow	7.2
Slowest	9

The following examples explain in more detail how it works:

Calculation Formula:

Time to target = 'Adaptation Speed' multiplied by ('Percentage to target' divided by 'Percentage increments')

1. Adaptation Speed (AS) = x (where x represents the number of days it will take to increase the current value by 5%)
2. Percentage to target (PTT) = Target percentage (always 100%) minus Current percentage
3. Percentage increments (PI) = 5 (equating to 5%)

Example: Client starting at 60% of target, Percentage to target = 40%

Adaptation Speed = 'Moderate', equates to approximately 6 days per 5% change
 Time to target = AS x (PTT / PI)
 = 6 x (40 / 5)
 = 48 days
 = approximately 7 weeks

Adaptation Speed = 'Fastest', equates to 2 days per 5% change
 Time to target = AS x (PTT / PI)
 = 2 x (40 / 5)
 = 16 days
 = approximately 2 weeks

Occlusion Manager

1. Click the **Occlusion Manager** task item at the bottom of the screen.
2. Select your desired occlusion manager setting using the provided options to address any occlusion related complaints.

Note: This feature impacts all programs by default but there is an option to exclude the music program.

Bass Enhancer

1. Click the **Bass Enhancer** task item at the bottom of the screen.
2. Select your desired bass enhancer setting using the provided slider to increase low frequency gain and MPO (emphasis below ~ 1 kHz).

Note: This option is available with Super Power products. The feature is global and will impact all programs.

Soft / Mod / Loud Controls

1. Click the **Soft / Mod / Loud Controls** task item at the bottom of the screen.
2. Select the program(s) you wish to modify using the program selector list as described above.
3. Select the frequency resolution using the provided buttons.

Note: The frequency resolution depends on the technology level of the product you are fitting.

4. Select the frequency region(s) and input level(s) to be modified in the provided table:
 - To select an individual frequency region, select the desired value in the table.
 - A range of fitting values can be selected by either choosing a specific input label (loud, mod, soft), channel grouping label (low, mid, high or specific frequency columns) or the All table label. The selected frequency region(s) are highlighted in the table and shaded in the fitting graph.
 - To select multiple frequency regions for adjustment, you can also click and drag across the table. The slider bar along the bottom of the table allows you to view frequency regions that are outside the visible table area.
 - To view all frequency regions for a particular ear, and/or increase the size of the selectable boxes in the table, click on the **View right ear only** or **View left ear only** text as appropriate. To change the table view back to a binaural view, click on the text **View both ears**.

Note: when viewing the values for one ear only, if the view is coupled, then any +/- changes will be reflected in updates to the graphs for both the left and right ears. But the specific values displayed in the table will reflect the values for currently selected ear only.

You can toggle between viewing the values for the left ear or right ear, or if you want to view the different values for both ears at the same time, you can show a binaural view of the values by clicking **View both ears**.

- Once you have selected your desired region for adjustment, click the dB drop-down menu to alter the step size of any change. Choose from 1, 2 or 3 dB.
- Click the **+** or **-** buttons to apply the desired change.

Note: When a fitting handle has reached its maximum setting, the **+** button will grey out (disable). Conversely, if a fitting handle is at its minimum setting, the **–** button will grey out (disable).

Note: The table will also display the calculated compression ratios. The compression ratios are calculated based on the slope of the I/O curve between the TK soft and TK loud inputs.

MPO / Gain / CR Controls

1. Click the **MPO / Gain / CR Controls** task item at the bottom of the screen.
2. Select the program(s) you wish to modify using the program selector list as described above.
3. Select the frequency resolution you require for your modification using the provided tabs.
4. Note: TK soft speech control will be shown if selected within preferences.
5. Select the frequency region(s) and parameter type (MPO, Gain , CR or TK) to be modified.
 - To select an individual frequency region, select the desired value in the table.
 - A range of fitting values can be selected by choosing a specific parameter label (MPO, Gain, CR or TK). The selected frequency region(s) is highlighted in the table and shaded in the fitting graph.
 - TK soft speech can be used to adjust the gain for low level sounds. Impact of the adjustments is opposite to the other controls: increasing TK soft speech will decrease gain for low level sounds and vice versa.
 - To select multiple frequency regions for adjustment, you can also click and drag across the table. The slider bar along the bottom of the table allows you to view frequency regions that are outside the visible table area.
 - To view all frequency regions for a particular ear, and/or increase the size of the selectable boxes in the table, click on the **View right ear only** or **View left ear only** text as appropriate.
 Note: when viewing the values for one ear only, if the view is coupled, then any +/- changes will be reflected in updates to the graphs for both the left and right ears. But the specific values displayed in the table will reflect the values for currently selected ear only.
 You can toggle between viewing the values for the left ear or right ear, or if you want to view the different values for both ears at the same time, you can show a binaural view of the values by clicking **View both ears**.
- Once you have selected your desired region and parameter type for adjustment, click the dB drop-down menu to alter the step size of any change. Choose from 1, 2 or 3 dB.
- Click the **+** or **–** buttons to apply the desired change.

Note: When a fitting handle has reached its maximum setting, the **+** button will grey out (disable). Conversely, if a fitting handle is at its minimum setting, the **–** button will grey out (disable).

Note: The compression ratios are calculated based on the slope of the I/O curve between the TK soft and TK loud inputs.

App Equalizer

Note: this option is only available with Vista DX wireless products.

- Open the Tool Box to see the App Equalizer settings that the client has set via their Hearing Remote app for the currently selected program.
- Selecting a program will show the settings the client has applied to that program. If the client has not made any changes via the Hearing Remote app, all sliders will be set to zero. Note: All environments within the Auto Sound Control program share the same settings, and you can not view settings for the Media Control, Bluetooth Phone or RogerDirect programs.
- Select Bass, Mid or Treble to see the frequency groupings on the graphs.
- Click on a slider and drag it up or down to increase/decrease gain and see the impact reflected on the graphs. Note: The gain change that the equalizer applies varies a) depending upon the direction of change (up or down) and b) as a function of the signal level. The max increase or decrease that will ever be applied is 10dB.
- Any changes made to the sliders will be applied to the hearing instruments in real time.
- Click **Reset** to return all three slider values to zero.
- If you change any of the sliders from their initial values, an indicator will mark the value of the original setting. Note: Changing program selection will delete the initial values for the previously selected program.

Frequency Compression

Note: This option is available with select products.

1. Click the **Frequency Compression** task item at the bottom of the screen.
2. Select the program you wish to modify using the program selector list described above.
3. Click the **Enable Frequency Compression** check box to activate / deactivate this feature.
4. Adjust the Frequency Compression to the desired setting using the **More** or **Less** buttons. Adjusting the frequency compression impacts:
 - The frequency at which the compression will begin. Below this specified cut- off, no frequency compression will be applied.
 - The compression ratio or the amount of compression that will be applied in the frequency domain above the cut-off frequency.

Note: The software will automatically calculate the starting default position of the frequency compression based on the client's better ear audiogram and the fitting formula. With the DSL v5 pediatric fitting formula, frequency compression default settings are more aggressive (i.e. lower cut-off frequency, higher compression ratio) to emphasize audibility of high frequency speech cues for children.

Note: For clients with asymmetrical hearing loss, the frequency compression settings will be based on the audiometric thresholds from the better ear and applied to both devices in binaural fittings.

Note: The shaded region on the slider reflects the frequency compression region which is also displayed on the frequency response graphs.

Frequency Compression 2

Note: This option is available with select products.

1. Click the Frequency Compression 2 task item at the bottom of the screen.
2. Select the program you wish to modify using the program selector list described above.
3. Click the Enable Frequency Compression 2 check box to activate / deactivate this feature.
4. Adjust Frequency Compression 2 to the desired setting using the Audibility/Distinction and Consonant Clarity/Vowel Quality sliders. The sliders have the following impact:
 - Audibility/distinction: This slider adjusts both cut-off frequencies and the compression ratio. The default predicts the lowest possible setting required to provide audibility.
 - Audibility: improves audibility of high frequency sounds by lowering them into a useable/audible range (more frequency compression)
 - Distinction: improves distinction of high frequency sounds like 's' and 'sh' due to greater separation (less frequency compression)
 - Consonant clarity/vowel quality: This slider is dependent on the top slider and is automatically optimized for clarity but can be adjusted for sound quality.
 - Consonant clarity: increases the compressed range for high frequency sounds (consonants)
 - Vowel quality: decreases the compressed range for low frequency sounds (vowels).

Note: The software will automatically calculate the starting default settings for Frequency Compression 2 based on the client's better ear audiogram and the fitting formula. To calculate each side independently go to Pre-Fitting > Frequency Compression Strategy.

Note: With the DSL v5 pediatric fitting formula, Frequency Compression 2 default settings are more aggressive (i.e. lower cut-off frequency, higher compression ratio) to emphasize audibility of high frequency speech cues for children.

Note: For clients with asymmetrical hearing loss, the Frequency Compression 2 settings will be based on the audiometric thresholds from the better ear and applied to both devices in binaural fittings. To calculate each side independently go to Pre-Fitting > Frequency Compression Strategy.

Note: The shaded region on the frequency response graphs reflects the Frequency Compression 2 region. The solid line at the beginning of the shaded region shows the cut-off frequency for high frequency dominated signals. The dashed line within the shaded region shows the cut-off frequency for low frequency dominated signals.

Fitting Advice

1. Click the Fitting Advice task item at the bottom of the screen.
2. Select the program(s) you wish to modify using the program selector list as described above.

3. Select the situation (type of sound environment) that is problematic for the client using the Select Situation dropdown box.
Note: If the Difficult Situation Predictions feature is available the dialog will default to show the top three predictions. However, you can toggle between this view and the standard Fitting Advice view (to view the full list of Situation 'Categories' and 'Sound Types') by clicking on 'Show Full List' or 'Show Predictions'.
4. Select the concern that best describes the client's complaints for that sound type using the Select Concern dropdown box.
5. A description of the proposed change appears on the screen and an associated sound file is automatically selected by the media player.
6. If desired, play the associated sound file and/or apply the suggested change using the Apply button. Any previously applied undesirable changes can be removed using the Undo button.

Tinnitus Masker

This option is available when the product supports this feature. The tinnitus masker noise is disabled by default. When it is enabled, the quick fit level should be at a soft but audible level. The calculated masker noise level with the current settings will be displayed in dB(A) in the task box.

1. Click the **Tinnitus Masker** task item at the bottom of the screen.

Note: The graph view will automatically change to 'output' upon selection of the tinnitus masker task box to allow you to view the tinnitus masker output level relative to the hearing aid output settings.

2. Click the **Enable Tinnitus Masker** check box to activate the masker noise.
3. Click the checkbox beside Use client control to adjust noise level to allow client to adjust the noise level using any volume or Smart Balance control on the hearing instruments or accessories. Selecting this option will prevent the client from adjusting the gain or the Smart Balance setting for this program.

Note: This setting is binaural and cannot differ across hearing instruments in the same fitting, even if the tinnitus masker is disabled or not available in one hearing instrument.

4. Select the frequency resolution you require for your modification using the provided tabs.

Note: The frequency resolution depends on the technology level of the product you are fitting.

5. Select the frequency region(s) to be modified in the table.
 - To select an individual frequency region, select the desired value in the table.
 - An entire frequency range of fitting values can be selected by choosing the 'Noise' label.
 - To select multiple frequency regions for adjustment, you can also click and drag across the table. The slider bar along the bottom of the table allows you to view frequency regions that are outside the visible table area.

- To view all frequency regions for a particular ear, and/or increase the size of the selectable boxes in the table, click on the View right ear only or View left ear only text as appropriate. To change the table view back to a binaural view, click on the text View both ears.
- Once you have selected your desired frequency region for adjustment, click the dB drop-down menu to alter the step size of any change. Choose from 1, 2 or 3 dB.
- Click the **+** or **–** buttons to apply the desired change.

Note: When a fitting handle has reached its maximum setting, the + button will grey out (disable). Conversely, if a fitting handle is at its minimum setting, the – button will grey out (disable).

Note: The alerts tab will highlight once the generated masker noise setting reaches a value of 80 dB(A) or greater to indicate that care should be taken when exposing the client to continued noise at this level to avoid an adverse impact on hearing. A recommended daily usage time based on NIOSH standards (<http://www.cdc.gov/niosh/docs/98-126/>) will also be indicated considering the current masker noise level and updated as the noise level is adjusted. The noise level settings will be limited such that the generated noise never exceeds a level of 85 dB(A), assuming at least 8 hours of use / day to address concerns regarding the impact of continued noise exposure on hearing sensitivity from NIOSH guidelines.

Note: The tinnitus masker settings are global for the Automatic Program / Auto Sound Control, so they will be the same in all Automatic Program / Auto Sound Control environments, but the settings can vary across manual programs.

Remote adjust

Remote adjust provides the ability to remotely deliver a fitting adjustment to your client without the need for an in-person fitting. Adjustments are easy to make via the remote adjust workflow and are sent directly to the client via the Hearing Remote app.

You can send multiple adjustments to the client, who can easily switch between the different adjustments via the app, and on detecting the hearing instruments during a follow up appointment the **Remote Adjust** toolbox will show the current adjustment settings applied on the hearing instruments.

See the remote adjust Guide under the Help/Instruction Guides menu option for more detail.

Configure Features

Select the Configure Features screen to adjust various adaptive parameters in the hearing instrument by clicking the desired task item.

Note: Media Control is available for Vista D and Vista DX. As part of Auto Sound Control 3.0, it allows the hearing instruments to classify specific streamed signals for Media Control speech and Media Control music, both of which can be configured/ fine-tuned similar to other programs.

Note: Within the configuration boxes for the various adaptive features, both ears are linked by default. To unlink, click the **link / unlink** icon within each feature's task box.

Sound Director

This feature is available for products on the Vista N, Vista T, Vista D and Vista DX platforms.

Depending on selected environment / manual program, adjustments to this feature can impact underlying speech enhancement, noise reduction, and/or directional strength. Please see feature diagram in software for more information.

1. Select your desired position using the provided slider.
2. The selected number for Sound Director will provide different strengths of underlying parameters depending on the environment.
3. A specific setting, such as “3” for Sound Director within environments under Conversations and No Conversations will have different underlying feature strengths.

Note: On initial arrival at the screen, all values will be set to the default values defined as per the fitting. If only the blue bar indicator shows this means that the current value is also the default value. If you change the value, the blue bar still shows the current value, but a new grey marker appears, providing a visual reference to the default value.

Input

1. Click Input.
2. The available microphone input options depend on the product and program being adjusted.

Note: For environments that offer mixed inputs (e.g., Telecoil + Microphone, Audio Streaming + Mic, Direct Audio Input + Mic), the microphone level can be adjusted using the mic attenuation slider from 0 to -30 dB with the exception of Auto DAI.

Note: When Binaural Phone is activated, the input selection task box offers the ability to configure phone ear inputs (Telecoil + Microphone with 0 to -30 dB mic attenuation; or Omni) and non-phone ear inputs (Audio Streaming + Mic with optional 6 dB mic attenuation or a mic attenuation slider from 0 to -30 dB available with some products).

Note: Settings for Media Control environments are shared. Any changes to input will apply to all environments.

Note: For Vista DX products, the Activation Behaviour for the PartnerMic and RogerDirect programs can be configured here. It is assumed all clients will want this set to Automatic. See TV Connector section in this guide for details on the three available options of Automatic, Manual or Manual (with beep).

RogerDirect has an additional configuration option Adaptive Microphone Behaviour. Hover over the options to see popups explaining the different settings

Wind Noise Manager / Wind Control

1. Click the Wind Noise Manager / Wind Control.
2. Select your desired wind noise manager strength from the provided options.

Pulse Protector 2

1. Click **Pulse Protector 2**.
2. Select your desired Pulse Protector strength from the provided options.

Phase Canceller

Select your desired phase canceller strength from the provided options.

Binaural Phone

Note: This feature is available when a telephone program is selected in a binaural fitting for select wireless products.

1. Click Binaural Phone.
2. Click the Enable Binaural Phone check box to activate this feature.
3. Select the client's preferred phone ear when selected using remote from the provided drop-down menu. This choice impacts the streaming direction when Binaural Phone is activated using the remote control phone button.
4. Click the HI push button selects phone ear check box to have the system stream the phone signal in either direction based on which push button was used to toggle into the Binaural Phone program. That is, the phone ear is identified as the side which had its push button activated.

Note: When accessing Binaural Phone streaming using Easy telephone, the phone ear is automatically identified as the side that triggered Easy telephone (ie., the ear where the phone receiver is located).

Note: When Binaural Phone is activated, the input selection task box offers the ability to configure phone ear and non-phone ear inputs (mic attenuation).

Note: Vista D and Vista DX have the ability to demonstrate the binaural phone feature within the Acoustic Telephone manual program during a client fitting. On selecting to Enable Binaural Phone and then activating the Acoustic Telephone phone program, you are now prompted to activate the binaural voice streaming functionality during the fitting. If you choose to activate it, the fitting will be saved to the hearing instruments which will then be rebooted and reconnected. Binaural voice streaming will be active until you change programs or disconnect the hearing instruments from the fitting software

Music Equalizer

Music Equalizer is available when a music environment or program is selected.

1. Click Music Equalizer.
2. Choose one of the default offsets from the provided drop-down menu.

With Vista D, you can also configure Music Equalizer specifically for the Media Control music environment. This works the same way as Music Equalizer does for the Music program but in this case it is for streamed music.

Automatic Controls

Note: This option is available when the automatic program or one of its environments are selected.

1. Click the Automatic Controls.
2. If available, select the client's Highest Priority and Lowest Priority environments from the provided drop-down menus (these setting are available with some early Vista products).

3. If desired, adjust the Sensitivity control using the provided drop down menu to impact how quickly the Automatic Program / Auto Sound Control responds to changes in the environment.

Note: The automatic controls should be left in their default positions for the initial fitting and reviewed later if the client has concerns regarding the instruments' switching behavior.

Note: This feature is global for all environments.

Smart Balance/Smart Balance SP/Smart Balance 2

This feature is available for products prior to the Vista N and Vista T platforms.

1. Click the Smart Balance/Smart Balance SP/Smart Balance 2 Configuration task item at the bottom of the screen.
2. Select your desired position using the provided slider.

Note: If desired, click on the icon to view the frequency response.

Car with Speech Direction

This program is not available with all models.

1. Click Speech Direction.
2. Use the drop-down menu to change the direction of the speech based on hearing needs.

Program Manager

Select the Program Manager screen to add or remove additional manual programs, copy programs, rename programs, change program order, and assign Easy telephone / Auto DAI access (when applicable).

To add programs to the manual program list:

- Select the program name under the **Available Programs** list or click the arrow next to the program name OR
- Click the **Copy** icon beside the program that you would like to copy from the Selected Programs list.

To remove manual programs:

- Click on the **Delete** icon next to the program in question.

To rename programs:

- Click the program name under the **Selected Programs** header.

To assign Easy telephone to a program in devices supporting this feature:

- Add a telephone program that has Easy telephone capability and select the **Easy telephone** check box beside that program in the column list.

Note: Easy telephone can only be assigned to one telephone program.

To assign Auto DAI to a program in devices supporting this feature:

- Add a DAI program and select the **Auto DAI** check box beside that program in the column list.

Note: Auto DAI can only be assigned to one DAI program.

To reorder manual programs:

- Click on the Move Program Up or Move Program Down icon next to the program in question.

Note: To select which program is the start-up program, go to the **End Fitting > HI Setup > Startup Settings** task box. By default, the **Automatic Program / Auto Sound Control** is the start-up program when it is included in the program toggle sequence. To remove the **Automatic Program / Auto Sound Control, Easy telephone and/or Auto DAI** from the program toggle sequence, go to **End Fitting > HI Setup > Program Toggle** task box.

Note: Mute program is only available for some products. If the mute program is not available, then create a Quiet program and then change the Input strategy under **Fitting > Configure Features** to Mute.

Feedback Optimization

Select the Feedback Optimization screen to run the feedback test.

1. Click the **Start Feedback Test** button.
2. Follow the on-screen instructions to perform feedback optimization. The status of the test appears above the graph (complete, incomplete, not run). In cases where the environment may have impacted the test (e.g., excess noise present), the final results include a combination of measured values and predicted feedback threshold values. The status then indicates Incomplete. Repeating the test will replace any predicted values with measured values if they can be reliably obtained in the current test environment.

Once the feedback test is completed, the hearing instrument's gain is limited as shown on the graph where:

- Black line = feedback threshold
- Grey line = hearing instrument gain limit
- Green line = target gain for 50 dB pure tone input
- Red or Blue line = aided gain for 50 dB pure tone input

Note: If desired, the feedback test can be deleted using the **Delete** icon above the graph for the device / ear in question.

Note: The phase canceller is enabled prior to running the feedback optimization test and the quick fit will be limited to the predicted maximum stable gain. Following the feedback test, the device is automatically quick fitted up to the desired adaptation manager level setting, but not beyond the measured maximum stable gain curve.

Note: For some products, after running the feedback optimization test the gain limit of the hearing instrument can be increased by up to 5 dB by clicking the checkbox under the graph for that instrument.

'Automatic REM' (introduced with the launch of Vista DX) integrates an automated workflow for REM with the Otometrics Aurical FreeFit solution, providing users with a seamless, step by step workflow that takes advantage of the features of the Auricle FreeFit solution whilst allowing the real ear activities to be performed from within the Aura:fit software. This creates an easy and effective way of incorporating REM into the fitting process.

Automatic REM

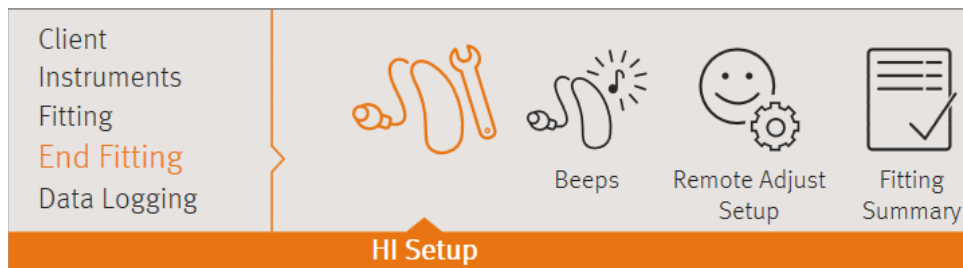
In summary, the Aura:fit integration will guide the HCP through the process of:

- Probe tube calibration
- Performing:
 - Real Ear Unaided Gain (REUG)
 - Real Ear Occluded Gain (REOG)
 - Acoustic Coupling (Ear-to-Coupler Level Difference ECLD)
 - Real Ear Aided Gain (REAG)
 - Microphone Location Effect (MLE)
- Automatic target matching

Automatic REM can be run on Vista T products onwards.

See the Automatic REM Guide under the Help/Instruction Guides menu option for more detail.

End Fitting menu



HI Setup

Select the HI Setup screen to configure the function of the user controls on the hearing instrument (e.g., push button, multi-function button, push button / rotary dial and lever / dial) along with the activation of Wireless synchronization (binaural wireless coordination) for each of these controls. In addition, HI setup allows you to adjust other hearing instrument parameters by clicking on the desired task item at the bottom of the screen. These options include **Bluetooth, TV Connector, Volume Settings, Startup Settings, Data Logging** and **Program Toggle Exceptions**.

Push Button

To configure the functionality of the push button (when available), select the desired item from the drop-down menu

- No function: the push button is disabled on the hearing instruments.
- Program change: press the push button to toggle through the various listening programs.
- Volume up: pressing the push button increases the volume in steps. Once the hearing instrument reaches the maximum volume, the next step will bring it back to the default volume level.

- Volume down: pressing the push button decreases the volume in steps. Once the hearing instrument reaches the minimum volume, the next step will bring it back to the default volume level.
- Right louder / left softer: pressing the push button on the right device increases the volume for both hearing instruments. Pressing the push button on the left device decreases the volume for both hearing instruments.
Note: Wireless synchronization must be on for this setting to function.
- Volume up / Program change: pressing the push button on the right increases the volume in steps; once the hearing instrument reaches the maximum volume, the next step will bring it back to the default volume level. Pressing the push button on the left changes the program.
Note: Wireless synchronization must be on for this setting to function.
- Program change / Volume down: pressing the push button on the right changes the program. Pressing the push button on the left decreases the volume in steps; once the hearing instrument reaches the minimum volume, the next step will bring it back to the default volume level.
Note: Wireless synchronization must be on for this setting to function.
- Smart Balance: R clarity, L comfort - pressing the push button on the right device moves the Smart Balance setting towards clarity for both hearing instruments. Pressing the push button on the left device moves the Smart Balance setting towards comfort for both hearing instruments.
Note: Wireless synchronization must be on for this setting to function.

Note: The program toggle on the remote is not impacted by the setting of this control.

Note: Some hearing instruments support a short press and a long press. You can configure them separately on this screen.

Multi-function button

To configure the functionality of the multi-function button (if available):

- With the multi-function button on Vista D and Vista DX hearing instruments, you simply check or uncheck the different button functions and Aura:fit applies pre-defined rules to assign functions against the button behaviours. In addition, there is the possibility to add Mute which has its own dedicated function.

Note: there is no ability to split functions between the ears , i.e. the defined button behaviour is the same whether pressing the buttons on the left or the right hearing instrument.

Show Behaviour

There are five defined behaviour options for the hearing instruments where settings can be assigned, i.e. Standard, Streaming (during notification), Streaming, Bluetooth phone (ringing) and Bluetooth phone (call). Selecting one of the five options updates the Button Behaviour display to show the current functions assigned to each of the Up/Down presses for both the Long Press and Short Press options for the selected behaviour.

Button Behaviour

Shows the associated settings for the selected behaviour indicating whether the behaviour is associated with an Up press, a Down press or both.

Button Functions

You can select which button functions are to be enabled on the hearing instruments, choosing from the four available options of Volume, Program Change, Accept/reject call or Mute/unmute mic.

The following matrix shows which Button Functions can be activated with each of the hearing instrument behaviours.

	Volume	Program change	Accept/reject call	Mute/unmute mic
Standard	Y	Y	N	Y
Streaming (during notification)	N	Y	Y	Y
Streaming	Y	Y	N	Y
Bluetooth phone (ringing)	N	N	Y	N
Bluetooth phone (call)	Y	N	Y	N

Note: Streaming (during notification) is only shown when one or more streaming programs has an Activation Behaviour setting of 'Manual (with beep)'.

Button function priorities

Button functions have a defined priority ranking and the function with the highest priority ranking is always allocated to the Short press button options.

The following matrix shows the Button Function priorities applicable for the Standard and Streaming behaviours:

	Selected	Button press	Selected	Button press	Selected	Button press
Volume (1)	Y	Short	N	-	N	-
Program Change (2)	Y	Long	Y	Short	N	-
Mute/unmute mic (3)	Y	Long	Y	Long	Y	Short

The following matrix shows the Button Function priorities for the Bluetooth Phone (call) behaviour. If volume is selected, it is assigned to Short press and End Call is assigned to Long press. If only Accept/Reject call function is selected, End Call is assigned to both Short and Long press

	Selected	Button press	Selected	Button press
Volume (1)	Y	Short	N	-
Accept/reject call (2)	Y	Long	Y	Short & Long

For Bluetooth Phone (ringing), the only available function is Accept/Reject call. If selected, Short press is assigned to Accept Call and Long press is assigned to Reject Call.

Note: the "mute" function is only available for Streaming and Standard behaviors as it serves the purpose of blocking the environment by muting the hearing aid microphone. It is not available during a phone call as if you cut access to the hearing aid microphone you deactivate own voice pick up.

Push button / Rotary dial

To configure the functionality of the push button / rotary dial (if available):

With the push button and rotary dial on Vista DX wireless ITE hearing instruments, you simply check or uncheck the different button or dial functions and Aura:fit applies pre-defined rules to assign functions against the button or dial behaviours. In addition, there is the possibility to add Mute which has its own dedicated function.

Note: there is no ability to split functions between the ears, i.e. the defined button behaviour is the same whether pressing the buttons on the left or the right hearing instrument.

Show Behaviour

There are five defined behaviour options for the hearing instruments where settings can be assigned, i.e. Standard, Streaming (during notification), Streaming, Bluetooth phone (ringing) and Bluetooth phone (call). Selecting one of the five options updates the Button Behaviour display to show the current functions assigned to each of the short press, long press, or rotary dial options for the selected behaviour.

Button Behaviour

Shows the associated settings for the selected behaviour indicating whether the behaviour is associated with a short press, long press or a turn of the rotary dial.

Button Functions

You can select which button functions are to be enabled on the hearing instruments, choosing from the four available options of Volume, Program Change, Accept/reject call or Mute/unmute mic.

Dial Function

If the hearing instrument configuration includes a rotary dial, this is the only way to control the volume on the HI, i.e. the volume function cannot be applied to either a short or long press of the push button.

Lever / dial

To configure the function of the lever / dial on the hearing instrument(s) (if available):

- Click the drop-down menu under the lever / dial label on the primary screen.

Choose from:

- Volume Control: the lever / dial adjusts the volume level of the hearing instruments.
Note: Wireless synchronization is disabled by default to allow independent adjustment of this control on each ear.
- Smart Balance : the lever / dial adjusts the Smart Balance setting in the hearing instrument.
Note: Wireless synchronization is disabled by default to allow independent adjustment of this control on each ear.
- No function: the lever / dial is disabled on the hearing instrument.
Note: The + / – buttons and scroll wheel on the Smart Control remote are not impacted by the setting of this control.

Note: Only one user control on the hearing instrument can be assigned to perform a particular function. While both the push button and lever/dial can be configured as either a volume control or a Smart Balance control, both controls cannot perform the same function.

IIC / Micro CIC remote

To configure the function of the IIC remote / micro CIC remote (if available):

1. Click the drop-down menu under the IIC / Micro CIC remote function label on the primary screen. Choose from:
 - No function: the IIC / micro CIC remote is disabled.
 - Program change: bring the remote up to each hearing instrument to toggle through the various listening programs.
 - Volume up: bring the remote up to each hearing instrument to increase the volume in steps. Once the hearing instrument reaches the maximum volume, the next step will bring it back to the default volume level.
 - Volume down: bring the remote up to each hearing instrument to decrease the volume in steps. Once the hearing instrument reaches the minimum volume, the next step will bring it back to the default volume level.

Bluetooth

Bluetooth name: the name of the hearing instrument as seen by other Bluetooth devices. If no name is set a default value is used.

Phone ear: configure the hearing instrument that will be used to handle phone calls. If this value is changed, the newly selected hearing instrument will need to be paired to the user's phone after the fitting session has been closed.

Enable adaptive bandwidth: for Vista D and Vista DX only, when conducting a Bluetooth phone call, some phone models result in a user experience where the call recipient hears either garbled or no audio. Disable this feature to resolve the issue.

Note: The Bluetooth name is visible to any Bluetooth device. Be mindful of sensitive information such as client names or personal information when naming the device.

TV Connector

Direct connectivity hearing instruments can connect directly to the TV Connector accessory and you can configure how the devices will behave when they come into range of a TV Connector.

When a TV Connector stream is detected, the associated activation behavior for each option is as follows:

- Automatic - the TV Connector stream is activated automatically
- Manual - the TV Connector stream is added as the last manual program. (Note: the 'Manual' feature is not available for Vista T Rd 13.)
- Manual (with beep) – a beep is heard and the TV Connector stream is added as the last manual program. Additionally with this option, a short press within 15 seconds after the beep will skip all programs and jump directly to the stream.

Note: Default behavior is 'Automatic', and you can hover over the text to see a popup explaining the behaviour.

Volume Settings

1. Click the **Volume Settings** task item at the bottom of the screen.
2. Select the desired amount of increase in volume using the Volume Control Up drop-down menu.
3. Select the desired amount of decrease in volume using the Volume Control Down drop-down menu.

Note: The value selected in the volume control up and down boxes determines the volume control range provided to the client (as displayed in the volume settings task box). Each adjustment of the volume control using a remote or on the hearing instruments is 2 dB.

Start up Settings

1. Click the **Start up Settings** task item at the bottom of the screen.
2. Select the desired Start up Program from the drop-down menu.
3. Select the desired Start up Delay from the drop-down menu.
4. For Li-ion rechargeable units, you can enable/disable the automatic behaviour to turn the units on when removing them from the charger unit.

Data logging

1. Click the **Data logging** task item at the bottom of the screen.
2. Select the desired data logging and learning parameters (if applicable) from the drop-down menu.

Program Toggle Exceptions

1. Click the **Program Toggle Exceptions** task item at the bottom of the screen.
2. Uncheck the boxes to indicate which of the following you would like to exclude from the program toggle sequence:
 - The Automatic Program / Auto Sound Control
 - The Easy telephone program (if applicable to the product being fitted)
 - The Auto DAI program (if applicable to the product being fitted)

Beeps

Select the Beeps screen to demonstrate and configure the various user notification beeps in the hearing instrument. These options include beep setup, beep enabling, and trial duration (Vista:trial devices only).

To demonstrate beeps:

There are a number of play buttons for various user notifications. Depending on the product being fitted, you have the option of playing beeps associated with:

- Program Change: choose the desired program to demo using the drop-down menu.
- Easy / Automatic Events: choose from Easy telephone, uPhone activation, uAudio Bluetooth activation, uAudio audio jack input activation, uFM activation, or Smart Control telephone button activation.
- Warnings / Alerts: choose from low battery, Teach (if applicable), Smart Alert notification alerts (if applicable) and TV Connector available (if applicable).
- Trial Duration: play the 'End of trial period' beeps that will be generated in Vista:trial devices once the trial period has expired.

- Volume / Smart Balance : choose from: volume min/max, volume ideal (default), Smart Balance min/max, Smart Balance ideal (default), volume step change, Smart Balance step change.
- Phone Ring Tones: play provided ring tone.
- Startup Sound: play the startup sound.

Note: The phone ring tone notification is generated during uPhone activation with phones supporting this feature.

To play the selected notification through the hearing instrument, click the right or left play buttons beside the chosen drop-down menu.

Beep Setup

1. Click the **Beep Setup** task item at the bottom of the screen.
2. Select the intensity level from the drop-down menu.
Choose from: **Very Soft**, **Soft**, **Moderate**, **Loud**, or **Very Loud**.
3. Select the frequency from the drop-down menu.
Choose from: **Low**, **Medium** or **High**.

Beep Enabling

1. Click the **Beep Enabling** task item at the bottom of the screen.
2. Select the beep notification types you would like active for the client. Choose from: **Program Change**, **Start Up Sound** (initial sound which occurs upon the powering up of the hearing instruments), **Easy / Automatic Events** (events listed under the demo drop-down menu for this category), **VC & Smart Balance Min/Max** or **Volume Control Min/Max** (end of range), **VC & Smart Balance steps** or **Volume Control steps** (beeps that occur each time these user controls are changed), and **Warning / Alerts** (events listed under the demo drop- down menu for this category).

Note: The beeps that play at the end of the trial period with Vista:trial hearing instruments cannot be disabled. When the end of trial period beeps start to sound, you can turn off the repeated beeps by resetting the trial period, i.e. by detecting and then saving to the hearing instruments.

Trial Duration

Note: This option is available with Vista:trial devices.

1. Click the **Trial Duration** task item at the bottom of the screen.
2. Select the desired trial duration before the 'End of trial period' beeps are generated in the hearing instruments.

Note: Once the trial duration has been exceeded, repeated beeps (End of trial period beeps) will be generated. Initially, these beeps will occur every hour for ~ 3 days of use, after which the instruments will repeatedly generate the beeps every minute.

Remote adjust Setup

The remote adjust setup screen provides an easy way for you to set up remote adjust for your clients. Follow the steps below.

1. Log into myUnitron account
2. Enable remote adjust
3. Generate an activation code
4. Press Enable to set up the client in remote adjust

Note: Step 1 and 2 require a one-time setup through the myUnitron login dialog. Once hearing instruments are detected, step 3 is completed automatically. Step 4 is the only step that needs to be done for every client during an initial fitting.

Note: Remote adjust is only available for wireless Vista DX products and newer

Fitting Summary

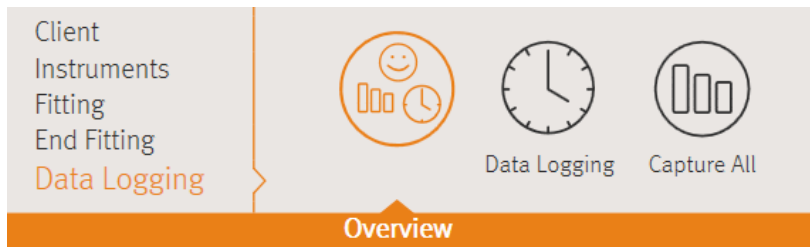
The Fitting Summary screen provides a succinct overview of primary fitting-related items in an easy-to-read table for each hearing instrument. The table provides an opportunity for a final check of the fitting settings and general status prior to printing, saving and closing the session.

The default table information is dependent on the product being fitted and can include: Program List, Client Controls, General Status, Accessories, and Indicators. If desired, additional details can be viewed by clicking the More Info button which then displays Fitting Settings and Acoustics.

To end the fitting:

1. Select the check boxes for the items you would like to print (e.g., Fitting reports, Getting Started Guides for hearing instruments and accessories, if applicable). The client's language for the Getting Started Guides can be selected. Click the Send Email or Print buttons to provide materials to your client.
2. Click the **Save** button. Select the check boxes for the items that you would like to save (e.g., Save to hearing instruments, Save to database, Save to accessories) on the save dialog pop-up window. Click Save and then Close in the save confirmation window.
 Note: Clicking the Save icon on the primary tool bar or accessing the Save function in the main menu also provides the ability to save to the hearing instruments, database, and accessories.
3. To close the session, click the Close Session button. If you have not yet saved the fitting, the save dialog pop-up window will appear. When running Aura:fit under NOAH click the Exit Aura:fit button.
4. After closing the session:
 - If using iCube II/iCube, restart your hearing instrument(s) by opening and closing the battery door(s).
 - If using NOAHlink or HI-PRO, remove the programming cable, insert the batteries and close the battery door.

Data logging menu



Observe either clients' usage patterns, Lifestyle in this menu. At the initial fitting, no Usage (also known as data logging) or Capture All information (also known as Lifestyle information) will be available. Capture All is only available for Vista N platform products and newer.

Overview

The overview screen provides an at a glance view of the clients usage, lifestyle and experience with their hearing instruments.

The left hand pane of the screen shows:

Quick Links

Buttons linking to commonly used features in follow up fittings:

- Soft/Mod/Loud Controls
- MPO/Gain/CR Controls
- Adaptation Manager
- App Equalizer

Difficult Situation Predictions

Your client's data is fed in to a Machine Learning model trained with anonymized client usage, fitting and demographic data gathered from thousands of user sessions where the Fitting Advice tool has been used to indicate a plain-language, situational 'Sound Type' that was of concern to their client. The model produces a prediction of the top three difficult 'sound types' that your client may be likely to experience.

NOTE: This feature is only available for users who have the Aura:fit improvement program turned on and who have an active internet connection.

Usage (Data logging)

Bar chart

The bar chart located in the centre of the screen shows the % of time spent in automatic and manual programs. For products without an automatic program, the bar chart will show the % of time spent within each manual program. Data is averaged across left and right hearing instruments to simplify the information in the table. Ear specific data logging can be found in the table located immediately below the bar chart.

Table

This table provides information related to average usage and volume control adjustments across all programs. When activated, this table will also provide information related to tinnitus masker adjustments.

In the case of logged data, you can selectively apply logged data to the automatic program, manual programs, or the wireless programs with the exception of tinnitus masker. Adjustments to the tinnitus masker can only be made manually under Configure Features.

Note: Products with self learning will have a remove button.

History

You have the option of viewing data logging history from previous sessions. To do so, select the desired session within the drop box provided.

Usage

The usage summary in the left pane provides an average number of hours each hearing instrument has been worn per day, based on the number of days between sessions.

Capture All

The Capture All feature allows clinician to view the clients listening environments across all 7 environments regardless of the technology level of the hearing instrument worn.

Capture All bar chart

The bar chart is generated based on the percentage of time the client spent in each type of listening environment. Colored sections of the graph indicate their availability for the technology level selected.

History

Allows you to view Capture All history from previous sessions. To do so, select the desired session within the drop box provided.

Technology Level

Clicking a technology level other than the currently selected level will a) update the bar chart to indicate the listening environments available at that technology level, and b) update the feature list to show the differentiation in features between the current technology level and the selected technology level.

Curve display options

All of the curves displayed from Aura:fit v3.1 onwards are based on targets that are generated assuming a speech input instead of the pure tone inputs previously used.

On any screen displaying a graph, you can change the items shown by clicking the curve display icon above the upper right graph. Adjustments made here are applied to both the left and right graphs.

Depending on the section of the software, you will have the option of choosing:

- Gain: insertion gain, real-ear, 2cc or ear simulator. Also, option of showing feedback threshold obtained during the feedback test.

- Output: HL real-ear, SPL real-ear, SPL 2cc or SPL ear simulator. Also, option of showing HTL (hearing threshold) and UCL (uncomfortable loudness) data.
- Input / Output: SPL real ear, SPL 2cc or SPL ear simulator, each available at .5, 1, 2, 4, 6, 8 kHz
- Audiogram: displays current audiogram used in software
- Show target: displays the target curve for the current view
- Show calculated response: displays the original quick fitted hearing instrument response for the current view
- Verification graph: (available in Pre-Fitting screen only if selected under Options > Preferences > Fitting Session > Fitting) displays hearing instrument response and target curves based on speech inputs at 50 / 65 / 80 dB SPL. You have the option of showing curves in gain (insertion gain; 2cc coupler) or output (SPL real-ear)

Note: When the mouse cursor is positioned over items on the graph, a legend appears providing further details related to that item.

Main Menu

The main menu is available at the top of each screen and consists of these options:

File

Import Client: (standalone only): imports previously exported Aura:fit client data. After selecting this option, you must select the source file location from the provided window.

Export Client: exports Aura:fit client data from the software. After selecting this option, you must choose the destination and name of the exported file. Export options include:

- Export all clients: exports all client files from the Aura:fit database
- Export anonymously: removes client name from the exported file and assigns an 'anonymous' file name identifier.
- Export to Noah: exports client file in a format that can be imported into NOAH.

Print: opens a window that shows the documents available such as the Fitting Reports and the Getting Started Guides (hearing instruments and accessories, if applicable). The client's language for the Getting Started Guides can be selected. The selected documents can be previewed, printed or saved from this window.

Send Getting Started Email: opens a window that shows information that can be sent to the client.

Software Updates: opens the Welcome Screen to the Software Updates tab.

Save: saves the current fitting information. Choose from Save to hearing instrument, Save to database, or Save to accessories (if accessory added to fitting).

Close Session: exits the current open session. You will be prompted to save if you haven't done so already.

Close Aura:fit: exits the software application. You will be prompted to save your fitting information if you have not done so before closing Aura:fit.

Forms

Repair Form: follow the on screen instructions to complete a repair form.

Remake Form: follow the on screen instructions to complete a remake form.

Loss and Damage Form: follow the on screen instructions to complete a loss and damage form.

Hearing Instrument

Save: saves the current fitting information. Choose from Save to hearing instrument, Save to database, or Save to accessories (if accessory added to fitting).

Test Mode: sets the hearing instrument into a test mode so you can compare the electroacoustic performance of the device to the published ANSI / IEC specification data sheets.

Verification Mode: Sets the hearing instrument into a verification mode to allow testing without the interference of adaptive features. There are 3 options:

- Adaptive features active: default state.
- Real Ear Verification: all adaptive features are disabled except for Natural Sound and input selection.
- 2cc Coupler Verification: all adaptive features and input selection are disabled.

HI Update: checks if newer functionality is available for the connected hearing instrument. If an update is available, the instrument maintains its fine tuning and new features become enabled.

HI Repair / Reset: opens a wizard to reset the firmware of a hearing instrument. Only use this when directed by an error message. If this was not successful, please try again before sending the hearing instrument back to your distributor. The client record stored in the database will not be affected.

Transfer Fitting: provides instructions on how to transfer a fitting to or from another hearing instrument.

Delete Wireless Pairing: Deletes all pairings with phones or TV Connector on the hearing instruments.

Options

Preferences

Generates the user preferences dialog box with the following options:

General

- Language and Region: select the preferred language for text and sound files. Driving orientation can be selected for your country.
- Presentation: select your preferred level of animations.
- Support: enable/disable logging of a) Aura:fit information for support, and b) anonymous usage data for the Aura:fit Improvement Program
- Trial or Select: Choose the appropriate trial period defaults for Vista:trial and Vista:upgrade.

- Email templates: create your own email template when sending support information to client.
- Internet: configure internet connection settings

Fitting Session

- Diagnostics: choose the preferred bone conduction symbol and view/adjust the DSL v5 ABR nHL to eHL correction values.
- Fitting: indicate if the speech verification graph option will be available from the curve display options on the Pre-Fitting screen. Under tuning, selecting the check box will display TK for soft speech on tuning screen. Configure Features – allows you to display the option to ‘Enable Soft Speech Intensifier’ and set the value to on or off. Initial Configuration – allows you to enable/disable the automatic display of the Initial Configuration workflow following detection of new hearing instruments. Choose whether to enable password protection to keep fitting information confidential. Following activation of this option, you can insert their desired password into the software. If the Aura:fit software version you are using does not have the same password as the one saved to the hearing instrument, you will be required to enter the correct code to proceed with the fitting. Note: Password protection prevents reading of information from a hearing instrument but does not prevent a clinician from creating a new fitting on that same device. Certain features can be activated using a feature activation key.
- Presentation: select the preferred tuning values display (absolute or relative); select visibility options for CR values; hide or show preparation instructions for the feedback wizard and the in situ test wizard; select whether or not the pediatric fitting mode recommendation pop-up box is displayed; and choose whether or not to maintain the aspect ratio of graphs.
- Pediatric Modes: View and / or edit the fitting mode defaults for various pediatric age ranges using the provided tables. Modify aspects related to fitting formula, global parameters, hearing instrument options, program settings, and program options.
- Standard Mode: View and / or edit the fitting mode defaults for standard mode (adults) using the provided tables. Modify aspects related to fitting formula, global parameters, hearing instrument options, program settings, and program options.

Reports

- Forms: enter clinic information.
- Graphs: select the preferred graph type: Output or Gain for the Fitting Report. For the Output graph type, choose from: HL, SPL Real Ear, SPL 2cc, SPL Ear Simulator. For the Gain graph type, choose from: 2cc, Ear Simulator, Real Ear, Insertion Gain.

Fitting Device

- NOAHlink: enable/disable the NOAHlink, perform a system check, configure properties, or start the pairing wizard.
- Noahlink Wireless: enable/disable the Noahlink Wireless, check connection.
- HI-PRO: enable/disable the HI-PRO, perform a system check or configure.

- iCube: enable/disable the iCube / iCube II, perform a system check via USB or wireless connection, upgrade firmware, or start the pairing wizard.

Sound System

- Sound Output: select either stereo speaker or Aurical.
- Calibration: calibrate to ensure media player sound files are presented at the correct level. Manual calibration uses a sound level meter. Play the calibration noise and adjust the Aura:fit volume slider and/or Windows volume slider until you measure 80 dB (A) at the listening position (where the client will sit). For Automatic calibration start the calibration wizard. This process uses the hearing instrument to measure and adjust the sound level.

iCube Configuration

Opens the iCube configuration section in Preferences. The screen provides ability to enable/disable the iCube / iCube II, perform a system check via USB or wireless connection, upgrade firmware or start the pairing wizard (i.e., add an iCube).

Accessory Firmware Update

Opens a wizard used to update accessories. The accessory must be connected to the computer using an USB cable. After detecting the device, Aura:fit will offer available firmware updates.

Change uDirect 2 Language Pack

Opens up a wizard that will help you select a language for the speech notifications.

Help

Training Session: is used to demonstrate the full functionality of each screen as if hearing instruments were actually being programmed. It is useful for a better demonstration of such features as the feedback optimization test and Lifestyle (Capture All) data.

- Selecting Training Session from the Help menu generates a dialog box where several training scenarios can be selected. This includes a free-flow scenario and a list of sample training scenarios with pre-defined data. Selecting a training scenario may prompt you to save your current fitting session.
- For a new client, the preferred hearing instrument technology level and style must be chosen on the Selection screen to populate the fitting session. For sample clients, the fitting session will be populated and ready to use. It is not necessary to Detect the instruments to generate Data logging information, however, detection is necessary to access other things such as the Feedback Optimization test. The fitting session proceeds from there as if the chosen instruments were actually connected to Aura:fit.
- The Training Session cannot be saved.

Support

- Generate Support Package: produces a .zip file with relevant support information that can be sent to the Unitron Software Support team, for troubleshooting purposes.

- Homologation Settings: sets the hearing instrument into a test mode used for certification of product parameters.
- Export Client for Support: exports client data from the software for support/troubleshooting purposes.
- Register with NOAH4: register Aura:fit with NOAH4 so that it will show up as a module within NOAH4.
- Unregister from NOAH4: unregister Aura:fit from NOAH4 so that it will no longer show up as a module within NOAH4.
- TeamViewer: opens the TeamViewer Quick Support remote control application.

About DSL v5: generates a dialog box displaying notices related to the DSL v5 formula.

About Aura:fit: generates a dialog box displaying the software version and copyright notices.