

# **ARIZONA**

## **MOTOR VEHICLE CRASH FACTS**

### **2006**





# 2006 Motor Vehicle Crash Facts for the State of Arizona

*Prepared by:  
The Arizona Department of Transportation  
Motor Vehicle Division*



This publication is an annual statistical review of the motor vehicle crashes in the State of Arizona for the calendar year 2006. The results are compiled from Arizona Traffic Accident Reports submitted to the Arizona Department of Transportation by state, county, city, tribal, and other law enforcement agencies. Specific inquiries regarding the data in this report should be directed to:

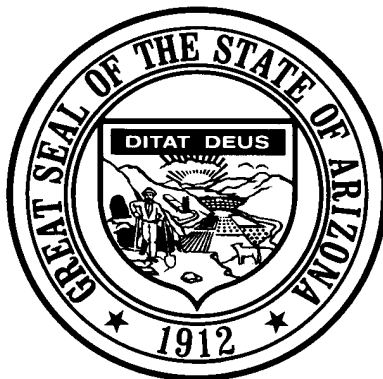
**The Arizona Department of Transportation  
Motor Vehicle Division  
Traffic Records Section  
206 S. 17<sup>th</sup> Ave. MD 064R  
Phoenix, AZ 85007**

**E-mail: [azcrashfacts@azdot.gov](mailto:azcrashfacts@azdot.gov)**

**Phone: (602) 712-3570**

In order to provide the most current information, preliminary data is utilized when necessary. For this reason, previous or future reports may differ slightly and we encourage you to refer to the latest issue of Motor Vehicle Crash Facts.

This issue as well as previous issues of this publication may be viewed and downloaded from ADOT's Web Site at:  
<http://www.azdot.gov/mvd/Statistics/crash/index.asp>



**Janet Napolitano**  
**Governor**

**Arizona Department of Transportation**

**Victor Mendez**  
Director

**Motor Vehicle Division**  
**Stacey K. Stanton**  
Director

**State Transportation Board**

**S.L. Schorr – District 2**  
Chairman

**Delbert Householder – District 4**  
Vice Chairman

Members

**Felipe Andres Zubia – District 1**

**S.L. Schorr – District 2**

**Barbara Ann (Bobbie) Lundstrom – District 3**

**Delbert Householder – District 4**

**Robert Montoya – District 5**

**William J. (Bill) Feldmeier – District 6**

## OVERVIEW

<b>Section 1: – Highlights and Historical Trends .....</b>	<b>1</b>
Total crashes, historical data, economic loss due to crashes, victim demographics, vehicle miles traveled, fatality rates, injuries and fatalities by geographic area, holiday statistics.	
<b>Section 2: – Geographic Location.....</b>	<b>9</b>
Urban and rural crashes by First Harmful Event, crashes by counties and cities, fatalities by county.	
<b>Section 3: – Crash Descriptions .....</b>	<b>16</b>
Single vehicle and multi-vehicle crashes, lighting, road surface, weather, road grade, crashes by time, day, and month.	
<b>Section 4: – Safety Devices .....</b>	<b>22</b>
Use of safety devices by drivers and rear and front seat passengers, child restraint usage. (For helmet use, see Section 8: Motorcycle Crashes)	
<b>Section 5: – Motor Vehicle and Driver Descriptions .....</b>	<b>25</b>
Crashes by vehicle type, hit and run crashes, motor vehicle registrations, licensed drivers by age, persons killed and injured by vehicle type, gender of drivers, license status and age of drivers, driver errors, and physical condition.	
<b>Section 6: – Alcohol Related Crashes.....</b>	<b>31</b>
Alcohol related crashes by severity and manner of collision, first harmful event, vehicle type, light conditions, manner of collision in multi-vehicle crashes, persons killed and injured by age and gender, restraint usage, daytime, weekday, and weekend crashes.	
<b>Section 7: – Pedestrian and Pedalcyclists Crashes.....</b>	<b>39</b>
Severity of injury, age, gender, history, actions of pedestrians killed and injured, physical condition, lighting, and weather conditions of pedestrian and pedalcyclists crashes.	
<b>Section 8: – Motorcycle (MC) Crashes .....</b>	<b>44</b>
Severity of injury, fatalities, and motorcycle registrations, fatality rate, accident type, lighting conditions, road surface, urban and rural crashes, age of operators, license status, operator and passenger helmet usage, age and gender of victims, operator errors, crashes by time, weekday, weekend, and day of week.	
<b>Acknowledgements .....</b>	<b>52</b>

Disclaimer: Please note that due to report parameters and primary criteria required, data results will vary for like categories.

## Table of Contents

<b>Section 1: Highlights and Historical Trends.....</b>	<b>1</b>
Arizona Crash Facts .....	2
Arizona at a Glance – 2006 .....	2
Licensed Drivers, Motor Vehicle Registration and Crash History in Arizona .....	3
Historical Trends – Arizona and the United States .....	3
Statewide Economic Loss Due to Motor Vehicle Crashes .....	4
Traffic Crashes in Arizona by Year.....	5
Victims of Motor Vehicle Crashes .....	6
Arizona’s 2006 Estimated Population .....	6
Victims of Motor Vehicle Crashes (Arizona Residents Only)*** .....	6
Vehicle Miles Traveled .....	7
Arizona vs. U.S. Fatality Rate .....	7
Traffic Fatalities by Geographic Region .....	7
Traffic Injuries by Geographic Region.....	7
Holiday Crash Statistics .....	8
<b>Section 2: Geographic Location.....</b>	<b>9</b>
Crash Severity by First Harmful Event Statewide.....	10
Crashes by County .....	10
Crash Severity by First Harmful Event in Urban Areas .....	11
Crash Severity by First Harmful Event in Rural Areas .....	11
Analysis by Jurisdiction .....	12
Total Fatalities by County for 2005 and 2006.....	15
<b>Section 3: Crash Descriptions .....</b>	<b>16</b>
Manner of Collision in Multi-Vehicle Crashes .....	17
Unusual Road Conditions.....	17
Lighting Conditions.....	17
Weather Conditions .....	18
Road Surface Type .....	18
Road Surface Conditions.....	18
Road Grade.....	18
All Crashes vs. Fatal Crashes by Time of Day - Weekdays.....	19
All Crashes vs. Fatal Crashes by Time of Day - Weekends.....	19
Crashes by Day of Week .....	20
Fatal Crashes by Day of Week .....	20
All Crashes vs. Fatal Crashes by Month .....	20
Crashes by Hour and Day of Week .....	21
<b>Section 4: Safety Devices .....</b>	<b>22</b>
Child Restraint Usage (less than five years old).....	23
Driver Restraint Usage .....	23
Front-Seat Passenger Restraint Usage.....	24
Rear-Seat Passenger Restraint Usage .....	24
<b>Section 5: Motor Vehicle and Driver Descriptions .....</b>	<b>25</b>
Arizona Motor Vehicle Registrations.....	26
Motor Vehicle Crash Involvement by Vehicle Type.....	26
Hit and Run Drivers Involved in Crashes.....	27
Gender of Drivers Involved in Crashes .....	27
License Status of Drivers Involved in Crashes.....	27
Passengers Killed and Injured by Age and Gender* .....	27
Drivers and Occupants Killed and Injured by Vehicle Type.....	28
Drivers Killed and Injured by Age and Gender*.....	28
Licensed Drivers in Arizona by Age .....	29
Driver Involvement by Age.....	29
Driver Errors .....	30
Driver Physical Condition .....	30

# 2006 Arizona Crash Facts Summary

<b>Section 6: Alcohol Related Crashes.....</b>	<b>31</b>
Economic Loss Due to Alcohol Related Crashes in Arizona for 2006 .....	32
Alcohol Related Crash History .....	32
Manner of Collision in Alcohol Related Crashes.....	32
Alcohol Related Crashes by First Harmful Event.....	33
Alcohol Related Crashes by Vehicle Type .....	33
Lighting Conditions in Alcohol Related Crashes.....	34
Road Surface Conditions in Alcohol Related Crashes .....	34
When Alcohol Related Crashes Occurred in 2006.....	34
Driver Involvement by Age in Alcohol Related Crashes.....	35
Gender of Drivers Involved in Alcohol Related Crashes .....	35
Restraint Usage for Drinking Drivers .....	36
Persons Killed and Injured in Alcohol Related Crashes .....	36
All Alcohol Related Crashes vs. Fatal Alcohol Related Crashes - Weekdays .....	37
All Alcohol Related Crashes vs. Fatal Alcohol Related Crashes - Weekends .....	37
Alcohol Related Crashes by Hour and Day of Week .....	38
 <b>Section 7: Pedestrian and Pedalcyclist Crashes .....</b>	 <b>39</b>
Pedestrians Killed and Injured By Age and Gender.....	40
Pedestrian Crashes by Geographic Location.....	40
Pedestrian Crash History.....	40
Pedestrians Killed By Age and Action.....	41
Pedestrians Injured by Age and Action.....	41
Pedestrian Physical Condition in Motor Vehicle Crashes.....	41
Lighting Conditions in Pedestrian Crashes .....	42
Weather Conditions in Pedestrian Crashes .....	42
Pedalcyclists Killed and Injured by Age and Gender.....	42
Pedalcycle Crashes by Geographic Location .....	43
Pedalcycle Crash History.....	43
Lighting Conditions in Pedalcyclist Crashes.....	43
Weather Conditions in Pedalcyclist Crashes.....	43
 <b>Section 8: Motorcycle (MC) Crashes .....</b>	 <b>44</b>
MC Fatalities by Year.....	45
MC Registrations in Arizona .....	45
Fatality Rate per Registered MC.....	45
Percent of MC Crashes to All Crashes.....	45
MC Crashes by First Harmful Event.....	46
Lighting Conditions in MC Crashes .....	46
Road Surface Conditions in MC Crashes.....	46
MC Crashes by Geographic Location .....	47
Operator Involvement by Age in MC Crashes.....	47
Alcohol Related MC Crashes.....	47
MC Operators Involved in Fatal Crashes by License Status .....	48
MC Operator's Helmet Use .....	48
MC Passenger's Helmet Use.....	48
MC Operators and Passengers Killed and Injured .....	49
MC Operator Errors .....	49
All MC Crashes vs. Fatal MC Crashes by Time of Day - Weekdays .....	50
All MC Crashes vs. Fatal MC Crashes by Time of Day - Weekends .....	50
All MC Crashes vs. Fatal MC Crashes by Day of Week .....	51
Alcohol Related MC Crashes vs. Fatal Alcohol Related MC Crashes by Day of Week.....	51
 <b>Acknowledgements .....</b>	 <b>52</b>

## 2006 Arizona Crash Facts Summary

### BREAKDOWN OF ALL CRASHES IN ARIZONA

TOTAL	140,197
FATAL	1,121
INJURY	44,458
PROPERTY DAMAGE ONLY	94,618
RURAL	24,296
URBAN	115,901
ALCOHOL RELATED	7,693
PEDESTRIAN	1,618
PEDALCYCLE	1,815
MOTORCYCLE	3,333
SINGLE VEHICLE	25,629
MULTI-VEHICLE	114,568

### BREAKDOWN OF FATAL CRASHES IN ARIZONA

TOTAL	1,121
ALCOHOL RELATED	266
URBAN	519
RURAL	602
SINGLE VEHICLE	619
MULTI-VEHICLE	502
CRASHES IN THE INTERSECTION OF 2 STREETS	203
ROAD-DEPARTURE CRASHES	418
NUMBER OF TIMES AIRBAGS WERE DEPLOYED	360

### BREAKDOWN OF PERSONS KILLED AND INJURED

TYPE	KILLED	INJURED
IN ALL CRASHES	1,296	68,574
IN ALCOHOL RELATED CRASHES	315	5,534
IN URBAN CRASHES	572	55,507
IN RURAL CRASHES	724	13,067
PEDESTRIANS	170	1,447
PEDALCYCLISTS	29	1,514
MOTORCYCLISTS	155	2,814
USING SAFETY DEVICE	334	52,025
NOT USING SAFETY DEVICE	501	5,961
DRIVERS AGE 24 OR YOUNGER	158	12,032
DRINKING DRIVERS AGE 24 OR YOUNGER	53	1,114

### BREAKDOWN OF CRASHES BY TIME

PEAK MONTH FOR ALL CRASHES	OCTOBER
PEAK DAY FOR ALL CRASHES	FRIDAY
PEAK HOUR FOR ALL CRASHES	4 PM - 5 PM
PEAK MONTH FOR FATAL CRASHES	APRIL
PEAK DAY FOR FATAL CRASHES	SATURDAY
PEAK HOUR FOR FATAL CRASHES	7 PM - 8 PM

### OTHER FACTS

MOST COMMON MANNER OF COLLISION	Rear-End
MOST COMMON FIRST HARMFUL EVENT (OTHER THAN COLLISION WITH OTHER MV)	Fixed Object
MOST COMMON DRIVER VIOLATION	Speed too fast for conditions

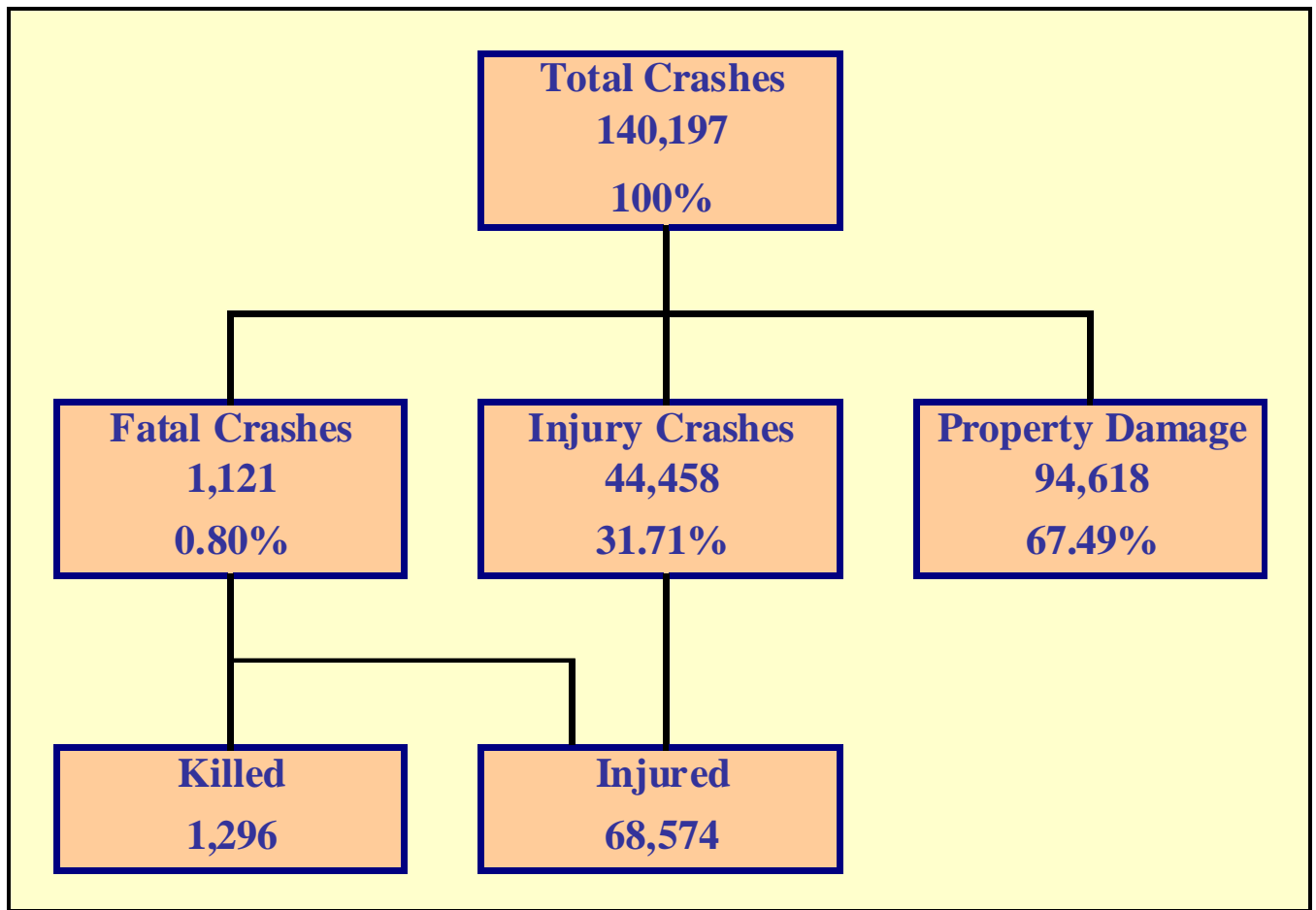


Table 1 - 1

### Arizona Crash Facts

Category	2005	2006	Pct Change
Reported crashes	139,828	140,197	0.26%
Total killed	1,183	1,296	9.55%
Total injured	70,619	68,574	-2.90%
Pedestrians killed	165	170	3.03%
Pedestrians injured	1,476	1,447	-1.96%
Motorcyclists killed	146	155	6.16%
Motorcyclists injured	2,466	2,814	14.11%
Pedalcyclists killed	36	29	-19.44%
Pedalcyclists injured	1,723	1,514	-12.13%
Millions of vehicle miles traveled (VMT)	58,796	62,528	6.35%
Deaths per 100 million VMT	2.01	2.07	3.12%
Injuries per 100 million VMT	120.11	109.67	-8.69%

### Arizona at a Glance – 2006

- Approximately **3.55** persons were killed each day.
- One person was killed every **6.76** hours.
- There were **187.75** persons injured every day.
- One person was injured every **7.67** minutes.
- Drinking drivers were involved in **5.49%** of all crashes.
- Drinking drivers were involved in **23.73%** of all fatal crashes.
- Over **78.90%** of all drinking drivers involved in crashes were males.
- Rural crashes accounted for **17.33%** of all crashes and **53.70%** of all fatal crashes.
- Urban crashes accounted for **82.67%** of all crashes and **46.30%** of all fatal crashes.
- Crashes which occurred during daylight hours (6:00 a.m. to 6:00 p.m.) accounted for **71.9%** of all crashes.
- Motor vehicle crashes resulted in **\$3.67** billion in economic losses to Arizona.
- Children age 14 and younger accounted for **56** fatalities and **5,638** injuries in motor vehicle crashes.

## The Nation In 2006

The population of the United States was estimated at **299,398,484**.

Estimated vehicle miles traveled totaled **2.996 billion** miles.

An estimated **2,575,500** persons were injured.

An estimated **42,642** persons were killed in motor vehicle crashes in the United States.

Table 1 - 2

### Licensed Drivers, Motor Vehicle Registration and Crash History in Arizona

Calendar Year	Total Crashes	Fatal Crashes	Injury Crashes	Property Damage Crashes	Total Persons Killed	Total Persons Injured	Total Licensed Drivers	Total Registered Vehicles
<b>2002</b>	134,887	984	46,389	87,514	1,132	74,542	3,668,704	4,089,662
<b>2003</b>	131,170	974	45,276	84,920	1,121	72,081	3,819,823	4,193,262
<b>2004</b>	138,650	990	46,711	90,949	1,151	73,528	3,784,365	4,364,857
<b>2005</b>	139,828	1,042	45,556	93,230	1,183	70,619	3,963,005	4,556,448
<b>2006</b>	140,197	1,121	44,458	94,618	1,296	68,574	4,091,789	4,748,957

Table 1 - 3

### Historical Trends – Arizona and the United States

Calendar Year	U.S. Fatality Rate*	Arizona Fatality Rate*	Arizona Traffic Deaths	Estimated Motor Vehicle Miles Traveled*	Arizona Fatal Crash Rate*
<b>2002</b>	1.51	2.17	1,132	52,014	1.89
<b>2003</b>	1.50	2.10	1,121	53,345	1.83
<b>2004</b>	1.44	2.01	1,151	57,260	1.73
<b>2005</b>	1.47	2.01	1,183	58,796	1.77
<b>2006</b>	1.42	2.07	1,296	62,528	1.79
Vehicle miles traveled are shown in million miles and rates per 100 million miles					

\*Due to refinements in the method used for the calculation of vehicle miles traveled and the use of preliminary data in some cases, the Arizona crash and fatality rates may differ slightly from previous reports. The most current data is always used at the time of publication, but it may change as new information is received.

## Statewide Economic Loss Due to Motor Vehicle Crashes

Fatalities	\$1,568,160,000
Injuries	\$1,324,050,400
Property Damage Only	\$775,867,600
<b>TOTAL</b>	<b>\$3,668,078,000</b>

Table 1 - 4  
Estimated Economic Loss by County

County	Cost of Traffic Crashes			
	Fatalities	Injuries	PDO	Total
Apache	\$ 41,140,000	\$ 7,900,500	\$ 3,050,400	\$ 52,090,900
Cochise	\$ 42,350,000	\$ 18,722,500	\$ 10,463,200	\$ 71,535,700
Coconino	\$ 102,850,000	\$ 37,423,200	\$ 25,592,200	\$ 165,865,400
Gila	\$ 24,200,000	\$ 11,620,300	\$ 5,625,200	\$ 41,445,500
Graham	\$ 13,310,000	\$ 3,123,000	\$ 1,705,600	\$ 18,138,600
Greenlee	\$ 9,680,000	\$ 1,538,300	\$ 328,000	\$ 11,546,300
La Paz	\$ 32,670,000	\$ 7,695,200	\$ 2,763,400	\$ 43,128,600
Maricopa	\$ 686,070,000	\$ 834,973,200	\$ 525,054,200	\$ 2,046,097,400
Mohave	\$ 72,600,000	\$ 46,271,700	\$ 19,130,600	\$ 138,002,300
Navajo	\$ 50,820,000	\$ 17,453,900	\$ 8,109,800	\$ 76,383,700
Pima	\$ 182,710,000	\$ 212,425,900	\$ 108,838,600	\$ 503,974,500
Pinal	\$ 162,140,000	\$ 48,724,200	\$ 21,467,600	\$ 232,331,800
Santa Cruz	\$ 19,360,000	\$ 6,073,300	\$ 4,059,000	\$ 29,492,300
Yavapai	\$ 83,490,000	\$ 39,391,100	\$ 22,837,000	\$ 145,718,100
Yuma	\$ 44,770,000	\$ 30,714,100	\$ 16,842,800	\$ 92,326,900
<b>TOTALS</b>	<b>\$ 1,568,160,000</b>	<b>\$ 1,324,050,400</b>	<b>\$ 775,867,600</b>	<b>\$ 3,668,078,000</b>

NOTE: Cost estimates are based on the 2006 National Safety Council estimates of the average cost of motor vehicle crashes, deaths, and injuries. These costs are an estimate of wage and productivity losses, medical expenses, administrative expenses, motor vehicle damage, and employer costs. A description of the National Safety Council's current cost estimating procedures may be found in the Technical Appendix of *Injury Facts*®. Effective with the 1993 bulletin, the Council extensively revised its cost estimating procedures.

Table 1 - 5  
Average Economic Cost per Incident

1.	Fatality	\$1,210,000
2.	Incapacitating Injury	\$62,500
3.	Non-incapacitating Injury	\$20,300
4.	Possible Injury	\$11,500
5.	Property Damage Only	\$8,200

## Traffic Crashes in Arizona by Year

Chart 1 - 1  
Total Crashes

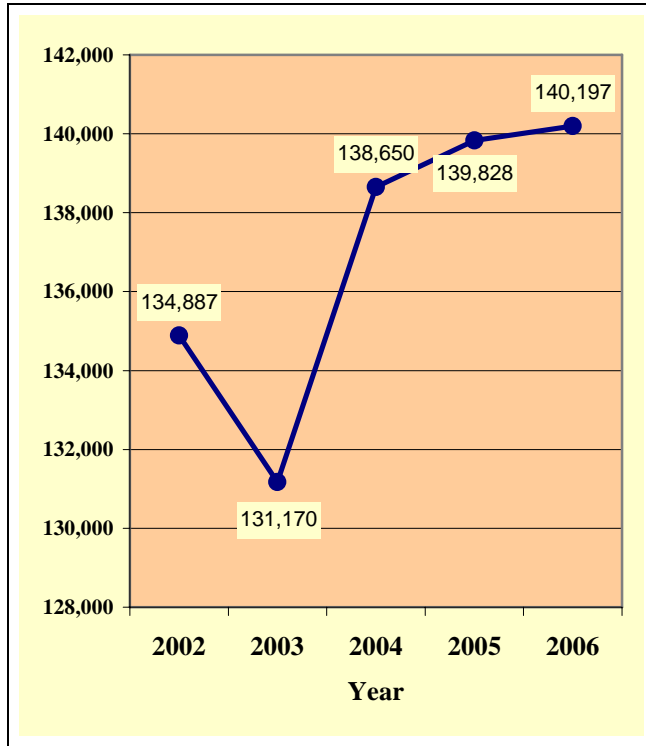


Chart 1 - 2  
Fatal Crashes

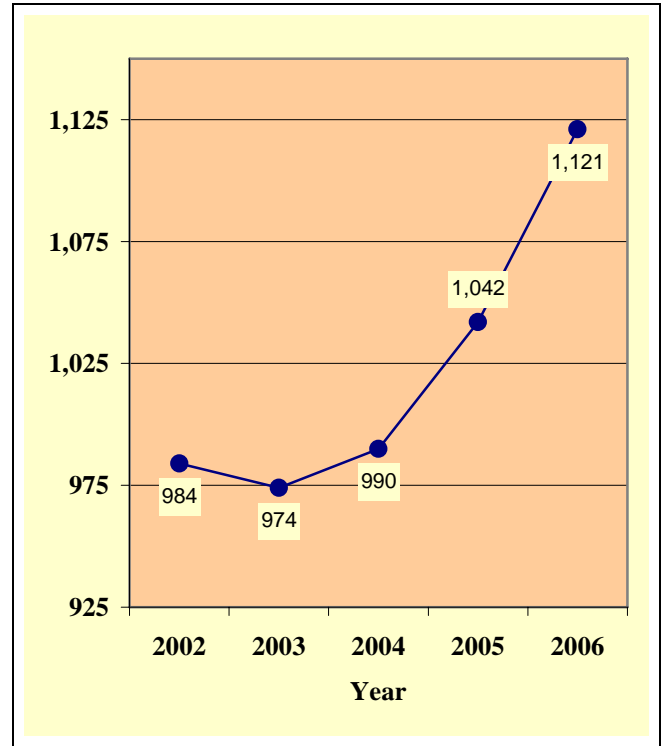


Chart 1 - 3  
Injury Crashes

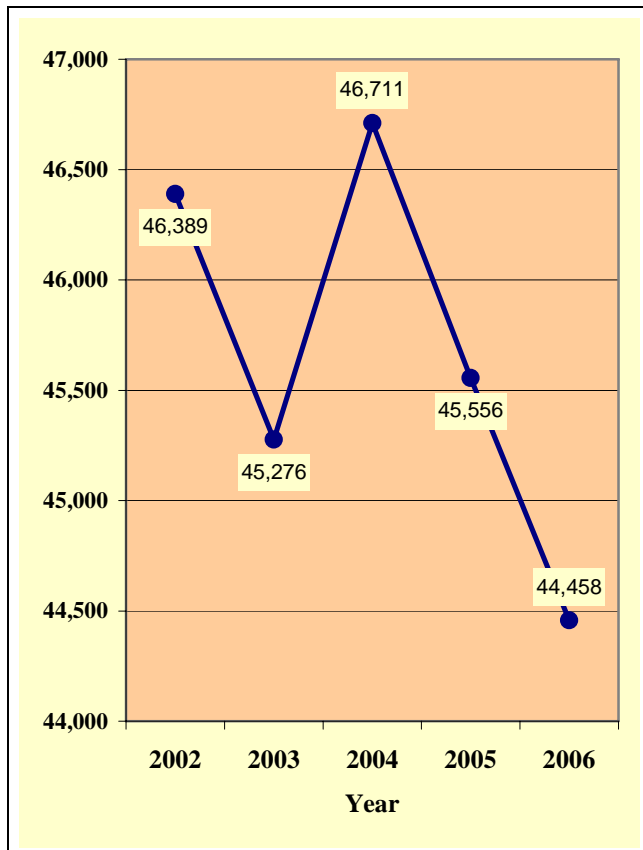


Chart 1 - 4  
Property Damage Only Crashes

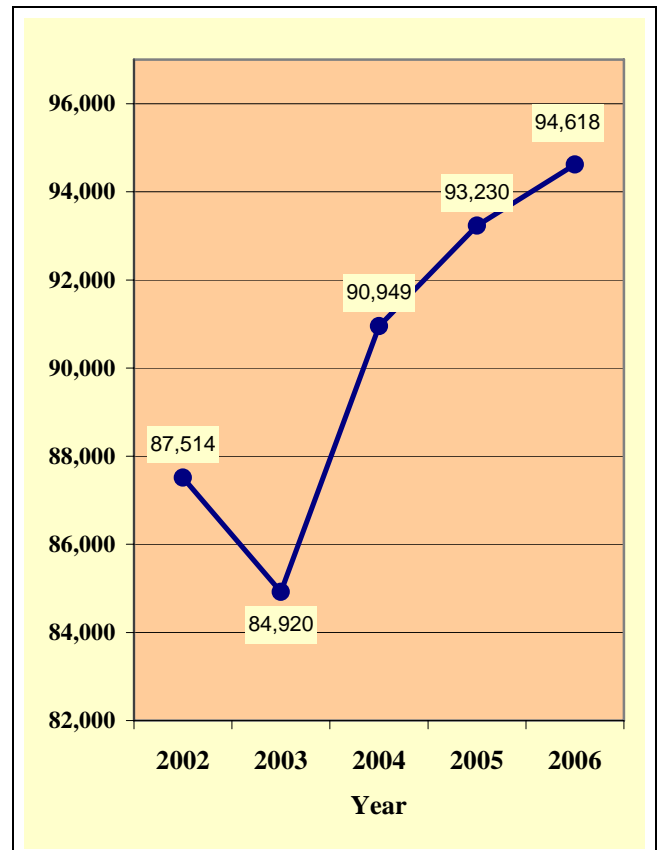


Table 1 - 6  
Victims of Motor Vehicle Crashes\*

Age Of Victim	Persons Killed			Persons Injured			
	Total	Male	Female	Total	Male	Female	Gender Unknown
0-4	19	10	9	1,432	743	687	2
5-9	22	12	10	1,840	891	947	2
10-14	15	9	6	2,366	1,148	1,211	7
15-19	160	102	58	9,204	4,346	4,853	5
20-24	156	117	39	9,620	4,846	4,768	6
25-34	230	178	52	12,757	6,327	6,415	15
35-44	192	140	52	10,626	5,173	5,447	6
45-54	197	138	59	8,753	4,178	4,571	4
55-64	140	88	52	5,764	2,608	3,151	5
65-74	69	48	21	2,760	1,256	1,502	2
75 & Older	94	49	45	2,149	916	1,230	3
Not Stated	2	2	0	1,303	685	534	84
<b>TOTAL</b>	<b>1,296</b>	<b>893</b>	<b>403</b>	<b>68,574</b>	<b>33,117</b>	<b>35,316</b>	<b>141</b>

\*Includes all reported injuries and fatalities occurring on Arizona roadways

Table 1 - 7  
Arizona's 2006 Estimated Population

Race/Ethnic group	Population Percentage	Traffic Crash Fatality Percentage	Population Estimate**
White non-Hispanic	60.94%	53.87%	3,802,214
Hispanic	27.17%	28.37%	1,695,577
Black or African American	3.97%	2.88%	247,888
American Indian or Alaska Native	5.32%	14.14%	331,850
Asian or Pacific Islander	2.60%	0.66%	161,953
Not stated	N/A	0.08%	N/A
<b>TOTAL</b>	<b>100.00%</b>	<b>100.00%</b>	<b>6,239,482</b>

Source: Arizona Department of Health Services, Health Status and Vital Statistics Section.

\*\* Population estimates for 2006 are available at <http://www.azdhs.gov/plan/menu/info/pop/pop06/pd06.htm>

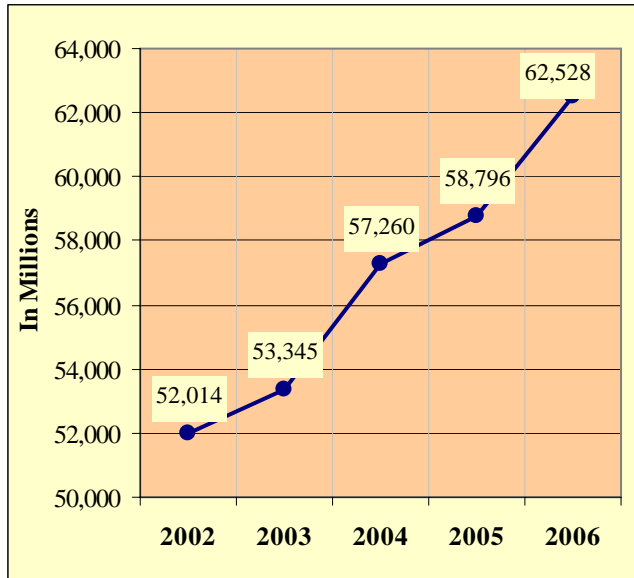
Table 1 - 8  
Victims of Motor Vehicle Crashes (Arizona Residents Only)\*\*\*

Age of Victim	Total Killed	Male	Female	Detail Breakdown:					
				White non-Hispanic	Hispanic or Latino	Black or African American	American Indian or Alaska Native	Asian or Pacific Islander	Ethnicity Unknown
Less Than 1	0	0	0	0	0	0	0	0	0
1-14	54	28	26	19	27	2	6	0	0
15-19	150	94	56	65	53	6	24	1	1
20-44	535	396	139	242	184	16	89	4	0
45-64	320	218	102	200	65	9	45	1	0
65 or older	157	92	65	129	16	2	8	2	0
<b>TOTAL</b>	<b>1,216</b>	<b>828</b>	<b>388</b>	<b>655</b>	<b>345</b>	<b>35</b>	<b>172</b>	<b>8</b>	<b>1</b>

Source: Arizona Department of Health Services, Health Status and Vital Statistics Section.

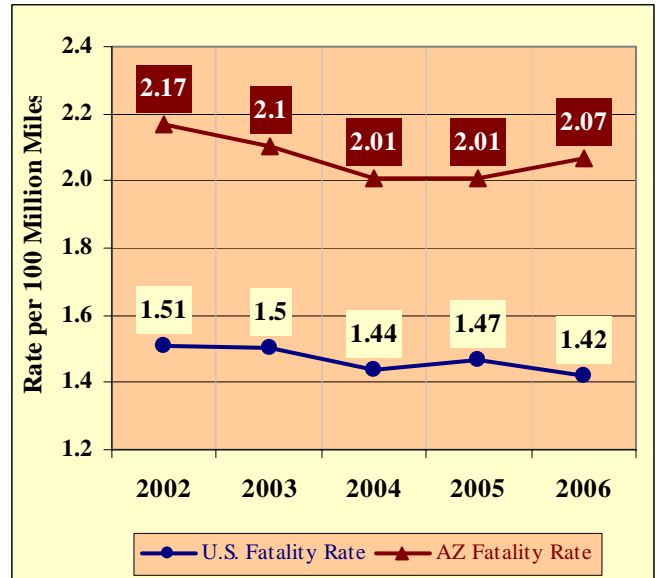
\*\*\*Includes victims of crashes occurring outside Arizona.

Chart 1 - 5  
Vehicle Miles Traveled



Source: <http://tpd.azdot.gov/data/reports/vmt2006.php>

Chart 1 - 6  
Arizona vs. U.S. Fatality Rate



Source for U.S. Fatality Rate: [www.nhtsa.gov](http://www.nhtsa.gov)

Chart 1 - 7  
Traffic Fatalities by Geographic Region

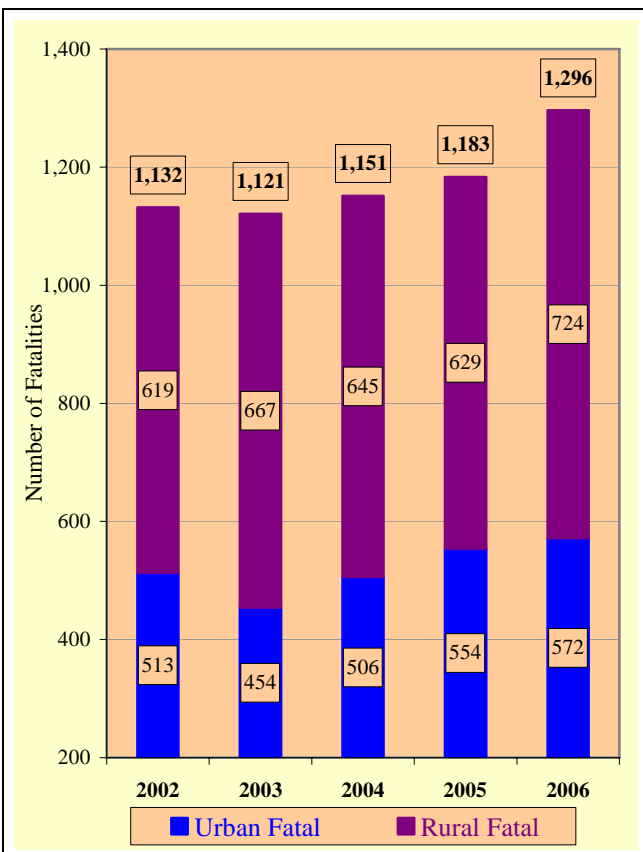
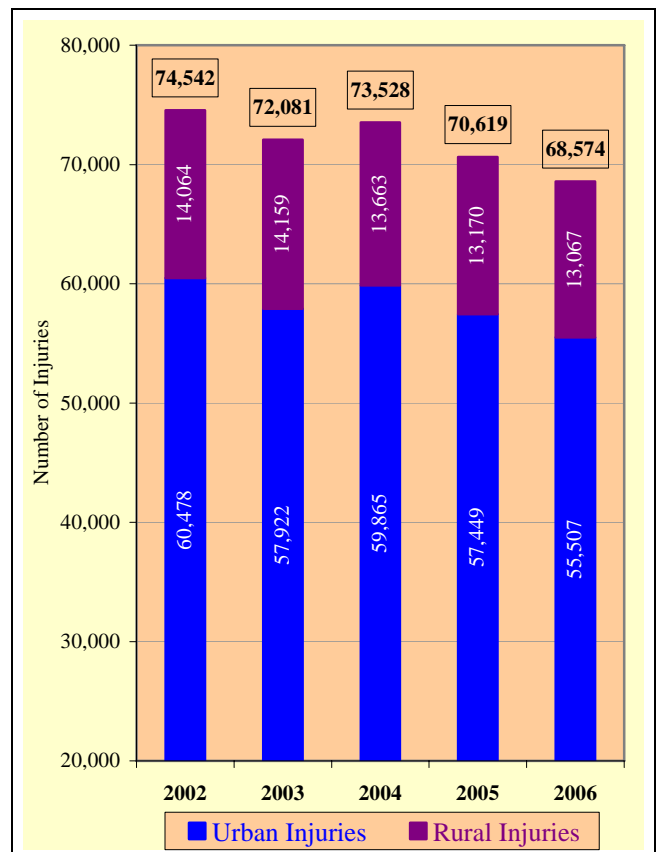


Chart 1 - 8  
Traffic Injuries by Geographic Region



## Section 1: – Highlights and Historical Trends

Table 1 - 9

### Holiday Crash Statistics

Holidays such as Memorial Day, Labor Day, and Thanksgiving are regarded as three or four day weekend holidays for statistical purposes. Holidays such as Christmas, New Year's, and the Fourth of July are celebrated on specific dates, which make the holiday period range from two to five days in length.

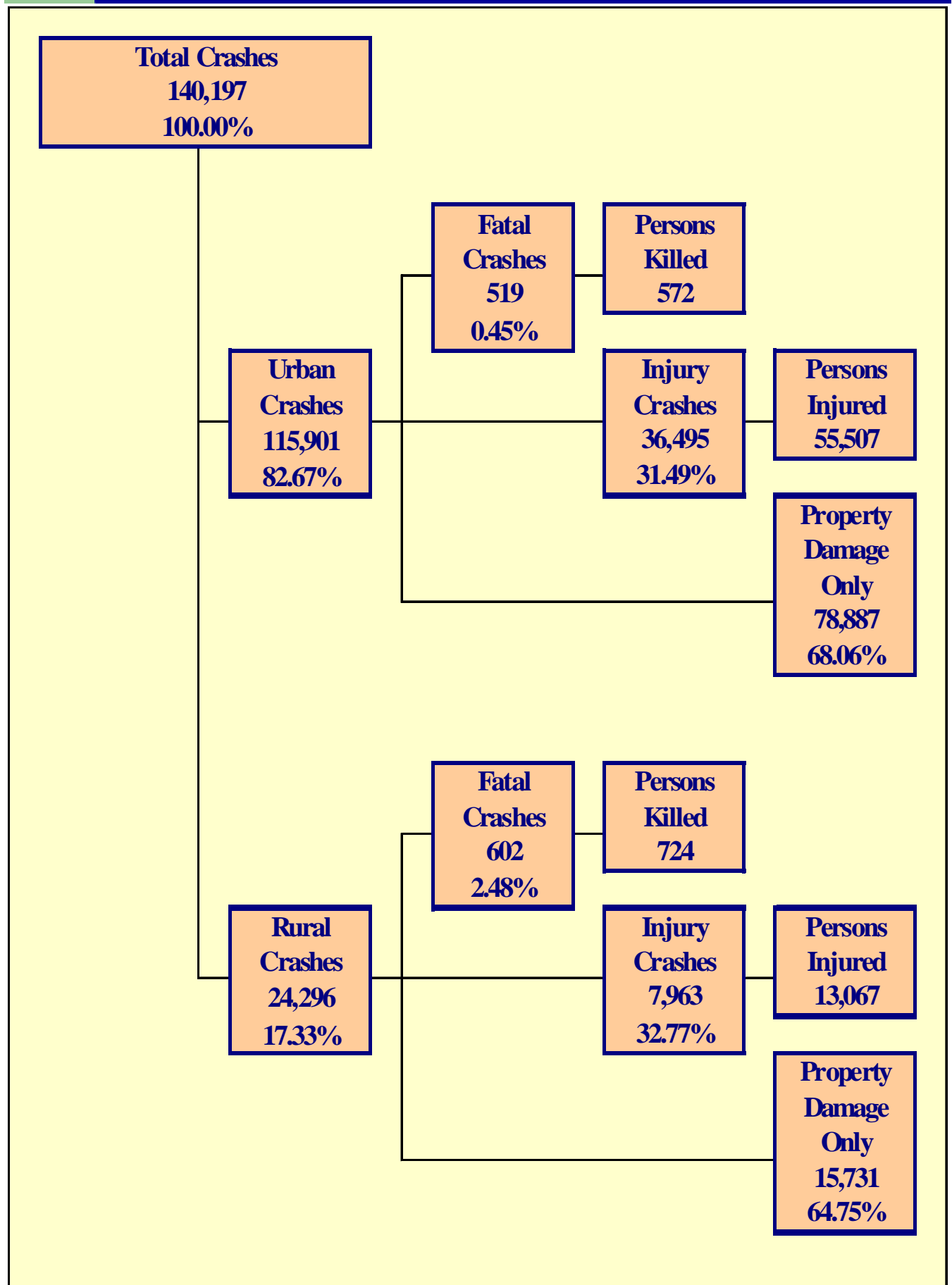
Holiday fatality statistics are based on fatal crashes occurring between 6:00 p.m. on the last working day prior to the holiday and 5:59 a.m. the day following the holiday period. Example: Thanksgiving fatalities are counted from Wednesday evening at 6:00 p.m. through 5:59 a.m. of the following Monday.

2006 Holidays	Beginning at 6:00 p.m.	Ending at 5:59 a.m.	Number of Days	Fatal Crashes	Persons Killed	Alcohol Related Fatal Crashes	Alcohol Related Fatalities
New Year's Day	Friday 12/30/2005	Tuesday 1/3/2006	4	26	28	9	10
Memorial Day	Friday 5/26/2006	Tuesday 5/30/2006	4	12	13	5	6
July 4th	Monday 7/3/2006	Wednesday 7/5/2006	2	5	5	0	0
Labor Day	Friday 9/1/2006	Tuesday 9/5/2006	4	17	24	4	4
Thanksgiving Day	Wednesday 11/22/2006	Monday 11/27/2006	5	13	15	2	3
Christmas Day	Friday 12/22/2006	Tuesday 12/26/2006	4	13	13	3	3

Fatal Crashes by Year	New Year's Day	Memorial Day	July 4th	Labor Day	Thanksgiving	Christmas Day	Total
2002	9	7	4	14	13	5	52
2003	3	10	19	8	22	5	67
2004	15	14	11	10	15	12	77
2005	18	12	18	5	19	6	78
2006	26	12	5	17	13	13	86

Persons Killed	New Year's Day	Memorial Day	July 4th	Labor Day	Thanksgiving	Christmas Day	Total
2002	9	11	4	20	17	7	68
2003	3	12	24	8	25	5	77
2004	18	14	16	14	16	15	93
2005	23	14	20	8	23	6	94
2006	28	13	5	24	15	13	98

Number of Days	New Year's Day	Memorial Day	July 4th	Labor Day	Thanksgiving	Christmas Day	Total
2002	2	4	2	4	5	2	19
2003	2	4	4	4	5	2	21
2004	5	4	4	4	5	4	26
2005	4	4	4	4	5	4	25
2006	4	4	2	4	5	4	23



## Section 2: – Geographic Location

*Fatal Crashes in Arizona (1,121) accounted for 0.80% of all crashes, Injury Crashes (44,458) accounted for 31.71%, and Property Damage Only (PDO) Crashes (94,618) accounted for 67.49%.*

Table 2 - 1

### Crash Severity by First Harmful Event Statewide

FHE Type	Number of Crashes				Number of Persons	
	Total	Fatal	Injury	PDO	Killed	Injured
Overturning	3,129	220	1,785	1,124	274	3,053
Collision with other MV	108,783	450	33,745	74,588	551	54,709
Collision with Pedestrian	1,618	163	1,332	123	164	1,460
Collision with Pedalcyclist	1,815	30	1,503	282	30	1,554
Collision with MV on other Rdway	68	7	31	30	7	83
Animal	1,398	2	189	1,207	2	276
Fixed Object	14,767	191	4,186	10,390	205	5,459
Object in Roadway	85	1	18	66	1	25
Other*	4,741	29	575	4,137	31	698
Miscellaneous**	3,793	28	1,094	2,671	31	1,257
<b>TOTAL</b>	<b>140,197</b>	<b>1,121</b>	<b>44,458</b>	<b>94,618</b>	<b>1,296</b>	<b>68,574</b>
*Includes Collision with Parked Vehicles, Trains, Machinery, and Unknown Objects						
**Includes Collision with Special Devices, Objects dropped from vehicles, Non-fixed Objects, as well as Vehicle Fires						

Table 2 - 2

### Crashes by County

County	Number of Crashes				Number of Persons	
	Total	Fatal	Injury	PDO	Killed	Injured
Apache	597	31	194	372	34	367
Cochise	1,876	33	567	1,276	35	871
Coconino	4,295	71	1,103	3,121	85	1,728
Gila	1,041	16	339	686	20	515
Graham	310	8	94	208	11	168
Greenlee	83	6	37	40	8	53
La Paz	512	24	151	337	27	284
Maricopa	94,159	506	29,622	64,031	567	45,386
Mohave	3,656	50	1,273	2,333	60	1,911
Navajo	1,472	41	442	989	42	739
Pima	20,353	136	6,944	13,273	151	10,665
Pinal	3,948	104	1,226	2,618	134	2,090
Santa Cruz	683	10	178	495	16	291
Yavapai	4,082	59	1,238	2,785	69	1,847
Yuma	3,130	26	1,050	2,054	37	1,659
<b>TOTAL</b>	<b>140,197</b>	<b>1,121</b>	<b>44,458</b>	<b>94,618</b>	<b>1,296</b>	<b>68,574</b>

Table 2 - 3

**Crash Severity by First Harmful Event in Urban Areas**

<b>FHE Type</b>	<b>Number of Crashes</b>				<b>Number of Persons</b>	
	<b>Total</b>	<b>Fatal</b>	<b>Injury</b>	<b>PDO</b>	<b>Killed</b>	<b>Injured</b>
<b>Overturning</b>	848	32	513	303	41	782
<b>Collision with other MV</b>	95,143	265	29,435	65,443	304	47,134
<b>Collision with Pedestrian</b>	1,463	107	1,242	114	107	1,350
<b>Collision with Pedalcyclist</b>	1,673	19	1,394	260	19	1,442
<b>Collision with MV on other Rdway</b>	39	1	18	20	1	39
<b>Animal</b>	204	1	23	180	1	33
<b>Fixed Object</b>	10,336	80	2,736	7,520	84	3,415
<b>Object in Roadway</b>	23	0	5	18	0	8
<b>Other*</b>	4,102	8	464	3,630	8	558
<b>Miscellaneous**</b>	2,070	6	665	1,399	7	746
<b>TOTAL</b>	<b>115,901</b>	<b>519</b>	<b>36,495</b>	<b>78,887</b>	<b>572</b>	<b>55,507</b>
*Includes Collision with Parked Vehicles, Trains, Machinery, and Unknown Objects						
**Includes Collision with Special Devices, Objects dropped from vehicles, Non-fixed Objects, as well as Vehicle Fires						

Table 2 - 4

**Crash Severity by First Harmful Event in Rural Areas**

<b>FHE Type</b>	<b>Number of Crashes</b>				<b>Number of Persons</b>	
	<b>Total</b>	<b>Fatal</b>	<b>Injury</b>	<b>PDO</b>	<b>Killed</b>	<b>Injured</b>
<b>Overturning</b>	2,281	188	1,272	821	233	2,271
<b>Collision with other MV</b>	13,640	185	4,310	9,145	247	7,575
<b>Collision with Pedestrian</b>	155	56	90	9	57	110
<b>Collision with Pedalcyclist</b>	142	11	109	22	11	112
<b>Collision with MV on other Rdway</b>	29	6	13	10	6	44
<b>Animal</b>	1,194	1	166	1,027	1	243
<b>Fixed Object</b>	4,431	111	1,450	2,870	121	2,044
<b>Object in Roadway</b>	62	1	13	48	1	17
<b>Other*</b>	639	21	111	507	23	140
<b>Miscellaneous**</b>	1,723	22	429	1,272	24	511
<b>TOTAL</b>	<b>24,296</b>	<b>602</b>	<b>7,963</b>	<b>15,731</b>	<b>724</b>	<b>13,067</b>
*Includes Collision with Parked Vehicles, Trains, Machinery, and Unknown Objects						
**Includes Collision with Special Devices, Objects dropped from vehicles, Non-fixed Objects, as well as Vehicle Fires						

*While urban crashes in Arizona (115,901) accounted for 82.67% of all crashes, they accounted for 46.30% of all fatal crashes (519) occurring in 2006.*

*While rural crashes in Arizona (24,296) accounted for 17.33% of all crashes, they accounted for 53.70% of all fatal crashes (602) occurring in 2006.*

## Section 2: – Geographic Location

Table 2 - 5

### Analysis by Jurisdiction

COUNTIES Cities	Number of Crashes				No. of Persons		Alcohol Related		
	Total	Fatal	Injury	PDO	Killed	Injured	Crashes	Killed	Injured
Apache County	134	13	50	71	14	94	26	6	31
Apache County State Rural Roads	369	17	127	225	19	244	34	3	48
Eagar	42	1	5	36	1	6	3	0	2
St. Johns	23	0	8	15	0	16	4	0	3
Springerville	29	0	4	25	0	7	2	0	5
<b>TOTAL</b>	<b>597</b>	<b>31</b>	<b>194</b>	<b>372</b>	<b>34</b>	<b>367</b>	<b>69</b>	<b>9</b>	<b>89</b>

Cochise County	203	3	65	135	3	100	13	2	14
Cochise County State Rural Roads	459	17	154	288	19	276	15	3	8
Benson	92	4	22	66	4	32	4	1	3
Bisbee	25	0	10	15	0	21	2	0	0
Douglas	224	0	44	180	0	63	15	0	5
Huachuca City	14	0	9	5	0	12	1	0	0
Sierra Vista	819	7	254	558	7	357	26	0	12
Tombstone	3	2	0	1	2	0	0	0	0
Willcox	37	0	9	28	0	10	3	0	1
<b>TOTAL</b>	<b>1,876</b>	<b>33</b>	<b>567</b>	<b>1,276</b>	<b>35</b>	<b>871</b>	<b>79</b>	<b>6</b>	<b>43</b>

Coconino County	321	15	112	194	16	187	27	2	29
Coconino Co. State Rural Roads	1,116	51	336	729	64	609	68	15	70
Flagstaff	2,362	2	546	1,814	2	779	129	0	82
Fredonia	4	0	0	4	0	0	1	0	0
Williams	97	0	21	76	0	29	1	0	0
Page	99	0	29	70	0	38	7	0	2
Sedona	296	3	59	234	3	86	15	0	11
<b>TOTAL</b>	<b>4,295</b>	<b>71</b>	<b>1,103</b>	<b>3,121</b>	<b>85</b>	<b>1,728</b>	<b>248</b>	<b>17</b>	<b>194</b>

Gila County	115	2	44	69	2	56	8	0	8
Gila County State Rural Roads	497	12	168	317	16	261	36	3	33
Globe	178	0	51	127	0	85	13	0	7
Hayden	3	0	2	1	0	2	2	0	1
Miami	31	0	8	23	0	11	2	0	1
Payson	215	2	66	147	2	100	15	0	9
Winkelman	2	0	0	2	0	0	1	0	0
<b>TOTAL</b>	<b>1,041</b>	<b>16</b>	<b>339</b>	<b>686</b>	<b>20</b>	<b>515</b>	<b>77</b>	<b>3</b>	<b>59</b>

Graham County	60	4	21	35	5	39	9	3	8
Graham County State Rural Roads	93	3	28	62	5	52	10	1	7
Pima	9	1	1	7	1	1	0	0	0
Safford	90	0	25	65	0	48	9	0	8
Thatcher	58	0	19	39	0	28	6	0	7
<b>TOTAL</b>	<b>310</b>	<b>8</b>	<b>94</b>	<b>208</b>	<b>11</b>	<b>168</b>	<b>34</b>	<b>4</b>	<b>30</b>

Greenlee County	1	0	1	0	0	3	1	0	3
Greenlee Co. State Rural Roads	76	5	35	36	7	48	10	1	9
Clifton	3	0	0	3	0	0	0	0	0
Duncan	3	1	1	1	1	2	2	1	2
<b>TOTAL</b>	<b>83</b>	<b>6</b>	<b>37</b>	<b>40</b>	<b>8</b>	<b>53</b>	<b>13</b>	<b>2</b>	<b>14</b>

Table 2 - 5

## Analysis by Jurisdiction

COUNTIES Cities	Number of Crashes				No. of Persons		Alcohol Related		
	Total	Fatal	Injury	PDO	Killed	Injured	Crashes	Killed	Injured
La Paz County	51	6	16	29	6	28	7	1	3
La Paz County State Rural Roads	341	13	110	218	13	198	18	1	13
Parker	69	3	11	55	6	21	3	1	4
Quartzite	51	2	14	35	2	37	3	1	5
<b>TOTAL</b>	<b>512</b>	<b>24</b>	<b>151</b>	<b>337</b>	<b>27</b>	<b>284</b>	<b>31</b>	<b>4</b>	<b>25</b>

Maricopa County	3,905	61	1,346	2,498	65	2,053	241	24	187
Maricopa Co. State Rural Roads	2,756	41	888	1,827	56	1,481	118	10	100
Avondale	1,314	8	287	1,019	9	442	60	1	52
Buckeye	336	7	118	211	11	223	17	2	9
Cave Creek	70	1	29	40	1	48	6	0	3
Chandler	2,400	14	632	1,754	14	932	127	4	67
El Mirage	329	2	88	239	2	130	21	2	16
Gila Bend	40	2	11	27	4	24	1	0	4
Gilbert	2,566	9	771	1,786	11	1,118	114	1	53
Glendale	5,910	24	1,662	4,224	24	2,487	284	4	175
Goodyear	1,170	2	345	823	2	553	49	1	46
Mesa	10,140	57	2,959	7,124	61	4,426	550	14	345
Paradise Valley	269	0	83	186	0	116	17	0	11
Peoria	2,620	16	752	1,852	19	1,157	122	10	66
Phoenix	43,932	206	14,744	28,982	224	23,096	2,388	81	1,754
Scottsdale	5,330	20	1,697	3,613	23	2,433	391	7	238
Surprise	927	6	279	642	8	450	48	1	41
Tempe	8,788	22	2,569	6,197	22	3,696	467	7	270
Tolleson	547	4	154	389	7	226	21	4	12
Wickenburg	90	0	24	66	0	32	1	0	0
Youngtown	12	0	4	8	0	4	0	0	0
Guadalupe	301	0	74	227	0	105	11	0	13
Litchfield Park	74	1	25	48	1	40	5	0	3
Queen Creek	103	1	33	69	1	50	7	0	3
Fountain Hills	196	2	37	157	2	52	10	2	4
Carefree	34	0	11	23	0	12	2	0	2
<b>TOTAL</b>	<b>94,159</b>	<b>506</b>	<b>29,622</b>	<b>64,031</b>	<b>567</b>	<b>45,386</b>	<b>5,078</b>	<b>175</b>	<b>3,474</b>

Mohave County	490	8	180	302	10	258	47	2	41
Mohave County State Rural Roads	749	30	286	433	33	499	62	4	72
Kingman	699	5	227	467	9	320	32	1	17
Lake Havasu City	740	3	278	459	4	390	88	3	65
Bullhead City	966	4	299	663	4	440	63	1	32
Colorado City	12	0	3	9	0	4	0	0	0
<b>TOTAL</b>	<b>3,656</b>	<b>50</b>	<b>1,273</b>	<b>2,333</b>	<b>60</b>	<b>1,911</b>	<b>292</b>	<b>11</b>	<b>227</b>

## Section 2: – Geographic Location

Table 2 - 5

### Analysis by Jurisdiction

COUNTIES Cities	Number of Crashes				No. of Persons		Alcohol Related		
	Total	Fatal	Injury	PDO	Killed	Injured	Crashes	Killed	Injured
Navajo County	201	17	75	109	17	121	26	3	38
Navajo County State Rural Roads	495	14	172	309	15	327	31	1	37
Holbrook	101	2	25	74	2	36	5	0	0
Show Low	303	3	74	226	3	108	16	1	9
Snowflake	72	0	18	54	0	26	7	0	7
Taylor	30	1	12	17	1	18	2	1	1
Winslow	167	2	44	121	2	71	13	0	7
Pinetop-Lakeside	103	2	22	79	2	32	8	1	5
<b>TOTAL</b>	<b>1,472</b>	<b>41</b>	<b>442</b>	<b>989</b>	<b>42</b>	<b>739</b>	<b>108</b>	<b>7</b>	<b>104</b>

Pima County	3,954	43	1,315	2,596	50	2,113	259	17	212
Pima County State Rural Roads	838	23	288	527	25	484	41	3	37
South Tucson	165	1	44	120	1	64	11	0	3
Tucson	13,708	56	4,861	8,791	61	7,352	593	10	428
Sahuarita	181	1	40	140	1	57	6	0	3
Oro Valley	480	3	147	330	3	225	7	1	1
Marana	1,027	9	249	769	10	370	40	1	21
<b>TOTAL</b>	<b>20,353</b>	<b>136</b>	<b>6,944</b>	<b>13,273</b>	<b>151</b>	<b>10,665</b>	<b>957</b>	<b>32</b>	<b>705</b>

Pinal County	742	32	237	473	42	400	55	20	54
Pinal County State Rural Roads	1,176	56	403	717	71	746	63	9	61
Casa Grande	1,001	5	296	700	5	482	54	1	33
Coolidge	171	1	37	133	1	54	9	0	9
Eloy	209	4	62	143	7	116	17	0	20
Florence	96	0	23	73	0	43	4	0	7
Kearny	6	2	0	4	3	4	2	2	4
Mammoth	6	0	3	3	0	9	0	0	0
Superior	19	1	2	16	2	3	1	0	0
Apache Junction	522	3	163	356	3	233	27	1	15
<b>TOTAL</b>	<b>3,948</b>	<b>104</b>	<b>1,226</b>	<b>2,618</b>	<b>134</b>	<b>2,090</b>	<b>232</b>	<b>33</b>	<b>203</b>

Santa Cruz County	45	2	10	33	6	39	4	0	6
Santa Cruz Co. State Rural Roads	188	7	63	118	9	103	11	1	19
Nogales	450	1	105	344	1	149	15	0	14
<b>TOTAL</b>	<b>683</b>	<b>10</b>	<b>178</b>	<b>495</b>	<b>16</b>	<b>291</b>	<b>30</b>	<b>1</b>	<b>39</b>

Yavapai County	441	13	146	282	17	218	60	3	48
Yavapai County State Rural Roads	1,243	38	416	789	44	627	76	3	62
Clarkdale	16	0	5	11	0	7	1	0	1
Cottonwood	344	1	124	219	1	185	18	1	19
Jerome	7	0	5	2	0	6	0	0	0
Prescott	1,110	2	281	827	2	401	65	1	39
Prescott Valley	665	0	179	486	0	271	39	0	28
Chino Valley	132	3	36	93	3	61	2	0	0
Camp Verde	124	2	46	76	2	71	8	0	9
<b>TOTAL</b>	<b>4,082</b>	<b>59</b>	<b>1,238</b>	<b>2,785</b>	<b>69</b>	<b>1,847</b>	<b>269</b>	<b>8</b>	<b>206</b>

Table 2 - 5

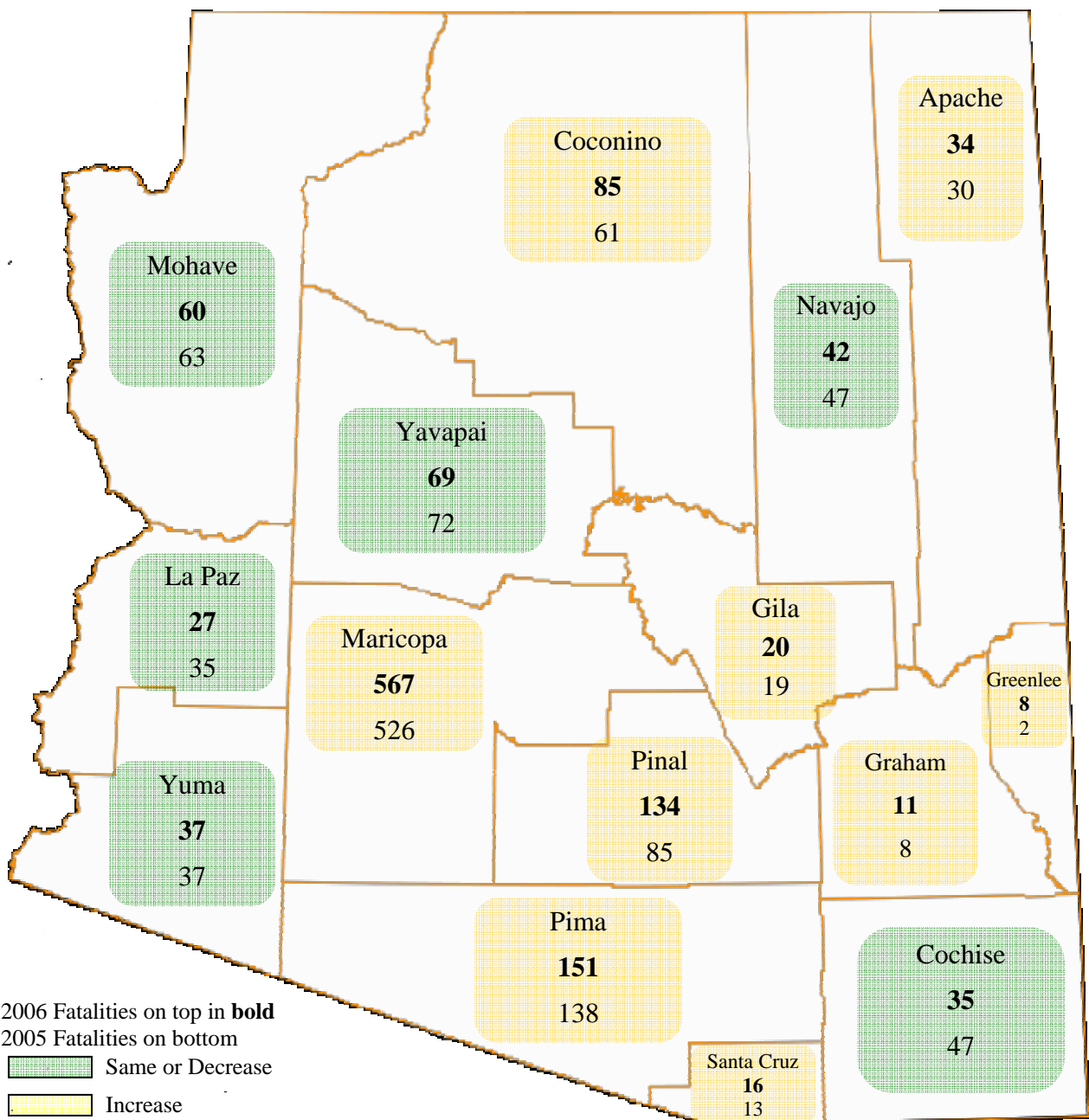
## Analysis by Jurisdiction

COUNTIES Cities	Number of Crashes				No. of Persons		Alcohol Related		
	Total	Fatal	Injury	PDO	Killed	Injured	Crashes	Killed	Injured
Yuma County	595	11	167	417	21	307	42	2	26
Yuma County State Rural Roads	349	11	126	212	12	215	17	1	18
Somerton	21	0	10	11	0	13	3	0	3
Yuma	2,067	4	723	1,340	4	1,092	112	0	73
Wellton	5	0	3	2	0	6	1	0	2
San Luis	93	0	21	72	0	26	1	0	0
<b>TOTAL</b>	<b>3,130</b>	<b>26</b>	<b>1,050</b>	<b>2,054</b>	<b>37</b>	<b>1,659</b>	<b>176</b>	<b>3</b>	<b>122</b>

Some individual city data may be incomplete due to lack of timely reporting.

Totals within city and town jurisdictions include all state highways.

## Total Fatalities by County for 2005 and 2006



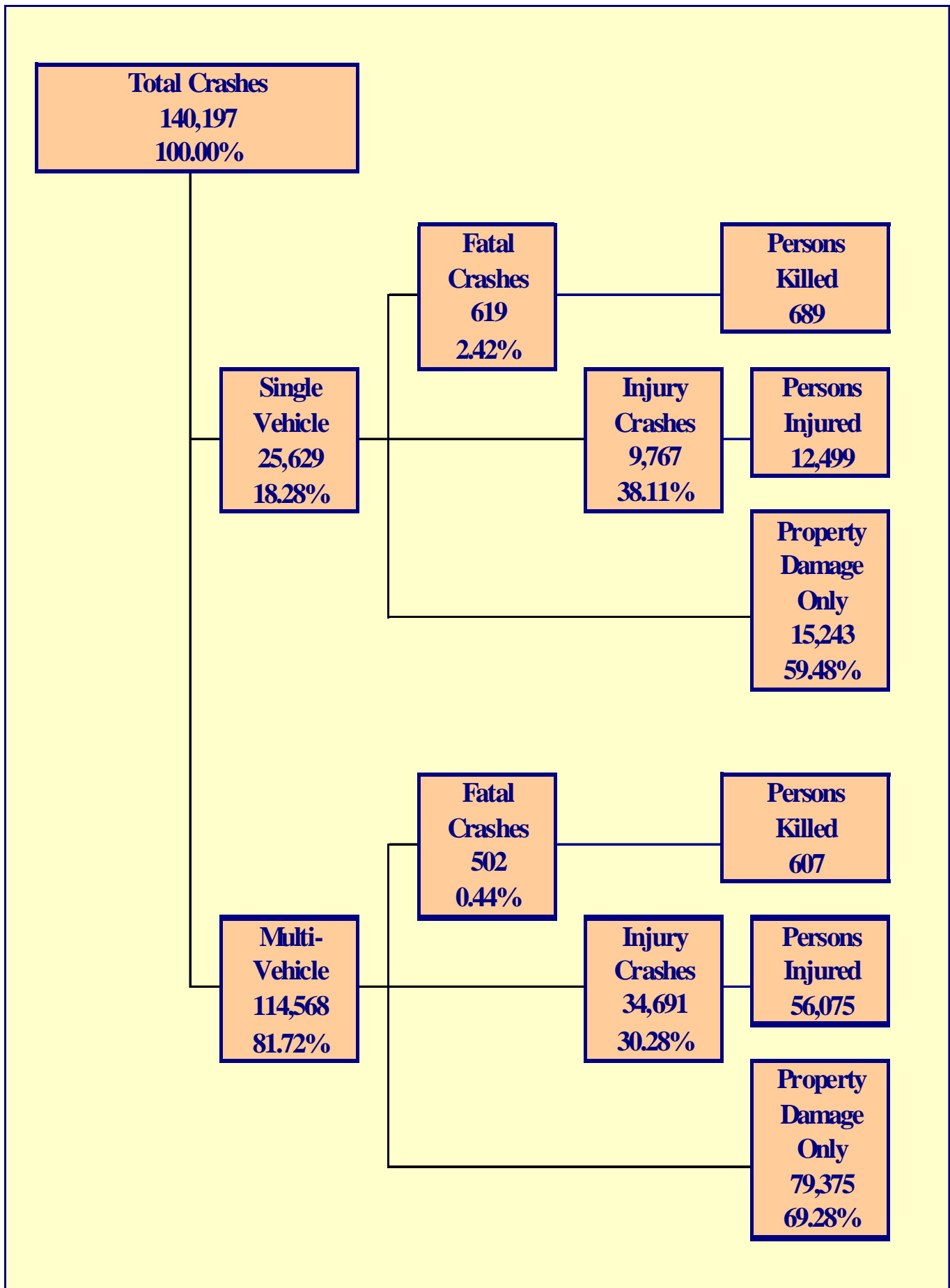


Table 3 - 1

**Manner of Collision in Multi-Vehicle Crashes**

Manner of Collision Type	Number of Crashes					
	Total	Percent of All Crashes	Fatal	Percent of Fatal Crashes	Injury	Percent of Injury Crashes
Sideswipe Same Direction	16,595	14.48%	28	5.58%	2,322	6.69%
Sideswipe Opposite Direction	1,362	1.19%	18	3.59%	365	1.05%
Angle	23,448	20.47%	160	31.87%	8,455	24.37%
Left Turn	13,354	11.66%	73	14.54%	5,952	17.16%
Rear-End	50,392	43.98%	70	13.94%	15,710	45.29%
Head-On	1,207	1.05%	98	19.52%	553	1.59%
Backing	3,275	2.86%	0	0.00%	155	0.45%
Other	2,882	2.52%	41	8.17%	635	1.83%
Non-Contact (motorcycle)	29	0.03%	4	0.80%	21	0.06%
Non-Contact (not motorcycle)	258	0.23%	6	1.20%	65	0.19%
U-Turn	1,766	1.54%	4	0.80%	458	1.32%
<b>TOTAL</b>	<b>114,568</b>	<b>100%</b>	<b>502</b>	<b>100%</b>	<b>34,691</b>	<b>100%</b>

Table 3 - 2

**Unusual Road Conditions**

Type of Unusual Road Condition	Incident Counts				Person Counts	
	Total	Fatal	Injury	PDO	Killed	Injured
No Unusual Conditions	134,224	1,063	42,701	90,460	1,235	65,801
Under Construction, Traffic Allowed	3,983	22	1,149	2,812	23	1,801
Under Construction, Traffic Detoured	104	1	27	76	1	37
Under Repairs	98	0	26	72	0	45
Holes, Ruts, Bumps	280	13	114	153	13	193
Obstruction (protected)	28	0	7	21	0	11
Obstruction (unprotected)	130	0	35	95	0	52
Obstruction (unlighted at night)	137	6	40	91	7	73
Defective Shoulders	90	2	35	53	2	65
Changing Roadwidth	302	4	96	202	5	142
Flooded	420	3	120	297	3	170
Temporary Lane Closure	401	7	108	286	7	184
<b>TOTAL</b>	<b>140,197</b>	<b>1,121</b>	<b>44,458</b>	<b>94,618</b>	<b>1,296</b>	<b>68,574</b>

Table 3 - 3

**Lighting Conditions**

Type of Lighting Conditions	Incident Counts				Person Counts	
	Total	Fatal	Injury	PDO	Killed	Injured
Daylight	99,134	521	31,012	67,601	607	47,151
Dawn or Dusk	8,185	80	2,638	5,467	94	4,102
Darkness	32,526	509	10,728	21,289	584	17,203
Not Reported	352	11	80	261	11	118
<b>TOTAL</b>	<b>140,197</b>	<b>1,121</b>	<b>44,458</b>	<b>94,618</b>	<b>1,296</b>	<b>68,574</b>

Table 3 - 4

### Weather Conditions

Type of Conditions	Incident Counts				Person Counts	
	Total	Fatal	Injury	PDO	Killed	Injured
Clear	122,951	882	39,138	82,931	1,026	60,274
Cloudy	11,864	112	3,871	7,881	129	5,976
Sleet/Hail	161	1	47	113	1	82
Rain	3,569	32	993	2,544	33	1,547
Snow	677	8	132	537	10	203
Severe Crosswinds	122	2	41	79	2	59
Blowing Sand, Soil, Dirt, Snow	182	7	58	117	9	134
Fog, Smog, Smoke	44	0	13	31	0	17
Not Reported	627	77	165	385	86	282
<b>TOTAL</b>	<b>140,197</b>	<b>1,121</b>	<b>44,458</b>	<b>94,618</b>	<b>1,296</b>	<b>68,574</b>

Table 3 - 5

### Road Surface Type

Type of Surface	Incident Counts				Person Counts	
	Total	Fatal	Injury	PDO	Killed	Injured
Asphalt	133,492	1,000	42,331	90,161	1,156	65,368
Concrete	4,547	21	1,435	3,091	30	2,086
Gravel	280	6	83	191	7	118
Dirt	1,193	26	423	744	27	692
Other	94	2	23	69	2	30
Not Reported	591	66	163	362	74	280
<b>TOTAL</b>	<b>140,197</b>	<b>1,121</b>	<b>44,458</b>	<b>94,618</b>	<b>1,296</b>	<b>68,574</b>

Table 3 - 6

### Road Surface Conditions

Type of Road Surface Condition	Incident Counts				Person Counts	
	Total	Fatal	Injury	PDO	Killed	Injured
Dry	130,878	957	41,857	88,064	1,122	64,505
Wet	4,899	41	1,367	3,491	42	2,121
Not Reported, No Unusual Condition	2,552	86	771	1,695	92	1,217
Sand, Mud, Dirt, Oil or Gravel	630	10	211	409	10	307
Snow	413	4	81	328	6	124
Slush	88	1	32	55	1	52
Ice	426	6	80	340	6	148
Other	71	2	24	45	2	39
Unknown	240	14	35	191	15	61
<b>TOTAL</b>	<b>140,197</b>	<b>1,121</b>	<b>44,458</b>	<b>94,618</b>	<b>1,296</b>	<b>68,574</b>

Table 3 - 7

### Road Grade

Type of Grade	Incident Counts				Person Counts	
	Total	Fatal	Injury	PDO	Killed	Injured
Level	126,908	839	40,188	85,881	966	61,964
Downgrade	6,827	113	2,297	4,417	141	3,550
Upgrade	4,750	68	1,438	3,244	77	2,187
Hillcrest	393	8	153	232	8	258
Dip	194	5	80	109	9	134
Not Reported	1,125	88	302	735	95	481
<b>TOTAL</b>	<b>140,197</b>	<b>1,121</b>	<b>44,458</b>	<b>94,618</b>	<b>1,296</b>	<b>68,574</b>

Chart 3 - 1

All Crashes vs. Fatal Crashes by Time of Day - Weekdays

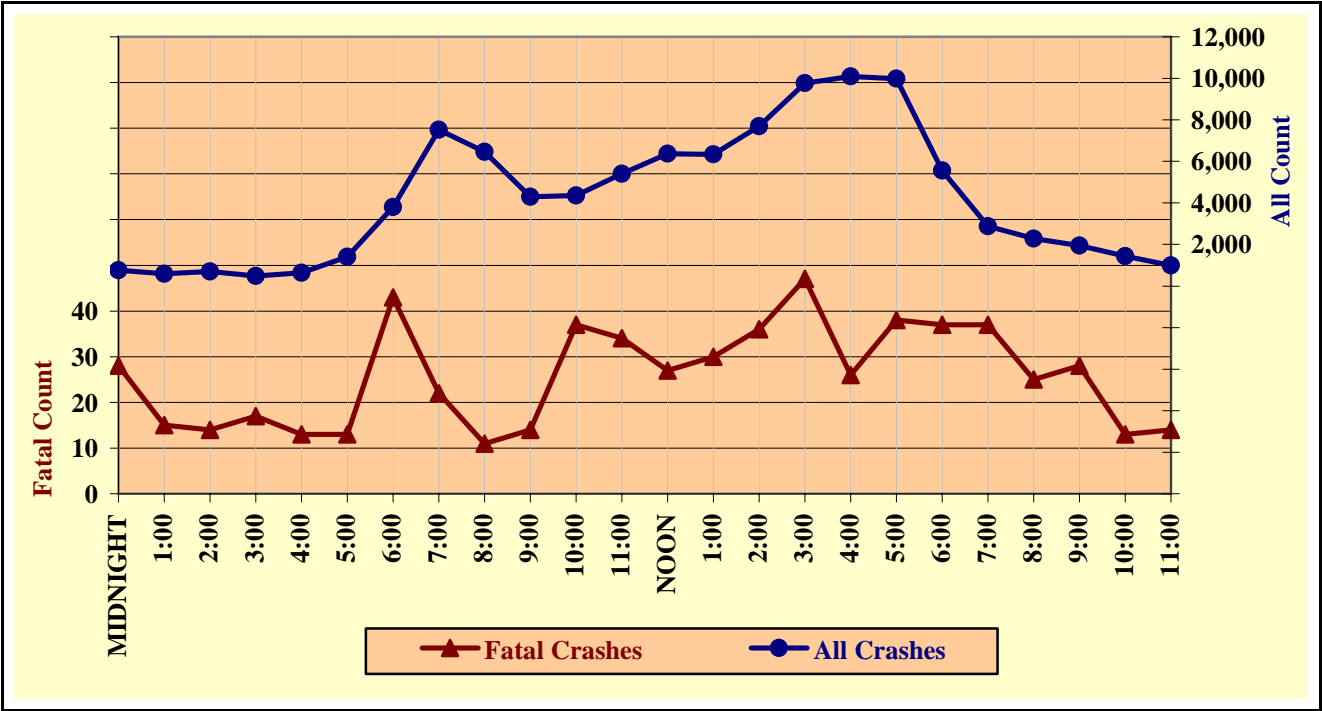


Chart 3 - 2

All Crashes vs. Fatal Crashes by Time of Day - Weekends

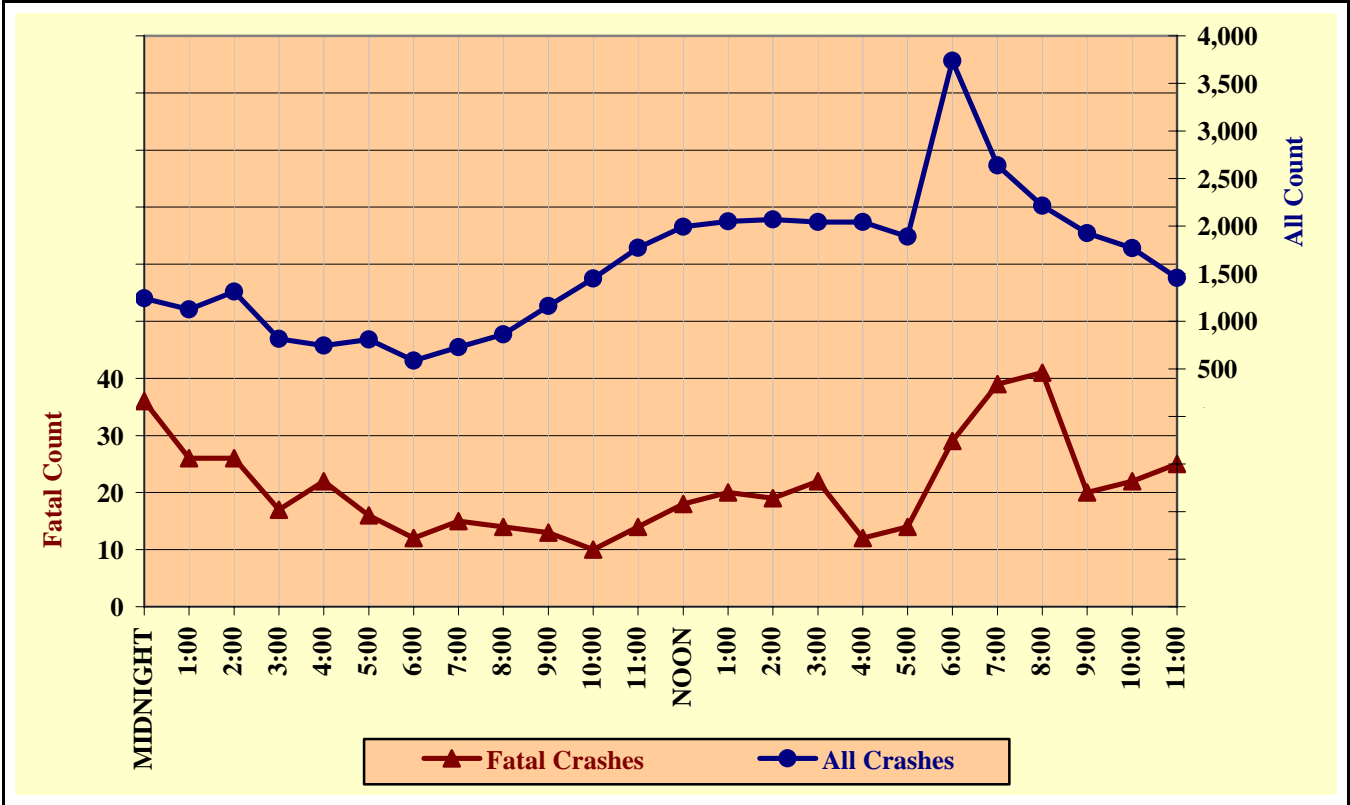


Chart 3 - 3

Crashes by Day of Week

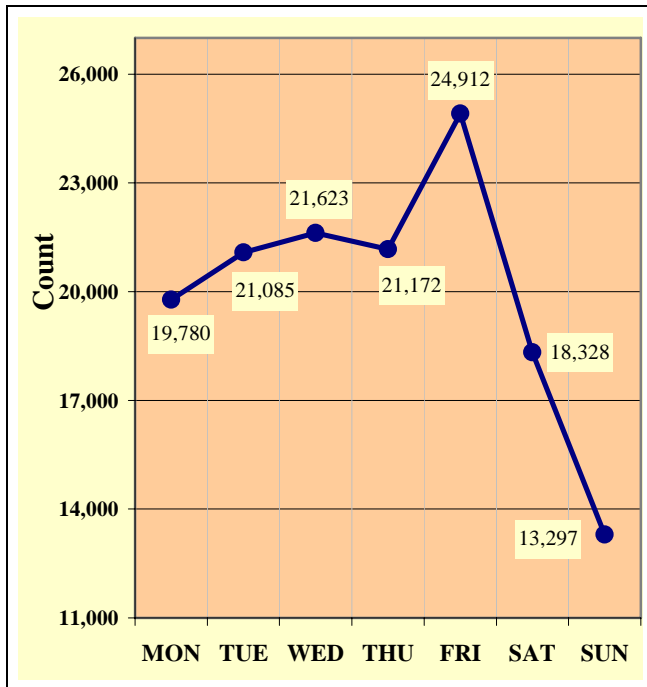


Chart 3 - 4

Fatal Crashes by Day of Week

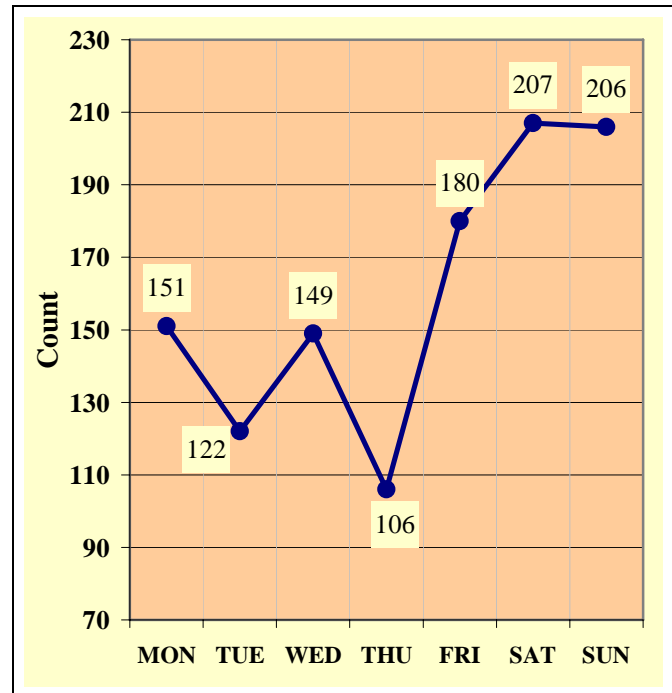
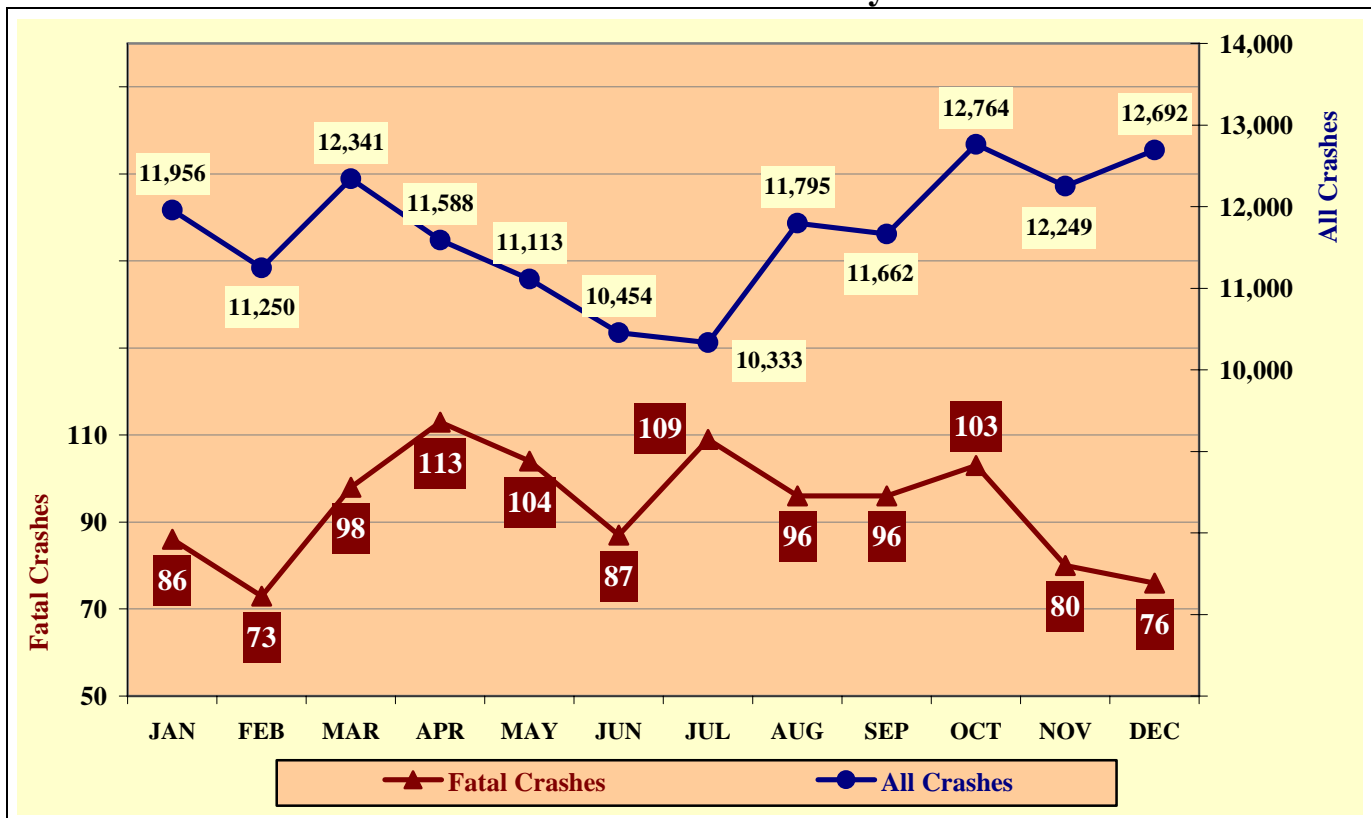


Chart 3 - 5

All Crashes vs. Fatal Crashes by Month

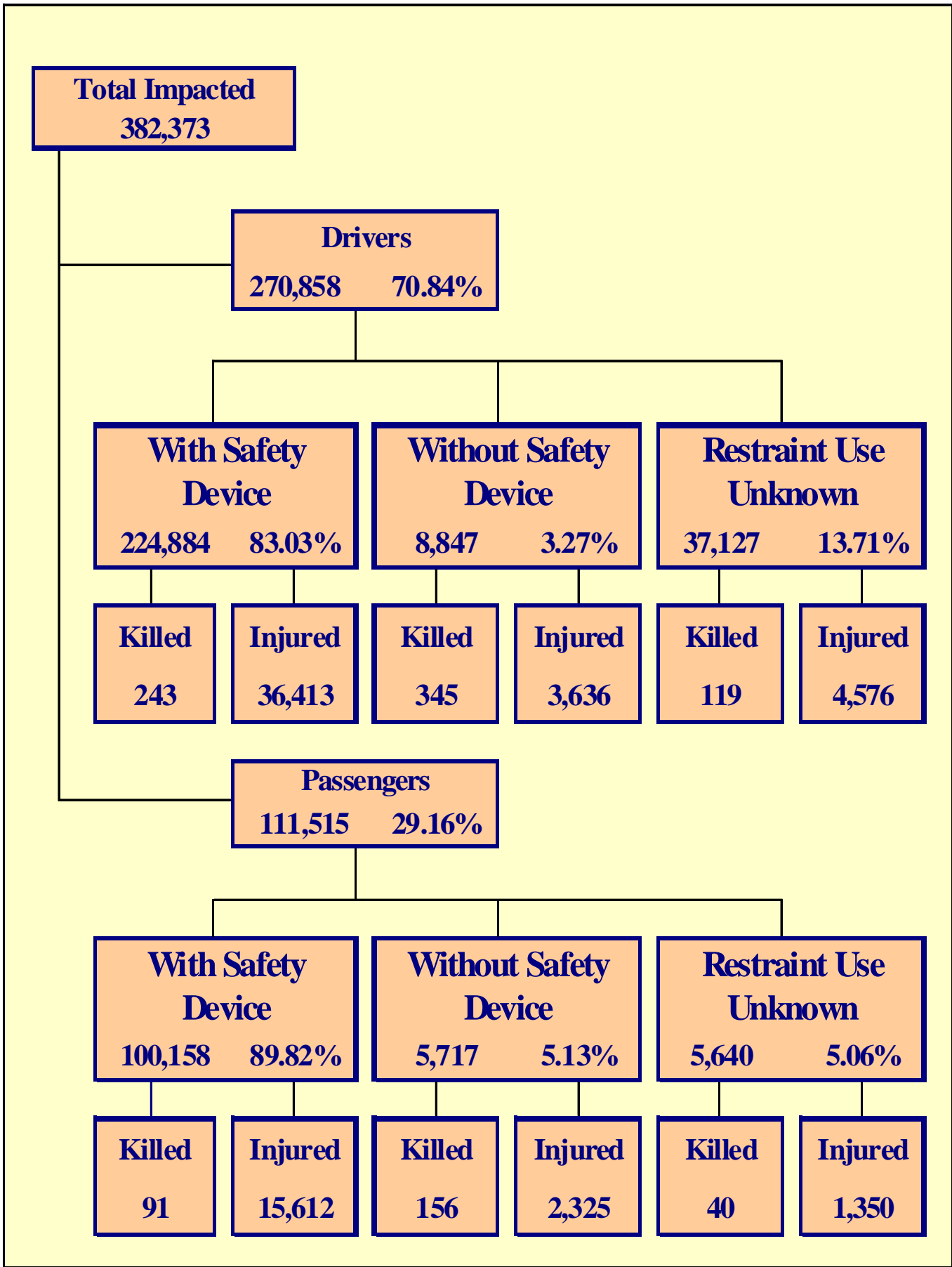


### Section 3:- Crash Descriptions

Table 3 - 8

#### Crashes by Hour and Day of Week

Hour Beginning	Total Crashes		Monday		Tuesday		Wednesday		Thursday		Friday		Saturday		Sunday	
	All	Fatal	All	Fatal	All	Fatal	All	Fatal	All	Fatal	All	Fatal	All	Fatal	All	Fatal
<b>MIDNIGHT</b>	2,002	64	214	11	160	4	174	5	193	7	232	12	538	15	491	10
<b>1:00</b>	1,710	41	181	2	117	5	127	6	156	3	186	1	465	13	478	11
<b>2:00</b>	2,005	40	177	5	148	2	161	4	182	1	202	7	561	10	574	11
<b>3:00</b>	1,297	34	113	1	108	3	113	3	120	4	139	7	348	6	356	10
<b>4:00</b>	1,380	35	171	7	122	0	166	4	156	2	191	7	288	9	286	6
<b>5:00</b>	2,209	29	305	2	368	2	321	2	353	3	358	6	261	4	243	10
<b>6:00</b>	4,388	55	725	9	810	3	791	12	760	7	714	12	329	6	259	6
<b>7:00</b>	8,254	37	1,426	3	1,606	3	1,635	8	1,513	2	1,345	6	430	5	299	10
<b>8:00</b>	7,325	25	1,206	2	1,359	3	1,428	4	1,309	1	1,162	1	555	6	306	8
<b>9:00</b>	5,463	27	783	3	894	3	931	4	827	1	866	3	720	9	442	4
<b>10:00</b>	5,814	47	849	7	892	10	858	11	864	5	901	4	875	6	575	4
<b>11:00</b>	7,182	48	1,067	7	1,078	6	1,034	4	1,077	8	1,154	9	1,126	7	646	7
<b>NOON</b>	8,360	45	1,167	5	1,151	6	1,311	6	1,209	5	1,529	5	1,178	9	815	9
<b>1:00</b>	8,390	50	1,175	9	1,134	7	1,234	8	1,232	1	1,566	5	1,229	12	820	8
<b>2:00</b>	9,760	55	1,333	7	1,431	4	1,578	11	1,495	9	1,852	5	1,173	6	898	13
<b>3:00</b>	11,806	69	1,799	12	1,918	10	1,864	10	1,847	6	2,336	9	1,168	13	874	9
<b>4:00</b>	12,132	38	1,867	5	1,984	5	2,016	5	1,891	3	2,331	8	1,199	7	844	5
<b>5:00</b>	11,881	52	1,813	12	1,987	5	2,054	4	1,942	5	2,197	12	1,075	9	813	5
<b>6:00</b>	9,290	66	1,190	10	1,431	14	1,482	8	1,450	5	1,690	9	1,186	13	861	7
<b>7:00</b>	5,528	76	691	9	685	8	739	14	775	6	1,061	8	853	8	724	23
<b>8:00</b>	4,502	66	569	6	568	7	548	7	603	5	827	19	797	8	590	14
<b>9:00</b>	3,864	48	466	8	495	4	466	4	512	12	797	5	678	8	450	7
<b>10:00</b>	3,204	35	306	4	376	5	342	1	410	3	722	10	658	8	390	4
<b>11:00</b>	2,451	39	187	5	263	3	250	4	296	2	554	10	638	10	263	5
<b>TOTAL</b>	<b>140,197</b>	<b>1,121</b>	<b>19,780</b>	<b>151</b>	<b>21,085</b>	<b>122</b>	<b>21,623</b>	<b>149</b>	<b>21,172</b>	<b>106</b>	<b>24,912</b>	<b>180</b>	<b>18,328</b>	<b>207</b>	<b>13,297</b>	<b>206</b>



### Arizona law requires young children to be restrained when riding in a motor vehicle.

A.R.S. Title 28-907 states "...a person shall not operate a motor vehicle on the highways in this state when transporting a child who is under five years of age unless that child is properly secured in a child passenger restraint system."

Table 4 - 1

### Child Restraint Usage (less than five years old)

Severity of Injury	Restraint Used	Percent of Restraint Used	No Restraint Used	Percent of No Restraint	Not Reported	Percent of Unknown
No Injury	12,016	89.82%	282	66.98%	395	76.40%
Possible Injury	838	6.26%	61	14.49%	25	4.84%
Injury*	361	2.70%	66	15.68%	35	6.77%
Fatality	7	0.05%	7	1.66%	4	0.77%
Unknown	156	1.17%	5	1.19%	58	11.22%
<b>TOTALS</b>	<b>13,378</b>	<b>100.00%</b>	<b>421</b>	<b>100.00%</b>	<b>517</b>	<b>100.00%</b>
*Includes non-incapacitating and incapacitating injuries						

*The most dangerous place for a child to travel in a car is in your lap.*

This is often called the "child crusher position." In a crash of approximately 30 mph, a 10 pound infant will be ripped from a belted adult's arms with a force of almost 200 pounds. If the adult is unbelted, the child is likely to be crushed between the adult's body and the dashboard.

**Wearing a seat belt isn't just a good idea; in Arizona, it's the law.**

Table 4 - 2

### Driver Restraint Usage

Severity of Injury	Restraint Used	Percent of Restraint Used	No Restraint Used	Percent of No Restraint	Not Reported	Percent of Unknown
No Injury	185,781	82.61%	4,186	47.32%	12,930	34.83%
Possible Injury	22,482	10.00%	1,071	12.11%	1,978	5.33%
Injury*	13,931	6.19%	2,565	28.99%	2,598	7.00%
Fatality	243	0.11%	345	3.90%	119	0.32%
Unknown	2,447	1.09%	680	7.69%	19,502	52.53%
<b>TOTALS</b>	<b>224,884</b>	<b>100.00%</b>	<b>8,847</b>	<b>100.00%</b>	<b>37,127</b>	<b>100.00%</b>
*Includes non-incapacitating and incapacitating injuries						

## Section 4: - Safety Devices

Table 4 - 3

### Front-Seat Passenger Restraint Usage

Severity of Injury	Restraint Used	Percent of Restraint Used	No Restraint Used	Percent of No Restraint	Not Reported	Percent of Unknown
No Injury	46,245	81.04%	1,338	49.16%	2,111	65.11%
Possible Injury	6,479	11.35%	422	15.50%	399	12.31%
Injury*	3,859	6.76%	834	30.64%	499	15.39%
Fatality	67	0.12%	94	3.45%	22	0.68%
Unknown	416	0.73%	34	1.25%	211	6.51%
<b>TOTALS</b>	<b>57,066</b>	<b>100.00%</b>	<b>2,722</b>	<b>100.00%</b>	<b>3,242</b>	<b>100.00%</b>

\*Includes non-incapacitating and incapacitating injuries

**Safety belts used in conjunction with airbags are the most effective protection in vehicle crashes.**

Source: <http://www.nsc.org/nsm/safetybeltrisktip.htm>

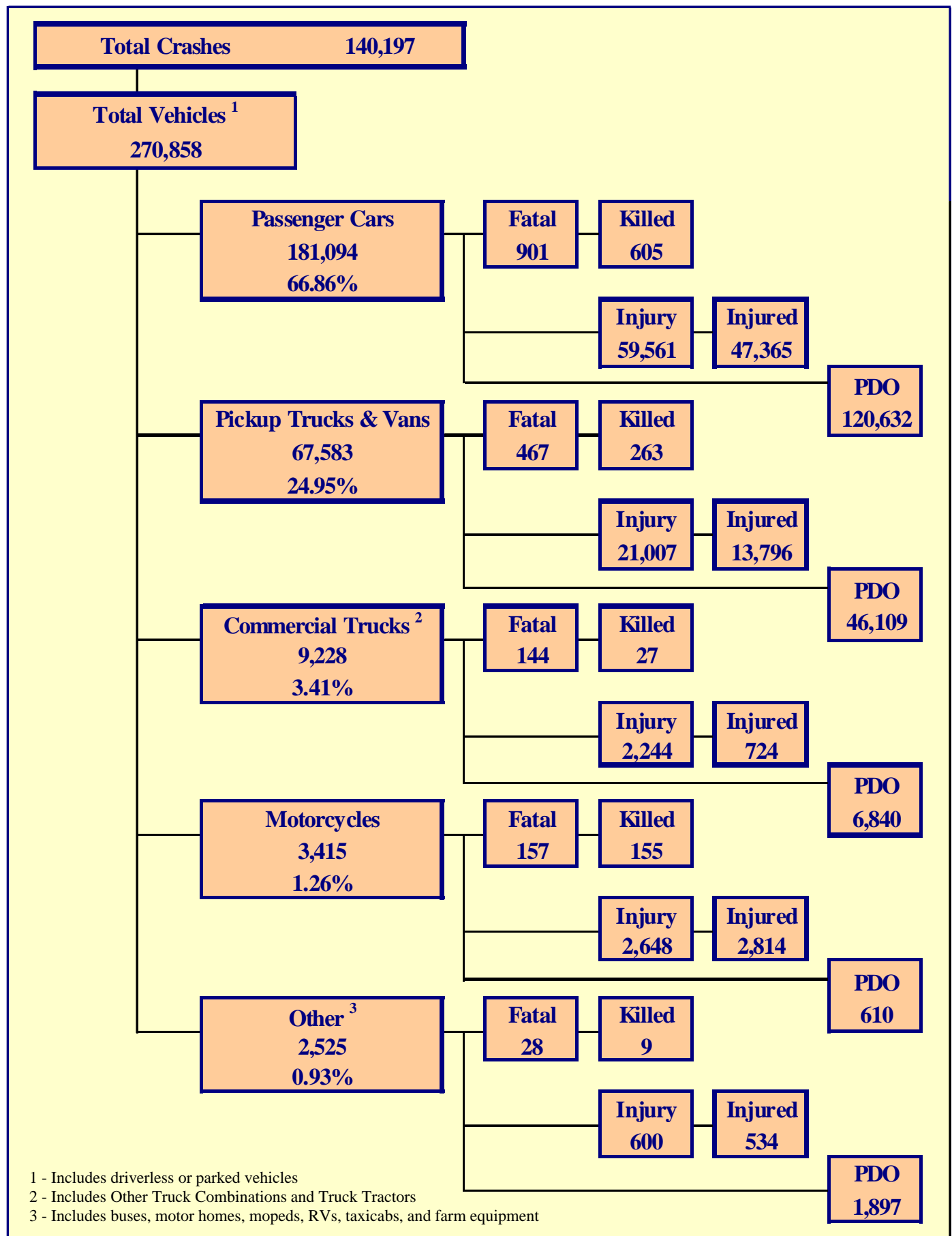
Table 4 - 4

### Rear-Seat Passenger Restraint Usage

Severity of Injury	Restraint Used	Percent of Restraint Used	No Restraint Used	Percent of No Restraint	Not Reported	Percent of Unknown
No Injury	25,403	85.49%	1,553	60.33%	1,374	73.05%
Possible Injury	2,639	8.88%	377	14.65%	191	10.15%
Injury*	1,436	4.83%	565	21.95%	201	10.69%
Fatality	17	0.06%	55	2.14%	14	0.74%
Unknown	219	0.74%	24	0.93%	101	5.37%
<b>TOTALS</b>	<b>29,714</b>	<b>100.00%</b>	<b>2,574</b>	<b>100.00%</b>	<b>1,881</b>	<b>100.00%</b>

\*Includes non-incapacitating and incapacitating injuries

## Section 5 ♦ Motor Vehicle and Driver Descriptions



## Section 5: – Motor Vehicle and Driver Descriptions

Table 5 - 1

### Arizona Motor Vehicle Registrations

Privately Owned Vehicles	4,145,711
Commercial Vehicles	468,707
Buses and Taxis	4,007
Motorcycles	130,109
Mopeds	423
<b>TOTAL</b>	<b>4,748,957</b>
Source: MVD - MV988 MV630419, Currently Registered Vehicles by County Listing, dated 12/31/2006.	

Table 5 - 2

### Motor Vehicle Crash Involvement by Vehicle Type

Motor Vehicle Type	Vehicle Counts				
	Total	Percent	Fatal	Injury	PDO
Passenger Car (Includes cars with trailer)	181,094	66.86%	901	59,561	120,632
Pickup Truck and Vans	67,409	24.89%	461	20,949	45,999
Pickup Truck With Camper	174	0.06%	6	58	110
Other Vehicle With Camper	15	0.01%	0	0	15
Truck Tractor Only	226	0.08%	2	55	169
Truck Tractor and Semi-Trailer	4,445	1.64%	94	1,009	3,342
Other Truck Combination	4,557	1.68%	48	1,180	3,329
Farm Tractor and/or Farm Equipment	51	0.02%	2	7	42
Taxicab	27	0.01%	1	5	21
Commercial Bus	200	0.07%	1	42	157
Non-Commercial Bus	833	0.31%	3	166	664
School Bus	557	0.21%	3	108	446
Motorcycle (two or three wheel)	3,415	1.26%	157	2,648	610
Motorscooter or Motor Bicycle	26	0.01%	1	22	3
Moped	7	0.00%	0	5	2
Recreational Vehicle	39	0.01%	0	19	20
Motor Home or House Car	245	0.09%	6	52	187
Vehicle With Special Controls (Dual, Etc.)	2	0.00%	0	0	2
Emergency Vehicle (Inc. Privately Owned)	196	0.07%	2	62	132
Military	4	0.00%	0	1	3
Other Types Of Vehicles	323	0.12%	9	111	203
Vehicle Type Not Reported	7,013	2.59%	70	1,351	5,592
<b>TOTAL</b>	<b>270,858</b>	<b>100.00%</b>	<b>1,767</b>	<b>87,411</b>	<b>181,680</b>

## Section 5: – Motor Vehicle and Driver Descriptions

Table 5 - 3

### Hit and Run Drivers Involved in Crashes

Hit and Run	Incident Counts				Person Counts	
	Total	Fatal	Injury	PDO	Killed	Injured
Yes	17,539	78	3,592	13,869	84	4,954
No	122,658	1,043	40,866	80,749	1,212	63,620
<b>TOTAL</b>	<b>140,197</b>	<b>1,121</b>	<b>44,458</b>	<b>94,618</b>	<b>1,296</b>	<b>68,574</b>

Table 5 - 4

### Gender of Drivers Involved in Crashes

Gender of Driver	Driver Counts					
	Total	Percent	Fatal	Percent	Injury	Percent
Male	151,527	55.94%	1,230	69.61%	48,681	55.69%
Female	102,852	37.97%	428	24.22%	35,990	41.17%
Not Reported	16,479	6.08%	109	6.17%	2,740	3.13%
<b>TOTAL</b>	<b>270,858</b>	<b>100.00%</b>	<b>1,767</b>	<b>100.00%</b>	<b>87,411</b>	<b>100.00%</b>

Table 5 - 5

### License Status of Drivers Involved in Crashes

License Status of Driver	Driver Counts							
	Total	Percent of Total	Fatal	Percent of Fatal	Injury	Percent of Injury	PDO	Percent of PDO
Arizona License	208,289	76.90%	1,183	66.95%	69,327	79.31%	137,779	75.84%
All Others*	62,569	23.10%	584	33.05%	18,084	20.69%	43,901	24.16%
<b>TOTAL</b>	<b>270,858</b>	<b>100.00%</b>	<b>1,767</b>	<b>100.00%</b>	<b>87,411</b>	<b>100.00%</b>	<b>181,680</b>	<b>100.00%</b>

\*Includes drivers that have a suspended, revoked, out-of-state or country license, as well as drivers with no license or unknown license type

Table 5 - 6

### Passengers Killed and Injured by Age and Gender\*

Age Of Passenger	Passengers Killed			Passengers Injured			
	Total	Male	Female	Total	Male	Female	Gender Unknown
0-4	18	9	9	1,377	711	664	2
5-9	19	9	10	1,681	795	884	2
10-14	10	4	6	1,892	806	1,082	4
15-19	81	45	36	3,748	1,575	2,172	1
20-24	44	30	14	2,362	1,072	1,290	0
25-34	51	33	18	2,804	1,189	1,613	2
35-44	38	19	19	1,886	706	1,178	2
45-54	35	16	19	1,668	496	1,171	1
55-64	29	13	16	1,145	271	874	0
65-74	15	6	9	761	181	579	1
75 & Older	33	8	25	681	168	512	1
Not Stated	1	1	0	712	308	361	43
<b>TOTAL</b>	<b>374</b>	<b>193</b>	<b>181</b>	<b>20,717</b>	<b>8,278</b>	<b>12,380</b>	<b>59</b>

\*Does not include passengers of Motorcycles, Mopeds, or Motorscooters

## Section 5: – Motor Vehicle and Driver Descriptions

Table 5 - 7

### Drivers and Occupants Killed and Injured by Vehicle Type

Motor Vehicle Type	Drivers		Occupants	
	Killed	Injured	Killed	Injured
Passenger Car (Includes cars with trailer)	377	32,184	228	15,181
Pickup Truck and Vans	143	8,850	116	4,893
Pickup Truck With Camper	2	30	2	23
Other Vehicle With Camper	0	0	0	0
Truck Tractor Only	1	11	0	0
Truck Tractor and Semi-Trailer	8	244	3	52
Other Truck Combination	10	304	5	113
Farm Tractor and/or Farm Equipment	0	2	0	1
Taxicab	0	2	0	0
Commercial Bus	0	11	1	42
Non-Commercial Bus	0	32	0	133
School Bus	0	25	0	82
Motorcycle (two or three wheel)	139	2,558	16	256
Motorscooter or Motor Bicycle	1	22	0	4
Moped	0	5	0	0
Recreational Vehicle	0	12	0	8
Motor Home or House Car	0	12	0	4
Vehicle With Special Controls (Dual, Etc.)	0	0	0	0
Emergency Vehicle (Inc. Privately Owned)	0	39	0	11
Military	0	1	0	0
Other Types Of Vehicles	6	63	1	23
Vehicle Type Not Reported	20	218	18	151
<b>TOTAL</b>	<b>707</b>	<b>44,625</b>	<b>390</b>	<b>20,977</b>

Table 5 - 8

### Drivers Killed and Injured by Age and Gender\*

Age Of Driver	Drivers Killed			Drivers Injured			
	Total	Male	Female	Total	Male	Female	Gender Unknown
0-4	0	0	0	0	0	0	0
5-9	0	0	0	8	3	5	0
10-14	1	1	0	41	23	17	1
15-19	56	37	19	4,809	2,308	2,499	2
20-24	66	47	19	6,485	3,129	3,351	5
25-34	129	101	28	9,036	4,388	4,636	12
35-44	91	71	20	7,760	3,684	4,073	3
45-54	77	53	24	6,147	2,954	3,190	3
55-64	67	39	28	4,116	1,922	2,191	3
65-74	34	25	9	1,836	939	896	1
75 & Older	46	32	14	1,387	691	694	2
Not Stated	0	0	0	415	245	136	34
<b>TOTAL</b>	<b>567</b>	<b>406</b>	<b>161</b>	<b>42,040</b>	<b>20,286</b>	<b>21,688</b>	<b>66</b>
*Does not include drivers of Motorcycles, Mopeds, or Motorscooters							

## Section 5: – Motor Vehicle and Driver Descriptions

Table 5 - 9

### Licensed Drivers in Arizona by Age

Driver Age Group	Male Number	Percent	Female Number	Percent	Total Number	Percent	Cumulative Percent
16	11,014	0.54%	10,626	0.52%	21,640	0.53%	0.53 %
17	19,646	0.96%	17,983	0.88%	37,629	0.92%	1.45 %
18	26,341	1.29%	24,442	1.20%	50,783	1.24%	2.69 %
19	29,256	1.43%	27,406	1.34%	56,662	1.38%	4.07 %
20	30,813	1.50%	29,793	1.46%	60,606	1.48%	5.56 %
21	32,771	1.60%	32,417	1.59%	65,188	1.59%	7.15 %
22	32,918	1.61%	32,712	1.60%	65,630	1.60%	8.75 %
23	34,103	1.66%	33,947	1.66%	68,050	1.66%	10.42 %
24	36,441	1.78%	36,436	1.78%	72,877	1.78%	31.04 %
25-34	391,747	19.13 %	379,472	18.57%	771,219	18.85 %	31.04 %
35-44	419,445	20.48 %	398,031	19.48%	817,476	19.98 %	51.02 %
45-54	390,421	19.06 %	398,460	19.50%	788,881	19.28 %	70.30 %
55-64	305,702	14.92 %	319,850	15.65%	625,552	15.29 %	85.59 %
65-74	170,298	8.31 %	175,406	8.58%	345,704	8.45 %	94.04 %
75 & Older	117,380	5.73 %	126,512	6.19%	243,892	5.96 %	100.00 %
<b>TOTALS</b>	<b>2,048,296</b>	<b>100.00%</b>	<b>2,043,493</b>	<b>100.00%</b>	<b>4,091,789</b>	<b>100.00 %</b>	<b>100.00%</b>

Source: MVD - MV708 MV650653-1, Point-in-Time Driver Credential Report/All Driver Licenses by Age, Gender, & Class, dated 1/2/2007.

Table 5 - 10

### Driver Involvement by Age

Driver Age Group	Driver Counts							
	Total	Percent of Total	Fatal	Percent of Fatal	Injury	Percent of Injury	PDO	Percent of PDO
15 & Under	812	0.30%	5	0.28%	325	0.37%	482	0.27%
16	4,696	1.73%	23	1.30%	1,490	1.70%	3,183	1.75%
17	6,672	2.46%	31	1.75%	2,201	2.52%	4,440	2.44%
18	8,767	3.24%	47	2.66%	2,934	3.36%	5,786	3.18%
19	8,772	3.24%	71	4.02%	2,996	3.43%	5,705	3.14%
20	8,384	3.10%	47	2.66%	2,889	3.31%	5,448	3.00%
21	7,997	2.95%	39	2.21%	2,666	3.05%	5,292	2.91%
22	7,536	2.78%	52	2.94%	2,476	2.83%	5,008	2.76%
23	7,334	2.71%	36	2.04%	2,479	2.84%	4,819	2.65%
24	6,916	2.55%	35	1.98%	2,346	2.68%	4,535	2.50%
25-34	55,500	20.49%	371	21.00%	18,242	20.87%	36,887	20.30%
35-44	46,645	17.22%	286	16.19%	15,574	17.82%	30,785	16.94%
45-54	36,522	13.48%	264	14.94%	12,166	13.92%	24,092	13.26%
55-64	23,048	8.51%	179	10.13%	7,824	8.95%	15,045	8.28%
65-74	10,867	4.01%	79	4.47%	3,689	4.22%	7,099	3.91%
75 & Older	7,444	2.75%	76	4.30%	2,619	3.00%	4,749	2.61%
Not Stated	22,946	8.47%	126	7.13%	4,495	5.14%	18,325	10.09%
<b>TOTAL</b>	<b>270,858</b>	<b>100.00%</b>	<b>1,767</b>	<b>100.00%</b>	<b>87,411</b>	<b>100.00%</b>	<b>181,680</b>	<b>100.00%</b>

## Section 5: – Motor Vehicle and Driver Descriptions

Table 5 - 11

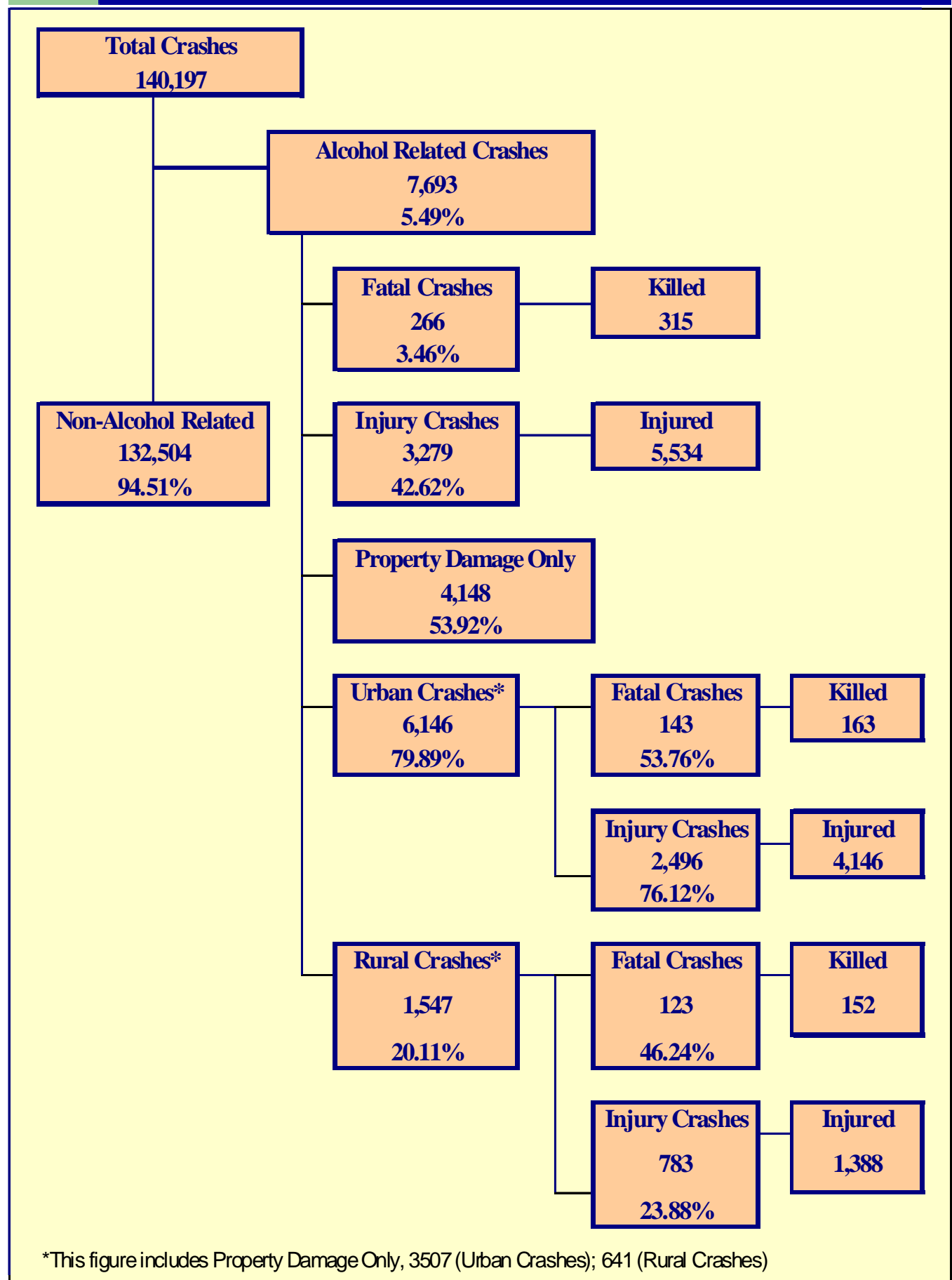
### Driver Errors

Driver Violation or Behavior	Driver Counts							
	Total	Percent of Total Drivers	Fatal	Percent of Fatal Drivers	Injury	Percent of Injury Drivers	PDO	Percent of PDO Drivers
No Improper Driving	127,779	47.18%	639	36.16%	42,474	48.59%	84,666	46.60%
Speeding*	47,803	17.65%	372	21.05%	16,178	18.51%	31,253	17.20%
Exceeded Lawful Speed	1,291	0.48%	58	3.28%	564	0.65%	669	0.37%
Failed to Yield Right-Of-Way	27,092	10.00%	132	7.47%	10,333	11.82%	16,627	9.15%
Followed Too Closely	4,903	1.81%	7	0.40%	1,293	1.48%	3,603	1.98%
Ran Stop Sign	1,357	0.50%	30	1.70%	618	0.71%	709	0.39%
Disregarded Traffic Signal	5,386	1.99%	46	2.60%	2,630	3.01%	2,710	1.49%
Made Improper Turn	4,477	1.65%	3	0.17%	1,034	1.18%	3,440	1.89%
Drove in Opposing Lane	1,531	0.57%	80	4.53%	610	0.70%	841	0.46%
Operated with Faulty Equipment	287	0.11%	3	0.17%	91	0.10%	193	0.11%
Required Motorcycle Safety Equipment Not Used	28	0.01%	2	0.11%	22	0.03%	4	0.00%
Passed in No-Passing Zone	143	0.05%	0	0.00%	26	0.03%	117	0.06%
Unsafe Lane Change	7,681	2.84%	10	0.57%	1,170	1.34%	6,501	3.58%
Other Unsafe Passing	1,072	0.40%	10	0.57%	168	0.19%	894	0.49%
Inattention	15,501	5.72%	54	3.06%	4,062	4.65%	11,385	6.27%
Other	8,970	3.31%	81	4.58%	2,320	2.65%	6,569	3.62%
Unknown	15,557	5.74%	240	13.58%	3,818	4.37%	11,499	6.33%
<b>TOTAL</b>	<b>270,858</b>	<b>100%</b>	<b>1,767</b>	<b>100%</b>	<b>87,411</b>	<b>100%</b>	<b>181,680</b>	<b>100%</b>
*Driving too fast for conditions.								

Table 5 - 12

### Driver Physical Condition

Type of Condition	Driver Counts							
	Total	Percent of Total Drivers	Fatal	Percent of Fatal Drivers	Injury	Percent of Injury Drivers	PDO	Percent of PDO Drivers
No Apparent Influence	230,147	84.97%	949	53.71%	75,177	86.00%	154,021	84.78%
Had Been Drinking	7,778	2.87%	286	16.19%	3,326	3.81%	4,166	2.29%
Appeared to be Under Influence of Drugs*	381	0.14%	27	1.53%	201	0.23%	153	0.08%
Ill-Ability Influenced	397	0.15%	1	0.06%	218	0.25%	178	0.10%
Sleepy-Fatigued	1,608	0.59%	30	1.70%	695	0.80%	883	0.49%
Physical Impairment	195	0.07%	4	0.23%	91	0.10%	100	0.06%
Prescription Drugs	362	0.13%	3	0.17%	145	0.17%	214	0.12%
Other	2,333	0.86%	12	0.68%	710	0.81%	1,611	0.89%
Unknown	23,313	8.61%	441	24.96%	5,770	6.60%	17,102	9.41%
Not Reported	4,344	1.60%	14	0.79%	1,078	1.23%	3,252	1.79%
<b>TOTAL</b>	<b>270,858</b>	<b>100.00%</b>	<b>1,767</b>	<b>100.00%</b>	<b>87,411</b>	<b>100.00%</b>	<b>181,680</b>	<b>100.00%</b>
*Illegal drugs or narcotics								



## Section 6: - Alcohol Related Crashes

**T**he statistics in the Alcohol Related section represent those crashes where the investigating officer indicated that a driver had been drinking an alcoholic beverage and may or may not be substantiated by a blood or breath test. No assumption is to be made that the person was legally intoxicated (blood alcohol content of 0.08% or higher) at the time the crash took place.

### Economic Loss Due to Alcohol Related Crashes in Arizona for 2006

<b>Fatalities</b>	\$381,150,000
<b>Incapacitating Injury</b>	\$58,500,000
<b>Non-Incapacitating Injury</b>	\$47,664,400
<b>Possible Injury</b>	\$25,875,000
<b>Property Damage Only</b>	\$34,013,600
<b>Total</b>	<b>\$547,203,000</b>
Refer to note on Page 4 for Economic Loss Estimates	

Table 6 - 1

### Alcohol Related Crash History

Year	Alcohol Related Crashes	Percent of all Crashes	Persons Killed	Percent of all Fatalities
2002	8,157	6.05%	280	24.73%
2003	7,837	5.97%	299	26.67%
2004	8,013	5.78%	256	22.24%
2005	7,689	5.50%	232	19.61%
2006	7,693	5.49%	315	24.31%

Table 6 - 2

### Manner of Collision in Alcohol Related Crashes

Manner of Collision Type	Number of Crashes							
	Total	Percent of All Crashes	Fatal	Percent of Fatal Crashes	Injury	Percent of Injury Crashes	PDO	Percent of PDO Crashes
Sideswipe (same)	497	10.72%	4	3.25%	138	6.97%	355	14.01%
Sideswipe (opposite)	158	3.41%	3	2.44%	55	2.78%	100	3.95%
Angle	909	19.60%	51	41.46%	431	21.77%	427	16.85%
Left Turn	480	10.35%	15	12.20%	277	13.99%	188	7.42%
Rear-End	1,975	42.59%	16	13.01%	814	41.11%	1,145	45.19%
Head-On	224	4.83%	22	17.89%	127	6.41%	75	2.96%
Backing	101	2.18%	0	0.00%	8	0.40%	93	3.67%
Other	216	4.66%	8	6.50%	97	4.90%	111	4.38%
Non-Contact (mc)	6	0.13%	3	2.44%	3	0.15%	0	0.00%
Non-Contact (not mc)	13	0.28%	1	0.81%	6	0.30%	6	0.24%
U-Turn	58	1.25%	0	0.00%	24	1.21%	34	1.34%
<b>TOTAL</b>	<b>4,637</b>	<b>100%</b>	<b>123</b>	<b>100%</b>	<b>1,980</b>	<b>100%</b>	<b>2,534</b>	<b>100%</b>

Table 6 - 3

## Alcohol Related Crashes by First Harmful Event

FHE Type	Number of Crashes				Number of Persons	
	Total	Fatal	Injury	PDO	Killed	Injured
Overturning	399	55	265	79	65	424
Collision with other MV	4,011	113	1,787	2,111	144	3,527
Collision with Pedestrian	56	12	41	3	12	53
Collision with Pedalcyclist	30	1	26	3	1	28
Collision with MV on other Rdway	11	0	10	1	0	22
Animal	16	0	5	11	0	5
Fixed Object	2,445	71	921	1,453	76	1,210
Object in Roadway	1	0	1	0	0	1
Other*	526	4	129	393	4	149
Miscellaneous**	198	10	94	94	13	115
<b>TOTAL</b>	<b>7,693</b>	<b>266</b>	<b>3,279</b>	<b>4,148</b>	<b>315</b>	<b>5,534</b>
*Includes Collision with Parked Vehicles, Trains, Machinery, and Unknown Objects						
**Includes Collision with Special Devices, Objects dropped from vehicles, Non-fixed Objects, as well as Vehicle Fires						

Table 6 - 4

## Alcohol Related Crashes by Vehicle Type

Motor Vehicle Type	Vehicle Counts				
	Total	Percent	Fatal	Injury	PDO
Passenger Car (Includes cars with trailer)	5,403	69.47%	168	2,264	2,971
Pickup Trucks and Vans	2,033	26.14%	74	836	1,123
Pickup Truck With Camper	10	0.13%	2	5	3
Other Vehicle With Camper	0	0.00%	0	0	0
Truck Tractor Only	2	0.03%	0	1	1
Truck Tractor and Semi-Trailer	16	0.21%	0	6	10
Other Truck Combination	23	0.30%	2	7	14
Farm Tractor and/or Farm Equipment	0	0.00%	0	0	0
Taxicab	1	0.01%	0	0	1
Commercial Bus	0	0.00%	0	0	0
Non-Commercial Bus	3	0.04%	0	2	1
School Bus	1	0.01%	0	0	1
Motorcycle (two or three wheel)	235	3.02%	32	183	20
Motorscooter or Motor Bicycle	2	0.03%	1	1	0
Moped	0	0.00%	0	0	0
Recreational Vehicle	2	0.03%	0	2	0
Motor Home or House Car	0	0.00%	0	0	0
Vehicle With Special Controls (Dual, Etc.)	0	0.00%	0	0	0
Emergency Vehicle (Inc. Privately Owned)	0	0.00%	0	0	0
Military	0	0.00%	0	0	0
Other Types Of Vehicles	4	0.05%	1	2	1
Vehicle Type Not Reported	43	0.55%	6	17	20
<b>TOTAL</b>	<b>7,778</b>	<b>100.00%</b>	<b>286</b>	<b>3,326</b>	<b>4,166</b>

Table 6 - 5

### Lighting Conditions in Alcohol Related Crashes

Type of Lighting Conditions	Incident Counts				Person Counts	
	Total	Fatal	Injury	PDO	Killed	Injured
Not Reported	10	2	4	4	2	6
Daylight	2,098	65	893	1,140	79	1,525
Dawn or Dusk	465	16	229	220	18	414
Darkness	5,120	183	2,153	2,784	216	3,589
<b>TOTAL</b>	<b>7,693</b>	<b>266</b>	<b>3,279</b>	<b>4,148</b>	<b>315</b>	<b>5,534</b>

Table 6 - 6

### Road Surface Conditions in Alcohol Related Crashes

Type of Road Surface Condition	Incident Counts				Person Counts	
	Total	Fatal	Injury	PDO	Killed	Injured
Dry	7,182	231	3,078	3,873	278	5,182
Wet	281	14	106	161	15	188
Not Reported, No Unusual Condition	137	16	58	63	17	95
Sand, Mud, Dirt, Oil or Gravel	59	2	25	32	2	47
Snow	10	1	3	6	1	4
Slush	6	0	3	3	0	5
Ice	8	0	2	6	0	5
Other	5	1	3	1	1	7
Unknown	5	1	1	3	1	1
<b>TOTAL</b>	<b>7,693</b>	<b>266</b>	<b>3,279</b>	<b>4,148</b>	<b>315</b>	<b>5,534</b>

Table 6 - 7

### When Alcohol Related Crashes Occurred in 2006

Time of Day	Total	Weekday	Weekend*
Daytime**	2,035	1,182	853
Nighttime	5,658	2,138	3,520
<b>Total</b>	<b>7,693</b>	<b>3,320</b>	<b>4,373</b>
*Weekend begins at 6:00 p.m. on Friday and continues through 6:00 a.m. Monday. All other times and days are considered Weekdays.			
**Day time refers to the hours between 6:00 a.m. and 6:00 p.m.			

Table 6 - 8

**Driver Involvement by Age in Alcohol Related Crashes**

Driver Age Group	Driver Counts							
	Total	Percent of Total	Fatal	Percent of Fatal	Injury	Percent of Injury	PDO	Percent of PDO
15 & Under	14	0.18%	0	0.00%	10	0.30%	4	0.10%
16	53	0.68%	0	0.00%	21	0.63%	32	0.77%
17	113	1.45%	6	2.10%	53	1.59%	54	1.30%
18	195	2.51%	10	3.50%	81	2.44%	104	2.50%
19	293	3.77%	14	4.90%	125	3.76%	154	3.70%
20	319	4.10%	16	5.59%	127	3.82%	176	4.22%
21	404	5.19%	15	5.24%	170	5.11%	219	5.26%
22	391	5.03%	12	4.20%	163	4.90%	216	5.18%
23	350	4.50%	13	4.55%	160	4.81%	177	4.25%
24	326	4.19%	6	2.10%	153	4.60%	167	4.01%
25-34	2,224	28.59%	94	32.87%	931	27.99%	1,199	28.78%
35-44	1,370	17.61%	48	16.78%	593	17.83%	729	17.50%
45-54	968	12.45%	28	9.79%	408	12.27%	532	12.77%
55-64	393	5.05%	14	4.90%	198	5.95%	181	4.34%
65-74	104	1.34%	5	1.75%	44	1.32%	55	1.32%
75 & Older	54	0.69%	1	0.35%	22	0.66%	31	0.74%
Not Stated	207	2.66%	4	1.40%	67	2.01%	136	3.26%
<b>TOTAL</b>	<b>7,778</b>	<b>100.00%</b>	<b>286</b>	<b>100.00%</b>	<b>3,326</b>	<b>100.00%</b>	<b>4,166</b>	<b>100.00%</b>

Table 6 - 9

**Gender of Drivers Involved in Alcohol Related Crashes**

Gender of Driver	Driver Counts							
	Total	Percent of Total	Fatal	Percent of Fatal	Injury	Percent of Injury	PDO	Percent of PDO
Male	6,137	78.90%	235	82.17%	2,629	79.04%	3,273	78.56%
Female	1,560	20.06%	48	16.78%	678	20.38%	834	20.02%
Not Reported	81	1.04%	3	1.05%	19	0.57%	59	1.42%
<b>TOTAL</b>	<b>7,778</b>	<b>100.00%</b>	<b>286</b>	<b>100.00%</b>	<b>3,326</b>	<b>100.00%</b>	<b>4,166</b>	<b>100.00%</b>

*In total crashes across the state, 55.94% of the drivers were males. When alcohol was involved, males accounted for 78.90% of the drivers.*

## Section 6: - Alcohol Related Crashes

Table 6 - 10

### Restraint Usage for Drinking Drivers

Severity of Injury	Not Reported	None Used	Lap Belt	Lap & Shoulder	Passive Belt	Passive & Lap	Protective Helmet	Other
Fatal	27	120	0	29	0	1	7	0
Incapacitating	130	212	3	118	0	0	7	0
No Injury	1,583	380	29	3,012	2	2	4	0
Non-Incapacitating Injury	326	261	4	484	0	1	9	0
Not Reported	0	0	0	0	0	0	0	0
Possible Injury	262	116	7	340	0	0	5	2
Unknown	224	15	1	54	0	0	0	1
<b>TOTALS</b>	<b>2,552</b>	<b>1,104</b>	<b>44</b>	<b>4,037</b>	<b>2</b>	<b>4</b>	<b>32</b>	<b>3</b>

Table 6 - 11

### Persons Killed and Injured in Alcohol Related Crashes

Age of Victim	Persons Killed			Persons Injured			
	Total	Male	Female	Total	Male	Female	Gender Unknown
<b>0-4</b>	3	2	1	106	56	49	1
<b>5-9</b>	6	4	2	120	55	64	1
<b>10-14</b>	1	0	1	124	57	66	1
<b>15-19</b>	38	28	10	686	423	263	0
<b>20-24</b>	50	35	15	1,112	767	344	1
<b>25-34</b>	95	76	19	1,329	902	426	1
<b>35-44</b>	51	38	13	838	507	330	1
<b>45-54</b>	40	31	9	592	368	224	0
<b>55-64</b>	21	13	8	340	197	142	1
<b>65-74</b>	7	3	4	98	63	35	0
<b>75 &amp; Older</b>	3	3	0	59	31	28	0
<b>Not Stated</b>	0	0	0	130	80	46	4
<b>TOTAL</b>	<b>315</b>	<b>233</b>	<b>82</b>	<b>5,534</b>	<b>3,506</b>	<b>2,017</b>	<b>11</b>

Chart 6 - 1

All Alcohol Related Crashes vs. Fatal Alcohol Related Crashes - Weekdays

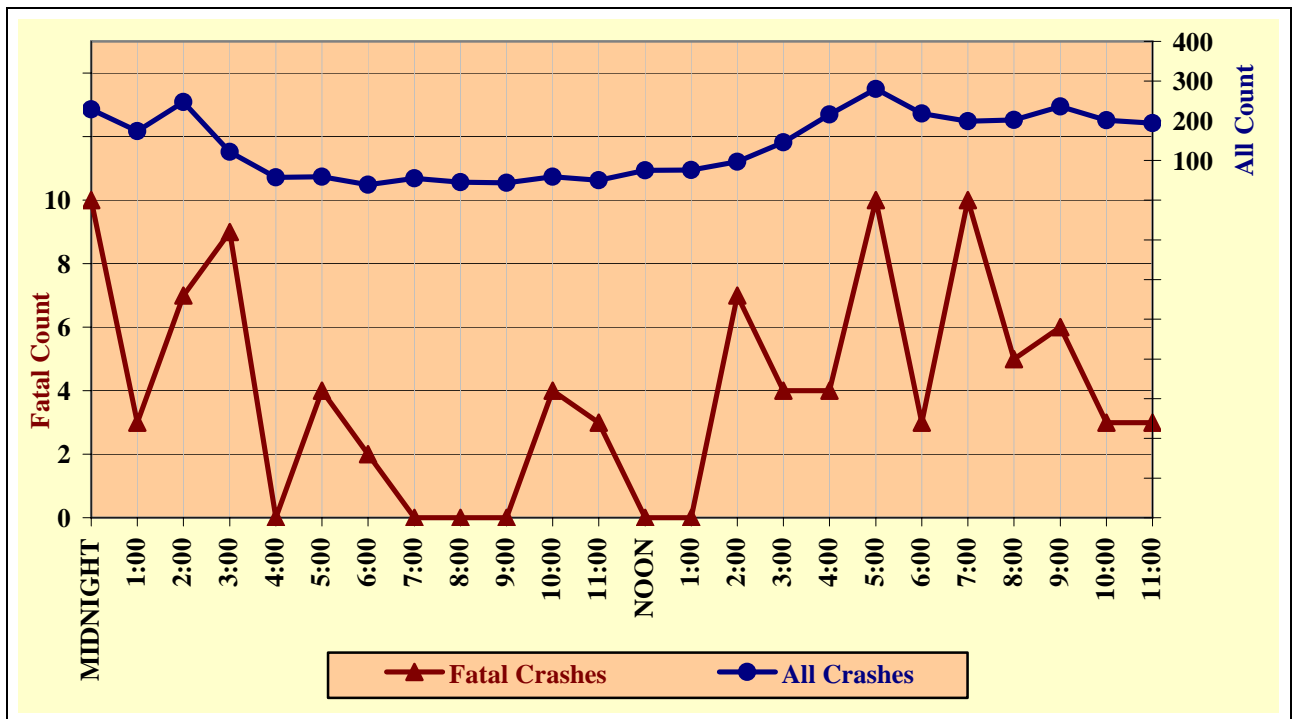
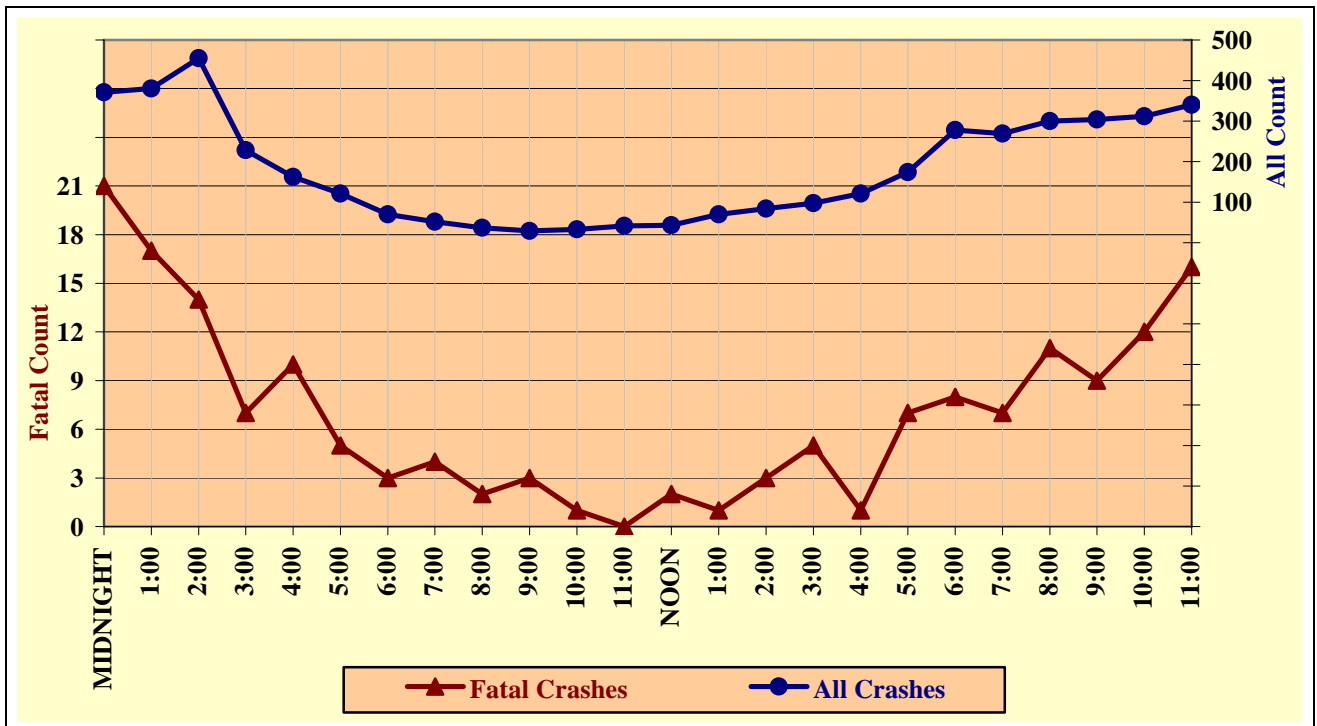


Chart 6 - 2

All Alcohol Related Crashes vs. Fatal Alcohol Related Crashes - Weekends



## Section 6: - Alcohol Related Crashes

Table 6 - 12

### Alcohol Related Crashes by Hour and Day of Week

Hour Beginning	Total Crashes		Monday		Tuesday		Wednesday		Thursday		Friday		Saturday		Sunday	
	All	Fatal	All	Fatal	All	Fatal	All	Fatal	All	Fatal	All	Fatal	All	Fatal	All	Fatal
<b>MIDNIGHT</b>	600	31	66	4	29	0	51	2	62	2	87	6	151	12	154	5
<b>1:00</b>	554	20	57	2	31	1	29	2	47	0	67	0	172	8	151	7
<b>2:00</b>	702	21	49	3	43	1	48	2	73	0	83	4	192	8	214	3
<b>3:00</b>	350	16	15	0	22	2	30	2	36	2	34	3	106	3	107	4
<b>4:00</b>	219	10	18	1	10	0	15	0	13	0	19	0	78	6	66	3
<b>5:00</b>	180	9	14	0	16	1	12	1	12	0	19	2	54	1	53	4
<b>6:00</b>	109	5	8	0	7	0	6	0	6	0	12	2	36	2	34	1
<b>7:00</b>	107	4	11	0	6	0	15	0	7	0	16	0	21	1	31	3
<b>8:00</b>	82	2	8	0	9	0	11	0	6	0	11	0	15	0	22	2
<b>9:00</b>	73	3	8	0	9	0	11	0	6	0	10	0	20	3	9	0
<b>10:00</b>	92	5	14	3	10	1	6	0	15	0	14	0	18	0	15	1
<b>11:00</b>	92	3	9	0	6	2	10	1	8	0	17	0	26	0	16	0
<b>NOON</b>	118	2	16	0	14	0	18	0	14	0	13	0	27	1	16	1
<b>1:00</b>	146	1	18	0	13	0	10	0	16	0	19	0	45	0	25	1
<b>2:00</b>	181	10	21	1	14	0	20	2	21	2	21	2	46	1	38	2
<b>3:00</b>	244	9	26	1	27	1	24	0	29	2	40	0	55	4	43	1
<b>4:00</b>	337	5	41	1	45	1	38	1	34	0	58	1	71	0	50	1
<b>5:00</b>	454	17	41	4	42	0	46	1	53	3	98	2	91	4	83	3
<b>6:00</b>	496	11	55	0	54	1	51	0	58	2	73	1	108	5	97	2
<b>7:00</b>	468	17	49	2	41	4	51	4	58	0	103	2	83	1	83	4
<b>8:00</b>	502	16	48	0	40	2	46	0	68	3	107	5	101	1	92	5
<b>9:00</b>	540	15	54	4	60	1	52	0	70	1	132	3	98	4	74	2
<b>10:00</b>	513	15	39	2	47	1	57	0	58	0	124	6	121	3	67	3
<b>11:00</b>	534	19	25	2	57	0	52	0	60	1	136	8	150	6	54	2
<b>TOTAL</b>	<b>7,693</b>	<b>266</b>	<b>710</b>	<b>30</b>	<b>652</b>	<b>19</b>	<b>709</b>	<b>18</b>	<b>830</b>	<b>18</b>	<b>1,313</b>	<b>47</b>	<b>1,885</b>	<b>74</b>	<b>1,594</b>	<b>60</b>

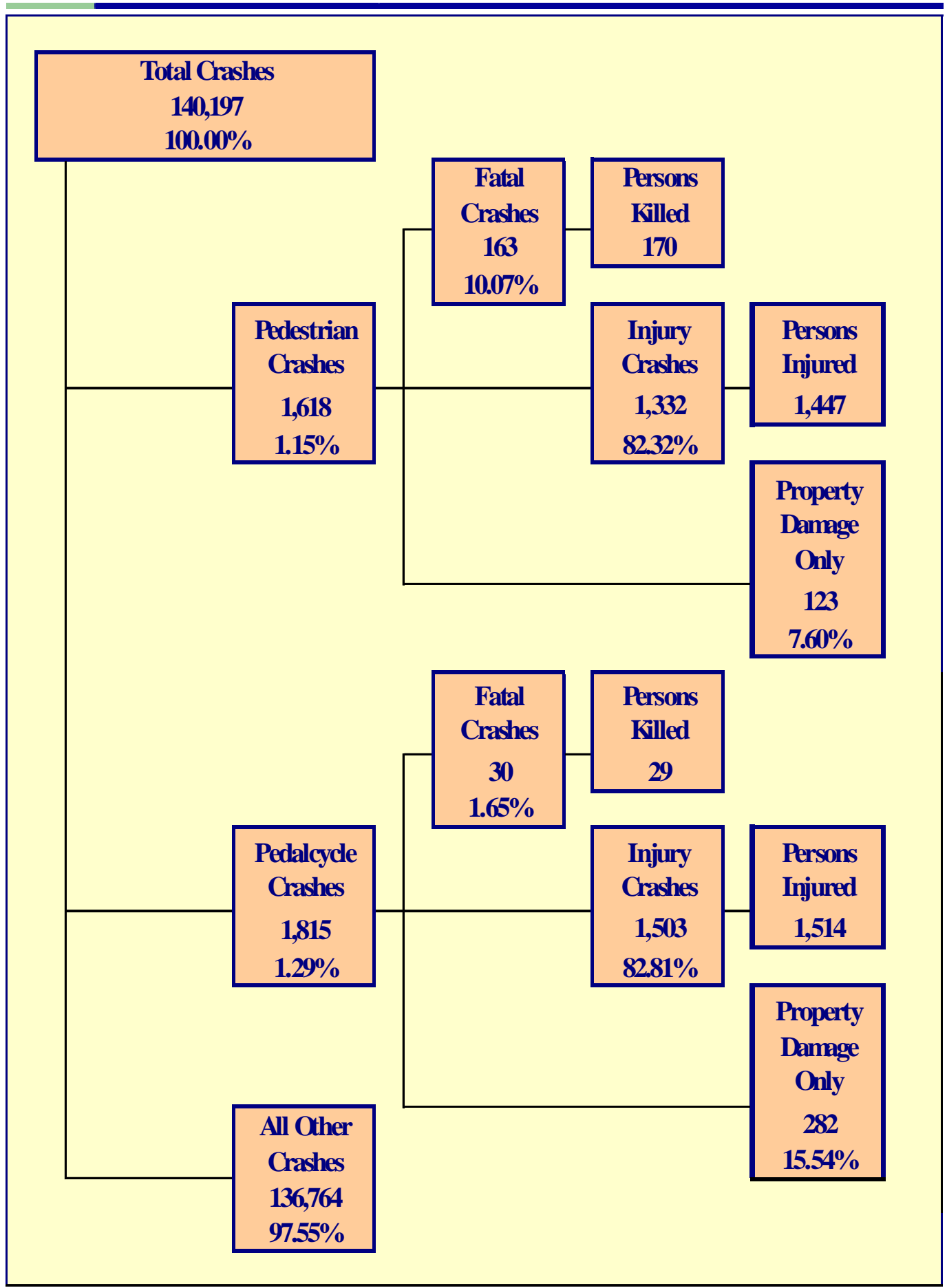


Table 7 - 1

### Pedestrians Killed and Injured By Age and Gender

Age Group	Victims Of Motor Vehicle Crashes						
	Pedestrians Killed			Pedestrians Injured			
	Total	Male	Female	Total	Male	Female	Gender Unknown
0-4	1	1	0	41	24	17	0
5-9	2	2	0	81	48	33	0
10-14	1	1	0	134	85	49	0
15-19	7	5	2	183	101	81	1
20-24	26	23	3	131	88	42	1
25-34	21	18	3	190	122	68	0
35-44	28	22	6	202	132	70	0
45-54	39	29	10	191	123	68	0
55-64	20	15	5	122	74	47	1
65-74	12	9	3	61	41	20	0
75 & Older	12	6	6	44	22	22	0
Not Stated	1	1	0	67	39	23	5
<b>TOTAL</b>	<b>170</b>	<b>132</b>	<b>38</b>	<b>1,447</b>	<b>899</b>	<b>540</b>	<b>8</b>

Table 7 - 2

### Pedestrian Crashes by Geographic Location

Category	Total	Urban	Rural
Number of Crashes	1,618	1,463	155
Persons Killed	170	112	58
Persons Injured	1,447	1,349	98
Property Damage Only	123	114	9

Table 7 - 3

### Pedestrian Crash History

Number of Pedestrians		
Year	Total Killed	Total Injured
2002	158	1,484
2003	126	1,528
2004	135	1,571
2005	165	1,476
2006	170	1,447

Table 7 - 4

**Pedestrians Killed By Age and Action**

Pedestrian Action	Total	Age Group of Pedestrian								
		0-4	5-9	10-14	15-19	20-24	25-44	44-64	65 & Older	Not Stated
Crossing Road	100	0	1	1	2	14	22	39	20	1
Walking With Traffic	7	0	0	0	0	1	0	5	1	0
Walking Against Traffic	8	0	0	0	0	1	4	2	1	0
Standing	6	0	0	0	0	1	4	1	0	0
Lying	6	0	1	0	0	1	3	1	0	0
Getting on/off Vehicle	0	0	0	0	0	0	0	0	0	0
Working on/pushing Veh	4	0	0	0	0	0	2	1	1	0
Working on Road	2	0	0	0	0	1	0	1	0	0
Other	8	0	0	0	0	1	4	3	0	0
Unknown	29	1	0	0	5	6	10	6	1	0
<b>TOTAL</b>	<b>170</b>	<b>1</b>	<b>2</b>	<b>1</b>	<b>7</b>	<b>26</b>	<b>49</b>	<b>59</b>	<b>24</b>	<b>1</b>

Table 7 - 5

**Pedestrians Injured by Age and Action**

Pedestrian Action	Total	Age Group of Pedestrian								
		0-4	5-9	10-14	15-19	20-24	25-44	44-64	65 & Older	Not Stated
Crossing Road	847	20	64	91	104	70	221	177	60	40
Walking With Traffic	49	0	1	5	8	8	8	11	6	2
Walking Against Traffic	78	2	2	6	11	9	26	16	4	2
Standing	77	3	2	4	11	5	25	19	3	5
Lying	11	0	0	1	2	2	4	2	0	0
Getting on/off Vehicle	9	1	0	0	2	2	3	1	0	0
Working on/pushing Veh	14	0	0	1	4	0	5	2	2	0
Working on Road	6	0	0	1	0	1	3	1	0	0
Other	173	9	7	7	20	16	51	43	15	5
Unknown	183	6	5	18	21	18	46	41	15	13
<b>TOTAL</b>	<b>1,447</b>	<b>41</b>	<b>81</b>	<b>134</b>	<b>183</b>	<b>131</b>	<b>392</b>	<b>313</b>	<b>105</b>	<b>67</b>

Table 7 - 6

**Pedestrian Physical Condition in Motor Vehicle Crashes**

Type of Condition	Pedestrian Counts									
	Total	Percent of Total	Fatal	Percent of Fatal	Injury	Percent of Injury	PDO	Percent of PDO	Unknown	Pct of Unknown
No Apparent Influence	1,017	58.55%	34	20.00%	917	63.37%	60	64.52%	6	22.22%
Had Been Drinking	269	15.49%	60	35.29%	201	13.89%	6	6.45%	2	7.41%
Appeared To Be Under The Influence of Drugs*	7	0.40%	3	1.76%	4	0.28%	0	0.00%	0	0.00%
Ill-Ability Influenced	0	0.00%	0	0.00%	0	0.00%	0	0.00%	0	0.00%
Sleepy-Fatigued	2	0.12%	0	0.00%	2	0.14%	0	0.00%	0	0.00%
Physical Impairment	12	0.69%	0	0.00%	8	0.55%	3	3.23%	1	3.70%
Prescription Drugs	3	0.17%	0	0.00%	3	0.21%	0	0.00%	0	0.00%
Other	19	1.09%	1	0.59%	14	0.97%	4	4.30%	0	0.00%
Unknown	297	17.10%	69	40.59%	203	14.03%	10	10.75%	15	55.56%
Not Reported	111	6.39%	3	1.76%	95	6.57%	10	10.75%	3	11.11%
<b>TOTAL</b>	<b>1,737</b>	<b>100%</b>	<b>170</b>	<b>100%</b>	<b>1,447</b>	<b>100%</b>	<b>93</b>	<b>100%</b>	<b>27</b>	<b>100%</b>
*Illegal drugs or narcotics										

Table 7 - 7

### Lighting Conditions in Pedestrian Crashes

Type of Lighting Conditions	Incident Counts			
	Total	Fatal	Injury	PDO
Not Reported	7	2	4	1
Daylight	902	36	806	60
Dawn or Dusk	112	13	92	7
Darkness	615	120	469	26
<b>TOTAL</b>	<b>1,636</b>	<b>171</b>	<b>1,371</b>	<b>94</b>

Table 7 - 8

### Weather Conditions in Pedestrian Crashes

Type of Conditions	Incident Counts			
	Total	Fatal	Injury	PDO
Clear	1,427	136	1,212	79
Cloudy	141	13	118	10
Sleet/Hail	2	0	1	1
Rain	40	6	32	2
Snow	3	0	3	0
Severe Crosswinds	1	0	1	0
Blowing Sand, Soil, Dirt, Snow	2	2	0	0
Fog, Smog, Smoke	1	0	1	0
Not Reported	19	14	3	2
<b>TOTAL</b>	<b>1,636</b>	<b>171</b>	<b>1,371</b>	<b>94</b>

Table 7 - 9

### Pedalcyclists Killed and Injured by Age and Gender

Age Group	Victims Of Motor Vehicle Crashes						
	Pedalcyclists Killed			Pedalcyclists Injured			
	Total	Male	Female	Total	Male	Female	Gender Unknown
0-4	0	0	0	4	3	1	0
5-9	0	0	0	53	37	16	0
10-14	1	1	0	232	190	40	2
15-19	0	0	0	224	174	50	0
20-24	0	0	0	163	124	39	0
25-34	5	5	0	192	151	41	0
35-44	4	3	1	244	203	40	1
45-54	9	9	0	209	165	44	0
55-64	4	4	0	81	74	7	0
65-74	4	4	0	35	30	5	0
75 & Older	2	2	0	21	21	0	0
Not Stated	0	0	0	56	48	8	0
<b>TOTAL</b>	<b>29</b>	<b>28</b>	<b>1</b>	<b>1,514</b>	<b>1,220</b>	<b>291</b>	<b>3</b>

Table 7 - 10

### Pedalcycle Crashes by Geographic Location

Category	Total	Urban	Rural
Number of Crashes	1,815	1,673	142
Persons Killed	29	18	11
Persons Injured	1,514	1,402	112
Property Damage Only	282	260	22

Table 7 - 11

### Pedalcycle Crash History

Number of Pedalcyclists		
Year	Total Killed	Total Injured
2002	15	1,620
2003	15	1,622
2004	27	1,705
2005	36	1,723
2006	29	1,514

Table 7 - 12

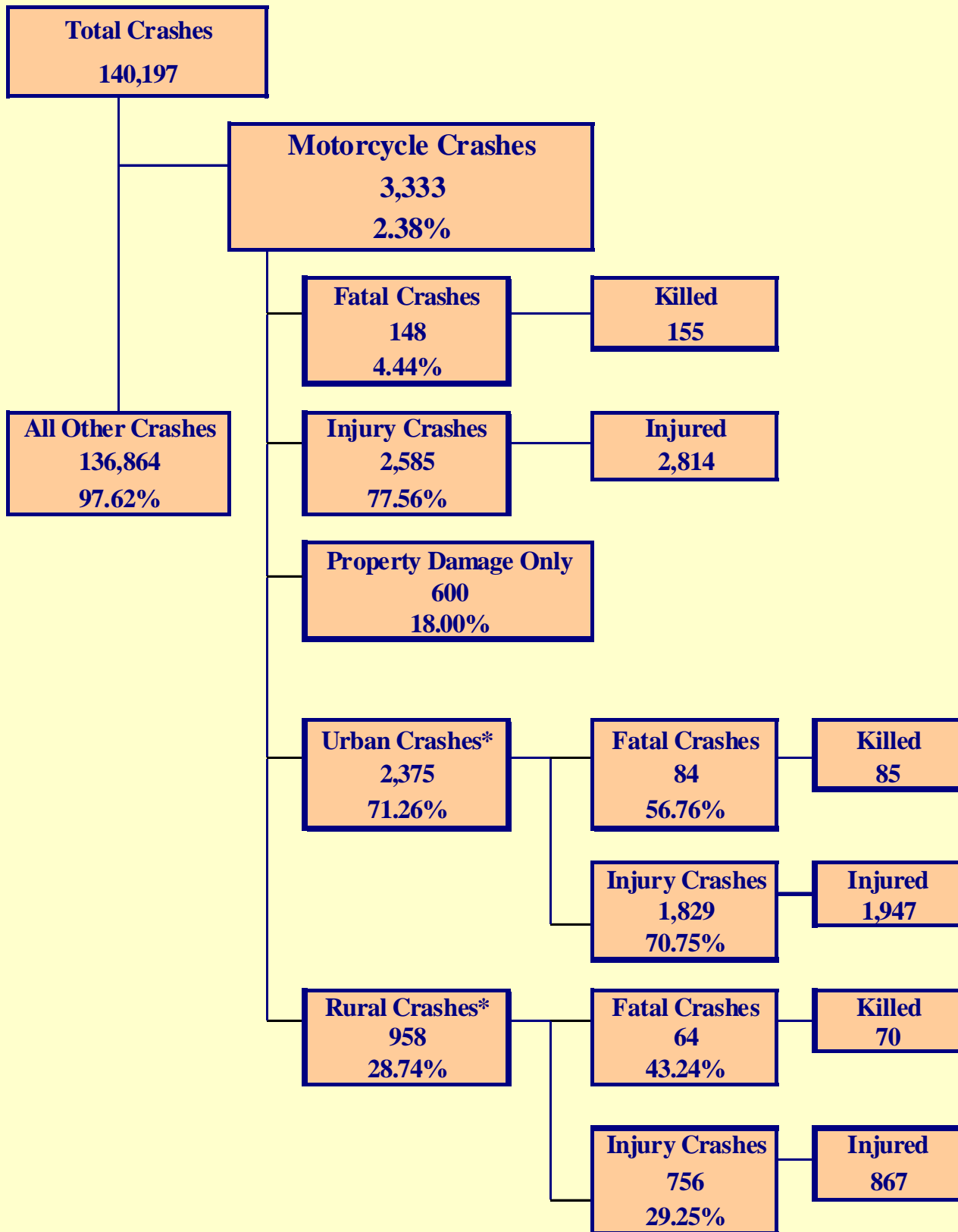
### Lighting Conditions in Pedalcyclist Crashes

Type of Lighting Conditions	Incident Counts			
	Total	Fatal	Injury	PDO
Daylight	1,387	13	1,162	212
Dawn or Dusk	129	2	107	20
Darkness	300	15	237	48
Not Reported	9	0	5	4
<b>TOTAL</b>	<b>1,825</b>	<b>30</b>	<b>1,511</b>	<b>284</b>

Table 7 - 13

### Weather Conditions in Pedalcyclist Crashes

Type of Conditions	Incident Counts			
	Total	Fatal	Injury	PDO
Clear	1,664	26	1,386	252
Cloudy	131	3	104	24
Sleet/Hail	1	0	1	0
Rain	17	0	11	6
Snow	0	0	0	0
Severe Crosswinds	2	0	2	0
Blowing Sand, Soil, Dirt, Snow	2	0	2	0
Fog, Smog, Smoke	0	0	0	0
Not Reported	8	1	5	2
<b>TOTAL</b>	<b>1,825</b>	<b>30</b>	<b>1,511</b>	<b>284</b>



\*This figure includes Property Damage Only, 462 (Urban Crashes); 138 (Rural Crashes)

Chart 8 - 1

MC Fatalities by Year

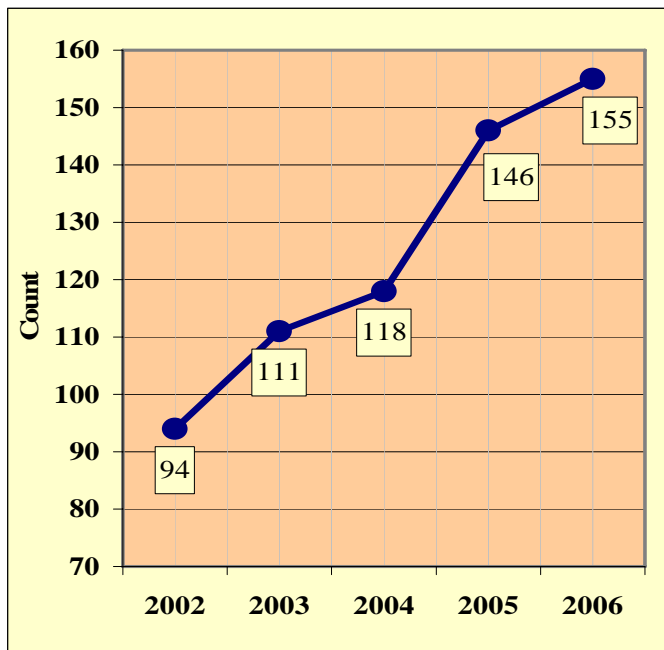
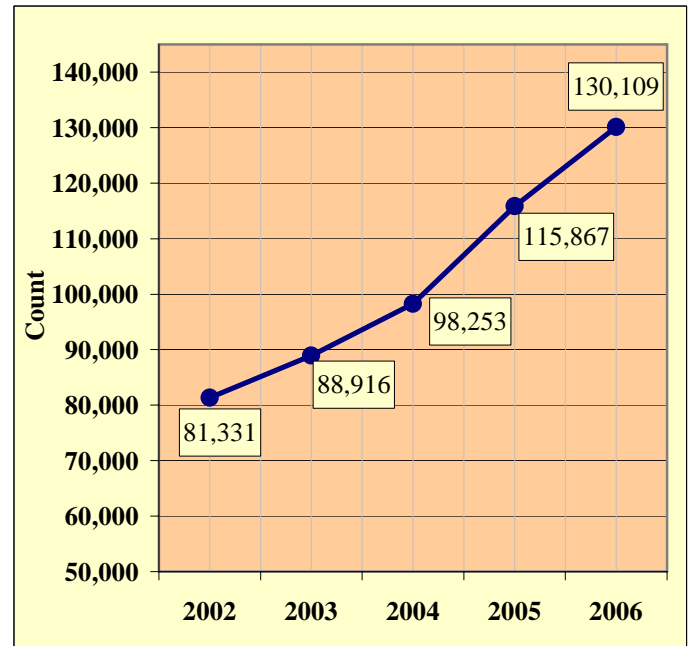


Chart 8 - 2

MC Registrations in Arizona



Total Point-in-Time Number of Registered Motorcycles at the end of calendar year 2006  
(Source: MVD - MV988 MV630419, Currently Registered Vehicles by County Listing, dated 12/31/2006.)

Chart 8 - 3

Fatality Rate per Registered MC

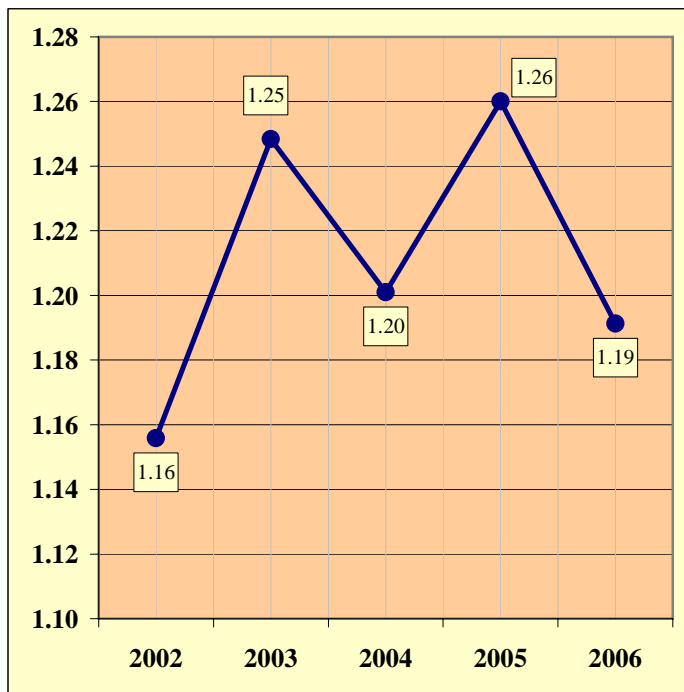


Chart 8 - 4

Percent of MC Crashes to All Crashes

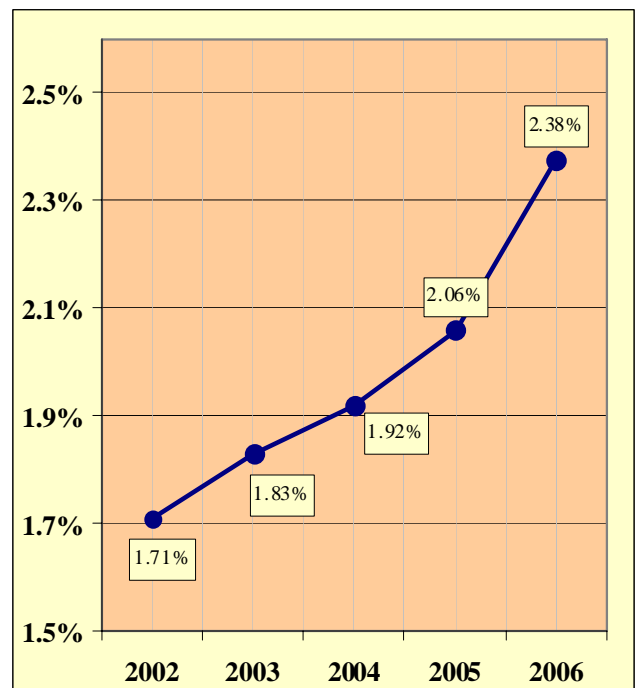


Table 8 - 1

### MC Crashes by First Harmful Event

FHE Type	Number of Crashes			
	Total	Fatal	Injury	PDO
Overturning	97	7	85	5
Collision with other MV	1,857	84	1,325	448
Collision with Pedestrian	17	0	16	1
Collision with Pedalcyclist	4	0	4	0
Collision with MV on other Rdway	2	1	1	0
Animal	34	1	27	6
Fixed Object	385	34	322	29
Object in Roadway	11	0	9	2
Other*	89	5	55	29
Miscellaneous**	837	16	741	80
<b>TOTAL</b>	<b>3,333</b>	<b>148</b>	<b>2,585</b>	<b>600</b>
*Includes Collision with Parked Vehicles, Trains, Machinery, and Unknown Objects				
**Includes Collision with Special Devices, Objects dropped from vehicles, Non-fixed Objects, as well as Vehicle Fires				

Table 8 - 2

### Lighting Conditions in MC Crashes

Type of Lighting Conditions	Incident Counts			
	Total	Fatal	Injury	PDO
Not Reported	8	1	5	2
Daylight	2,242	86	1,761	395
Dawn or Dusk	210	10	153	47
Darkness	873	51	666	156
<b>TOTAL</b>	<b>3,333</b>	<b>148</b>	<b>2,585</b>	<b>600</b>

Table 8 - 3

### Road Surface Conditions in MC Crashes

Type of Road Surface Condition	Incident Counts			
	Total	Fatal	Injury	PDO
Dry	3,102	134	2,414	13
Wet	58	2	38	554
Not Reported, No Unusual Condition	64	6	45	18
Sand, Mud, Dirt, Oil or Gravel	91	4	75	12
Snow	3	0	3	0
Slush	0	0	0	0
Ice	0	0	0	0
Other	8	0	7	1
Unknown	7	2	3	2
<b>TOTAL</b>	<b>3,333</b>	<b>148</b>	<b>2,585</b>	<b>600</b>

Table 8 - 4

**MC Crashes by Geographic Location**

Type of Crash	Number of Crashes and % of Total				
	Total	Rural	% of Total	Urban	% of Total
<b>Total</b>	3,333	958	28.74%	2,375	71.26%
<b>Fatal</b>	148	64	43.24%	84	56.76%
<b>Injury</b>	2,585	756	29.25%	1,829	70.75%

Table 8 - 5

**Operator Involvement by Age in MC Crashes**

Age of Operator	Operator Counts				
	Total	Percent of Total	Fatal	Injury	PDO
<b>15 &amp; Under</b>	56	1.64%	1	48	7
<b>16</b>	30	0.88%	2	24	4
<b>17</b>	38	1.11%	3	29	6
<b>18</b>	73	2.14%	6	59	8
<b>19</b>	101	2.96%	6	83	12
<b>20</b>	112	3.28%	5	92	15
<b>21</b>	108	3.16%	4	89	15
<b>22</b>	101	2.96%	4	87	10
<b>23</b>	101	2.96%	4	84	13
<b>24</b>	113	3.31%	4	96	13
<b>25-34</b>	660	19.33%	23	515	122
<b>35-44</b>	657	19.24%	31	508	118
<b>45-54</b>	668	19.56%	38	512	118
<b>55-64</b>	362	10.60%	20	285	57
<b>65-74</b>	86	2.52%	4	65	17
<b>75 &amp; Older</b>	19	0.56%	1	13	5
<b>Not Stated</b>	130	3.81%	1	59	70
<b>TOTAL</b>	<b>3,415</b>	<b>100.00%</b>	<b>157</b>	<b>2,648</b>	<b>610</b>

Table 8 - 6

**Alcohol Related MC Crashes**

<b>Total number of impaired operators</b>	235
<b>Total number of fatal crashes</b>	32
<b>Total number of injury crashes</b>	183
<b>Total number of PDO crashes</b>	20

## Section 8: - Motorcycle (MC) Crashes

Table 8 - 7

### MC Operators Involved in Fatal Crashes by License Status

License Status	2004		2005		2006	
	Total Fatal Crashes	Percent of Fatal Crashes	Total Fatal Crashes	Percent of Fatal Crashes	Total Fatal Crashes	Percent of Fatal Crashes
No license	3	2.86%	4	3.08%	4	2.38%
Invalid	19	18.10%	32	24.62%	39	23.21%
Valid	81	77.14%	94	72.31%	120	71.43%
Unknown	2	1.90%	0	0.00%	5	2.98%
<b>TOTALS</b>	<b>105</b>	<b>100.00%</b>	<b>130</b>	<b>100.00%</b>	<b>168</b>	<b>100.00%</b>
<b>Note:</b> Includes only motorcycle operators involved in fatal crashes.						
<b>Source:</b> <a href="https://intranet.fars.us/farsquery/manual.cfm?year=2006&amp;datasource=FARSINTRA2006&amp;tbl=iBODY&amp;group id=%20&amp;i state num=4">https://intranet.fars.us/farsquery/manual.cfm?year=2006&amp;datasource=FARSINTRA2006&amp;tbl=iBODY&amp;group id=%20&amp;i state num=4</a>						

Table 8 - 8

### MC Operator's Helmet Use

Severity of Injury	Helmet Used	Percent of Total	No Helmet	Percent of Total	Unknown	Percent of Total	Total	Percent of Total
Fatal	47	3.91%	78	5.34%	14	1.86%	139	4.07%
Incapacitating Injury	240	19.97%	316	21.64%	128	17.00%	684	20.03%
No Injury	218	18.14%	262	17.95%	150	19.92%	630	18.45%
Non-Incapacitating Injury	500	41.60%	569	38.97%	247	32.80%	1,316	38.54%
Possible Injury	191	15.89%	218	14.93%	149	19.79%	558	16.34%
Unknown	6	0.50%	17	1.16%	65	8.63%	88	2.58%
<b>TOTALS</b>	<b>1,202</b>	<b>100.00%</b>	<b>1,460</b>	<b>100.00%</b>	<b>753</b>	<b>100.00%</b>	<b>3,415</b>	<b>100.00%</b>

Table 8 - 9

### MC Passenger's Helmet Use

Severity of Injury	Helmet Used	Percent of Total	No Helmet	Percent of Total	Unknown	Percent of Total	Total	Percent of Total
Fatal	4	3.85%	11	5.70%	1	1.96%	16	4.60%
Incapacitating Injury	17	16.35%	41	21.24%	5	9.80%	63	18.10%
No Injury	20	19.23%	30	15.54%	17	33.33%	67	19.25%
Non-Incapacitating Injury	47	45.19%	79	40.93%	17	33.33%	143	41.09%
Possible Injury	15	14.42%	28	14.51%	7	13.73%	50	14.37%
Unknown	1	0.96%	4	2.07%	4	7.84%	9	2.59%
<b>TOTALS</b>	<b>104</b>	<b>100.00%</b>	<b>193</b>	<b>100.00%</b>	<b>51</b>	<b>100.00%</b>	<b>348</b>	<b>100.00%</b>

Table 8 - 10

**MC Operators and Passengers Killed and Injured**

Age Of Victim	Persons Killed			Persons Injured			
	Total	Male	Female	Total	Male	Female	Gender Unknown
0-4	0	0	0	9	5	4	0
5-9	1	1	0	16	7	9	0
10-14	2	2	0	53	33	20	0
15-19	16	15	1	235	183	51	1
20-24	20	17	3	473	429	44	0
25-34	23	20	3	530	472	57	1
35-44	31	25	6	531	447	84	0
45-54	37	31	6	536	439	97	0
55-64	20	17	3	298	265	32	1
65-74	4	4	0	66	64	2	0
75 & Older	1	1	0	14	12	2	0
Not Stated	0	0	0	53	45	6	2
<b>TOTAL</b>	<b>155</b>	<b>133</b>	<b>22</b>	<b>2,814</b>	<b>2,401</b>	<b>408</b>	<b>5</b>

Table 8 - 11

**MC Operator Errors**

Driver Violation or Behavior	All Crashes		Fatal Crashes		Injury Crashes		PDO Crashes	
	Number of Cases	Percent of Units	Number of Cases	Percent of Units	Number of Cases	Percent of Units	Number of Cases	Percent of Units
No Improper Driving	1,473	43.13%	48	30.57%	1,108	41.84%	317	51.97%
Speeding*	903	26.44%	54	34.39%	739	27.91%	110	18.03%
Exceeded Lawful Speed	48	1.41%	6	3.82%	39	1.47%	3	0.49%
Failed to Yield Right-Of-Way	104	3.05%	1	0.64%	75	2.83%	28	4.59%
Followed Too Closely	53	1.55%	2	1.27%	35	1.32%	16	2.62%
Ran Stop Sign	15	0.44%	3	1.91%	9	0.34%	3	0.49%
Disregarded Traffic Signal	21	0.61%	1	0.64%	16	0.60%	4	0.66%
Made Improper Turn	24	0.70%	0	0.00%	17	0.64%	7	1.15%
Drove in Opposing Lane	23	0.67%	4	2.55%	16	0.60%	3	0.49%
Operated with Faulty Equipment	11	0.32%	0	0.00%	11	0.42%	0	0.00%
Required Motorcycle Safety Equipment Not Used	27	0.79%	1	0.64%	22	0.83%	4	0.66%
Passed in No-Passing Zone	6	0.18%	0	0.00%	6	0.23%	0	0.00%
Unsafe Lane Change	38	1.11%	0	0.00%	31	1.17%	7	1.15%
Other Unsafe Passing	25	0.73%	3	1.91%	14	0.53%	8	1.31%
Inattention	204	5.97%	11	7.01%	158	5.97%	35	5.74%
Other	206	6.03%	5	3.18%	168	6.34%	33	5.41%
Unknown	234	6.85%	18	11.46%	184	6.95%	32	5.25%
<b>TOTAL</b>	<b>3,415</b>	<b>100%</b>	<b>157</b>	<b>100%</b>	<b>2,648</b>	<b>100%</b>	<b>610</b>	<b>100%</b>

\*Driving too fast for conditions

## Section 8: - Motorcycle (MC) Crashes

Chart 8 - 5

All MC Crashes vs. Fatal MC Crashes by Time of Day - Weekdays

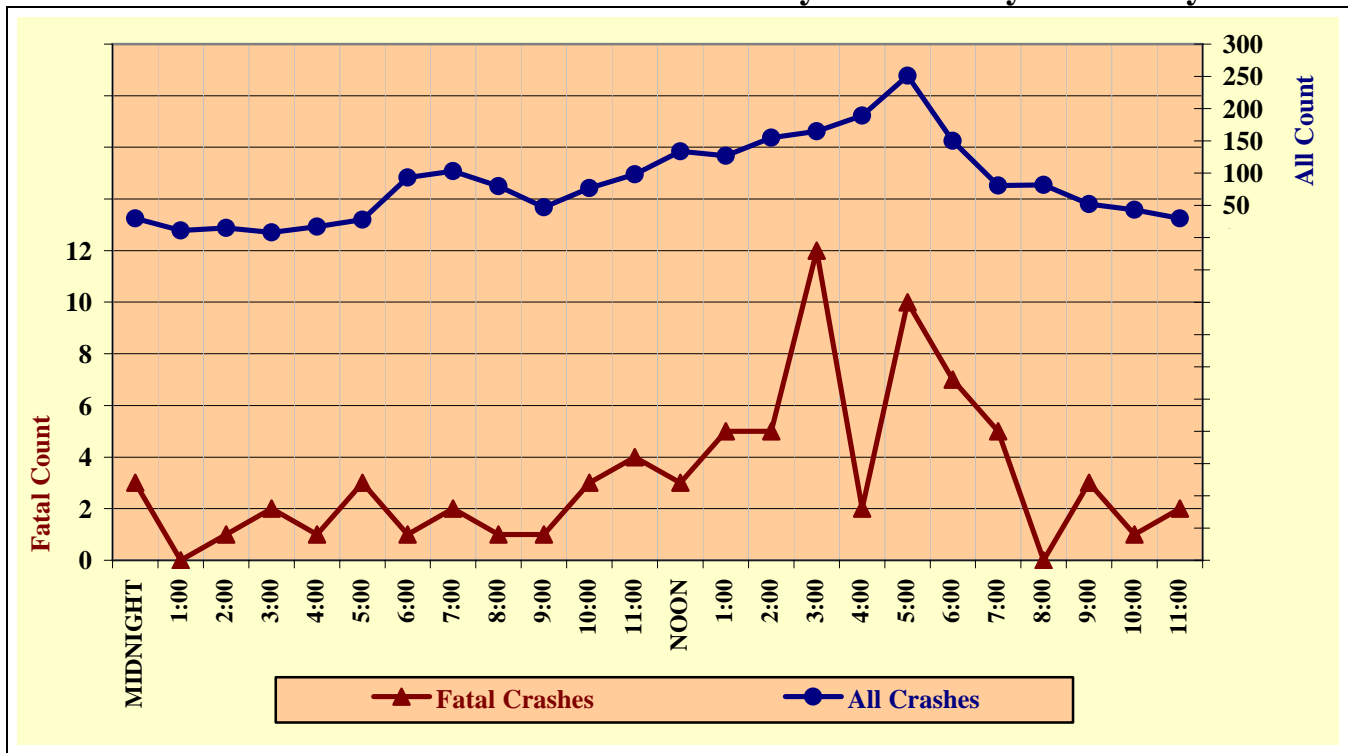


Chart 8 - 6

All MC Crashes vs. Fatal MC Crashes by Time of Day - Weekends

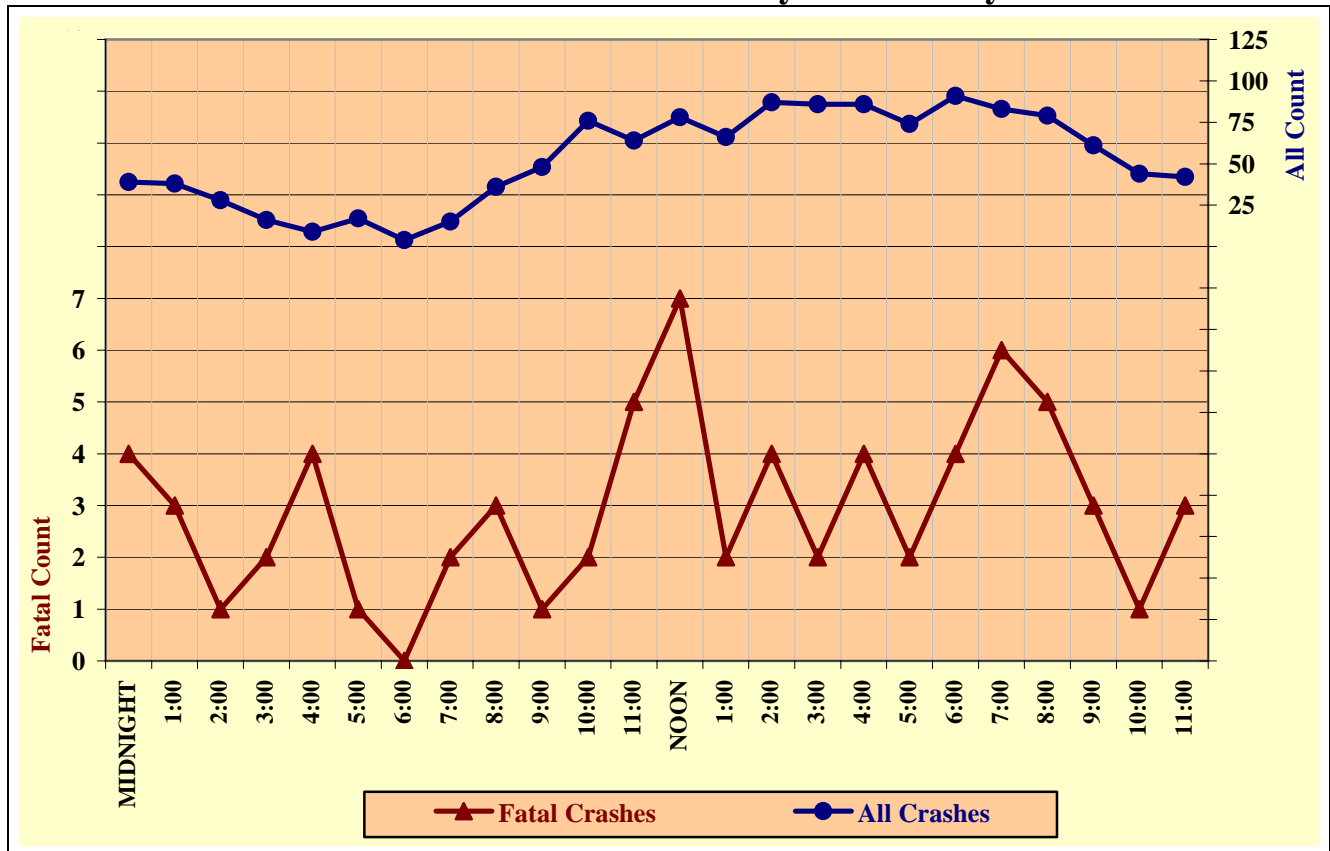


Chart 8 - 7

All MC Crashes vs. Fatal MC Crashes by Day of Week

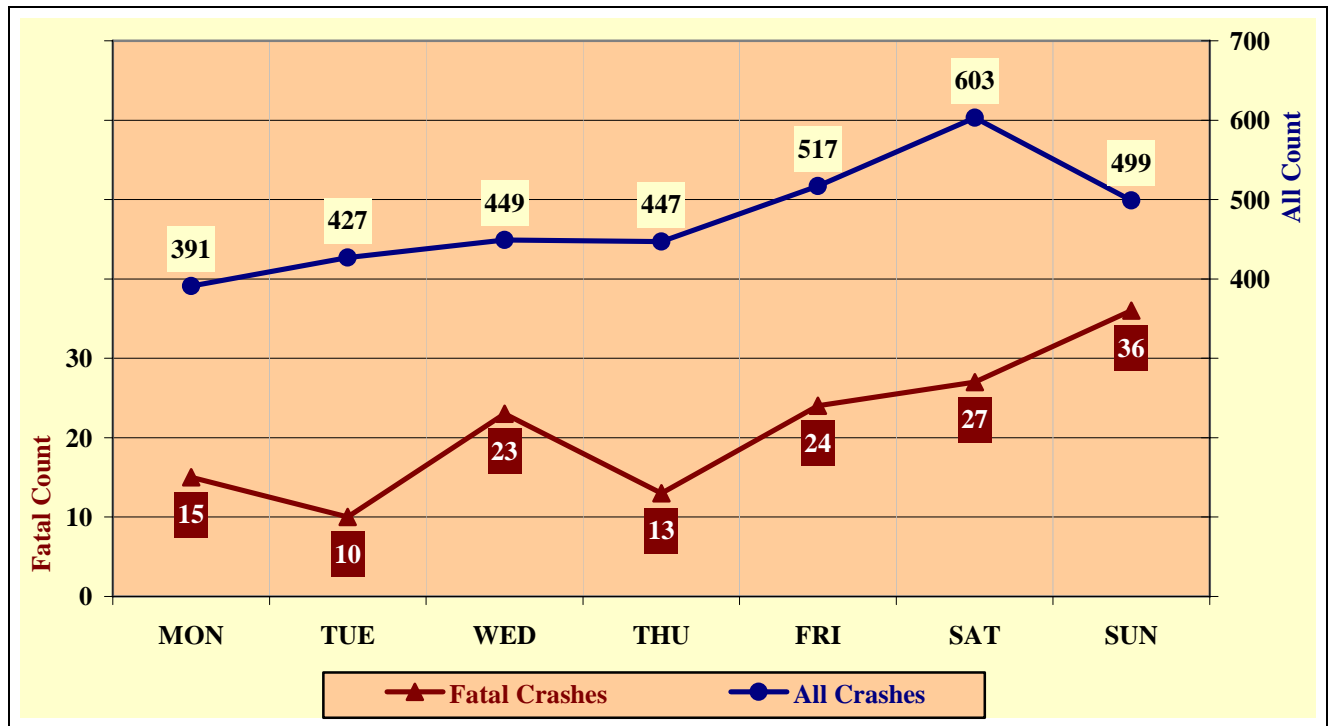
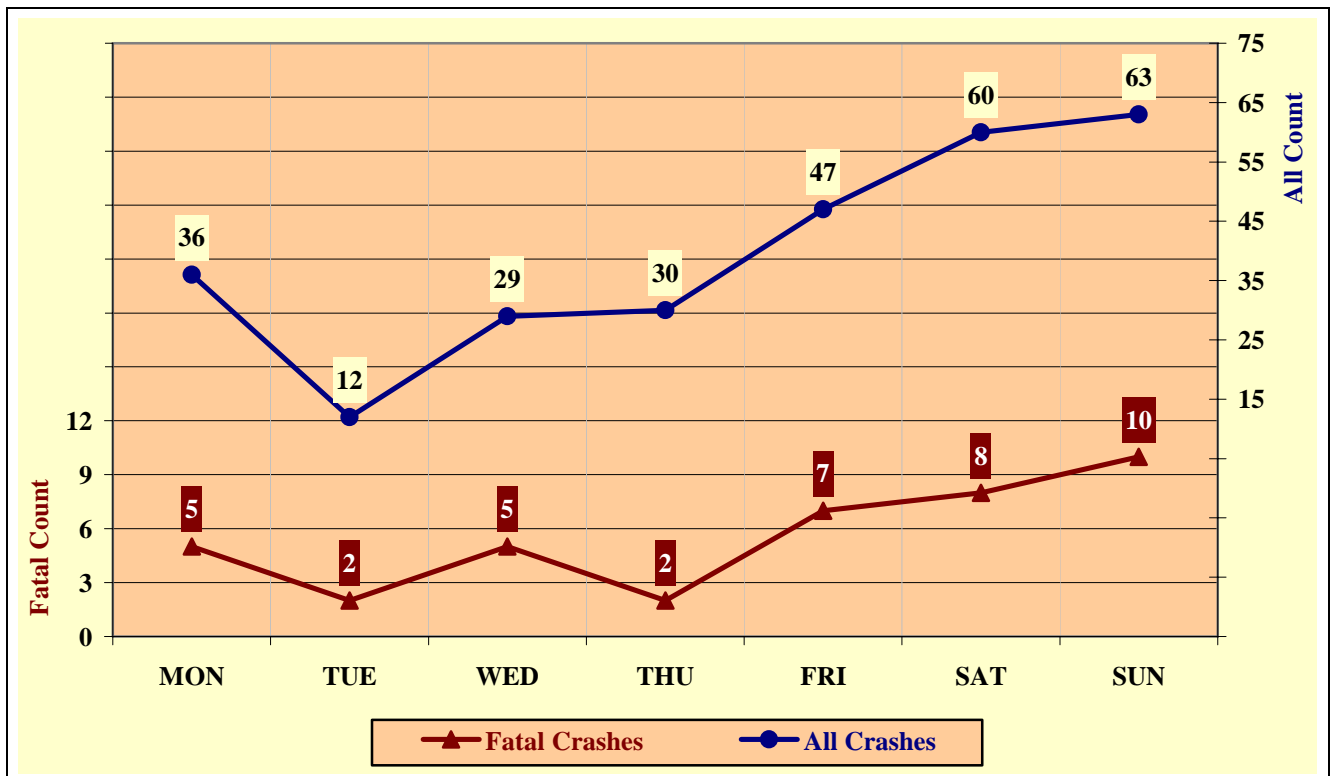


Chart 8 - 8

Alcohol Related MC Crashes vs. Fatal Alcohol Related MC Crashes by Day of Week



---

## Acknowledgements

Special gratitude to our other providers of data and information including:

*The National Center for Statistics and Analysis, Research and Development*

*National Highway Transportation Safety Administration*

*The Arizona State Data Center, Arizona Department of Economic Security*

*The Office of Planning, Evaluation, and Public Health Statistics, Arizona  
Department of Health Services*

*The Information Technology Group, Arizona Department of Transportation*

*The National Safety Council*