

# MGT Docking Station

## Version II

### User's Manual



## Table of Contents

|   |        |
|---|--------|
| Warning .....                                     | 3      |
| 1. Overview .....                                 | 4      |
| 1.1 Description .....                             | 4      |
| 1.2 Instructions and Parts .....                  | 4      |
| 1.3 Key Features .....                            | 5      |
| 1.4 Specification .....                           | 5      |
| 2. Set up and Operation .....                     | 6      |
| 2.1 Power turn on/off .....                       | 6      |
| 2.2 Bay LEDs and meanings .....                   | 6      |
| 2.3 Charging battery .....                        | 6      |
| 2.4 Exhaust Port & Fresh air Inlet .....          | 7      |
| 2.5 Installation of Gas Cylinder .....            | 7      |
| 3. Testing .....                                  | 7      |
| 3.1 Calibration .....                             | 7      |
| 3.2 Bump Test .....                               | 8      |
| 4. Trouble Shooting .....                         | 8      |
| 5. Docking Station II Manager Software .....      | 9      |
| 5.1 Software Installation .....                   | 9      |
| 6. Connecting to the MGT Docking Station II ..... | 11     |
| 6.1 Connecting with SENKO IR Link .....           | 12     |
| 6.2 Connecting with USB .....                     | 12     |
| 7. Using Software .....                           | 13     |
| 7.1 Overview of Software .....                    | 13, 14 |
| 7.1.1 Docking Station Tab .....                   | 15     |
| 7.1.2 MGT Tab .....                               | 16     |
| 7.1.3 Logs Tab .....                              | 17     |
| 7.1.4 Certification Tab .....                     | 18     |
| Limited Warranty .....                            |        |

## **WARNING**

- ⚠ Any unauthorized attempt to repair or modify the product, or any other cause of damage beyond the range of the intended use including damage by fire, lightning, or other hazard, voids liability of the manufacturer.
- ⚠ Do not use if the device appears to be damaged.
- ⚠ Use the device in a clean environment, which has no hazardous gases.
- ⚠ Do not use the expired gas cylinders.
- ⚠ Ensure to use the certified gas cylinders.
- ⚠ Ensure that the gas types and the concentrations match with manuals and devices.
- ⚠ Severe vibration or shock to the device may cause a sudden reading change and cause the device malfunction.
- ⚠ Do not leave or use the device at the watery place or at where there is any liquid.
- ⚠ Do not use a device which has been failed the test.

### **Read the operation manual before use**

- ✓ Before operation, read the manual carefully and follow all the instructions.
- ✓ IR link communication works only when it is placed at the bay 1 on the docking station.
- ✓ The device only operates when the power LED turns to green.
- ✓ Before upgrading firmware, connect the plug to avoid any data loss and malfunction by unexpected power off. And the file names are fixed as below.
  - Docking F/W File Name : DK\_FW.bin,
  - MGT F/W Name : MGT\_FW.bin

# 1. Overview

## 1.1 Description

A Bump test and the calibration are the key features to ensure the safety of devices and users. MGT docking station version II provides bump testing, event management and calibration from a simple to use multi-unit station and gives fleet or safety managers the ability to update configurations on large fleets. It also maintains all the important event logs that demonstrate users are working within company requirements.

## 1.2 Instructions and Parts

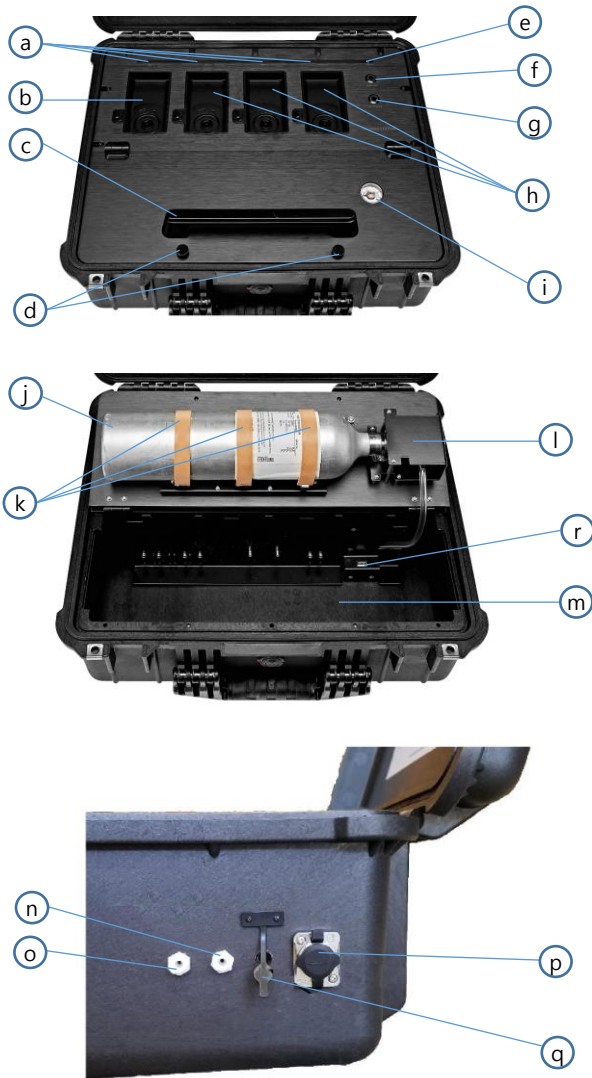


Figure 1

| No | Description          |
|----|----------------------|
| a  | Bay LEDs             |
| b  | Bay 1                |
| c  | Handle               |
| d  | Thumbscrews          |
| e  | Power LED            |
| f  | Bump Test button     |
| g  | Calibration button   |
| h  | Bay 2, 3, 4          |
| i  | Pressure gauge       |
| j  | Cylinder 58L/116L    |
| k  | Cylinder Straps      |
| l  | Gas regulator        |
| m  | Cylinder compartment |
| n  | Exhaust port         |
| o  | Fresh air Inlet      |
| p  | LAN port             |
| q  | Charging port        |
| r  | USB port             |

### 1.3 Key Features

- ✓ Zero and Span Calibration, Bump Test Function
- ✓ Rechargeable internal battery lasts up to 1000 bump tests on a single charge
- ✓ Indicate the current status of operation by the Power LED and Unit LED color
- ✓ Configure settings and automatic update firmware of up to four MGT devices
- ✓ Gas Ventilation system to remove a remained gas
- ✓ Computer not required for normal operation
- ✓ Save the log events after calibration and bump test
- ✓ Enable users to adjust the setting points of Docking station and MGT via IR Link or USB

### 1.4 Specifications

|                                      |   |
|--------------------------------------|---|
| <b>Size</b>                          | <b>52.5 x 43.7 x 21.3cm (20.66" x 17.20" x 8.40")</b>                                     |
| <b>Weight<br/>(Without cylinder)</b> | 11.0kg  |
| <b>Temperature</b>                   | 41 to +104°F (5 to +40°C)   |
| <b>Warranty</b>                      | Full 2 years  |
| <b>Battery Type</b>                  | Rechargeable Lithium Ion  |
| <b>Battery Life</b>                  | Up to 1,000 Bump Tests  |
| <b>LEDs</b>                          | 6 Blue LEDs for each bay, 3-color LED for power,<br>Switch Back Light LED (Orange, Green) |
| <b>Memory</b>                        | USB 8GB Standard  |
| <b>Log Capacity</b>                  | Approximately Up to 5 million tests (8GB, removable USB memory)                           |
| <b>Tests Performed</b>               | Bump Test and Calibration   |
| <b>Information Stored</b>            | Bump/Calibration Logs, Individual Monitor Event Logs, Firmware and Unit Configurations    |
| <b>Gases Available</b>               | LEL (CH <sub>4</sub> ), CO, H <sub>2</sub> S and O <sub>2</sub>                           |
| <b>Compatibility</b>                 | Works with SP-MGT(N, P)   |
| <b>Calibration Gas</b>               | Compatible with 58L & 116L cylinders  |
| <b>Interface</b>                     | Ethernet RJ-45(TCP/IP), 10Mb/s  |
| <b>Charging Adaptor</b>              | DC12.0V, 3A/h   |

## 2. Set up and Operation

### 2.1 Power turn on/off

The MGT Docking Station version II operates using only 2 (two) buttons for calibration and Bump Test.

To turn on the power, follow the below:

- ✓ Press and hold either Calibration or Bump Test button for 2 seconds.
- ✓ The Power LED turns on to orange and blinks during the warming up and after while turns to green when it is ready. When the unit has a low battery, the LED turns to red.

To turn off the power, follow the below:

- ✓ Press and hold both Calibration or Bump Test buttons simultaneously for 2 seconds.

**Note:** If unit is inactive for 300 seconds, it will automatically off (save power mode)  
The button/unit only works when the power LED turns to green

### 2.2 Bay LEDs and meanings










|                  | Description   |
|------------------|---|
| <b>Bay LED</b>   |  Stand by                |
|                  |  Injecting fresh air     |
|                  |  Testing                |
|                  |  Purging remaining gas |
|                  |  Save a log data       |
|                  |  Test Passed           |
|                  |  Test Failed           |
| <b>Power LED</b> |  Green: Power On       |
|                  |  Red: Low Battery      |

Figure 2

Each Bay has six blue LEDs (see Figure 1) which indicates the process status. Each of them will turn on by order from left to right while testing. After testing is finished, make sure all six bays are turned on otherwise, 3<sup>rd</sup> bay LED will be shown if test is failed.

### 2.3 Charging battery

The unit's Power LED turns to red when the battery is very low as shown above. However, it comes with a DC adapter with 5plugs which can be used to charge the unit using a 110V power supply. A full charge will take approximately 3 hours and will last for approximately 1000 bump tests.

**Note:** Refer to Figure 1 for charging location.

## 2.4 Exhaust Port & Fresh Air Inlet

There are two small ports on the left side of the charging port (see Figure 1). The Fresh air inlet port will draw clean air in during an active test. The incoming air automatically counts as a fresh air (O<sub>2</sub>, 20.9%vol).

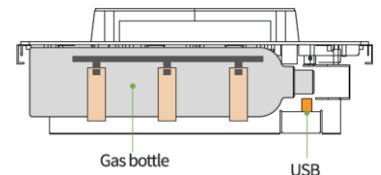
The Exhaust port is the inverse of the Fresh air inlet port. During an active test, the used test gas will exit the unit through the exhaust port. Optionally, tubing can be attached to the exhaust port using the included twist connector to direct the used test gas to a suitable location.

## 2.5 Installation of Gas Cylinder

Gas Cylinder which fits to Docking Station II must have the C10 fitting on it. The size of 58L and 116L are both suitable in cylinder compartment. Before installing the cylinder for testing MGT, ensure that Calibration concentration of gases are as same as MGT.

To install a cylinder, follow the below:

- ✓ Remove thumbscrews and lift the handle up.
- ✓ Install the cylinder to the gas regulator.
- ✓ Fasten the cylinder straps and close the cylinder compartment.
- ✓ Check the pressure gauge on the front panel.
- ✓ Re-install thumbscrews.
- ✓ After installing a gas cylinder, ensure USB is attached.



## 3. Testing

Bump test and calibration are the key features to ensure the safety of devices and users. The MGT Docking Station version II provides bump testing, event management and calibration from a simple to use multi-unit station.

### 3.1 Calibration

Calibration is the comparison of measurement values delivered by a device under test with those of a calibration standard of known accuracy. It is very important to calibrate a device periodically for better performance of the device and sensor accuracy, especially, when it is safety equipment.

To perform a calibration, follow the below:

- ✓ Insert the monitor(s) into the bay facing down.
- ✓ Slightly press down on the monitor until it locks into place.
- ✓ Press the calibration button for 2 seconds to execute Calibration test.
- ✓ During the 90seconds, bay LEDs begin to light as the test progress.
- ✓ When test is finished, all (six) blue Bay LEDs illumination indicates if the MGT has passed the test (see Figure 3).
- ✓ Otherwise, the third blue Bay LED illumination indicates if the MGT has failed the test (see Figure 3).



Figure 3

**Note:** Do not use the monitors that failed the calibration test.  
To remove the MGT monitors from the bay, pull to the left side bay locking mechanism (lower-left side of each bay).

### 3.2 Bump Test

Bump test is the process which checks and verifies the performance of the monitors and ensures that sensors are correctly responding to the target gas.

To perform a Bump Test, follow the below:

- ✓ Insert the monitor(s) into the bay facing down.
- ✓ Slightly press down on the monitor until it locks into place.
- ✓ Press the Bump Test button for 2 seconds to execute Bump test.
- ✓ During the 20~30seconds, bay LEDs begin to light as the test progress.
- ✓ When test is finished, all (six) blue Bay LEDs illumination indicates if the MGT has passed the test (see Figure 3).
- ✓ Otherwise, the third blue Bay LED illumination indicates if the MGT has failed the test (see Figure 3).

## 4. Trouble Shooting

### 4.1 Bay Light does not turn on /test not performed

- ✓ Clean Monitor IR window.
- ✓ IR interference (bright lights/sunlight).
- ✓ Monitor in gas alarm state.

### 4.2 All tests fail

- ✓ Gas cylinder empty – check pressure gauge if it indicates at least 100psi/10bar.
- ✓ Gas Expired – check gas expiration date located on the cylinder.
- ✓ Wrong gas concentration(s) – gas cylinder and MGT concentrations not same.
- ✓ Wrong gas type – check gas type.



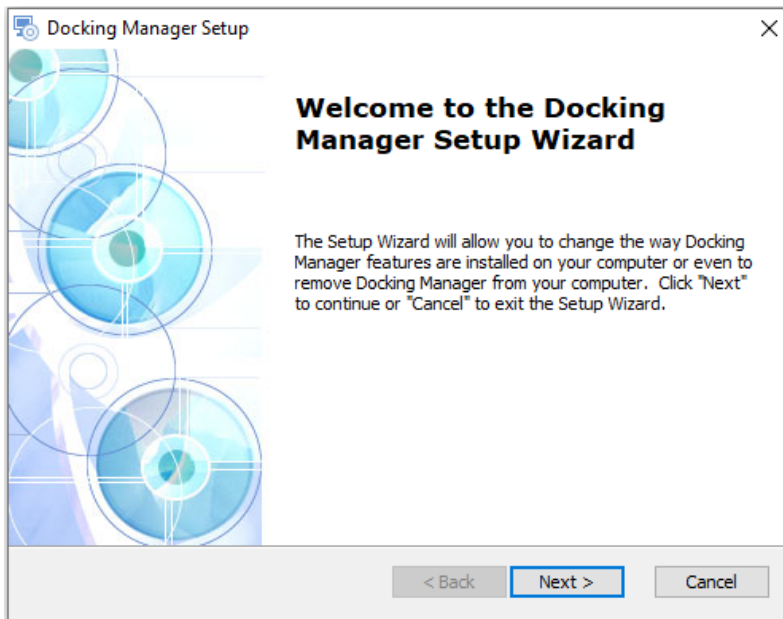
- 4.3 Test results are not stored
  - ✓ USB not attached or full storage.
- 4.4 Uploaded Settings are not saved
  - ✓ "Write" button has not clicked.
  - ✓ Connection has lost.

## 5. MGT Docking Station II Manager Software

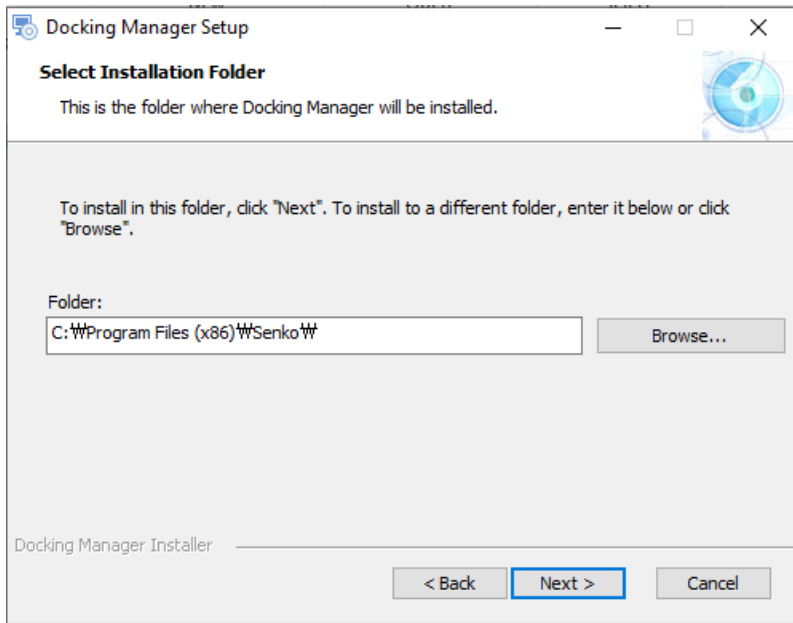
The purpose of MGT Docking Station II Manager Software is to customize and configure the Station's settings and MGT devices' internal configurations. The software can adjust and make changes to the Docking Station and the MGT units using SENKO IR Link and/or partly USB Disk.

### 5.1 Software Installation

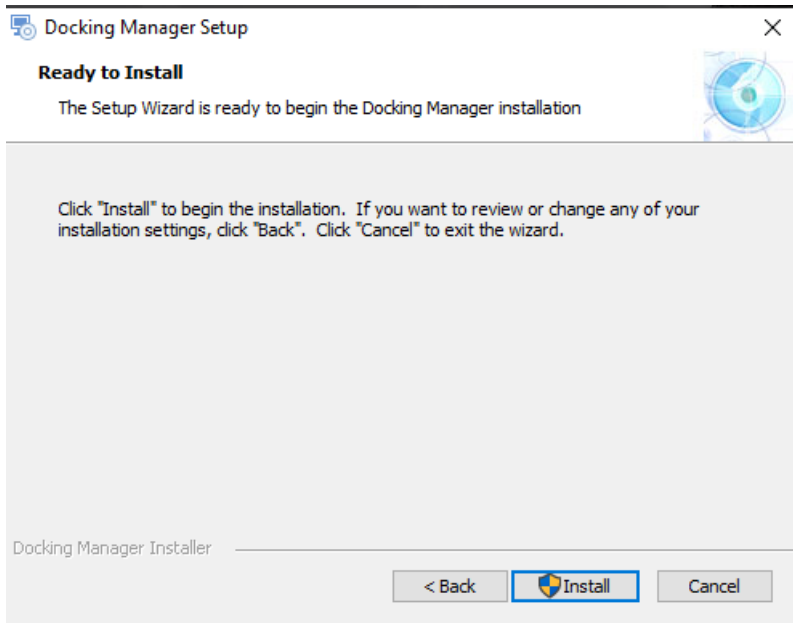
- ✓ After downloading the file, navigate to the saved location.
- ✓ Double click for running an installer.
- ✓ Click "Read More" and "Run Away" if you receive a warning message.
- ✓ The Docking Manager Setup window will open. Click "Next".



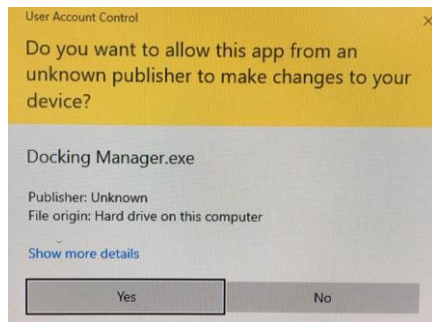
- ✓ The "Select Installation Folder" comes up.
- ✓ To install to a different folder, click "Browse" or enter the link.
- ✓ To install in default folder, click "Next"



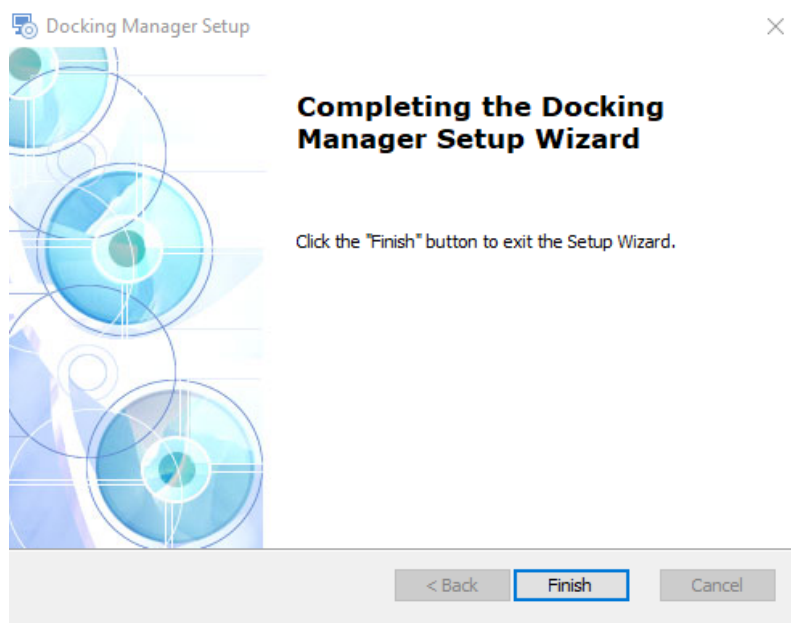
- ✓ The Installation will be ready to begin.
- ✓ Click "Install".



- ✓ Click "Yes" if you get warning message.



- ✓ The Docking Station Setup Wizard is complete.
- ✓ Click the "Finish" button to exit the Setup Wizard.



## 6. Connecting to the MGT Docking Station II

When the Docking Manager software opened, the fields are grayed out and before it can be used, the IR Link must be connected to the Docking Station II. There are 2 ways of connection to the Docking Station II: IR Link and USB Disk.

**Note:** The IR Link connection works only when it is placed into the Bay 1. USB drive must be installed to store the test results. Do not open the software if IR Link is not plugged to PC.

## 6.1 Connecting with SENKO IR Link

SENKO IR Link is a device which conveniently configures and communicates with MGT Docking Station II using the IR communication in Bay Unit 1.

To connect the IR Link, follow the below:

- ✓ Plug the IR link into a USB port on PC.
- ✓ Power on (green LED) the Docking Station II.
- ✓ Place the IR Link facing up into the Bay Unit 1 (see Figure 4).
- ✓ Double click and open the installed software.
- ✓ Click "OPEN" button at the top right corner of the software interface.
- ✓ The IR Link starts to flash rapidly.
- ✓ After few seconds, "Read complete" message will be displayed, and current settings of Docking Station II will be showed on the interface.

**Note:** If "Send timeOut" message displays, the IR Link has failed to communicate with Docking Station II. In this case, make sure IR Link screen is aimed at IR screen of Bay Unit 1 and check Power of Docking Station II is on.



Figure 4

## 6.2 Connecting with USB

To connect the IR Link, follow the below:

- ✓ Open the Cylinder compartment.
- ✓ Find the USB port (see Figure 1) and remove the USB Disk.
- ✓ Plug the USB into to PC.
- ✓ Double click and open the installed software.
- ✓ Select the "USB Disk" in the upper middle-left corner.
- ✓ Select the location of USB Disk and click "OK" button.

# 7. Using Software

## 7.1 Overview of Software

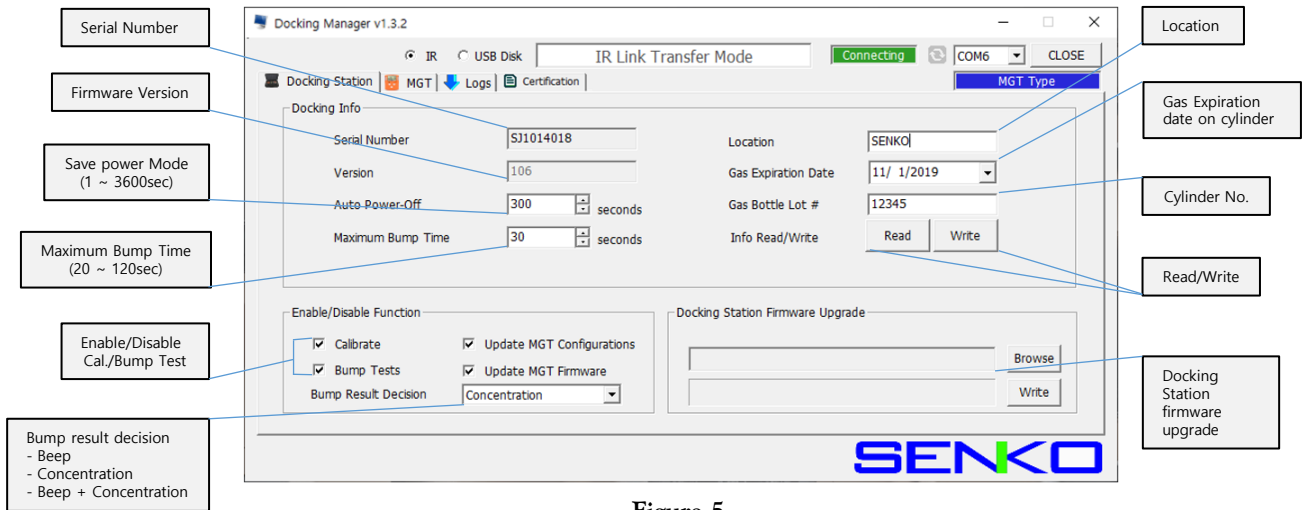


Figure 5

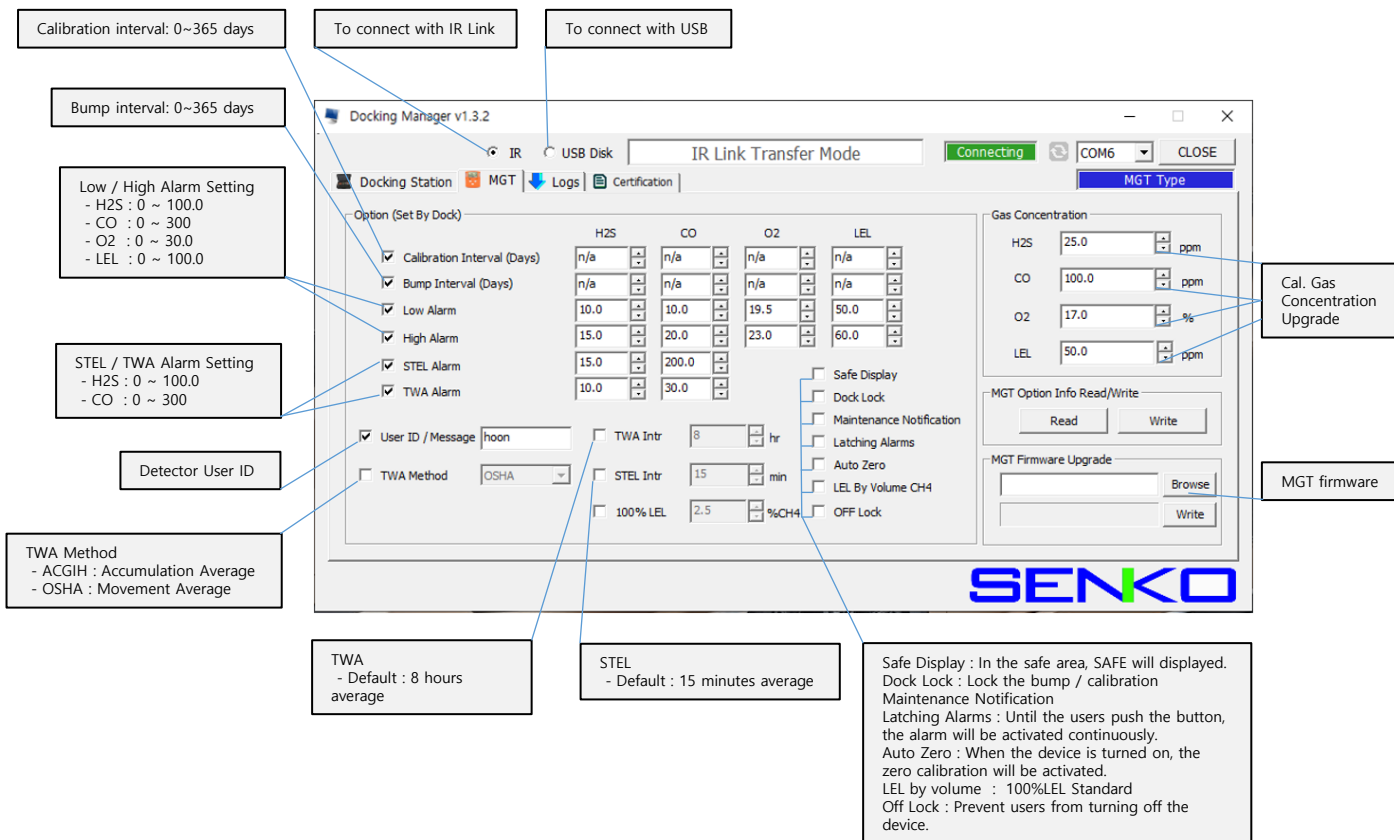


Figure 6

# 7. Using Software

## 7.1 Overview of Software

The screenshot shows the 'Docking Manager v1.3.2' application window. The title bar includes 'IR', 'USB Disk', and 'IR Link Transfer Mode'. The main window has a menu bar with 'Docking Station', 'MGT', 'Logs', and 'Certification'. Below the menu bar is a toolbar with 'Refresh', 'Load', and 'Senko Addr' dropdown. The 'Certification' menu is active, showing a list of certificate files: 'SK0204508.csv' and 'S06903279.csv'. The 'S06903279.csv' file is selected. The main display area shows a 'Calibration Certificate' for 'MGT' with serial number 'N2222'. The certificate details include: Product Name: MGT, Serial Number: N2222, GAS Lot#: 0, and Result: Fail. A table shows calibration data for O2, CO, H2S, and LEL. The calibration date is 2021-02-25. The interface also includes fields for 'Calibrated by' and 'Approved by', both set to '1', and a 'Print' button. The 'SENKO' logo is visible at the bottom right.

|                           | O2(%) | CO(ppm) | H2S(ppm) | LEL(%) |
|---------------------------|-------|---------|----------|--------|
| Calibration Concentration | 17.0  | 100     | 25.0     | 50     |
| Reading                   | 20.9  | 0       | 0.0      | 0      |
| Low Alarm                 | 19.0  | 30      | 10.0     | 10     |
| High Alarm                | 23.0  | 60      | 20.0     | 30     |
| STEL Alarm                |       | 200     | 15.0     |        |
| TWA Alarm                 |       | 30      | 10.0     |        |

Callout boxes in the image point to the following elements:

- Refresh
- Click serial number
- Load the data
- Select the address
- Calibrated by
- Approved by
- Print
- All the information will be shown automatically

Figure 7

When IR Link is connected to the Docking Station II, the Figure 5 will be displayed. But if it is connected using USB Disk, the "Logs" tab will not indicate.

### 7.1.1 Docking Station Tab

- ✓ **Serial Number** – Serial number of Docking Station II (cannot be changed).
- ✓ **Version** – The current firmware version.
- ✓ **Auto Power-Off** – The time when unit automatically goes to Save Power Mode. Min/max time can be set 1 ~ 3,600 seconds.
- ✓ **Maximum Bump Time** – The maximum and minimum time spending for Bump Test process. If unit cannot respond correctly before time expires, the process will stop and result will be fail. Can be adjust min/max of 20 ~ 120 seconds.
- ✓ **Location** – The location where test has done. It is beneficial when downloading the data logs. Can add 12alphanumeric character.
- ✓ **Gas Expiration Date** – Informs the date of expiration of gas in installed cylinder. Must be updated after installing a new one.
- ✓ **Gas Bottle Lot #** - Displays lot number of installed cylinder. Must be updated after installing a new cylinder.
- ✓ **Info Read/Write** – By pressing the "Read" it displays current setting of the Docking Station II and will discard any unsaved changes in the Tab.
- ✓ **Calibrate** – If the box is not selected, calibration process will not proceed by pressing Calibration button. However, it will still update firmware and configuration of MGT.
- ✓ **Bump Test** - If the box is not selected, Bump test process will not proceed by pressing Bump Test button. However, it will still update firmware and configuration of MGT.
- ✓ **Bump Result Decision** - The dropdown list is selectable for "Beep", "Concentration", or "Beep + Concentration". The "Beep" option will run the bump test until the alarm condition is met and the audible alarm is detected. The "Concentration" option will run the bump test until the test gas concentration is verified. If the units are in Stealth Mode, the Concentration option will be required for a successful bump test. The "Beep + Concentration" option will run the bump test until the audible alarm is detected and the test gas concentration is verified.
- ✓ **Browse & Write** – To upgrade the latest firmware of Docking Station II, click "Browse", navigate to the firmware location and click "Open". Click "Write" to begin upgrading process.

**Note:** Without clicking the "Write" button, configured and customized settings will not be applied and neither be saved.

### 7.1.2 MGT Tab

- ✓ **Calibration Interval (Days)** – The calibration reminder informs every fixed day (can adjust 0 (n/a) ~ 365).
- ✓ **Bump Interval (Days)** – The Bump test reminder informs every fixed day (can adjust 0 (n/a) ~ 365).
- ✓ **Low Alarm & High Alarm** – The 1<sup>st</sup> and 2<sup>nd</sup> alarm set points for each gas.
- ✓ **STEL Alarm & TWA Alarm** – Short Term Exposure Limit and Time Weighted Average level of concentration of each gas.
- ✓ **User ID** - The User ID can be used to add a usage message.
- ✓ **TWA Method** – Calculates TWA by either OSHA or ACGIH.
- ✓ **TWA Intr** – Determines a period for calculating TWA (default 8 hours).
- ✓ **STEL Intr** - Determines a period for calculating STEL (default 15 minutes).
- ✓ **100% LEL** – The reading percentage of CH<sub>4</sub> (can adjust 1% ~ 50%).
- ✓ **Safe Display** – “SAFE ZONE” will be displayed on MGT unless if gas value exceed 1<sup>st</sup> & 2<sup>nd</sup> alarm set points.
- ✓ **Dock Lock** – Calibration cannot be performed without using IR Link or Docking Station II.
- ✓ **Maintenance Notification** – When Calibration and Bump Test due date come, LED will flash.
- ✓ **Latching Alarms** – If selected and alarm occurs, alarm will not stop until resetting the unit (push button). If not selected and alarm occurs, alarm will stop once present gas concentration goes below the alarm set points.
- ✓ **Auto Zero** – The device automatically performs Zero calibration each time whenever turning on the MGT. If this option is selected, MGT must turned on at the Safe Zone where, there is no gas.
- ✓ **LEL by Volume CH<sub>4</sub>** – Adjust the maximum range of %LEL by %vol based on 100%LEL.
- ✓ **OFF Lock** – Off Lock does not allow a user to turn off the device and keeps to operate normally. By selecting the box and pushing MGT button for 3 seconds, “OFF LOCK” message will display for 1 second and turns to “measuring mode”.
- ✓ **Gas Concentration** – This allows a user to enter/amend correct concentration of the installed gas cylinder on Docking Station II. It is necessary to adjust for all tests.
- ✓ **MGT Option Info Read/Write** – By pressing the “Read” it displays current setting of the MGT and will discard any unsaved changes in the Tab. By clicking the “Write”, all configured and customized settings will be saved.
- ✓ **Browse & Write** – To upgrade the latest firmware of MGT, click “Browse”, navigate to the firmware location and click “Open”. Click “Write” to begin upgrading process.



### 7.1.3 Logs Tab

All logs will be stored on the USB Disk (logs are not available if USB is not plugged) and can be downloaded via SENKO IR Link using Docking Manager software. The log files will be created for each device by their Serial numbers and will be in ".csv" format.

**Note:** USB drive must be installed to store the test results (logs).  
By connecting USB Disk, "Logs" Tab is not available on software interface. But logs are still available to download from "Events" file in USB Disk.  
Click "Refresh" button to view and download the latest logs.

After clicking "Refresh" button, all logs will be available to view (see Figure 8).

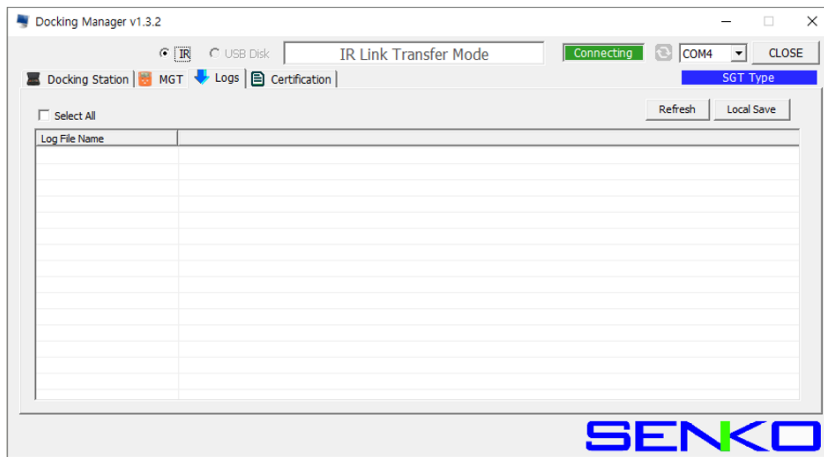


Figure 8

To download the logs, follow the below:

- ✓ Plug the IR Link into a USB port on PC and place into Bay Unit 1.
- ✓ Double click and open the installed software.
- ✓ Click "OPEN" button at the top right corner of the software interface.
- ✓ Click "Logs" Tab and Click "Refresh" button.
- ✓ Select needed log by indicating MGT's serial number.
- ✓ Click "Local Save" button and a Browse window will open.
- ✓ Select a location to save a file.
- ✓ Click "OK" button to begin the downloading process.
- ✓ When downloading is finished, "Log data save success" message will come up.

### 7.1.4 Certification Tab

Calibration certificate can be issued based on the latest calibration data. Latest calibration data will be stored on the USB Disk and can be printed using Docking Manager software. The certi file name will be created for each device by their Serial numbers and will be in ".csv" format.

**Note:** USB drive must be installed to store the test results.  
By connecting USB Disk, "Certification" Tab is not available on software interface.  
Click "Refresh" button to view and print the calibration certificate.(only can print latest calibration data)

After clicking "Refresh" button, all data will be available to view (see Figure 9).

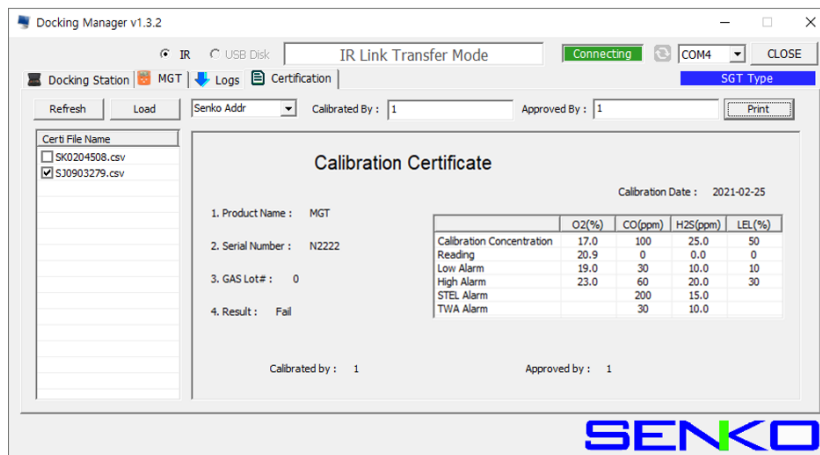


Figure 9

To print latest calibration certificate, follow the below:

- ✓ Plug the IR Link into a USB port on PC and place into Bay Unit 1.
- ✓ Double click and open the installed software.
- ✓ Click "OPEN" button at the top right corner of the software interface.
- ✓ Click "Certification" Tab and Click "Refresh" button.
- ✓ Select needed device by indicating devices serial number in Certi File Name section.
- ✓ Click "Load" button and information will be shown automatically in the right side.
- ✓ Select address section between Senko, Senko Canada, Senko EU, No address.
- ✓ Write the authorized person's name in the "Calibrated by" & "Approved by"
- ✓ Click "Print" button to print the calibration certificate.
- ✓ When printing is finished, "success" message will come up.

## Limited Warranty

SENKO warrants this product to be free of defects in workmanship and materials-under normal use and service for two years from the date of purchase from the manufacturer or from the product's authorized reseller.

The manufacturer is not liable (under this warranty) if its testing and examination disclose that the alleged defect in the product does not exist or was caused by the purchaser's (or any third party's) misuse, neglect, or improper installation, testing, or calibrations. Any unauthorized attempt to repair or modify the product, or any other cause of damage beyond the range of the intended use, including damage by fire, lightning, water damage or other hazard, voids liability of the manufacturer.

In the event that a product should fail to perform up to manufacturer specifications during the applicable warranty period, please contact the product's authorized reseller or SENKO service center at 82-31-492-0445 to repair/return information.



### **[SENKO Canada Ltd.](#)**

**Address:** Calgary, Alberta, Canada

**Tel:** 587-322-1616

**Email:** [ben@senkocanada.com](mailto:ben@senkocanada.com)

**Web:** [www.senkocanada.com](http://www.senkocanada.com)



73, Oesammi-ro 15 beon-gil, Osan-si, Gyeonggi-do, 18111, South Korea

Tel : 82-31-492-0445

Email : [sales@senko.co.kr](mailto:sales@senko.co.kr)

Fax : 82-31-492-0446

Web : [www.senko.co.kr](http://www.senko.co.kr)