



Installation Instructions



MOVITOOLS® MotionStudio Installation and Configuration



Contents

1 General information..... 4

1.1 About this documentation 4

1.2 Content of the documentation..... 4

1.3 Right to claim under warranty 4

1.4 Product names and trademarks..... 4

1.5 Copyright notice 4

2 Safety notes 5

2.1 Preliminary information 5

2.2 Target group 5

2.3 Designated use 5

2.4 Bus systems..... 5

3 Introduction..... 6

4 Installation..... 7

4.1 Prior to the installation of the software..... 7

4.1.1 Hardware requirements..... 7

4.1.2 Requirements on the operating system 8

4.2 Installation packages 9

4.2.1 MOVITOOLS® MotionStudio Vx.xx Complete 9

4.2.2 MOVITOOLS® MotionStudio Vx.xx Compact 9

4.3 How to install the software 10

4.4 How to uninstall the software 12

4.5 Firewall settings 13

5 Requirements for the operation 14

5.1 Font size settings for display texts with Windows® 14

5.2 Registry keys to be enabled..... 15

5.3 Folders and applications to be enabled 16

6 Operation with user account control..... 17

6.1 Activating and changing the user account control 17

6.2 Consequences for the operation of MOVITOOLS® MotionStudio 18

6.3 Activating MOVITOOLS® MotionStudio with activated user account control 18

6.3.1 Start with administrator rights..... 18

6.3.2 Adjusting the MOVITOOLS® MotionStudio shortcut..... 18

6.3.3 Behavior after the start..... 19

6.3.4 Inhibiting the message window of Windows® 20

24834548/EN – 03/2018

1 General information

1.1 About this documentation

The documentation is part of the product and contains important information. The documentation is for everyone who works with this product.

The documentation must be accessible and legible. Make sure that persons responsible for the system and its operation as well as persons who work independently with the software and the connected units of SEW-EURODRIVE have read through the manual carefully and understood it. If you are unclear about any of the information in this documentation or if you require further information, please contact SEW-EURODRIVE.

1.2 Content of the documentation

The descriptions in this documentation apply to the current software/firmware at the time of printing. When new versions of software/firmware are installed, the descriptions may differ. In this case, contact SEW-EURODRIVE.

1.3 Right to claim under warranty

A requirement of fault-free operation and fulfillment of any rights to claim under limited warranty is that you adhere to the information in the documentation at hand. Therefore, read the documentation before you start working with the software and the connected devices from SEW-EURODRIVE.

Make sure that the documentation is available to persons responsible for the machinery and its operation as well as to persons who work independently on the devices. You must also ensure that the documentation is legible.

1.4 Product names and trademarks

The brands and product names in this documentation are trademarks or registered trademarks of their respective titleholders.

1.5 Copyright notice

© 2018 SEW-EURODRIVE. All rights reserved. Unauthorized reproduction, modification, distribution or any other use of the whole or any part of this documentation is strictly prohibited.

2 Safety notes

2.1 Preliminary information

The following general safety notes have the purpose to avoid injury and damage to property. They primarily apply to the use of products described in this documentation. If you use additional components also observe the relevant warning and safety notes.

2.2 Target group

Any work with the software may only be performed by a specialist with a suitable education. A specialist in this context is someone who has the following qualifications:

- Appropriate instruction
- Knowledge of this documentation and other applicable documentation.
- SEW-EURODRIVE recommends additional training for products that are operated using this software.

2.3 Designated use

MOVITOOLS® MotionStudio is a software package for engineering of the following SEW-EURODRIVE GmbH & Co KG units:

- Frequency inverters
- Drive inverters and
- Servo inverters

2.4 Bus systems

A bus system makes it possible to adapt electronic drive components to the particulars of the machinery within wide limits. There is a risk that a change of parameters that cannot be detected externally may result in unexpected (but not uncontrolled) system behavior and may have a negative impact on operational safety, system availability, or data security.

Especially in Ethernet-based networked systems and with engineering interfaces, make sure that unauthorized access is prevented.

Use IT-specific safety standards to increase access protection to the ports. For a port overview, refer to the respective technical data of the device in use.

3 Introduction

This document is intended for users of the MOVITOOLS® MotionStudio engineering software.

It helps the IT specialists on site to correctly install the software package and to adjust the existing Windows® infrastructure. Therefore, you will find instructions on how to administer user-specific authorization or how to influence the start behavior of MOVITOOLS® MotionStudio with activated user account control.

- Observe the notes and requirements specified in this documentation before installing and using MOVITOOLS® MotionStudio.

4 Installation

4.1 Prior to the installation of the software

Observe the following requirements before installing the MOVITOOLS® MotionStudio program package:

- You must have administrator rights for your PC.

Reason: During installation, registry keys and folders must be created on the hard drive.

- Observe the license agreement

You will find the license agreement in the installation package in the following directory:

```
.\SEW_Software_MotionStudio_Vx-x-x-x-[type]\Vx.x.x.x
[type]\Licence_xx.txt
```

4.1.1 Hardware requirements

- Observe the following hardware requirements:

Processor	1 GHz 32-bit processor (x86) or 64-bit processor
RAM	1 GB (recommended)
Hard disk	6 GB free memory space for full installation with MOVITOOLS®
Graphics card	SVGA graphics card
Resolution	The best display is achieved by selecting a resolution of 1024 x 768 or greater and a small font (see "Font size settings for display texts with Windows®" (→ 14)). NOTICE: Using large fonts or low monitor resolutions may result in the loss of display information.

4

Installation

Prior to the installation of the software

4.1.2 Requirements on the operating system

- Observe the following requirements on the operating system:

Operating system	<p>All programs of MOVITOOLS® MotionStudio are 32-bit applications.</p> <p>You need one of the following operating systems:</p> <ul style="list-style-type: none">• Windows XP/SP3 (32-bit version)• Windows VISTA (32-bit or 64-bit version)• Windows 7 (32-bit or 64-bit version)• Windows 8.1 (32-bit or 64-bit version) (HMI-Bilder.PRO cannot be executed.)• Windows 10 (32-bit or 64-bit version) (HMI-Bilder.PRO cannot be executed.)
Redistributables	<p>The following programs must be installed:</p> <ul style="list-style-type: none">• Microsoft Windows Installer 3.1 or higher• Microsoft .NET Framework 2.0• Microsoft .NET Compact Framework 2.0• Microsoft DirectX 9.0c

4.2 Installation packages

4.2.1 MOVITOOLS® MotionStudio Vx.xx Complete

Installation option	Component
Standard	<ul style="list-style-type: none"> • Microsoft Windows Installer 3.1 • Microsoft .NET Framework 2.0 • Microsoft DirectX • MOVITOOLS® MotionStudio • SEW Communication Server (SECOS) • MOVITOOLS® • Driver
Complete	<p>All standard components and the following additional control technology components:</p> <ul style="list-style-type: none"> • PLCEditor (IEC61131 programming system) • PLCEditor OPC server • HMI-Builder.PRO
User defined	All standard components can be selected or deselected as required.

4.2.2 MOVITOOLS® MotionStudio Vx.xx Compact

Installation option	Component
Standard	<ul style="list-style-type: none"> • Microsoft Windows Installer 3.1 • Microsoft .NET Framework 2.0 • Microsoft DirectX • MOVITOOLS® MotionStudio • SEW Communication Server (SECOS) • Driver
User defined	All standard components can be selected or deselected as required.

4.3 How to install the software

The software is installed using a wizard.

During the installation, several MSI packages and update packages will be installed on the computer. You can choose the location of the installation.

INFORMATION



You can use a software distribution system for the installation of the software.

- Use the command line parameters described e.g. to disable the display of query windows (silent mode).

Example of a command line:

SEWsetup.exe [-s|-k] [-lxxxx] [-p"target folder"] [-qn|-qr|-qb|-r] [-m] [-nf] [-ns] [-nr]

The following table shows the command line parameters:

Designation	Parameter	Parameter description	Remark
Installation type	-s	Standard installation: Installation of all components except control technology (PLC editor and OPCServer).	The default setting is "standard installation"
	-k	Complete installation: Installation of all components incl. control technology.	
Language	-lxxxx	This parameter does not only define the language of the setup wizard but also the language of the installed software. <ul style="list-style-type: none"> • I0009: English • I0007: German • I040c: French 	The default setting is the respective language setting of the target system or English if the setup wizard does not support this language.
Target folder	-p	Target folder where the software package will be installed. Example: -p„C:\Programme\SEW“	„<Programme>\SEW“ should be used preferably. This is the default setting.

Designation	Parameter	Parameter description	Remark
User interface level	-qn	Automatic installation without displayed windows. (Installation result see return code)	The default setting is "No automatic installation"
	-qr	Automatic installation with progress bar. (Installation result see return code)	
	-qb or -r	Automatic installation with progress bar. After the installation, the result is displayed with further options. Manual confirmation is required (by clicking the "Close" button).	
Report	-m	In the event of an error, a report is automatically sent via e-mail.	The default setting is "No report"
No firewall	-nf	The program is NOT automatically enabled in the firewall.	The default setting is "Automatic enable"
No shortcut	-ns	There will be no desktop shortcut for MOVITOOLS® MotionStudio.	The default setting is "Create desktop shortcut"
No reboot	-nr	The computer will not be rebooted automatically.	The default setting is "Restart automatically"

After the installation process, the following return codes are reported:

Return code	Description
0	Setup successful.
-1	Error A detailed log file is saved in the log folder. You find this folder in the target folder (example: C:\Programme\SEW\Logs).
-2	Setup successful, restart necessary.
-3	Setup successful, restart necessary, the installation will be continued after restart.

4.4 How to uninstall the software

The software is uninstalled using a wizard. All packages can be deleted.

INFORMATION



The software cannot be uninstalled in silent mode.

The user must always perform a task.

- Use the command line parameters described below to define the behavior during the uninstall process.

Example of a command line:

Uninstall.exe [-u] [lxxxx]

The following table shows the command line parameters:

Designation	Parameter	Parameter description	Comment
Uninstall type	-u	Complete uninstall	-
Language	-lxxxx	This parameter does not only define the language of the setup wizard but also the language used while the software uninstalled. <ul style="list-style-type: none"> • I0009: English • I0007: German • I040c: French 	The default setting is the respective language setting of the target system or English if the setup wizard does not support this language

After the software is uninstalled, the following return codes are reported:

Return code	Description
0	Uninstall successful
-1	Error A detailed log file is saved in the logs folder, which can be found in the target folder (e.g.: C:\Programme\SEW\Loggs)
-2	Uninstall successful, restart necessary
-3	Uninstall successful, restart necessary, the uninstall process will be continued after restart

4.5 Firewall settings

All programs of the software package must be enabled in your firewall in order to use MOVITOOLS® MotionStudio.

If you use a Windows firewall, the programs will be enabled automatically during the installation.

INFORMATION



Enabling the programs in your firewall

- If you do **not** use a Windows firewall, make sure the following programs are enabled in your firewall.

Program	Protocols	Ports
SEWManager.exe	UDP and TCP	300 – 310
AddrTool.exe		
Ofdas.exe		
SewDx9.exe		
NeolDE.exe		
Secos.exe		
Gateway.exe		
GatewayDDE.exe		
Usp.exe		

5 Requirements for operation

5.1 Font size settings for display texts with Windows®

INFORMATION

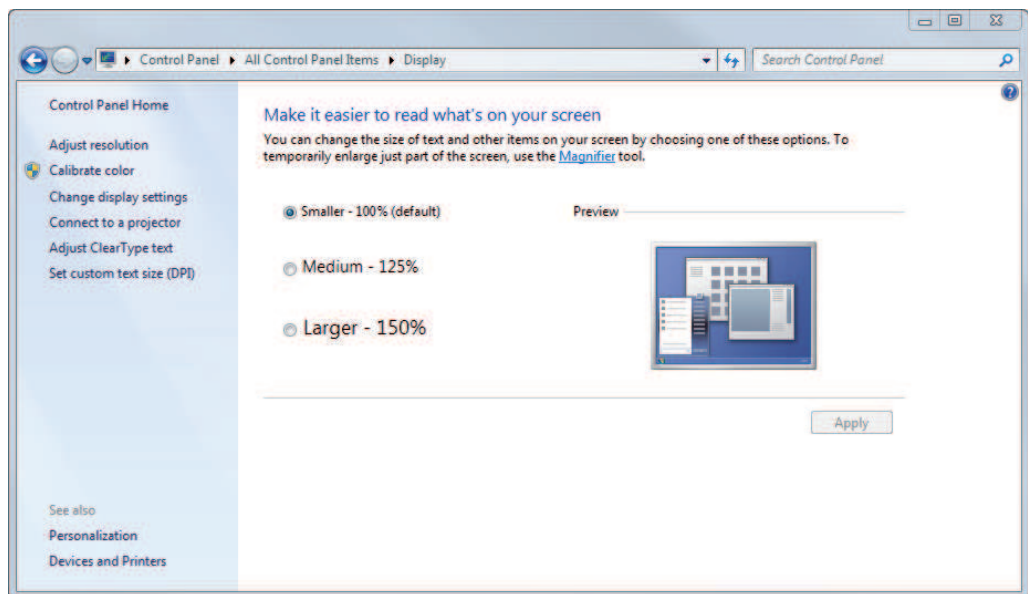


Loss of displayed information

- Always use font size 100% when working with MOVITOOLS® MotionStudio.

Proceed as follows to change the font size of display texts with Windows®:

1. Choose "Display" in the control panel:



12009070987

2. Check the radio button "Smaller - 100% (default)".
3. Click the [Apply] button.

Note: Depending on the operating system in use, it may be necessary to restart the computer to apply the settings.

5.2 Registry keys to be enabled

- Enable the following registry keys and subfolders:

Keys	Rights
HKEY_LOCAL_MACHINE\SOFTWARE\Wow6432Node\AutomationAlliance\	Full access
HKEY_LOCAL_MACHINE\SOFTWARE\AutomationAlliance\Targets	
HKEY_LOCAL_MACHINE\SOFTWARE\Wow6432Node\SEW	
HKEY_LOCAL_MACHINE\SOFTWARE\SEW	
HKEY_LOCAL_MACHINE\SOFTWARE\Microsoft\Windows\CurrentVersion\App Paths\SafePlcM.exe	
HKEY_LOCAL_MACHINE\SOFTWARE\Microsoft\Windows\CurrentVersion\App Paths\SafePlcMA.exe	
HKEY_LOCAL_MACHINE\SOFTWARE\Microsoft\Windows\CurrentVersion\App Paths\AssistUCS.exe	
HKEY_LOCAL_MACHINE\SOFTWARE\Microsoft\Windows\CurrentVersion\App Paths\SEWManager.exe	
HKEY_LOCAL_MACHINE\SOFTWARE\Wow6432Node\3S-Smart Software Solutions GmbH	
HKEY_LOCAL_MACHINE\SOFTWARE\3S-Smart Software Solutions	
HKEY_CURRENT_USER\Software\SEW	
HKEY_CURRENT_USER\Software\SEW-EURODRIVE GmbH & Co KG	
HKEY_CURRENT_USER\Software\SEW Eurodrive GmbH & Co	
HKEY_CURRENT_USER\Software\3S-Smart Software Solutions GmbH	
HKEY_CURRENT_USER\Software\Peak	

5.3 Folders and applications to be enabled

- Allow the following folders and applications to be accessed:

Keys	Rights V 5.90	Rights from V 6.0
.\\ProgramData\\SEW	Full access	Full access
.\\ProgramData\\Gateway Files		
.\\Program Files (x86)\\SEW\\MotionStudio\\Sew-Manager.exe		
.\\Program Files (x86)\\SEW\\MOVITools\\Bin\\MtManagr.exe		
.\\Program Files (x86)\\SEW\\SEW-Communication-Server\\Secos.exe		
.\\Program Files (x86)\\SEW\\Logs		
.\\Program Files (x86)\\Common Files\\SEW		
.\\Program Files (x86)\\Common Files\\Aladdin Shared		
.\\Program Files (x86)\\Common Files\\Beijers Shared		
.\\Program Files\\Common Files\\Gateway Files		
.\\Program Files (x86)\\Common Files\\CoDeSysO-PCV2.3		
.\\Users\\[Username]		
.\\Users\\All users		
Temp directory		
C:\\		Read

Observe the following:

- If you use the ApplicationBuilder.PRO, also enable the folder `.\\Program Files (x86)\\SEW\\MotionStudio` with read and write rights.
- If the folders do not exist, create them as administrator and assign the appropriate access rights.

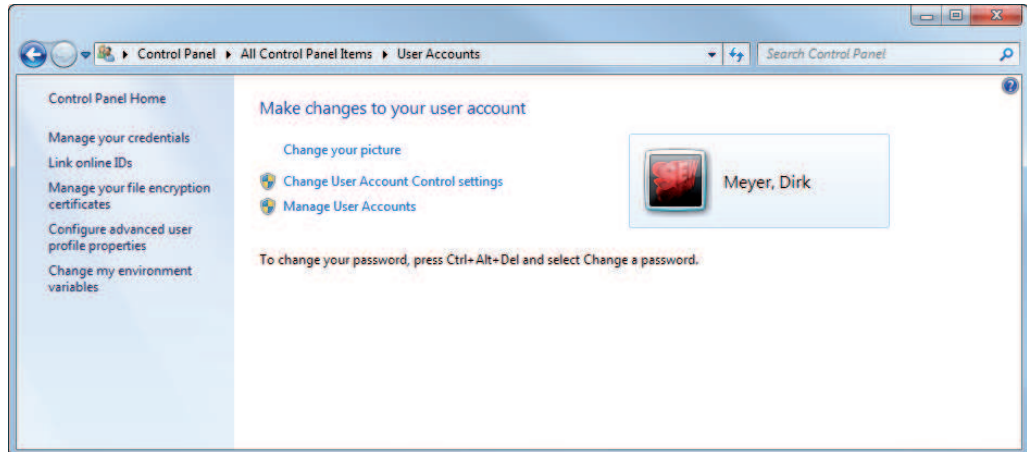
If the folders are created by a user who has only restricted rights or if a program started by such a user creates the folders, these folders will only be assigned the access rights of the user.

6 Operation with user account control

6.1 Activating and changing the user account control

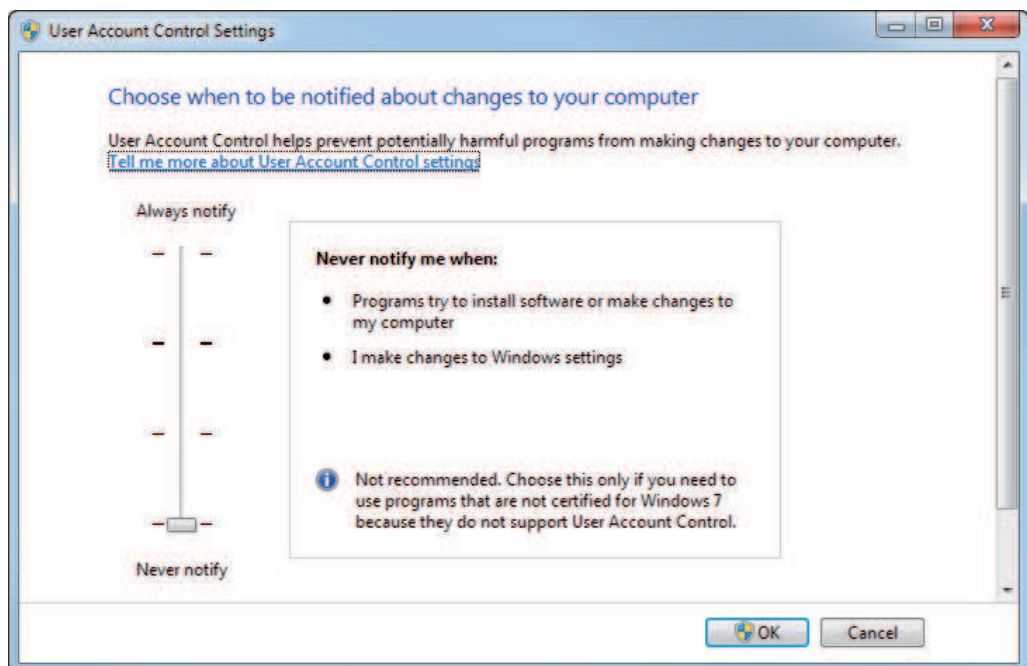
Proceed as follows to activate and change the user account control:

1. Choose "User accounts" in the control panel.



12010690443

2. Choose "Change user account control settings".



12010877323

3. Choose the preferred security level with the slider.

6.2 Consequences for the operation of MOVITOOLS® MotionStudio

If you activate the user account control, MOVITOOLS® MotionStudio cannot open any programs if the user does not have the respective administrator rights.

The following chapter describes how to give administrator rights to MOVITOOLS® MotionStudio using the operating system.

6.3 Activating MOVITOOLS® MotionStudio with activated user account control

If user account control is activated, MOVITOOLS® MotionStudio cannot open the programs (see chapter "Firewall settings" (→ 13)).

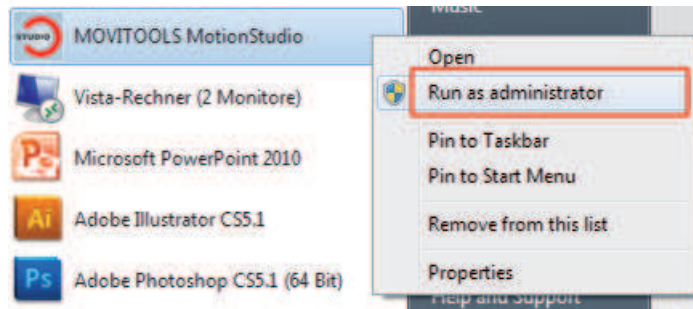
The operating system inhibits the activation of the programs unless MOVITOOLS® MotionStudio is started with administrator rights.

The following instruction describes how to start MOVITOOLS® MotionStudio with administrator rights.

6.3.1 Start with administrator rights

Proceed as follows to start MOVITOOLS® MotionStudio with administrator rights:

1. Mark MOVITOOLS® MotionStudio in the start menu.



12011354635

2. Choose [Run as administrator] from the context menu.

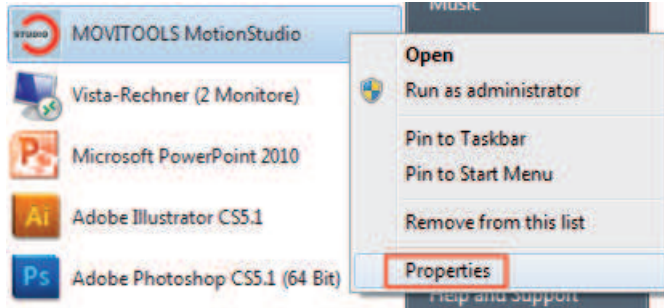
MOVITOOLS® MotionStudio starts with administrator rights and can activate the needed programs.

6.3.2 Adjusting the MOVITOOLS® MotionStudio shortcut

If you adjust the MOVITOOLS® MotionStudio shortcut, it will always start with administrator rights.

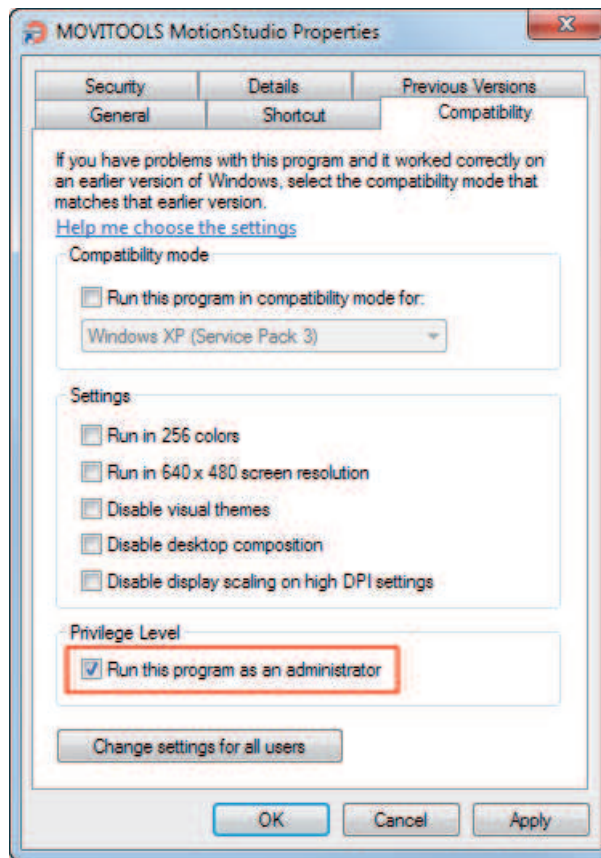
Proceed as follows to adjust the MOVITOOLS® MotionStudio shortcut:

1. Mark MOVITOOLS® MotionStudio in the start menu.



12011358731

2. Choose [properties] in the context menu.
A window opens displaying the properties of MOVITOOLS® MotionStudio.
3. Switch to the "Compatibility" tab.



12011478283

4. Choose the privilege level "Run this program as an administrator".
5. Confirm your entries by clicking the buttons [Apply] and [OK].

6.3.3 Behavior after the start

If MOVITOOLS® MotionStudio is run as administrator with activated user account control, the operating system Windows will display the following message (example):

Do you want to allow the following program from an unknown publisher to make changes to your computer?

Program name: SEWManager.exe

Verified publisher: ...

File origin: ...

Enter the administrator password and click "Yes" to continue.

After the administrator password has been entered, MOVITOOLS® MotionStudio starts and can activate other programs.

INFORMATION



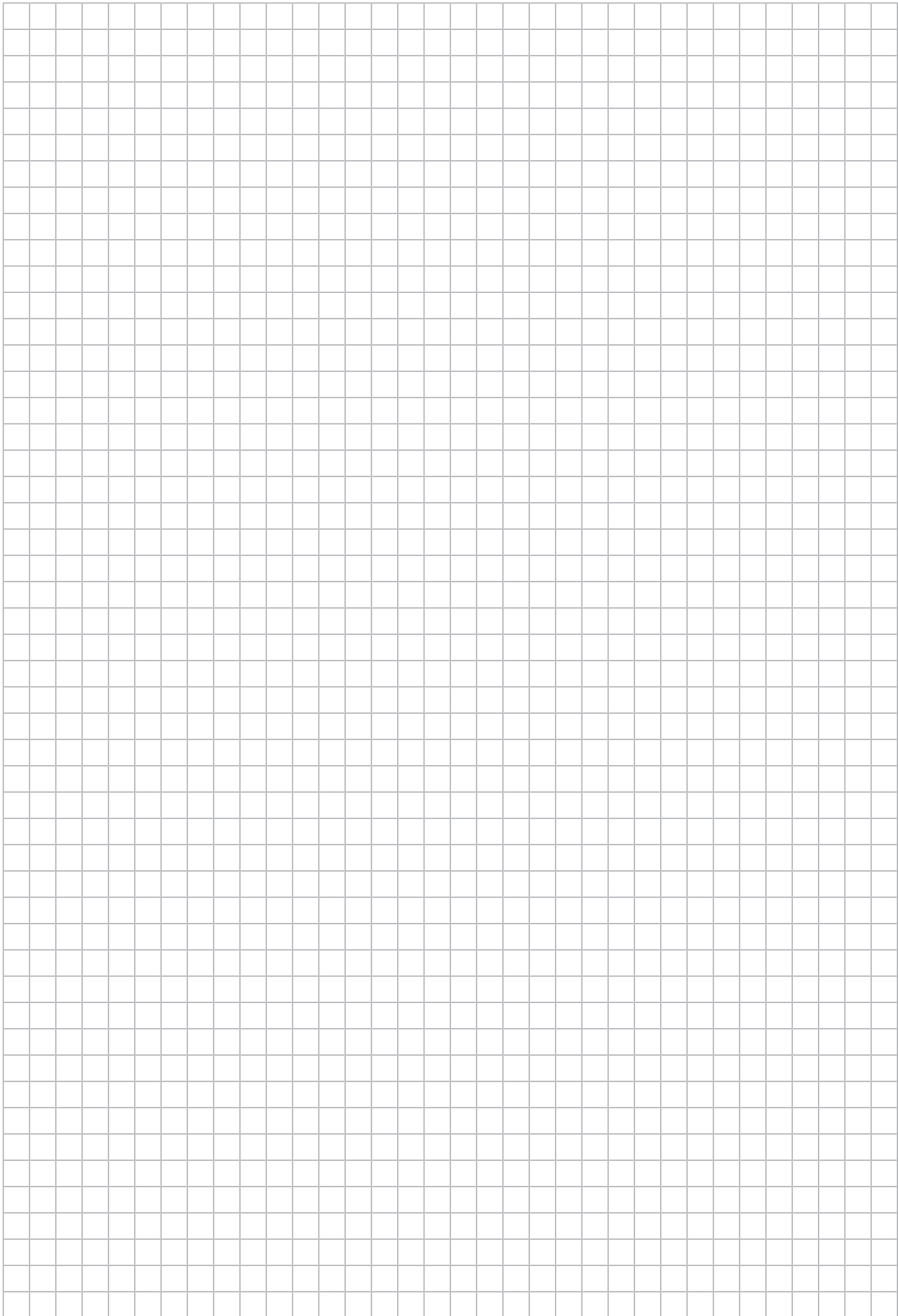
If you need further information on who to create user accounts / user account control and administrator rights, refer to the help of your Windows® operating system

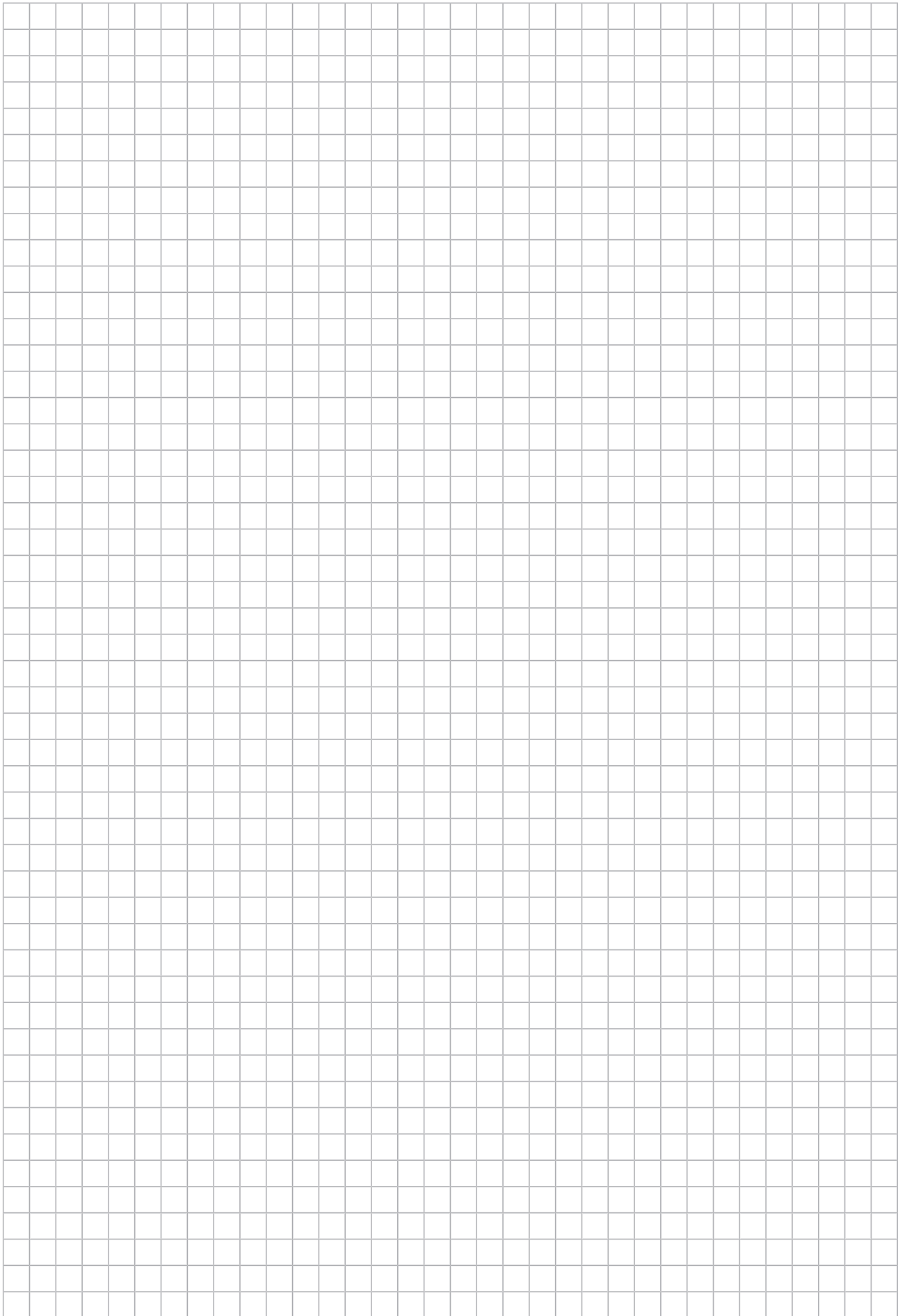
6.3.4 Inhibiting the message window of Windows®

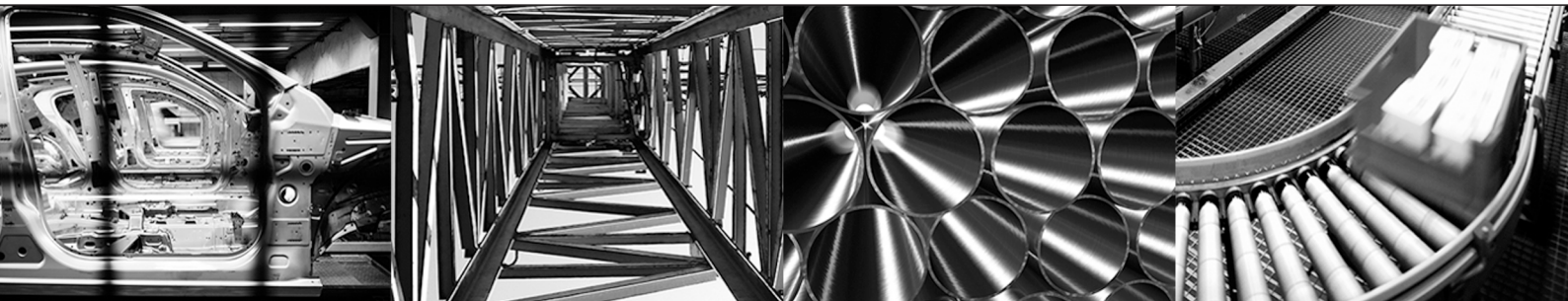
You can inhibit the message of the operating system described above to be displayed every time by using the software "Privilege Authority".

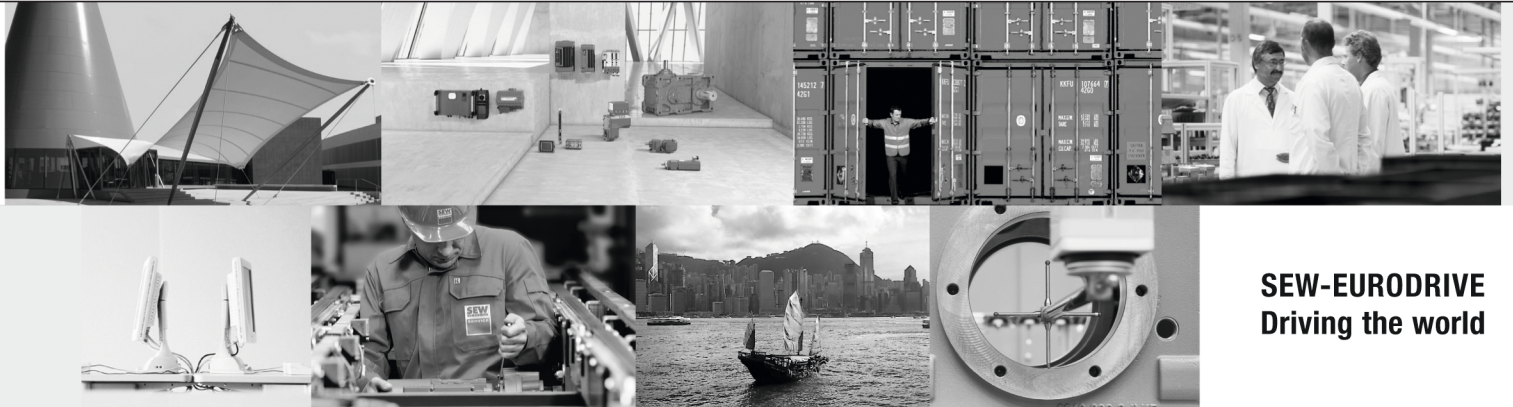
The software "Privilege Authority" is not part of the MOVITOOLS® MotionStudio software package.

"Privilege Authority" and other software with comparable functions are available for download on the internet.









SEW-EURODRIVE
Driving the world

SEW
EURODRIVE

SEW-EURODRIVE GmbH & Co KG
Ernst-Blickle-Str. 42
76646 BRUCHSAL
GERMANY
Tel. +49 7251 75-0
Fax +49 7251 75-1970
sew@sew-eurodrive.com
→ www.sew-eurodrive.com