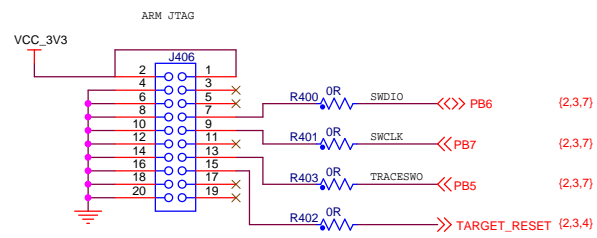
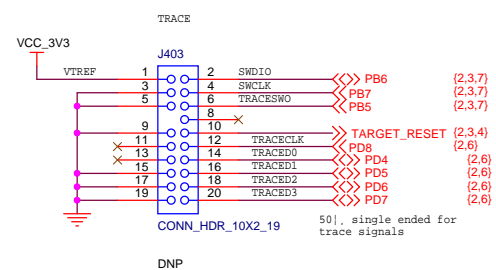
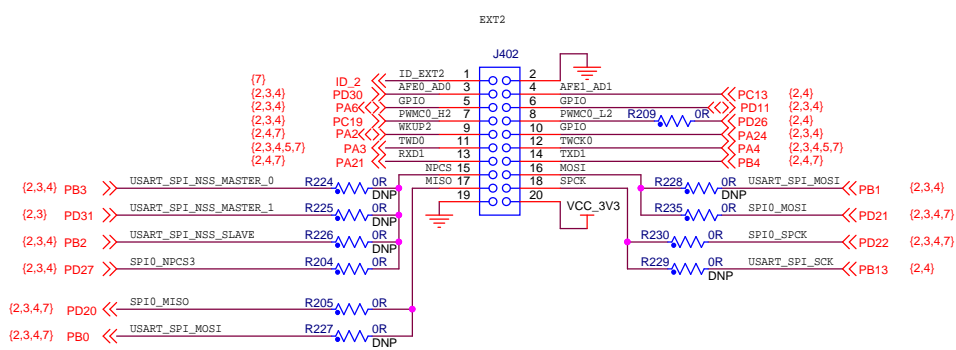
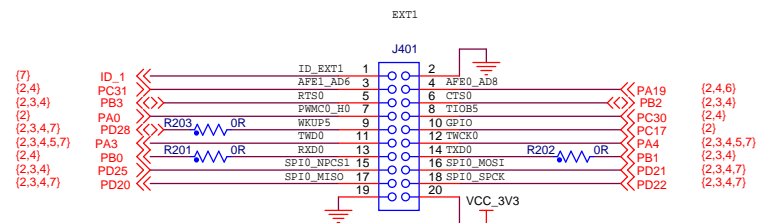
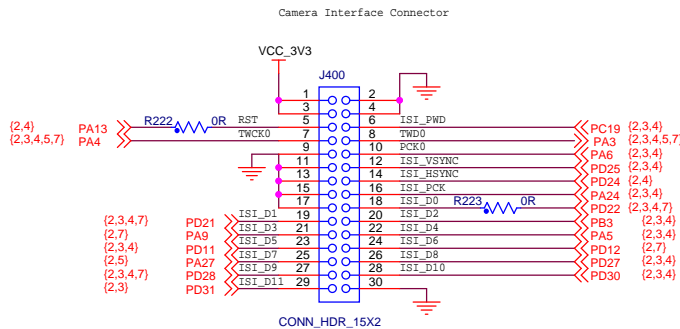
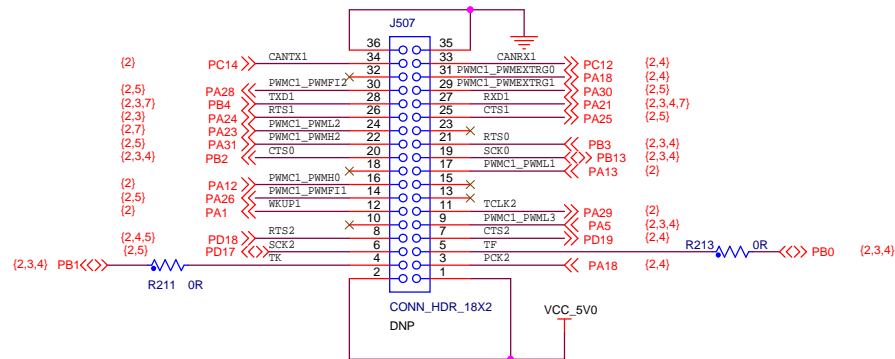
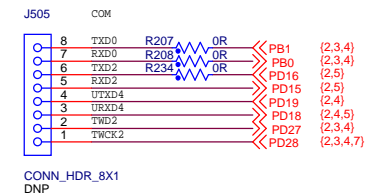
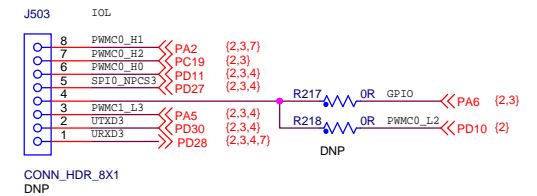
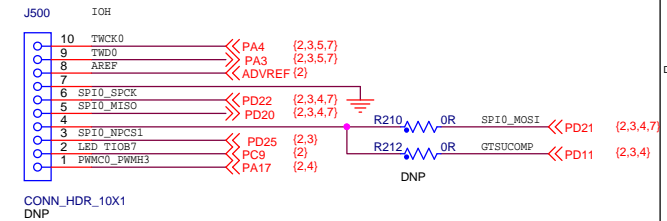
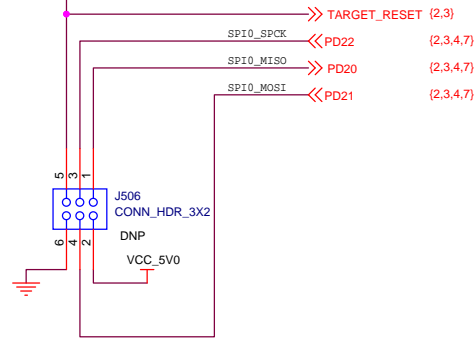
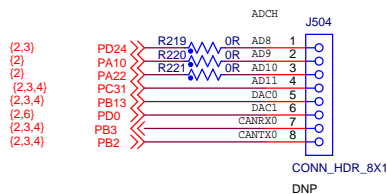
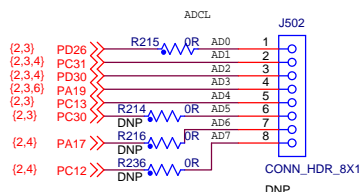
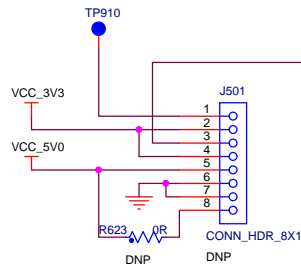


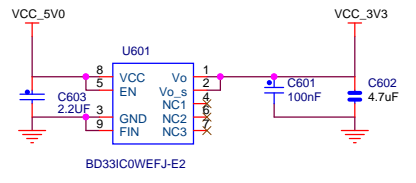
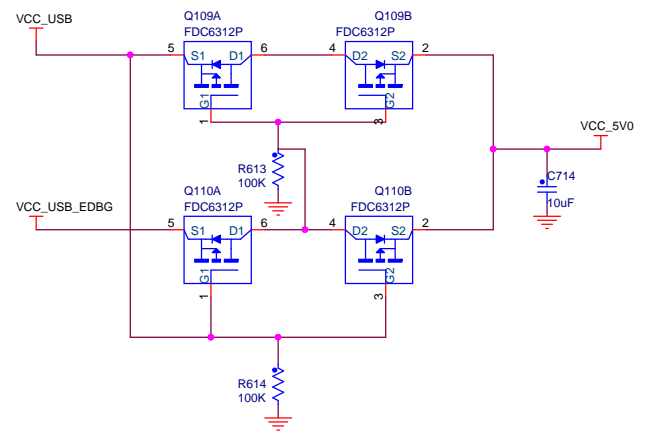
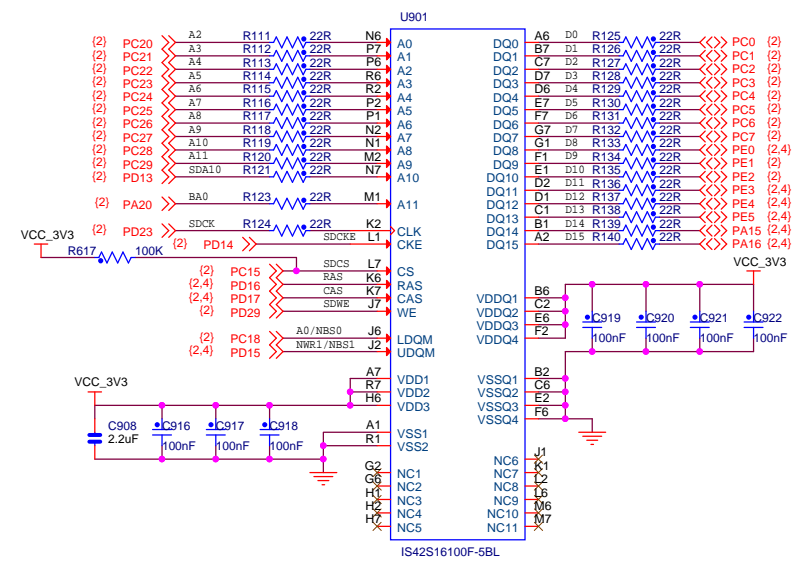
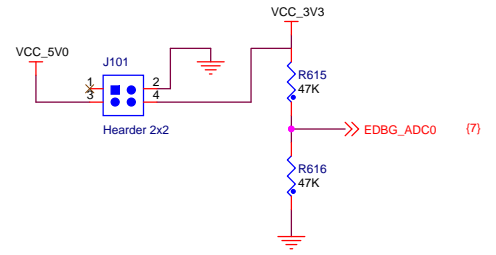
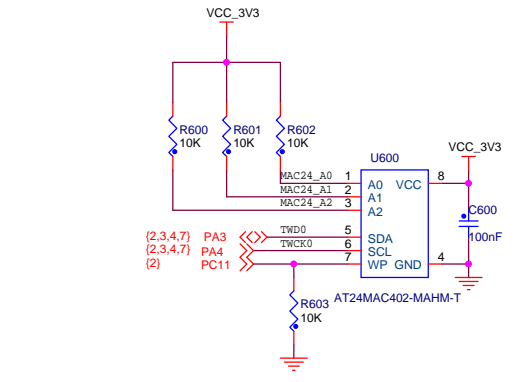
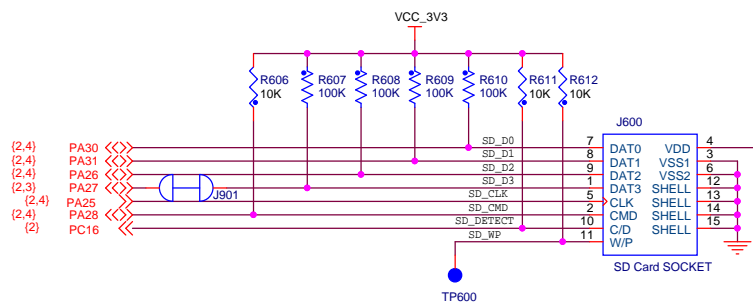
A	RevA	Embest	14-Oct-15		
A	INIT EDIT				
REV	MODIF.	DES.	DATE	VER.	DATE
SAME70-XPLD		SCALE	1/1	REV.	SHEET
TOP				A	1/4



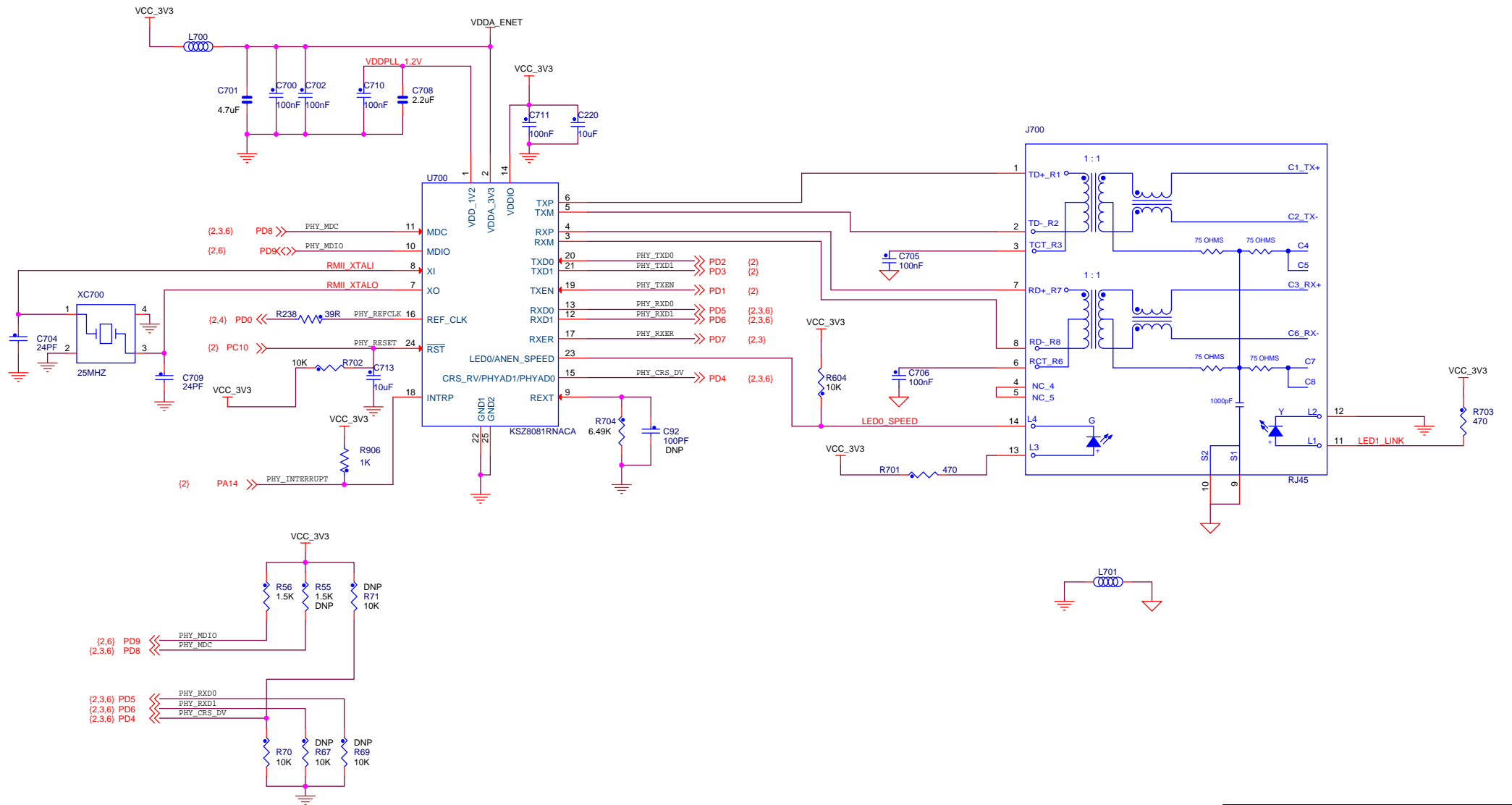
Atmel		RevA		Embest 14-Oct-15	
SAME70-XPLD		SCALE 1/1		REV. SHEET	
Extension Connectors		REV. A		SHEET 3/7	



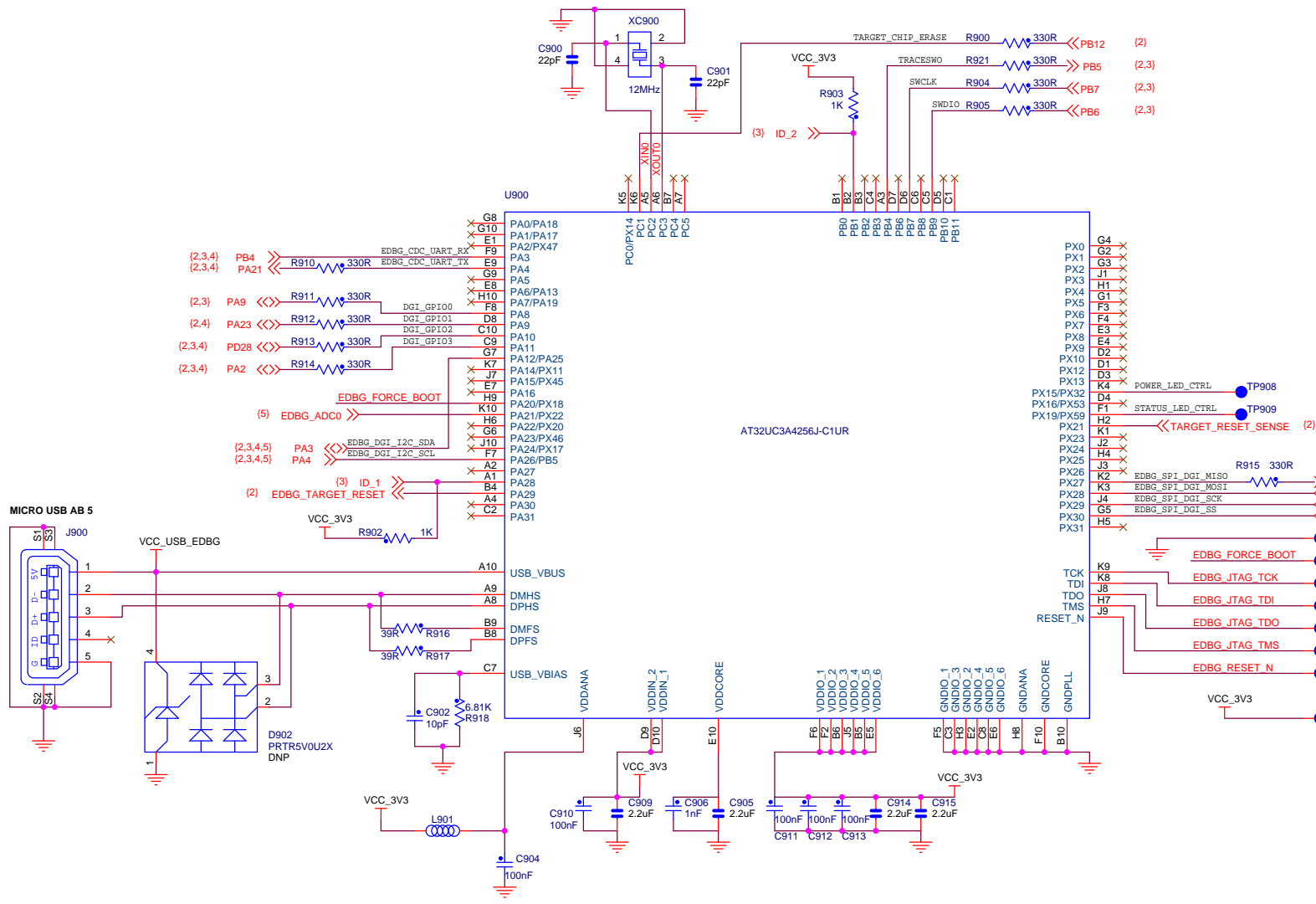
Atmel		RevA	Embest	14-Oct-15		
		INIT EDIT				
SAME70-XPLD		Rev	Modif.	Des.	Date	Ver.
Shield Connectors		SCALE	1/1			REV. SHEET
						A 4/7



Atmel		RevA	Embest	14-Oct-15		
		INIT	EDIT			
SAME70-XPLD		SCALE	1/1	REV.	A	SHEET
Memory & Power						5/7



		RevA	Embrest	14-Oct-15		
		INIT EDIT	DES.	DATE	VER.	DATE
SAME70-XPLD		SCALE	1/1		REV.	SHEET
Ethernet				A	6/7	



Connect TP900 to TP901 during startup of the EDBG to force it into bootloader mode

		A	RevA	Embest	14-Oct-15
SAME70-XPLD Embedded Debugger		SCALE	1/1	REV.	A
				SHEET	7/7