

**Canon**  
**imageRUNNER,**  
**imageRUNNER ADVANCE &**  
**imagePRESS Series**

**Copy Control I/F Reference Document**

**For Use Only by Authorized Canon Dealers**

**BEFORE REVIEWING OR USING, PLEASE SEE TERMS  
OF USE ON PAGES 2 & 3 HEREOF.**

March 21, 2012

Revision

v1.3.1

Published by

**Canon U.S.A., Inc.**

One Canon Plaza

Lake Success, NY 11042- 1198

Canon U.S.A. Developer Support website: <http://www.developersupport.canon.com>

Distributed in the United States by Canon U.S.A., Inc.

This Canon imageRUNNER & imageRUNNER ADVANCE & imagePRESS Series Copy Control I/F Reference Document (the “Reference Document”) is the property of Canon U.S.A., Inc.

© Canon U.S.A., Inc. 2012. All rights reserved.

## TERMS OF USE

This Reference Document is solely for reference purposes and may only be used by authorized Canon U.S.A., Inc. third party development partners and other people/entities involved in the development or provision of foreign device interface solutions for use with Canon imageRUNNER, imageRUNNER ADVANCE and imagePRESS devices. No part of this Reference Document may be reproduced or transmitted in any form by any means, electronic or mechanical, for any purpose without the prior written consent of Canon U.S.A., Inc.

The information contained in this Reference Document constitutes confidential information of Canon U.S.A., Inc. and will be treated accordingly by any authorized Canon U.S.A., Inc. third party development partners or other people/entities involved in the development or provision of foreign device interface solutions for use with Canon imageRUNNER, imageRUNNER ADVANCE and imagePRESS devices that accesses the Reference Document.

Each authorized Canon U.S.A., Inc. third party development partner or other person /entity involved in the development or provision of foreign device interface solutions for use with Canon imageRUNNER, imageRUNNER ADVANCE and imagePRESS devices that accesses this Reference Document agrees to indemnify Canon U.S.A., Inc., its parent, subsidiaries and affiliates (the “Canon Entities”) and to hold the Canon Entities harmless from and against any and all claims arising out of such partner’s, person’s or entity’s possession, use, misuse or disclosure of this Reference Document and any information contained herein.

Canon U.S.A., Inc. from time to time may update this Reference Document either electronically or

mechanically and may modify the information and/ or specifications contained herein at any time without notice. The latest version of the Reference Document is available online at the website noted above. Please make certain that you are using the latest version of the Reference Document. Any specimens from webpages included herein are for illustration purposes only.

CANON, imageRUNNER, imageRUNNER ADVANCE and imagePRESS are registered trademarks of Canon Inc. in the United States and may also be registered trademarks in other countries. All other referenced product names and marks are trademarks of their respective owners and are hereby acknowledged. Specifications and availability are subject to change without notice.

Table of Contents

1	Overview .....	7
1.1	About Copy Control Interface (CC-IF).....	7
1.2	About this document.....	8
1.2.1	This document contains following sections .....	8
1.3	Terminology .....	8
2	CC-IF Chart.....	9
2.1	Sample Chart.....	9
2.2	B/W.....	10
2.3	Color.....	18
3	Connecting Hardware / Cable .....	22
3.1	imageRUNNER Copy Control Interface Cable (Item #7096A012AA) .....	22
3.2	imageRUNNER Copy Control Interface Cable – K1 (Service Part #FM2-5958-000).....	23
3.3	Copy Control Interface Cable-A1 (Item #3726B002BA) .....	24
3.4	Copy Control Interface Kit-B1 (Item #4741B001AA) .....	25
3.5	Port Connection Kit-A1 (Sales Item #2290B001AA).....	26
3.6	Copy Control Interface Kit A1 (Sales Item #3726B001AA).....	27
3.7	Copy Control Interface Kit C1 (Sales Item #5145B001AA).....	28
4	Connector location.....	29
4.1	iR400S/iR400V/iR400N/iR330S/iR330N.....	29
4.2	iR210S/iR210N/iR210E .....	30
4.3	iR600/iR600V/iR550/iR60.....	31
4.4	iR6000/iR5000/iR5000i/iR5000V/iR6020/iR6020i/iR5020/iR5020i.....	32
4.5	iR3300/iR3300i/iR2800/iR2200 .....	33
4.6	iR8500 .....	34
4.7	iR105 .....	35
4.8	iR7200 .....	36
4.9	iR3320i/iR3320N/iR2220i/iR2220N .....	37
4.10	iR4570/iR3570/iR3570G/iR2870/iR2270/iR2270G/iR3530/iR2830/iR2230.....	38
4.11	iR6570/iR5570/iR5070 .....	39
4.12	iR85/iR85+/iR105+/iR9070/iR8070 .....	40



## Canon iR/iR-ADV/iPR Series CC-IF Reference Document

4.13	iR2020/iR2020i/iR2016/iR2016i .....	41
4.14	iR7105/iR7095/iR7095 Printer/iR7086 .....	42
4.15	iR1025/iR1025N/iR1025iF/iR1023/iR1023N/iR1023iF .....	43
4.16	iR3045/iR3035/iR3030/iR3025 .....	44
4.17	iR5075/iR5065/iR5055/iR5050 .....	45
4.18	iR2030i/iR2025i/iR2022i/iR2022i/iR2018i/iR2018i.....	46
4.19	iR3245/iR3245i/iR3235/iR3235i/iR3230/iR3225.....	47
4.20	iPR1135/iPR1125/iPR1110.....	48
4.21	iR2545/iR2545i/iR2535/iR2535i/iR2530/iR2525.....	49
4.22	iR C3200/iR C3220/iR C2620/iR C2620G .....	50
4.23	iR C3100/iR C3100N/iR C3170U/iR C3170i.....	51
4.24	iR C6800/iR C5800 .....	52
4.25	iRC 5068/iRC 5058/iRC 5870U/iRC6870U .....	53
4.26	iPR C1/iPR C1+ .....	54
4.27	iR C5185/iR C5185i/iR C5180/iR C5180i/iR C4580/iR C4580i/iR C4080/iR C4080i.....	55
4.27.1	Without Port Connection Kit – A1 .....	55
4.27.2	With Port Connection Kit – A1.....	56
4.28	iR C3480/iR C3480i/iR C3380/iR C3380i/iR C3080/iR C3080i/iR C2880/iR C2880i/iR C2550 .....	57
4.28.1	Without Port Connection Kit – A1 .....	57
4.28.2	With Port Connection Kit – A1.....	58
4.29	iPR C7000/7010VP/iPR C6000VP/iPR C6000 .....	59
4.30	iR C1022/iR C1022i/C1030/C1030iF.....	60
4.31	iR-ADV C5000 Series, iR-ADV C7000 Series, iR-ADV C9000 Series, iR-ADV 8000 Series, iR-ADV 6000 Series, iR-ADV C2000 Series, iR-ADV 4000 Series.....	61
4.32	imageRUNNER 1730/1730iF/1740/1740iF/1750/1750iF .....	62
4.33	imageRUNNER 1133.....	63
5	Standby Screen.....	64
6	Service Mode.....	66
6.1	CC-SPSW .....	66
6.2	CC-EXT .....	66

## Canon iR/iR-ADV/iPR Series CC-IF Reference Document

6.3	BWCL-DSP .....	66
6.4	CONTROL.....	66
6.5	MB-CCV .....	67
6.6	PRJOB-CP .....	67
6.7	B4-L-CNT.....	67
6.8	CARD-SW .....	67
7	Appendix 1 .....	69
7.1	Double Pulse .....	69
7.2	Use Send function Without Unlocking the Canon MFP device.....	70
7.2.1	Set up steps .....	70
7.2.1.1	imageRUNNER ADVANCE.....	71
7.2.2	Caution .....	79

## 1 Overview

### 1.1 About Copy Control Interface (CC-IF)

Canon imageRUNNER & imageRUNNER ADVANCE & imagePRESS series devices have a simple analog charging-control function called Copy Control Interface (CC-IF) embedded into the architecture of the engine. CC-IF provides 3<sup>rd</sup> parties with the ability to connect control terminals to Canon MFP devices. Examples of such equipment include copy vending equipment and cost recovery terminals.

CC-IF is divided into following 3 different type of interfaces.

#### ➤ CC-V

This interface is designed for legacy devices. The connector shape of the Canon MFP device is EI 4pin connector. And supported functions are:

- enable/disable function
- count copies

#### ➤ CC-V(CL)

This interface is designed for select imageRUNNER Color devices which have the Port Connection Kit-A1 option. The connector shape is Mini Dsub 15pin connector. In addition to CC-V's function, this interface supports following functions.

- detect paper size
- distinguish color/monochrome

#### ➤ CC-VI

This interface is designed for imageRUNNER ADVANCE devices. Supported functions are same as CC-V(CL), but the connector shape is either Dsub 9pin or CZ7pin.

## 1.2 About this document

### 1.2.1 This document contains following sections.

- CC-IF Chart (Chapter 2)  
This section covers necessary equipment, connector shape/location, supported feature/service mode for each device. This chart should be the first reference point.
- Connecting Hardware / Cable (Chapter 3)  
This section shows the cables and connection kits that are necessary to connect 3<sup>rd</sup> party control terminals to Canon MFP devices.
- Connector Location (Chapter 4)  
This section shows connector locations on the Canon hardware where 3<sup>rd</sup> party control devices should connect to.
- Service Mode (Chapter 5)  
This section shows all service modes related to CC-IF with their settings.

## 1.3 Terminology

MFP     Multi Function Printer

PCB     Printed Circuit Board

## 2 CC-IF Chart

### 2.1 Sample Chart

		<b>B/W</b>	Indicates monochrome or color devices
<b>Model Name</b>		iR2895i iR2896 iR5899	Model names for specific information. Models are usually grouped by common architecture / development and introduction date.
<b>Required Connecting Hardware / Cable</b>		imageRUNNER Copy Control Interface Cable / Item #7096A012AA	Hardware or cable required to connect a 3 <sup>rd</sup> party device to the Canon engine. (YES, NO, or SOME) Provides the item name and part number. Where applicable, also indicates serial number ranges where changes occur.
<b>Ships with Engine</b>		YES	Notes if the cable originally shipped with the engine (either packed with the device or pre-installed), or must be purchased separately. (YES or NO)
<b>Firmware Version</b>		All	Minimum engine firmware version needed. "All" denotes functions with any version of firmware for the device. (YES or NO)
<b>Connector</b>	<b>Location</b>	Click Here	Links within this document to show the internal connection point for the Canon cable inside the MFP.
	<b>Shape</b> (Click the link to see I/O port configuration)	EI 4pin (Male) (AMP/172211-4)	Type of the terminal connection of the connection cable. Links within this document to show an illustration. Also indicates manufacturer / part number of the terminal connection.
	<b>I/F</b> (Click the link to see signal specification)	CC-V	Name of the Canon interface supported by the device.
<b>Function</b>	<b>Enable/Disable Function</b>	YES	Notes support for enable / disable function. (YES or NO)
	<b>Count Copies</b>	YES	Notes support for counting individual copied pages. (YES or NO)
	<b>Detect Paper Size</b>	NO	Notes support for reporting multiple paper sizes (large / small) (YES or NO)
	<b>Distinguish Color/Monochrome</b>	NO	Notes if able to distinguish between color and BW only pages. (YES or NO)
<b>Service Mode</b>	<b>CC-SPSW</b>	YES	Indicates if this service mode setting is available on the MFP and can be set. (YES or NO). YES = setting is available. NO = not present.
	<b>CC-EXT</b>	NO	
	<b>BWCL-DSP</b>	NO	
	<b>CONTROL</b>	YES	
	<b>MB-CCV</b>	YES	
	<b>PRJOB-CP</b>	YES	
	<b>B4-L-CNT</b>	YES	
<b>CARD-SW</b>	NO		
<b>Note</b>			Other notes.

Canon iR/iR-ADV/iPR Series CC-IF Reference Document

2.2 B/W

		B/W				
Model Name		iR400S iR400V iR400N iR330S iR330N	iR210S iR210N iR210E	iR600 iR600V iR550 iR60	iR3250	iR6000 iR5000 iR5000i iR5000V
Required Connecting Hardware / Cable		<a href="#">imageRUNNER Copy Control Interface Cable / Item #7096A012AA</a>	<a href="#">imageRUNNER Copy Control Interface Cable / Item #7096A012AA</a>	<a href="#">imageRUNNER Copy Control Interface Cable / Item #7096A012AA</a>	Device Not Supported	<a href="#">imageRUNNER Copy Control Interface Cable / Item #7096A012AA</a>
Ships with Engine		YES	YES	YES		YES
Firmware Version		ALL	ALL	ALL		ALL
Connector	Location	<a href="#">Click Here</a>	<a href="#">Click Here</a>	<a href="#">Click Here</a>		<a href="#">Click Here</a>
	Shape (Click the link to see I/O port configuration)	<a href="#">EI 4pin (Male) (AMP/172211-4)</a>	<a href="#">EI 4pin (Male) (AMP/172211-4)</a>	<a href="#">EI 4pin (Male) (AMP/172211-4)</a>		<a href="#">EI 4pin (Male) (AMP/172211-4)</a>
	I/F (Click the link to see signal specification)	<a href="#">CC-V</a>	<a href="#">CC-V</a>	<a href="#">CC-V</a>		<a href="#">CC-V</a>
Function	Enable/Disable Function	YES	YES	YES		YES
	Count Copies	YES	YES	YES		YES
	Detect Paper Size	NO	NO	NO		NO
	Distinguish Color/Monochrome	NO	NO	NO		NO
Service Mode	CC-SPSW	NO	NO	NO	NO	
	CC-EXT	NO	NO	NO	NO	
	BWCL-DSP	NO	NO	NO	NO	
	CONTROL	NO	NO	NO	YES	
	MB-CCV	YES	YES	YES	YES	
	PRJOB-CP	NO	NO	NO	NO	
	B4-L-CNT	YES	YES	YES	YES	
	CARD-SW	NO	NO	NO	NO	
Note		Use a jumper pin to activate the CC-IF	Use jumper pin to activate the CC-IF	Use jumper pin to activate the CC-IF	Use jumper pin to activate the CC-IF	

Canon iR/iR-ADV/iPR Series CC-IF Reference Document

		B/W				
Model Name		iR3300 iR3300i iR2800 iR2200	iR8500	iR105	iR7200	iR2010F iR2000 iR1600
Required Connecting Hardware / Cable		<a href="#">imageRUNNER Copy Control Interface Cable / Item #7096A012AA</a>	<a href="#">imageRUNNER Copy Control Interface Cable/Item #7096A012AA</a>	<a href="#">imageRUNNER Copy Control Interface Cable/Item #7096A012AA</a>	<a href="#">imageRUNNER Copy Control Interface Cable / Item #7096A012AA</a>	
Ships with Engine		NO	YES (MPB05988 and after) NO (Prior to MPB05988)	YES (MPT01032 and after) NO (Prior to MPT01032)	YES (manufactured Dec. 2001 and after) NO (manufactured before Dec. 2001)	
Firmware Version		ALL	ALL	ALL	ALL	
Connector	Location	<a href="#">Click Here</a>	<a href="#">Click Here</a>	<a href="#">Click Here</a>	<a href="#">Click Here</a>	Device Not Supported
	Shape (Click the link to see I/O port configuration)	<a href="#">EI 4pin (Male) (AMP/172211-4)</a>	<a href="#">EI 4pin (Male) (AMP/172211-4)</a>	<a href="#">EI 4pin (Male) (AMP/172211-4)</a>	<a href="#">EI 4pin (Male) (AMP/172211-4)</a>	
	I/F (Click the link to see signal specification)	<a href="#">CC-V</a>	<a href="#">CC-V</a>	<a href="#">CC-V</a>	<a href="#">CC-V</a>	
Function	Enable/Disable Function	YES	YES	YES	YES	
	Count Copies	YES	YES	YES	YES	
	Detect Paper Size	NO	NO	NO	NO	
	Distinguish Color/Monochrome	NO	NO	NO	NO	
Service Mode	CC-SPSW	NO	NO	NO	NO	
	CC-EXT	NO	NO	NO	NO	
	BWCL-DSP	NO	NO	NO	NO	
	CONTROL	YES	YES	YES	YES	
	MB-CCV	YES	YES	YES	YES	
	PRJOB-CP	YES	YES	YES	YES	
	B4-L-CNT	YES	YES	YES	YES	
CARD-SW	NO	NO	NO	NO		
Note		Use jumper pin to activate the CC-IF	Use jumper pin to activate the CC-IF	Use jumper pin to activate the CC-IF	Use jumper pin to activate the CC-IF	

Canon iR/iR-ADV/iPR Series CC-IF Reference Document

		B/W				
Model Name		iR1670F iR1630 iR1370F iR1330 iR1310	iR3320i iR3320N iR2220i iR2220N	iR6020 iR6020i iR5020 iR5020i	iR4570	iR3570 iR3570G
Required Connecting Hardware / Cable		<a href="#">imageRUNNER Copy Control Interface Cable / Item #7096A012AA</a>				
Ships with Engine		NO	YES	YES (KFV10991 and after) NO (KBF and prior to KFV10991)	YES (KFP05975 and after) NO (KAY and prior to KFP05975)	
Firmware Version		ALL	ALL	ALL	ALL	
Connector	Location	<a href="#">Click Here</a>				
	Shape (Click the link to see I/O port configuration)	<a href="#">EI 4pin (Male) (AMP/172211-4)</a>				
	I/F (Click the link to see signal specification)	<a href="#">CC-V</a>				
Function	Enable/Disable Function	YES	YES	YES	YES	
	Count Copies	YES	YES	YES	YES	
	Detect Paper Size	NO	NO	NO	NO	
	Distinguish Color/Monochrome	NO	NO	NO	NO	
Service Mode	CC-SPSW	NO	NO	YES	YES	
	CC-EXT	NO	NO	NO	NO	
	BWCL-DSP	NO	NO	NO	NO	
	CONTROL	YES	YES	YES	YES	
	MB-CCV	YES	YES	YES	YES	
	PRJOB-CP	YES	YES	YES	YES	
	B4-L-CNT	YES	YES	YES	YES	
CARD-SW	NO	NO	NO	NO		
Note		Use jumper pin to activate the CC-IF	Use jumper pin to activate the CC-IF			



Canon iR/iR-ADV/iPR Series CC-IF Reference Document

		B/W				
Model Name		iR2870	iR2270 iR2270G	iR3530	iR2830	iR2230
Required Connecting Hardware / Cable		<a href="#">imageRUNNER Copy Control Interface Cable/Item #7096A012AA</a>	<a href="#">imageRUNNER Copy Control Interface Cable/Item #7096A012AA</a>	<a href="#">imageRUNNER Copy Control Interface Cable/Item #7096A012AA</a>	<a href="#">imageRUNNER Copy Control Interface Cable/Item #7096A012AA</a>	<a href="#">imageRUNNER Copy Control Interface Cable/Item #7096A012AA</a>
Ships with Engine		YES (KGC02324 and after) NO (KBM and prior to KGC02324)	YES (KGJ07196 and after) NO (KBT and prior to KGJ07196)	YES (KJG04808 and after) NO (Prior to KJG04808)	YES (KJY01228 and after) NO (Prior to KJY01218)	YES (KJC05074 and after) NO (Prior to KJC05074)
Firmware Version		ALL	ALL	ALL	ALL	ALL
Connector	Location	<a href="#">Click Here</a>	<a href="#">Click Here</a>	<a href="#">Click Here</a>	<a href="#">Click Here</a>	<a href="#">Click Here</a>
	Shape (Click the link to see I/O port configuration)	<a href="#">EI 4pin (Male) (AMP/172211-4)</a>	<a href="#">EI 4pin (Male) (AMP/172211-4)</a>	<a href="#">EI 4pin (Male) (AMP/172211-4)</a>	<a href="#">EI 4pin (Male) (AMP/172211-4)</a>	<a href="#">EI 4pin (Male) (AMP/172211-4)</a>
	I/F (Click the link to see signal specification)	<a href="#">CC-V</a>	<a href="#">CC-V</a>	<a href="#">CC-V</a>	<a href="#">CC-V</a>	<a href="#">CC-V</a>
Function	Enable/Disable Function	YES	YES	YES	YES	YES
	Count Copies	YES	YES	YES	YES	YES
	Detect Paper Size	NO	NO	NO	NO	NO
	Distinguish Color/Monochrome	NO	NO	NO	NO	NO
Service Mode	CC-SPSW	YES	YES	YES	YES	YES
	CC-EXT	NO	NO	NO	NO	NO
	BWCL-DSP	NO	NO	NO	NO	NO
	CONTROL	YES	YES	YES	YES	YES
	MB-CCV	YES	YES	YES	YES	YES
	PRJOB-CP	YES	YES	YES	YES	YES
	B4-L-CNT	YES	YES	YES	YES	YES
CARD-SW	NO	NO	NO	NO	NO	
Note						

Canon iR/iR-ADV/iPR Series CC-IF Reference Document

		B/W				
Model Name		iR6570 iR5570 iR5070	iR85 iR85+ iR105+ iR9070 iR8070	iR2020 iR2020i iR2016 iR2016i	iR7105 iR7095 iR7095 Printer iR7086	iR1025 iR1025N iR1025iF iR1023 iR1023N iR1023iF
Required Connecting Hardware / Cable		<a href="#">imageRUNNER Copy Control Interface Cable/Item #7096A012AA</a>	<a href="#">imageRUNNER Copy Control Interface Cable / Item #7096A012AA</a>	<a href="#">imageRUNNER Copy Control Interface Cable – K1 / Service Part #FM2-5958-000</a>	<a href="#">imageRUNNER Copy Control Interface Cable/Item #7096A012AA</a>	<a href="#">imageRUNNER Copy Control Interface Cable – K1 / Service Part #FM2-5958-000</a>
Ships with Engine		YES	YES	NO	YES	NO
Firmware Version		ALL	ALL	15.01 or higher	ALL	ALL
Connector	Location	<a href="#">Click Here</a>	<a href="#">Click Here</a>	<a href="#">Click Here</a>	<a href="#">Click Here</a>	<a href="#">Click Here</a>
	Shape (Click the link to see I/O port configuration)	<a href="#">EI 4pin (Male) (AMP/172211-4)</a>	<a href="#">EI 4pin (Male) (AMP/172211-4)</a>	<a href="#">EI 4pin (Male) (AMP/172211-4)</a>	<a href="#">EI 4pin (Male) (AMP/172211-4)</a>	<a href="#">EI 4pin (Male) (AMP/172211-4)</a>
	I/F (Click the link to see signal specification)	<a href="#">CC-V</a>	<a href="#">CC-V</a>	<a href="#">CC-V</a>	<a href="#">CC-V</a>	<a href="#">CC-V</a>
Function	Enable/Disable Function	YES	YES	YES	YES	YES
	Count Copies	YES	YES	YES	YES	YES
	Detect Paper Size	NO	NO	NO	NO	NO
	Distinguish Color/Monochrome	NO	NO	NO	NO	NO
Service Mode	CC-SPSW	YES	YES	YES	YES	YES
	CC-EXT	NO	NO	NO	NO	NO
	BWCL-DSP	NO	NO	NO	NO	NO
	CONTROL	YES	YES	NO	YES	NO
	MB-CCV	YES	YES	NO	YES	NO
	PRJOB-CP	YES	YES	NO	YES	NO
	B4-L-CNT	YES	YES	NO	YES	NO
CARD-SW	NO	NO	NO	NO	NO	
Note				Technical Publication TP06_161		

Canon iR/iR-ADV/iPR Series CC-IF Reference Document

		B/W				
Model Name		iR3045 iR3035 iR3030 iR3025	iR5075 iR5065 iR5055 iR5050	iR2030i iR2025i iR2022 iR2022i iR2018 iR2018i	iR3245 iR3245i iR3235 iR3235i iR3230 iR3225	iPR1135 iPR1125 iPR1110
Required Connecting Hardware / Cable		<a href="#">imageRUNNER Copy Control Interface Cable/Item #7096A012AA</a>	<a href="#">imageRUNNER Copy Control Interface Cable/Item #7096A012AA</a>	<a href="#">Copy Control Interface Cable-A1 / Item #3726B002BA</a>	<a href="#">Copy Control Interface Kit-B1 / Item #4741B001AA</a>	<a href="#">Copy Control Interface Kit-B1 / Item #4741B001AA</a>
Ships with Engine		YES	YES	NO	YES	NO
Firmware Version		ALL	ALL	ALL	ALL	ALL
Connector	Location	<a href="#">Click Here</a>	<a href="#">Click Here</a>	<a href="#">Click Here</a>	<a href="#">Click Here</a>	<a href="#">Click Here</a>
	Shape (Click the link to see I/O port configuration)	<a href="#">EI 4pin (Male) (AMP/172211-4)</a>	<a href="#">EI 4pin (Male) (AMP/172211-4)</a>	<a href="#">EI 4pin (Male) (AMP/172211-4)</a>	<a href="#">EI 4pin (Male) (AMP/172211-4)</a>	<a href="#">EI 4pin (Male) (AMP/172211-4)</a>
	I/F (Click the link to see signal specification)	<a href="#">CC-V</a>	<a href="#">CC-V</a>	<a href="#">CC-V</a> (CC-VI on PCB)	<a href="#">CC-V</a> (CC-VI on PCB)	<a href="#">CC-V</a> (CC-VI on PCB)
Function	Enable/Disable Function	YES	YES	YES	YES	YES
	Count Copies	YES	YES	YES	YES	YES
	Detect Paper Size	NO	NO	YES (Large/Small)	NO	NO
	Distinguish Color/Monochrome	NO	NO	NO	NO	NO
Service Mode	CC-SPSW	YES	YES	YES	YES	YES
	CC-EXT	NO	NO	NO	NO	NO
	BWCL-DSP	NO	NO	NO	NO	NO
	CONTROL	YES	YES	NO	YES	YES
	MB-CCV	YES	YES	NO	YES	YES
	PRJOB-CP	YES	YES	NO	YES	YES
	B4-L-CNT	YES	YES	YES	YES	YES
CARD-SW	NO	NO	NO	NO	NO	
Note						

Canon iR/iR-ADV/iPR Series CC-IF Reference Document

		B/W				
Model Name		iR2545 iR2545i iR2535 iR2535i iR2530 iR2525	iR-ADV 8105 iR-ADV 8095 iR-ADV 8085	iR-ADV 6075 iR-ADV 6065 iR-ADV 6055	iR1730 iR1730iF iR1740 iR1740iF iR1750 iR1750iF	iR1133
Required Connecting Hardware / Cable		<a href="#">Copy Control Interface Cable-A1 / Item #3726B002BA</a>	<a href="#">Copy Control Interface Kit A1 (Sales Item #3726B001AA)</a>	<a href="#">Copy Control Interface Kit A1 (Sales Item #3726B001AA)</a>	<a href="#">Copy Control Interface Cable-A1 / Item #3726B002BA</a>	<a href="#">Copy Control Interface Kit C1 (Sales Item #5145B001AA)</a>
Ships with Engine		NO	NO	NO	NO	NO
Firmware Version		ALL	ALL	ALL	ALL	ALL
Connector	Location	<a href="#">Click Here</a>	<a href="#">Click Here</a>	<a href="#">Click Here</a>	<a href="#">Click Here</a>	<a href="#">Click Here</a>
	Shape (Click the link to see I/O port configuration)	<a href="#">E1 4pin (Male) (AMP/172211-4)</a>	<a href="#">Dsub 9pin (Female)</a>	<a href="#">Dsub 9pin (Female)</a>	<a href="#">E1 4pin (Male) (AMP/172211-4)</a>	<a href="#">Dsub 9pin (Female)</a>
	I/F (Click the link to see signal specification)	<a href="#">CC-V</a> (CC-VI on PCB)	<a href="#">CC-VI</a>	<a href="#">CC-VI</a>	<a href="#">CC-V</a> (CC-VI on PCB)	<a href="#">CC-VI</a>
Function	Enable/Disable Function	YES	YES	YES	YES	YES
	Count Copies	YES	YES	YES	YES	YES
	Detect Paper Size	YES (Large/Small)	YES (Large/Small)	YES (Large/Small)	NO (Small only)	NO (Small only)
	Distinguish Color/Monochrome	NO	NO	NO	NO	NO
Service Mode	CC-SPSW	YES	YES	YES	YES	YES
	CC-EXT	NO	NO	NO	NO	NO
	BWCL-DSP	NO	NO	NO	NO	NO
	CONTROL	NO	YES	YES	NO	YES
	MB-CCV	NO	YES	YES	NO	NO
	PRJOB-CP	NO	YES	YES	NO	NO
	B4-L-CNT	YES	YES	YES	NO	NO
CARD-SW	NO	NO	NO	NO	NO	
Note						

Canon iR/iR-ADV/iPR Series CC-IF Reference Document

		B/W			
Model Name		iR-ADV 4051 iR-ADV 4045 iR-ADV 4035 iR-ADV 4025			
Required Connecting Hardware / Cable		<a href="#">Copy Control Interface Kit A1 (Sales Item #3726B001AA)</a>			
Ships with Engine		NO			
Firmware Version		ALL			
Connector	Location	<a href="#">Click Here</a>			
	Shape (Click the link to see I/O port configuration)	<a href="#">Dsub 9pin (Female)</a>			
	I/F (Click the link to see signal specification)	<a href="#">CC-VI</a>			
Function	Enable/Disable Function	YES			
	Count Copies	YES			
	Detect Paper Size	YES (Large/Small)			
	Distinguish Color/Monochrome	NO			
Service Mode	CC-SPSW	YES			
	CC-EXT	NO			
	BWCL-DSP	NO			
	CONTROL	YES			
	MB-CCV	YES			
	PRJOB-CP	YES			
	B4-L-CNT	YES			
	CARD-SW	NO			
Note					

2.3 Color

		Color				
Model Name		iRC3200	iRC3100 iRC3100N	iRC6800	iRC5800	iRC3220 iRC2620 iRC2620G
Required Connecting Hardware / Cable		<a href="#">imageRUNNER Copy Control Interface Cable / Item #7096A012AA</a>	<a href="#">imageRUNNER Copy Control Interface Cable / Item #7096A012AA</a>	<a href="#">imageRUNNER Copy Control Interface Cable/Item #7096A012AA</a>	<a href="#">imageRUNNER Copy Control Interface Cable/Item #7096A012AA</a>	<a href="#">imageRUNNER Copy Control Interface Cable / Item #7096A012AA</a>
Ships with Engine		NO	YES	YES (JJM03941 and after) NO (Prior to JJM03941)	YES (KEM00761 and after) NO (Prior to KEM00761)	NO
Firmware Version		ALL	ALL	ALL	ALL	ALL
Connector	Location	<a href="#">Click Here</a>	<a href="#">Click Here</a>	<a href="#">Click Here</a>	<a href="#">Click Here</a>	<a href="#">Click Here</a>
	Shape (Click the link to see I/O port configuration)	<a href="#">EI 4pin (Male) (AMP/172211-4)</a>	<a href="#">EI 4pin (Male) (AMP/172211-4)</a>	<a href="#">EI 4pin (Male) (AMP/172211-4)</a>	<a href="#">EI 4pin (Male) (AMP/172211-4)</a>	<a href="#">EI 4pin (Male) (AMP/172211-4)</a>
	I/F (Click the link to see signal specification)	<a href="#">CC-V</a>	<a href="#">CC-V</a>	<a href="#">CC-V</a>	<a href="#">CC-V</a>	<a href="#">CC-V</a>
Function	Enable/Disable Function	YES	YES	YES	YES	YES
	Count Copies	YES	YES	YES	YES	YES
	Detect Paper Size	NO	NO	NO	NO	NO
	Distinguish Color/Monochrome	NO	NO	NO	NO	NO
Service Mode	CC-SPSW	YES	YES	YES	YES	YES
	CC-EXT	NO	NO	NO	NO	NO
	BWCL-DSP	NO	NO	NO	NO	NO
	CONTROL	YES	YES	YES	YES	YES
	MB-CCV	YES	YES	YES	YES	YES
	PRJOB-CP	YES	YES	YES	YES	YES
	B4-L-CNT	YES	YES	YES	YES	YES
CARD-SW	NO	NO	NO	NO	NO	
Note						

Canon iR/iR-ADV/iPR Series CC-IF Reference Document

		Color				
Model Name		iRC3170U iRC3170i	iRC5870U iRC6870U	iPRC1 iPRC1+	iRC5185 iRC5180 iRC4580 iRC4080	iRC5185i iRC5180i iRC4580i iRC4080i
Required Connecting Hardware / Cable		<a href="#">imageRUNNER Copy Control Interface Cable / Item #7096A012AA</a>	<a href="#">imageRUNNER Copy Control Interface Cable / Item #7096A012AA</a>	<a href="#">imageRUNNER Copy Control Interface Cable / Item #7096A012AA</a>	<a href="#">imageRUNNER Copy Control Interface Cable / Item #7096A012AA</a>	<a href="#">Port Connection Kit-A1 (Sales Item #2290B001AA)</a>
Ships with Engine		YES	YES	YES	YES	
Firmware Version		ALL	ALL	ALL	ALL	78.17 or higher
Connector	Location	<a href="#">Click Here</a>	<a href="#">Click Here</a>	<a href="#">Click Here</a>	<a href="#">Click Here</a>	<a href="#">Click Here</a>
	Shape (Click the link to see I/O port configuration)	<a href="#">EI 4pin (Male) (AMP/172211-4)</a>	<a href="#">EI 4pin (Male) (AMP/172211-4)</a>	<a href="#">EI 4pin (Male) (AMP/172211-4)</a>	<a href="#">EI 4pin (Male) (AMP/172211-4)</a>	<a href="#">Mini Dsub 15pin (Female)</a>
	I/F (Click the link to see signal specification)	<a href="#">CC-V</a>	<a href="#">CC-V</a>	<a href="#">CC-V</a>	<a href="#">CC-V</a>	<a href="#">CC-V(CL)</a>
Function	Enable/Disable Function	YES	YES	YES	YES	YES
	Count Copies	YES	YES	YES	YES	YES
	Detect Paper Size	NO	NO	NO	NO	YES (Large/Small)
	Distinguish Color/Monochrome	NO	NO	NO	NO	YES
Service Mode	CC-SPSW	YES	YES	YES	YES	YES
	CC-EXT	NO	NO	NO	NO	YES
	BWCL-DSP	NO	NO	NO	YES	YES
	CONTROL	YES	YES	YES	YES	YES
	MB-CCV	YES	YES	YES	YES	YES
	PRJOB-CP	YES	YES	YES	YES	YES
	B4-L-CNT	YES	YES	YES	YES	YES
CARD-SW	NO	NO	NO	YES	YES	
Note						Technical Publication TP08_158

Canon iR/iR-ADV/iPR Series CC-IF Reference Document

		Color				
Model Name		iRC3480 iRC3480i iRC3380 iRC3380i iRC3080 iRC3080i iRC2880 iRC2880i iRC2550		iPRC7000VP iPRC7010VP	iRC5068 iRC5058	iPRC6000VP iPRC6000
Required Connecting Hardware / Cable		<a href="#">imageRUNNER Copy Control Interface Cable / Item #7096A012AA</a>	<a href="#">Port Connection Kit-A1 (Sales Item #2290B001AA)</a>	<a href="#">imageRUNNER Copy Control Interface Cable / Item #7096A012AA</a>	<a href="#">imageRUNNER Copy Control Interface Cable / Item #7096A012AA</a>	<a href="#">imageRUNNER Copy Control Interface Cable / Item #7096A012AA</a>
Ships with Engine		YES	NO	NO	YES	NO
Firmware Version		ALL	78.01 or higher	ALL	ALL	ALL
Connector	Location	<a href="#">Click Here</a>	<a href="#">Click Here</a>	<a href="#">Click Here</a>	<a href="#">Click Here</a>	<a href="#">Click Here</a>
	Shape (Click the link to see I/O port configuration)	<a href="#">EI 4pin (Male) (AMP/172211-4)</a>	<a href="#">Mini Dsub 15pin (Female)</a>	<a href="#">EI 4pin (Male) (AMP/172211-4)</a>	<a href="#">EI 4pin (Male) (AMP/172211-4)</a>	<a href="#">EI 4pin (Male) (AMP/172211-4)</a>
	I/F (Click the link to see signal specification)	<a href="#">CC-V</a>	<a href="#">CC-V(GL)</a>	<a href="#">CC-V</a>	<a href="#">CC-V</a>	<a href="#">CC-V</a>
Function	Enable/Disable Function	YES	YES	YES	YES	YES
	Count Copies	YES	YES	YES	YES	YES
	Detect Paper Size	NO	YES (Large/Small)	NO	NO	NO
	Distinguish Color/Monochrome	NO	YES	NO	NO	NO
Service Mode	CC-SPSW	YES	YES	YES	YES	YES
	CC-EXT	NO	YES	NO	NO	NO
	BWCL-DSP	YES	YES	NO	NO	NO
	CONTROL	YES	YES	YES	YES	YES
	MB-CCV	YES	YES	YES	YES	YES
	PRJOB-CP	YES	YES	YES	YES	YES
	B4-L-CNT	YES	YES	YES	YES	YES
CARD-SW	YES	YES	NO	NO	NO	
Note			Technical Publication TP08_158			



Canon iR/iR-ADV/iPR Series CC-IF Reference Document

		Color			
Model Name		iRC1022 iRC1022i iRC1030 iRC1030iF	iR-ADV C5051 iR-ADV C5045 iR-ADV C5035 iR-ADV C5030	iR-ADV C9075 PRO iR-ADV C9065 PRO iR-ADV C7065 iR-ADV C7055	iR-ADV C2030 iR-ADV C2020
Required Connecting Hardware / Cable			<a href="#">Copy Control Interface Kit A1 (Sales Item #3726B001AA)</a>	<a href="#">Copy Control Interface Kit A1 (Sales Item #3726B001AA)</a>	<a href="#">Copy Control Interface Kit A1 (Sales Item #3726B001AA)</a>
Ships with Engine		YES	NO	NO	NO
Firmware Version		ALL	ALL	ALL	ALL
Connector	Location	<a href="#">Click Here</a>	<a href="#">Click Here</a>	<a href="#">Click Here</a>	<a href="#">Click Here</a>
	Shape (Click the link to see I/O port configuration)	<a href="#">CZ 7pin (Male) (JST/B07B-CZHK-B-1)</a>	<a href="#">Dsub 9pin (Female)</a>	<a href="#">Dsub 9pin (Female)</a>	<a href="#">Dsub 9pin (Female)</a>
	I/F (Click the link to see signal specification)	<a href="#">CC-VI</a>	<a href="#">CC-VI</a>	<a href="#">CC-VI</a>	<a href="#">CC-VI</a>
Function	Enable/Disable Function	YES	YES	YES	YES
	Count Copies	YES	YES	YES	YES
	Detect Paper Size	NO (Small only)	YES (Large/Small)	YES (Large/Small)	YES (Large/Small)
	Distinguish Color/Monochrome	YES	YES	YES	YES
Service Mode	CC-SPSW	YES	YES	YES	YES
	CC-EXT	NO	NO	NO	NO
	BWCL-DSP	NO	YES	YES	YES
	CONTROL	NO	YES	YES	YES
	MB-CCV	NO	YES	YES	YES
	PRJOB-CP	NO	YES	YES	YES
	B4-L-CNT	NO	YES	YES	YES
CARD-SW	NO	YES	YES	YES	
Note			Technical Publication TP09_431	Technical Publication TP08_431	

### 3 Connecting Hardware / Cable

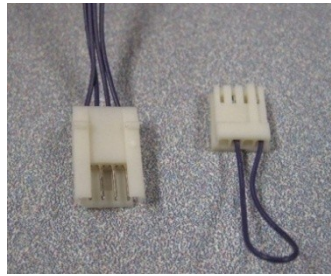
#### 3.1 imageRUNNER Copy Control Interface Cable (Item #7096A012AA)



#### Connector Shape



**[CT 4pin (Female)]**  
Connect to the Canon MFP device



**[EI 4pin (Male)]**  
Connect to the 3<sup>rd</sup> party external device

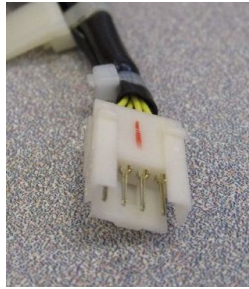
3.2 imageRUNNER Copy Control Interface Cable – K1 (Service Part #FM2-5958-000)



Connector Shape



**[CT 6pin (Female)]**  
Connect to the Canon  
MFP device



**[EI 4pin (Male)]**  
Connect to the 3<sup>rd</sup> party  
external device

### 3.3 Copy Control Interface Cable-A1 (Item #3726B002BA)



#### Connector Shape



**[CZ 7pin (Female)]**  
Connect to the Canon  
MFP device



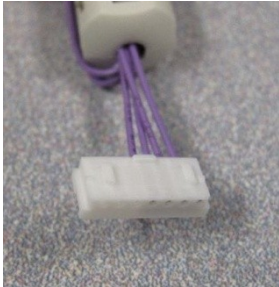
**[EI 4pin (Male)]**  
Connect to the 3<sup>rd</sup> party  
external device



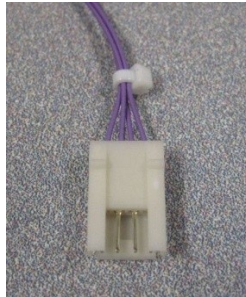
3.4 Copy Control Interface Kit-B1 (Item #4741B001AA)



Connector Shape

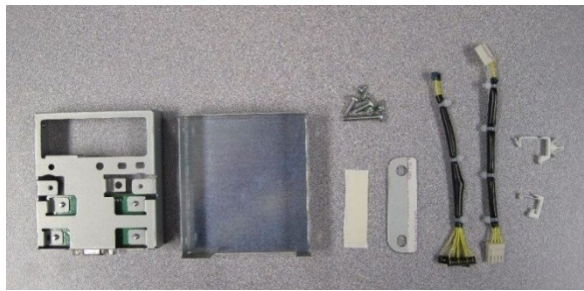


**[CT 7pin (Female)]**  
Connect to the Canon  
MFP device



**[EI 4pin (Male)]**  
Connect to the 3<sup>rd</sup> party  
external device

### 3.5 Port Connection Kit-A1 (Sales Item #2290B001AA)



#### Connector Shape



#### **[Mini Dsub 15pin (Female)]**

Connect to the 3<sup>rd</sup> party external device

3.6 Copy Control Interface Kit A1 (Sales Item #3726B001AA)



Connector Shape



**[CT 7pin]**

Connect to the Canon MFP device

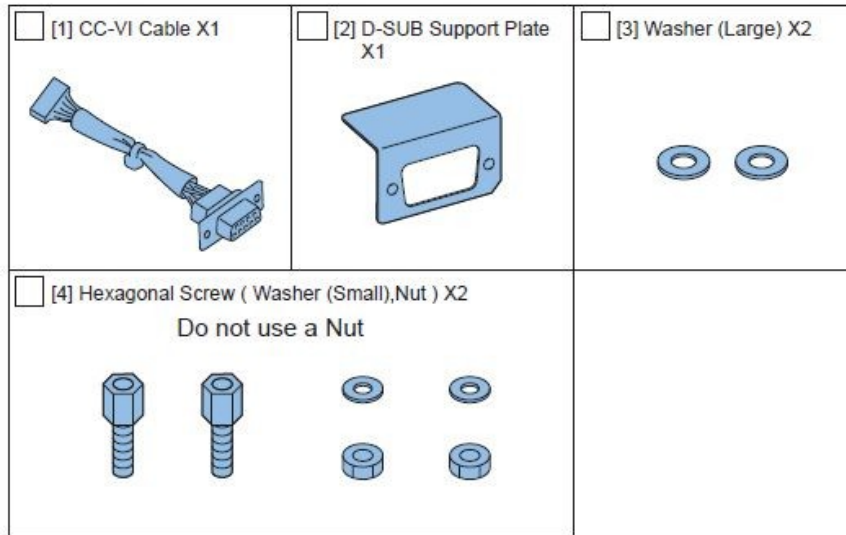


**[Dsub 9pin (Female)]**

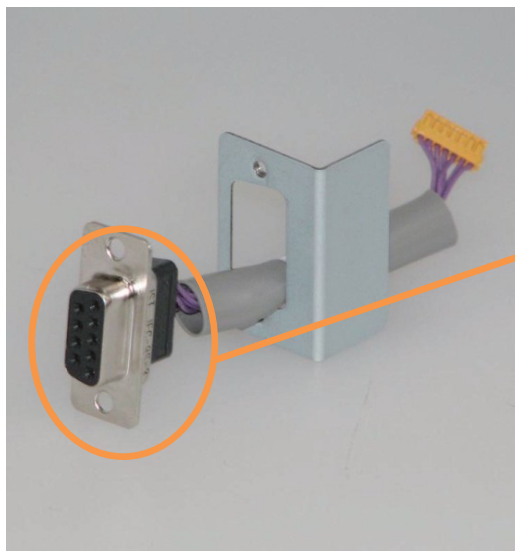
Connect to the 3<sup>rd</sup> party external device

3.7 Copy Control Interface Kit C1 (Sales Item #5145B001AA)

**Note:** The product associated with this item is available only from markets served by Canon Europe. Therefore, this item is available only from Canon Europe as well.



Connector Shape



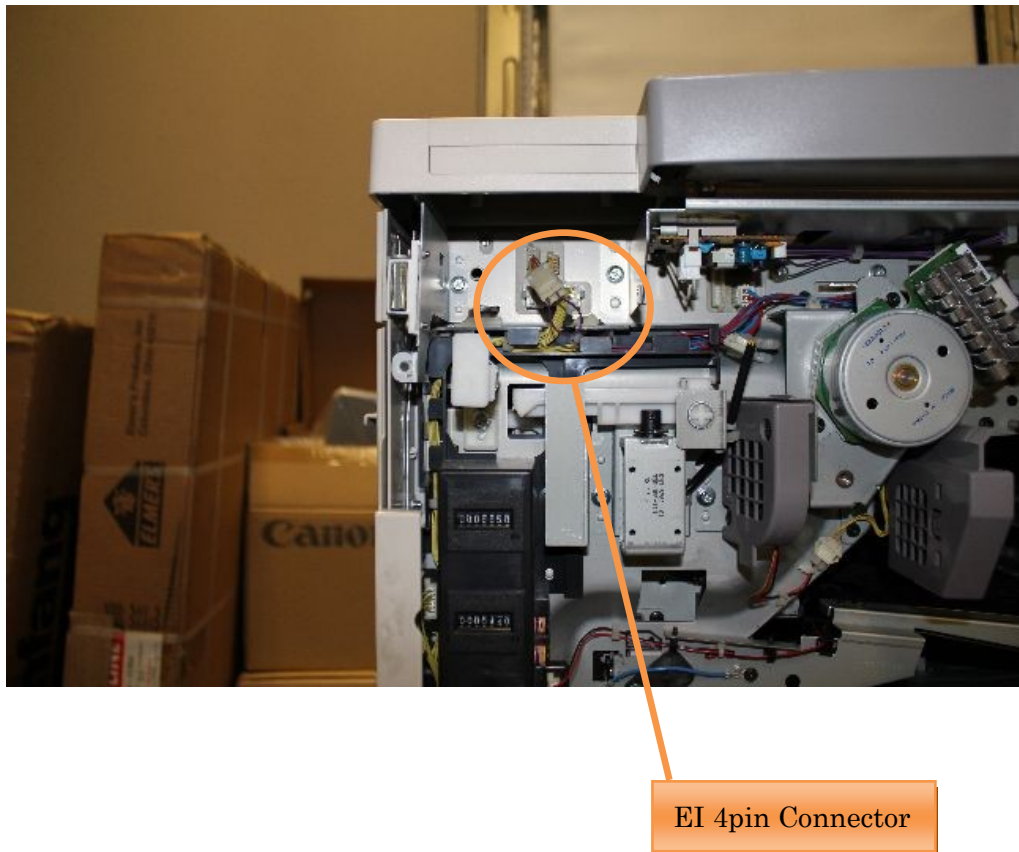
**[Dsub 9pin (Female)]**  
Connect to the 3<sup>rd</sup> party external device



## 4 Connector location

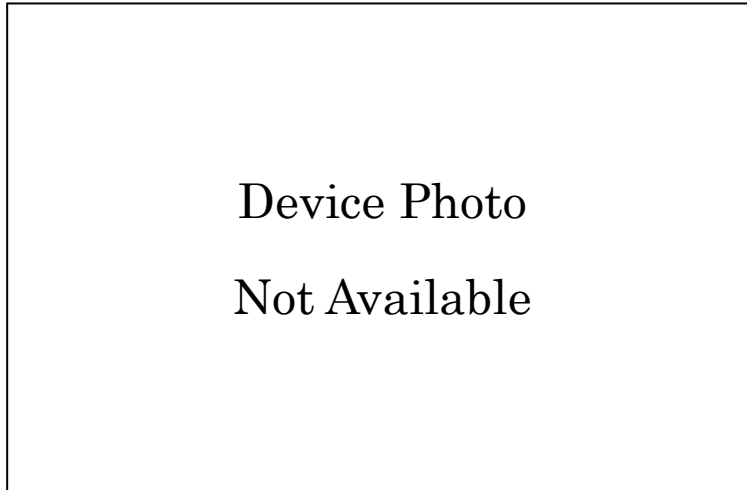
### 4.1 iR400S/iR400V/iR400N/iR330S/iR330N

Connect the external device to EI 4pin connector that is located under Front Panel - left side.



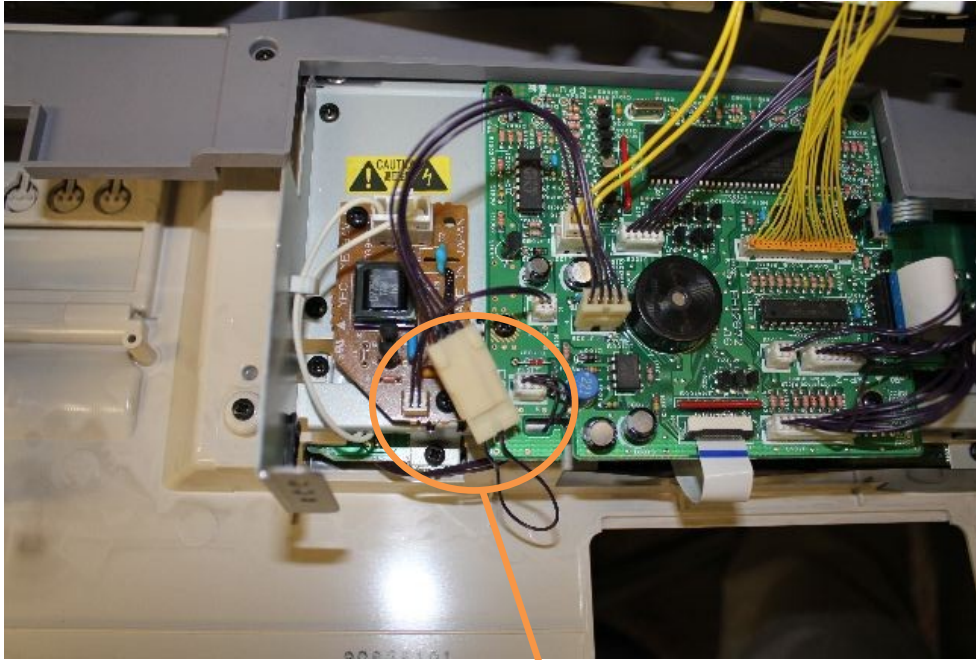
4.2 iR210S/iR210N/iR210E

Connect the external device to EI 4pin connector that is located inside the device.



4.3 iR600/iR600V/iR550/iR60

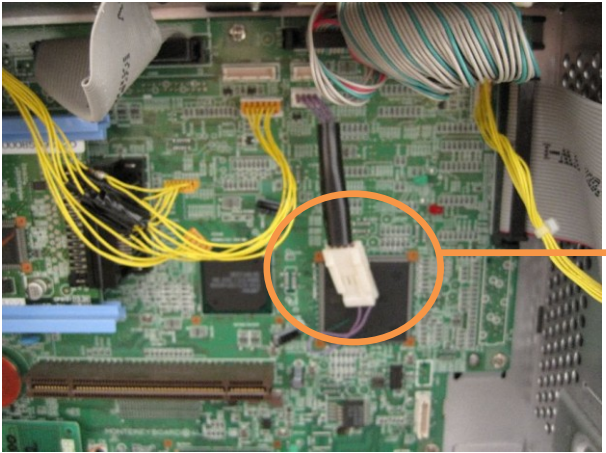
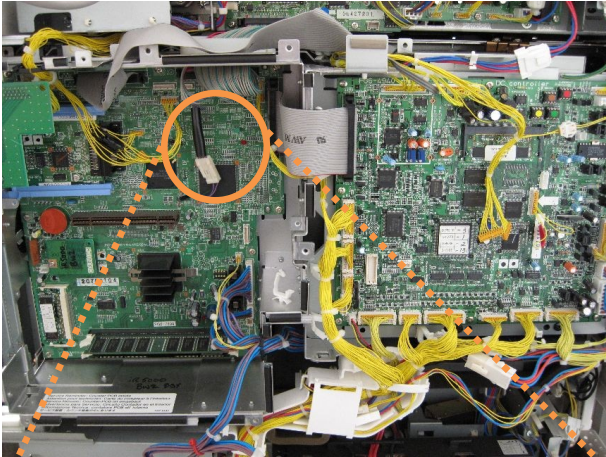
Connect the external device to EI 4pin connector that is located on Front Panel - left side.



EI 4pin Connector

4.4 iR6000/iR5000/iR5000i/iR5000V/iR6020/iR6020i/iR5020/iR5020i

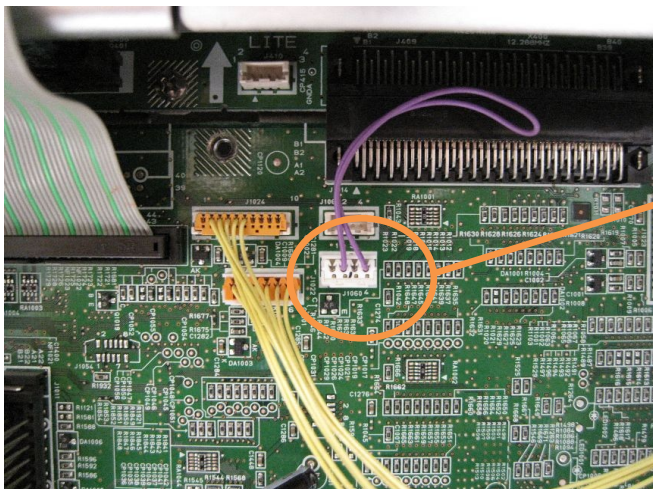
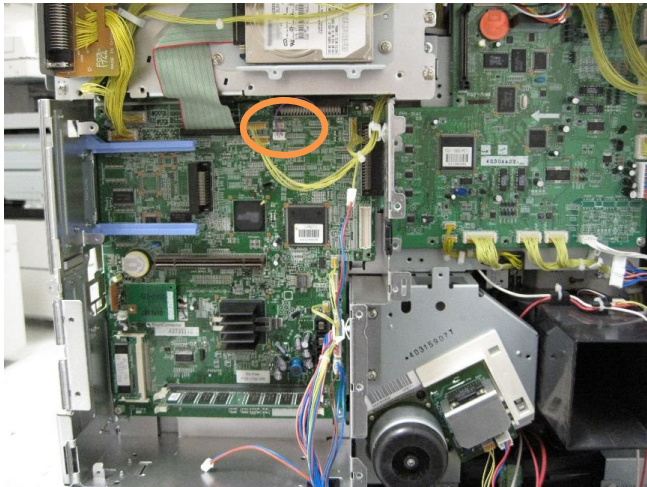
Connect the external device to EI 4pin connector that is located behind the back panel.



EI 4pin Connector

4.5 iR3300/iR3300i/iR2800/iR2200

This model requires imageRUNNER Copy Control Interface Cable (Item #7096A012AA) to connect with external device. Connect the cable to J1060 on the device PCB board.

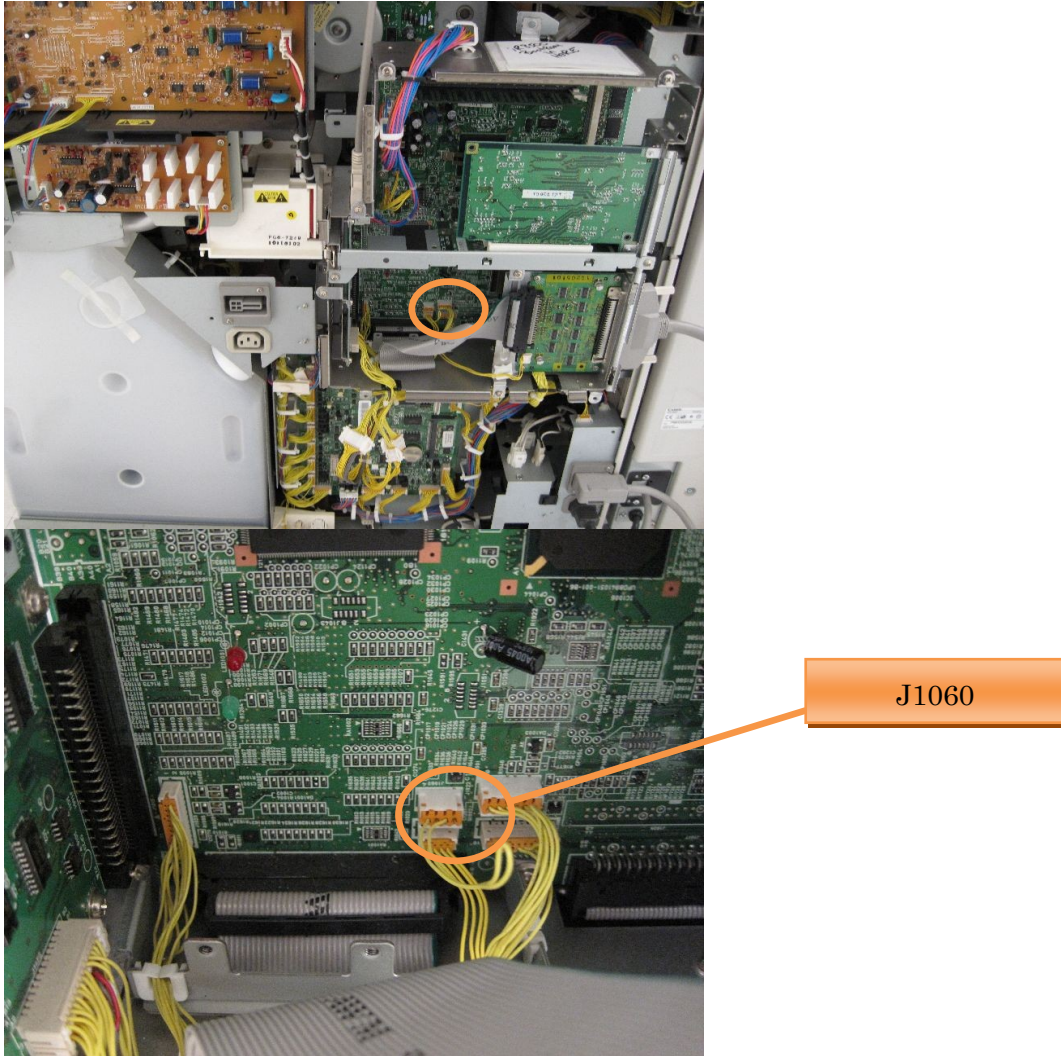


J1060



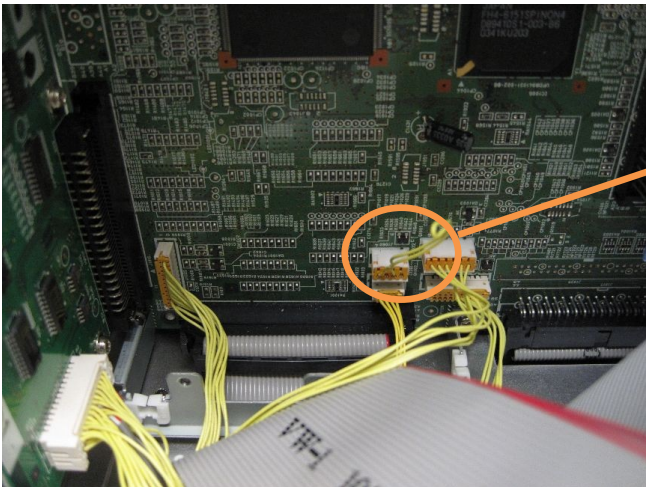
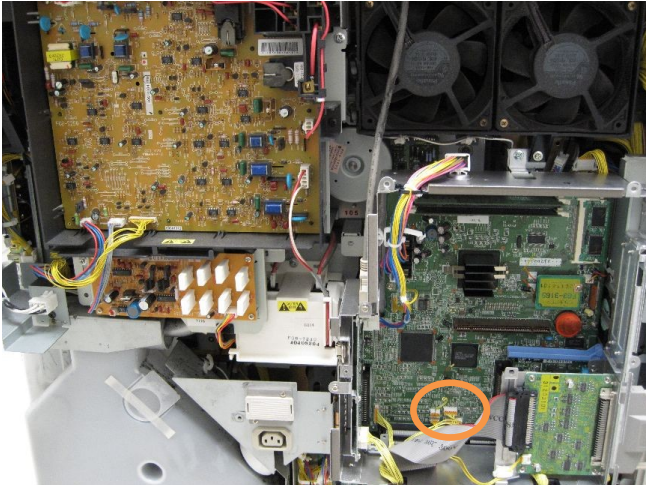
4.6 iR8500

This model requires imageRUNNER Copy Control Interface Cable (Item #7096A012AA) to connect with external device. Connect the cable to J1060 on the device PCB board.



4.7 iR105

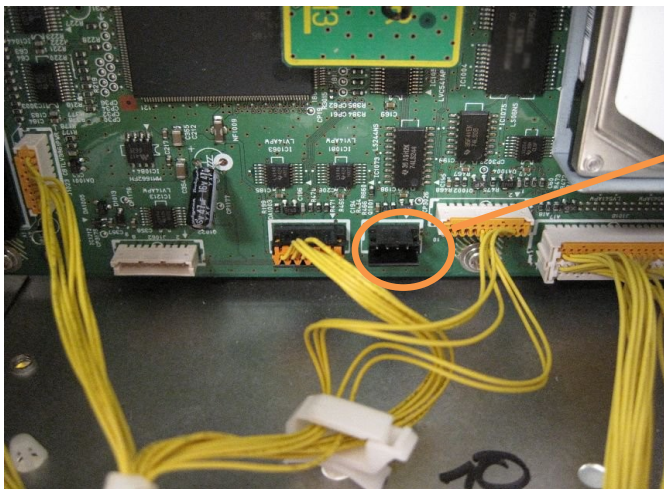
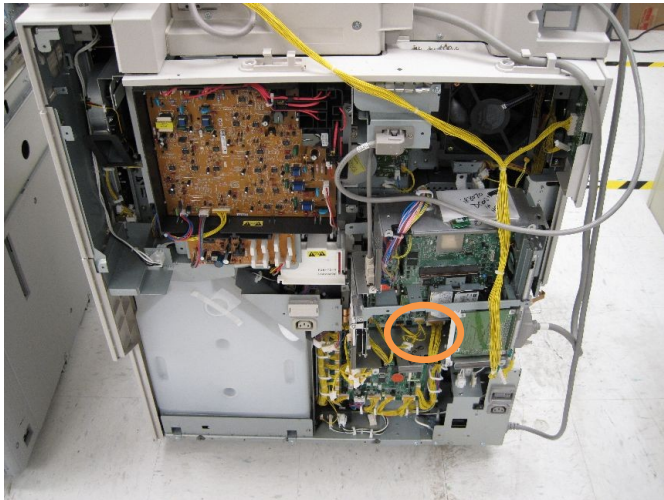
This model requires imageRUNNER Copy Control Interface Cable (Item #7096A012AA) to connect with external device. Connect the cable to J1060 on the device PCB board.



J1060

4.8 iR7200

This model requires imageRUNNER Copy Control Interface Cable (Item #7096A012AA) to connect with external device. Connect the cable to J1060 on the device PCB board.

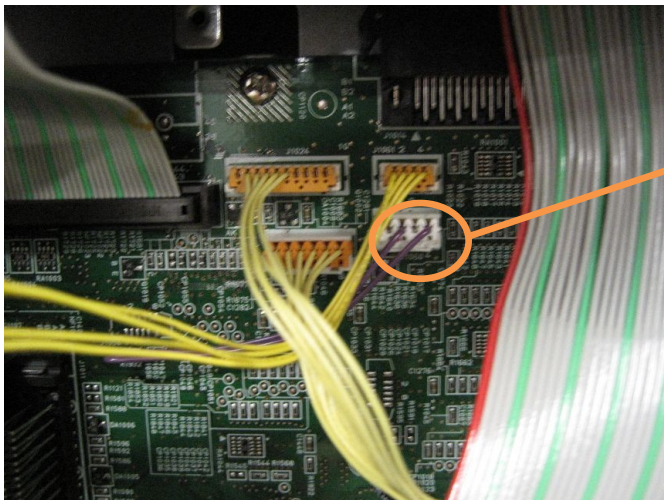
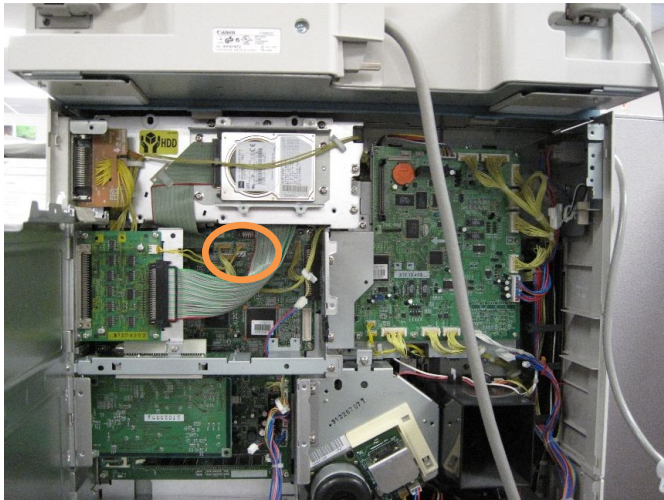


J1060



4.9 iR3320i/iR3320N/iR2220i/iR2220N

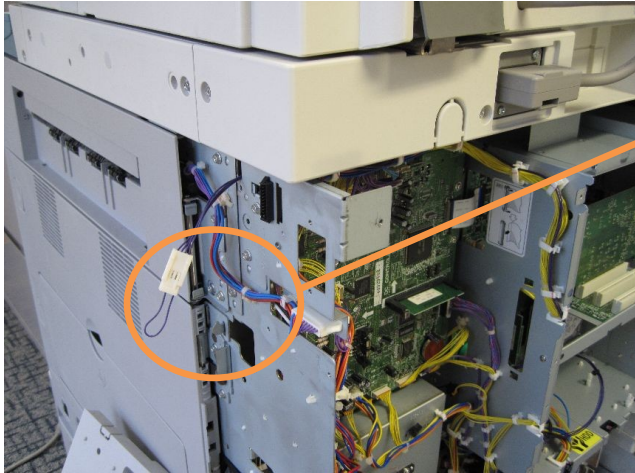
This model requires imageRUNNER Copy Control Interface Cable (Item #7096A012AA) to connect with external device. Connect the cable to J1060 on the device PCB board.



J1060

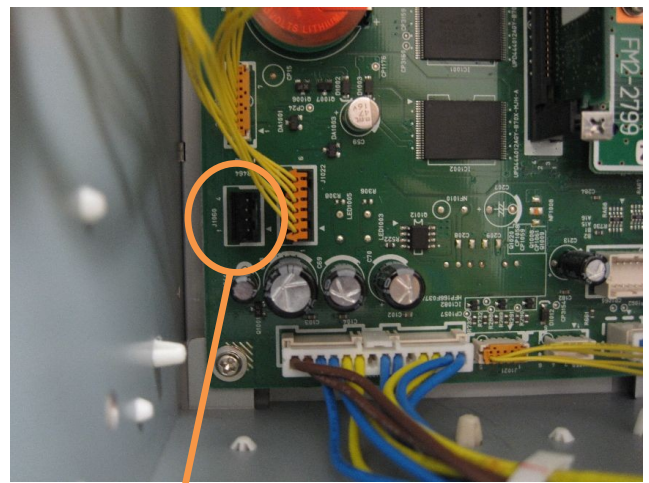
4.10 iR4570/iR3570/iR3570G/iR2870/iR2270/iR2270G/iR3530/iR2830/iR2230

Connect the external device to EI 4pin connector that is located behind the back panel.



EI 4pin Connector

If the device didn't come with EI 4pin connector (that happens when the device's serial number was older than particular number), prepare an imageRUNNER Copy Control Interface Cable (Item #7096A012AA) then connect the cable to J1060 on the device PCB board.



J1060

4.11 iR6570/iR5570/iR5070

Connect the external device to EI 4pin connector that is located behind the side panel.

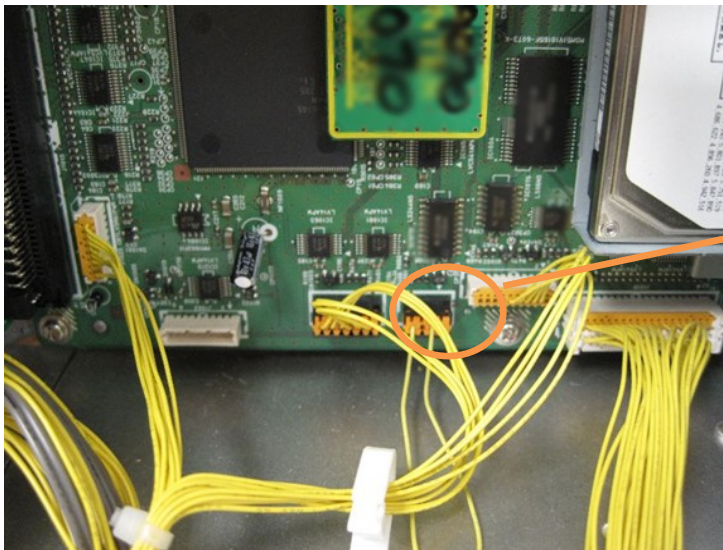
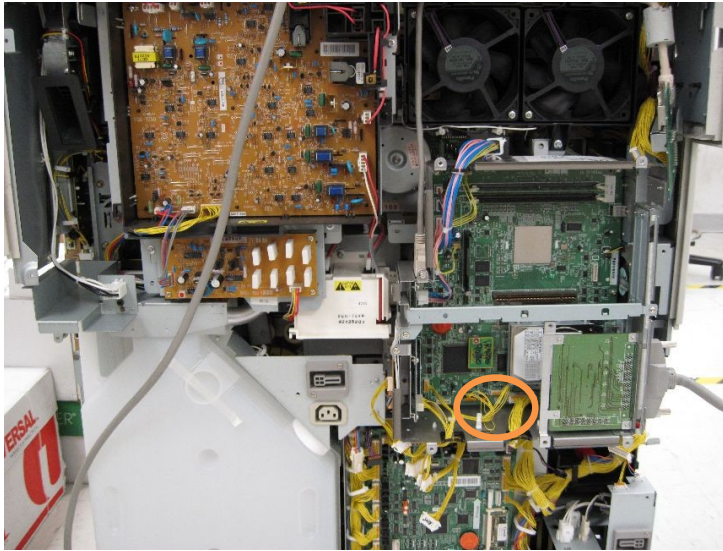


EI 4pin Connector



4.12 iR85/iR85+/iR105+/iR9070/iR8070

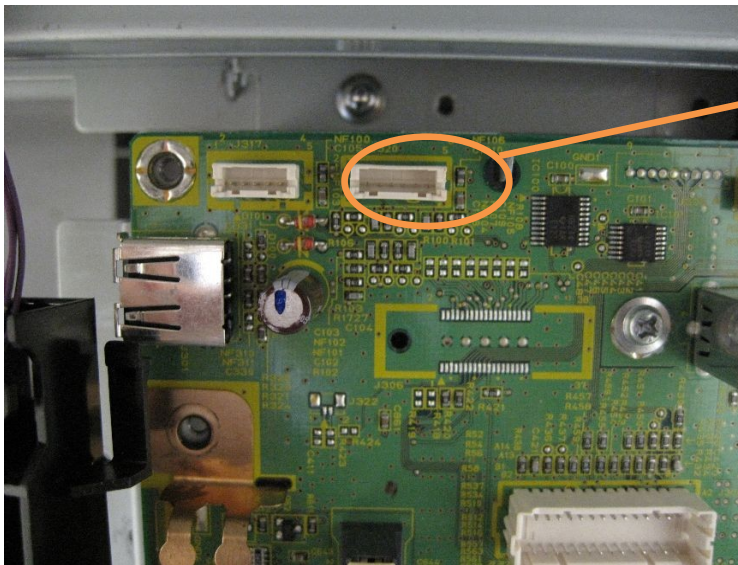
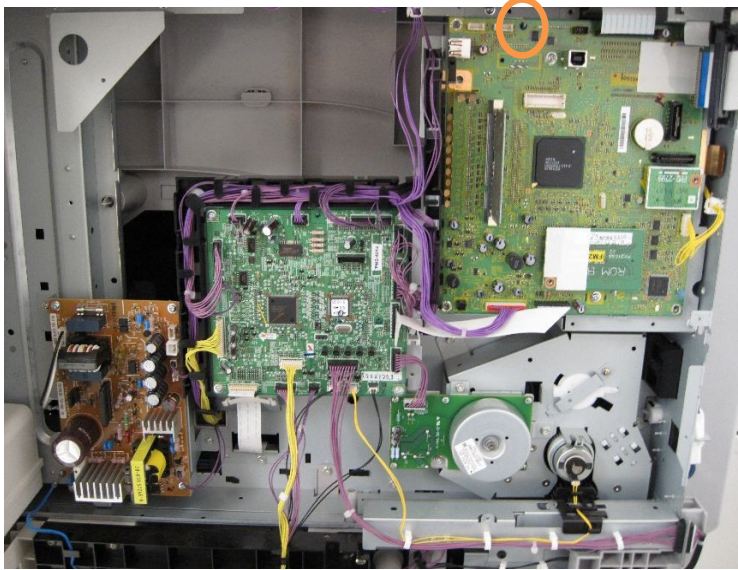
This model requires imageRUNNER Copy Control Interface Cable (Item #7096A012AA) to connect with external device. Connect the cable to J1060 on the device PCB board.



J1060

4.13 iR2020/iR2020i/iR2016/iR2016i

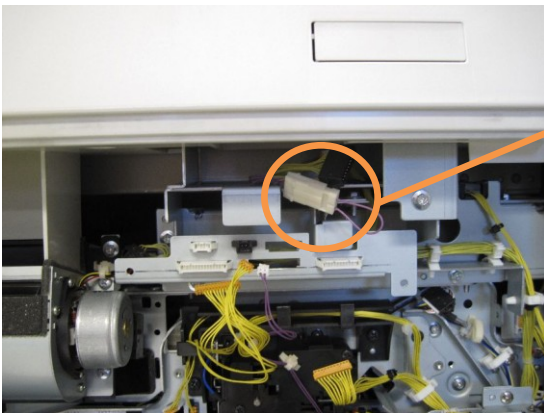
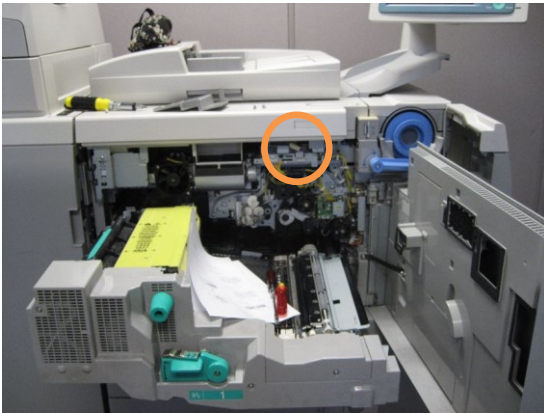
This model requires imageRUNNER Copy Control Interface Cable – K1 (Service Part #FM2-5958-000) to connect with external device. Connect the cable to J320 on the device PCB board.



J320

4.14 iR7105/iR7095/iR7095 Printer/iR7086

Connect the external device to EI 4pin connector that is located behind the front cover.

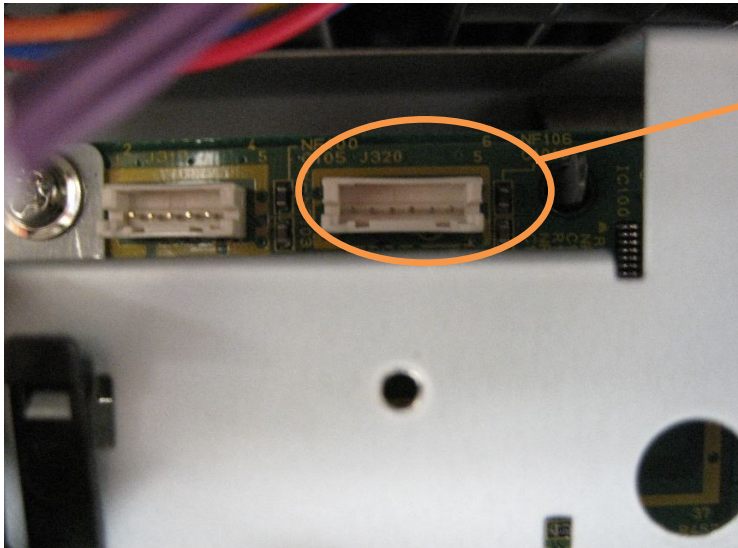
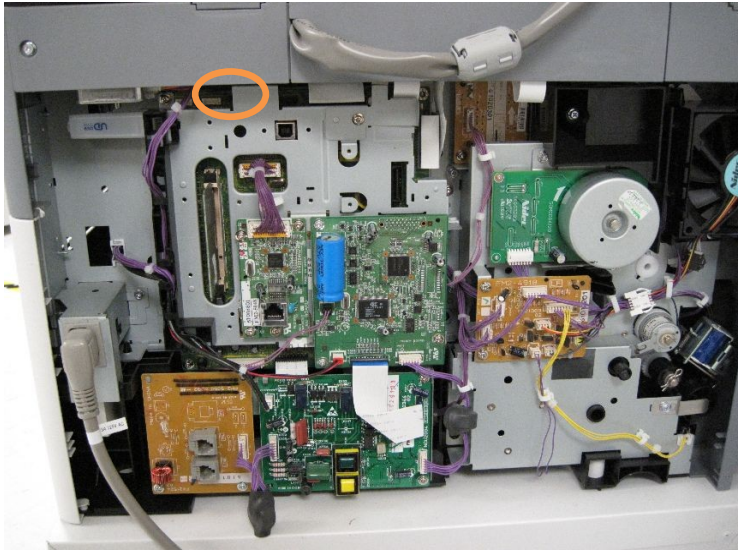


EI 4pin Connector



4.15 iR1025/iR1025N/iR1025iF/iR1023/iR1023N/iR1023iF

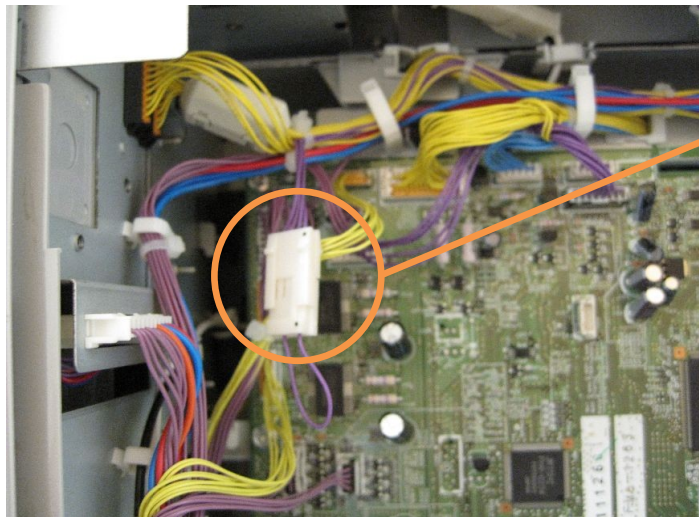
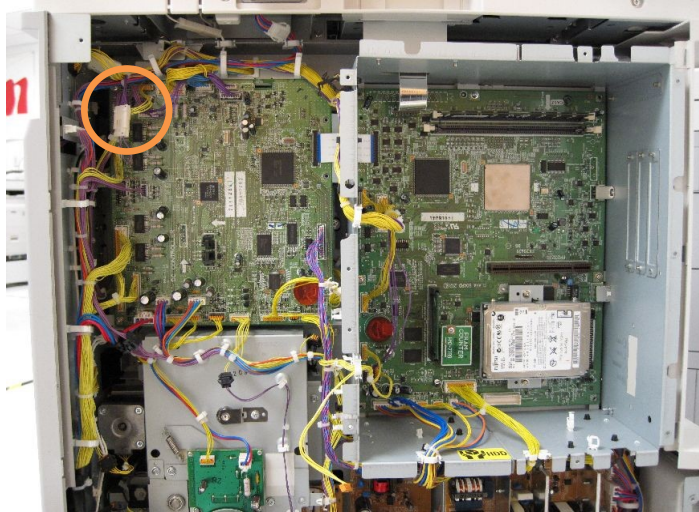
This model requires imageRUNNER Copy Control Interface Cable – K1 (Service Part #FM2-5958-000) to connect with external device. Connect the cable to J320 on the device PCB board.



J320

4.16 iR3045/iR3035/iR3030/iR3025

Connect the external device to EI 4pin connector that is located behind the back panel.



EI 4pin Connector



4.17 iR5075/iR5065/iR5055/iR5050

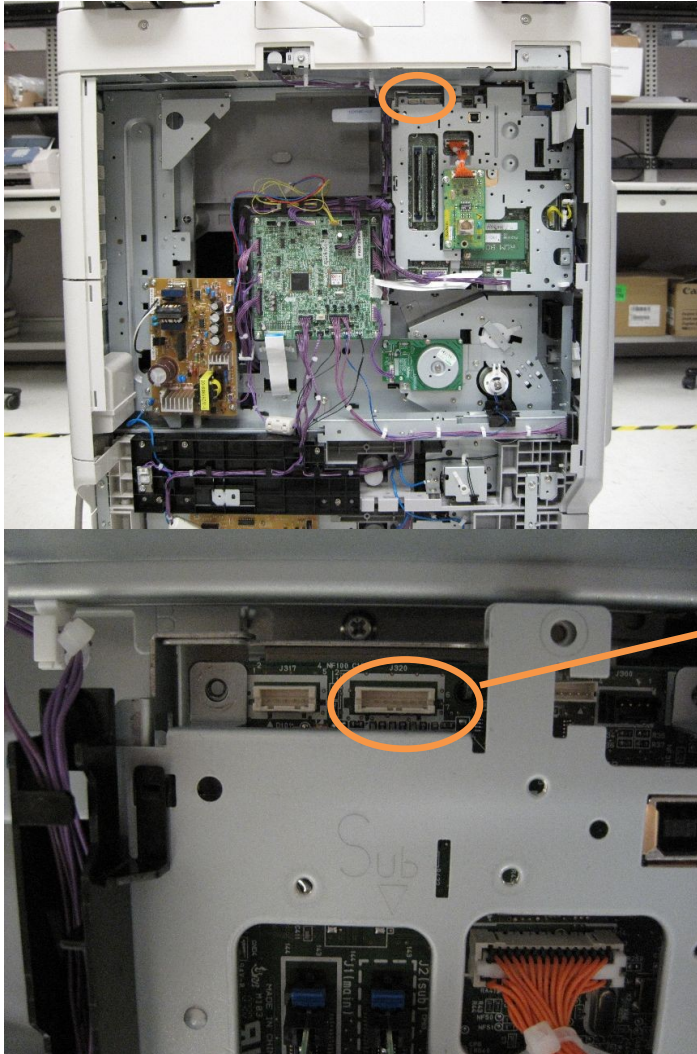
Connect the external device to EI 4pin connector that is located behind the side panel.



EI 4pin Connector

4.18 iR2030i/iR2025i/iR2022i/iR2022i/iR2018i/iR2018i

This model requires imageRUNNER Copy Control Interface Cable – A1 (Item #3726B002BA) to connect with external device. Connect the cable to J320 on the device PCB board.



J320

4.19 iR3245/iR3245i/iR3235/iR3235i/iR3230/iR3225

Connect the external device to EI 4pin connector that is located behind the side panel.

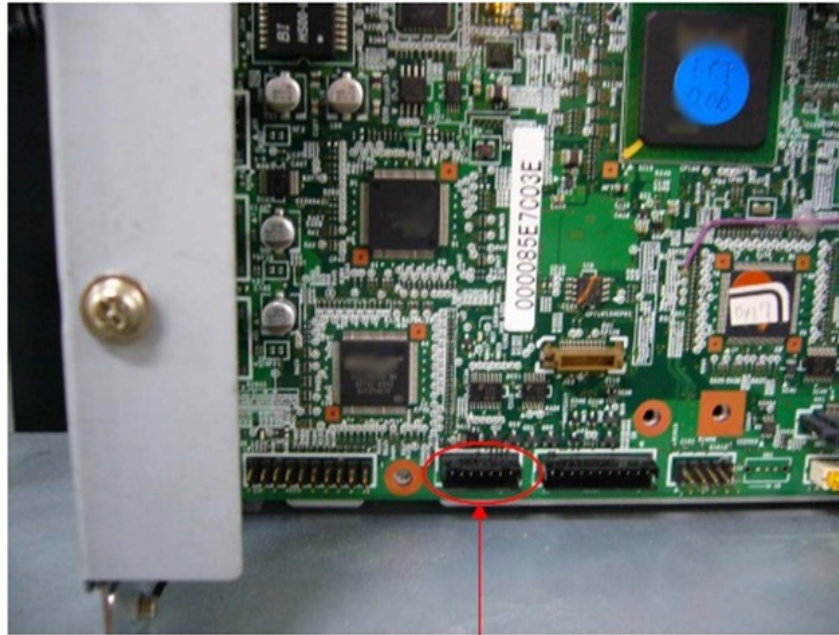
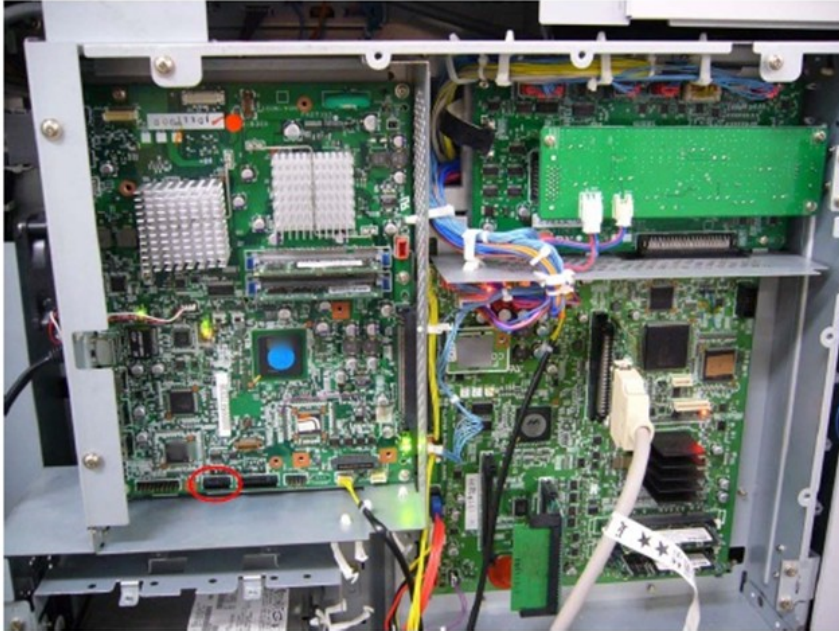


EI 4pin Connector



4.20 iPR1135/iPR1125/iPR1110

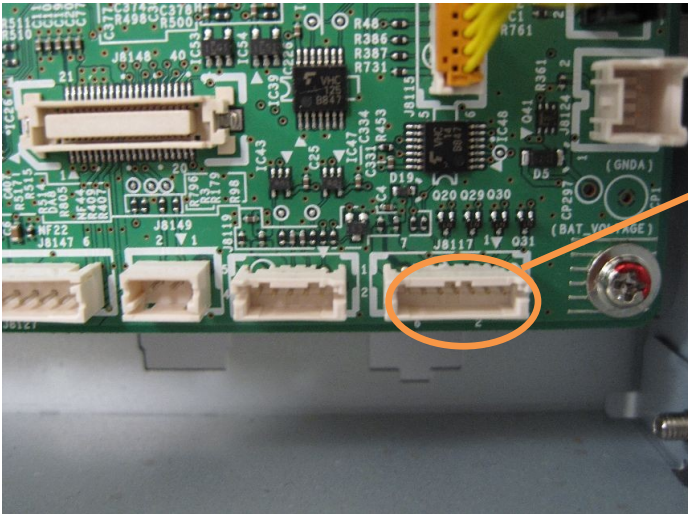
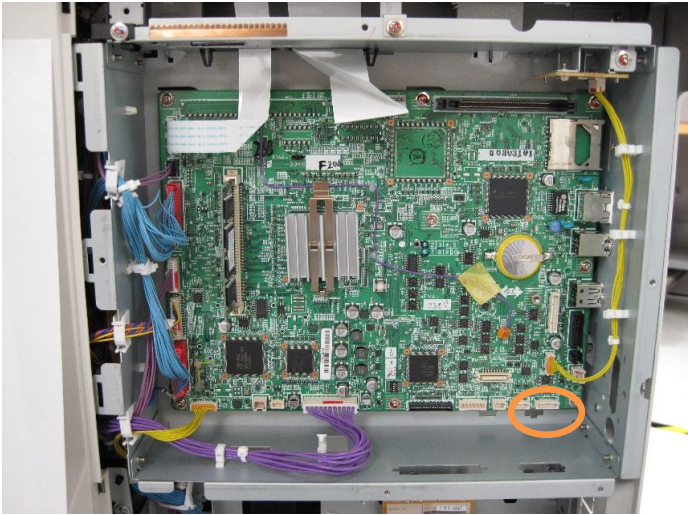
This model requires imageRUNNER Copy Control Interface Kit – B1 (Item #4741B001AA) to connect with external device. Connect the cable to J2021 on the device PCB board.



J2021

4.21 iR2545/iR2545i/iR2535/iR2535i/iR2530/iR2525

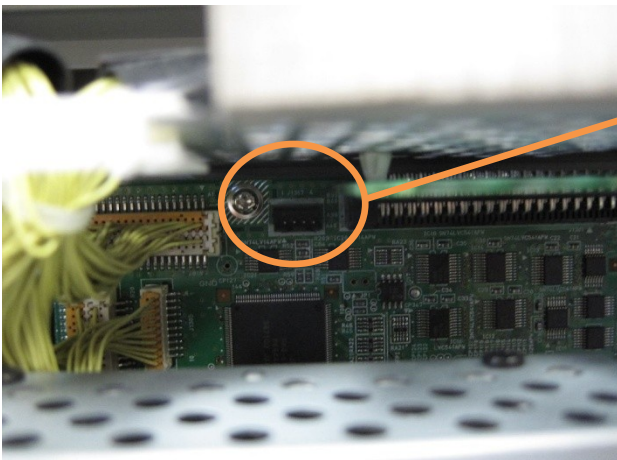
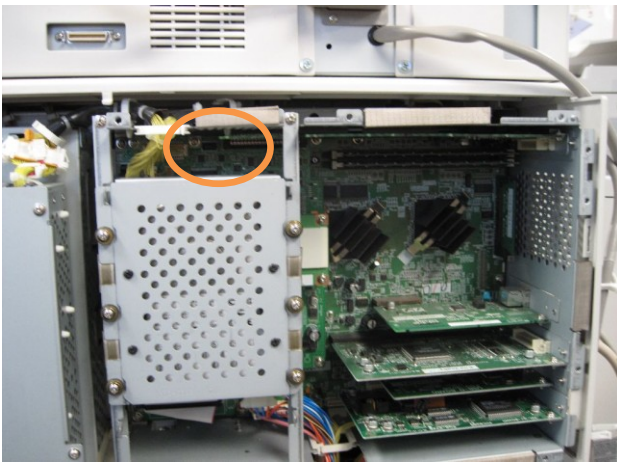
This model requires imageRUNNER Copy Control Interface Cable – A1 (Item #3726B002BA) to connect with external device. Connect the cable to J8117 on the device PCB board.



J8117

4.22 iR C3200/iR C3220/iR C2620/iR C2620G

This model requires imageRUNNER Copy Control Interface Cable (Item #7096A012AA) to connect with external device. Connect the cable to J1317 on the device PCB board.

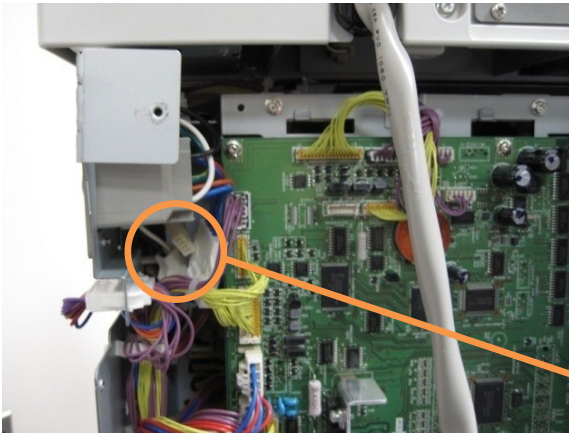


J1317

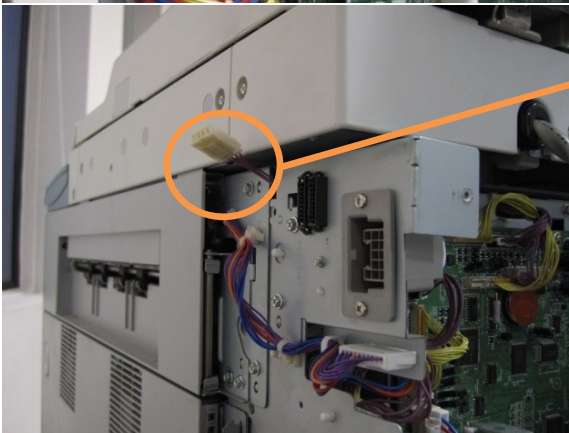


4.23 iR C3100/iR C3100N/iR C3170U/iR C3170i

Connect the external device to EI 4pin connector that is located behind the back panel.



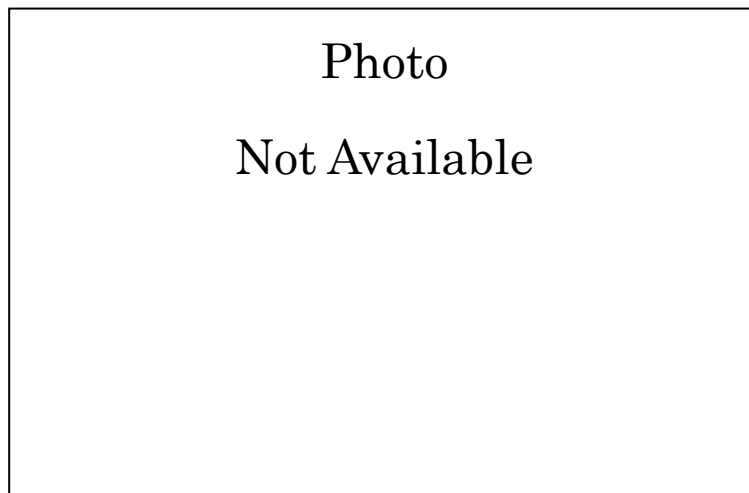
EI 4pin Connector



#### 4.24 iR C6800/iR C5800

Connect the external device to EI 4pin connector that is located inside the device.

If the device didn't come with EI 4pin connector (that happens when the device's serial number was older than particular number), prepare an imageRUNNER Copy Control Interface Cable (Item #7096A012AA) then connect the cable to J1205 on the device PCB board.





4.25 iRC 5068/iRC 5058/iRC 5870U/iRC6870U

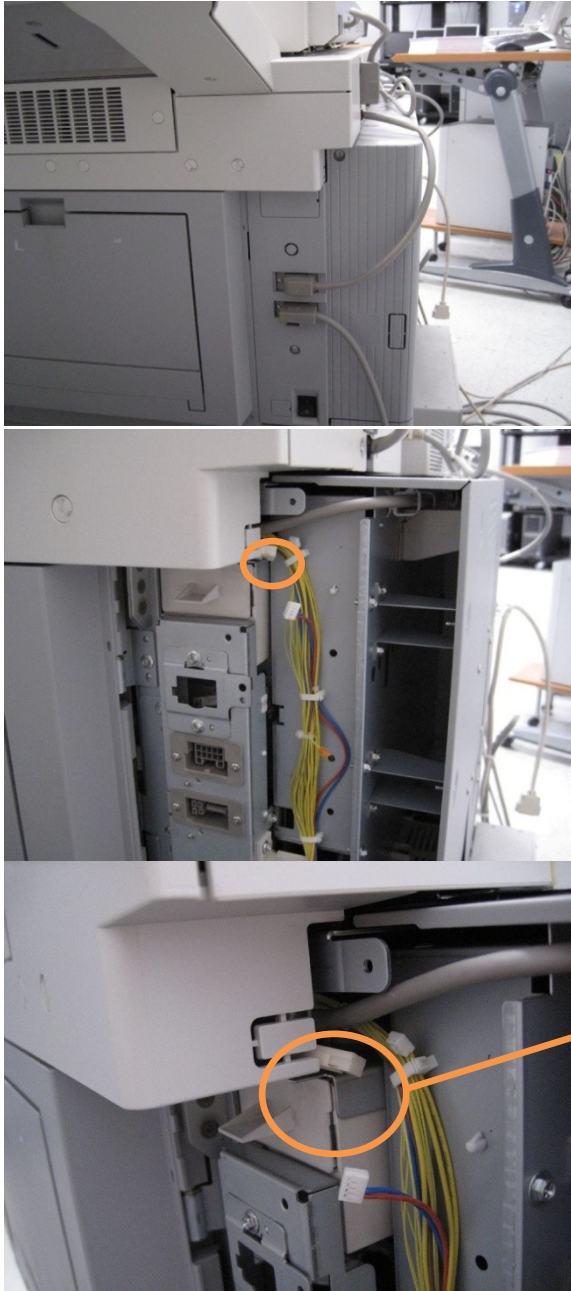
Connect the external device to EI 4pin connector that is located behind the side panel.



EI 4pin Connector

#### 4.26 iPR C1/iPR C1+

Connect the external device to EI 4pin connector that is located behind the side panel.

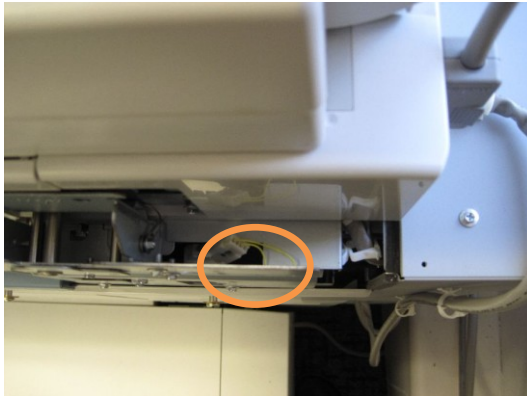


EI 4pin Connector

4.27 iR C5185/iR C5185i/iR C5180/iR C5180i/iR C4580/iR C4580i/iR C4080/iR C4080i

4.27.1 Without Port Connection Kit – A1

Connect the external device to EI 4pin connector that is located behind the side panel.



EI 4pin Connector



4.27.2 With Port Connection Kit – A1

Install Port Connection Kit – A1 then connect the external device to mini Dsub 15pin connector.



Port Connection  
Kit – A1



Mini Dsub 15 pin  
Connector

(\*) Refer “[iR C5180-4580 Series - Port Connection A1 Device Installation Instructions.pdf](#)” for the installation procedure.



4.28 iR C3480/iR C3480i/iR C3380/iR C3380i/iR C3080/iR C3080i/iR C2880/iR C2880i/iR C2550

4.28.1 Without Port Connection Kit – A1

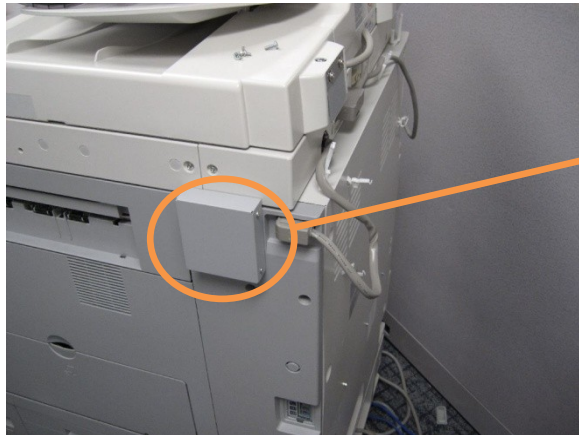
Connect the external device to EI 4pin connector that is located behind the back panel.



EI 4pin Connector

4.28.2 With Port Connection Kit – A1

Install Port Connection Kit – A1 then connect the external device to mini Dsub 15pin connector.



Port Connection  
Kit – A1

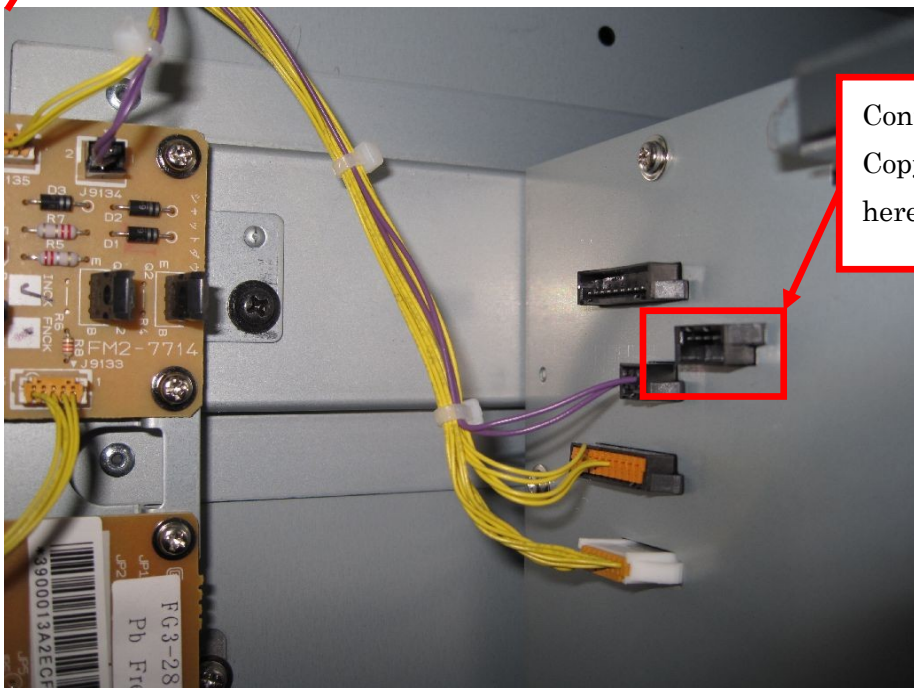
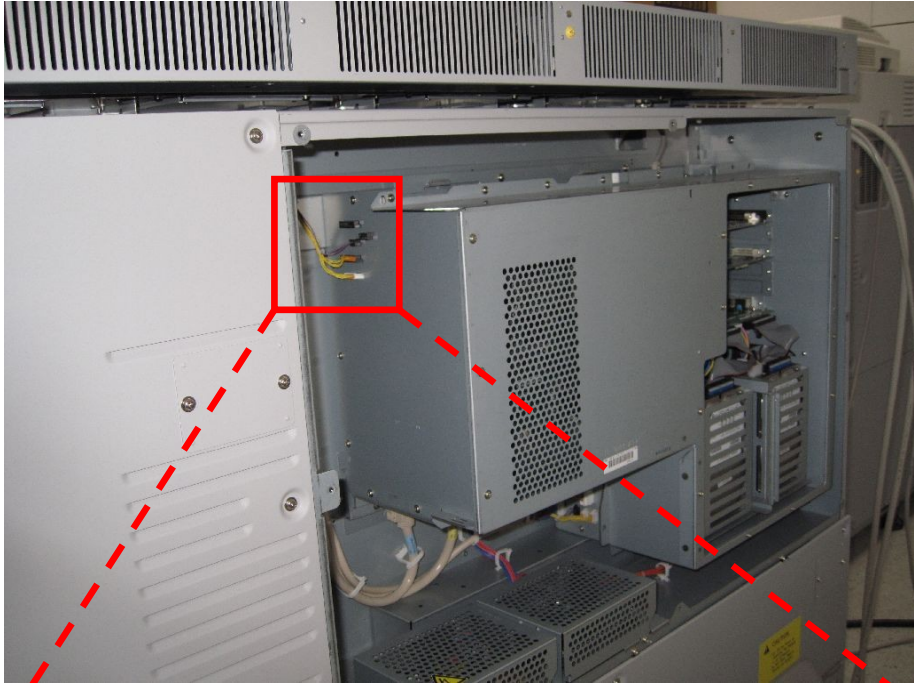


Mini Dsub 15 pin  
Connector

(\*) Refer “[iR C3380-2880 Series - Port Connection A1 Device Installation Instructions.pdf](#)” for the installation procedure.

4.29 iPR C7000/7010VP/iPR C6000VP/iPR C6000

This model requires imageRUNNER Copy Control Interface Cable (Item #7096A012AA) to connect with external device. Connect the cable to the connector shown below.



Connect "imageRUNNER Copy Control Interface Cable" here

4.30 iR C1022/iR C1022i/C1030/C1030iF

CC-VI CZ 7pin Connector is located on the right side of the device. But no connection cable is provided from Canon...



Port cover. Remove single screw for access. Remove knockout to route cables.



CC-VI 7-pin connection

CZ 7pin  
Connector



4.31 iR-ADV C5000 Series, iR-ADV C7000 Series, iR-ADV C9000 Series, iR-ADV 8000 Series, iR-ADV 6000 Series, iR-ADV C2000 Series, iR-ADV 4000 Series

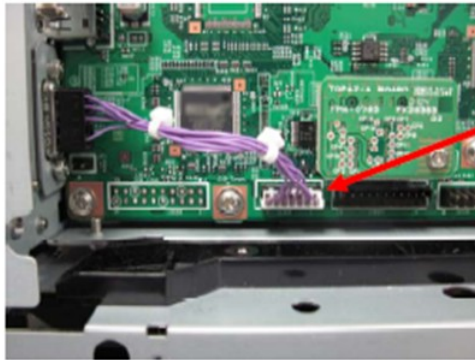
Models Supported:

iR-ADV C5051/5045/5035/5030; iR-ADV C7065/7055; iR-ADV C9075 PRO/9065 PR; iR-ADV 8105/8095/8085; iR-ADV 6075/6065/6055; iR-ADV C2030/2020); iR-ADV 4051/4045/4035/4025

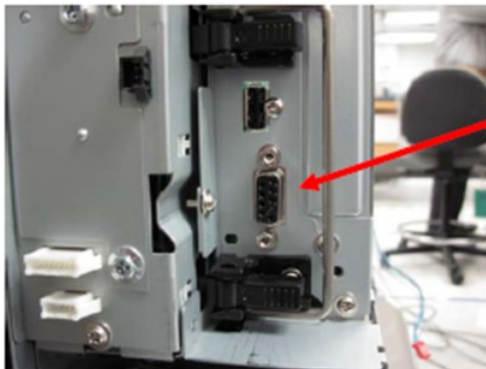
Install Copy Control Interface Kit – A1 then connect the external device to Dsub 9pin connector.



Copy Control Interface Kit A1



J1026

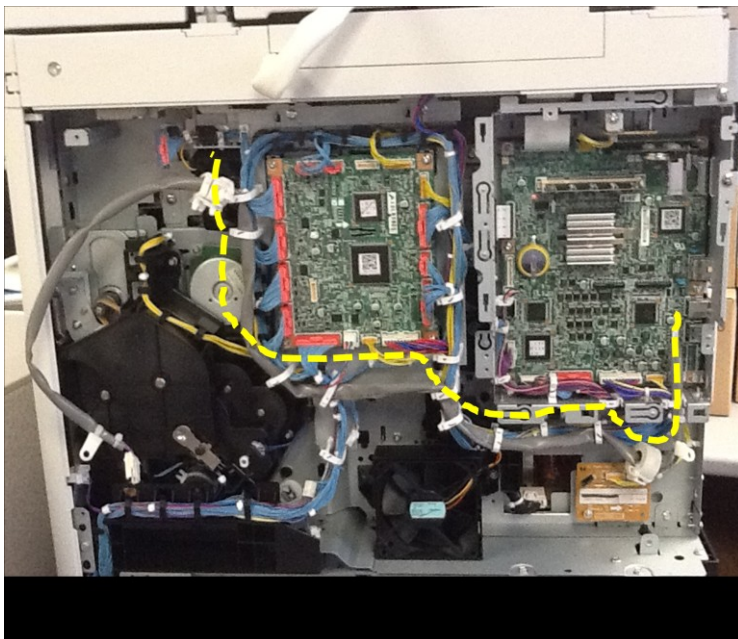
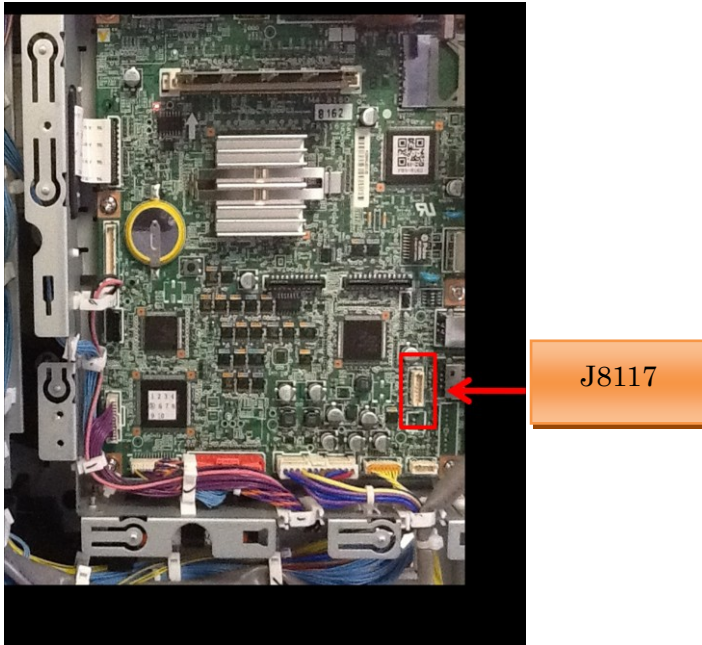


Connection to the 3<sup>rd</sup> party device

DSub 9pin Connector

4.32 imageRUNNER 1730/1730iF/1740/1740iF/1750/1750iF

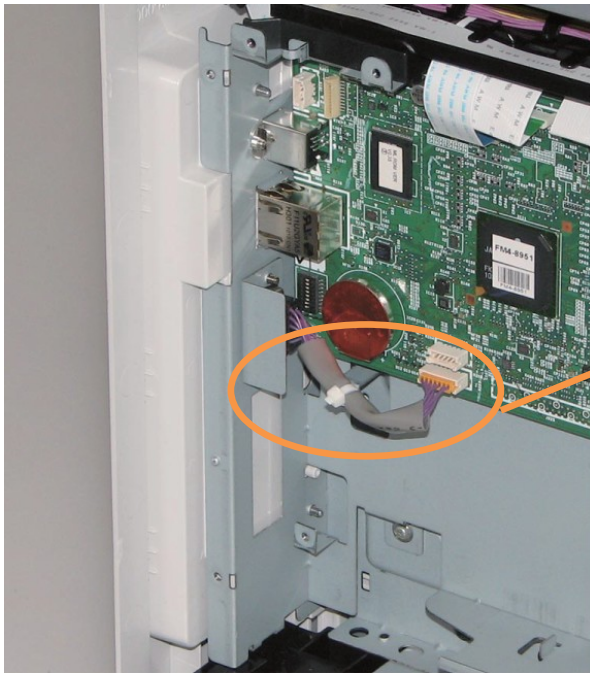
This model requires imageRUNNER Copy Control Interface Cable – A1 (Item #3726B002BA) to connect with external device. Connect the cable to J8117 on the device PCB board (Figure 1). Route the Copy Control Interface Cable-A1 according to the yellow line in Figure 2.



#### 4.33 imageRUNNER 1133

Install Copy Control Interface Kit – C1 then connect the external device to Dsub 9pin connector.

**Note:** The imageRUNNER 1133 and Copy Control Interface Kit – C1 are available only in markets served by Canon Europe

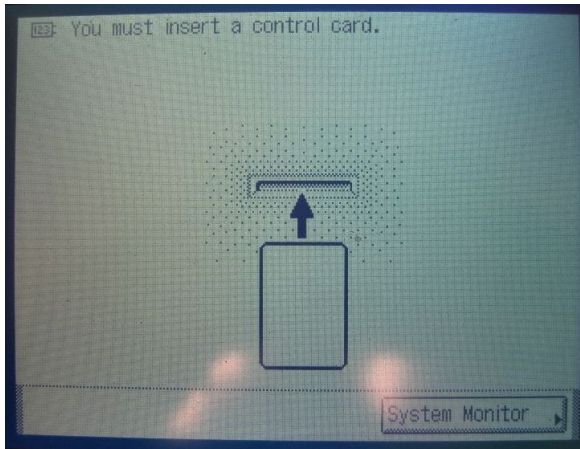


Copy Control Interface  
Kit-C1

## 5 Standby Screen

This section shows sample images of standby screen.

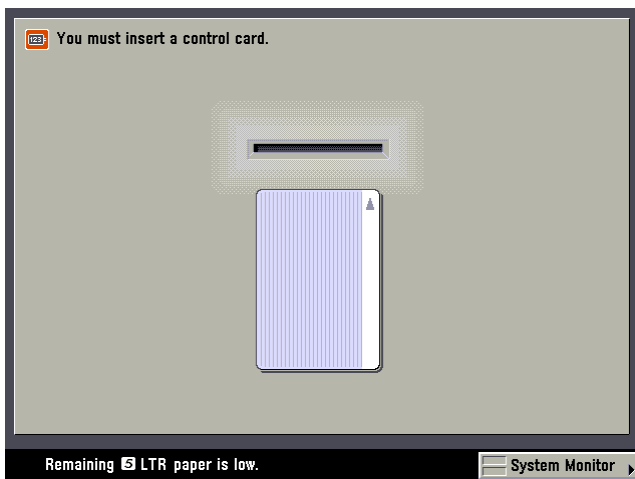
- B/W LCD Panel Model



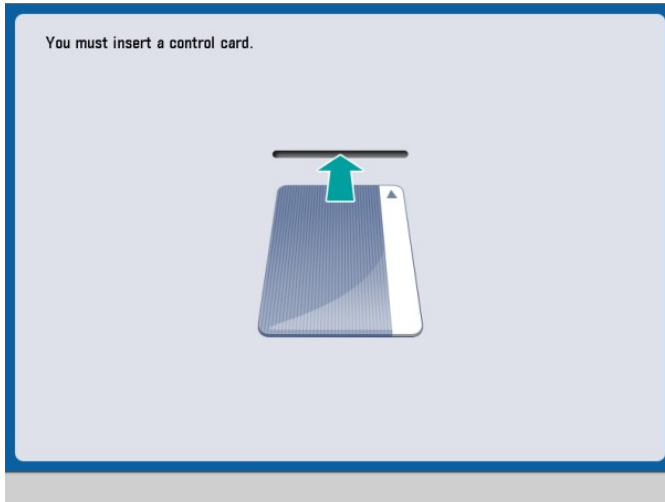
- Two-lines LCD Panel Model



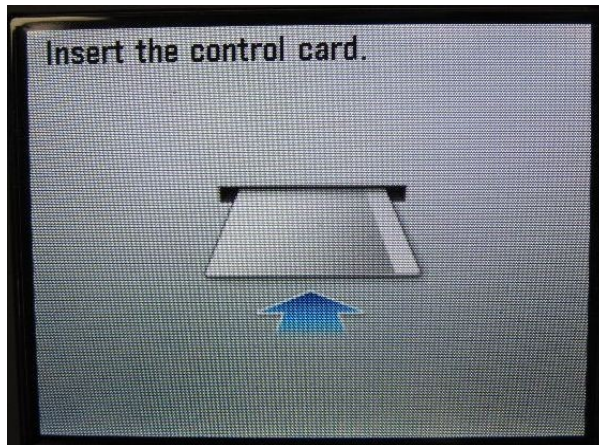
- imageRUNNER/imagePRESS Color Panel Model



- imageRUNNER ADVANCE Model



- Compact Color LCD Panel Model





## 6 Service Mode

### 6.1 CC-SPSW

Item	Level 2 > COPIER > Option > ACC > CC-SPSW (* For low-end (Nexus/NCA) model : #ACC>CC-SPSW
Content	CC-IF switch (* Set other than "0" to use CC-IF.)
Setting Value	[NADA BW model / Nexus/NCA] 0: CC-IF mode OFF [default] 1: CC-IF mode ON (*note*) For (Nexus/NCA) model, "#ACC>COIN" should be set to "1" too.[NADA/XPT Color model] 0: CC-IF mode OFF [default] 1: CC-IF mode ON (Speed priority) 2: CC-IF mode ON (Restrain Overrun) *Make the print speed slower than normal to restrain overrun.

### 6.2 CC-EXT

Item	Level 1 > COPIER > OPTION > ACC > CC-EXT
Content	Port Connection Kit-A1 switch (* Set "1" to use Port Connection Kit-A1) (* This is only for NADA/XPT model.
Setting Value	0: OFF [default] 1: ON

### 6.3 BWCL-DSP

Item	Level 2 > COPIER > OPTION > USER > BWCL-DSP
Content	Setting whether to display Color Mode Select screen (* This is only for NADA/XPT model.
Setting Value	0: OFF (Not display) [default] 1: ON (Display the Color Mode Select screen)

### 6.4 CONTROL

Item	Level 1 > COPIER > OPTION > USER > CONTROL (* For low-end (Nexus/NCA) model : #ACC>CONTROL
Content	Setting whether to control PDL Print
Setting Value	0: OFF (Not output paper feed pulse. Not control enable/disable) [default]

Value	<p>1: ON (Output paper feed pulse. Control enable/disable) ... for (NADA/XPT) model</p> <p>2: ON (Output paper feed pulse. Control enable/disable) ... for (NCA) model</p> <p>(*note*) If this is set to “1” at low-end (Nexus/NCA) model, it controls enable/disable, but no pulse is output for PDL print.</p>
-------	--

6.5 MB-CCV

Item	Level 2 > COPIER > OPTION > USER > MB-CCV
Content	<p>Setting whether to control BOX Print from Remote UI.</p> <p>(*) This is only for NADA/XPT model.</p>
Setting Value	<p>0: OFF (Not output paper feed pulse. Not control enable/disable)</p> <p>1: ON (Output paper feed pulse. Control enable/disable) [default]</p> <p>* Box Print from Local UI is always controlled (ON).</p>

6.6 PRJOB-CP

Item	Level 2 > COPIER > OPTION > USER > PRJOB-CP
Content	<p>Setting whether to control Fax Receive Print/Report Print.</p> <p>(*) This is only for NADA/XPT model.</p>
Setting value	<p>0: OFF (Not output paper feed pulse. Not control enable/disable) [default]</p> <p>1: ON (Output paper feed pulse. Not control enable/disable)</p>

6.7 B4-L-CNT

Item	<p>Level 1 &gt; COPIER &gt; OPTION &gt; USER &gt; B4-L-CNT</p> <p>(*) For low-end (Nexus/NCA) model : #SSSW&gt; SW33 Bit 0 00000000 00000001 ←The right most bit</p>
Content	Setting to select Large or Small size for B4
Setting Value	<p>0: Small [default]</p> <p>1: Large</p>

6.8 CARD-SW

Item	Level 1 > COPIER > OPTION > ACC > CARD-SW
Content	<p>Setting for the words in the standby screen</p> <p>(*) This is only for NADA/XPT model.</p>



Setting Value	0: "You must insert a control card." [default] 1: cannot be set 2: cannot be set 3: "Insert a card."  (* Following devices always display "Insert a card" regardless the service mode setting. iR-ADV C5051/ C5045/ C5035/ C5030 : Version 43.04 or later iR-ADV C9075PRO/ C9065PRO/ C7065/ C7055: Version 43.04 or later
------------------	--

## 7 Appendix 1

### 7.1 Double Pulse

(\* )This information is for CUSA internal use only

Following devices support “Double Pulse”.

- iR5075/iR5065/iR5055/iR5050
- iR6570/iR5570/iR5070

If a second copy pulse is detected immediately after the first pulse (within 30ms or 100 ms gap between the pulses, depend on MFP Device settings), it will be considered as a “Double-Pulse”. A double-pulse means a large copy count (both pulses equal one count).

To activate “Double Pulse” below service mode setting is needed.

Item	Level 1 > COPIER > OPTION > ACC > CCV2CT
Content	Double Pulse switch (* Set other than “0” to use Double Pulse.)
Setting Value	0: OFF [default] 1: ON (Pulse gap :100ms) 2: ON (Pulse gap :30ms)

## 7.2 Use Send function Without Unlocking the Canon MFP device

Once CC-IF is turned ON, the Canon MFP device is locked and displays the standby screen on the UI panel. The Canon MFP's functions (Copy,Send,Mail Box,etc) are not accessible until the 3<sup>rd</sup> party control terminal unlocks the Canon MFP device.

However there is a way users the Send function can remain available without using the 3<sup>rd</sup> party terminal to unlock the. The Copy function remains locked. Follow the set up steps below.

Note: The device has to support the Send function and Dept ID/Limit Function.

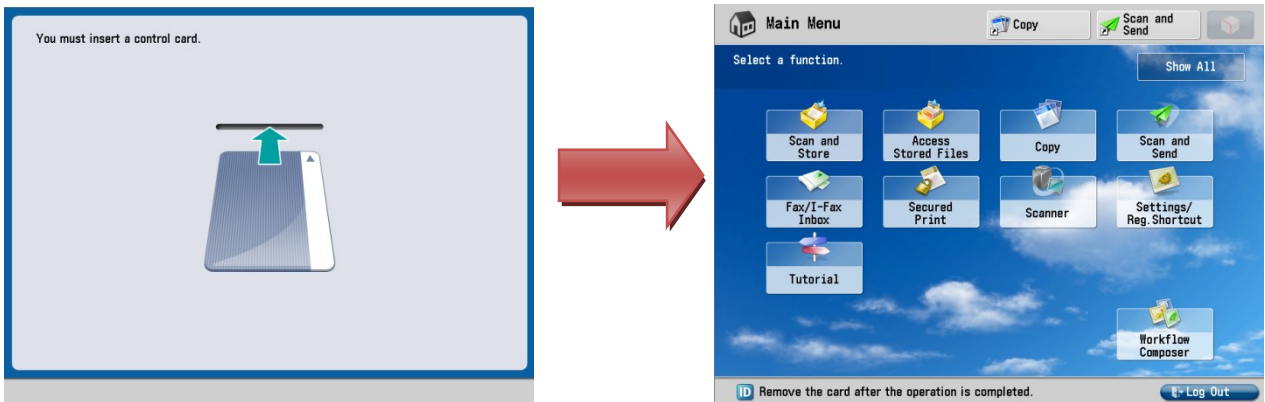
### 7.2.1 Set up steps

7.2.1.1 imageRUNNER ADVANCE

**NOTE:** This function has been implemented for all imageRUNNER ADVANCE systems. For imageRUNNER ADVANCE C5000, C7000, and C9000, the function was added via a release of system firmware. These steps will not work on versions prior to the change. Make sure the firmware version is updated to the latest one.

Step 1) Turn CC-IF ON by the service mode (set CC-SPSW other than “0”)

Step 2) Unlock the Canon MFP device screen using 3<sup>rd</sup> party control terminal

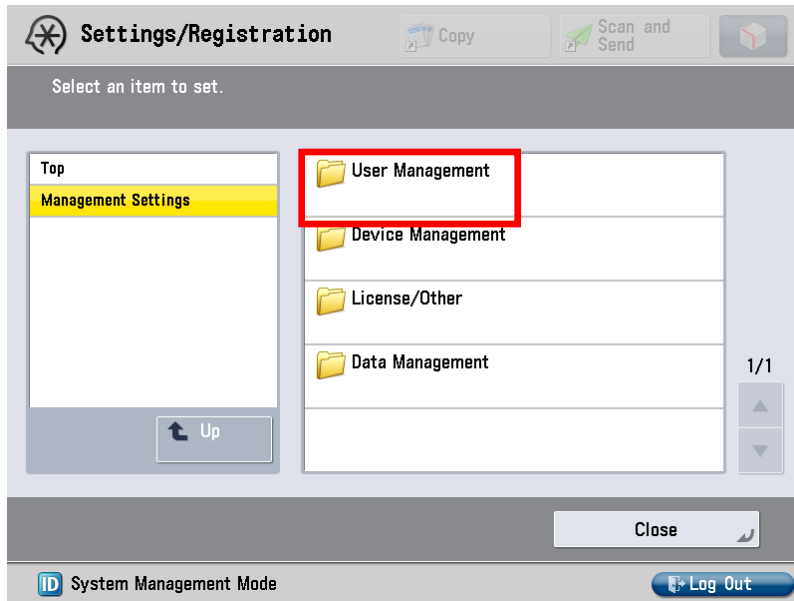
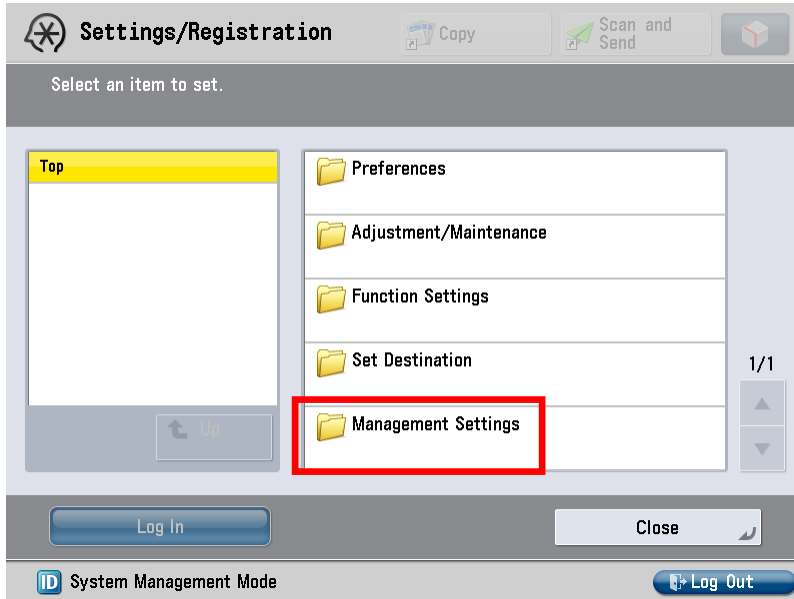


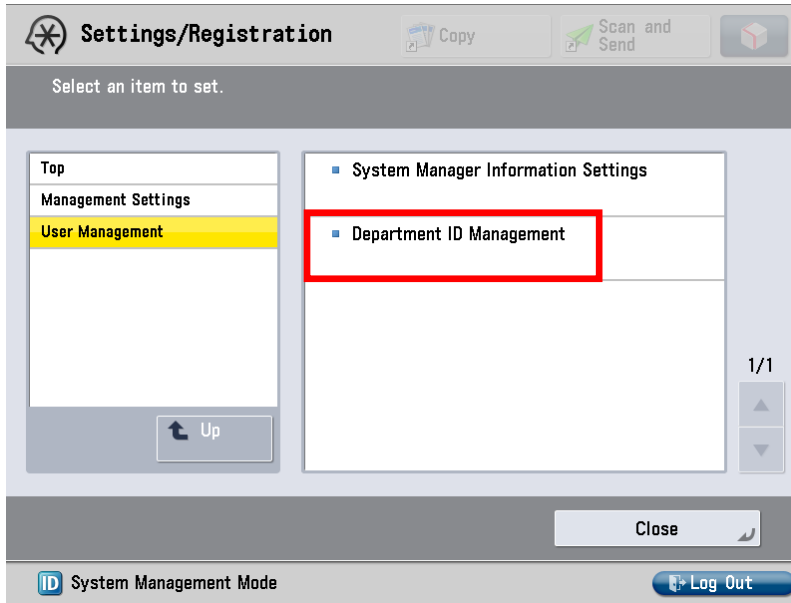
Standby Screen

Step3) Select “*Settings/Registration*” hard key (located to the right of the touch screen)

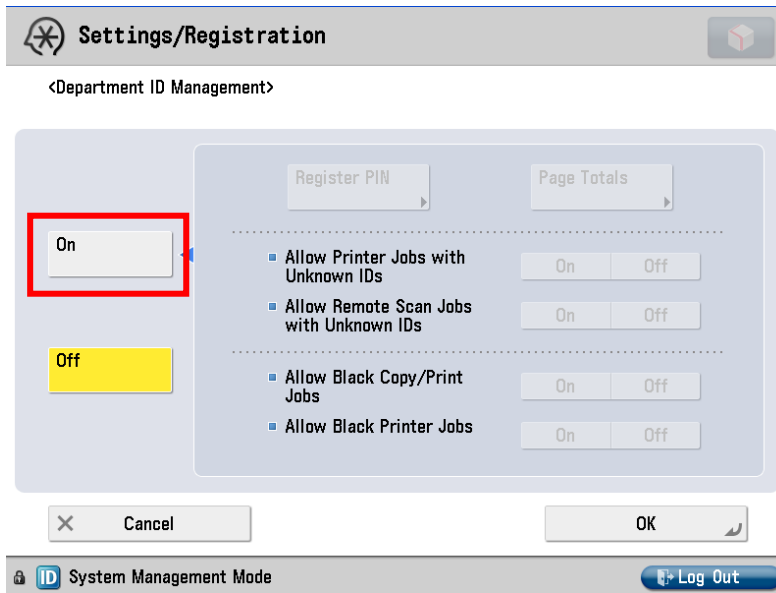
**NOTE:** The “Settings/Registration” hard key replaces the “Additional Functions” hard key on legacy imageRUNNER devices

Step4) On touch screen select “Management Settings” → “User Management” → “Department ID Management”.



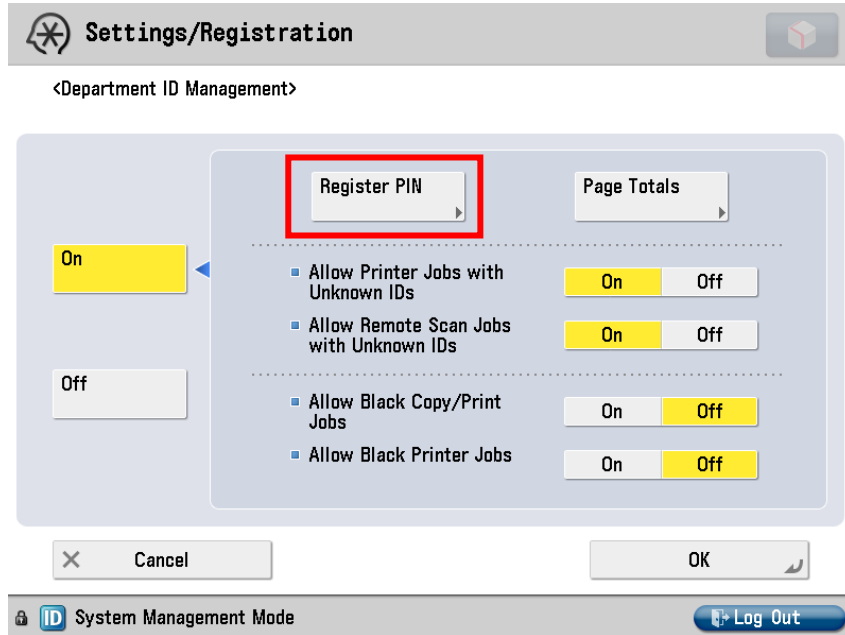


Step5) On Department ID Management screen select "On"

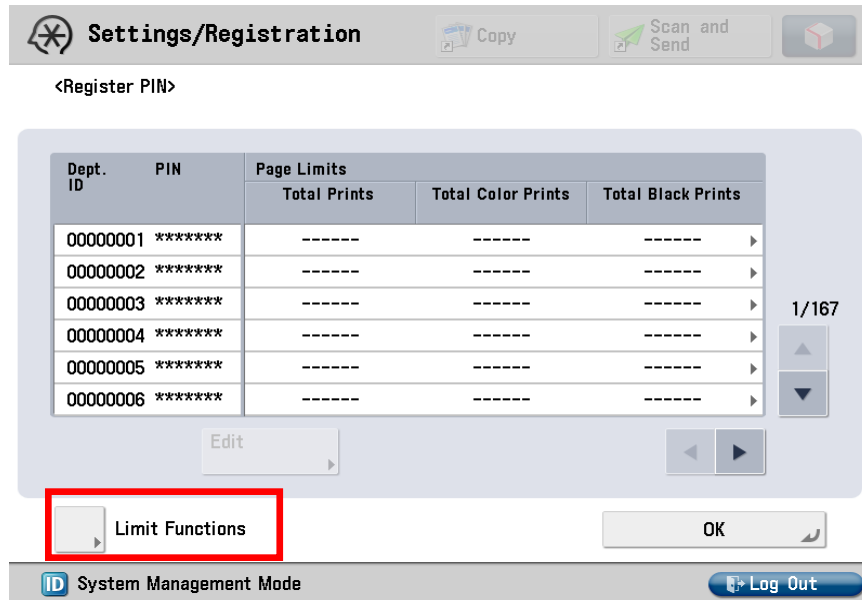




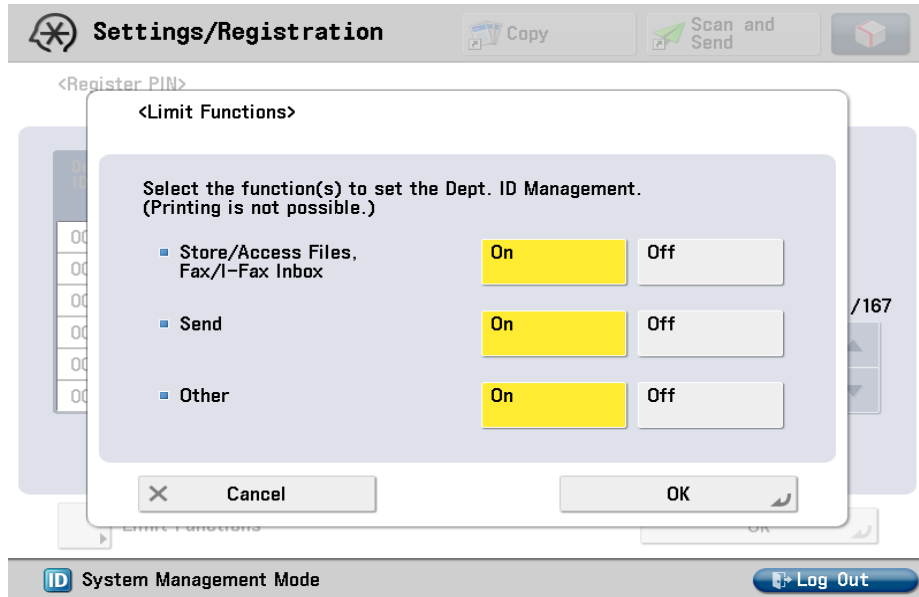
Step6) On Department ID Management screen select “Register PIN”



Step7) On Register PIN screen select “Limit Functions”

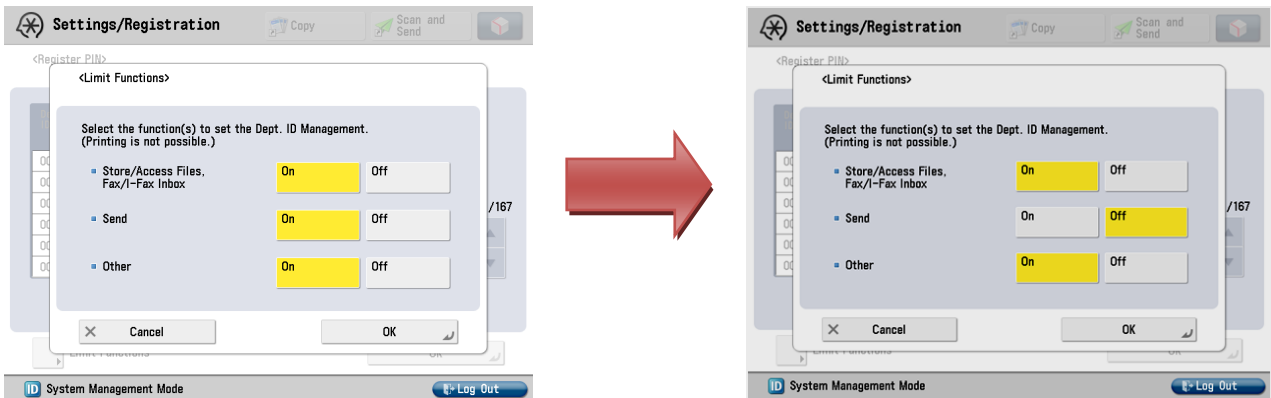


Step8) Limit Functions screen is displayed



Step9) Select “off” for the Send function

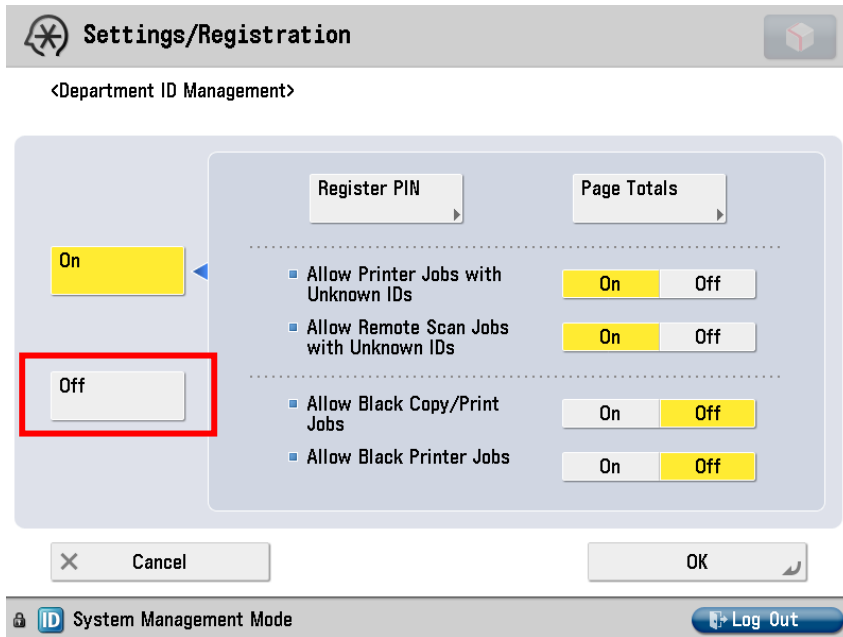
Don't select “off” for the functions other than Send.



Step10) Press “OK” to exit “Limit Functions”

Step11) Press “OK” to exit “Register PIN”

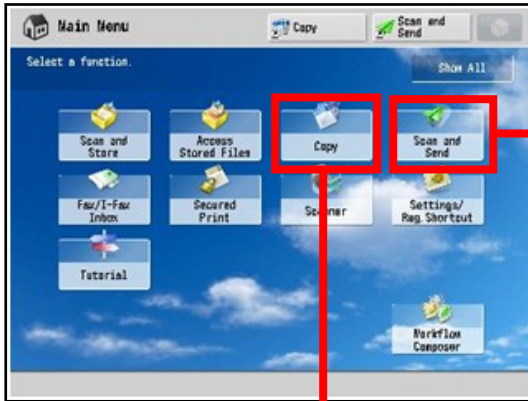
Step12) On Department ID Management touch screen select “Off”



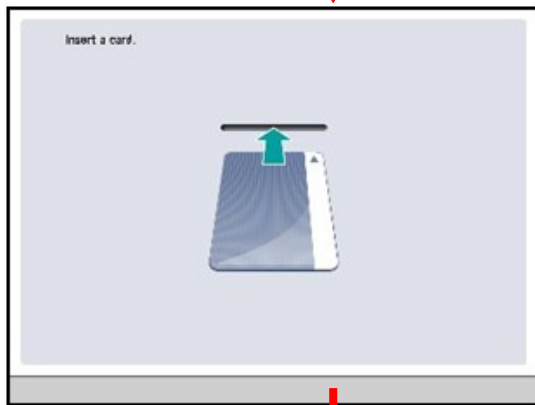
Step13) Press “OK” to exit “Department ID Management”

Step14) Press “Close” to exit “Settings/Registration”

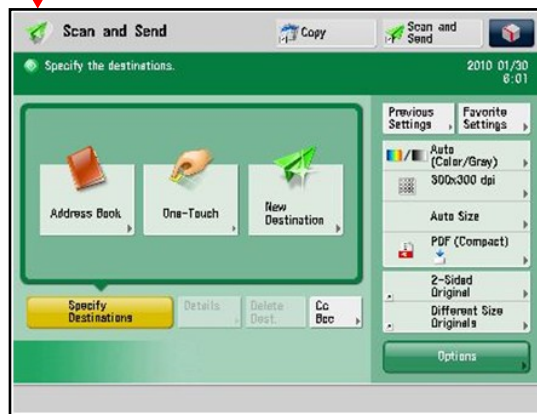
Step15) Reboot the Canon MFP device



User can select Send function from main menu without unlocking the Canon MFP device. When Copy function is selected the Canon MFP device displays standby screen (text is displayed instructing user to insert a control card) and doesn't allow user to access Copy function.



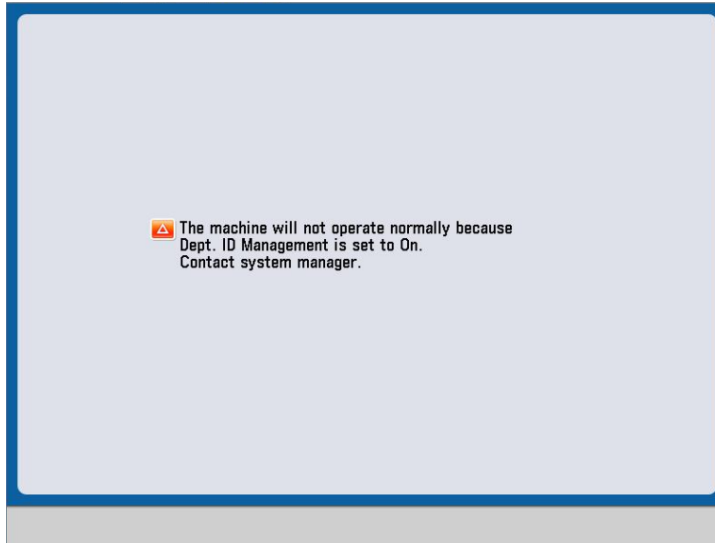
Copy function is available after unlocking the Canon MFP device.



SEND function is available without unlocking the Canon MFP device.

Caution

Make sure to turn CC-IF ON first then set Limit Function. Otherwise you'll see following error screen.



To clear this error screen, follow either one of the below steps.

- (1) Turn Department ID Management OFF using Remote UI.
- (2) Turn CC-IF OFF using service mode (set CC-SPSW to "0"). Turn Department ID Management OFF.

Then follow the instruction described in 8.1.1.2.



### 7.2.2 Caution

If you select “off” for the functions other than Send, especially the function which accompanies printing, and if you use that function without unlocking the Canon MFP device, the print job will be cancelled.

\*Note\* MEAP applications cannot be operated without unlocking the Canon MFP device.

Example:

- When “Store/Access Files Fax/I-Fax Inbox” is set to OFF
  - Print job from Mail Box will be cancelled.
  - If the service mode COPIER>OPTION>USER>CONTROL is set to 1, print job from Advanced Box will be cancelled.
  - If the service mode COPIER>OPTION>USER>PRJOB-CP is set to 1, Fax/I-Fax print job will be cancelled.
- When “Other” is set to OFF
  - If the service mode COPIER>OPTION>USER>CONTROL is set to 1, print job from Web Browser will be cancelled.

## Revision History

Date	Rev	Revised by	Revision Description
2010/06/23	0.7	Shin Fukuda	Draft document
2010/8/10	1.0	Brad Arrington	Legal Disclaimer Initial Release to CINC
2010/12/27	1.1	Yoichi Toyokura	Official Release from CINC
2011/12/16	1.2	Yoichi Toyokura	Added iR 1700 Series, iR 1133)
2012/02/01	1.3	Yoichi Toyokura	Added iR-ADV 4000 series)
2012/03/21	1.3.1	Brad Arrington	Update §7.2.1.1 for all iR-ADV models. Update §4.31 Update §4.32 with improved photos Update Copy Control Interface Cable-A1 Item Code